

Data Path : Z:\pestpcbsrv\HPCHEM1\ECD_P\Data\PP040423\
 Data File : PP056659.D
 Signal(s) : Signal #1: ECD1A.ch Signal #2: ECD2B.ch
 Acq On : 04 Apr 2023 20:30
 Operator : YP\AJ
 Sample : 02175-02
 Misc :
 ALS Vial : 24 Sample Multiplier: 1

Instrument :
 ECD_P
ClientSampleId :
 AUD-1956

Manual Integrations
APPROVED
 Reviewed By :Yogesh Patel 04/05/2023
 Supervised By :Ankita Jodhani 04/05/2023

Integration File signal 1: autoint1.e
 Integration File signal 2: autoint2.e
 Quant Time: Apr 04 22:05:50 2023
 Quant Method : Z:\pestpcbsrv\HPCHEM1\ECD_P\methods\PP040323.M
 Quant Title : GC EXTRACTABLES
 QLast Update : Tue Apr 04 03:37:03 2023
 Response via : Initial Calibration
 Integrator: ChemStation

Volume Inj. : 2 µl
 Signal #1 Phase : ZB-MR1 Signal #2 Phase: ZB-MR2
 Signal #1 Info : 30Mx0.32mmx 0.50µ Signal #2 Info : 30M x 0.32mm x 0.25µm

Compound	RT#1	RT#2	Resp#1	Resp#2	ng/ml	ng/ml

System Monitoring Compounds						
1) SA Tetrachlo...	4.436	3.668	28631869	17512630	14.468m	10.868m
2) SA Decachlor...	10.272	8.755	13112225	14333604	13.660	11.763
Target Compounds						
31) L7 AR-1260-1	7.227	6.271	71369161	65139178	1030.183m	810.632
32) L7 AR-1260-2	7.485	6.460	79974207	70827701	1084.711	821.255
33) L7 AR-1260-3	7.846	6.617	54253482	57064692	928.923	673.060 #
34) L7 AR-1260-4	8.078	7.092	91652088	45860084	1486.103	668.164 #
35) L7 AR-1260-5	8.401	7.333	133.5E6	124.3E6	1226.858	944.180m

(f)=RT Delta > 1/2 Window (#)=Amounts differ by > 25% (m)=manual int.

Data Path : Z:\pestpcbsrv\HPCHEM1\ECD_P\Data\PP040423\
 Data File : PP056659.D
 Signal(s) : Signal #1: ECD1A.ch Signal #2: ECD2B.ch
 Acq On : 04 Apr 2023 20:30
 Operator : YP\AJ
 Sample : 02175-02
 Misc :
 ALS Vial : 24 Sample Multiplier: 1

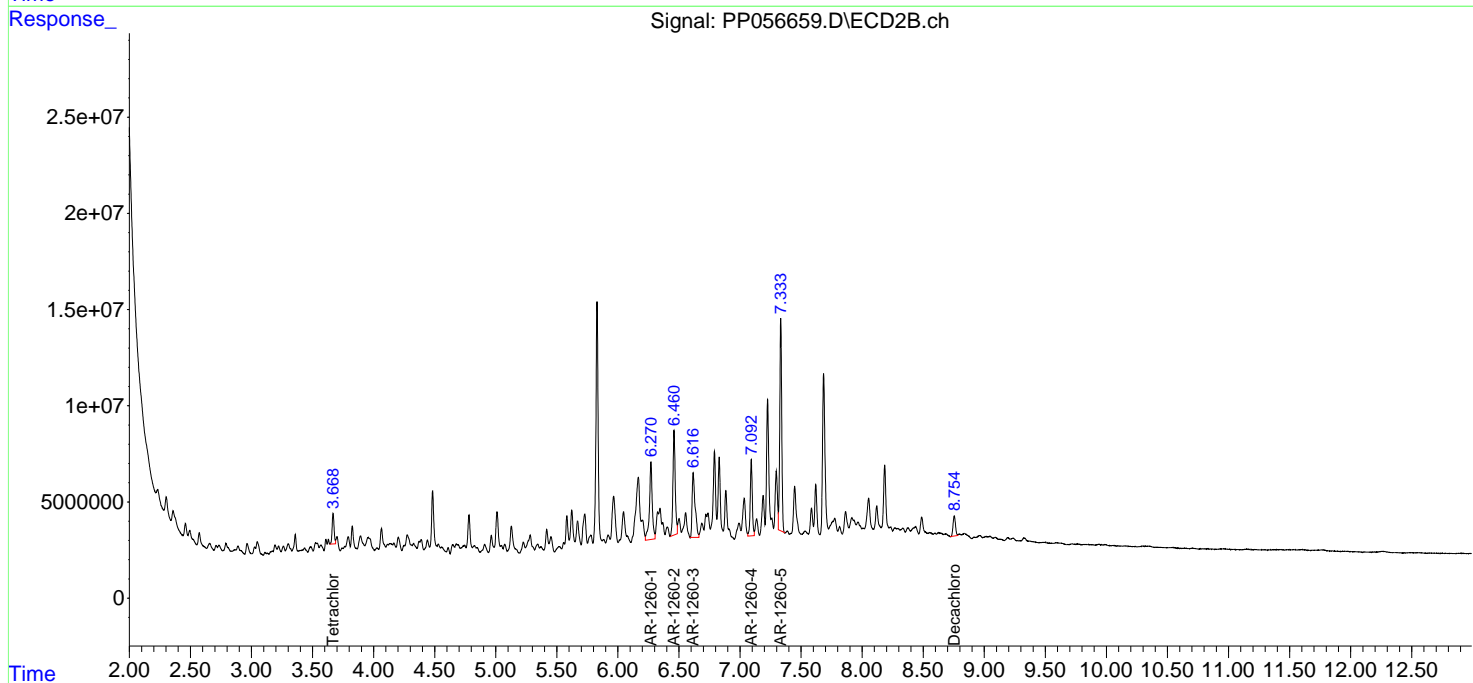
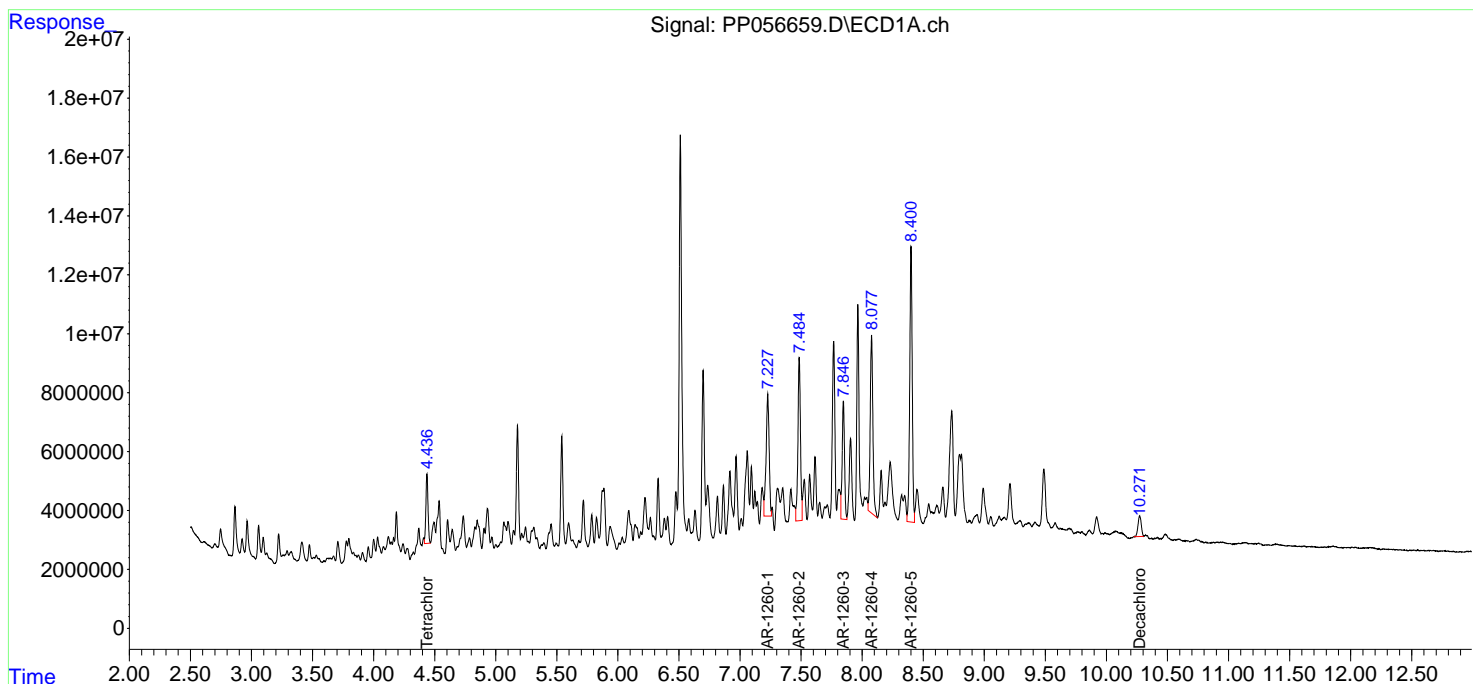
Instrument :
 ECD_P
ClientSampleId :
 AUD-1956

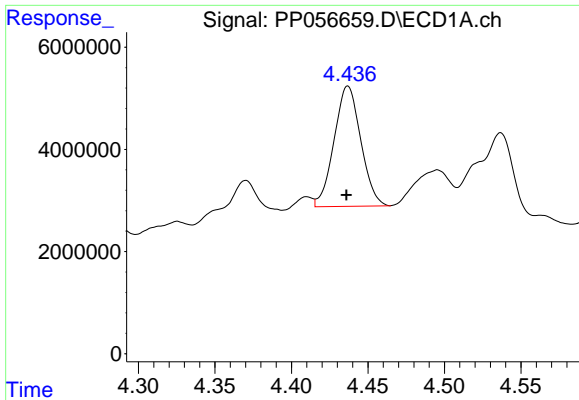
Manual Integrations
APPROVED

Reviewed By :Yogesh Patel 04/05/2023
 Supervised By :Ankita Jodhani 04/05/2023

Integration File signal 1: autoint1.e
 Integration File signal 2: autoint2.e
 Quant Time: Apr 04 22:05:50 2023
 Quant Method : Z:\pestpcbsrv\HPCHEM1\ECD_P\methods\PP040323.M
 Quant Title : GC EXTRACTABLES
 QLast Update : Tue Apr 04 03:37:03 2023
 Response via : Initial Calibration
 Integrator: ChemStation

Volume Inj. : 2 µl
 Signal #1 Phase : ZB-MR1 Signal #2 Phase: ZB-MR2
 Signal #1 Info : 30Mx0.32mmx 0.50µ Signal #2 Info : 30M x 0.32mm x 0.25µm





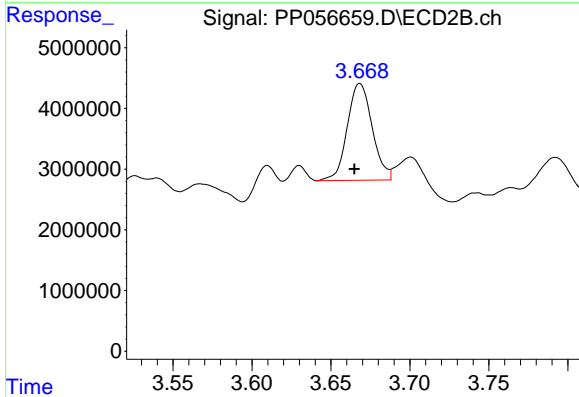
#1 Tetrachloro-m-xylene

R.T.: 4.436 min
 Delta R.T.: 0.000 min
 Response: 28631869
 Conc: 14.47 ng/ml

Instrument :
 ECD_P
 ClientSampleId :
 AUD-1956

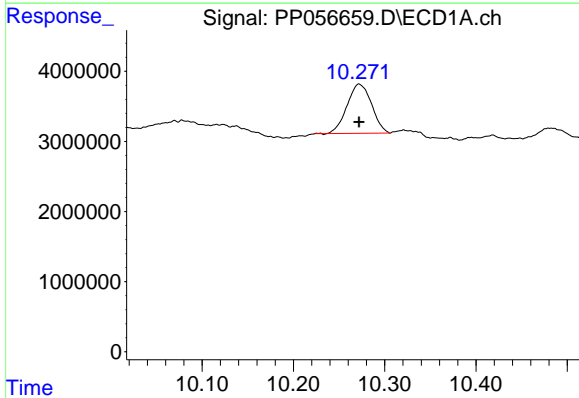
Manual Integrations
 APPROVED

Reviewed By :Yogesh Patel 04/05/2023
 Supervised By :Ankita Jodhani 04/05/2023



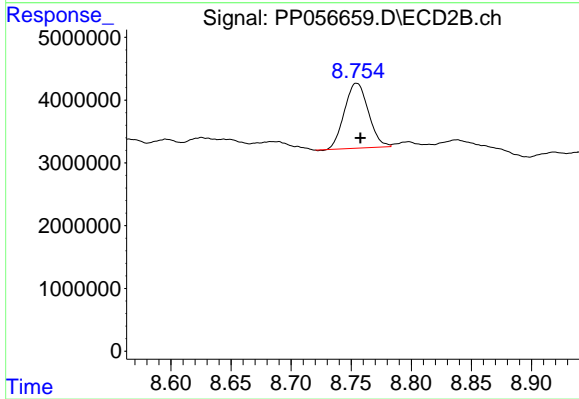
#1 Tetrachloro-m-xylene

R.T.: 3.668 min
 Delta R.T.: 0.003 min
 Response: 17512630
 Conc: 10.87 ng/ml m



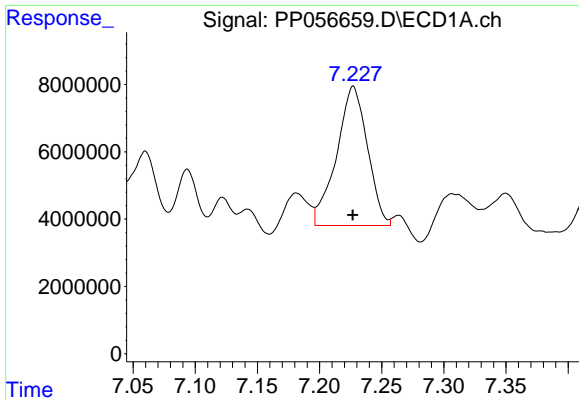
#2 Decachlorobiphenyl

R.T.: 10.272 min
 Delta R.T.: 0.000 min
 Response: 13112225
 Conc: 13.66 ng/ml



#2 Decachlorobiphenyl

R.T.: 8.755 min
 Delta R.T.: -0.003 min
 Response: 14333604
 Conc: 11.76 ng/ml



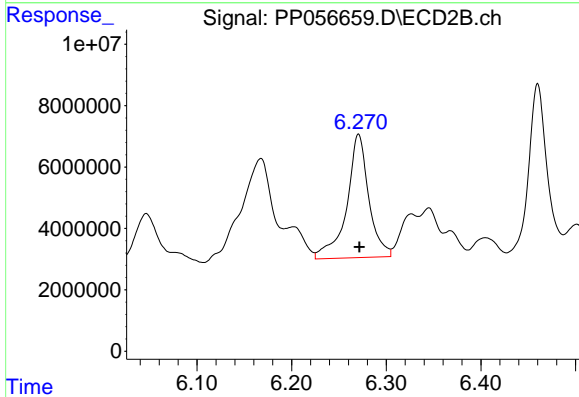
#31 AR-1260-1

R.T.: 7.227 min
 Delta R.T.: 0.000 min
 Response: 71369161
 Conc: 1030.18 ng/ml

Instrument :
 ECD_P
 ClientSampleId :
 AUD-1956

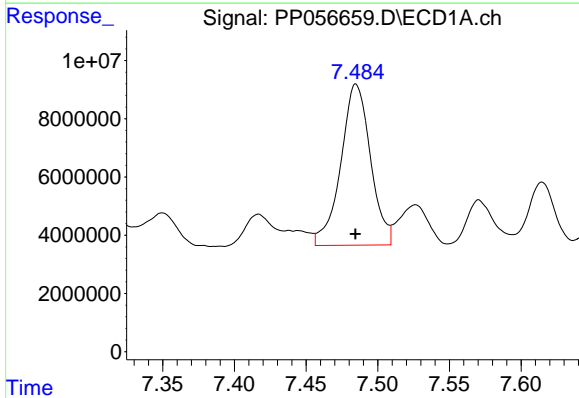
Manual Integrations
 APPROVED

Reviewed By :Yogesh Patel 04/05/2023
 Supervised By :Ankita Jodhani 04/05/2023



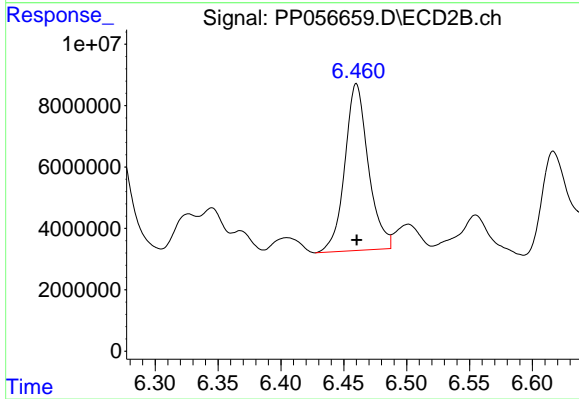
#31 AR-1260-1

R.T.: 6.271 min
 Delta R.T.: 0.000 min
 Response: 65139178
 Conc: 810.63 ng/ml



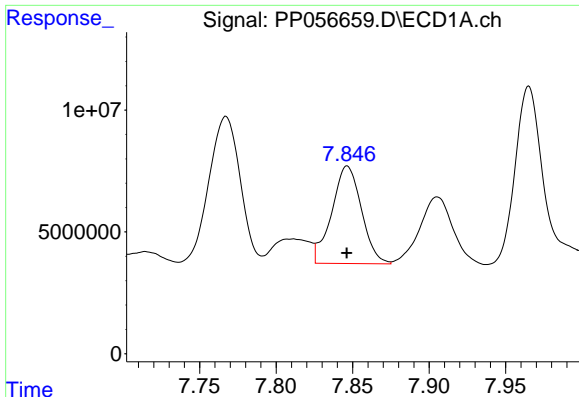
#32 AR-1260-2

R.T.: 7.485 min
 Delta R.T.: 0.000 min
 Response: 79974207
 Conc: 1084.71 ng/ml



#32 AR-1260-2

R.T.: 6.460 min
 Delta R.T.: 0.000 min
 Response: 70827701
 Conc: 821.25 ng/ml



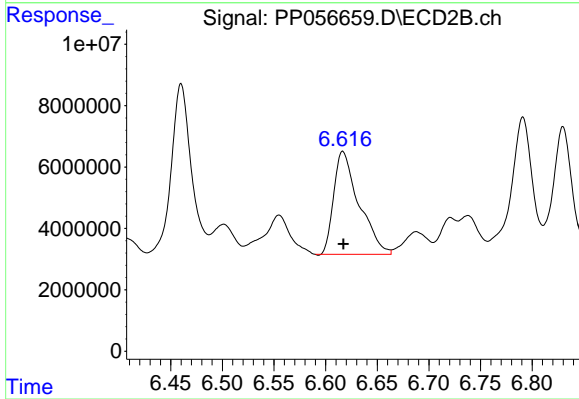
#33 AR-1260-3

R.T.: 7.846 min
 Delta R.T.: 0.000 min
 Response: 54253482
 Conc: 928.92 ng/ml

Instrument :
 ECD_P
 ClientSampleId :
 AUD-1956

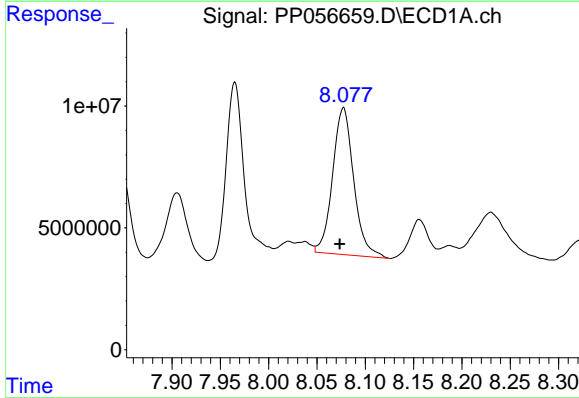
Manual Integrations
 APPROVED

Reviewed By :Yogesh Patel 04/05/2023
 Supervised By :Ankita Jodhani 04/05/2023



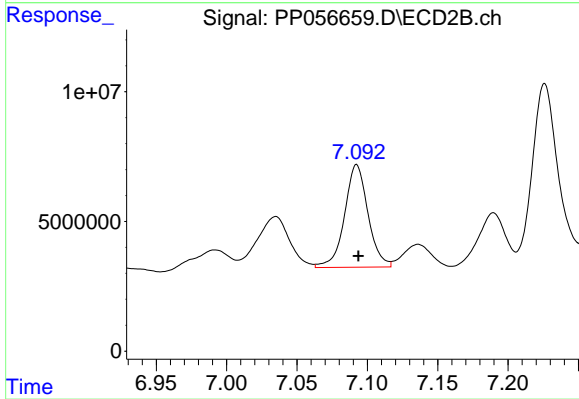
#33 AR-1260-3

R.T.: 6.617 min
 Delta R.T.: 0.000 min
 Response: 57064692
 Conc: 673.06 ng/ml



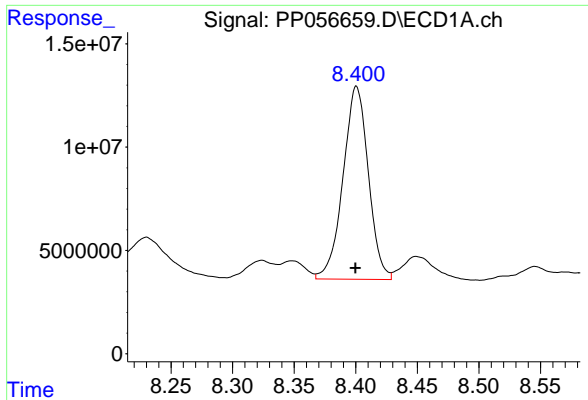
#34 AR-1260-4

R.T.: 8.078 min
 Delta R.T.: 0.004 min
 Response: 91652088
 Conc: 1486.10 ng/ml



#34 AR-1260-4

R.T.: 7.092 min
 Delta R.T.: -0.001 min
 Response: 45860084
 Conc: 668.16 ng/ml



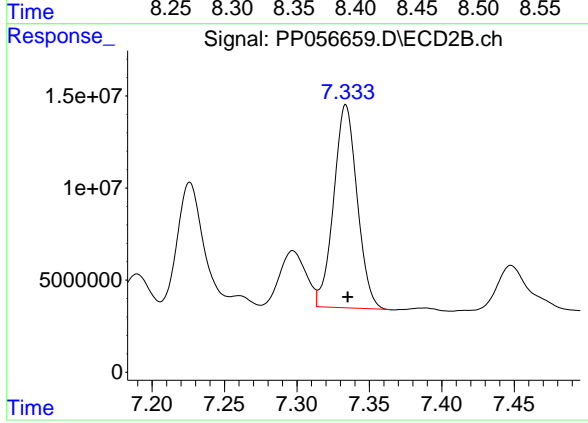
#35 AR-1260-5

R.T.: 8.401 min
 Delta R.T.: 0.000 min
 Response: 133513122
 Conc: 1226.86 ng/m

Instrument :
 ECD_P
 ClientSampleId :
 AUD-1956

Manual Integrations
 APPROVED

Reviewed By :Yogesh Patel 04/05/2023
 Supervised By :Ankita Jodhani 04/05/2023



#35 AR-1260-5

R.T.: 7.333 min
 Delta R.T.: -0.002 min
 Response: 124332978
 Conc: 944.18 ng/ml m