

Data Path : Z:\pestpcbsrv\HPCHEM1\ECD_P\Data\PP040524\
 Data File : PP064105.D
 Signal(s) : Signal #1: ECD1A.ch Signal #2: ECD2B.ch
 Acq On : 05 Apr 2024 13:13
 Operator : YP\AJ
 Sample : PB160023BL
 Misc :
 ALS Vial : 11 Sample Multiplier: 1

Instrument :
 ECD_P
ClientSampleId :
 PB160023BL

Integration File signal 1: autoint1.e
 Integration File signal 2: autoint2.e
 Quant Time: Apr 05 15:31:18 2024
 Quant Method : Z:\pestpcbsrv\HPCHEM1\ECD_P\methods\PP031924.M
 Quant Title : GC EXTRACTABLES
 QLast Update : Tue Mar 19 06:23:02 2024
 Response via : Initial Calibration
 Integrator: ChemStation

Volume Inj. : 2 µl
 Signal #1 Phase : ZB-MR1 Signal #2 Phase: ZB-MR2
 Signal #1 Info : 30Mx0.32mmx 0.50µ Signal #2 Info : 30M x 0.32mm x 0.25µm

Compound	RT#1	RT#2	Resp#1	Resp#2	ng/ml	ng/ml

System Monitoring Compounds						
1) SA Tetrachlo...	4.487	3.637	39088149	41129652	16.381	17.227
2) SA Decachlor...	10.361	8.671	43928852	43179146	17.302	15.977

Target Compounds

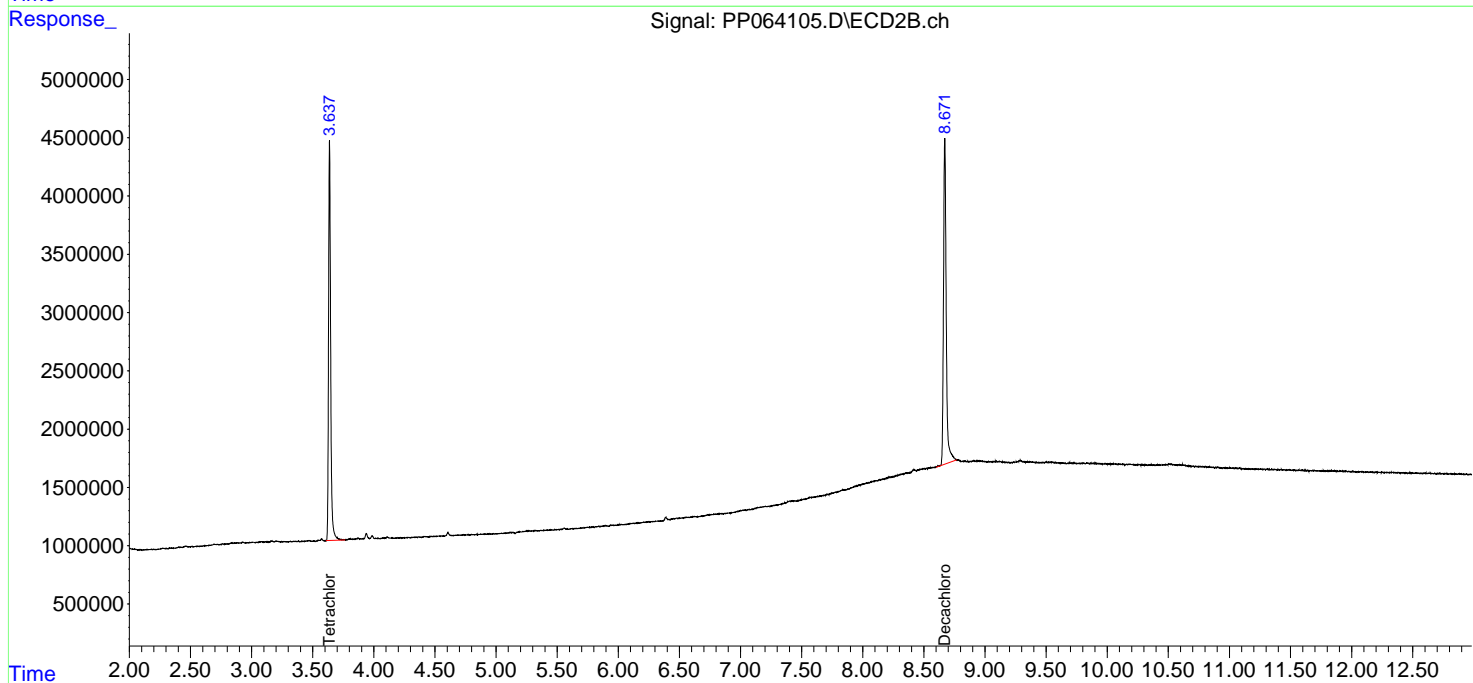
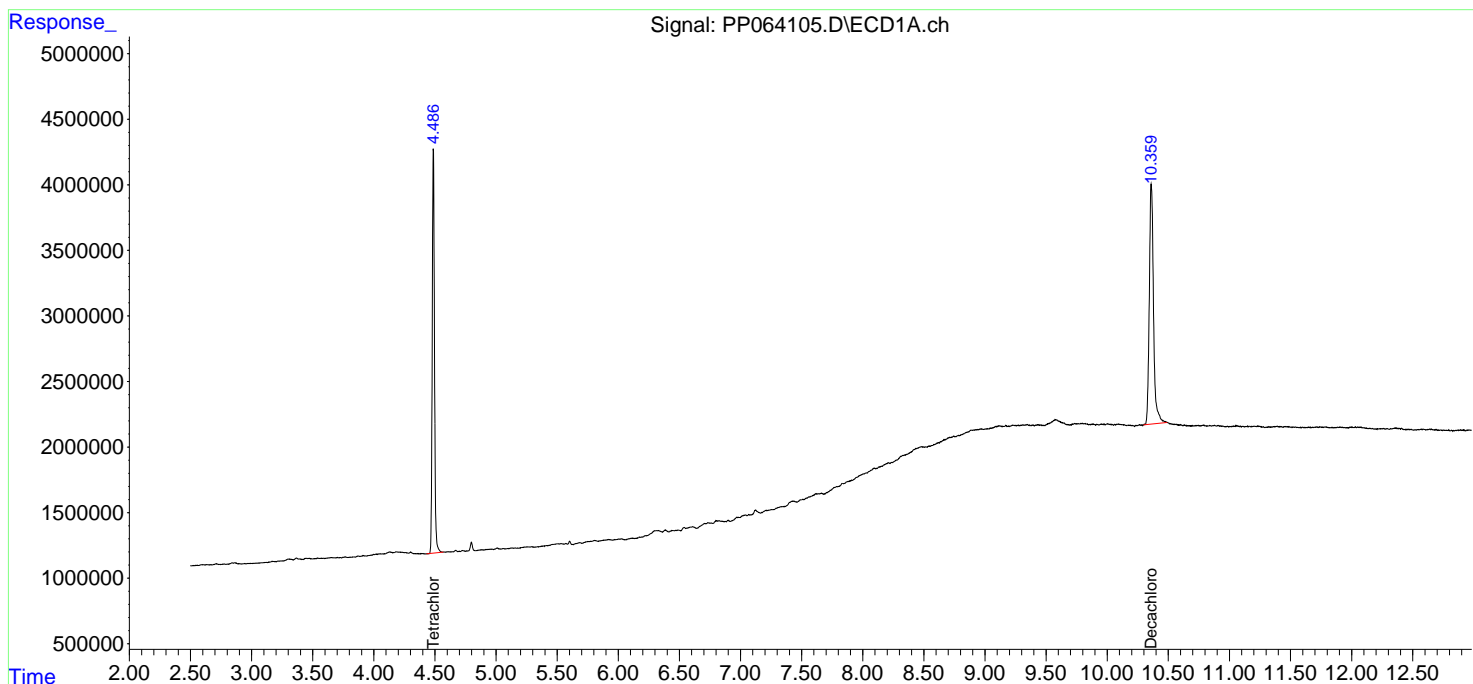
 (f)=RT Delta > 1/2 Window (#)=Amounts differ by > 25% (m)=manual int.

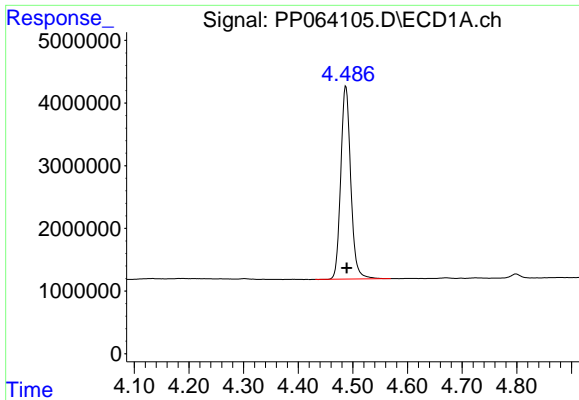
Data Path : Z:\pestpcbsrv\HPCHEM1\ECD_P\Data\PP040524\
 Data File : PP064105.D
 Signal(s) : Signal #1: ECD1A.ch Signal #2: ECD2B.ch
 Acq On : 05 Apr 2024 13:13
 Operator : YP\AJ
 Sample : PB160023BL
 Misc :
 ALS Vial : 11 Sample Multiplier: 1

Instrument :
 ECD_P
 ClientSampleId :
 PB160023BL

Integration File signal 1: autoint1.e
 Integration File signal 2: autoint2.e
 Quant Time: Apr 05 15:31:18 2024
 Quant Method : Z:\pestpcbsrv\HPCHEM1\ECD_P\methods\PP031924.M
 Quant Title : GC EXTRACTABLES
 QLast Update : Tue Mar 19 06:23:02 2024
 Response via : Initial Calibration
 Integrator: ChemStation

Volume Inj. : 2 µl
 Signal #1 Phase : ZB-MR1 Signal #2 Phase: ZB-MR2
 Signal #1 Info : 30Mx0.32mmx 0.50µ Signal #2 Info : 30M x 0.32mm x 0.25µm

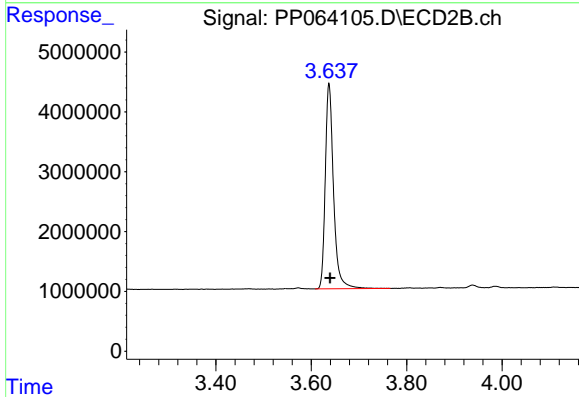




#1 Tetrachloro-m-xylene

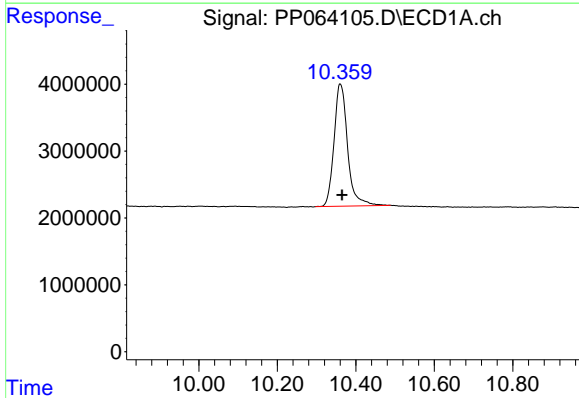
R.T.: 4.487 min
Delta R.T.: -0.002 min
Response: 39088149
Conc: 16.38 ng/ml

Instrument :
ECD_P
ClientSampleId :
PB160023BL



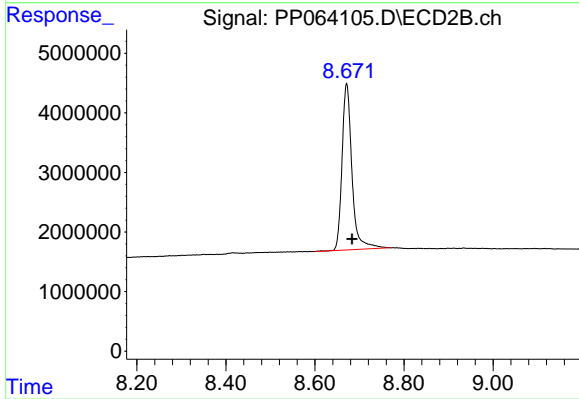
#1 Tetrachloro-m-xylene

R.T.: 3.637 min
Delta R.T.: -0.002 min
Response: 41129652
Conc: 17.23 ng/ml



#2 Decachlorobiphenyl

R.T.: 10.361 min
Delta R.T.: -0.005 min
Response: 43928852
Conc: 17.30 ng/ml



#2 Decachlorobiphenyl

R.T.: 8.671 min
Delta R.T.: -0.012 min
Response: 43179146
Conc: 15.98 ng/ml