

Data Path : Z:\pestpcbsrv\HPCHEM1\ECD_P\Data\PP040622\
 Data File : PP045649.D
 Signal(s) : Signal #1: ECD1A.ch Signal #2: ECD2B.ch
 Acq On : 08 Apr 2022 01:26
 Operator : YP\AJ
 Sample : N2287-02 10X
 Misc :
 ALS Vial : 18 Sample Multiplier: 1

Instrument :
 ECD_P
 ClientSampleId :

Integration File signal 1: autoint1.e
 Integration File signal 2: autoint2.e
 Quant Time: Apr 08 03:38:50 2022
 Quant Method : Z:\pestpcbsrv\HPCHEM1\ECD_P\methods\PP033022.M
 Quant Title : GC EXTRACTABLES
 QLast Update : Thu Mar 31 07:54:52 2022
 Response via : Initial Calibration
 Integrator: ChemStation

Volume Inj. : 2 µl
 Signal #1 Phase : ZB-MR1 Signal #2 Phase: ZB-MR2
 Signal #1 Info : 30Mx0.32mmx 0.50µ Signal #2 Info : 30M x 0.32mm x 0.25µm

Compound	RT#1	RT#2	Resp#1	Resp#2	ng/ml	ng/ml
System Monitoring Compounds						
1) SA Tetrachlo...	3.884	3.144	5191945	2974198	2.152	1.880
2) SA Decachlor...	9.994	8.487	2957586	2756521	2.064	1.818
Target Compounds						
3) L1 AR-1016-1	5.148	4.266f	5714307	1030310	79.491	17.313 #
4) L1 AR-1016-2	5.148	4.310	5714307	1429001	53.205	16.996 #
5) L1 AR-1016-3	0.000	4.504	0	321337	N.D.	7.087 #
6) L1 AR-1016-4	5.350f	4.530	5351635	1385959	97.710	37.506 #
7) L1 AR-1016-5	5.654	4.766	3671051	6073197	70.854	126.827 #
8) L2 AR-1221-1	4.109	3.357f	94750	1086424	3.773	52.243 #
9) L2 AR-1221-2	4.202	3.460	421320	308257	21.972	19.470
10) L2 AR-1221-3	4.289	3.543	1707599	1534630	28.409	32.807
11) L3 AR-1232-1	4.289	3.543	1707599	1534630	34.631	41.818
12) L3 AR-1232-2	4.858	4.310	5066367	1429001	229.949	41.871 #
13) L3 AR-1232-3	5.148	4.504	5714307	321337	132.735	17.568 #
14) L3 AR-1232-4	5.350f	4.582	5351635	1963259	244.861	119.858 #
15) L3 AR-1232-5	5.435	4.766	6851307	6073197	430.168	325.001
16) L4 AR-1242-1	5.148	4.266f	5714307	1030310	98.189	21.170 #
17) L4 AR-1242-2	5.148	4.310	5714307	1429001	65.850	21.326 #
18) L4 AR-1242-3	0.000	4.504	0	321337	N.D.	8.724 #
19) L4 AR-1242-4	5.350f	4.582	5351635	1963259	118.657	54.377 #
20) L4 AR-1242-5	6.149f	5.163f	7299317	9042836	157.431	190.201
21) L5 AR-1248-1	5.148	4.266f	5714307	1030310	124.850	27.030 #
22) L5 AR-1248-2	5.435	4.530	6851307	1385959	111.364	26.907 #
23) L5 AR-1248-3	5.654	4.582	3671051	1963259	51.333	36.465 #
24) L5 AR-1248-4	6.096	4.766	13456868	6073197	178.997	94.386 #
25) L5 AR-1248-5	6.149f	5.163f	7299317	9042836	97.262	139.010 #
26) L6 AR-1254-1	6.042f	5.163f	3961380	9042836	55.639	92.927 #
27) L6 AR-1254-2	6.330f	5.272f	8263658	3253278	76.498	39.892 #
28) L6 AR-1254-3	6.711	5.755f	10114828	1884614	91.223	15.243 #
29) L6 AR-1254-4	7.023	5.984	2206939	2283580	27.458	28.480
30) L6 AR-1254-5	7.473	6.454f	1023659	521116	12.802	4.770 #
31) L7 AR-1260-1	6.870	5.861	2734923	1087975	34.293	13.125 #
32) L7 AR-1260-2	7.163	6.091	717441	389548	7.962	3.998 #
33) L7 AR-1260-3	7.576f	6.239	1090168	124195	15.736	1.343 #
34) L7 AR-1260-4	7.789f	6.735f	431800	404783	5.597	5.283
35) L7 AR-1260-5	8.153	7.035f	1117515	719234	7.915	4.066 #
36) L8 AR-1262-1	7.576f	6.482	1090168	177428	10.809	1.580 #
37) L8 AR-1262-2	8.153	6.735f	1117515	404783	6.644	4.007 #
38) L8 AR-1262-3	8.469	7.334	110053	231416	0.952	2.860 #
39) L8 AR-1262-4	8.571	7.379	1321280	309479	21.610	2.092 #
40) L8 AR-1262-5	9.255	7.939	799878	1786724	13.087	24.547 #
41) L9 AR-1268-1	8.469	7.334	110053	231416	0.545	1.034 #

Data Path : Z:\pestpcbsrv\HPCHEM1\ECD_P\Data\PP040622\
 Data File : PP045649.D
 Signal(s) : Signal #1: ECD1A.ch Signal #2: ECD2B.ch
 Acq On : 08 Apr 2022 01:26
 Operator : YP\AJ
 Sample : N2287-02 10X
 Misc :
 ALS Vial : 18 Sample Multiplier: 1

Instrument :
 ECD_P
 ClientSampleId :

Integration File signal 1: autoint1.e
 Integration File signal 2: autoint2.e
 Quant Time: Apr 08 03:38:50 2022
 Quant Method : Z:\pestpcbsrv\HPCHEM1\ECD_P\methods\PP033022.M
 Quant Title : GC EXTRACTABLES
 QLast Update : Thu Mar 31 07:54:52 2022
 Response via : Initial Calibration
 Integrator: ChemStation

Volume Inj. : 2 µl
 Signal #1 Phase : ZB-MR1 Signal #2 Phase: ZB-MR2
 Signal #1 Info : 30Mx0.32mmx 0.50µ Signal #2 Info : 30M x 0.32mm x 0.25µm

	Compound	RT#1	RT#2	Resp#1	Resp#2	ng/ml	ng/ml
42)	L9 AR-1268-2	8.571	7.379f	1321280	309479	7.070	1.528 #
43)	L9 AR-1268-3	8.811	7.611	46725	395767	0.283	2.313 #
44)	L9 AR-1268-4	9.255	7.939	799878	1786724	11.948	22.570 #
45)	L9 AR-1268-5	9.679	8.231	247823	103230	0.477	0.193 #

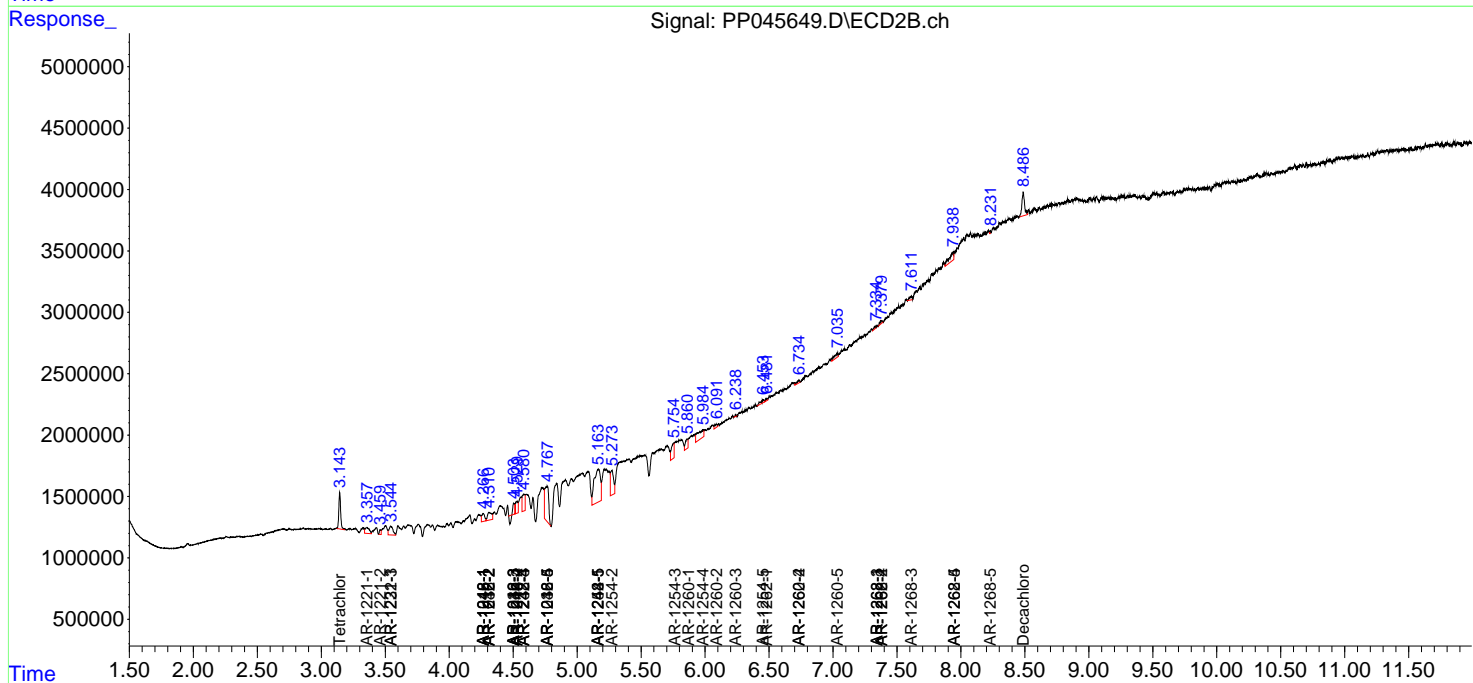
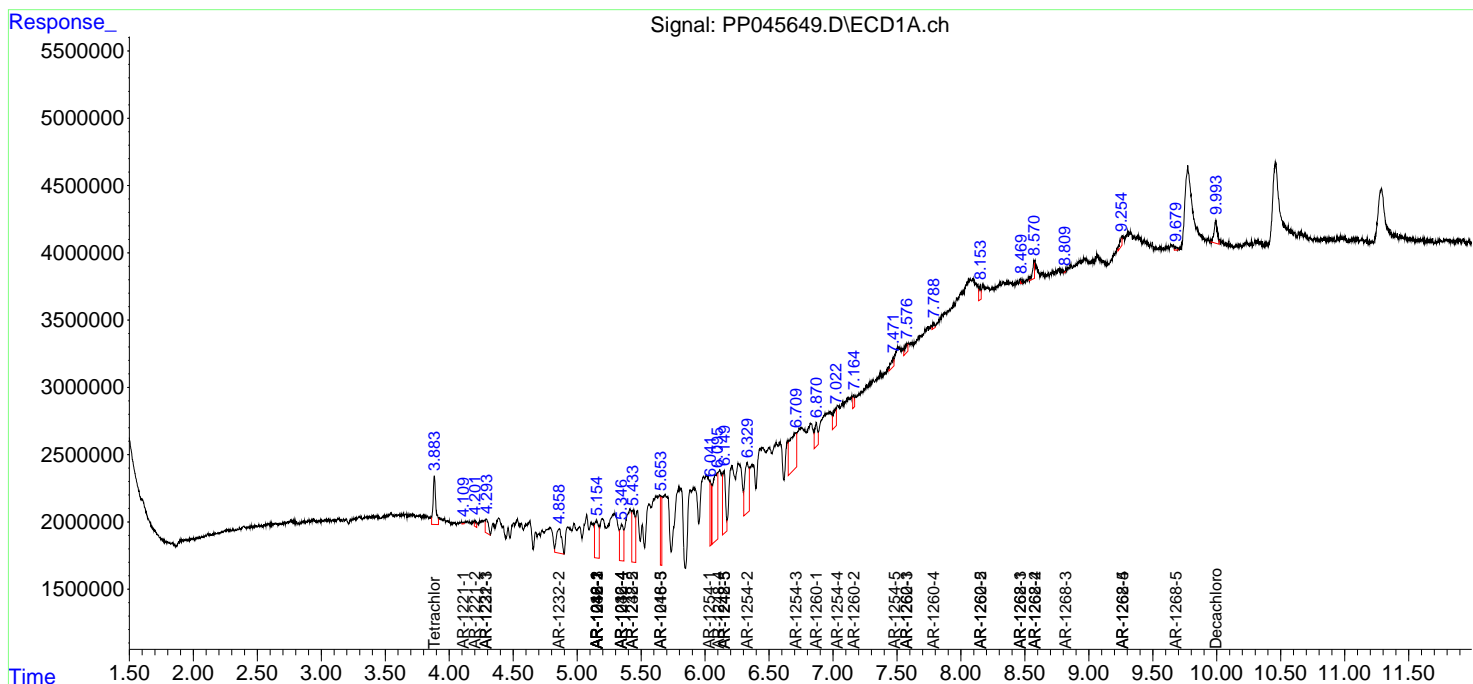
(f)=RT Delta > 1/2 Window (#)=Amounts differ by > 25% (m)=manual int.

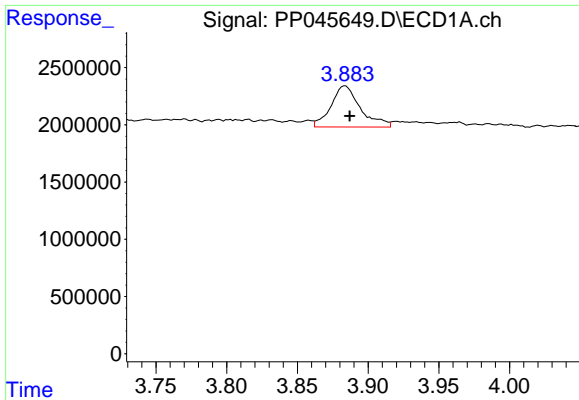
Data Path : Z:\pestpcbsrv\HPCHEM1\ECD_P\Data\PP040622\
 Data File : PP045649.D
 Signal(s) : Signal #1: ECD1A.ch Signal #2: ECD2B.ch
 Acq On : 08 Apr 2022 01:26
 Operator : YP\AJ
 Sample : N2287-02 10X
 Misc :
 ALS Vial : 18 Sample Multiplier: 1

Instrument :
 ECD_P
 ClientSampleId :

Integration File signal 1: autoint1.e
 Integration File signal 2: autoint2.e
 Quant Time: Apr 08 03:38:50 2022
 Quant Method : Z:\pestpcbsrv\HPCHEM1\ECD_P\methods\PP033022.M
 Quant Title : GC EXTRACTABLES
 QLast Update : Thu Mar 31 07:54:52 2022
 Response via : Initial Calibration
 Integrator: ChemStation

Volume Inj. : 2 µl
 Signal #1 Phase : ZB-MR1 Signal #2 Phase: ZB-MR2
 Signal #1 Info : 30Mx0.32mmx 0.50µ Signal #2 Info : 30M x 0.32mm x 0.25µm

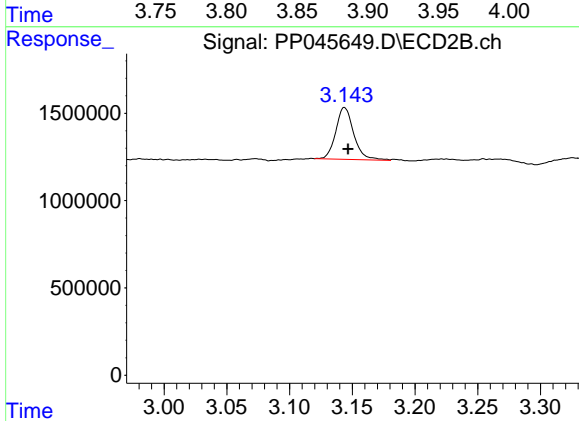




#1 Tetrachloro-m-xylene

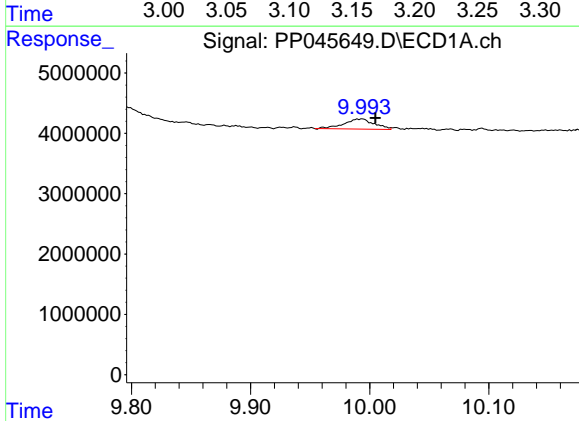
R.T.: 3.884 min
 Delta R.T.: -0.003 min
 Response: 5191945
 Conc: 2.15 ng/ml

Instrument :
 ECD_P
 ClientSampleId :



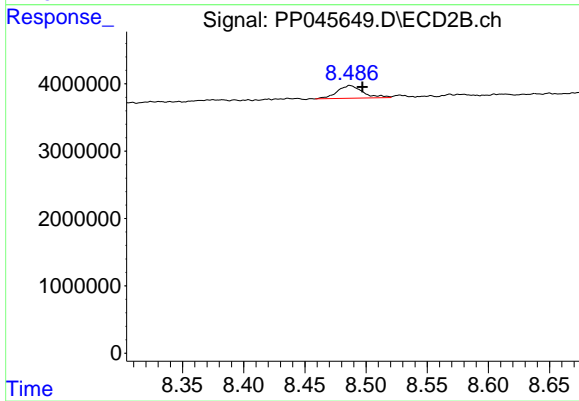
#1 Tetrachloro-m-xylene

R.T.: 3.144 min
 Delta R.T.: -0.003 min
 Response: 2974198
 Conc: 1.88 ng/ml



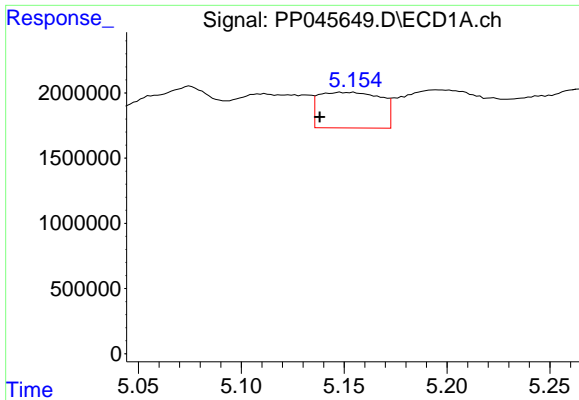
#2 Decachlorobiphenyl

R.T.: 9.994 min
 Delta R.T.: -0.011 min
 Response: 2957586
 Conc: 2.06 ng/ml



#2 Decachlorobiphenyl

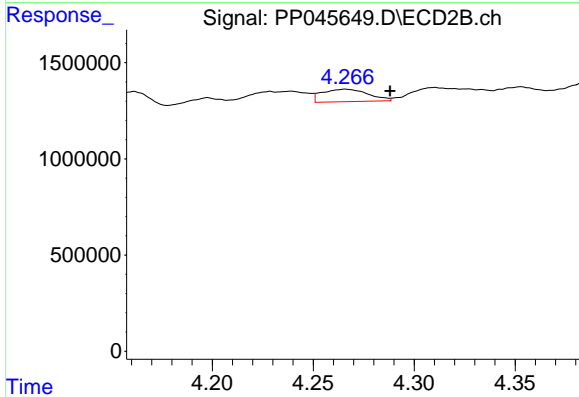
R.T.: 8.487 min
 Delta R.T.: -0.010 min
 Response: 2756521
 Conc: 1.82 ng/ml



#3 AR-1016-1

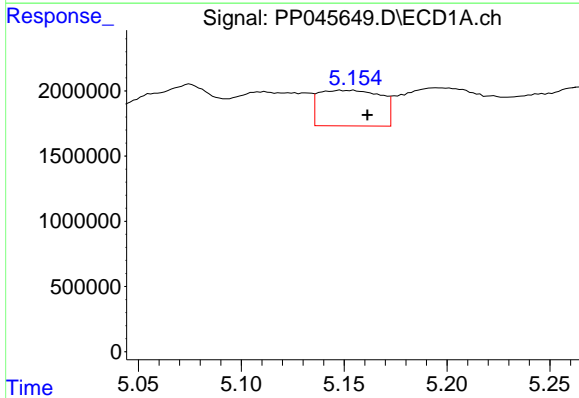
R.T.: 5.148 min
 Delta R.T.: 0.010 min
 Response: 5714307
 Conc: 79.49 ng/ml

Instrument :
 ECD_P
 ClientSampleId :



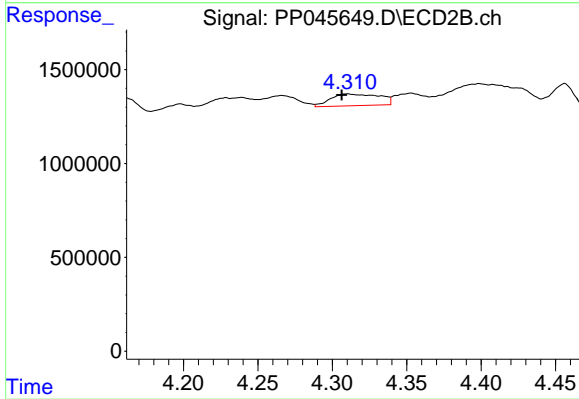
#3 AR-1016-1

R.T.: 4.266 min
 Delta R.T.: -0.022 min
 Response: 1030310
 Conc: 17.31 ng/ml



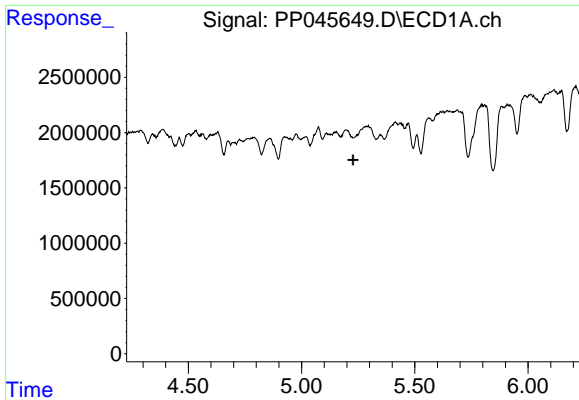
#4 AR-1016-2

R.T.: 5.148 min
 Delta R.T.: -0.013 min
 Response: 5714307
 Conc: 53.21 ng/ml



#4 AR-1016-2

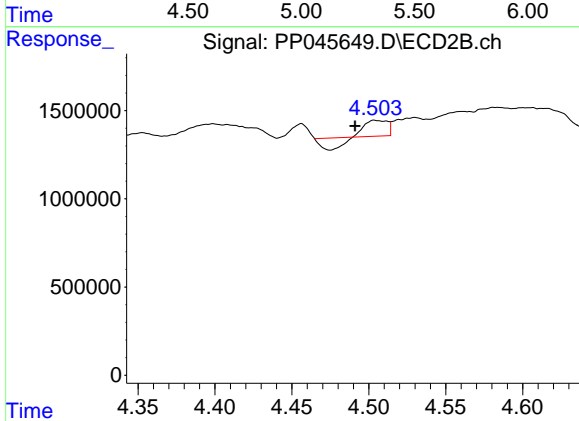
R.T.: 4.310 min
 Delta R.T.: 0.004 min
 Response: 1429001
 Conc: 17.00 ng/ml



#5 AR-1016-3

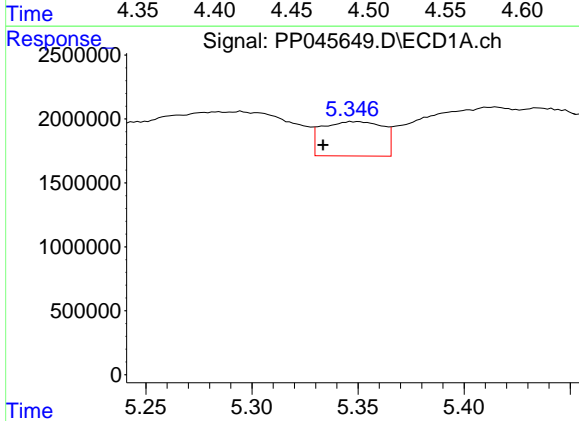
R.T.: 0.000 min
 Exp R.T.: 5.227 min
 Response: 0
 Conc: N.D.

Instrument :
 ECD_P
 ClientSampleId :



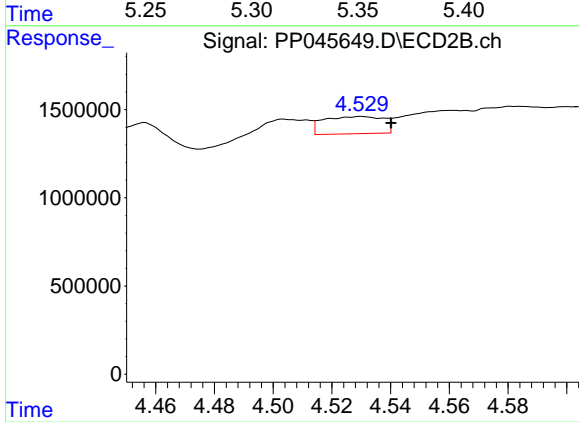
#5 AR-1016-3

R.T.: 4.504 min
 Delta R.T.: 0.013 min
 Response: 321337
 Conc: 7.09 ng/ml



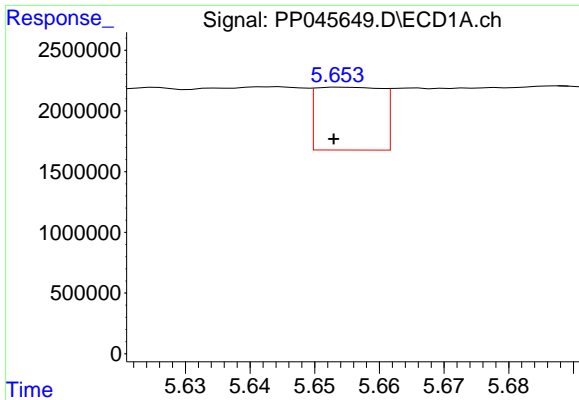
#6 AR-1016-4

R.T.: 5.350 min
 Delta R.T.: 0.016 min
 Response: 5351635
 Conc: 97.71 ng/ml



#6 AR-1016-4

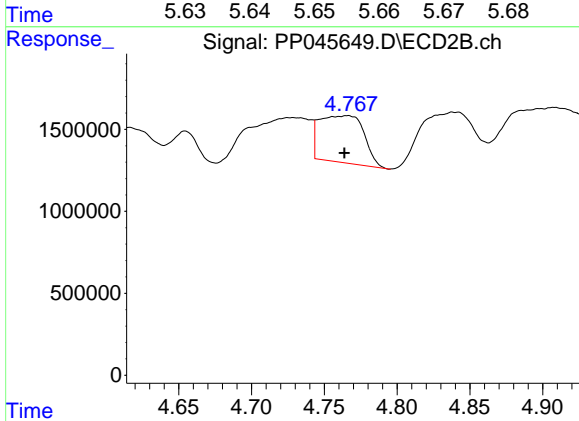
R.T.: 4.530 min
 Delta R.T.: -0.010 min
 Response: 1385959
 Conc: 37.51 ng/ml



#7 AR-1016-5

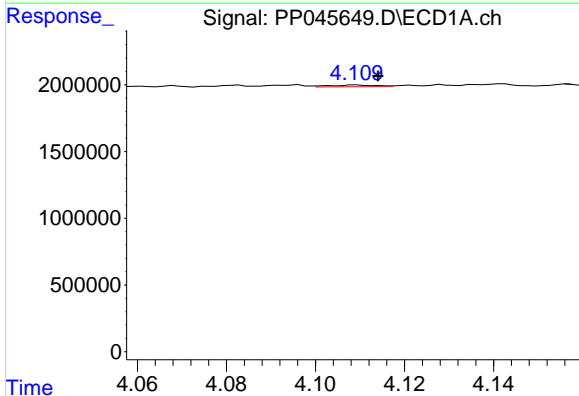
R.T.: 5.654 min
 Delta R.T.: 0.001 min
 Response: 3671051
 Conc: 70.85 ng/ml

Instrument :
 ECD_P
 ClientSampleId :



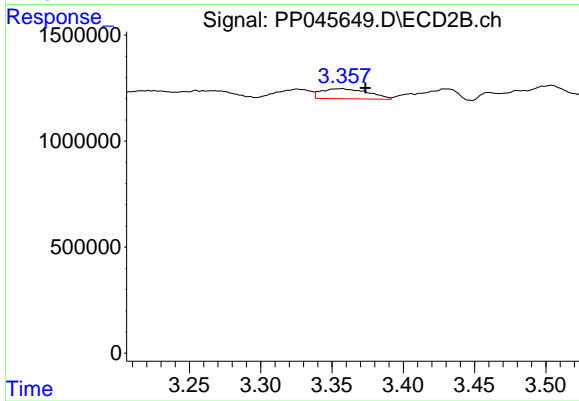
#7 AR-1016-5

R.T.: 4.766 min
 Delta R.T.: 0.002 min
 Response: 6073197
 Conc: 126.83 ng/ml



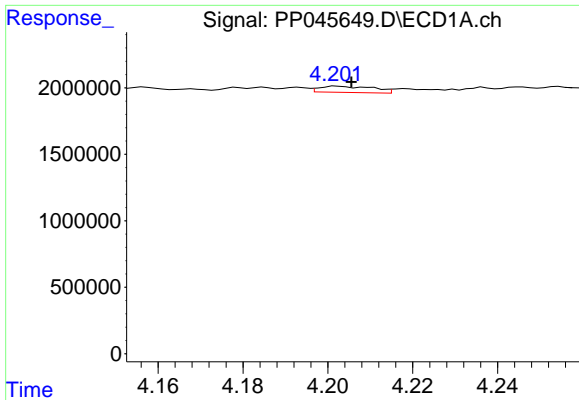
#8 AR-1221-1

R.T.: 4.109 min
 Delta R.T.: -0.005 min
 Response: 94750
 Conc: 3.77 ng/ml



#8 AR-1221-1

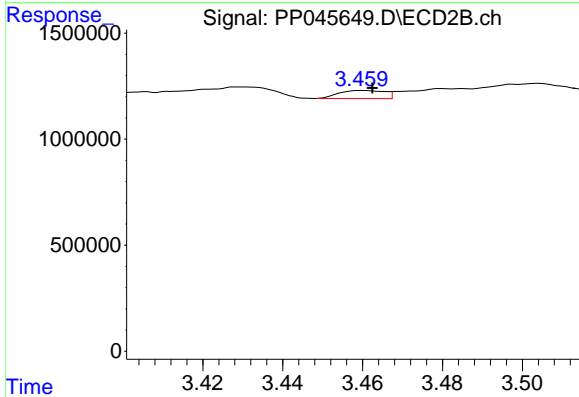
R.T.: 3.357 min
 Delta R.T.: -0.017 min
 Response: 1086424
 Conc: 52.24 ng/ml



#9 AR-1221-2

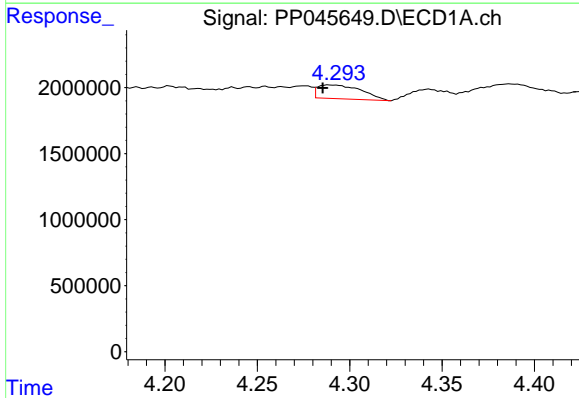
R.T.: 4.202 min
 Delta R.T.: -0.003 min
 Response: 421320
 Conc: 21.97 ng/ml

Instrument :
 ECD_P
 ClientSampleId :



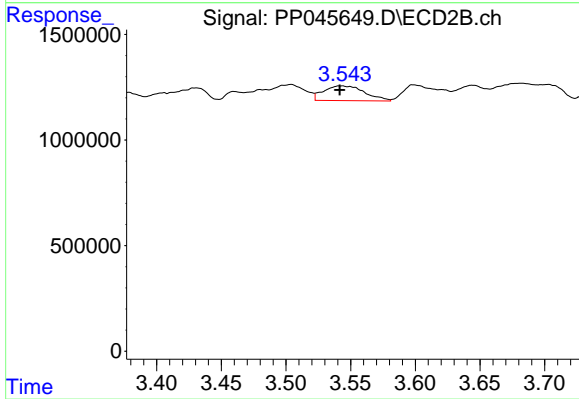
#9 AR-1221-2

R.T.: 3.460 min
 Delta R.T.: -0.002 min
 Response: 308257
 Conc: 19.47 ng/ml



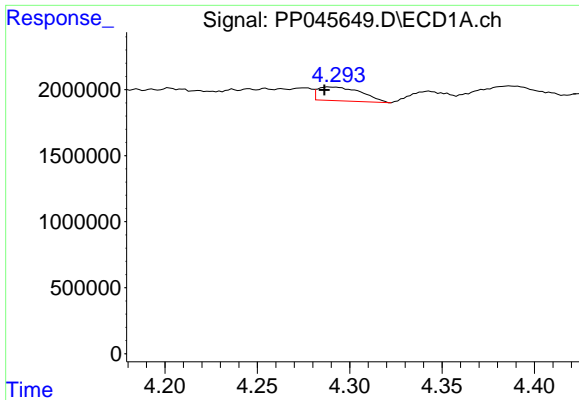
#10 AR-1221-3

R.T.: 4.289 min
 Delta R.T.: 0.004 min
 Response: 1707599
 Conc: 28.41 ng/ml



#10 AR-1221-3

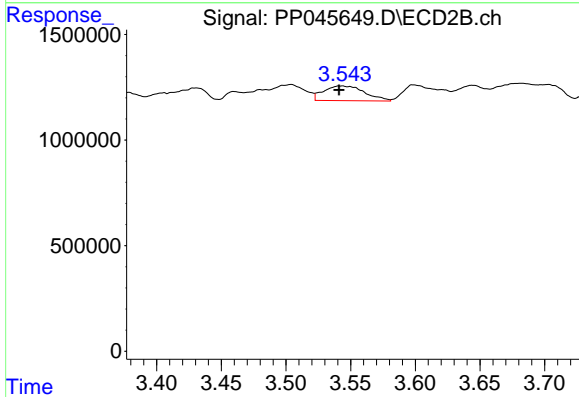
R.T.: 3.543 min
 Delta R.T.: 0.001 min
 Response: 1534630
 Conc: 32.81 ng/ml



#11 AR-1232-1

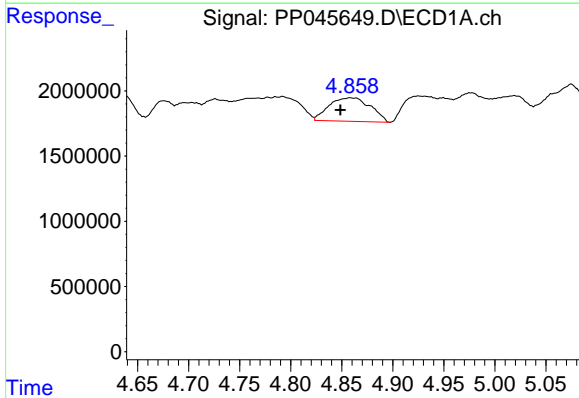
R.T.: 4.289 min
 Delta R.T.: 0.002 min
 Response: 1707599
 Conc: 34.63 ng/ml

Instrument :
 ECD_P
 ClientSampleId :



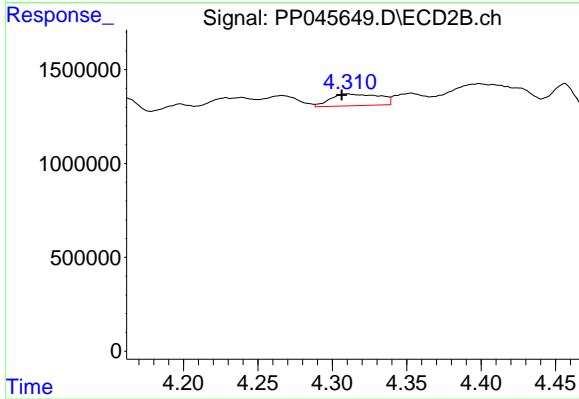
#11 AR-1232-1

R.T.: 3.543 min
 Delta R.T.: 0.002 min
 Response: 1534630
 Conc: 41.82 ng/ml



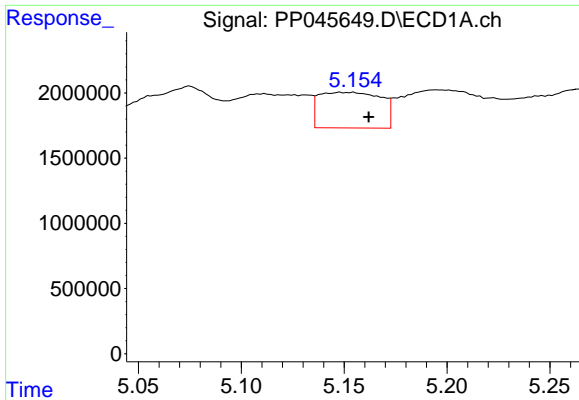
#12 AR-1232-2

R.T.: 4.858 min
 Delta R.T.: 0.010 min
 Response: 5066367
 Conc: 229.95 ng/ml



#12 AR-1232-2

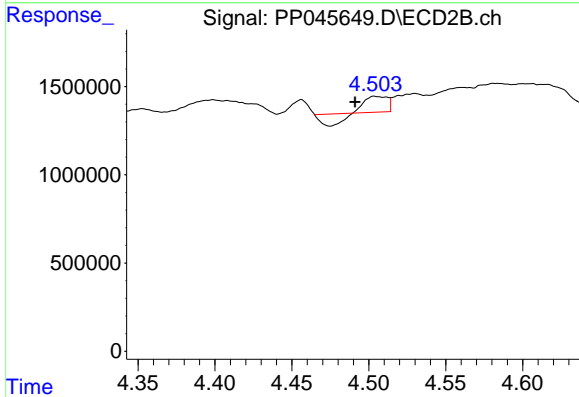
R.T.: 4.310 min
 Delta R.T.: 0.004 min
 Response: 1429001
 Conc: 41.87 ng/ml



#13 AR-1232-3

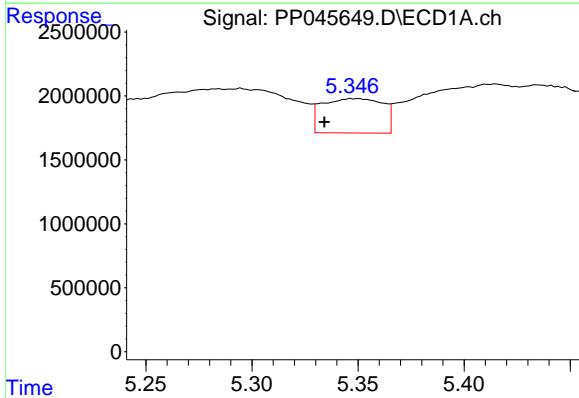
R.T.: 5.148 min
 Delta R.T.: -0.014 min
 Response: 5714307
 Conc: 132.73 ng/ml

Instrument :
 ECD_P
 ClientSampleId :



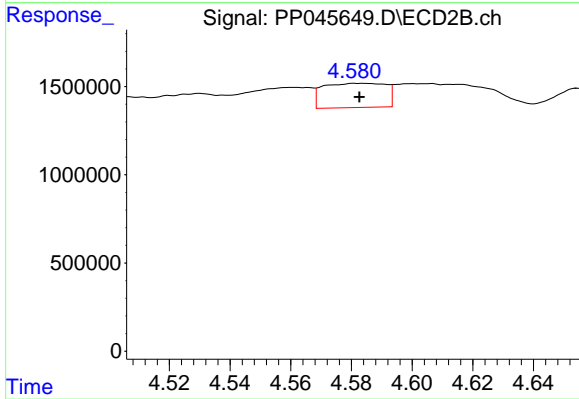
#13 AR-1232-3

R.T.: 4.504 min
 Delta R.T.: 0.013 min
 Response: 321337
 Conc: 17.57 ng/ml



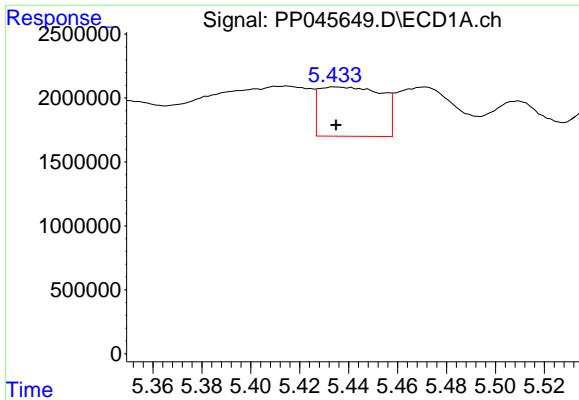
#14 AR-1232-4

R.T.: 5.350 min
 Delta R.T.: 0.016 min
 Response: 5351635
 Conc: 244.86 ng/ml



#14 AR-1232-4

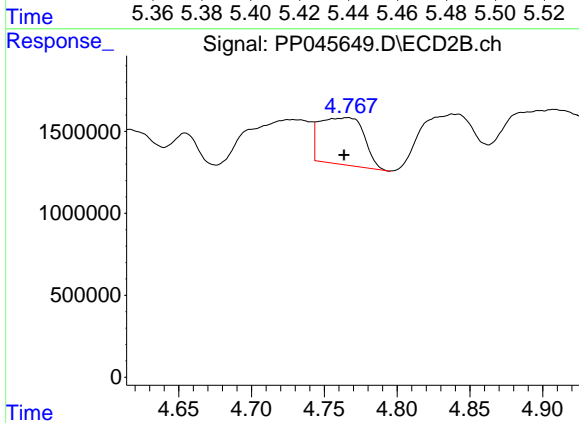
R.T.: 4.582 min
 Delta R.T.: 0.000 min
 Response: 1963259
 Conc: 119.86 ng/ml



#15 AR-1232-5

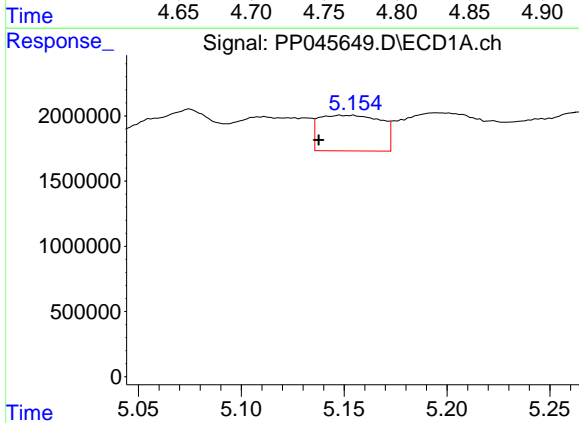
R.T.: 5.435 min
 Delta R.T.: 0.000 min
 Response: 6851307
 Conc: 430.17 ng/ml

Instrument :
 ECD_P
 ClientSampleId :



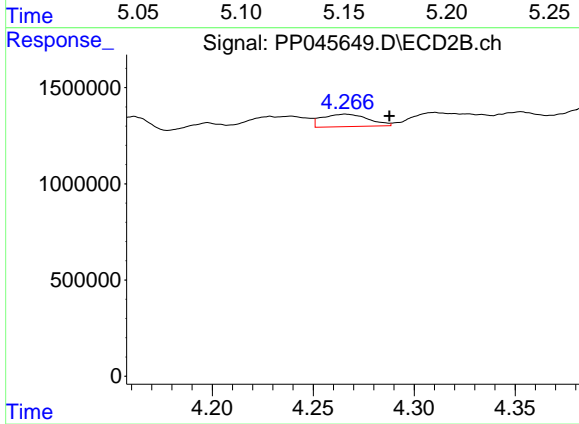
#15 AR-1232-5

R.T.: 4.766 min
 Delta R.T.: 0.002 min
 Response: 6073197
 Conc: 325.00 ng/ml



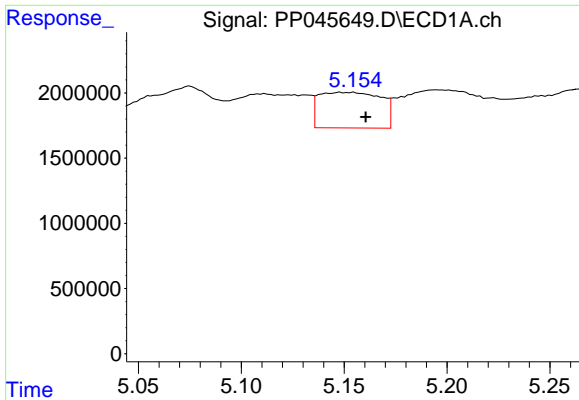
#16 AR-1242-1

R.T.: 5.148 min
 Delta R.T.: 0.011 min
 Response: 5714307
 Conc: 98.19 ng/ml



#16 AR-1242-1

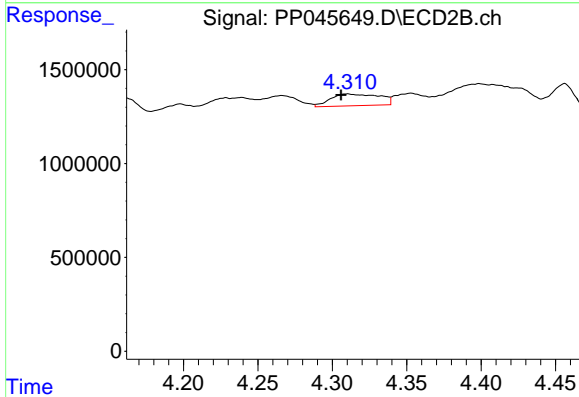
R.T.: 4.266 min
 Delta R.T.: -0.022 min
 Response: 1030310
 Conc: 21.17 ng/ml



#17 AR-1242-2

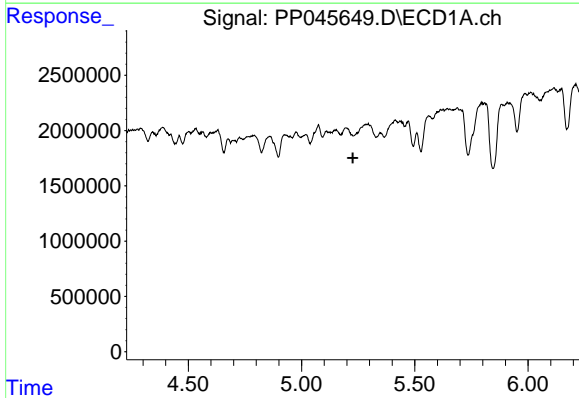
R.T.: 5.148 min
 Delta R.T.: -0.012 min
 Response: 5714307
 Conc: 65.85 ng/ml

Instrument :
 ECD_P
 ClientSampleId :



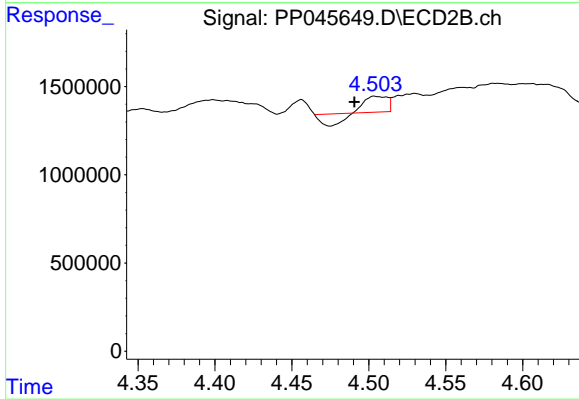
#17 AR-1242-2

R.T.: 4.310 min
 Delta R.T.: 0.004 min
 Response: 1429001
 Conc: 21.33 ng/ml



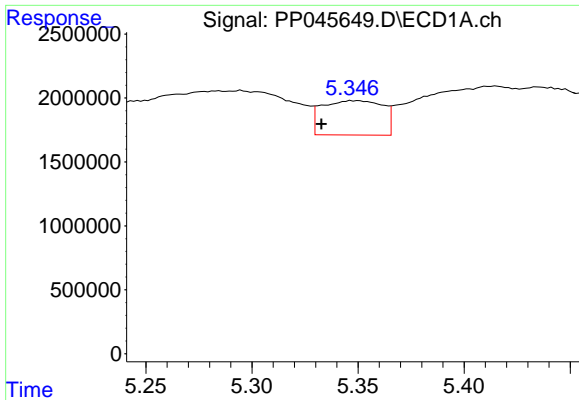
#18 AR-1242-3

R.T.: 0.000 min
 Exp R.T. : 5.227 min
 Response: 0
 Conc: N.D.



#18 AR-1242-3

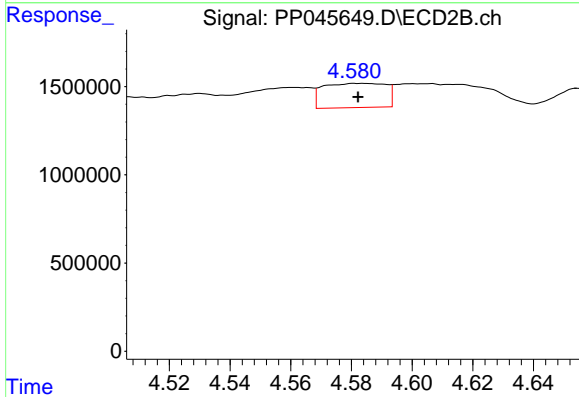
R.T.: 4.504 min
 Delta R.T.: 0.013 min
 Response: 321337
 Conc: 8.72 ng/ml



#19 AR-1242-4

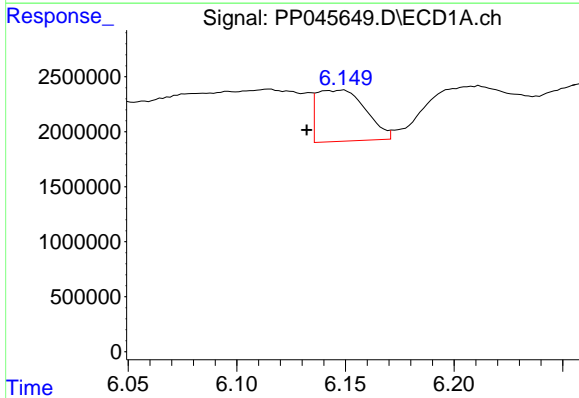
R.T.: 5.350 min
 Delta R.T.: 0.017 min
 Response: 5351635
 Conc: 118.66 ng/ml

Instrument :
 ECD_P
 ClientSampleId :



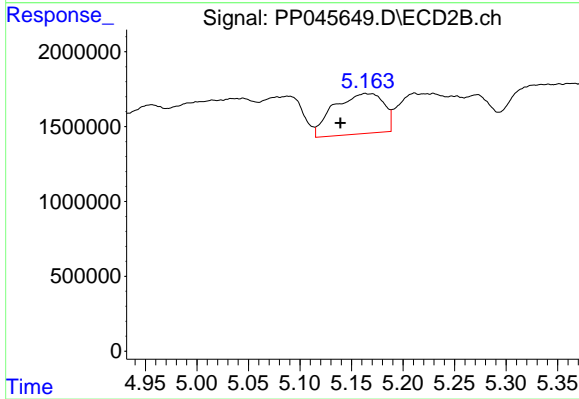
#19 AR-1242-4

R.T.: 4.582 min
 Delta R.T.: 0.000 min
 Response: 1963259
 Conc: 54.38 ng/ml



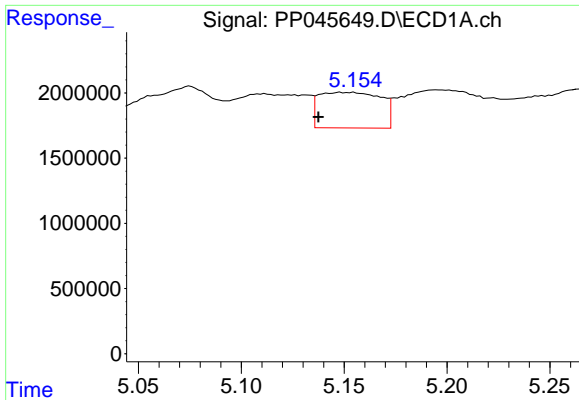
#20 AR-1242-5

R.T.: 6.149 min
 Delta R.T.: 0.017 min
 Response: 7299317
 Conc: 157.43 ng/ml



#20 AR-1242-5

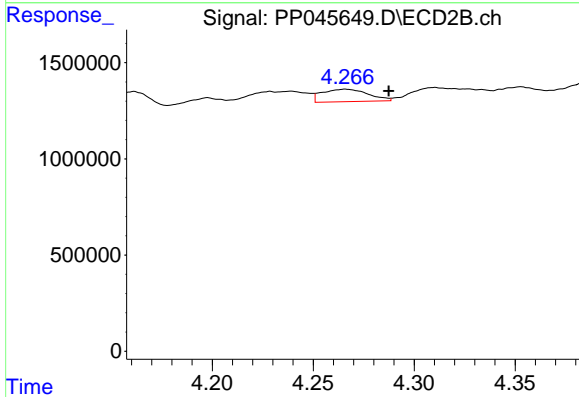
R.T.: 5.163 min
 Delta R.T.: 0.024 min
 Response: 9042836
 Conc: 190.20 ng/ml



#21 AR-1248-1

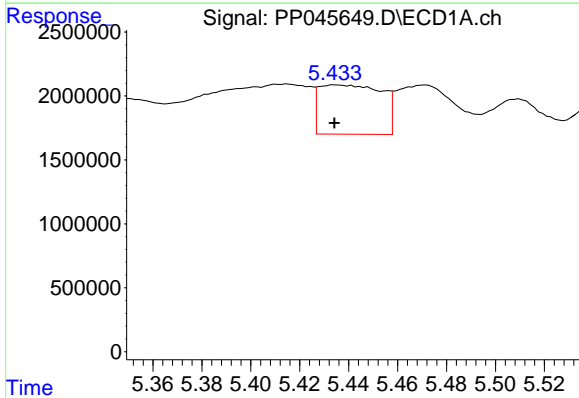
R.T.: 5.148 min
 Delta R.T.: 0.011 min
 Response: 5714307
 Conc: 124.85 ng/ml

Instrument :
 ECD_P
 ClientSampleId :



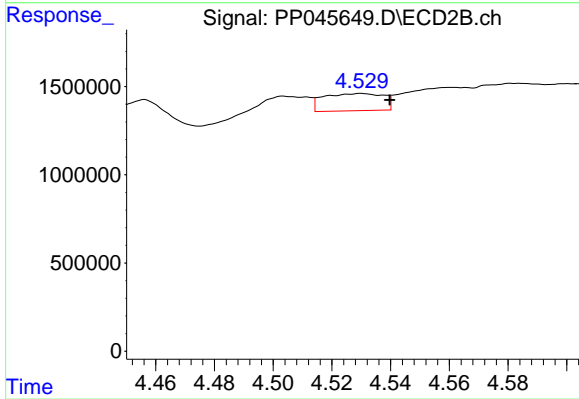
#21 AR-1248-1

R.T.: 4.266 min
 Delta R.T.: -0.021 min
 Response: 1030310
 Conc: 27.03 ng/ml



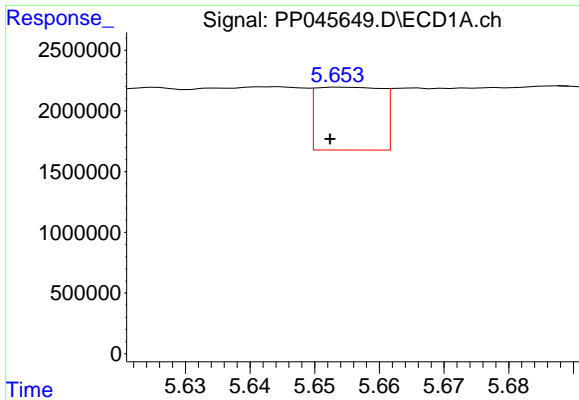
#22 AR-1248-2

R.T.: 5.435 min
 Delta R.T.: 0.000 min
 Response: 6851307
 Conc: 111.36 ng/ml



#22 AR-1248-2

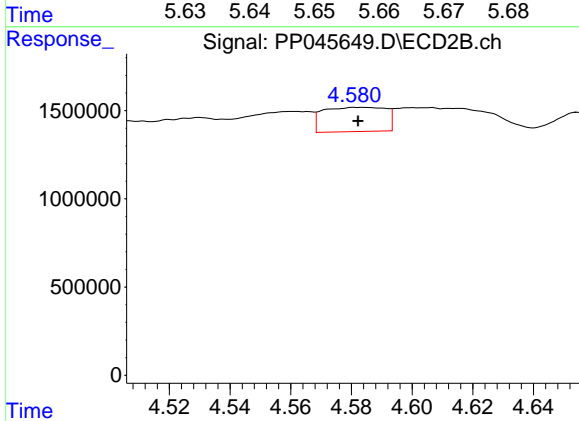
R.T.: 4.530 min
 Delta R.T.: -0.010 min
 Response: 1385959
 Conc: 26.91 ng/ml



#23 AR-1248-3

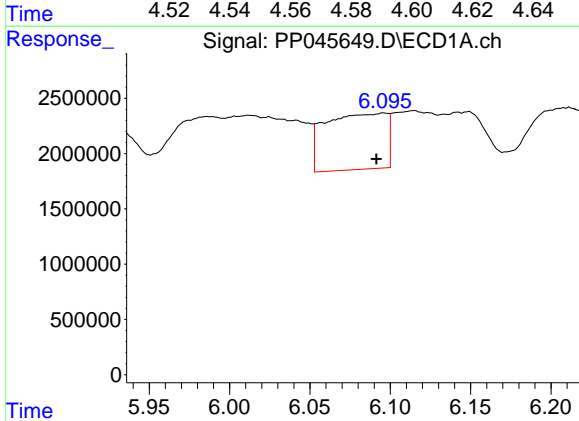
R.T.: 5.654 min
 Delta R.T.: 0.002 min
 Response: 3671051
 Conc: 51.33 ng/ml

Instrument :
 ECD_P
 ClientSampleId :



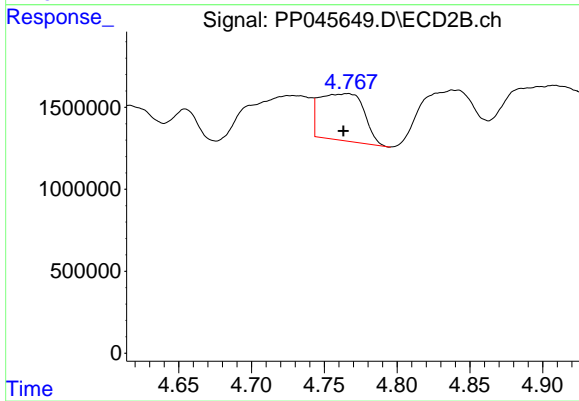
#23 AR-1248-3

R.T.: 4.582 min
 Delta R.T.: 0.000 min
 Response: 1963259
 Conc: 36.46 ng/ml



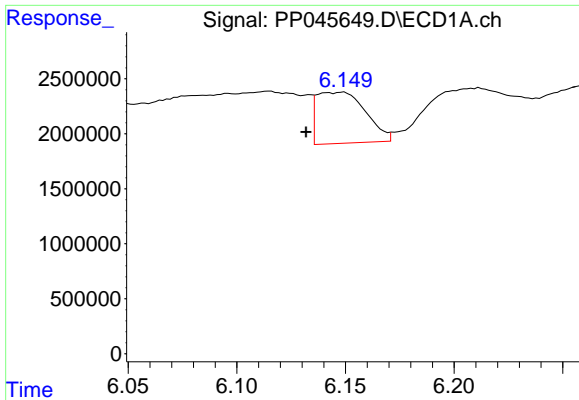
#24 AR-1248-4

R.T.: 6.096 min
 Delta R.T.: 0.005 min
 Response: 13456868
 Conc: 179.00 ng/ml



#24 AR-1248-4

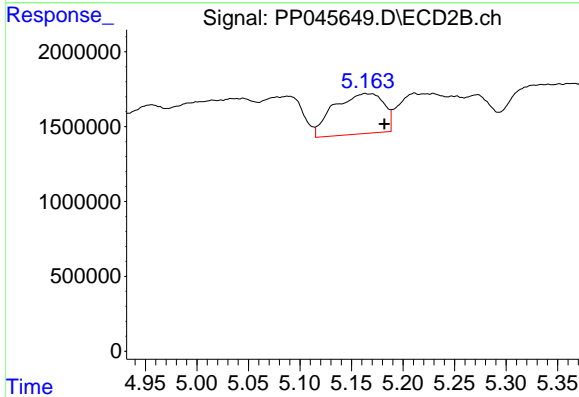
R.T.: 4.766 min
 Delta R.T.: 0.003 min
 Response: 6073197
 Conc: 94.39 ng/ml



#25 AR-1248-5

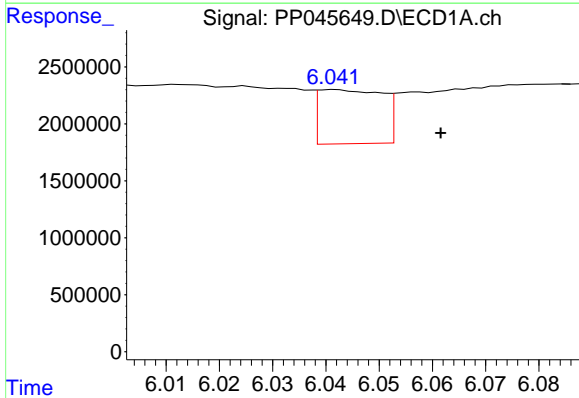
R.T.: 6.149 min
 Delta R.T.: 0.017 min
 Response: 7299317
 Conc: 97.26 ng/ml

Instrument :
 ECD_P
 ClientSampleId :



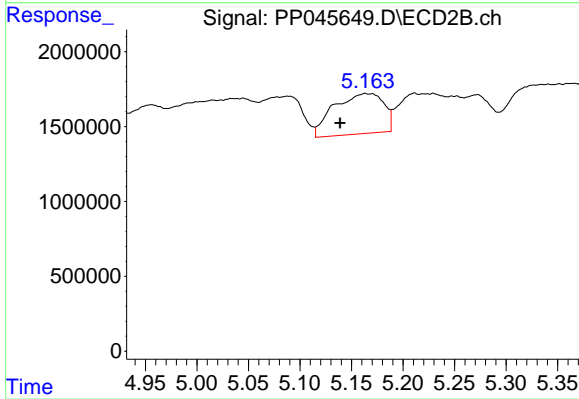
#25 AR-1248-5

R.T.: 5.163 min
 Delta R.T.: -0.019 min
 Response: 9042836
 Conc: 139.01 ng/ml



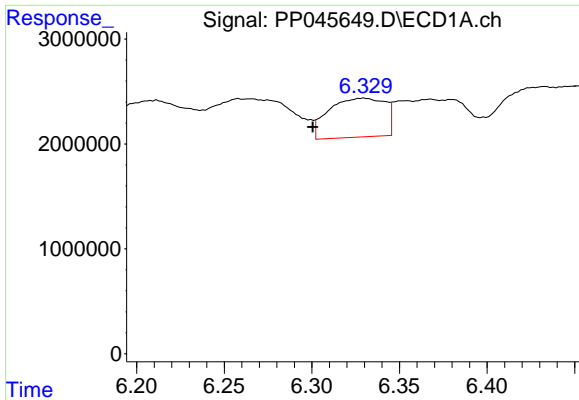
#26 AR-1254-1

R.T.: 6.042 min
 Delta R.T.: -0.020 min
 Response: 3961380
 Conc: 55.64 ng/ml



#26 AR-1254-1

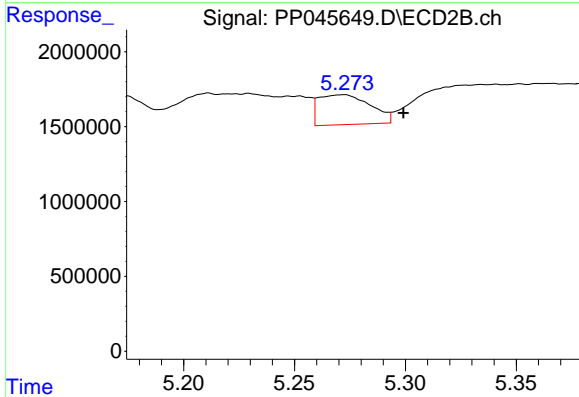
R.T.: 5.163 min
 Delta R.T.: 0.024 min
 Response: 9042836
 Conc: 92.93 ng/ml



#27 AR-1254-2

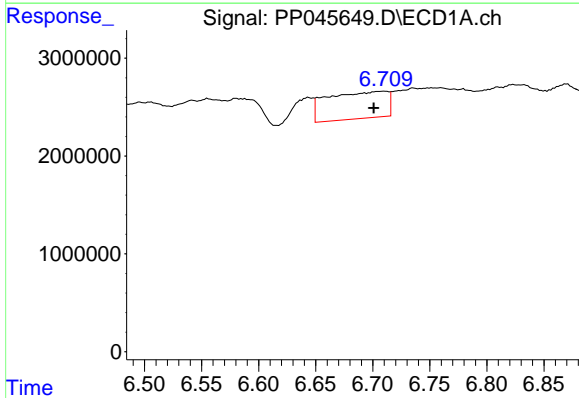
R.T.: 6.330 min
 Delta R.T.: 0.029 min
 Response: 8263658
 Conc: 76.50 ng/ml

Instrument :
 ECD_P
 ClientSampleId :



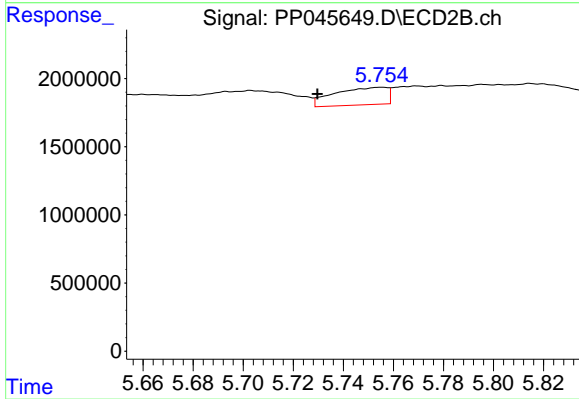
#27 AR-1254-2

R.T.: 5.272 min
 Delta R.T.: -0.027 min
 Response: 3253278
 Conc: 39.89 ng/ml



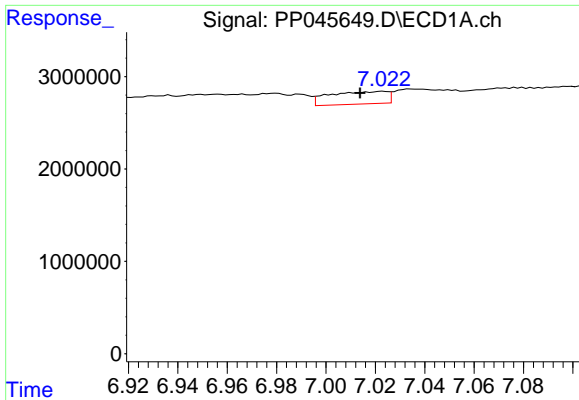
#28 AR-1254-3

R.T.: 6.711 min
 Delta R.T.: 0.010 min
 Response: 10114828
 Conc: 91.22 ng/ml



#28 AR-1254-3

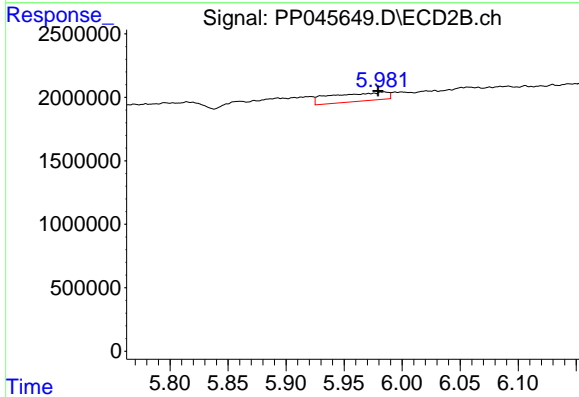
R.T.: 5.755 min
 Delta R.T.: 0.026 min
 Response: 1884614
 Conc: 15.24 ng/ml



#29 AR-1254-4

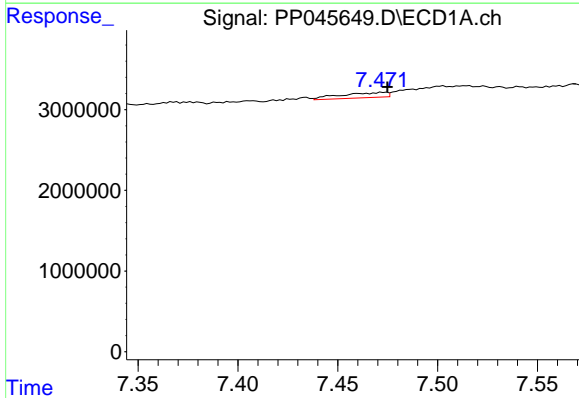
R.T.: 7.023 min
 Delta R.T.: 0.009 min
 Response: 2206939
 Conc: 27.46 ng/ml

Instrument :
 ECD_P
 ClientSampleId :



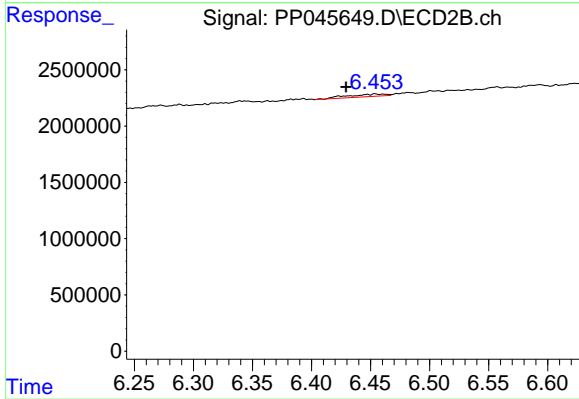
#29 AR-1254-4

R.T.: 5.984 min
 Delta R.T.: 0.005 min
 Response: 2283580
 Conc: 28.48 ng/ml



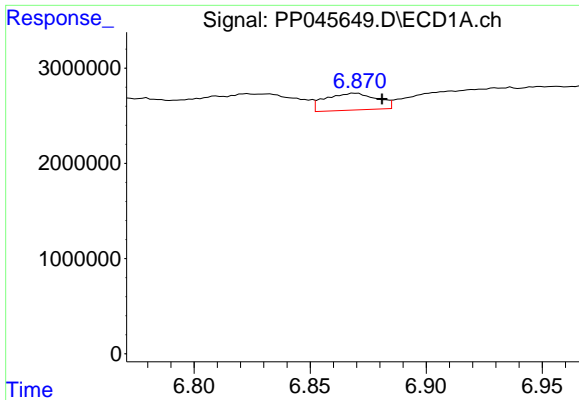
#30 AR-1254-5

R.T.: 7.473 min
 Delta R.T.: -0.002 min
 Response: 1023659
 Conc: 12.80 ng/ml



#30 AR-1254-5

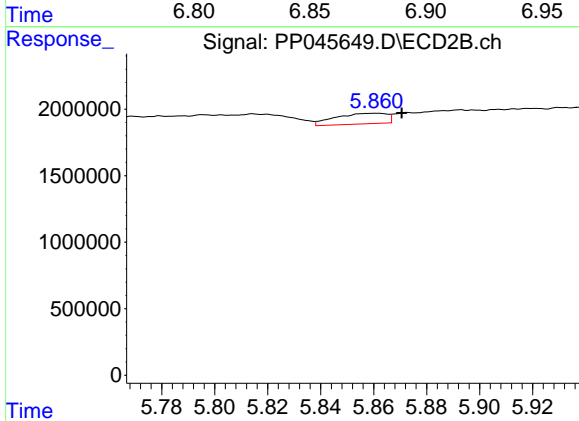
R.T.: 6.454 min
 Delta R.T.: 0.025 min
 Response: 521116
 Conc: 4.77 ng/ml



#31 AR-1260-1

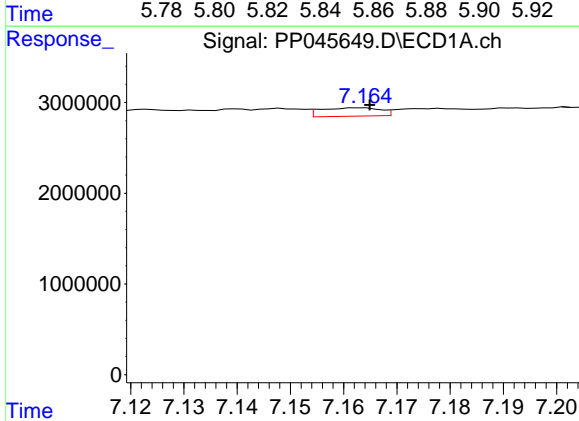
R.T.: 6.870 min
 Delta R.T.: -0.011 min
 Response: 2734923
 Conc: 34.29 ng/ml

Instrument :
 ECD_P
 ClientSampleId :



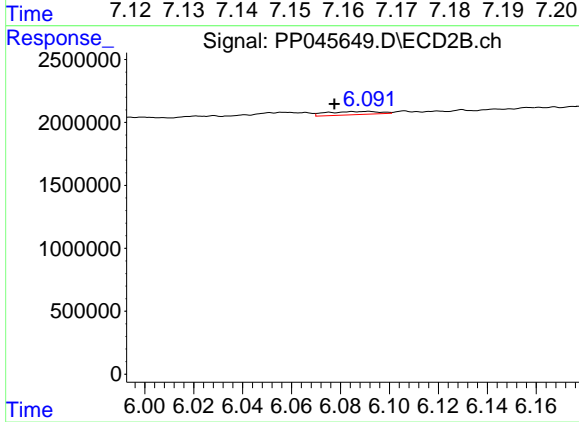
#31 AR-1260-1

R.T.: 5.861 min
 Delta R.T.: -0.010 min
 Response: 1087975
 Conc: 13.12 ng/ml



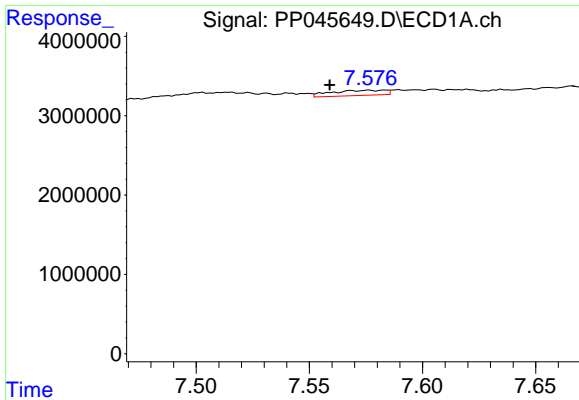
#32 AR-1260-2

R.T.: 7.163 min
 Delta R.T.: -0.002 min
 Response: 717441
 Conc: 7.96 ng/ml



#32 AR-1260-2

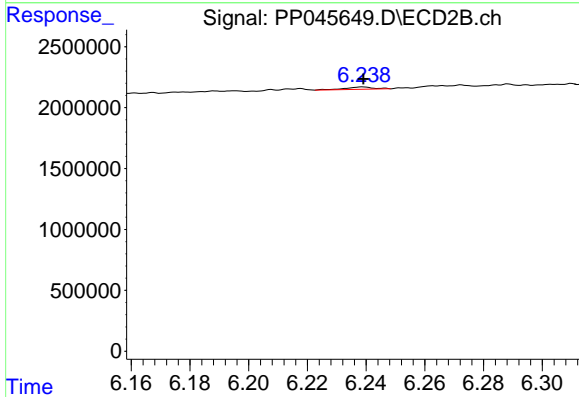
R.T.: 6.091 min
 Delta R.T.: 0.014 min
 Response: 389548
 Conc: 4.00 ng/ml



#33 AR-1260-3

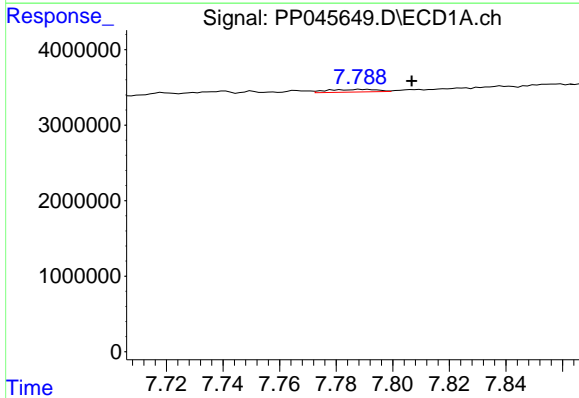
R.T.: 7.576 min
 Delta R.T.: 0.017 min
 Response: 1090168
 Conc: 15.74 ng/ml

Instrument :
 ECD_P
 ClientSampleId :



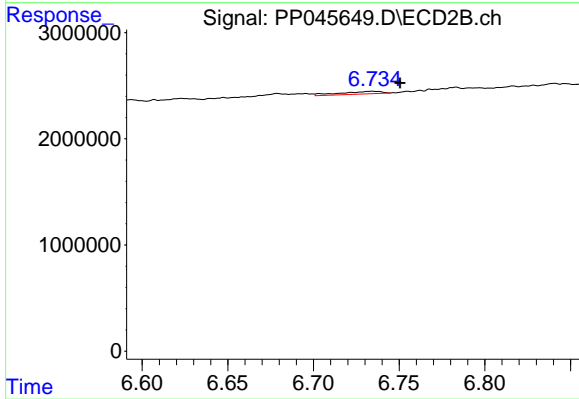
#33 AR-1260-3

R.T.: 6.239 min
 Delta R.T.: 0.000 min
 Response: 124195
 Conc: 1.34 ng/ml



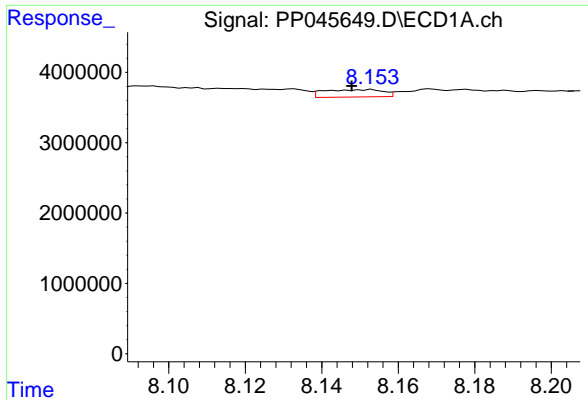
#34 AR-1260-4

R.T.: 7.789 min
 Delta R.T.: -0.017 min
 Response: 431800
 Conc: 5.60 ng/ml



#34 AR-1260-4

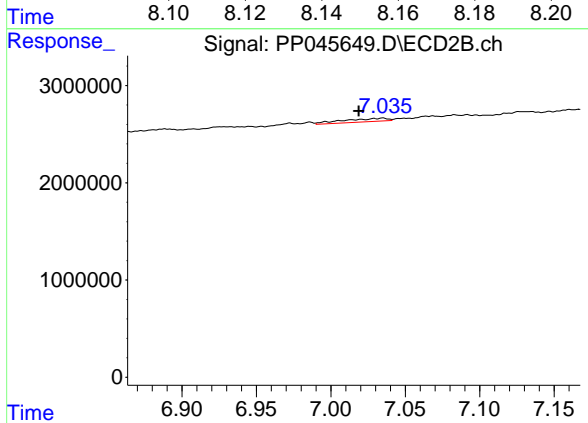
R.T.: 6.735 min
 Delta R.T.: -0.016 min
 Response: 404783
 Conc: 5.28 ng/ml



#35 AR-1260-5

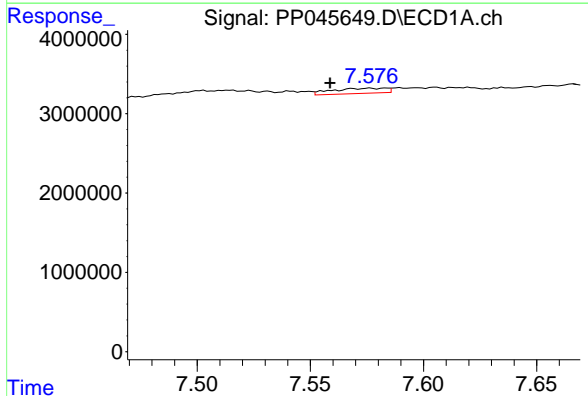
R.T.: 8.153 min
 Delta R.T.: 0.005 min
 Response: 1117515
 Conc: 7.91 ng/ml

Instrument :
 ECD_P
 ClientSampleId :



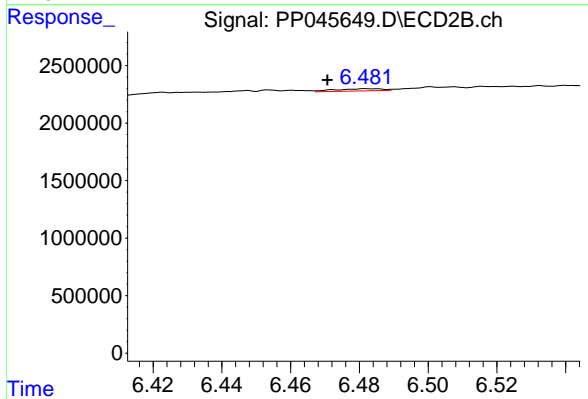
#35 AR-1260-5

R.T.: 7.035 min
 Delta R.T.: 0.016 min
 Response: 719234
 Conc: 4.07 ng/ml



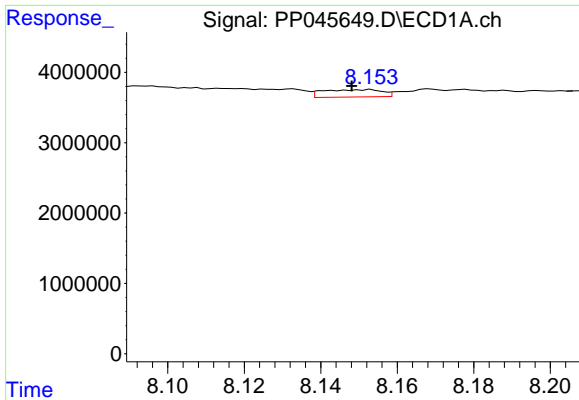
#36 AR-1262-1

R.T.: 7.576 min
 Delta R.T.: 0.018 min
 Response: 1090168
 Conc: 10.81 ng/ml



#36 AR-1262-1

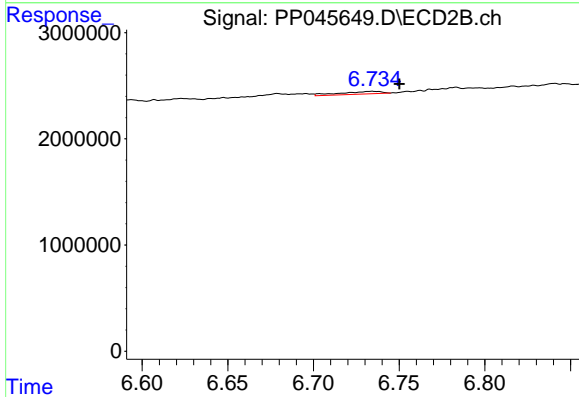
R.T.: 6.482 min
 Delta R.T.: 0.012 min
 Response: 177428
 Conc: 1.58 ng/ml



#37 AR-1262-2

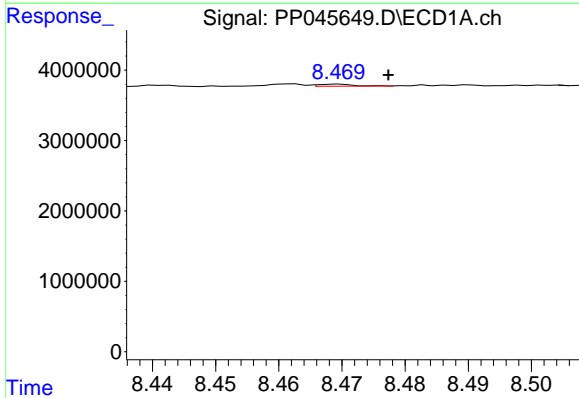
R.T.: 8.153 min
 Delta R.T.: 0.005 min
 Response: 1117515
 Conc: 6.64 ng/ml

Instrument :
 ECD_P
 ClientSampleId :



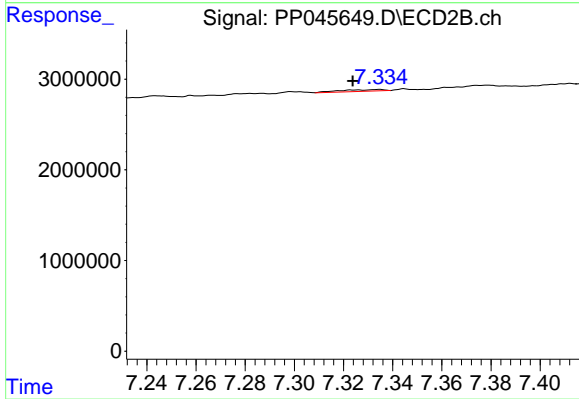
#37 AR-1262-2

R.T.: 6.735 min
 Delta R.T.: -0.016 min
 Response: 404783
 Conc: 4.01 ng/ml



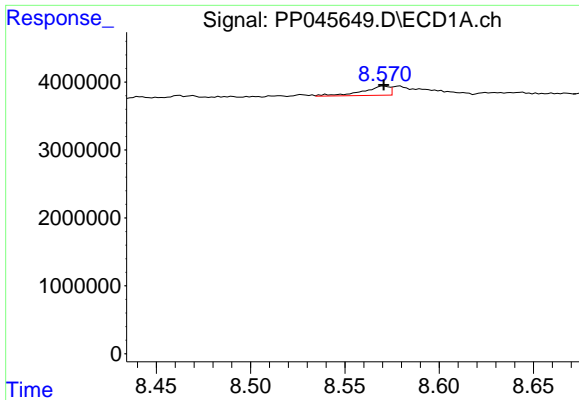
#38 AR-1262-3

R.T.: 8.469 min
 Delta R.T.: -0.008 min
 Response: 110053
 Conc: 0.95 ng/ml



#38 AR-1262-3

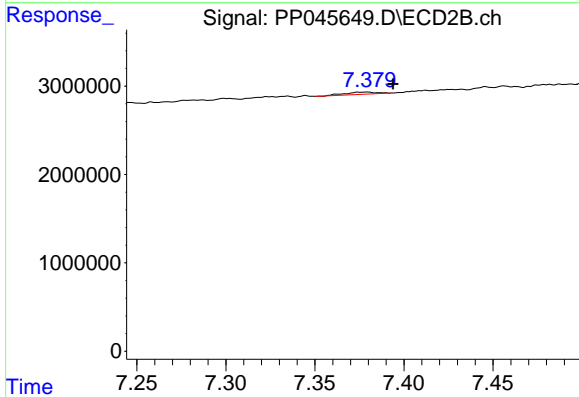
R.T.: 7.334 min
 Delta R.T.: 0.011 min
 Response: 231416
 Conc: 2.86 ng/ml



#39 AR-1262-4

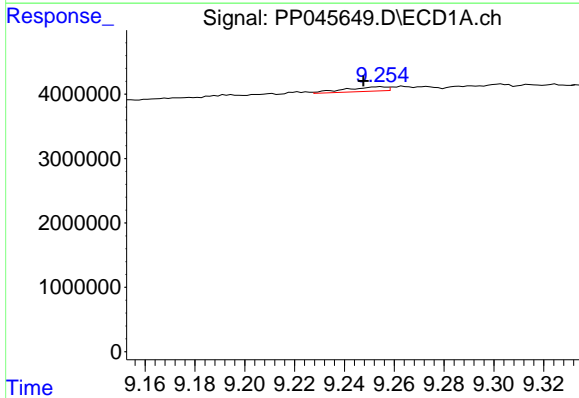
R.T.: 8.571 min
 Delta R.T.: 0.000 min
 Response: 1321280
 Conc: 21.61 ng/ml

Instrument :
 ECD_P
 ClientSampleId :



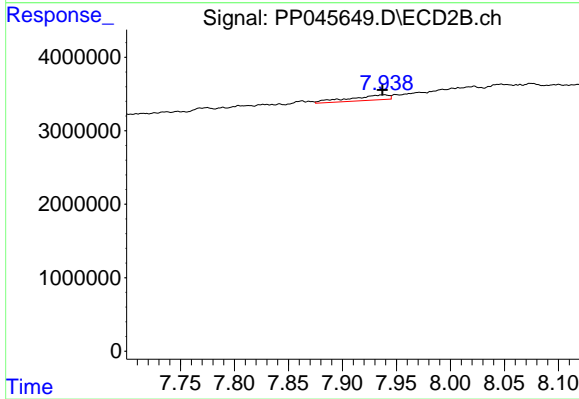
#39 AR-1262-4

R.T.: 7.379 min
 Delta R.T.: -0.015 min
 Response: 309479
 Conc: 2.09 ng/ml



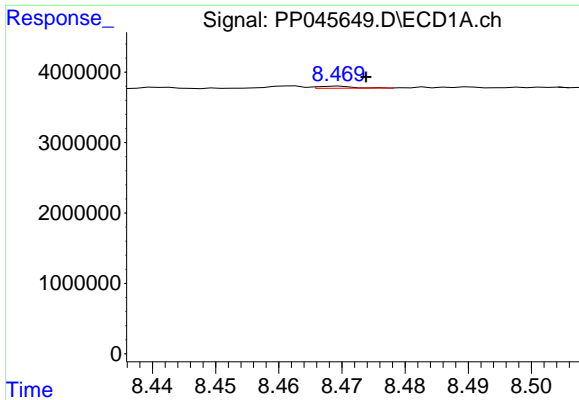
#40 AR-1262-5

R.T.: 9.255 min
 Delta R.T.: 0.007 min
 Response: 799878
 Conc: 13.09 ng/ml



#40 AR-1262-5

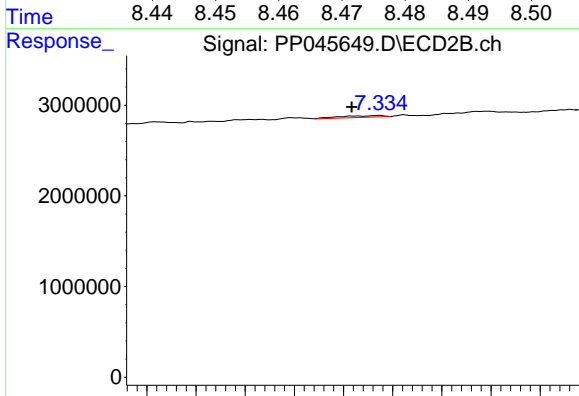
R.T.: 7.939 min
 Delta R.T.: 0.002 min
 Response: 1786724
 Conc: 24.55 ng/ml



#41 AR-1268-1

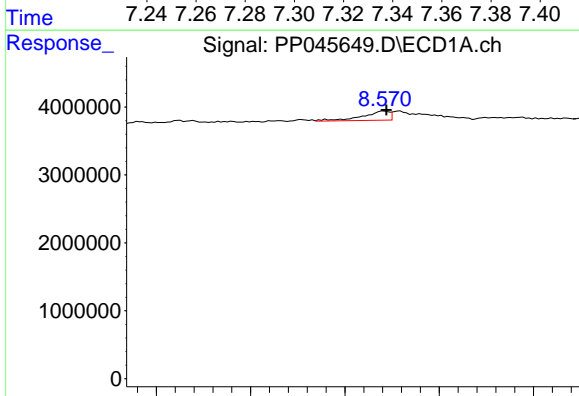
R.T.: 8.469 min
 Delta R.T.: -0.004 min
 Response: 110053
 Conc: 0.54 ng/ml

Instrument :
 ECD_P
 ClientSampleId :



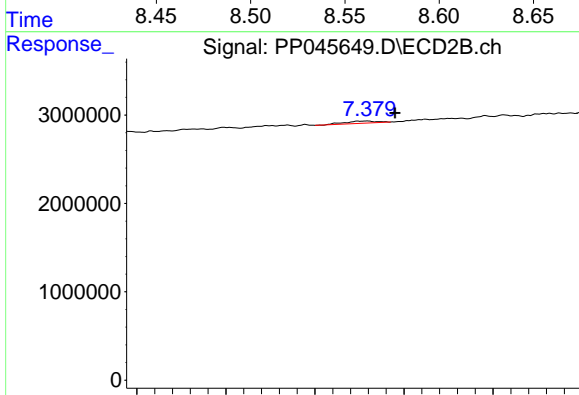
#41 AR-1268-1

R.T.: 7.334 min
 Delta R.T.: 0.011 min
 Response: 231416
 Conc: 1.03 ng/ml



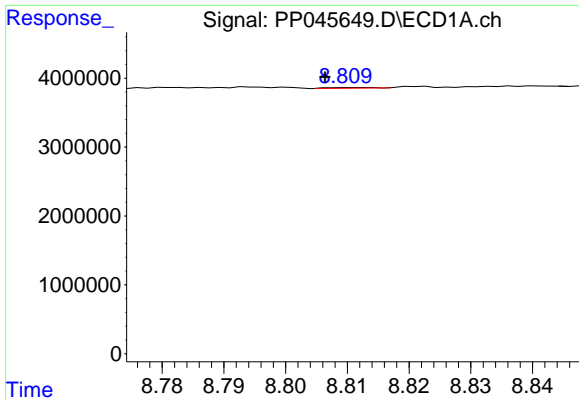
#42 AR-1268-2

R.T.: 8.571 min
 Delta R.T.: -0.001 min
 Response: 1321280
 Conc: 7.07 ng/ml



#42 AR-1268-2

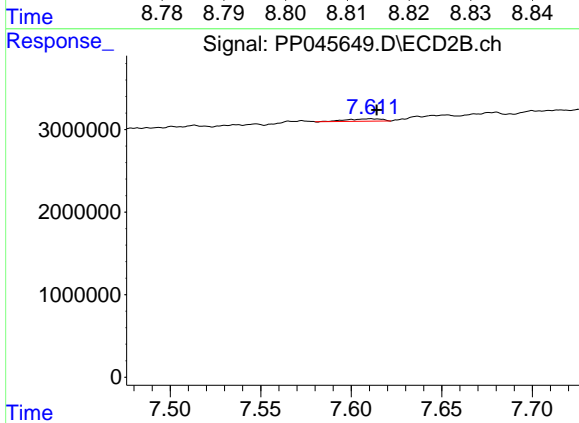
R.T.: 7.379 min
 Delta R.T.: -0.016 min
 Response: 309479
 Conc: 1.53 ng/ml



#43 AR-1268-3

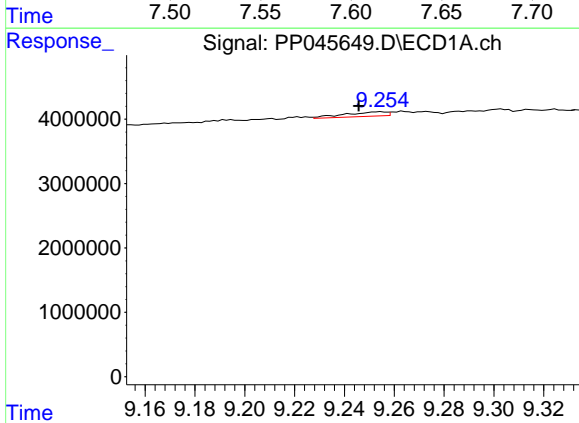
R.T.: 8.811 min
 Delta R.T.: 0.004 min
 Response: 46725
 Conc: 0.28 ng/ml

Instrument :
 ECD_P
 ClientSampleId :



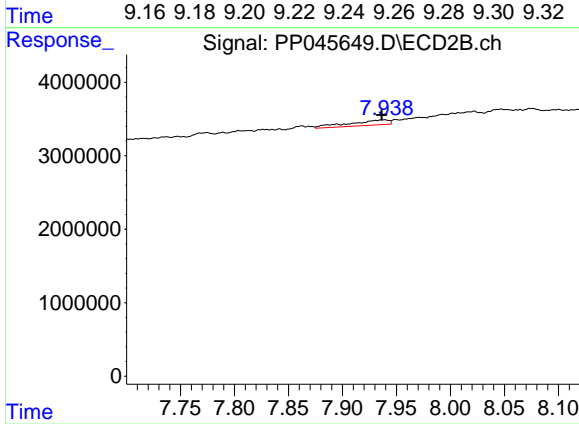
#43 AR-1268-3

R.T.: 7.611 min
 Delta R.T.: -0.004 min
 Response: 395767
 Conc: 2.31 ng/ml



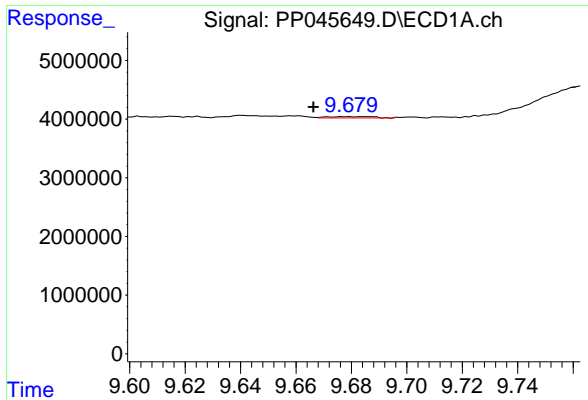
#44 AR-1268-4

R.T.: 9.255 min
 Delta R.T.: 0.009 min
 Response: 799878
 Conc: 11.95 ng/ml



#44 AR-1268-4

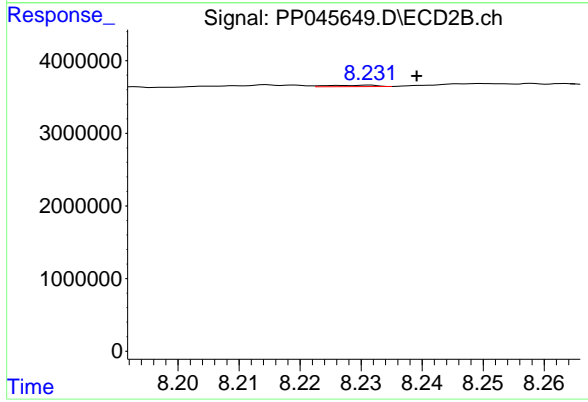
R.T.: 7.939 min
 Delta R.T.: 0.002 min
 Response: 1786724
 Conc: 22.57 ng/ml



#45 AR-1268-5

R.T.: 9.679 min
 Delta R.T.: 0.012 min
 Response: 247823
 Conc: 0.48 ng/ml

Instrument :
 ECD_P
 ClientSampleId :



#45 AR-1268-5

R.T.: 8.231 min
 Delta R.T.: -0.008 min
 Response: 103230
 Conc: 0.19 ng/ml