

Data Path : Z:\pestpcbsrv\HPCHEM1\ECD_P\Data\PP040623\
 Data File : PP056675.D
 Signal(s) : Signal #1: ECD1A.ch Signal #2: ECD2B.ch
 Acq On : 06 Apr 2023 19:50
 Operator : YP\AJ
 Sample : AR1242ICC750
 Misc :
 ALS Vial : 11 Sample Multiplier: 1

Instrument :
 ECD_P
 ClientSampleId :
 AR1242ICC750

Integration File signal 1: autoint1.e
 Integration File signal 2: autoint2.e
 Quant Time: Apr 06 23:50:35 2023
 Quant Method : Z:\pestpcbsrv\HPCHEM1\ECD_P\methods\PP040623.M
 Quant Title : GC EXTRACTABLES
 QLast Update : Thu Apr 06 23:44:31 2023
 Response via : Initial Calibration
 Integrator: ChemStation

Volume Inj. : 2 µl
 Signal #1 Phase : ZB-MR1 Signal #2 Phase: ZB-MR2
 Signal #1 Info : 30Mx0.32mmx 0.50µ Signal #2 Info : 30M x 0.32mm x 0.25µm

Compound	RT#1	RT#2	Resp#1	Resp#2	ng/ml	ng/ml

System Monitoring Compounds						
1) SA Tetrachlo...	4.436	3.665	159.9E6	128.4E6	74.378	74.517
2) SA Decachlor...	10.270	8.749	96233293	112.7E6	74.699	74.675
Target Compounds						
16) L4 AR-1242-1	5.611	4.766	36425893	31142238	749.838	742.626
17) L4 AR-1242-2	5.633	4.785	53079631	43755902	744.939	746.768
18) L4 AR-1242-3	5.697	4.964	33408008	23918554	749.361	744.888
19) L4 AR-1242-4	5.796	5.047	26619010	26432252	750.411	744.386
20) L4 AR-1242-5	6.537	5.577	24232481	29126673	745.098	745.950

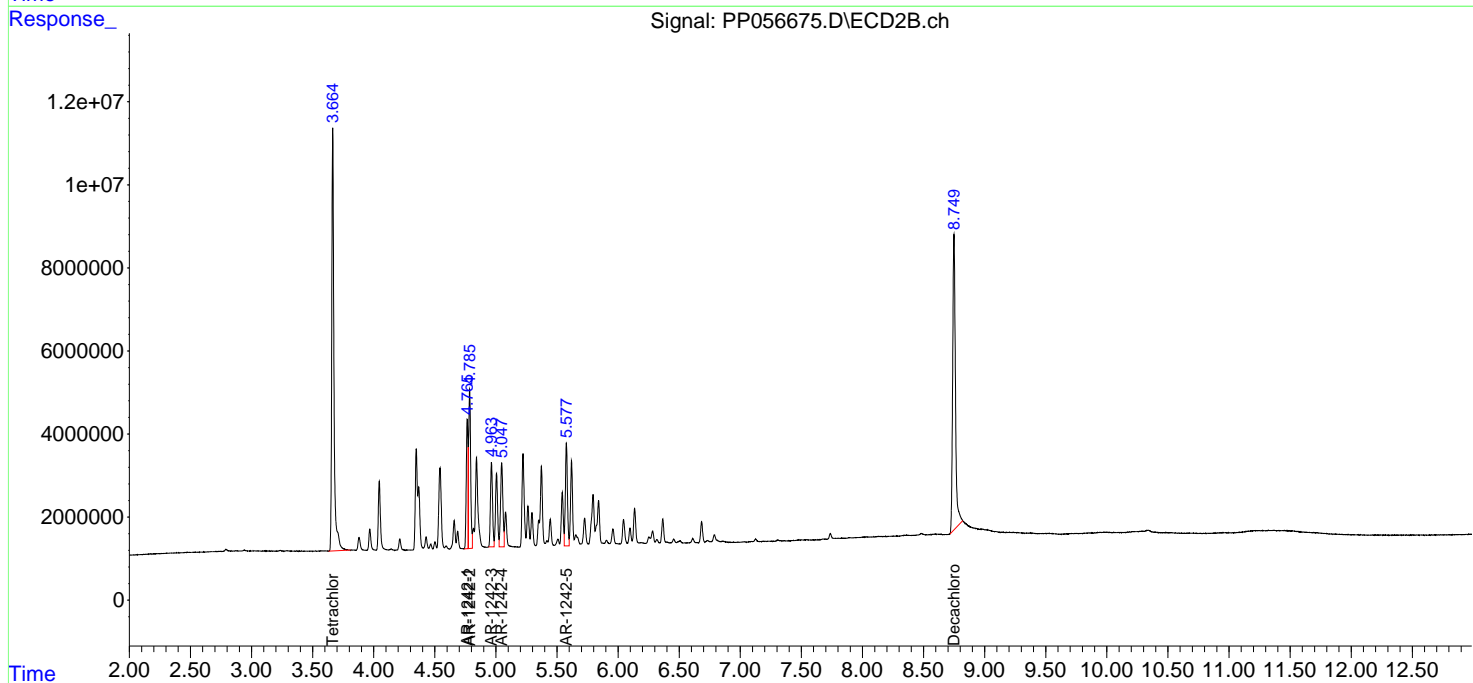
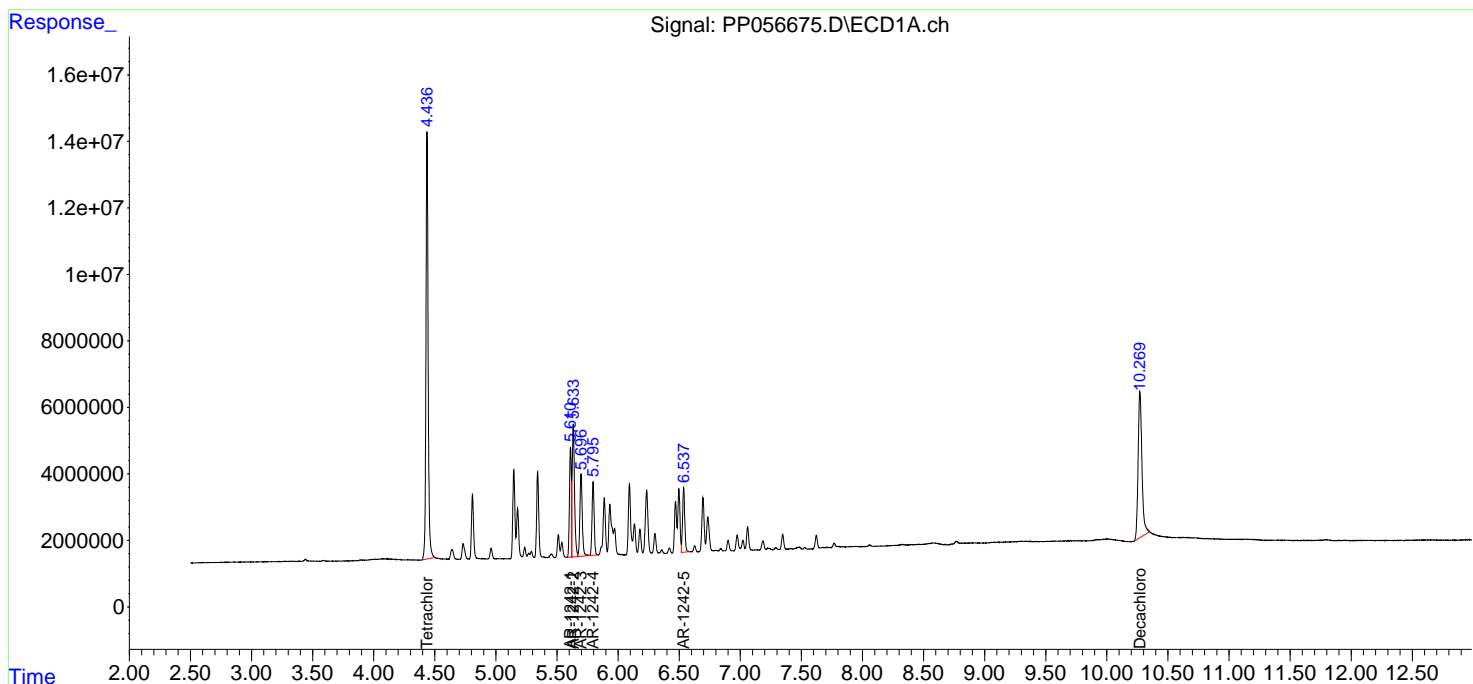
(f)=RT Delta > 1/2 Window (#)=Amounts differ by > 25% (m)=manual int.

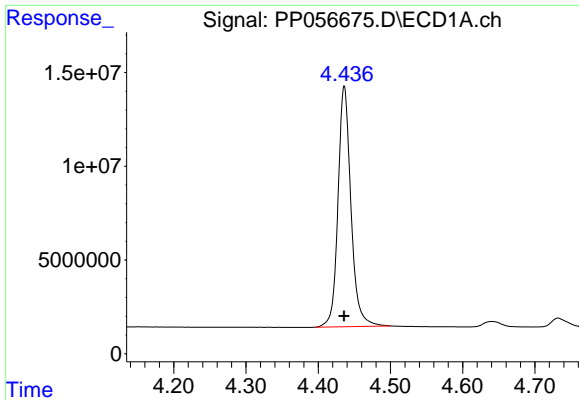
Data Path : Z:\pestpcbsrv\HPCHEM1\ECD_P\Data\PP040623\
 Data File : PP056675.D
 Signal(s) : Signal #1: ECD1A.ch Signal #2: ECD2B.ch
 Acq On : 06 Apr 2023 19:50
 Operator : YP\AJ
 Sample : AR1242ICC750
 Misc :
 ALS Vial : 11 Sample Multiplier: 1

Instrument :
 ECD_P
 ClientSampleId :
 AR1242ICC750

Integration File signal 1: autoint1.e
 Integration File signal 2: autoint2.e
 Quant Time: Apr 06 23:50:35 2023
 Quant Method : Z:\pestpcbsrv\HPCHEM1\ECD_P\methods\PP040623.M
 Quant Title : GC EXTRACTABLES
 QLast Update : Thu Apr 06 23:44:31 2023
 Response via : Initial Calibration
 Integrator: ChemStation

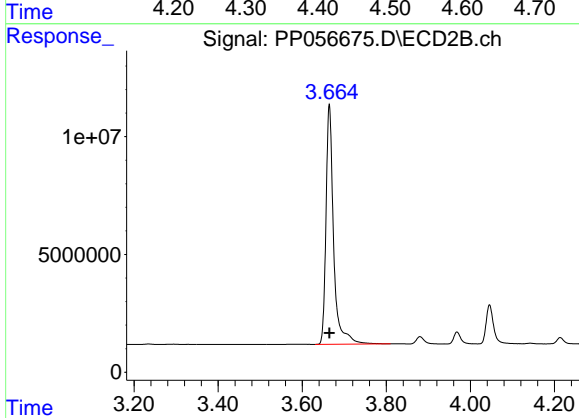
Volume Inj. : 2 µl
 Signal #1 Phase : ZB-MR1 Signal #2 Phase: ZB-MR2
 Signal #1 Info : 30Mx0.32mmx 0.50µ Signal #2 Info : 30M x 0.32mm x 0.25µm



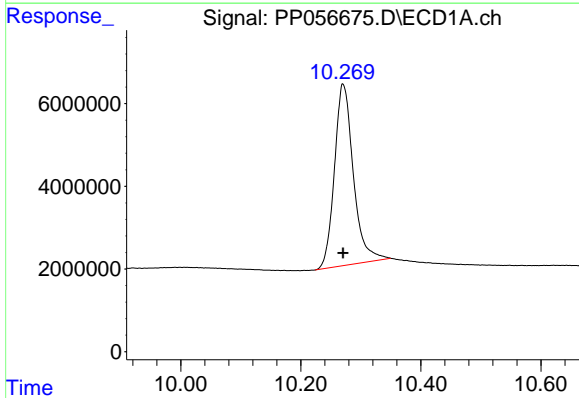


#1 Tetrachloro-m-xylene
 R.T.: 4.436 min
 Delta R.T.: 0.000 min
 Response: 159900514
 Conc: 74.38 ng/ml

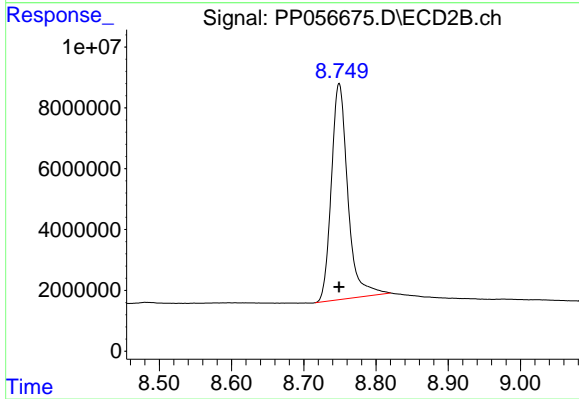
Instrument :
 ECD_P
 ClientSampleId :
 AR1242ICC750



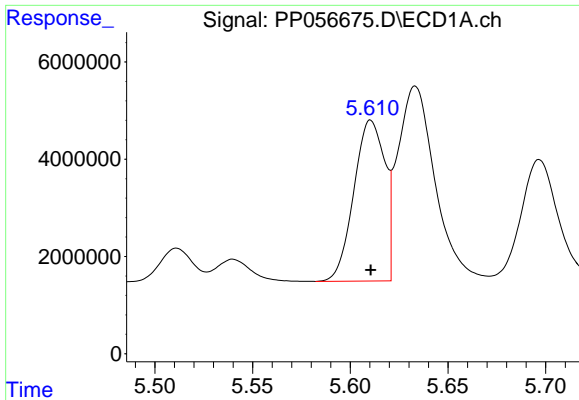
#1 Tetrachloro-m-xylene
 R.T.: 3.665 min
 Delta R.T.: 0.000 min
 Response: 128369965
 Conc: 74.52 ng/ml



#2 Decachlorobiphenyl
 R.T.: 10.270 min
 Delta R.T.: 0.000 min
 Response: 96233293
 Conc: 74.70 ng/ml



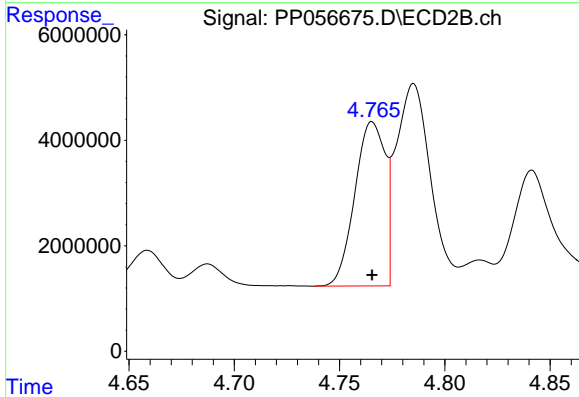
#2 Decachlorobiphenyl
 R.T.: 8.749 min
 Delta R.T.: 0.000 min
 Response: 112727156
 Conc: 74.67 ng/ml



#16 AR-1242-1

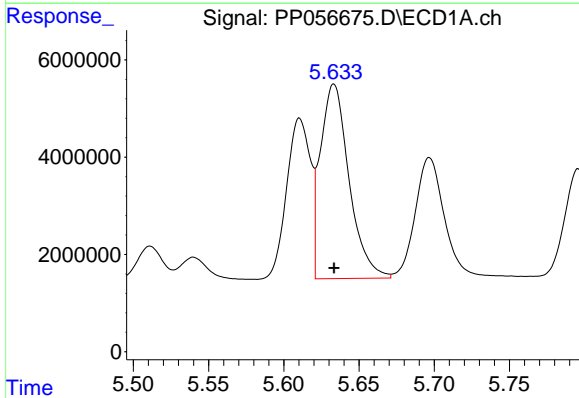
R.T.: 5.611 min
 Delta R.T.: 0.000 min
 Response: 36425893
 Conc: 749.84 ng/ml

Instrument :
 ECD_P
 ClientSampleId :
 AR1242ICC750



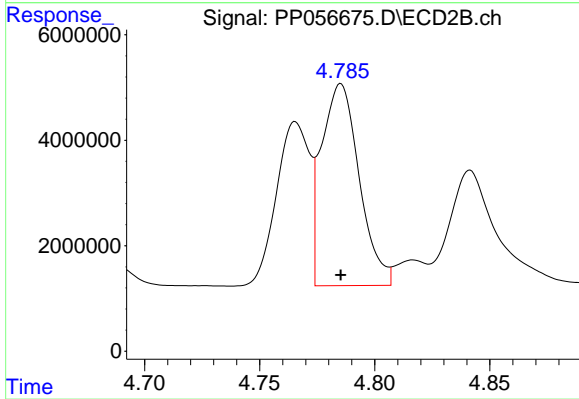
#16 AR-1242-1

R.T.: 4.766 min
 Delta R.T.: 0.000 min
 Response: 31142238
 Conc: 742.63 ng/ml



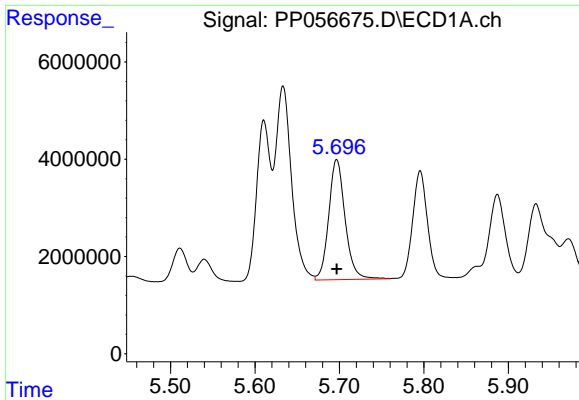
#17 AR-1242-2

R.T.: 5.633 min
 Delta R.T.: 0.000 min
 Response: 53079631
 Conc: 744.94 ng/ml



#17 AR-1242-2

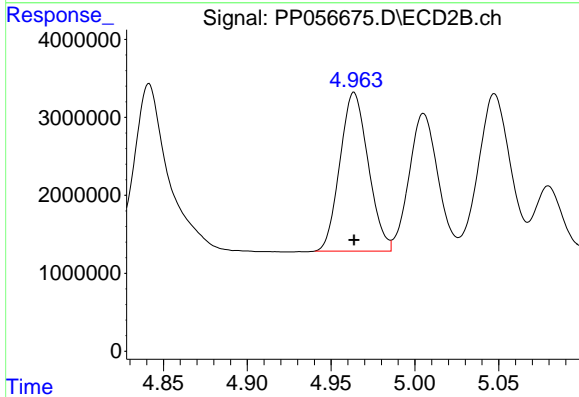
R.T.: 4.785 min
 Delta R.T.: 0.000 min
 Response: 43755902
 Conc: 746.77 ng/ml



#18 AR-1242-3

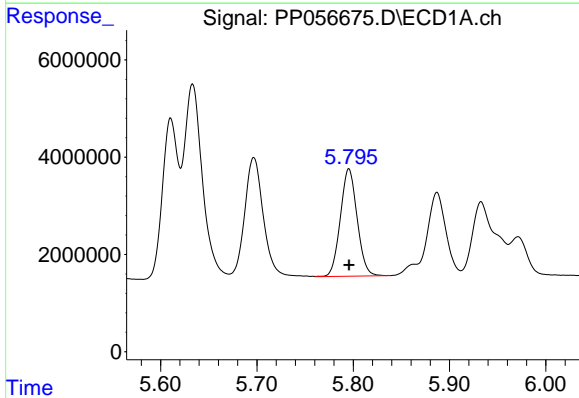
R.T.: 5.697 min
 Delta R.T.: 0.000 min
 Response: 33408008
 Conc: 749.36 ng/ml

Instrument :
 ECD_P
 ClientSampleId :
 AR1242ICC750



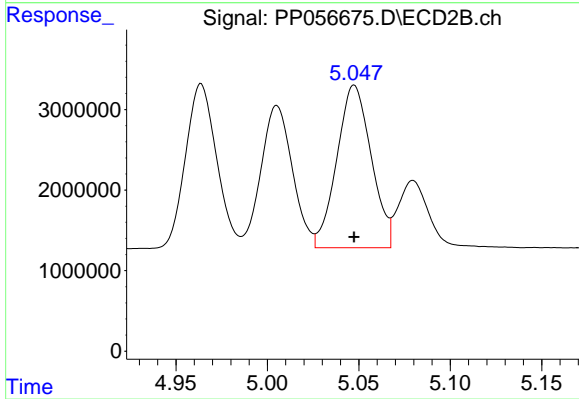
#18 AR-1242-3

R.T.: 4.964 min
 Delta R.T.: 0.000 min
 Response: 23918554
 Conc: 744.89 ng/ml



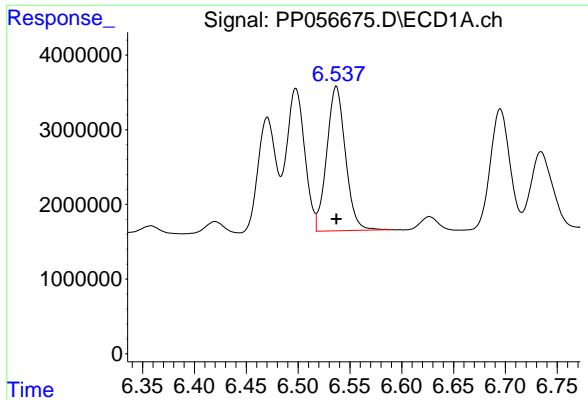
#19 AR-1242-4

R.T.: 5.796 min
 Delta R.T.: 0.000 min
 Response: 26619010
 Conc: 750.41 ng/ml



#19 AR-1242-4

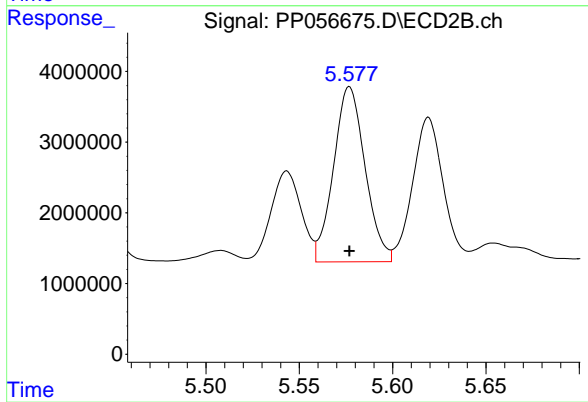
R.T.: 5.047 min
 Delta R.T.: 0.000 min
 Response: 26432252
 Conc: 744.39 ng/ml



#20 AR-1242-5

R.T.: 6.537 min
 Delta R.T.: 0.000 min
 Response: 24232481
 Conc: 745.10 ng/ml

Instrument :
 ECD_P
 ClientSampleId :
 AR1242ICC750



#20 AR-1242-5

R.T.: 5.577 min
 Delta R.T.: 0.000 min
 Response: 29126673
 Conc: 745.95 ng/ml