

Data Path : Z:\pestpcbsrv\HPCHEM1\ECD_P\Data\PP040721\
 Data File : PP034720.D
 Signal(s) : Signal #1: ECD1A.CH Signal #2: ECD2B.CH
 Acq On : 07 Apr 2021 14:30
 Operator : DD\AJ
 Sample : M1956-01
 Misc :
 ALS Vial : 11 Sample Multiplier: 1

Instrument :
 ECD_P
ClientSampleId :
 OIL-1-2-3-4-5

Manual Integrations
APPROVED
 Ankita
 4/8/2021 3:06:38 PM

Integration File signal 1: autoint1.e
 Integration File signal 2: autoint2.e
 Quant Time: Apr 08 01:51:54 2021
 Quant Method : Z:\pestpcbsrv\HPCHEM1\ECD_P\methods\PP033021.M
 Quant Title : GC EXTRACTABLES
 QLast Update : Wed Mar 31 06:02:19 2021
 Response via : Initial Calibration
 Integrator: ChemStation 6890 Scale Mode: Small noise peaks clipped

Volume Inj. : 2 µl
 Signal #1 Phase : ZB-MR1 Signal #2 Phase: ZB-MR2
 Signal #1 Info : 30Mx0.32mmx 0.50µ Signal #2 Info : 30M x 0.32mm x 0.25µm

Compound	RT#1	RT#2	Resp#1	Resp#2	ng/ml	ng/ml

System Monitoring Compounds						
1) SA Tetrachlo...	4.854	4.273	1799682	967034	23.592	21.527m
2) SA Decachlor...	10.763	9.556	1972105	761214	25.618	26.959

Target Compounds

 (f)=RT Delta > 1/2 Window (#)=Amounts differ by > 25% (m)=manual int.

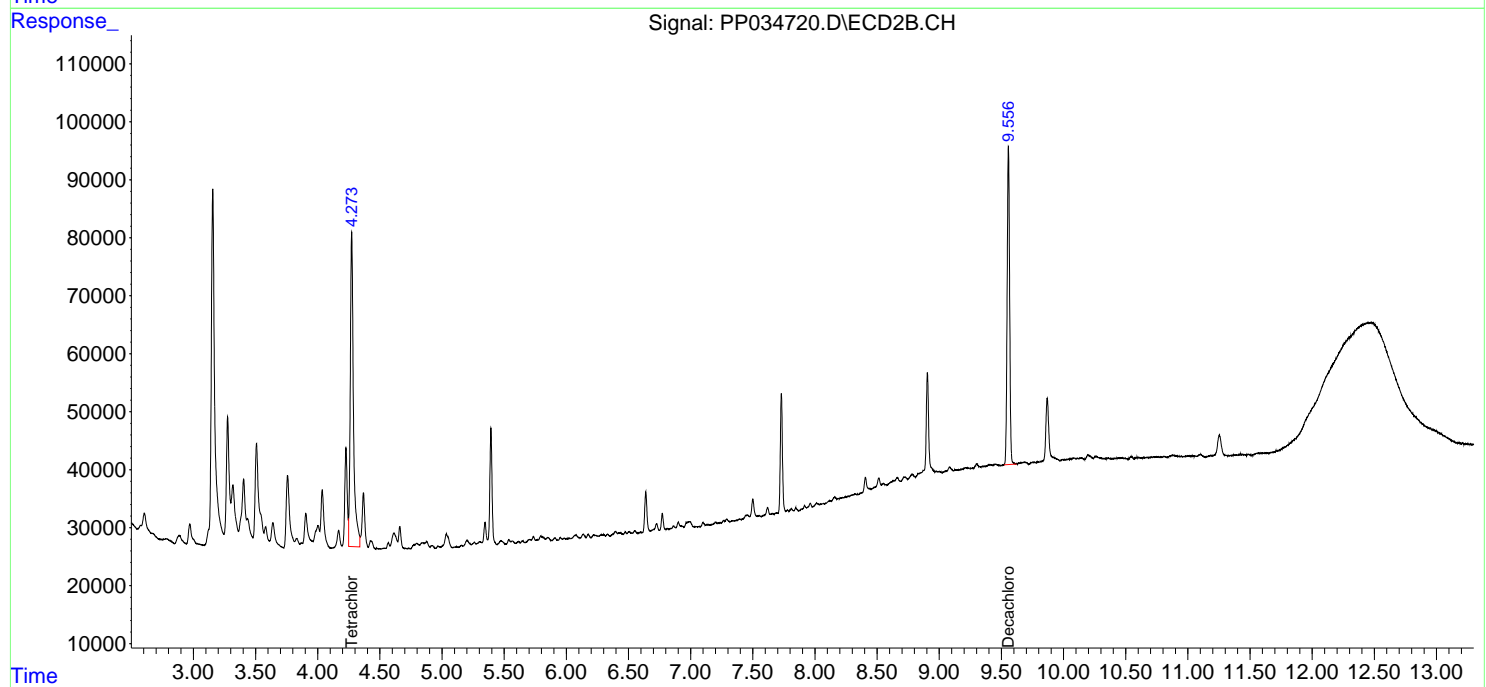
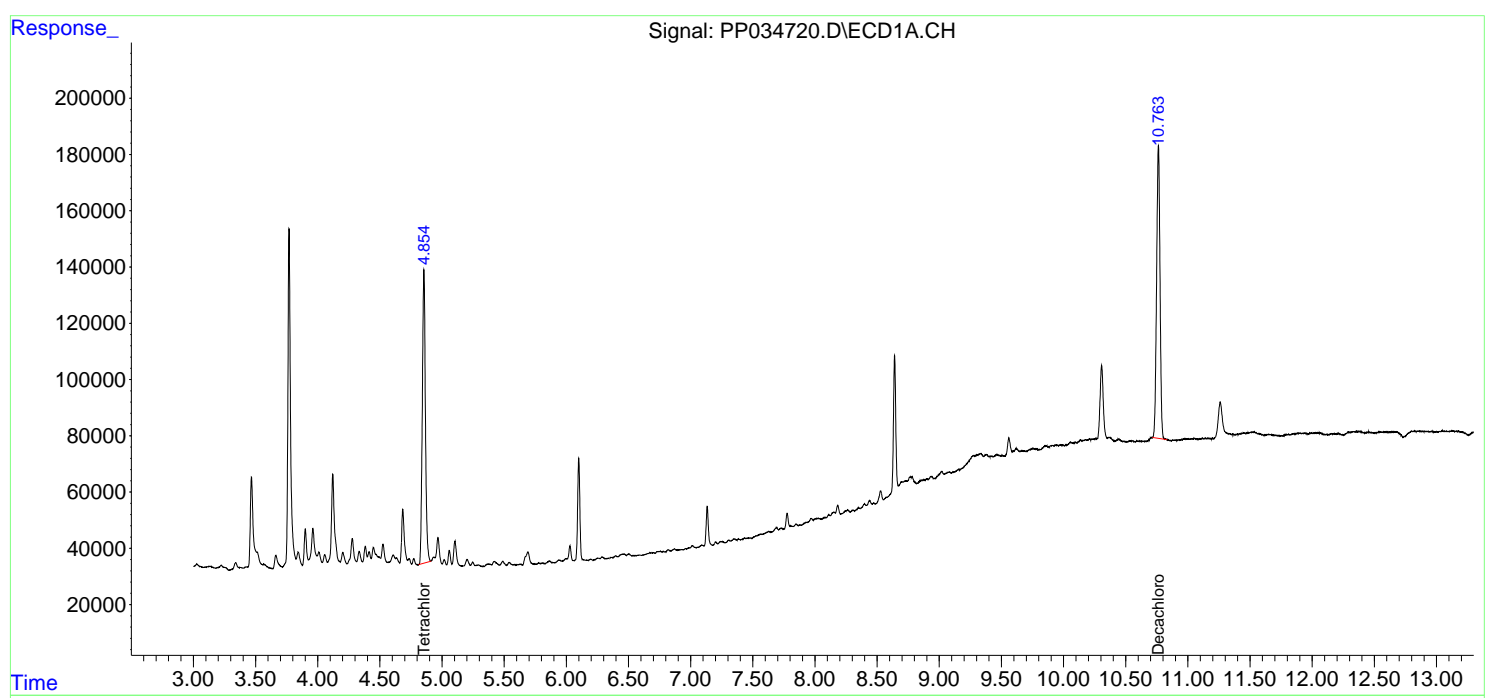
Data Path : Z:\pestpcbsrv\HPCHEM1\ECD_P\Data\PP040721\
 Data File : PP034720.D
 Signal(s) : Signal #1: ECD1A.CH Signal #2: ECD2B.CH
 Acq On : 07 Apr 2021 14:30
 Operator : DD\AJ
 Sample : M1956-01
 Misc :
 ALS Vial : 11 Sample Multiplier: 1

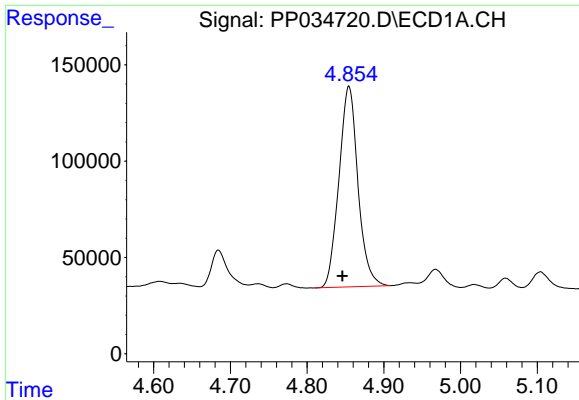
Instrument :
 ECD_P
Client Sampled :
 OIL-1-2-3-4-5

Manual Integrations
APPROVED
 Ankita
 4/8/2021 3:06:38 PM

Integration File signal 1: autoint1.e
 Integration File signal 2: autoint2.e
 Quant Time: Apr 08 01:51:54 2021
 Quant Method : Z:\pestpcbsrv\HPCHEM1\ECD_P\methods\PP033021.M
 Quant Title : GC EXTRACTABLES
 QLast Update : Wed Mar 31 06:02:19 2021
 Response via : Initial Calibration
 Integrator: ChemStation 6890 Scale Mode: Small noise peaks clipped

Volume Inj. : 2 µl
 Signal #1 Phase : ZB-MR1 Signal #2 Phase: ZB-MR2
 Signal #1 Info : 30Mx0.32mmx 0.50µ Signal #2 Info : 30M x 0.32mm x 0.25µm

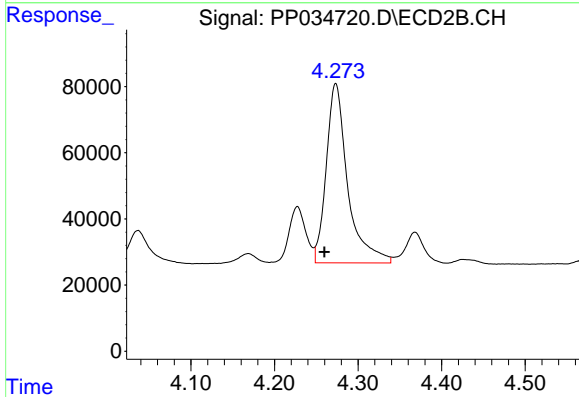




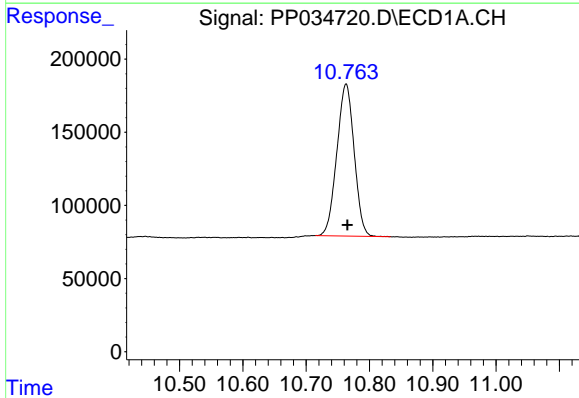
#1 Tetrachloro-m-xylene
 R.T.: 4.854 min
 Delta R.T.: 0.008 min
 Response: 1799682
 Conc: 23.59 ng/ml

Instrument :
 ECD_P
 ClientSampled :
 OIL-1-2-3-4-5

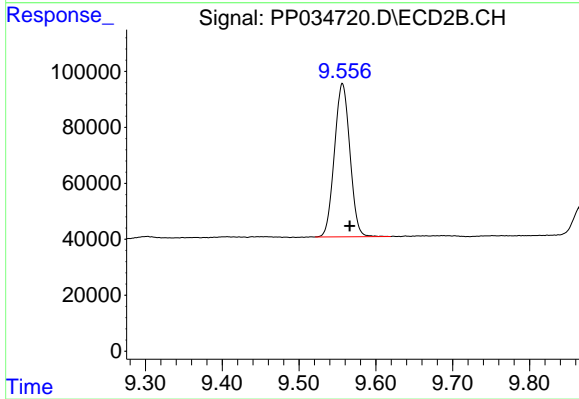
Manual Integrations
 APPROVED
 Ankita
 4/8/2021 3:06:38 PM



#1 Tetrachloro-m-xylene
 R.T.: 4.273 min
 Delta R.T.: 0.013 min
 Response: 967034
 Conc: 21.53 ng/ml m



#2 Decachlorobiphenyl
 R.T.: 10.763 min
 Delta R.T.: -0.002 min
 Response: 1972105
 Conc: 25.62 ng/ml



#2 Decachlorobiphenyl
 R.T.: 9.556 min
 Delta R.T.: -0.010 min
 Response: 761214
 Conc: 26.96 ng/ml