

Data Path : Z:\pestpcbsrv\HPCHEM1\ECD_P\Data\PP040723\
 Data File : PP056710.D
 Signal(s) : Signal #1: ECD1A.ch Signal #2: ECD2B.ch
 Acq On : 07 Apr 2023 11:21
 Operator : YP\AJ
 Sample : AR1242CCC500
 Misc :
 ALS Vial : 4 Sample Multiplier: 1

Instrument :
 ECD_P
 ClientSampleId :

Integration File signal 1: autoint1.e
 Integration File signal 2: autoint2.e
 Quant Time: Apr 07 22:16:52 2023
 Quant Method : Z:\pestpcbsrv\HPCHEM1\ECD_P\methods\PP040623.M
 Quant Title : GC EXTRACTABLES
 QLast Update : Fri Apr 07 04:14:17 2023
 Response via : Initial Calibration
 Integrator: ChemStation

Volume Inj. : 2 µl
 Signal #1 Phase : ZB-MR1 Signal #2 Phase: ZB-MR2
 Signal #1 Info : 30Mx0.32mmx 0.50µ Signal #2 Info : 30M x 0.32mm x 0.25µm

Compound	RT#1	RT#2	Resp#1	Resp#2	ng/ml	ng/ml

System Monitoring Compounds						
1) SA Tetrachlo...	4.433	3.661	105.4E6	86430424	49.050	49.696
2) SA Decachlor...	10.269	8.746	66282909	74288291	50.640	47.248
Target Compounds						
3) L1 AR-1016-1	5.608	4.762	23903129	21486931	389.311	403.431
4) L1 AR-1016-2	5.630	4.781	35045343	30491201	392.994	411.192
5) L1 AR-1016-3	5.694	4.960	21702099	16645518	382.793	413.622
6) L1 AR-1016-4	5.793	5.001	16911280	14492772	377.655	399.962
7) L1 AR-1016-5	6.090	5.218	18615026	19009277	397.018	404.791
8) L2 AR-1221-1	4.637	3.876	3287156	2672332	124.623	122.023
9) L2 AR-1221-2	4.729	3.964	4716600	4013084	242.797	244.255
10) L2 AR-1221-3	4.805	4.042	15976326	14338643	280.417	292.420
11) L3 AR-1232-1	4.805	4.042	15976326	14338643	331.704	348.540
12) L3 AR-1232-2	5.339	4.781	20344094	30491201	814.424	889.671
13) L3 AR-1232-3	5.630	4.960	35045343	16645518	869.230	904.613
14) L3 AR-1232-4	5.793	5.044	16911280	18181570	839.313	948.789
15) L3 AR-1232-5	5.884	5.218	14992525	19009277	852.981	894.285
16) L4 AR-1242-1	5.608	4.762	23903129	21486931	475.328	499.573
17) L4 AR-1242-2	5.630	4.781	35045343	30491201	481.256	512.437
18) L4 AR-1242-3	5.694	4.960	21702099	16645518	473.652	515.931
19) L4 AR-1242-4	5.793	5.044	16911280	18181570	468.679	499.008
20) L4 AR-1242-5	6.534	5.573	15843716	19716482	477.310	494.493
21) L5 AR-1248-1	5.608	4.762	23903129	21486931	637.090	652.750
22) L5 AR-1248-2	5.884	5.001	14992525	14492772	254.567	281.181
23) L5 AR-1248-3	6.090	5.044	18615026	18181570	292.175	338.693
24) L5 AR-1248-4	6.496	5.218	15184757	19009277	261.469	307.220
25) L5 AR-1248-5	6.534	5.615	15843716	15920199	280.486	310.070
26) L6 AR-1254-1	6.468	5.573	11968888	19716482	168.800	214.036 #
27) L6 AR-1254-2	6.693	5.723	13799869	5678366	136.081	70.653 #
28) L6 AR-1254-3	7.058	6.132	5833621	6796927	60.183	54.984
29) L6 AR-1254-4	7.345	6.362	3827315	4622933	62.707	72.737
30) L6 AR-1254-5	7.767	6.785	1314401	3010592	19.289	28.635 #
31) L7 AR-1260-1	7.224	6.279	661695	2475039	8.129	25.878 #
32) L7 AR-1260-2	7.482	6.453	1289939	769982	15.119	7.455 #
33) L7 AR-1260-3	7.826f	6.609	274432	1111471	3.930	10.718 #
34) L7 AR-1260-4	8.056f	7.086	1753748	78391	22.985	0.918 #
35) L7 AR-1260-5	8.394	7.332	190297	36586	1.503	0.231 #
36) L8 AR-1262-1	7.826f	6.887	274432	166392	3.116	3.556
37) L8 AR-1262-2	8.394	7.086	190297	78391	1.470	0.801 #
38) L8 AR-1262-3	8.696f	7.619	22376	47050	0.243	0.708 #
39) L8 AR-1262-4	8.811	7.682	126009	161613	2.775	1.371 #
40) L8 AR-1262-5	9.485	8.168	37309	26338	0.929	0.540 #
41) L9 AR-1268-1	8.696f	7.619	22376	47050	0.120	0.212 #

Data Path : Z:\pestpcbsrv\HPCHEM1\ECD_P\Data\PP040723\
 Data File : PP056710.D
 Signal(s) : Signal #1: ECD1A.ch Signal #2: ECD2B.ch
 Acq On : 07 Apr 2023 11:21
 Operator : YP\AJ
 Sample : AR1242CCC500
 Misc :
 ALS Vial : 4 Sample Multiplier: 1

Instrument :
 ECD_P
 ClientSampleId :

Integration File signal 1: autoint1.e
 Integration File signal 2: autoint2.e
 Quant Time: Apr 07 22:16:52 2023
 Quant Method : Z:\pestpcbsrv\HPCHEM1\ECD_P\methods\PP040623.M
 Quant Title : GC EXTRACTABLES
 QLast Update : Fri Apr 07 04:14:17 2023
 Response via : Initial Calibration
 Integrator: ChemStation

Volume Inj. : 2 µl
 Signal #1 Phase : ZB-MR1 Signal #2 Phase: ZB-MR2
 Signal #1 Info : 30Mx0.32mmx 0.50µ Signal #2 Info : 30M x 0.32mm x 0.25µm

	Compound	RT#1	RT#2	Resp#1	Resp#2	ng/ml	ng/ml
42)	L9 AR-1268-2	8.811	7.682	126009	161613	0.759	0.832
43)	L9 AR-1268-3	9.043	7.890	77952	132324	0.490	0.668 #
44)	L9 AR-1268-4	9.485	8.168	37309	26338	0.804	0.455 #
45)	L9 AR-1268-5	9.916	8.483	358430	588977	0.835	1.160 #

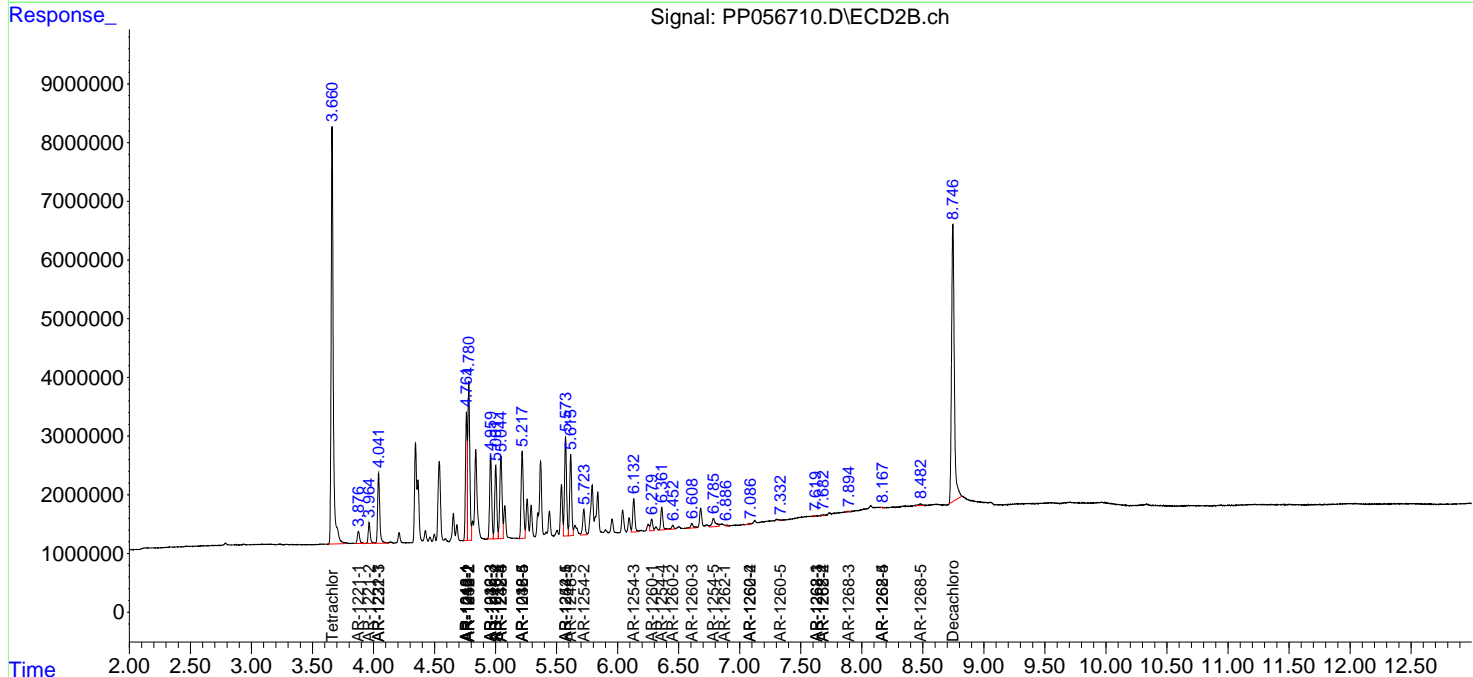
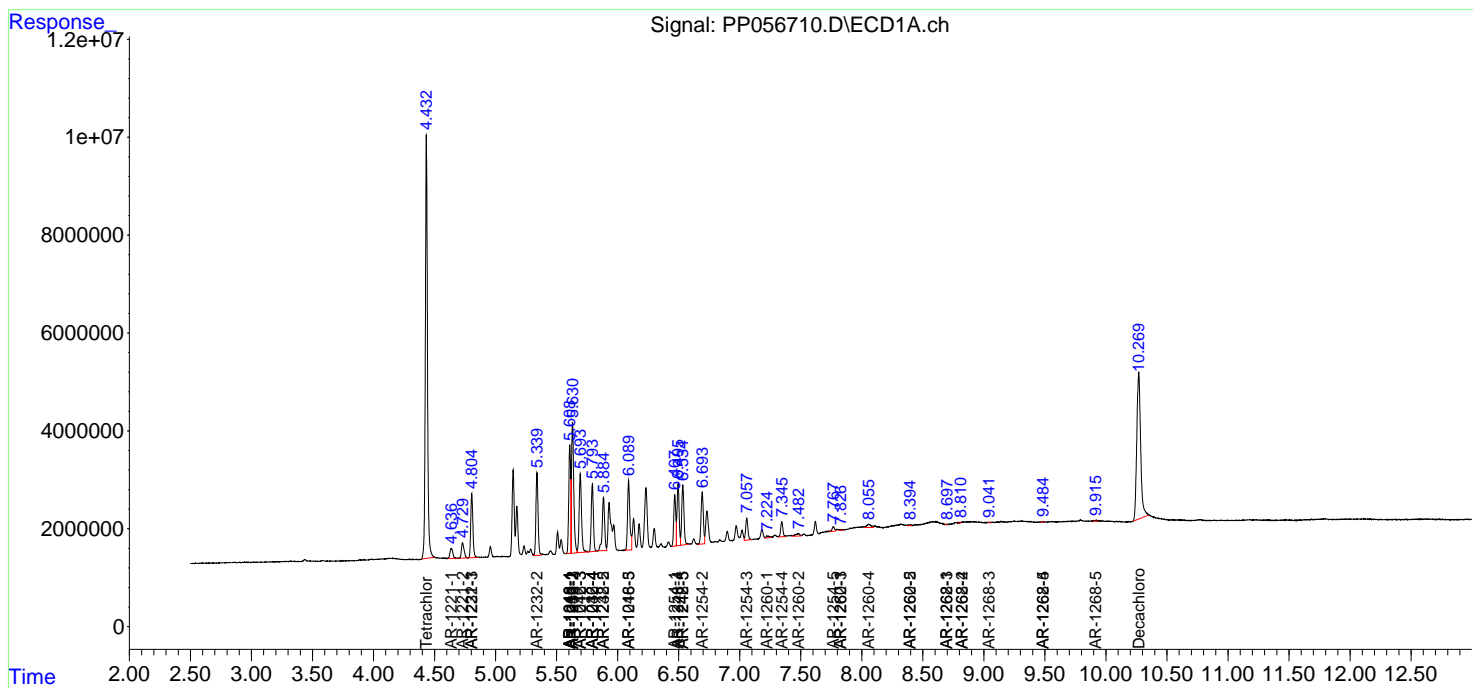
(f)=RT Delta > 1/2 Window (#)=Amounts differ by > 25% (m)=manual int.

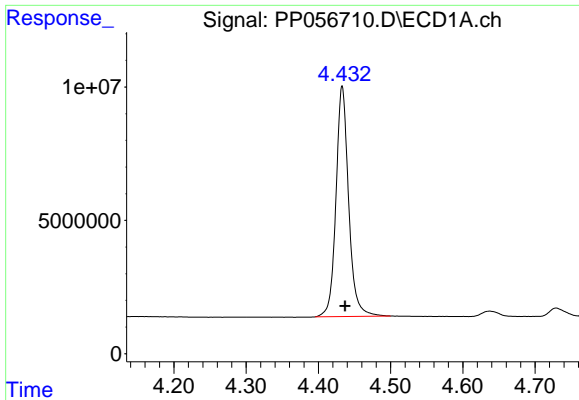
Data Path : Z:\pestpcbsrv\HPCHEM1\ECD_P\Data\PP040723\
 Data File : PP056710.D
 Signal(s) : Signal #1: ECD1A.ch Signal #2: ECD2B.ch
 Acq On : 07 Apr 2023 11:21
 Operator : YP\AJ
 Sample : AR1242CCC500
 Misc :
 ALS Vial : 4 Sample Multiplier: 1

Instrument :
 ECD_P
 ClientSampleId :

Integration File signal 1: autoint1.e
 Integration File signal 2: autoint2.e
 Quant Time: Apr 07 22:16:52 2023
 Quant Method : Z:\pestpcbsrv\HPCHEM1\ECD_P\methods\PP040623.M
 Quant Title : GC EXTRACTABLES
 QLast Update : Fri Apr 07 04:14:17 2023
 Response via : Initial Calibration
 Integrator: ChemStation

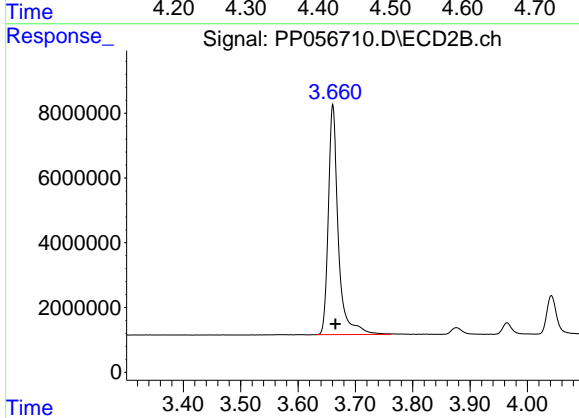
Volume Inj. : 2 µl
 Signal #1 Phase : ZB-MR1 Signal #2 Phase: ZB-MR2
 Signal #1 Info : 30Mx0.32mmx 0.50µ Signal #2 Info : 30M x 0.32mm x 0.25µm



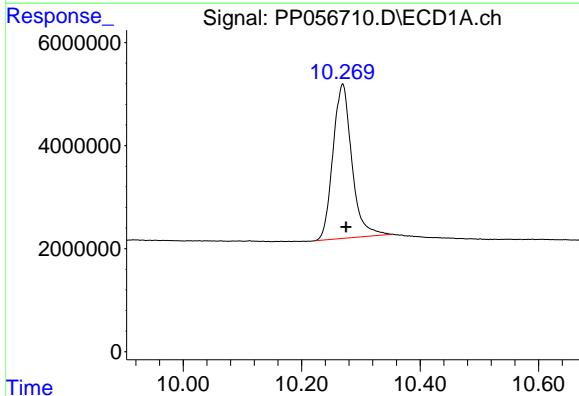


#1 Tetrachloro-m-xylene
 R.T.: 4.433 min
 Delta R.T.: -0.004 min
 Response: 105383799
 Conc: 49.05 ng/ml

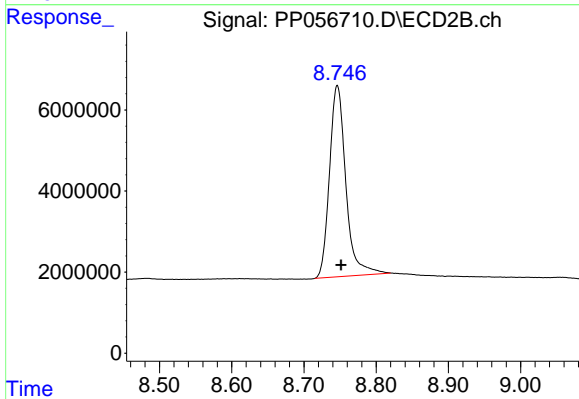
Instrument :
 ECD_P
 ClientSampleId :



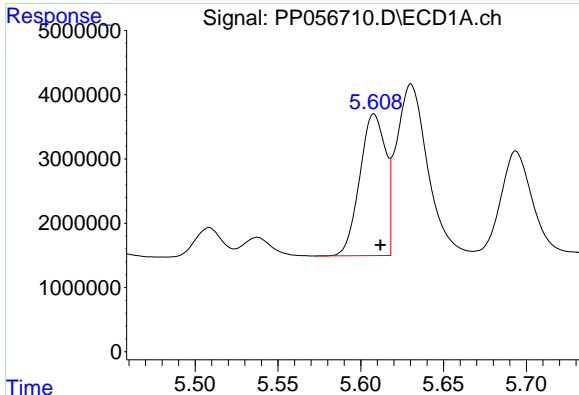
#1 Tetrachloro-m-xylene
 R.T.: 3.661 min
 Delta R.T.: -0.004 min
 Response: 86430424
 Conc: 49.70 ng/ml



#2 Decachlorobiphenyl
 R.T.: 10.269 min
 Delta R.T.: -0.006 min
 Response: 66282909
 Conc: 50.64 ng/ml



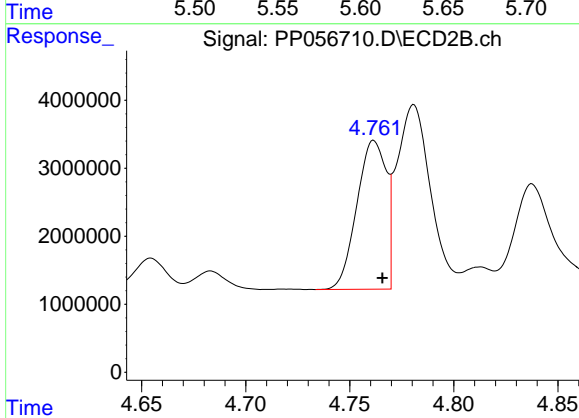
#2 Decachlorobiphenyl
 R.T.: 8.746 min
 Delta R.T.: -0.005 min
 Response: 74288291
 Conc: 47.25 ng/ml



#3 AR-1016-1

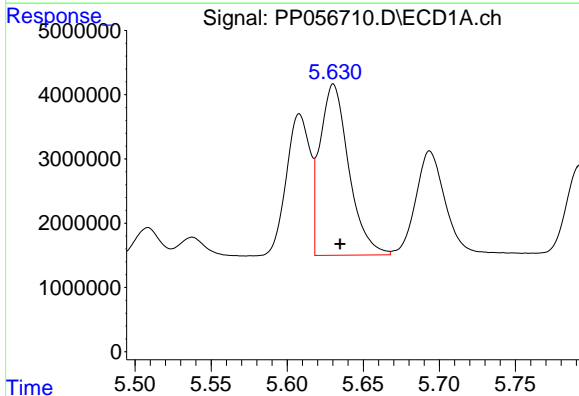
R.T.: 5.608 min
 Delta R.T.: -0.004 min
 Response: 23903129
 Conc: 389.31 ng/ml

Instrument :
 ECD_P
 ClientSampleId :



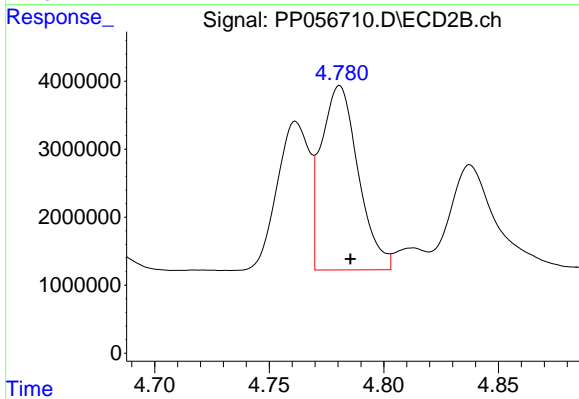
#3 AR-1016-1

R.T.: 4.762 min
 Delta R.T.: -0.004 min
 Response: 21486931
 Conc: 403.43 ng/ml



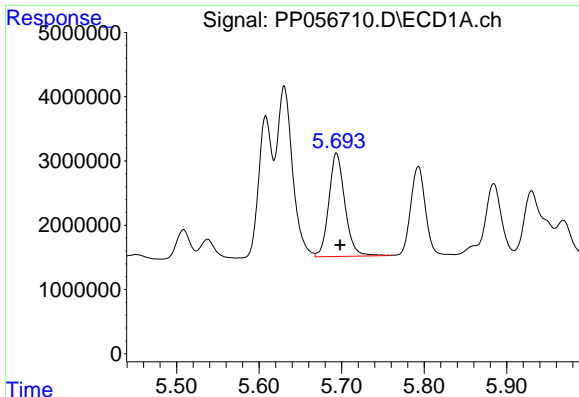
#4 AR-1016-2

R.T.: 5.630 min
 Delta R.T.: -0.004 min
 Response: 35045343
 Conc: 392.99 ng/ml



#4 AR-1016-2

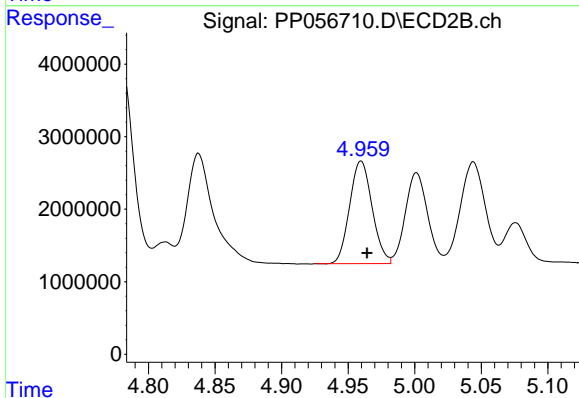
R.T.: 4.781 min
 Delta R.T.: -0.005 min
 Response: 30491201
 Conc: 411.19 ng/ml



#5 AR-1016-3

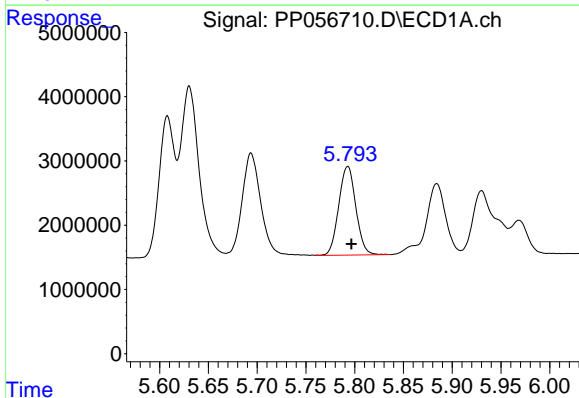
R.T.: 5.694 min
 Delta R.T.: -0.004 min
 Response: 21702099
 Conc: 382.79 ng/ml

Instrument :
 ECD_P
 ClientSampleId :



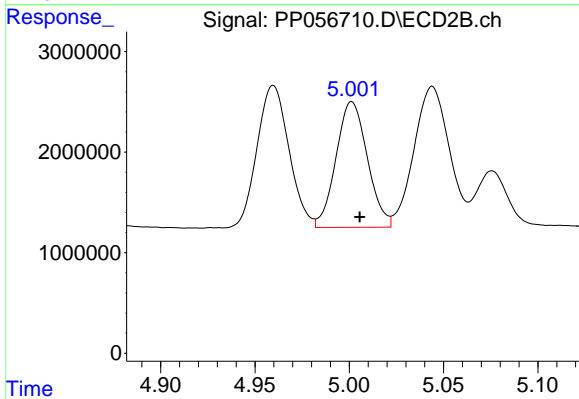
#5 AR-1016-3

R.T.: 4.960 min
 Delta R.T.: -0.004 min
 Response: 16645518
 Conc: 413.62 ng/ml



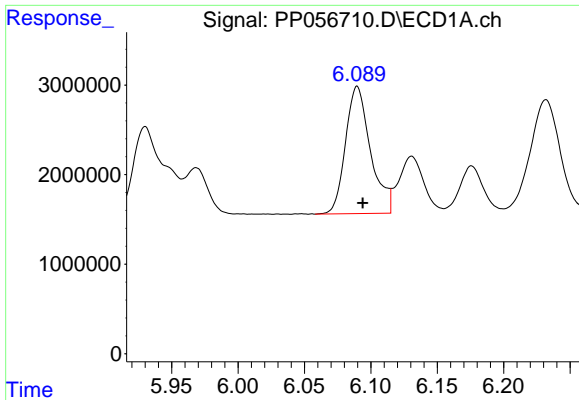
#6 AR-1016-4

R.T.: 5.793 min
 Delta R.T.: -0.004 min
 Response: 16911280
 Conc: 377.65 ng/ml



#6 AR-1016-4

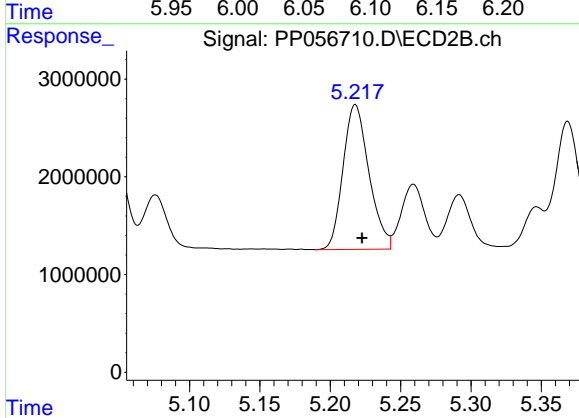
R.T.: 5.001 min
 Delta R.T.: -0.004 min
 Response: 14492772
 Conc: 399.96 ng/ml



#7 AR-1016-5

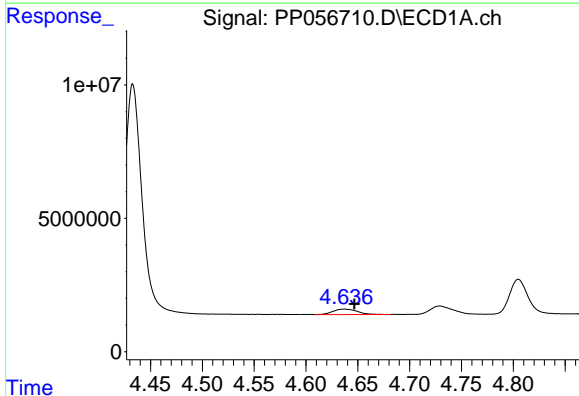
R.T.: 6.090 min
 Delta R.T.: -0.004 min
 Response: 18615026
 Conc: 397.02 ng/ml

Instrument :
 ECD_P
 ClientSampleId :



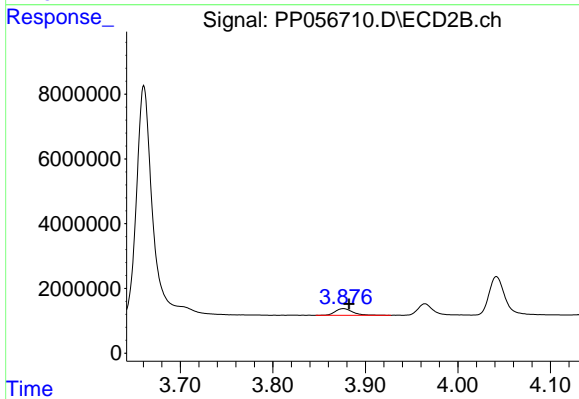
#7 AR-1016-5

R.T.: 5.218 min
 Delta R.T.: -0.005 min
 Response: 19009277
 Conc: 404.79 ng/ml



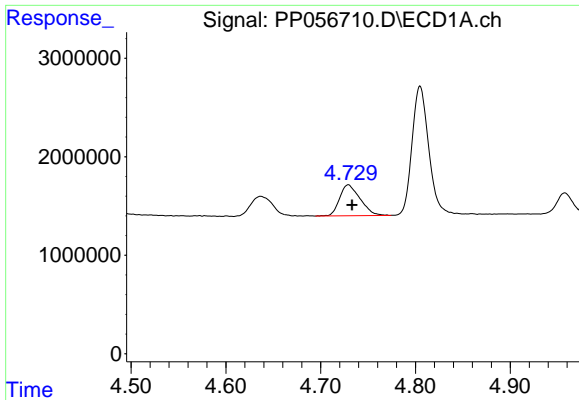
#8 AR-1221-1

R.T.: 4.637 min
 Delta R.T.: -0.010 min
 Response: 3287156
 Conc: 124.62 ng/ml



#8 AR-1221-1

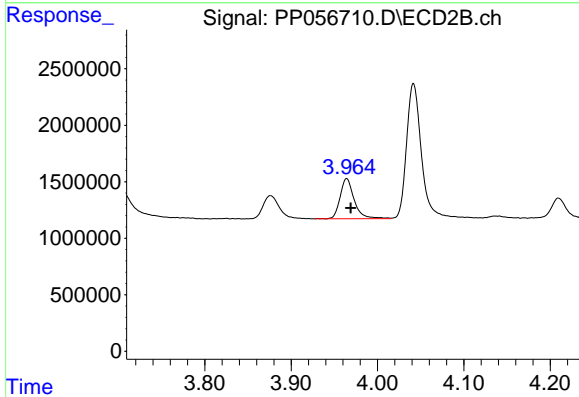
R.T.: 3.876 min
 Delta R.T.: -0.006 min
 Response: 2672332
 Conc: 122.02 ng/ml



#9 AR-1221-2

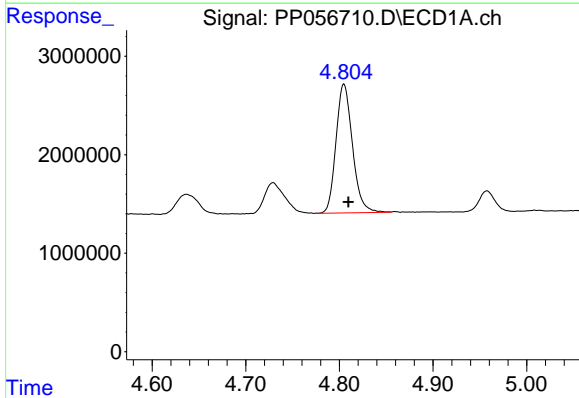
R.T.: 4.729 min
Delta R.T.: -0.004 min
Response: 4716600
Conc: 242.80 ng/ml

Instrument :
ECD_P
ClientSampleId :



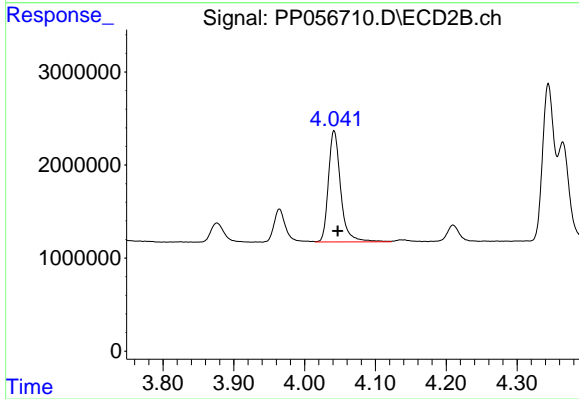
#9 AR-1221-2

R.T.: 3.964 min
Delta R.T.: -0.005 min
Response: 4013084
Conc: 244.26 ng/ml



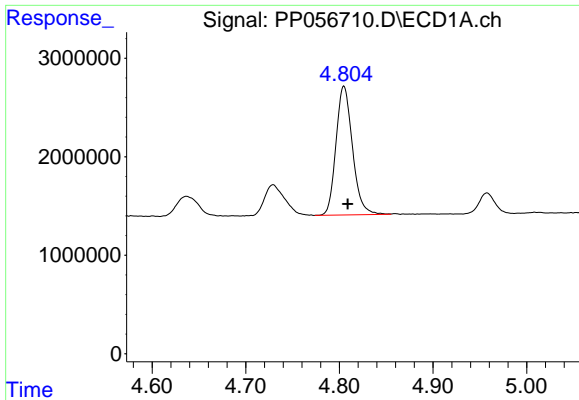
#10 AR-1221-3

R.T.: 4.805 min
Delta R.T.: -0.005 min
Response: 15976326
Conc: 280.42 ng/ml



#10 AR-1221-3

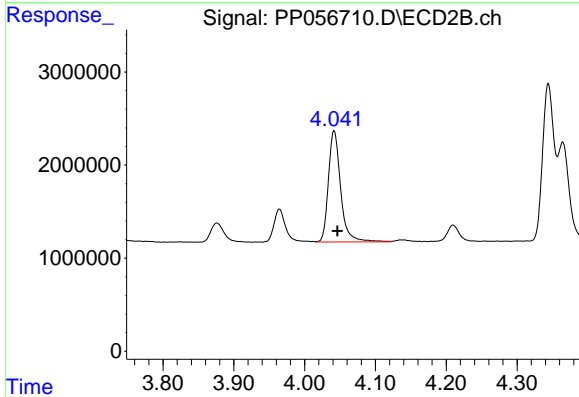
R.T.: 4.042 min
Delta R.T.: -0.005 min
Response: 14338643
Conc: 292.42 ng/ml



#11 AR-1232-1

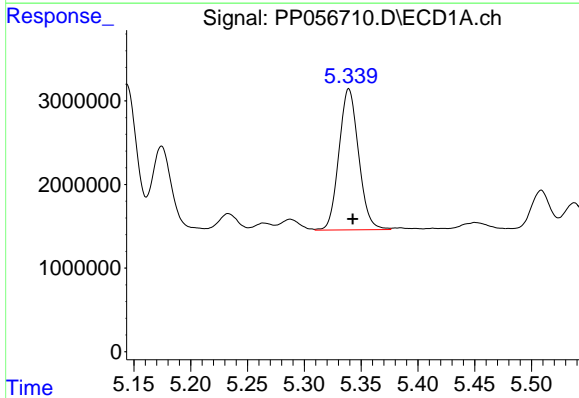
R.T.: 4.805 min
 Delta R.T.: -0.004 min
 Response: 15976326
 Conc: 331.70 ng/ml

Instrument :
 ECD_P
 ClientSampleId :



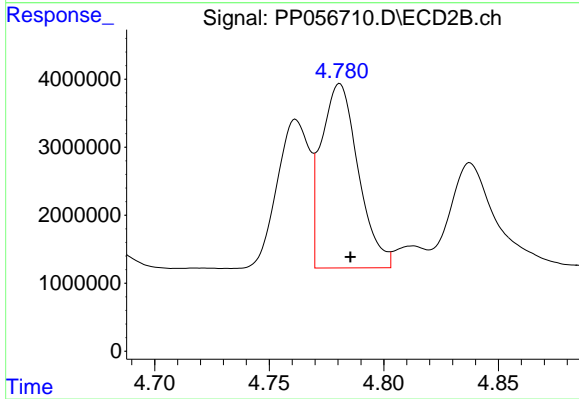
#11 AR-1232-1

R.T.: 4.042 min
 Delta R.T.: -0.005 min
 Response: 14338643
 Conc: 348.54 ng/ml



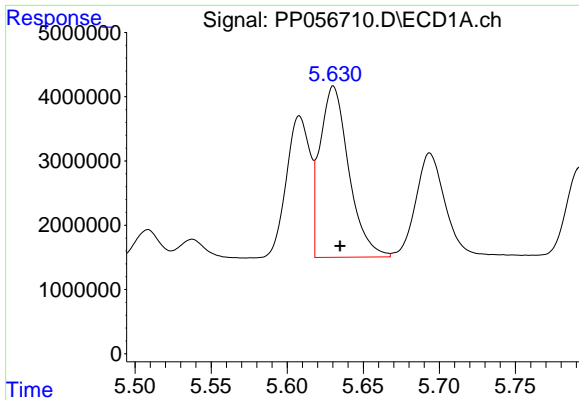
#12 AR-1232-2

R.T.: 5.339 min
 Delta R.T.: -0.003 min
 Response: 20344094
 Conc: 814.42 ng/ml



#12 AR-1232-2

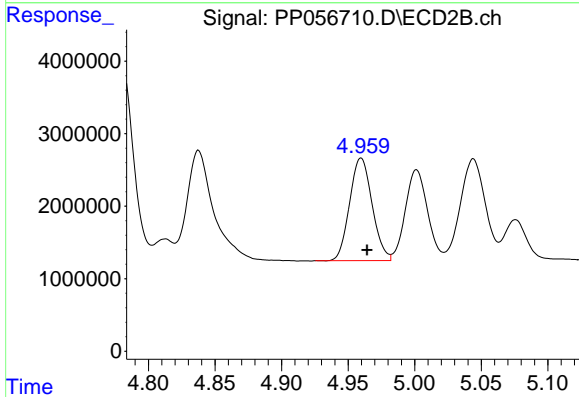
R.T.: 4.781 min
 Delta R.T.: -0.005 min
 Response: 30491201
 Conc: 889.67 ng/ml



#13 AR-1232-3

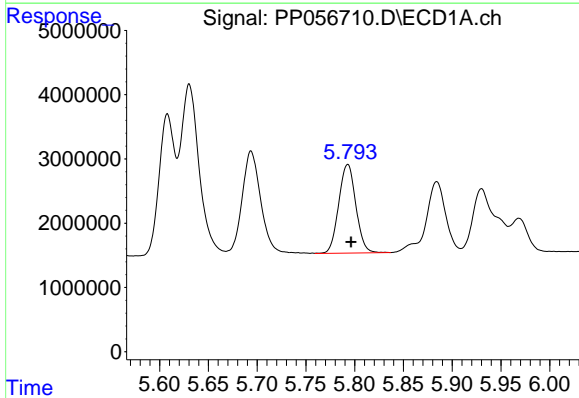
R.T.: 5.630 min
 Delta R.T.: -0.004 min
 Response: 35045343
 Conc: 869.23 ng/ml

Instrument :
 ECD_P
 ClientSampleId :



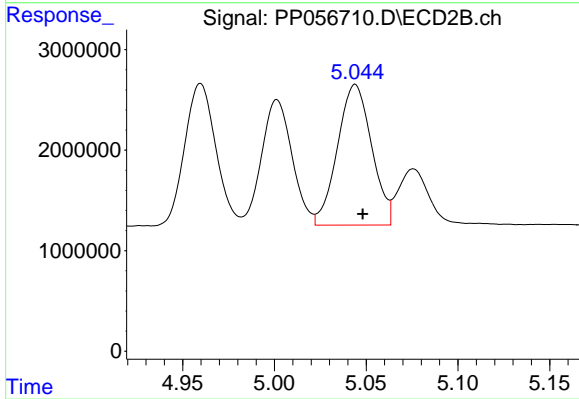
#13 AR-1232-3

R.T.: 4.960 min
 Delta R.T.: -0.005 min
 Response: 16645518
 Conc: 904.61 ng/ml



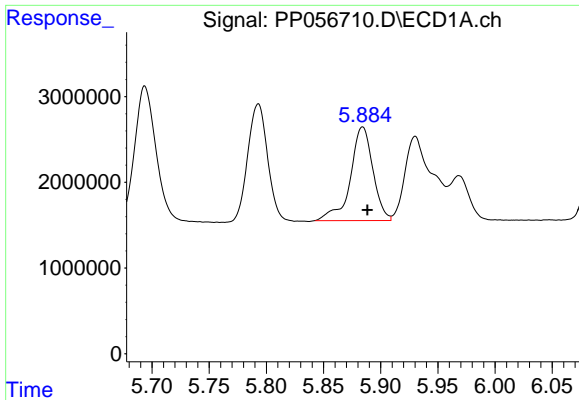
#14 AR-1232-4

R.T.: 5.793 min
 Delta R.T.: -0.003 min
 Response: 16911280
 Conc: 839.31 ng/ml



#14 AR-1232-4

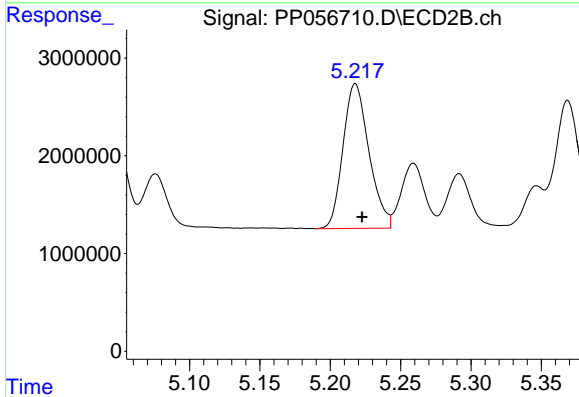
R.T.: 5.044 min
 Delta R.T.: -0.004 min
 Response: 18181570
 Conc: 948.79 ng/ml



#15 AR-1232-5

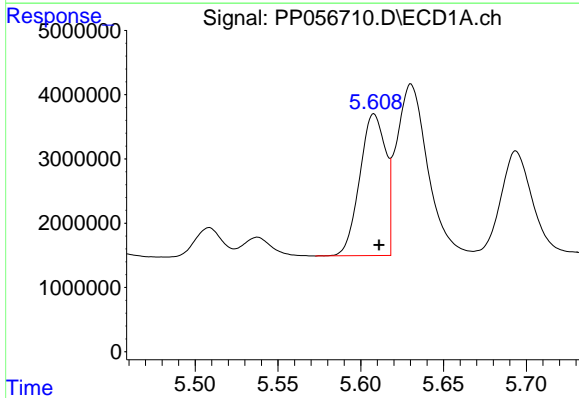
R.T.: 5.884 min
 Delta R.T.: -0.004 min
 Response: 14992525
 Conc: 852.98 ng/ml

Instrument :
 ECD_P
 ClientSampleId :



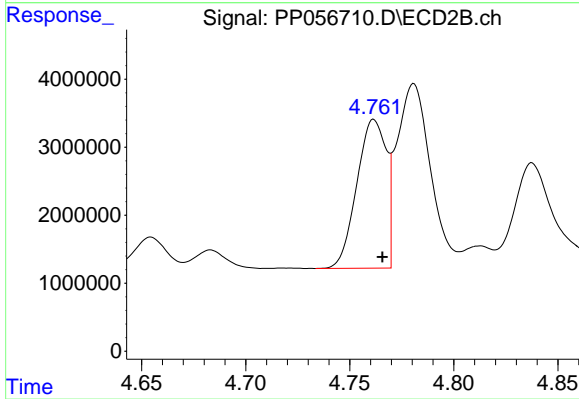
#15 AR-1232-5

R.T.: 5.218 min
 Delta R.T.: -0.005 min
 Response: 19009277
 Conc: 894.29 ng/ml



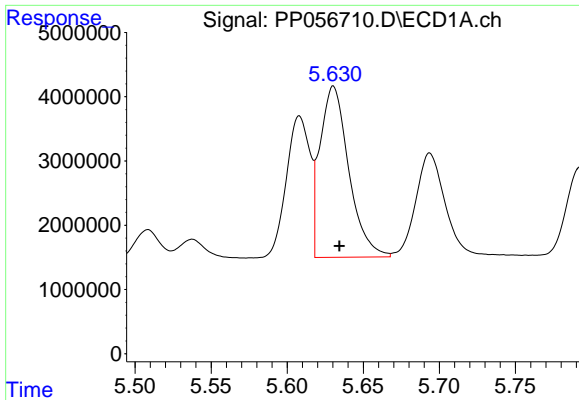
#16 AR-1242-1

R.T.: 5.608 min
 Delta R.T.: -0.003 min
 Response: 23903129
 Conc: 475.33 ng/ml



#16 AR-1242-1

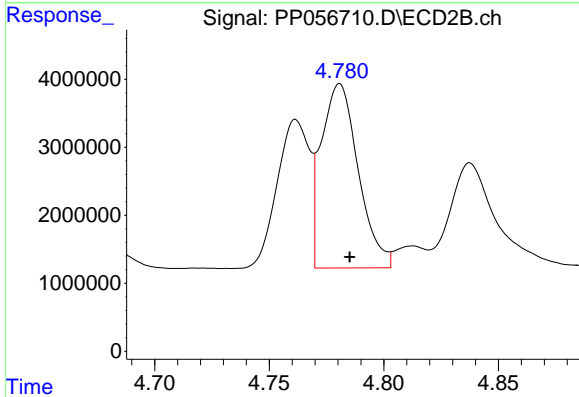
R.T.: 4.762 min
 Delta R.T.: -0.004 min
 Response: 21486931
 Conc: 499.57 ng/ml



#17 AR-1242-2

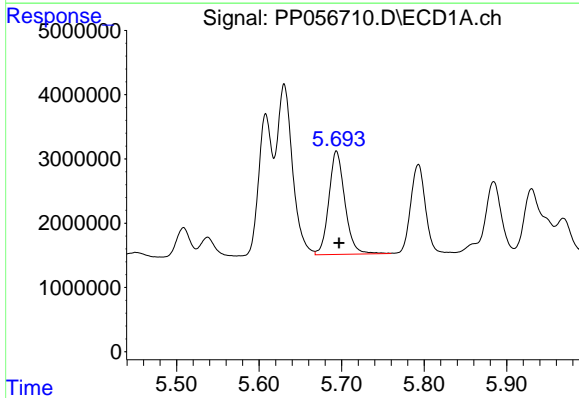
R.T.: 5.630 min
 Delta R.T.: -0.004 min
 Response: 35045343
 Conc: 481.26 ng/ml

Instrument :
 ECD_P
 ClientSampleId :



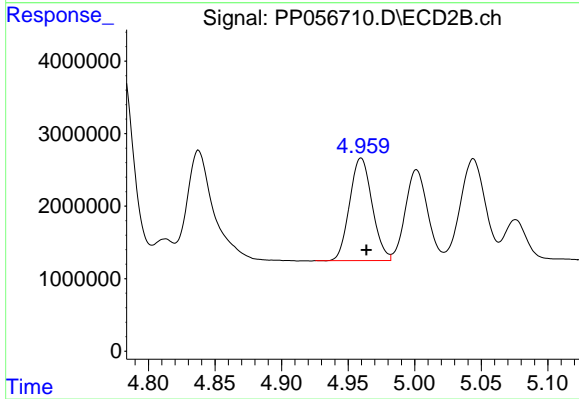
#17 AR-1242-2

R.T.: 4.781 min
 Delta R.T.: -0.004 min
 Response: 30491201
 Conc: 512.44 ng/ml



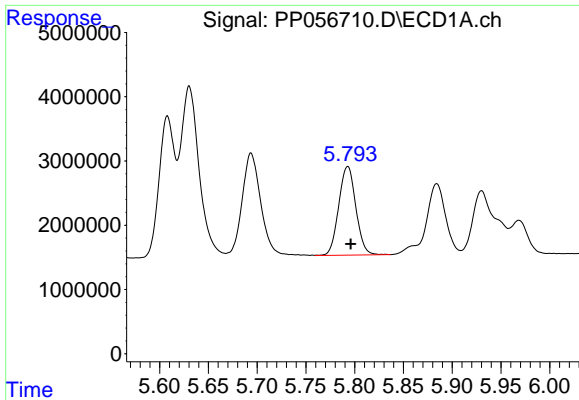
#18 AR-1242-3

R.T.: 5.694 min
 Delta R.T.: -0.003 min
 Response: 21702099
 Conc: 473.65 ng/ml



#18 AR-1242-3

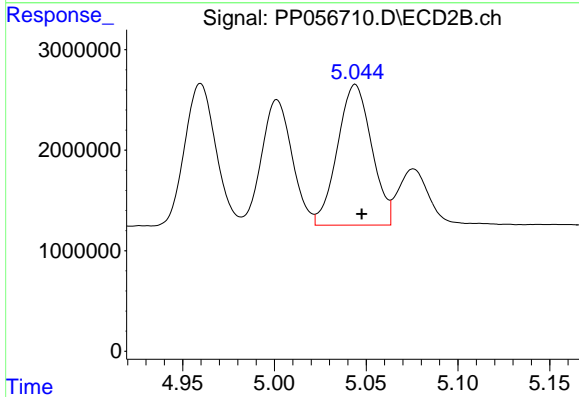
R.T.: 4.960 min
 Delta R.T.: -0.004 min
 Response: 16645518
 Conc: 515.93 ng/ml



#19 AR-1242-4

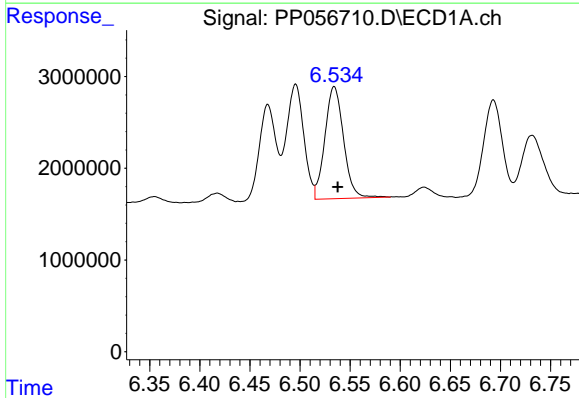
R.T.: 5.793 min
 Delta R.T.: -0.003 min
 Response: 16911280
 Conc: 468.68 ng/ml

Instrument :
 ECD_P
 ClientSampleId :



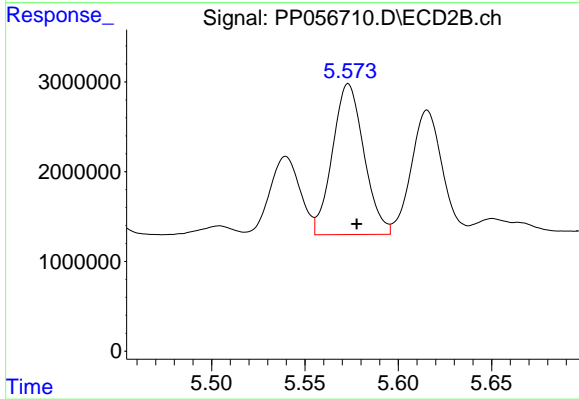
#19 AR-1242-4

R.T.: 5.044 min
 Delta R.T.: -0.004 min
 Response: 18181570
 Conc: 499.01 ng/ml



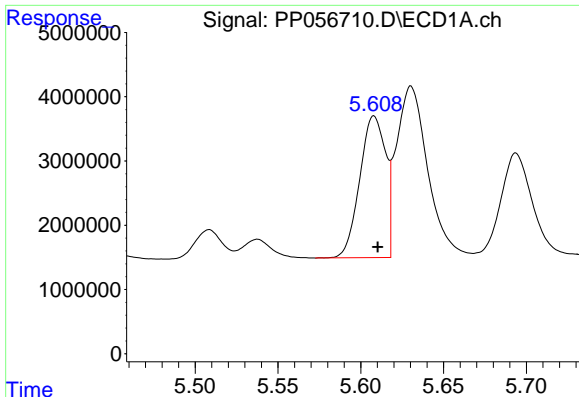
#20 AR-1242-5

R.T.: 6.534 min
 Delta R.T.: -0.004 min
 Response: 15843716
 Conc: 477.31 ng/ml



#20 AR-1242-5

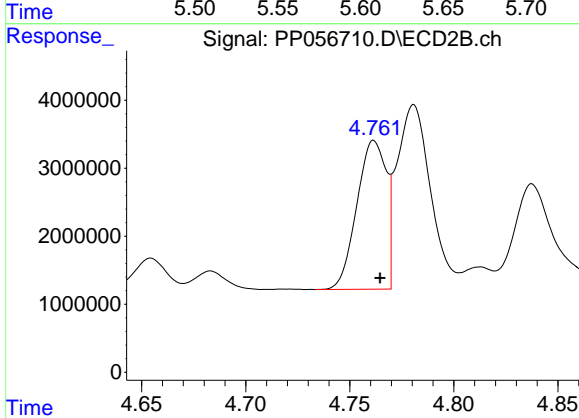
R.T.: 5.573 min
 Delta R.T.: -0.005 min
 Response: 19716482
 Conc: 494.49 ng/ml



#21 AR-1248-1

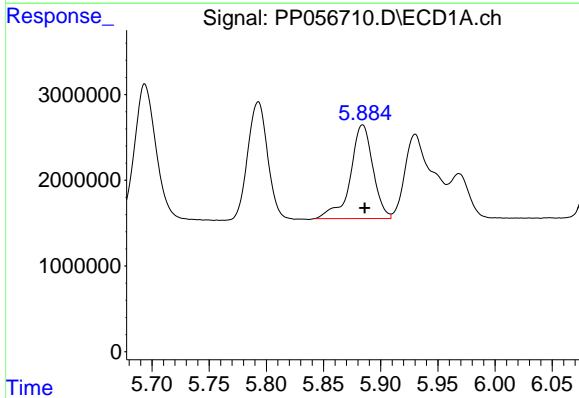
R.T.: 5.608 min
 Delta R.T.: -0.002 min
 Response: 23903129
 Conc: 637.09 ng/ml

Instrument :
 ECD_P
 ClientSampleId :



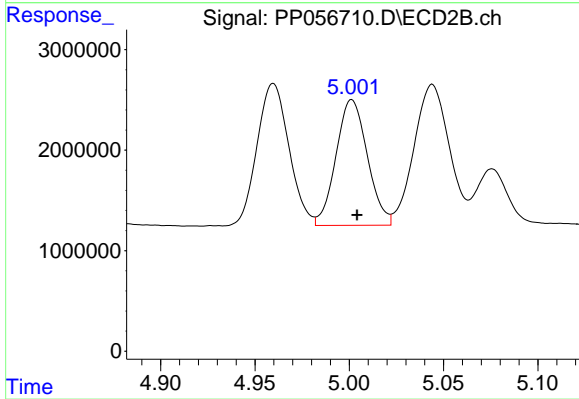
#21 AR-1248-1

R.T.: 4.762 min
 Delta R.T.: -0.003 min
 Response: 21486931
 Conc: 652.75 ng/ml



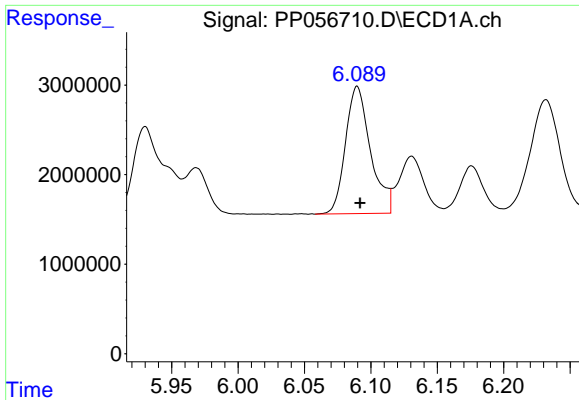
#22 AR-1248-2

R.T.: 5.884 min
 Delta R.T.: -0.002 min
 Response: 14992525
 Conc: 254.57 ng/ml



#22 AR-1248-2

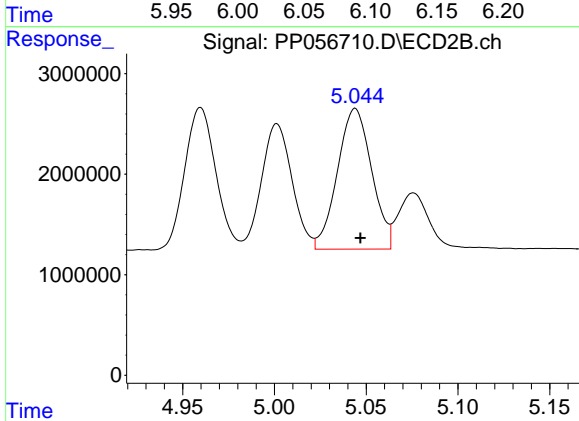
R.T.: 5.001 min
 Delta R.T.: -0.003 min
 Response: 14492772
 Conc: 281.18 ng/ml



#23 AR-1248-3

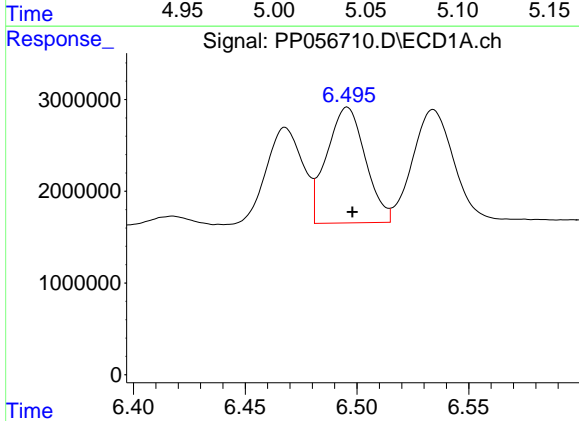
R.T.: 6.090 min
 Delta R.T.: -0.002 min
 Response: 18615026
 Conc: 292.17 ng/ml

Instrument :
 ECD_P
 ClientSampleId :



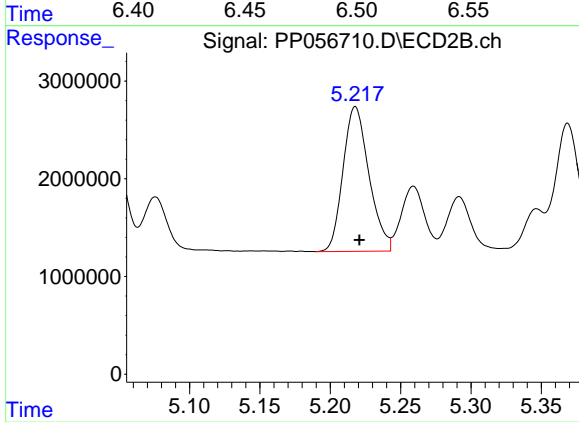
#23 AR-1248-3

R.T.: 5.044 min
 Delta R.T.: -0.003 min
 Response: 18181570
 Conc: 338.69 ng/ml



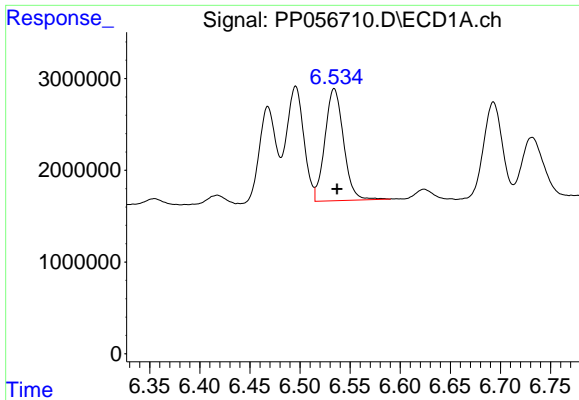
#24 AR-1248-4

R.T.: 6.496 min
 Delta R.T.: -0.002 min
 Response: 15184757
 Conc: 261.47 ng/ml



#24 AR-1248-4

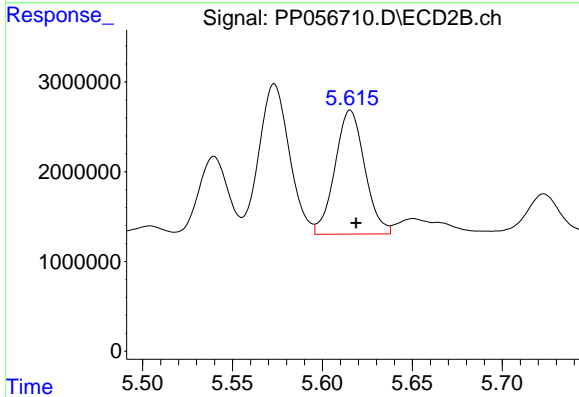
R.T.: 5.218 min
 Delta R.T.: -0.003 min
 Response: 19009277
 Conc: 307.22 ng/ml



#25 AR-1248-5

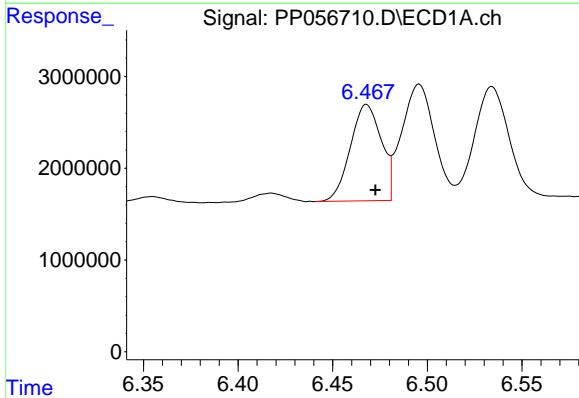
R.T.: 6.534 min
 Delta R.T.: -0.003 min
 Response: 15843716
 Conc: 280.49 ng/ml

Instrument :
 ECD_P
 ClientSampleId :



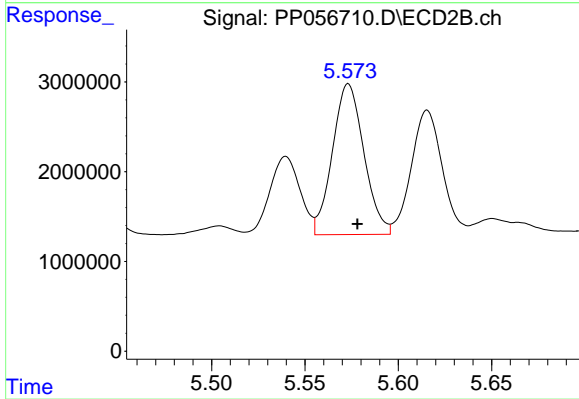
#25 AR-1248-5

R.T.: 5.615 min
 Delta R.T.: -0.003 min
 Response: 15920199
 Conc: 310.07 ng/ml



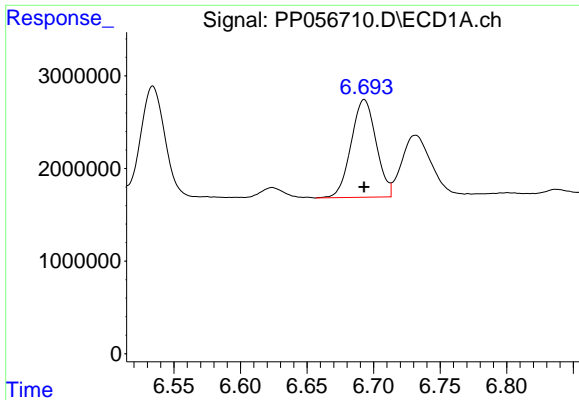
#26 AR-1254-1

R.T.: 6.468 min
 Delta R.T.: -0.005 min
 Response: 11968888
 Conc: 168.80 ng/ml



#26 AR-1254-1

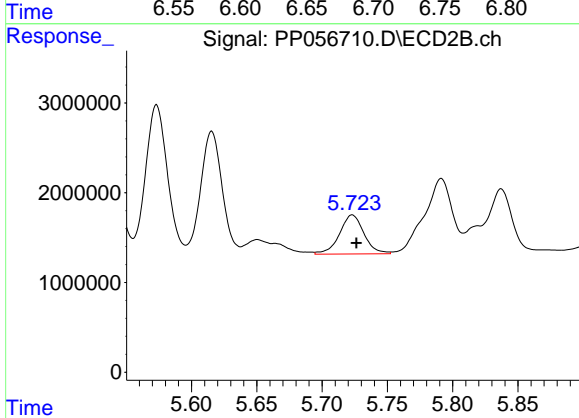
R.T.: 5.573 min
 Delta R.T.: -0.005 min
 Response: 19716482
 Conc: 214.04 ng/ml



#27 AR-1254-2

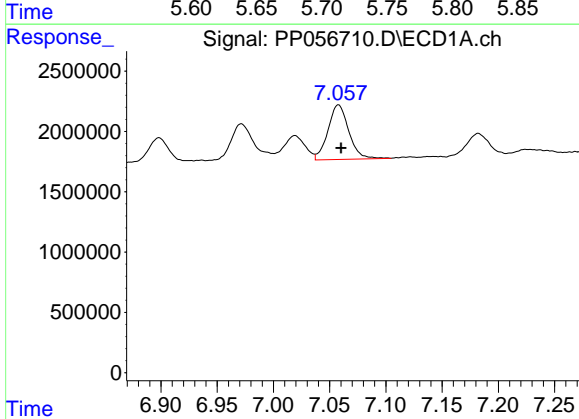
R.T.: 6.693 min
 Delta R.T.: 0.000 min
 Response: 13799869
 Conc: 136.08 ng/ml

Instrument :
 ECD_P
 ClientSampleId :



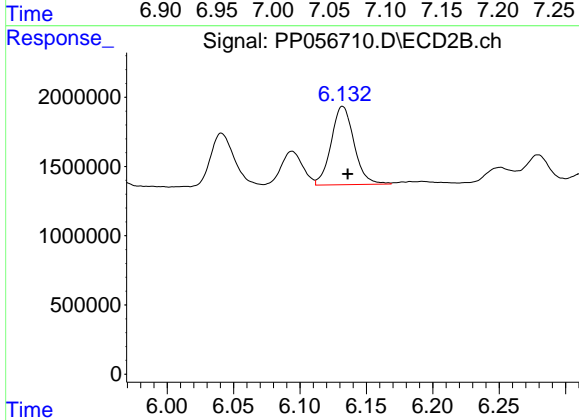
#27 AR-1254-2

R.T.: 5.723 min
 Delta R.T.: -0.003 min
 Response: 5678366
 Conc: 70.65 ng/ml



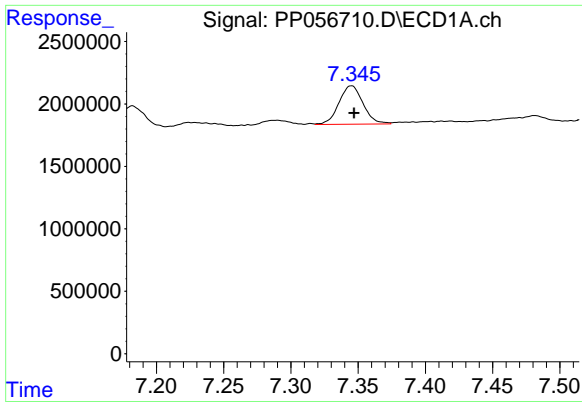
#28 AR-1254-3

R.T.: 7.058 min
 Delta R.T.: -0.002 min
 Response: 5833621
 Conc: 60.18 ng/ml



#28 AR-1254-3

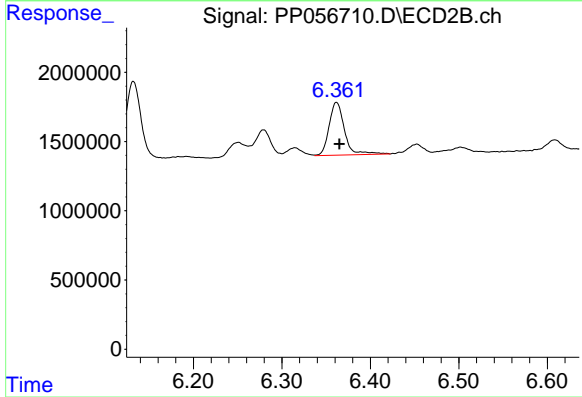
R.T.: 6.132 min
 Delta R.T.: -0.004 min
 Response: 6796927
 Conc: 54.98 ng/ml



#29 AR-1254-4

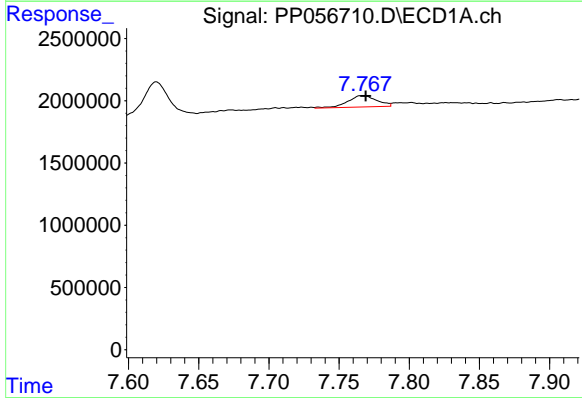
R.T.: 7.345 min
 Delta R.T.: -0.002 min
 Response: 3827315
 Conc: 62.71 ng/ml

Instrument :
 ECD_P
 ClientSampleId :



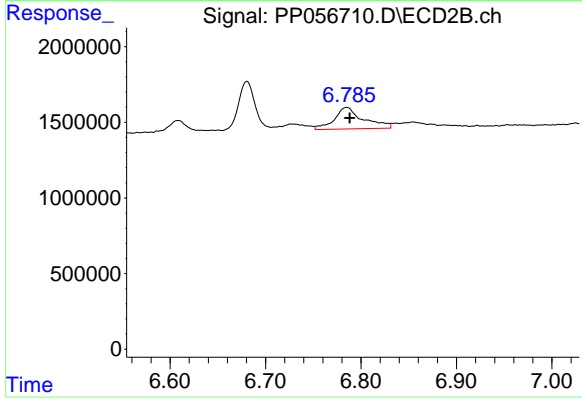
#29 AR-1254-4

R.T.: 6.362 min
 Delta R.T.: -0.003 min
 Response: 4622933
 Conc: 72.74 ng/ml



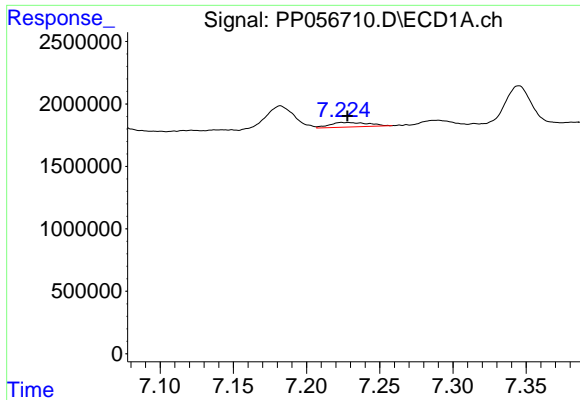
#30 AR-1254-5

R.T.: 7.767 min
 Delta R.T.: -0.002 min
 Response: 1314401
 Conc: 19.29 ng/ml



#30 AR-1254-5

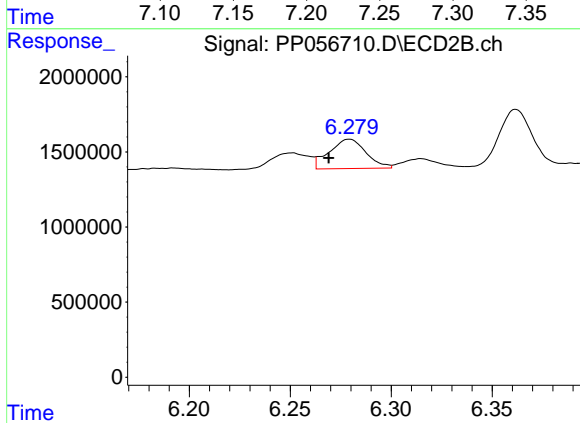
R.T.: 6.785 min
 Delta R.T.: -0.003 min
 Response: 3010592
 Conc: 28.64 ng/ml



#31 AR-1260-1

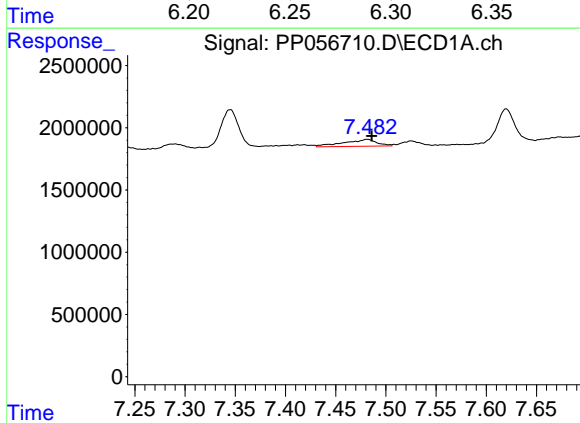
R.T.: 7.224 min
 Delta R.T.: -0.004 min
 Response: 661695
 Conc: 8.13 ng/ml

Instrument :
 ECD_P
 ClientSampleId :



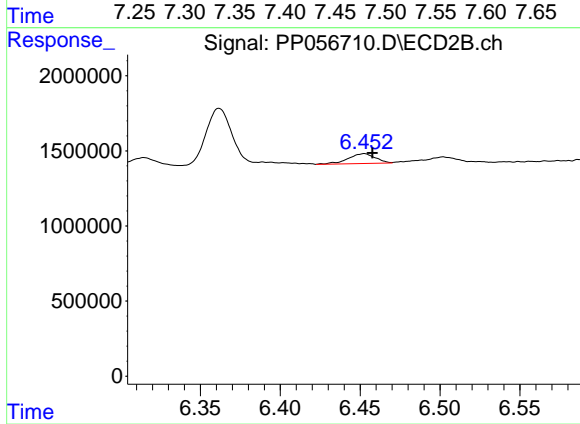
#31 AR-1260-1

R.T.: 6.279 min
 Delta R.T.: 0.010 min
 Response: 2475039
 Conc: 25.88 ng/ml



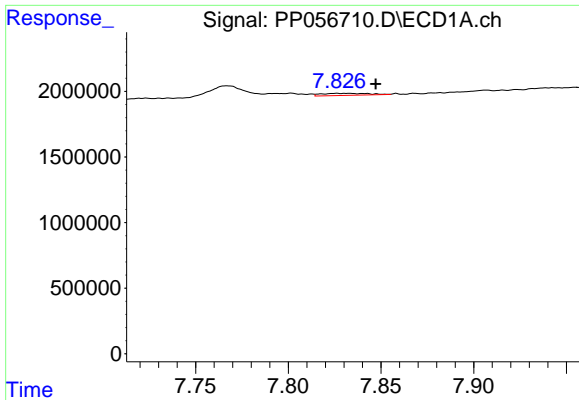
#32 AR-1260-2

R.T.: 7.482 min
 Delta R.T.: -0.004 min
 Response: 1289939
 Conc: 15.12 ng/ml



#32 AR-1260-2

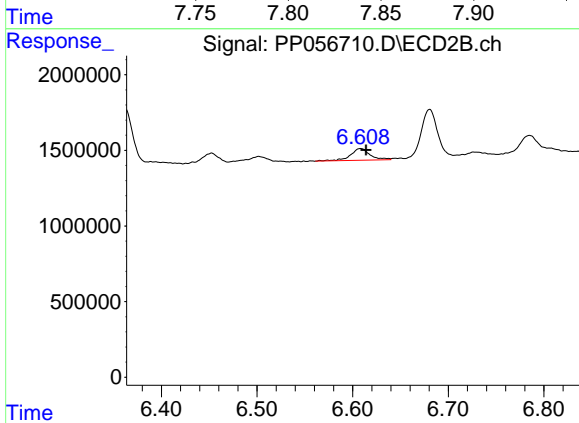
R.T.: 6.453 min
 Delta R.T.: -0.005 min
 Response: 769982
 Conc: 7.46 ng/ml



#33 AR-1260-3

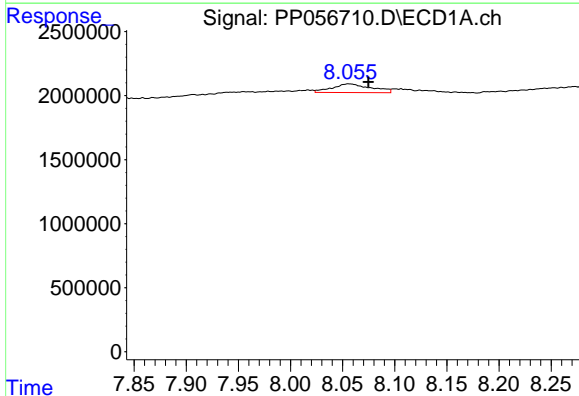
R.T.: 7.826 min
 Delta R.T.: -0.021 min
 Response: 274432
 Conc: 3.93 ng/ml

Instrument :
 ECD_P
 ClientSampleId :



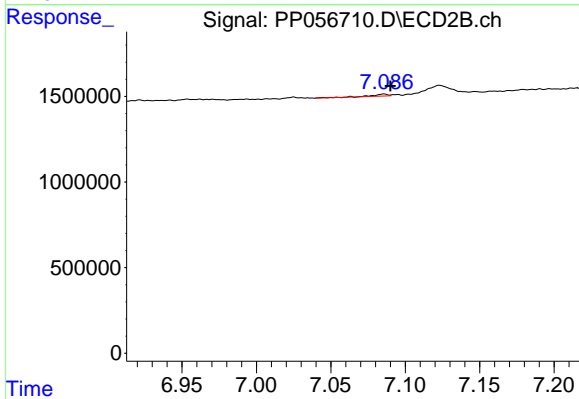
#33 AR-1260-3

R.T.: 6.609 min
 Delta R.T.: -0.005 min
 Response: 1111471
 Conc: 10.72 ng/ml



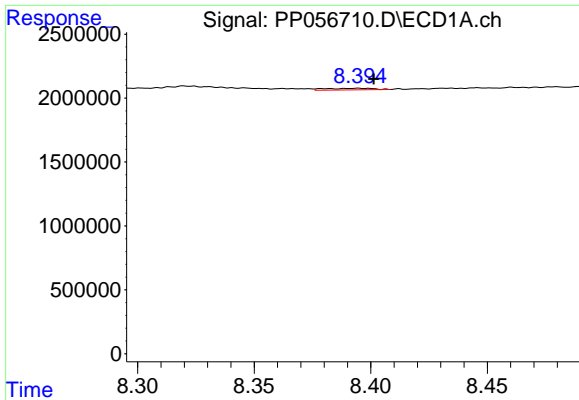
#34 AR-1260-4

R.T.: 8.056 min
 Delta R.T.: -0.019 min
 Response: 1753748
 Conc: 22.99 ng/ml



#34 AR-1260-4

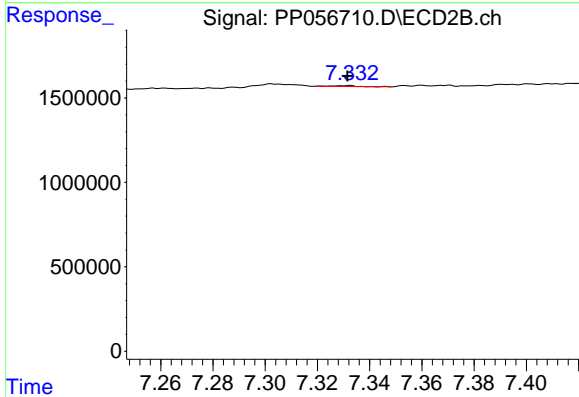
R.T.: 7.086 min
 Delta R.T.: -0.004 min
 Response: 78391
 Conc: 0.92 ng/ml



#35 AR-1260-5

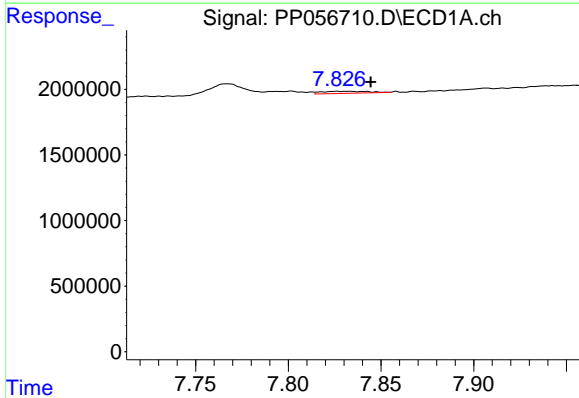
R.T.: 8.394 min
 Delta R.T.: -0.007 min
 Response: 190297
 Conc: 1.50 ng/ml

Instrument :
 ECD_P
 ClientSampleId :



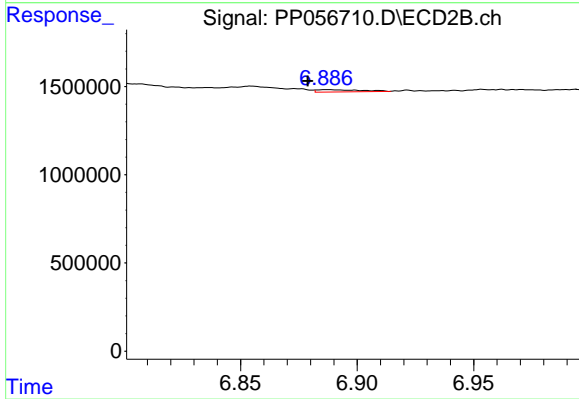
#35 AR-1260-5

R.T.: 7.332 min
 Delta R.T.: 0.000 min
 Response: 36586
 Conc: 0.23 ng/ml



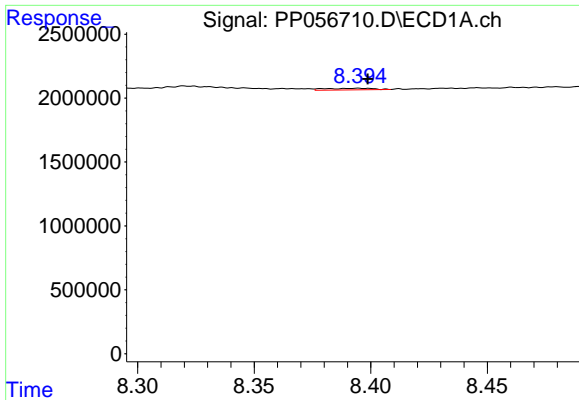
#36 AR-1262-1

R.T.: 7.826 min
 Delta R.T.: -0.018 min
 Response: 274432
 Conc: 3.12 ng/ml



#36 AR-1262-1

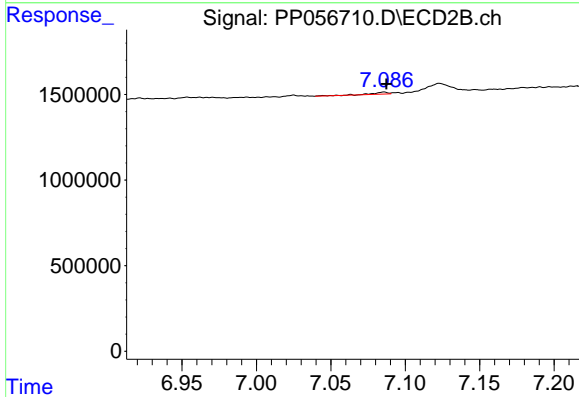
R.T.: 6.887 min
 Delta R.T.: 0.009 min
 Response: 166392
 Conc: 3.56 ng/ml



#37 AR-1262-2

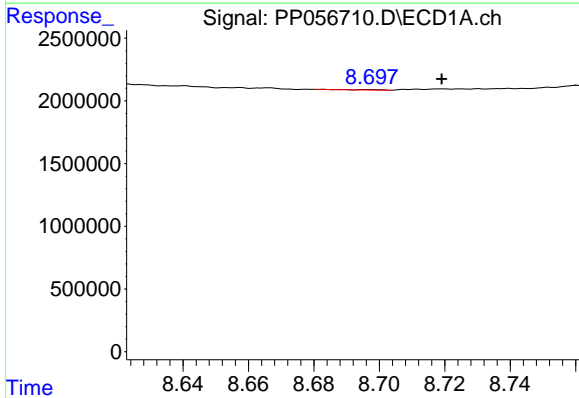
R.T.: 8.394 min
 Delta R.T.: -0.004 min
 Response: 190297
 Conc: 1.47 ng/ml

Instrument :
 ECD_P
 ClientSampleId :



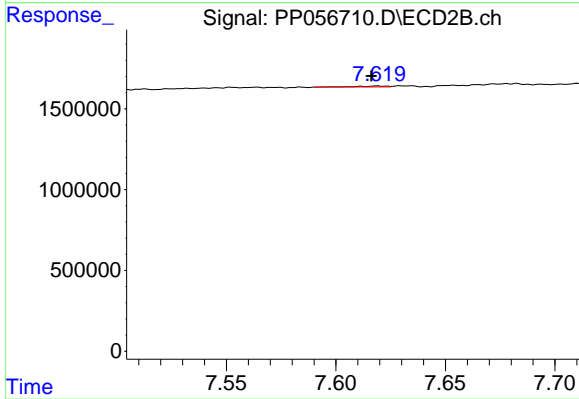
#37 AR-1262-2

R.T.: 7.086 min
 Delta R.T.: -0.002 min
 Response: 78391
 Conc: 0.80 ng/ml



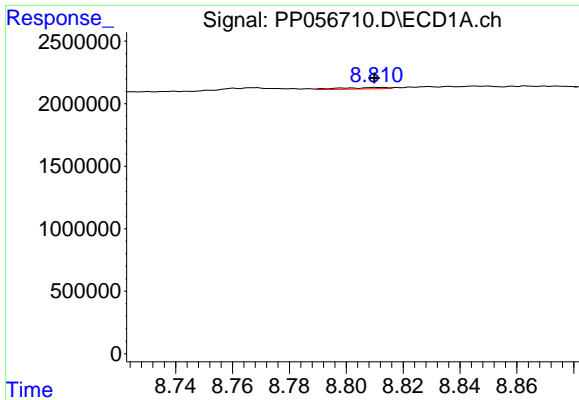
#38 AR-1262-3

R.T.: 8.696 min
 Delta R.T.: -0.023 min
 Response: 22376
 Conc: 0.24 ng/ml



#38 AR-1262-3

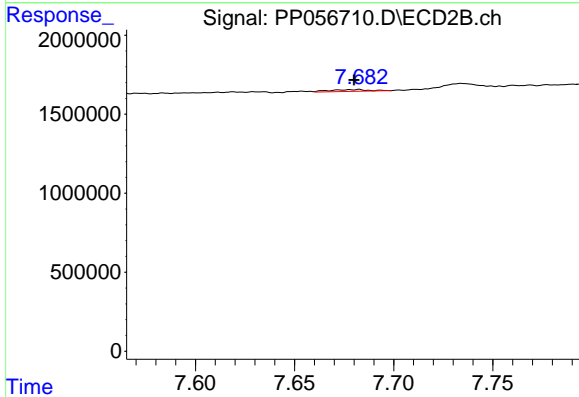
R.T.: 7.619 min
 Delta R.T.: 0.003 min
 Response: 47050
 Conc: 0.71 ng/ml



#39 AR-1262-4

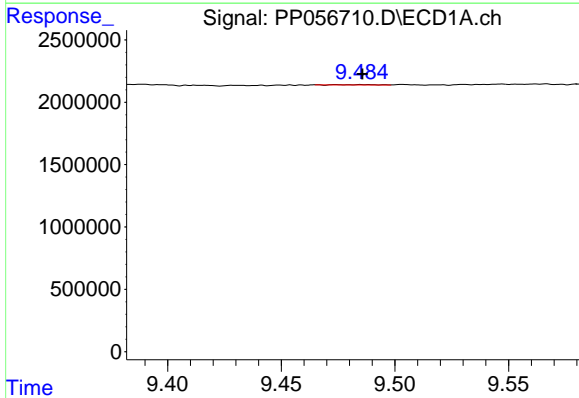
R.T.: 8.811 min
 Delta R.T.: 0.001 min
 Response: 126009
 Conc: 2.78 ng/ml

Instrument :
 ECD_P
 ClientSampleId :



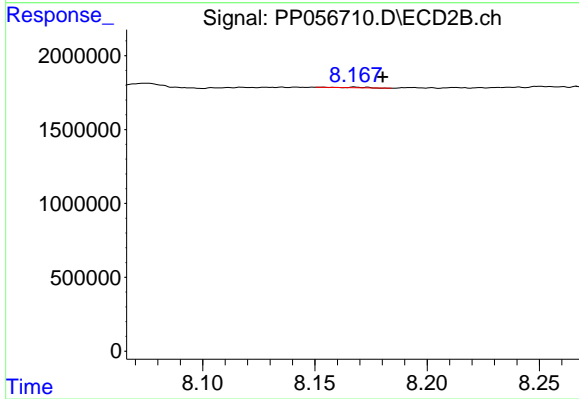
#39 AR-1262-4

R.T.: 7.682 min
 Delta R.T.: 0.002 min
 Response: 161613
 Conc: 1.37 ng/ml



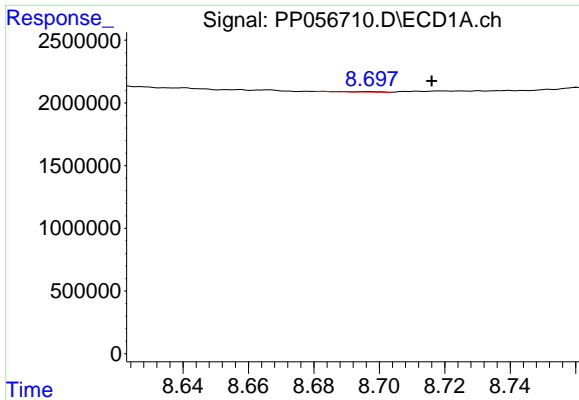
#40 AR-1262-5

R.T.: 9.485 min
 Delta R.T.: 0.000 min
 Response: 37309
 Conc: 0.93 ng/ml



#40 AR-1262-5

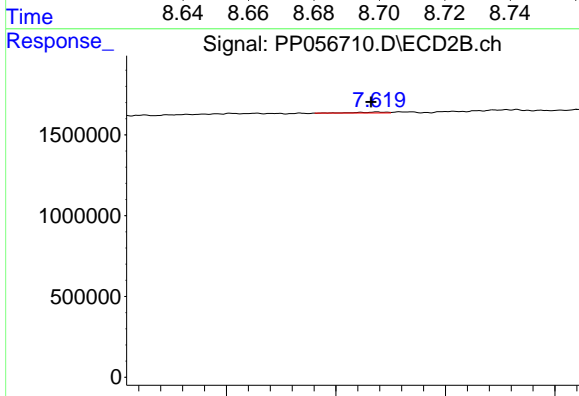
R.T.: 8.168 min
 Delta R.T.: -0.012 min
 Response: 26338
 Conc: 0.54 ng/ml



#41 AR-1268-1

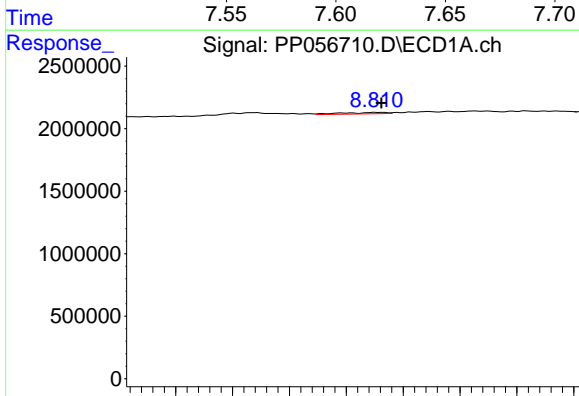
R.T.: 8.696 min
 Delta R.T.: -0.020 min
 Response: 22376
 Conc: 0.12 ng/ml

Instrument :
 ECD_P
 ClientSampleId :



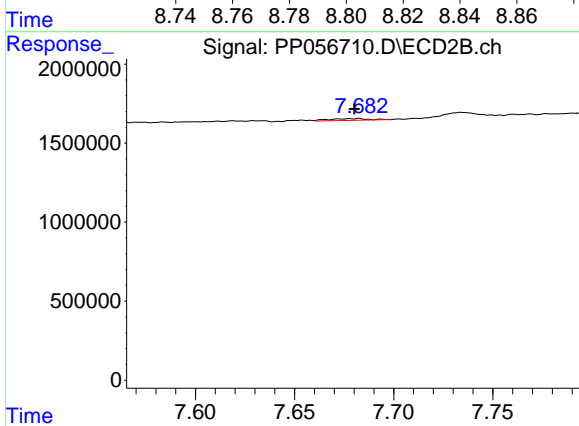
#41 AR-1268-1

R.T.: 7.619 min
 Delta R.T.: 0.003 min
 Response: 47050
 Conc: 0.21 ng/ml



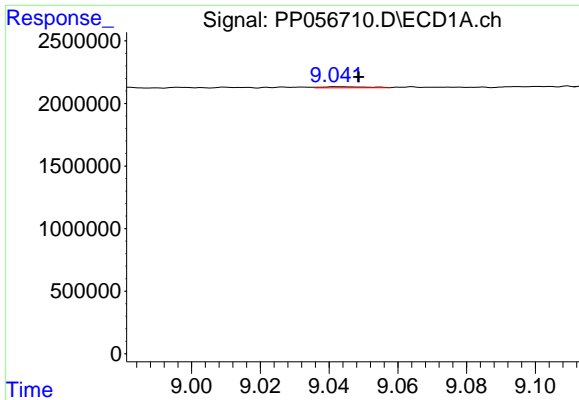
#42 AR-1268-2

R.T.: 8.811 min
 Delta R.T.: -0.001 min
 Response: 126009
 Conc: 0.76 ng/ml



#42 AR-1268-2

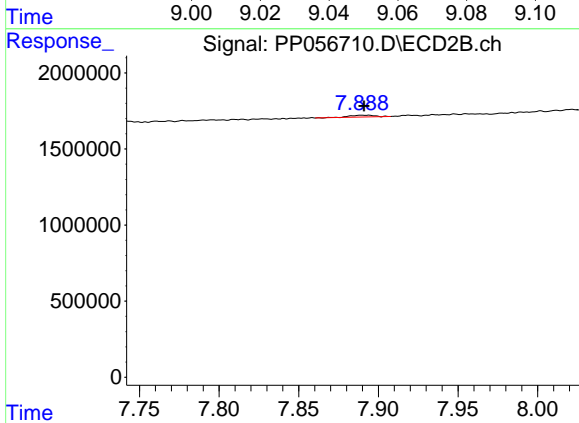
R.T.: 7.682 min
 Delta R.T.: 0.002 min
 Response: 161613
 Conc: 0.83 ng/ml



#43 AR-1268-3

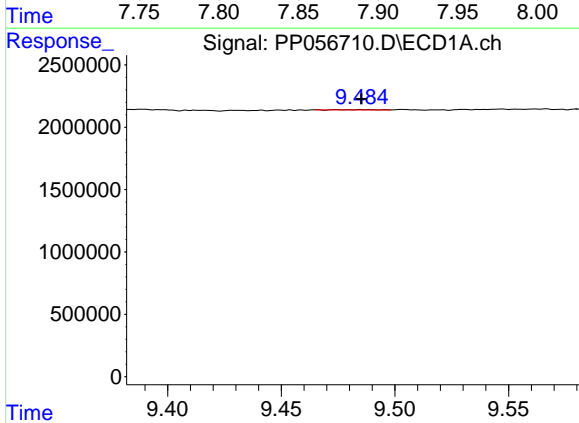
R.T.: 9.043 min
 Delta R.T.: -0.006 min
 Response: 77952
 Conc: 0.49 ng/ml

Instrument :
 ECD_P
 ClientSampleId :



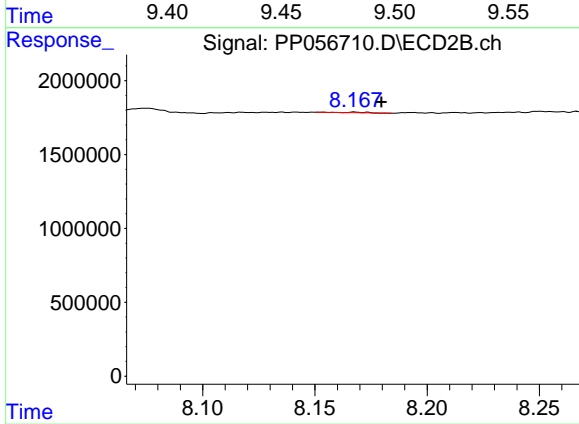
#43 AR-1268-3

R.T.: 7.890 min
 Delta R.T.: -0.001 min
 Response: 132324
 Conc: 0.67 ng/ml



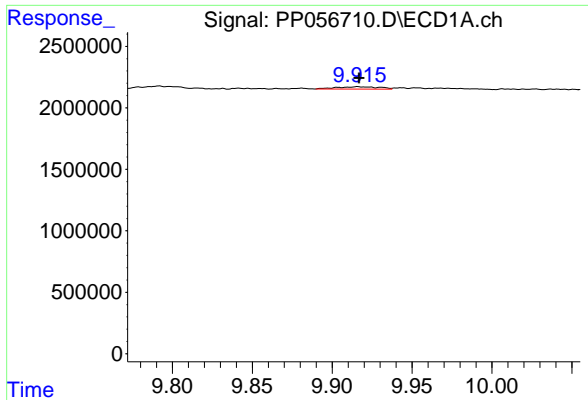
#44 AR-1268-4

R.T.: 9.485 min
 Delta R.T.: 0.000 min
 Response: 37309
 Conc: 0.80 ng/ml



#44 AR-1268-4

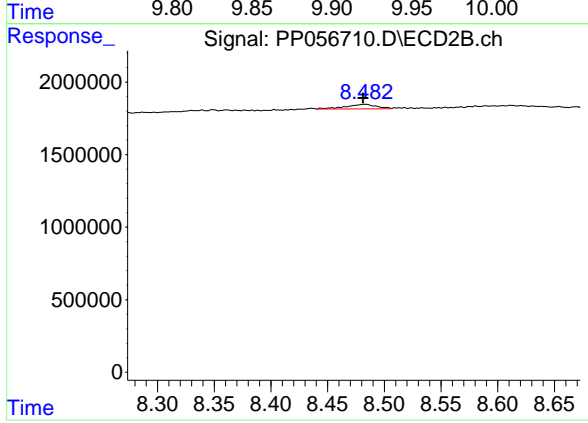
R.T.: 8.168 min
 Delta R.T.: -0.012 min
 Response: 26338
 Conc: 0.46 ng/ml



#45 AR-1268-5

R.T.: 9.916 min
Delta R.T.: 0.000 min
Response: 358430
Conc: 0.83 ng/ml

Instrument :
ECD_P
ClientSampleId :



#45 AR-1268-5

R.T.: 8.483 min
Delta R.T.: 0.002 min
Response: 588977
Conc: 1.16 ng/ml