

Data Path : Z:\pestpcbsrv\HPCHEM1\ECD_P\Data\PP040723\
 Data File : PP056752.D
 Signal(s) : Signal #1: ECD1A.ch Signal #2: ECD2B.ch
 Acq On : 07 Apr 2023 23:09
 Operator : YP\AJ
 Sample : 02213-01
 Misc : AR1268 LOD 40 PPB
 ALS Vial : 45 Sample Multiplier: 1

Instrument :
 ECD_P
ClientSampleId :
 LOD-MDL-SOIL-01-QT2-2023

Integration File signal 1: autoint1.e
 Integration File signal 2: autoint2.e
 Quant Time: Apr 08 12:55:18 2023
 Quant Method : Z:\pestpcbsrv\HPCHEM1\ECD_P\methods\PP040623.M
 Quant Title : GC EXTRACTABLES
 QLast Update : Fri Apr 07 04:14:17 2023
 Response via : Initial Calibration
 Integrator: ChemStation

Volume Inj. : 2 µl
 Signal #1 Phase : ZB-MR1 Signal #2 Phase: ZB-MR2
 Signal #1 Info : 30Mx0.32mmx 0.50µ Signal #2 Info : 30M x 0.32mm x 0.25µm

| Compound | RT#1 | RT#2 | Resp#1 | Resp#2 | ng/ml | ng/ml |
|-----------------------------|--------|-------|----------|----------|--------|--------|
| ----- | | | | | | |
| System Monitoring Compounds | | | | | | |
| 1) SA Tetrachlo... | 4.433 | 3.660 | 39002779 | 30772224 | 18.153 | 17.693 |
| 2) SA Decachlor... | 10.264 | 8.742 | 30944556 | 37274449 | 23.642 | 23.707 |
| Target Compounds | | | | | | |
| 41) L9 AR-1268-1 | 8.714 | 7.612 | 7957453 | 9628104 | 42.723 | 43.432 |
| 42) L9 AR-1268-2 | 8.810 | 7.676 | 7383022 | 8442848 | 44.490 | 43.475 |
| 43) L9 AR-1268-3 | 9.046 | 7.886 | 6679033 | 8440101 | 41.972 | 42.578 |
| 44) L9 AR-1268-4 | 9.482 | 8.175 | 1958957 | 2543344 | 42.192 | 43.970 |
| 45) L9 AR-1268-5 | 9.913 | 8.476 | 17132096 | 22666902 | 39.890 | 44.635 |
| ----- | | | | | | |

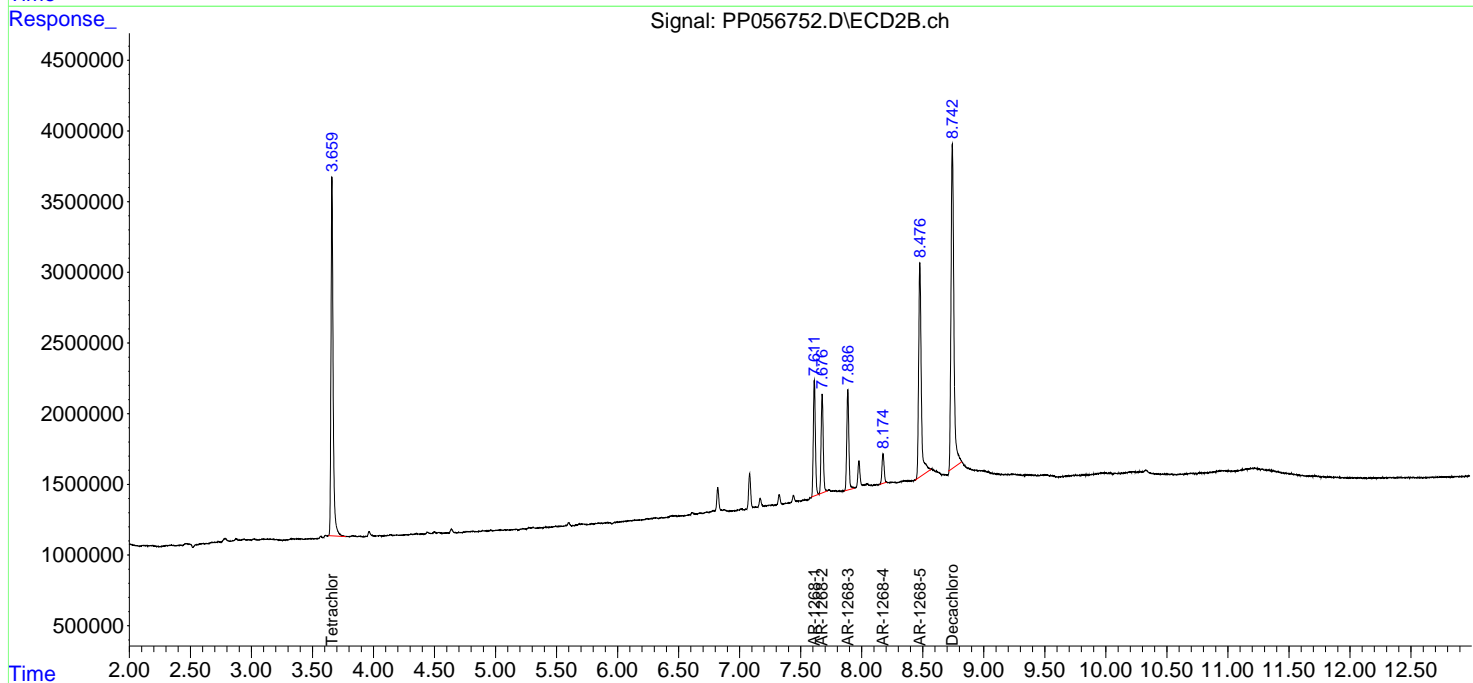
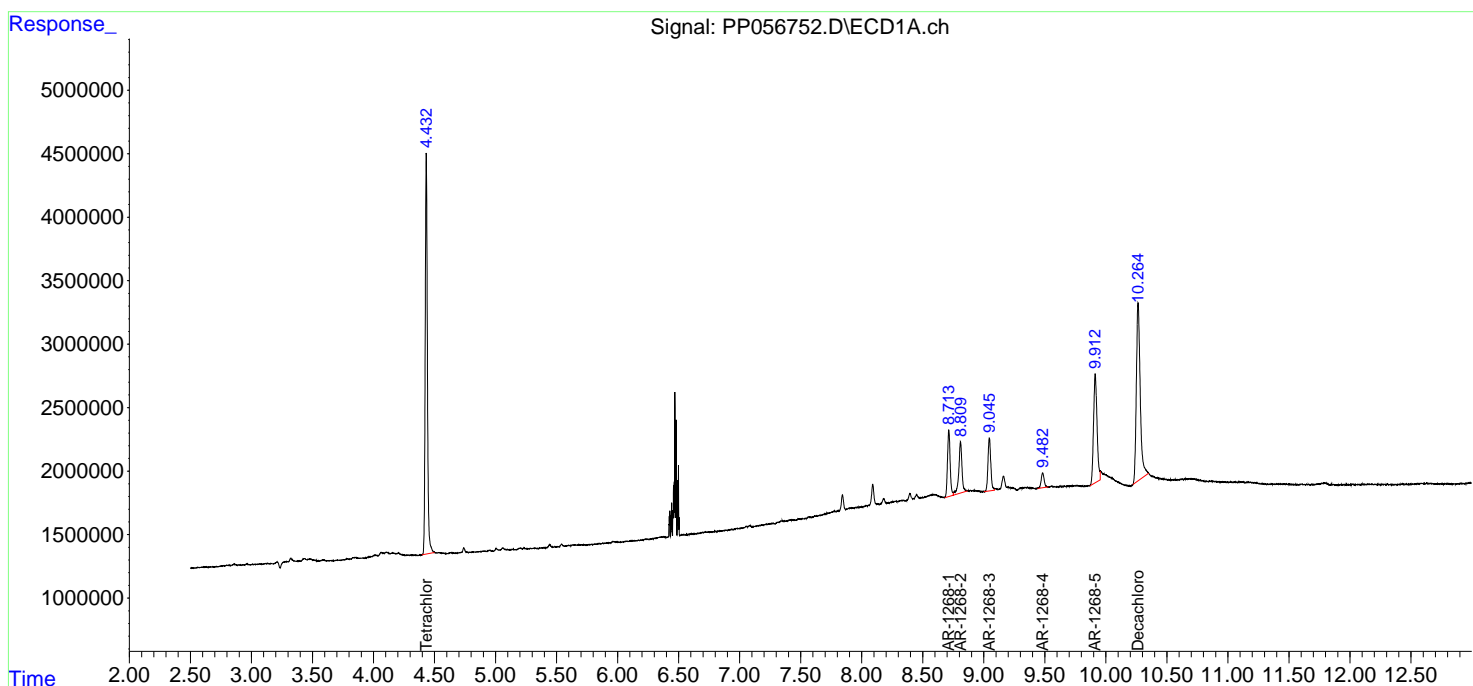
(f)=RT Delta > 1/2 Window (#)=Amounts differ by > 25% (m)=manual int.

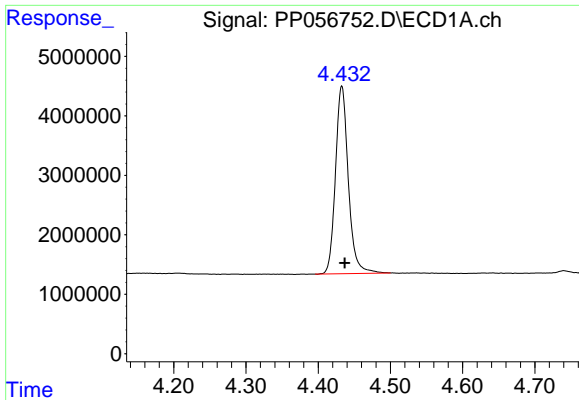
Data Path : Z:\pestpcbsrv\HPCHEM1\ECD_P\Data\PP040723\
 Data File : PP056752.D
 Signal(s) : Signal #1: ECD1A.ch Signal #2: ECD2B.ch
 Acq On : 07 Apr 2023 23:09
 Operator : YP\AJ
 Sample : 02213-01
 Misc : AR1268 LOD 40 PPB
 ALS Vial : 45 Sample Multiplier: 1

Instrument :
 ECD_P
 ClientSampleId :
 LOD-MDL-SOIL-01-QT2-2023

Integration File signal 1: autoint1.e
 Integration File signal 2: autoint2.e
 Quant Time: Apr 08 12:55:18 2023
 Quant Method : Z:\pestpcbsrv\HPCHEM1\ECD_P\methods\PP040623.M
 Quant Title : GC EXTRACTABLES
 QLast Update : Fri Apr 07 04:14:17 2023
 Response via : Initial Calibration
 Integrator: ChemStation

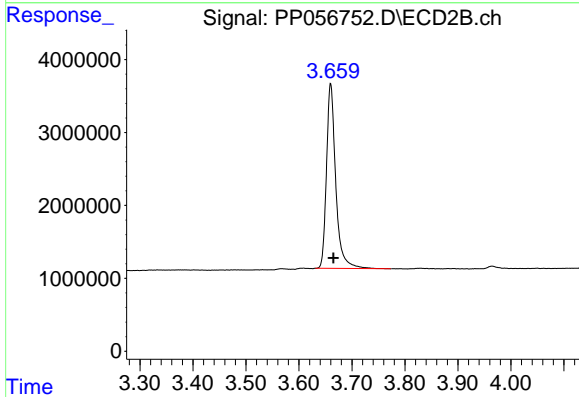
Volume Inj. : 2 µl
 Signal #1 Phase : ZB-MR1 Signal #2 Phase: ZB-MR2
 Signal #1 Info : 30Mx0.32mmx 0.50µ Signal #2 Info : 30M x 0.32mm x 0.25µm



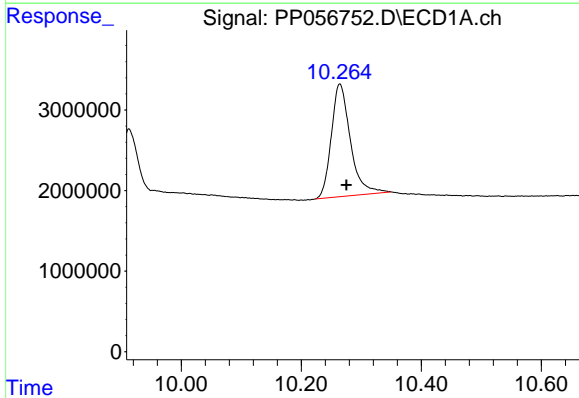


#1 Tetrachloro-m-xylene
R.T.: 4.433 min
Delta R.T.: -0.004 min
Response: 39002779
Conc: 18.15 ng/ml

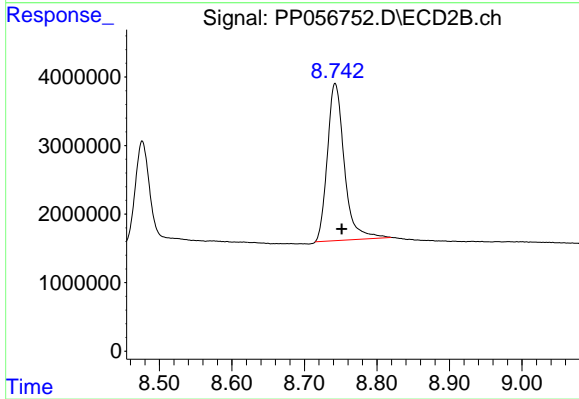
Instrument :
ECD_P
ClientSampleId :
LOD-MDL-SOIL-01-QT2-2023



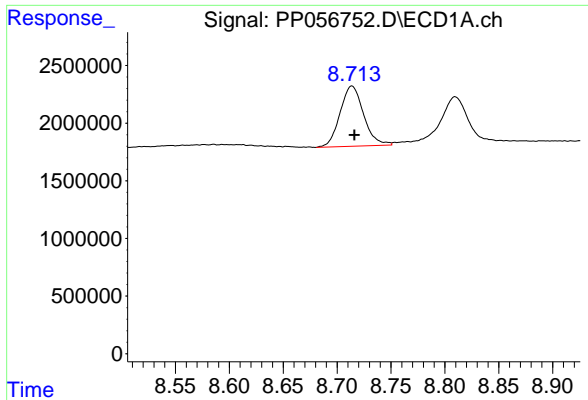
#1 Tetrachloro-m-xylene
R.T.: 3.660 min
Delta R.T.: -0.005 min
Response: 30772224
Conc: 17.69 ng/ml



#2 Decachlorobiphenyl
R.T.: 10.264 min
Delta R.T.: -0.011 min
Response: 30944556
Conc: 23.64 ng/ml



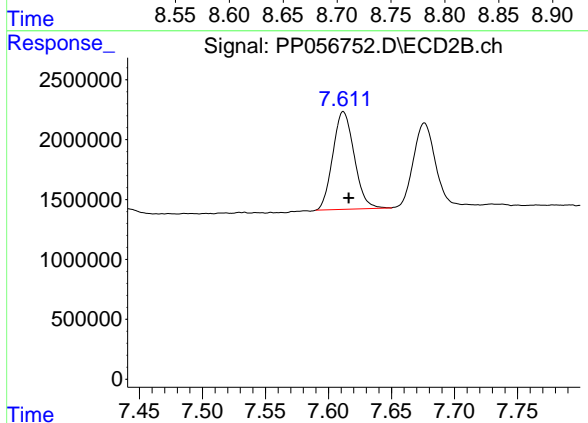
#2 Decachlorobiphenyl
R.T.: 8.742 min
Delta R.T.: -0.009 min
Response: 37274449
Conc: 23.71 ng/ml



#41 AR-1268-1

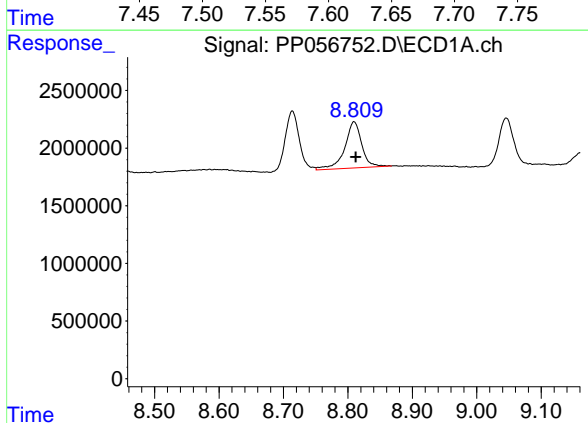
R.T.: 8.714 min
 Delta R.T.: -0.002 min
 Response: 7957453
 Conc: 42.72 ng/ml

Instrument :
 ECD_P
 ClientSampleId :
 LOD-MDL-SOIL-01-QT2-2023



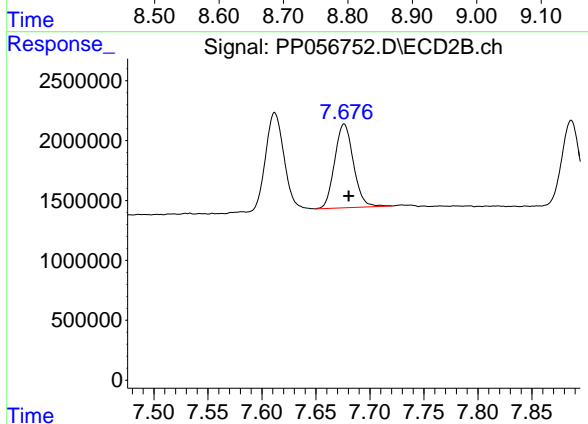
#41 AR-1268-1

R.T.: 7.612 min
 Delta R.T.: -0.004 min
 Response: 9628104
 Conc: 43.43 ng/ml



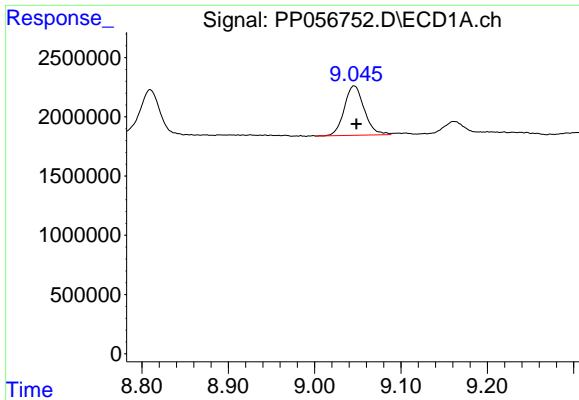
#42 AR-1268-2

R.T.: 8.810 min
 Delta R.T.: -0.003 min
 Response: 7383022
 Conc: 44.49 ng/ml



#42 AR-1268-2

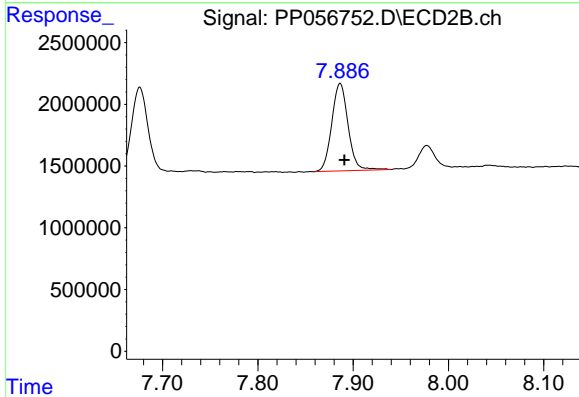
R.T.: 7.676 min
 Delta R.T.: -0.004 min
 Response: 8442848
 Conc: 43.47 ng/ml



#43 AR-1268-3

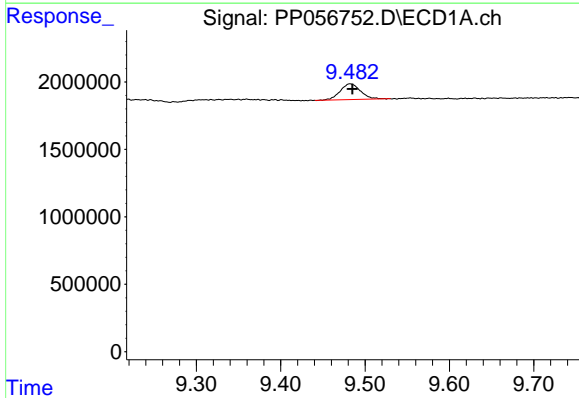
R.T.: 9.046 min
 Delta R.T.: -0.003 min
 Response: 6679033
 Conc: 41.97 ng/ml

Instrument :
 ECD_P
 ClientSampleId :
 LOD-MDL-SOIL-01-QT2-2023



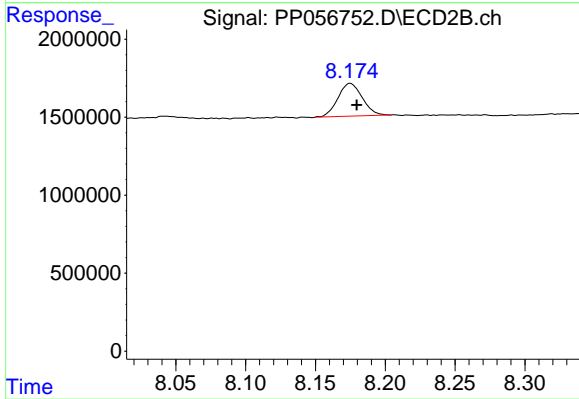
#43 AR-1268-3

R.T.: 7.886 min
 Delta R.T.: -0.005 min
 Response: 8440101
 Conc: 42.58 ng/ml



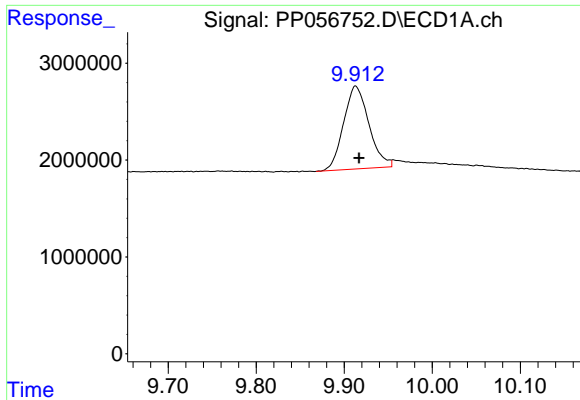
#44 AR-1268-4

R.T.: 9.482 min
 Delta R.T.: -0.003 min
 Response: 1958957
 Conc: 42.19 ng/ml



#44 AR-1268-4

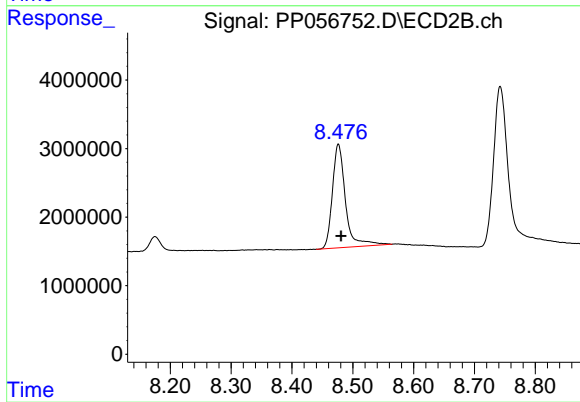
R.T.: 8.175 min
 Delta R.T.: -0.005 min
 Response: 2543344
 Conc: 43.97 ng/ml



#45 AR-1268-5

R.T.: 9.913 min
 Delta R.T.: -0.004 min
 Response: 17132096
 Conc: 39.89 ng/ml

Instrument :
 ECD_P
 ClientSampleId :
 LOD-MDL-SOIL-01-QT2-2023



#45 AR-1268-5

R.T.: 8.476 min
 Delta R.T.: -0.005 min
 Response: 22666902
 Conc: 44.63 ng/ml