

Data Path : Z:\pestpcbsrv\HPCHEM1\ECD\_P\Data\PP040822\  
 Data File : PP045761.D  
 Signal(s) : Signal #1: ECD1A.ch Signal #2: ECD2B.ch  
 Acq On : 09 Apr 2022 20:27  
 Operator : YP\AJ  
 Sample : N2333-07  
 Misc :  
 ALS Vial : 61 Sample Multiplier: 1

Instrument :  
 ECD\_P  
 ClientSampleId :

Integration File signal 1: autoint1.e  
 Integration File signal 2: autoint2.e  
 Quant Time: Apr 11 02:17:05 2022  
 Quant Method : Z:\pestpcbsrv\HPCHEM1\ECD\_P\methods\PP033022.M  
 Quant Title : GC EXTRACTABLES  
 QLast Update : Sat Apr 09 07:55:16 2022  
 Response via : Initial Calibration  
 Integrator: ChemStation

Volume Inj. : 2 µl  
 Signal #1 Phase : ZB-MR1 Signal #2 Phase: ZB-MR2  
 Signal #1 Info : 30Mx0.32mmx 0.50µ Signal #2 Info : 30M x 0.32mm x 0.25µm

Compound	RT#1	RT#2	Resp#1	Resp#2	ng/ml	ng/ml
-----						
System Monitoring Compounds						
1) SA Tetrachlo...	3.883	3.144	55367686	34704427	22.947	21.932
2) SA Decachlor...	9.987	8.483	20078463	21191858	14.013	13.975
Target Compounds						
3) L1 AR-1016-1	5.137	4.279	51651	37057	0.719	0.623
4) L1 AR-1016-2	5.151	4.301	158319	62076	1.474	0.738 #
5) L1 AR-1016-3	5.228	4.488	145145	4210	2.206	0.093 #
6) L1 AR-1016-4	5.323	4.522	128713	19891	2.350	0.538 #
7) L1 AR-1016-5	5.651	4.760	58952	429522	1.138	8.970 #
8) L2 AR-1221-1	4.105	3.368	4348843	16229	173.192	0.780 #
9) L2 AR-1221-2	4.201	3.436f	543030	3623491	28.320	228.869 #
10) L2 AR-1221-3	4.289	3.544	168949	20416	2.811	0.436 #
11) L3 AR-1232-1	4.289	3.544	168949	20416	3.426	0.556 #
12) L3 AR-1232-2	4.847	4.310	97480	19653	4.424	0.576 #
13) L3 AR-1232-3	5.172	4.488	38082	4210	0.885	0.230 #
14) L3 AR-1232-4	5.334	4.583	70129	24645	3.209	1.505 #
15) L3 AR-1232-5	5.426	4.760	233424	429522	14.656	22.985 #
16) L4 AR-1242-1	5.137	4.292	51651	33235	0.888	0.683
17) L4 AR-1242-2	5.151	4.310	158319	19653	1.824	0.293 #
18) L4 AR-1242-3	5.228	4.488	145145	4210	2.683	0.114 #
19) L4 AR-1242-4	5.334	4.583	70129	24645	1.555	0.683 #
20) L4 AR-1242-5	6.133	5.150	804183	228518	17.345	4.807 #
21) L5 AR-1248-1	5.137	4.292	51651	33235	1.129	0.872
22) L5 AR-1248-2	5.426	4.548	233424	88704	3.794	1.722 #
23) L5 AR-1248-3	5.651	4.583	58952	24645	0.824	0.458 #
24) L5 AR-1248-4	6.083	4.760	432962	429522	5.759	6.675
25) L5 AR-1248-5	6.133	5.180	804183	75967	10.716	1.168 #
26) L6 AR-1254-1	6.072	5.150	352727	228518	4.954	2.348 #
27) L6 AR-1254-2	6.308	5.301	292961	68971	2.712	0.846 #
28) L6 AR-1254-3	6.702	5.727	384035	296070	3.464	2.395 #
29) L6 AR-1254-4	7.011	5.978	361631	275595	4.499	3.437
30) L6 AR-1254-5	7.495f	6.432	1855026	16956	23.199	0.155 #
31) L7 AR-1260-1	6.880	5.858	318153	426002	3.989	5.139 #
32) L7 AR-1260-2	7.149	6.065	264896	147769	2.940	1.517 #
33) L7 AR-1260-3	7.546	6.235	221299	171122	3.194	1.850 #
34) L7 AR-1260-4	7.793	6.738	131252	35527	1.701	0.464 #
35) L7 AR-1260-5	8.142	7.015	123016	318324	0.871	1.800 #
36) L8 AR-1262-1	7.562	6.466	311457	47540	3.088	0.423 #
37) L8 AR-1262-2	8.142	6.758	123016	186109	0.731	1.842 #
38) L8 AR-1262-3	8.469	7.328	155306	128815	1.343	1.592
39) L8 AR-1262-4	8.575	7.398	1099757	82745	17.987	0.559 #
40) L8 AR-1262-5	9.247	7.939	482650	348187	7.897	4.784 #
41) L9 AR-1268-1	8.469	7.328	155306	128815	0.769	0.576 #

Data Path : Z:\pestpcbsrv\HPCHEM1\ECD\_P\Data\PP040822\  
 Data File : PP045761.D  
 Signal(s) : Signal #1: ECD1A.ch Signal #2: ECD2B.ch  
 Acq On : 09 Apr 2022 20:27  
 Operator : YP\AJ  
 Sample : N2333-07  
 Misc :  
 ALS Vial : 61 Sample Multiplier: 1

Instrument :  
 ECD\_P  
 ClientSampleId :

Integration File signal 1: autoint1.e  
 Integration File signal 2: autoint2.e  
 Quant Time: Apr 11 02:17:05 2022  
 Quant Method : Z:\pestpcbsrv\HPCHEM1\ECD\_P\methods\PP033022.M  
 Quant Title : GC EXTRACTABLES  
 QLast Update : Sat Apr 09 07:55:16 2022  
 Response via : Initial Calibration  
 Integrator: ChemStation

Volume Inj. : 2 µl  
 Signal #1 Phase : ZB-MR1 Signal #2 Phase: ZB-MR2  
 Signal #1 Info : 30Mx0.32mmx 0.50µ Signal #2 Info : 30M x 0.32mm x 0.25µm

	Compound	RT#1	RT#2	Resp#1	Resp#2	ng/ml	ng/ml
42)	L9 AR-1268-2	8.575	7.398	1099757	82745	5.884	0.409 #
43)	L9 AR-1268-3	8.804	7.621	45298	93565	0.274	0.547 #
44)	L9 AR-1268-4	9.247	7.939	482650	348187	7.210	4.398 #
45)	L9 AR-1268-5	9.661	8.245	170151	122500	0.328	0.229 #

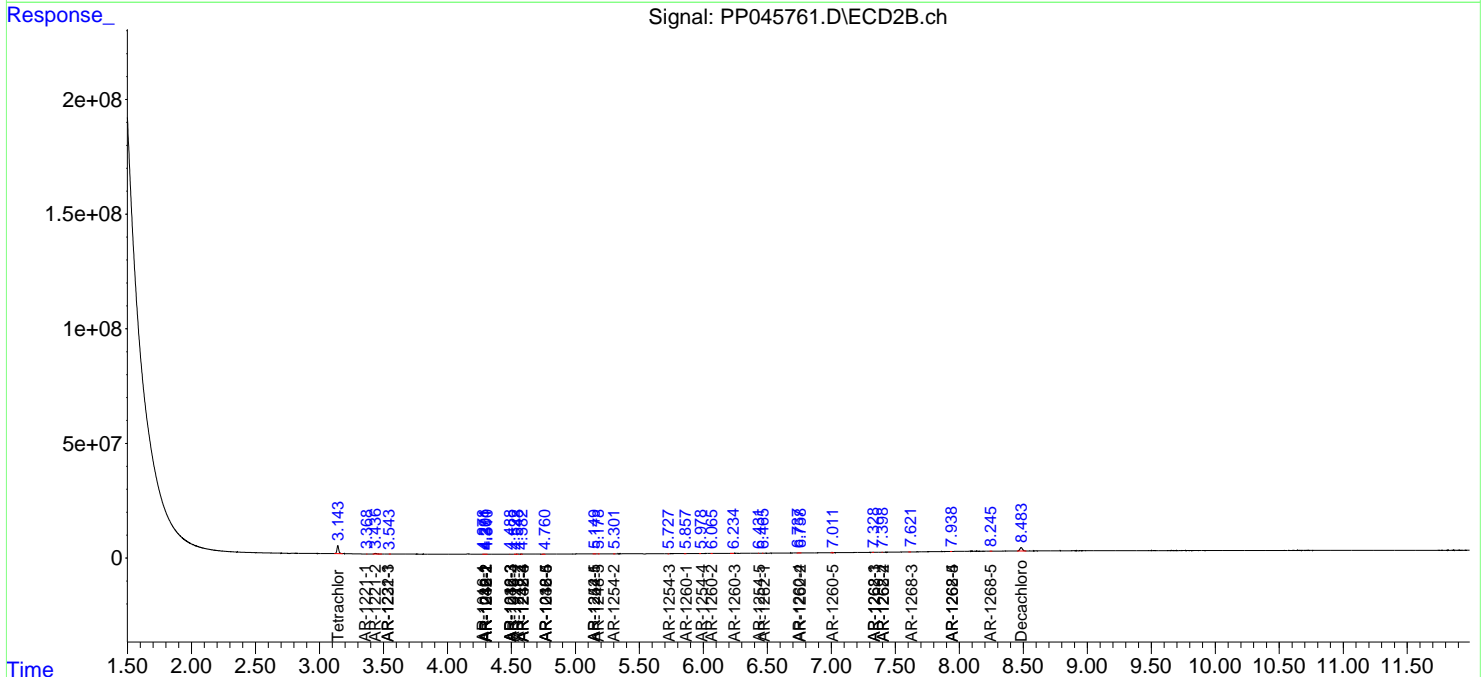
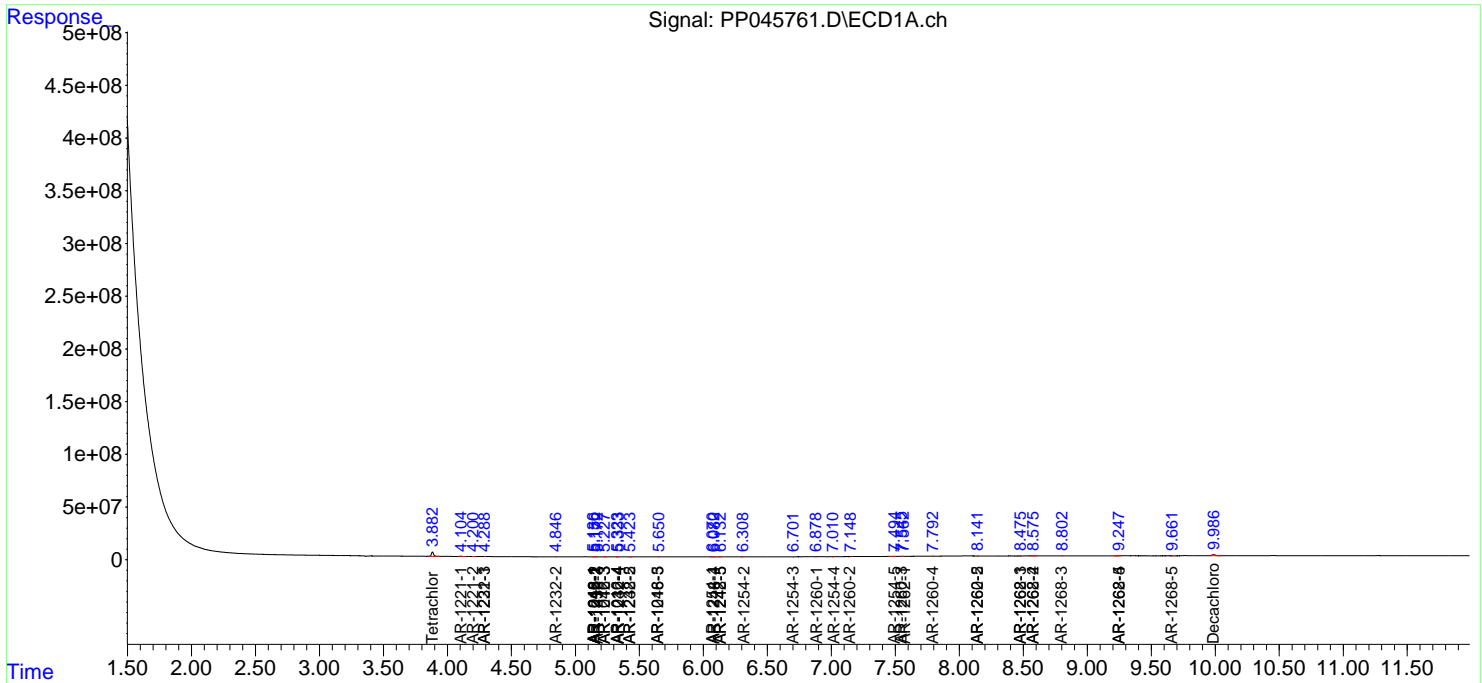
(f)=RT Delta > 1/2 Window (#)=Amounts differ by > 25% (m)=manual int.

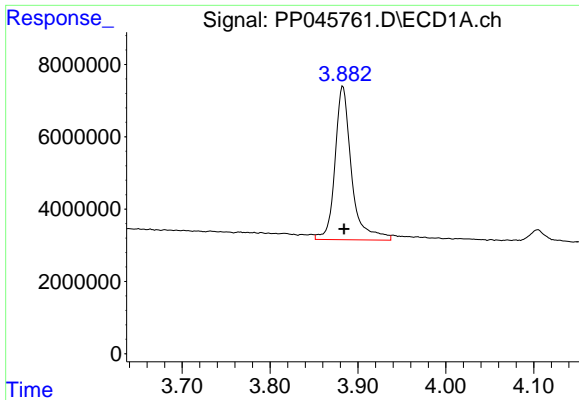
Data Path : Z:\pestpcbsrv\HPCHEM1\ECD\_P\Data\PP040822\  
 Data File : PP045761.D  
 Signal(s) : Signal #1: ECD1A.ch Signal #2: ECD2B.ch  
 Acq On : 09 Apr 2022 20:27  
 Operator : YP\AJ  
 Sample : N2333-07  
 Misc :  
 ALS Vial : 61 Sample Multiplier: 1

Instrument :  
 ECD\_P  
 ClientSampleId :

Integration File signal 1: autoint1.e  
 Integration File signal 2: autoint2.e  
 Quant Time: Apr 11 02:17:05 2022  
 Quant Method : Z:\pestpcbsrv\HPCHEM1\ECD\_P\methods\PP033022.M  
 Quant Title : GC EXTRACTABLES  
 QLast Update : Sat Apr 09 07:55:16 2022  
 Response via : Initial Calibration  
 Integrator: ChemStation

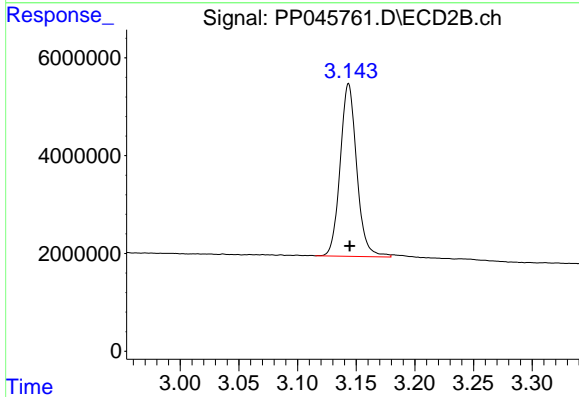
Volume Inj. : 2 µl  
 Signal #1 Phase : ZB-MR1 Signal #2 Phase: ZB-MR2  
 Signal #1 Info : 30Mx0.32mmx 0.50µ Signal #2 Info : 30M x 0.32mm x 0.25µm



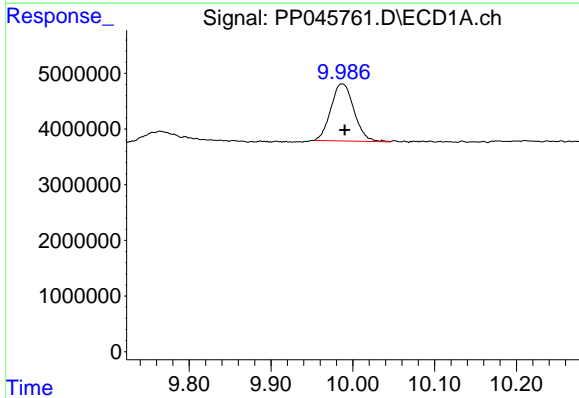


#1 Tetrachloro-m-xylene  
 R.T.: 3.883 min  
 Delta R.T.: -0.001 min  
 Response: 55367686  
 Conc: 22.95 ng/ml

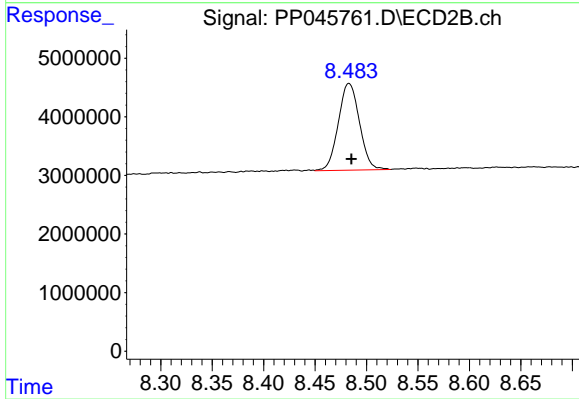
Instrument :  
 ECD\_P  
 ClientSampleId :



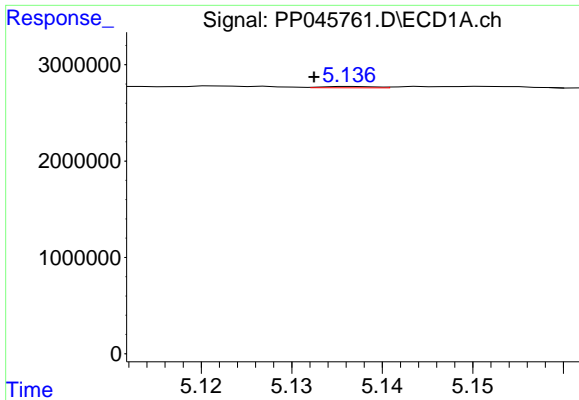
#1 Tetrachloro-m-xylene  
 R.T.: 3.144 min  
 Delta R.T.: 0.000 min  
 Response: 34704427  
 Conc: 21.93 ng/ml



#2 Decachlorobiphenyl  
 R.T.: 9.987 min  
 Delta R.T.: -0.003 min  
 Response: 20078463  
 Conc: 14.01 ng/ml



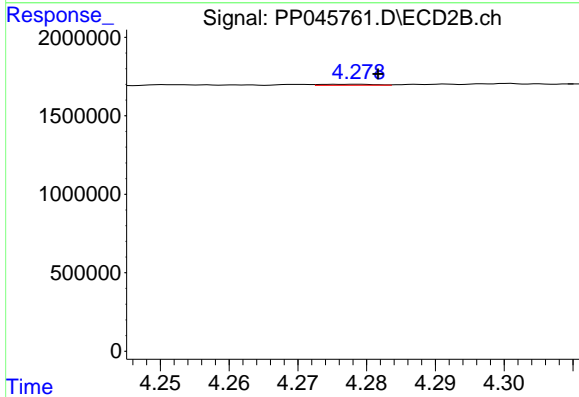
#2 Decachlorobiphenyl  
 R.T.: 8.483 min  
 Delta R.T.: -0.002 min  
 Response: 21191858  
 Conc: 13.97 ng/ml



#3 AR-1016-1

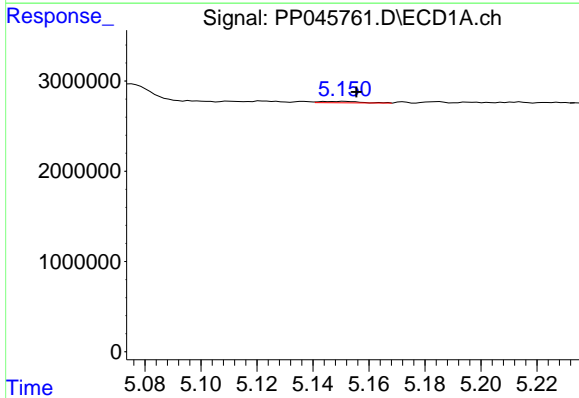
R.T.: 5.137 min  
 Delta R.T.: 0.004 min  
 Response: 51651  
 Conc: 0.72 ng/ml

Instrument :  
 ECD\_P  
 ClientSampleId :



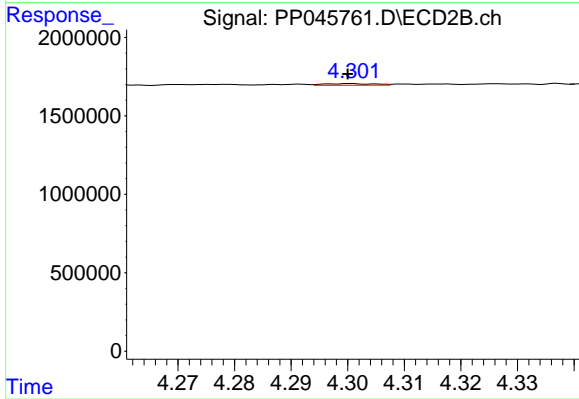
#3 AR-1016-1

R.T.: 4.279 min  
 Delta R.T.: -0.003 min  
 Response: 37057  
 Conc: 0.62 ng/ml



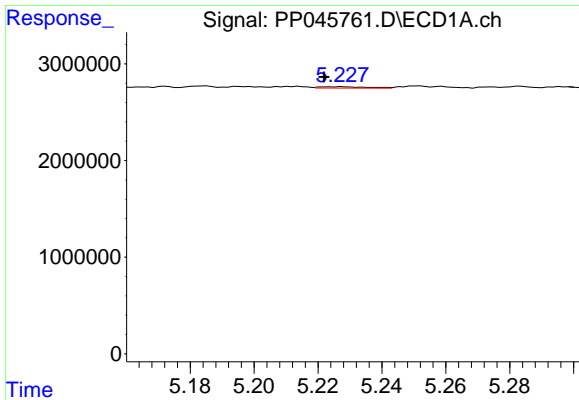
#4 AR-1016-2

R.T.: 5.151 min  
 Delta R.T.: -0.004 min  
 Response: 158319  
 Conc: 1.47 ng/ml



#4 AR-1016-2

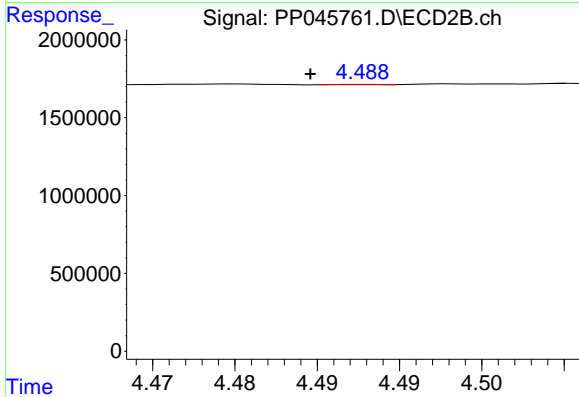
R.T.: 4.301 min  
 Delta R.T.: 0.000 min  
 Response: 62076  
 Conc: 0.74 ng/ml



#5 AR-1016-3

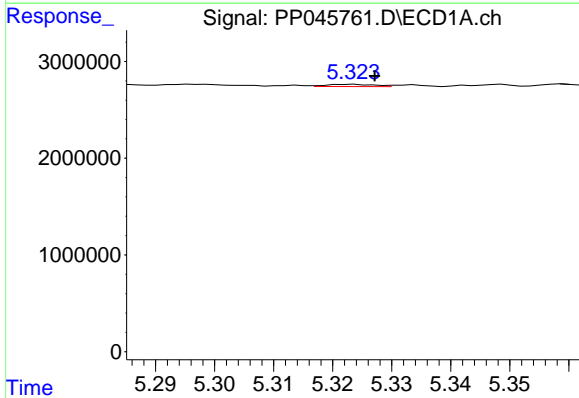
R.T.: 5.228 min  
 Delta R.T.: 0.006 min  
 Response: 145145  
 Conc: 2.21 ng/ml

Instrument :  
 ECD\_P  
 ClientSampleId :



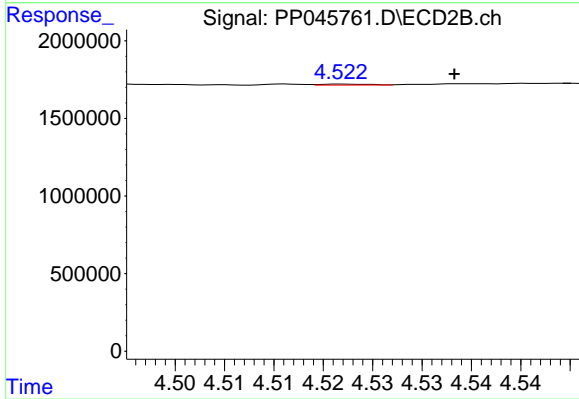
#5 AR-1016-3

R.T.: 4.488 min  
 Delta R.T.: 0.003 min  
 Response: 4210  
 Conc: 0.09 ng/ml



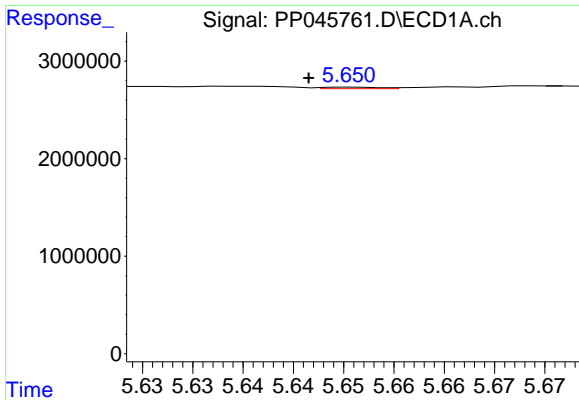
#6 AR-1016-4

R.T.: 5.323 min  
 Delta R.T.: -0.004 min  
 Response: 128713  
 Conc: 2.35 ng/ml



#6 AR-1016-4

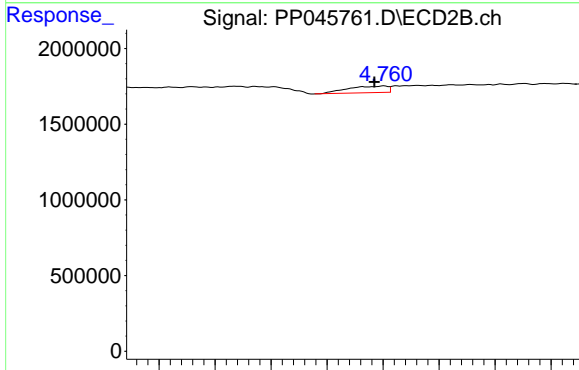
R.T.: 4.522 min  
 Delta R.T.: -0.011 min  
 Response: 19891  
 Conc: 0.54 ng/ml



#7 AR-1016-5

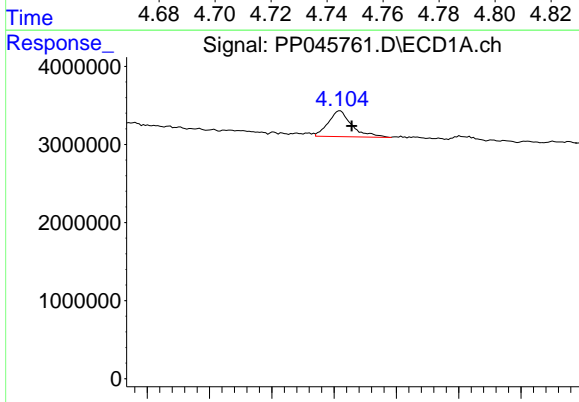
R.T.: 5.651 min  
 Delta R.T.: 0.004 min  
 Response: 58952  
 Conc: 1.14 ng/ml

Instrument :  
 ECD\_P  
 ClientSampleId :



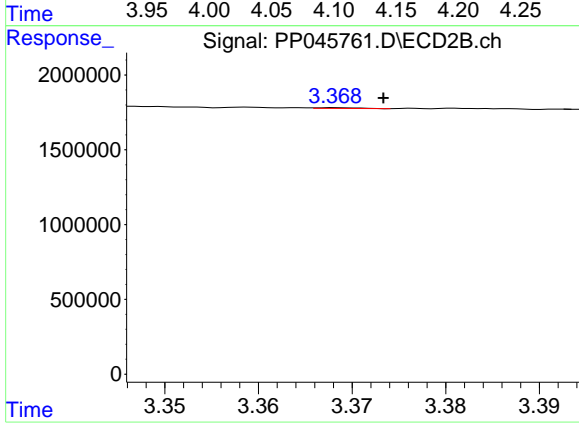
#7 AR-1016-5

R.T.: 4.760 min  
 Delta R.T.: 0.003 min  
 Response: 429522  
 Conc: 8.97 ng/ml



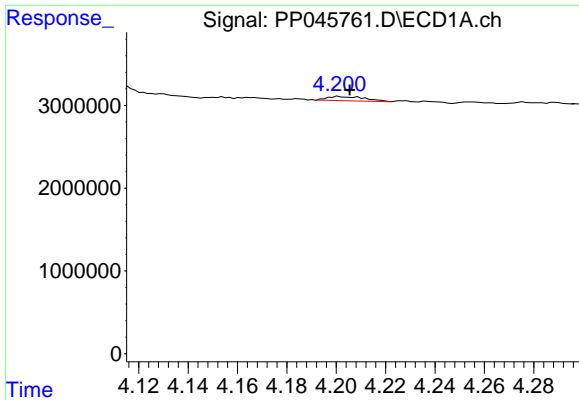
#8 AR-1221-1

R.T.: 4.105 min  
 Delta R.T.: -0.009 min  
 Response: 4348843  
 Conc: 173.19 ng/ml



#8 AR-1221-1

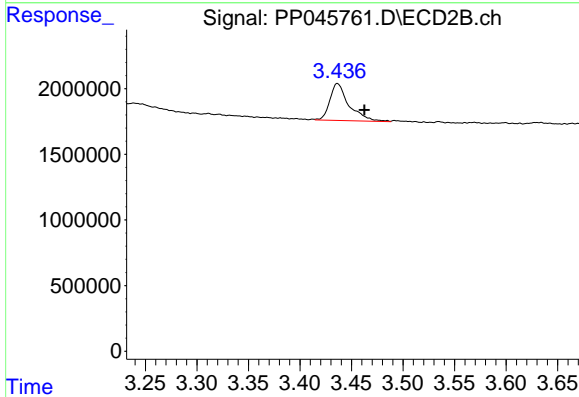
R.T.: 3.368 min  
 Delta R.T.: -0.005 min  
 Response: 16229  
 Conc: 0.78 ng/ml



#9 AR-1221-2

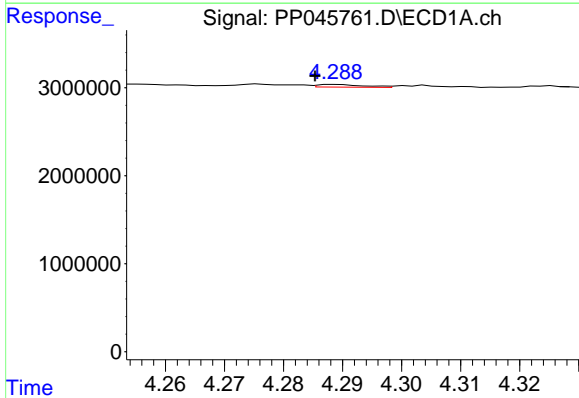
R.T.: 4.201 min  
 Delta R.T.: -0.004 min  
 Response: 543030  
 Conc: 28.32 ng/ml

Instrument :  
 ECD\_P  
 ClientSampleId :



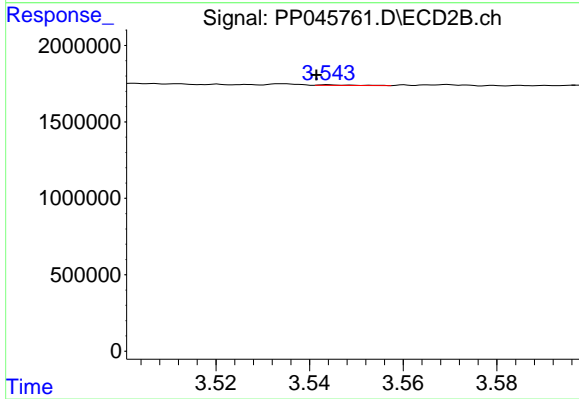
#9 AR-1221-2

R.T.: 3.436 min  
 Delta R.T.: -0.026 min  
 Response: 3623491  
 Conc: 228.87 ng/ml



#10 AR-1221-3

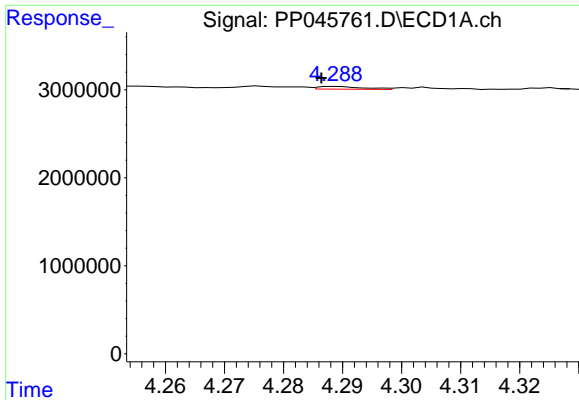
R.T.: 4.289 min  
 Delta R.T.: 0.003 min  
 Response: 168949  
 Conc: 2.81 ng/ml



#10 AR-1221-3

R.T.: 3.544 min  
 Delta R.T.: 0.002 min  
 Response: 20416  
 Conc: 0.44 ng/ml

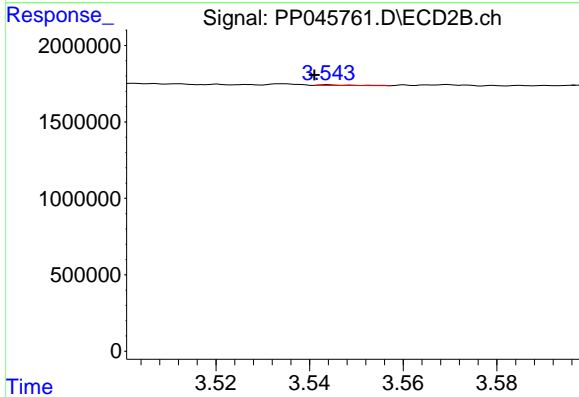




#11 AR-1232-1

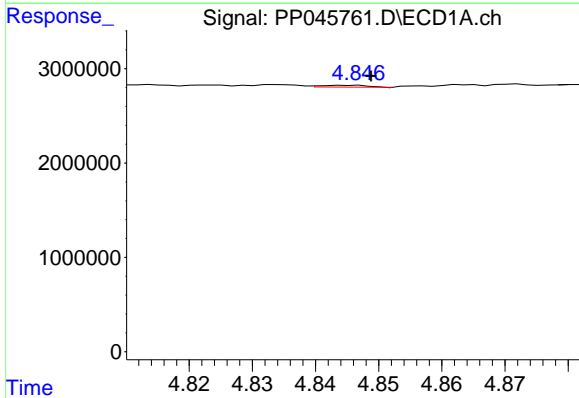
R.T.: 4.289 min  
 Delta R.T.: 0.002 min  
 Response: 168949  
 Conc: 3.43 ng/ml

Instrument :  
 ECD\_P  
 ClientSampleId :



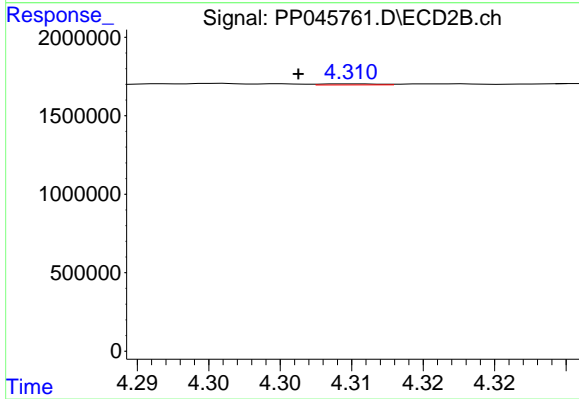
#11 AR-1232-1

R.T.: 3.544 min  
 Delta R.T.: 0.003 min  
 Response: 20416  
 Conc: 0.56 ng/ml



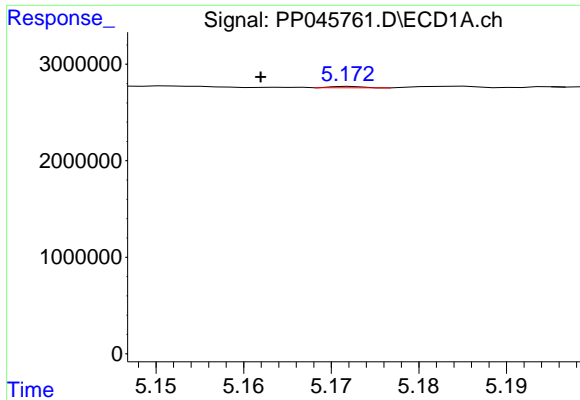
#12 AR-1232-2

R.T.: 4.847 min  
 Delta R.T.: -0.002 min  
 Response: 97480  
 Conc: 4.42 ng/ml



#12 AR-1232-2

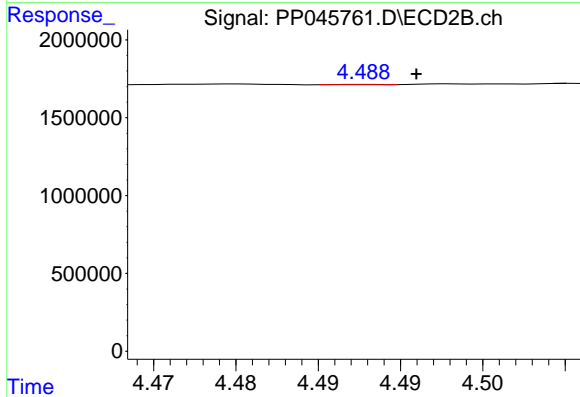
R.T.: 4.310 min  
 Delta R.T.: 0.004 min  
 Response: 19653  
 Conc: 0.58 ng/ml



#13 AR-1232-3

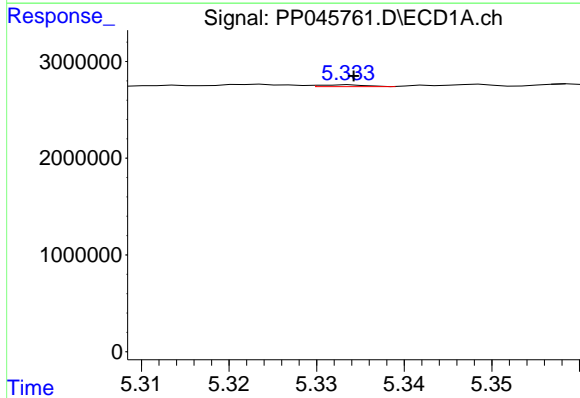
R.T.: 5.172 min  
 Delta R.T.: 0.010 min  
 Response: 38082  
 Conc: 0.88 ng/ml

Instrument :  
 ECD\_P  
 ClientSampleId :



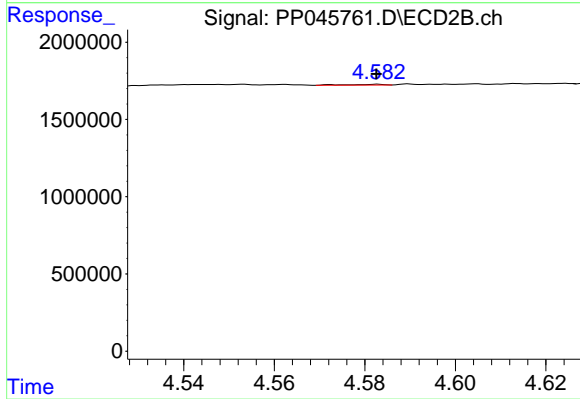
#13 AR-1232-3

R.T.: 4.488 min  
 Delta R.T.: -0.003 min  
 Response: 4210  
 Conc: 0.23 ng/ml



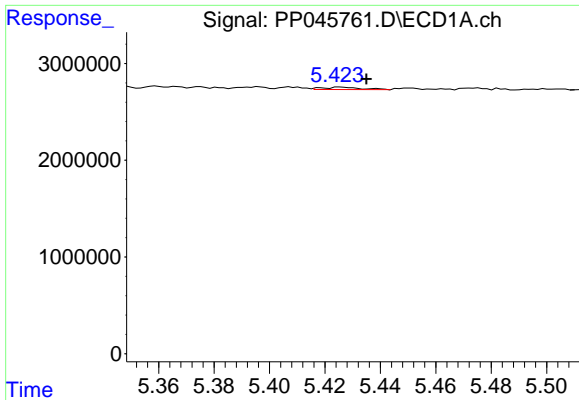
#14 AR-1232-4

R.T.: 5.334 min  
 Delta R.T.: 0.000 min  
 Response: 70129  
 Conc: 3.21 ng/ml



#14 AR-1232-4

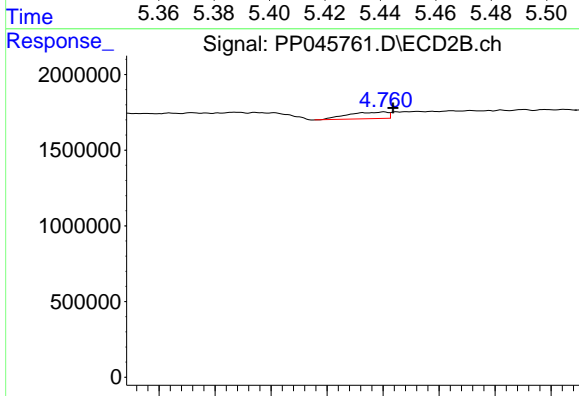
R.T.: 4.583 min  
 Delta R.T.: 0.000 min  
 Response: 24645  
 Conc: 1.50 ng/ml



#15 AR-1232-5

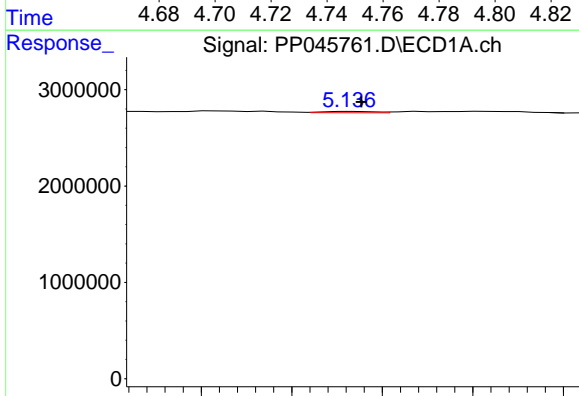
R.T.: 5.426 min  
 Delta R.T.: -0.009 min  
 Response: 233424  
 Conc: 14.66 ng/ml

Instrument :  
 ECD\_P  
 ClientSampleId :



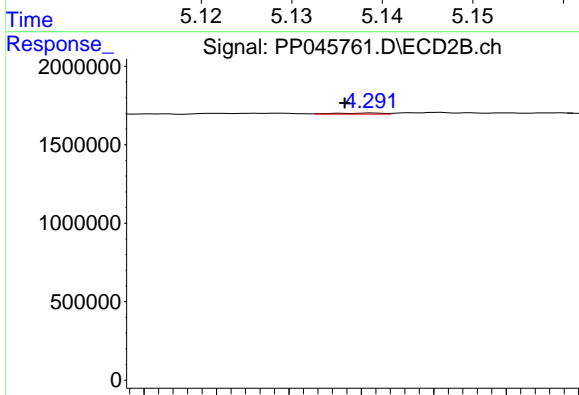
#15 AR-1232-5

R.T.: 4.760 min  
 Delta R.T.: -0.003 min  
 Response: 429522  
 Conc: 22.99 ng/ml



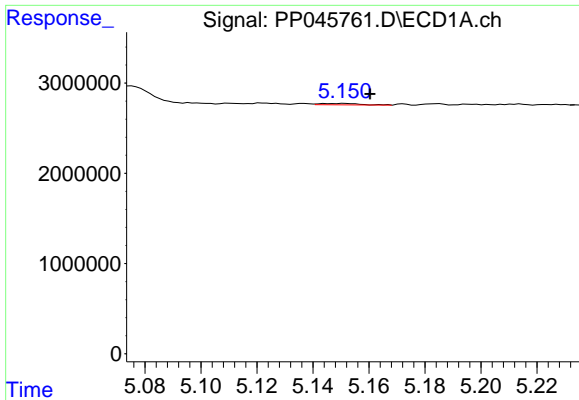
#16 AR-1242-1

R.T.: 5.137 min  
 Delta R.T.: 0.000 min  
 Response: 51651  
 Conc: 0.89 ng/ml



#16 AR-1242-1

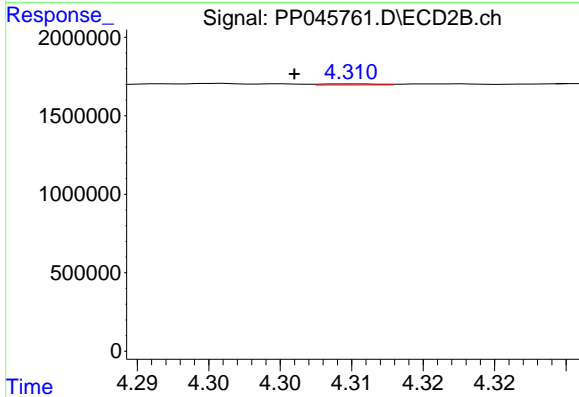
R.T.: 4.292 min  
 Delta R.T.: 0.004 min  
 Response: 33235  
 Conc: 0.68 ng/ml



#17 AR-1242-2

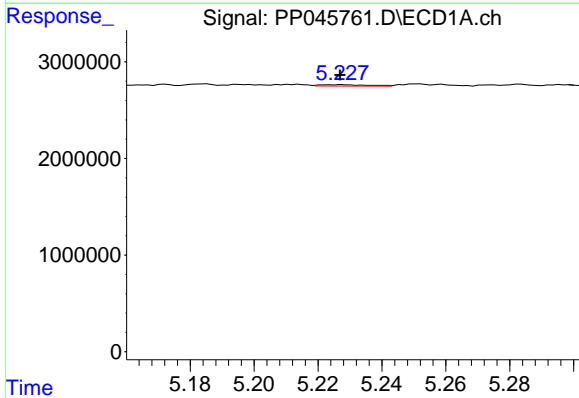
R.T.: 5.151 min  
 Delta R.T.: -0.009 min  
 Response: 158319  
 Conc: 1.82 ng/ml

Instrument :  
 ECD\_P  
 ClientSampleId :



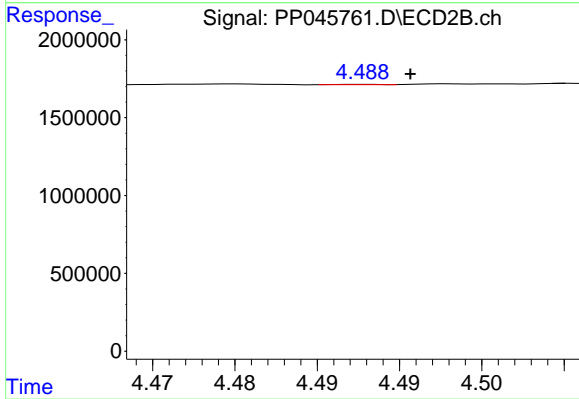
#17 AR-1242-2

R.T.: 4.310 min  
 Delta R.T.: 0.004 min  
 Response: 19653  
 Conc: 0.29 ng/ml



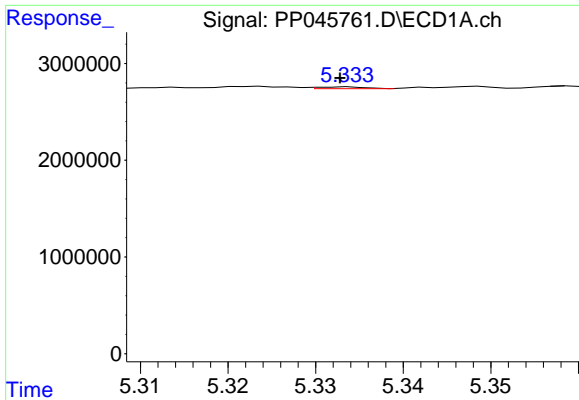
#18 AR-1242-3

R.T.: 5.228 min  
 Delta R.T.: 0.000 min  
 Response: 145145  
 Conc: 2.68 ng/ml



#18 AR-1242-3

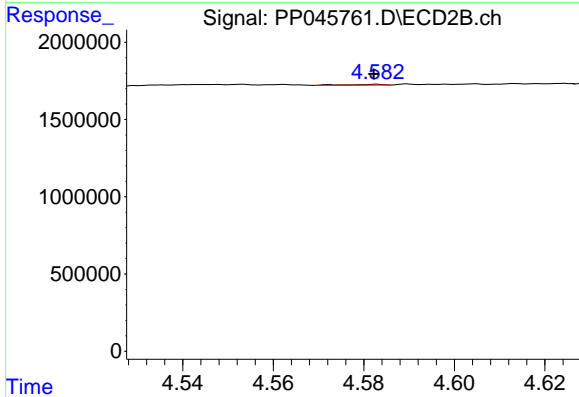
R.T.: 4.488 min  
 Delta R.T.: -0.003 min  
 Response: 4210  
 Conc: 0.11 ng/ml



#19 AR-1242-4

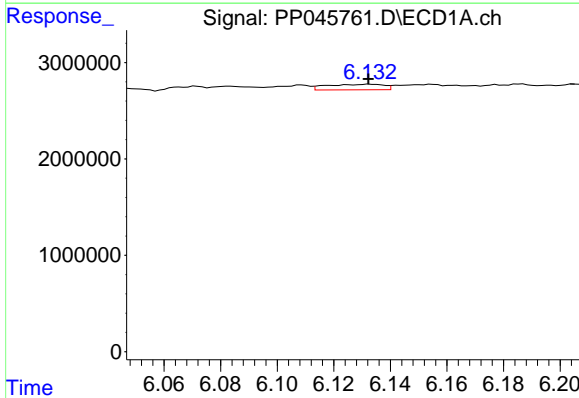
R.T.: 5.334 min  
 Delta R.T.: 0.000 min  
 Response: 70129  
 Conc: 1.55 ng/ml

Instrument :  
 ECD\_P  
 ClientSampleId :



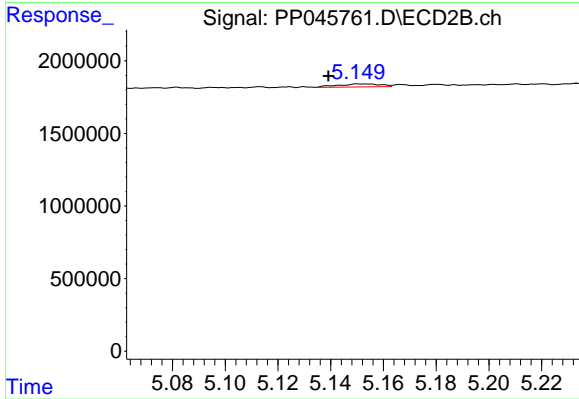
#19 AR-1242-4

R.T.: 4.583 min  
 Delta R.T.: 0.000 min  
 Response: 24645  
 Conc: 0.68 ng/ml



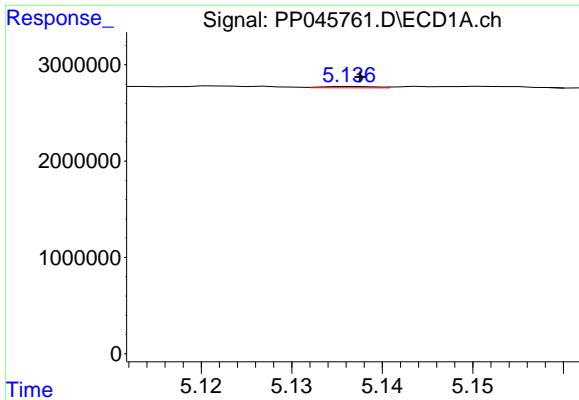
#20 AR-1242-5

R.T.: 6.133 min  
 Delta R.T.: 0.000 min  
 Response: 804183  
 Conc: 17.34 ng/ml



#20 AR-1242-5

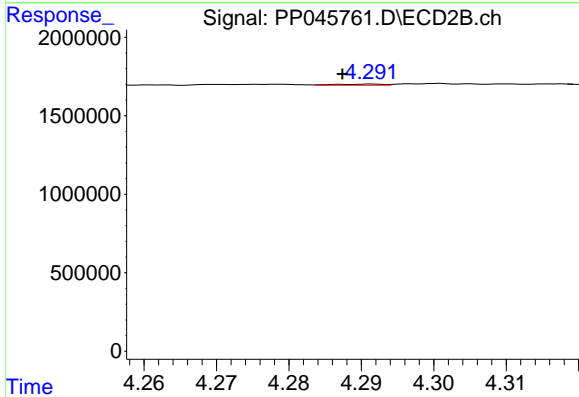
R.T.: 5.150 min  
 Delta R.T.: 0.011 min  
 Response: 228518  
 Conc: 4.81 ng/ml



#21 AR-1248-1

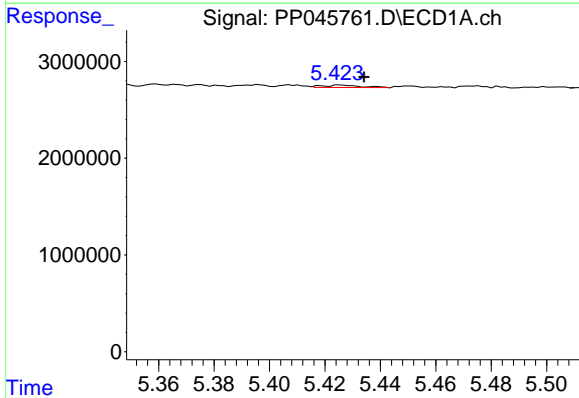
R.T.: 5.137 min  
 Delta R.T.: 0.000 min  
 Response: 51651  
 Conc: 1.13 ng/ml

Instrument :  
 ECD\_P  
 ClientSampleId :



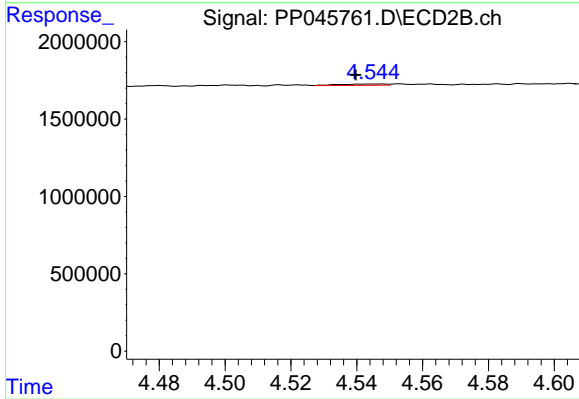
#21 AR-1248-1

R.T.: 4.292 min  
 Delta R.T.: 0.004 min  
 Response: 33235  
 Conc: 0.87 ng/ml



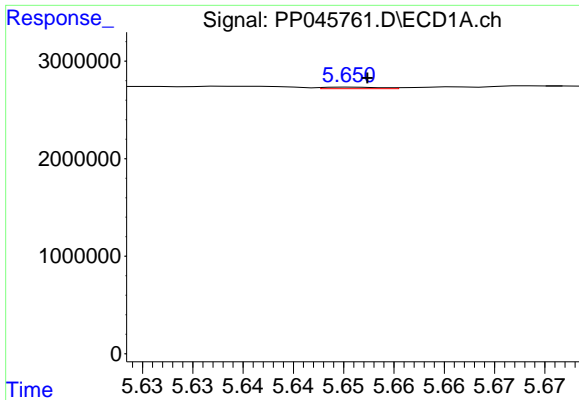
#22 AR-1248-2

R.T.: 5.426 min  
 Delta R.T.: -0.008 min  
 Response: 233424  
 Conc: 3.79 ng/ml



#22 AR-1248-2

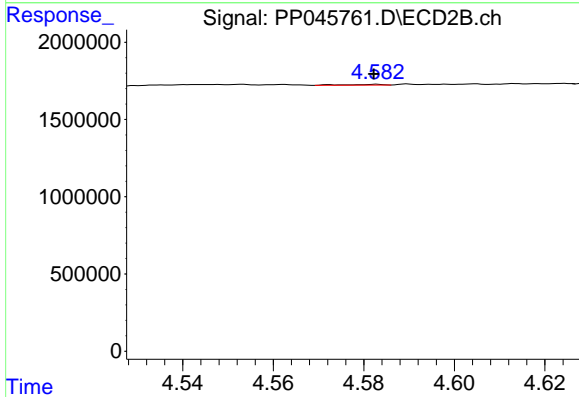
R.T.: 4.548 min  
 Delta R.T.: 0.008 min  
 Response: 88704  
 Conc: 1.72 ng/ml



#23 AR-1248-3

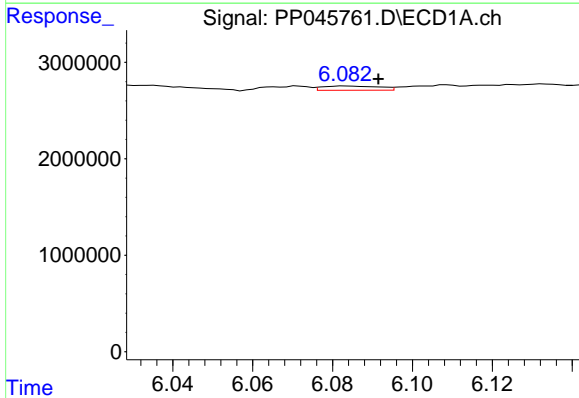
R.T.: 5.651 min  
 Delta R.T.: -0.001 min  
 Response: 58952  
 Conc: 0.82 ng/ml

Instrument :  
 ECD\_P  
 ClientSampleId :



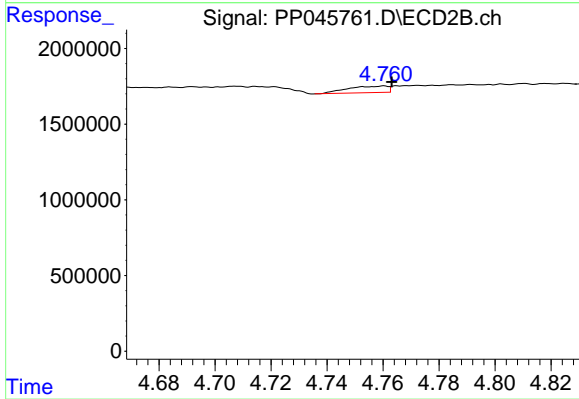
#23 AR-1248-3

R.T.: 4.583 min  
 Delta R.T.: 0.000 min  
 Response: 24645  
 Conc: 0.46 ng/ml



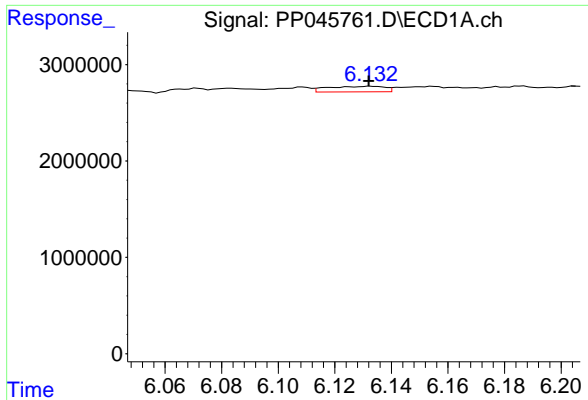
#24 AR-1248-4

R.T.: 6.083 min  
 Delta R.T.: -0.008 min  
 Response: 432962  
 Conc: 5.76 ng/ml



#24 AR-1248-4

R.T.: 4.760 min  
 Delta R.T.: -0.003 min  
 Response: 429522  
 Conc: 6.68 ng/ml

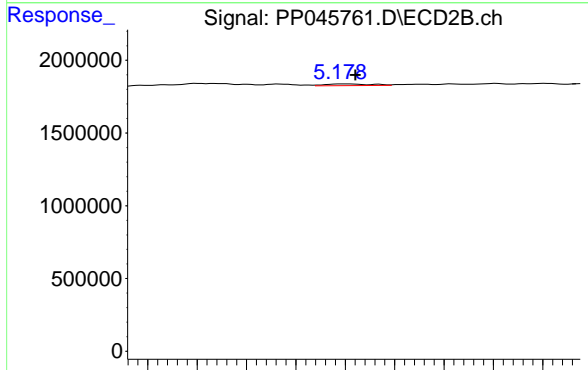


#25 AR-1248-5

R.T.: 6.133 min  
 Delta R.T.: 0.000 min  
 Response: 804183  
 Conc: 10.72 ng/ml

Instrument :  
 ECD\_P  
 ClientSampleId :

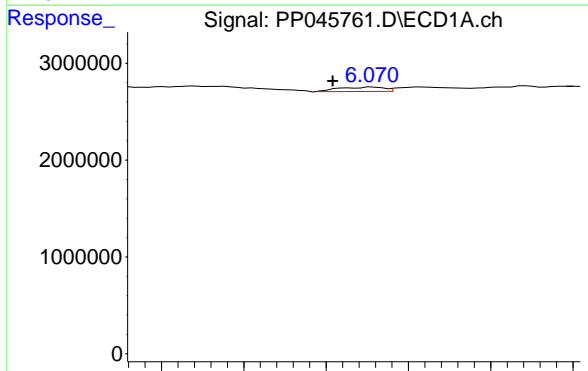
Time 6.06 6.08 6.10 6.12 6.14 6.16 6.18 6.20



#25 AR-1248-5

R.T.: 5.180 min  
 Delta R.T.: -0.002 min  
 Response: 75967  
 Conc: 1.17 ng/ml

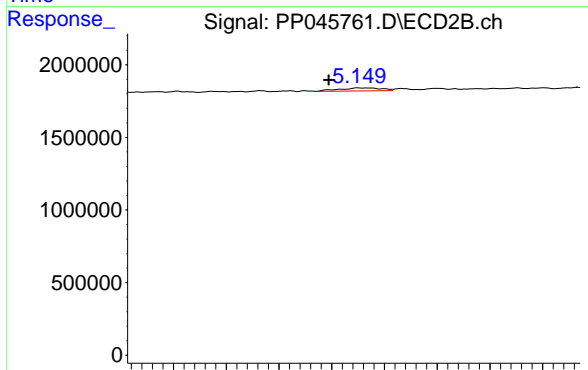
Time 5.14 5.15 5.16 5.17 5.18 5.19 5.20 5.21 5.22



#26 AR-1254-1

R.T.: 6.072 min  
 Delta R.T.: 0.010 min  
 Response: 352727  
 Conc: 4.95 ng/ml

Time 6.02 6.04 6.06 6.08 6.10

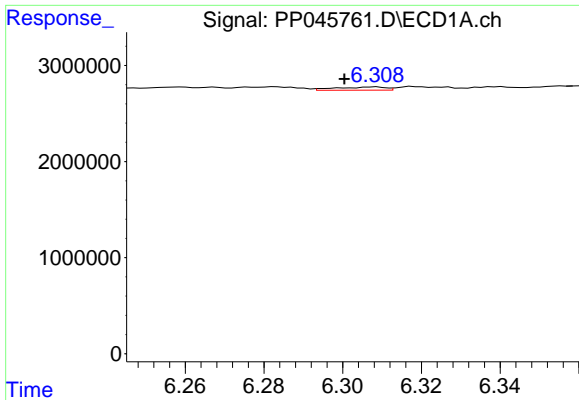


#26 AR-1254-1

R.T.: 5.150 min  
 Delta R.T.: 0.011 min  
 Response: 228518  
 Conc: 2.35 ng/ml

Time 5.08 5.10 5.12 5.14 5.16 5.18 5.20 5.22

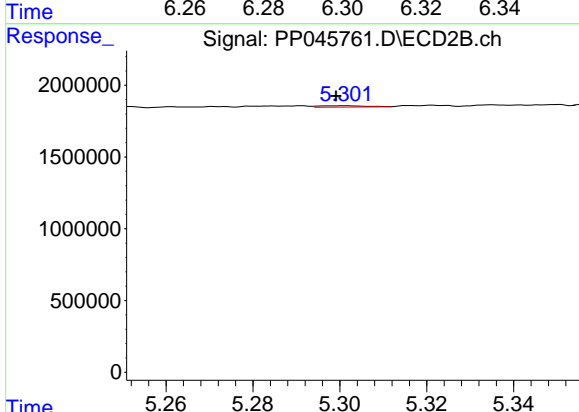




#27 AR-1254-2

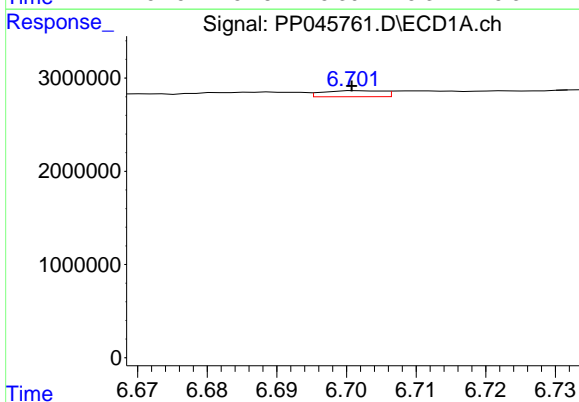
R.T.: 6.308 min  
 Delta R.T.: 0.008 min  
 Response: 292961  
 Conc: 2.71 ng/ml

Instrument :  
 ECD\_P  
 ClientSampleId :



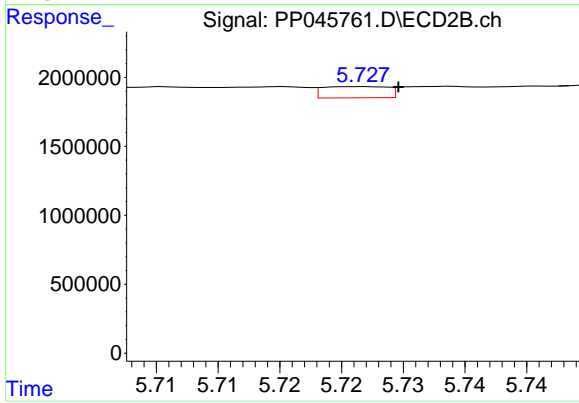
#27 AR-1254-2

R.T.: 5.301 min  
 Delta R.T.: 0.002 min  
 Response: 68971  
 Conc: 0.85 ng/ml



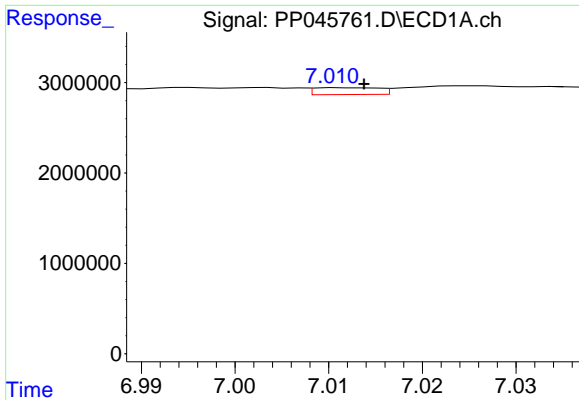
#28 AR-1254-3

R.T.: 6.702 min  
 Delta R.T.: 0.000 min  
 Response: 384035  
 Conc: 3.46 ng/ml



#28 AR-1254-3

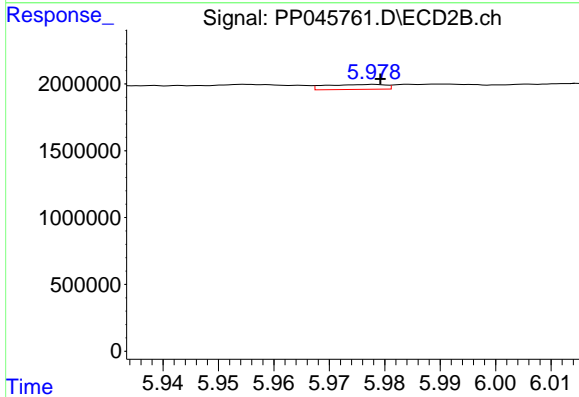
R.T.: 5.727 min  
 Delta R.T.: -0.003 min  
 Response: 296070  
 Conc: 2.39 ng/ml



#29 AR-1254-4

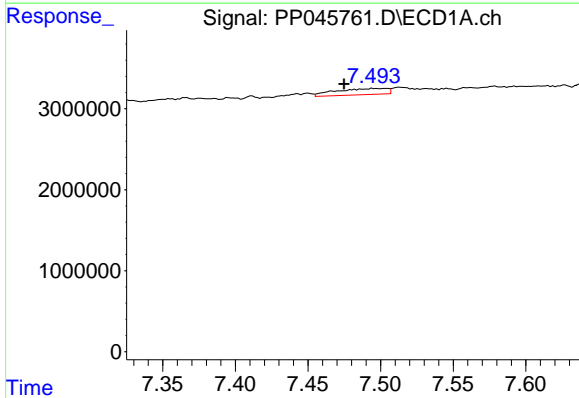
R.T.: 7.011 min  
 Delta R.T.: -0.003 min  
 Response: 361631  
 Conc: 4.50 ng/ml

Instrument :  
 ECD\_P  
 ClientSampleId :



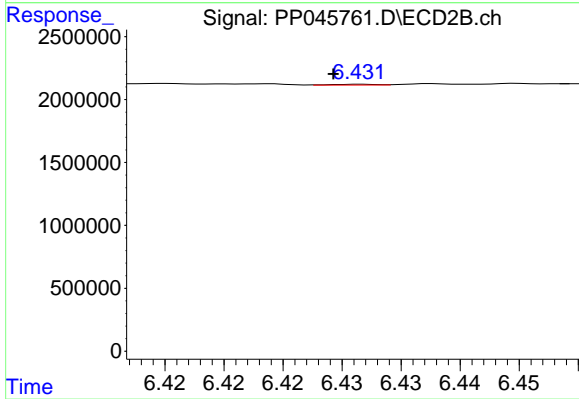
#29 AR-1254-4

R.T.: 5.978 min  
 Delta R.T.: -0.001 min  
 Response: 275595  
 Conc: 3.44 ng/ml



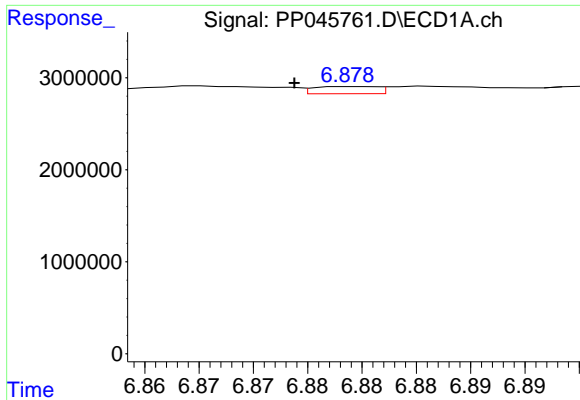
#30 AR-1254-5

R.T.: 7.495 min  
 Delta R.T.: 0.020 min  
 Response: 1855026  
 Conc: 23.20 ng/ml



#30 AR-1254-5

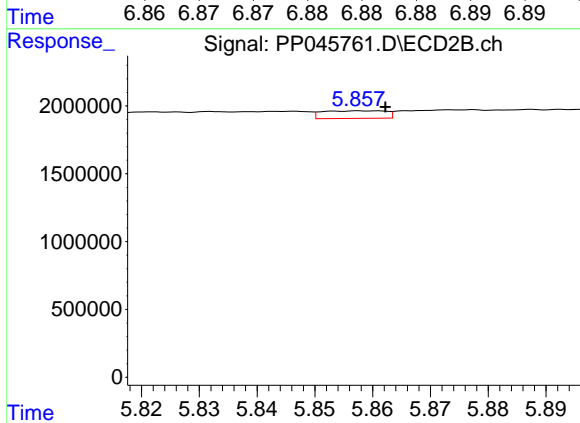
R.T.: 6.432 min  
 Delta R.T.: 0.002 min  
 Response: 16956  
 Conc: 0.16 ng/ml



#31 AR-1260-1

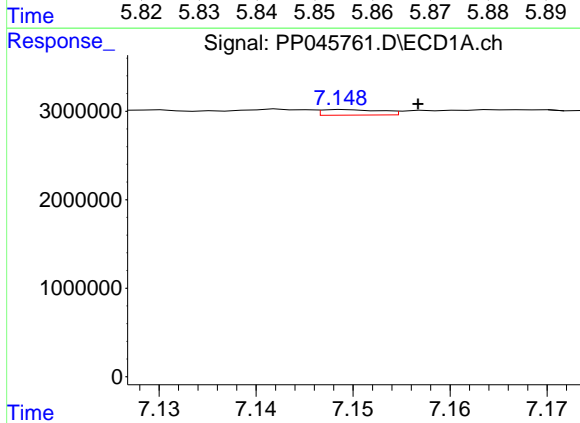
R.T.: 6.880 min  
 Delta R.T.: 0.006 min  
 Response: 318153  
 Conc: 3.99 ng/ml

Instrument :  
 ECD\_P  
 ClientSampleId :



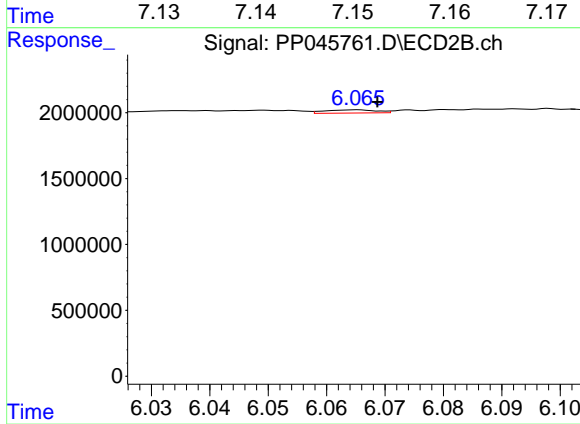
#31 AR-1260-1

R.T.: 5.858 min  
 Delta R.T.: -0.004 min  
 Response: 426002  
 Conc: 5.14 ng/ml



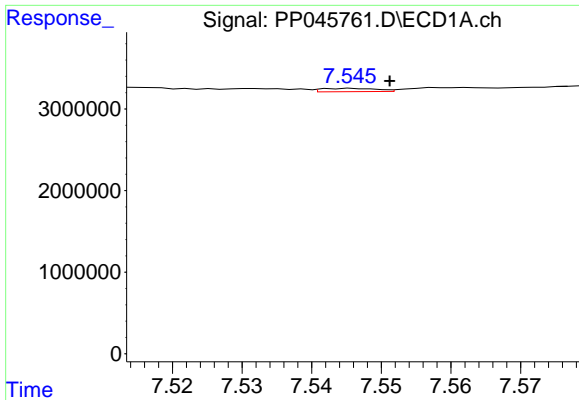
#32 AR-1260-2

R.T.: 7.149 min  
 Delta R.T.: -0.008 min  
 Response: 264896  
 Conc: 2.94 ng/ml



#32 AR-1260-2

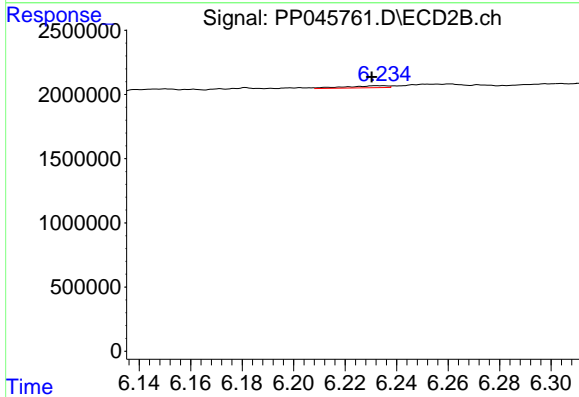
R.T.: 6.065 min  
 Delta R.T.: -0.003 min  
 Response: 147769  
 Conc: 1.52 ng/ml



#33 AR-1260-3

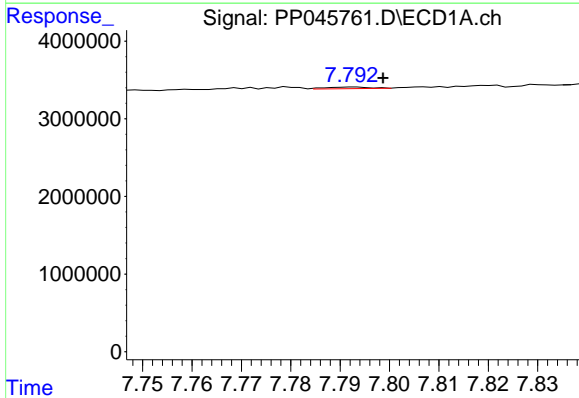
R.T.: 7.546 min  
 Delta R.T.: -0.005 min  
 Response: 221299  
 Conc: 3.19 ng/ml

Instrument :  
 ECD\_P  
 ClientSampleId :



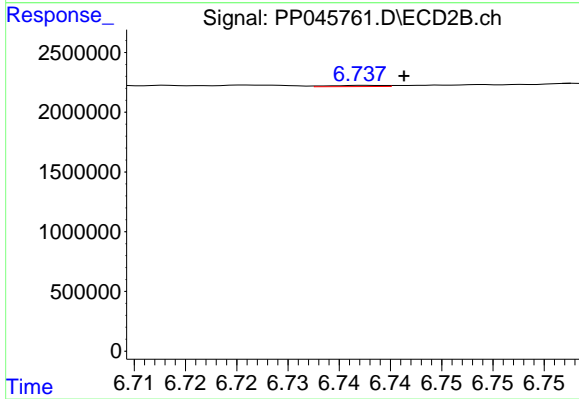
#33 AR-1260-3

R.T.: 6.235 min  
 Delta R.T.: 0.004 min  
 Response: 171122  
 Conc: 1.85 ng/ml



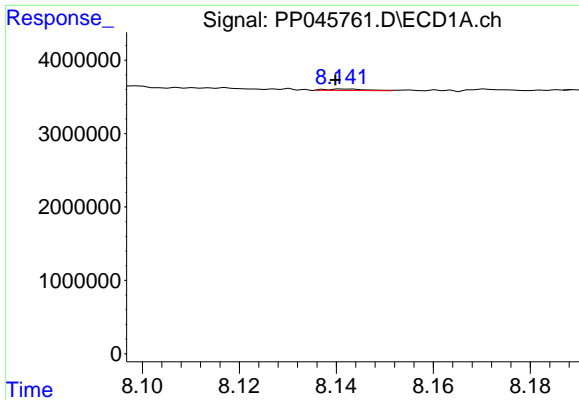
#34 AR-1260-4

R.T.: 7.793 min  
 Delta R.T.: -0.006 min  
 Response: 131252  
 Conc: 1.70 ng/ml



#34 AR-1260-4

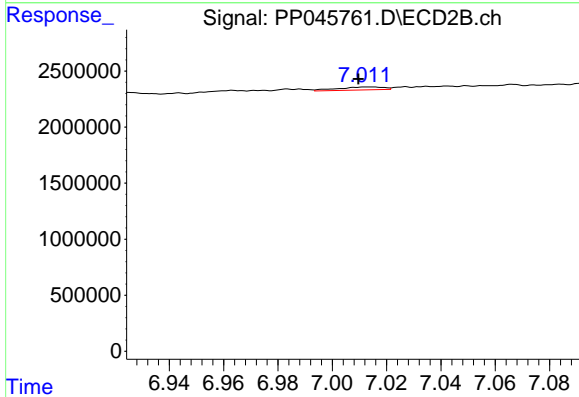
R.T.: 6.738 min  
 Delta R.T.: -0.004 min  
 Response: 35527  
 Conc: 0.46 ng/ml



#35 AR-1260-5

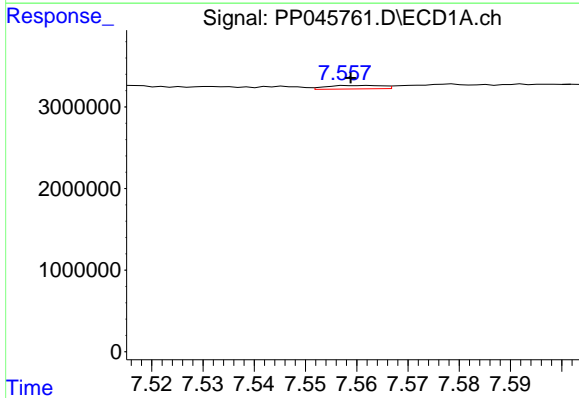
R.T.: 8.142 min  
 Delta R.T.: 0.002 min  
 Response: 123016  
 Conc: 0.87 ng/ml

Instrument :  
 ECD\_P  
 ClientSampleId :



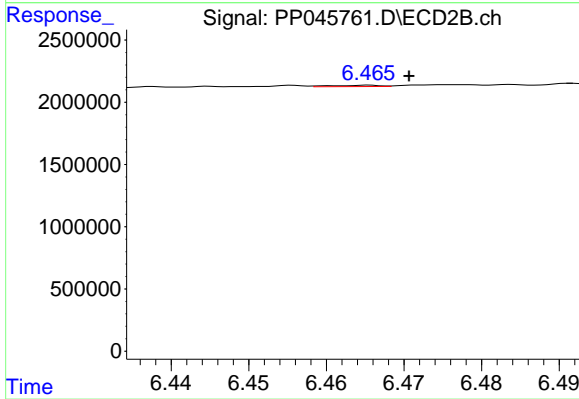
#35 AR-1260-5

R.T.: 7.015 min  
 Delta R.T.: 0.005 min  
 Response: 318324  
 Conc: 1.80 ng/ml



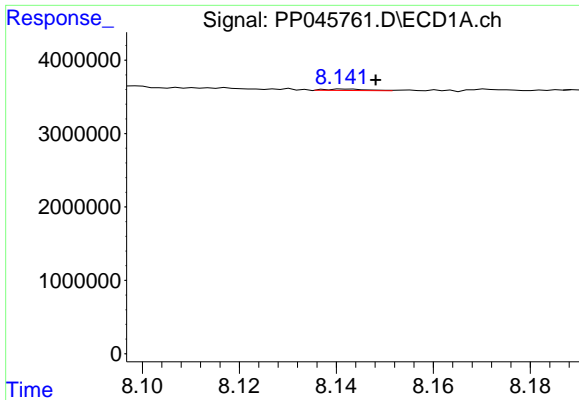
#36 AR-1262-1

R.T.: 7.562 min  
 Delta R.T.: 0.004 min  
 Response: 311457  
 Conc: 3.09 ng/ml



#36 AR-1262-1

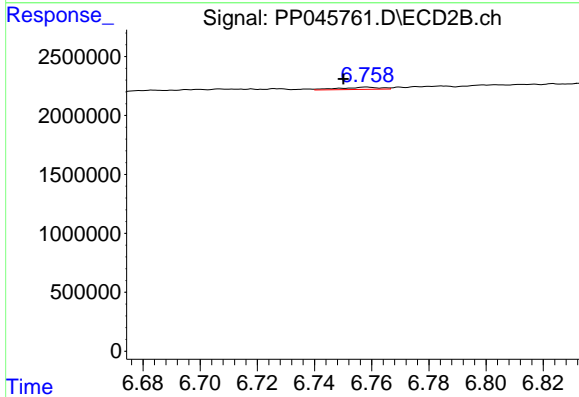
R.T.: 6.466 min  
 Delta R.T.: -0.005 min  
 Response: 47540  
 Conc: 0.42 ng/ml



#37 AR-1262-2

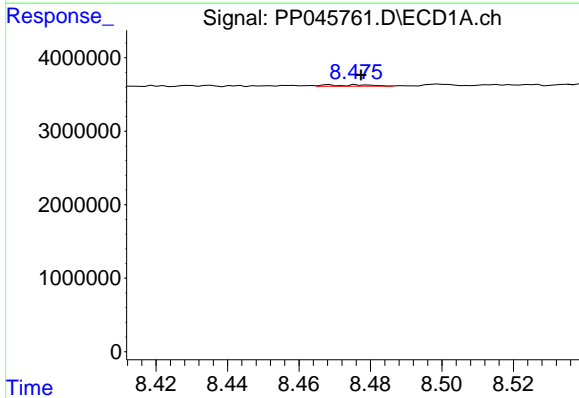
R.T.: 8.142 min  
 Delta R.T.: -0.006 min  
 Response: 123016  
 Conc: 0.73 ng/ml

Instrument :  
 ECD\_P  
 ClientSampleId :



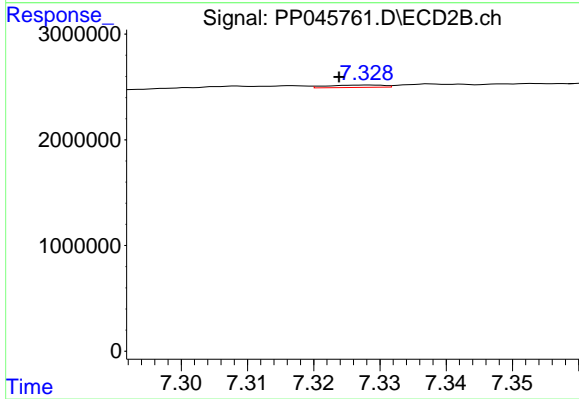
#37 AR-1262-2

R.T.: 6.758 min  
 Delta R.T.: 0.008 min  
 Response: 186109  
 Conc: 1.84 ng/ml



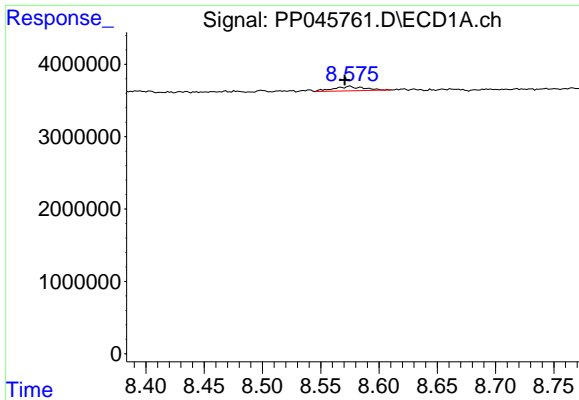
#38 AR-1262-3

R.T.: 8.469 min  
 Delta R.T.: -0.009 min  
 Response: 155306  
 Conc: 1.34 ng/ml



#38 AR-1262-3

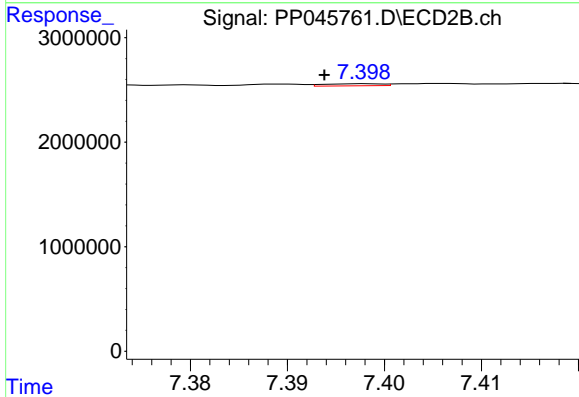
R.T.: 7.328 min  
 Delta R.T.: 0.005 min  
 Response: 128815  
 Conc: 1.59 ng/ml



#39 AR-1262-4

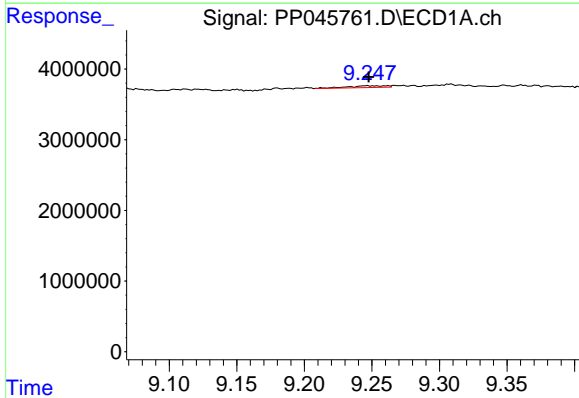
R.T.: 8.575 min  
 Delta R.T.: 0.005 min  
 Response: 1099757  
 Conc: 17.99 ng/ml

Instrument :  
 ECD\_P  
 ClientSampleId :



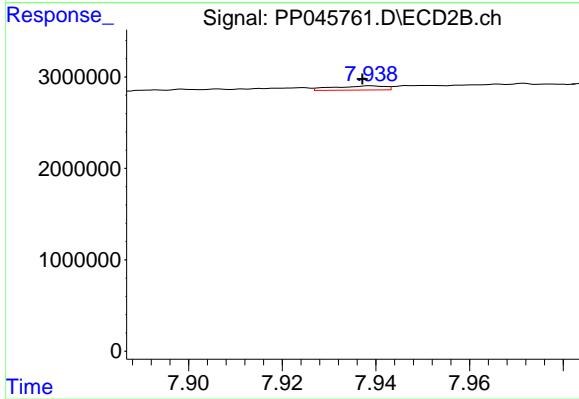
#39 AR-1262-4

R.T.: 7.398 min  
 Delta R.T.: 0.004 min  
 Response: 82745  
 Conc: 0.56 ng/ml



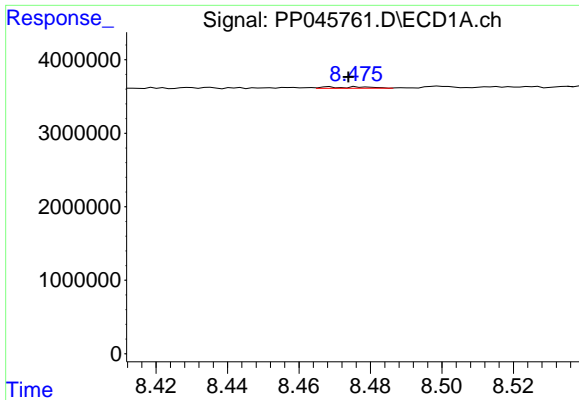
#40 AR-1262-5

R.T.: 9.247 min  
 Delta R.T.: -0.001 min  
 Response: 482650  
 Conc: 7.90 ng/ml



#40 AR-1262-5

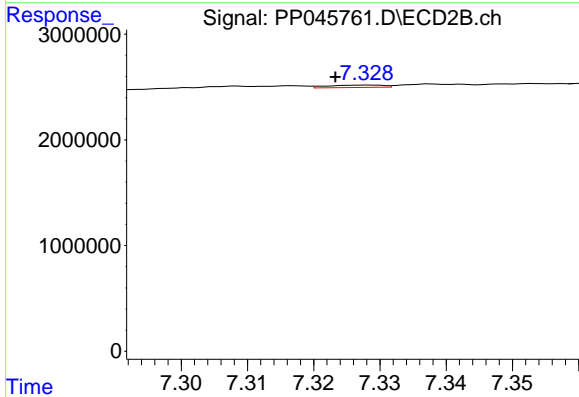
R.T.: 7.939 min  
 Delta R.T.: 0.002 min  
 Response: 348187  
 Conc: 4.78 ng/ml



#41 AR-1268-1

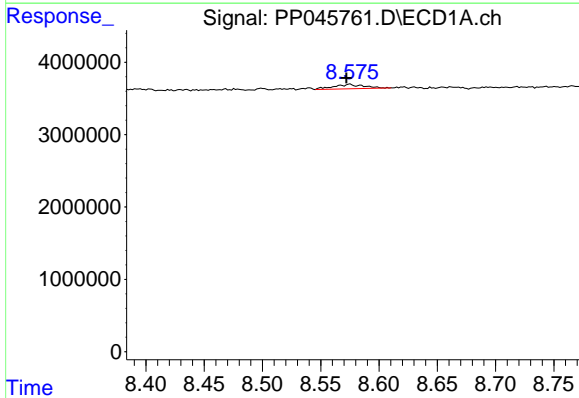
R.T.: 8.469 min  
 Delta R.T.: -0.005 min  
 Response: 155306  
 Conc: 0.77 ng/ml

Instrument :  
 ECD\_P  
 ClientSampleId :



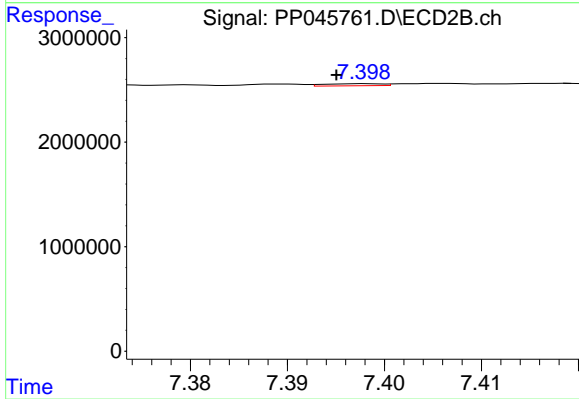
#41 AR-1268-1

R.T.: 7.328 min  
 Delta R.T.: 0.005 min  
 Response: 128815  
 Conc: 0.58 ng/ml



#42 AR-1268-2

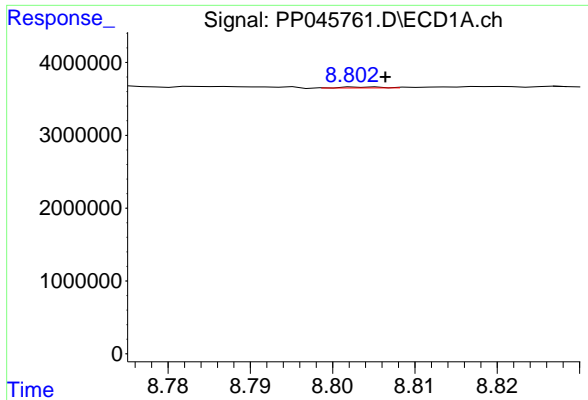
R.T.: 8.575 min  
 Delta R.T.: 0.003 min  
 Response: 1099757  
 Conc: 5.88 ng/ml



#42 AR-1268-2

R.T.: 7.398 min  
 Delta R.T.: 0.003 min  
 Response: 82745  
 Conc: 0.41 ng/ml

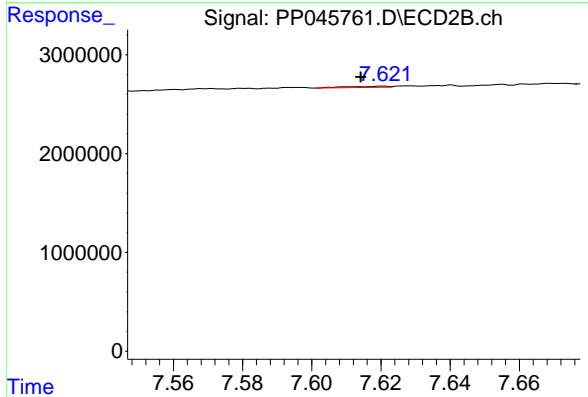




#43 AR-1268-3

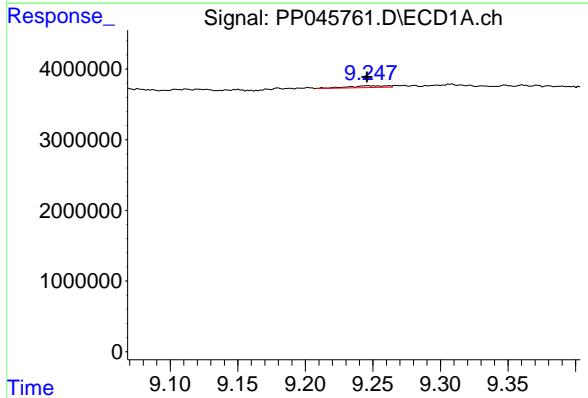
R.T.: 8.804 min  
 Delta R.T.: -0.002 min  
 Response: 45298  
 Conc: 0.27 ng/ml

Instrument :  
 ECD\_P  
 ClientSampleId :



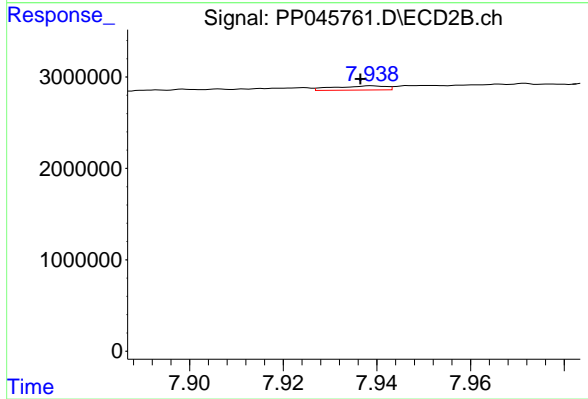
#43 AR-1268-3

R.T.: 7.621 min  
 Delta R.T.: 0.006 min  
 Response: 93565  
 Conc: 0.55 ng/ml



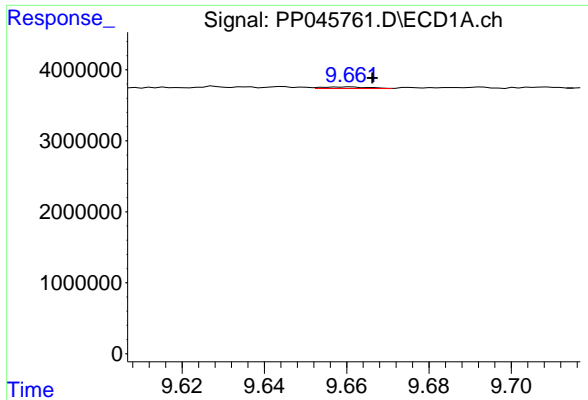
#44 AR-1268-4

R.T.: 9.247 min  
 Delta R.T.: 0.000 min  
 Response: 482650  
 Conc: 7.21 ng/ml



#44 AR-1268-4

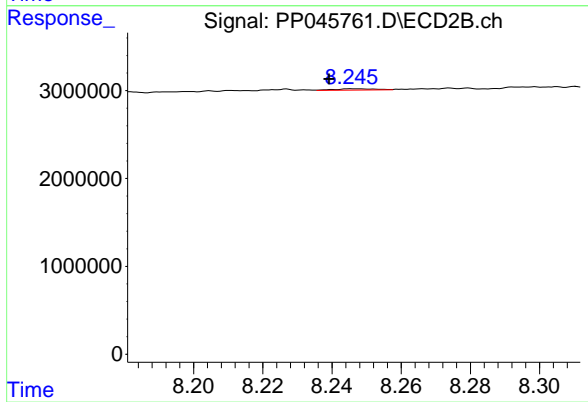
R.T.: 7.939 min  
 Delta R.T.: 0.003 min  
 Response: 348187  
 Conc: 4.40 ng/ml



#45 AR-1268-5

R.T.: 9.661 min  
Delta R.T.: -0.005 min  
Response: 170151  
Conc: 0.33 ng/ml

Instrument :  
ECD\_P  
ClientSampleId :



#45 AR-1268-5

R.T.: 8.245 min  
Delta R.T.: 0.006 min  
Response: 122500  
Conc: 0.23 ng/ml