

Data Path : Z:\pestpcbsrv\HPCHEM1\ECD_P\Data\PP040822\
 Data File : PP045777.D
 Signal(s) : Signal #1: ECD1A.ch Signal #2: ECD2B.ch
 Acq On : 10 Apr 2022 02:44
 Operator : YP\AJ
 Sample : N2336-02
 Misc :
 ALS Vial : 72 Sample Multiplier: 1

Instrument :
 ECD_P
ClientSampleId :
 C150-CU

Manual Integrations
APPROVED
 Reviewed By :Yogesh Patel 04/11/2022
 Supervised By :mohammad ahmed 04/11/2022

Integration File signal 1: autoint1.e
 Integration File signal 2: autoint2.e
 Quant Time: Apr 11 02:24:18 2022
 Quant Method : Z:\pestpcbsrv\HPCHEM1\ECD_P\methods\PP033022.M
 Quant Title : GC EXTRACTABLES
 QLast Update : Sat Apr 09 07:55:16 2022
 Response via : Initial Calibration
 Integrator: ChemStation

Volume Inj. : 2 µl
 Signal #1 Phase : ZB-MR2 Signal #2 Phase: ZB-MR2
 Signal #1 Info : 30Mx0.32mmx 0.50µ Signal #2 Info : 30M x 0.32mm x 0.25µm

Compound	RT#1	RT#2	Resp#1	Resp#2	ng/ml	ng/ml

System Monitoring Compounds						
1) SA Tetrachlo...	3.882	3.142	51667028	36370494	21.414	22.985
2) SA Decachlor...	9.984	8.482	29264002	25685188	20.424m	16.938
Target Compounds						
31) L7 AR-1260-1	6.871	5.860	14198851	14399632	178.040	173.711
32) L7 AR-1260-2	7.152	6.066	21679637	18412796	240.594	188.988
33) L7 AR-1260-3	7.550	6.227	9170335	14019052	132.373	151.556
34) L7 AR-1260-4	7.796	6.739	11095744	9527749	143.828m	124.355
35) L7 AR-1260-5	8.136	7.006	22450244	25132452	159.008m	142.077

(f)=RT Delta > 1/2 Window (#)=Amounts differ by > 25% (m)=manual int.

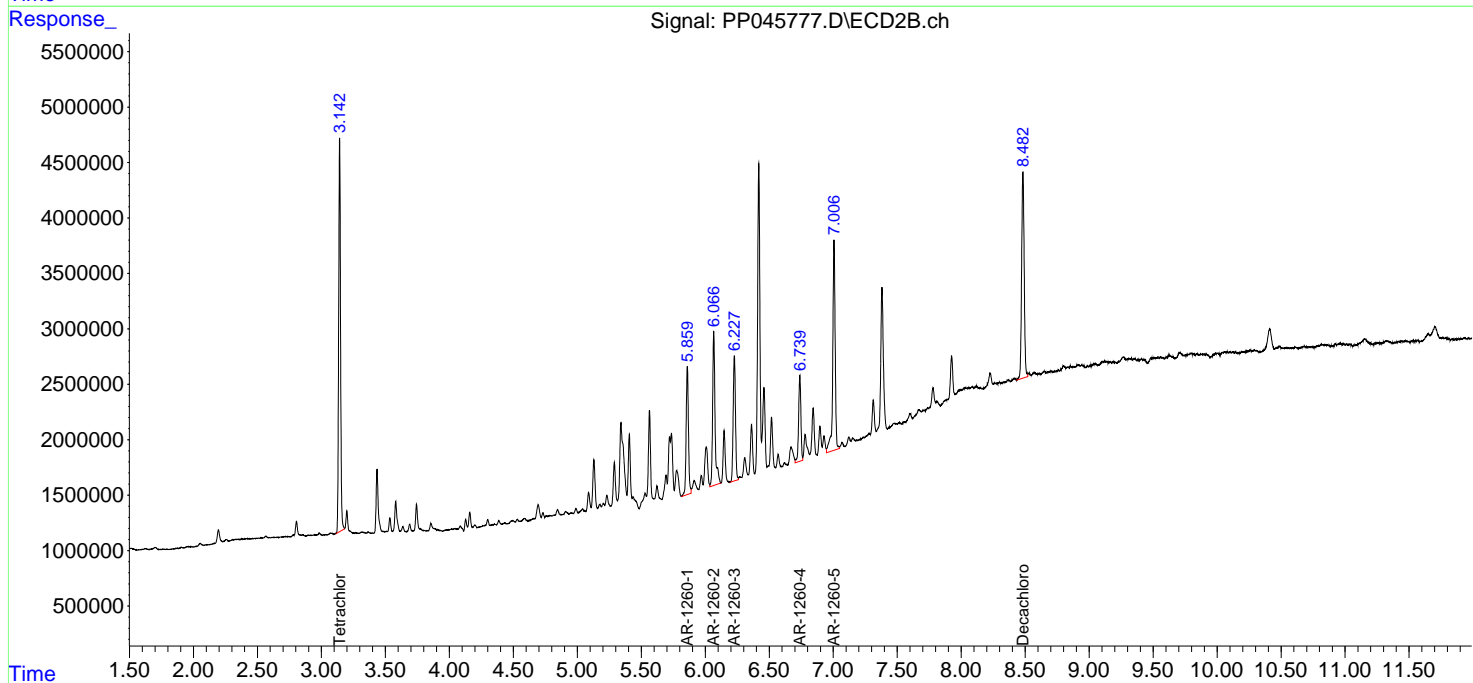
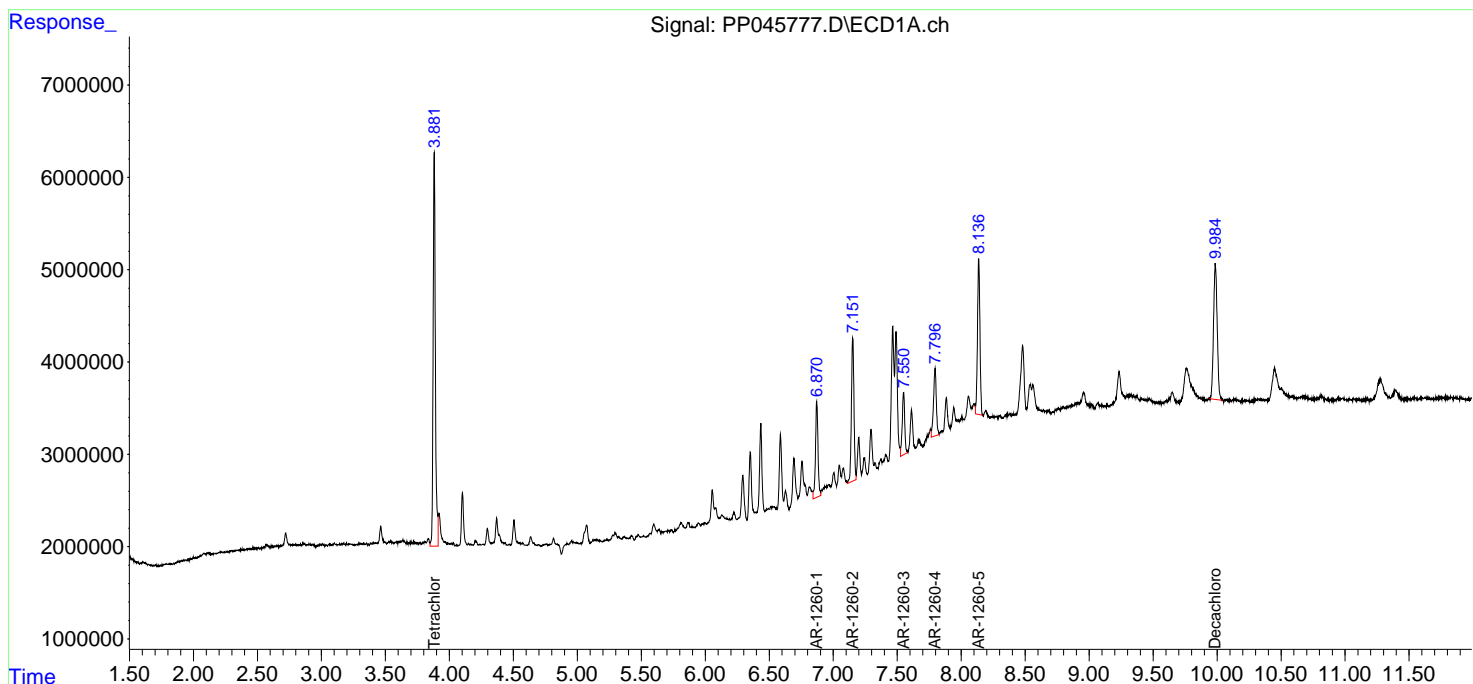
Data Path : Z:\pestpcbsrv\HPCHEM1\ECD_P\Data\PP040822\
 Data File : PP045777.D
 Signal(s) : Signal #1: ECD1A.ch Signal #2: ECD2B.ch
 Acq On : 10 Apr 2022 02:44
 Operator : YP\AJ
 Sample : N2336-02
 Misc :
 ALS Vial : 72 Sample Multiplier: 1

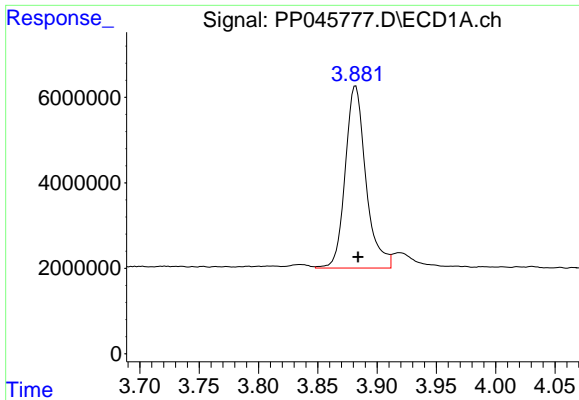
Instrument :
 ECD_P
ClientSampleId :
 C150-CU

Manual Integrations
APPROVED
 Reviewed By :Yogesh Patel 04/11/2022
 Supervised By :mohammad ahmed 04/11/2022

Integration File signal 1: autoint1.e
 Integration File signal 2: autoint2.e
 Quant Time: Apr 11 02:24:18 2022
 Quant Method : Z:\pestpcbsrv\HPCHEM1\ECD_P\methods\PP033022.M
 Quant Title : GC EXTRACTABLES
 QLast Update : Sat Apr 09 07:55:16 2022
 Response via : Initial Calibration
 Integrator: ChemStation

Volume Inj. : 2 µl
 Signal #1 Phase : ZB-MR1 Signal #2 Phase: ZB-MR2
 Signal #1 Info : 30Mx0.32mmx 0.50µ Signal #2 Info : 30M x 0.32mm x 0.25µm





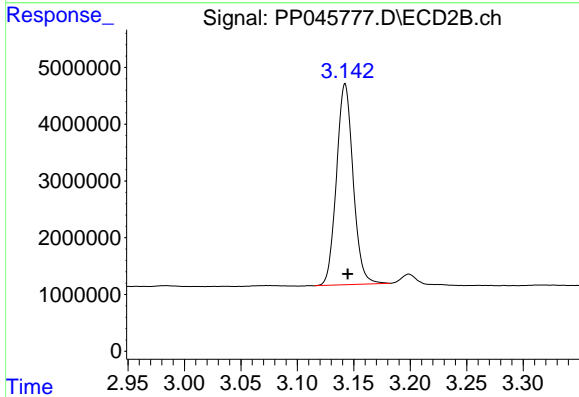
#1 Tetrachloro-m-xylene

R.T.: 3.882 min
 Delta R.T.: -0.002 min
 Response: 51667028
 Conc: 21.41 ng/ml

Instrument :
 ECD_P
 ClientSampleId :
 C150-CU

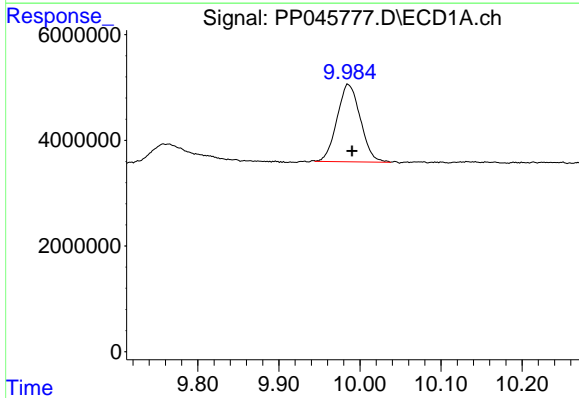
Manual Integrations
 APPROVED

Reviewed By :Yogesh Patel 04/11/2022
 Supervised By :mohammad ahmed 04/11/2022



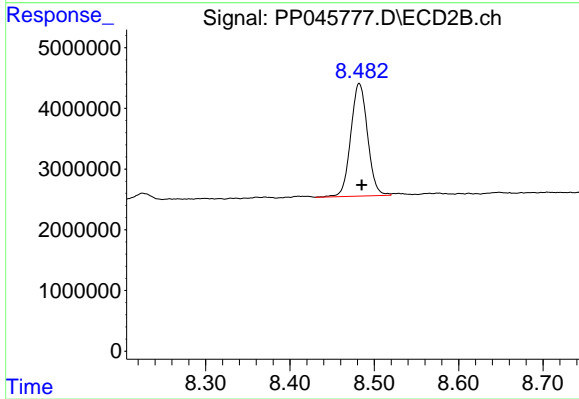
#1 Tetrachloro-m-xylene

R.T.: 3.142 min
 Delta R.T.: -0.002 min
 Response: 36370494
 Conc: 22.99 ng/ml



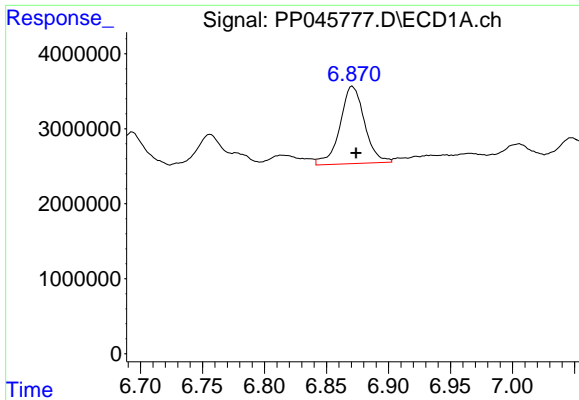
#2 Decachlorobiphenyl

R.T.: 9.984 min
 Delta R.T.: -0.006 min
 Response: 29264002
 Conc: 20.42 ng/ml m



#2 Decachlorobiphenyl

R.T.: 8.482 min
 Delta R.T.: -0.003 min
 Response: 25685188
 Conc: 16.94 ng/ml



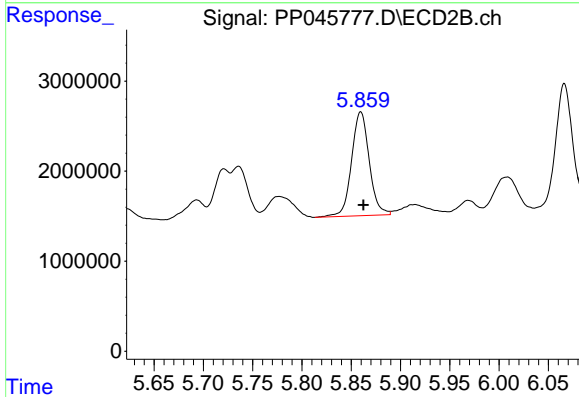
#31 AR-1260-1

R.T.: 6.871 min
 Delta R.T.: -0.003 min
 Response: 14198851
 Conc: 178.04 ng/ml

Instrument :
 ECD_P
 ClientSampleId :
 C150-CU

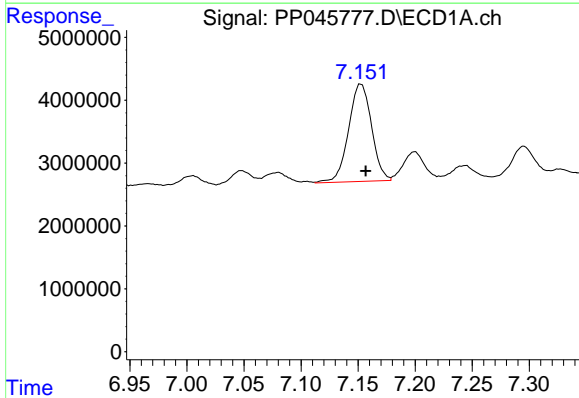
Manual Integrations
 APPROVED

Reviewed By :Yogesh Patel 04/11/2022
 Supervised By :mohammad ahmed 04/11/2022



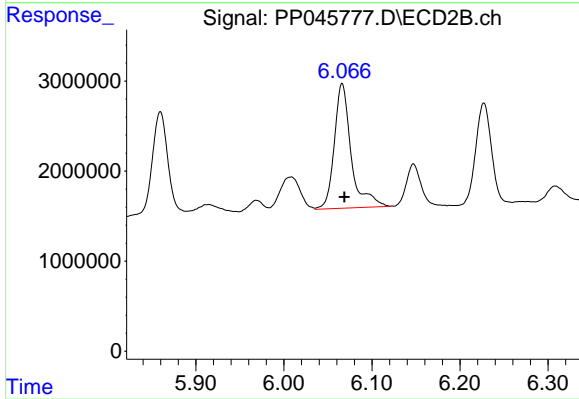
#31 AR-1260-1

R.T.: 5.860 min
 Delta R.T.: -0.003 min
 Response: 14399632
 Conc: 173.71 ng/ml



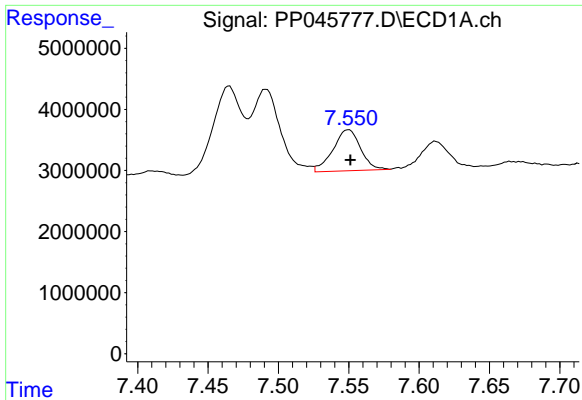
#32 AR-1260-2

R.T.: 7.152 min
 Delta R.T.: -0.004 min
 Response: 21679637
 Conc: 240.59 ng/ml



#32 AR-1260-2

R.T.: 6.066 min
 Delta R.T.: -0.003 min
 Response: 18412796
 Conc: 188.99 ng/ml



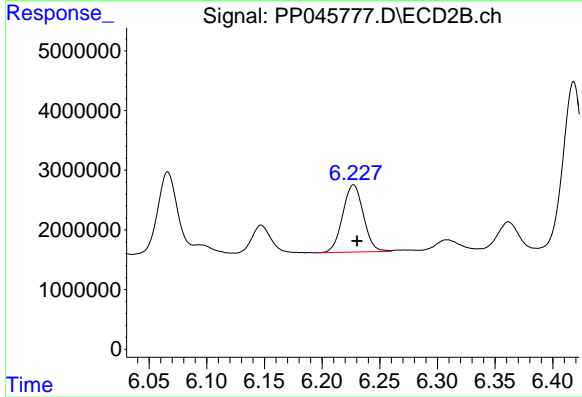
#33 AR-1260-3

R.T.: 7.550 min
 Delta R.T.: -0.001 min
 Response: 9170335
 Conc: 132.37 ng/ml

Instrument :
 ECD_P
 ClientSampleId :
 C150-CU

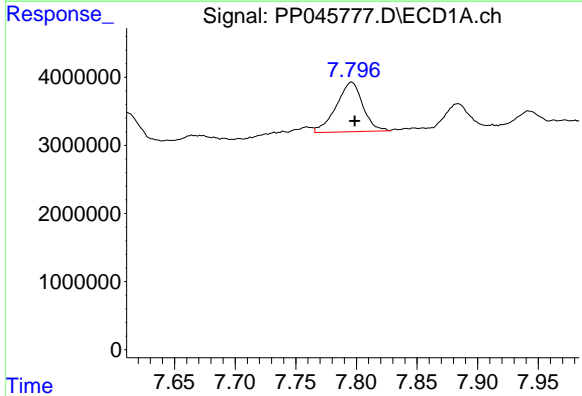
Manual Integrations
 APPROVED

Reviewed By :Yogesh Patel 04/11/2022
 Supervised By :mohammad ahmed 04/11/2022



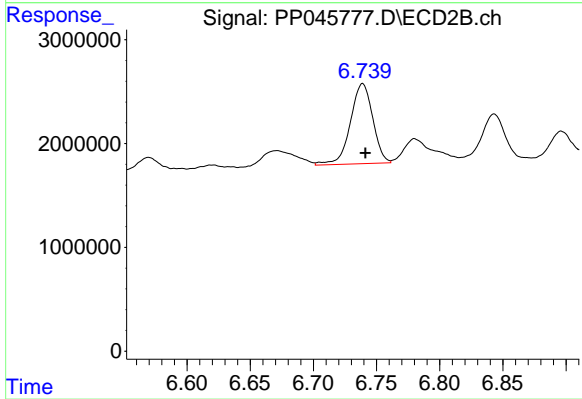
#33 AR-1260-3

R.T.: 6.227 min
 Delta R.T.: -0.003 min
 Response: 14019052
 Conc: 151.56 ng/ml



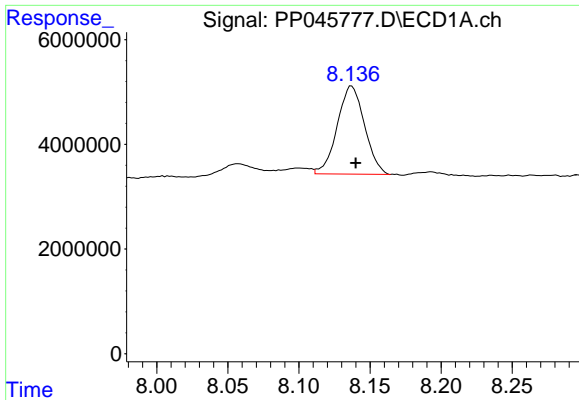
#34 AR-1260-4

R.T.: 7.796 min
 Delta R.T.: -0.003 min
 Response: 11095744
 Conc: 143.83 ng/ml m



#34 AR-1260-4

R.T.: 6.739 min
 Delta R.T.: -0.002 min
 Response: 9527749
 Conc: 124.36 ng/ml



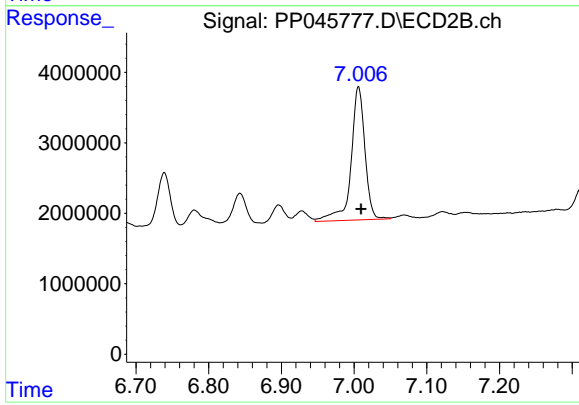
#35 AR-1260-5

R.T.: 8.136 min
Delta R.T.: -0.004 min
Response: 22450244
Conc: 159.01 ng/ml

Instrument :
ECD_P
ClientSampleId :
C150-CU

Manual Integrations
APPROVED

Reviewed By :Yogesh Patel 04/11/2022
Supervised By :mohammad ahmed 04/11/2022



#35 AR-1260-5

R.T.: 7.006 min
Delta R.T.: -0.004 min
Response: 25132452
Conc: 142.08 ng/ml