

Data Path : Z:\pestpcbsrv\HPCHEM1\ECD_P\Data\PP040822\
 Data File : PP045793.D
 Signal(s) : Signal #1: ECD1A.ch Signal #2: ECD2B.ch
 Acq On : 10 Apr 2022 08:48
 Operator : YP\AJ
 Sample : N2334-16
 Misc :
 ALS Vial : 83 Sample Multiplier: 1

Instrument :
 ECD_P
ClientSampleId :
 FB040722

Manual Integrations
APPROVED

Reviewed By :Yogesh Patel 04/11/2022
 Supervised By :mohammad ahmed 04/11/2022

Integration File signal 1: autoint1.e
 Integration File signal 2: autoint2.e
 Quant Time: Apr 11 02:31:53 2022
 Quant Method : Z:\pestpcbsrv\HPCHEM1\ECD_P\methods\PP033022.M
 Quant Title : GC EXTRACTABLES
 QLast Update : Sat Apr 09 07:55:16 2022
 Response via : Initial Calibration
 Integrator: ChemStation

Volume Inj. : 2 µl
 Signal #1 Phase : ZB-MR1 Signal #2 Phase: ZB-MR2
 Signal #1 Info : 30Mx0.32mmx 0.50µ Signal #2 Info : 30M x 0.32mm x 0.25µm

Compound	RT#1	RT#2	Resp#1	Resp#2	ng/ml	ng/ml

System Monitoring Compounds						
1) SA Tetrachlo...	3.883	3.143	52178781	35797042	21.626	22.623
2) SA Decachlor...	9.986	8.482	23264113	23640622	16.236m	15.590

Target Compounds

(f)=RT Delta > 1/2 Window (#)=Amounts differ by > 25% (m)=manual int.

Data Path : Z:\pestpcbsrv\HPCHEM1\ECD_P\Data\PP040822\
 Data File : PP045793.D
 Signal(s) : Signal #1: ECD1A.ch Signal #2: ECD2B.ch
 Acq On : 10 Apr 2022 08:48
 Operator : YP\AJ
 Sample : N2334-16
 Misc :
 ALS Vial : 83 Sample Multiplier: 1

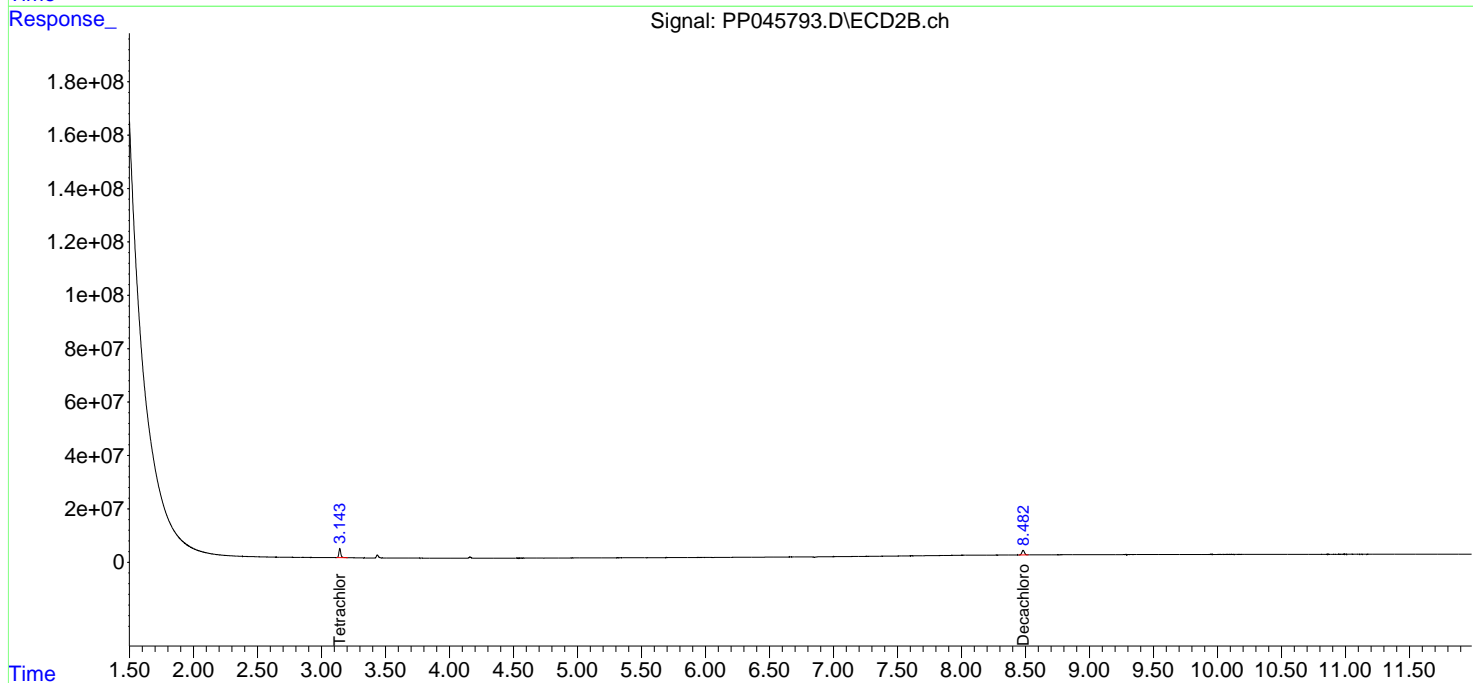
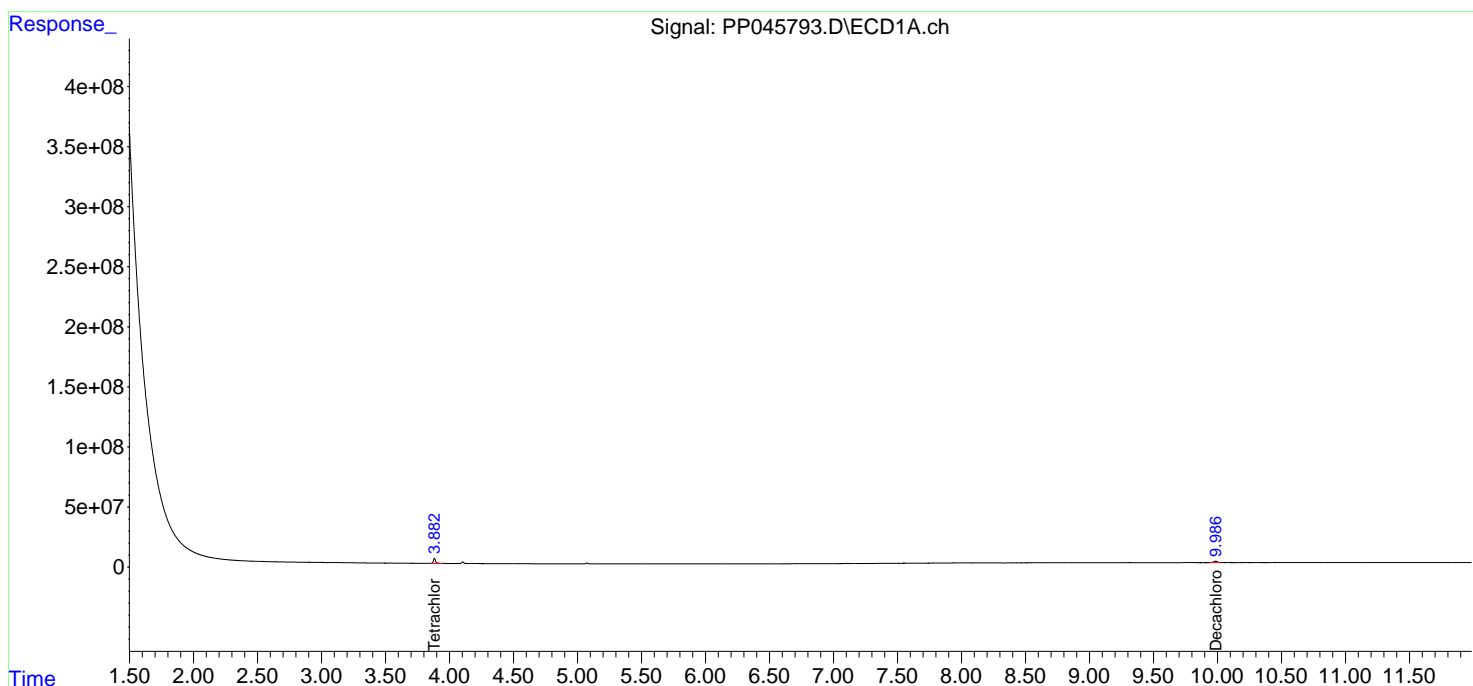
Instrument :
 ECD_P
ClientSampleId :
 FB040722

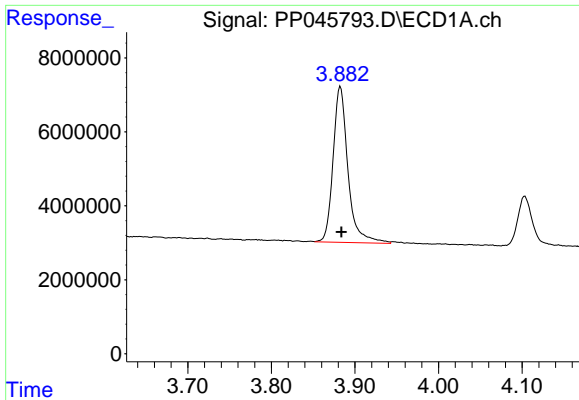
Manual Integrations
APPROVED

Reviewed By :Yogesh Patel 04/11/2022
 Supervised By :mohammad ahmed 04/11/2022

Integration File signal 1: autoint1.e
 Integration File signal 2: autoint2.e
 Quant Time: Apr 11 02:31:53 2022
 Quant Method : Z:\pestpcbsrv\HPCHEM1\ECD_P\methods\PP033022.M
 Quant Title : GC EXTRACTABLES
 QLast Update : Sat Apr 09 07:55:16 2022
 Response via : Initial Calibration
 Integrator: ChemStation

Volume Inj. : 2 µl
 Signal #1 Phase : ZB-MR1 Signal #2 Phase: ZB-MR2
 Signal #1 Info : 30Mx0.32mmx 0.50µ Signal #2 Info : 30M x 0.32mm x 0.25µm





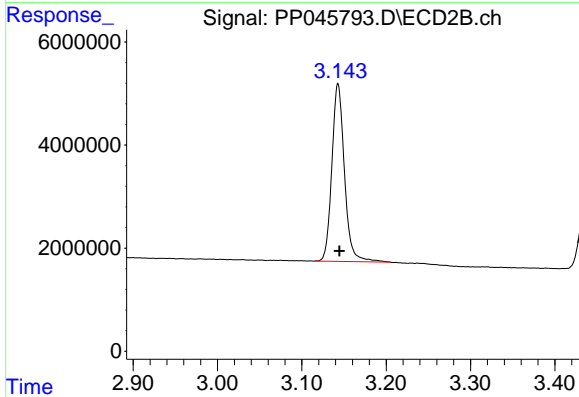
#1 Tetrachloro-m-xylene

R.T.: 3.883 min
 Delta R.T.: -0.001 min
 Response: 52178781
 Conc: 21.63 ng/ml

Instrument :
 ECD_P
 ClientSampleId :
 FB040722

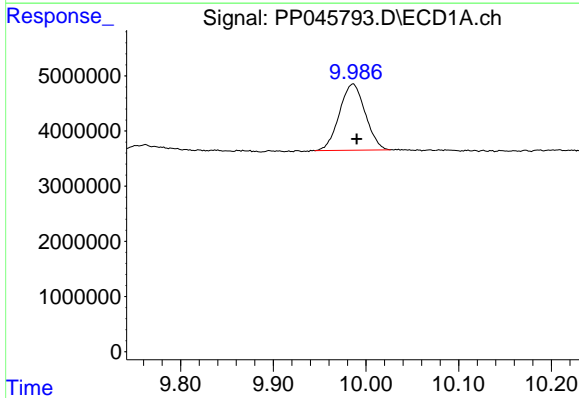
Manual Integrations
 APPROVED

Reviewed By :Yogesh Patel 04/11/2022
 Supervised By :mohammad ahmed 04/11/2022



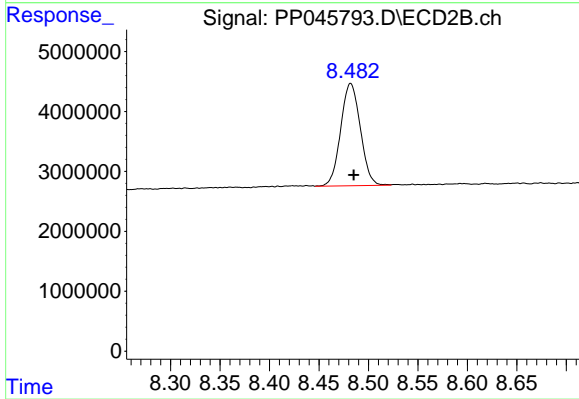
#1 Tetrachloro-m-xylene

R.T.: 3.143 min
 Delta R.T.: -0.002 min
 Response: 35797042
 Conc: 22.62 ng/ml



#2 Decachlorobiphenyl

R.T.: 9.986 min
 Delta R.T.: -0.004 min
 Response: 23264113
 Conc: 16.24 ng/ml m



#2 Decachlorobiphenyl

R.T.: 8.482 min
 Delta R.T.: -0.003 min
 Response: 23640622
 Conc: 15.59 ng/ml