

Data Path : Z:\pestpcbsrv\HPCHEM1\ECD_P\Data\PP041023\
 Data File : PP056819.D
 Signal(s) : Signal #1: ECD1A.ch Signal #2: ECD2B.ch
 Acq On : 10 Apr 2023 15:17
 Operator : YP\AJ
 Sample : 02257-01
 Misc :
 ALS Vial : 18 Sample Multiplier: 1

Instrument :
 ECD_P
 ClientSampleId :

Integration File signal 1: autoint1.e
 Integration File signal 2: autoint2.e
 Quant Time: Apr 10 23:10:45 2023
 Quant Method : Z:\pestpcbsrv\HPCHEM1\ECD_P\methods\PP040623.M
 Quant Title : GC EXTRACTABLES
 QLast Update : Fri Apr 07 04:14:17 2023
 Response via : Initial Calibration
 Integrator: ChemStation

Volume Inj. : 2 µl
 Signal #1 Phase : ZB-MR1 Signal #2 Phase: ZB-MR2
 Signal #1 Info : 30Mx0.32mmx 0.50µ Signal #2 Info : 30M x 0.32mm x 0.25µm

Compound	RT#1	RT#2	Resp#1	Resp#2	ng/ml	ng/ml
System Monitoring Compounds						
1) SA Tetrachlo...	4.435	3.662	33655584	26228661	15.665	15.081
2) SA Decachlor...	10.268	8.744	21978928	23775368	16.792	15.121
Target Compounds						
3) L1 AR-1016-1	5.608	4.763	772144	304519	12.576	5.718 #
4) L1 AR-1016-2	5.627	4.803f	1276877	899400	14.319	12.129
5) L1 AR-1016-3	5.705	4.960	1104176	122568	19.476	3.046 #
6) L1 AR-1016-4	5.771f	5.003	1328489	286624	29.667	7.910 #
7) L1 AR-1016-5	6.091	5.209	1280495	-12794	27.310	N.D. #
8) L2 AR-1221-1	4.642	3.866f	468291	1024382	17.754	46.775 #
9) L2 AR-1221-2	4.743	3.966	596041	633537	30.683	38.560 #
10) L2 AR-1221-3	4.804	4.043	410923	758540	7.213	15.470 #
11) L3 AR-1232-1	4.804	4.043	410923	758540	8.532	18.438 #
12) L3 AR-1232-2	5.355	4.803f	1896290	899400	75.913	26.243 #
13) L3 AR-1232-3	5.627	4.960	1276877	122568	31.670	6.661 #
14) L3 AR-1232-4	5.771f	5.042	1328489	203249	65.933	10.606 #
15) L3 AR-1232-5	5.887	5.209	623305	-12794	35.462	N.D. #
16) L4 AR-1242-1	5.608	4.763	772144	304519	15.355	7.080 #
17) L4 AR-1242-2	5.627	4.803f	1276877	899400	17.535	15.115
18) L4 AR-1242-3	5.705	4.960	1104176	122568	24.099	3.799 #
19) L4 AR-1242-4	5.771f	5.042	1328489	203249	36.818	5.578 #
20) L4 AR-1242-5	6.536	5.576	969665	2567387	29.212	64.390 #
21) L5 AR-1248-1	5.608	4.763	772144	304519	20.580	9.251 #
22) L5 AR-1248-2	5.887	5.003	623305	286624	10.583	5.561 #
23) L5 AR-1248-3	6.091	5.042	1280495	203249	20.098	3.786 #
24) L5 AR-1248-4	6.472f	5.209	2348355	-12794	40.437	N.D. #
25) L5 AR-1248-5	6.536	0.000	969665	0	17.166	N.D. #
26) L6 AR-1254-1	6.472	5.576	2348355	2567387	33.119	27.871
27) L6 AR-1254-2	6.693	5.724	2074131	963836	20.453	11.993 #
28) L6 AR-1254-3	7.059	6.133	3668883	4745057	37.850	38.385
29) L6 AR-1254-4	7.346	6.362	1464450	1074149	23.994	16.901 #
30) L6 AR-1254-5	7.768	6.784	4987176	5226612	73.188	49.713 #
31) L7 AR-1260-1	7.225	6.264	2740278	3079587	33.664	32.198
32) L7 AR-1260-2	7.482	6.453	3674968	2785089	43.074	26.967 #
33) L7 AR-1260-3	7.843	6.608	2404775	2858720	34.435	27.566
34) L7 AR-1260-4	8.066	7.085	4249107	1661750	55.690	19.456 #
35) L7 AR-1260-5	8.396	7.327	3668582	3018552	28.984	19.073 #
36) L8 AR-1262-1	7.843	6.878	2404775	1278394	27.302	27.322
37) L8 AR-1262-2	8.396	7.085	3668582	1661750	28.334	16.990 #
38) L8 AR-1262-3	8.736f	7.614	15271888	916916	165.801	13.806 #
39) L8 AR-1262-4	8.807	7.676	1160537	2931570	25.560	24.873
40) L8 AR-1262-5	9.483	8.178	800566	751067	19.928	15.410
41) L9 AR-1268-1	8.736f	7.614	15271888	916916	81.993	4.136 #

Data Path : Z:\pestpcbsrv\HPCHEM1\ECD_P\Data\PP041023\
 Data File : PP056819.D
 Signal(s) : Signal #1: ECD1A.ch Signal #2: ECD2B.ch
 Acq On : 10 Apr 2023 15:17
 Operator : YP\AJ
 Sample : 02257-01
 Misc :
 ALS Vial : 18 Sample Multiplier: 1

Instrument :
 ECD_P
 ClientSampleId :

Integration File signal 1: autoint1.e
 Integration File signal 2: autoint2.e
 Quant Time: Apr 10 23:10:45 2023
 Quant Method : Z:\pestpcbsrv\HPCHEM1\ECD_P\methods\PP040623.M
 Quant Title : GC EXTRACTABLES
 QLast Update : Fri Apr 07 04:14:17 2023
 Response via : Initial Calibration
 Integrator: ChemStation

Volume Inj. : 2 µl
 Signal #1 Phase : ZB-MR1 Signal #2 Phase: ZB-MR2
 Signal #1 Info : 30Mx0.32mmx 0.50µ Signal #2 Info : 30M x 0.32mm x 0.25µm

	Compound	RT#1	RT#2	Resp#1	Resp#2	ng/ml	ng/ml
42)	L9 AR-1268-2	8.807	7.676	1160537	2931570	6.993	15.095 #
43)	L9 AR-1268-3	9.049	7.890	299669	239920	1.883	1.210 #
44)	L9 AR-1268-4	9.483	8.178	800566	751067	17.243	12.985
45)	L9 AR-1268-5	9.920	8.478	811507	1456539	1.890	2.868 #

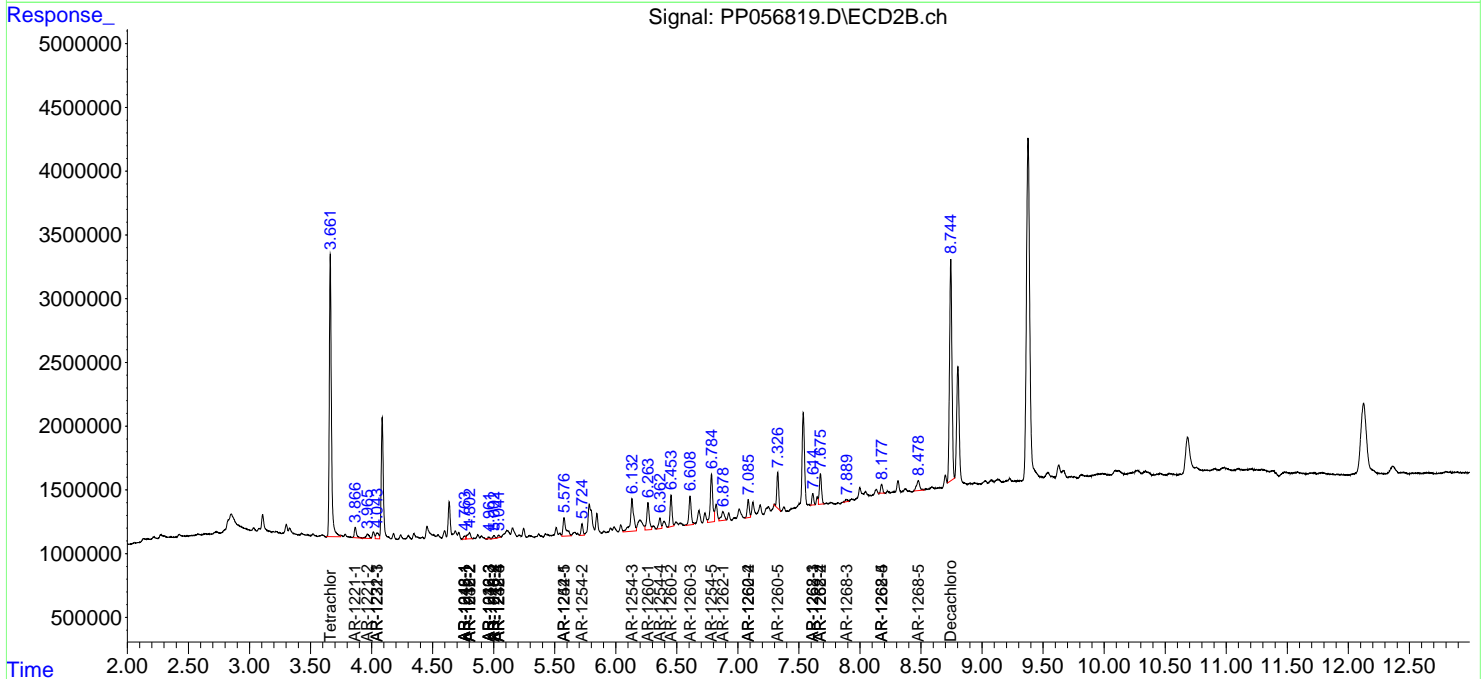
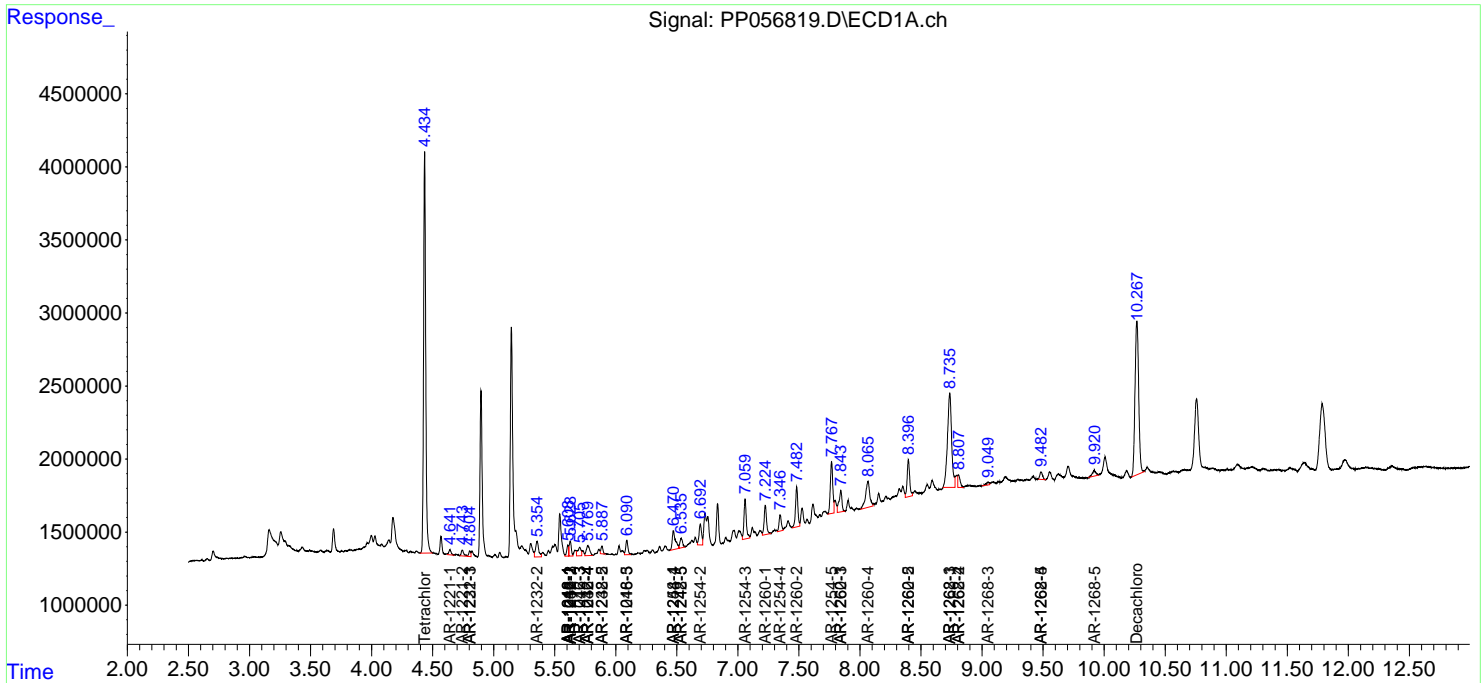
(f)=RT Delta > 1/2 Window (#)=Amounts differ by > 25% (m)=manual int.

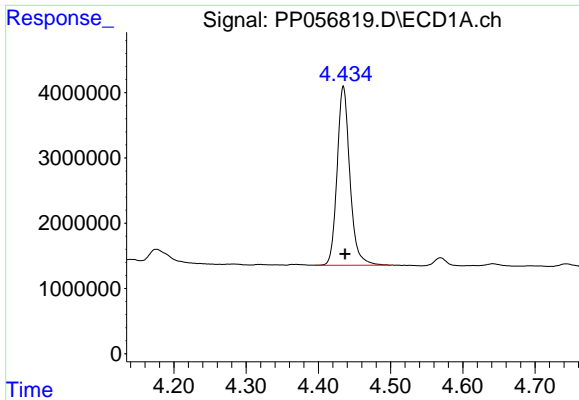
Data Path : Z:\pestpcbsrv\HPCHEM1\ECD_P\Data\PP041023\
 Data File : PP056819.D
 Signal(s) : Signal #1: ECD1A.ch Signal #2: ECD2B.ch
 Acq On : 10 Apr 2023 15:17
 Operator : YP\AJ
 Sample : 02257-01
 Misc :
 ALS Vial : 18 Sample Multiplier: 1

Instrument :
 ECD_P
 ClientSampleId :

Integration File signal 1: autoint1.e
 Integration File signal 2: autoint2.e
 Quant Time: Apr 10 23:10:45 2023
 Quant Method : Z:\pestpcbsrv\HPCHEM1\ECD_P\methods\PP040623.M
 Quant Title : GC EXTRACTABLES
 QLast Update : Fri Apr 07 04:14:17 2023
 Response via : Initial Calibration
 Integrator: ChemStation

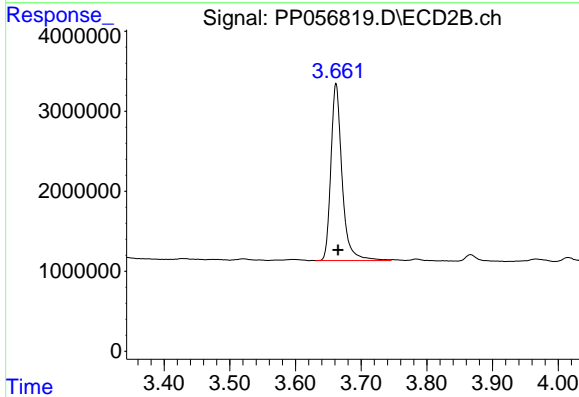
Volume Inj. : 2 µl
 Signal #1 Phase : ZB-MR1 Signal #2 Phase: ZB-MR2
 Signal #1 Info : 30Mx0.32mmx 0.50µ Signal #2 Info : 30M x 0.32mm x 0.25µm



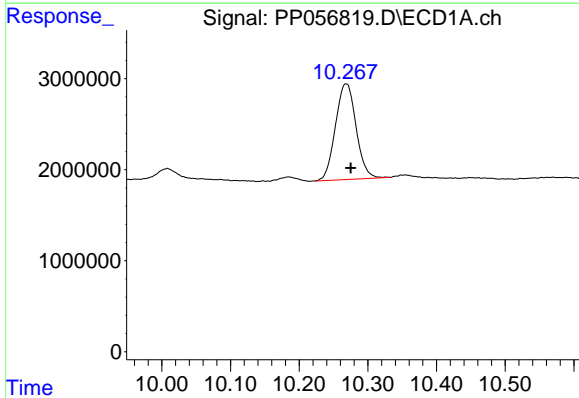


#1 Tetrachloro-m-xylene
 R.T.: 4.435 min
 Delta R.T.: -0.002 min
 Response: 33655584
 Conc: 15.66 ng/ml

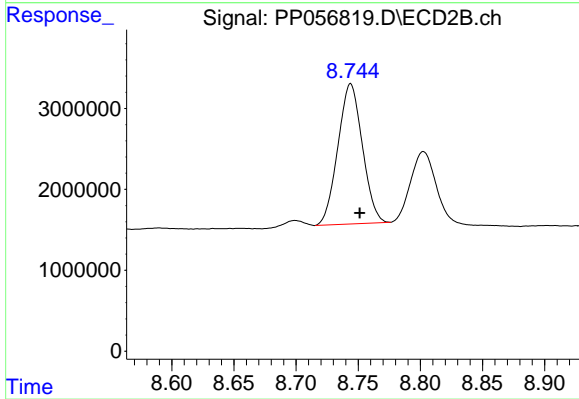
Instrument :
 ECD_P
 ClientSampleId :



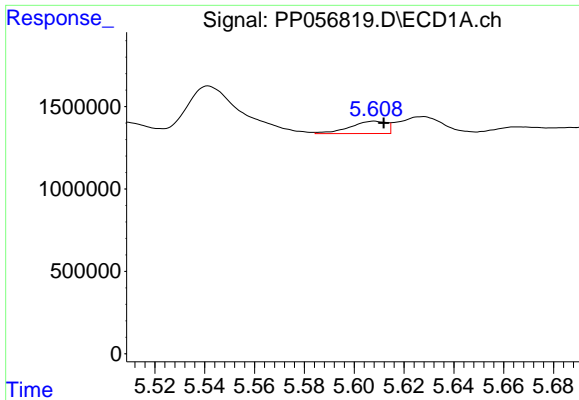
#1 Tetrachloro-m-xylene
 R.T.: 3.662 min
 Delta R.T.: -0.003 min
 Response: 26228661
 Conc: 15.08 ng/ml



#2 Decachlorobiphenyl
 R.T.: 10.268 min
 Delta R.T.: -0.007 min
 Response: 21978928
 Conc: 16.79 ng/ml



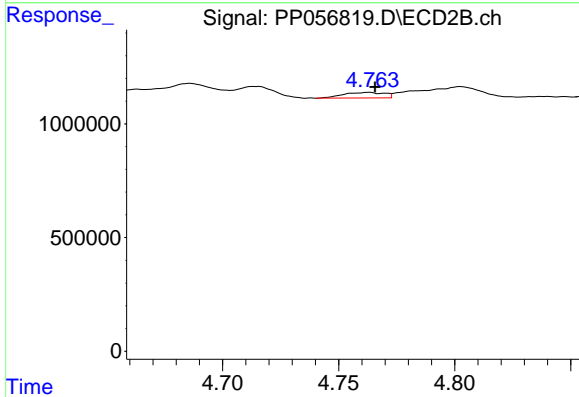
#2 Decachlorobiphenyl
 R.T.: 8.744 min
 Delta R.T.: -0.007 min
 Response: 23775368
 Conc: 15.12 ng/ml



#3 AR-1016-1

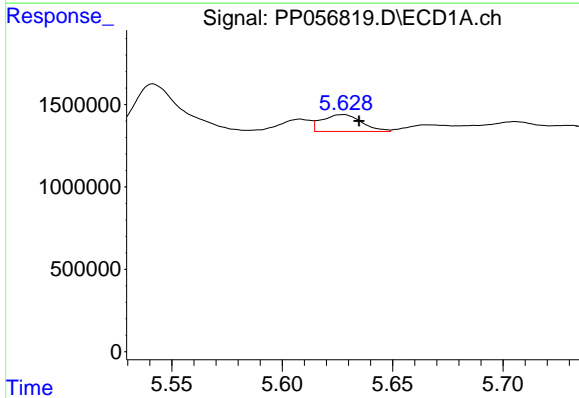
R.T.: 5.608 min
 Delta R.T.: -0.004 min
 Response: 772144
 Conc: 12.58 ng/ml

Instrument :
 ECD_P
 ClientSampleId :



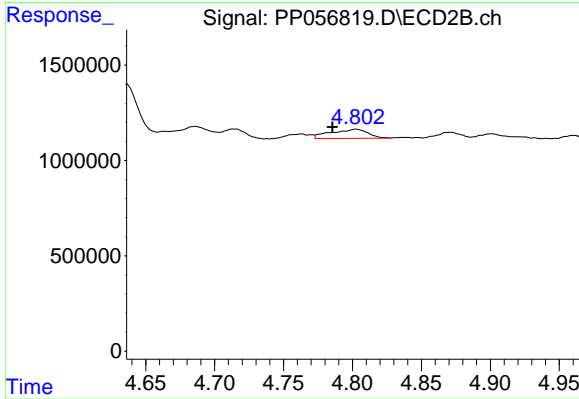
#3 AR-1016-1

R.T.: 4.763 min
 Delta R.T.: -0.003 min
 Response: 304519
 Conc: 5.72 ng/ml



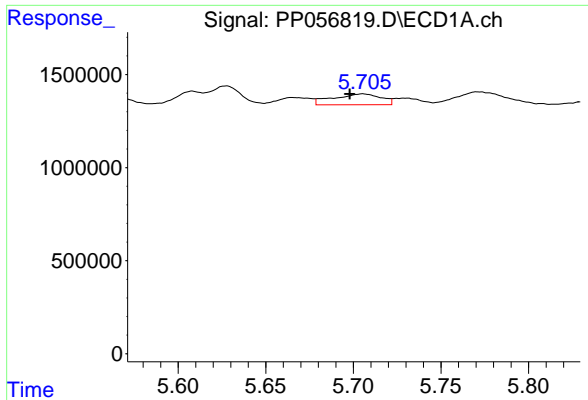
#4 AR-1016-2

R.T.: 5.627 min
 Delta R.T.: -0.007 min
 Response: 1276877
 Conc: 14.32 ng/ml



#4 AR-1016-2

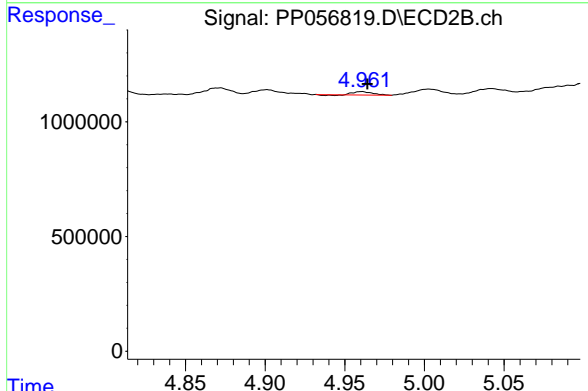
R.T.: 4.803 min
 Delta R.T.: 0.017 min
 Response: 899400
 Conc: 12.13 ng/ml



#5 AR-1016-3

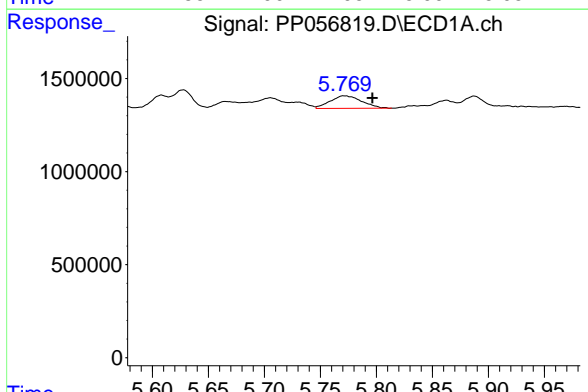
R.T.: 5.705 min
 Delta R.T.: 0.008 min
 Response: 1104176
 Conc: 19.48 ng/ml

Instrument :
 ECD_P
 ClientSampleId :



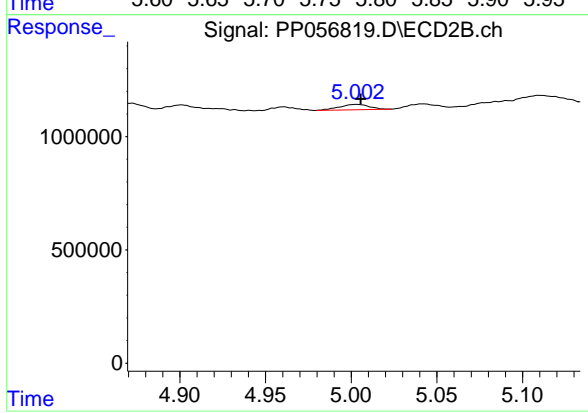
#5 AR-1016-3

R.T.: 4.960 min
 Delta R.T.: -0.004 min
 Response: 122568
 Conc: 3.05 ng/ml



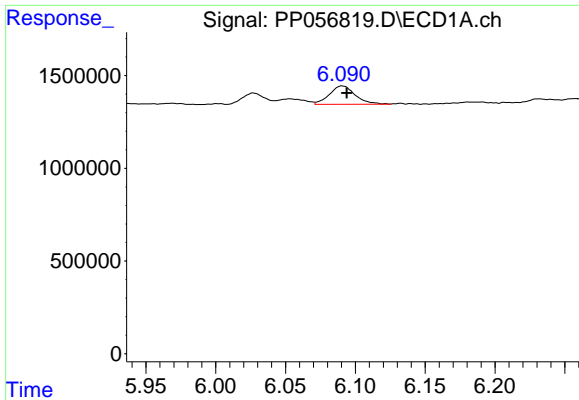
#6 AR-1016-4

R.T.: 5.771 min
 Delta R.T.: -0.025 min
 Response: 1328489
 Conc: 29.67 ng/ml



#6 AR-1016-4

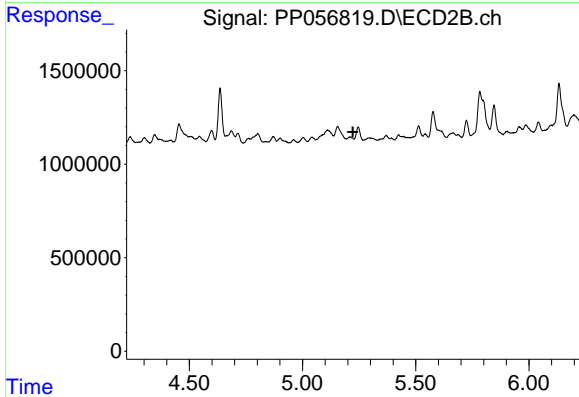
R.T.: 5.003 min
 Delta R.T.: -0.003 min
 Response: 286624
 Conc: 7.91 ng/ml



#7 AR-1016-5

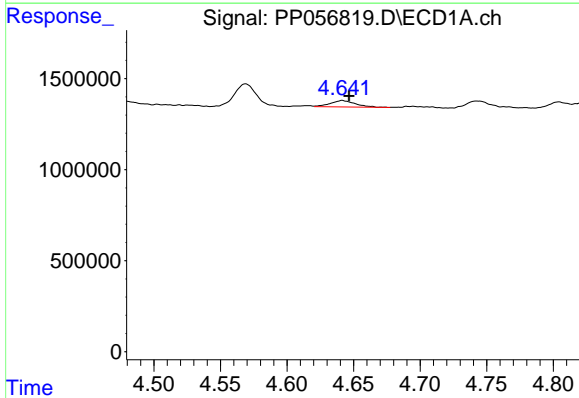
R.T.: 6.091 min
 Delta R.T.: -0.003 min
 Response: 1280495
 Conc: 27.31 ng/ml

Instrument :
 ECD_P
 ClientSampleId :



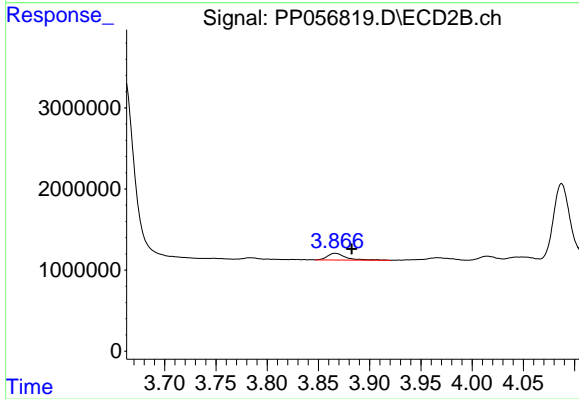
#7 AR-1016-5

R.T.: 5.209 min
 Delta R.T.: -0.014 min
 Response: -12794
 Conc: N.D.



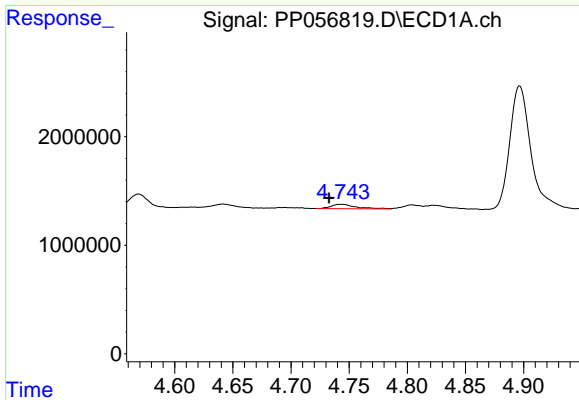
#8 AR-1221-1

R.T.: 4.642 min
 Delta R.T.: -0.005 min
 Response: 468291
 Conc: 17.75 ng/ml



#8 AR-1221-1

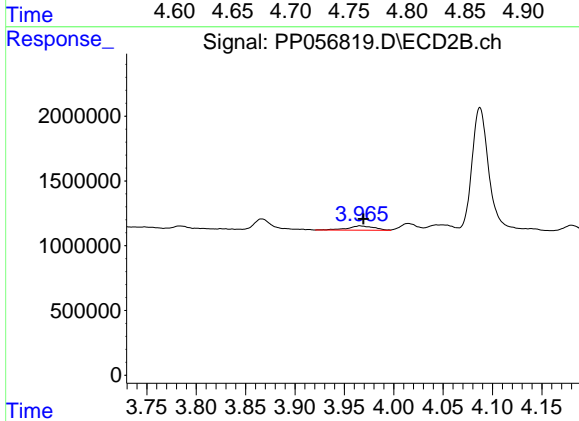
R.T.: 3.866 min
 Delta R.T.: -0.016 min
 Response: 1024382
 Conc: 46.77 ng/ml



#9 AR-1221-2

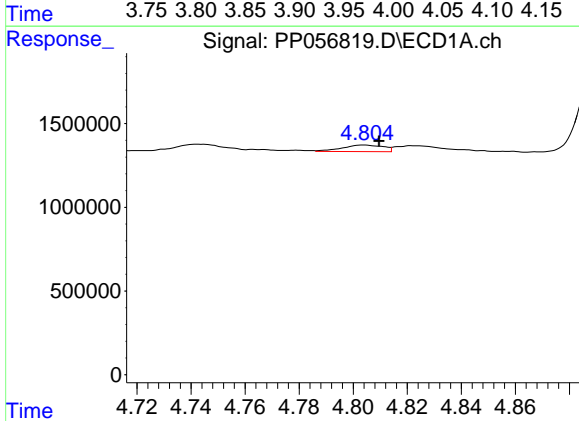
R.T.: 4.743 min
 Delta R.T.: 0.010 min
 Response: 596041
 Conc: 30.68 ng/ml

Instrument :
 ECD_P
 ClientSampleId :



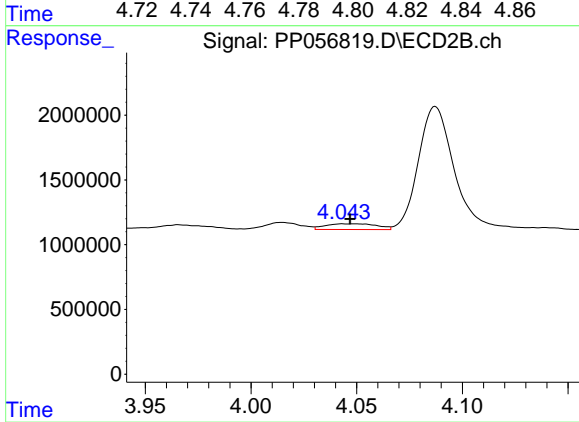
#9 AR-1221-2

R.T.: 3.966 min
 Delta R.T.: -0.003 min
 Response: 633537
 Conc: 38.56 ng/ml



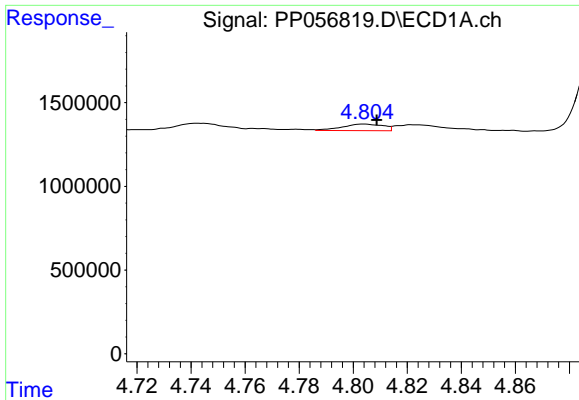
#10 AR-1221-3

R.T.: 4.804 min
 Delta R.T.: -0.006 min
 Response: 410923
 Conc: 7.21 ng/ml



#10 AR-1221-3

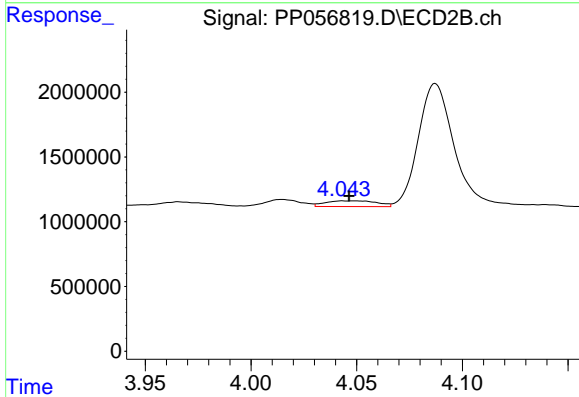
R.T.: 4.043 min
 Delta R.T.: -0.003 min
 Response: 758540
 Conc: 15.47 ng/ml



#11 AR-1232-1

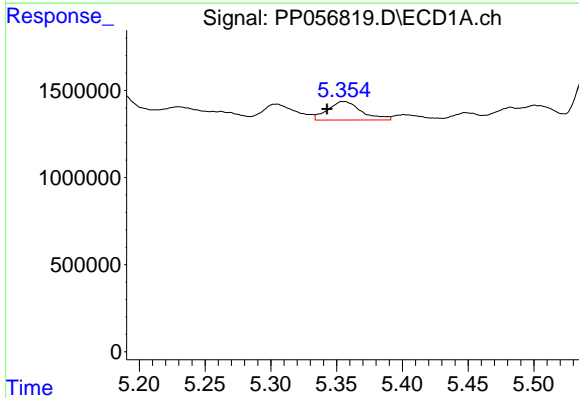
R.T.: 4.804 min
 Delta R.T.: -0.005 min
 Response: 410923
 Conc: 8.53 ng/ml

Instrument :
 ECD_P
 ClientSampleId :



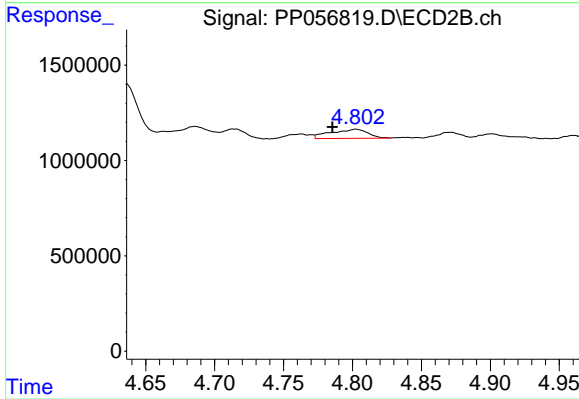
#11 AR-1232-1

R.T.: 4.043 min
 Delta R.T.: -0.003 min
 Response: 758540
 Conc: 18.44 ng/ml



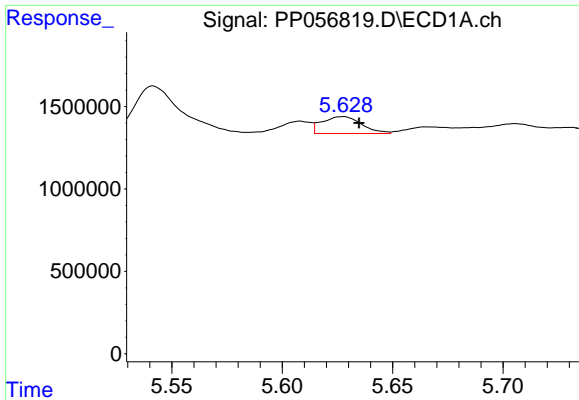
#12 AR-1232-2

R.T.: 5.355 min
 Delta R.T.: 0.013 min
 Response: 1896290
 Conc: 75.91 ng/ml



#12 AR-1232-2

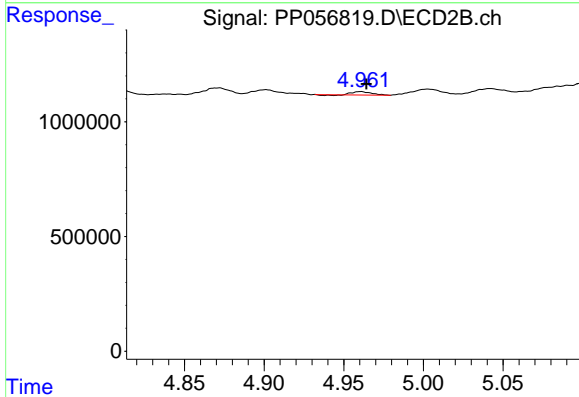
R.T.: 4.803 min
 Delta R.T.: 0.017 min
 Response: 899400
 Conc: 26.24 ng/ml



#13 AR-1232-3

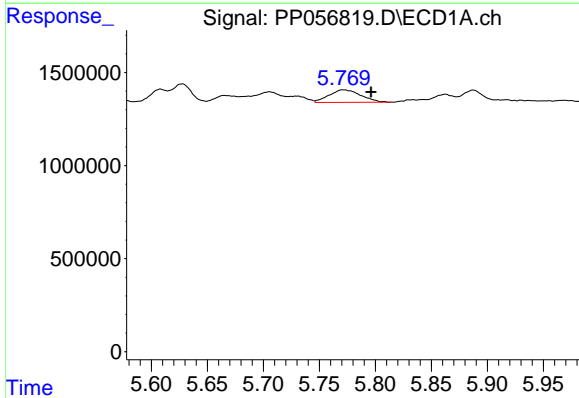
R.T.: 5.627 min
 Delta R.T.: -0.007 min
 Response: 1276877
 Conc: 31.67 ng/ml

Instrument :
 ECD_P
 ClientSampleId :



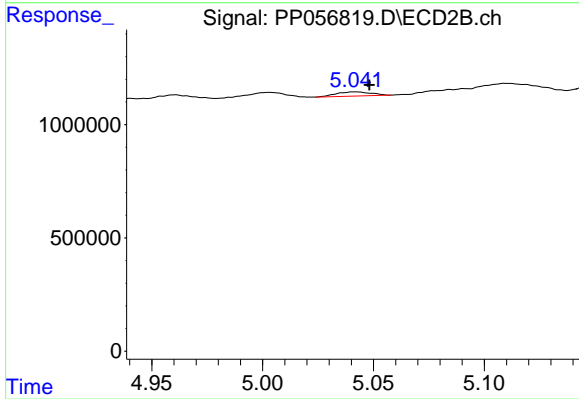
#13 AR-1232-3

R.T.: 4.960 min
 Delta R.T.: -0.004 min
 Response: 122568
 Conc: 6.66 ng/ml



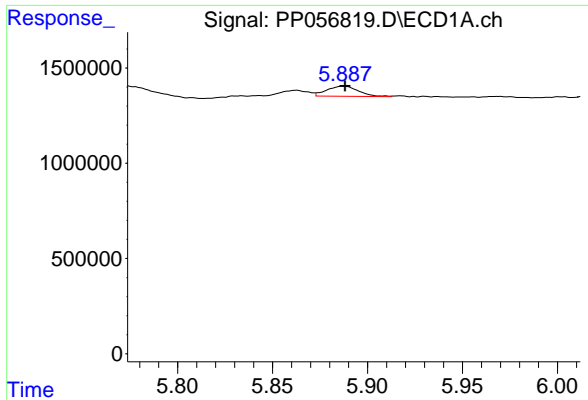
#14 AR-1232-4

R.T.: 5.771 min
 Delta R.T.: -0.025 min
 Response: 1328489
 Conc: 65.93 ng/ml



#14 AR-1232-4

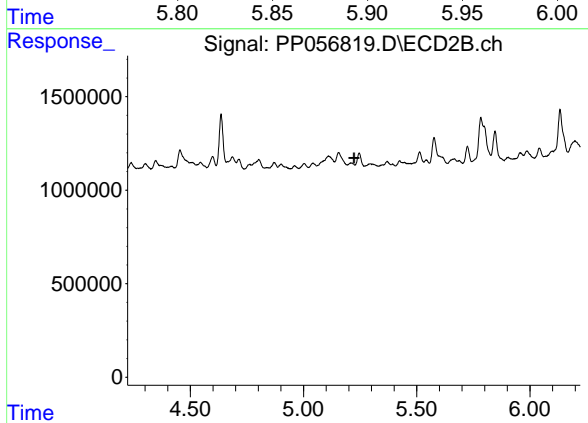
R.T.: 5.042 min
 Delta R.T.: -0.006 min
 Response: 203249
 Conc: 10.61 ng/ml



#15 AR-1232-5

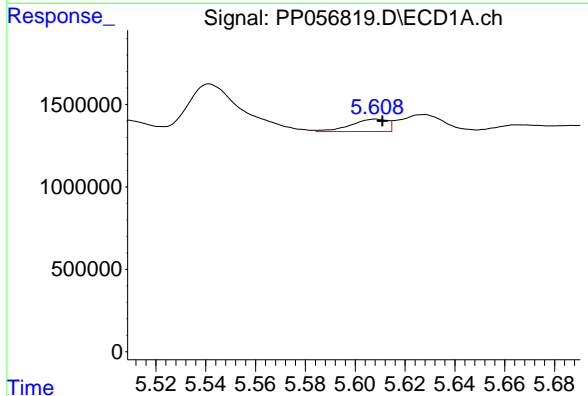
R.T.: 5.887 min
 Delta R.T.: 0.000 min
 Response: 623305
 Conc: 35.46 ng/ml

Instrument :
 ECD_P
 ClientSampleId :



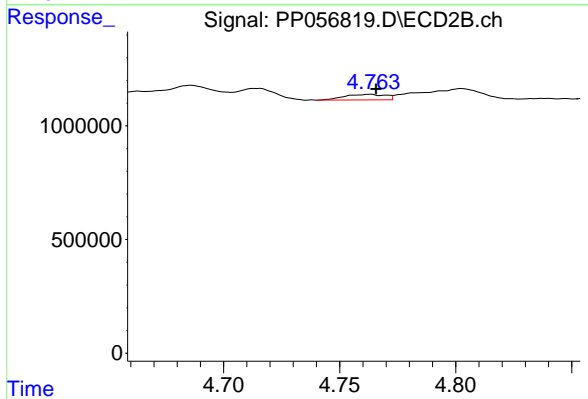
#15 AR-1232-5

R.T.: 5.209 min
 Delta R.T.: -0.014 min
 Response: -12794
 Conc: N.D.



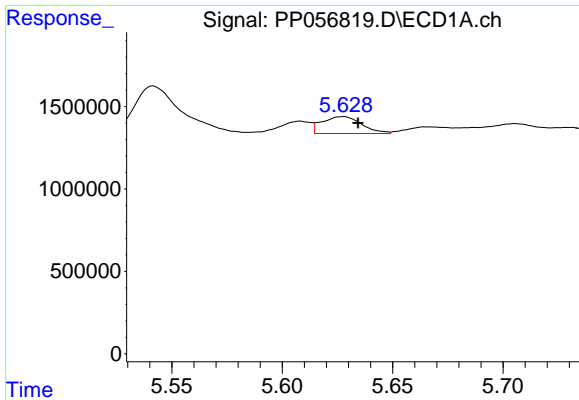
#16 AR-1242-1

R.T.: 5.608 min
 Delta R.T.: -0.003 min
 Response: 772144
 Conc: 15.35 ng/ml



#16 AR-1242-1

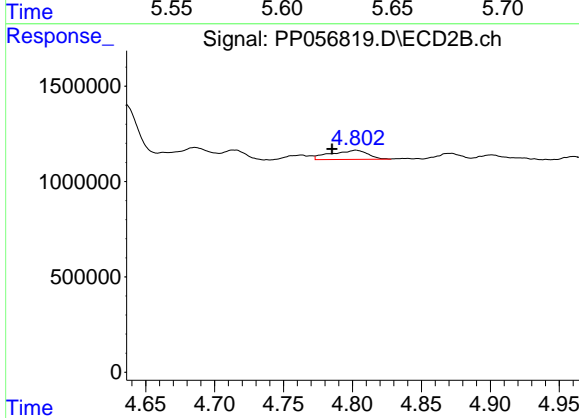
R.T.: 4.763 min
 Delta R.T.: -0.003 min
 Response: 304519
 Conc: 7.08 ng/ml



#17 AR-1242-2

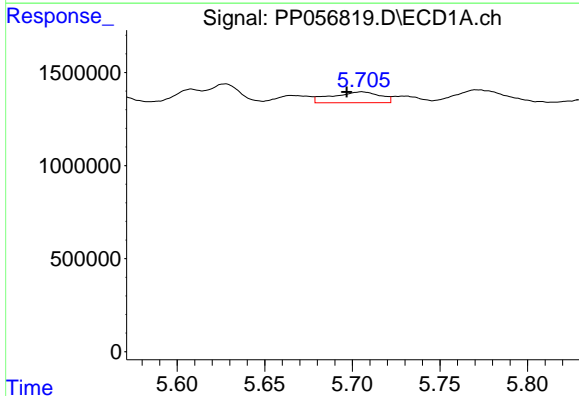
R.T.: 5.627 min
 Delta R.T.: -0.007 min
 Response: 1276877
 Conc: 17.53 ng/ml

Instrument :
 ECD_P
 ClientSampleId :



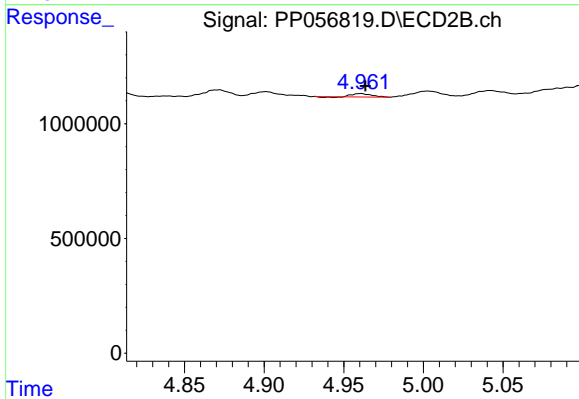
#17 AR-1242-2

R.T.: 4.803 min
 Delta R.T.: 0.017 min
 Response: 899400
 Conc: 15.12 ng/ml



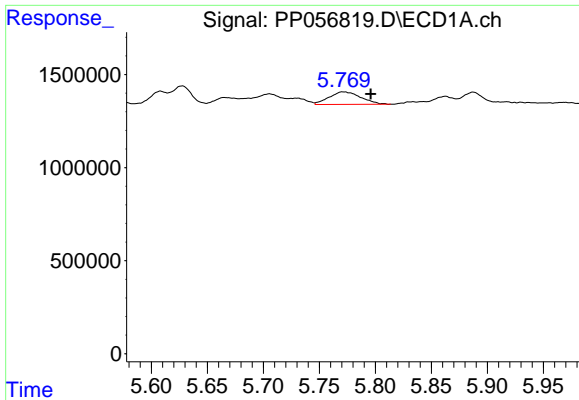
#18 AR-1242-3

R.T.: 5.705 min
 Delta R.T.: 0.009 min
 Response: 1104176
 Conc: 24.10 ng/ml



#18 AR-1242-3

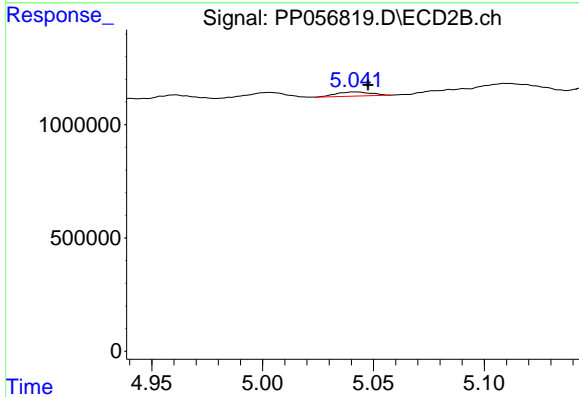
R.T.: 4.960 min
 Delta R.T.: -0.003 min
 Response: 122568
 Conc: 3.80 ng/ml



#19 AR-1242-4

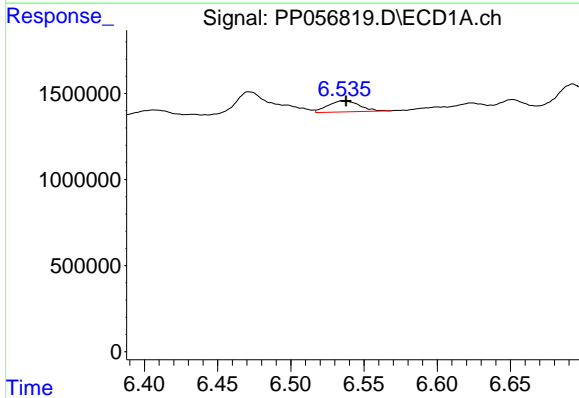
R.T.: 5.771 min
 Delta R.T.: -0.024 min
 Response: 1328489
 Conc: 36.82 ng/ml

Instrument :
 ECD_P
 ClientSampleId :



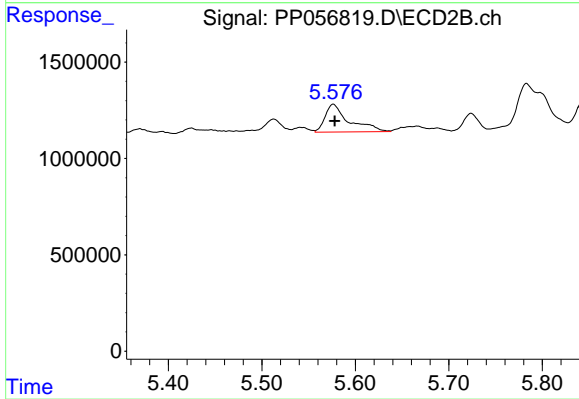
#19 AR-1242-4

R.T.: 5.042 min
 Delta R.T.: -0.006 min
 Response: 203249
 Conc: 5.58 ng/ml



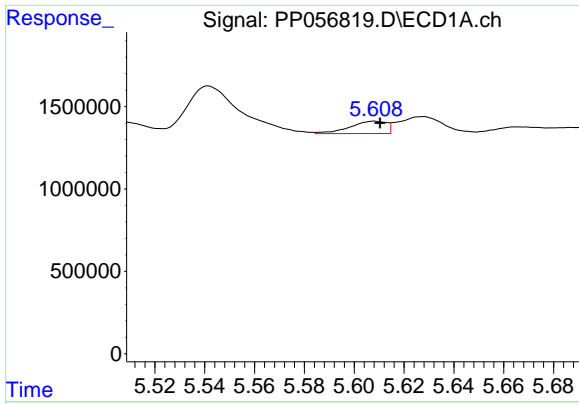
#20 AR-1242-5

R.T.: 6.536 min
 Delta R.T.: -0.002 min
 Response: 969665
 Conc: 29.21 ng/ml



#20 AR-1242-5

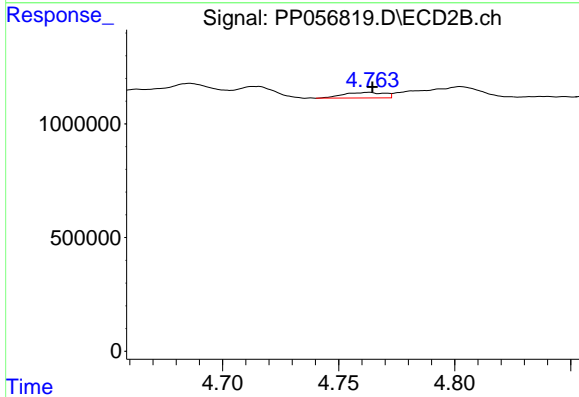
R.T.: 5.576 min
 Delta R.T.: -0.001 min
 Response: 2567387
 Conc: 64.39 ng/ml



#21 AR-1248-1

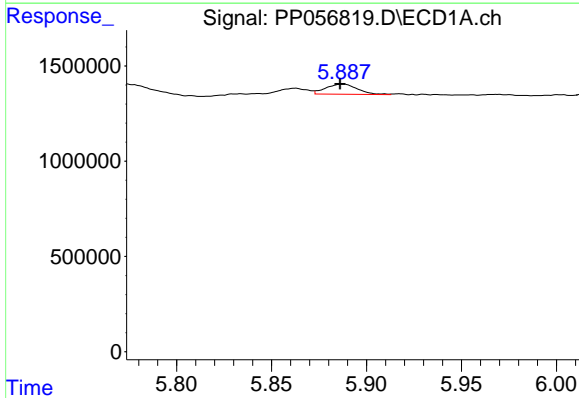
R.T.: 5.608 min
 Delta R.T.: -0.002 min
 Response: 772144
 Conc: 20.58 ng/ml

Instrument :
 ECD_P
 ClientSampleId :



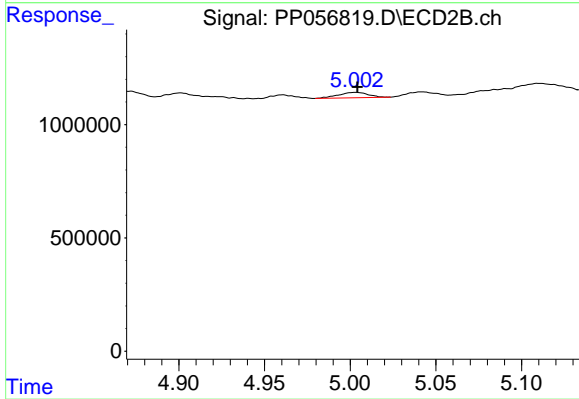
#21 AR-1248-1

R.T.: 4.763 min
 Delta R.T.: -0.002 min
 Response: 304519
 Conc: 9.25 ng/ml



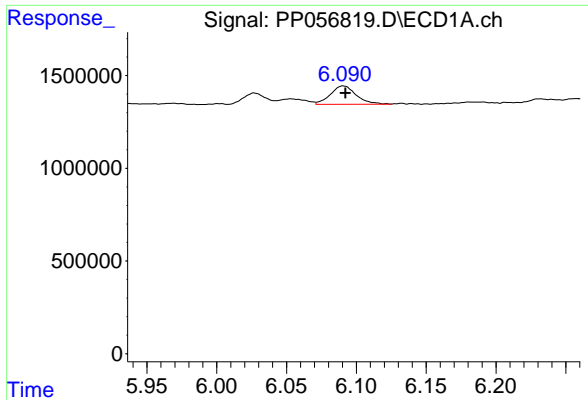
#22 AR-1248-2

R.T.: 5.887 min
 Delta R.T.: 0.001 min
 Response: 623305
 Conc: 10.58 ng/ml



#22 AR-1248-2

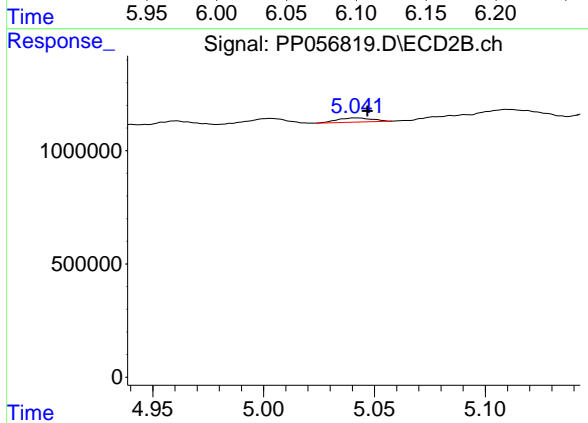
R.T.: 5.003 min
 Delta R.T.: -0.001 min
 Response: 286624
 Conc: 5.56 ng/ml



#23 AR-1248-3

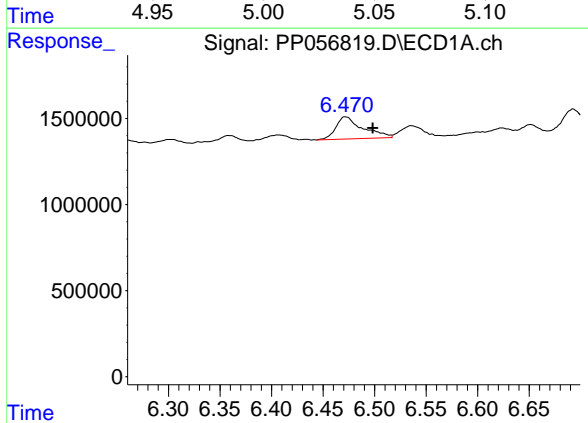
R.T.: 6.091 min
 Delta R.T.: -0.001 min
 Response: 1280495
 Conc: 20.10 ng/ml

Instrument :
 ECD_P
 ClientSampleId :



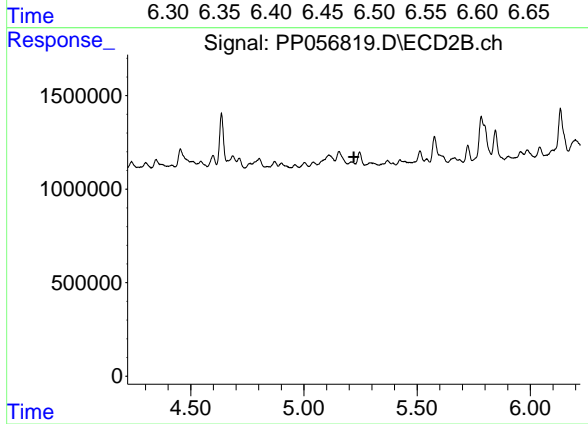
#23 AR-1248-3

R.T.: 5.042 min
 Delta R.T.: -0.005 min
 Response: 203249
 Conc: 3.79 ng/ml



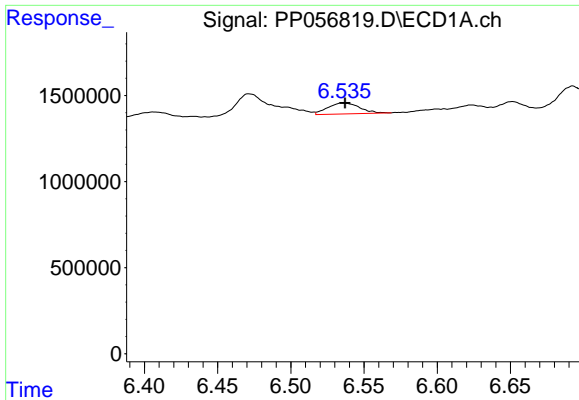
#24 AR-1248-4

R.T.: 6.472 min
 Delta R.T.: -0.026 min
 Response: 2348355
 Conc: 40.44 ng/ml



#24 AR-1248-4

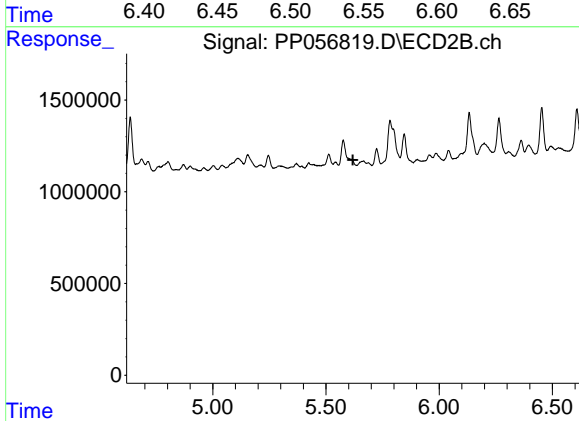
R.T.: 5.209 min
 Delta R.T.: -0.012 min
 Response: -12794
 Conc: N.D.



#25 AR-1248-5

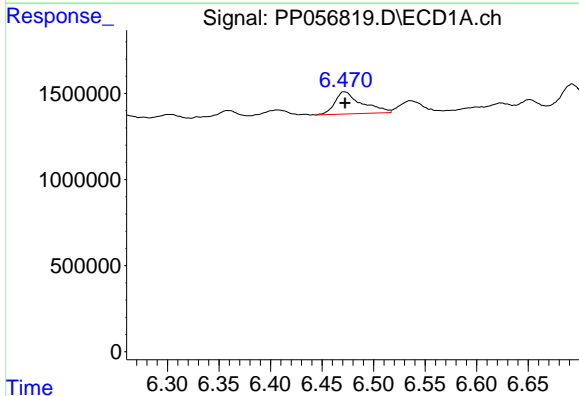
R.T.: 6.536 min
 Delta R.T.: -0.001 min
 Response: 969665
 Conc: 17.17 ng/ml

Instrument :
 ECD_P
 ClientSampleId :



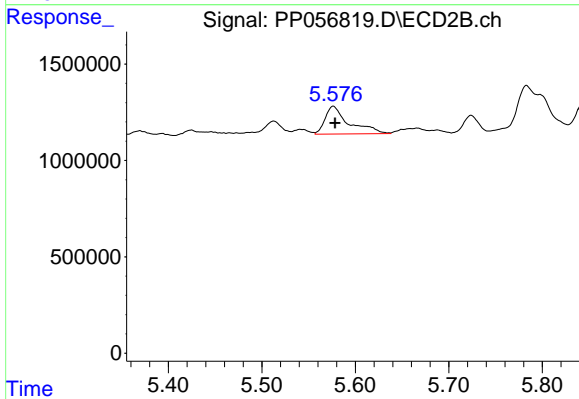
#25 AR-1248-5

R.T.: 0.000 min
 Exp R.T. : 5.619 min
 Response: 0
 Conc: N.D.



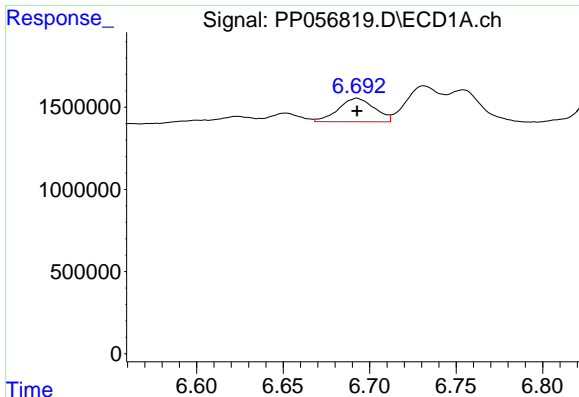
#26 AR-1254-1

R.T.: 6.472 min
 Delta R.T.: 0.000 min
 Response: 2348355
 Conc: 33.12 ng/ml



#26 AR-1254-1

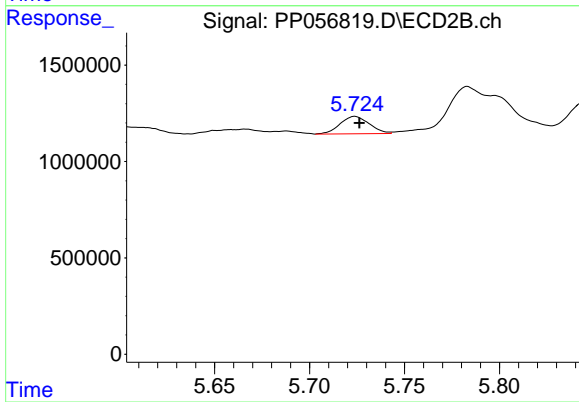
R.T.: 5.576 min
 Delta R.T.: -0.002 min
 Response: 2567387
 Conc: 27.87 ng/ml



#27 AR-1254-2

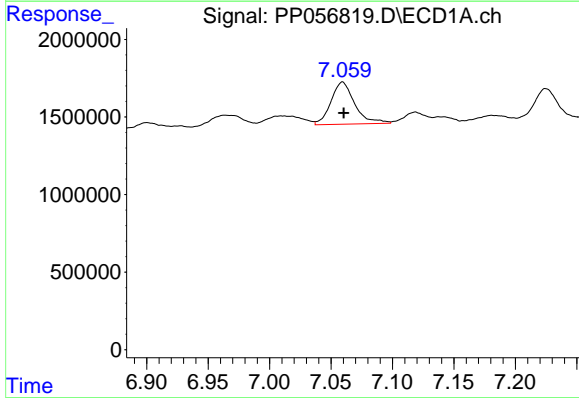
R.T.: 6.693 min
 Delta R.T.: 0.000 min
 Response: 2074131
 Conc: 20.45 ng/ml

Instrument :
 ECD_P
 ClientSampleId :



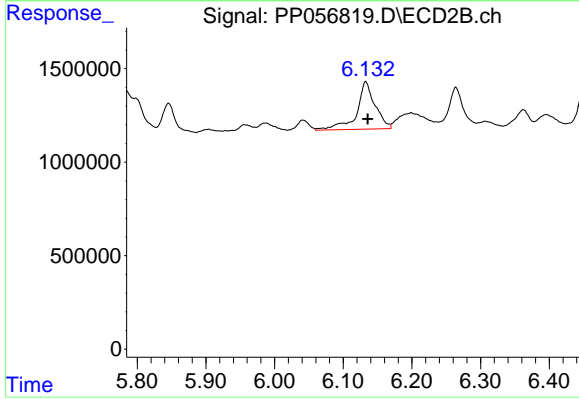
#27 AR-1254-2

R.T.: 5.724 min
 Delta R.T.: -0.002 min
 Response: 963836
 Conc: 11.99 ng/ml



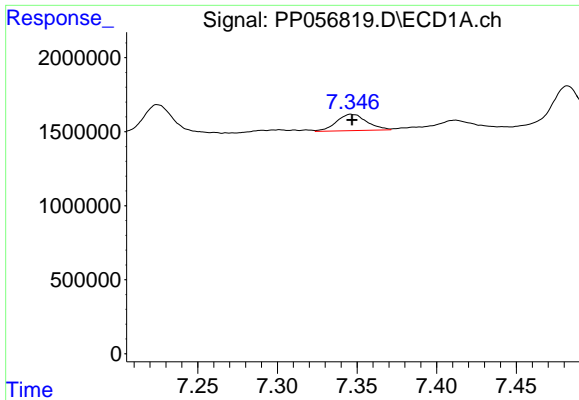
#28 AR-1254-3

R.T.: 7.059 min
 Delta R.T.: 0.000 min
 Response: 3668883
 Conc: 37.85 ng/ml



#28 AR-1254-3

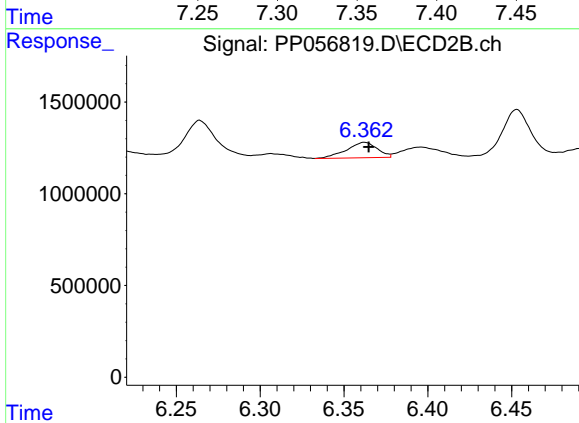
R.T.: 6.133 min
 Delta R.T.: -0.003 min
 Response: 4745057
 Conc: 38.39 ng/ml



#29 AR-1254-4

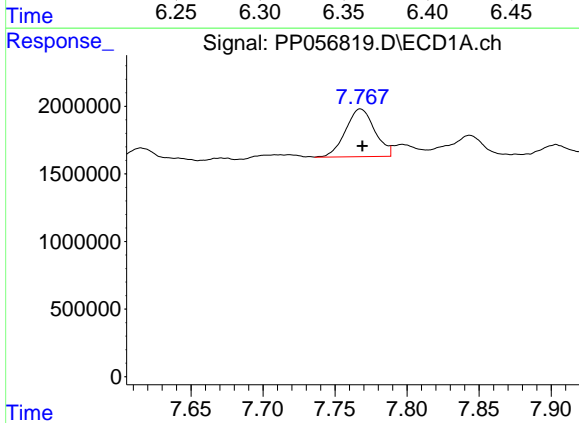
R.T.: 7.346 min
 Delta R.T.: 0.000 min
 Response: 1464450
 Conc: 23.99 ng/ml

Instrument :
 ECD_P
 ClientSampleId :



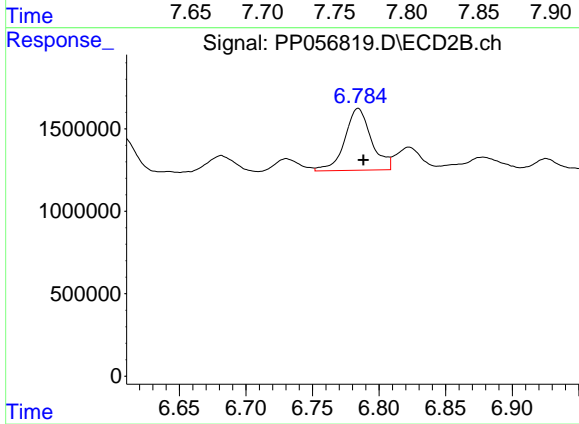
#29 AR-1254-4

R.T.: 6.362 min
 Delta R.T.: -0.003 min
 Response: 1074149
 Conc: 16.90 ng/ml



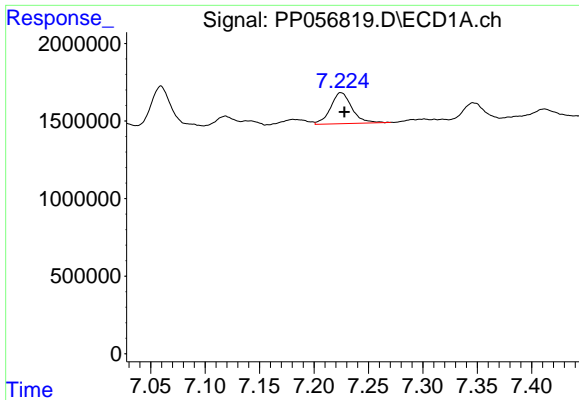
#30 AR-1254-5

R.T.: 7.768 min
 Delta R.T.: -0.001 min
 Response: 4987176
 Conc: 73.19 ng/ml



#30 AR-1254-5

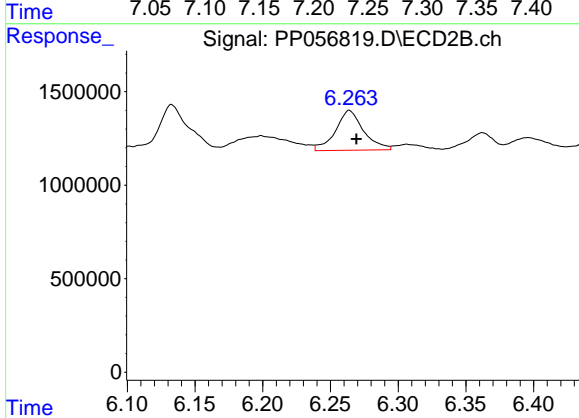
R.T.: 6.784 min
 Delta R.T.: -0.004 min
 Response: 5226612
 Conc: 49.71 ng/ml



#31 AR-1260-1

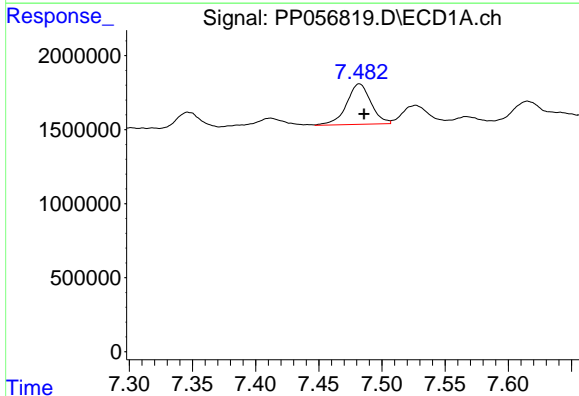
R.T.: 7.225 min
Delta R.T.: -0.003 min
Response: 2740278
Conc: 33.66 ng/ml

Instrument :
ECD_P
ClientSampleId :



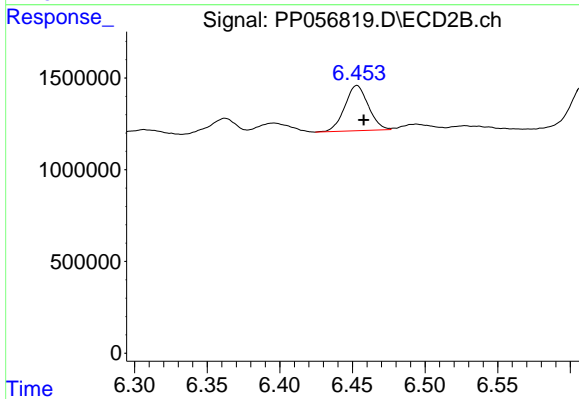
#31 AR-1260-1

R.T.: 6.264 min
Delta R.T.: -0.005 min
Response: 3079587
Conc: 32.20 ng/ml



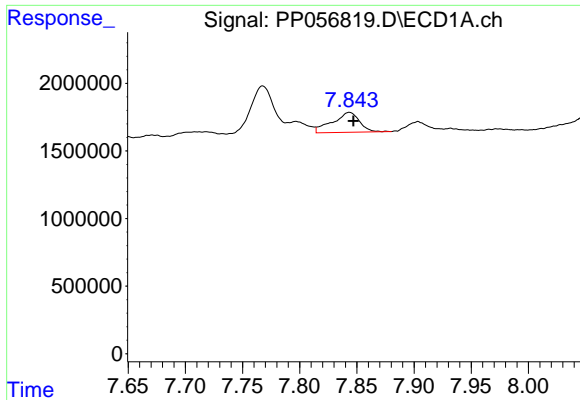
#32 AR-1260-2

R.T.: 7.482 min
Delta R.T.: -0.004 min
Response: 3674968
Conc: 43.07 ng/ml



#32 AR-1260-2

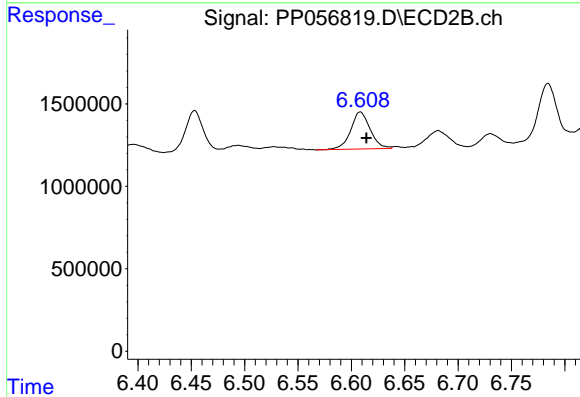
R.T.: 6.453 min
Delta R.T.: -0.005 min
Response: 2785089
Conc: 26.97 ng/ml



#33 AR-1260-3

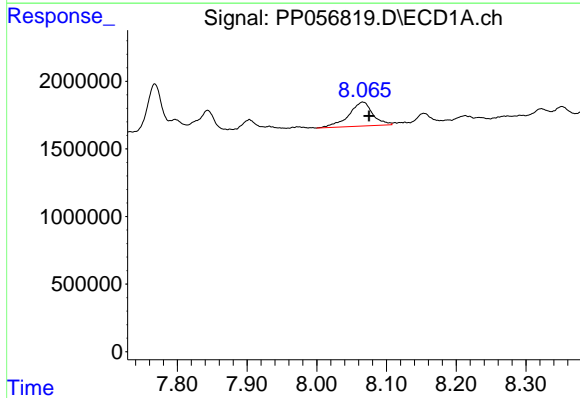
R.T.: 7.843 min
 Delta R.T.: -0.004 min
 Response: 2404775
 Conc: 34.43 ng/ml

Instrument :
 ECD_P
 ClientSampleId :



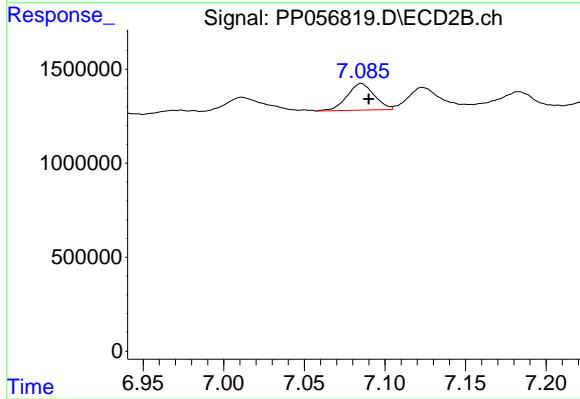
#33 AR-1260-3

R.T.: 6.608 min
 Delta R.T.: -0.006 min
 Response: 2858720
 Conc: 27.57 ng/ml



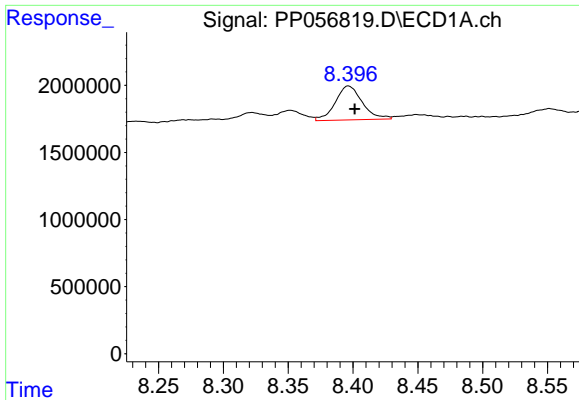
#34 AR-1260-4

R.T.: 8.066 min
 Delta R.T.: -0.009 min
 Response: 4249107
 Conc: 55.69 ng/ml



#34 AR-1260-4

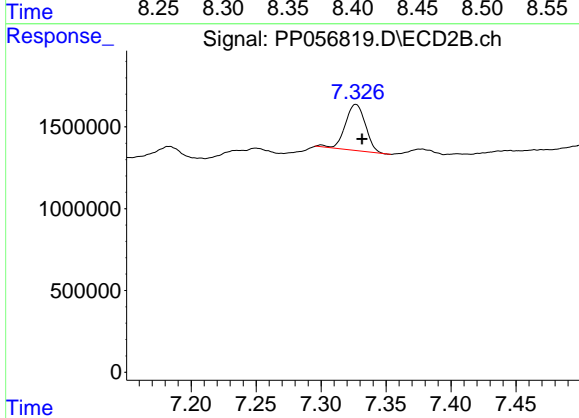
R.T.: 7.085 min
 Delta R.T.: -0.005 min
 Response: 1661750
 Conc: 19.46 ng/ml



#35 AR-1260-5

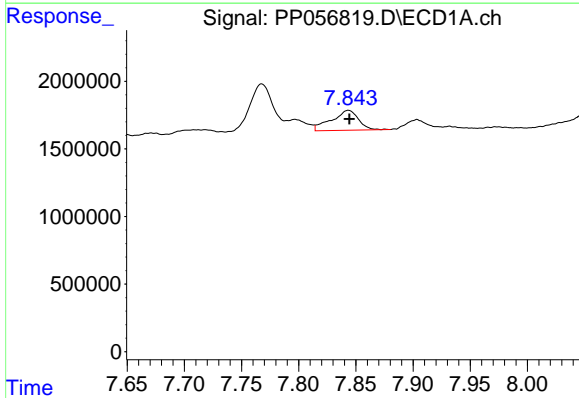
R.T.: 8.396 min
 Delta R.T.: -0.005 min
 Response: 3668582
 Conc: 28.98 ng/ml

Instrument :
 ECD_P
 ClientSampleId :



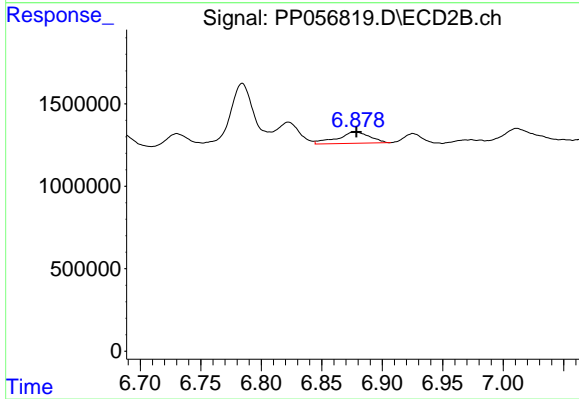
#35 AR-1260-5

R.T.: 7.327 min
 Delta R.T.: -0.005 min
 Response: 3018552
 Conc: 19.07 ng/ml



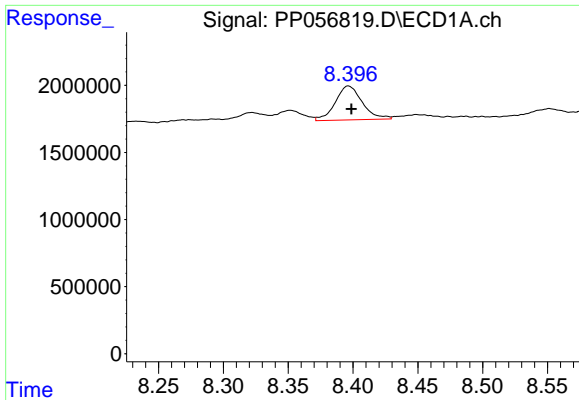
#36 AR-1262-1

R.T.: 7.843 min
 Delta R.T.: 0.000 min
 Response: 2404775
 Conc: 27.30 ng/ml



#36 AR-1262-1

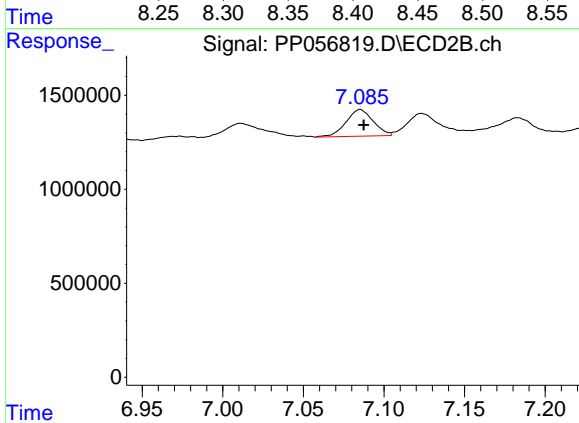
R.T.: 6.878 min
 Delta R.T.: 0.000 min
 Response: 1278394
 Conc: 27.32 ng/ml



#37 AR-1262-2

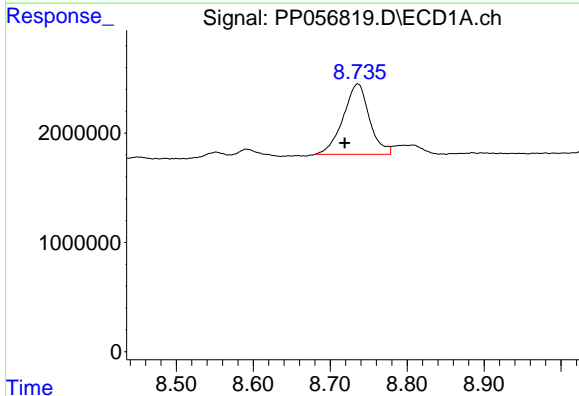
R.T.: 8.396 min
 Delta R.T.: -0.002 min
 Response: 3668582
 Conc: 28.33 ng/ml

Instrument :
 ECD_P
 ClientSampleId :



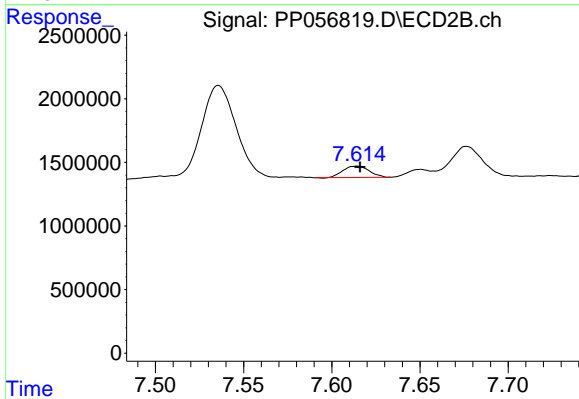
#37 AR-1262-2

R.T.: 7.085 min
 Delta R.T.: -0.002 min
 Response: 1661750
 Conc: 16.99 ng/ml



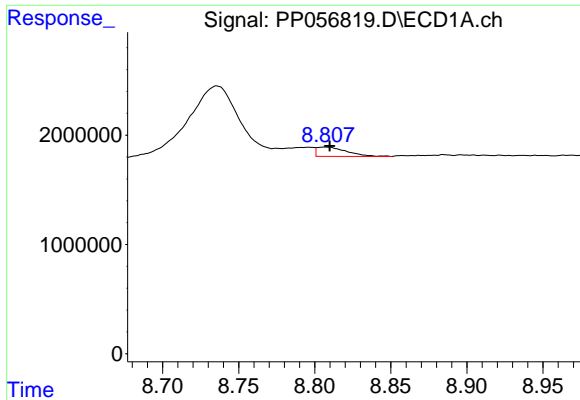
#38 AR-1262-3

R.T.: 8.736 min
 Delta R.T.: 0.017 min
 Response: 15271888
 Conc: 165.80 ng/ml



#38 AR-1262-3

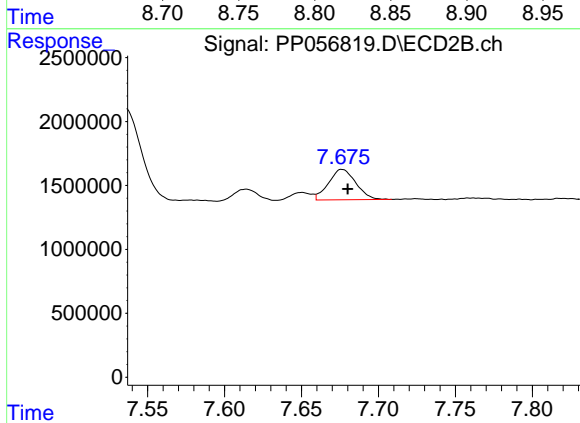
R.T.: 7.614 min
 Delta R.T.: -0.002 min
 Response: 916916
 Conc: 13.81 ng/ml



#39 AR-1262-4

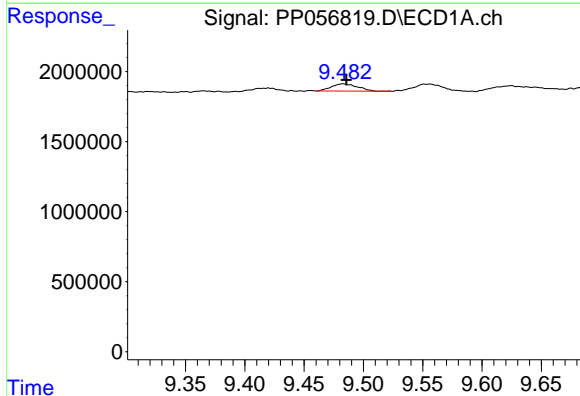
R.T.: 8.807 min
 Delta R.T.: -0.003 min
 Response: 1160537
 Conc: 25.56 ng/ml

Instrument :
 ECD_P
 ClientSampleId :



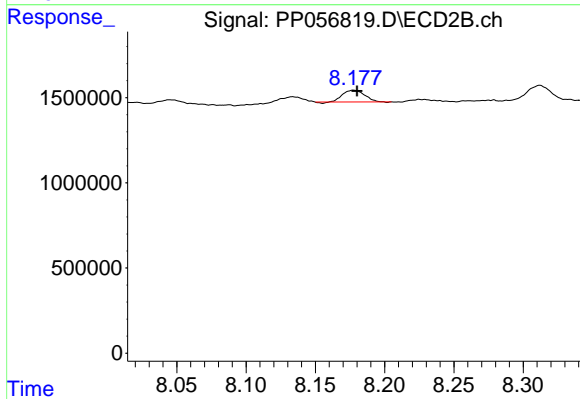
#39 AR-1262-4

R.T.: 7.676 min
 Delta R.T.: -0.004 min
 Response: 2931570
 Conc: 24.87 ng/ml



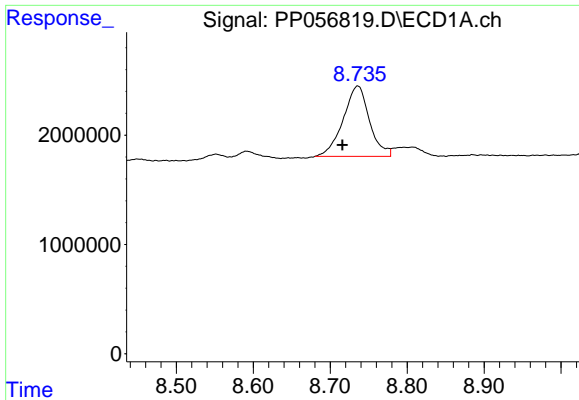
#40 AR-1262-5

R.T.: 9.483 min
 Delta R.T.: -0.003 min
 Response: 800566
 Conc: 19.93 ng/ml



#40 AR-1262-5

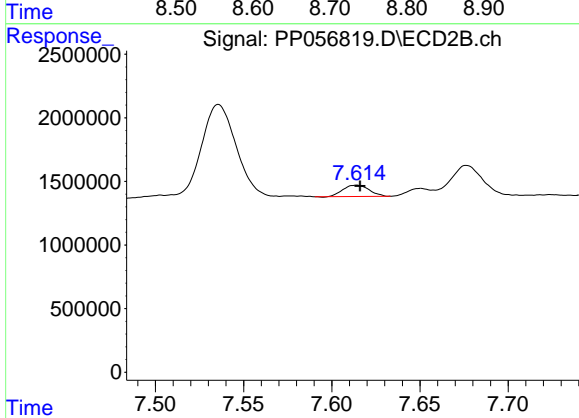
R.T.: 8.178 min
 Delta R.T.: -0.003 min
 Response: 751067
 Conc: 15.41 ng/ml



#41 AR-1268-1

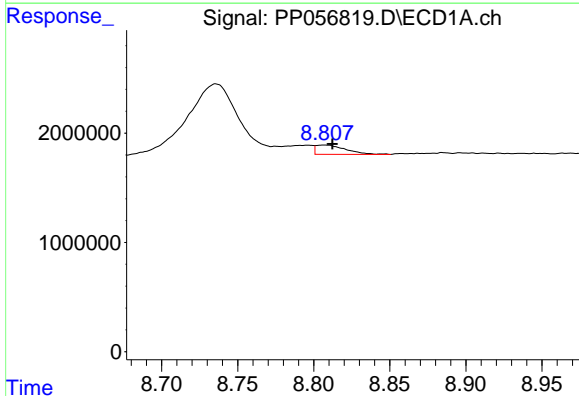
R.T.: 8.736 min
 Delta R.T.: 0.020 min
 Response: 15271888
 Conc: 81.99 ng/ml

Instrument :
 ECD_P
 ClientSampleId :



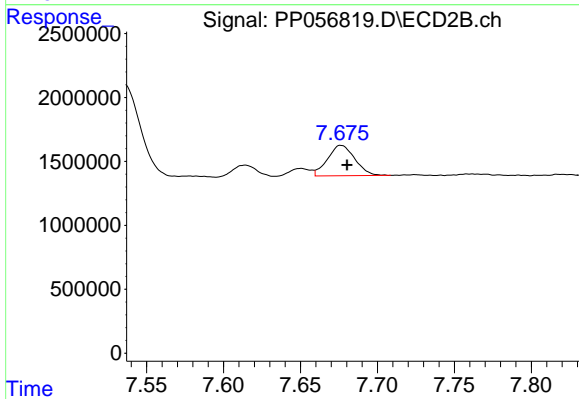
#41 AR-1268-1

R.T.: 7.614 min
 Delta R.T.: -0.002 min
 Response: 916916
 Conc: 4.14 ng/ml



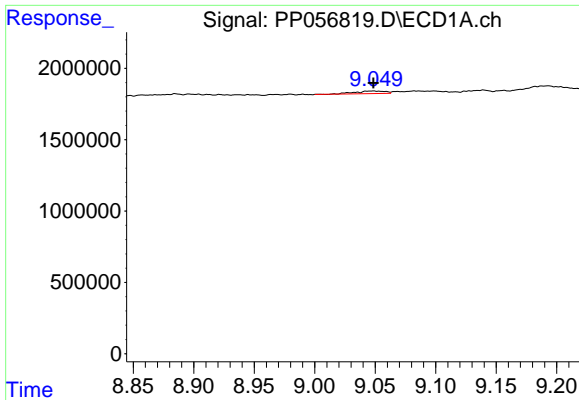
#42 AR-1268-2

R.T.: 8.807 min
 Delta R.T.: -0.005 min
 Response: 1160537
 Conc: 6.99 ng/ml



#42 AR-1268-2

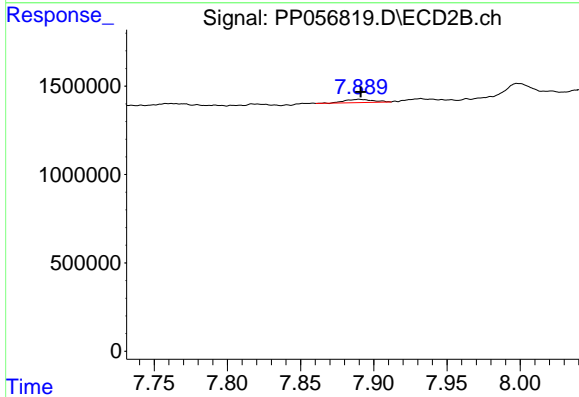
R.T.: 7.676 min
 Delta R.T.: -0.004 min
 Response: 2931570
 Conc: 15.10 ng/ml



#43 AR-1268-3

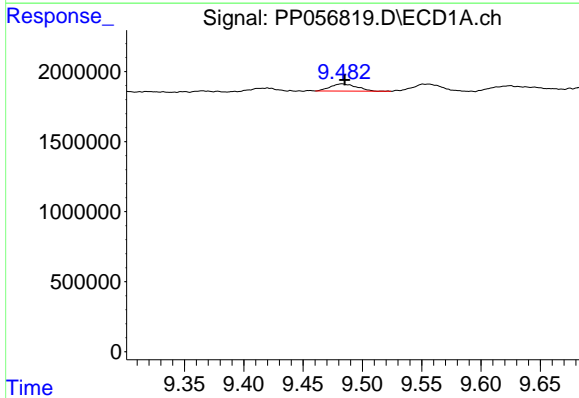
R.T.: 9.049 min
 Delta R.T.: 0.000 min
 Response: 299669
 Conc: 1.88 ng/ml

Instrument :
 ECD_P
 ClientSampleId :



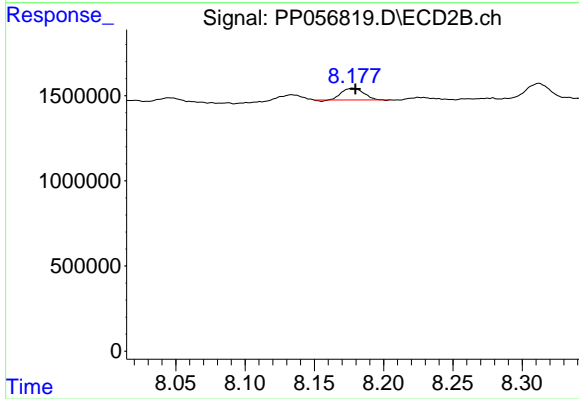
#43 AR-1268-3

R.T.: 7.890 min
 Delta R.T.: 0.000 min
 Response: 239920
 Conc: 1.21 ng/ml



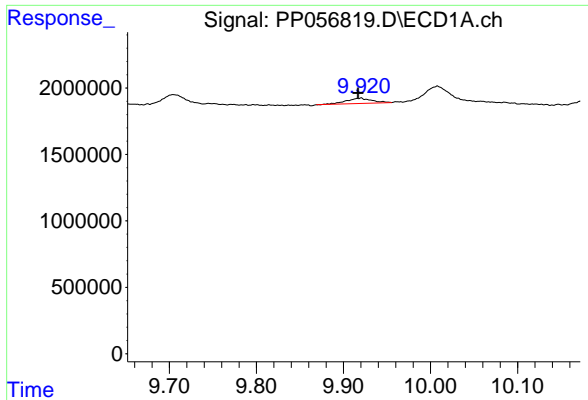
#44 AR-1268-4

R.T.: 9.483 min
 Delta R.T.: -0.003 min
 Response: 800566
 Conc: 17.24 ng/ml



#44 AR-1268-4

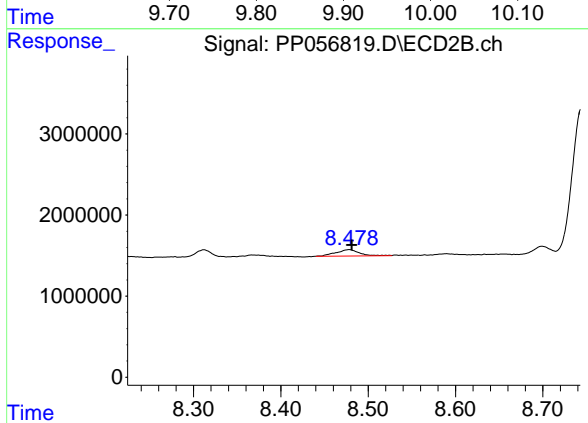
R.T.: 8.178 min
 Delta R.T.: -0.002 min
 Response: 751067
 Conc: 12.98 ng/ml



#45 AR-1268-5

R.T.: 9.920 min
Delta R.T.: 0.003 min
Response: 811507
Conc: 1.89 ng/ml

Instrument :
ECD_P
ClientSampleId :



#45 AR-1268-5

R.T.: 8.478 min
Delta R.T.: -0.003 min
Response: 1456539
Conc: 2.87 ng/ml