

Data Path : Z:\pestpcbsrv\HPCHEM1\ECD_P\Data\PP041123\
 Data File : PP056865.D
 Signal(s) : Signal #1: ECD1A.ch Signal #2: ECD2B.ch
 Acq On : 11 Apr 2023 19:04
 Operator : YP\AJ
 Sample : AR1660CCC500
 Misc :
 ALS Vial : 3 Sample Multiplier: 1

Instrument :
 ECD_P
ClientSampleId :
 AR1660CCC500

Integration File signal 1: autoint1.e
 Integration File signal 2: autoint2.e
 Quant Time: Apr 11 22:19:55 2023
 Quant Method : Z:\pestpcbsrv\HPCHEM1\ECD_P\methods\PP040623.M
 Quant Title : GC EXTRACTABLES
 QLast Update : Fri Apr 07 04:14:17 2023
 Response via : Initial Calibration
 Integrator: ChemStation

Volume Inj. : 2 µl
 Signal #1 Phase : ZB-MR1 Signal #2 Phase: ZB-MR2
 Signal #1 Info : 30Mx0.32mmx 0.50µ Signal #2 Info : 30M x 0.32mm x 0.25µm

Compound	RT#1	RT#2	Resp#1	Resp#2	ng/ml	ng/ml

System Monitoring Compounds						
1) SA Tetrachlo...	4.434	3.661	123.9E6	85598205	57.652	49.217
2) SA Decachlor...	10.275	8.746	84906672	83031719	64.868	52.809
Target Compounds						
3) L1 AR-1016-1	5.610	4.762	35916737	26907261	584.977	505.201
4) L1 AR-1016-2	5.633	4.781	51679629	37563471	579.529	506.566
5) L1 AR-1016-3	5.695	4.960	32650552	20721822	575.908	514.914
6) L1 AR-1016-4	5.795	5.001	25678653	18320871	573.444	505.607
7) L1 AR-1016-5	6.091	5.218	27081375	24159246	577.587	514.456
31) L7 AR-1260-1	7.226	6.264	47836635	48598439	587.662	508.119
32) L7 AR-1260-2	7.484	6.453	52261301	53983390	612.551	522.702
33) L7 AR-1260-3	7.846	6.610	41733650	52430444	597.597	505.573
34) L7 AR-1260-4	8.073	7.085	47045908	43599254	616.597	510.472
35) L7 AR-1260-5	8.399	7.327	81002905	81886986	639.966	517.410

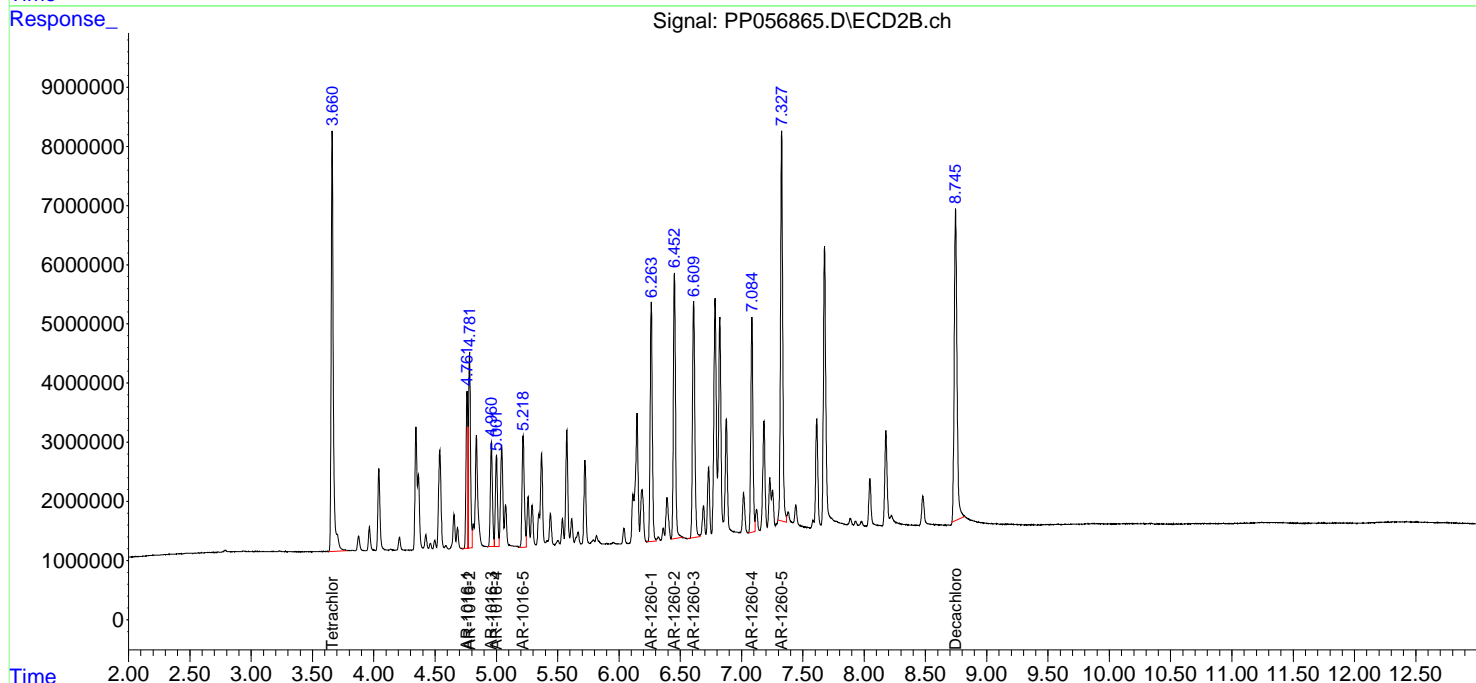
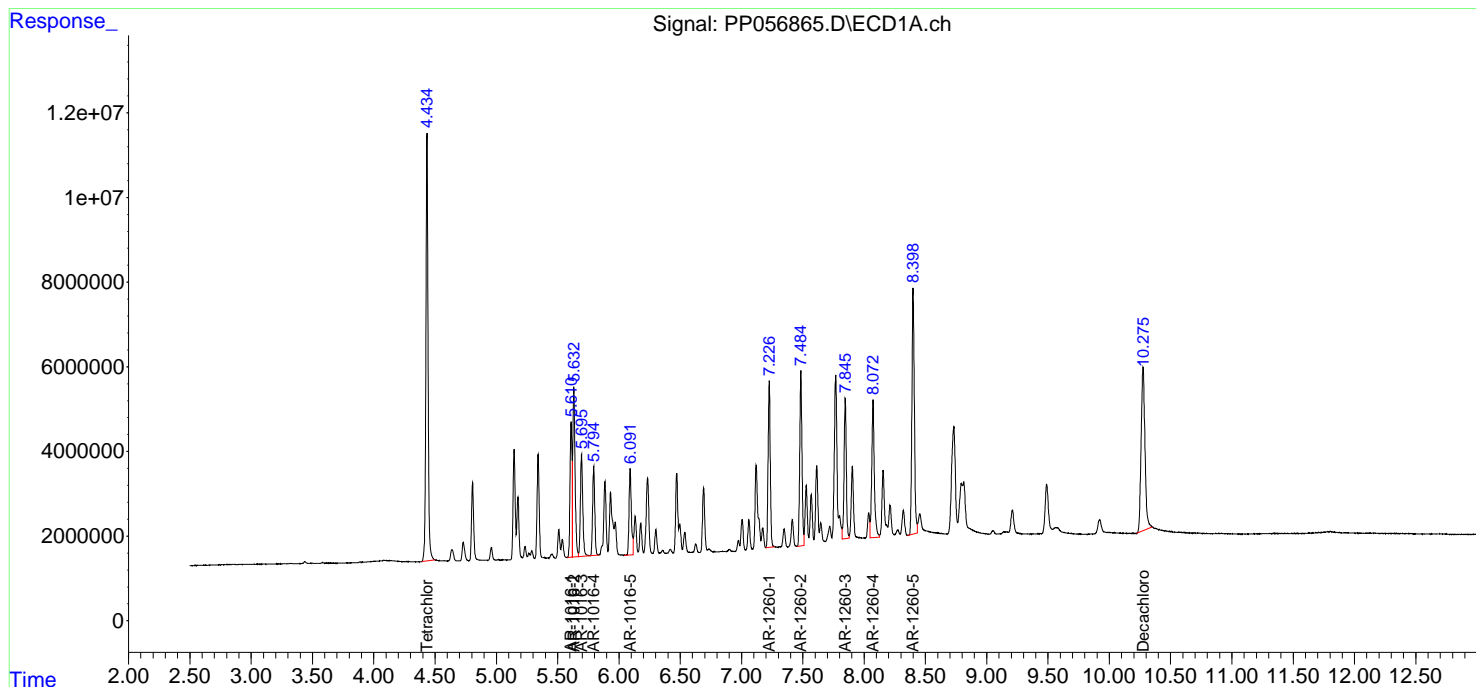
(f)=RT Delta > 1/2 Window (#)=Amounts differ by > 25% (m)=manual int.

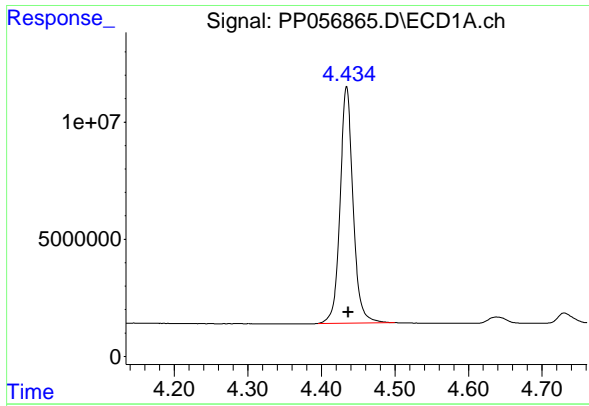
Data Path : Z:\pestpcbsrv\HPCHEM1\ECD_P\Data\PP041123\
 Data File : PP056865.D
 Signal(s) : Signal #1: ECD1A.ch Signal #2: ECD2B.ch
 Acq On : 11 Apr 2023 19:04
 Operator : YP\AJ
 Sample : AR1660CCC500
 Misc :
 ALS Vial : 3 Sample Multiplier: 1

Instrument :
 ECD_P
 ClientSampleId :
 AR1660CCC500

Integration File signal 1: autoint1.e
 Integration File signal 2: autoint2.e
 Quant Time: Apr 11 22:19:55 2023
 Quant Method : Z:\pestpcbsrv\HPCHEM1\ECD_P\methods\PP040623.M
 Quant Title : GC EXTRACTABLES
 QLast Update : Fri Apr 07 04:14:17 2023
 Response via : Initial Calibration
 Integrator: ChemStation

Volume Inj. : 2 µl
 Signal #1 Phase : ZB-MR1 Signal #2 Phase: ZB-MR2
 Signal #1 Info : 30Mx0.32mmx 0.50µm Signal #2 Info : 30M x 0.32mm x 0.25µm

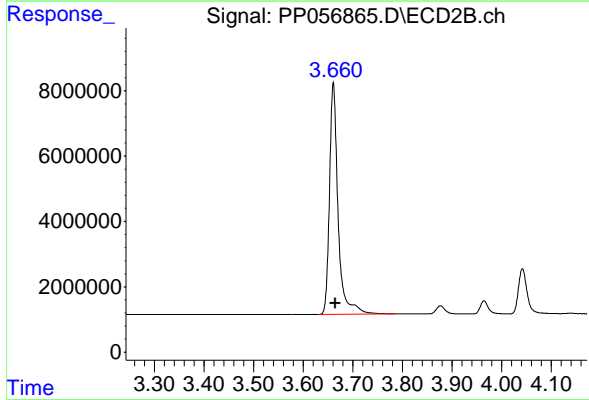




#1 Tetrachloro-m-xylene

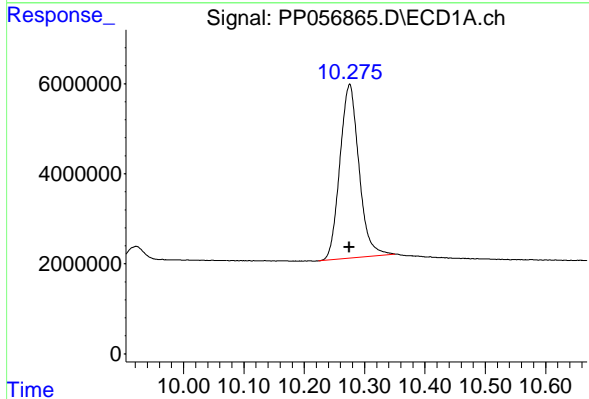
R.T.: 4.434 min
 Delta R.T.: -0.003 min
 Response: 123866702
 Conc: 57.65 ng/ml

Instrument :
 ECD_P
 ClientSampleId :
 AR1660CCC500



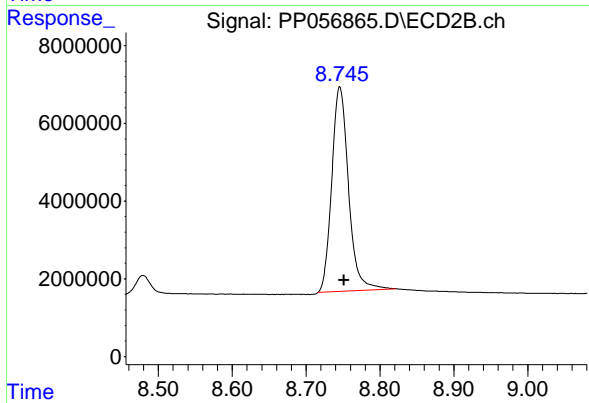
#1 Tetrachloro-m-xylene

R.T.: 3.661 min
 Delta R.T.: -0.004 min
 Response: 85598205
 Conc: 49.22 ng/ml



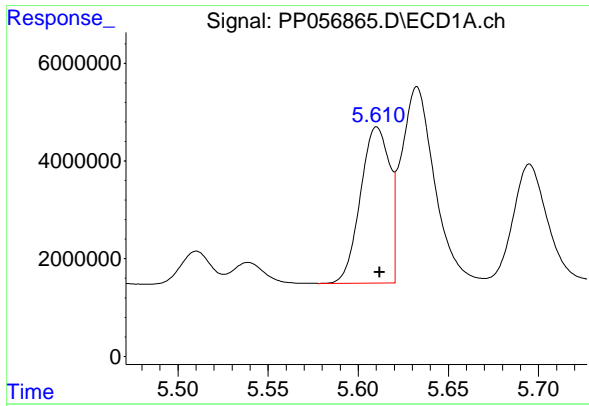
#2 Decachlorobiphenyl

R.T.: 10.275 min
 Delta R.T.: 0.000 min
 Response: 84906672
 Conc: 64.87 ng/ml



#2 Decachlorobiphenyl

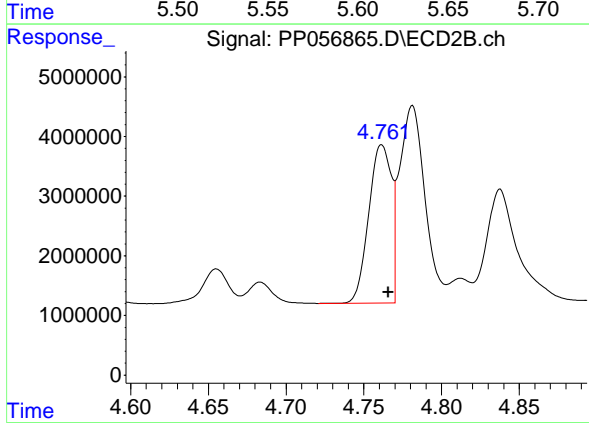
R.T.: 8.746 min
 Delta R.T.: -0.006 min
 Response: 83031719
 Conc: 52.81 ng/ml



#3 AR-1016-1

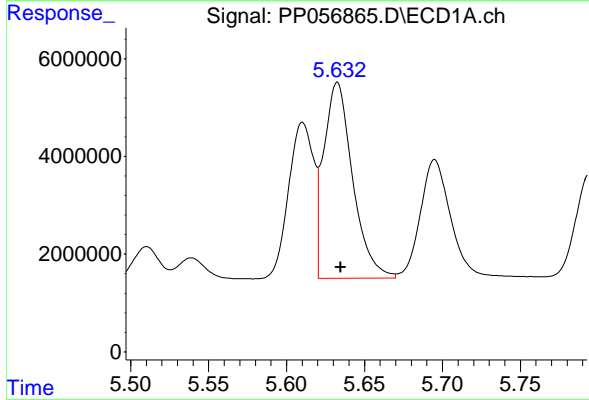
R.T.: 5.610 min
 Delta R.T.: -0.002 min
 Response: 35916737
 Conc: 584.98 ng/ml

Instrument :
 ECD_P
 ClientSampleId :
 AR1660CCC500



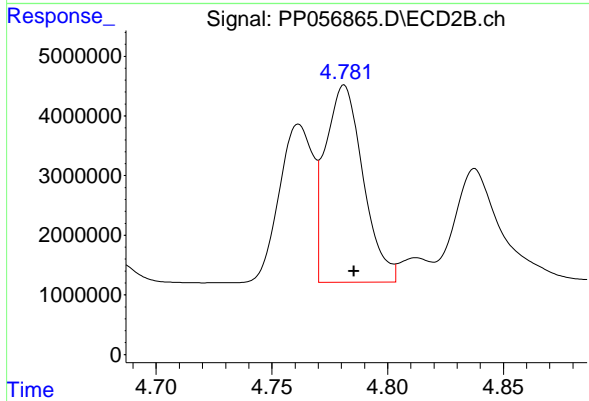
#3 AR-1016-1

R.T.: 4.762 min
 Delta R.T.: -0.004 min
 Response: 26907261
 Conc: 505.20 ng/ml



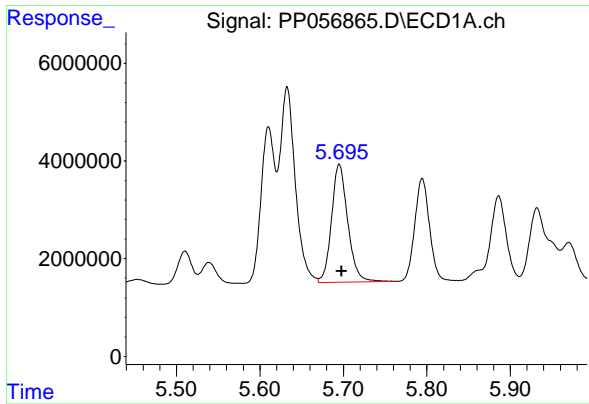
#4 AR-1016-2

R.T.: 5.633 min
 Delta R.T.: -0.002 min
 Response: 51679629
 Conc: 579.53 ng/ml



#4 AR-1016-2

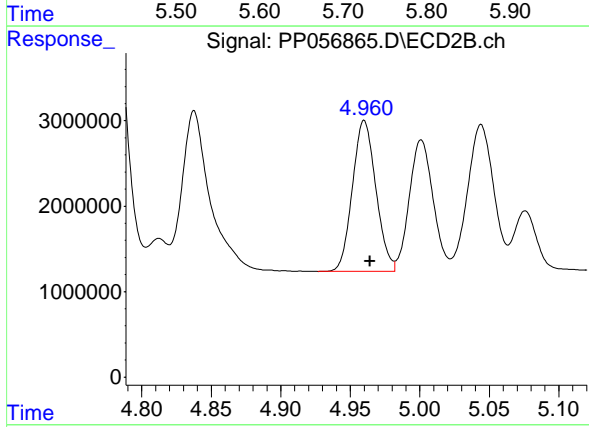
R.T.: 4.781 min
 Delta R.T.: -0.004 min
 Response: 37563471
 Conc: 506.57 ng/ml



#5 AR-1016-3

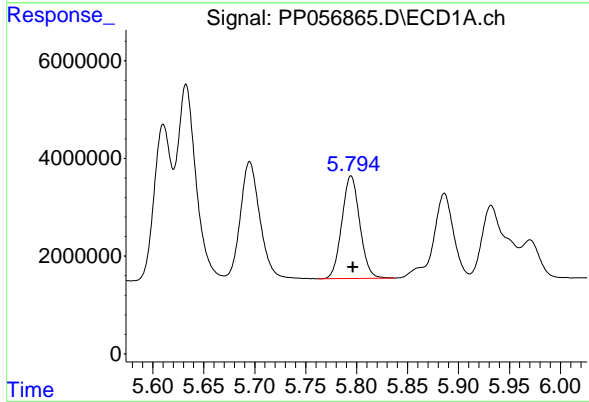
R.T.: 5.695 min
 Delta R.T.: -0.003 min
 Response: 32650552
 Conc: 575.91 ng/ml

Instrument :
 ECD_P
 ClientSampleId :
 AR1660CCC500



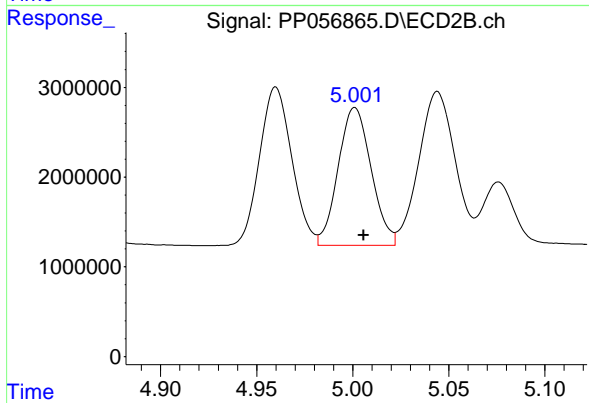
#5 AR-1016-3

R.T.: 4.960 min
 Delta R.T.: -0.004 min
 Response: 20721822
 Conc: 514.91 ng/ml



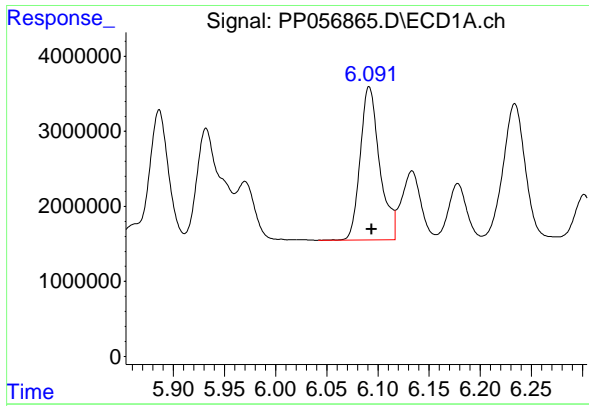
#6 AR-1016-4

R.T.: 5.795 min
 Delta R.T.: -0.002 min
 Response: 25678653
 Conc: 573.44 ng/ml



#6 AR-1016-4

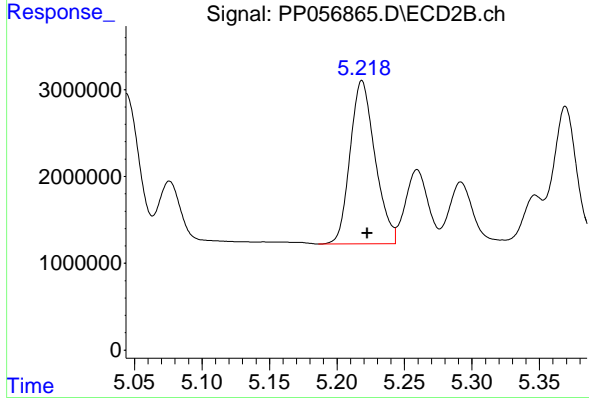
R.T.: 5.001 min
 Delta R.T.: -0.005 min
 Response: 18320871
 Conc: 505.61 ng/ml



#7 AR-1016-5

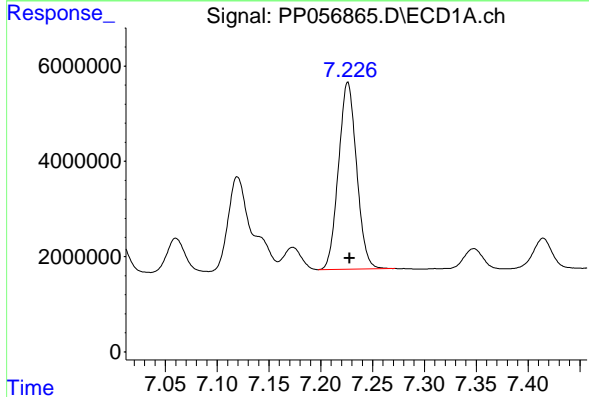
R.T.: 6.091 min
 Delta R.T.: -0.002 min
 Response: 27081375
 Conc: 577.59 ng/ml

Instrument :
 ECD_P
 ClientSampleId :
 AR1660CCC500



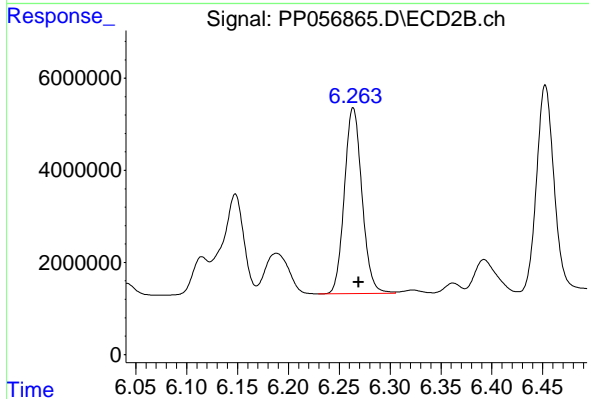
#7 AR-1016-5

R.T.: 5.218 min
 Delta R.T.: -0.004 min
 Response: 24159246
 Conc: 514.46 ng/ml



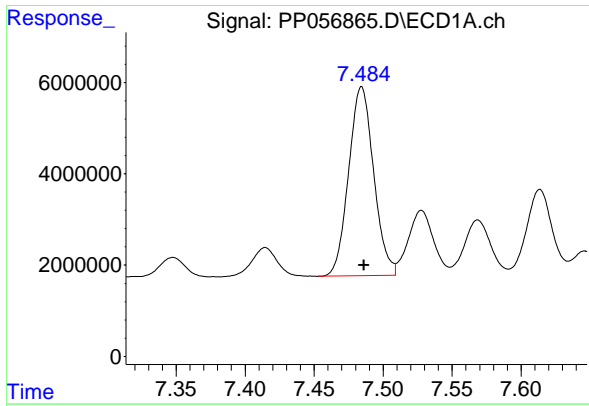
#31 AR-1260-1

R.T.: 7.226 min
 Delta R.T.: -0.002 min
 Response: 47836635
 Conc: 587.66 ng/ml



#31 AR-1260-1

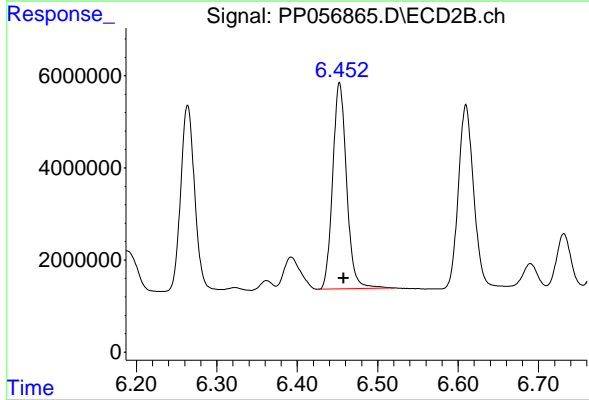
R.T.: 6.264 min
 Delta R.T.: -0.005 min
 Response: 48598439
 Conc: 508.12 ng/ml



#32 AR-1260-2

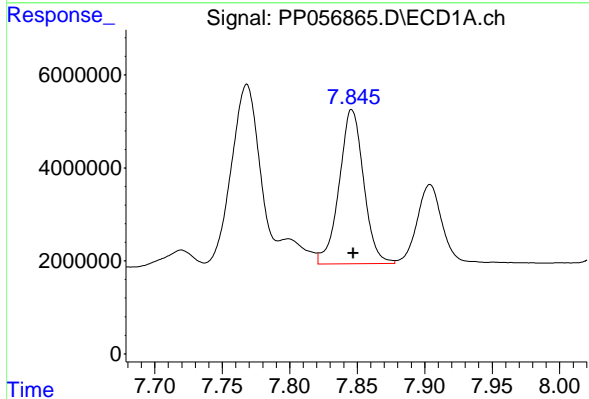
R.T.: 7.484 min
 Delta R.T.: -0.002 min
 Response: 52261301
 Conc: 612.55 ng/ml

Instrument :
 ECD_P
 ClientSampleId :
 AR1660CCC500



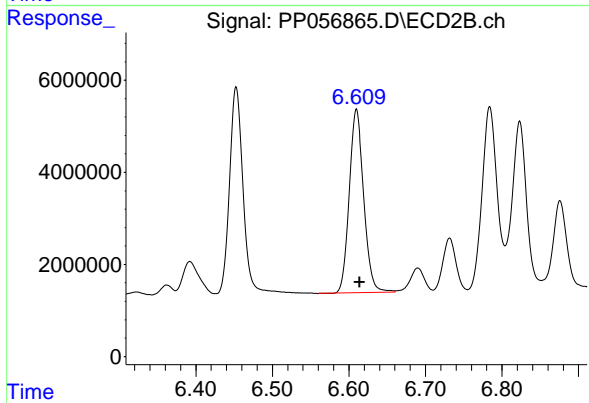
#32 AR-1260-2

R.T.: 6.453 min
 Delta R.T.: -0.005 min
 Response: 53983390
 Conc: 522.70 ng/ml



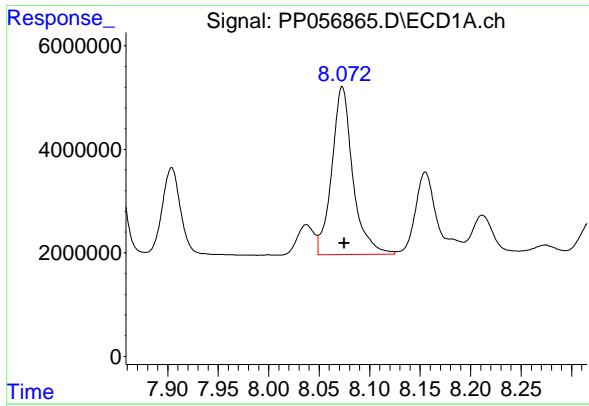
#33 AR-1260-3

R.T.: 7.846 min
 Delta R.T.: -0.001 min
 Response: 41733650
 Conc: 597.60 ng/ml



#33 AR-1260-3

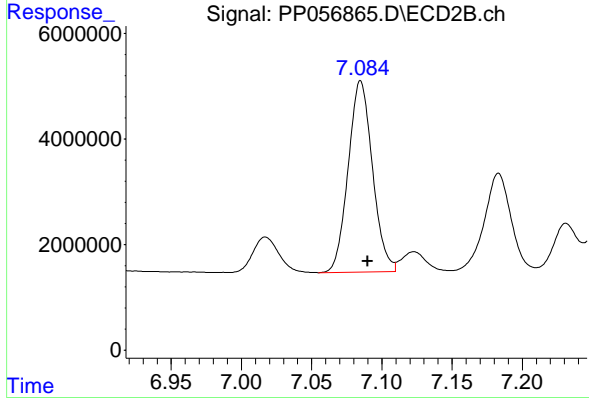
R.T.: 6.610 min
 Delta R.T.: -0.004 min
 Response: 52430444
 Conc: 505.57 ng/ml



#34 AR-1260-4

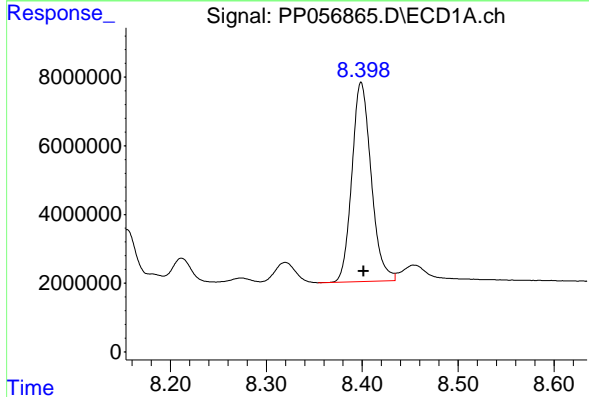
R.T.: 8.073 min
 Delta R.T.: -0.002 min
 Response: 47045908
 Conc: 616.60 ng/ml

Instrument :
 ECD_P
 ClientSampleId :
 AR1660CCC500



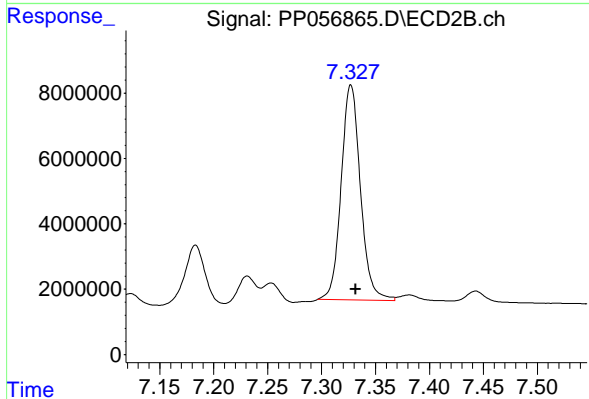
#34 AR-1260-4

R.T.: 7.085 min
 Delta R.T.: -0.005 min
 Response: 43599254
 Conc: 510.47 ng/ml



#35 AR-1260-5

R.T.: 8.399 min
 Delta R.T.: -0.002 min
 Response: 81002905
 Conc: 639.97 ng/ml



#35 AR-1260-5

R.T.: 7.327 min
 Delta R.T.: -0.004 min
 Response: 81886986
 Conc: 517.41 ng/ml