

Data Path : Z:\pestpcbsrv\HPCHEM1\ECD_P\Data\PP041124\
 Data File : PP064263.D
 Signal(s) : Signal #1: ECD1A.ch Signal #2: ECD2B.ch
 Acq On : 11 Apr 2024 19:20
 Operator : YP\AJ
 Sample : P2068-29 10X
 Misc :
 ALS Vial : 19 Sample Multiplier: 1

Instrument :
 ECD_P
 ClientSampleId :
 AC06-4

Integration File signal 1: autoint1.e
 Integration File signal 2: autoint2.e
 Quant Time: Apr 12 01:40:51 2024
 Quant Method : Z:\pestpcbsrv\HPCHEM1\ECD_P\methods\PP031924.M
 Quant Title : GC EXTRACTABLES
 QLast Update : Tue Mar 19 06:23:02 2024
 Response via : Initial Calibration
 Integrator: ChemStation

Volume Inj. : 2 µl
 Signal #1 Phase : ZB-MR1 Signal #2 Phase: ZB-MR2
 Signal #1 Info : 30Mx0.32mmx 0.50µ Signal #2 Info : 30M x 0.32mm x 0.25µm

Compound	RT#1	RT#2	Resp#1	Resp#2	ng/ml	ng/ml

System Monitoring Compounds						
1) SA Tetrachlo...	4.484	3.635	3570115	3423608	1.496	1.434
2) SA Decachlor...	10.351	8.664	6476283	5515728	2.551	2.041

Target Compounds

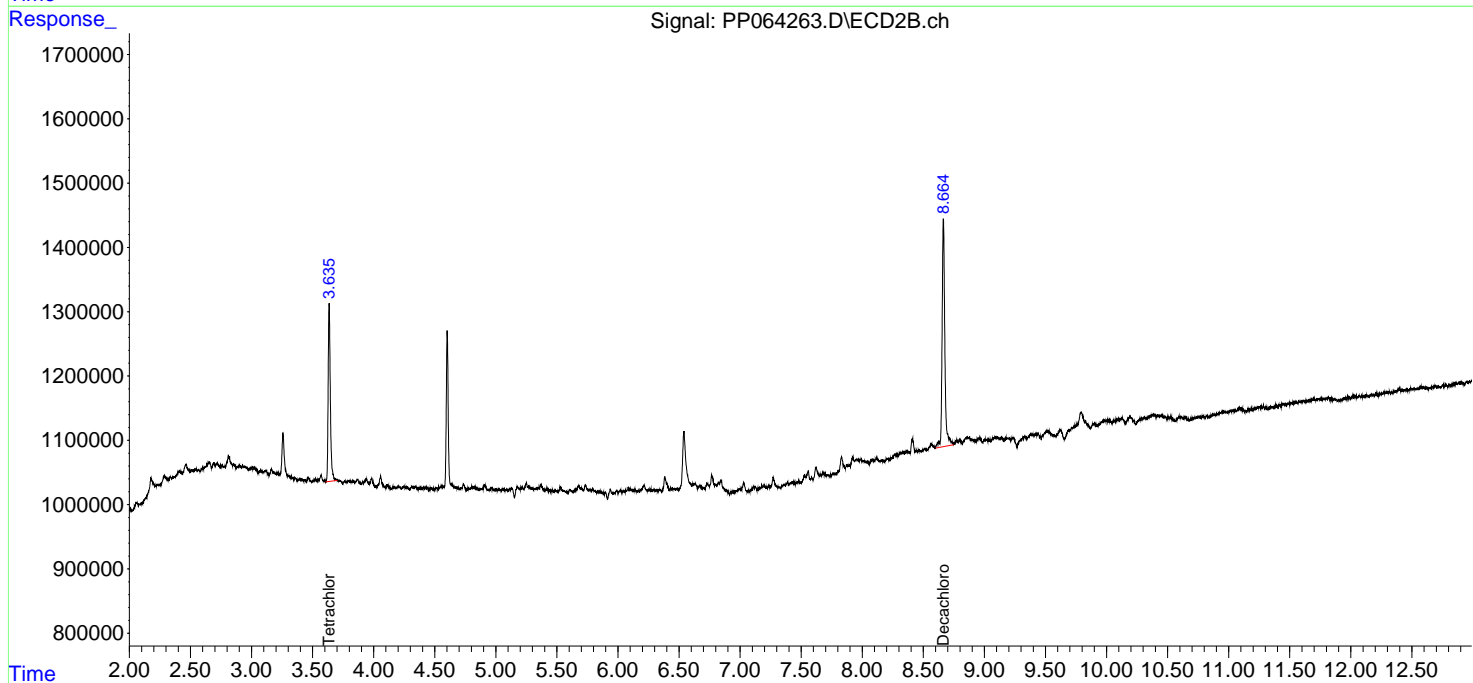
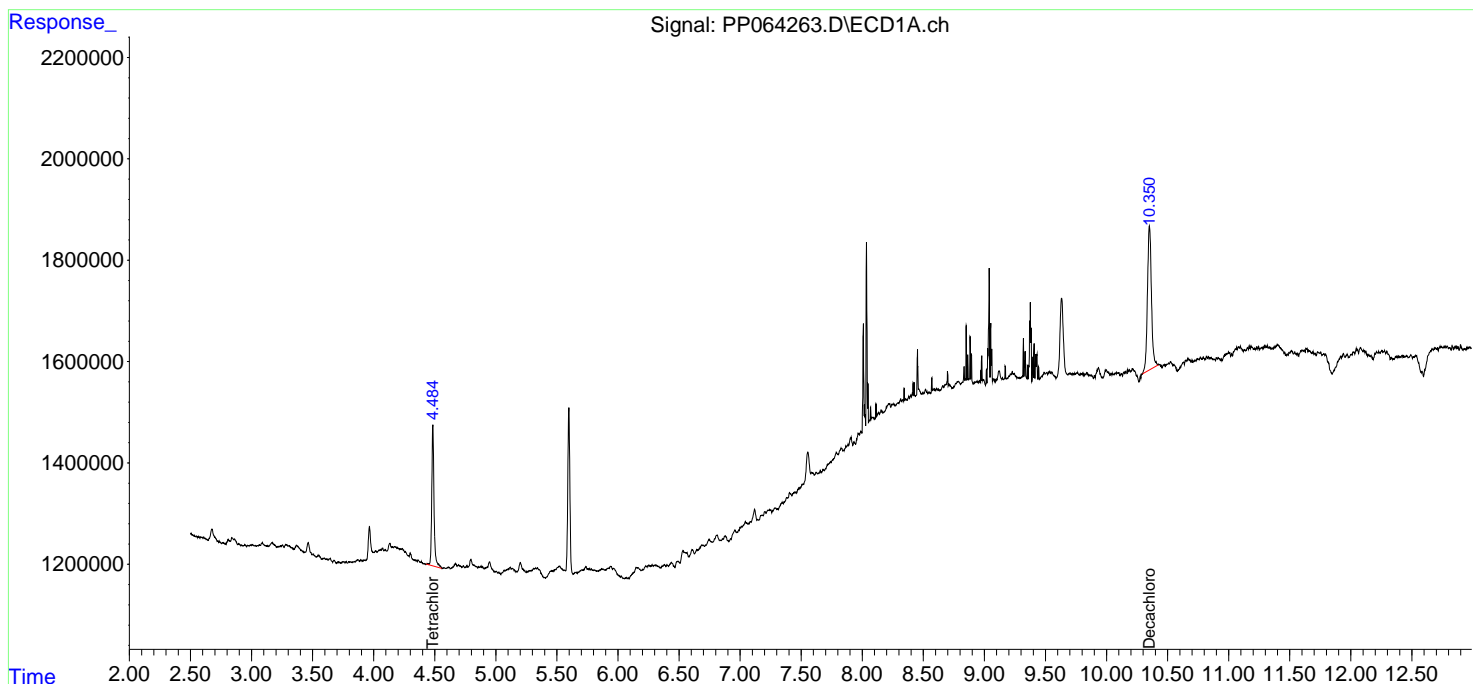
 (f)=RT Delta > 1/2 Window (#)=Amounts differ by > 25% (m)=manual int.

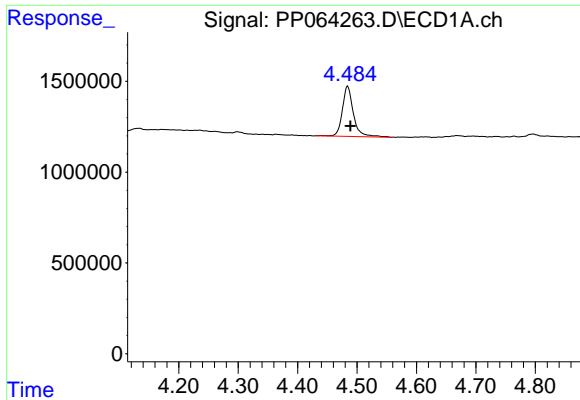
Data Path : Z:\pestpcbsrv\HPCHEM1\ECD_P\Data\PP041124\
 Data File : PP064263.D
 Signal(s) : Signal #1: ECD1A.ch Signal #2: ECD2B.ch
 Acq On : 11 Apr 2024 19:20
 Operator : YP\AJ
 Sample : P2068-29 10X
 Misc :
 ALS Vial : 19 Sample Multiplier: 1

Instrument :
 ECD_P
 ClientSampleId :
 AC06-4

Integration File signal 1: autoint1.e
 Integration File signal 2: autoint2.e
 Quant Time: Apr 12 01:40:51 2024
 Quant Method : Z:\pestpcbsrv\HPCHEM1\ECD_P\methods\PP031924.M
 Quant Title : GC EXTRACTABLES
 QLast Update : Tue Mar 19 06:23:02 2024
 Response via : Initial Calibration
 Integrator: ChemStation

Volume Inj. : 2 µl
 Signal #1 Phase : ZB-MR1 Signal #2 Phase: ZB-MR2
 Signal #1 Info : 30Mx0.32mmx 0.50µ Signal #2 Info : 30M x 0.32mm x 0.25µm

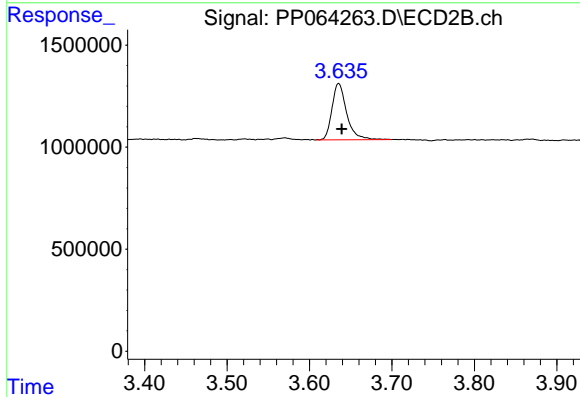




#1 Tetrachloro-m-xylene

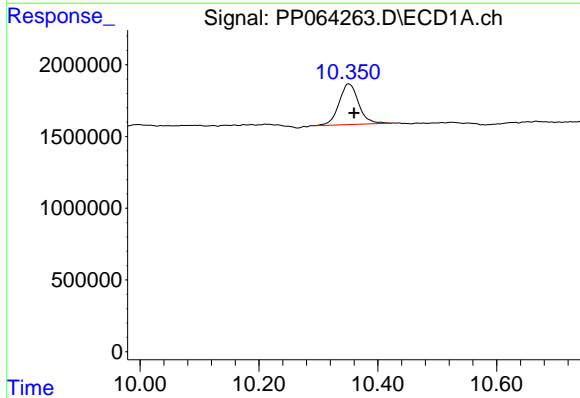
R.T.: 4.484 min
 Delta R.T.: -0.005 min
 Response: 3570115
 Conc: 1.50 ng/ml

Instrument :
 ECD_P
 ClientSampleId :
 AC06-4



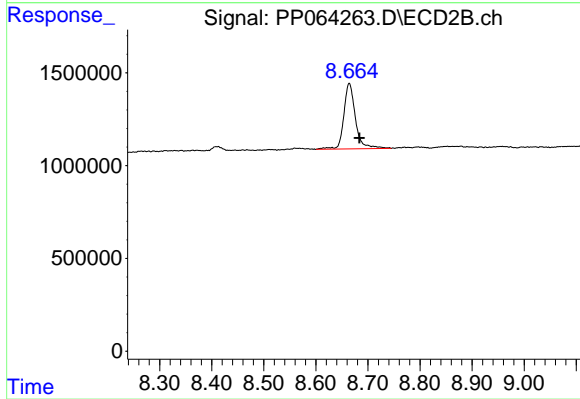
#1 Tetrachloro-m-xylene

R.T.: 3.635 min
 Delta R.T.: -0.004 min
 Response: 3423608
 Conc: 1.43 ng/ml



#2 Decachlorobiphenyl

R.T.: 10.351 min
 Delta R.T.: -0.009 min
 Response: 6476283
 Conc: 2.55 ng/ml



#2 Decachlorobiphenyl

R.T.: 8.664 min
 Delta R.T.: -0.019 min
 Response: 5515728
 Conc: 2.04 ng/ml