

Data Path : P:\HPCHEM1\ECD P\Data\PP041218\
 Data File : PP025017.D
 Signal(s) : Signal #1: ECD1A.CH Signal #2: ECD2B.CH
 Acq On : 12 Apr 2018 10:11
 Operator : UA/AJ
 Sample : HSTDCCC750
 Misc :
 ALS Vial : 3 Sample Multiplier: 1

Instrument :
 ECD_P
ClientSampleId :
 HSTDCCC750

Manual Integrations
APPROVED
 ugo
 4/13/2018 10:48:45 AM

Integration File signal 1: autoint1.e
 Integration File signal 2: autoint2.e
 Quant Time: Apr 13 07:09:07 2018
 Quant Method : P:\HPCHEM1\ECD_P\methods\PP032918.M
 Quant Title : 8080.M
 QLast Update : Mon Apr 02 02:18:04 2018
 Response via : Initial Calibration
 Integrator: ChemStation 6890 Scale Mode: Large solvent peaks clipped

Volume Inj. : 2 ul
 Signal #1 Phase : Rtx-CLPesticides Signal #2 Phase: Rtx-CLPesticides2
 Signal #1 Info : 30M x 0.32mm x0.5 Signal #2 Info : 30M x 0.32mm x 0.25µm

Compound	RT#1	RT#2	Resp#1	Resp#2	nq/ml	nq/ml

System Monitoring Compounds						
4) S 2,4-DCAA	11.486	11.171	455.9E6	487.3E6	861.345m	821.162
Target Compounds						
1) T Dalapon	2.952	2.474	510.0E6	528.4E6	661.142	624.238
2) T 3,5-DICHL...	9.893	9.294	656.9E6	620.8E6	796.992	770.058
3) T 4-Nitroph...	11.066	10.331	260.4E6	253.2E6	711.301	709.479
5) T DICAMBA	11.806	11.466	1978.0E6	1783.9E6	801.399	772.307
6) T MCPP	12.145	11.675	119.9E6	104.0E6	76.846	72.515
7) T MCPA	12.400	12.066	183.2E6	169.2E6	78.763	80.192
8) T DICHLORPROP	12.996	12.578	476.9E6	446.3E6	801.597	757.752
9) T 2,4-D	13.358	13.062	569.9E6	576.6E6	777.978	759.566
10) T Pentachlo...	13.743	13.613	7726.0E6	6747.2E6	823.099m	760.189
11) T 2,4,5-TP ...	14.616	14.216	3272.7E6	2865.8E6	775.856	771.126
12) T 2,4,5-T	15.017	14.841	2914.2E6	2207.4E6	799.770	739.915
13) T 2,4-DB	15.763	15.439	367.4E6	323.4E6	809.619	764.032
14) T DINOSEB	17.235	15.836	1815.1E6	1491.2E6	654.843	609.874
15) T Picloram	17.041	17.172	3847.0E6	3058.5E6	657.307	635.554
16) T DCPA	17.602	17.053	3999.4E6	3402.2E6	826.134m	786.955

(f)=RT Delta > 1/2 Window (#)=Amounts differ by > 25% (m)=manual int.

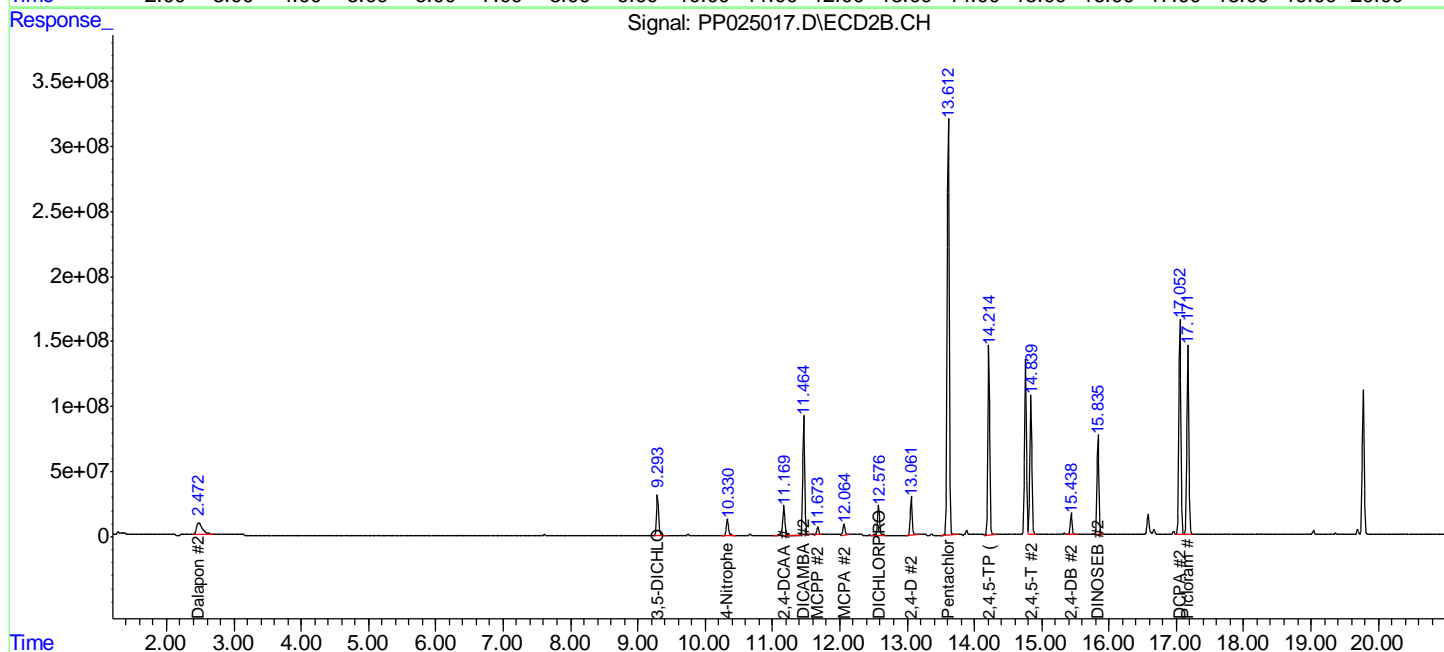
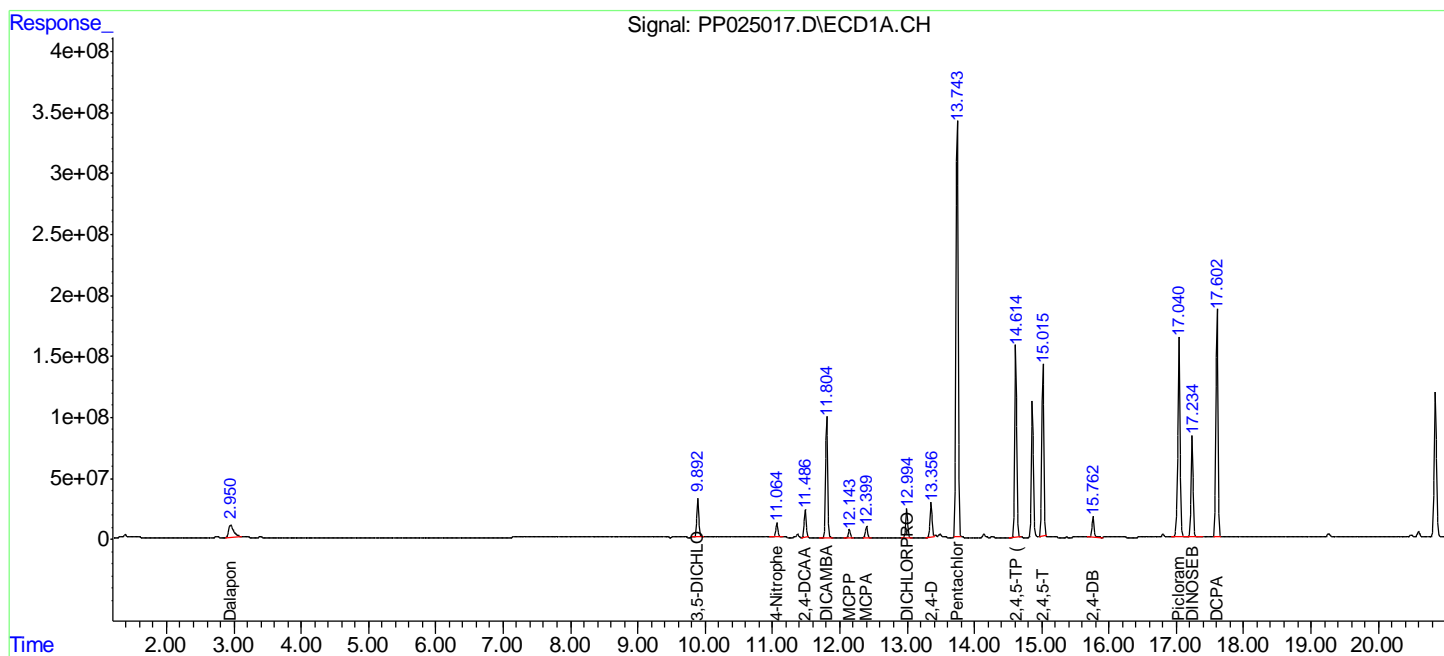
Data Path : P:\HPCHEM1\ECD P\Data\PP041218\
 Data File : PP025017.D
 Signal(s) : Signal #1: ECD1A.CH Signal #2: ECD2B.CH
 Acq On : 12 Apr 2018 10:11
 Operator : UA/AJ
 Sample : HSTDCCC750
 Misc :
 ALS Vial : 3 Sample Multiplier: 1

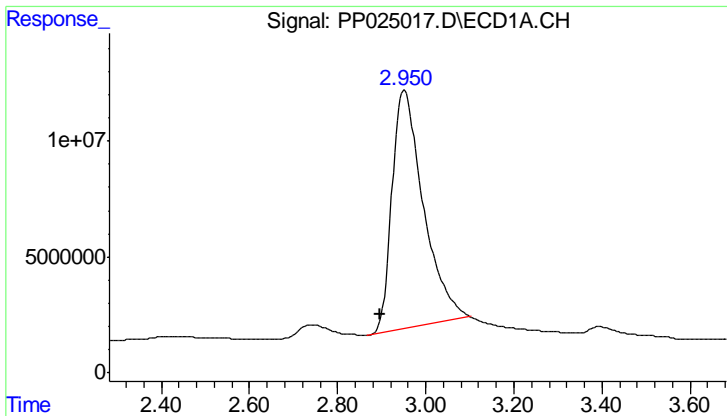
Instrument :
 ECD_P
 Client Sampled :
 HSTDCCC750

Manual Integrations
APPROVED
 ugo
 4/13/2018 10:48:45 AM

Integration File signal 1: autoint1.e
 Integration File signal 2: autoint2.e
 Quant Time: Apr 13 07:09:07 2018
 Quant Method : P:\HPCHEM1\ECD_P\methods\PP032918.M
 Quant Title : 8080.M
 QLast Update : Mon Apr 02 02:18:04 2018
 Response via : Initial Calibration
 Integrator: ChemStation 6890 Scale Mode: Large solvent peaks clipped

Volume Inj. : 2 ul
 Signal #1 Phase : Rtx-CLPesticides Signal #2 Phase: Rtx-CLPesticides2
 Signal #1 Info : 30M x 0.32mm x0.5 Signal #2 Info : 30M x 0.32mm x 0.25um





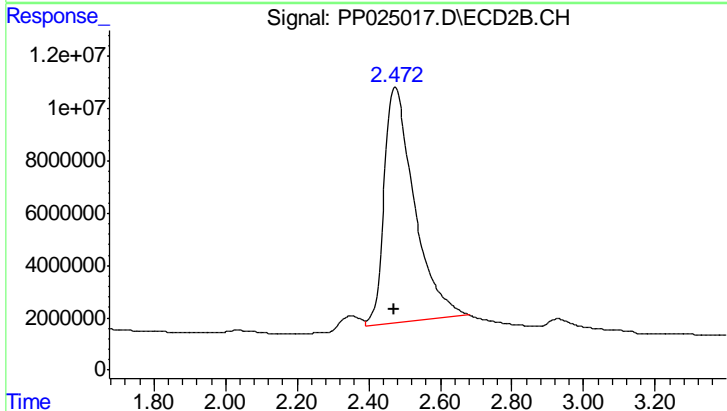
#1 Dalapon

R.T.: 2.952 min
 Delta R.T.: 0.056 min
 Response: 509984598
 Conc: 661.14 ng/ml

Instrument :
 ECD_P
 ClientSampleId :
 HSTDCCC750

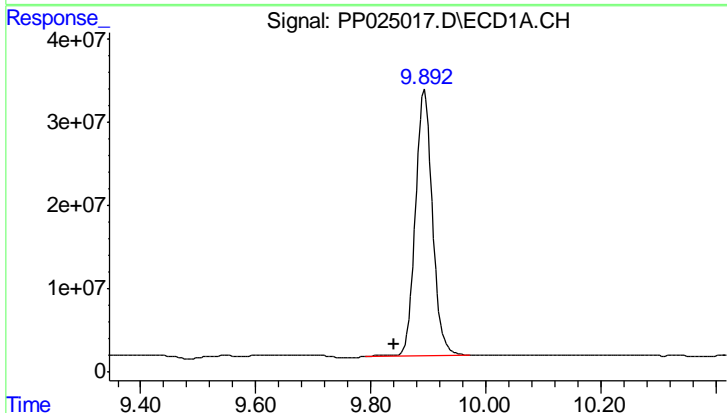
Manual Integrations
 APPROVED

ugo
 4/13/2018 10:48:45 AM



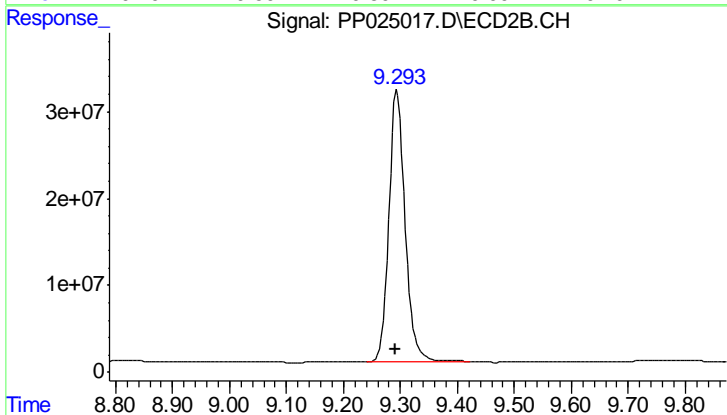
#1 Dalapon

R.T.: 2.474 min
 Delta R.T.: 0.003 min
 Response: 528417708
 Conc: 624.24 ng/ml



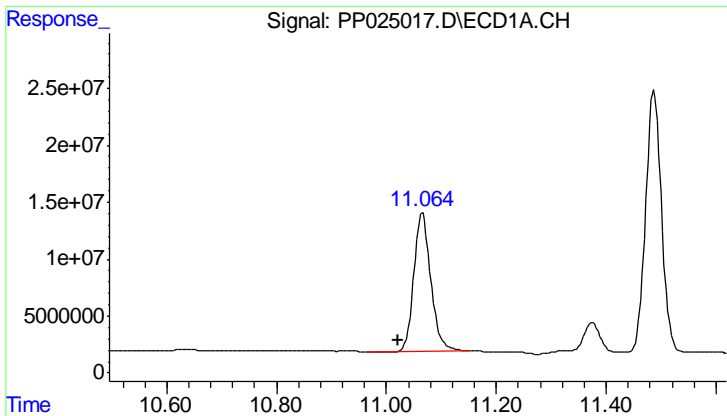
#2 3,5-DICHLOROBENZOIC ACID

R.T.: 9.893 min
 Delta R.T.: 0.052 min
 Response: 656851027
 Conc: 796.99 ng/ml



#2 3,5-DICHLOROBENZOIC ACID

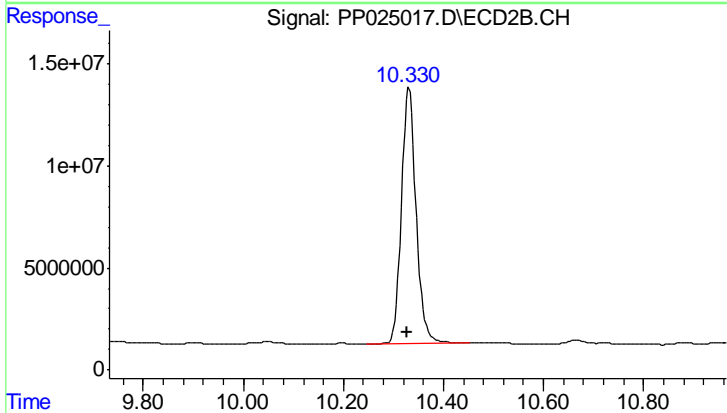
R.T.: 9.294 min
 Delta R.T.: 0.003 min
 Response: 620772838
 Conc: 770.06 ng/ml



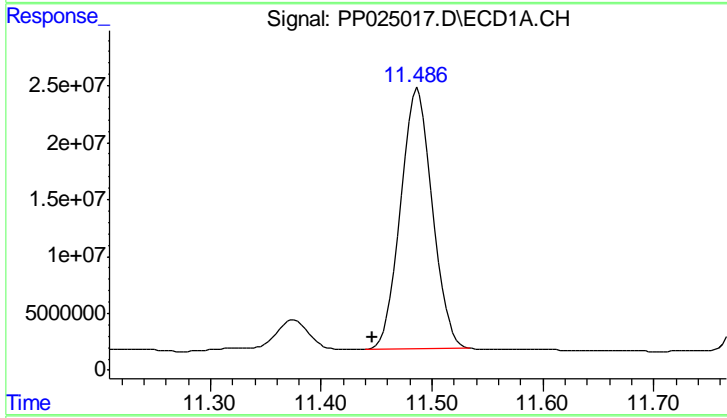
#3 4-Nitrophenol
 R.T.: 11.066 min
 Delta R.T.: 0.045 min
 Response: 260410748
 Conc: 711.30 ng/ml

Instrument :
 ECD_P
 ClientSampleId :
 HSTDCCC750

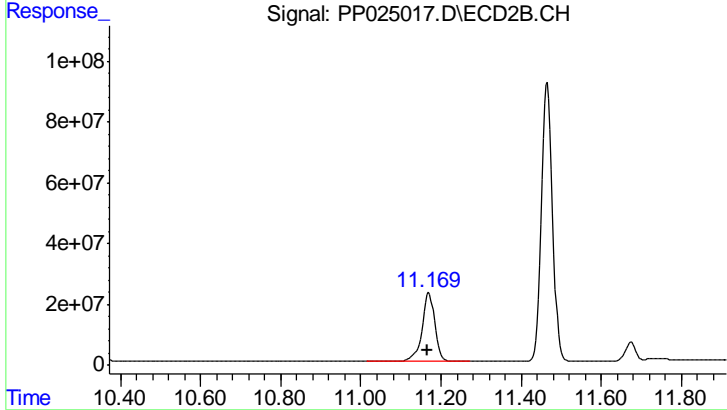
Manual Integrations
 APPROVED
 ugo
 4/13/2018 10:48:45 AM



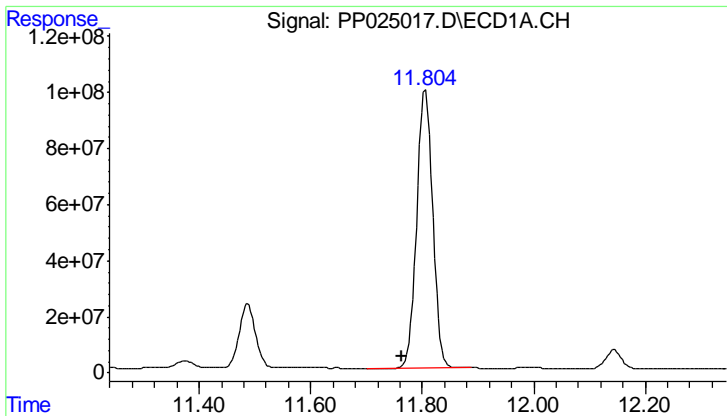
#3 4-Nitrophenol
 R.T.: 10.331 min
 Delta R.T.: 0.004 min
 Response: 253191645
 Conc: 709.48 ng/ml



#4 2,4-DCAA
 R.T.: 11.486 min
 Delta R.T.: 0.040 min
 Response: 455886555
 Conc: 861.34 ng/ml m



#4 2,4-DCAA
 R.T.: 11.171 min
 Delta R.T.: 0.004 min
 Response: 487288317
 Conc: 821.16 ng/ml



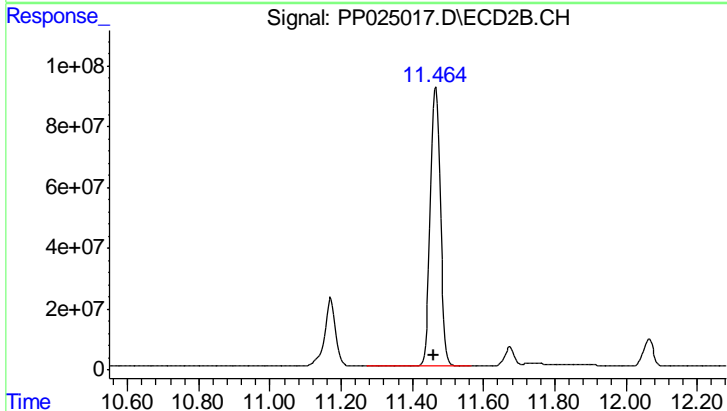
#5 DICAMBA

R.T.: 11.806 min
 Delta R.T.: 0.041 min
 Response: 1977998168
 Conc: 801.40 ng/ml

Instrument :
 ECD_P
 ClientSampled :
 HSTDCCC750

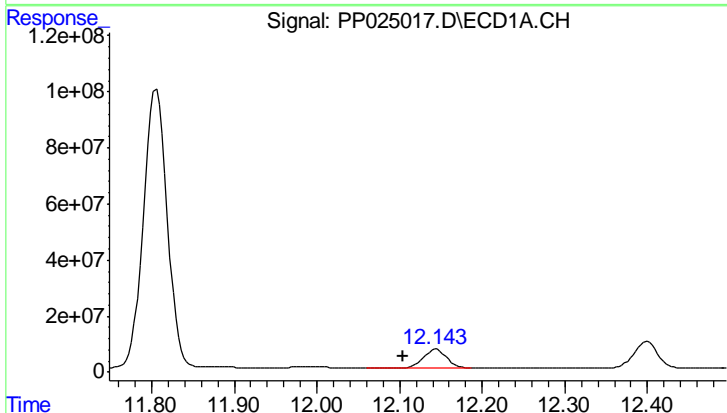
Manual Integrations
 APPROVED

ugo
 4/13/2018 10:48:45 AM



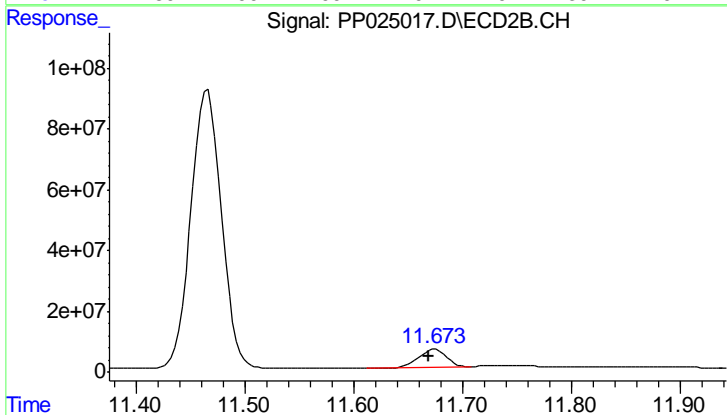
#5 DICAMBA

R.T.: 11.466 min
 Delta R.T.: 0.005 min
 Response: 1783860673
 Conc: 772.31 ng/ml



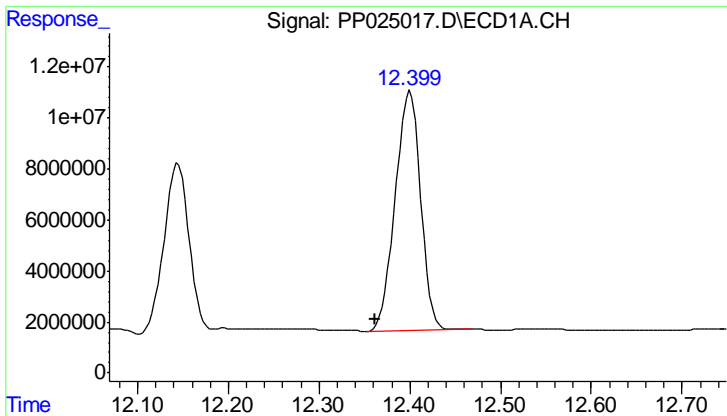
#6 MCPP

R.T.: 12.145 min
 Delta R.T.: 0.040 min
 Response: 119858587
 Conc: 76.85 ug/ml



#6 MCPP

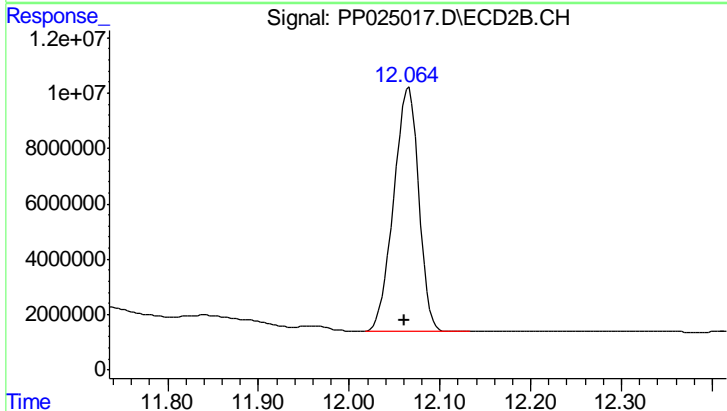
R.T.: 11.675 min
 Delta R.T.: 0.006 min
 Response: 103979699
 Conc: 72.52 ug/ml



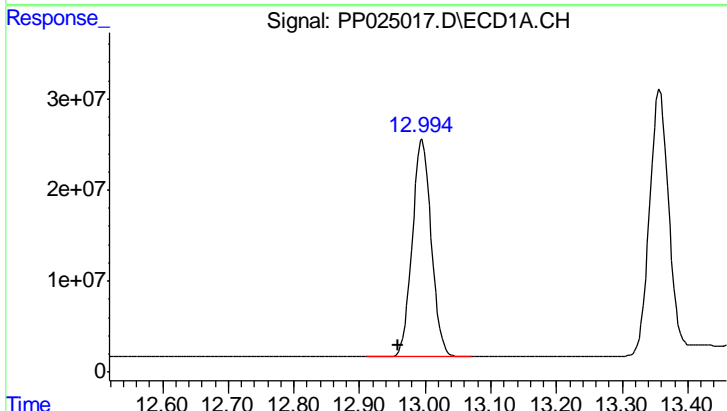
#7 MCPA
 R.T.: 12.400 min
 Delta R.T.: 0.039 min
 Response: 183192713
 Conc: 78.76 ug/ml

Instrument :
 ECD_P
ClientSampled :
 HSTDCCC750

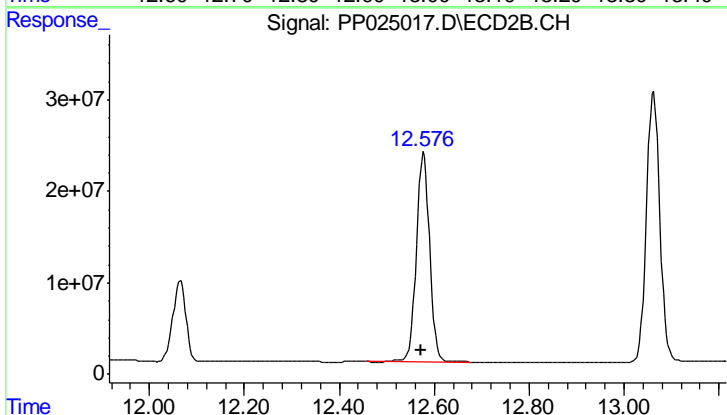
Manual Integrations
APPROVED
 ugo
 4/13/2018 10:48:45 AM



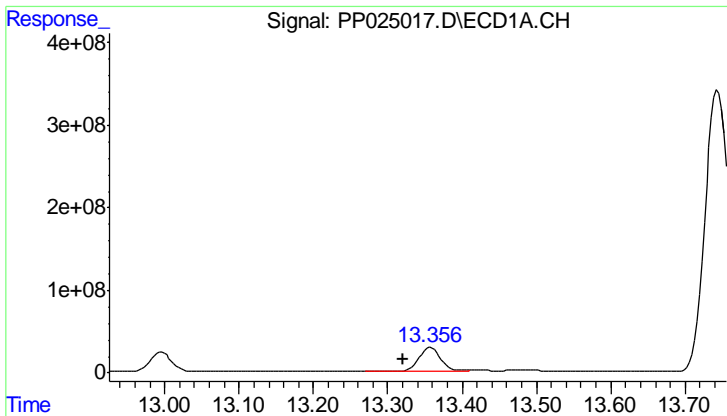
#7 MCPA
 R.T.: 12.066 min
 Delta R.T.: 0.005 min
 Response: 169188685
 Conc: 80.19 ug/ml



#8 DICHLORPROP
 R.T.: 12.996 min
 Delta R.T.: 0.037 min
 Response: 476912700
 Conc: 801.60 ng/ml



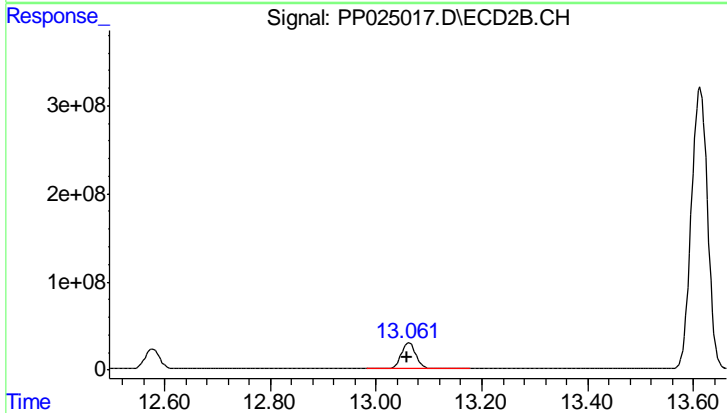
#8 DICHLORPROP
 R.T.: 12.578 min
 Delta R.T.: 0.005 min
 Response: 446254860
 Conc: 757.75 ng/ml



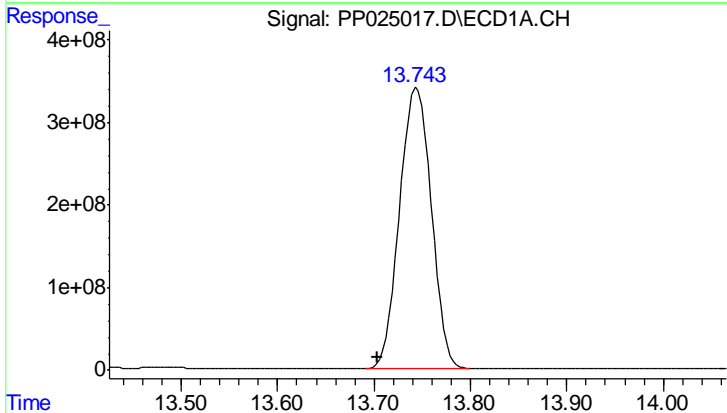
#9 2,4-D
 R.T.: 13.358 min
 Delta R.T.: 0.037 min
 Response: 569893514
 Conc: 777.98 ng/ml

Instrument :
 ECD_P
ClientSampleId :
 HSTDCCC750

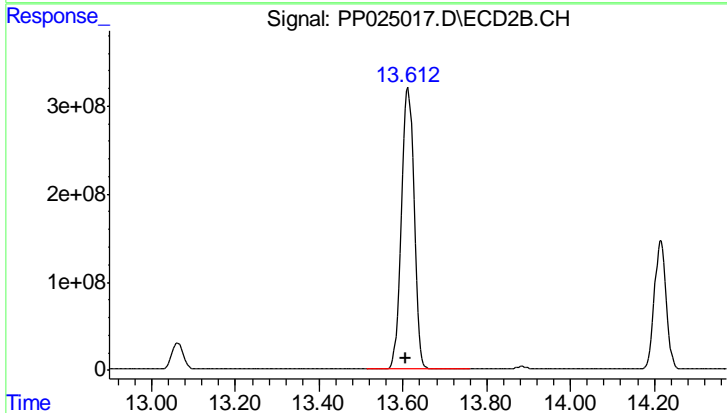
Manual Integrations
APPROVED
 ugo
 4/13/2018 10:48:45 AM



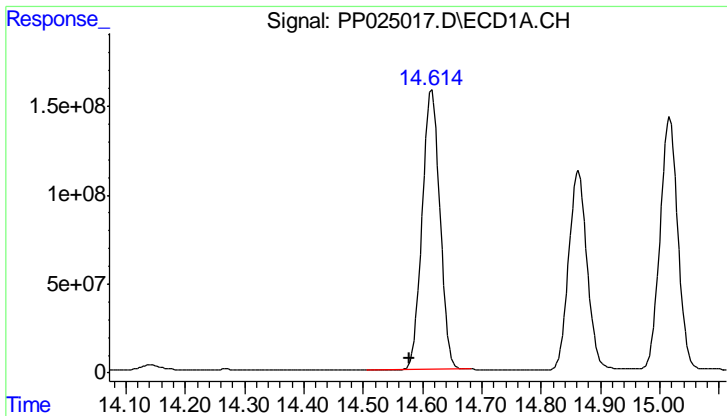
#9 2,4-D
 R.T.: 13.062 min
 Delta R.T.: 0.004 min
 Response: 576620613
 Conc: 759.57 ng/ml



#10 Pentachlorophenol
 R.T.: 13.743 min
 Delta R.T.: 0.039 min
 Response: 7726005103
 Conc: 823.10 ng/ml m



#10 Pentachlorophenol
 R.T.: 13.613 min
 Delta R.T.: 0.006 min
 Response: 6747232959
 Conc: 760.19 ng/ml



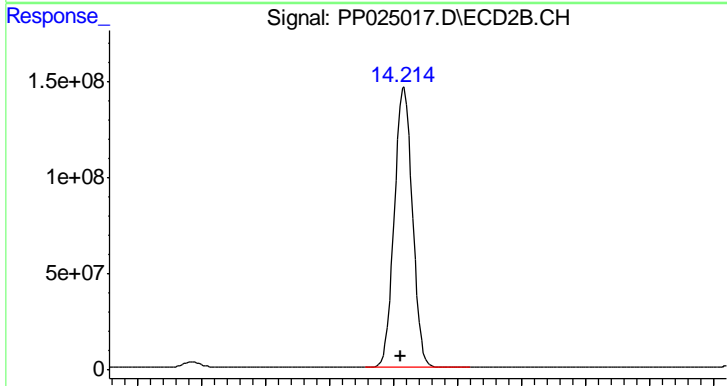
#11 2,4,5-TP (SILVEX)

R.T.: 14.616 min
 Delta R.T.: 0.038 min
 Response: 3272694377
 Conc: 775.86 ng/ml

Instrument :
 ECD_P
 ClientSampled :
 HSTDCCC750

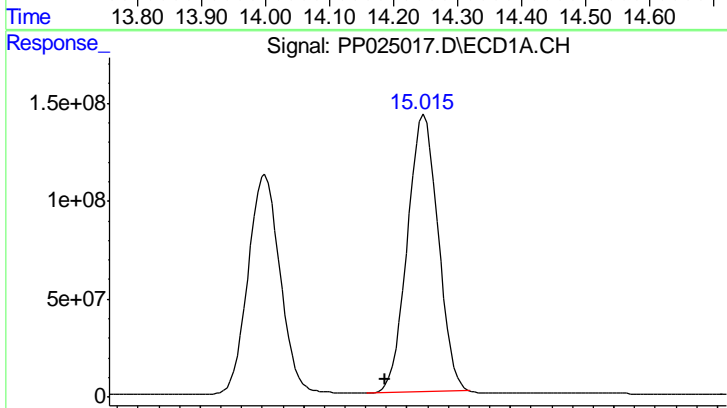
Manual Integrations
 APPROVED

ugo
 4/13/2018 10:48:45 AM



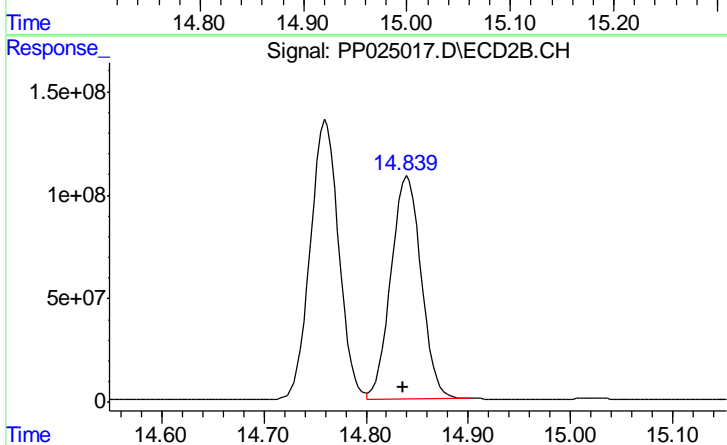
#11 2,4,5-TP (SILVEX)

R.T.: 14.216 min
 Delta R.T.: 0.005 min
 Response: 2865781788
 Conc: 771.13 ng/ml



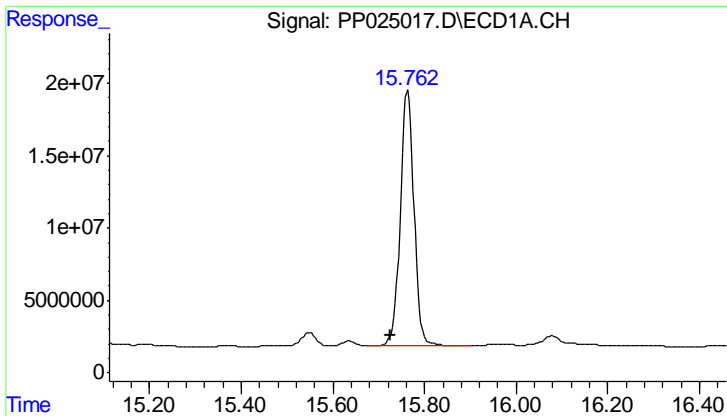
#12 2,4,5-T

R.T.: 15.017 min
 Delta R.T.: 0.038 min
 Response: 2914216742
 Conc: 799.77 ng/ml



#12 2,4,5-T

R.T.: 14.841 min
 Delta R.T.: 0.005 min
 Response: 2207392216
 Conc: 739.92 ng/ml



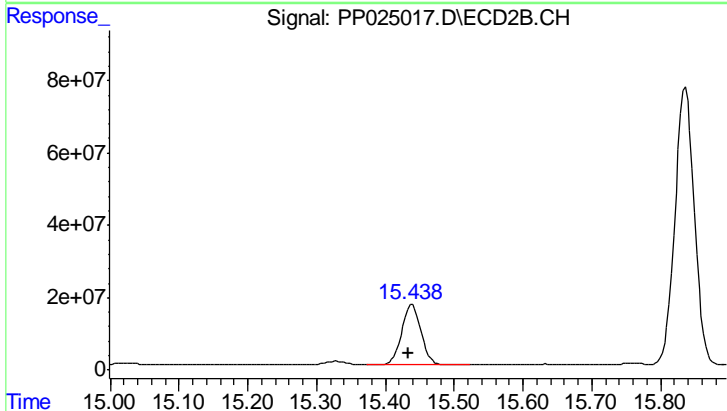
#13 2,4-DB

R.T.: 15.763 min
 Delta R.T.: 0.037 min
 Response: 367399235
 Conc: 809.62 ng/ml

Instrument :
 ECD_P
 ClientSampled :
 HSTDCCC750

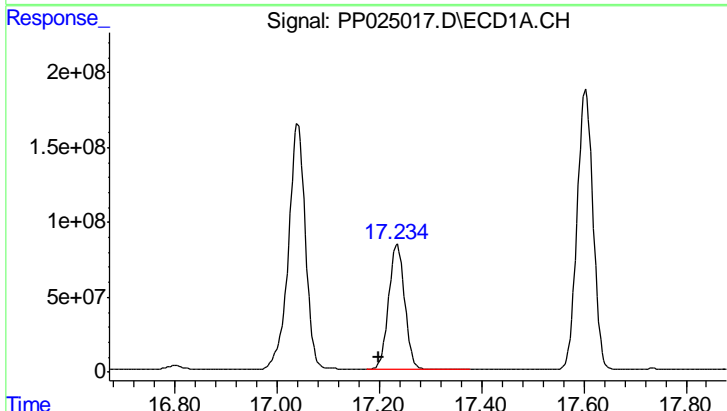
Manual Integrations
 APPROVED

ugo
 4/13/2018 10:48:45 AM



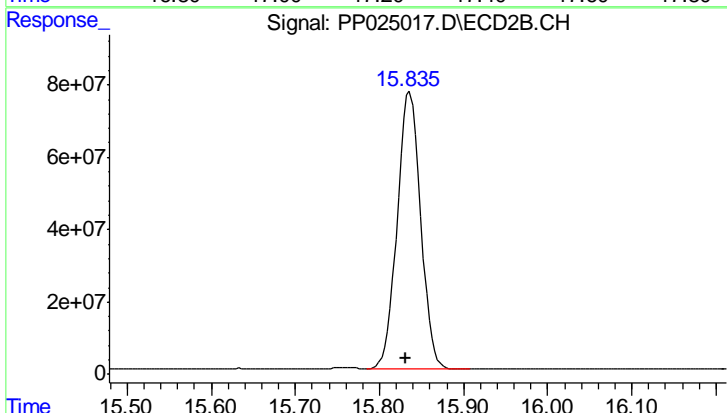
#13 2,4-DB

R.T.: 15.439 min
 Delta R.T.: 0.005 min
 Response: 323432408
 Conc: 764.03 ng/ml



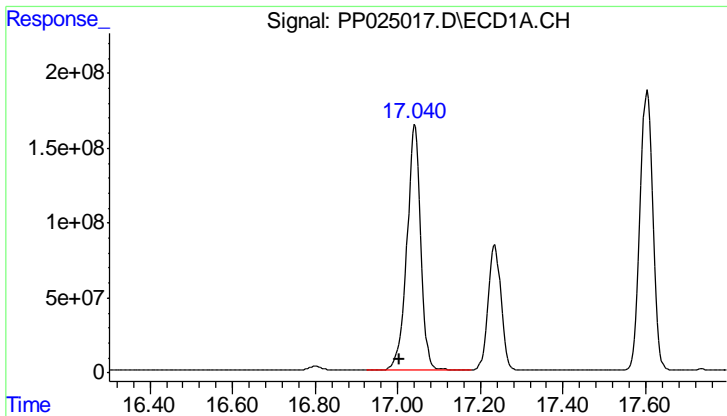
#14 DINOSEB

R.T.: 17.235 min
 Delta R.T.: 0.037 min
 Response: 1815057807
 Conc: 654.84 ng/ml



#14 DINOSEB

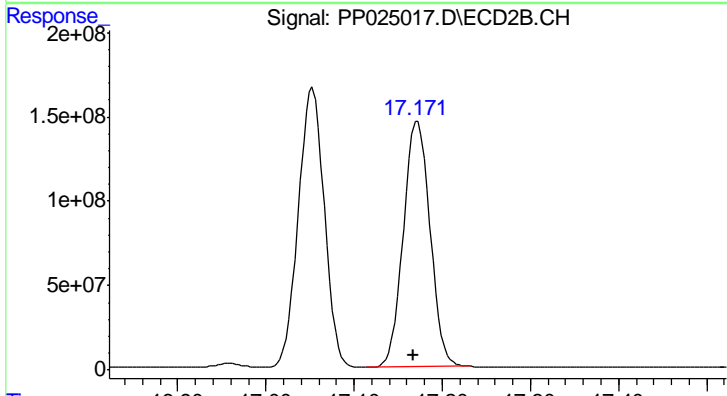
R.T.: 15.836 min
 Delta R.T.: 0.005 min
 Response: 1491214742
 Conc: 609.87 ng/ml



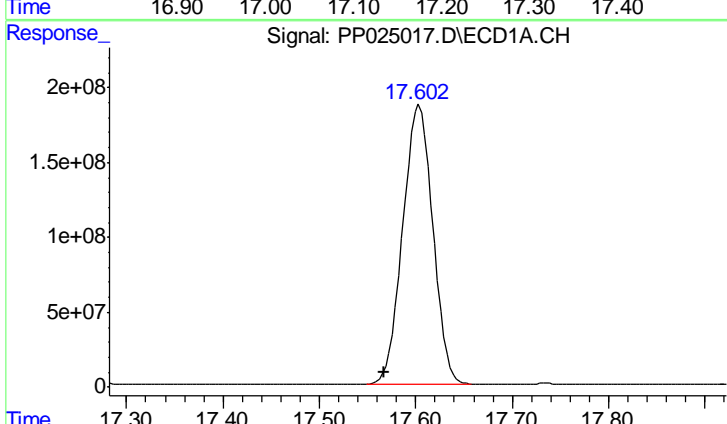
#15 Picloram
 R.T.: 17.041 min
 Delta R.T.: 0.037 min
 Response: 3847021116
 Conc: 657.31 ng/ml

Instrument :
 ECD_P
ClientSampled :
 HSTDCCC750

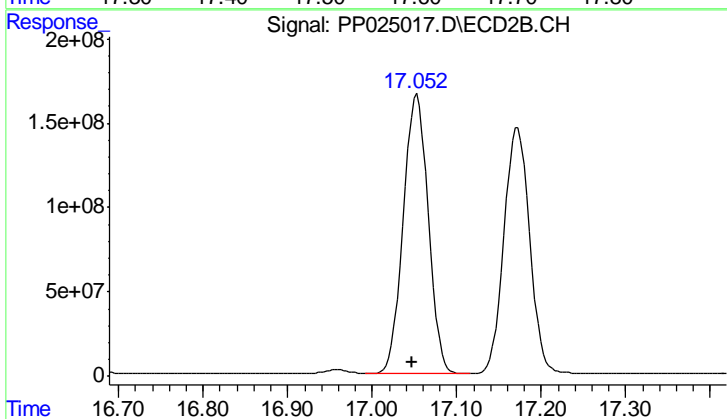
Manual Integrations
APPROVED
 ugo
 4/13/2018 10:48:45 AM



#15 Picloram
 R.T.: 17.172 min
 Delta R.T.: 0.005 min
 Response: 3058546533
 Conc: 635.55 ng/ml



#16 DCPA
 R.T.: 17.602 min
 Delta R.T.: 0.034 min
 Response: 3999371009
 Conc: 826.13 ng/ml m



#16 DCPA
 R.T.: 17.053 min
 Delta R.T.: 0.005 min
 Response: 3402232217
 Conc: 786.95 ng/ml