

Data Path : Z:\pestpcbsrv\HPCHEM1\ECD\_P\Data\PP041222\  
 Data File : PP045837.D  
 Signal(s) : Signal #1: ECD1A.ch Signal #2: ECD2B.ch  
 Acq On : 11 Apr 2022 19:23  
 Operator : YP\AJ  
 Sample : HEXANE  
 Misc :  
 ALS Vial : 1 Sample Multiplier: 1

Instrument :  
 ECD\_P  
 ClientSampleId :

Integration File signal 1: autoint1.e  
 Integration File signal 2: autoint2.e  
 Quant Time: Apr 12 06:46:54 2022  
 Quant Method : Z:\pestpcbsrv\HPCHEM1\ECD\_P\methods\PP041222.M  
 Quant Title : GC EXTRACTABLES  
 QLast Update : Tue Apr 12 05:31:12 2022  
 Response via : Initial Calibration  
 Integrator: ChemStation

Volume Inj. : 2 µl  
 Signal #1 Phase : ZB-MR2 Signal #2 Phase: ZB-MR2  
 Signal #1 Info : 30Mx0.32mmx 0.50µ Signal #2 Info : 30M x 0.32mm x 0.25µm

| Compound                    | RT#1   | RT#2   | Resp#1  | Resp#2  | ng/ml   | ng/ml     |
|-----------------------------|--------|--------|---------|---------|---------|-----------|
| System Monitoring Compounds |        |        |         |         |         |           |
| 1) SA Tetrachlo...          | 3.877  | 3.141  | 50954   | 16733   | 0.021   | 0.011 #   |
| 2) SA Decachlor...          | 9.970  | 8.476  | 180084  | 89303   | 0.110   | 0.063 #   |
| Target Compounds            |        |        |         |         |         |           |
| 3) L1 AR-1016-1             | 5.127  | 4.277  | 380061  | 28847   | 4.957   | 0.491 #   |
| 4) L1 AR-1016-2             | 5.154  | 4.300  | 346342  | 13901   | 2.995   | 0.166 #   |
| 5) L1 AR-1016-3             | 5.198  | 4.477  | 899302  | 26285   | 13.052  | 0.595 #   |
| 6) L1 AR-1016-4             | 5.329  | 4.527  | 503108  | 12985   | 8.550   | 0.364 #   |
| 7) L1 AR-1016-5             | 5.643  | 4.775f | 635302  | 3836447 | 11.521  | 80.758 #  |
| 8) L2 AR-1221-1             | 4.099  | 3.357  | 34225   | 18721   | 1.314   | 0.922 #   |
| 9) L2 AR-1221-2             | 4.201  | 3.450  | 104942  | 14980   | 5.518   | 0.986 #   |
| 10) L2 AR-1221-3            | 4.273  | 3.533  | 38596   | 4742    | 0.628   | 0.103 #   |
| 11) L3 AR-1232-1            | 4.273  | 3.533  | 38596   | 4742    | 0.680   | 0.112 #   |
| 12) L3 AR-1232-2            | 4.824  | 4.300  | 63407   | 13901   | 2.378   | 0.347 #   |
| 13) L3 AR-1232-3            | 5.154  | 4.477  | 346342  | 26285   | 6.434   | 1.223 #   |
| 14) L3 AR-1232-4            | 5.309  | 4.569  | 627159  | 8993    | 23.708  | 0.475 #   |
| 15) L3 AR-1232-5            | 5.422  | 4.775f | 418740  | 3836447 | 22.717  | 179.406 # |
| 16) L4 AR-1242-1            | 5.127  | 4.277  | 380061  | 28847   | 6.359   | 0.623 #   |
| 17) L4 AR-1242-2            | 5.154  | 4.300  | 346342  | 13901   | 3.858   | 0.214 #   |
| 18) L4 AR-1242-3            | 5.198f | 4.477  | 899302  | 26285   | 16.211  | 0.760 #   |
| 19) L4 AR-1242-4            | 5.329  | 4.569  | 503108  | 8993    | 11.086  | 0.268 #   |
| 20) L4 AR-1242-5            | 6.133  | 5.115  | 5911004 | 43560   | 127.261 | 0.992 #   |
| 21) L5 AR-1248-1            | 5.127  | 4.277  | 380061  | 28847   | 8.810   | 0.841 #   |
| 22) L5 AR-1248-2            | 5.422  | 4.527  | 418740  | 12985   | 7.004   | 0.277 #   |
| 23) L5 AR-1248-3            | 5.643  | 4.569  | 635302  | 8993    | 9.082   | 0.184 #   |
| 24) L5 AR-1248-4            | 6.091  | 4.775f | 3342978 | 3836447 | 42.282  | 66.030 #  |
| 25) L5 AR-1248-5            | 6.133f | 5.175  | 5911004 | 74542   | 75.498  | 1.270 #   |
| 26) L6 AR-1254-1            | 0.000  | 5.115  | 0       | 43560   | N.D.    | 0.494 #   |
| 27) L6 AR-1254-2            | 6.284  | 5.289  | 1989634 | 106969  | 16.157  | 1.417 #   |
| 28) L6 AR-1254-3            | 6.694  | 5.714  | 2707264 | 710086  | 22.522  | 6.038 #   |
| 29) L6 AR-1254-4            | 7.000  | 5.961  | 3652089 | 641358  | 41.409  | 8.499 #   |
| 30) L6 AR-1254-5            | 7.451  | 6.417  | 1557376 | 111373  | 16.625  | 1.087 #   |
| 31) L7 AR-1260-1            | 6.864  | 5.857  | 142071  | 284917  | 1.609   | 3.600 #   |
| 32) L7 AR-1260-2            | 7.142  | 6.068  | 273432  | 121656  | 2.669   | 1.300 #   |
| 33) L7 AR-1260-3            | 7.541  | 6.218  | 223425  | 1343803 | 2.712   | 15.170 #  |
| 34) L7 AR-1260-4            | 7.786  | 6.730  | 156027  | 52459   | 1.841   | 0.731 #   |
| 35) L7 AR-1260-5            | 8.134  | 7.001  | 64249   | 422975  | 0.391   | 2.490 #   |
| 36) L8 AR-1262-1            | 7.541  | 6.456  | 223425  | 97557   | 1.942   | 0.922 #   |
| 37) L8 AR-1262-2            | 8.126  | 6.730  | 48386   | 52459   | 0.270   | 0.557 #   |
| 38) L8 AR-1262-3            | 8.454  | 7.304  | 487606  | 551089  | 3.742   | 7.198 #   |
| 39) L8 AR-1262-4            | 8.571f | 7.378  | 1053535 | 58903   | 16.727  | 0.414 #   |
| 40) L8 AR-1262-5            | 9.230  | 7.929  | 335939  | 417651  | 4.920   | 5.962     |
| 41) L9 AR-1268-1            | 8.454  | 7.304  | 487606  | 551089  | 1.793   | 2.484 #   |

Data Path : Z:\pestpcbsrv\HPCHEM1\ECD\_P\Data\PP041222\  
 Data File : PP045837.D  
 Signal(s) : Signal #1: ECD1A.ch Signal #2: ECD2B.ch  
 Acq On : 11 Apr 2022 19:23  
 Operator : YP\AJ  
 Sample : HEXANE  
 Misc :  
 ALS Vial : 1 Sample Multiplier: 1

Instrument :  
 ECD\_P  
 ClientSampleId :

Integration File signal 1: autoint1.e  
 Integration File signal 2: autoint2.e  
 Quant Time: Apr 12 06:46:54 2022  
 Quant Method : Z:\pestpcbsrv\HPCHEM1\ECD\_P\methods\PP041222.M  
 Quant Title : GC EXTRACTABLES  
 QLast Update : Tue Apr 12 05:31:12 2022  
 Response via : Initial Calibration  
 Integrator: ChemStation

Volume Inj. : 2 µl  
 Signal #1 Phase : ZB-MR1 Signal #2 Phase: ZB-MR2  
 Signal #1 Info : 30Mx0.32mmx 0.50µ Signal #2 Info : 30M x 0.32mm x 0.25µm

|     | Compound     | RT#1  | RT#2  | Resp#1  | Resp#2 | ng/ml | ng/ml   |
|-----|--------------|-------|-------|---------|--------|-------|---------|
| 42) | L9 AR-1268-2 | 8.571 | 7.378 | 1053535 | 58903  | 4.164 | 0.291 # |
| 43) | L9 AR-1268-3 | 8.789 | 7.593 | 94138   | 54500  | 0.414 | 0.320   |
| 44) | L9 AR-1268-4 | 9.230 | 7.929 | 335939  | 417651 | 3.722 | 5.292 # |
| 45) | L9 AR-1268-5 | 9.642 | 8.219 | 95834   | 35358  | 0.141 | 0.064 # |

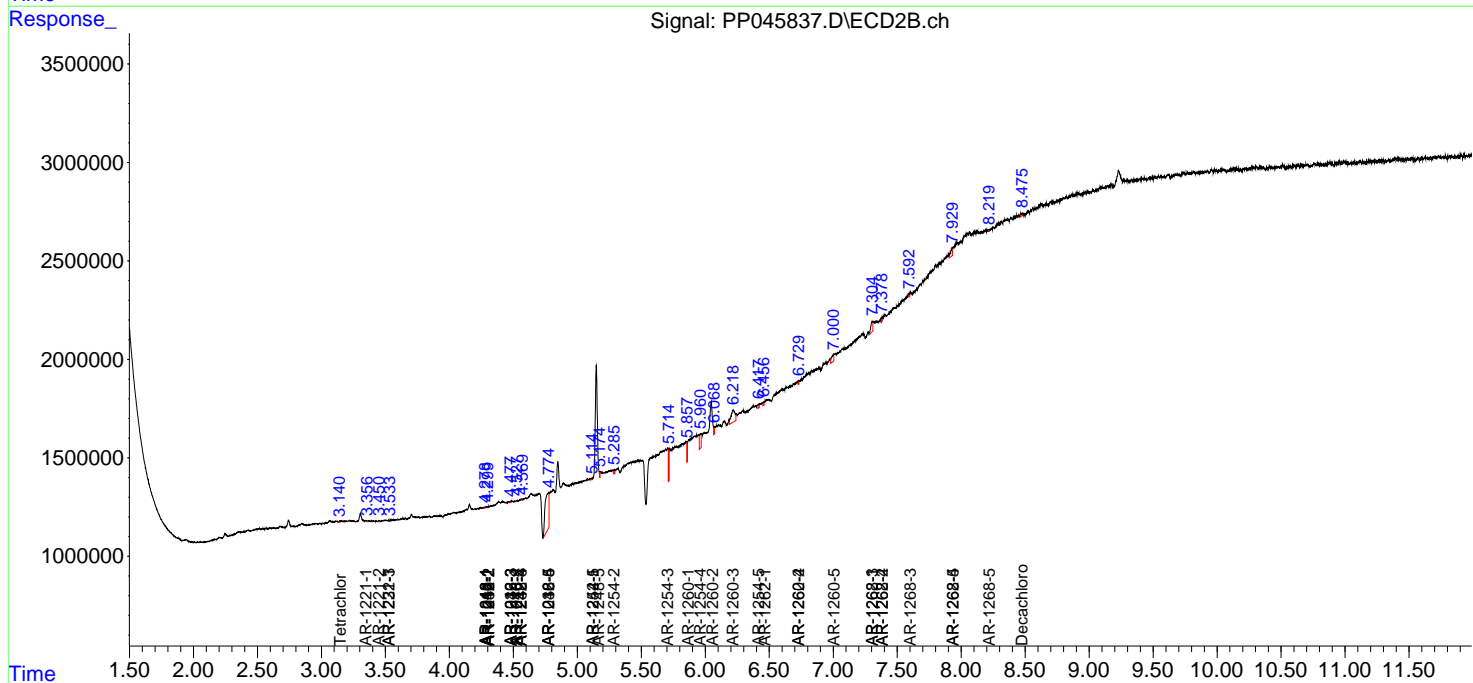
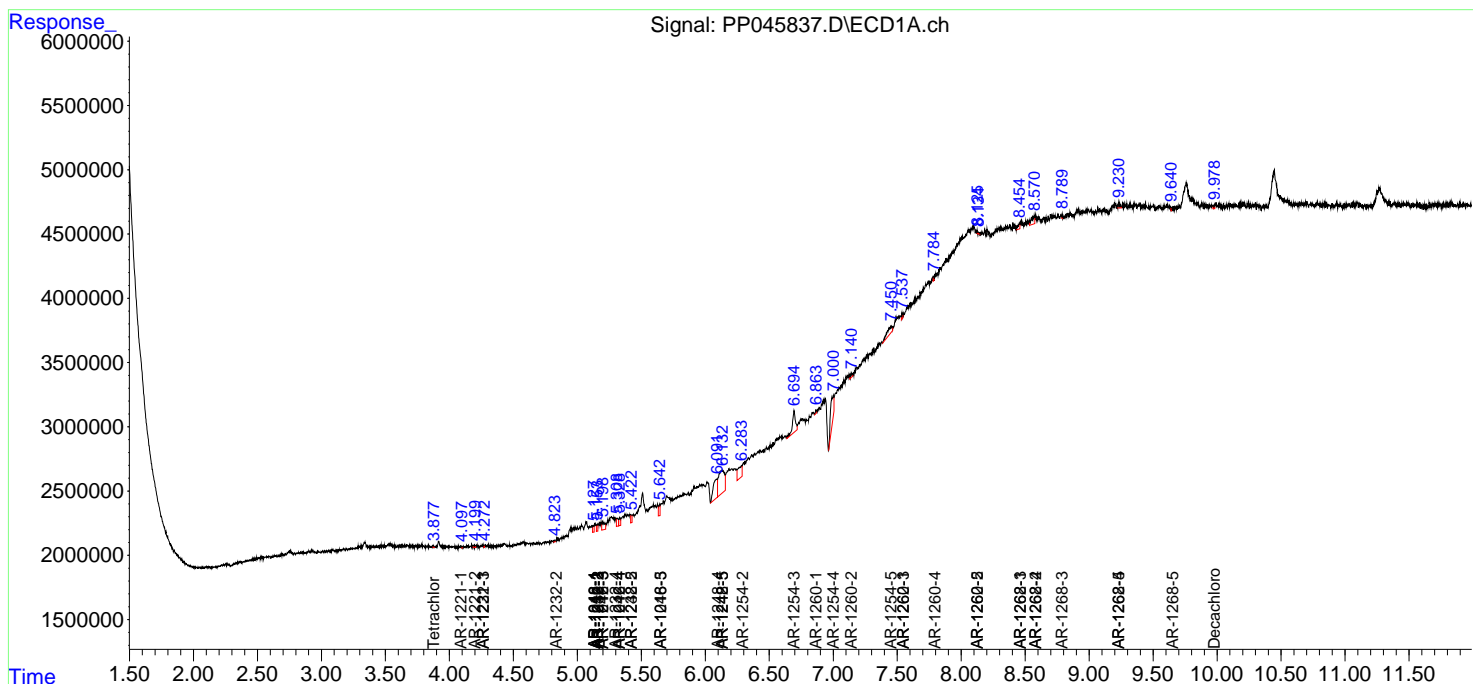
(f)=RT Delta > 1/2 Window (#)=Amounts differ by > 25% (m)=manual int.

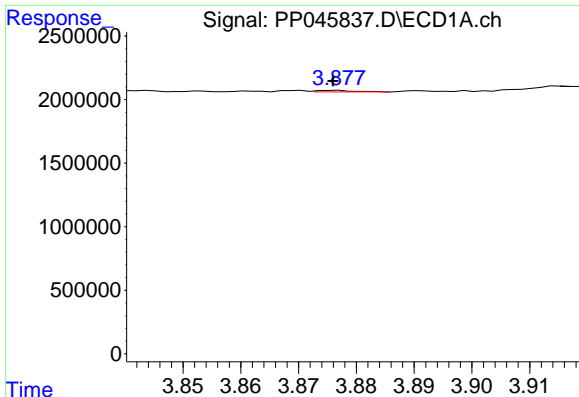
Data Path : Z:\pestpcbsrv\HPCHEM1\ECD\_P\Data\PP041222\  
 Data File : PP045837.D  
 Signal(s) : Signal #1: ECD1A.ch Signal #2: ECD2B.ch  
 Acq On : 11 Apr 2022 19:23  
 Operator : YP\AJ  
 Sample : HEXANE  
 Misc :  
 ALS Vial : 1 Sample Multiplier: 1

Instrument :  
 ECD\_P  
 ClientSampleId :

Integration File signal 1: autoint1.e  
 Integration File signal 2: autoint2.e  
 Quant Time: Apr 12 06:46:54 2022  
 Quant Method : Z:\pestpcbsrv\HPCHEM1\ECD\_P\methods\PP041222.M  
 Quant Title : GC EXTRACTABLES  
 QLast Update : Tue Apr 12 05:31:12 2022  
 Response via : Initial Calibration  
 Integrator: ChemStation

Volume Inj. : 2 µl  
 Signal #1 Phase : ZB-MR1 Signal #2 Phase: ZB-MR2  
 Signal #1 Info : 30Mx0.32mmx 0.50µ Signal #2 Info : 30M x 0.32mm x 0.25µm

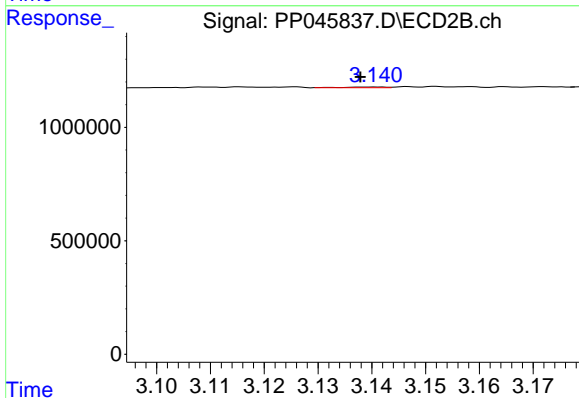




#1 Tetrachloro-m-xylene

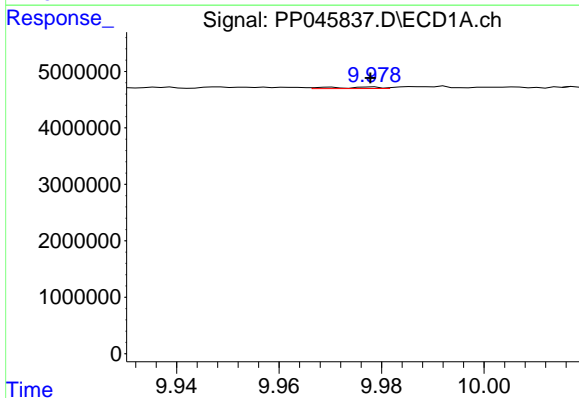
R.T.: 3.877 min  
 Delta R.T.: 0.000 min  
 Response: 50954  
 Conc: 0.02 ng/ml

Instrument :  
 ECD\_P  
 ClientSampleId :



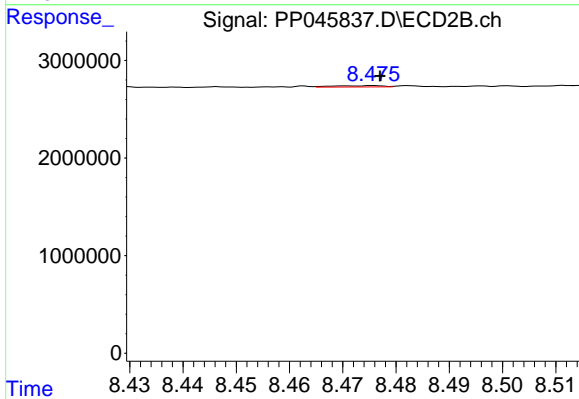
#1 Tetrachloro-m-xylene

R.T.: 3.141 min  
 Delta R.T.: 0.003 min  
 Response: 16733  
 Conc: 0.01 ng/ml



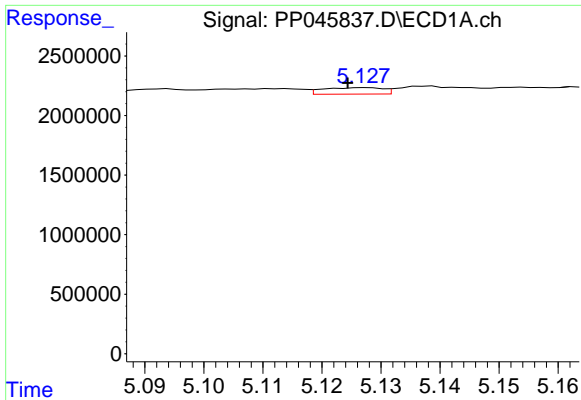
#2 Decachlorobiphenyl

R.T.: 9.970 min  
 Delta R.T.: -0.008 min  
 Response: 180084  
 Conc: 0.11 ng/ml



#2 Decachlorobiphenyl

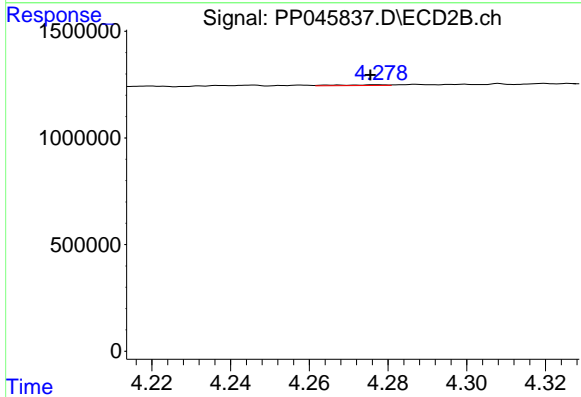
R.T.: 8.476 min  
 Delta R.T.: -0.001 min  
 Response: 89303  
 Conc: 0.06 ng/ml



#3 AR-1016-1

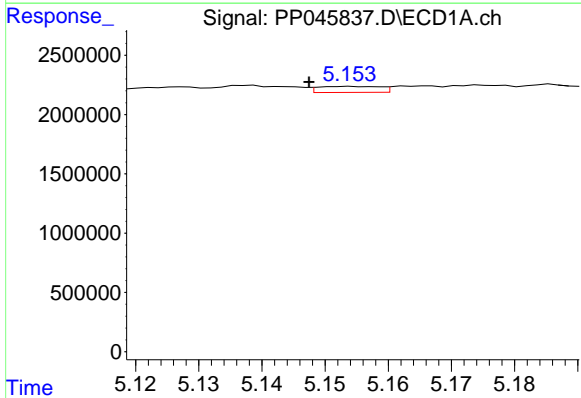
R.T.: 5.127 min  
 Delta R.T.: 0.003 min  
 Response: 380061  
 Conc: 4.96 ng/ml

Instrument :  
 ECD\_P  
 ClientSampleId :



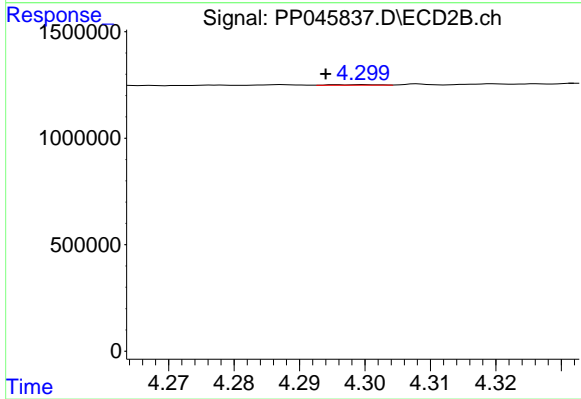
#3 AR-1016-1

R.T.: 4.277 min  
 Delta R.T.: 0.002 min  
 Response: 28847  
 Conc: 0.49 ng/ml



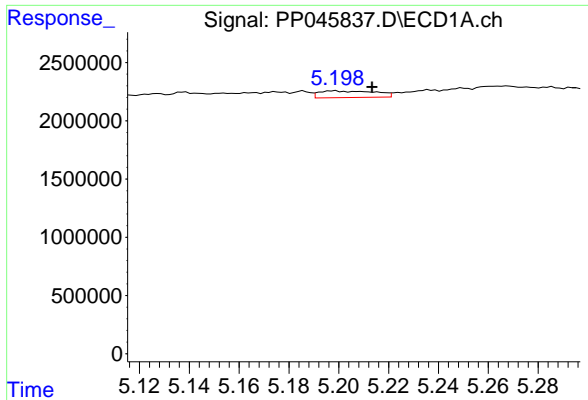
#4 AR-1016-2

R.T.: 5.154 min  
 Delta R.T.: 0.006 min  
 Response: 346342  
 Conc: 3.00 ng/ml



#4 AR-1016-2

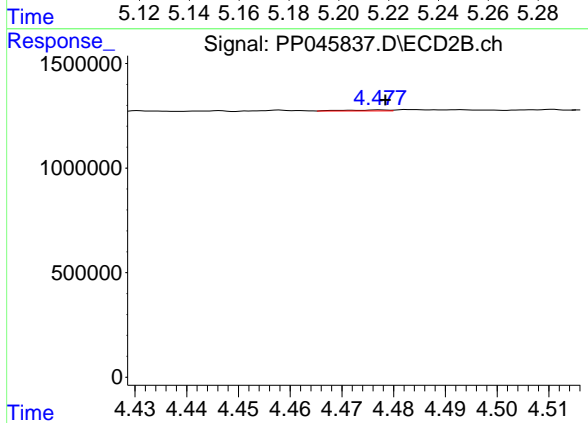
R.T.: 4.300 min  
 Delta R.T.: 0.006 min  
 Response: 13901  
 Conc: 0.17 ng/ml



#5 AR-1016-3

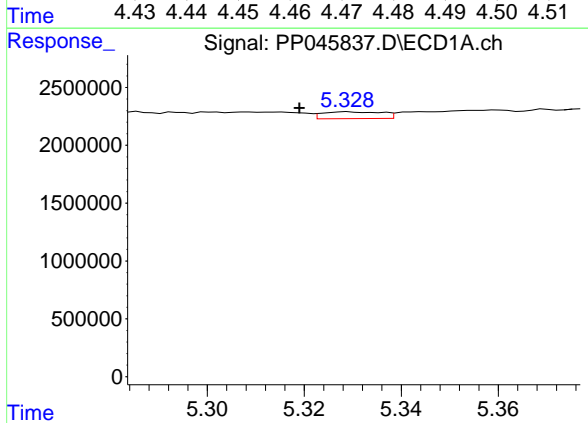
R.T.: 5.198 min  
 Delta R.T.: -0.015 min  
 Response: 899302  
 Conc: 13.05 ng/ml

Instrument :  
 ECD\_P  
 ClientSampleId :



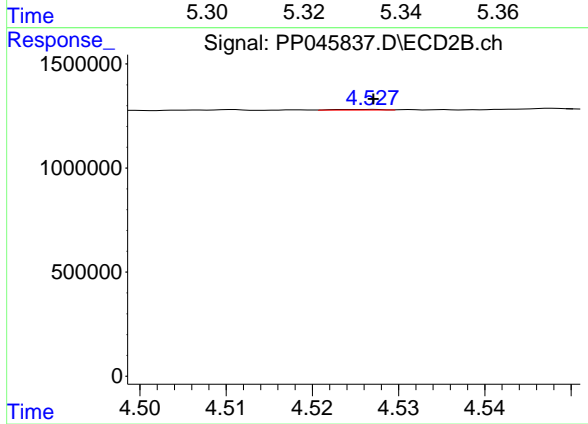
#5 AR-1016-3

R.T.: 4.477 min  
 Delta R.T.: -0.001 min  
 Response: 26285  
 Conc: 0.60 ng/ml



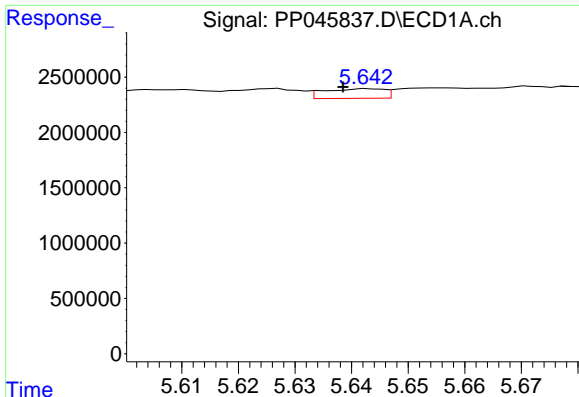
#6 AR-1016-4

R.T.: 5.329 min  
 Delta R.T.: 0.010 min  
 Response: 503108  
 Conc: 8.55 ng/ml



#6 AR-1016-4

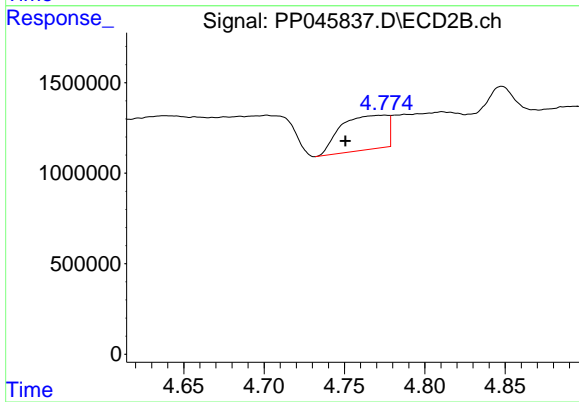
R.T.: 4.527 min  
 Delta R.T.: 0.000 min  
 Response: 12985  
 Conc: 0.36 ng/ml



#7 AR-1016-5

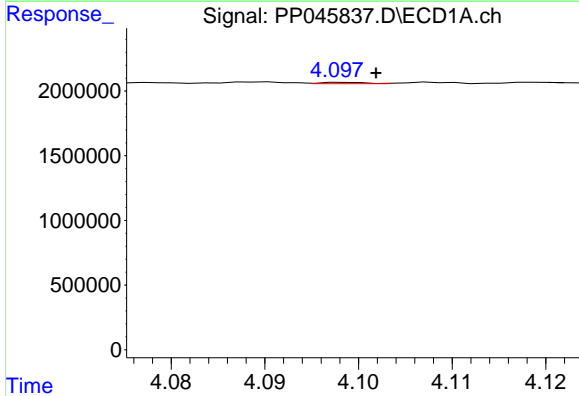
R.T.: 5.643 min  
 Delta R.T.: 0.005 min  
 Response: 635302  
 Conc: 11.52 ng/ml

Instrument :  
 ECD\_P  
 ClientSampleId :



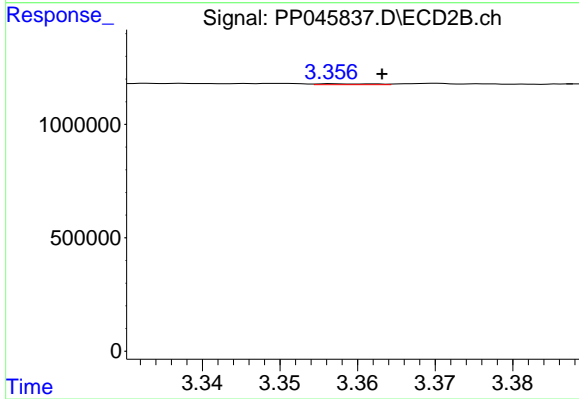
#7 AR-1016-5

R.T.: 4.775 min  
 Delta R.T.: 0.025 min  
 Response: 3836447  
 Conc: 80.76 ng/ml



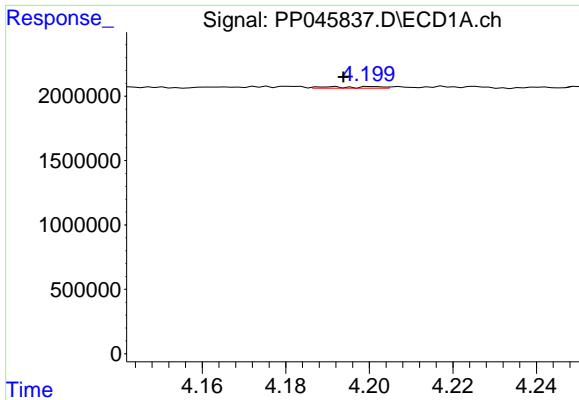
#8 AR-1221-1

R.T.: 4.099 min  
 Delta R.T.: -0.003 min  
 Response: 34225  
 Conc: 1.31 ng/ml



#8 AR-1221-1

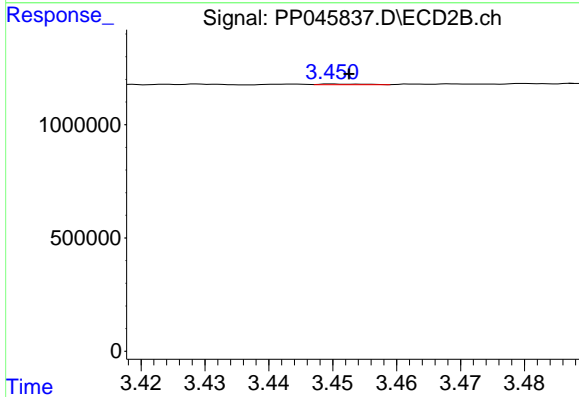
R.T.: 3.357 min  
 Delta R.T.: -0.006 min  
 Response: 18721  
 Conc: 0.92 ng/ml



#9 AR-1221-2

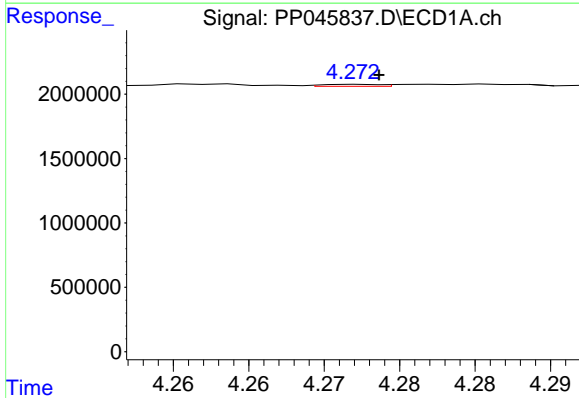
R.T.: 4.201 min  
 Delta R.T.: 0.007 min  
 Response: 104942  
 Conc: 5.52 ng/ml

Instrument :  
 ECD\_P  
 ClientSampleId :



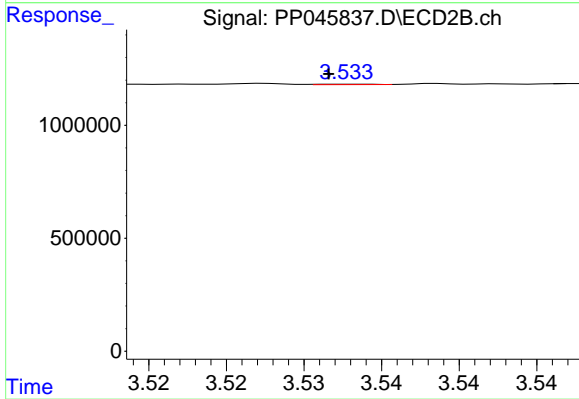
#9 AR-1221-2

R.T.: 3.450 min  
 Delta R.T.: -0.003 min  
 Response: 14980  
 Conc: 0.99 ng/ml



#10 AR-1221-3

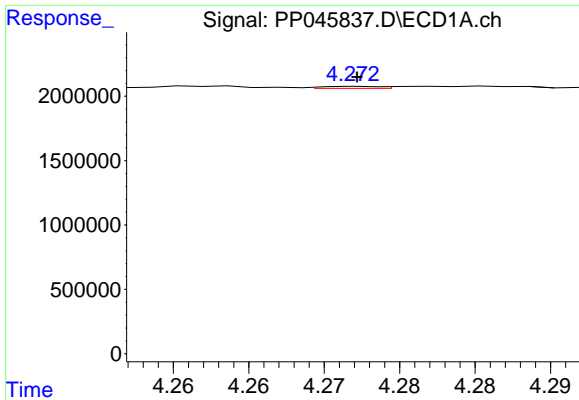
R.T.: 4.273 min  
 Delta R.T.: 0.000 min  
 Response: 38596  
 Conc: 0.63 ng/ml



#10 AR-1221-3

R.T.: 3.533 min  
 Delta R.T.: 0.001 min  
 Response: 4742  
 Conc: 0.10 ng/ml

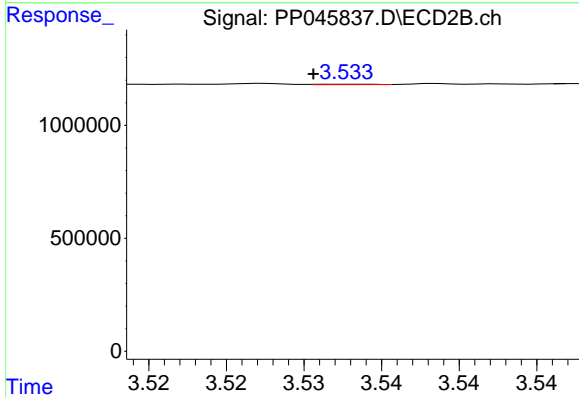




#11 AR-1232-1

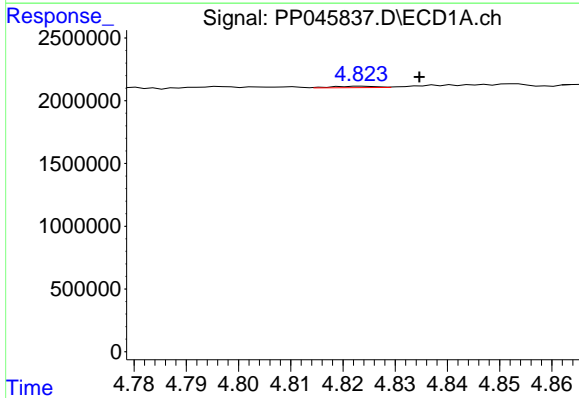
R.T.: 4.273 min  
 Delta R.T.: 0.000 min  
 Response: 38596  
 Conc: 0.68 ng/ml

Instrument :  
 ECD\_P  
 ClientSampleId :



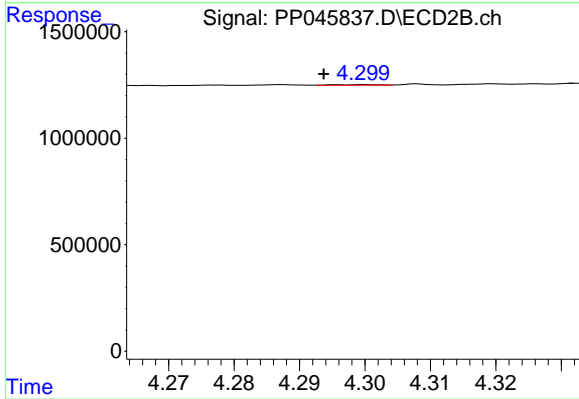
#11 AR-1232-1

R.T.: 3.533 min  
 Delta R.T.: 0.002 min  
 Response: 4742  
 Conc: 0.11 ng/ml



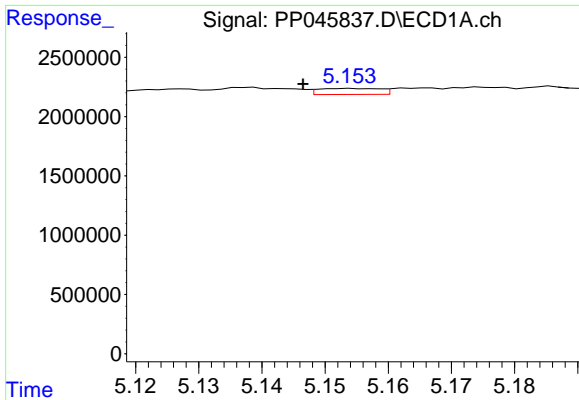
#12 AR-1232-2

R.T.: 4.824 min  
 Delta R.T.: -0.011 min  
 Response: 63407  
 Conc: 2.38 ng/ml



#12 AR-1232-2

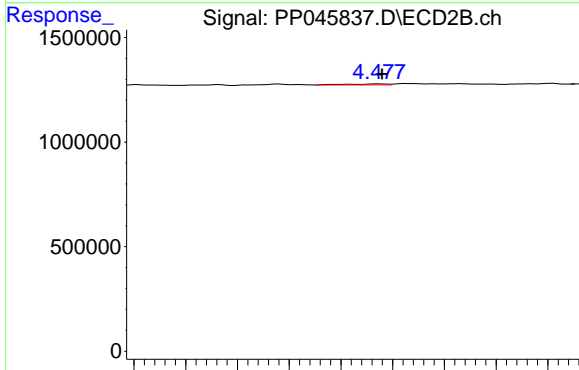
R.T.: 4.300 min  
 Delta R.T.: 0.006 min  
 Response: 13901  
 Conc: 0.35 ng/ml



#13 AR-1232-3

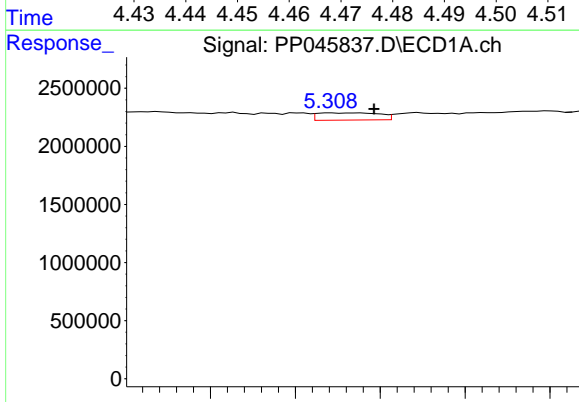
R.T.: 5.154 min  
 Delta R.T.: 0.007 min  
 Response: 346342  
 Conc: 6.43 ng/ml

Instrument :  
 ECD\_P  
 ClientSampleId :



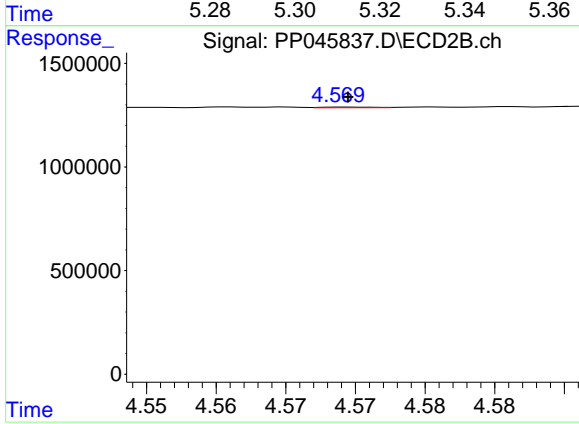
#13 AR-1232-3

R.T.: 4.477 min  
 Delta R.T.: 0.000 min  
 Response: 26285  
 Conc: 1.22 ng/ml



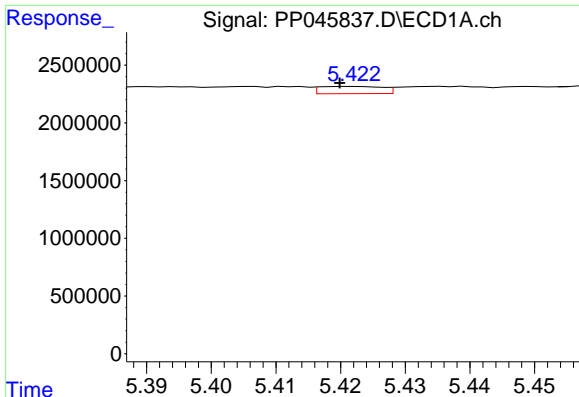
#14 AR-1232-4

R.T.: 5.309 min  
 Delta R.T.: -0.010 min  
 Response: 627159  
 Conc: 23.71 ng/ml



#14 AR-1232-4

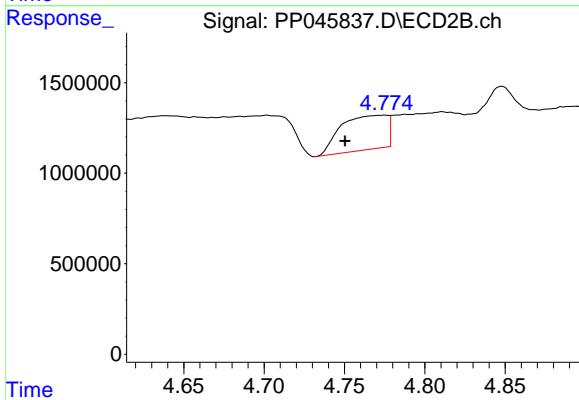
R.T.: 4.569 min  
 Delta R.T.: 0.000 min  
 Response: 8993  
 Conc: 0.47 ng/ml



#15 AR-1232-5

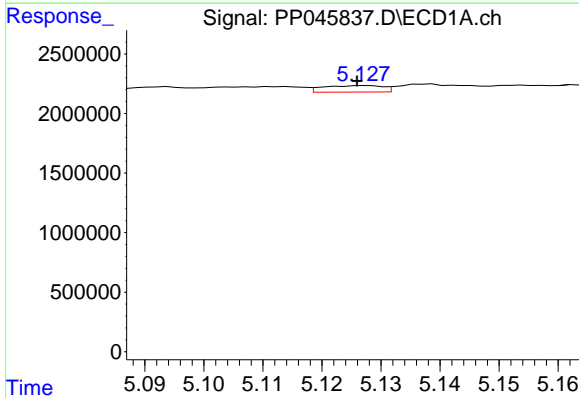
R.T.: 5.422 min  
 Delta R.T.: 0.002 min  
 Response: 418740  
 Conc: 22.72 ng/ml

Instrument :  
 ECD\_P  
 ClientSampleId :



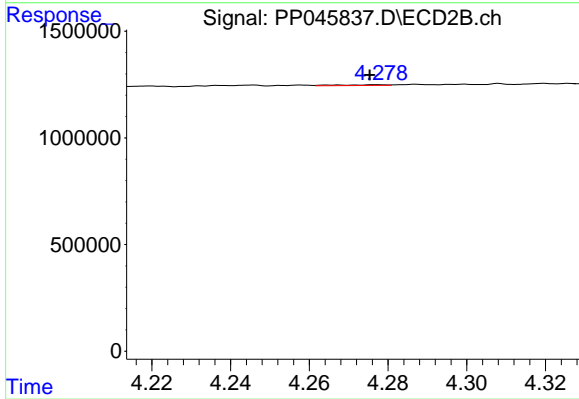
#15 AR-1232-5

R.T.: 4.775 min  
 Delta R.T.: 0.025 min  
 Response: 3836447  
 Conc: 179.41 ng/ml



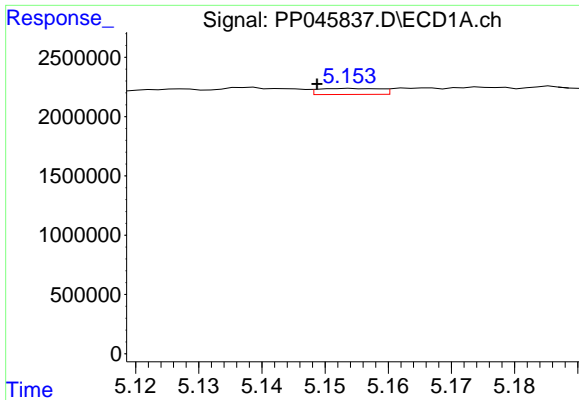
#16 AR-1242-1

R.T.: 5.127 min  
 Delta R.T.: 0.001 min  
 Response: 380061  
 Conc: 6.36 ng/ml



#16 AR-1242-1

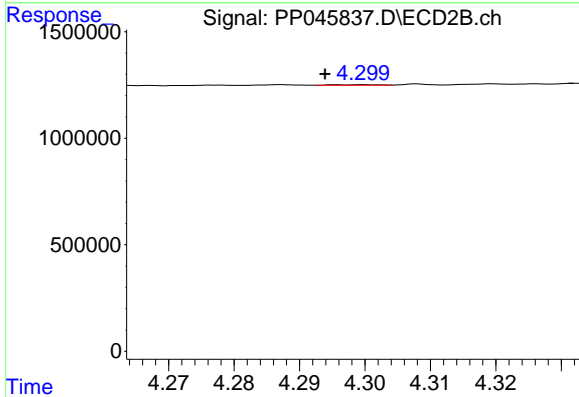
R.T.: 4.277 min  
 Delta R.T.: 0.002 min  
 Response: 28847  
 Conc: 0.62 ng/ml



#17 AR-1242-2

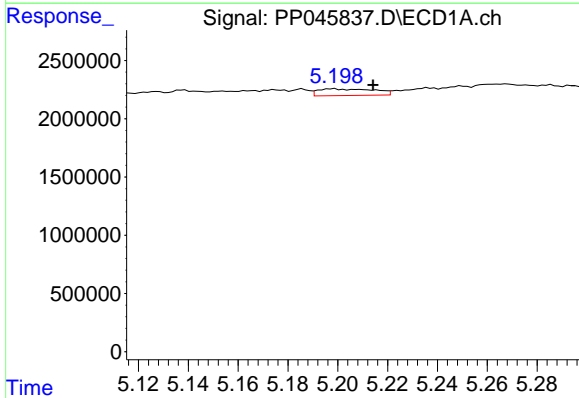
R.T.: 5.154 min  
 Delta R.T.: 0.005 min  
 Response: 346342  
 Conc: 3.86 ng/ml

Instrument :  
 ECD\_P  
 ClientSampleId :



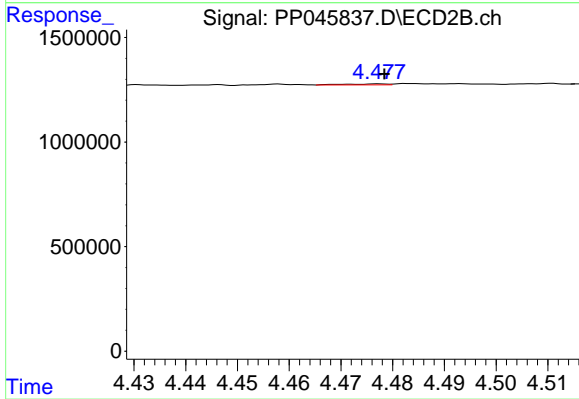
#17 AR-1242-2

R.T.: 4.300 min  
 Delta R.T.: 0.006 min  
 Response: 13901  
 Conc: 0.21 ng/ml



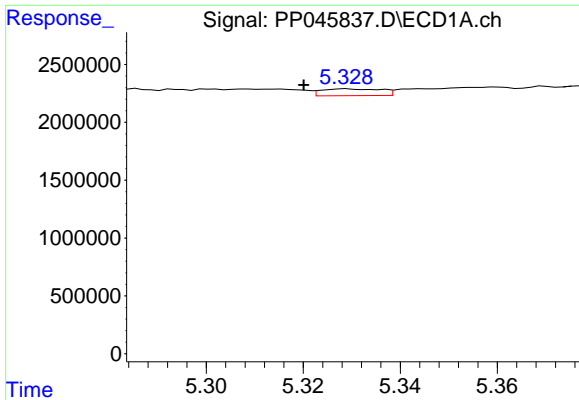
#18 AR-1242-3

R.T.: 5.198 min  
 Delta R.T.: -0.016 min  
 Response: 899302  
 Conc: 16.21 ng/ml



#18 AR-1242-3

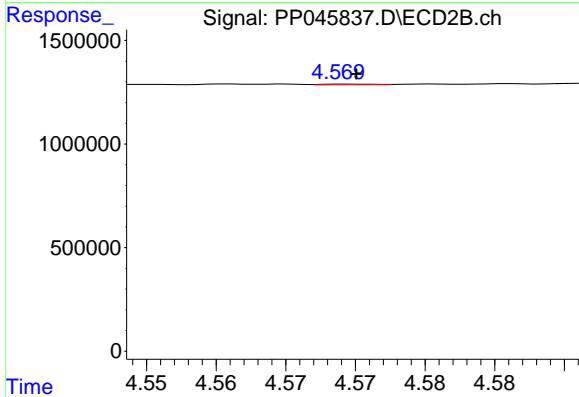
R.T.: 4.477 min  
 Delta R.T.: -0.001 min  
 Response: 26285  
 Conc: 0.76 ng/ml



#19 AR-1242-4

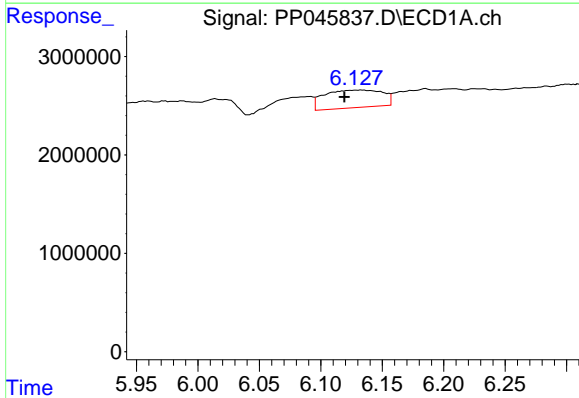
R.T.: 5.329 min  
 Delta R.T.: 0.009 min  
 Response: 503108  
 Conc: 11.09 ng/ml

Instrument :  
 ECD\_P  
 ClientSampleId :



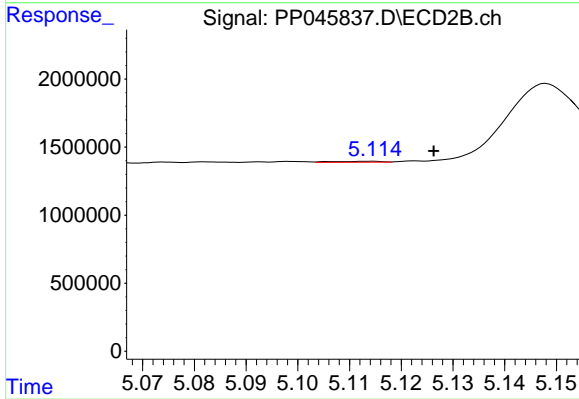
#19 AR-1242-4

R.T.: 4.569 min  
 Delta R.T.: 0.000 min  
 Response: 8993  
 Conc: 0.27 ng/ml



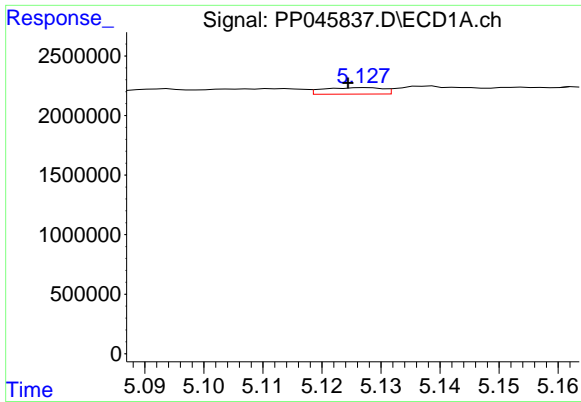
#20 AR-1242-5

R.T.: 6.133 min  
 Delta R.T.: 0.014 min  
 Response: 5911004  
 Conc: 127.26 ng/ml



#20 AR-1242-5

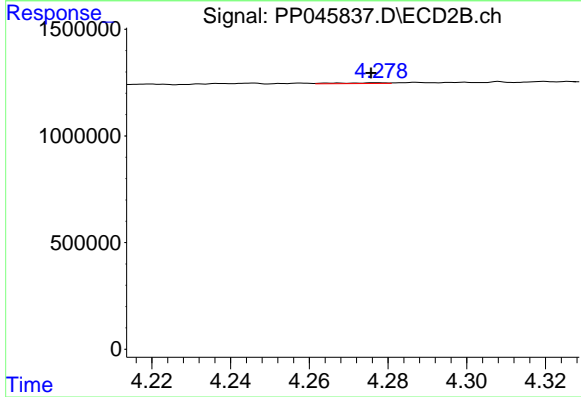
R.T.: 5.115 min  
 Delta R.T.: -0.012 min  
 Response: 43560  
 Conc: 0.99 ng/ml



#21 AR-1248-1

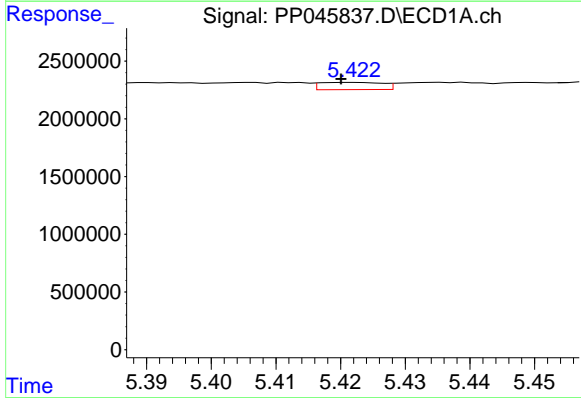
R.T.: 5.127 min  
 Delta R.T.: 0.003 min  
 Response: 380061  
 Conc: 8.81 ng/ml

Instrument :  
 ECD\_P  
 ClientSampleId :



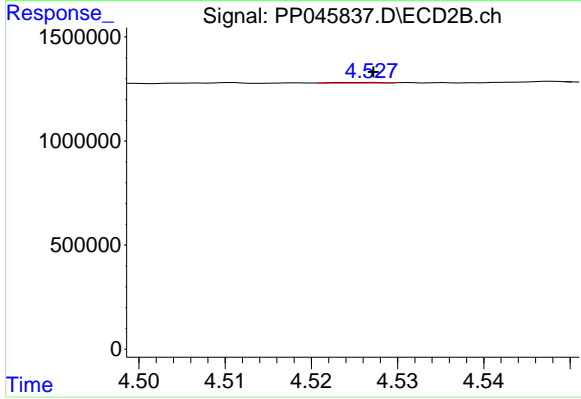
#21 AR-1248-1

R.T.: 4.277 min  
 Delta R.T.: 0.001 min  
 Response: 28847  
 Conc: 0.84 ng/ml



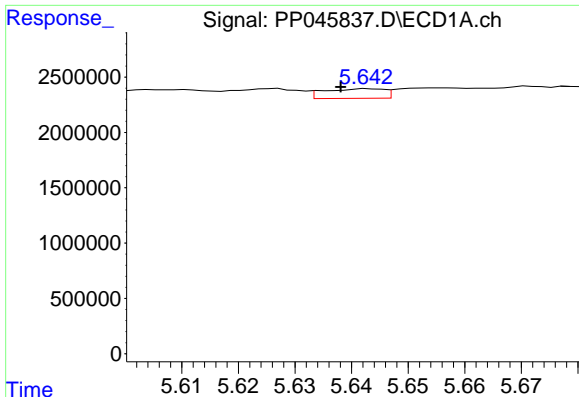
#22 AR-1248-2

R.T.: 5.422 min  
 Delta R.T.: 0.002 min  
 Response: 418740  
 Conc: 7.00 ng/ml



#22 AR-1248-2

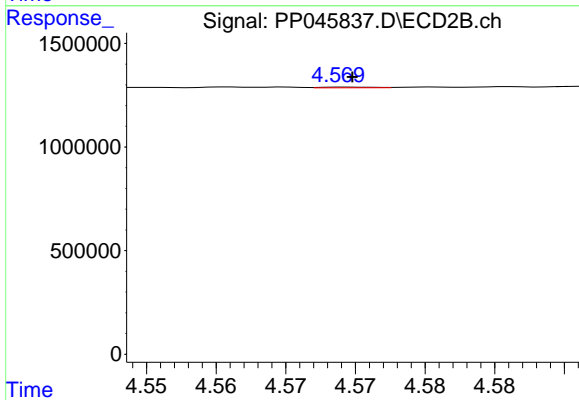
R.T.: 4.527 min  
 Delta R.T.: 0.000 min  
 Response: 12985  
 Conc: 0.28 ng/ml



#23 AR-1248-3

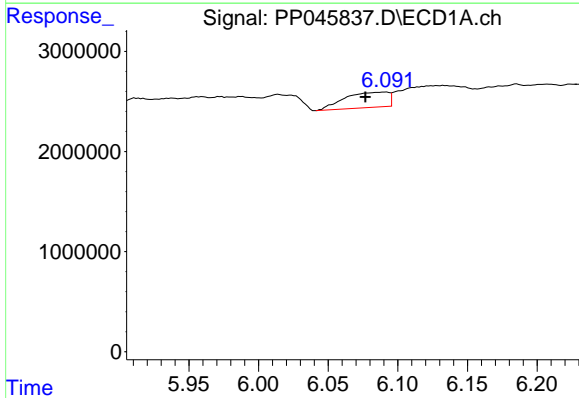
R.T.: 5.643 min  
 Delta R.T.: 0.005 min  
 Response: 635302  
 Conc: 9.08 ng/ml

Instrument :  
 ECD\_P  
 ClientSampleId :



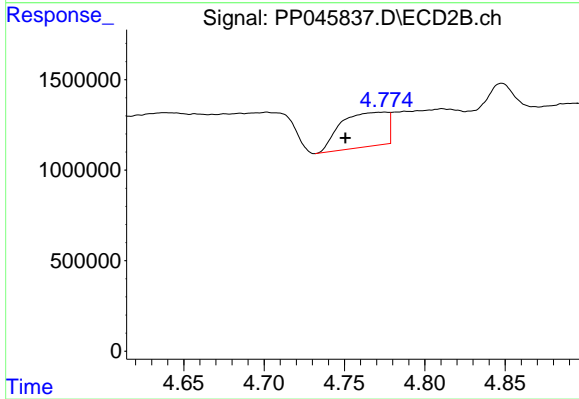
#23 AR-1248-3

R.T.: 4.569 min  
 Delta R.T.: 0.000 min  
 Response: 8993  
 Conc: 0.18 ng/ml



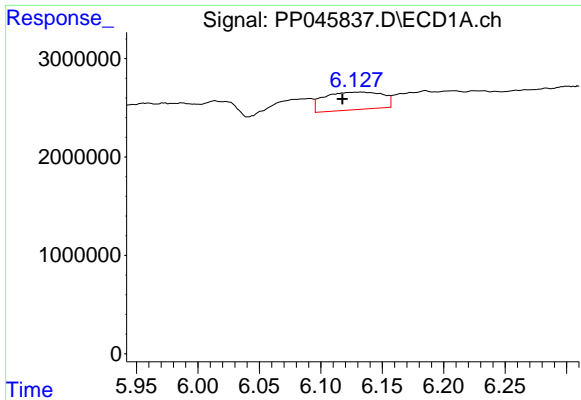
#24 AR-1248-4

R.T.: 6.091 min  
 Delta R.T.: 0.014 min  
 Response: 3342978  
 Conc: 42.28 ng/ml



#24 AR-1248-4

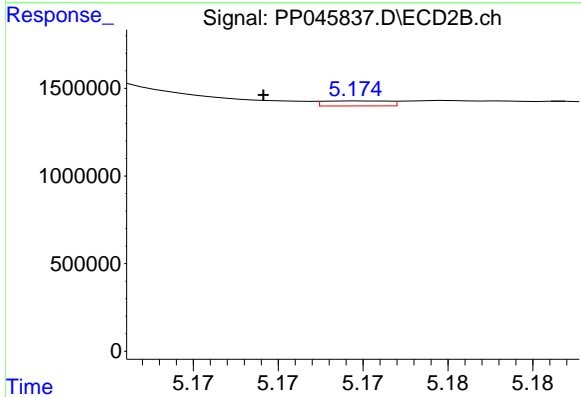
R.T.: 4.775 min  
 Delta R.T.: 0.025 min  
 Response: 3836447  
 Conc: 66.03 ng/ml



#25 AR-1248-5

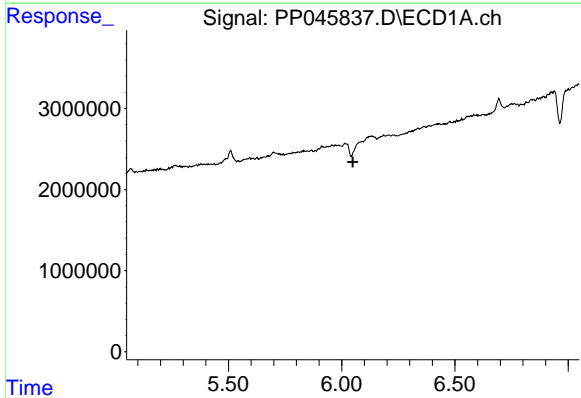
R.T.: 6.133 min  
 Delta R.T.: 0.016 min  
 Response: 5911004  
 Conc: 75.50 ng/ml

Instrument :  
 ECD\_P  
 ClientSampleId :



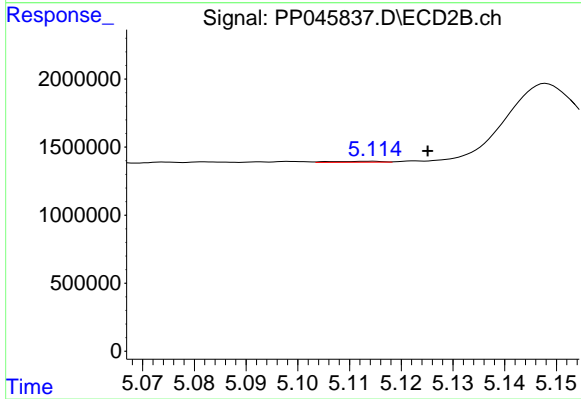
#25 AR-1248-5

R.T.: 5.175 min  
 Delta R.T.: 0.006 min  
 Response: 74542  
 Conc: 1.27 ng/ml



#26 AR-1254-1

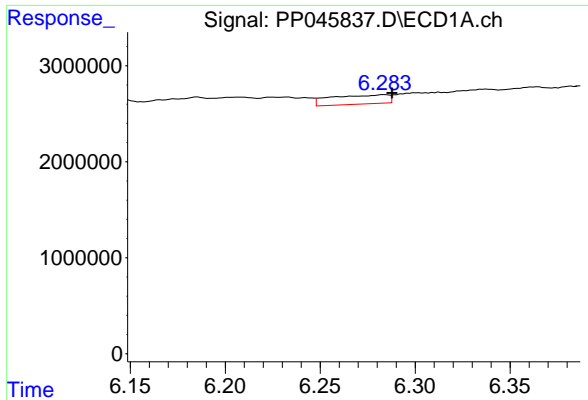
R.T.: 0.000 min  
 Exp R.T. : 6.050 min  
 Response: 0  
 Conc: N.D.



#26 AR-1254-1

R.T.: 5.115 min  
 Delta R.T.: -0.010 min  
 Response: 43560  
 Conc: 0.49 ng/ml

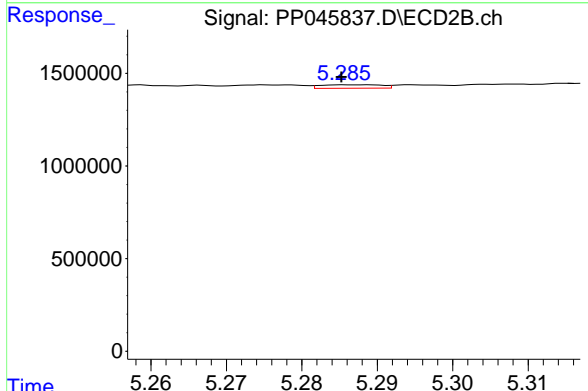




#27 AR-1254-2

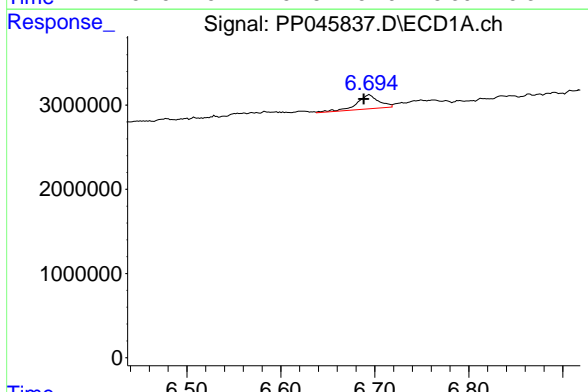
R.T.: 6.284 min  
 Delta R.T.: -0.004 min  
 Response: 1989634  
 Conc: 16.16 ng/ml

Instrument :  
 ECD\_P  
 ClientSampleId :



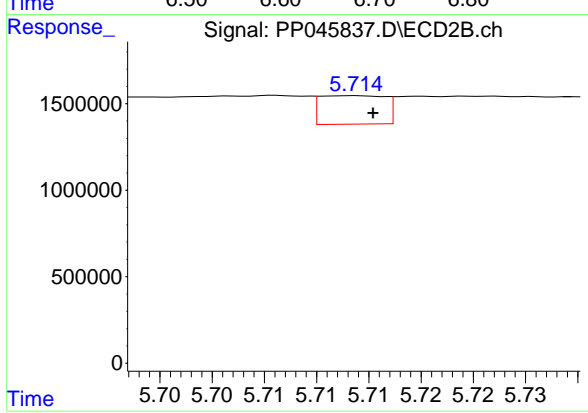
#27 AR-1254-2

R.T.: 5.289 min  
 Delta R.T.: 0.004 min  
 Response: 106969  
 Conc: 1.42 ng/ml



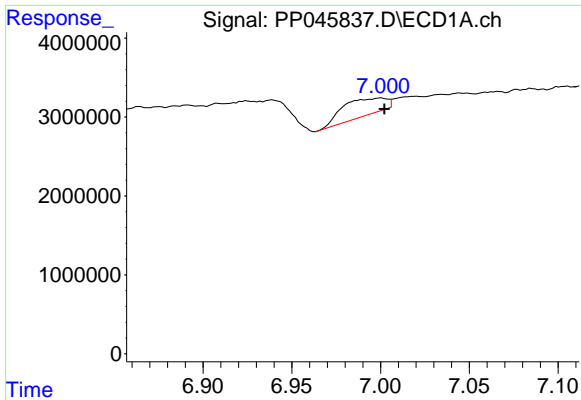
#28 AR-1254-3

R.T.: 6.694 min  
 Delta R.T.: 0.006 min  
 Response: 2707264  
 Conc: 22.52 ng/ml



#28 AR-1254-3

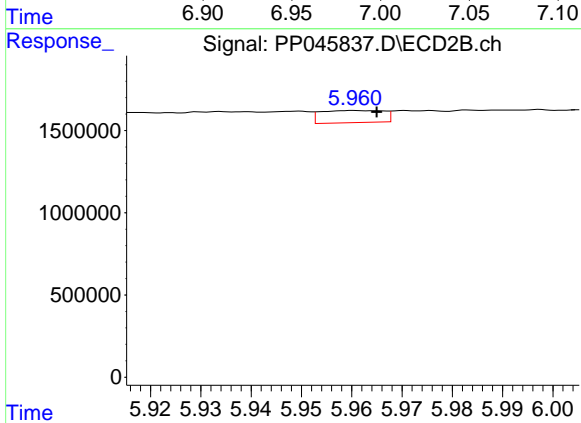
R.T.: 5.714 min  
 Delta R.T.: -0.002 min  
 Response: 710086  
 Conc: 6.04 ng/ml



#29 AR-1254-4

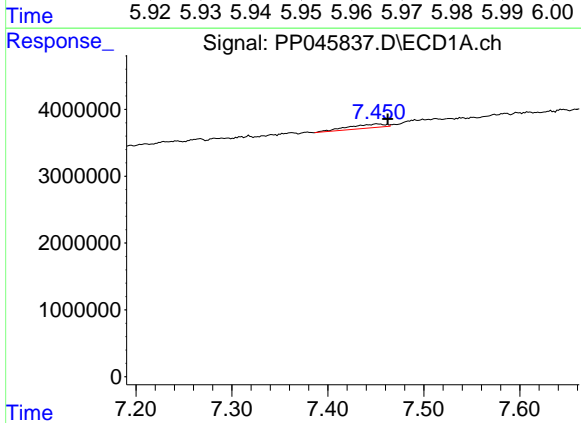
R.T.: 7.000 min  
 Delta R.T.: -0.002 min  
 Response: 3652089  
 Conc: 41.41 ng/ml

Instrument :  
 ECD\_P  
 ClientSampleId :



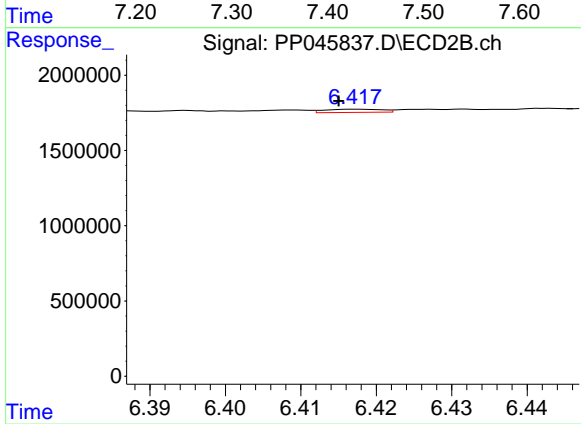
#29 AR-1254-4

R.T.: 5.961 min  
 Delta R.T.: -0.004 min  
 Response: 641358  
 Conc: 8.50 ng/ml



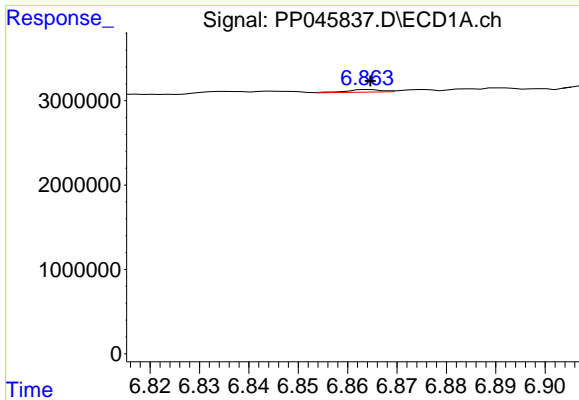
#30 AR-1254-5

R.T.: 7.451 min  
 Delta R.T.: -0.011 min  
 Response: 1557376  
 Conc: 16.62 ng/ml



#30 AR-1254-5

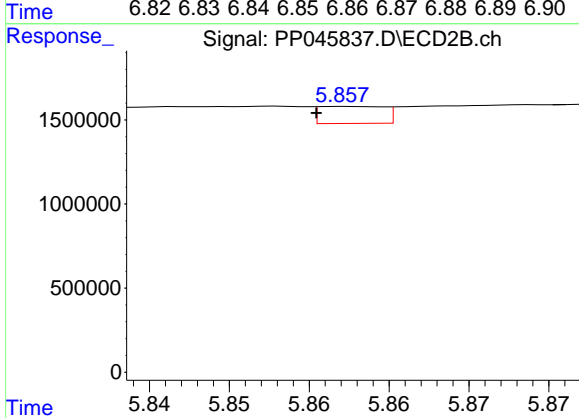
R.T.: 6.417 min  
 Delta R.T.: 0.002 min  
 Response: 111373  
 Conc: 1.09 ng/ml



#31 AR-1260-1

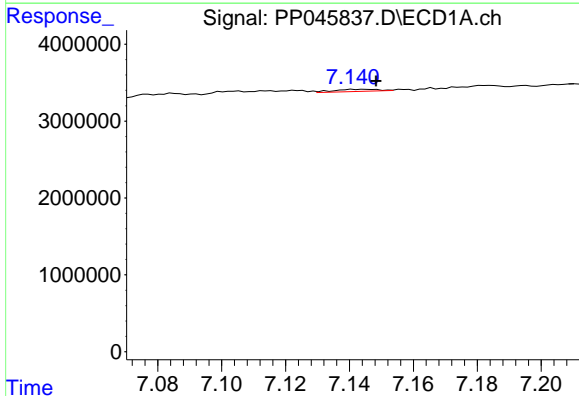
R.T.: 6.864 min  
 Delta R.T.: 0.000 min  
 Response: 142071  
 Conc: 1.61 ng/ml

Instrument :  
 ECD\_P  
 ClientSampleId :



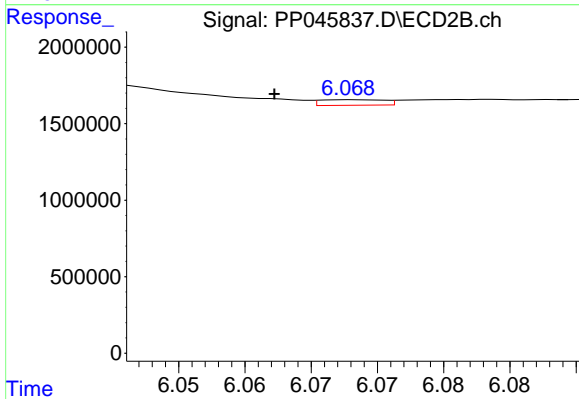
#31 AR-1260-1

R.T.: 5.857 min  
 Delta R.T.: 0.002 min  
 Response: 284917  
 Conc: 3.60 ng/ml



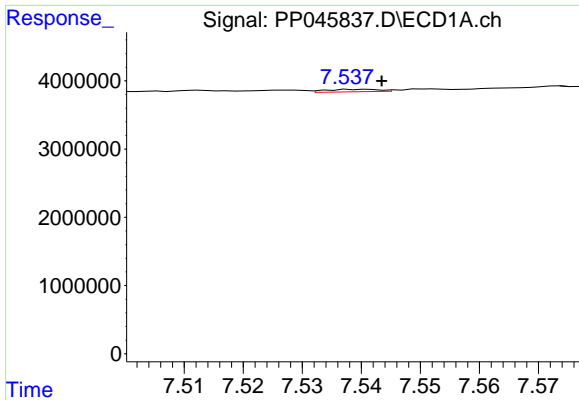
#32 AR-1260-2

R.T.: 7.142 min  
 Delta R.T.: -0.007 min  
 Response: 273432  
 Conc: 2.67 ng/ml



#32 AR-1260-2

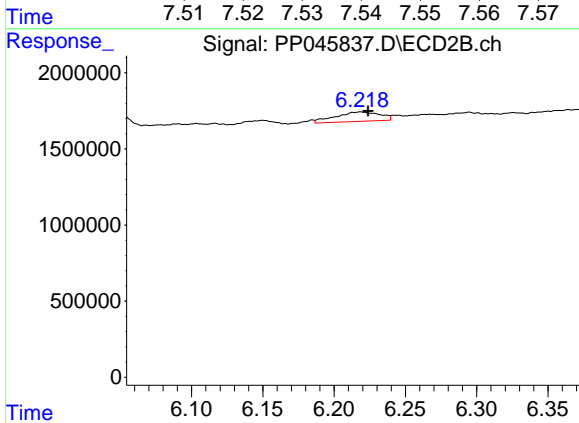
R.T.: 6.068 min  
 Delta R.T.: 0.006 min  
 Response: 121656  
 Conc: 1.30 ng/ml



#33 AR-1260-3

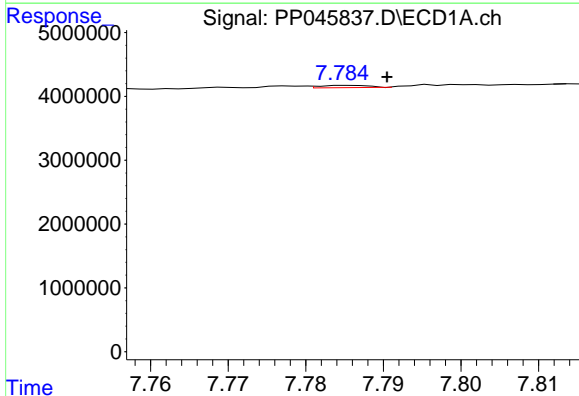
R.T.: 7.541 min  
 Delta R.T.: -0.003 min  
 Response: 223425  
 Conc: 2.71 ng/ml

Instrument :  
 ECD\_P  
 ClientSampleId :



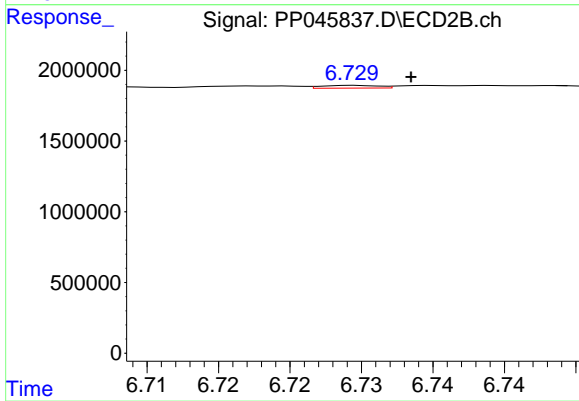
#33 AR-1260-3

R.T.: 6.218 min  
 Delta R.T.: -0.005 min  
 Response: 1343803  
 Conc: 15.17 ng/ml



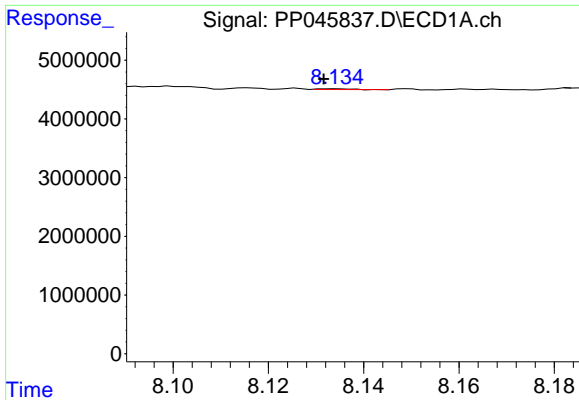
#34 AR-1260-4

R.T.: 7.786 min  
 Delta R.T.: -0.005 min  
 Response: 156027  
 Conc: 1.84 ng/ml



#34 AR-1260-4

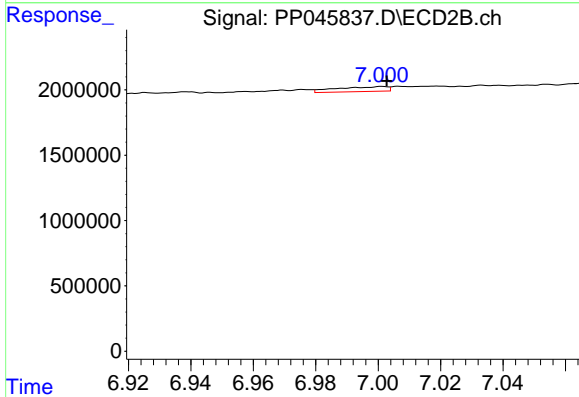
R.T.: 6.730 min  
 Delta R.T.: -0.004 min  
 Response: 52459  
 Conc: 0.73 ng/ml



#35 AR-1260-5

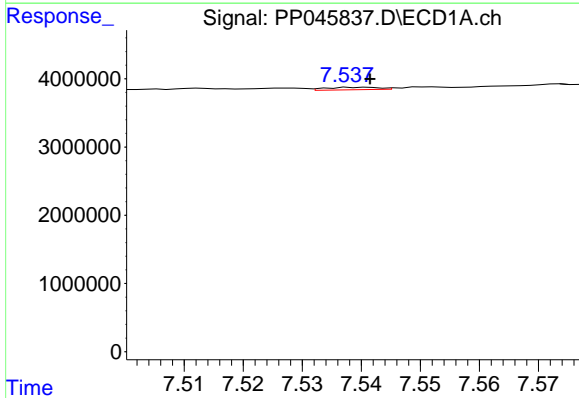
R.T.: 8.134 min  
 Delta R.T.: 0.003 min  
 Response: 64249  
 Conc: 0.39 ng/ml

Instrument :  
 ECD\_P  
 ClientSampleId :



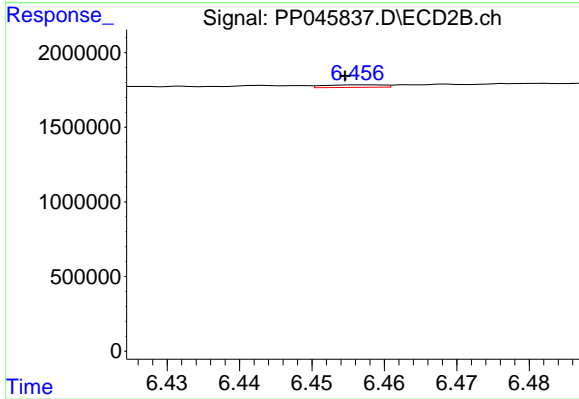
#35 AR-1260-5

R.T.: 7.001 min  
 Delta R.T.: -0.002 min  
 Response: 422975  
 Conc: 2.49 ng/ml



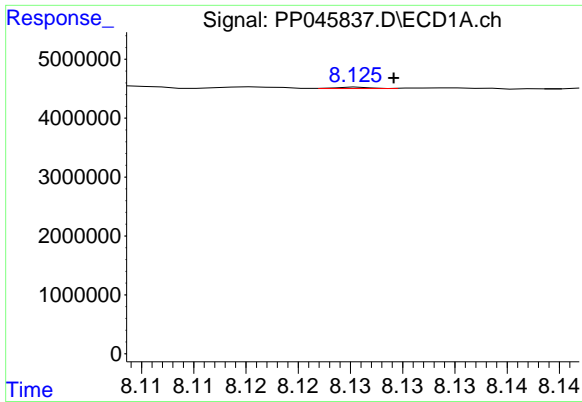
#36 AR-1262-1

R.T.: 7.541 min  
 Delta R.T.: 0.000 min  
 Response: 223425  
 Conc: 1.94 ng/ml



#36 AR-1262-1

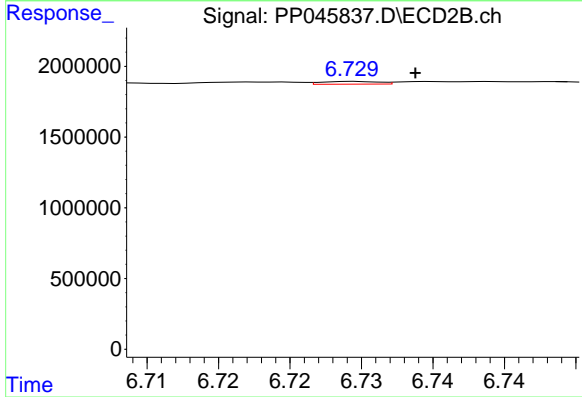
R.T.: 6.456 min  
 Delta R.T.: 0.002 min  
 Response: 97557  
 Conc: 0.92 ng/ml



#37 AR-1262-2

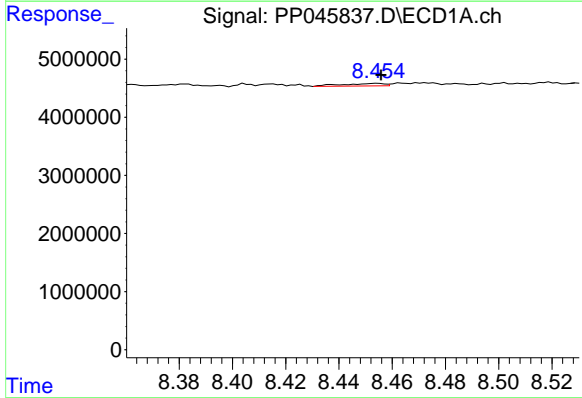
R.T.: 8.126 min  
 Delta R.T.: -0.003 min  
 Response: 48386  
 Conc: 0.27 ng/ml

Instrument :  
 ECD\_P  
 ClientSampleId :



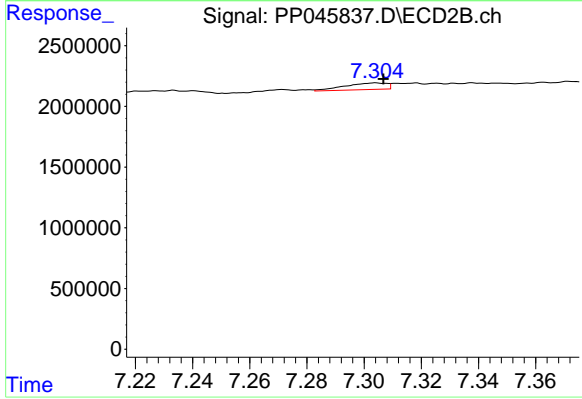
#37 AR-1262-2

R.T.: 6.730 min  
 Delta R.T.: -0.004 min  
 Response: 52459  
 Conc: 0.56 ng/ml



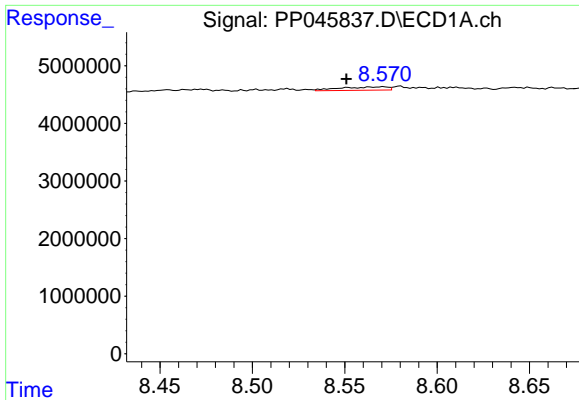
#38 AR-1262-3

R.T.: 8.454 min  
 Delta R.T.: -0.001 min  
 Response: 487606  
 Conc: 3.74 ng/ml



#38 AR-1262-3

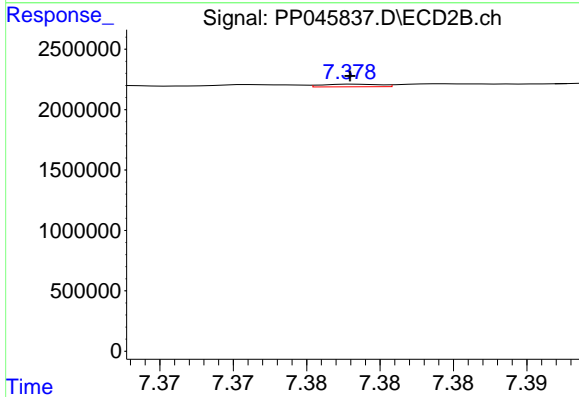
R.T.: 7.304 min  
 Delta R.T.: -0.003 min  
 Response: 551089  
 Conc: 7.20 ng/ml



#39 AR-1262-4

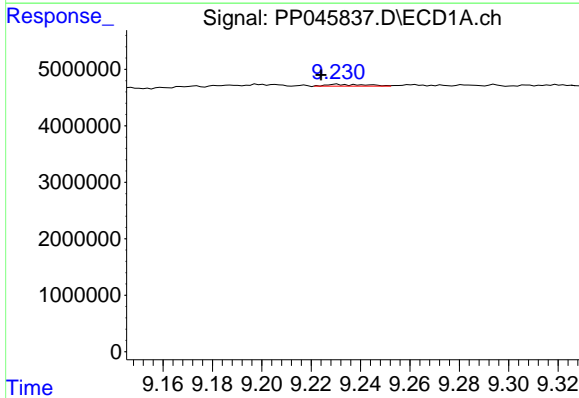
R.T.: 8.571 min  
 Delta R.T.: 0.020 min  
 Response: 1053535  
 Conc: 16.73 ng/ml

Instrument :  
 ECD\_P  
 ClientSampleId :



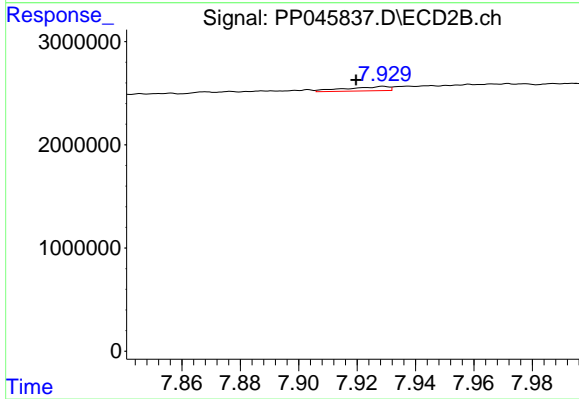
#39 AR-1262-4

R.T.: 7.378 min  
 Delta R.T.: 0.000 min  
 Response: 58903  
 Conc: 0.41 ng/ml



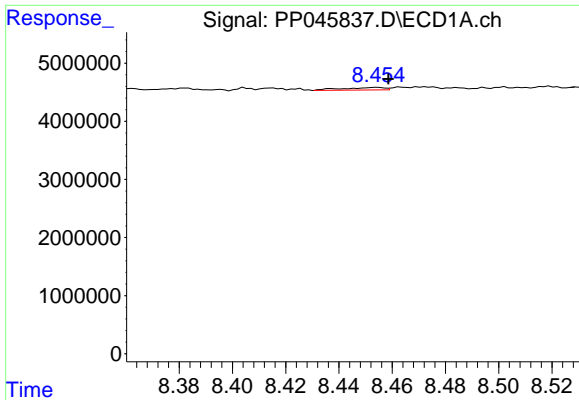
#40 AR-1262-5

R.T.: 9.230 min  
 Delta R.T.: 0.006 min  
 Response: 335939  
 Conc: 4.92 ng/ml



#40 AR-1262-5

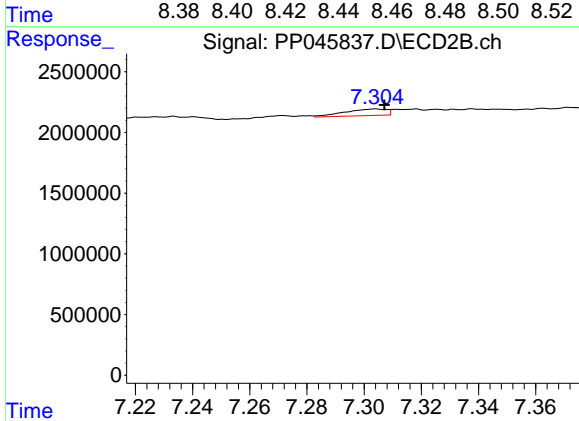
R.T.: 7.929 min  
 Delta R.T.: 0.009 min  
 Response: 417651  
 Conc: 5.96 ng/ml



#41 AR-1268-1

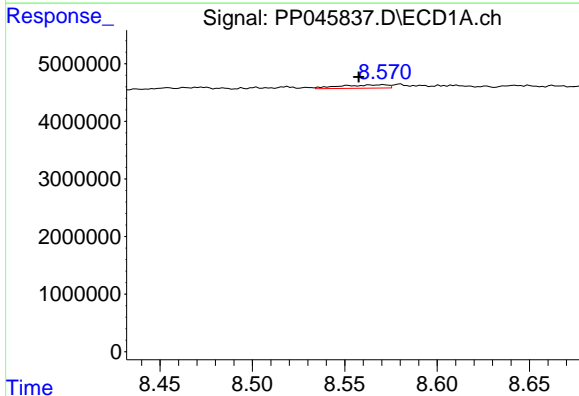
R.T.: 8.454 min  
 Delta R.T.: -0.004 min  
 Response: 487606  
 Conc: 1.79 ng/ml

Instrument :  
 ECD\_P  
 ClientSampleId :



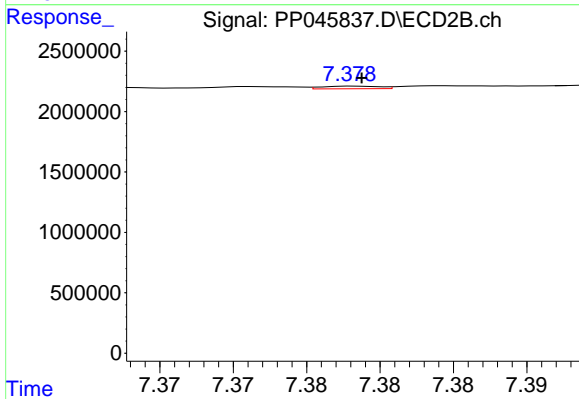
#41 AR-1268-1

R.T.: 7.304 min  
 Delta R.T.: -0.003 min  
 Response: 551089  
 Conc: 2.48 ng/ml



#42 AR-1268-2

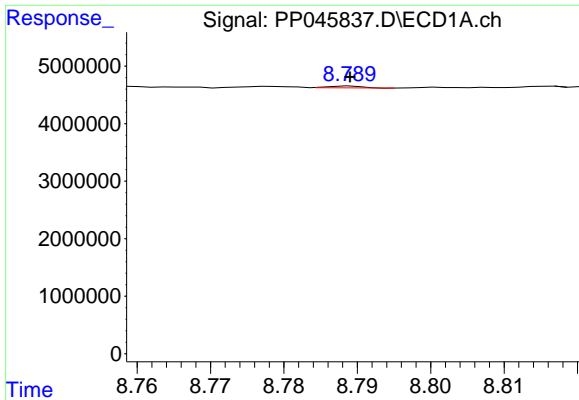
R.T.: 8.571 min  
 Delta R.T.: 0.014 min  
 Response: 1053535  
 Conc: 4.16 ng/ml



#42 AR-1268-2

R.T.: 7.378 min  
 Delta R.T.: 0.000 min  
 Response: 58903  
 Conc: 0.29 ng/ml

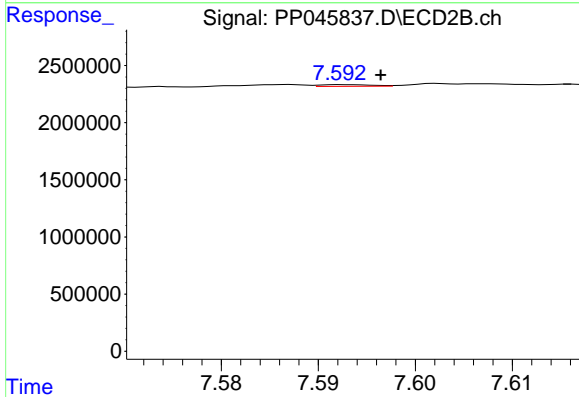




#43 AR-1268-3

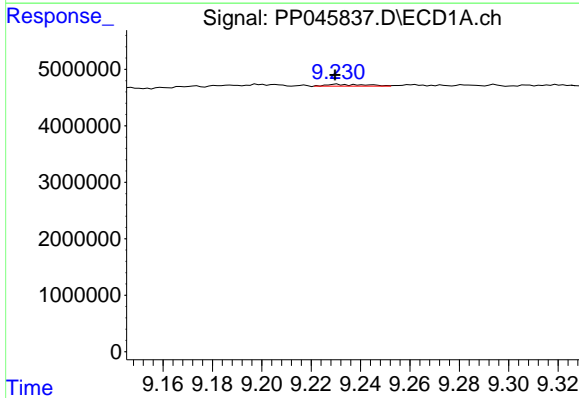
R.T.: 8.789 min  
 Delta R.T.: 0.000 min  
 Response: 94138  
 Conc: 0.41 ng/ml

Instrument :  
 ECD\_P  
 ClientSampleId :



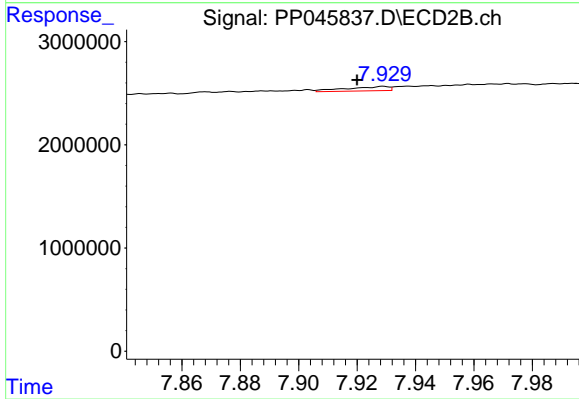
#43 AR-1268-3

R.T.: 7.593 min  
 Delta R.T.: -0.004 min  
 Response: 54500  
 Conc: 0.32 ng/ml



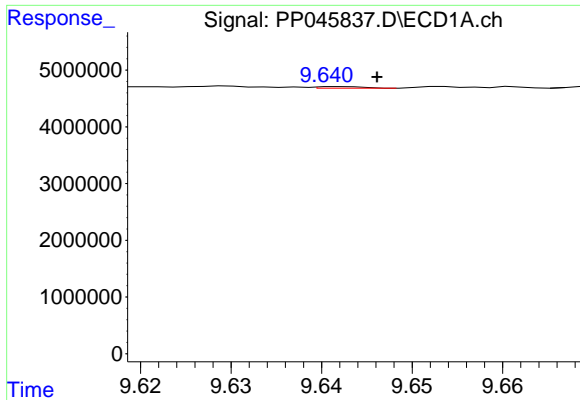
#44 AR-1268-4

R.T.: 9.230 min  
 Delta R.T.: 0.000 min  
 Response: 335939  
 Conc: 3.72 ng/ml



#44 AR-1268-4

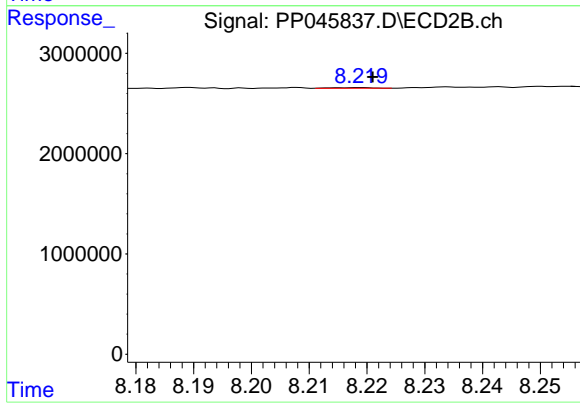
R.T.: 7.929 min  
 Delta R.T.: 0.009 min  
 Response: 417651  
 Conc: 5.29 ng/ml



#45 AR-1268-5

R.T.: 9.642 min  
 Delta R.T.: -0.004 min  
 Response: 95834  
 Conc: 0.14 ng/ml

Instrument :  
 ECD\_P  
 ClientSampleId :



#45 AR-1268-5

R.T.: 8.219 min  
 Delta R.T.: -0.002 min  
 Response: 35358  
 Conc: 0.06 ng/ml