

Data Path : Z:\pestpcbsrv\HPCHEM1\ECD_P\Data\PP041222\
 Data File : PP045849.D
 Signal(s) : Signal #1: ECD1A.ch Signal #2: ECD2B.ch
 Acq On : 11 Apr 2022 22:26
 Operator : YP\AJ
 Sample : AR1242ICC250
 Misc :
 ALS Vial : 13 Sample Multiplier: 1

Instrument :
 ECD_P
 ClientSampleId :
 AR1242ICC250

Integration File signal 1: autoint1.e
 Integration File signal 2: autoint2.e
 Quant Time: Apr 12 06:52:59 2022
 Quant Method : Z:\pestpcbsrv\HPCHEM1\ECD_P\methods\PP041222.M
 Quant Title : GC EXTRACTABLES
 QLast Update : Tue Apr 12 05:31:12 2022
 Response via : Initial Calibration
 Integrator: ChemStation

Volume Inj. : 2 µl
 Signal #1 Phase : ZB-MR1 Signal #2 Phase: ZB-MR2
 Signal #1 Info : 30Mx0.32mmx 0.50µ Signal #2 Info : 30M x 0.32mm x 0.25µm

Compound	RT#1	RT#2	Resp#1	Resp#2	ng/ml	ng/ml
System Monitoring Compounds						
1) SA Tetrachlo...	3.875	3.138	65557465	41830143	26.653	26.325
2) SA Decachlor...	9.977	8.477	41161979	39243569	25.075	27.533
Target Compounds						
3) L1 AR-1016-1	5.125	4.276	14940844	12283386	194.872	209.161
4) L1 AR-1016-2	5.147	4.294	22237294	16930335	192.302	202.649
5) L1 AR-1016-3	5.213	4.478	13585725	9181954	197.182	207.860
6) L1 AR-1016-4	5.319	4.528	11395144	7189836	193.649	201.482
7) L1 AR-1016-5	5.638	4.751	10860164	9852590	196.938	207.398
8) L2 AR-1221-1	4.096	3.363	1598381	1277409	61.355	62.881
9) L2 AR-1221-2	4.193	3.453	2238157	1860794	117.689	122.426
10) L2 AR-1221-3	4.273	3.531	8680615	7036392	141.218	152.467
11) L3 AR-1232-1	4.273	3.531	8680615	7036392	152.955	165.848
12) L3 AR-1232-2	4.835	4.294	11346869	16930335	425.502	422.418
13) L3 AR-1232-3	5.147	4.478	22237294	9181954	413.116	427.314
14) L3 AR-1232-4	5.319	4.570	11395144	9021653	430.763	476.183
15) L3 AR-1232-5	5.420	4.751	8569670	9852590	464.906	460.743
16) L4 AR-1242-1	5.125	4.276	14940844	12283386	249.996	265.485
17) L4 AR-1242-2	5.147	4.294	22237294	16930335	247.718	261.088
18) L4 AR-1242-3	5.213	4.478	13585725	9181954	244.903	265.354
19) L4 AR-1242-4	5.319	4.570	11395144	9021653	251.099	268.394
20) L4 AR-1242-5	6.117	5.127	11346995	11606061	244.295	264.265
21) L5 AR-1248-1	5.125	4.276	14940844	12283386	346.346	358.187
22) L5 AR-1248-2	5.420	4.528	8569670	7189836	143.349	153.475
23) L5 AR-1248-3	5.638	4.570	10860164	9021653	155.252	184.573
24) L5 AR-1248-4	6.077	4.751	10677607	9852590	135.051	169.575 #
25) L5 AR-1248-5	6.117	5.169	11346995	9789007	144.929	166.777
26) L6 AR-1254-1	6.046	5.127	7930773	11606061	95.957	131.575 #
27) L6 AR-1254-2	6.289	5.286	9262870	2705215	75.219	35.844 #
28) L6 AR-1254-3	6.687	5.716	3576788	3748508	29.755	31.872
29) L6 AR-1254-4	7.000	5.966	2542409	2861941	28.827	37.924 #
30) L6 AR-1254-5	7.457	6.416	1054980	757523	11.262	7.394 #
31) L7 AR-1260-1	6.863	5.845	239727	991005	2.716	12.521 #
32) L7 AR-1260-2	7.139	6.062	1062489	478558	10.371	5.112 #
33) L7 AR-1260-3	7.543	6.220	38053	1229360	0.462	13.878 #
34) L7 AR-1260-4	7.794	6.716f	57114	70387	0.674	0.980 #
35) L7 AR-1260-5	8.129	6.990	-20668	52564	N.D.	0.309 #
36) L8 AR-1262-1	7.543	6.439f	38053	139507	0.331	1.319 #
37) L8 AR-1262-2	8.129	6.716f	-20668	70387	N.D.	0.748 #
38) L8 AR-1262-3	8.451	7.318	218656	324948	1.678	4.244 #
39) L8 AR-1262-4	8.555	7.403f	208540	648988	3.311	4.562 #
40) L8 AR-1262-5	9.229	7.918	119165	561129	1.745	8.010 #
41) L9 AR-1268-1	8.451	7.318	218656	324948	0.804	1.465 #

Data Path : Z:\pestpcbsrv\HPCHEM1\ECD_P\Data\PP041222\
 Data File : PP045849.D
 Signal(s) : Signal #1: ECD1A.ch Signal #2: ECD2B.ch
 Acq On : 11 Apr 2022 22:26
 Operator : YP\AJ
 Sample : AR1242ICC250
 Misc :
 ALS Vial : 13 Sample Multiplier: 1

Instrument :
 ECD_P
 ClientSampleId :
 AR1242ICC250

Integration File signal 1: autoint1.e
 Integration File signal 2: autoint2.e
 Quant Time: Apr 12 06:52:59 2022
 Quant Method : Z:\pestpcbsrv\HPCHEM1\ECD_P\methods\PP041222.M
 Quant Title : GC EXTRACTABLES
 QLast Update : Tue Apr 12 05:31:12 2022
 Response via : Initial Calibration
 Integrator: ChemStation

Volume Inj. : 2 µl
 Signal #1 Phase : ZB-MR1 Signal #2 Phase: ZB-MR2
 Signal #1 Info : 30Mx0.32mmx 0.50µ Signal #2 Info : 30M x 0.32mm x 0.25µm

	Compound	RT#1	RT#2	Resp#1	Resp#2	ng/ml	ng/ml
42)	L9 AR-1268-2	8.555	7.403f	208540	648988	0.824	3.203 #
43)	L9 AR-1268-3	8.785	7.612f	159103	350723	0.700	2.059 #
44)	L9 AR-1268-4	9.229	7.918	119165	561129	1.320	7.110 #
45)	L9 AR-1268-5	9.646	8.217	547290	163514	0.805	0.295 #

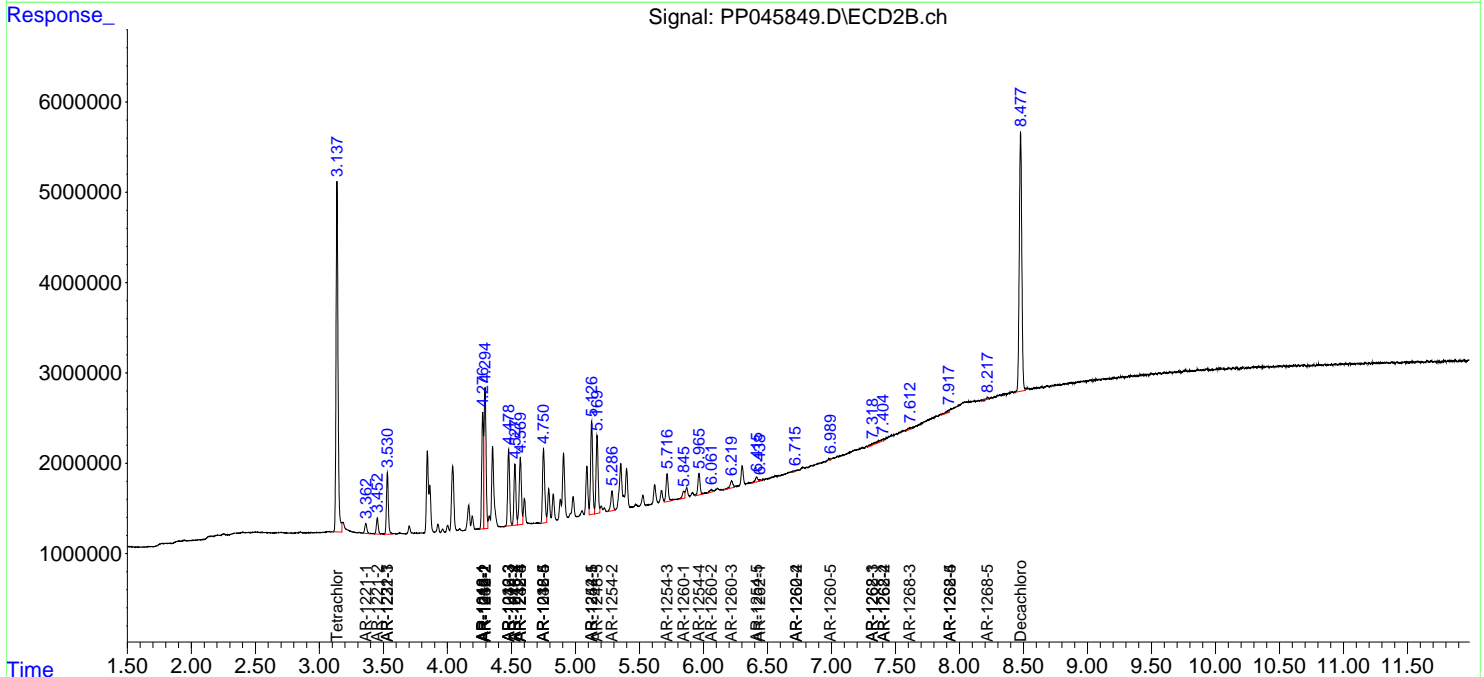
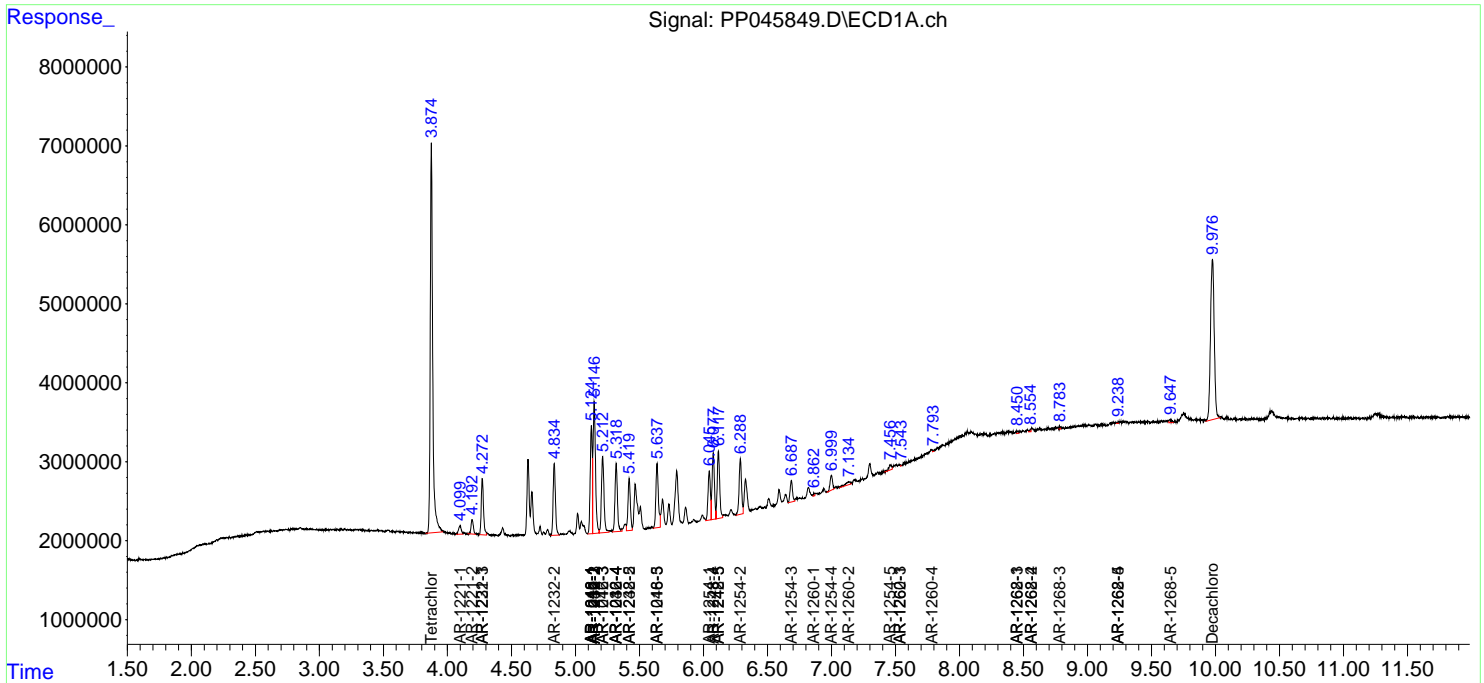
(f)=RT Delta > 1/2 Window (#)=Amounts differ by > 25% (m)=manual int.

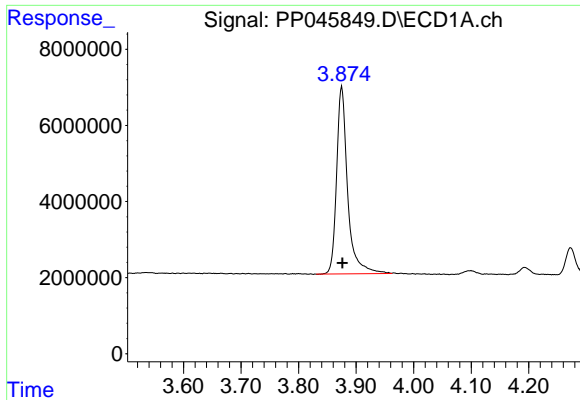
Data Path : Z:\pestpcbsrv\HPCHEM1\ECD_P\Data\PP041222\
 Data File : PP045849.D
 Signal(s) : Signal #1: ECD1A.ch Signal #2: ECD2B.ch
 Acq On : 11 Apr 2022 22:26
 Operator : YP\AJ
 Sample : AR1242ICC250
 Misc :
 ALS Vial : 13 Sample Multiplier: 1

Instrument :
 ECD_P
 ClientSampleId :
 AR1242ICC250

Integration File signal 1: autoint1.e
 Integration File signal 2: autoint2.e
 Quant Time: Apr 12 06:52:59 2022
 Quant Method : Z:\pestpcbsrv\HPCHEM1\ECD_P\methods\PP041222.M
 Quant Title : GC EXTRACTABLES
 QLast Update : Tue Apr 12 05:31:12 2022
 Response via : Initial Calibration
 Integrator: ChemStation

Volume Inj. : 2 µl
 Signal #1 Phase : ZB-MR1 Signal #2 Phase: ZB-MR2
 Signal #1 Info : 30Mx0.32mmx 0.50µ Signal #2 Info : 30M x 0.32mm x 0.25µm

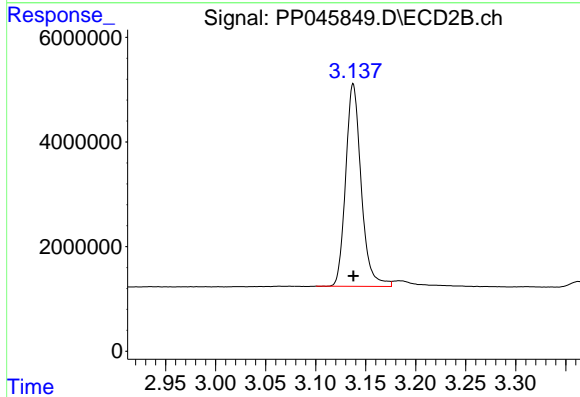




#1 Tetrachloro-m-xylene

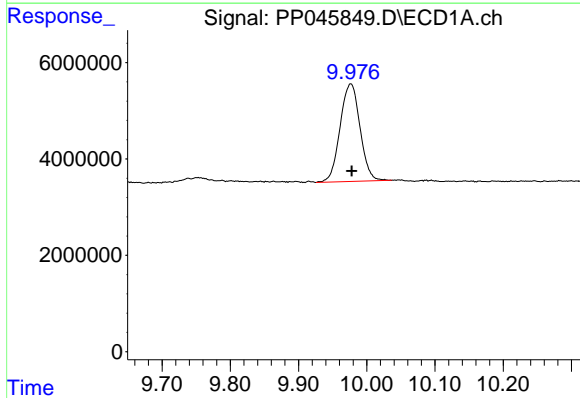
R.T.: 3.875 min
 Delta R.T.: -0.001 min
 Response: 65557465
 Conc: 26.65 ng/ml

Instrument :
 ECD_P
 ClientSampleId :
 AR1242ICC250



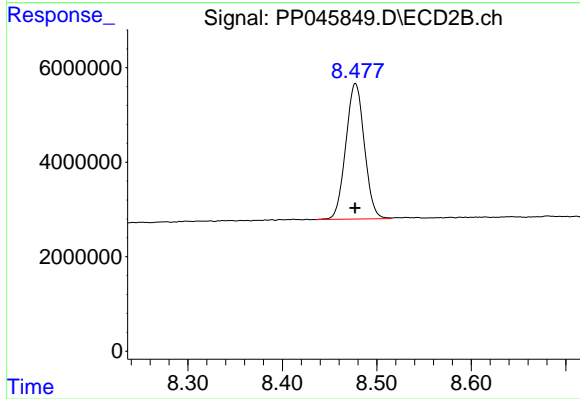
#1 Tetrachloro-m-xylene

R.T.: 3.138 min
 Delta R.T.: 0.000 min
 Response: 41830143
 Conc: 26.33 ng/ml



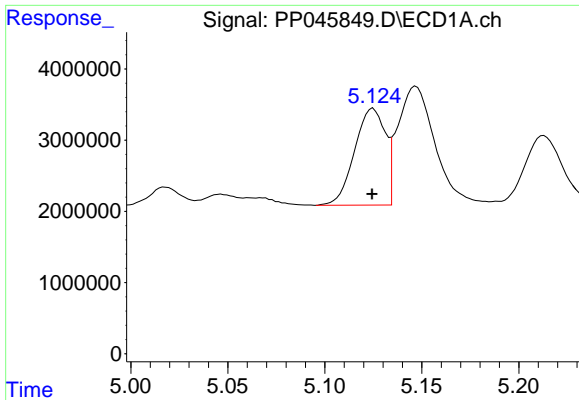
#2 Decachlorobiphenyl

R.T.: 9.977 min
 Delta R.T.: 0.000 min
 Response: 41161979
 Conc: 25.07 ng/ml



#2 Decachlorobiphenyl

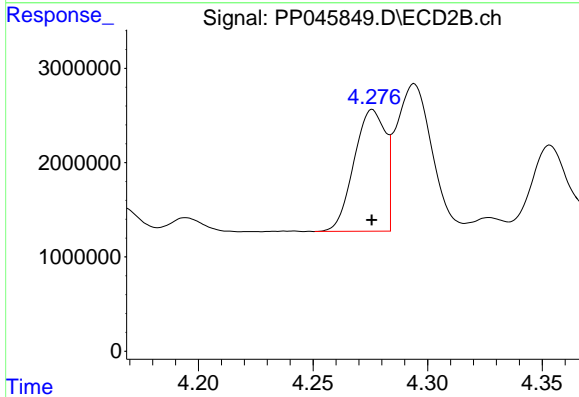
R.T.: 8.477 min
 Delta R.T.: 0.000 min
 Response: 39243569
 Conc: 27.53 ng/ml



#3 AR-1016-1

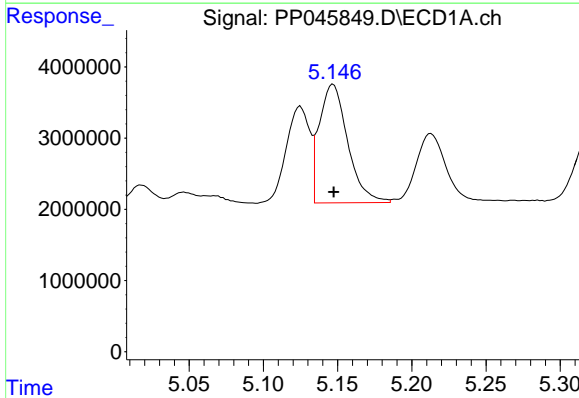
R.T.: 5.125 min
 Delta R.T.: 0.000 min
 Response: 14940844
 Conc: 194.87 ng/ml

Instrument :
 ECD_P
 ClientSampleId :
 AR1242ICC250



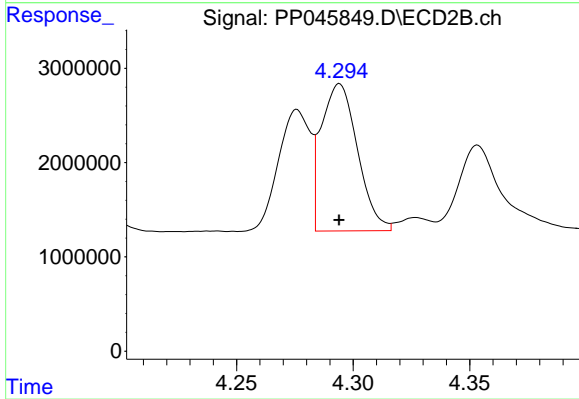
#3 AR-1016-1

R.T.: 4.276 min
 Delta R.T.: 0.000 min
 Response: 12283386
 Conc: 209.16 ng/ml



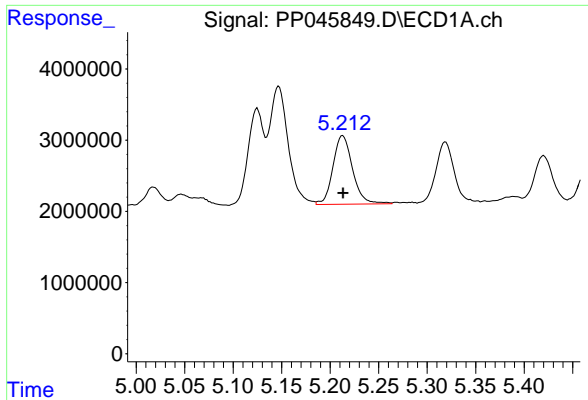
#4 AR-1016-2

R.T.: 5.147 min
 Delta R.T.: 0.000 min
 Response: 22237294
 Conc: 192.30 ng/ml



#4 AR-1016-2

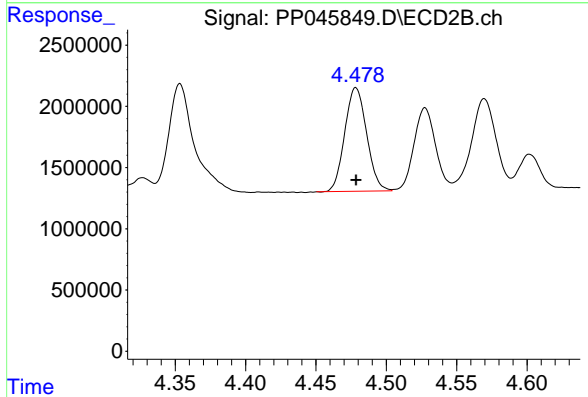
R.T.: 4.294 min
 Delta R.T.: 0.000 min
 Response: 16930335
 Conc: 202.65 ng/ml



#5 AR-1016-3

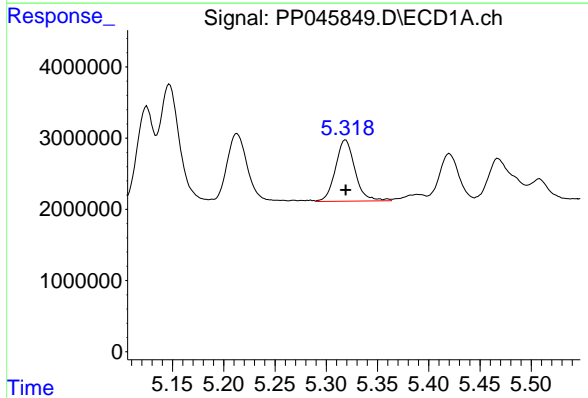
R.T.: 5.213 min
 Delta R.T.: 0.000 min
 Response: 13585725
 Conc: 197.18 ng/ml

Instrument :
 ECD_P
 ClientSampleId :
 AR1242ICC250



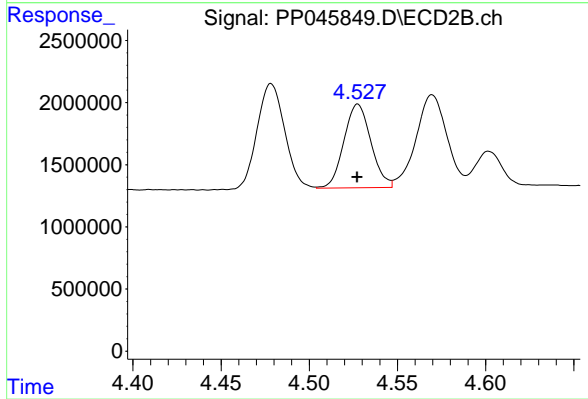
#5 AR-1016-3

R.T.: 4.478 min
 Delta R.T.: 0.000 min
 Response: 9181954
 Conc: 207.86 ng/ml



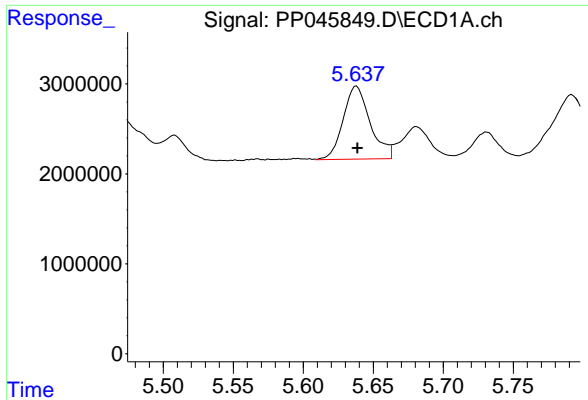
#6 AR-1016-4

R.T.: 5.319 min
 Delta R.T.: 0.000 min
 Response: 11395144
 Conc: 193.65 ng/ml



#6 AR-1016-4

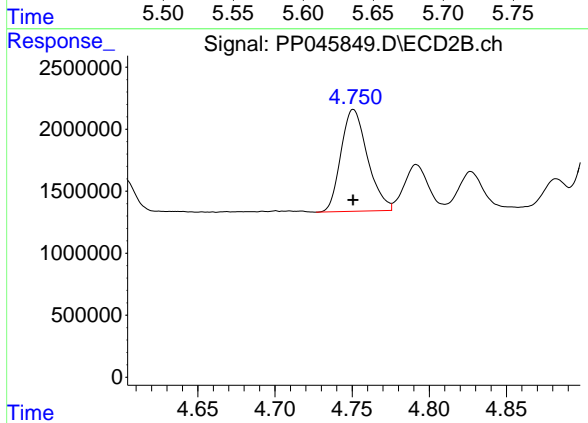
R.T.: 4.528 min
 Delta R.T.: 0.000 min
 Response: 7189836
 Conc: 201.48 ng/ml



#7 AR-1016-5

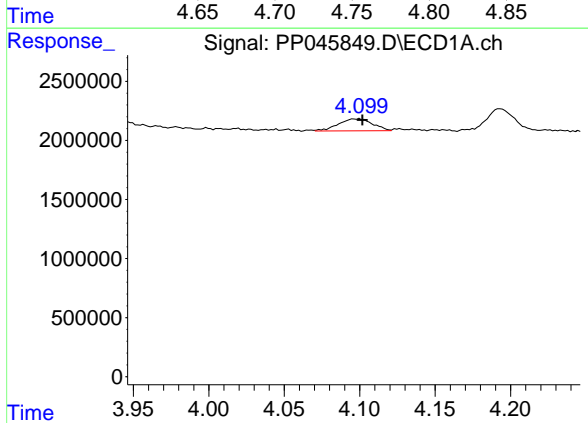
R.T.: 5.638 min
 Delta R.T.: 0.000 min
 Response: 10860164
 Conc: 196.94 ng/ml

Instrument :
 ECD_P
 ClientSampleId :
 AR1242ICC250



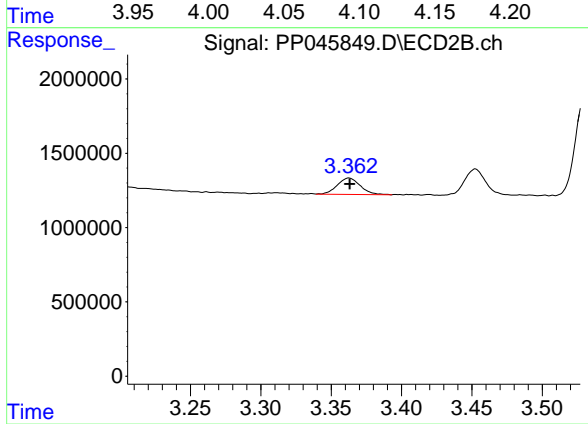
#7 AR-1016-5

R.T.: 4.751 min
 Delta R.T.: 0.000 min
 Response: 9852590
 Conc: 207.40 ng/ml



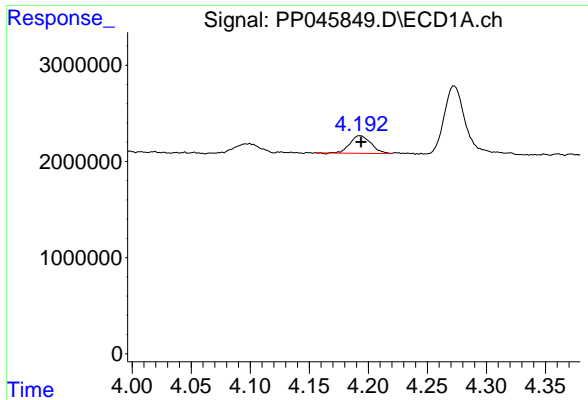
#8 AR-1221-1

R.T.: 4.096 min
 Delta R.T.: -0.006 min
 Response: 1598381
 Conc: 61.35 ng/ml



#8 AR-1221-1

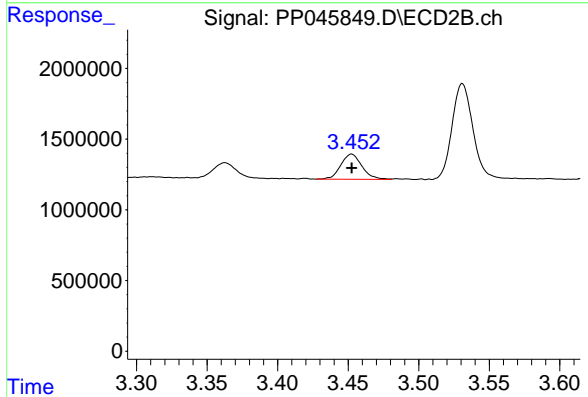
R.T.: 3.363 min
 Delta R.T.: 0.000 min
 Response: 1277409
 Conc: 62.88 ng/ml



#9 AR-1221-2

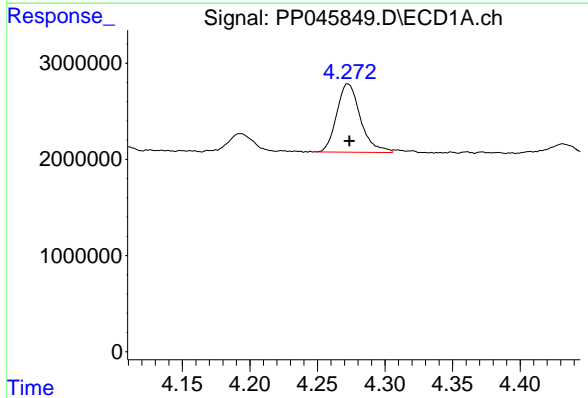
R.T.: 4.193 min
 Delta R.T.: 0.000 min
 Response: 2238157
 Conc: 117.69 ng/ml

Instrument :
 ECD_P
 ClientSampleId :
 AR1242ICC250



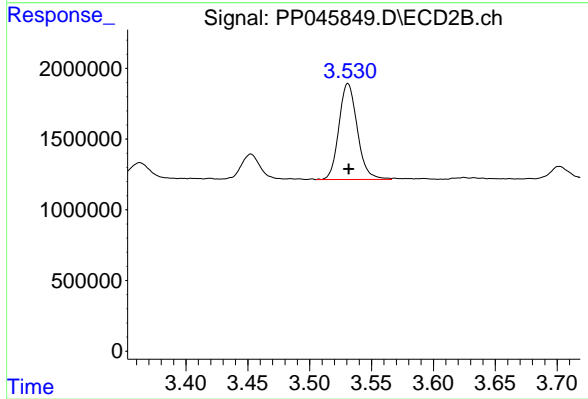
#9 AR-1221-2

R.T.: 3.453 min
 Delta R.T.: 0.000 min
 Response: 1860794
 Conc: 122.43 ng/ml



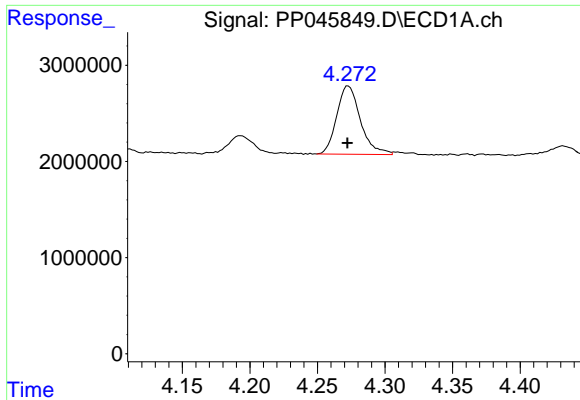
#10 AR-1221-3

R.T.: 4.273 min
 Delta R.T.: 0.000 min
 Response: 8680615
 Conc: 141.22 ng/ml



#10 AR-1221-3

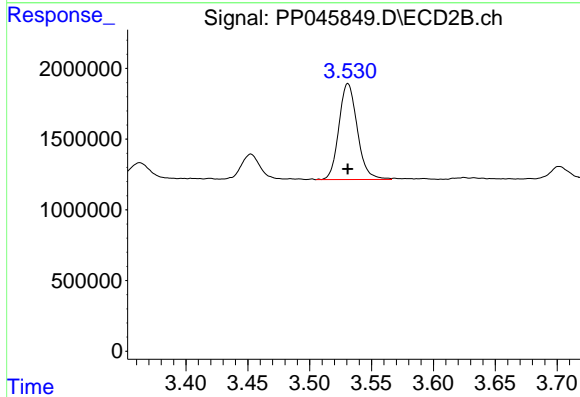
R.T.: 3.531 min
 Delta R.T.: 0.000 min
 Response: 7036392
 Conc: 152.47 ng/ml



#11 AR-1232-1

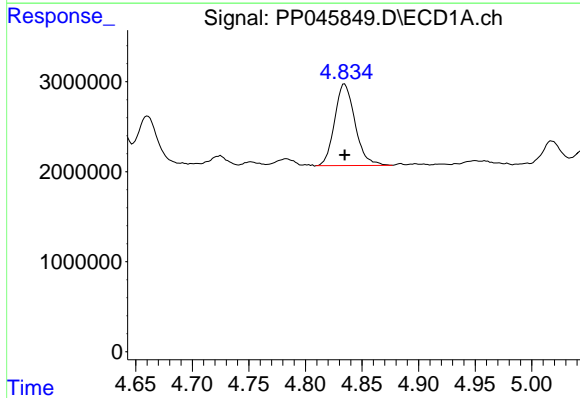
R.T.: 4.273 min
Delta R.T.: 0.000 min
Response: 8680615
Conc: 152.96 ng/ml

Instrument :
ECD_P
ClientSampleId :
AR1242ICC250



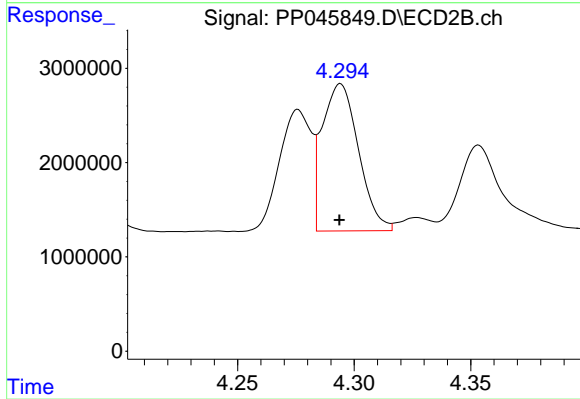
#11 AR-1232-1

R.T.: 3.531 min
Delta R.T.: 0.000 min
Response: 7036392
Conc: 165.85 ng/ml



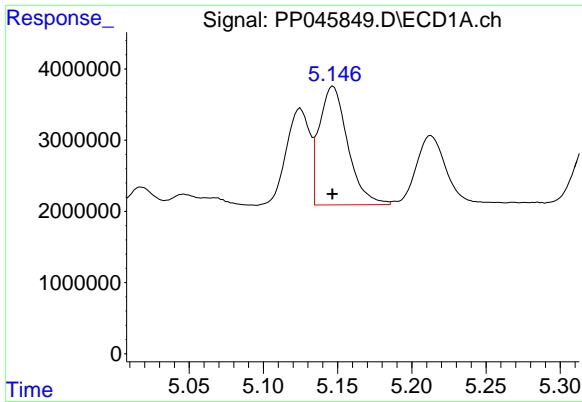
#12 AR-1232-2

R.T.: 4.835 min
Delta R.T.: 0.000 min
Response: 11346869
Conc: 425.50 ng/ml



#12 AR-1232-2

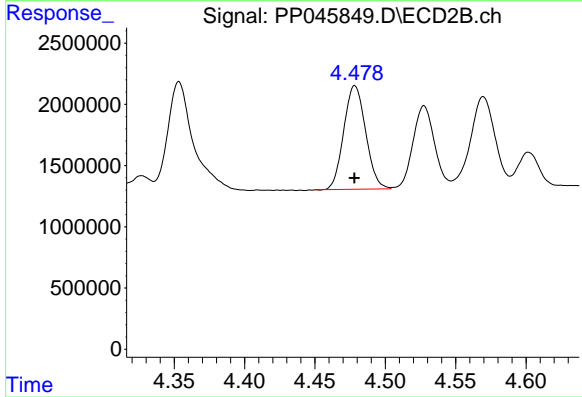
R.T.: 4.294 min
Delta R.T.: 0.000 min
Response: 16930335
Conc: 422.42 ng/ml



#13 AR-1232-3

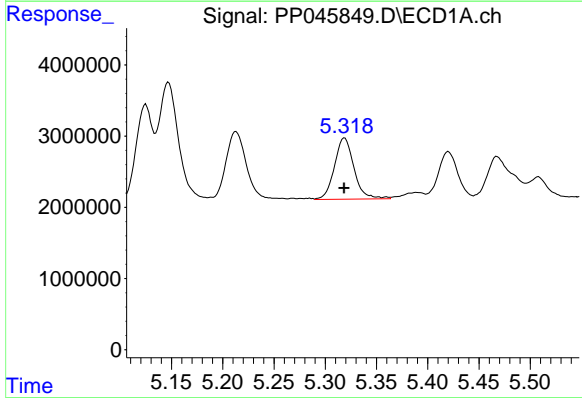
R.T.: 5.147 min
 Delta R.T.: 0.000 min
 Response: 22237294
 Conc: 413.12 ng/ml

Instrument :
 ECD_P
 ClientSampleId :
 AR1242ICC250



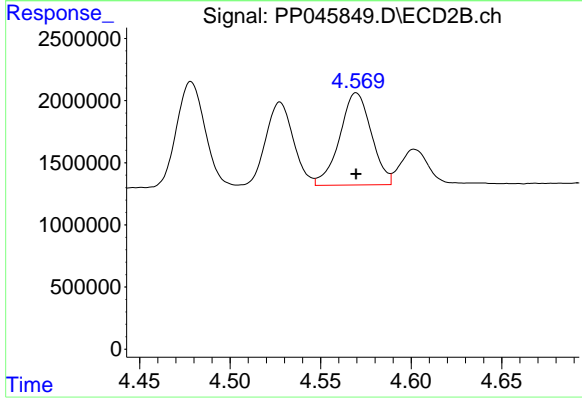
#13 AR-1232-3

R.T.: 4.478 min
 Delta R.T.: 0.000 min
 Response: 9181954
 Conc: 427.31 ng/ml



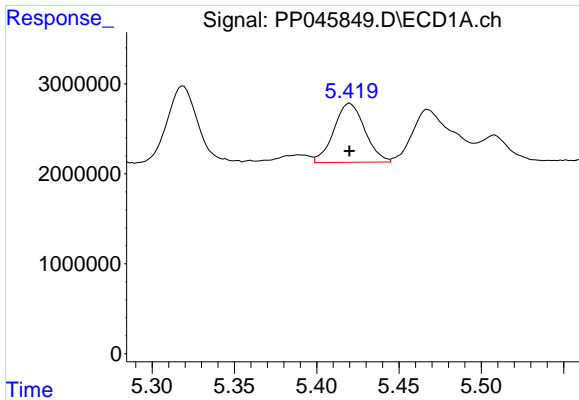
#14 AR-1232-4

R.T.: 5.319 min
 Delta R.T.: 0.000 min
 Response: 11395144
 Conc: 430.76 ng/ml



#14 AR-1232-4

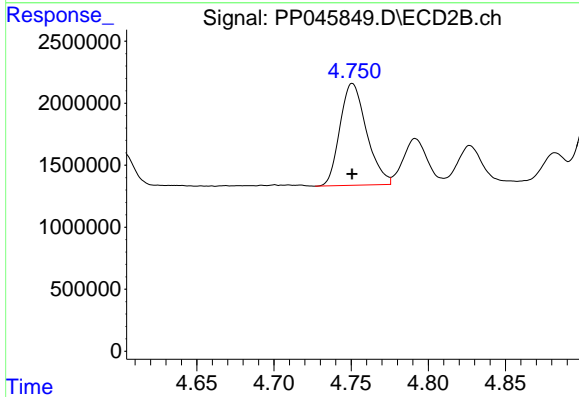
R.T.: 4.570 min
 Delta R.T.: 0.000 min
 Response: 9021653
 Conc: 476.18 ng/ml



#15 AR-1232-5

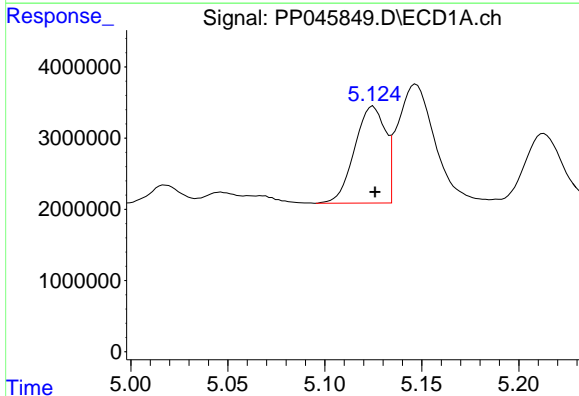
R.T.: 5.420 min
 Delta R.T.: 0.000 min
 Response: 8569670
 Conc: 464.91 ng/ml

Instrument :
 ECD_P
 ClientSampleId :
 AR1242ICC250



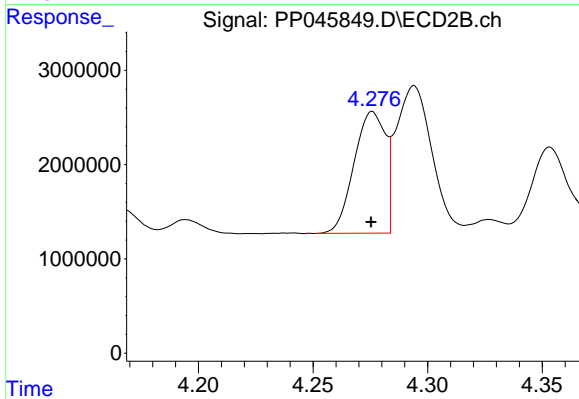
#15 AR-1232-5

R.T.: 4.751 min
 Delta R.T.: 0.000 min
 Response: 9852590
 Conc: 460.74 ng/ml



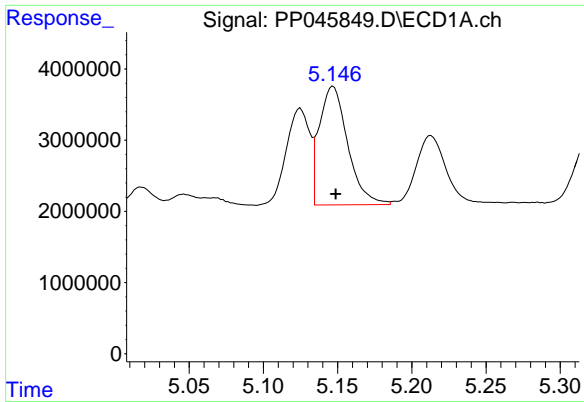
#16 AR-1242-1

R.T.: 5.125 min
 Delta R.T.: -0.001 min
 Response: 14940844
 Conc: 250.00 ng/ml



#16 AR-1242-1

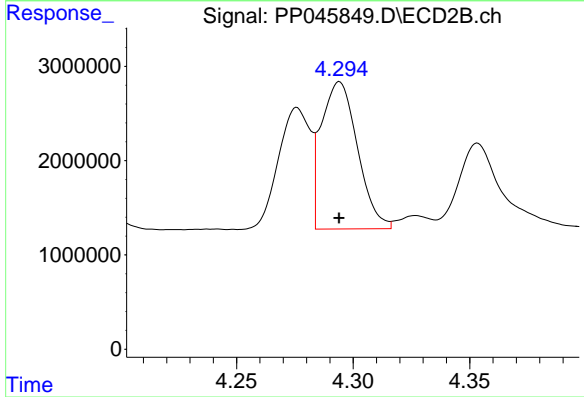
R.T.: 4.276 min
 Delta R.T.: 0.000 min
 Response: 12283386
 Conc: 265.49 ng/ml



#17 AR-1242-2

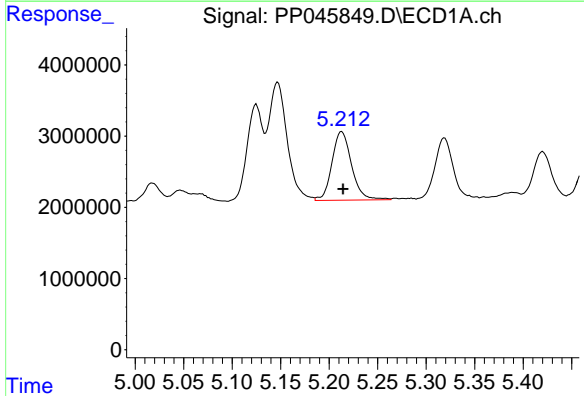
R.T.: 5.147 min
 Delta R.T.: -0.002 min
 Response: 22237294
 Conc: 247.72 ng/ml

Instrument :
 ECD_P
 ClientSampleId :
 AR1242ICC250



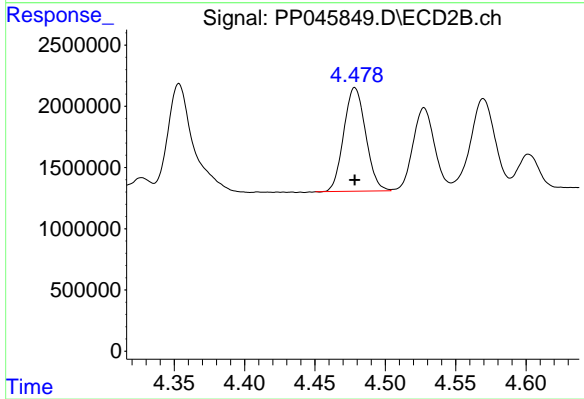
#17 AR-1242-2

R.T.: 4.294 min
 Delta R.T.: 0.000 min
 Response: 16930335
 Conc: 261.09 ng/ml



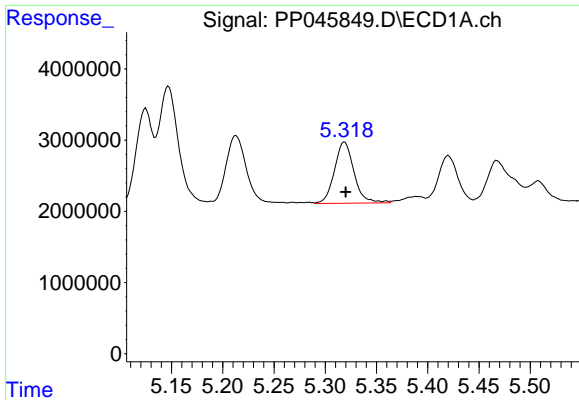
#18 AR-1242-3

R.T.: 5.213 min
 Delta R.T.: -0.001 min
 Response: 13585725
 Conc: 244.90 ng/ml



#18 AR-1242-3

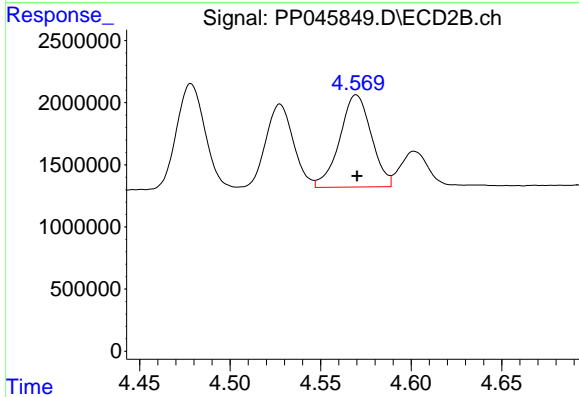
R.T.: 4.478 min
 Delta R.T.: 0.000 min
 Response: 9181954
 Conc: 265.35 ng/ml



#19 AR-1242-4

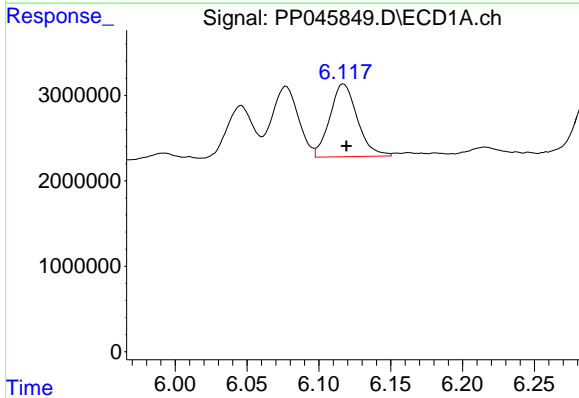
R.T.: 5.319 min
 Delta R.T.: -0.001 min
 Response: 11395144
 Conc: 251.10 ng/ml

Instrument :
 ECD_P
 ClientSampleId :
 AR1242ICC250



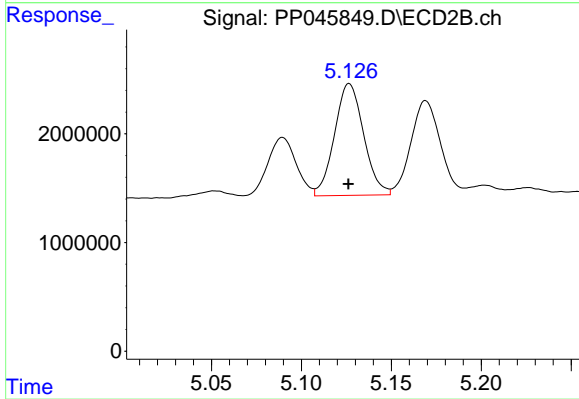
#19 AR-1242-4

R.T.: 4.570 min
 Delta R.T.: 0.000 min
 Response: 9021653
 Conc: 268.39 ng/ml



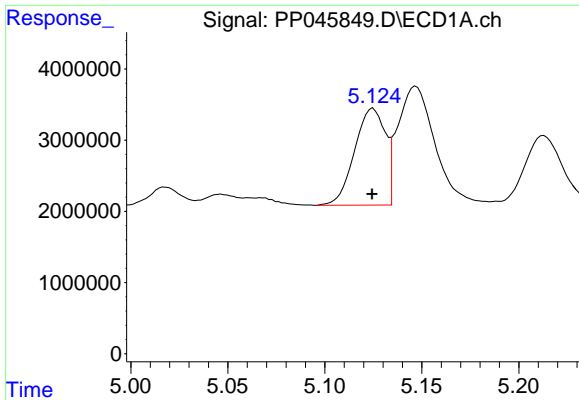
#20 AR-1242-5

R.T.: 6.117 min
 Delta R.T.: -0.002 min
 Response: 11346995
 Conc: 244.29 ng/ml



#20 AR-1242-5

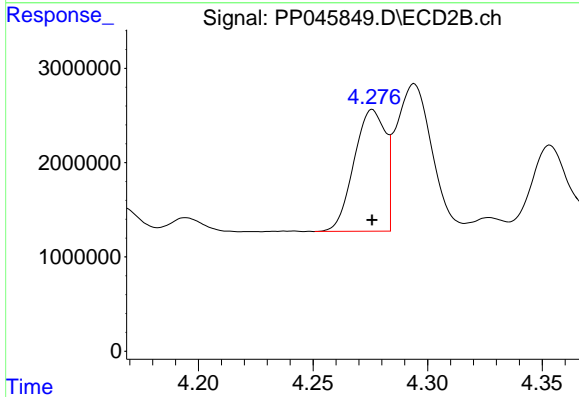
R.T.: 5.127 min
 Delta R.T.: 0.000 min
 Response: 11606061
 Conc: 264.27 ng/ml



#21 AR-1248-1

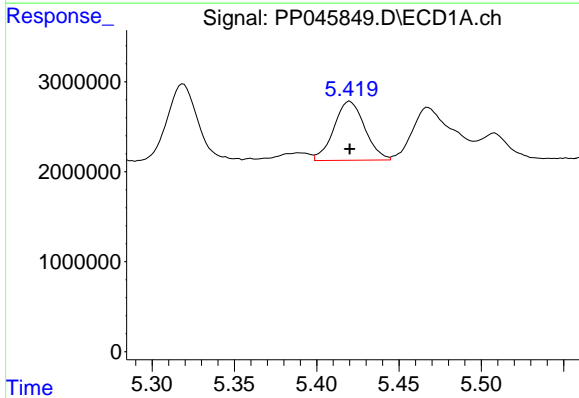
R.T.: 5.125 min
 Delta R.T.: 0.000 min
 Response: 14940844
 Conc: 346.35 ng/ml

Instrument :
 ECD_P
 ClientSampleId :
 AR1242ICC250



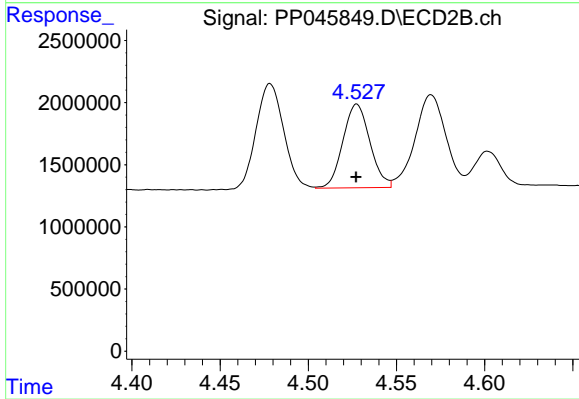
#21 AR-1248-1

R.T.: 4.276 min
 Delta R.T.: 0.000 min
 Response: 12283386
 Conc: 358.19 ng/ml



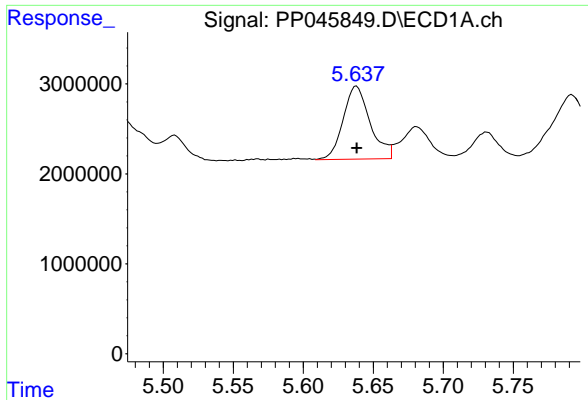
#22 AR-1248-2

R.T.: 5.420 min
 Delta R.T.: 0.000 min
 Response: 8569670
 Conc: 143.35 ng/ml



#22 AR-1248-2

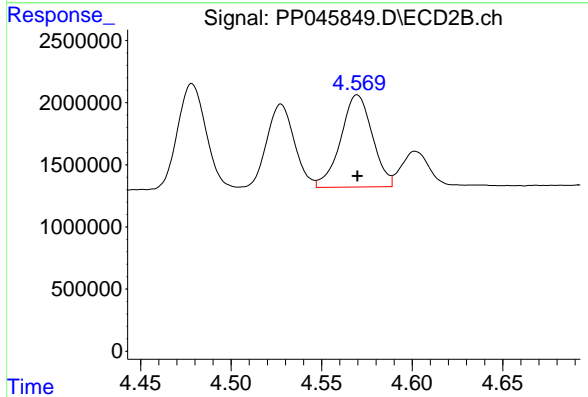
R.T.: 4.528 min
 Delta R.T.: 0.000 min
 Response: 7189836
 Conc: 153.48 ng/ml



#23 AR-1248-3

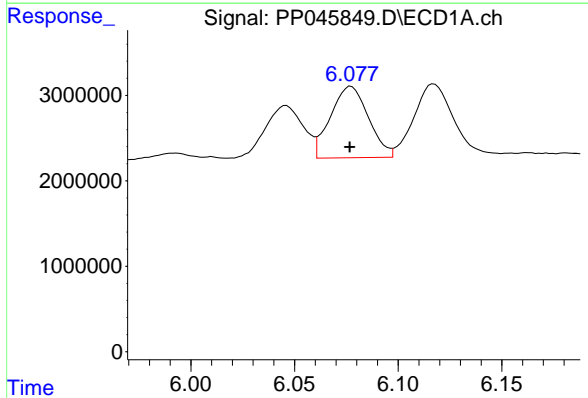
R.T.: 5.638 min
 Delta R.T.: 0.000 min
 Response: 10860164
 Conc: 155.25 ng/ml

Instrument :
 ECD_P
 ClientSampleId :
 AR1242ICC250



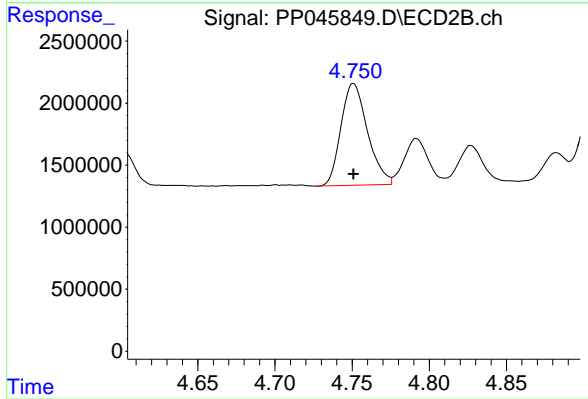
#23 AR-1248-3

R.T.: 4.570 min
 Delta R.T.: 0.000 min
 Response: 9021653
 Conc: 184.57 ng/ml



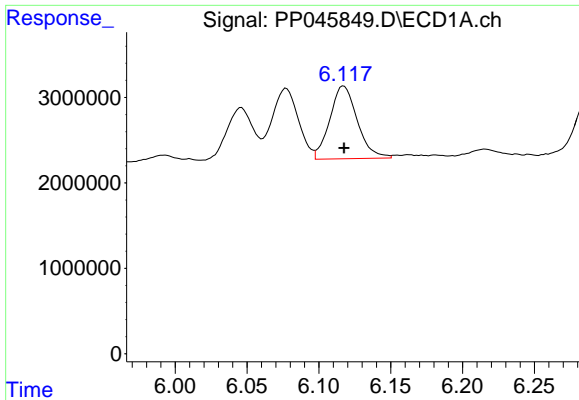
#24 AR-1248-4

R.T.: 6.077 min
 Delta R.T.: 0.000 min
 Response: 10677607
 Conc: 135.05 ng/ml



#24 AR-1248-4

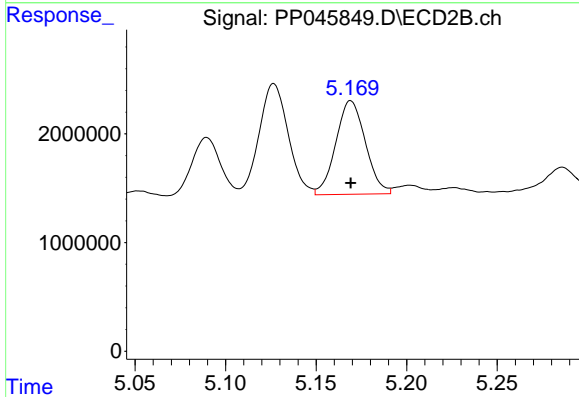
R.T.: 4.751 min
 Delta R.T.: 0.000 min
 Response: 9852590
 Conc: 169.58 ng/ml



#25 AR-1248-5

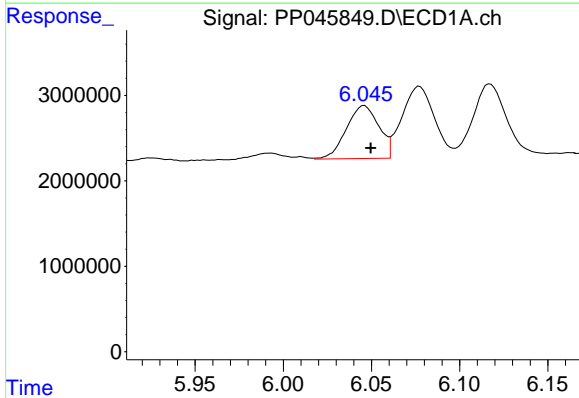
R.T.: 6.117 min
 Delta R.T.: 0.000 min
 Response: 11346995
 Conc: 144.93 ng/ml

Instrument :
 ECD_P
 ClientSampleId :
 AR1242ICC250



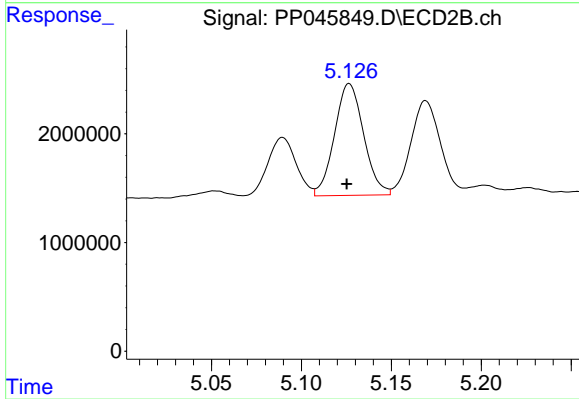
#25 AR-1248-5

R.T.: 5.169 min
 Delta R.T.: 0.000 min
 Response: 9789007
 Conc: 166.78 ng/ml



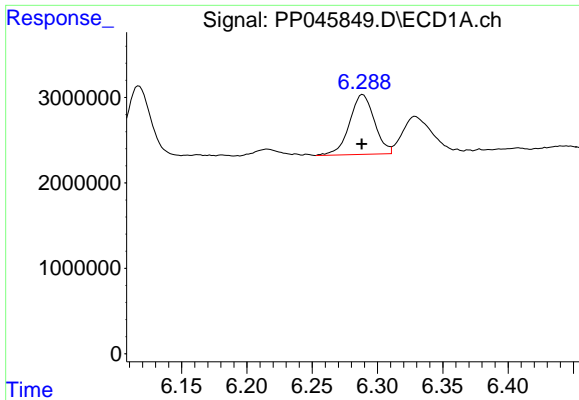
#26 AR-1254-1

R.T.: 6.046 min
 Delta R.T.: -0.004 min
 Response: 7930773
 Conc: 95.96 ng/ml



#26 AR-1254-1

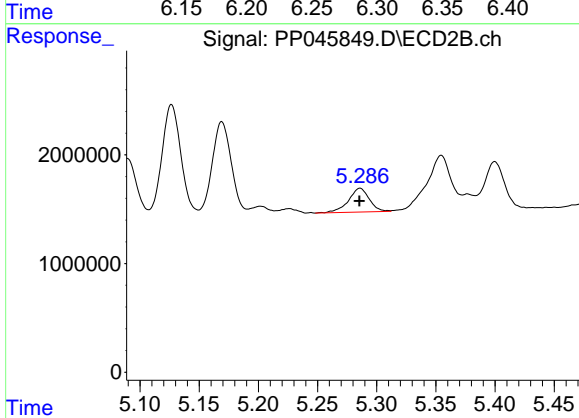
R.T.: 5.127 min
 Delta R.T.: 0.002 min
 Response: 11606061
 Conc: 131.58 ng/ml



#27 AR-1254-2

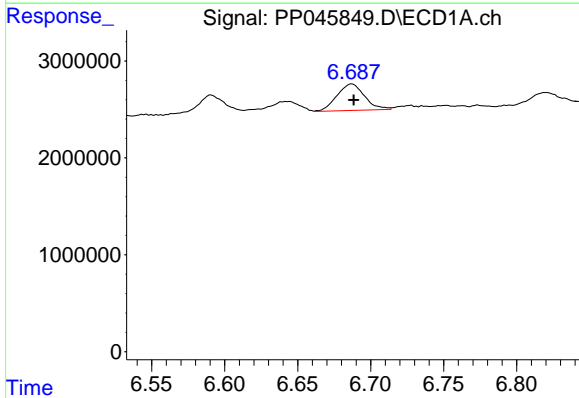
R.T.: 6.289 min
 Delta R.T.: 0.000 min
 Response: 9262870
 Conc: 75.22 ng/ml

Instrument :
 ECD_P
 ClientSampleId :
 AR1242ICC250



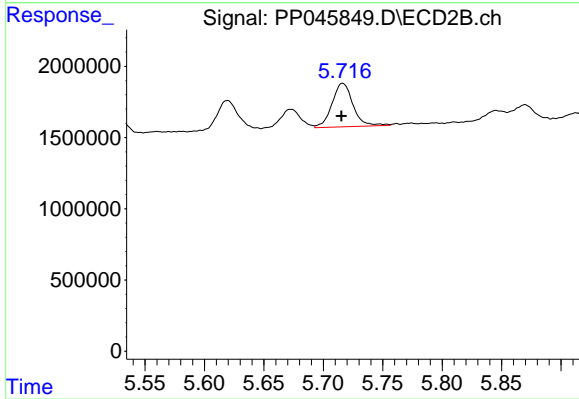
#27 AR-1254-2

R.T.: 5.286 min
 Delta R.T.: 0.000 min
 Response: 2705215
 Conc: 35.84 ng/ml



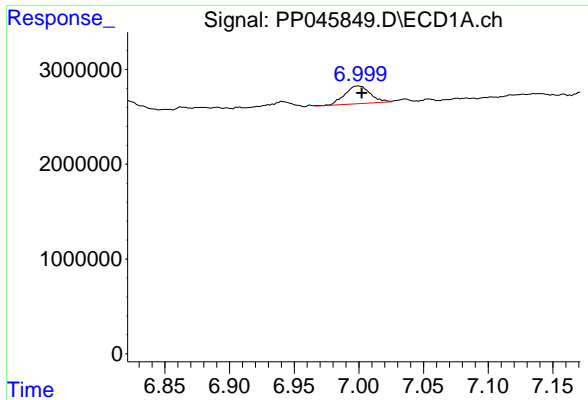
#28 AR-1254-3

R.T.: 6.687 min
 Delta R.T.: -0.001 min
 Response: 3576788
 Conc: 29.76 ng/ml



#28 AR-1254-3

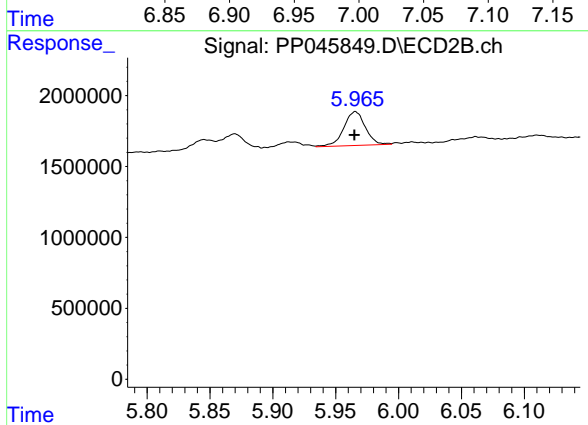
R.T.: 5.716 min
 Delta R.T.: 0.000 min
 Response: 3748508
 Conc: 31.87 ng/ml



#29 AR-1254-4

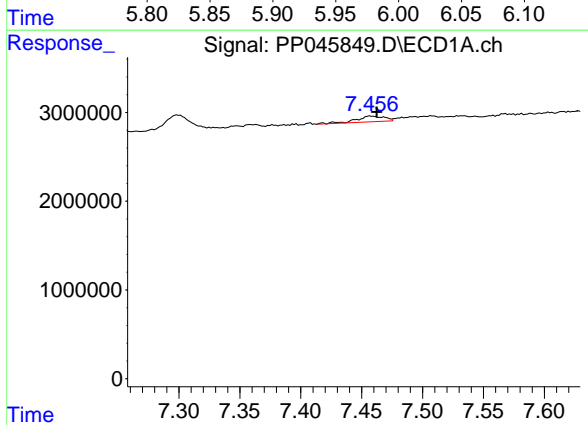
R.T.: 7.000 min
 Delta R.T.: -0.003 min
 Response: 2542409
 Conc: 28.83 ng/ml

Instrument :
 ECD_P
 ClientSampleId :
 AR1242ICC250



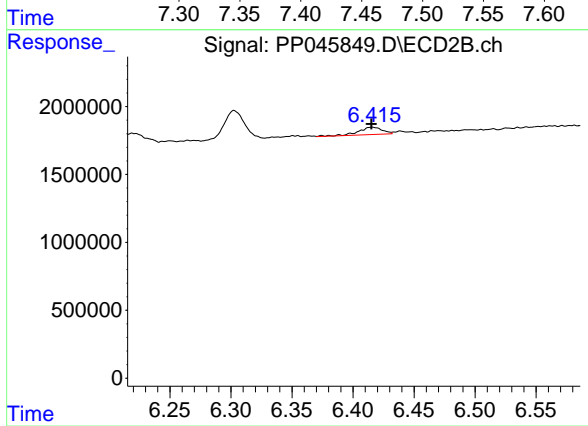
#29 AR-1254-4

R.T.: 5.966 min
 Delta R.T.: 0.000 min
 Response: 2861941
 Conc: 37.92 ng/ml



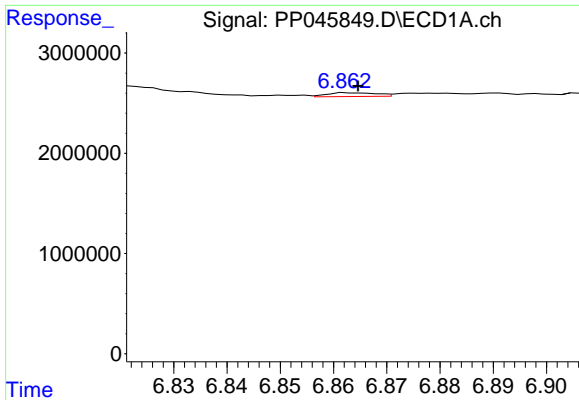
#30 AR-1254-5

R.T.: 7.457 min
 Delta R.T.: -0.005 min
 Response: 1054980
 Conc: 11.26 ng/ml



#30 AR-1254-5

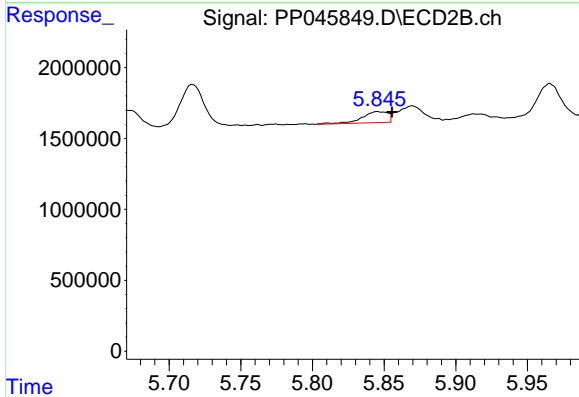
R.T.: 6.416 min
 Delta R.T.: 0.000 min
 Response: 757523
 Conc: 7.39 ng/ml



#31 AR-1260-1

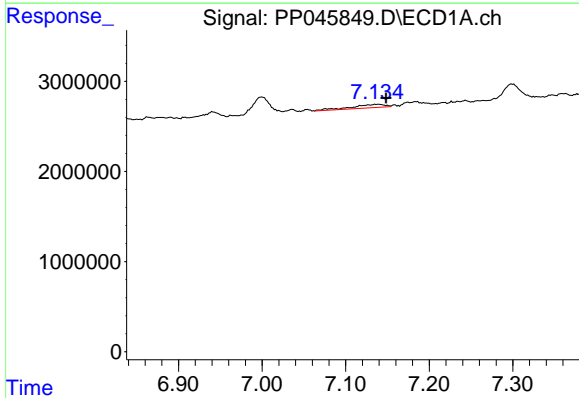
R.T.: 6.863 min
 Delta R.T.: -0.002 min
 Response: 239727
 Conc: 2.72 ng/ml

Instrument :
 ECD_P
 ClientSampleId :
 AR1242ICC250



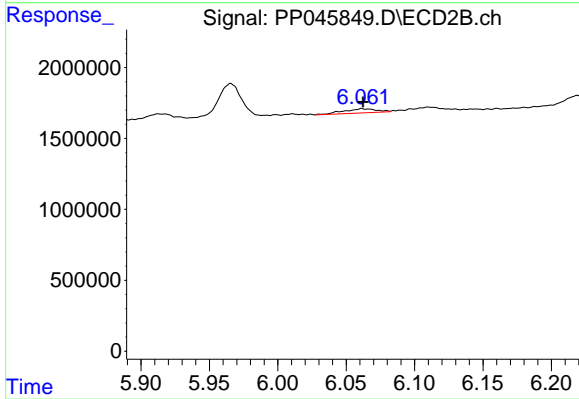
#31 AR-1260-1

R.T.: 5.845 min
 Delta R.T.: -0.010 min
 Response: 991005
 Conc: 12.52 ng/ml



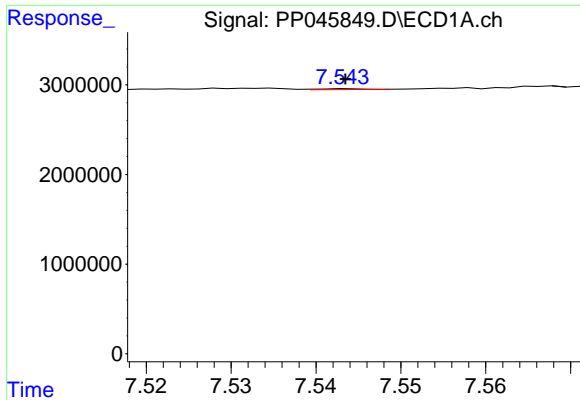
#32 AR-1260-2

R.T.: 7.139 min
 Delta R.T.: -0.009 min
 Response: 1062489
 Conc: 10.37 ng/ml



#32 AR-1260-2

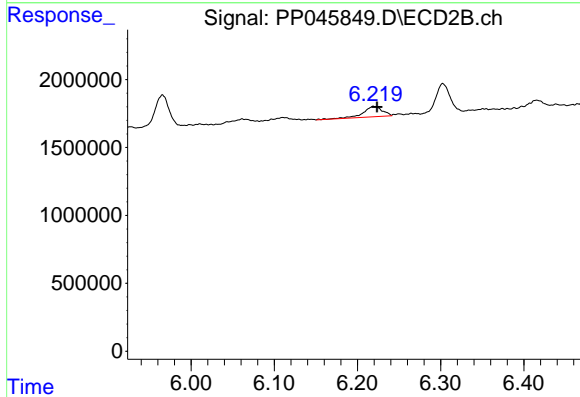
R.T.: 6.062 min
 Delta R.T.: 0.000 min
 Response: 478558
 Conc: 5.11 ng/ml



#33 AR-1260-3

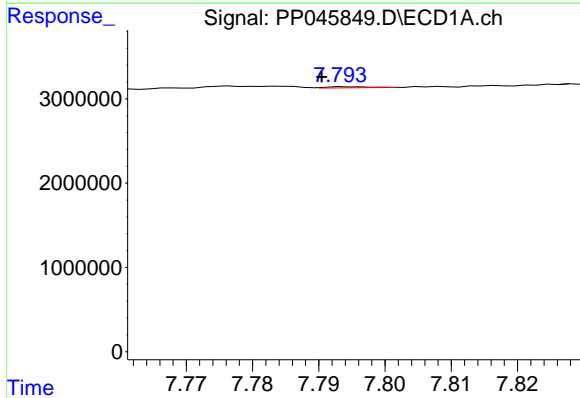
R.T.: 7.543 min
 Delta R.T.: 0.000 min
 Response: 38053
 Conc: 0.46 ng/ml

Instrument :
 ECD_P
 ClientSampleId :
 AR1242ICC250



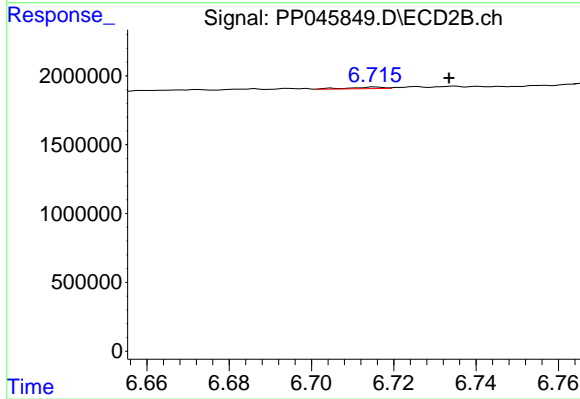
#33 AR-1260-3

R.T.: 6.220 min
 Delta R.T.: -0.004 min
 Response: 1229360
 Conc: 13.88 ng/ml



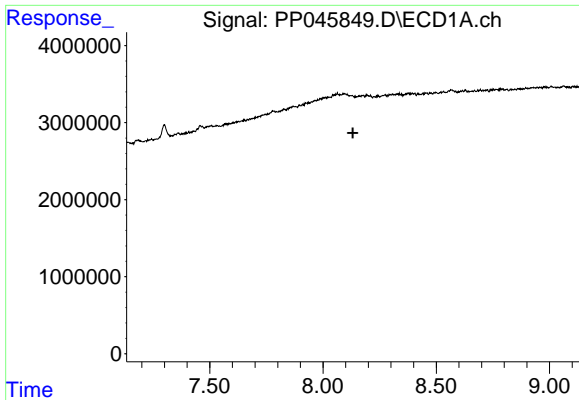
#34 AR-1260-4

R.T.: 7.794 min
 Delta R.T.: 0.004 min
 Response: 57114
 Conc: 0.67 ng/ml



#34 AR-1260-4

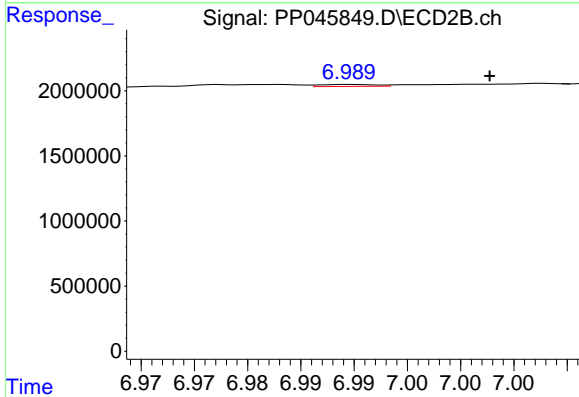
R.T.: 6.716 min
 Delta R.T.: -0.018 min
 Response: 70387
 Conc: 0.98 ng/ml



#35 AR-1260-5

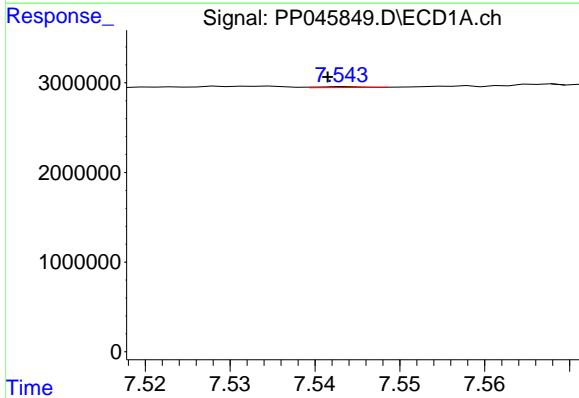
R.T.: 8.129 min
 Delta R.T.: -0.002 min
 Response: -20668
 Conc: N.D.

Instrument :
 ECD_P
 ClientSampleId :
 AR1242ICC250



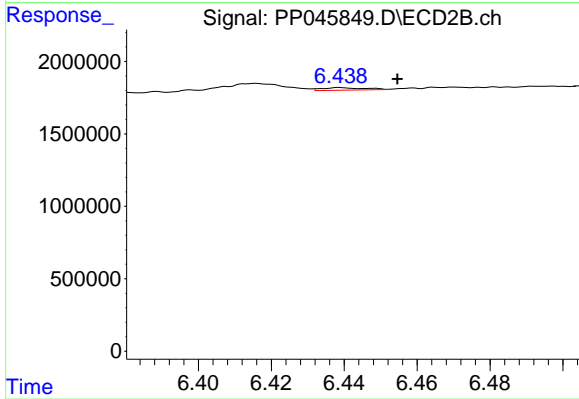
#35 AR-1260-5

R.T.: 6.990 min
 Delta R.T.: -0.013 min
 Response: 52564
 Conc: 0.31 ng/ml



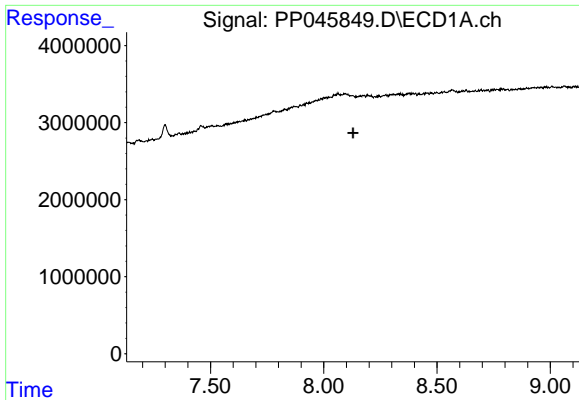
#36 AR-1262-1

R.T.: 7.543 min
 Delta R.T.: 0.002 min
 Response: 38053
 Conc: 0.33 ng/ml



#36 AR-1262-1

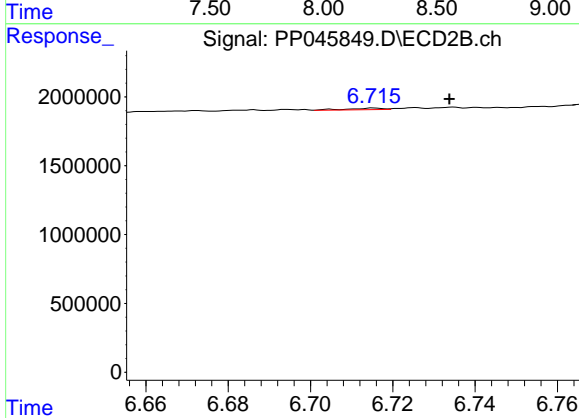
R.T.: 6.439 min
 Delta R.T.: -0.016 min
 Response: 139507
 Conc: 1.32 ng/ml



#37 AR-1262-2

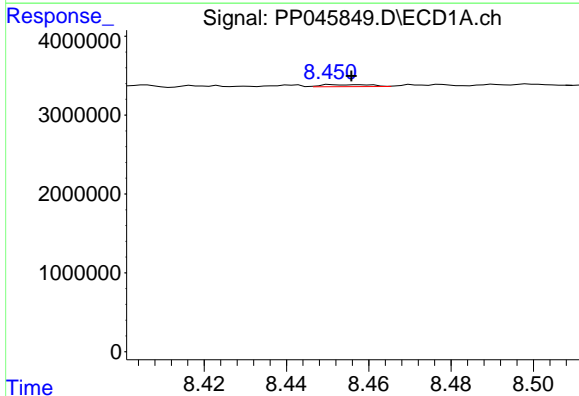
R.T.: 8.129 min
 Delta R.T.: 0.000 min
 Response: -20668
 Conc: N.D.

Instrument :
 ECD_P
 ClientSampleId :
 AR1242ICC250



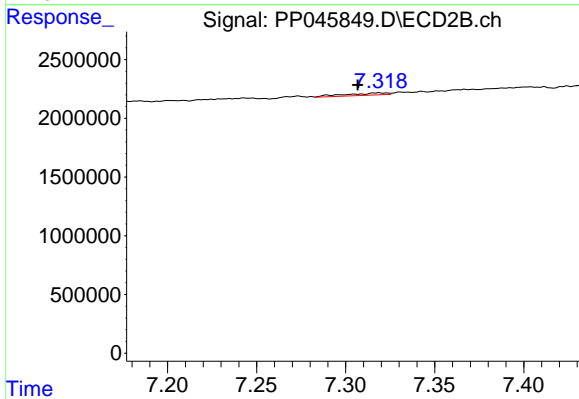
#37 AR-1262-2

R.T.: 6.716 min
 Delta R.T.: -0.018 min
 Response: 70387
 Conc: 0.75 ng/ml



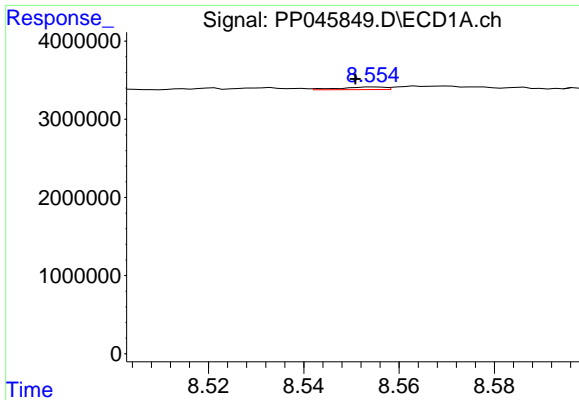
#38 AR-1262-3

R.T.: 8.451 min
 Delta R.T.: -0.005 min
 Response: 218656
 Conc: 1.68 ng/ml



#38 AR-1262-3

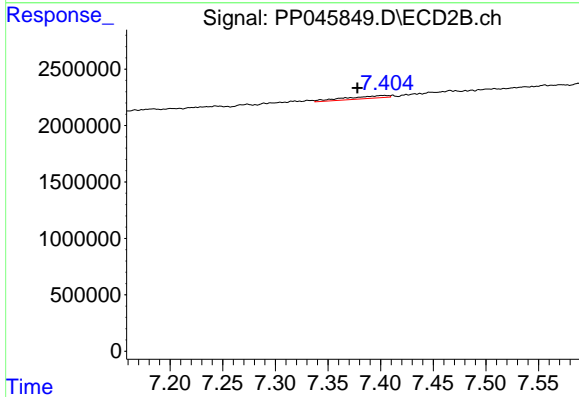
R.T.: 7.318 min
 Delta R.T.: 0.012 min
 Response: 324948
 Conc: 4.24 ng/ml



#39 AR-1262-4

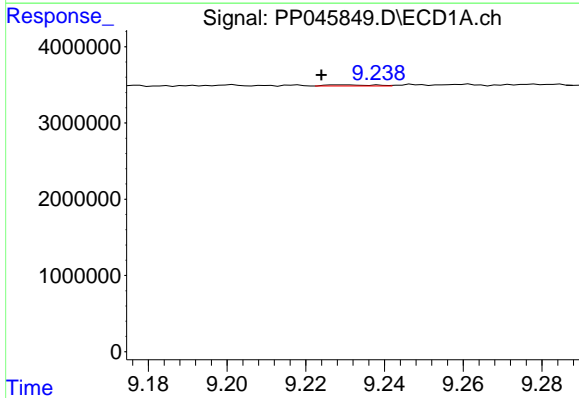
R.T.: 8.555 min
 Delta R.T.: 0.004 min
 Response: 208540
 Conc: 3.31 ng/ml

Instrument :
 ECD_P
 ClientSampleId :
 AR1242ICC250



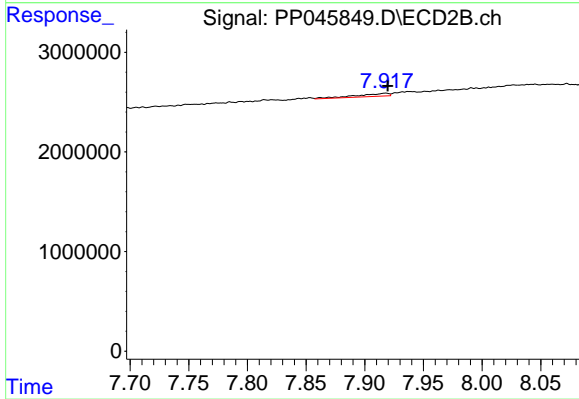
#39 AR-1262-4

R.T.: 7.403 min
 Delta R.T.: 0.025 min
 Response: 648988
 Conc: 4.56 ng/ml



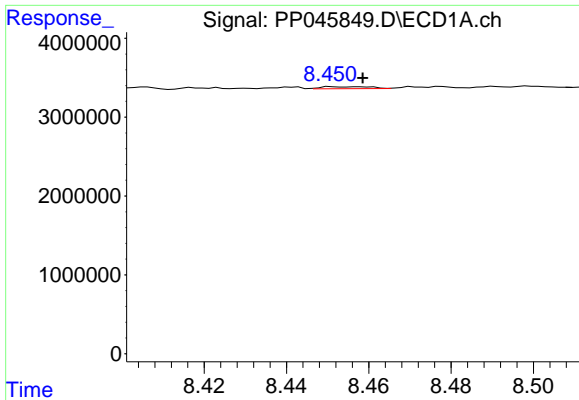
#40 AR-1262-5

R.T.: 9.229 min
 Delta R.T.: 0.005 min
 Response: 119165
 Conc: 1.75 ng/ml



#40 AR-1262-5

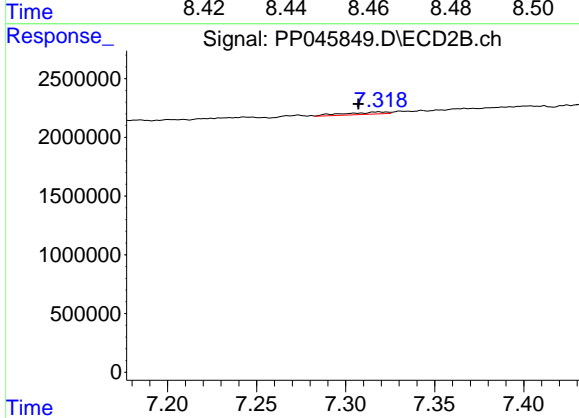
R.T.: 7.918 min
 Delta R.T.: -0.002 min
 Response: 561129
 Conc: 8.01 ng/ml



#41 AR-1268-1

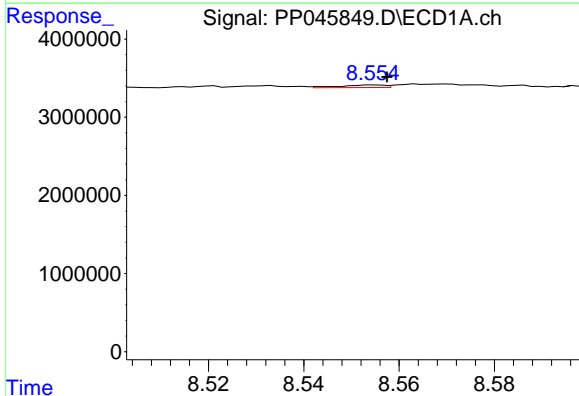
R.T.: 8.451 min
 Delta R.T.: -0.007 min
 Response: 218656
 Conc: 0.80 ng/ml

Instrument :
 ECD_P
 ClientSampleId :
 AR1242ICC250



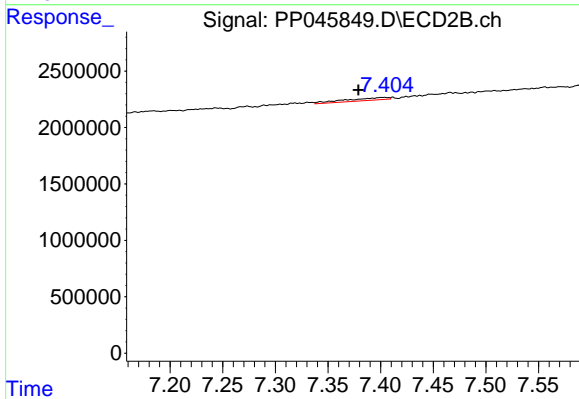
#41 AR-1268-1

R.T.: 7.318 min
 Delta R.T.: 0.011 min
 Response: 324948
 Conc: 1.46 ng/ml



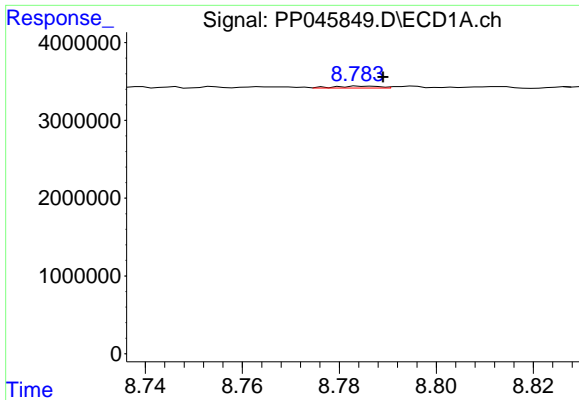
#42 AR-1268-2

R.T.: 8.555 min
 Delta R.T.: -0.002 min
 Response: 208540
 Conc: 0.82 ng/ml



#42 AR-1268-2

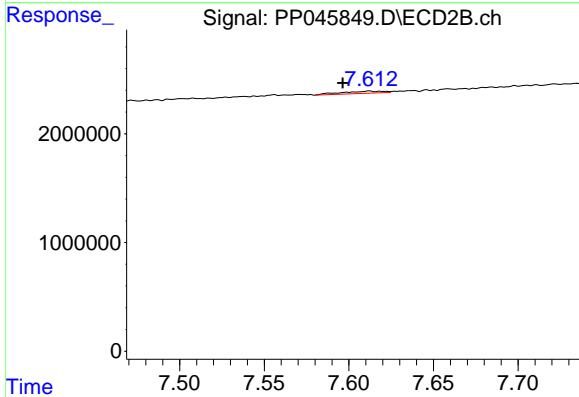
R.T.: 7.403 min
 Delta R.T.: 0.025 min
 Response: 648988
 Conc: 3.20 ng/ml



#43 AR-1268-3

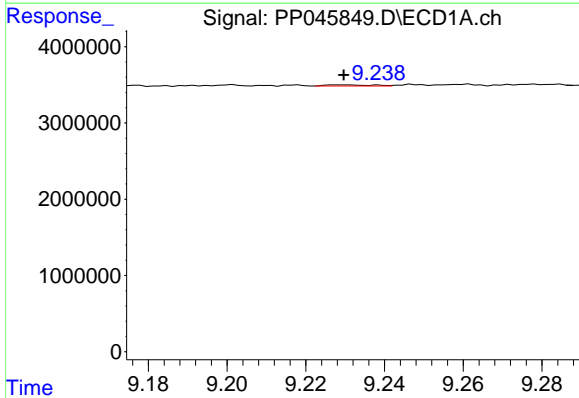
R.T.: 8.785 min
 Delta R.T.: -0.004 min
 Response: 159103
 Conc: 0.70 ng/ml

Instrument :
 ECD_P
 ClientSampleId :
 AR1242ICC250



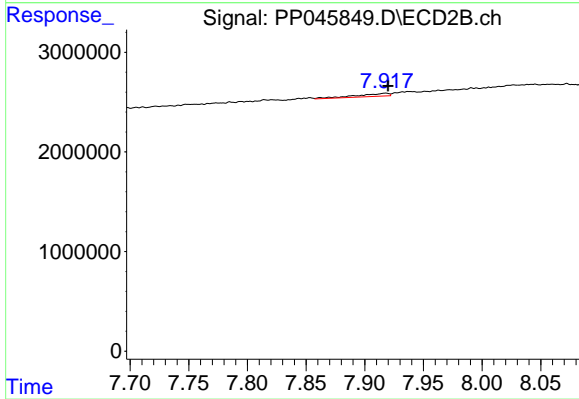
#43 AR-1268-3

R.T.: 7.612 min
 Delta R.T.: 0.016 min
 Response: 350723
 Conc: 2.06 ng/ml



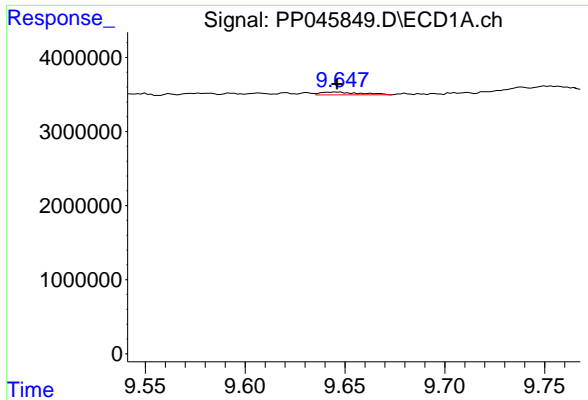
#44 AR-1268-4

R.T.: 9.229 min
 Delta R.T.: 0.000 min
 Response: 119165
 Conc: 1.32 ng/ml



#44 AR-1268-4

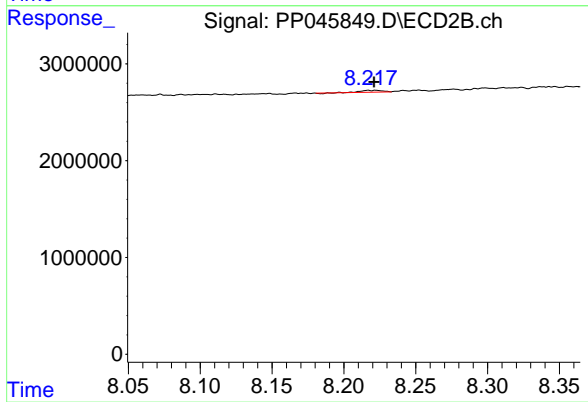
R.T.: 7.918 min
 Delta R.T.: -0.002 min
 Response: 561129
 Conc: 7.11 ng/ml



#45 AR-1268-5

R.T.: 9.646 min
Delta R.T.: 0.000 min
Response: 547290
Conc: 0.80 ng/ml

Instrument :
ECD_P
ClientSampleId :
AR1242ICC250



#45 AR-1268-5

R.T.: 8.217 min
Delta R.T.: -0.004 min
Response: 163514
Conc: 0.30 ng/ml