

Data Path : Z:\pestpcbsrv\HPCHEM1\ECD\_P\Data\PP041222\  
 Data File : PP045851.D  
 Signal(s) : Signal #1: ECD1A.ch Signal #2: ECD2B.ch  
 Acq On : 11 Apr 2022 22:56  
 Operator : YP\AJ  
 Sample : AR1248ICC1000  
 Misc :  
 ALS Vial : 15 Sample Multiplier: 1

Instrument :  
 ECD\_P  
 ClientSampleId :

Integration File signal 1: autoint1.e  
 Integration File signal 2: autoint2.e  
 Quant Time: Apr 12 06:53:56 2022  
 Quant Method : Z:\pestpcbsrv\HPCHEM1\ECD\_P\methods\PP041222.M  
 Quant Title : GC EXTRACTABLES  
 QLast Update : Tue Apr 12 05:31:12 2022  
 Response via : Initial Calibration  
 Integrator: ChemStation

Volume Inj. : 2 µl  
 Signal #1 Phase : ZB-MR1 Signal #2 Phase: ZB-MR2  
 Signal #1 Info : 30Mx0.32mmx 0.50µ Signal #2 Info : 30M x 0.32mm x 0.25µm

Compound	RT#1	RT#2	Resp#1	Resp#2	ng/ml	ng/ml
-----						
System Monitoring Compounds						
1) SA Tetrachlo...	3.875	3.138	253.5E6	167.7E6	103.055	105.543
2) SA Decachlor...	9.976	8.477	148.7E6	144.2E6	90.579	101.186
Target Compounds						
3) L1 AR-1016-1	5.124	4.276	41765055	32772165	544.738	558.044
4) L1 AR-1016-2	5.147	4.294	52321700	34339925	452.464	411.035
5) L1 AR-1016-3	5.213	4.479	25005698	22594299	362.930	511.487 #
6) L1 AR-1016-4	5.318	4.527	28945120	44709810	491.892	1252.912 #
7) L1 AR-1016-5	5.638	4.751	66395541	55819958	1204.013	1175.016
8) L2 AR-1221-1	4.102	3.362	764629	616974	29.351	30.371
9) L2 AR-1221-2	4.197	3.450	3247350	2663735	170.755	175.254
10) L2 AR-1221-3	4.273	3.531	3672324	2876634	59.742	62.332
11) L3 AR-1232-1	4.273	3.531	3672324	2876634	64.707	67.802
12) L3 AR-1232-2	4.835	4.294	19053173	34339925	714.485	856.793
13) L3 AR-1232-3	5.147	4.479	52321700	22594299	972.013	1051.505
14) L3 AR-1232-4	5.318	4.570	28945120	46777131	1094.192	2469.002 #
15) L3 AR-1232-5	5.420	4.751	56371786	55819958	3058.176	2610.344
16) L4 AR-1242-1	5.124	4.276	41765055	32772165	698.830	708.317
17) L4 AR-1242-2	5.147	4.294	52321700	34339925	582.850	529.566
18) L4 AR-1242-3	5.213	4.479	25005698	22594299	450.766	652.963 #
19) L4 AR-1242-4	5.318	4.570	28945120	46777131	637.824	1391.618 #
20) L4 AR-1242-5	6.117	5.126	71285411	79192709	1534.737	1803.184
21) L5 AR-1248-1	5.124	4.276	41765055	32772165	968.162	955.644
22) L5 AR-1248-2	5.420	4.527	56371786	44709810	942.960	954.382
23) L5 AR-1248-3	5.638	4.570	66395541	46777131	949.158	957.007
24) L5 AR-1248-4	6.077	4.751	71756374	55819958	907.578	960.732
25) L5 AR-1248-5	6.117	5.169	71285411	56382285	910.493	960.596
26) L6 AR-1254-1	6.046	5.126	56211192	79192709	680.120	897.789 #
27) L6 AR-1254-2	6.288	5.286	69499255	22287881	564.366	295.313 #
28) L6 AR-1254-3	6.686	5.715	36655068	35652091	304.935	303.137
29) L6 AR-1254-4	6.999	5.965	25051646	24597664	284.045	325.948
30) L6 AR-1254-5	7.459	6.415	6103080	6065456	65.150	59.203
31) L7 AR-1260-1	6.866	5.869	4194843	18374064	47.521	232.150 #
32) L7 AR-1260-2	7.148	6.062	2446842	3063753	23.884	32.729 #
33) L7 AR-1260-3	7.527f	6.222	1229433	3952285	14.923	44.617 #
34) L7 AR-1260-4	7.775f	6.733	2685197	466163	31.688	6.492 #
35) L7 AR-1260-5	8.131	7.003	573569	1178032	3.492	6.935 #
36) L8 AR-1262-1	7.527	6.441	1229433	1052397	10.685	9.950
37) L8 AR-1262-2	8.131	6.733	573569	466163	3.202	4.951 #
38) L8 AR-1262-3	8.444	7.305	282060	584344	2.165	7.632 #
39) L8 AR-1262-4	8.557	7.377	922197	1024908	14.642	7.204 #
40) L8 AR-1262-5	9.222	7.921	302181	795155	4.426	11.351 #
41) L9 AR-1268-1	8.444	7.305	282060	584344	1.037	2.634 #

Data Path : Z:\pestpcbsrv\HPCHEM1\ECD\_P\Data\PP041222\  
 Data File : PP045851.D  
 Signal(s) : Signal #1: ECD1A.ch Signal #2: ECD2B.ch  
 Acq On : 11 Apr 2022 22:56  
 Operator : YP\AJ  
 Sample : AR1248ICC1000  
 Misc :  
 ALS Vial : 15 Sample Multiplier: 1

Instrument :  
 ECD\_P  
 ClientSampleId :

Integration File signal 1: autoint1.e  
 Integration File signal 2: autoint2.e  
 Quant Time: Apr 12 06:53:56 2022  
 Quant Method : Z:\pestpcbsrv\HPCHEM1\ECD\_P\methods\PP041222.M  
 Quant Title : GC EXTRACTABLES  
 QLast Update : Tue Apr 12 05:31:12 2022  
 Response via : Initial Calibration  
 Integrator: ChemStation

Volume Inj. : 2 µl  
 Signal #1 Phase : ZB-MR1 Signal #2 Phase: ZB-MR2  
 Signal #1 Info : 30Mx0.32mmx 0.50µ Signal #2 Info : 30M x 0.32mm x 0.25µm

	Compound	RT#1	RT#2	Resp#1	Resp#2	ng/ml	ng/ml
42)	L9 AR-1268-2	8.557	7.377	922197	1024908	3.645	5.058 #
43)	L9 AR-1268-3	8.786	7.596	473963	346247	2.086	2.033
44)	L9 AR-1268-4	9.222	7.921	302181	795155	3.348	10.075 #
45)	L9 AR-1268-5	9.641	8.219	1816982	1020060	2.672	1.840 #

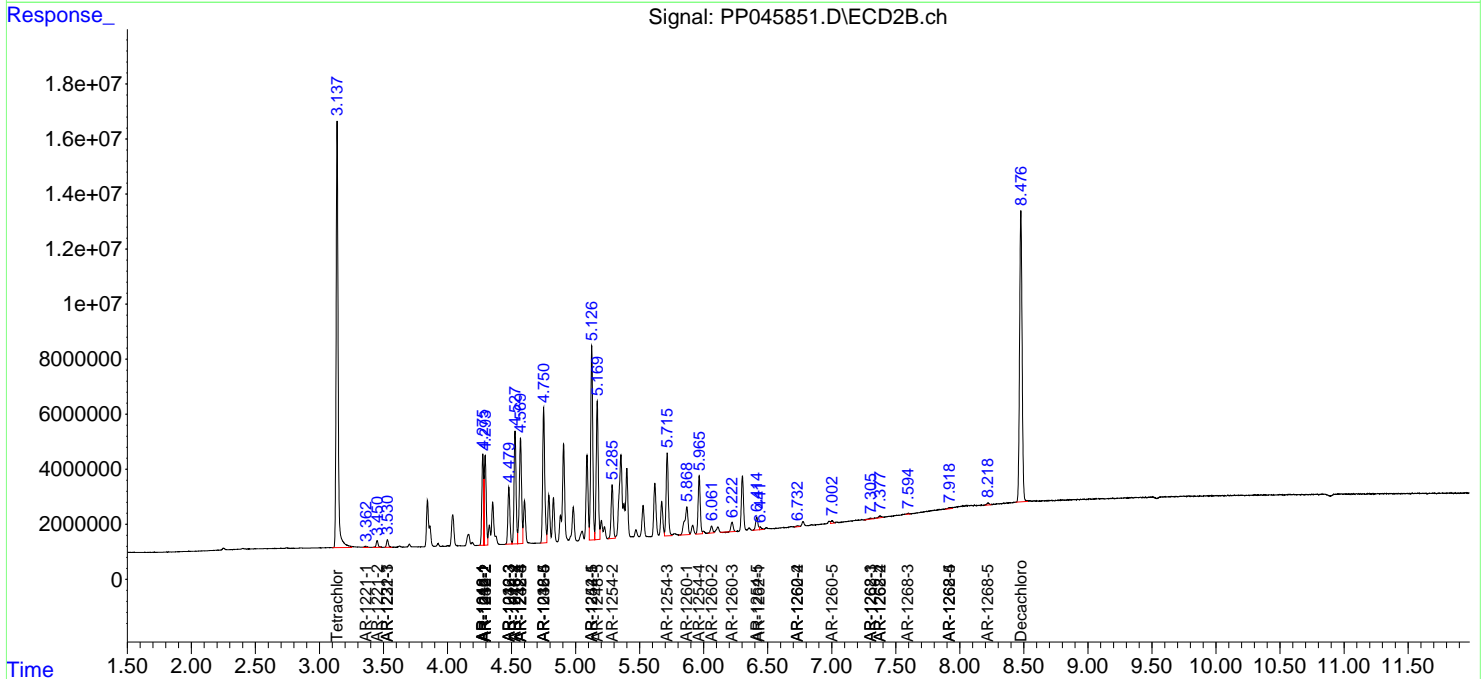
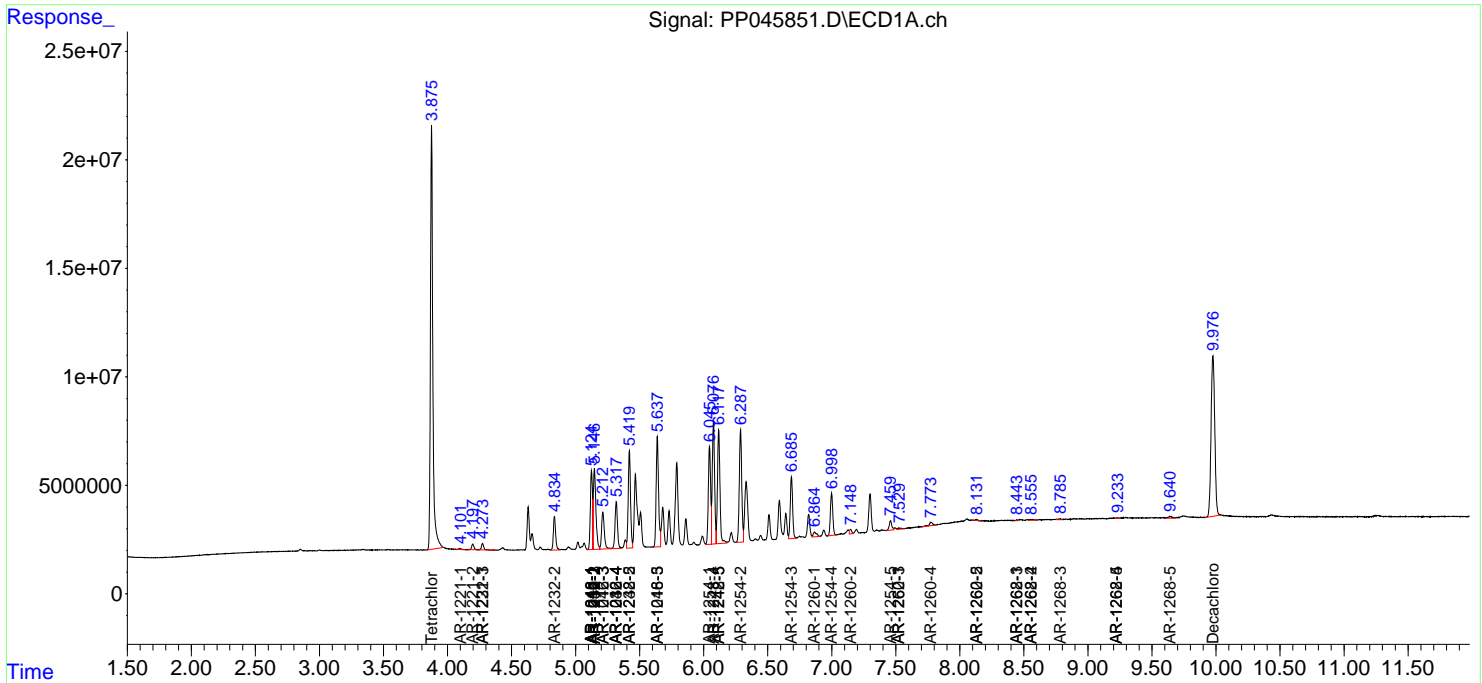
(f)=RT Delta > 1/2 Window (#)=Amounts differ by > 25% (m)=manual int.

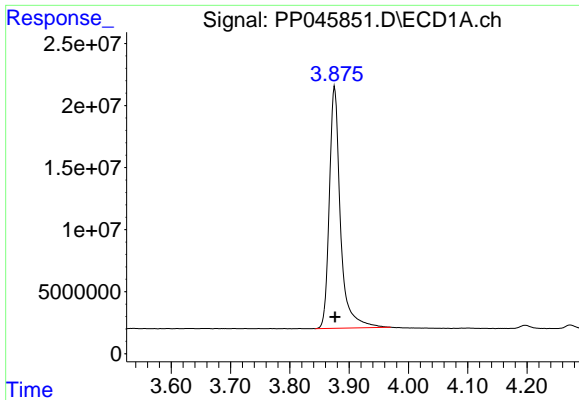
Data Path : Z:\pestpcbsrv\HPCHEM1\ECD\_P\Data\PP041222\  
 Data File : PP045851.D  
 Signal(s) : Signal #1: ECD1A.ch Signal #2: ECD2B.ch  
 Acq On : 11 Apr 2022 22:56  
 Operator : YP\AJ  
 Sample : AR1248ICC1000  
 Misc :  
 ALS Vial : 15 Sample Multiplier: 1

Instrument :  
 ECD\_P  
 ClientSampleId :

Integration File signal 1: autoint1.e  
 Integration File signal 2: autoint2.e  
 Quant Time: Apr 12 06:53:56 2022  
 Quant Method : Z:\pestpcbsrv\HPCHEM1\ECD\_P\methods\PP041222.M  
 Quant Title : GC EXTRACTABLES  
 QLast Update : Tue Apr 12 05:31:12 2022  
 Response via : Initial Calibration  
 Integrator: ChemStation

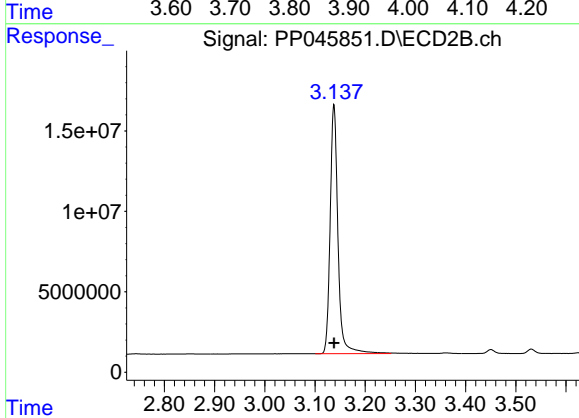
Volume Inj. : 2 µl  
 Signal #1 Phase : ZB-MR1 Signal #2 Phase: ZB-MR2  
 Signal #1 Info : 30Mx0.32mmx 0.50µ Signal #2 Info : 30M x 0.32mm x 0.25µm



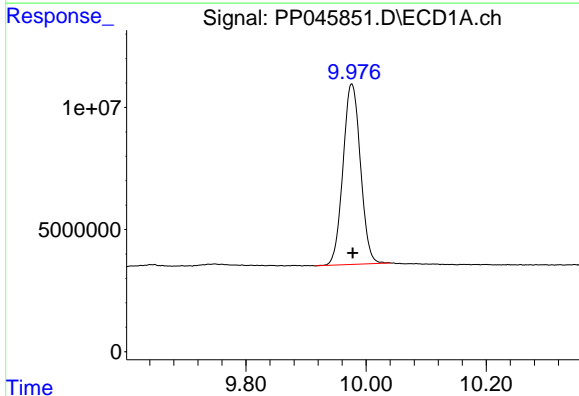


#1 Tetrachloro-m-xylene  
 R.T.: 3.875 min  
 Delta R.T.: 0.000 min  
 Response: 253483266  
 Conc: 103.05 ng/ml

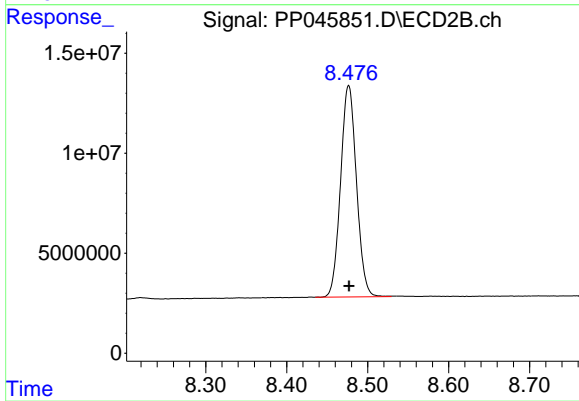
Instrument :  
 ECD\_P  
 ClientSampleId :



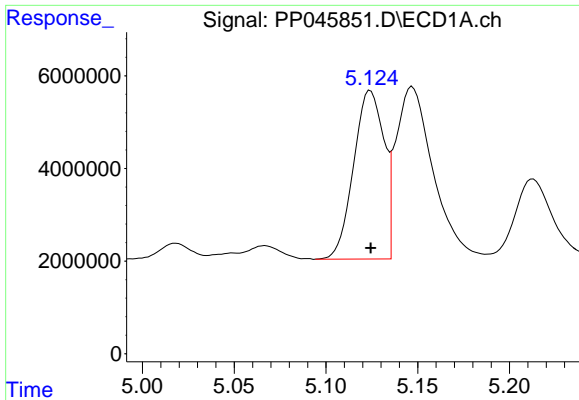
#1 Tetrachloro-m-xylene  
 R.T.: 3.138 min  
 Delta R.T.: 0.000 min  
 Response: 167704766  
 Conc: 105.54 ng/ml



#2 Decachlorobiphenyl  
 R.T.: 9.976 min  
 Delta R.T.: -0.001 min  
 Response: 148692106  
 Conc: 90.58 ng/ml



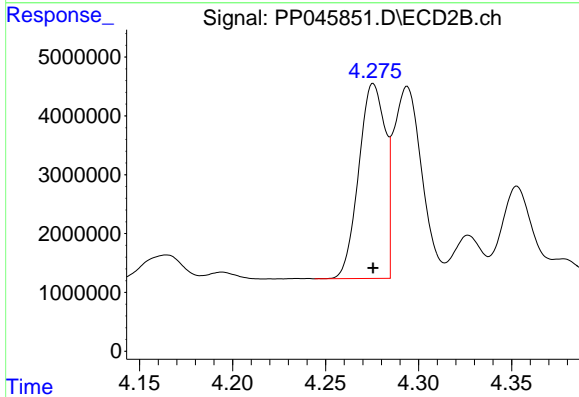
#2 Decachlorobiphenyl  
 R.T.: 8.477 min  
 Delta R.T.: 0.000 min  
 Response: 144222907  
 Conc: 101.19 ng/ml



#3 AR-1016-1

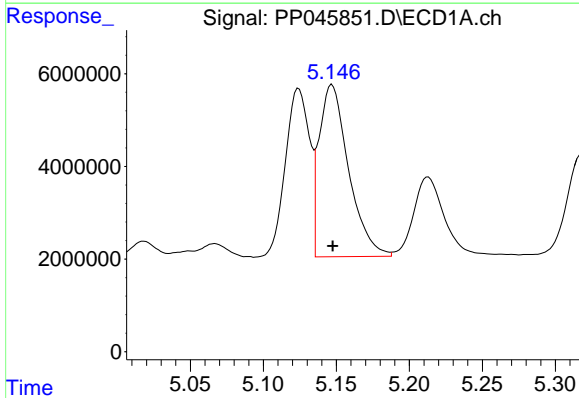
R.T.: 5.124 min  
 Delta R.T.: 0.000 min  
 Response: 41765055  
 Conc: 544.74 ng/ml

Instrument :  
 ECD\_P  
 ClientSampleId :



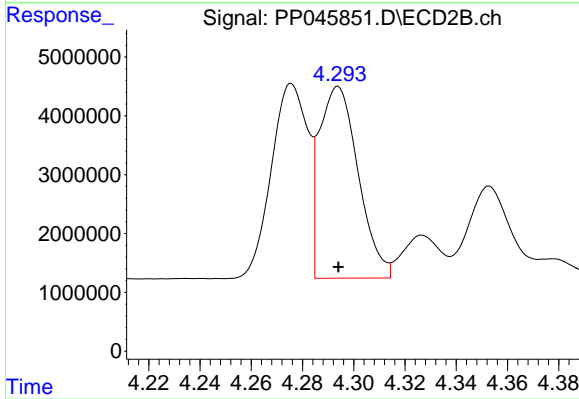
#3 AR-1016-1

R.T.: 4.276 min  
 Delta R.T.: 0.000 min  
 Response: 32772165  
 Conc: 558.04 ng/ml



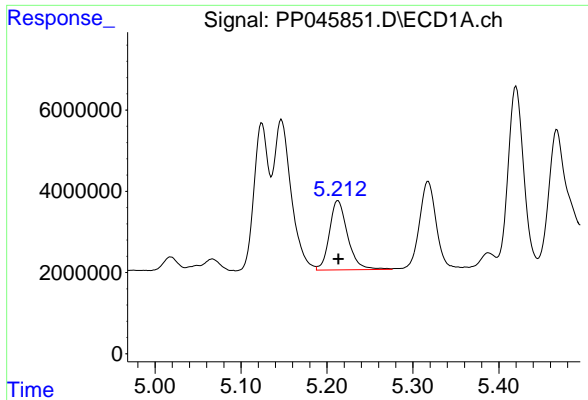
#4 AR-1016-2

R.T.: 5.147 min  
 Delta R.T.: 0.000 min  
 Response: 52321700  
 Conc: 452.46 ng/ml



#4 AR-1016-2

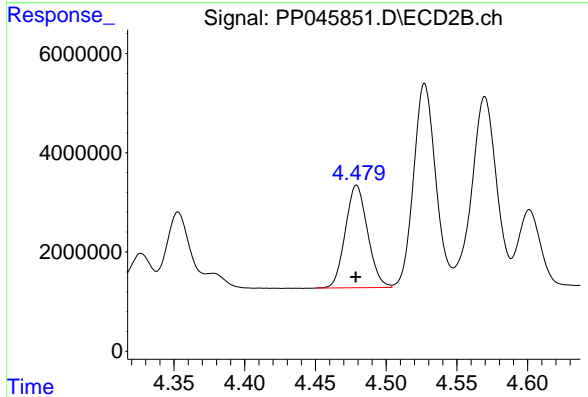
R.T.: 4.294 min  
 Delta R.T.: 0.000 min  
 Response: 34339925  
 Conc: 411.04 ng/ml



#5 AR-1016-3

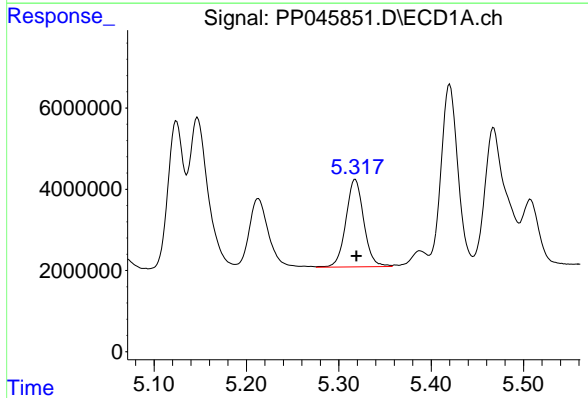
R.T.: 5.213 min  
 Delta R.T.: 0.000 min  
 Response: 25005698  
 Conc: 362.93 ng/ml

Instrument :  
 ECD\_P  
 ClientSampleId :



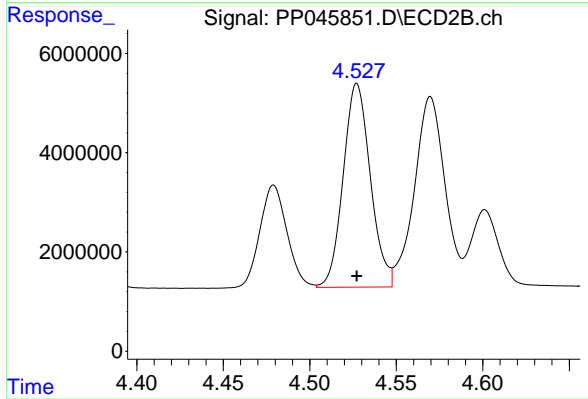
#5 AR-1016-3

R.T.: 4.479 min  
 Delta R.T.: 0.000 min  
 Response: 22594299  
 Conc: 511.49 ng/ml



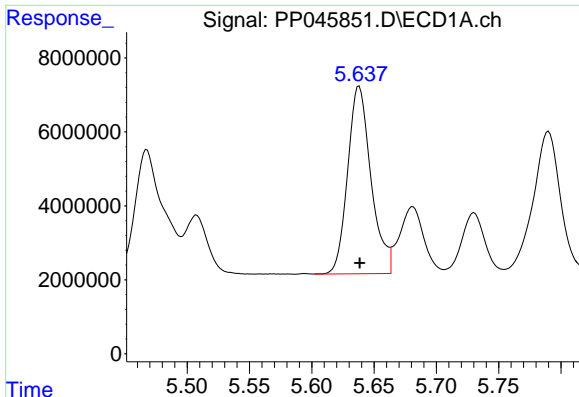
#6 AR-1016-4

R.T.: 5.318 min  
 Delta R.T.: -0.001 min  
 Response: 28945120  
 Conc: 491.89 ng/ml



#6 AR-1016-4

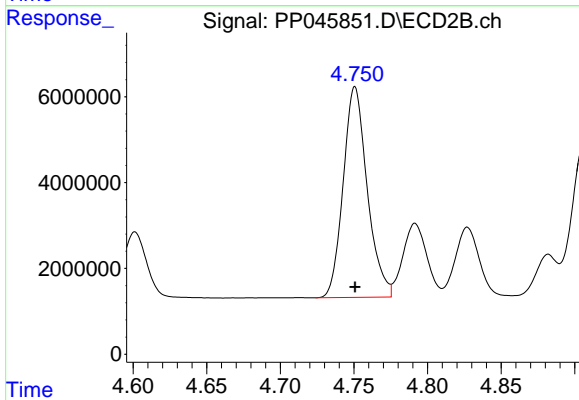
R.T.: 4.527 min  
 Delta R.T.: 0.000 min  
 Response: 44709810  
 Conc: 1252.91 ng/ml



#7 AR-1016-5

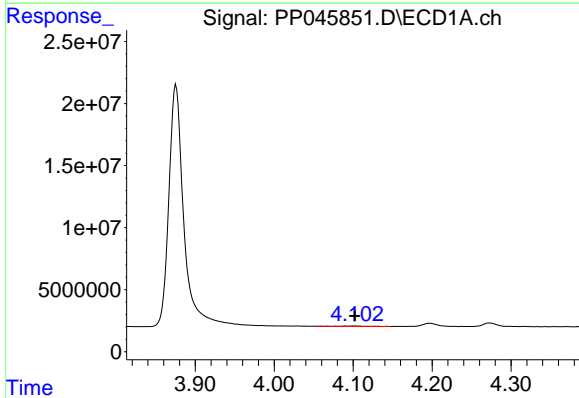
R.T.: 5.638 min  
 Delta R.T.: 0.000 min  
 Response: 66395541  
 Conc: 1204.01 ng/ml

Instrument :  
 ECD\_P  
 ClientSampleId :



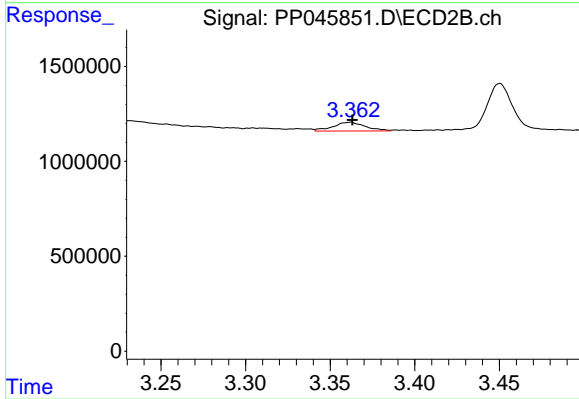
#7 AR-1016-5

R.T.: 4.751 min  
 Delta R.T.: 0.000 min  
 Response: 55819958  
 Conc: 1175.02 ng/ml



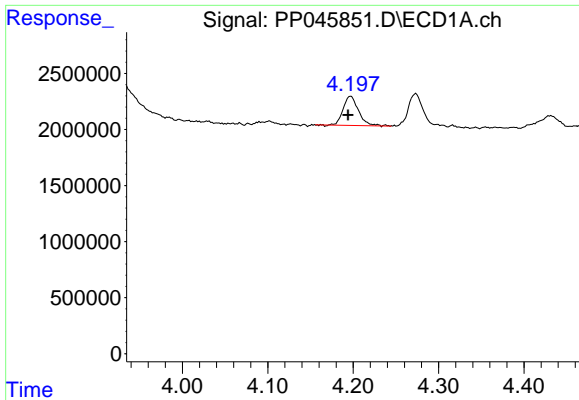
#8 AR-1221-1

R.T.: 4.102 min  
 Delta R.T.: 0.000 min  
 Response: 764629  
 Conc: 29.35 ng/ml



#8 AR-1221-1

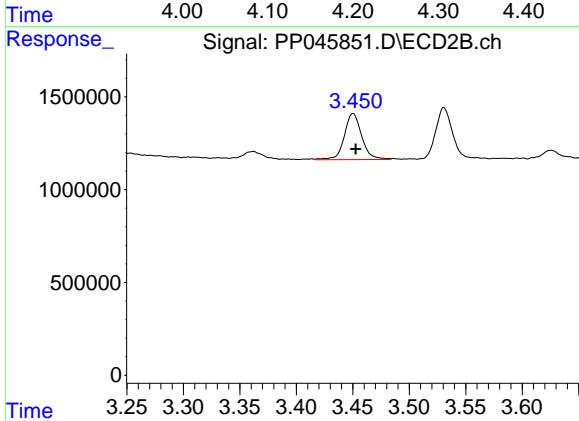
R.T.: 3.362 min  
 Delta R.T.: 0.000 min  
 Response: 616974  
 Conc: 30.37 ng/ml



#9 AR-1221-2

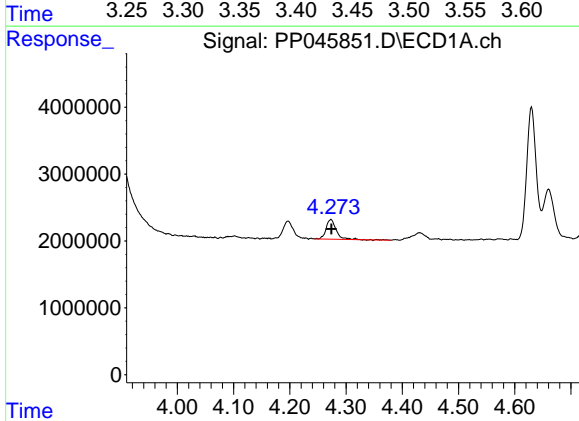
R.T.: 4.197 min  
 Delta R.T.: 0.003 min  
 Response: 3247350  
 Conc: 170.76 ng/ml

Instrument :  
 ECD\_P  
 ClientSampleId :



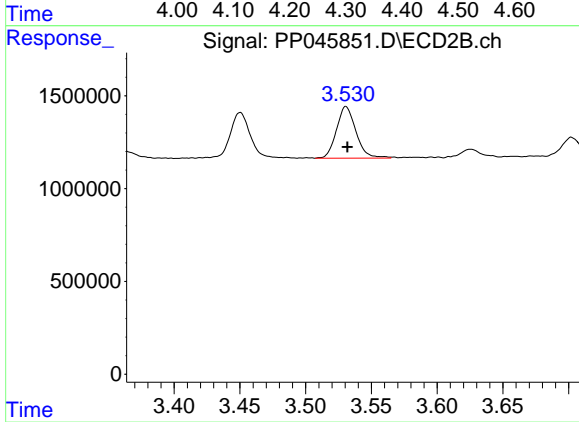
#9 AR-1221-2

R.T.: 3.450 min  
 Delta R.T.: -0.002 min  
 Response: 2663735  
 Conc: 175.25 ng/ml



#10 AR-1221-3

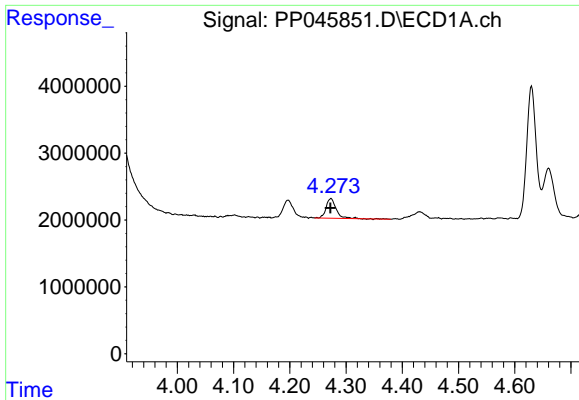
R.T.: 4.273 min  
 Delta R.T.: 0.000 min  
 Response: 3672324  
 Conc: 59.74 ng/ml



#10 AR-1221-3

R.T.: 3.531 min  
 Delta R.T.: 0.000 min  
 Response: 2876634  
 Conc: 62.33 ng/ml

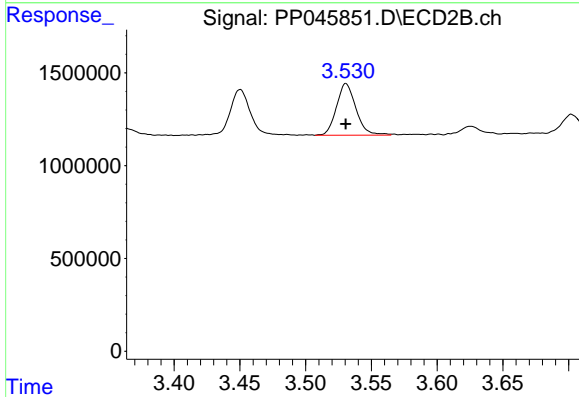




#11 AR-1232-1

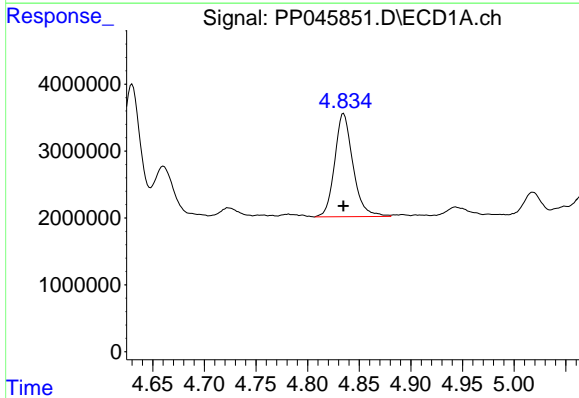
R.T.: 4.273 min  
 Delta R.T.: 0.000 min  
 Response: 3672324  
 Conc: 64.71 ng/ml

Instrument :  
 ECD\_P  
 ClientSampleId :



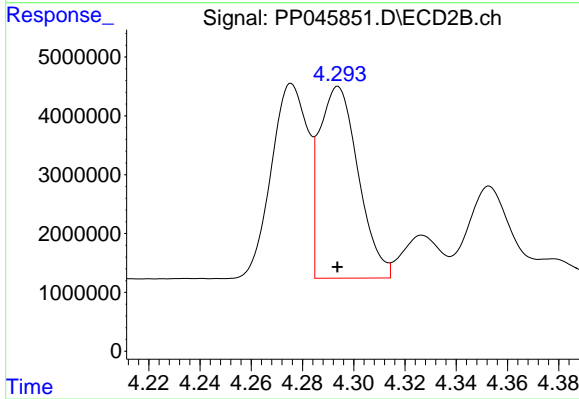
#11 AR-1232-1

R.T.: 3.531 min  
 Delta R.T.: 0.000 min  
 Response: 2876634  
 Conc: 67.80 ng/ml



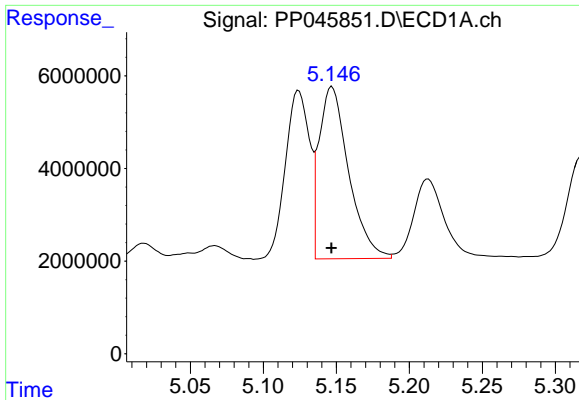
#12 AR-1232-2

R.T.: 4.835 min  
 Delta R.T.: 0.000 min  
 Response: 19053173  
 Conc: 714.48 ng/ml



#12 AR-1232-2

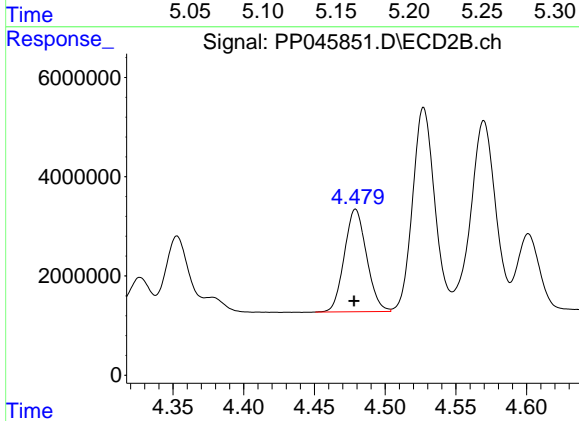
R.T.: 4.294 min  
 Delta R.T.: 0.000 min  
 Response: 34339925  
 Conc: 856.79 ng/ml



#13 AR-1232-3

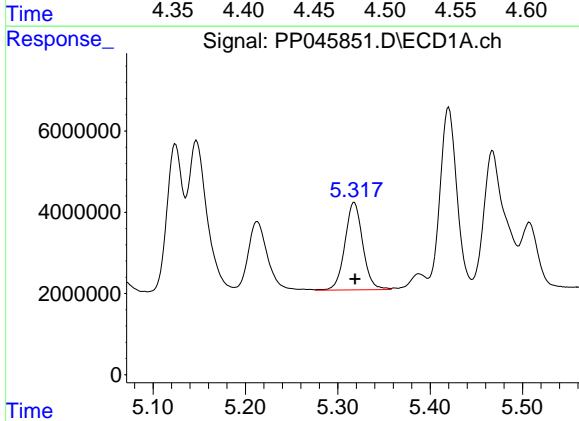
R.T.: 5.147 min  
 Delta R.T.: 0.000 min  
 Response: 52321700  
 Conc: 972.01 ng/ml

Instrument :  
 ECD\_P  
 ClientSampleId :



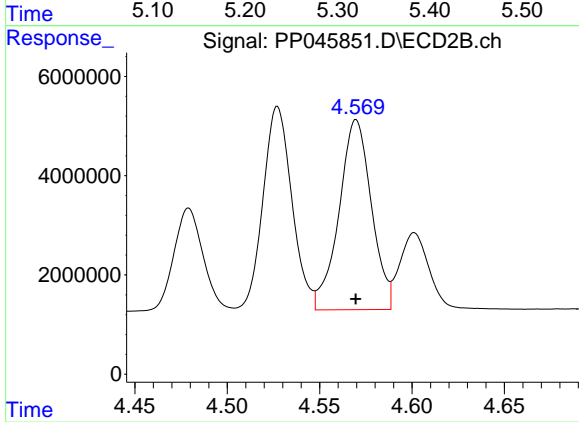
#13 AR-1232-3

R.T.: 4.479 min  
 Delta R.T.: 0.001 min  
 Response: 22594299  
 Conc: 1051.50 ng/ml



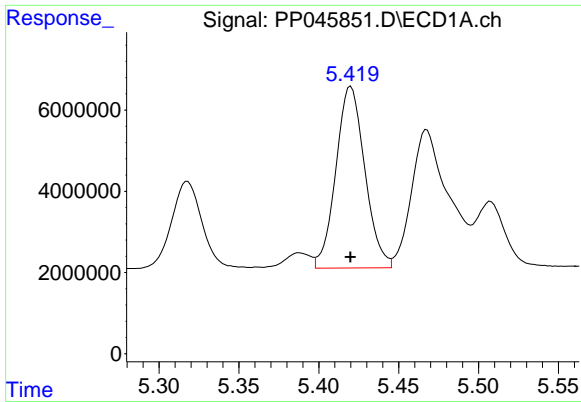
#14 AR-1232-4

R.T.: 5.318 min  
 Delta R.T.: 0.000 min  
 Response: 28945120  
 Conc: 1094.19 ng/ml



#14 AR-1232-4

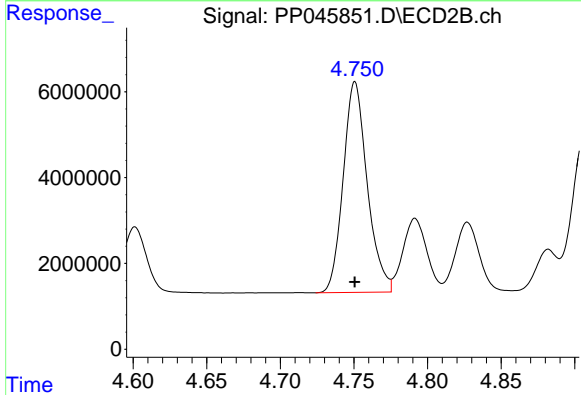
R.T.: 4.570 min  
 Delta R.T.: 0.000 min  
 Response: 46777131  
 Conc: 2469.00 ng/ml



#15 AR-1232-5

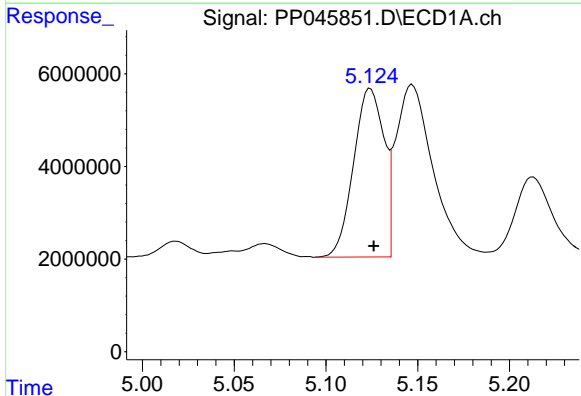
R.T.: 5.420 min  
 Delta R.T.: 0.000 min  
 Response: 56371786  
 Conc: 3058.18 ng/ml

Instrument :  
 ECD\_P  
 ClientSampleId :



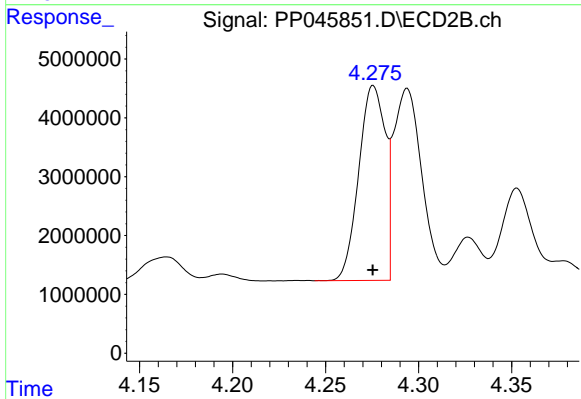
#15 AR-1232-5

R.T.: 4.751 min  
 Delta R.T.: 0.000 min  
 Response: 55819958  
 Conc: 2610.34 ng/ml



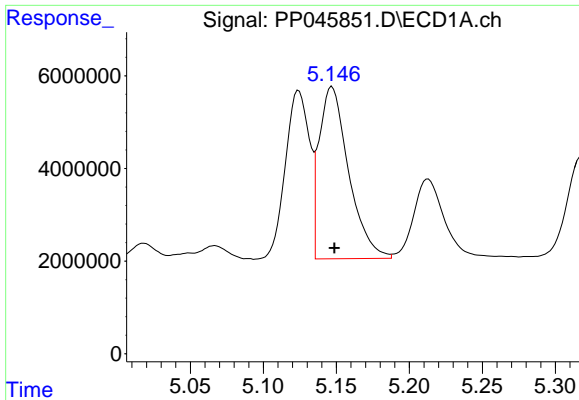
#16 AR-1242-1

R.T.: 5.124 min  
 Delta R.T.: -0.002 min  
 Response: 41765055  
 Conc: 698.83 ng/ml



#16 AR-1242-1

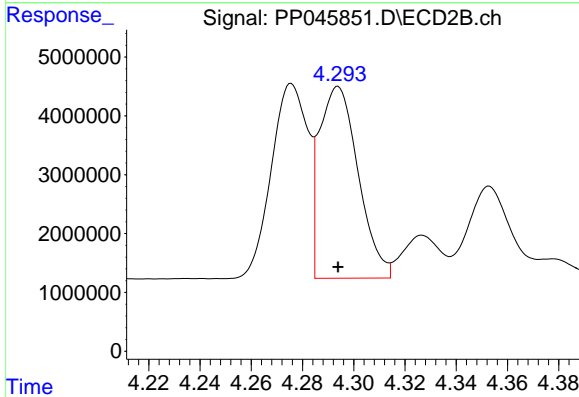
R.T.: 4.276 min  
 Delta R.T.: 0.000 min  
 Response: 32772165  
 Conc: 708.32 ng/ml



#17 AR-1242-2

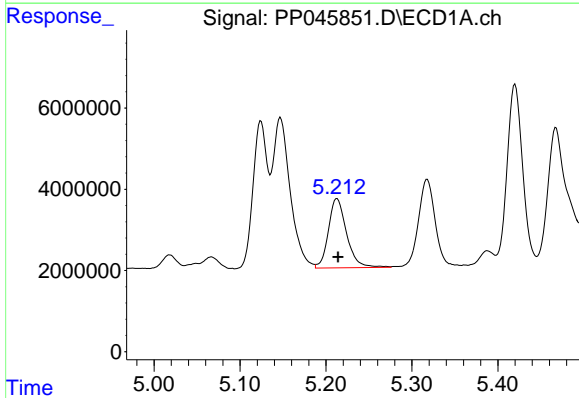
R.T.: 5.147 min  
 Delta R.T.: -0.002 min  
 Response: 52321700  
 Conc: 582.85 ng/ml

Instrument :  
 ECD\_P  
 ClientSampleId :



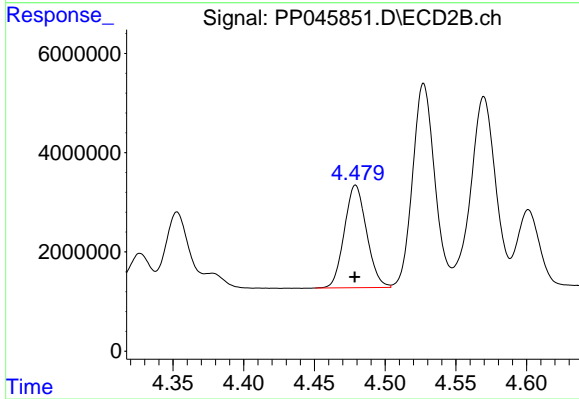
#17 AR-1242-2

R.T.: 4.294 min  
 Delta R.T.: 0.000 min  
 Response: 34339925  
 Conc: 529.57 ng/ml



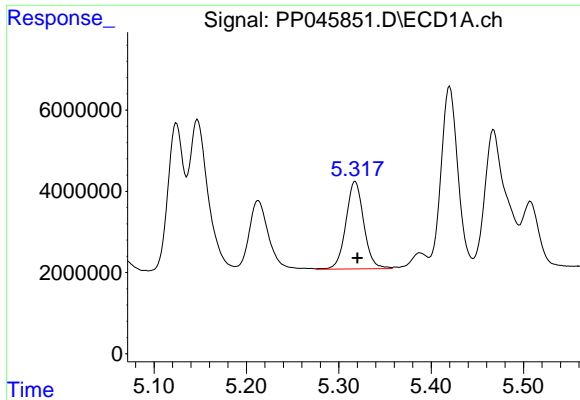
#18 AR-1242-3

R.T.: 5.213 min  
 Delta R.T.: -0.001 min  
 Response: 25005698  
 Conc: 450.77 ng/ml



#18 AR-1242-3

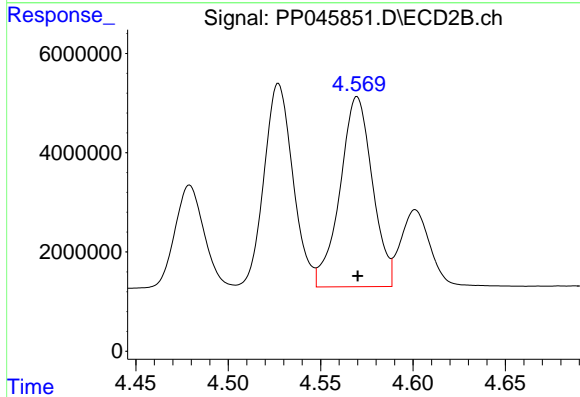
R.T.: 4.479 min  
 Delta R.T.: 0.000 min  
 Response: 22594299  
 Conc: 652.96 ng/ml



#19 AR-1242-4

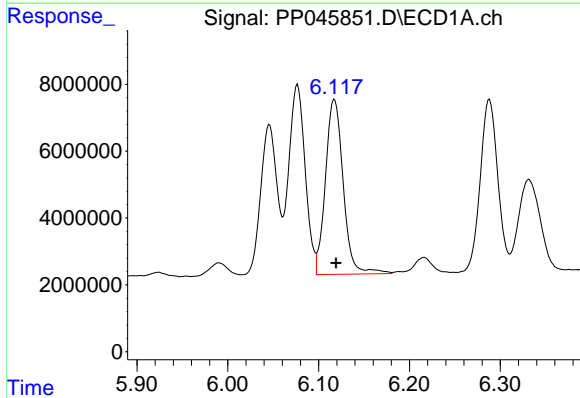
R.T.: 5.318 min  
 Delta R.T.: -0.002 min  
 Response: 28945120  
 Conc: 637.82 ng/ml

Instrument :  
 ECD\_P  
 ClientSampleId :



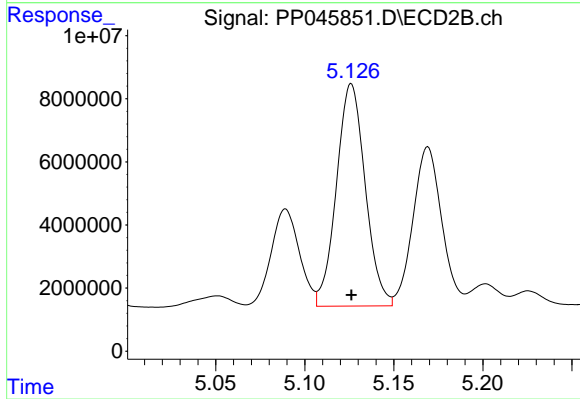
#19 AR-1242-4

R.T.: 4.570 min  
 Delta R.T.: 0.000 min  
 Response: 46777131  
 Conc: 1391.62 ng/ml



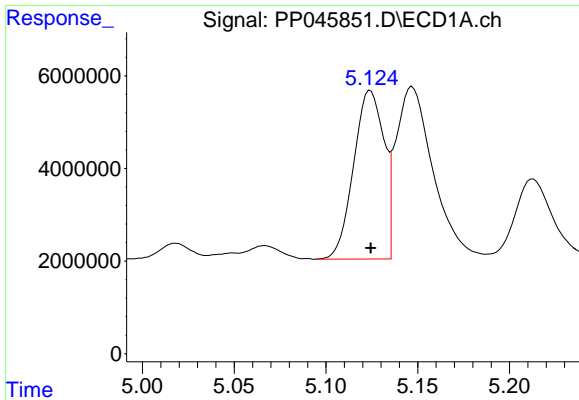
#20 AR-1242-5

R.T.: 6.117 min  
 Delta R.T.: -0.002 min  
 Response: 71285411  
 Conc: 1534.74 ng/ml



#20 AR-1242-5

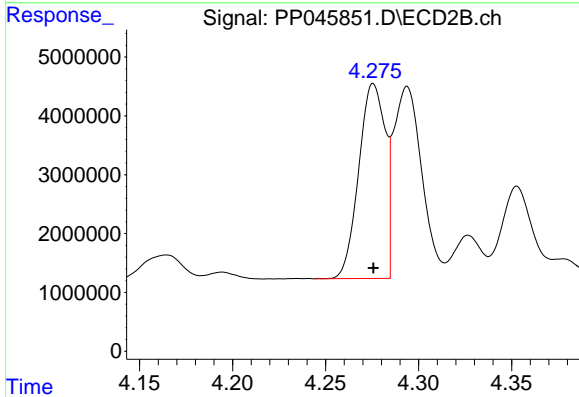
R.T.: 5.126 min  
 Delta R.T.: 0.000 min  
 Response: 79192709  
 Conc: 1803.18 ng/ml



#21 AR-1248-1

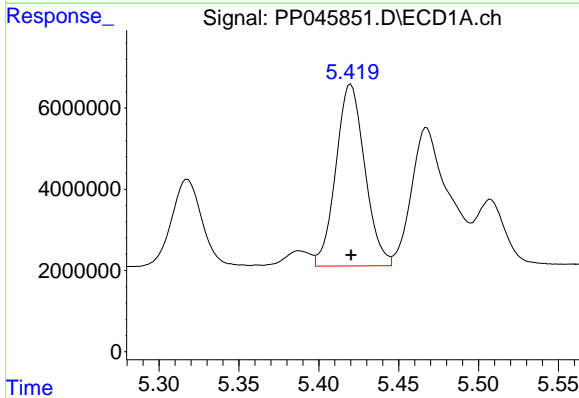
R.T.: 5.124 min  
 Delta R.T.: 0.000 min  
 Response: 41765055  
 Conc: 968.16 ng/ml

Instrument :  
 ECD\_P  
 ClientSampleId :



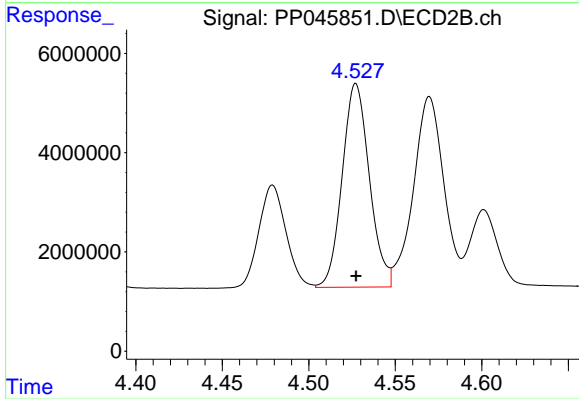
#21 AR-1248-1

R.T.: 4.276 min  
 Delta R.T.: 0.000 min  
 Response: 32772165  
 Conc: 955.64 ng/ml



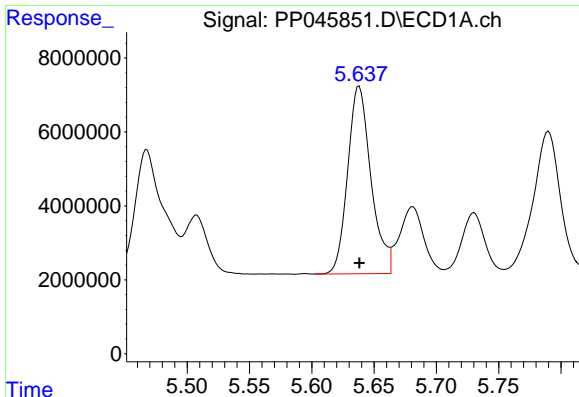
#22 AR-1248-2

R.T.: 5.420 min  
 Delta R.T.: 0.000 min  
 Response: 56371786  
 Conc: 942.96 ng/ml



#22 AR-1248-2

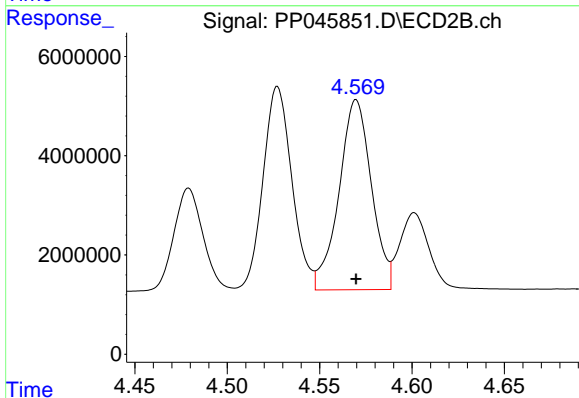
R.T.: 4.527 min  
 Delta R.T.: 0.000 min  
 Response: 44709810  
 Conc: 954.38 ng/ml



#23 AR-1248-3

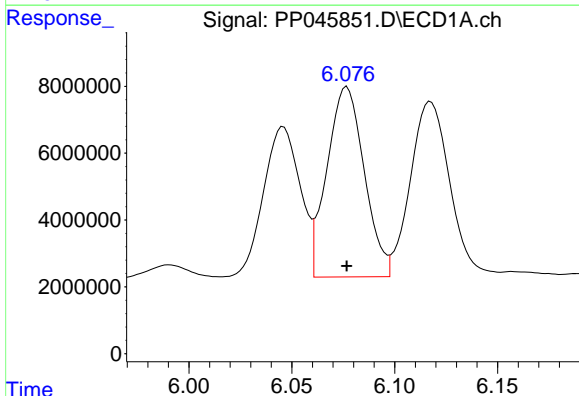
R.T.: 5.638 min  
 Delta R.T.: 0.000 min  
 Response: 66395541  
 Conc: 949.16 ng/ml

Instrument :  
 ECD\_P  
 ClientSampleId :



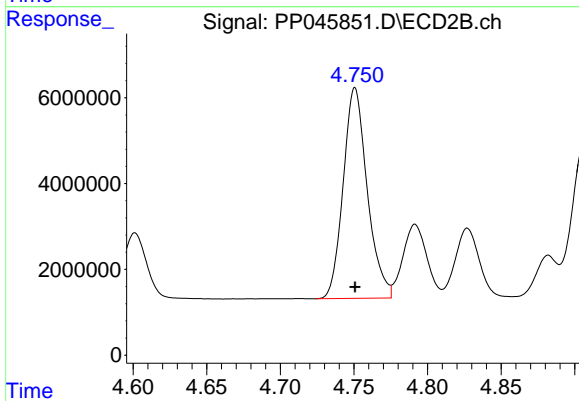
#23 AR-1248-3

R.T.: 4.570 min  
 Delta R.T.: 0.000 min  
 Response: 46777131  
 Conc: 957.01 ng/ml



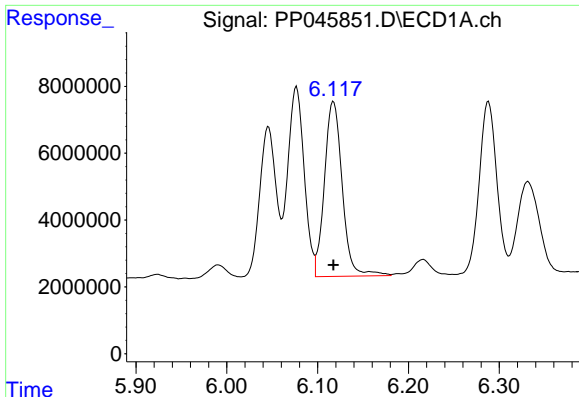
#24 AR-1248-4

R.T.: 6.077 min  
 Delta R.T.: 0.000 min  
 Response: 71756374  
 Conc: 907.58 ng/ml



#24 AR-1248-4

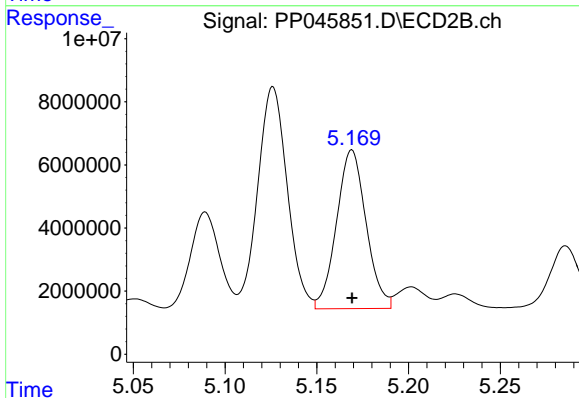
R.T.: 4.751 min  
 Delta R.T.: 0.000 min  
 Response: 55819958  
 Conc: 960.73 ng/ml



#25 AR-1248-5

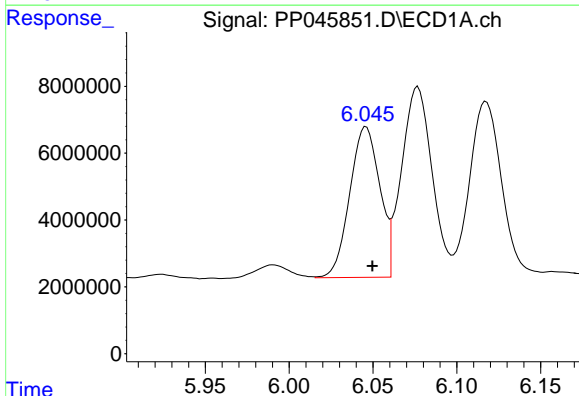
R.T.: 6.117 min  
 Delta R.T.: 0.000 min  
 Response: 71285411  
 Conc: 910.49 ng/ml

Instrument :  
 ECD\_P  
 ClientSampleId :



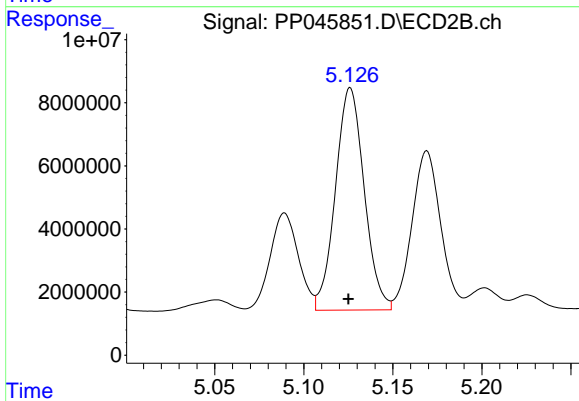
#25 AR-1248-5

R.T.: 5.169 min  
 Delta R.T.: 0.000 min  
 Response: 56382285  
 Conc: 960.60 ng/ml



#26 AR-1254-1

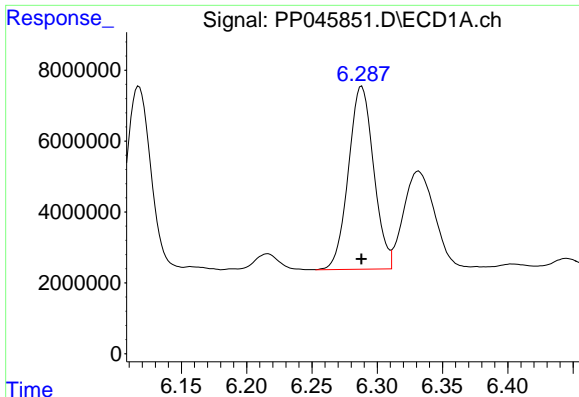
R.T.: 6.046 min  
 Delta R.T.: -0.004 min  
 Response: 56211192  
 Conc: 680.12 ng/ml



#26 AR-1254-1

R.T.: 5.126 min  
 Delta R.T.: 0.001 min  
 Response: 79192709  
 Conc: 897.79 ng/ml

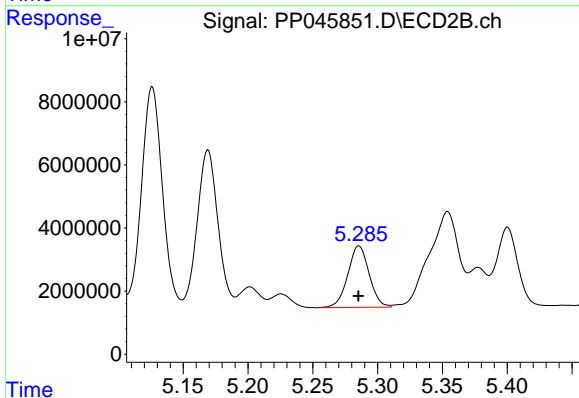




#27 AR-1254-2

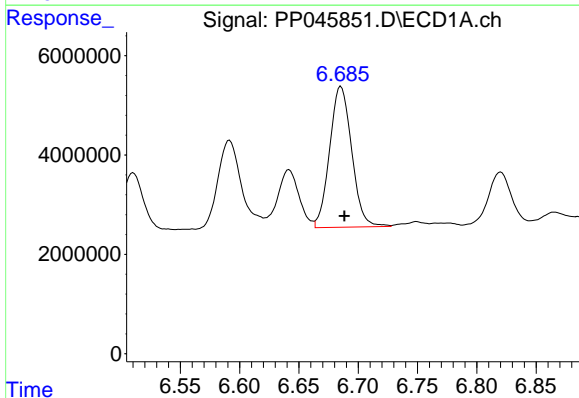
R.T.: 6.288 min  
 Delta R.T.: 0.000 min  
 Response: 69499255  
 Conc: 564.37 ng/ml

Instrument :  
 ECD\_P  
 ClientSampleId :



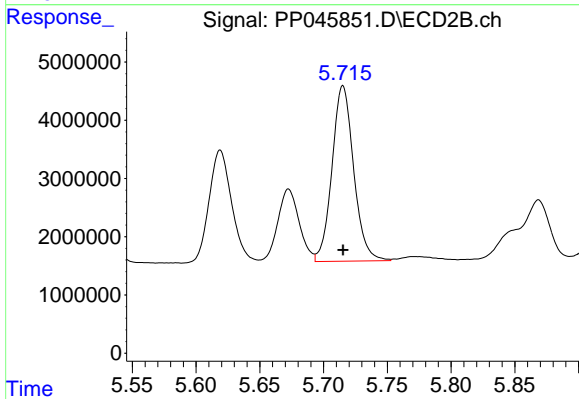
#27 AR-1254-2

R.T.: 5.286 min  
 Delta R.T.: 0.000 min  
 Response: 22287881  
 Conc: 295.31 ng/ml



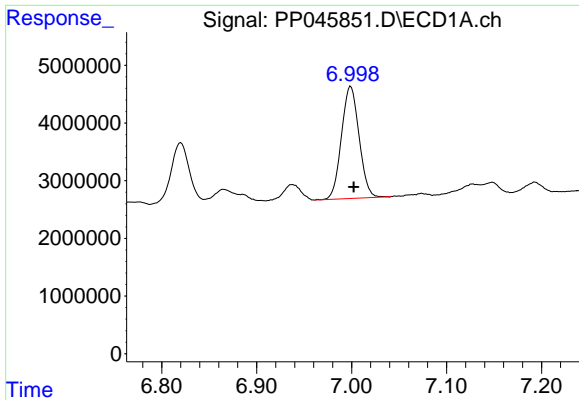
#28 AR-1254-3

R.T.: 6.686 min  
 Delta R.T.: -0.003 min  
 Response: 36655068  
 Conc: 304.93 ng/ml



#28 AR-1254-3

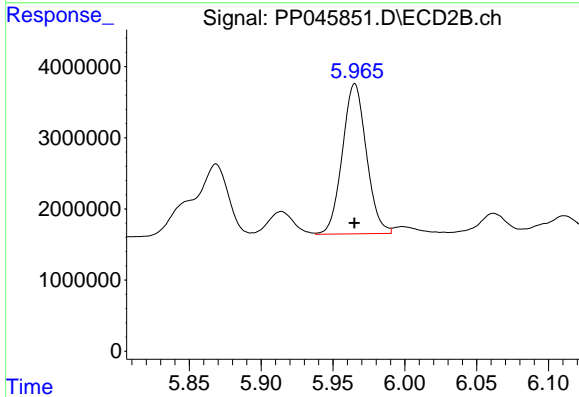
R.T.: 5.715 min  
 Delta R.T.: 0.000 min  
 Response: 35652091  
 Conc: 303.14 ng/ml



#29 AR-1254-4

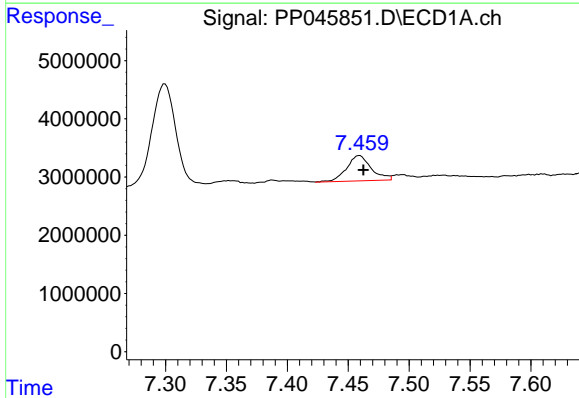
R.T.: 6.999 min  
Delta R.T.: -0.003 min  
Response: 25051646  
Conc: 284.04 ng/ml

Instrument :  
ECD\_P  
ClientSampleId :



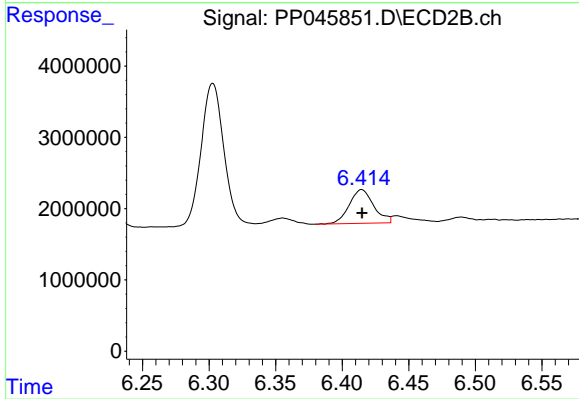
#29 AR-1254-4

R.T.: 5.965 min  
Delta R.T.: 0.000 min  
Response: 24597664  
Conc: 325.95 ng/ml



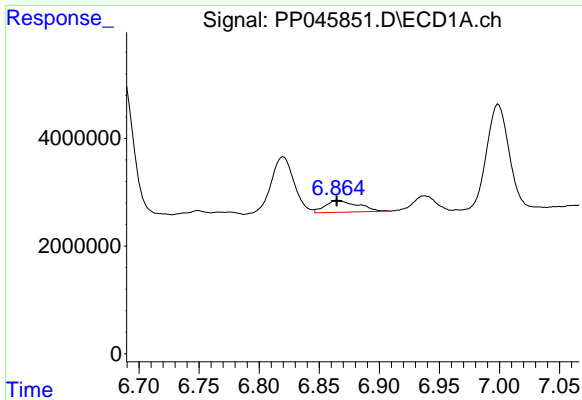
#30 AR-1254-5

R.T.: 7.459 min  
Delta R.T.: -0.003 min  
Response: 6103080  
Conc: 65.15 ng/ml



#30 AR-1254-5

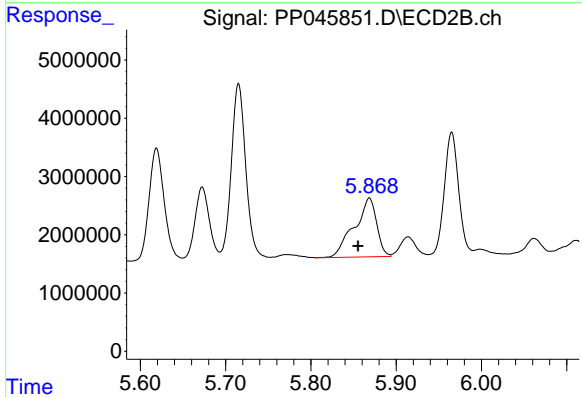
R.T.: 6.415 min  
Delta R.T.: 0.000 min  
Response: 6065456  
Conc: 59.20 ng/ml



#31 AR-1260-1

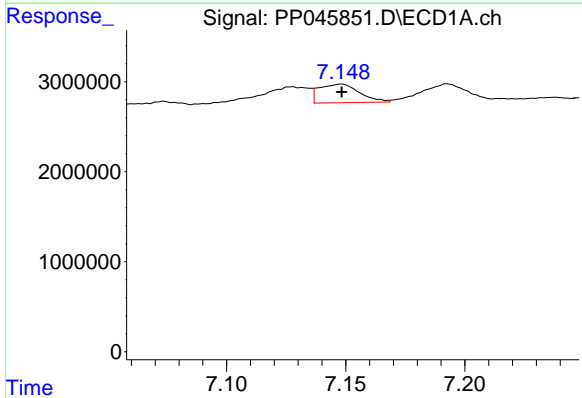
R.T.: 6.866 min  
 Delta R.T.: 0.001 min  
 Response: 4194843  
 Conc: 47.52 ng/ml

Instrument :  
 ECD\_P  
 ClientSampleId :



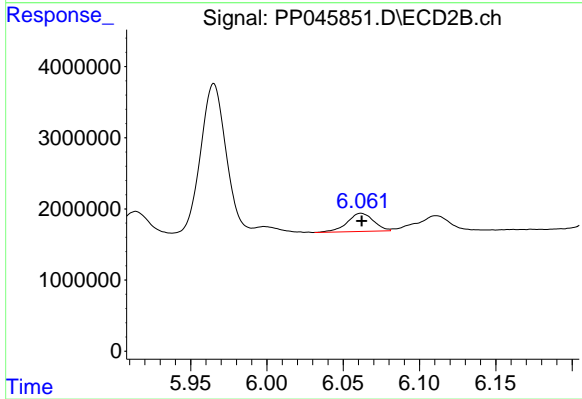
#31 AR-1260-1

R.T.: 5.869 min  
 Delta R.T.: 0.013 min  
 Response: 18374064  
 Conc: 232.15 ng/ml



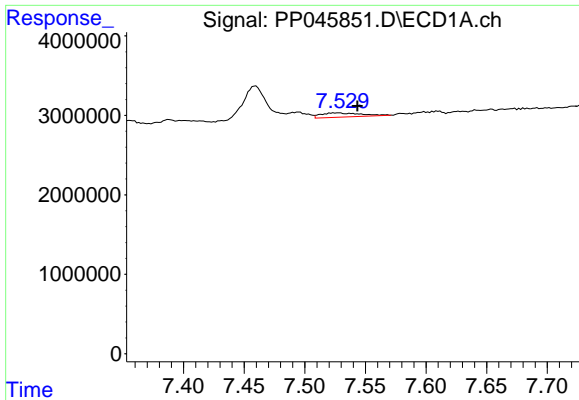
#32 AR-1260-2

R.T.: 7.148 min  
 Delta R.T.: 0.000 min  
 Response: 2446842  
 Conc: 23.88 ng/ml



#32 AR-1260-2

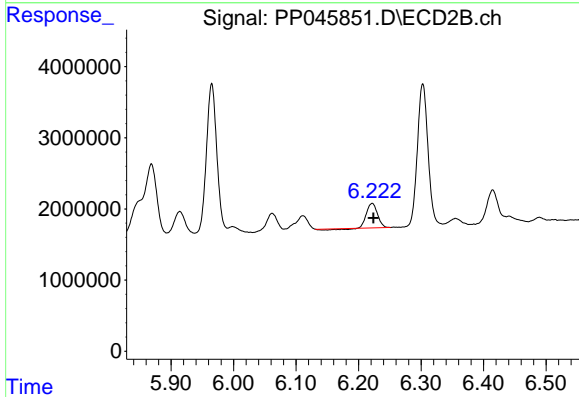
R.T.: 6.062 min  
 Delta R.T.: 0.000 min  
 Response: 3063753  
 Conc: 32.73 ng/ml



#33 AR-1260-3

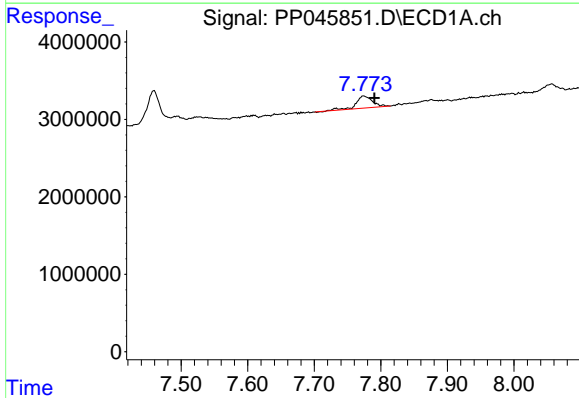
R.T.: 7.527 min  
 Delta R.T.: -0.017 min  
 Response: 1229433  
 Conc: 14.92 ng/ml

Instrument :  
 ECD\_P  
 ClientSampleId :



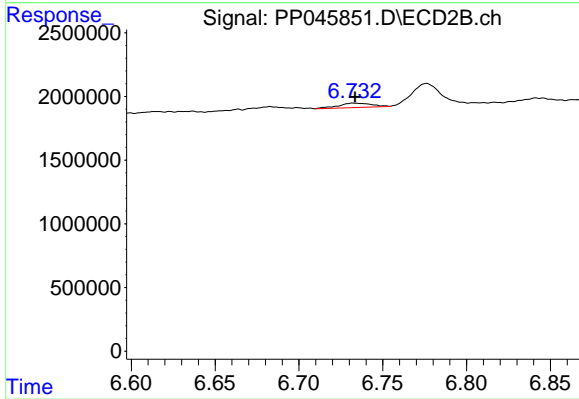
#33 AR-1260-3

R.T.: 6.222 min  
 Delta R.T.: -0.002 min  
 Response: 3952285  
 Conc: 44.62 ng/ml



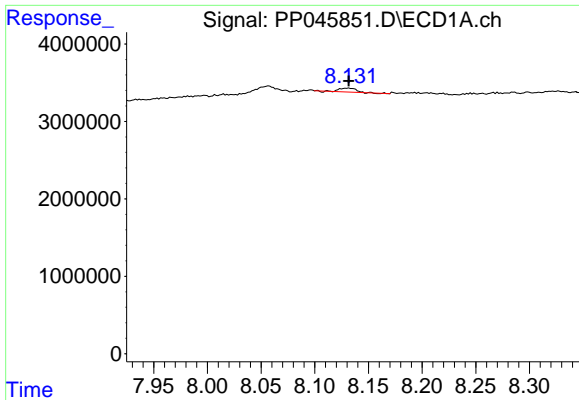
#34 AR-1260-4

R.T.: 7.775 min  
 Delta R.T.: -0.016 min  
 Response: 2685197  
 Conc: 31.69 ng/ml



#34 AR-1260-4

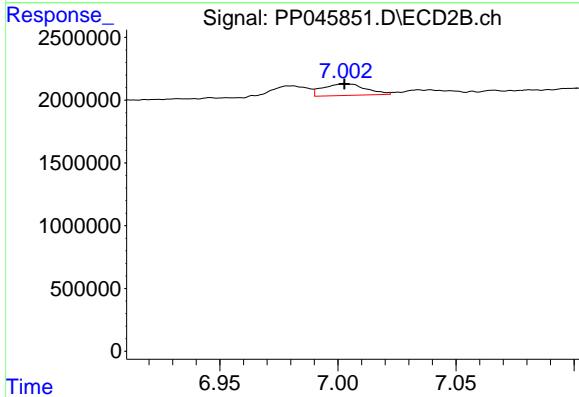
R.T.: 6.733 min  
 Delta R.T.: 0.000 min  
 Response: 466163  
 Conc: 6.49 ng/ml



#35 AR-1260-5

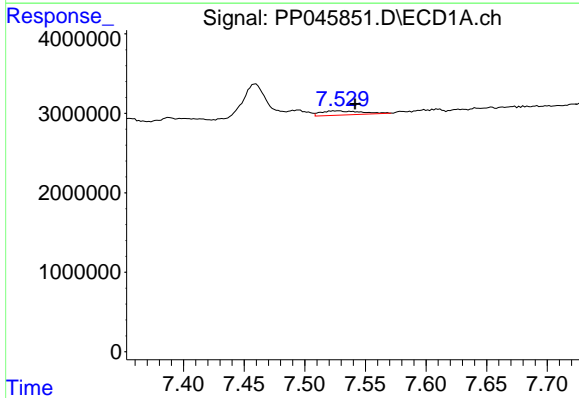
R.T.: 8.131 min  
 Delta R.T.: 0.000 min  
 Response: 573569  
 Conc: 3.49 ng/ml

Instrument :  
 ECD\_P  
 ClientSampleId :



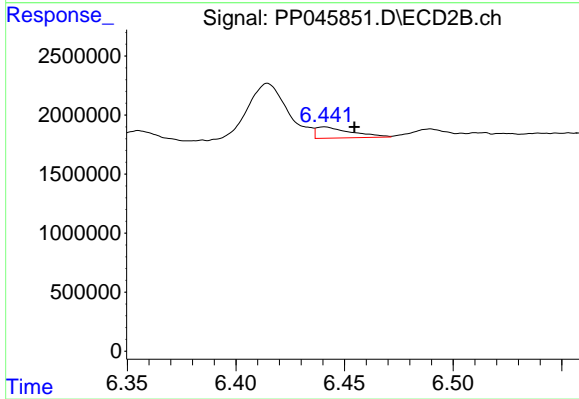
#35 AR-1260-5

R.T.: 7.003 min  
 Delta R.T.: 0.000 min  
 Response: 1178032  
 Conc: 6.94 ng/ml



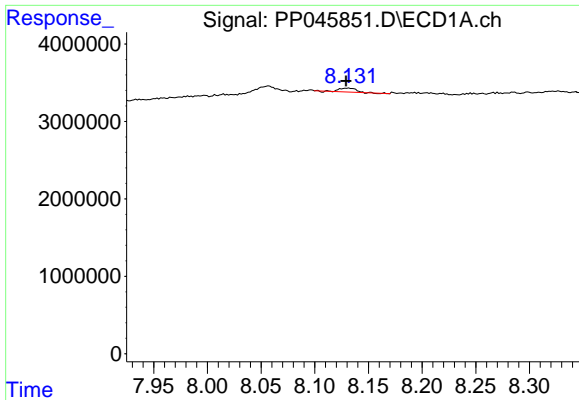
#36 AR-1262-1

R.T.: 7.527 min  
 Delta R.T.: -0.015 min  
 Response: 1229433  
 Conc: 10.68 ng/ml



#36 AR-1262-1

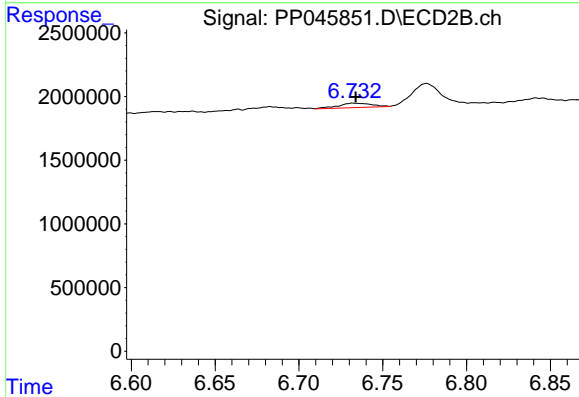
R.T.: 6.441 min  
 Delta R.T.: -0.014 min  
 Response: 1052397  
 Conc: 9.95 ng/ml



#37 AR-1262-2

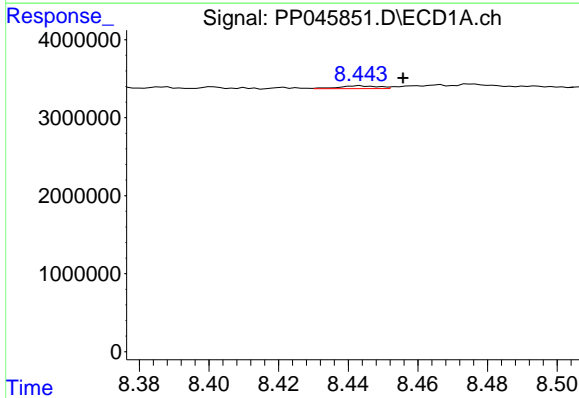
R.T.: 8.131 min  
 Delta R.T.: 0.002 min  
 Response: 573569  
 Conc: 3.20 ng/ml

Instrument :  
 ECD\_P  
 ClientSampleId :



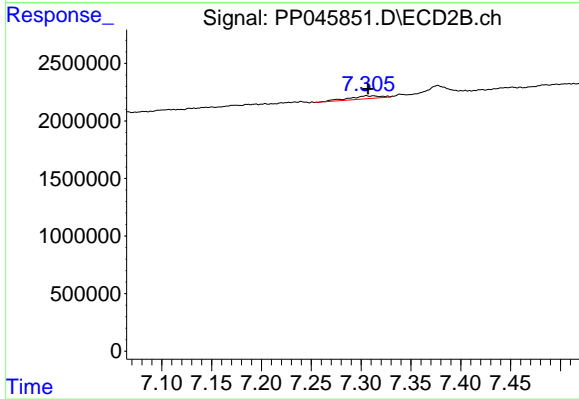
#37 AR-1262-2

R.T.: 6.733 min  
 Delta R.T.: 0.000 min  
 Response: 466163  
 Conc: 4.95 ng/ml



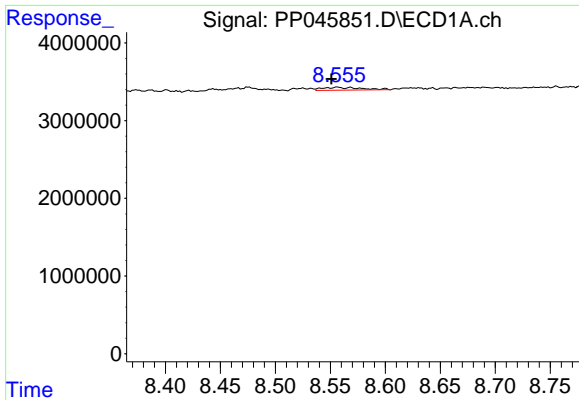
#38 AR-1262-3

R.T.: 8.444 min  
 Delta R.T.: -0.012 min  
 Response: 282060  
 Conc: 2.16 ng/ml



#38 AR-1262-3

R.T.: 7.305 min  
 Delta R.T.: -0.002 min  
 Response: 584344  
 Conc: 7.63 ng/ml

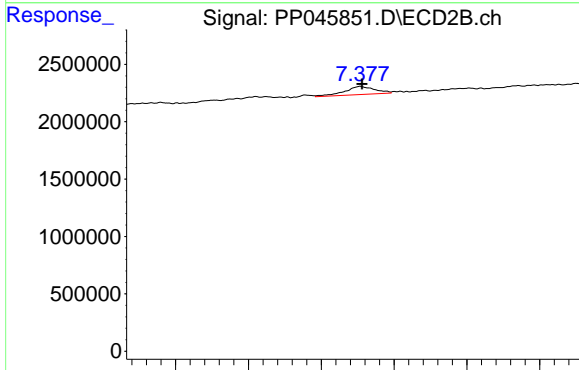


#39 AR-1262-4

R.T.: 8.557 min  
 Delta R.T.: 0.006 min  
 Response: 922197  
 Conc: 14.64 ng/ml

Instrument :  
 ECD\_P  
 ClientSampleId :

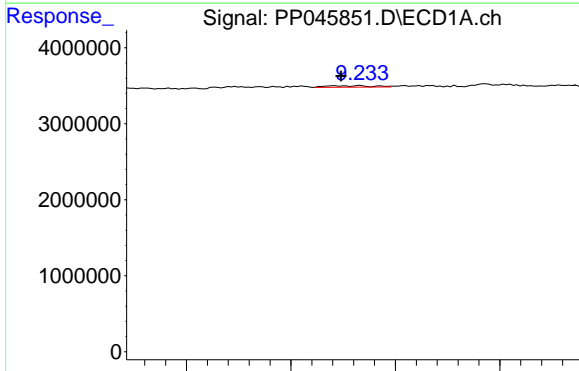
Time 8.40 8.45 8.50 8.55 8.60 8.65 8.70 8.75



#39 AR-1262-4

R.T.: 7.377 min  
 Delta R.T.: -0.001 min  
 Response: 1024908  
 Conc: 7.20 ng/ml

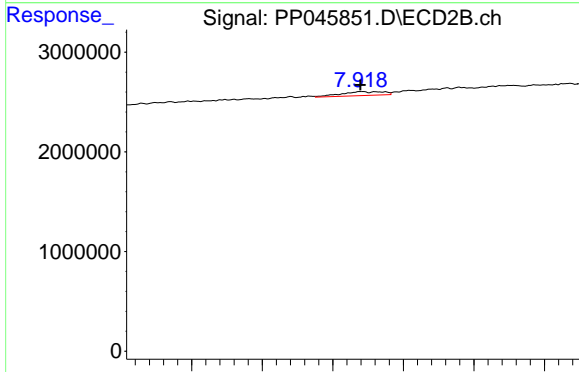
Time 7.25 7.30 7.35 7.40 7.45 7.50



#40 AR-1262-5

R.T.: 9.222 min  
 Delta R.T.: -0.002 min  
 Response: 302181  
 Conc: 4.43 ng/ml

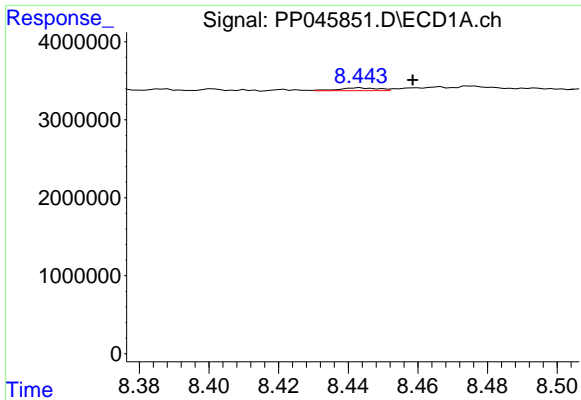
Time 9.15 9.20 9.25 9.30



#40 AR-1262-5

R.T.: 7.921 min  
 Delta R.T.: 0.000 min  
 Response: 795155  
 Conc: 11.35 ng/ml

Time 7.80 7.85 7.90 7.95 8.00 8.05

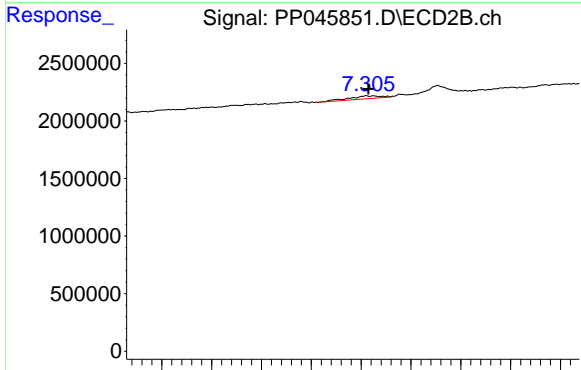


#41 AR-1268-1

R.T.: 8.444 min  
 Delta R.T.: -0.015 min  
 Response: 282060  
 Conc: 1.04 ng/ml

Instrument :  
 ECD\_P  
 ClientSampleId :

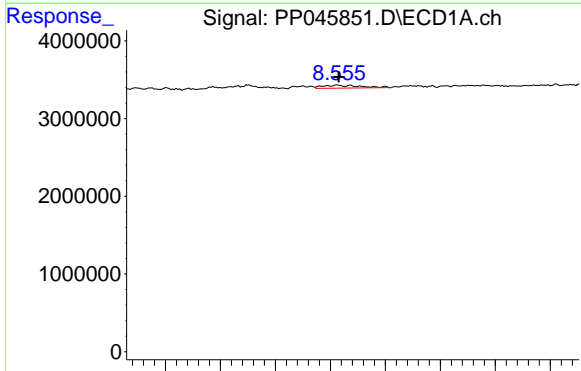
Time 8.38 8.40 8.42 8.44 8.46 8.48 8.50



#41 AR-1268-1

R.T.: 7.305 min  
 Delta R.T.: -0.002 min  
 Response: 584344  
 Conc: 2.63 ng/ml

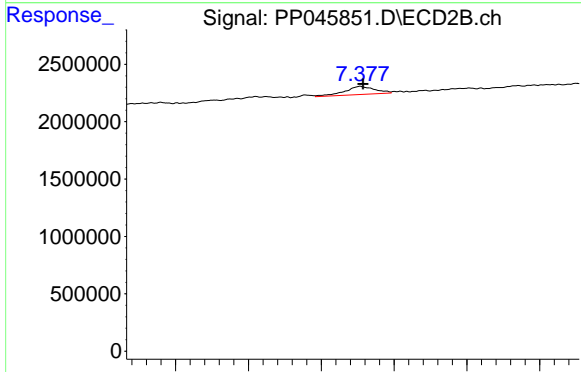
Time 7.10 7.15 7.20 7.25 7.30 7.35 7.40 7.45



#42 AR-1268-2

R.T.: 8.557 min  
 Delta R.T.: 0.000 min  
 Response: 922197  
 Conc: 3.65 ng/ml

Time 8.40 8.45 8.50 8.55 8.60 8.65 8.70 8.75

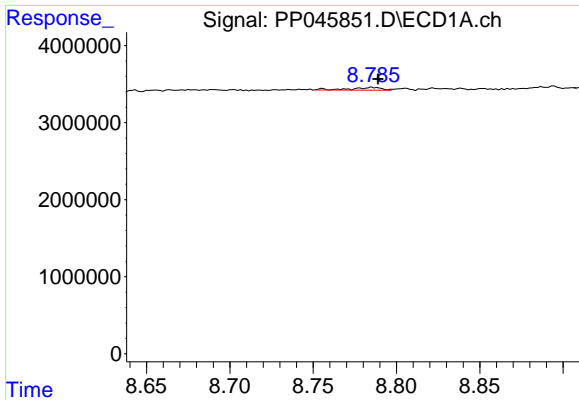


#42 AR-1268-2

R.T.: 7.377 min  
 Delta R.T.: -0.002 min  
 Response: 1024908  
 Conc: 5.06 ng/ml

Time 7.25 7.30 7.35 7.40 7.45 7.50

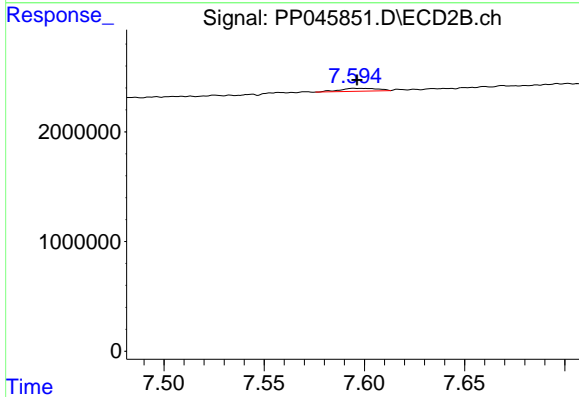




#43 AR-1268-3

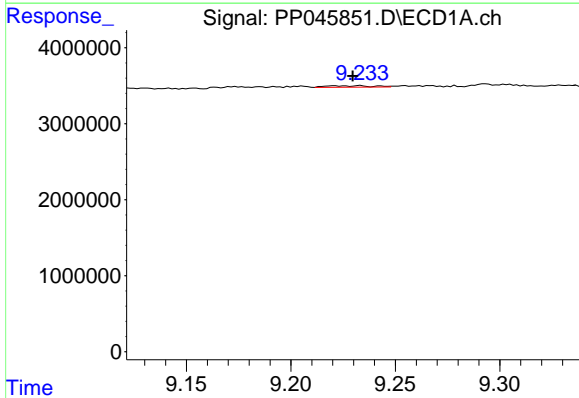
R.T.: 8.786 min  
 Delta R.T.: -0.003 min  
 Response: 473963  
 Conc: 2.09 ng/ml

Instrument :  
 ECD\_P  
 ClientSampleId :



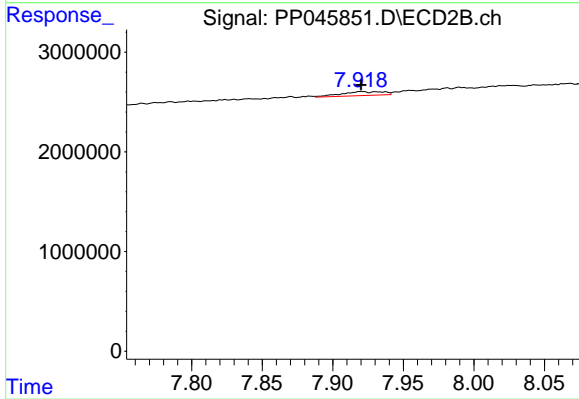
#43 AR-1268-3

R.T.: 7.596 min  
 Delta R.T.: 0.000 min  
 Response: 346247  
 Conc: 2.03 ng/ml



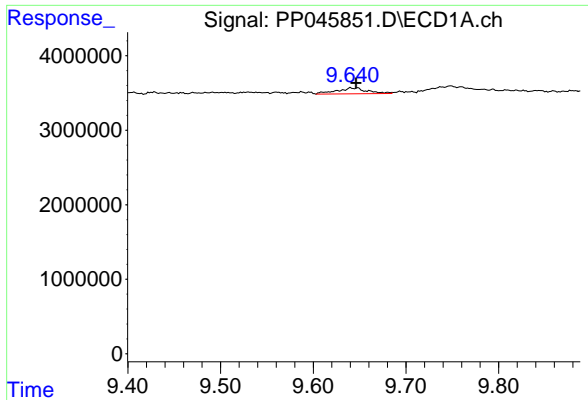
#44 AR-1268-4

R.T.: 9.222 min  
 Delta R.T.: -0.008 min  
 Response: 302181  
 Conc: 3.35 ng/ml



#44 AR-1268-4

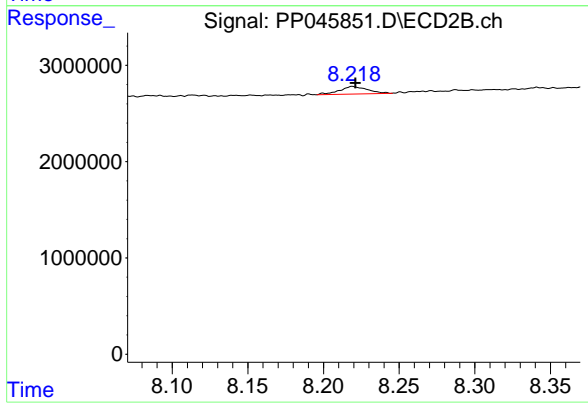
R.T.: 7.921 min  
 Delta R.T.: 0.000 min  
 Response: 795155  
 Conc: 10.07 ng/ml



#45 AR-1268-5

R.T.: 9.641 min  
 Delta R.T.: -0.005 min  
 Response: 1816982  
 Conc: 2.67 ng/ml

Instrument :  
 ECD\_P  
 ClientSampleId :



#45 AR-1268-5

R.T.: 8.219 min  
 Delta R.T.: -0.002 min  
 Response: 1020060  
 Conc: 1.84 ng/ml