

Data Path : Z:\pestpcbsrv\HPCHEM1\ECD_P\Data\PP041222\
 Data File : PP045852.D
 Signal(s) : Signal #1: ECD1A.ch Signal #2: ECD2B.ch
 Acq On : 11 Apr 2022 23:12
 Operator : YP\AJ
 Sample : AR1248ICC750
 Misc :
 ALS Vial : 16 Sample Multiplier: 1

Instrument :
 ECD_P
 ClientSampleId :
 AR1248ICC750

Integration File signal 1: autoint1.e
 Integration File signal 2: autoint2.e
 Quant Time: Apr 12 06:54:26 2022
 Quant Method : Z:\pestpcbsrv\HPCHEM1\ECD_P\methods\PP041222.M
 Quant Title : GC EXTRACTABLES
 QLast Update : Tue Apr 12 05:31:12 2022
 Response via : Initial Calibration
 Integrator: ChemStation

Volume Inj. : 2 µl
 Signal #1 Phase : ZB-MR1 Signal #2 Phase: ZB-MR2
 Signal #1 Info : 30Mx0.32mmx 0.50µ Signal #2 Info : 30M x 0.32mm x 0.25µm

Compound	RT#1	RT#2	Resp#1	Resp#2	ng/ml	ng/ml
System Monitoring Compounds						
1) SA Tetrachlo...	3.876	3.138	188.8E6	125.2E6	76.766	78.767
2) SA Decachlor...	9.986	8.478	136.6E6	108.2E6	83.197	75.926
Target Compounds						
3) L1 AR-1016-1	5.125	4.276	32497951	24855747	423.868	423.243
4) L1 AR-1016-2	5.149	4.294	41406299	25801445	358.070	308.833
5) L1 AR-1016-3	5.215	4.479	19091598	17006563	277.093	384.993 #
6) L1 AR-1016-4	5.319	4.527	22662096	33637303	385.119	942.625 #
7) L1 AR-1016-5	5.640	4.751	53077906	41947798	962.511	883.006
8) L2 AR-1221-1	4.099	3.362	369087	402348	14.168	19.806 #
9) L2 AR-1221-2	4.198	3.450	2586411	1887182	136.001	124.162
10) L2 AR-1221-3	4.275	3.530	2944434	2117335	47.900	45.879
11) L3 AR-1232-1	4.275	3.530	2944434	2117335	51.882	49.906
12) L3 AR-1232-2	4.836	4.294	14680591	25801445	550.515	643.755
13) L3 AR-1232-3	5.149	4.479	41406299	17006563	769.231	791.460
14) L3 AR-1232-4	5.319	4.570	22662096	35392728	856.679	1868.107 #
15) L3 AR-1232-5	5.422	4.751	45413652	41947798	2463.696	1961.632
16) L4 AR-1242-1	5.125	4.276	32497951	24855747	543.769	537.216
17) L4 AR-1242-2	5.149	4.294	41406299	25801445	461.255	397.892
18) L4 AR-1242-3	5.215	4.479	19091598	17006563	344.155	491.481 #
19) L4 AR-1242-4	5.319	4.570	22662096	35392728	499.374	1052.933 #
20) L4 AR-1242-5	6.120	5.126	61299693	58849650	1319.750	1339.982
21) L5 AR-1248-1	5.125	4.276	32497951	24855747	753.340	724.800
22) L5 AR-1248-2	5.422	4.527	45413652	33637303	759.658	718.026
23) L5 AR-1248-3	5.640	4.570	53077906	35392728	758.775	724.095
24) L5 AR-1248-4	6.079	4.751	60944019	41947798	770.823	721.974
25) L5 AR-1248-5	6.120	5.169	61299693	41935901	782.950	714.470
26) L6 AR-1254-1	6.048	5.126	47818757	58849650	578.577	667.164
27) L6 AR-1254-2	6.291	5.286	59031548	16731470	479.363	221.691 #
28) L6 AR-1254-3	6.689	5.716	30116048	26396294	250.536	224.439
29) L6 AR-1254-4	7.003	5.965	21186769	18298087	240.223	242.471
30) L6 AR-1254-5	7.463	6.415	5295190	4380835	56.526	42.760
31) L7 AR-1260-1	6.869	5.869	3737527	13596286	42.340	171.784 #
32) L7 AR-1260-2	7.148	6.062	2227917	2307915	21.747	24.655
33) L7 AR-1260-3	7.549	6.222	378671	3777255	4.596	42.641 #
34) L7 AR-1260-4	7.782	6.736	2525004	496793	29.797	6.919 #
35) L7 AR-1260-5	8.135	7.004	685823	889210	4.176	5.235 #
36) L8 AR-1262-1	7.549	6.439f	378671	972253	3.291	9.192 #
37) L8 AR-1262-2	8.135	6.736	685823	496793	3.829	5.277 #
38) L8 AR-1262-3	8.460	7.316	654133	896577	5.020	11.711 #
39) L8 AR-1262-4	8.560	7.382	832207	1135779	13.213	7.983 #
40) L8 AR-1262-5	9.217	7.921	160126	1039915	2.345	14.845 #
41) L9 AR-1268-1	8.460	7.316	654133	896577	2.405	4.041 #

Data Path : Z:\pestpcbsrv\HPCHEM1\ECD_P\Data\PP041222\
 Data File : PP045852.D
 Signal(s) : Signal #1: ECD1A.ch Signal #2: ECD2B.ch
 Acq On : 11 Apr 2022 23:12
 Operator : YP\AJ
 Sample : AR1248ICC750
 Misc :
 ALS Vial : 16 Sample Multiplier: 1

Instrument :
 ECD_P
 ClientSampleId :
 AR1248ICC750

Integration File signal 1: autoint1.e
 Integration File signal 2: autoint2.e
 Quant Time: Apr 12 06:54:26 2022
 Quant Method : Z:\pestpcbsrv\HPCHEM1\ECD_P\methods\PP041222.M
 Quant Title : GC EXTRACTABLES
 QLast Update : Tue Apr 12 05:31:12 2022
 Response via : Initial Calibration
 Integrator: ChemStation

Volume Inj. : 2 µl
 Signal #1 Phase : ZB-MR1 Signal #2 Phase: ZB-MR2
 Signal #1 Info : 30Mx0.32mmx 0.50µ Signal #2 Info : 30M x 0.32mm x 0.25µm

	Compound	RT#1	RT#2	Resp#1	Resp#2	ng/ml	ng/ml
42)	L9 AR-1268-2	8.560	7.382	832207	1135779	3.290	5.606 #
43)	L9 AR-1268-3	8.792	7.600	326590	191064	1.437	1.122
44)	L9 AR-1268-4	9.235	7.921	435070	1039915	4.821	13.176 #
45)	L9 AR-1268-5	9.655	8.222	1521314	814309	2.238	1.469 #

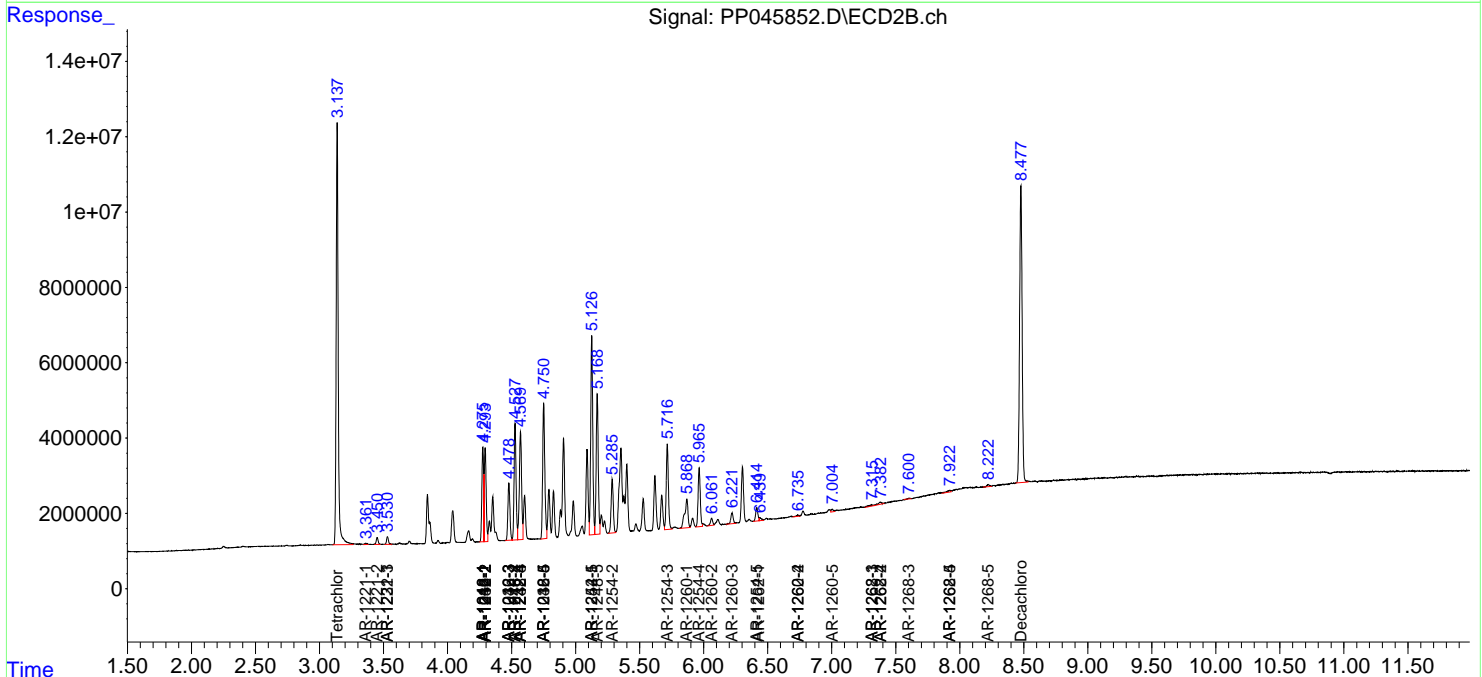
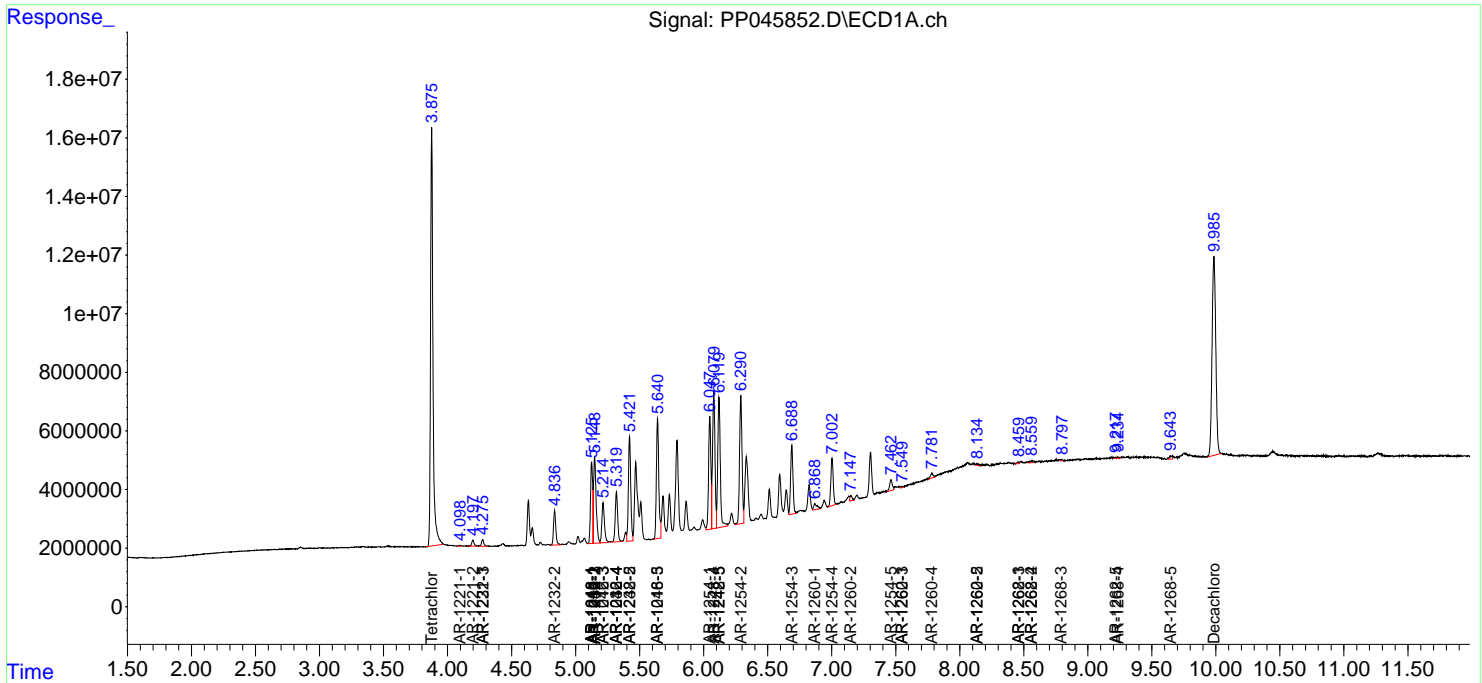
(f)=RT Delta > 1/2 Window (#)=Amounts differ by > 25% (m)=manual int.

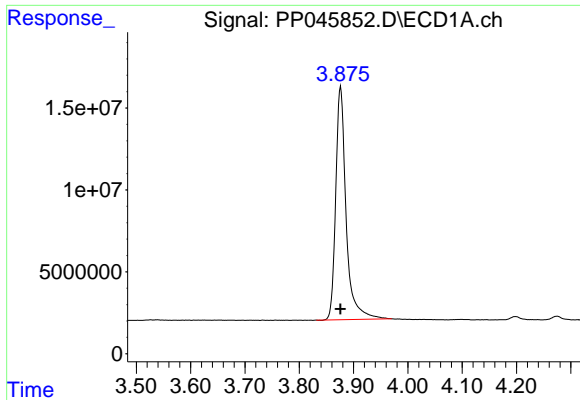
Data Path : Z:\pestpcbsrv\HPCHEM1\ECD_P\Data\PP041222\
 Data File : PP045852.D
 Signal(s) : Signal #1: ECD1A.ch Signal #2: ECD2B.ch
 Acq On : 11 Apr 2022 23:12
 Operator : YP\AJ
 Sample : AR1248ICC750
 Misc :
 ALS Vial : 16 Sample Multiplier: 1

Instrument :
 ECD_P
 ClientSampleId :
 AR1248ICC750

Integration File signal 1: autoint1.e
 Integration File signal 2: autoint2.e
 Quant Time: Apr 12 06:54:26 2022
 Quant Method : Z:\pestpcbsrv\HPCHEM1\ECD_P\methods\PP041222.M
 Quant Title : GC EXTRACTABLES
 QLast Update : Tue Apr 12 05:31:12 2022
 Response via : Initial Calibration
 Integrator: ChemStation

Volume Inj. : 2 µl
 Signal #1 Phase : ZB-MR1 Signal #2 Phase: ZB-MR2
 Signal #1 Info : 30Mx0.32mmx 0.50µ Signal #2 Info : 30M x 0.32mm x 0.25µm

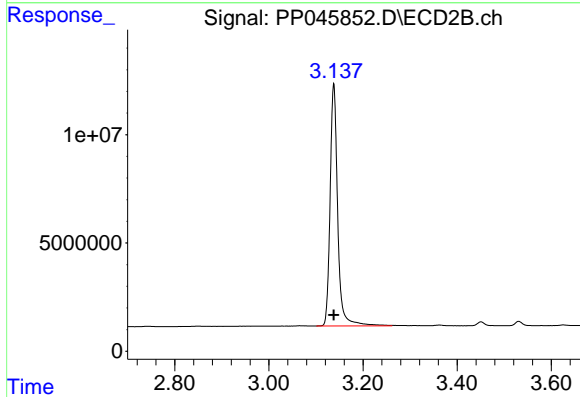




#1 Tetrachloro-m-xylene

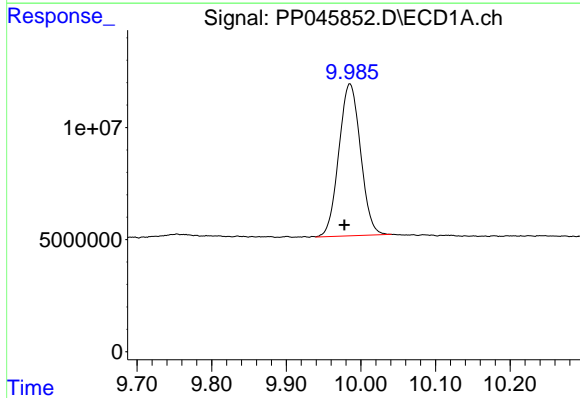
R.T.: 3.876 min
 Delta R.T.: 0.000 min
 Response: 188821799
 Conc: 76.77 ng/ml

Instrument :
 ECD_P
 ClientSampleId :
 AR1248ICC750



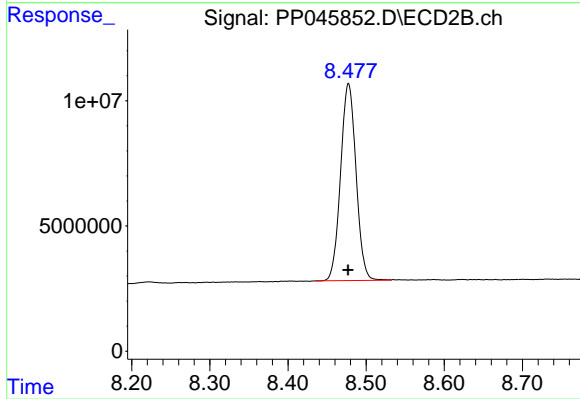
#1 Tetrachloro-m-xylene

R.T.: 3.138 min
 Delta R.T.: 0.000 min
 Response: 125158423
 Conc: 78.77 ng/ml



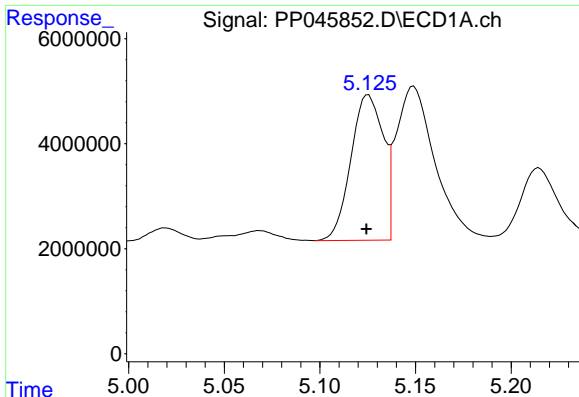
#2 Decachlorobiphenyl

R.T.: 9.986 min
 Delta R.T.: 0.008 min
 Response: 136573046
 Conc: 83.20 ng/ml



#2 Decachlorobiphenyl

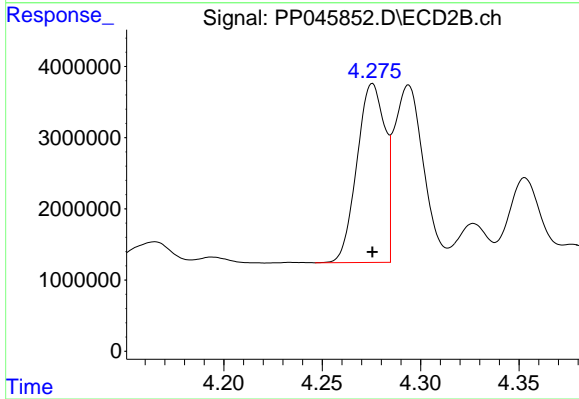
R.T.: 8.478 min
 Delta R.T.: 0.000 min
 Response: 108218855
 Conc: 75.93 ng/ml



#3 AR-1016-1

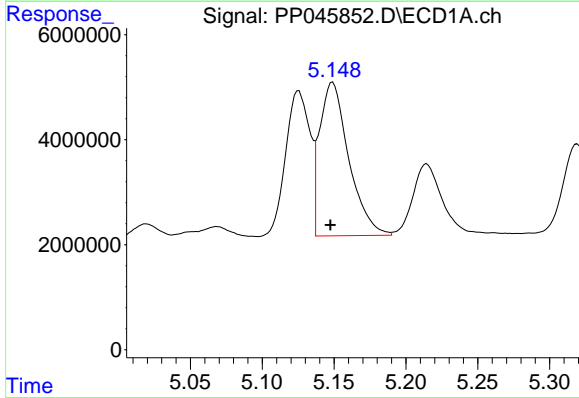
R.T.: 5.125 min
 Delta R.T.: 0.000 min
 Response: 32497951
 Conc: 423.87 ng/ml

Instrument :
 ECD_P
 ClientSampleId :
 AR1248ICC750



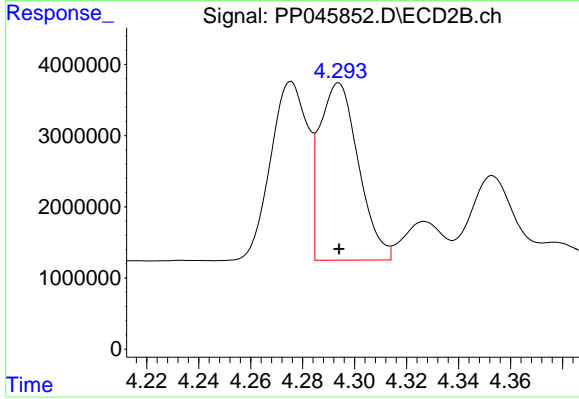
#3 AR-1016-1

R.T.: 4.276 min
 Delta R.T.: 0.000 min
 Response: 24855747
 Conc: 423.24 ng/ml



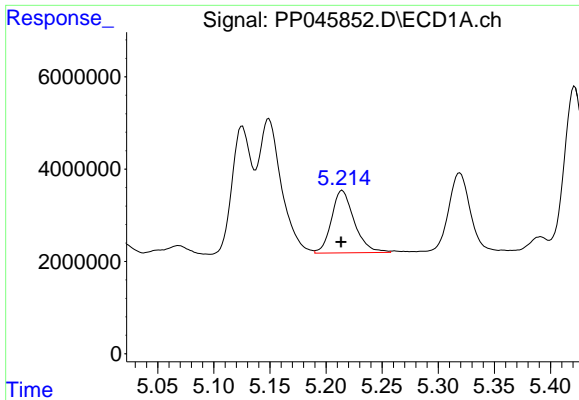
#4 AR-1016-2

R.T.: 5.149 min
 Delta R.T.: 0.002 min
 Response: 41406299
 Conc: 358.07 ng/ml



#4 AR-1016-2

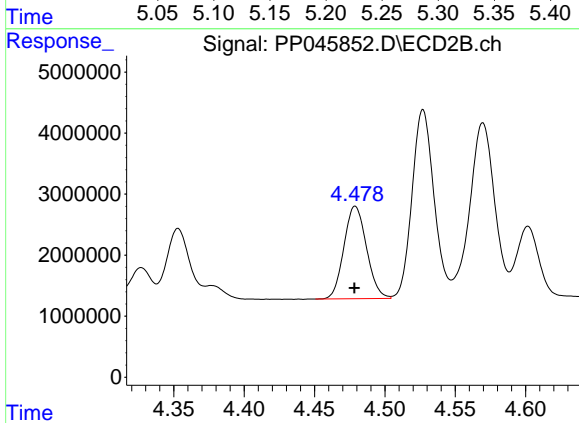
R.T.: 4.294 min
 Delta R.T.: 0.000 min
 Response: 25801445
 Conc: 308.83 ng/ml



#5 AR-1016-3

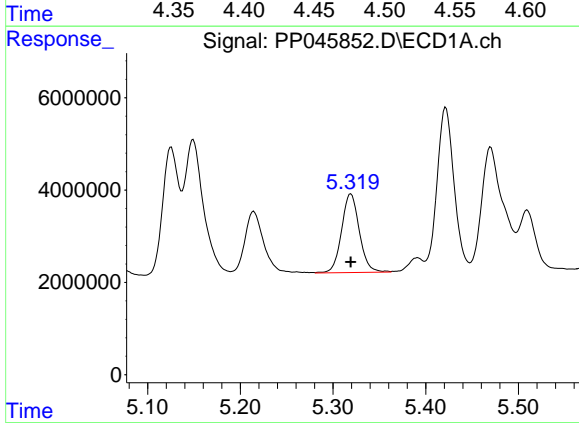
R.T.: 5.215 min
 Delta R.T.: 0.001 min
 Response: 19091598
 Conc: 277.09 ng/ml

Instrument :
 ECD_P
 ClientSampleId :
 AR1248ICC750



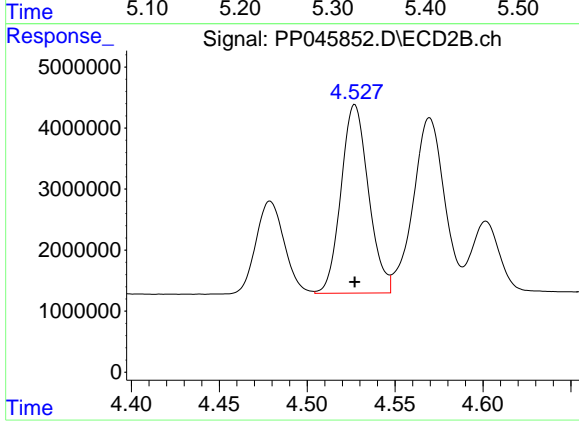
#5 AR-1016-3

R.T.: 4.479 min
 Delta R.T.: 0.000 min
 Response: 17006563
 Conc: 384.99 ng/ml



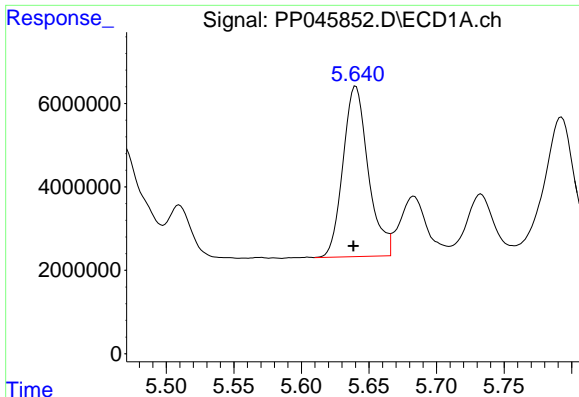
#6 AR-1016-4

R.T.: 5.319 min
 Delta R.T.: 0.000 min
 Response: 22662096
 Conc: 385.12 ng/ml



#6 AR-1016-4

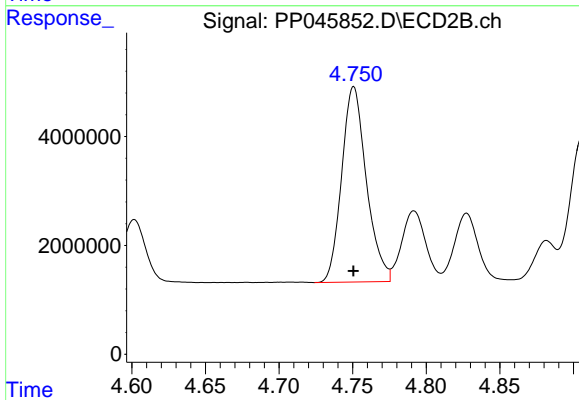
R.T.: 4.527 min
 Delta R.T.: 0.000 min
 Response: 33637303
 Conc: 942.63 ng/ml



#7 AR-1016-5

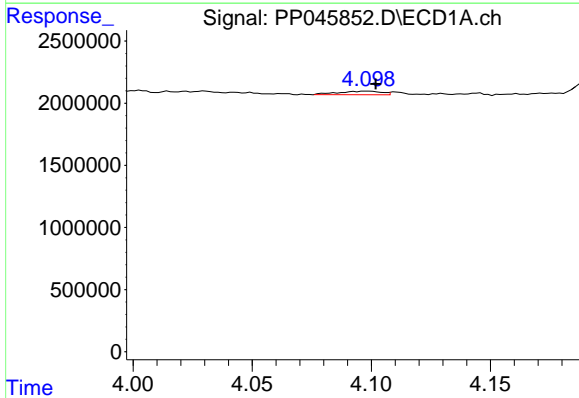
R.T.: 5.640 min
 Delta R.T.: 0.002 min
 Response: 53077906
 Conc: 962.51 ng/ml

Instrument :
 ECD_P
 ClientSampleId :
 AR1248ICC750



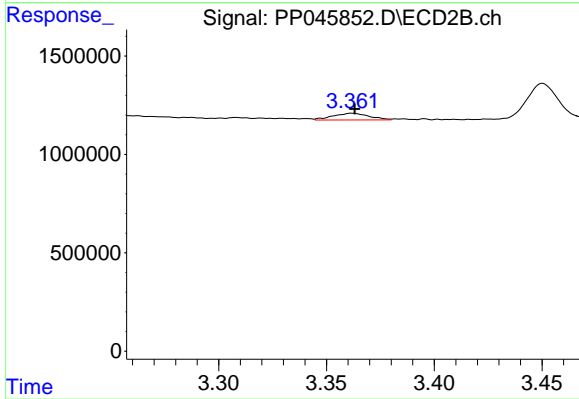
#7 AR-1016-5

R.T.: 4.751 min
 Delta R.T.: 0.000 min
 Response: 41947798
 Conc: 883.01 ng/ml



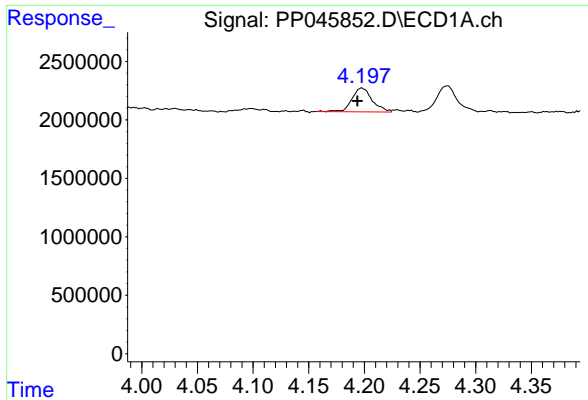
#8 AR-1221-1

R.T.: 4.099 min
 Delta R.T.: -0.003 min
 Response: 369087
 Conc: 14.17 ng/ml



#8 AR-1221-1

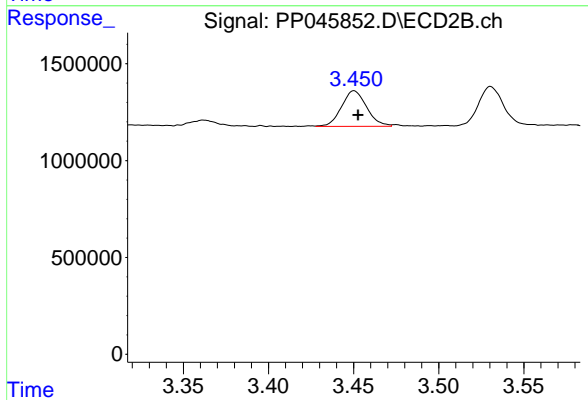
R.T.: 3.362 min
 Delta R.T.: -0.001 min
 Response: 402348
 Conc: 19.81 ng/ml



#9 AR-1221-2

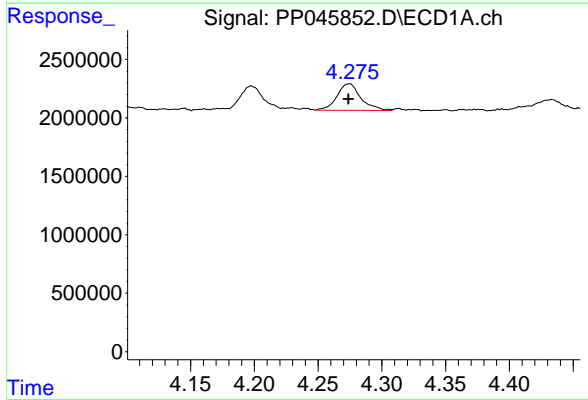
R.T.: 4.198 min
 Delta R.T.: 0.004 min
 Response: 2586411
 Conc: 136.00 ng/ml

Instrument :
 ECD_P
 ClientSampleId :
 AR1248ICC750



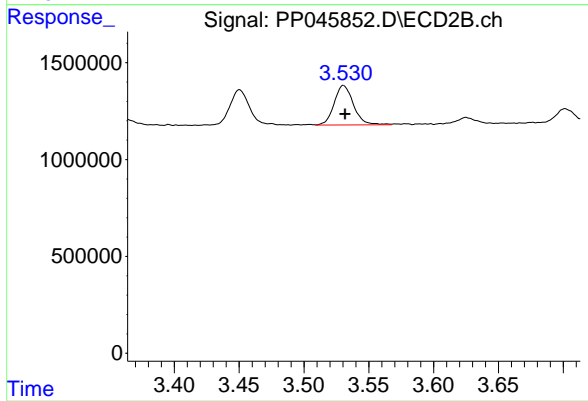
#9 AR-1221-2

R.T.: 3.450 min
 Delta R.T.: -0.002 min
 Response: 1887182
 Conc: 124.16 ng/ml



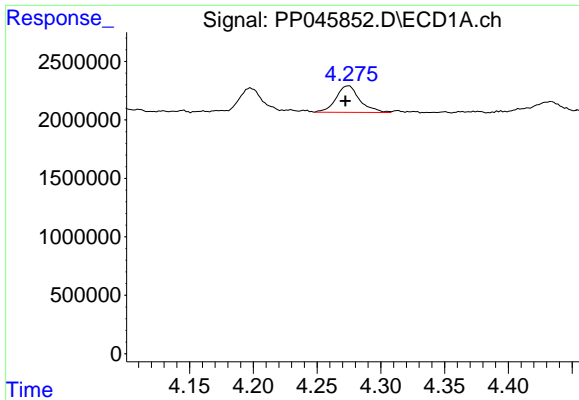
#10 AR-1221-3

R.T.: 4.275 min
 Delta R.T.: 0.001 min
 Response: 2944434
 Conc: 47.90 ng/ml



#10 AR-1221-3

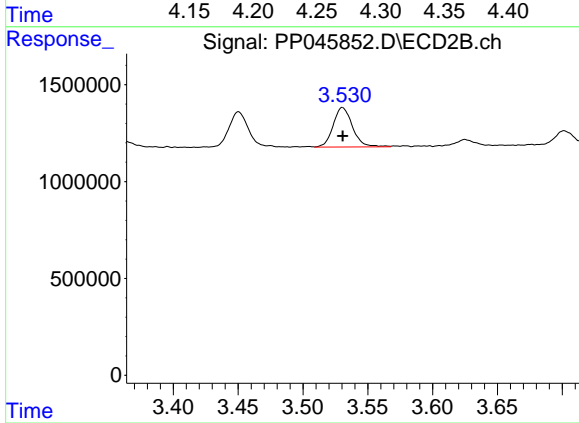
R.T.: 3.530 min
 Delta R.T.: -0.001 min
 Response: 2117335
 Conc: 45.88 ng/ml



#11 AR-1232-1

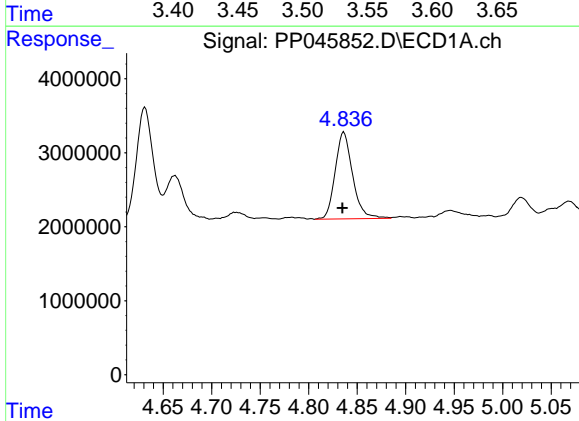
R.T.: 4.275 min
 Delta R.T.: 0.003 min
 Response: 2944434
 Conc: 51.88 ng/ml

Instrument :
 ECD_P
 ClientSampleId :
 AR1248ICC750



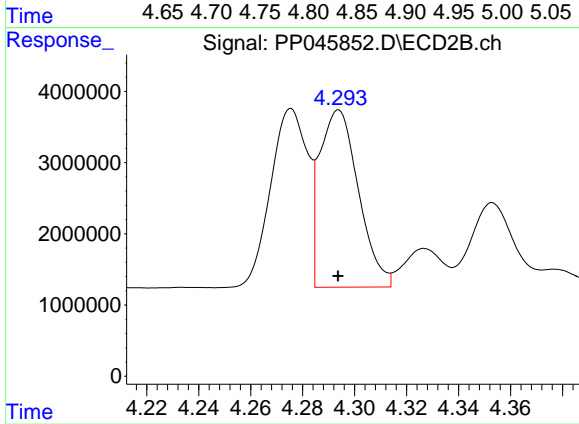
#11 AR-1232-1

R.T.: 3.530 min
 Delta R.T.: 0.000 min
 Response: 2117335
 Conc: 49.91 ng/ml



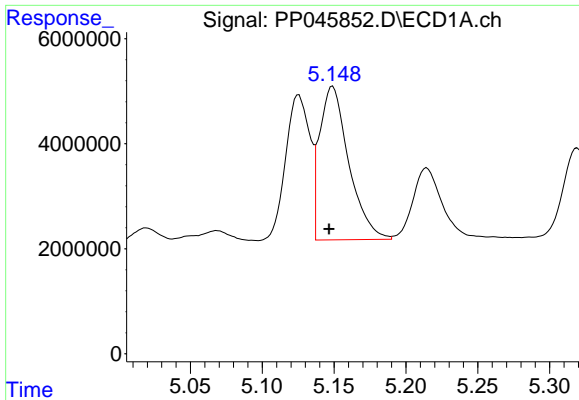
#12 AR-1232-2

R.T.: 4.836 min
 Delta R.T.: 0.002 min
 Response: 14680591
 Conc: 550.52 ng/ml



#12 AR-1232-2

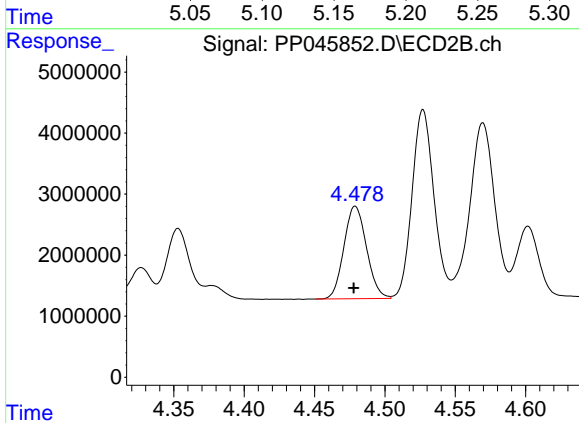
R.T.: 4.294 min
 Delta R.T.: 0.000 min
 Response: 25801445
 Conc: 643.76 ng/ml



#13 AR-1232-3

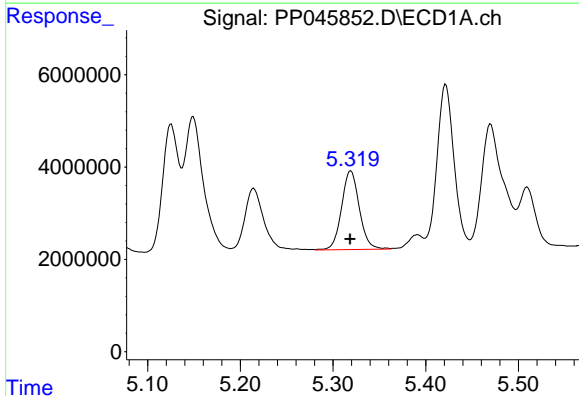
R.T.: 5.149 min
 Delta R.T.: 0.003 min
 Response: 41406299
 Conc: 769.23 ng/ml

Instrument :
 ECD_P
 ClientSampleId :
 AR1248ICC750



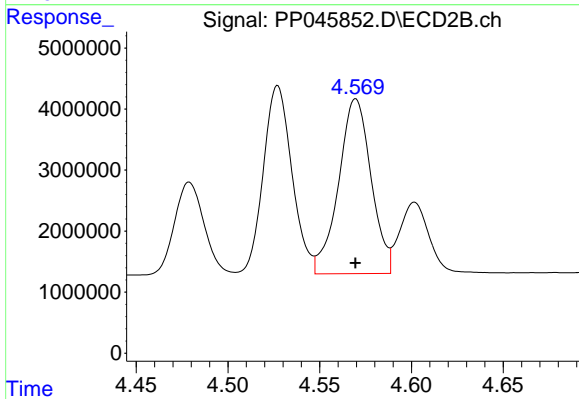
#13 AR-1232-3

R.T.: 4.479 min
 Delta R.T.: 0.000 min
 Response: 17006563
 Conc: 791.46 ng/ml



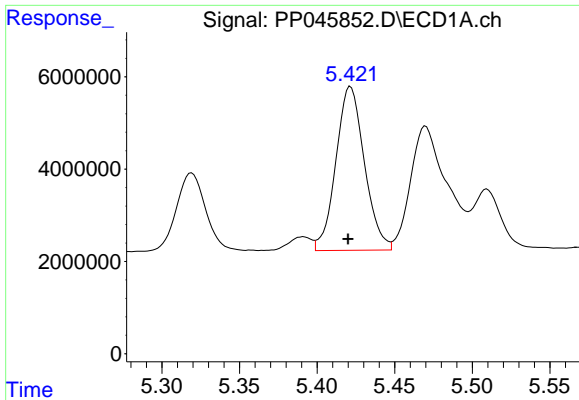
#14 AR-1232-4

R.T.: 5.319 min
 Delta R.T.: 0.000 min
 Response: 22662096
 Conc: 856.68 ng/ml



#14 AR-1232-4

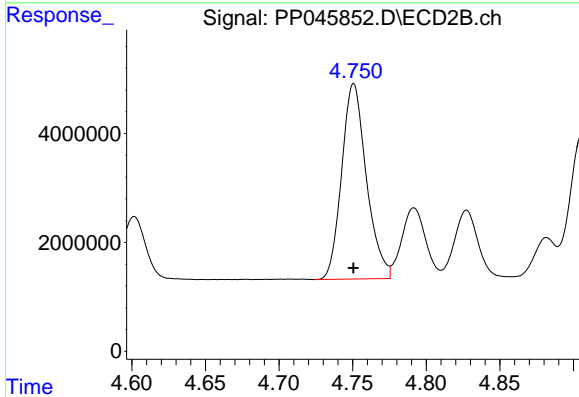
R.T.: 4.570 min
 Delta R.T.: 0.000 min
 Response: 35392728
 Conc: 1868.11 ng/ml



#15 AR-1232-5

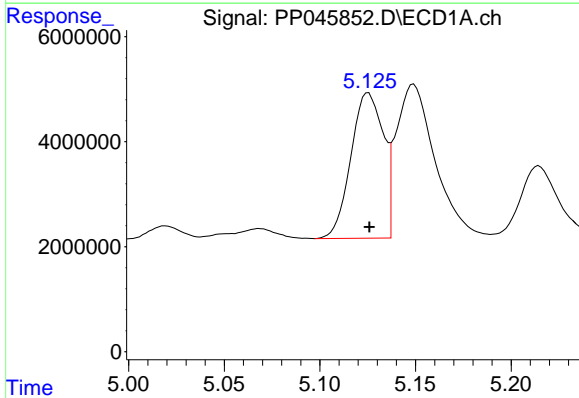
R.T.: 5.422 min
 Delta R.T.: 0.002 min
 Response: 45413652
 Conc: 2463.70 ng/ml

Instrument :
 ECD_P
 ClientSampleId :
 AR1248ICC750



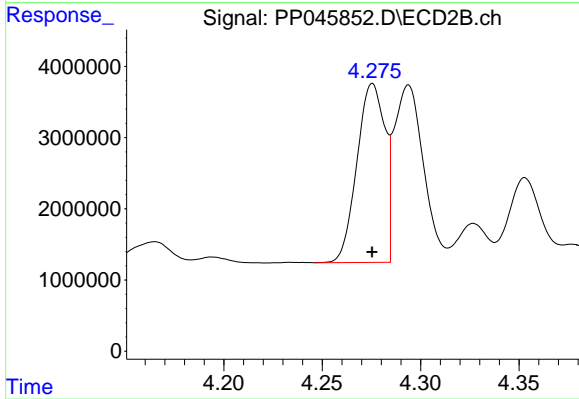
#15 AR-1232-5

R.T.: 4.751 min
 Delta R.T.: 0.000 min
 Response: 41947798
 Conc: 1961.63 ng/ml



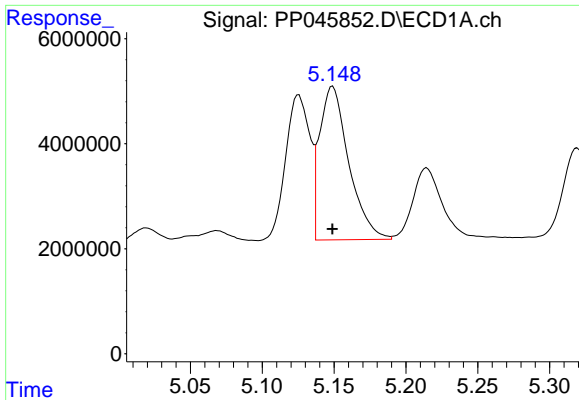
#16 AR-1242-1

R.T.: 5.125 min
 Delta R.T.: 0.000 min
 Response: 32497951
 Conc: 543.77 ng/ml



#16 AR-1242-1

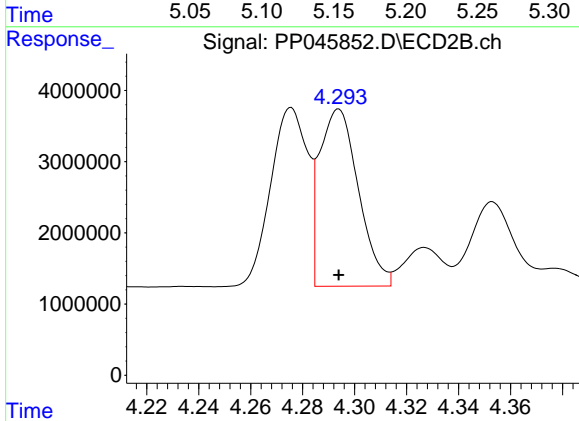
R.T.: 4.276 min
 Delta R.T.: 0.000 min
 Response: 24855747
 Conc: 537.22 ng/ml



#17 AR-1242-2

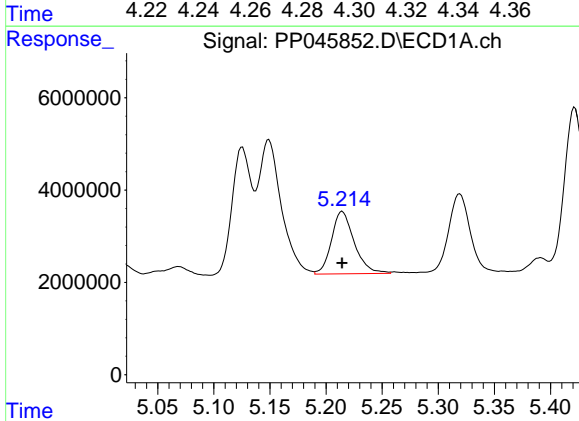
R.T.: 5.149 min
 Delta R.T.: 0.000 min
 Response: 41406299
 Conc: 461.26 ng/ml

Instrument :
 ECD_P
 ClientSampleId :
 AR1248ICC750



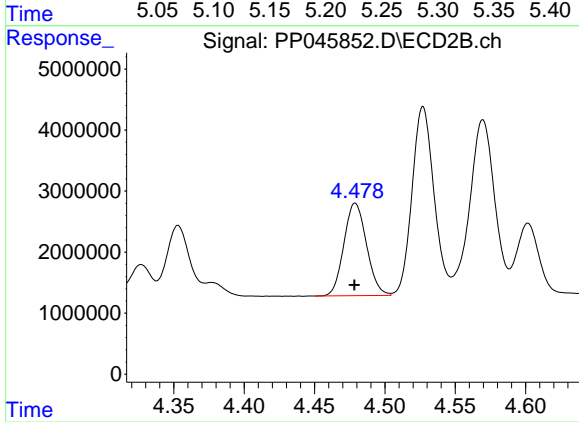
#17 AR-1242-2

R.T.: 4.294 min
 Delta R.T.: 0.000 min
 Response: 25801445
 Conc: 397.89 ng/ml



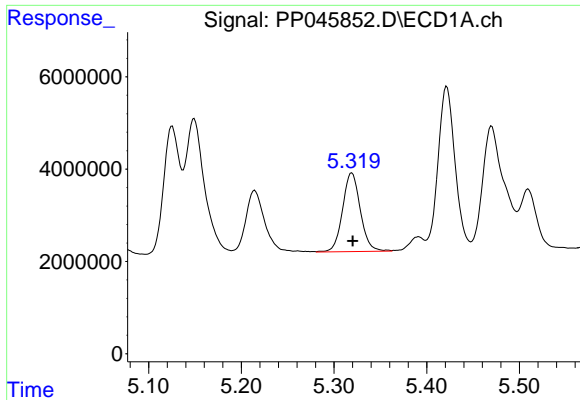
#18 AR-1242-3

R.T.: 5.215 min
 Delta R.T.: 0.000 min
 Response: 19091598
 Conc: 344.16 ng/ml



#18 AR-1242-3

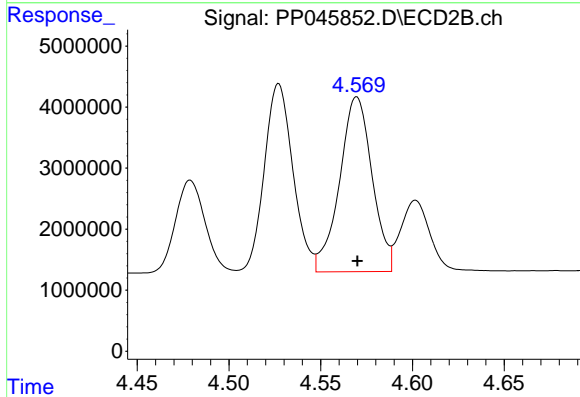
R.T.: 4.479 min
 Delta R.T.: 0.000 min
 Response: 17006563
 Conc: 491.48 ng/ml



#19 AR-1242-4

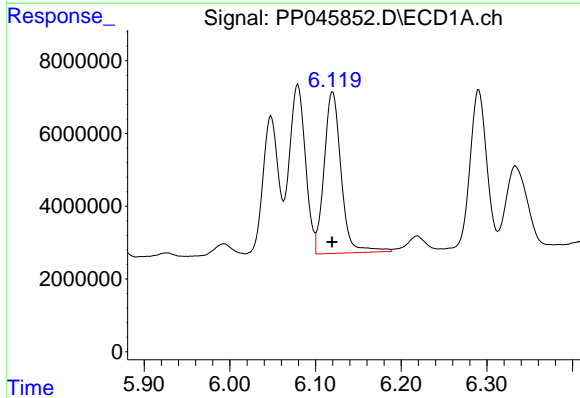
R.T.: 5.319 min
 Delta R.T.: 0.000 min
 Response: 22662096
 Conc: 499.37 ng/ml

Instrument :
 ECD_P
 ClientSampleId :
 AR1248ICC750



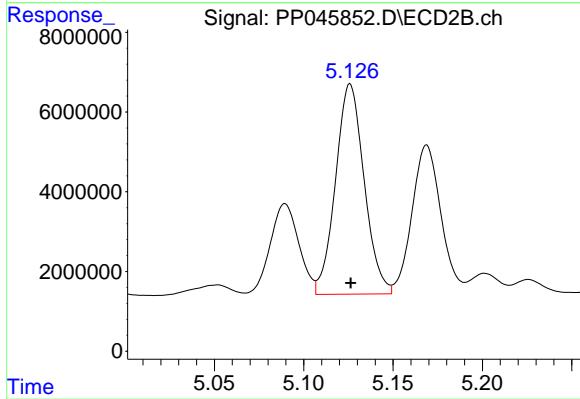
#19 AR-1242-4

R.T.: 4.570 min
 Delta R.T.: 0.000 min
 Response: 35392728
 Conc: 1052.93 ng/ml



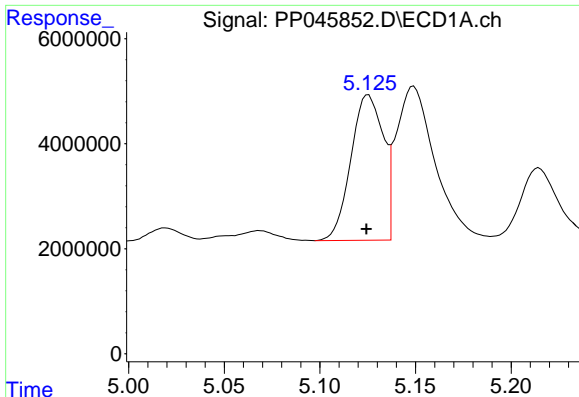
#20 AR-1242-5

R.T.: 6.120 min
 Delta R.T.: 0.000 min
 Response: 61299693
 Conc: 1319.75 ng/ml



#20 AR-1242-5

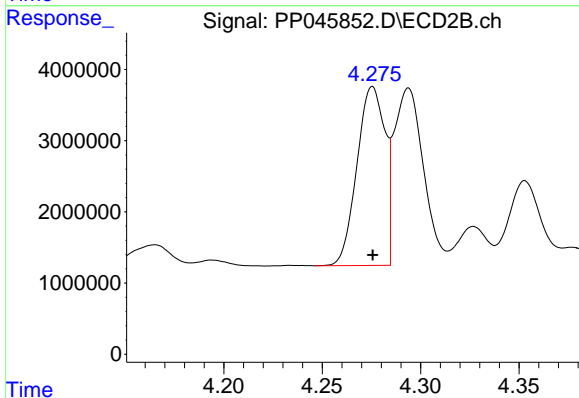
R.T.: 5.126 min
 Delta R.T.: 0.000 min
 Response: 58849650
 Conc: 1339.98 ng/ml



#21 AR-1248-1

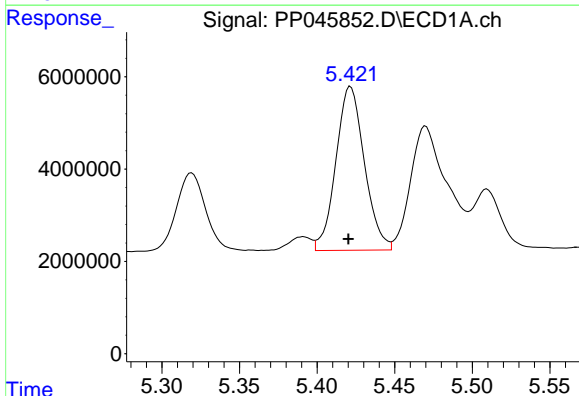
R.T.: 5.125 min
 Delta R.T.: 0.000 min
 Response: 32497951
 Conc: 753.34 ng/ml

Instrument :
 ECD_P
 ClientSampleId :
 AR1248ICC750



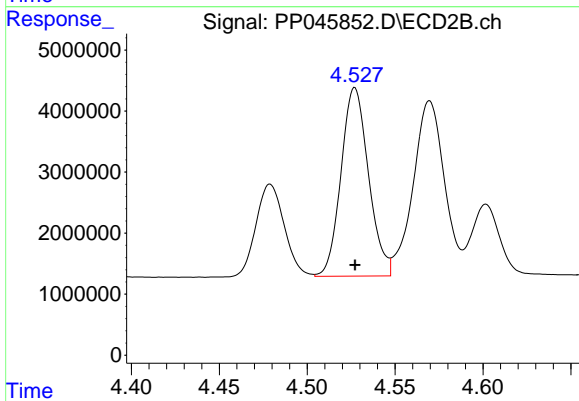
#21 AR-1248-1

R.T.: 4.276 min
 Delta R.T.: 0.000 min
 Response: 2485747
 Conc: 724.80 ng/ml



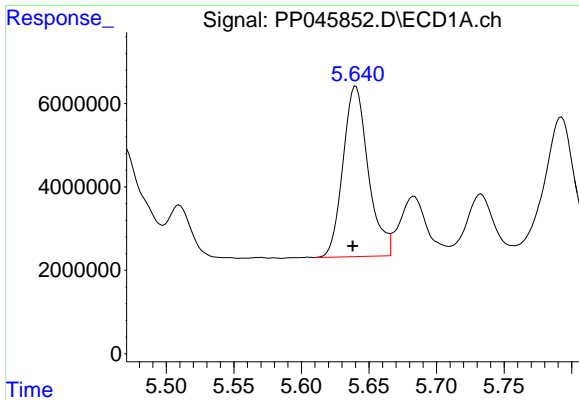
#22 AR-1248-2

R.T.: 5.422 min
 Delta R.T.: 0.002 min
 Response: 45413652
 Conc: 759.66 ng/ml



#22 AR-1248-2

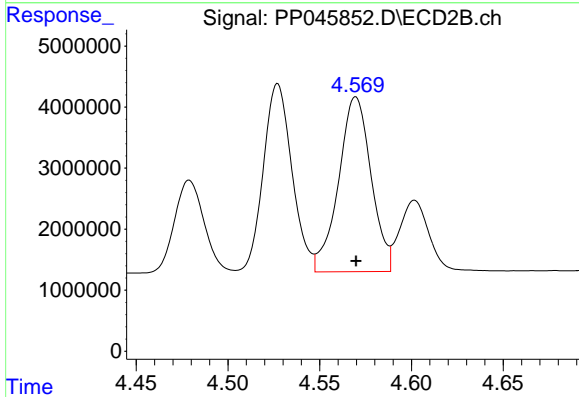
R.T.: 4.527 min
 Delta R.T.: 0.000 min
 Response: 33637303
 Conc: 718.03 ng/ml



#23 AR-1248-3

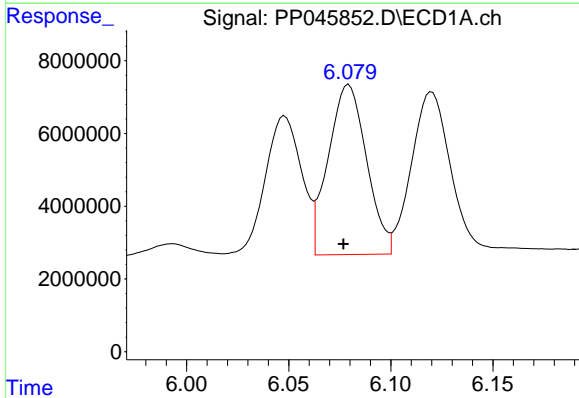
R.T.: 5.640 min
 Delta R.T.: 0.002 min
 Response: 53077906
 Conc: 758.78 ng/ml

Instrument :
 ECD_P
 ClientSampleId :
 AR1248ICC750



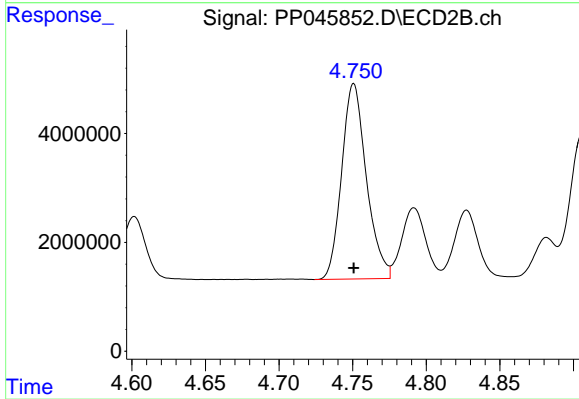
#23 AR-1248-3

R.T.: 4.570 min
 Delta R.T.: 0.000 min
 Response: 35392728
 Conc: 724.10 ng/ml



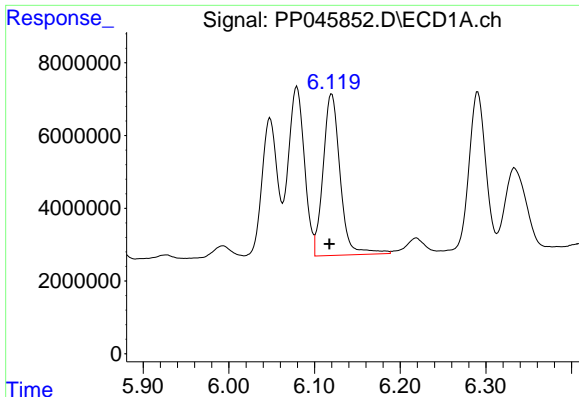
#24 AR-1248-4

R.T.: 6.079 min
 Delta R.T.: 0.003 min
 Response: 60944019
 Conc: 770.82 ng/ml



#24 AR-1248-4

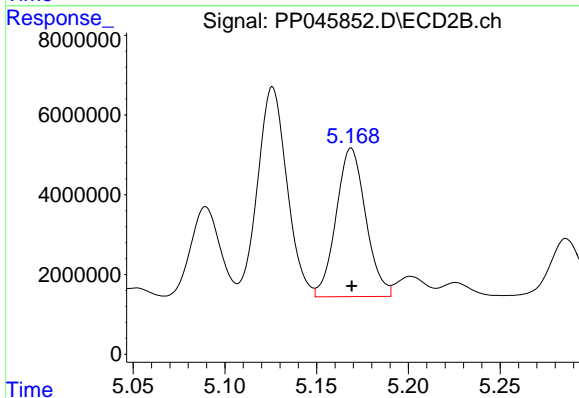
R.T.: 4.751 min
 Delta R.T.: 0.000 min
 Response: 41947798
 Conc: 721.97 ng/ml



#25 AR-1248-5

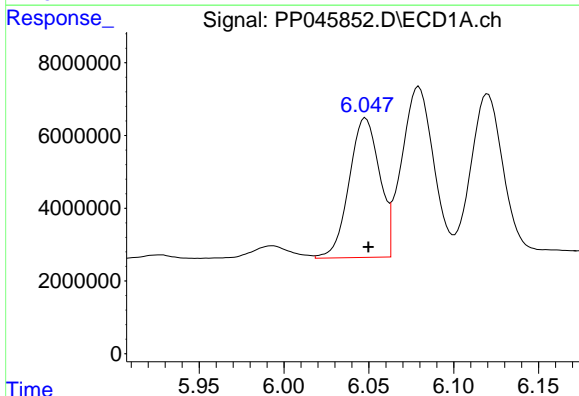
R.T.: 6.120 min
 Delta R.T.: 0.003 min
 Response: 61299693
 Conc: 782.95 ng/ml

Instrument :
 ECD_P
 ClientSampleId :
 AR1248ICC750



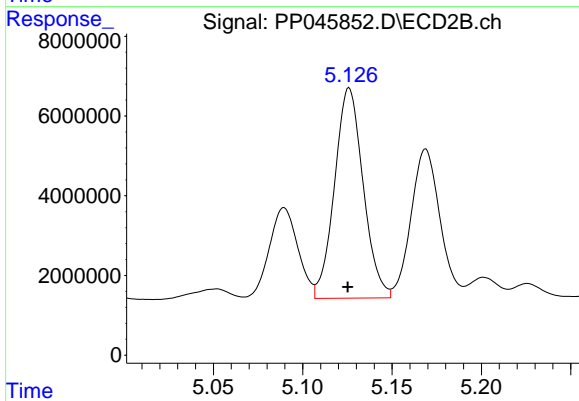
#25 AR-1248-5

R.T.: 5.169 min
 Delta R.T.: 0.000 min
 Response: 41935901
 Conc: 714.47 ng/ml



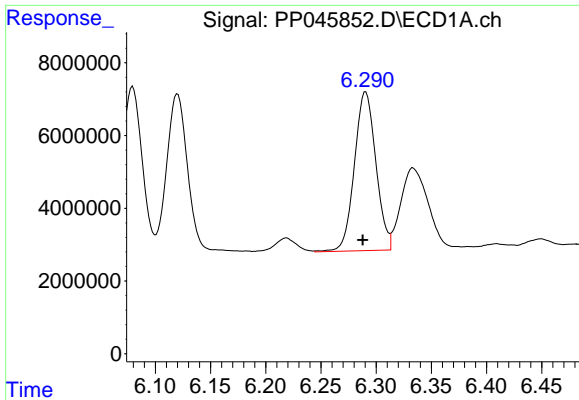
#26 AR-1254-1

R.T.: 6.048 min
 Delta R.T.: -0.002 min
 Response: 47818757
 Conc: 578.58 ng/ml



#26 AR-1254-1

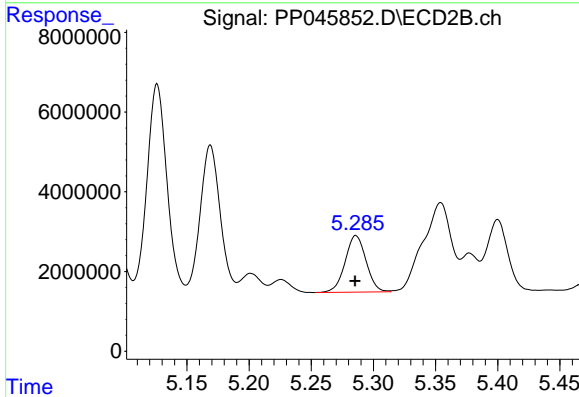
R.T.: 5.126 min
 Delta R.T.: 0.000 min
 Response: 58849650
 Conc: 667.16 ng/ml



#27 AR-1254-2

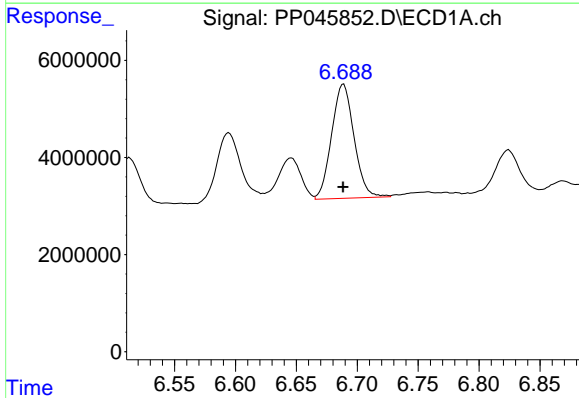
R.T.: 6.291 min
 Delta R.T.: 0.003 min
 Response: 59031548
 Conc: 479.36 ng/ml

Instrument :
 ECD_P
 ClientSampleId :
 AR1248ICC750



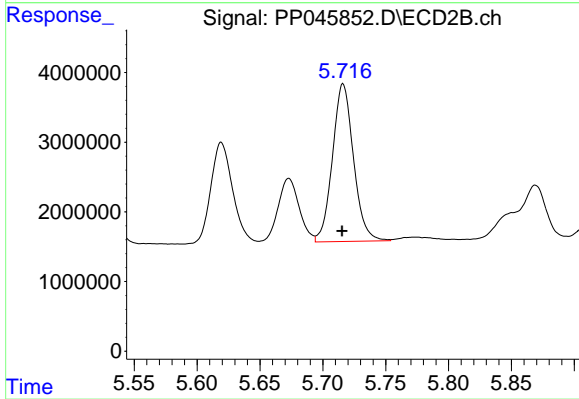
#27 AR-1254-2

R.T.: 5.286 min
 Delta R.T.: 0.000 min
 Response: 16731470
 Conc: 221.69 ng/ml



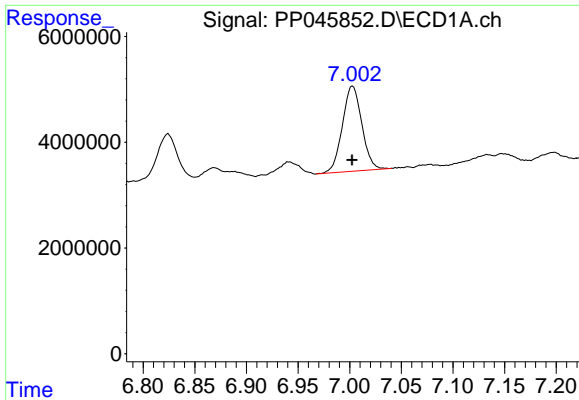
#28 AR-1254-3

R.T.: 6.689 min
 Delta R.T.: 0.000 min
 Response: 30116048
 Conc: 250.54 ng/ml



#28 AR-1254-3

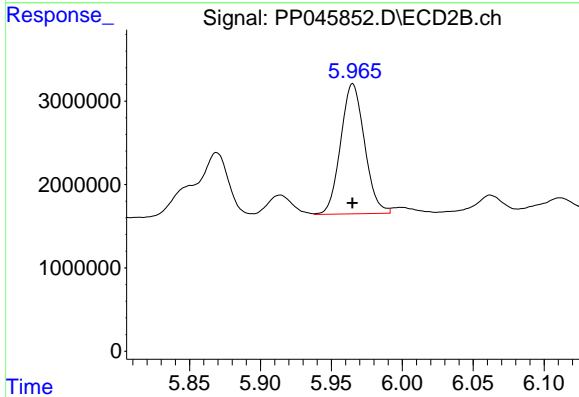
R.T.: 5.716 min
 Delta R.T.: 0.000 min
 Response: 26396294
 Conc: 224.44 ng/ml



#29 AR-1254-4

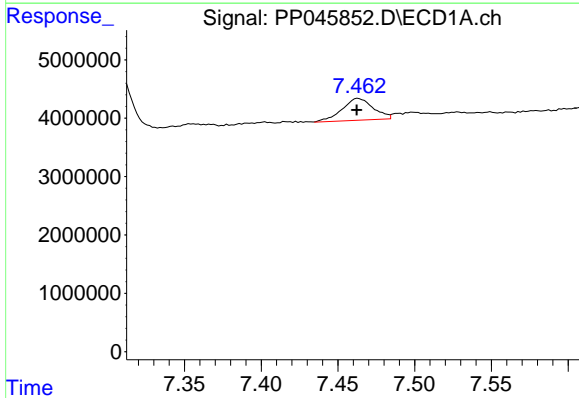
R.T.: 7.003 min
 Delta R.T.: 0.000 min
 Response: 21186769
 Conc: 240.22 ng/ml

Instrument :
 ECD_P
 ClientSampleId :
 AR1248ICC750



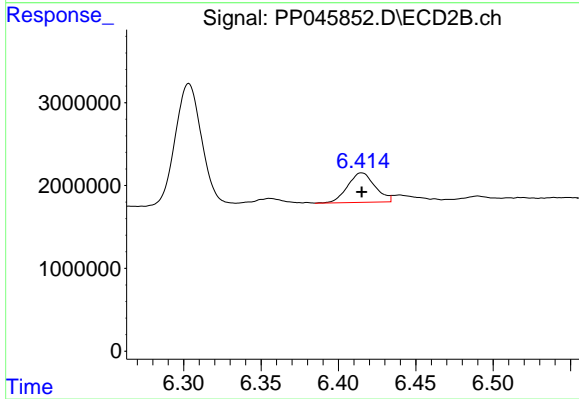
#29 AR-1254-4

R.T.: 5.965 min
 Delta R.T.: 0.000 min
 Response: 18298087
 Conc: 242.47 ng/ml



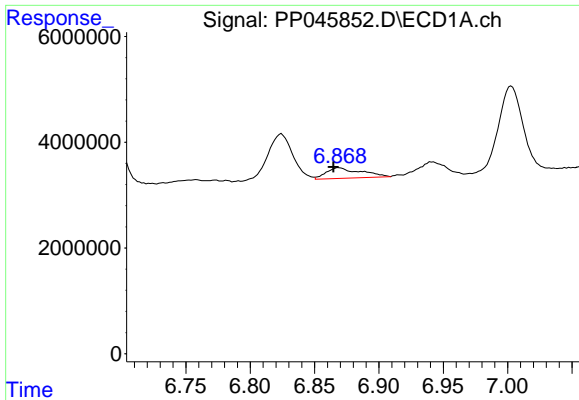
#30 AR-1254-5

R.T.: 7.463 min
 Delta R.T.: 0.000 min
 Response: 5295190
 Conc: 56.53 ng/ml



#30 AR-1254-5

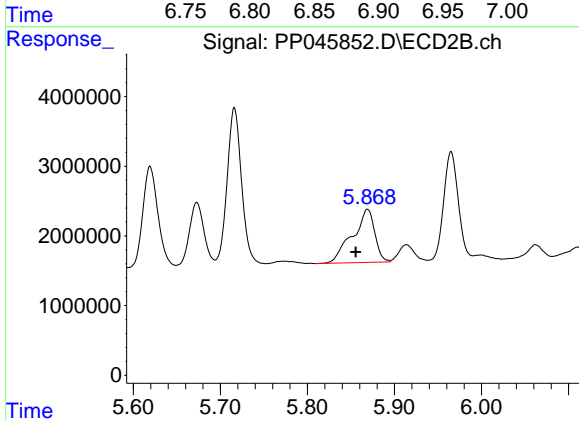
R.T.: 6.415 min
 Delta R.T.: 0.000 min
 Response: 4380835
 Conc: 42.76 ng/ml



#31 AR-1260-1

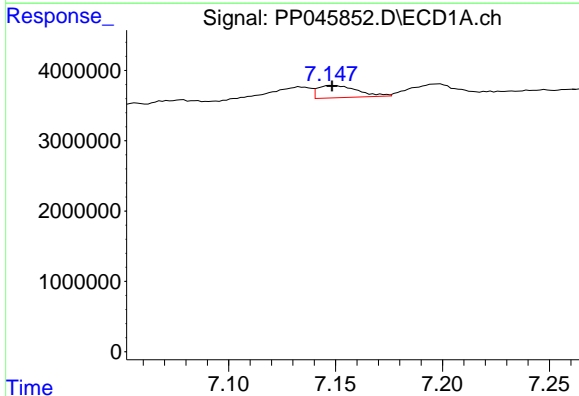
R.T.: 6.869 min
 Delta R.T.: 0.004 min
 Response: 3737527
 Conc: 42.34 ng/ml

Instrument :
 ECD_P
 ClientSampleId :
 AR1248ICC750



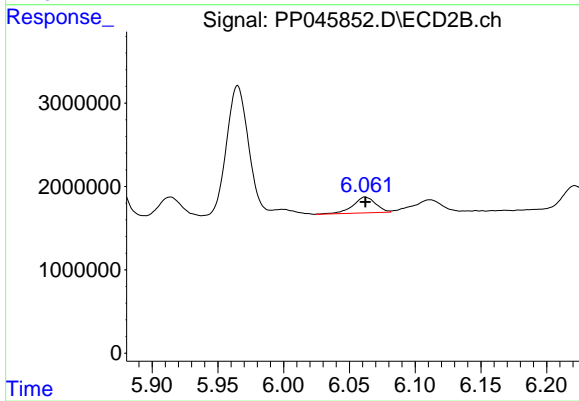
#31 AR-1260-1

R.T.: 5.869 min
 Delta R.T.: 0.014 min
 Response: 13596286
 Conc: 171.78 ng/ml



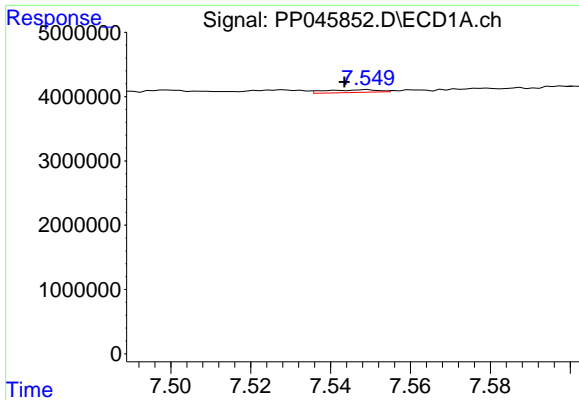
#32 AR-1260-2

R.T.: 7.148 min
 Delta R.T.: 0.000 min
 Response: 2227917
 Conc: 21.75 ng/ml



#32 AR-1260-2

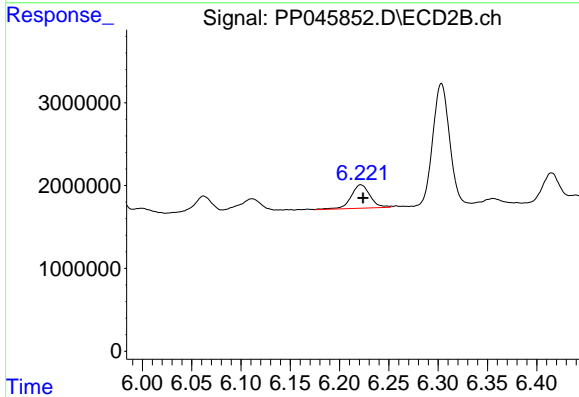
R.T.: 6.062 min
 Delta R.T.: 0.000 min
 Response: 2307915
 Conc: 24.65 ng/ml



#33 AR-1260-3

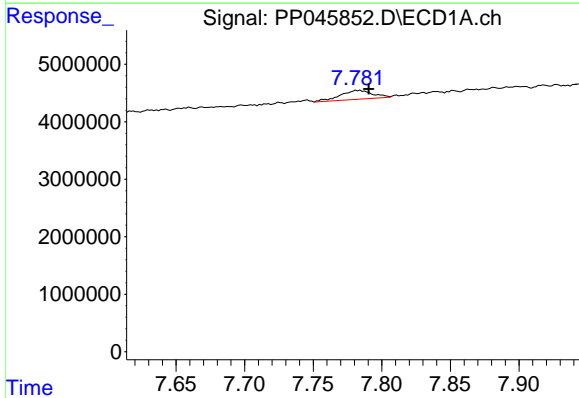
R.T.: 7.549 min
 Delta R.T.: 0.006 min
 Response: 378671
 Conc: 4.60 ng/ml

Instrument :
 ECD_P
 ClientSampleId :
 AR1248ICC750



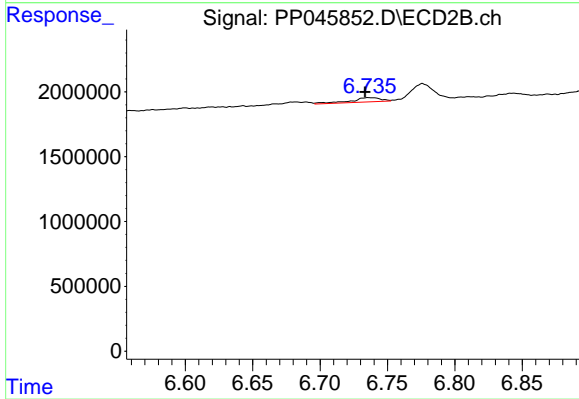
#33 AR-1260-3

R.T.: 6.222 min
 Delta R.T.: -0.002 min
 Response: 3777255
 Conc: 42.64 ng/ml



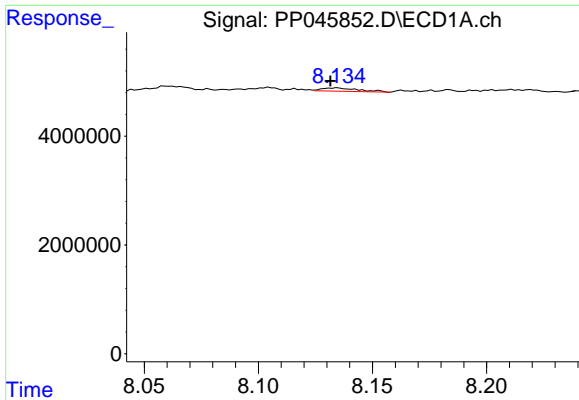
#34 AR-1260-4

R.T.: 7.782 min
 Delta R.T.: -0.008 min
 Response: 2525004
 Conc: 29.80 ng/ml



#34 AR-1260-4

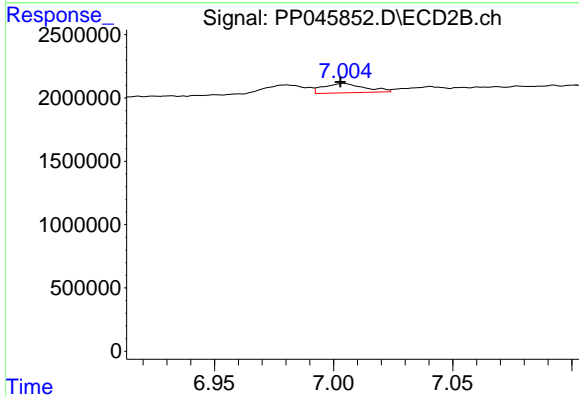
R.T.: 6.736 min
 Delta R.T.: 0.003 min
 Response: 496793
 Conc: 6.92 ng/ml



#35 AR-1260-5

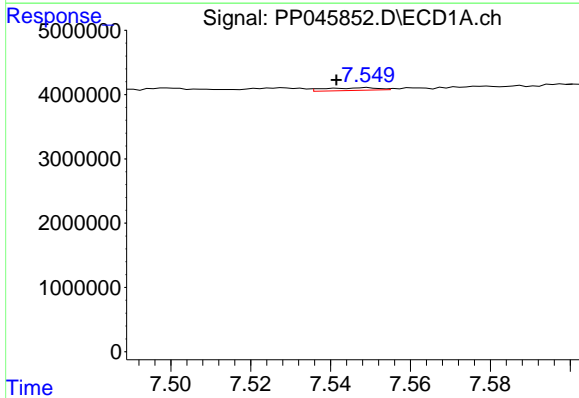
R.T.: 8.135 min
 Delta R.T.: 0.003 min
 Response: 685823
 Conc: 4.18 ng/ml

Instrument :
 ECD_P
 ClientSampleId :
 AR1248ICC750



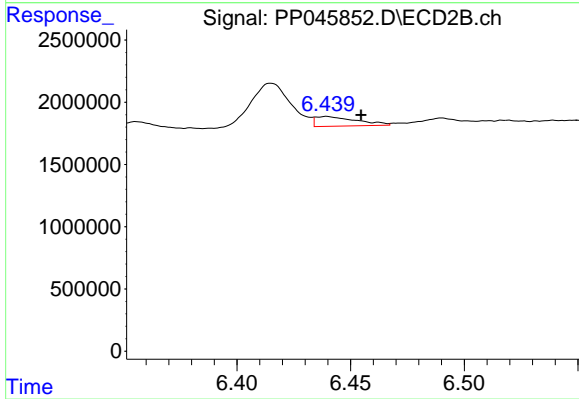
#35 AR-1260-5

R.T.: 7.004 min
 Delta R.T.: 0.001 min
 Response: 889210
 Conc: 5.23 ng/ml



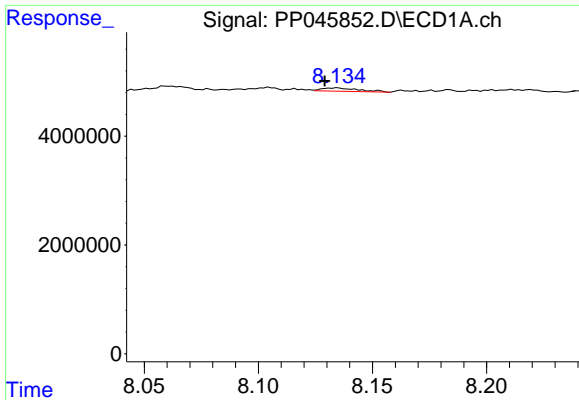
#36 AR-1262-1

R.T.: 7.549 min
 Delta R.T.: 0.008 min
 Response: 378671
 Conc: 3.29 ng/ml



#36 AR-1262-1

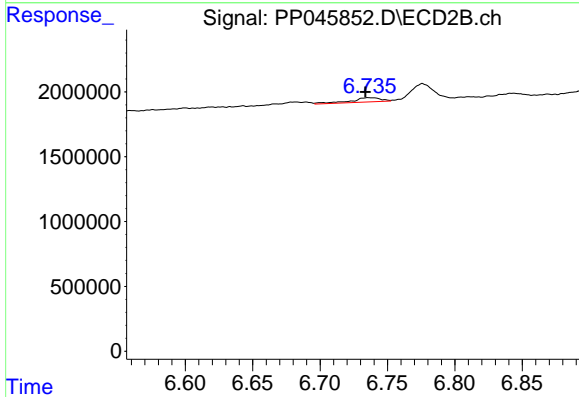
R.T.: 6.439 min
 Delta R.T.: -0.015 min
 Response: 972253
 Conc: 9.19 ng/ml



#37 AR-1262-2

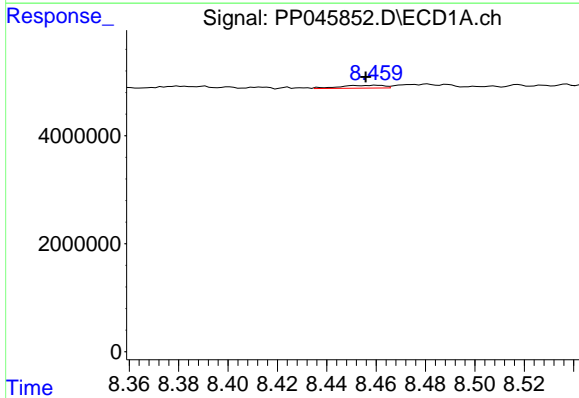
R.T.: 8.135 min
 Delta R.T.: 0.006 min
 Response: 685823
 Conc: 3.83 ng/ml

Instrument :
 ECD_P
 ClientSampleId :
 AR1248ICC750



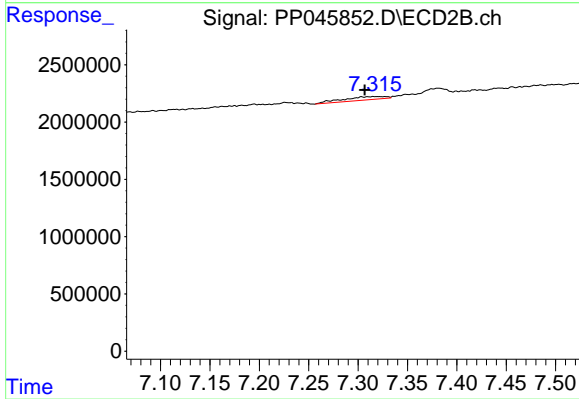
#37 AR-1262-2

R.T.: 6.736 min
 Delta R.T.: 0.003 min
 Response: 496793
 Conc: 5.28 ng/ml



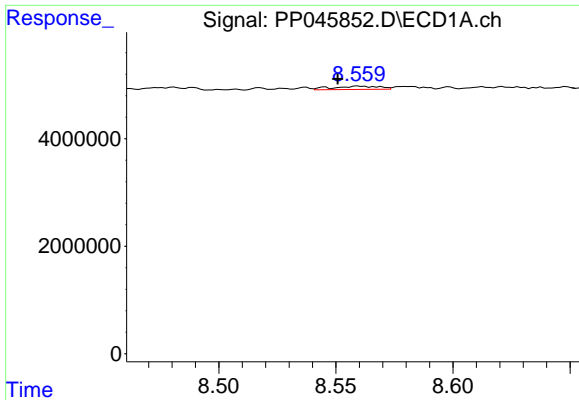
#38 AR-1262-3

R.T.: 8.460 min
 Delta R.T.: 0.004 min
 Response: 654133
 Conc: 5.02 ng/ml



#38 AR-1262-3

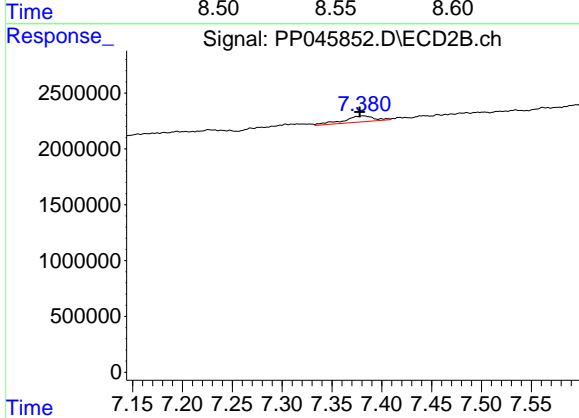
R.T.: 7.316 min
 Delta R.T.: 0.009 min
 Response: 896577
 Conc: 11.71 ng/ml



#39 AR-1262-4

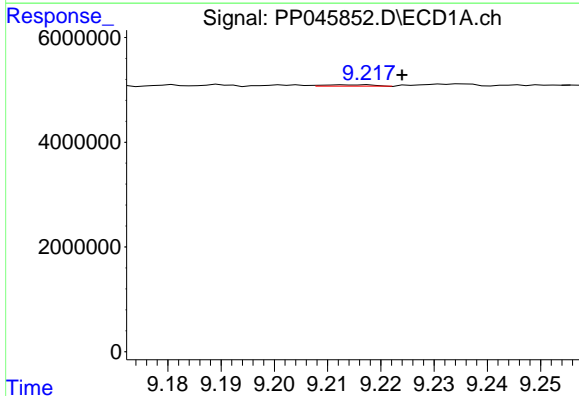
R.T.: 8.560 min
 Delta R.T.: 0.009 min
 Response: 832207
 Conc: 13.21 ng/ml

Instrument :
 ECD_P
 ClientSampleId :
 AR1248ICC750



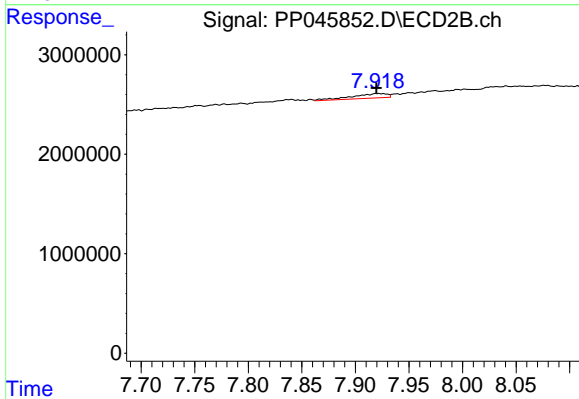
#39 AR-1262-4

R.T.: 7.382 min
 Delta R.T.: 0.004 min
 Response: 1135779
 Conc: 7.98 ng/ml



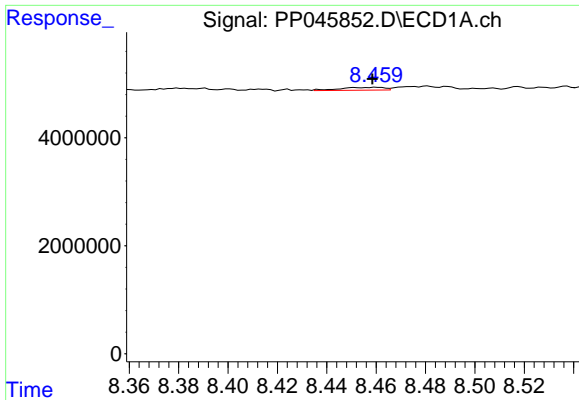
#40 AR-1262-5

R.T.: 9.217 min
 Delta R.T.: -0.007 min
 Response: 160126
 Conc: 2.35 ng/ml



#40 AR-1262-5

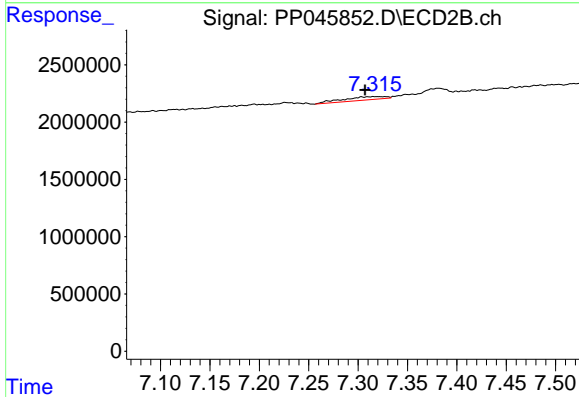
R.T.: 7.921 min
 Delta R.T.: 0.001 min
 Response: 1039915
 Conc: 14.84 ng/ml



#41 AR-1268-1

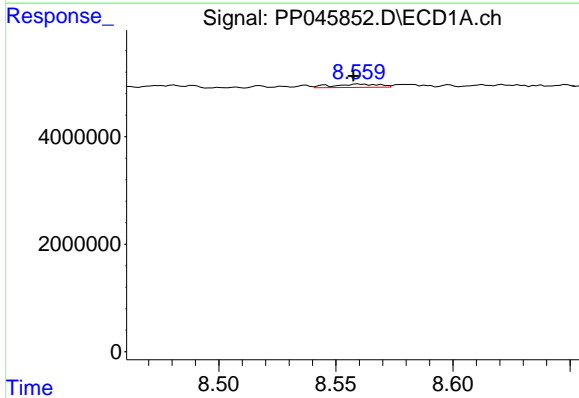
R.T.: 8.460 min
 Delta R.T.: 0.002 min
 Response: 654133
 Conc: 2.41 ng/ml

Instrument :
 ECD_P
 ClientSampleId :
 AR1248ICC750



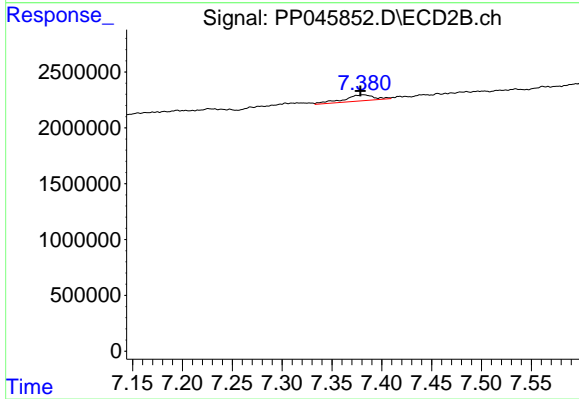
#41 AR-1268-1

R.T.: 7.316 min
 Delta R.T.: 0.009 min
 Response: 896577
 Conc: 4.04 ng/ml



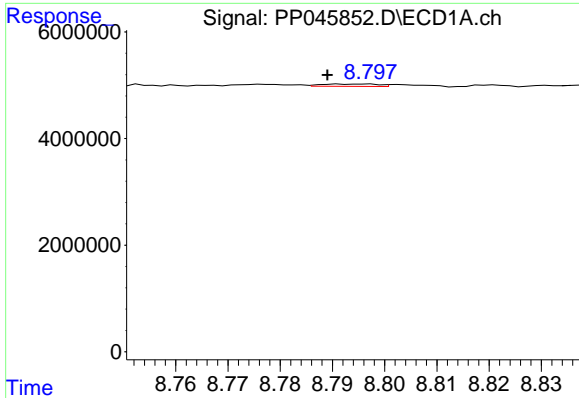
#42 AR-1268-2

R.T.: 8.560 min
 Delta R.T.: 0.002 min
 Response: 832207
 Conc: 3.29 ng/ml



#42 AR-1268-2

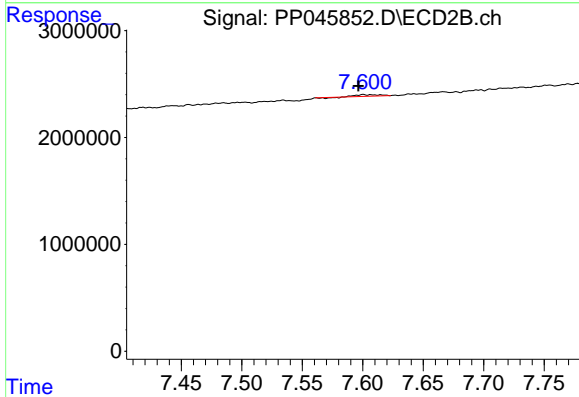
R.T.: 7.382 min
 Delta R.T.: 0.003 min
 Response: 1135779
 Conc: 5.61 ng/ml



#43 AR-1268-3

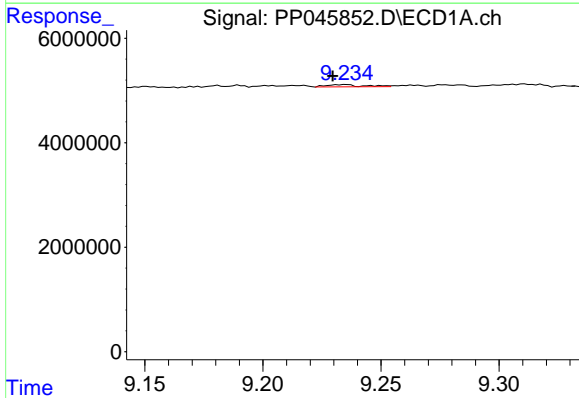
R.T.: 8.792 min
 Delta R.T.: 0.003 min
 Response: 326590
 Conc: 1.44 ng/ml

Instrument : ECD_P
 ClientSampleId : AR1248ICC750



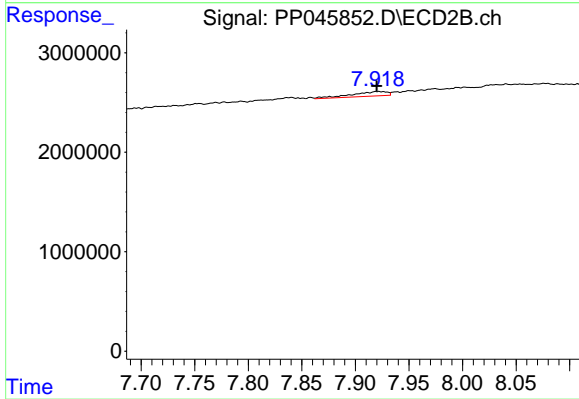
#43 AR-1268-3

R.T.: 7.600 min
 Delta R.T.: 0.004 min
 Response: 191064
 Conc: 1.12 ng/ml



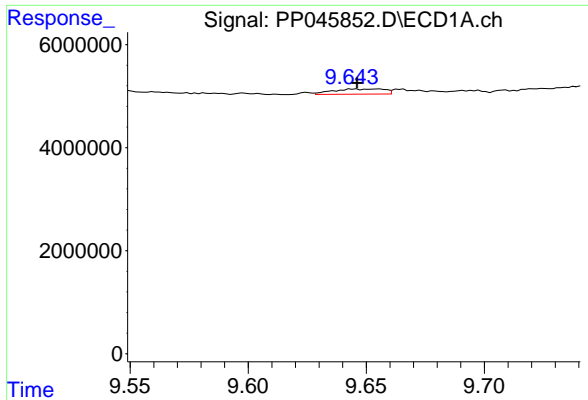
#44 AR-1268-4

R.T.: 9.235 min
 Delta R.T.: 0.006 min
 Response: 435070
 Conc: 4.82 ng/ml



#44 AR-1268-4

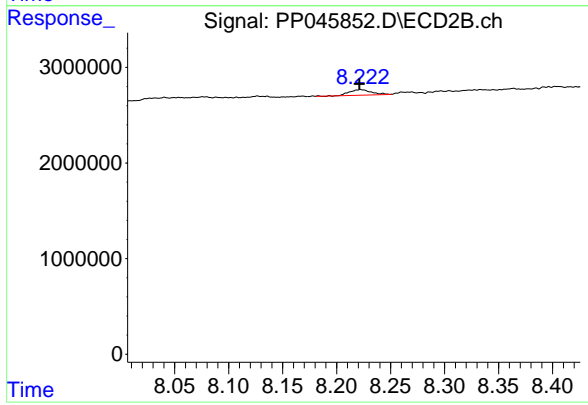
R.T.: 7.921 min
 Delta R.T.: 0.000 min
 Response: 1039915
 Conc: 13.18 ng/ml



#45 AR-1268-5

R.T.: 9.655 min
 Delta R.T.: 0.009 min
 Response: 1521314
 Conc: 2.24 ng/ml

Instrument :
 ECD_P
 ClientSampleId :
 AR1248ICC750



#45 AR-1268-5

R.T.: 8.222 min
 Delta R.T.: 0.001 min
 Response: 814309
 Conc: 1.47 ng/ml