

Data Path : Z:\pestpcbsrv\HPCHEM1\ECD\_P\Data\PP041222\  
 Data File : PP045853.D  
 Signal(s) : Signal #1: ECD1A.ch Signal #2: ECD2B.ch  
 Acq On : 11 Apr 2022 23:27  
 Operator : YP\AJ  
 Sample : AR1248ICC500  
 Misc :  
 ALS Vial : 17 Sample Multiplier: 1

Instrument :  
 ECD\_P  
 ClientSampleId :  
 AR1248ICC500

Integration File signal 1: autoint1.e  
 Integration File signal 2: autoint2.e  
 Quant Time: Apr 12 06:54:55 2022  
 Quant Method : Z:\pestpcbsrv\HPCHEM1\ECD\_P\methods\PP041222.M  
 Quant Title : GC EXTRACTABLES  
 QLast Update : Tue Apr 12 05:31:12 2022  
 Response via : Initial Calibration  
 Integrator: ChemStation

Volume Inj. : 2 µl  
 Signal #1 Phase : ZB-MR1 Signal #2 Phase: ZB-MR2  
 Signal #1 Info : 30Mx0.32mmx 0.50µ Signal #2 Info : 30M x 0.32mm x 0.25µm

Compound	RT#1	RT#2	Resp#1	Resp#2	ng/ml	ng/ml
System Monitoring Compounds						
1) SA Tetrachlo...	3.875	3.138	126.3E6	83628781	51.363	52.631
2) SA Decachlor...	9.976	8.477	76684123	73261454	46.714	51.400
Target Compounds						
3) L1 AR-1016-1	5.123	4.276	20915080	17082007	272.794	290.872
4) L1 AR-1016-2	5.147	4.294	26551835	17676228	229.613	211.577
5) L1 AR-1016-3	5.212	4.479	12397093	11538059	179.930	261.197 #
6) L1 AR-1016-4	5.317	4.527	14342195	22953744	243.731	643.238 #
7) L1 AR-1016-5	5.638	4.751	33951473	28581243	615.674	601.638
8) L2 AR-1221-1	4.098	3.363	150092	291585	5.761	14.353 #
9) L2 AR-1221-2	4.198	3.451	1555465	1303921	81.791	85.788
10) L2 AR-1221-3	4.274	3.531	2045510	1446148	33.277	31.336
11) L3 AR-1232-1	4.274	3.531	2045510	1446148	36.043	34.086
12) L3 AR-1232-2	4.835	4.294	9427790	17676228	353.538	441.028
13) L3 AR-1232-3	5.147	4.479	26551835	11538059	493.270	536.964
14) L3 AR-1232-4	5.317	4.570	14342195	24127158	542.168	1273.485 #
15) L3 AR-1232-5	5.419	4.751	28813657	28581243	1563.144	1336.563
16) L4 AR-1242-1	5.123	4.276	20915080	17082007	349.959	369.200
17) L4 AR-1242-2	5.147	4.294	26551835	17676228	295.781	272.590
18) L4 AR-1242-3	5.212	4.479	12397093	11538059	223.477	333.444 #
19) L4 AR-1242-4	5.317	4.570	14342195	24127158	316.039	717.782 #
20) L4 AR-1242-5	6.117	5.126	35992515	40173135	774.900	914.725
21) L5 AR-1248-1	5.123	4.276	20915080	17082007	484.835	498.116
22) L5 AR-1248-2	5.419	4.527	28813657	22953744	481.981	489.974
23) L5 AR-1248-3	5.638	4.570	33951473	24127158	485.353	493.614
24) L5 AR-1248-4	6.077	4.751	36903489	28581243	466.757	491.919
25) L5 AR-1248-5	6.117	5.169	35992515	28843494	459.714	491.412
26) L6 AR-1254-1	6.046	5.126	27991642	40173135	338.681	455.433 #
27) L6 AR-1254-2	6.288	5.286	35504700	11680020	288.314	154.759 #
28) L6 AR-1254-3	6.685	5.716	18321519	18065375	152.417	153.604
29) L6 AR-1254-4	6.999	5.965	12995346	12447401	147.346	164.943
30) L6 AR-1254-5	7.458	6.415	3161991	3011364	33.754	29.393
31) L7 AR-1260-1	6.867	5.869	1969481	9306589	22.311	117.586 #
32) L7 AR-1260-2	7.146	6.063	3102908	1691405	30.288	18.069 #
33) L7 AR-1260-3	7.539	6.221	315823	2963033	3.834	33.449 #
34) L7 AR-1260-4	7.804	6.737	148331	196501	1.750	2.737 #
35) L7 AR-1260-5	8.136	7.001	644727	677885	3.926	3.991
36) L8 AR-1262-1	7.539	6.438f	315823	623611	2.745	5.896 #
37) L8 AR-1262-2	8.136	6.737	644727	196501	3.599	2.087 #
38) L8 AR-1262-3	8.455	7.310	272364	515949	2.090	6.739 #
39) L8 AR-1262-4	8.552	7.379	140534	749458	2.231	5.268 #
40) L8 AR-1262-5	9.224	7.923	270849	914565	3.967	13.055 #
41) L9 AR-1268-1	8.455	7.310	272364	515949	1.002	2.326 #

Data Path : Z:\pestpcbsrv\HPCHEM1\ECD\_P\Data\PP041222\  
 Data File : PP045853.D  
 Signal(s) : Signal #1: ECD1A.ch Signal #2: ECD2B.ch  
 Acq On : 11 Apr 2022 23:27  
 Operator : YP\AJ  
 Sample : AR1248ICC500  
 Misc :  
 ALS Vial : 17 Sample Multiplier: 1

Instrument :  
 ECD\_P  
 ClientSampleId :  
 AR1248ICC500

Integration File signal 1: autoint1.e  
 Integration File signal 2: autoint2.e  
 Quant Time: Apr 12 06:54:55 2022  
 Quant Method : Z:\pestpcbsrv\HPCHEM1\ECD\_P\methods\PP041222.M  
 Quant Title : GC EXTRACTABLES  
 QLast Update : Tue Apr 12 05:31:12 2022  
 Response via : Initial Calibration  
 Integrator: ChemStation

Volume Inj. : 2 µl  
 Signal #1 Phase : ZB-MR1 Signal #2 Phase: ZB-MR2  
 Signal #1 Info : 30Mx0.32mmx 0.50µ Signal #2 Info : 30M x 0.32mm x 0.25µm

	Compound	RT#1	RT#2	Resp#1	Resp#2	ng/ml	ng/ml
42)	L9 AR-1268-2	8.561	7.379	172810	749458	0.683	3.699 #
43)	L9 AR-1268-3	8.800	7.606	97629	369103	0.430	2.167 #
44)	L9 AR-1268-4	9.224	7.923	270849	914565	3.001	11.588 #
45)	L9 AR-1268-5	9.647	8.219	857921	694121	1.262	1.252

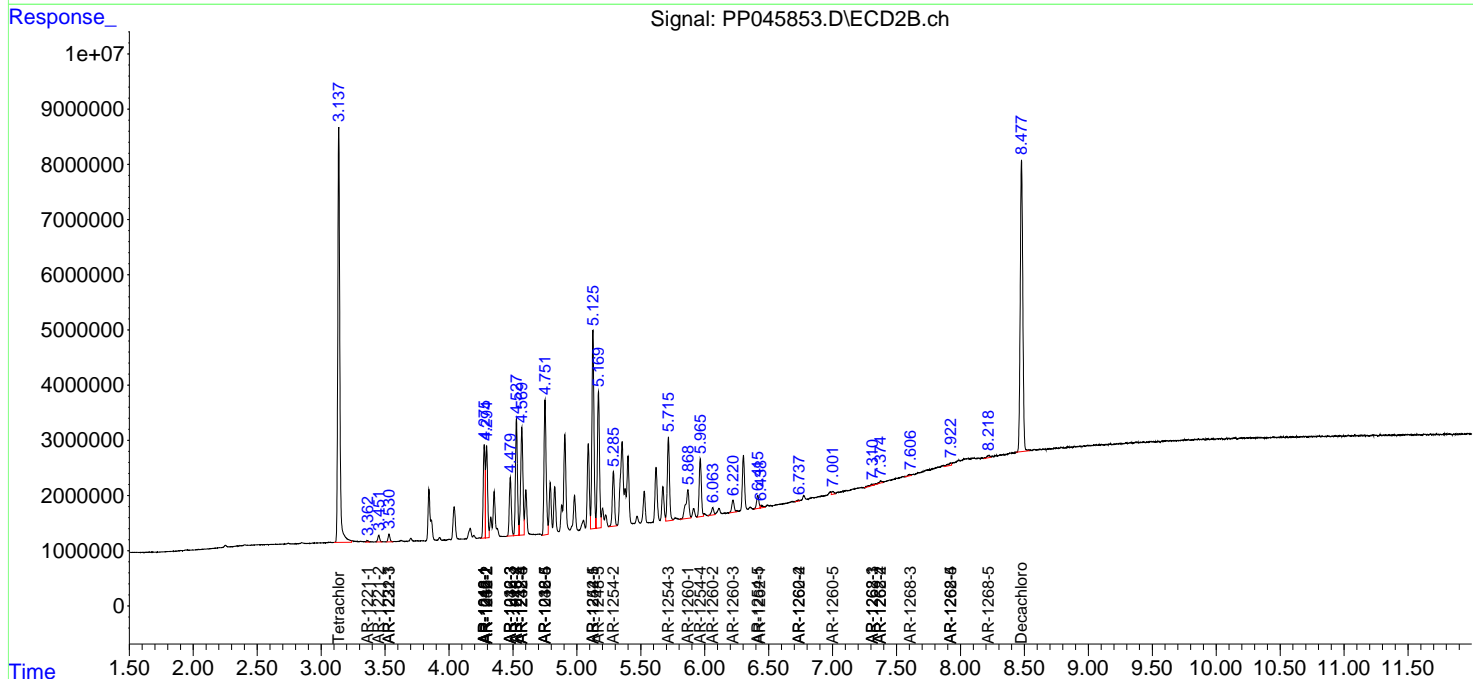
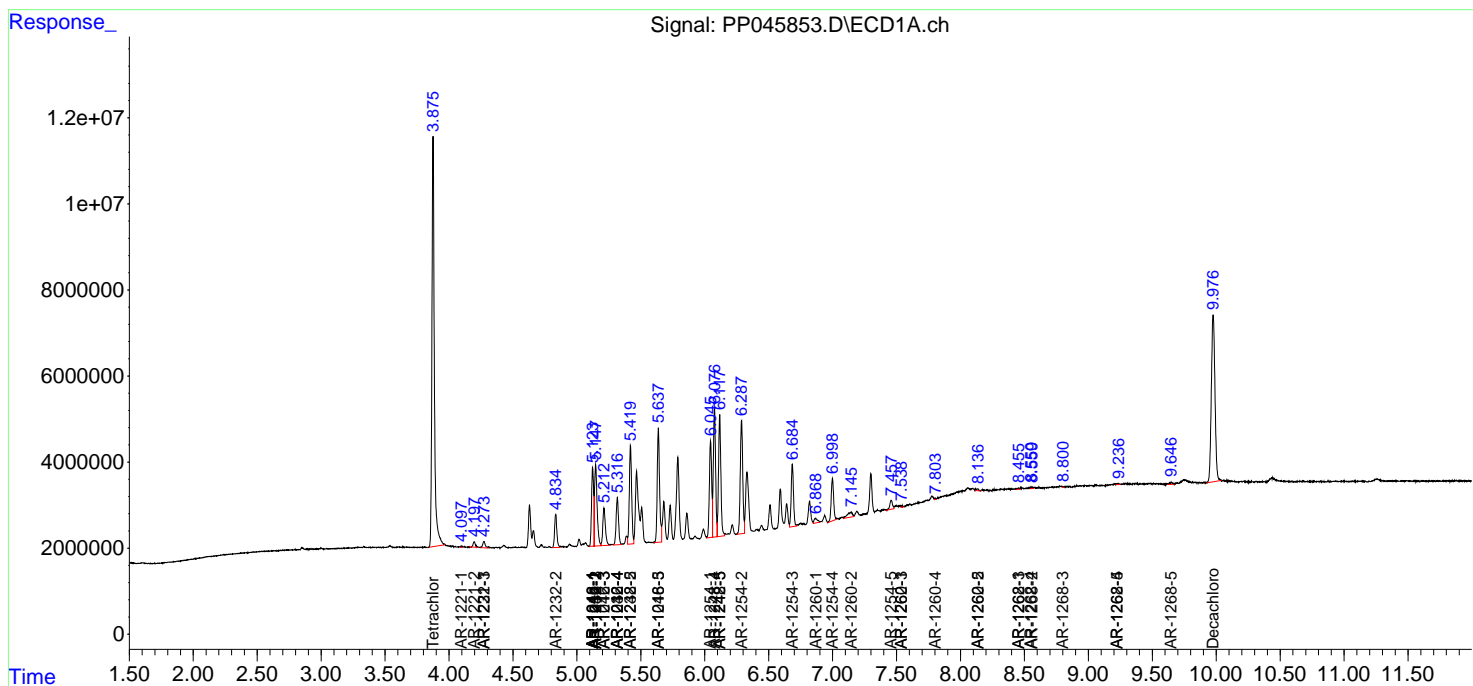
(f)=RT Delta > 1/2 Window (#)=Amounts differ by > 25% (m)=manual int.

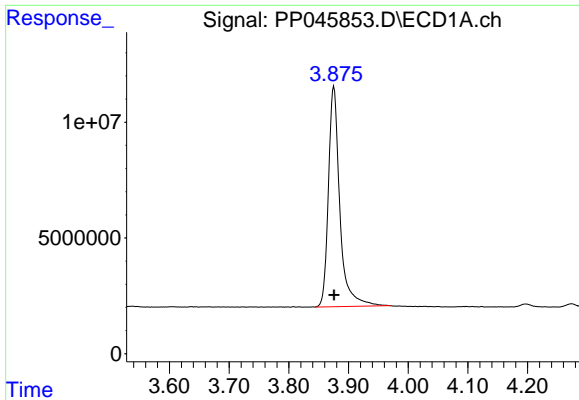
Data Path : Z:\pestpcbsrv\HPCHEM1\ECD\_P\Data\PP041222\  
 Data File : PP045853.D  
 Signal(s) : Signal #1: ECD1A.ch Signal #2: ECD2B.ch  
 Acq On : 11 Apr 2022 23:27  
 Operator : YP\AJ  
 Sample : AR1248ICC500  
 Misc :  
 ALS Vial : 17 Sample Multiplier: 1

Instrument :  
 ECD\_P  
 ClientSampleId :  
 AR1248ICC500

Integration File signal 1: autoint1.e  
 Integration File signal 2: autoint2.e  
 Quant Time: Apr 12 06:54:55 2022  
 Quant Method : Z:\pestpcbsrv\HPCHEM1\ECD\_P\methods\PP041222.M  
 Quant Title : GC EXTRACTABLES  
 QLast Update : Tue Apr 12 05:31:12 2022  
 Response via : Initial Calibration  
 Integrator: ChemStation

Volume Inj. : 2 µl  
 Signal #1 Phase : ZB-MR1 Signal #2 Phase: ZB-MR2  
 Signal #1 Info : 30Mx0.32mmx 0.50µ Signal #2 Info : 30M x 0.32mm x 0.25µm

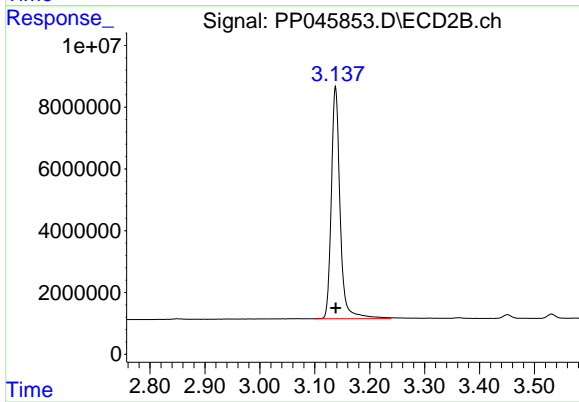




#1 Tetrachloro-m-xylene

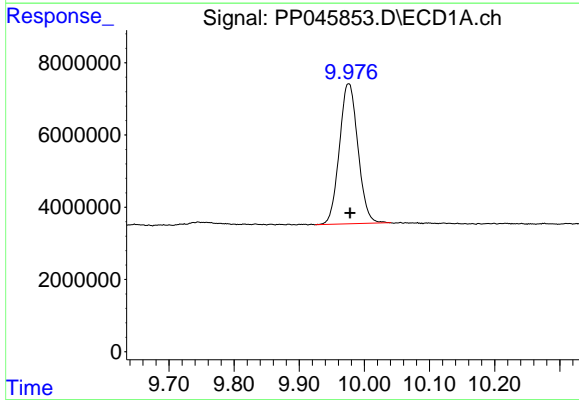
R.T.: 3.875 min  
Delta R.T.: 0.000 min  
Response: 126337237  
Conc: 51.36 ng/ml

Instrument :  
ECD\_P  
ClientSampleId :  
AR1248ICC500



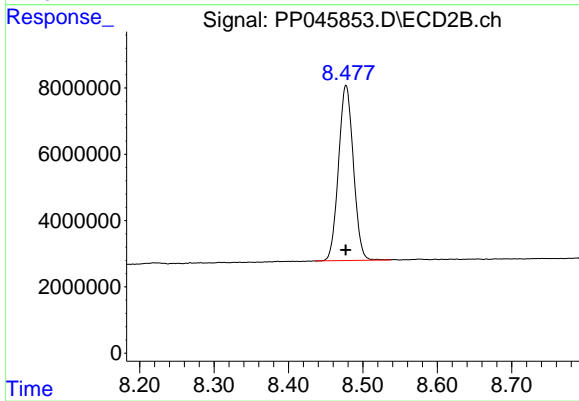
#1 Tetrachloro-m-xylene

R.T.: 3.138 min  
Delta R.T.: 0.000 min  
Response: 83628781  
Conc: 52.63 ng/ml



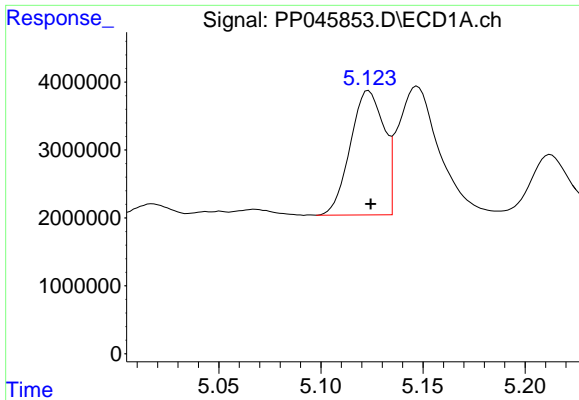
#2 Decachlorobiphenyl

R.T.: 9.976 min  
Delta R.T.: -0.002 min  
Response: 76684123  
Conc: 46.71 ng/ml



#2 Decachlorobiphenyl

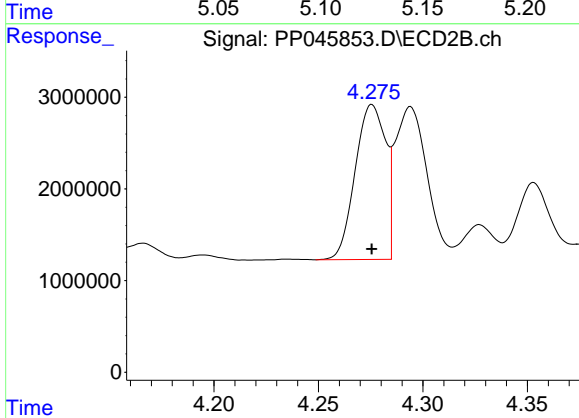
R.T.: 8.477 min  
Delta R.T.: 0.000 min  
Response: 73261454  
Conc: 51.40 ng/ml



#3 AR-1016-1

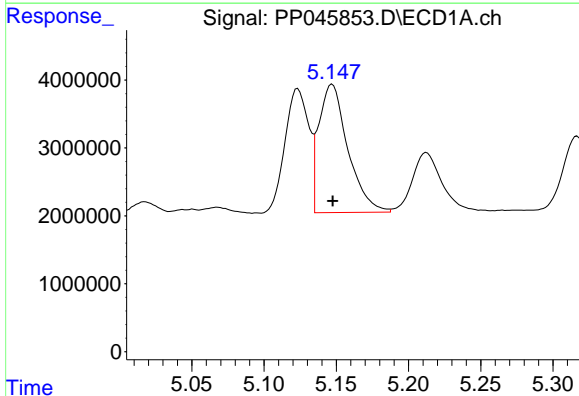
R.T.: 5.123 min  
 Delta R.T.: 0.000 min  
 Response: 20915080  
 Conc: 272.79 ng/ml

Instrument :  
 ECD\_P  
 ClientSampleId :  
 AR1248ICC500



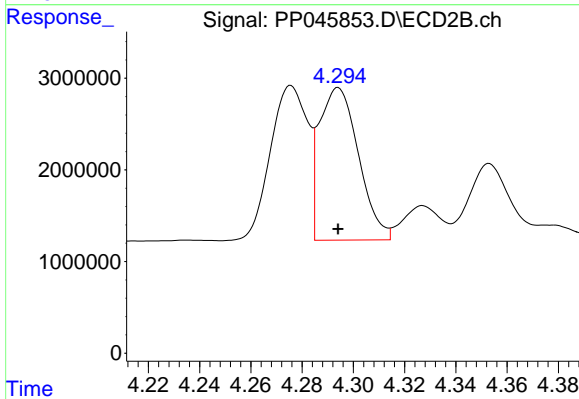
#3 AR-1016-1

R.T.: 4.276 min  
 Delta R.T.: 0.000 min  
 Response: 17082007  
 Conc: 290.87 ng/ml



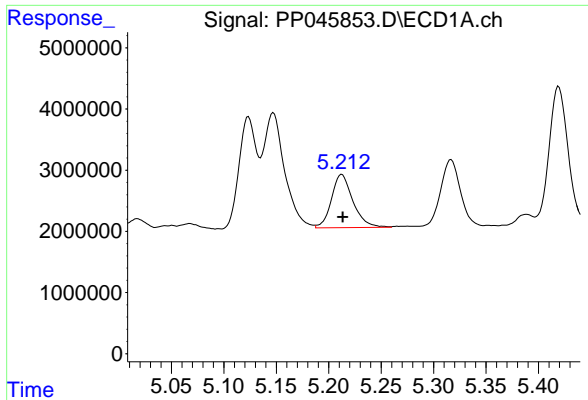
#4 AR-1016-2

R.T.: 5.147 min  
 Delta R.T.: 0.000 min  
 Response: 26551835  
 Conc: 229.61 ng/ml



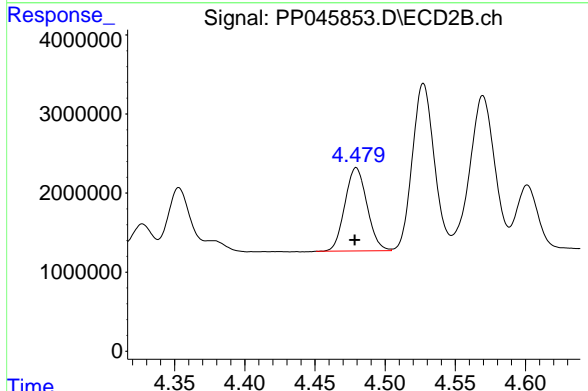
#4 AR-1016-2

R.T.: 4.294 min  
 Delta R.T.: 0.000 min  
 Response: 17676228  
 Conc: 211.58 ng/ml

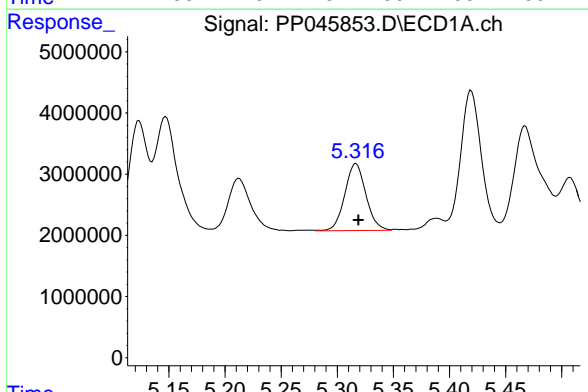


#5 AR-1016-3  
 R.T.: 5.212 min  
 Delta R.T.: 0.000 min  
 Response: 12397093  
 Conc: 179.93 ng/ml

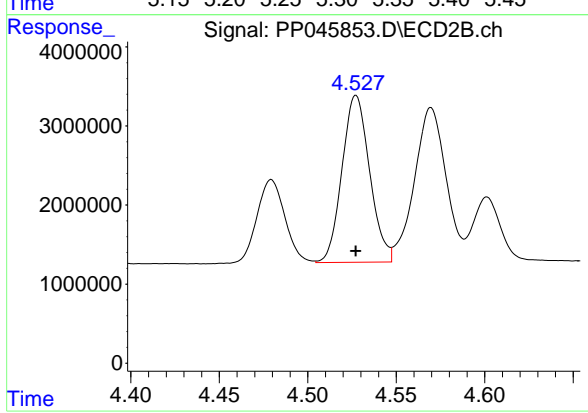
Instrument :  
 ECD\_P  
 ClientSampleId :  
 AR1248ICC500



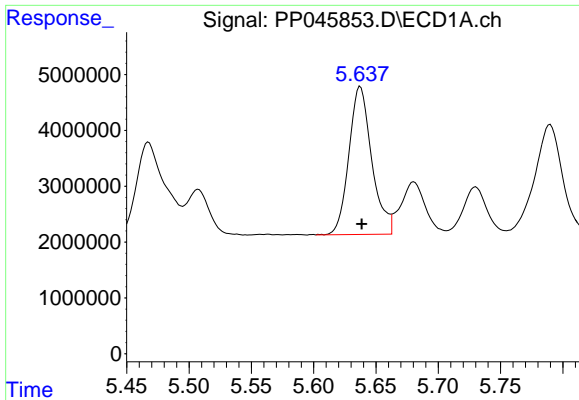
#5 AR-1016-3  
 R.T.: 4.479 min  
 Delta R.T.: 0.001 min  
 Response: 11538059  
 Conc: 261.20 ng/ml



#6 AR-1016-4  
 R.T.: 5.317 min  
 Delta R.T.: -0.002 min  
 Response: 14342195  
 Conc: 243.73 ng/ml



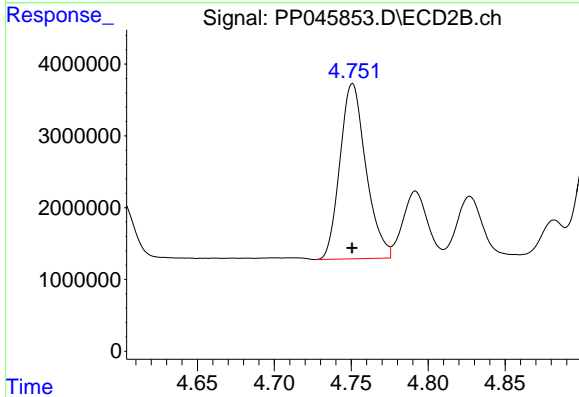
#6 AR-1016-4  
 R.T.: 4.527 min  
 Delta R.T.: 0.000 min  
 Response: 22953744  
 Conc: 643.24 ng/ml



#7 AR-1016-5

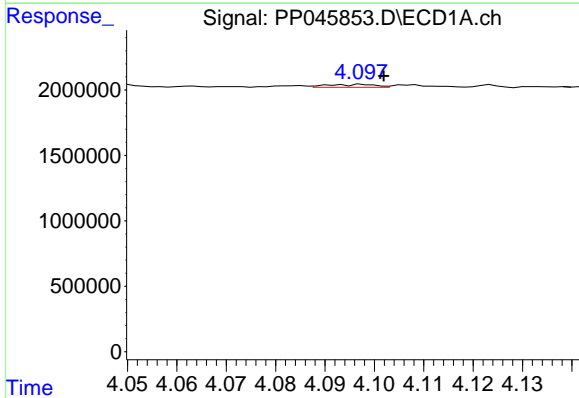
R.T.: 5.638 min  
 Delta R.T.: 0.000 min  
 Response: 33951473  
 Conc: 615.67 ng/ml

Instrument :  
 ECD\_P  
 ClientSampleId :  
 AR1248ICC500



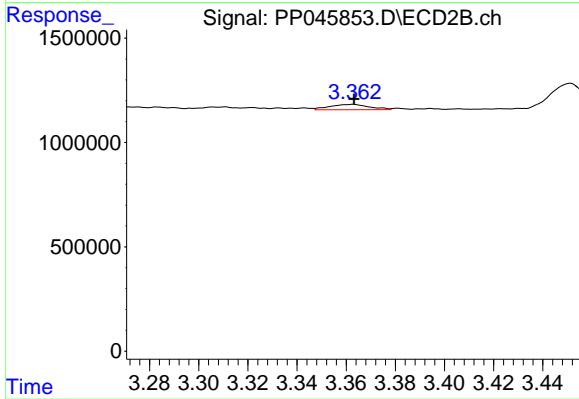
#7 AR-1016-5

R.T.: 4.751 min  
 Delta R.T.: 0.000 min  
 Response: 28581243  
 Conc: 601.64 ng/ml



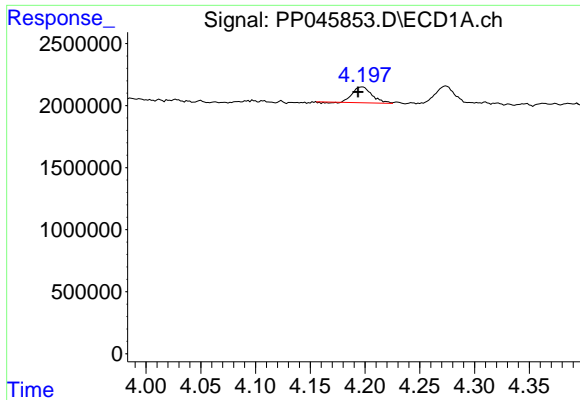
#8 AR-1221-1

R.T.: 4.098 min  
 Delta R.T.: -0.004 min  
 Response: 150092  
 Conc: 5.76 ng/ml



#8 AR-1221-1

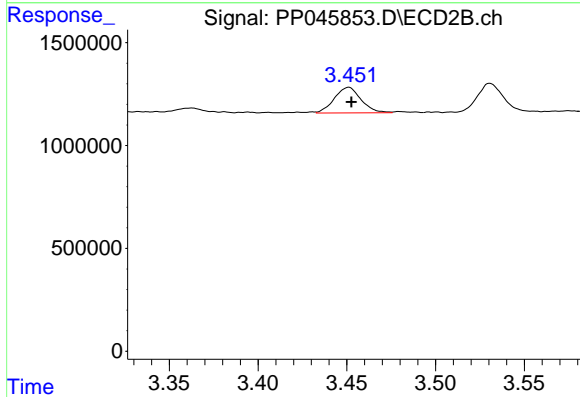
R.T.: 3.363 min  
 Delta R.T.: 0.000 min  
 Response: 291585  
 Conc: 14.35 ng/ml



#9 AR-1221-2

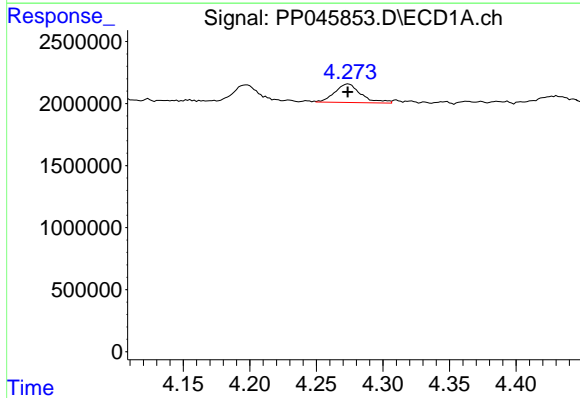
R.T.: 4.198 min  
 Delta R.T.: 0.004 min  
 Response: 1555465  
 Conc: 81.79 ng/ml

Instrument :  
 ECD\_P  
 ClientSampleId :  
 AR1248ICC500



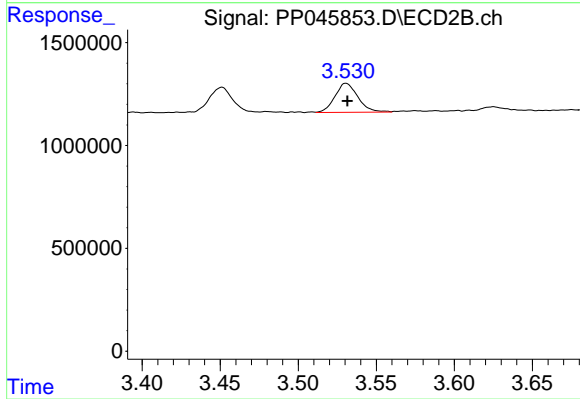
#9 AR-1221-2

R.T.: 3.451 min  
 Delta R.T.: -0.001 min  
 Response: 1303921  
 Conc: 85.79 ng/ml



#10 AR-1221-3

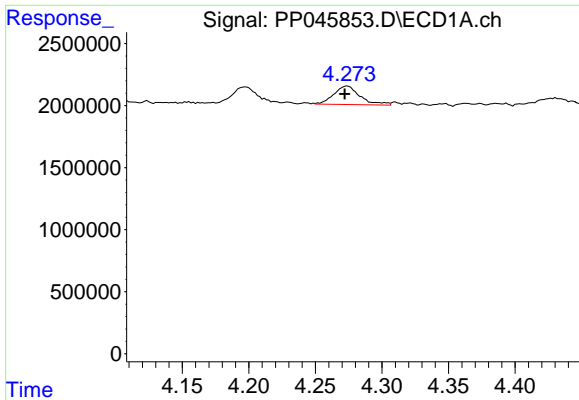
R.T.: 4.274 min  
 Delta R.T.: 0.000 min  
 Response: 2045510  
 Conc: 33.28 ng/ml



#10 AR-1221-3

R.T.: 3.531 min  
 Delta R.T.: -0.001 min  
 Response: 1446148  
 Conc: 31.34 ng/ml

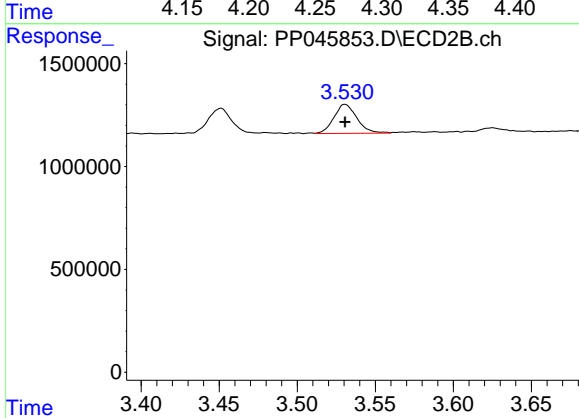




#11 AR-1232-1

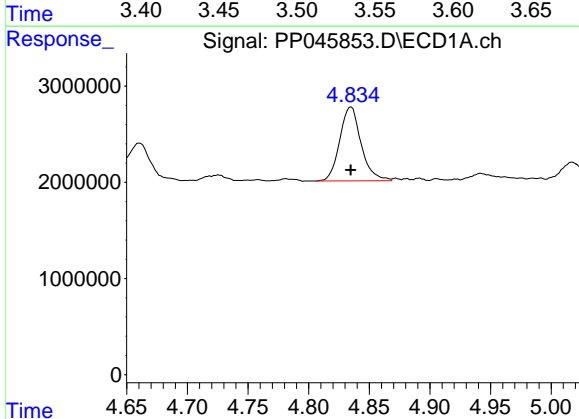
R.T.: 4.274 min  
 Delta R.T.: 0.002 min  
 Response: 2045510  
 Conc: 36.04 ng/ml

Instrument :  
 ECD\_P  
 ClientSampleId :  
 AR1248ICC500



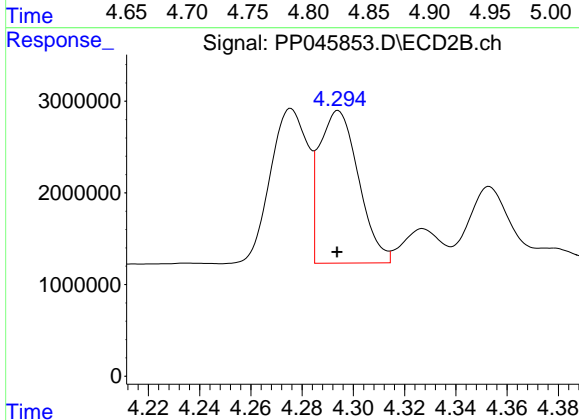
#11 AR-1232-1

R.T.: 3.531 min  
 Delta R.T.: 0.000 min  
 Response: 1446148  
 Conc: 34.09 ng/ml



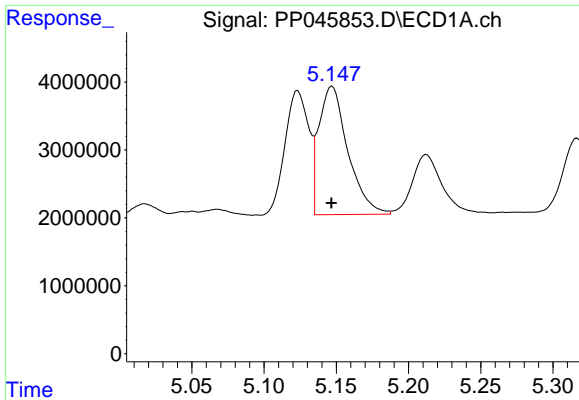
#12 AR-1232-2

R.T.: 4.835 min  
 Delta R.T.: 0.000 min  
 Response: 9427790  
 Conc: 353.54 ng/ml



#12 AR-1232-2

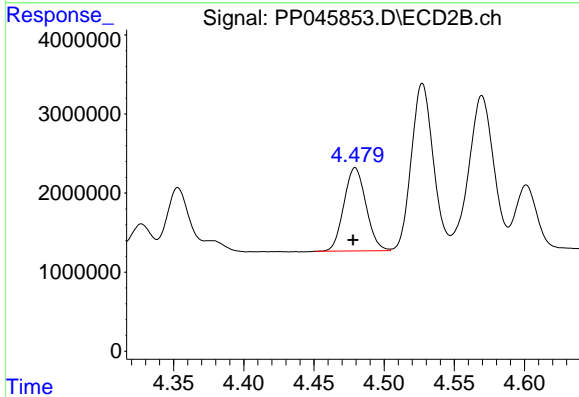
R.T.: 4.294 min  
 Delta R.T.: 0.000 min  
 Response: 17676228  
 Conc: 441.03 ng/ml



#13 AR-1232-3

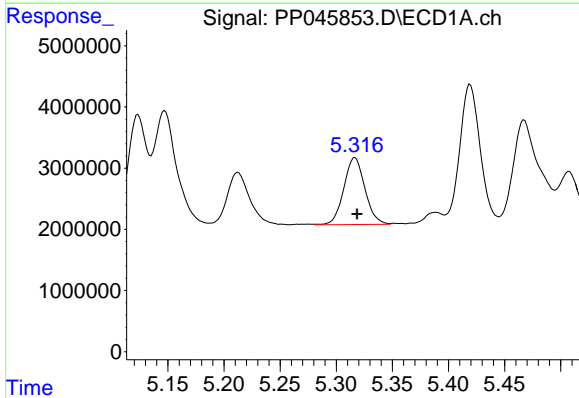
R.T.: 5.147 min  
 Delta R.T.: 0.000 min  
 Response: 26551835  
 Conc: 493.27 ng/ml

Instrument :  
 ECD\_P  
 ClientSampleId :  
 AR1248ICC500



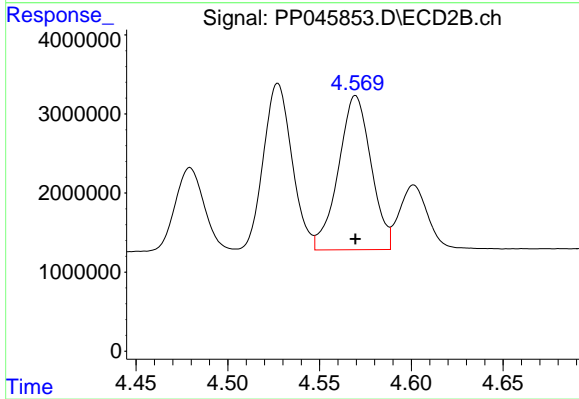
#13 AR-1232-3

R.T.: 4.479 min  
 Delta R.T.: 0.001 min  
 Response: 11538059  
 Conc: 536.96 ng/ml



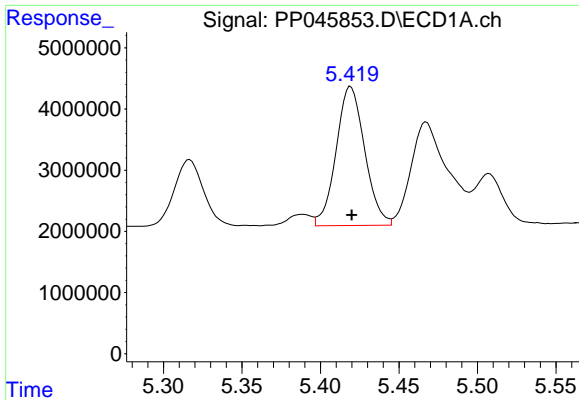
#14 AR-1232-4

R.T.: 5.317 min  
 Delta R.T.: -0.002 min  
 Response: 14342195  
 Conc: 542.17 ng/ml



#14 AR-1232-4

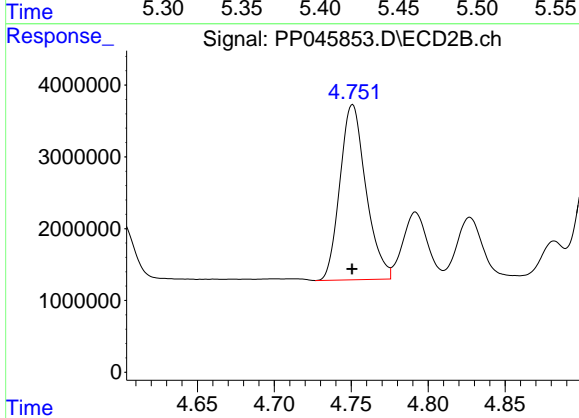
R.T.: 4.570 min  
 Delta R.T.: 0.000 min  
 Response: 24127158  
 Conc: 1273.49 ng/ml



#15 AR-1232-5

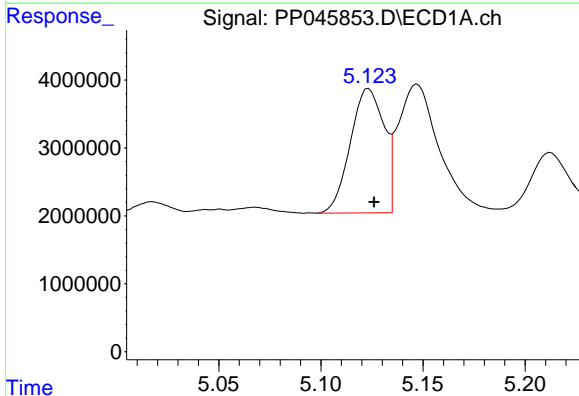
R.T.: 5.419 min  
 Delta R.T.: 0.000 min  
 Response: 28813657  
 Conc: 1563.14 ng/ml

Instrument :  
 ECD\_P  
 ClientSampleId :  
 AR1248ICC500



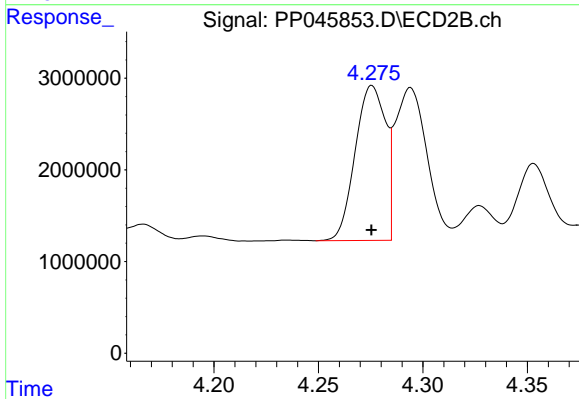
#15 AR-1232-5

R.T.: 4.751 min  
 Delta R.T.: 0.000 min  
 Response: 28581243  
 Conc: 1336.56 ng/ml



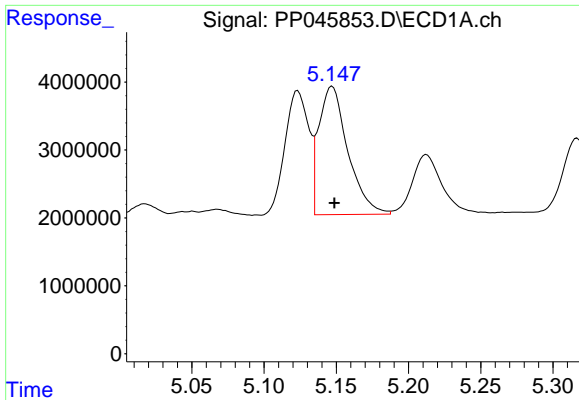
#16 AR-1242-1

R.T.: 5.123 min  
 Delta R.T.: -0.003 min  
 Response: 20915080  
 Conc: 349.96 ng/ml



#16 AR-1242-1

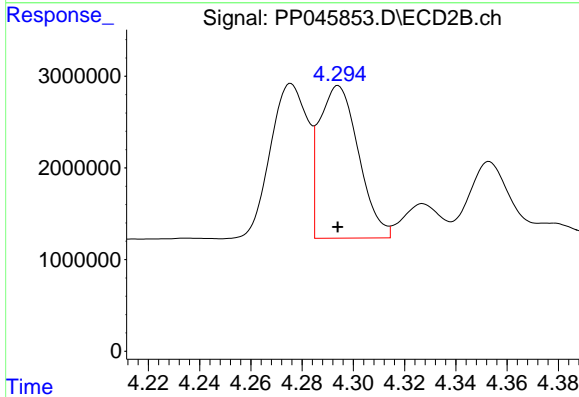
R.T.: 4.276 min  
 Delta R.T.: 0.000 min  
 Response: 17082007  
 Conc: 369.20 ng/ml



#17 AR-1242-2

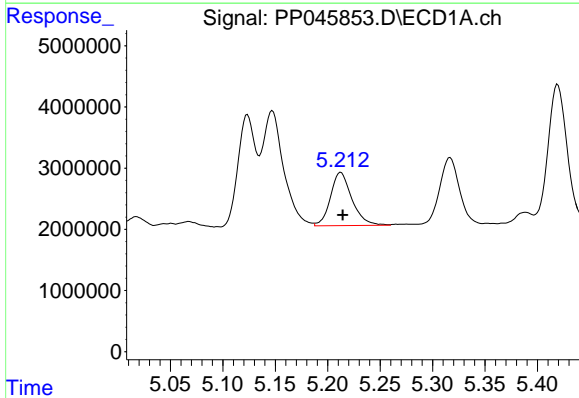
R.T.: 5.147 min  
 Delta R.T.: -0.002 min  
 Response: 26551835  
 Conc: 295.78 ng/ml

Instrument :  
 ECD\_P  
 ClientSampleId :  
 AR1248ICC500



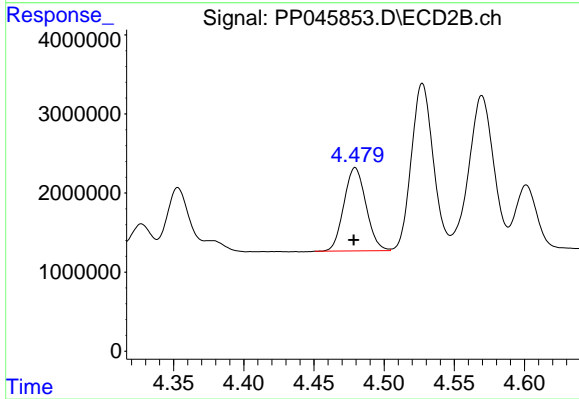
#17 AR-1242-2

R.T.: 4.294 min  
 Delta R.T.: 0.000 min  
 Response: 17676228  
 Conc: 272.59 ng/ml



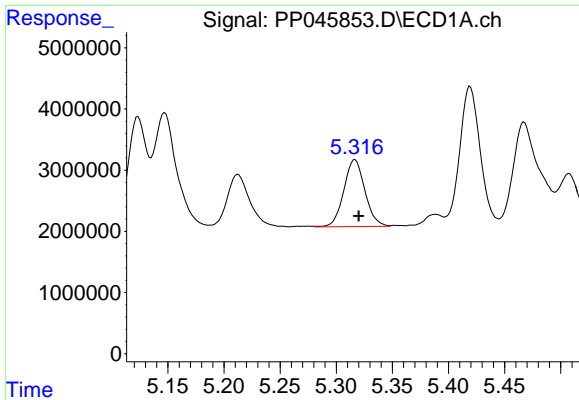
#18 AR-1242-3

R.T.: 5.212 min  
 Delta R.T.: -0.002 min  
 Response: 12397093  
 Conc: 223.48 ng/ml



#18 AR-1242-3

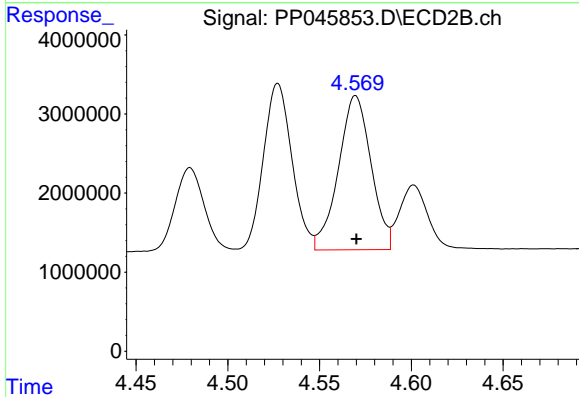
R.T.: 4.479 min  
 Delta R.T.: 0.001 min  
 Response: 11538059  
 Conc: 333.44 ng/ml



#19 AR-1242-4

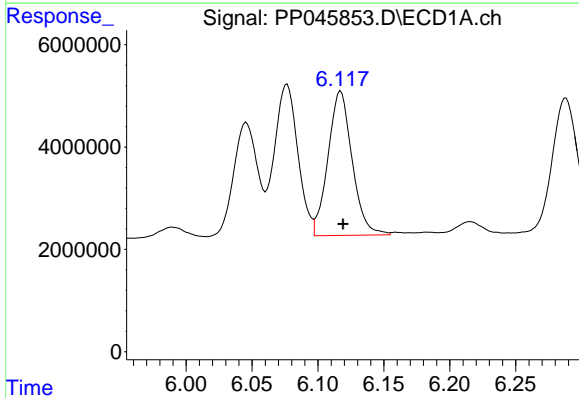
R.T.: 5.317 min  
Delta R.T.: -0.003 min  
Response: 14342195  
Conc: 316.04 ng/ml

Instrument :  
ECD\_P  
ClientSampleId :  
AR1248ICC500



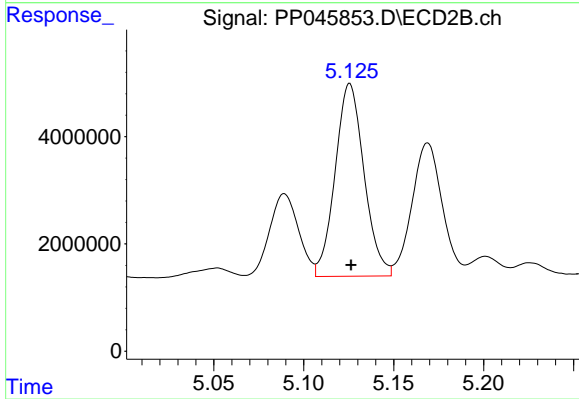
#19 AR-1242-4

R.T.: 4.570 min  
Delta R.T.: 0.000 min  
Response: 24127158  
Conc: 717.78 ng/ml



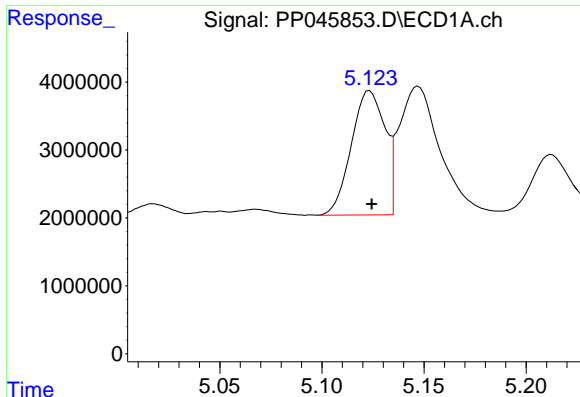
#20 AR-1242-5

R.T.: 6.117 min  
Delta R.T.: -0.002 min  
Response: 35992515  
Conc: 774.90 ng/ml



#20 AR-1242-5

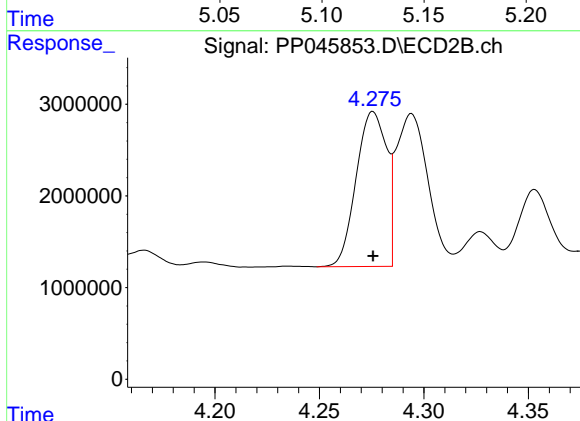
R.T.: 5.126 min  
Delta R.T.: 0.000 min  
Response: 40173135  
Conc: 914.73 ng/ml



#21 AR-1248-1

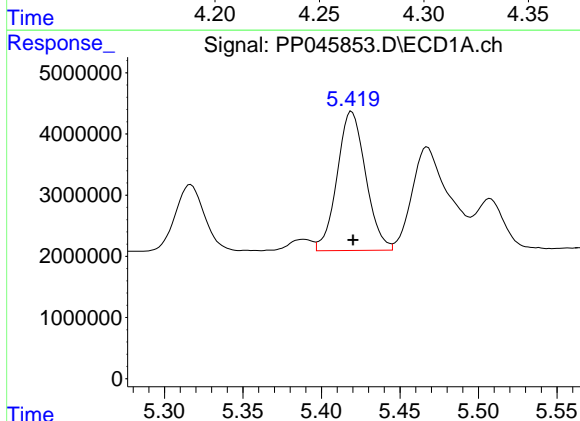
R.T.: 5.123 min  
 Delta R.T.: 0.000 min  
 Response: 20915080  
 Conc: 484.84 ng/ml

Instrument :  
 ECD\_P  
 ClientSampleId :  
 AR1248ICC500



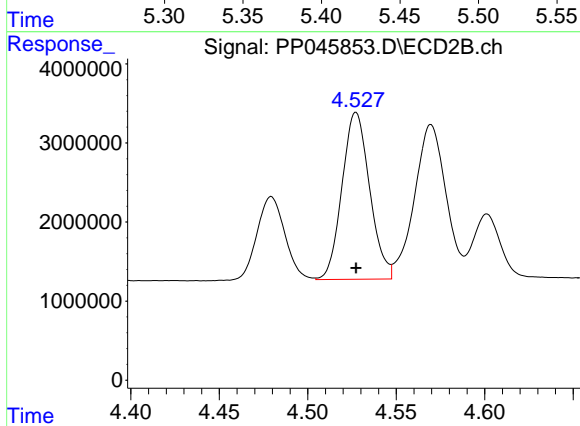
#21 AR-1248-1

R.T.: 4.276 min  
 Delta R.T.: 0.000 min  
 Response: 17082007  
 Conc: 498.12 ng/ml



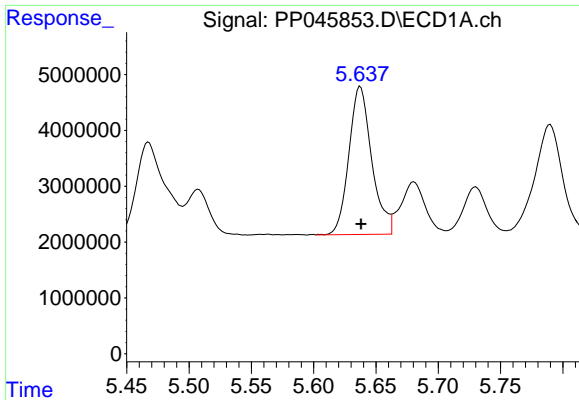
#22 AR-1248-2

R.T.: 5.419 min  
 Delta R.T.: 0.000 min  
 Response: 28813657  
 Conc: 481.98 ng/ml



#22 AR-1248-2

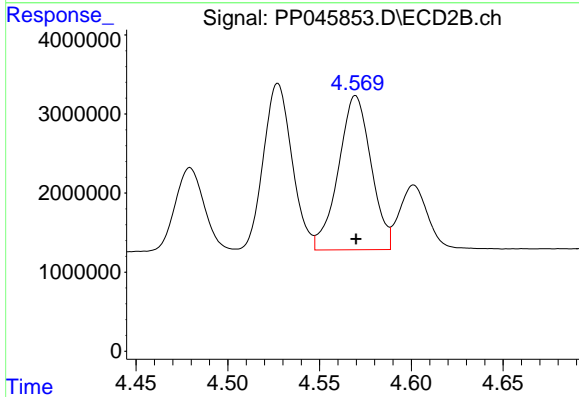
R.T.: 4.527 min  
 Delta R.T.: 0.000 min  
 Response: 22953744  
 Conc: 489.97 ng/ml



#23 AR-1248-3

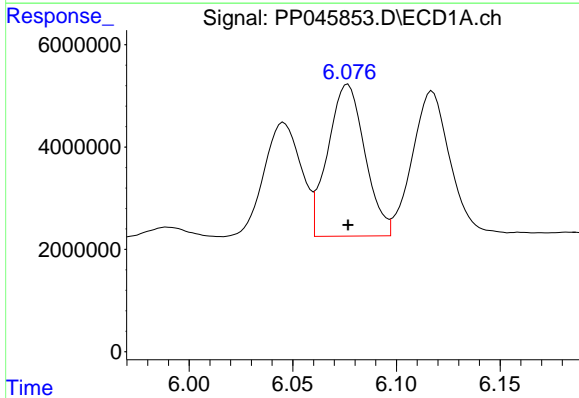
R.T.: 5.638 min  
 Delta R.T.: 0.000 min  
 Response: 33951473  
 Conc: 485.35 ng/ml

Instrument :  
 ECD\_P  
 ClientSampleId :  
 AR1248ICC500



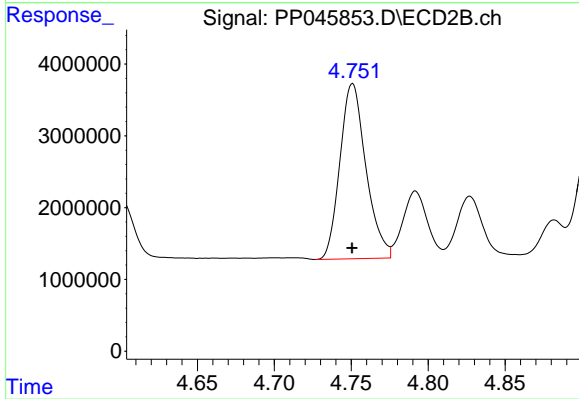
#23 AR-1248-3

R.T.: 4.570 min  
 Delta R.T.: 0.000 min  
 Response: 24127158  
 Conc: 493.61 ng/ml



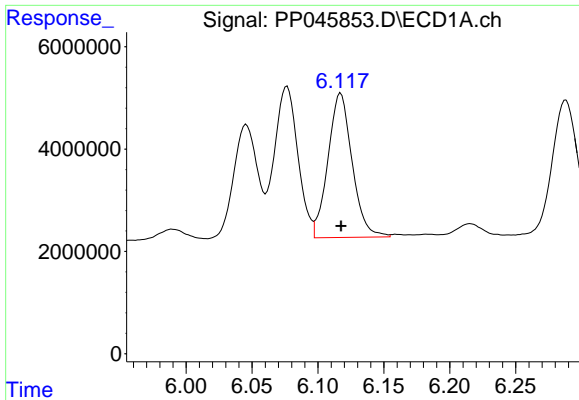
#24 AR-1248-4

R.T.: 6.077 min  
 Delta R.T.: 0.000 min  
 Response: 36903489  
 Conc: 466.76 ng/ml



#24 AR-1248-4

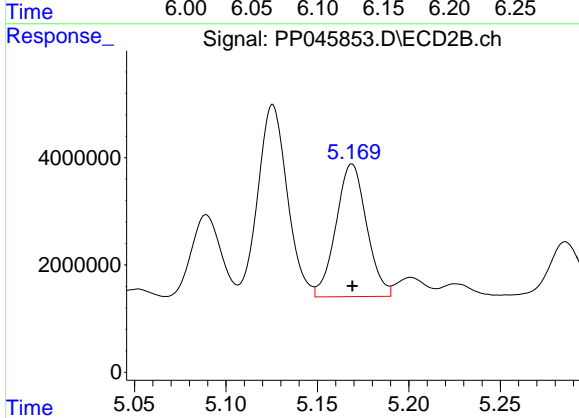
R.T.: 4.751 min  
 Delta R.T.: 0.000 min  
 Response: 28581243  
 Conc: 491.92 ng/ml



#25 AR-1248-5

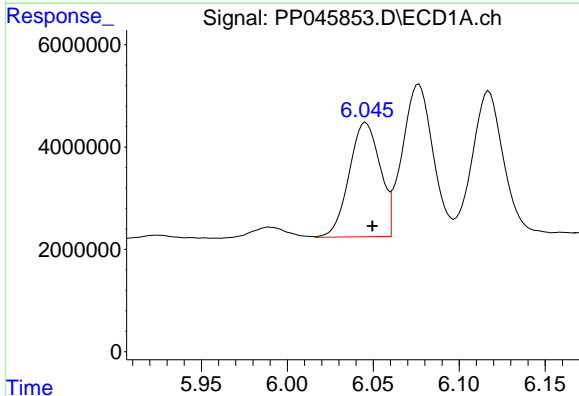
R.T.: 6.117 min  
 Delta R.T.: 0.000 min  
 Response: 35992515  
 Conc: 459.71 ng/ml

Instrument :  
 ECD\_P  
 ClientSampleId :  
 AR1248ICC500



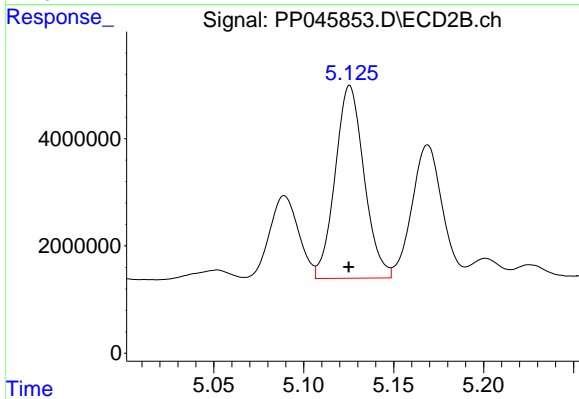
#25 AR-1248-5

R.T.: 5.169 min  
 Delta R.T.: 0.000 min  
 Response: 28843494  
 Conc: 491.41 ng/ml



#26 AR-1254-1

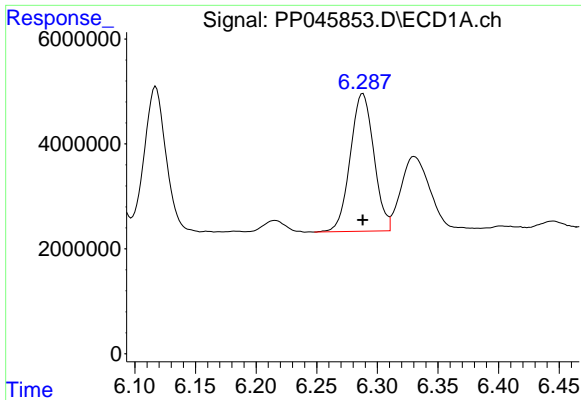
R.T.: 6.046 min  
 Delta R.T.: -0.004 min  
 Response: 27991642  
 Conc: 338.68 ng/ml



#26 AR-1254-1

R.T.: 5.126 min  
 Delta R.T.: 0.000 min  
 Response: 40173135  
 Conc: 455.43 ng/ml

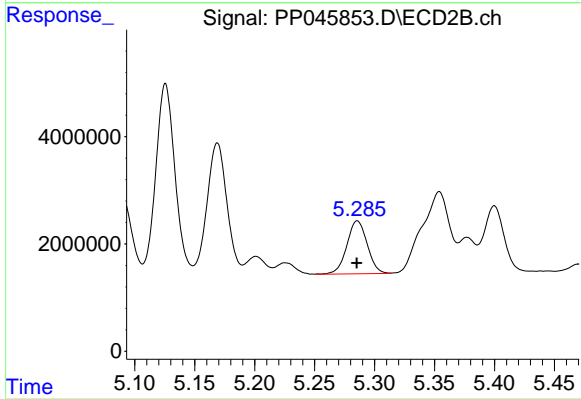




#27 AR-1254-2

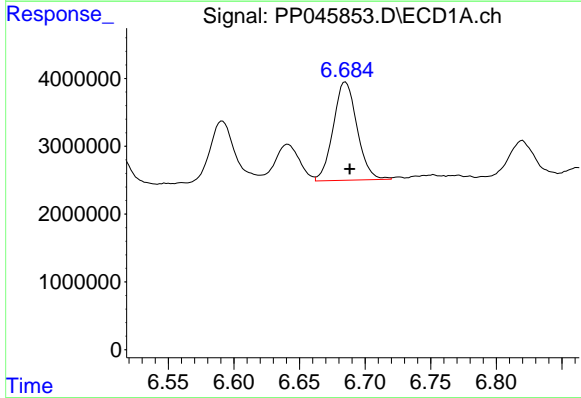
R.T.: 6.288 min  
 Delta R.T.: 0.000 min  
 Response: 35504700  
 Conc: 288.31 ng/ml

Instrument :  
 ECD\_P  
 ClientSampleId :  
 AR1248ICC500



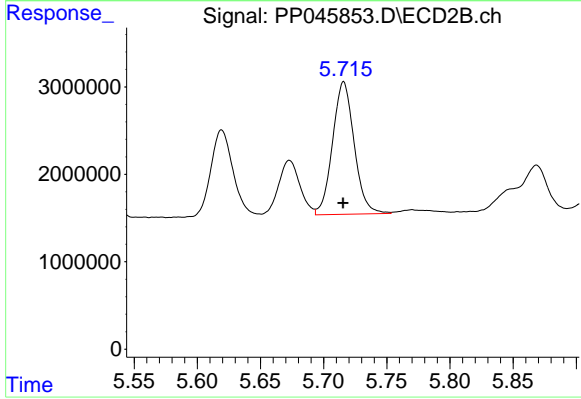
#27 AR-1254-2

R.T.: 5.286 min  
 Delta R.T.: 0.000 min  
 Response: 11680020  
 Conc: 154.76 ng/ml



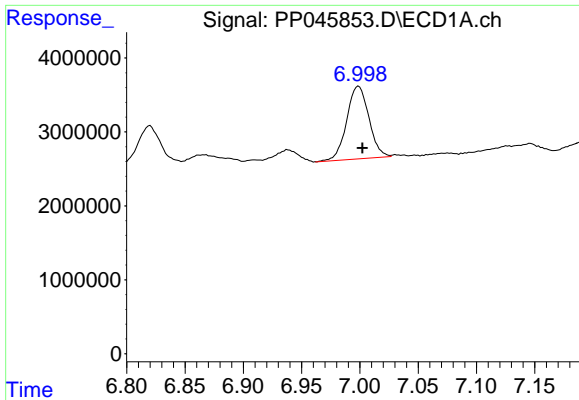
#28 AR-1254-3

R.T.: 6.685 min  
 Delta R.T.: -0.003 min  
 Response: 18321519  
 Conc: 152.42 ng/ml



#28 AR-1254-3

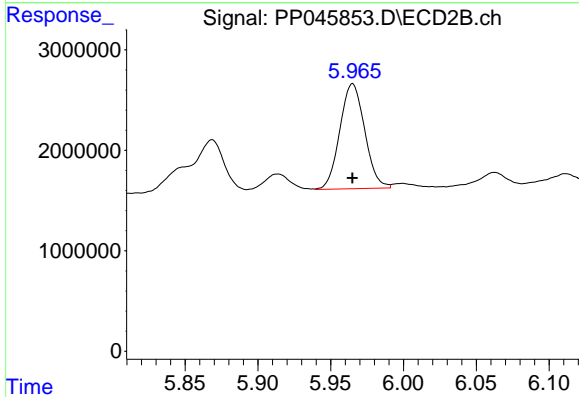
R.T.: 5.716 min  
 Delta R.T.: 0.000 min  
 Response: 18065375  
 Conc: 153.60 ng/ml



#29 AR-1254-4

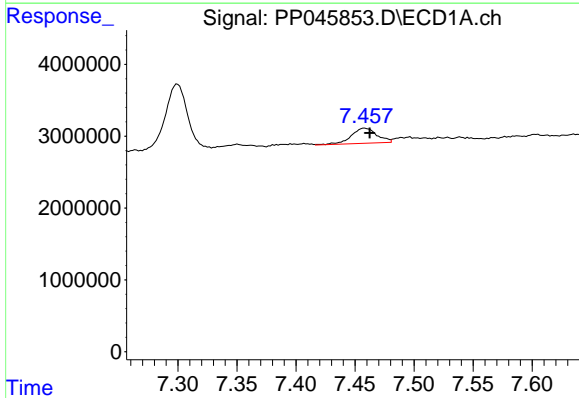
R.T.: 6.999 min  
 Delta R.T.: -0.003 min  
 Response: 12995346  
 Conc: 147.35 ng/ml

Instrument :  
 ECD\_P  
 ClientSampleId :  
 AR1248ICC500



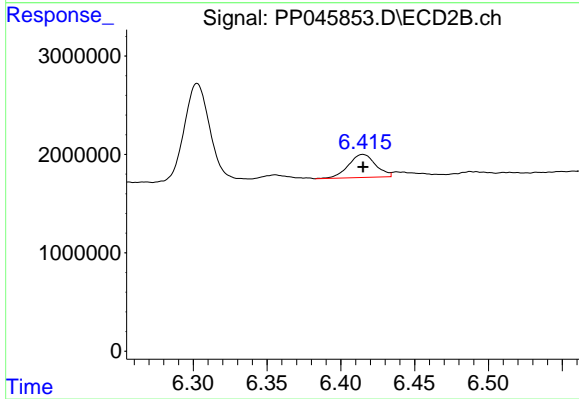
#29 AR-1254-4

R.T.: 5.965 min  
 Delta R.T.: 0.000 min  
 Response: 12447401  
 Conc: 164.94 ng/ml



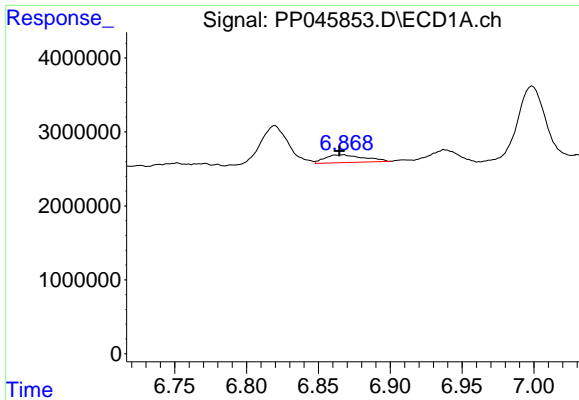
#30 AR-1254-5

R.T.: 7.458 min  
 Delta R.T.: -0.004 min  
 Response: 3161991  
 Conc: 33.75 ng/ml



#30 AR-1254-5

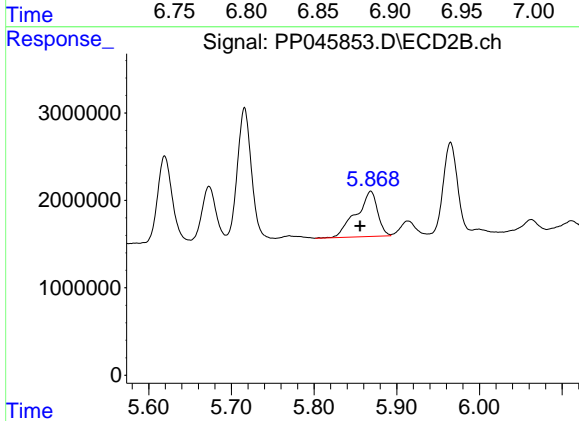
R.T.: 6.415 min  
 Delta R.T.: 0.000 min  
 Response: 3011364  
 Conc: 29.39 ng/ml



#31 AR-1260-1

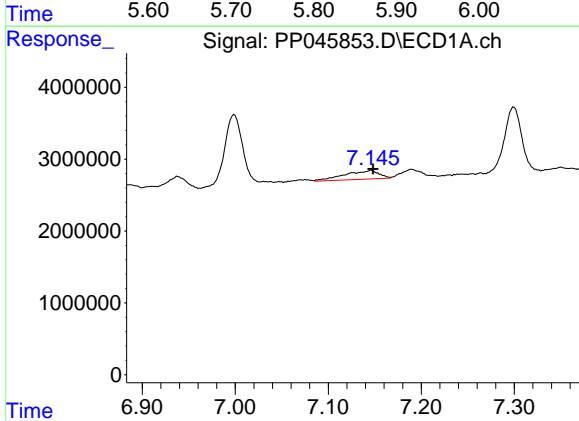
R.T.: 6.867 min  
 Delta R.T.: 0.002 min  
 Response: 1969481  
 Conc: 22.31 ng/ml

Instrument :  
 ECD\_P  
 ClientSampleId :  
 AR1248ICC500



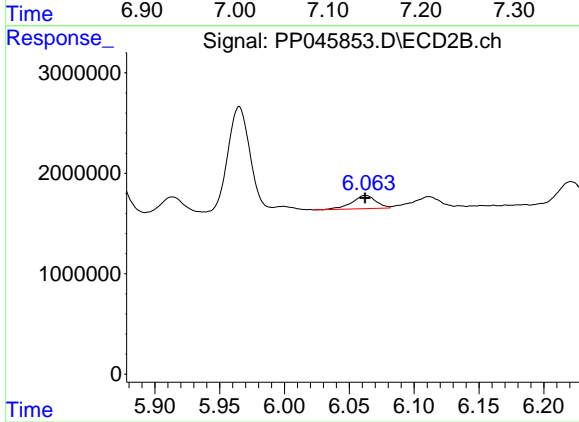
#31 AR-1260-1

R.T.: 5.869 min  
 Delta R.T.: 0.013 min  
 Response: 9306589  
 Conc: 117.59 ng/ml



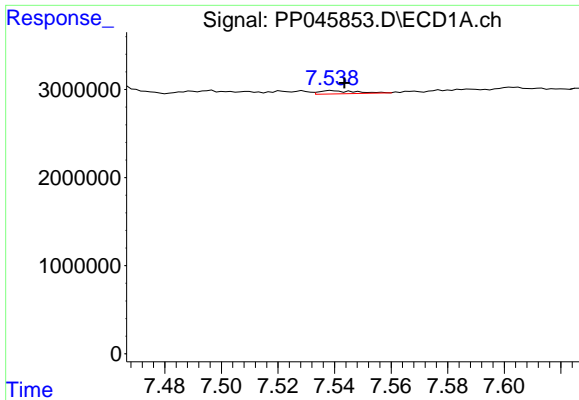
#32 AR-1260-2

R.T.: 7.146 min  
 Delta R.T.: -0.002 min  
 Response: 3102908  
 Conc: 30.29 ng/ml



#32 AR-1260-2

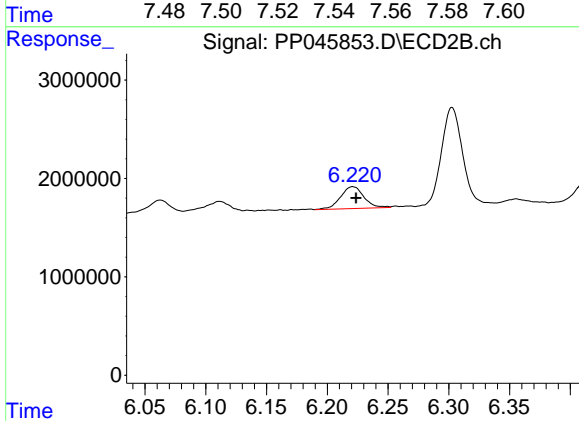
R.T.: 6.063 min  
 Delta R.T.: 0.000 min  
 Response: 1691405  
 Conc: 18.07 ng/ml



#33 AR-1260-3

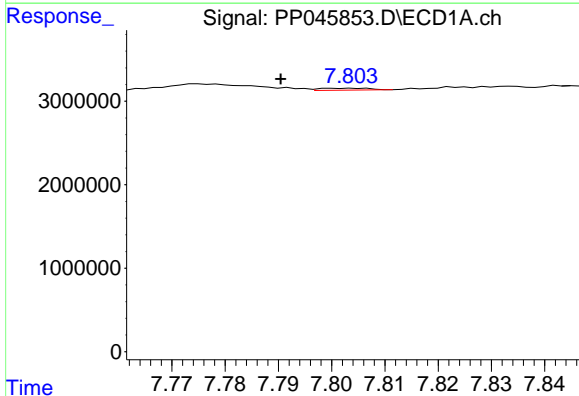
R.T.: 7.539 min  
 Delta R.T.: -0.004 min  
 Response: 315823  
 Conc: 3.83 ng/ml

Instrument :  
 ECD\_P  
 ClientSampleId :  
 AR1248ICC500



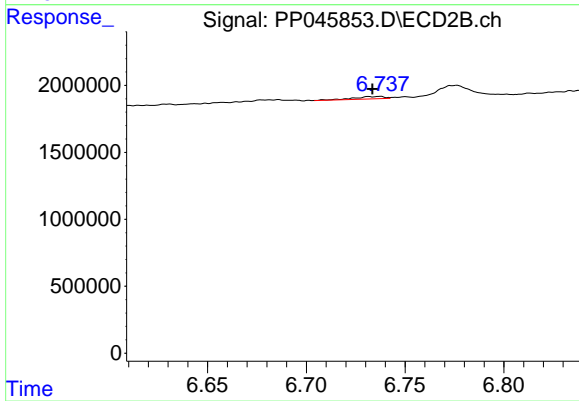
#33 AR-1260-3

R.T.: 6.221 min  
 Delta R.T.: -0.003 min  
 Response: 2963033  
 Conc: 33.45 ng/ml



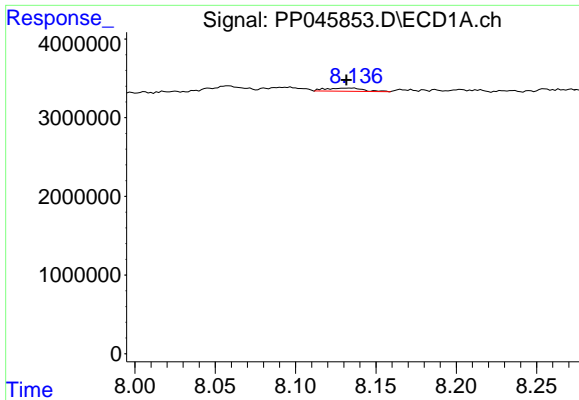
#34 AR-1260-4

R.T.: 7.804 min  
 Delta R.T.: 0.014 min  
 Response: 148331  
 Conc: 1.75 ng/ml



#34 AR-1260-4

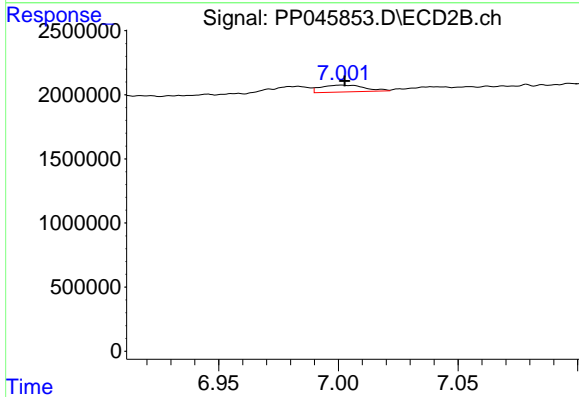
R.T.: 6.737 min  
 Delta R.T.: 0.004 min  
 Response: 196501  
 Conc: 2.74 ng/ml



#35 AR-1260-5

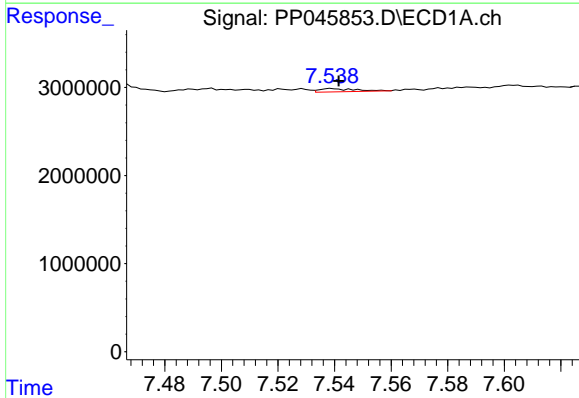
R.T.: 8.136 min  
 Delta R.T.: 0.004 min  
 Response: 644727  
 Conc: 3.93 ng/ml

Instrument :  
 ECD\_P  
 ClientSampleId :  
 AR1248ICC500



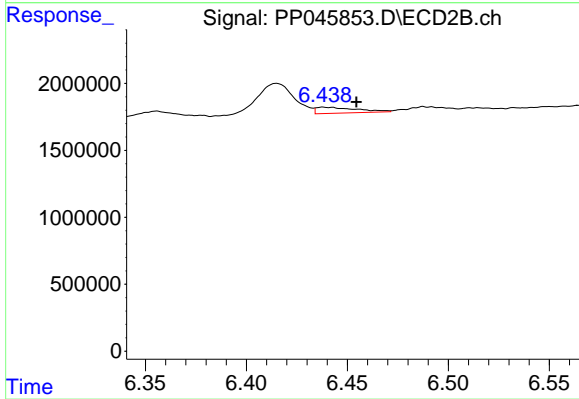
#35 AR-1260-5

R.T.: 7.001 min  
 Delta R.T.: -0.002 min  
 Response: 677885  
 Conc: 3.99 ng/ml



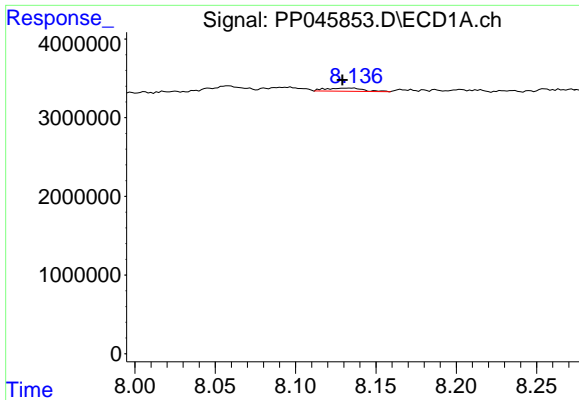
#36 AR-1262-1

R.T.: 7.539 min  
 Delta R.T.: -0.002 min  
 Response: 315823  
 Conc: 2.74 ng/ml



#36 AR-1262-1

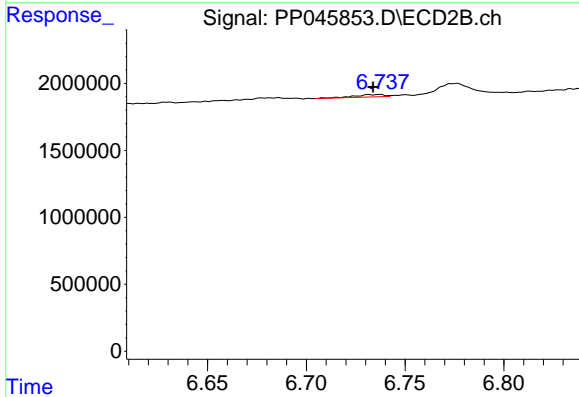
R.T.: 6.438 min  
 Delta R.T.: -0.017 min  
 Response: 623611  
 Conc: 5.90 ng/ml



#37 AR-1262-2

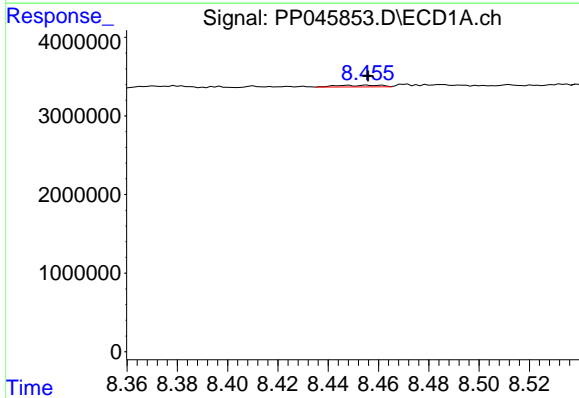
R.T.: 8.136 min  
 Delta R.T.: 0.006 min  
 Response: 644727  
 Conc: 3.60 ng/ml

Instrument :  
 ECD\_P  
 ClientSampleId :  
 AR1248ICC500



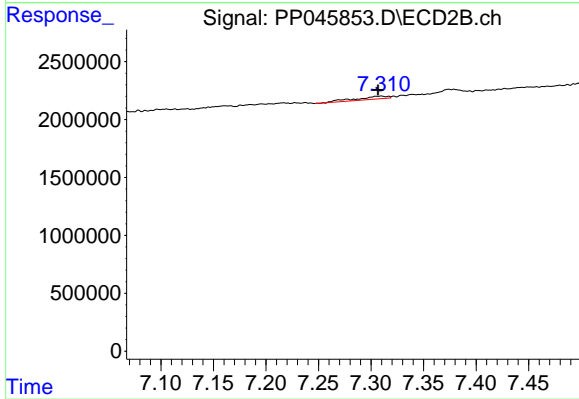
#37 AR-1262-2

R.T.: 6.737 min  
 Delta R.T.: 0.003 min  
 Response: 196501  
 Conc: 2.09 ng/ml



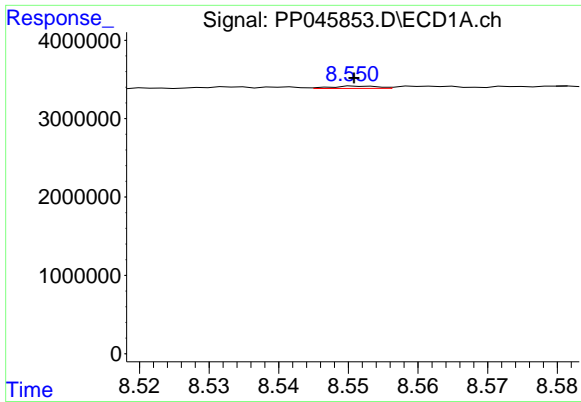
#38 AR-1262-3

R.T.: 8.455 min  
 Delta R.T.: 0.000 min  
 Response: 272364  
 Conc: 2.09 ng/ml



#38 AR-1262-3

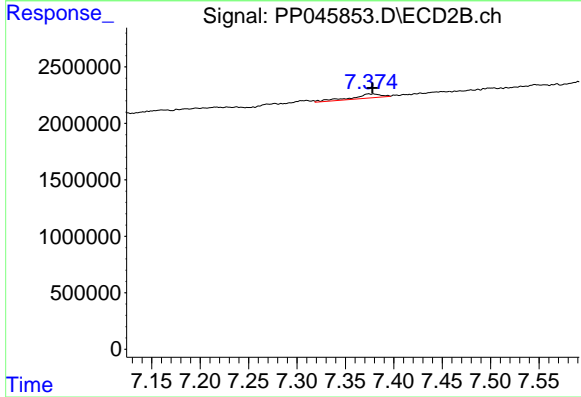
R.T.: 7.310 min  
 Delta R.T.: 0.003 min  
 Response: 515949  
 Conc: 6.74 ng/ml



#39 AR-1262-4

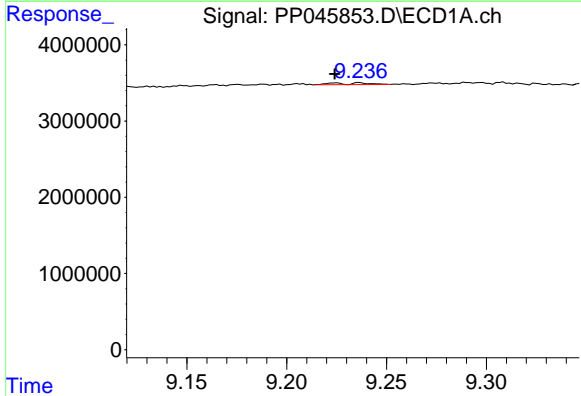
R.T.: 8.552 min  
 Delta R.T.: 0.001 min  
 Response: 140534  
 Conc: 2.23 ng/ml

Instrument :  
 ECD\_P  
 ClientSampleId :  
 AR1248ICC500



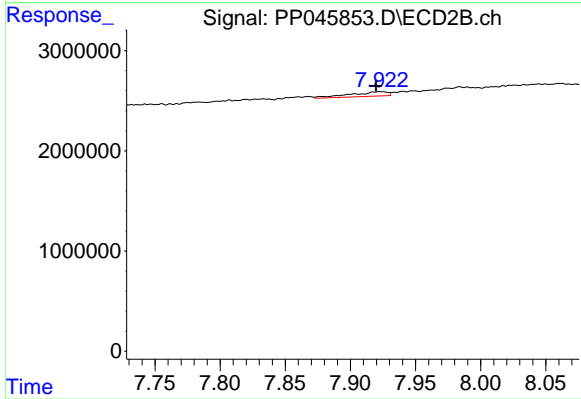
#39 AR-1262-4

R.T.: 7.379 min  
 Delta R.T.: 0.000 min  
 Response: 749458  
 Conc: 5.27 ng/ml



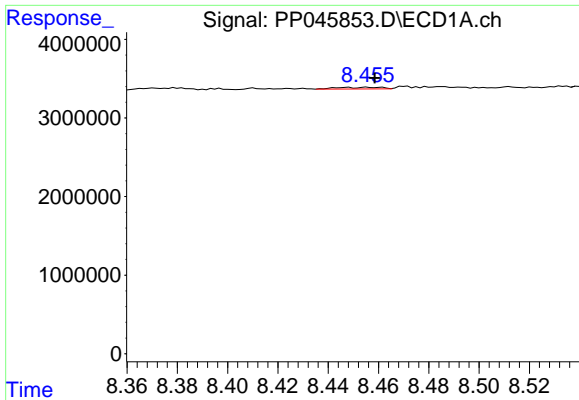
#40 AR-1262-5

R.T.: 9.224 min  
 Delta R.T.: 0.000 min  
 Response: 270849  
 Conc: 3.97 ng/ml



#40 AR-1262-5

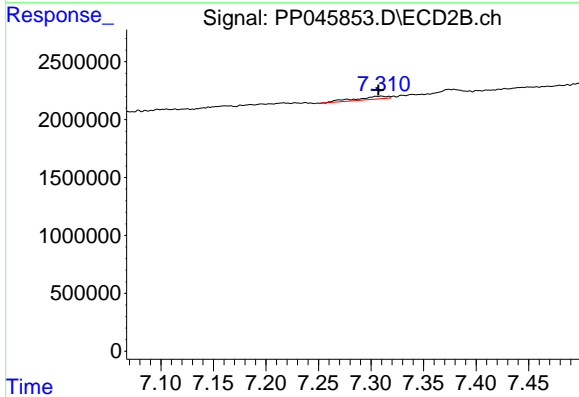
R.T.: 7.923 min  
 Delta R.T.: 0.004 min  
 Response: 914565  
 Conc: 13.06 ng/ml



#41 AR-1268-1

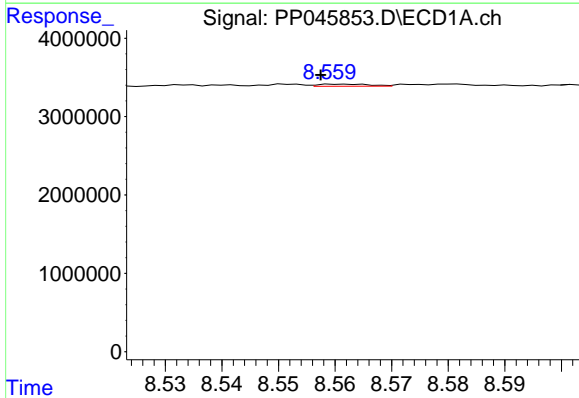
R.T.: 8.455 min  
 Delta R.T.: -0.003 min  
 Response: 272364  
 Conc: 1.00 ng/ml

Instrument :  
 ECD\_P  
 ClientSampleId :  
 AR1248ICC500



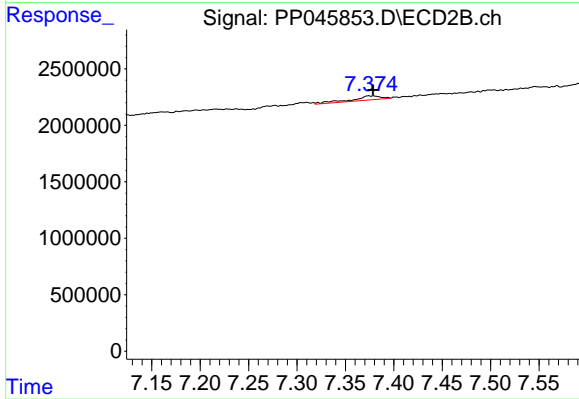
#41 AR-1268-1

R.T.: 7.310 min  
 Delta R.T.: 0.003 min  
 Response: 515949  
 Conc: 2.33 ng/ml



#42 AR-1268-2

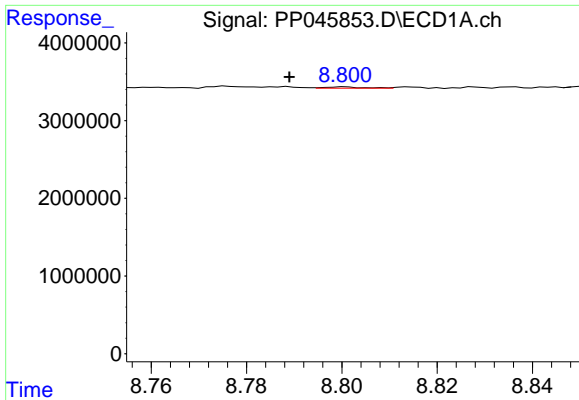
R.T.: 8.561 min  
 Delta R.T.: 0.004 min  
 Response: 172810  
 Conc: 0.68 ng/ml



#42 AR-1268-2

R.T.: 7.379 min  
 Delta R.T.: 0.000 min  
 Response: 749458  
 Conc: 3.70 ng/ml

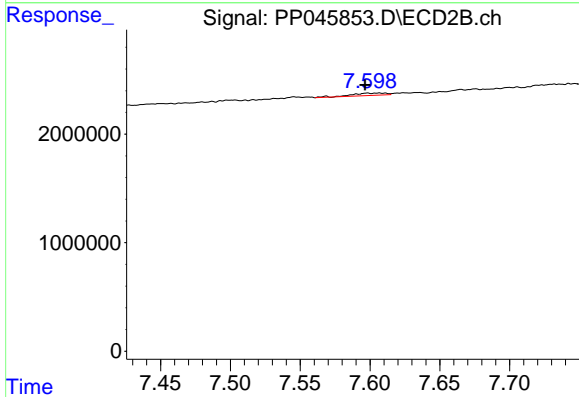




#43 AR-1268-3

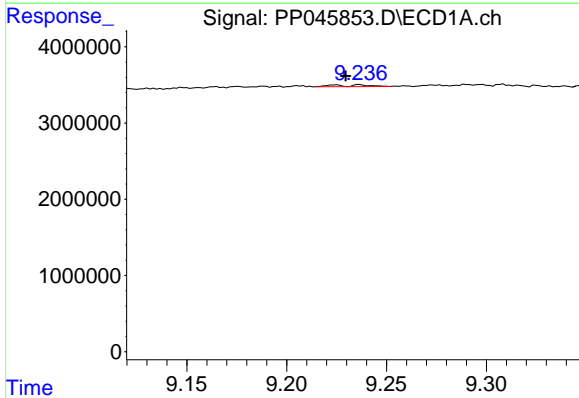
R.T.: 8.800 min  
 Delta R.T.: 0.011 min  
 Response: 97629  
 Conc: 0.43 ng/ml

Instrument :  
 ECD\_P  
 ClientSampleId :  
 AR1248ICC500



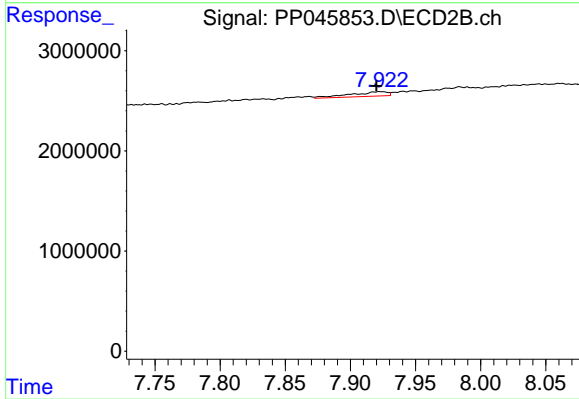
#43 AR-1268-3

R.T.: 7.606 min  
 Delta R.T.: 0.010 min  
 Response: 369103  
 Conc: 2.17 ng/ml



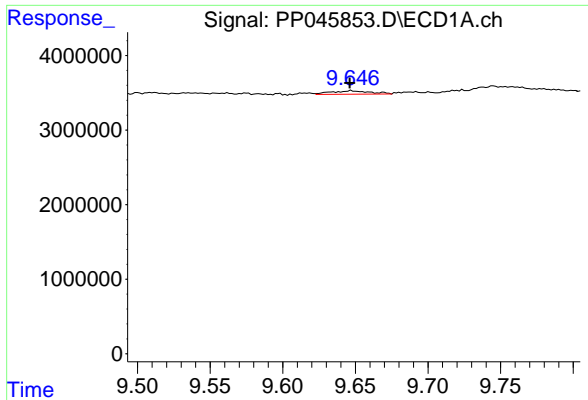
#44 AR-1268-4

R.T.: 9.224 min  
 Delta R.T.: -0.005 min  
 Response: 270849  
 Conc: 3.00 ng/ml



#44 AR-1268-4

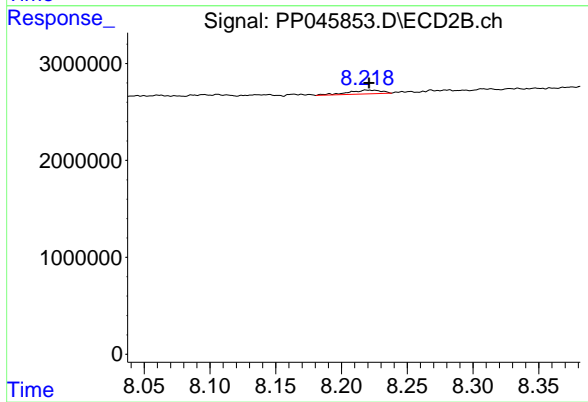
R.T.: 7.923 min  
 Delta R.T.: 0.003 min  
 Response: 914565  
 Conc: 11.59 ng/ml



#45 AR-1268-5

R.T.: 9.647 min  
Delta R.T.: 0.001 min  
Response: 857921  
Conc: 1.26 ng/ml

Instrument :  
ECD\_P  
ClientSampleId :  
AR1248ICC500



#45 AR-1268-5

R.T.: 8.219 min  
Delta R.T.: -0.002 min  
Response: 694121  
Conc: 1.25 ng/ml