

Data Path : Z:\pestpcbsrv\HPCHEM1\ECD\_P\Data\PP041222\  
 Data File : PP045859.D  
 Signal(s) : Signal #1: ECD1A.ch Signal #2: ECD2B.ch  
 Acq On : 12 Apr 2022 00:58  
 Operator : YP\AJ  
 Sample : AR1254ICC250  
 Misc :  
 ALS Vial : 23 Sample Multiplier: 1

Instrument :  
 ECD\_P  
 ClientSampleId :

Integration File signal 1: autoint1.e  
 Integration File signal 2: autoint2.e  
 Quant Time: Apr 12 06:57:56 2022  
 Quant Method : Z:\pestpcbsrv\HPCHEM1\ECD\_P\methods\PP041222.M  
 Quant Title : GC EXTRACTABLES  
 QLast Update : Tue Apr 12 05:31:12 2022  
 Response via : Initial Calibration  
 Integrator: ChemStation

Volume Inj. : 2 µl  
 Signal #1 Phase : ZB-MR2 Signal #2 Phase: ZB-MR2  
 Signal #1 Info : 30Mx0.32mmx 0.50µ Signal #2 Info : 30M x 0.32mm x 0.25µm

Compound	RT#1	RT#2	Resp#1	Resp#2	ng/ml	ng/ml
-----						
System Monitoring Compounds						
1) SA Tetrachlo...	3.875	3.137	64351610	43592775	26.162	27.435
2) SA Decachlor...	9.977	8.478	40459549	38464594	24.647	26.987
Target Compounds						
3) L1 AR-1016-1	5.123	4.276	716211	457855	9.341	7.796
4) L1 AR-1016-2	5.152	4.295	789240	369578	6.825	4.424 #
5) L1 AR-1016-3	5.215	4.479	183965	215519	2.670	4.879 #
6) L1 AR-1016-4	5.314	4.527	379320	9697956	6.446	271.768 #
7) L1 AR-1016-5	5.638	4.750	6829300	5735430	123.842	120.731
8) L2 AR-1221-1	4.100	3.362	93973	48323	3.607	2.379 #
9) L2 AR-1221-2	4.199	3.450	678792	626737	35.693	41.235
10) L2 AR-1221-3	4.270	3.530	262931	144269	4.277	3.126 #
11) L3 AR-1232-1	4.270	3.530	262931	144269	4.633	3.400 #
12) L3 AR-1232-2	4.836	4.295	459830	369578	17.243	9.221 #
13) L3 AR-1232-3	5.152	4.479	789240	215519	14.662	10.030 #
14) L3 AR-1232-4	5.314	4.569	379320	2742153	14.339	144.737 #
15) L3 AR-1232-5	5.420	4.750	11689881	5735430	634.177	268.210 #
16) L4 AR-1242-1	5.123	4.276	716211	457855	11.984	9.896
17) L4 AR-1242-2	5.152	4.295	789240	369578	8.792	5.699 #
18) L4 AR-1242-3	5.215	4.479	183965	215519	3.316	6.228 #
19) L4 AR-1242-4	5.314	4.569	379320	2742153	8.359	81.579 #
20) L4 AR-1242-5	6.121	5.126	6371067	23000472	137.166	523.711 #
21) L5 AR-1248-1	5.123	4.276	716211	457855	16.603	13.351
22) L5 AR-1248-2	5.420	4.527	11689881	9697956	195.543	207.014
23) L5 AR-1248-3	5.638	4.569	6829300	2742153	97.628	56.101 #
24) L5 AR-1248-4	6.076	4.750	9896390	5735430	125.170	98.714
25) L5 AR-1248-5	6.121	5.169	6371067	2906396	81.374	49.517 #
26) L6 AR-1254-1	6.047	5.126	19972126	23000472	241.650	260.751
27) L6 AR-1254-2	6.286	5.286	29598186	19858119	240.351	263.118
28) L6 AR-1254-3	6.686	5.716	29083926	30412364	241.950	258.586
29) L6 AR-1254-4	6.999	5.965	21431834	19625528	243.002	260.061
30) L6 AR-1254-5	7.458	6.415	22503561	26575409	240.224	259.393
31) L7 AR-1260-1	6.865	5.856	11282504	15163323	127.812	191.583 #
32) L7 AR-1260-2	7.148	6.062	12617573	12181305	123.164	130.129
33) L7 AR-1260-3	7.526f	6.222	2817203	13087965	34.196	147.747 #
34) L7 AR-1260-4	7.774f	6.735	8616120	1191003	101.677	16.586 #
35) L7 AR-1260-5	8.129	7.003	2308088	3140203	14.054	18.486 #
36) L8 AR-1262-1	7.526f	0.000	2817203	0	24.484	N.D. #
37) L8 AR-1262-2	8.129	6.735	2308088	1191003	12.885	12.650
38) L8 AR-1262-3	8.473f	7.310	2795529	905379	21.454	11.826 #
39) L8 AR-1262-4	8.546	7.377	529242	3335167	8.403	23.443 #
40) L8 AR-1262-5	9.228	7.919	149539	815431	2.190	11.640 #
41) L9 AR-1268-1	8.473	7.310	2795529	905379	10.280	4.081 #

Data Path : Z:\pestpcbsrv\HPCHEM1\ECD\_P\Data\PP041222\  
 Data File : PP045859.D  
 Signal(s) : Signal #1: ECD1A.ch Signal #2: ECD2B.ch  
 Acq On : 12 Apr 2022 00:58  
 Operator : YP\AJ  
 Sample : AR1254ICC250  
 Misc :  
 ALS Vial : 23 Sample Multiplier: 1

Instrument :  
 ECD\_P  
 ClientSampleId :

Integration File signal 1: autoint1.e  
 Integration File signal 2: autoint2.e  
 Quant Time: Apr 12 06:57:56 2022  
 Quant Method : Z:\pestpcbsrv\HPCHEM1\ECD\_P\methods\PP041222.M  
 Quant Title : GC EXTRACTABLES  
 QLast Update : Tue Apr 12 05:31:12 2022  
 Response via : Initial Calibration  
 Integrator: ChemStation

Volume Inj. : 2 µl  
 Signal #1 Phase : ZB-MR1 Signal #2 Phase: ZB-MR2  
 Signal #1 Info : 30Mx0.32mmx 0.50µ Signal #2 Info : 30M x 0.32mm x 0.25µm

	Compound	RT#1	RT#2	Resp#1	Resp#2	ng/ml	ng/ml
42)	L9 AR-1268-2	8.546	7.377	529242	3335167	2.092	16.461 #
43)	L9 AR-1268-3	8.789	7.610	76885	240284	0.338	1.411 #
44)	L9 AR-1268-4	9.228	7.919	149539	815431	1.657	10.332 #
45)	L9 AR-1268-5	9.649	8.221	282342	344228	0.415	0.621 #

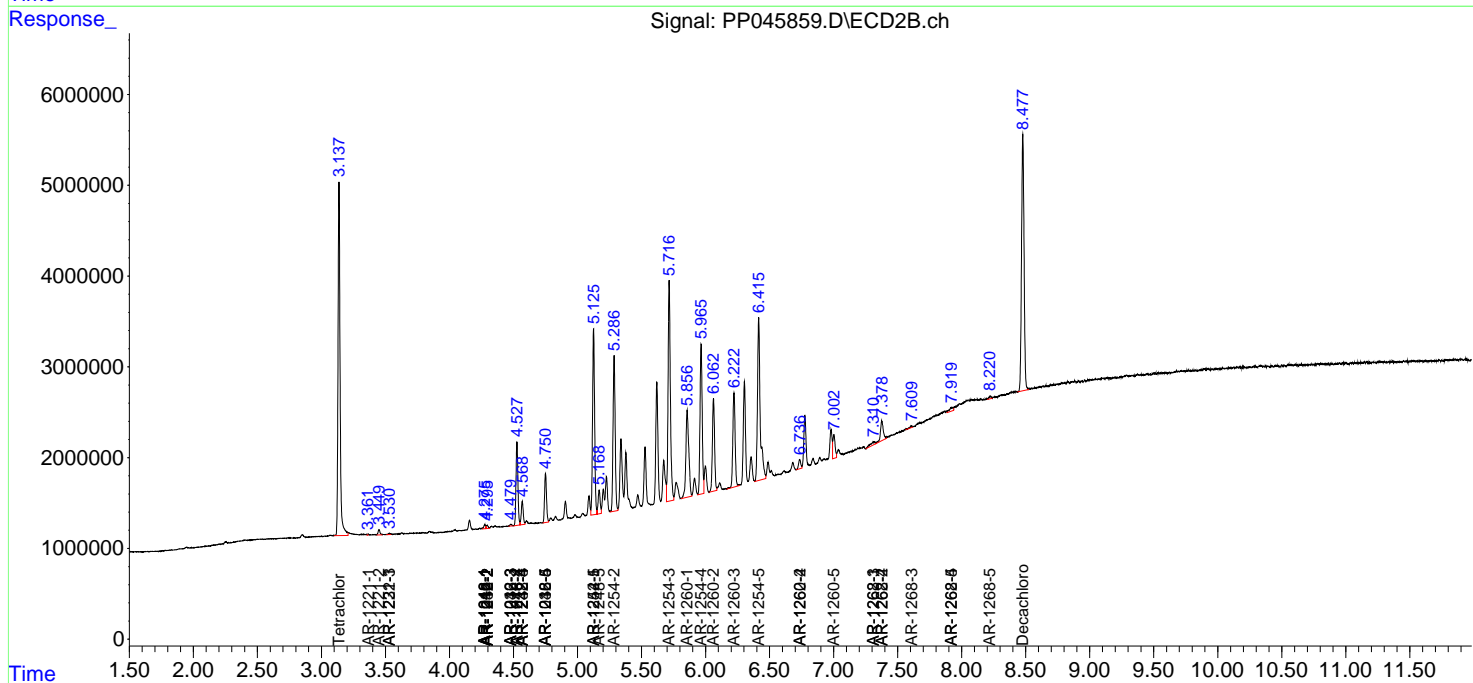
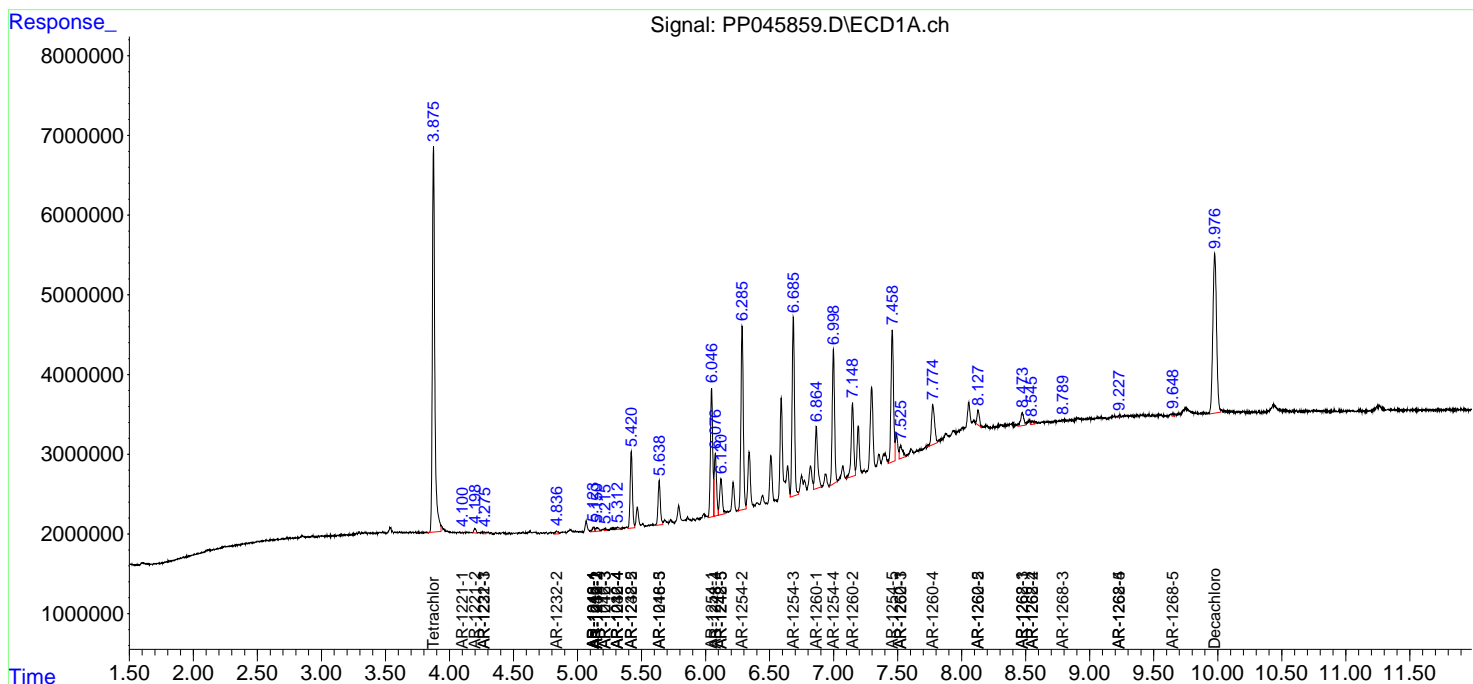
(f)=RT Delta > 1/2 Window (#)=Amounts differ by > 25% (m)=manual int.

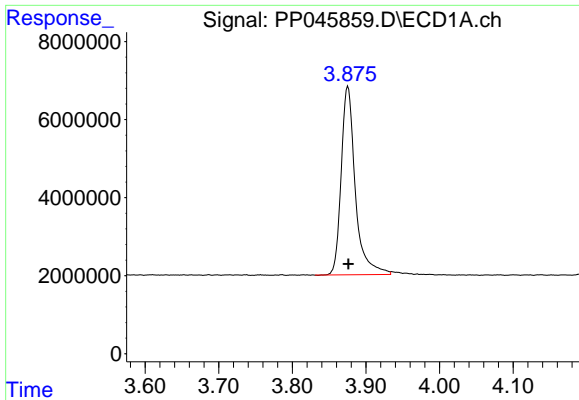
Data Path : Z:\pestpcbsrv\HPCHEM1\ECD\_P\Data\PP041222\  
 Data File : PP045859.D  
 Signal(s) : Signal #1: ECD1A.ch Signal #2: ECD2B.ch  
 Acq On : 12 Apr 2022 00:58  
 Operator : YP\AJ  
 Sample : AR1254ICC250  
 Misc :  
 ALS Vial : 23 Sample Multiplier: 1

Instrument :  
 ECD\_P  
 ClientSampleId :

Integration File signal 1: autoint1.e  
 Integration File signal 2: autoint2.e  
 Quant Time: Apr 12 06:57:56 2022  
 Quant Method : Z:\pestpcbsrv\HPCHEM1\ECD\_P\methods\PP041222.M  
 Quant Title : GC EXTRACTABLES  
 QLast Update : Tue Apr 12 05:31:12 2022  
 Response via : Initial Calibration  
 Integrator: ChemStation

Volume Inj. : 2 µl  
 Signal #1 Phase : ZB-MR1 Signal #2 Phase: ZB-MR2  
 Signal #1 Info : 30Mx0.32mmx 0.50µ Signal #2 Info : 30M x 0.32mm x 0.25µm

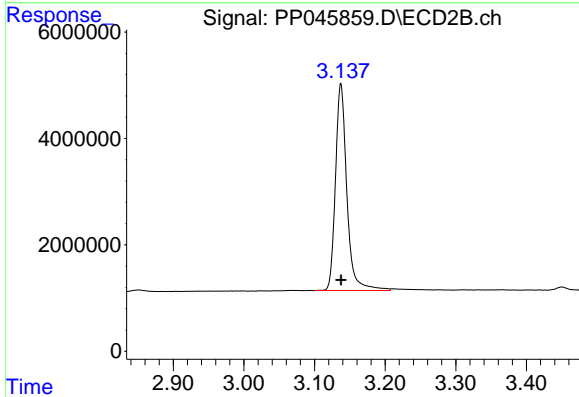




#1 Tetrachloro-m-xylene

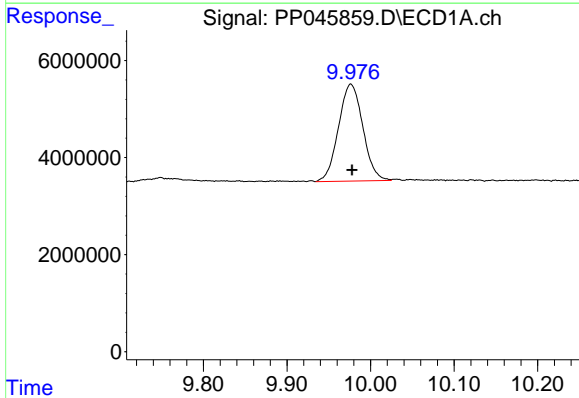
R.T.: 3.875 min  
 Delta R.T.: 0.000 min  
 Response: 64351610  
 Conc: 26.16 ng/ml

Instrument :  
 ECD\_P  
 ClientSampleId :



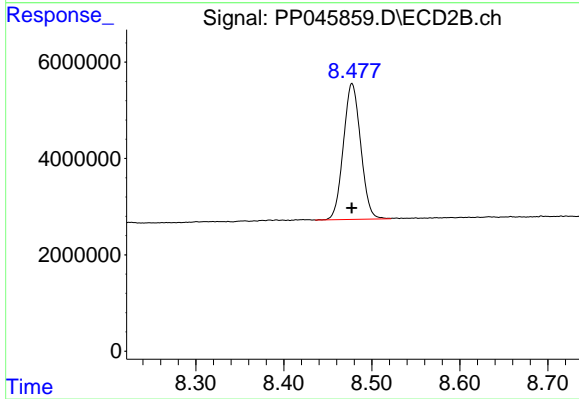
#1 Tetrachloro-m-xylene

R.T.: 3.137 min  
 Delta R.T.: 0.000 min  
 Response: 43592775  
 Conc: 27.43 ng/ml



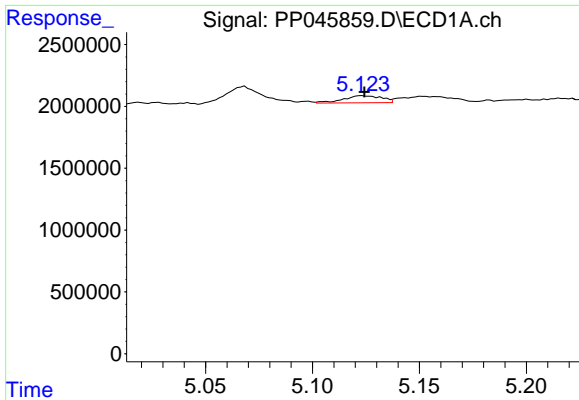
#2 Decachlorobiphenyl

R.T.: 9.977 min  
 Delta R.T.: -0.001 min  
 Response: 40459549  
 Conc: 24.65 ng/ml



#2 Decachlorobiphenyl

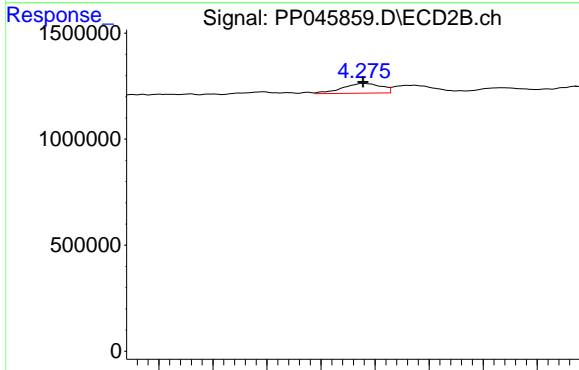
R.T.: 8.478 min  
 Delta R.T.: 0.000 min  
 Response: 38464594  
 Conc: 26.99 ng/ml



#3 AR-1016-1

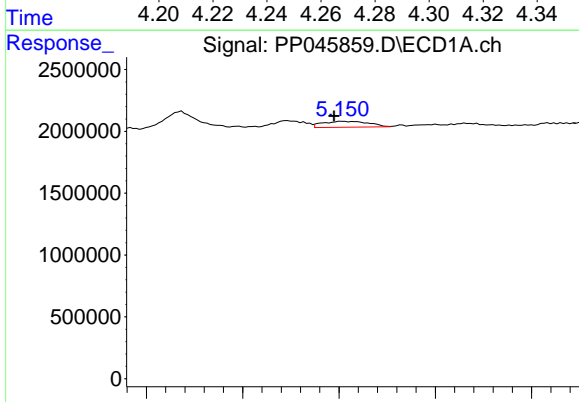
R.T.: 5.123 min  
 Delta R.T.: -0.001 min  
 Response: 716211  
 Conc: 9.34 ng/ml

Instrument :  
 ECD\_P  
 ClientSampleId :



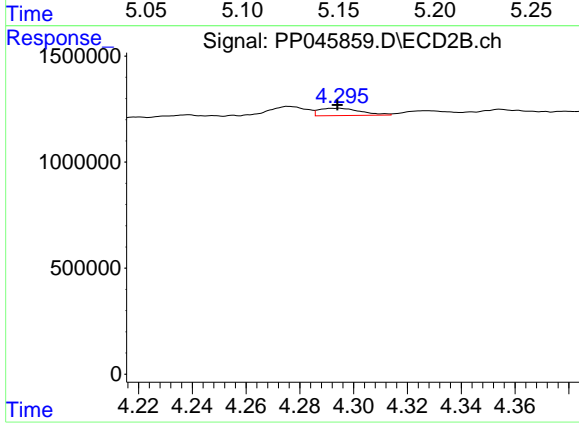
#3 AR-1016-1

R.T.: 4.276 min  
 Delta R.T.: 0.000 min  
 Response: 457855  
 Conc: 7.80 ng/ml



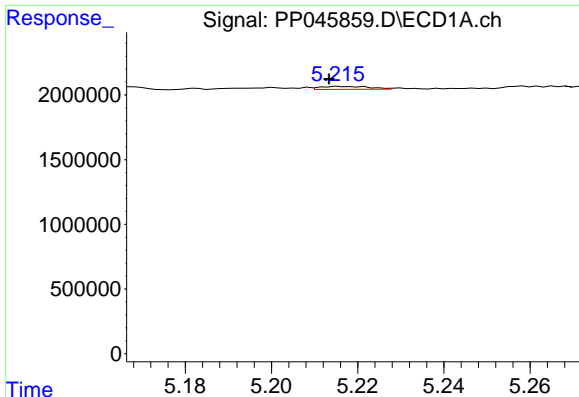
#4 AR-1016-2

R.T.: 5.152 min  
 Delta R.T.: 0.005 min  
 Response: 789240  
 Conc: 6.83 ng/ml



#4 AR-1016-2

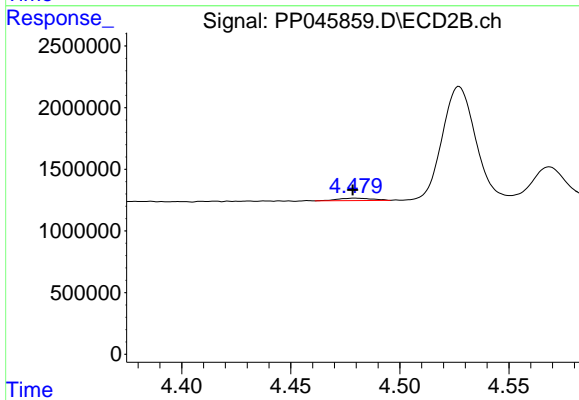
R.T.: 4.295 min  
 Delta R.T.: 0.000 min  
 Response: 369578  
 Conc: 4.42 ng/ml



#5 AR-1016-3

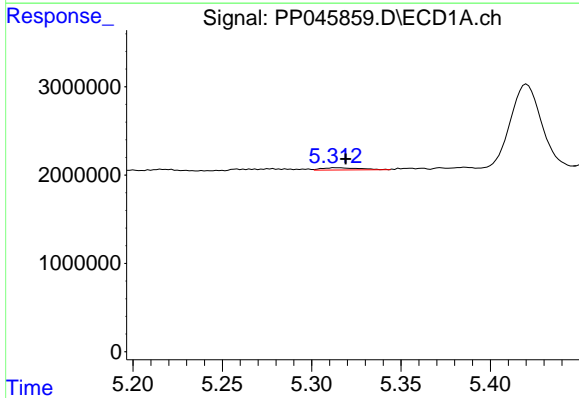
R.T.: 5.215 min  
 Delta R.T.: 0.002 min  
 Response: 183965  
 Conc: 2.67 ng/ml

Instrument :  
 ECD\_P  
 ClientSampleId :



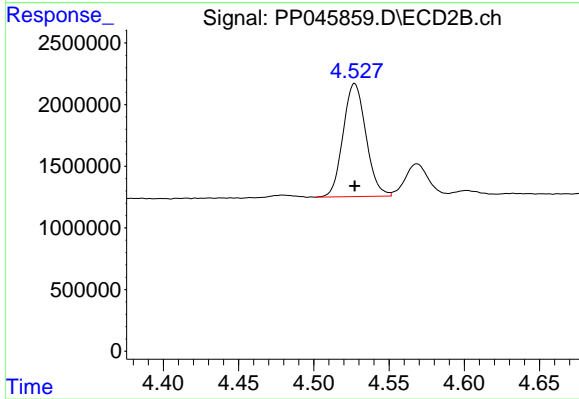
#5 AR-1016-3

R.T.: 4.479 min  
 Delta R.T.: 0.000 min  
 Response: 215519  
 Conc: 4.88 ng/ml



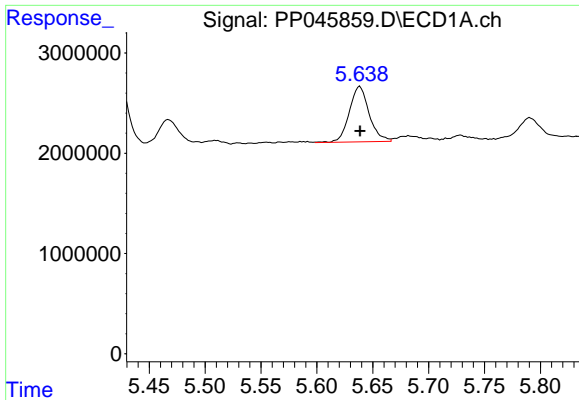
#6 AR-1016-4

R.T.: 5.314 min  
 Delta R.T.: -0.005 min  
 Response: 379320  
 Conc: 6.45 ng/ml



#6 AR-1016-4

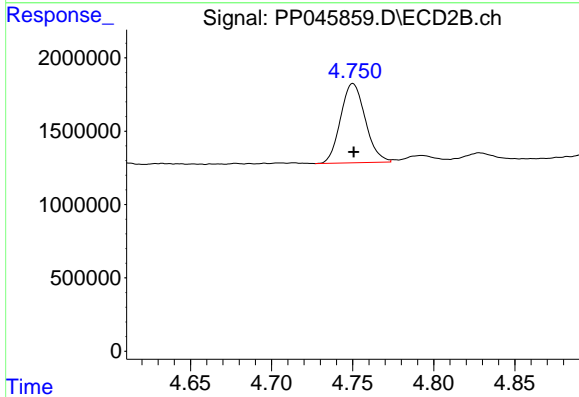
R.T.: 4.527 min  
 Delta R.T.: 0.000 min  
 Response: 9697956  
 Conc: 271.77 ng/ml



#7 AR-1016-5

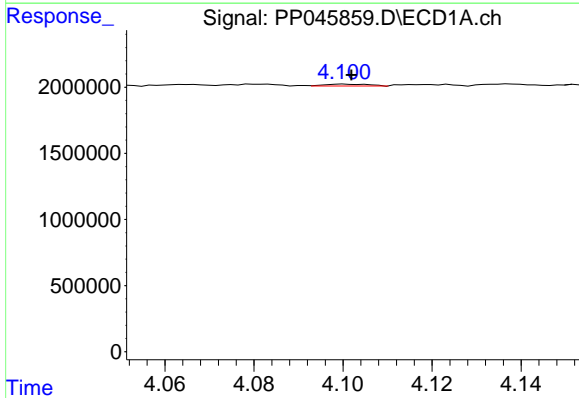
R.T.: 5.638 min  
 Delta R.T.: 0.000 min  
 Response: 6829300  
 Conc: 123.84 ng/ml

Instrument :  
 ECD\_P  
 ClientSampleId :



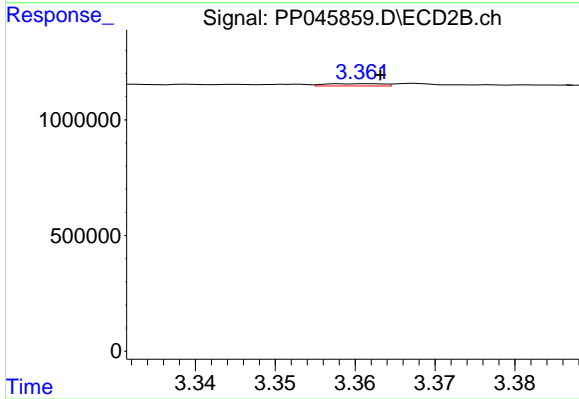
#7 AR-1016-5

R.T.: 4.750 min  
 Delta R.T.: 0.000 min  
 Response: 5735430  
 Conc: 120.73 ng/ml



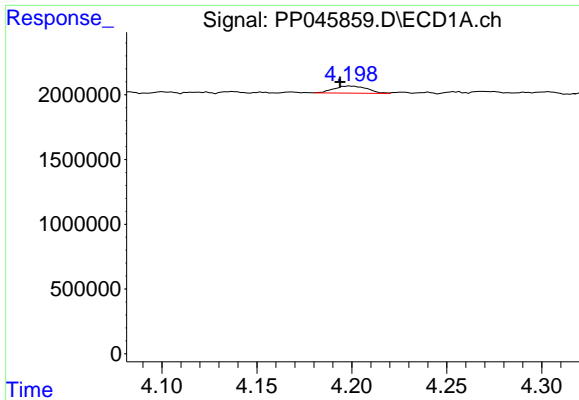
#8 AR-1221-1

R.T.: 4.100 min  
 Delta R.T.: -0.002 min  
 Response: 93973  
 Conc: 3.61 ng/ml



#8 AR-1221-1

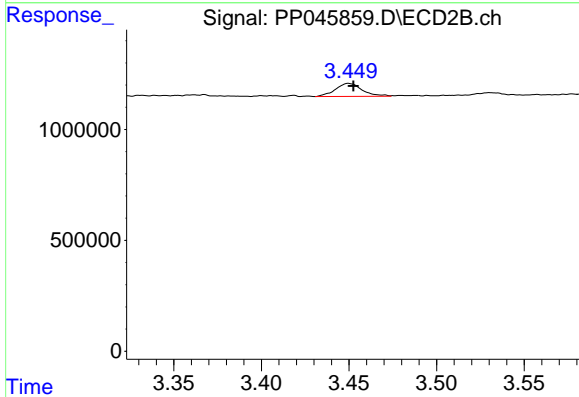
R.T.: 3.362 min  
 Delta R.T.: -0.002 min  
 Response: 48323  
 Conc: 2.38 ng/ml



#9 AR-1221-2

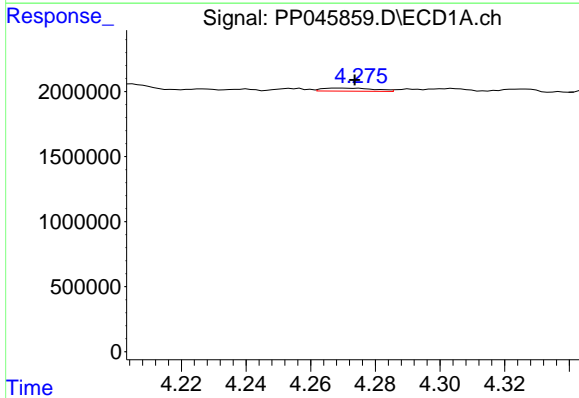
R.T.: 4.199 min  
 Delta R.T.: 0.005 min  
 Response: 678792  
 Conc: 35.69 ng/ml

Instrument :  
 ECD\_P  
 ClientSampleId :



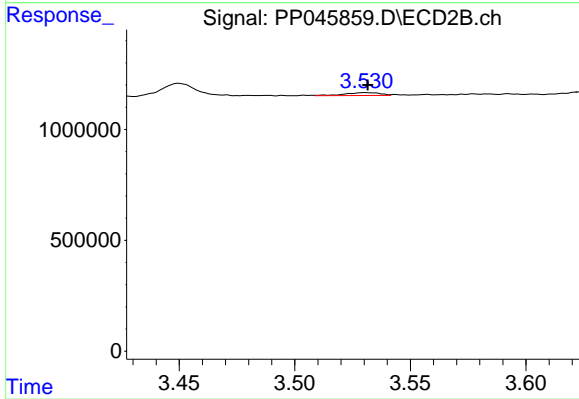
#9 AR-1221-2

R.T.: 3.450 min  
 Delta R.T.: -0.003 min  
 Response: 626737  
 Conc: 41.23 ng/ml



#10 AR-1221-3

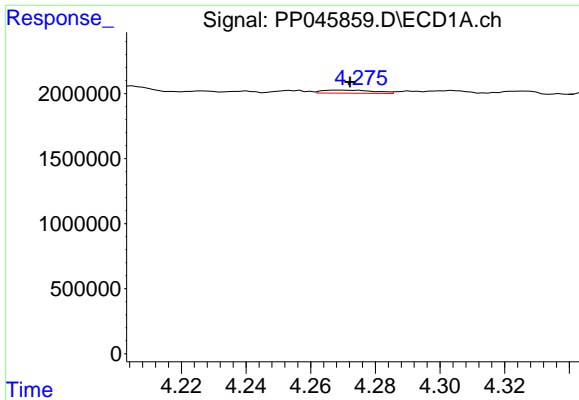
R.T.: 4.270 min  
 Delta R.T.: -0.004 min  
 Response: 262931  
 Conc: 4.28 ng/ml



#10 AR-1221-3

R.T.: 3.530 min  
 Delta R.T.: -0.001 min  
 Response: 144269  
 Conc: 3.13 ng/ml

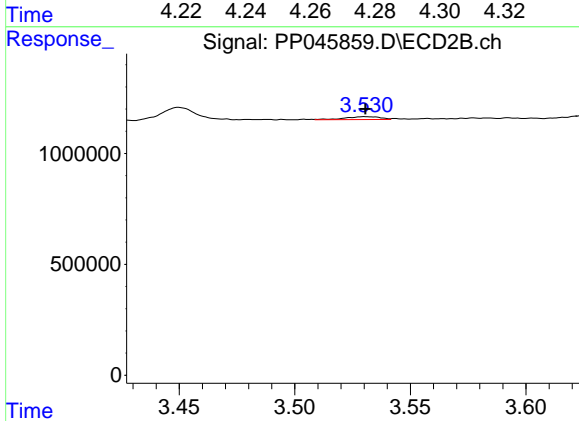




#11 AR-1232-1

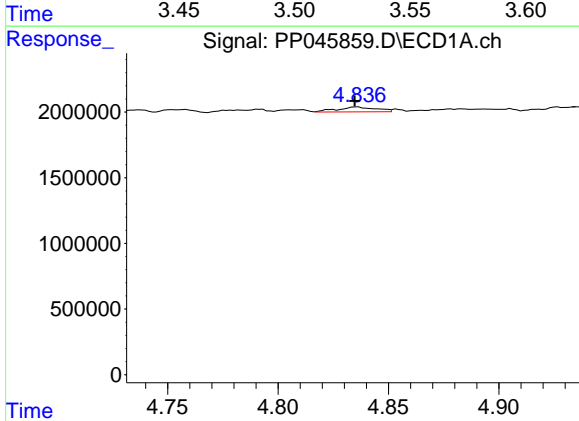
R.T.: 4.270 min  
 Delta R.T.: -0.002 min  
 Response: 262931  
 Conc: 4.63 ng/ml

Instrument :  
 ECD\_P  
 ClientSampleId :



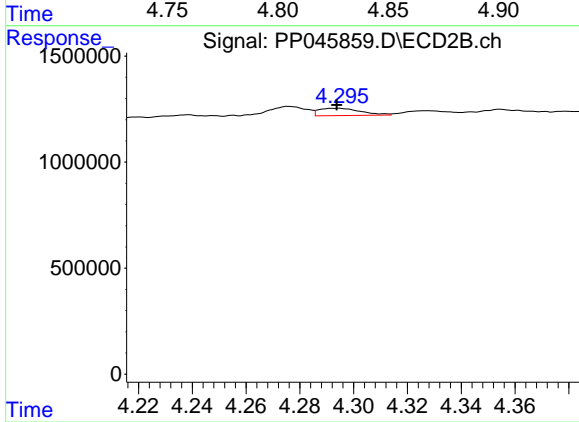
#11 AR-1232-1

R.T.: 3.530 min  
 Delta R.T.: 0.000 min  
 Response: 144269  
 Conc: 3.40 ng/ml



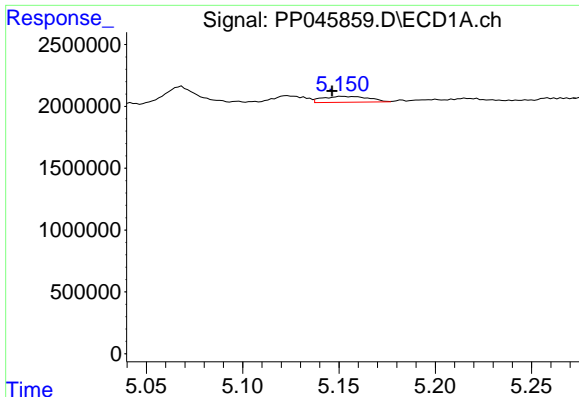
#12 AR-1232-2

R.T.: 4.836 min  
 Delta R.T.: 0.001 min  
 Response: 459830  
 Conc: 17.24 ng/ml



#12 AR-1232-2

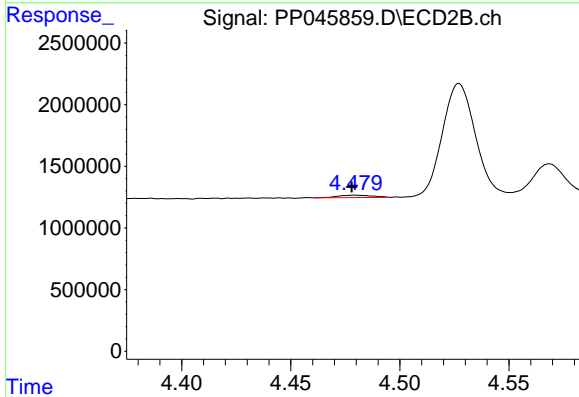
R.T.: 4.295 min  
 Delta R.T.: 0.000 min  
 Response: 369578  
 Conc: 9.22 ng/ml



#13 AR-1232-3

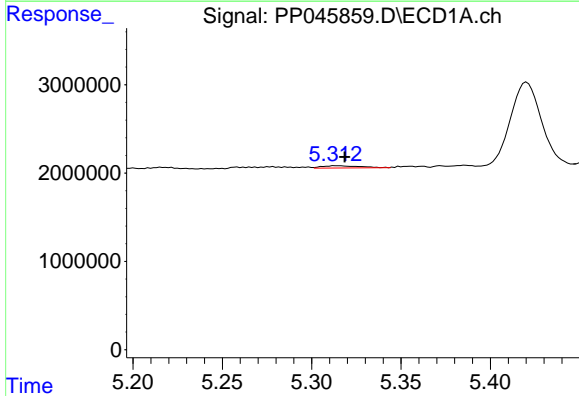
R.T.: 5.152 min  
 Delta R.T.: 0.006 min  
 Response: 789240  
 Conc: 14.66 ng/ml

Instrument :  
 ECD\_P  
 ClientSampleId :



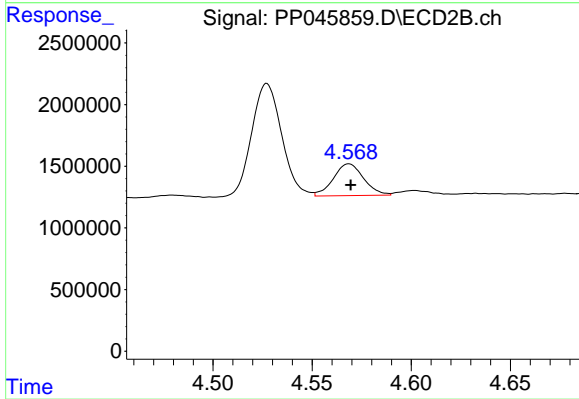
#13 AR-1232-3

R.T.: 4.479 min  
 Delta R.T.: 0.001 min  
 Response: 215519  
 Conc: 10.03 ng/ml



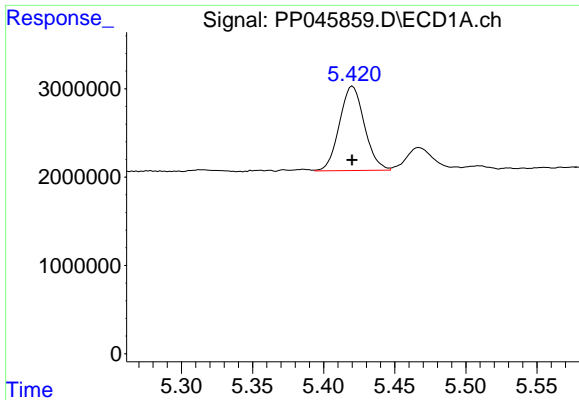
#14 AR-1232-4

R.T.: 5.314 min  
 Delta R.T.: -0.005 min  
 Response: 379320  
 Conc: 14.34 ng/ml



#14 AR-1232-4

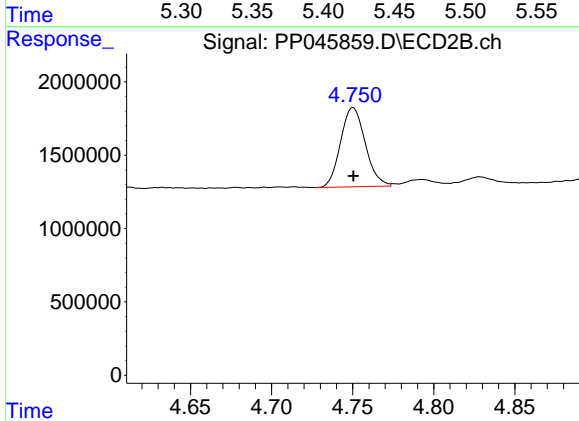
R.T.: 4.569 min  
 Delta R.T.: 0.000 min  
 Response: 2742153  
 Conc: 144.74 ng/ml



#15 AR-1232-5

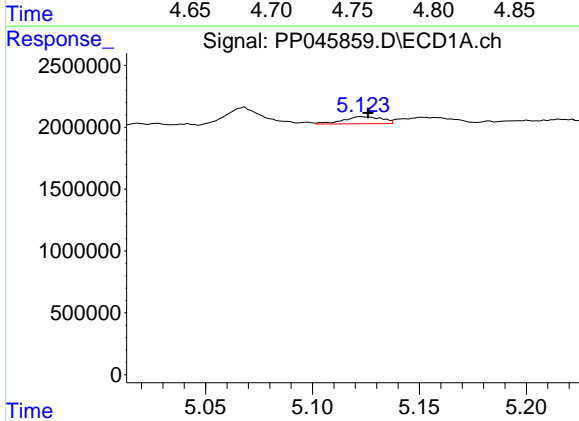
R.T.: 5.420 min  
 Delta R.T.: 0.000 min  
 Response: 11689881  
 Conc: 634.18 ng/ml

Instrument :  
 ECD\_P  
 ClientSampleId :



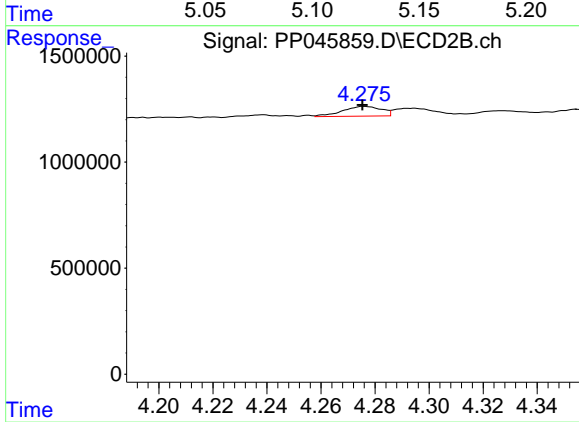
#15 AR-1232-5

R.T.: 4.750 min  
 Delta R.T.: 0.000 min  
 Response: 5735430  
 Conc: 268.21 ng/ml



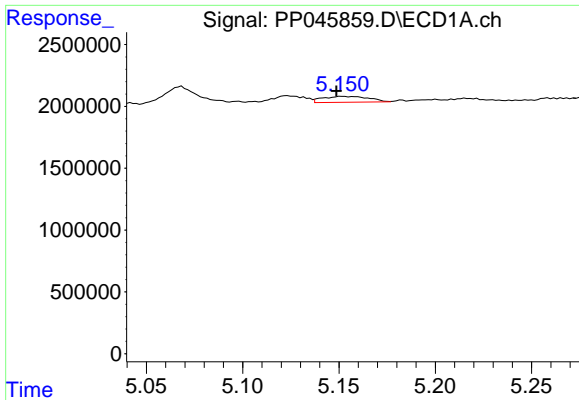
#16 AR-1242-1

R.T.: 5.123 min  
 Delta R.T.: -0.003 min  
 Response: 716211  
 Conc: 11.98 ng/ml



#16 AR-1242-1

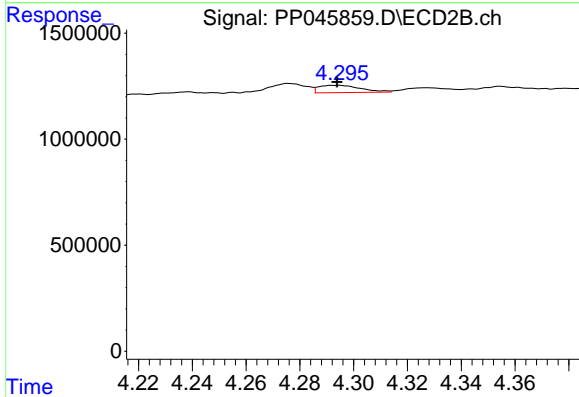
R.T.: 4.276 min  
 Delta R.T.: 0.000 min  
 Response: 457855  
 Conc: 9.90 ng/ml



#17 AR-1242-2

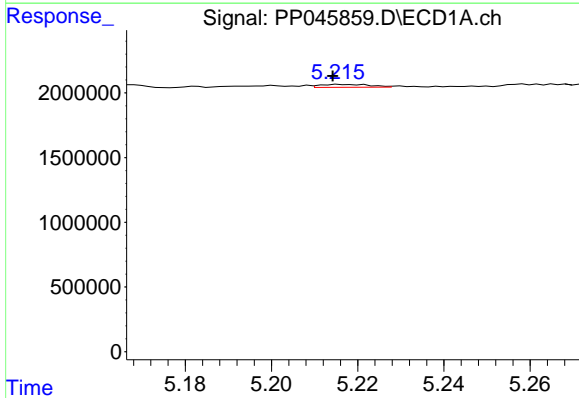
R.T.: 5.152 min  
 Delta R.T.: 0.004 min  
 Response: 789240  
 Conc: 8.79 ng/ml

Instrument :  
 ECD\_P  
 ClientSampleId :



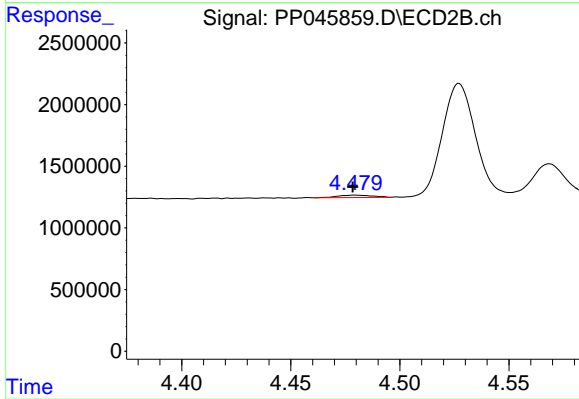
#17 AR-1242-2

R.T.: 4.295 min  
 Delta R.T.: 0.000 min  
 Response: 369578  
 Conc: 5.70 ng/ml



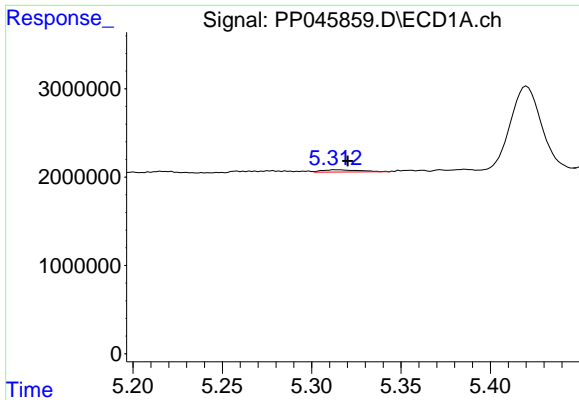
#18 AR-1242-3

R.T.: 5.215 min  
 Delta R.T.: 0.001 min  
 Response: 183965  
 Conc: 3.32 ng/ml



#18 AR-1242-3

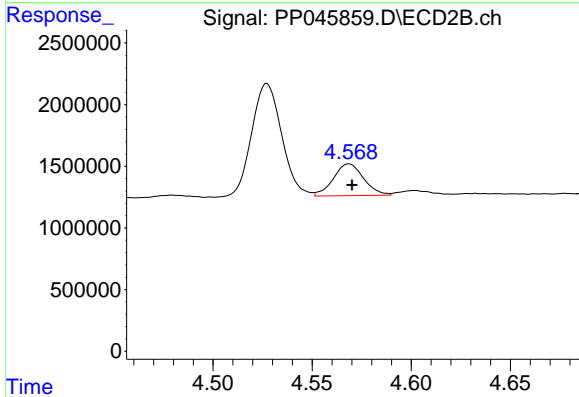
R.T.: 4.479 min  
 Delta R.T.: 0.000 min  
 Response: 215519  
 Conc: 6.23 ng/ml



#19 AR-1242-4

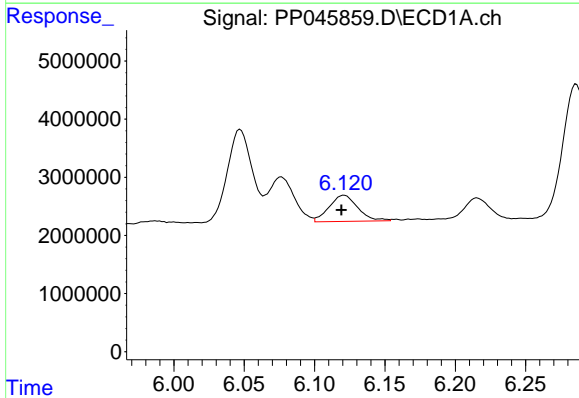
R.T.: 5.314 min  
 Delta R.T.: -0.006 min  
 Response: 379320  
 Conc: 8.36 ng/ml

Instrument :  
 ECD\_P  
 ClientSampleId :



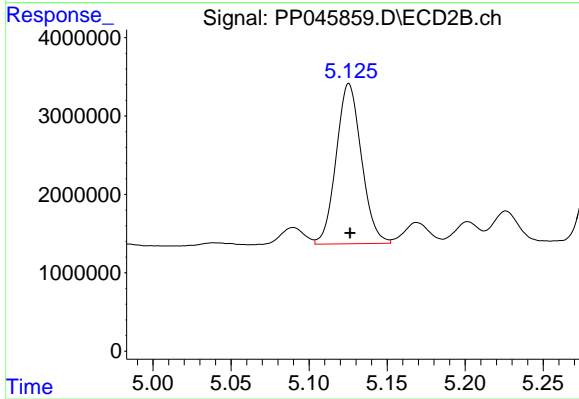
#19 AR-1242-4

R.T.: 4.569 min  
 Delta R.T.: -0.001 min  
 Response: 2742153  
 Conc: 81.58 ng/ml



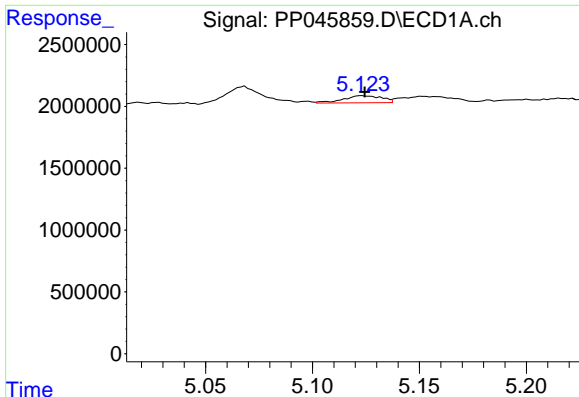
#20 AR-1242-5

R.T.: 6.121 min  
 Delta R.T.: 0.002 min  
 Response: 6371067  
 Conc: 137.17 ng/ml



#20 AR-1242-5

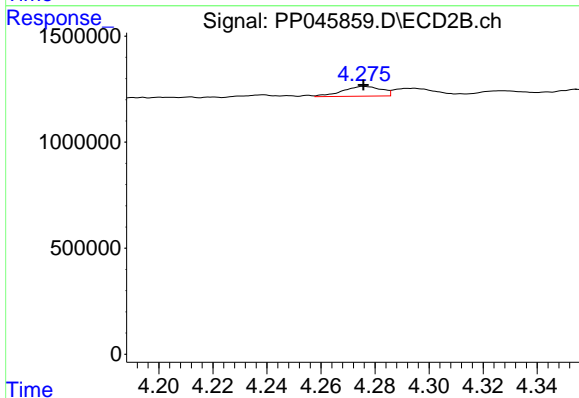
R.T.: 5.126 min  
 Delta R.T.: 0.000 min  
 Response: 23000472  
 Conc: 523.71 ng/ml



#21 AR-1248-1

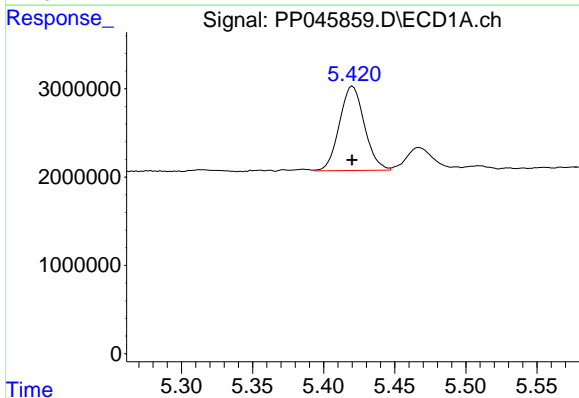
R.T.: 5.123 min  
 Delta R.T.: -0.001 min  
 Response: 716211  
 Conc: 16.60 ng/ml

Instrument :  
 ECD\_P  
 ClientSampleId :



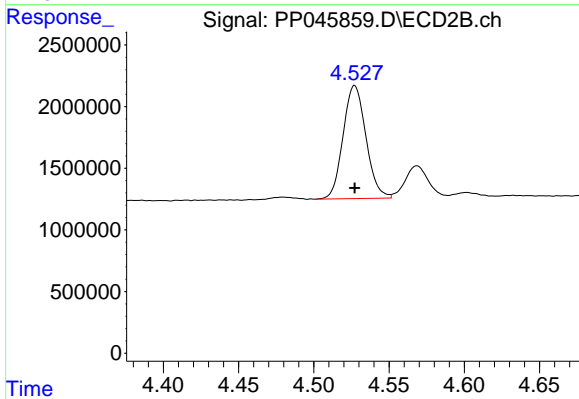
#21 AR-1248-1

R.T.: 4.276 min  
 Delta R.T.: 0.000 min  
 Response: 457855  
 Conc: 13.35 ng/ml



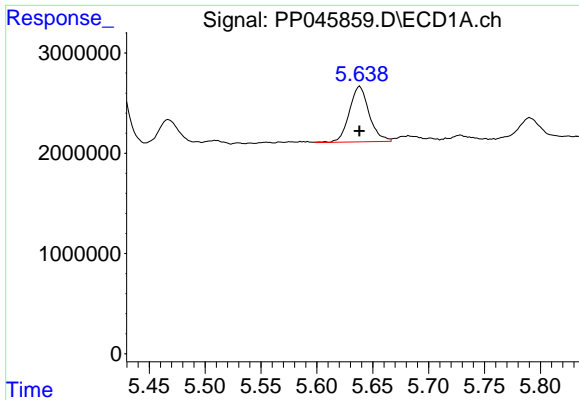
#22 AR-1248-2

R.T.: 5.420 min  
 Delta R.T.: 0.000 min  
 Response: 11689881  
 Conc: 195.54 ng/ml



#22 AR-1248-2

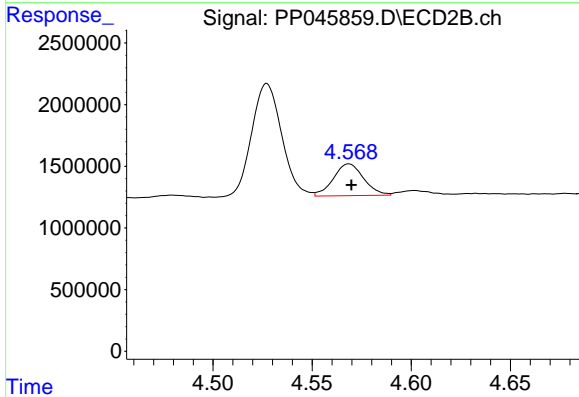
R.T.: 4.527 min  
 Delta R.T.: 0.000 min  
 Response: 9697956  
 Conc: 207.01 ng/ml



#23 AR-1248-3

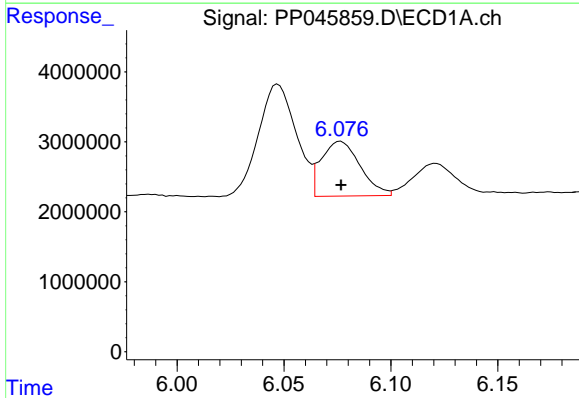
R.T.: 5.638 min  
 Delta R.T.: 0.000 min  
 Response: 6829300  
 Conc: 97.63 ng/ml

Instrument :  
 ECD\_P  
 ClientSampleId :



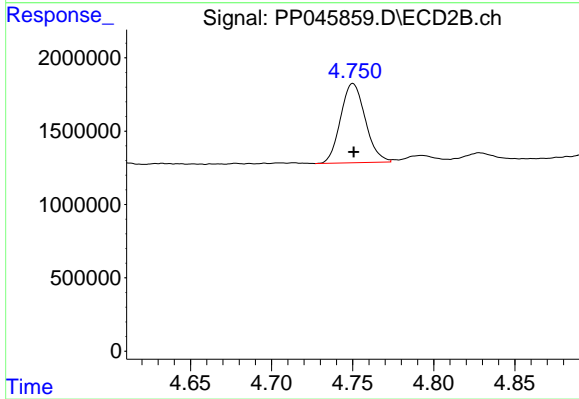
#23 AR-1248-3

R.T.: 4.569 min  
 Delta R.T.: -0.001 min  
 Response: 2742153  
 Conc: 56.10 ng/ml



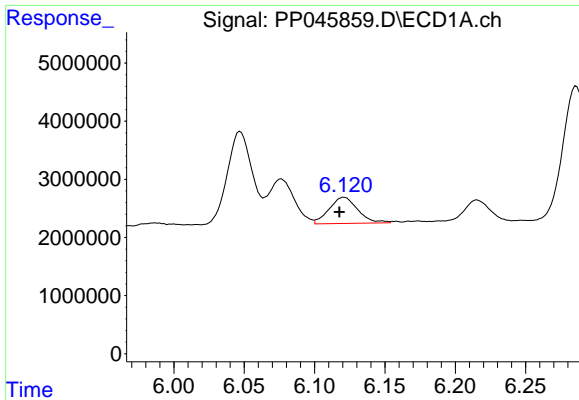
#24 AR-1248-4

R.T.: 6.076 min  
 Delta R.T.: 0.000 min  
 Response: 9896390  
 Conc: 125.17 ng/ml



#24 AR-1248-4

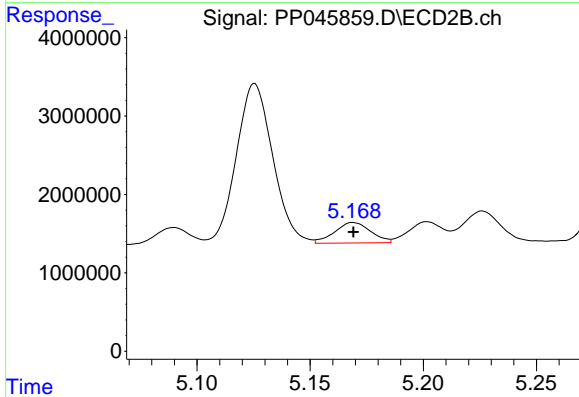
R.T.: 4.750 min  
 Delta R.T.: 0.000 min  
 Response: 5735430  
 Conc: 98.71 ng/ml



#25 AR-1248-5

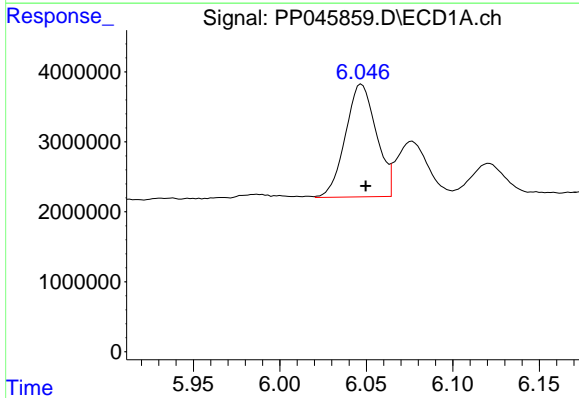
R.T.: 6.121 min  
 Delta R.T.: 0.004 min  
 Response: 6371067  
 Conc: 81.37 ng/ml

Instrument :  
 ECD\_P  
 ClientSampleId :



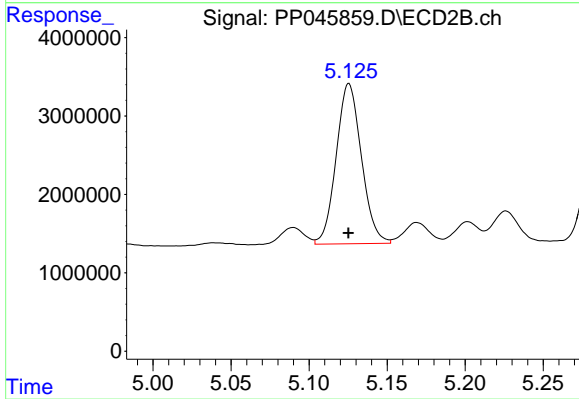
#25 AR-1248-5

R.T.: 5.169 min  
 Delta R.T.: 0.000 min  
 Response: 2906396  
 Conc: 49.52 ng/ml



#26 AR-1254-1

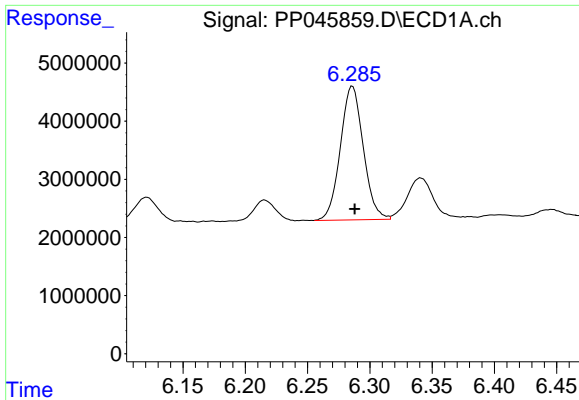
R.T.: 6.047 min  
 Delta R.T.: -0.002 min  
 Response: 19972126  
 Conc: 241.65 ng/ml



#26 AR-1254-1

R.T.: 5.126 min  
 Delta R.T.: 0.000 min  
 Response: 23000472  
 Conc: 260.75 ng/ml

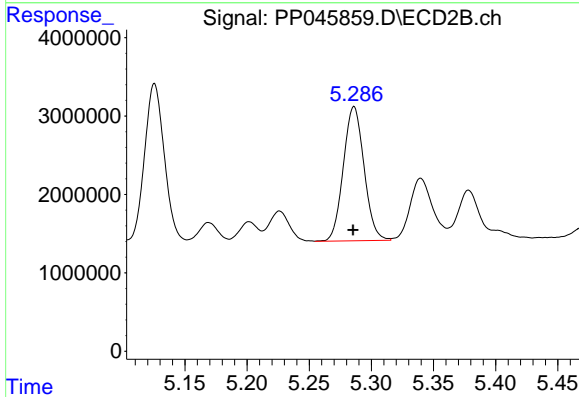




#27 AR-1254-2

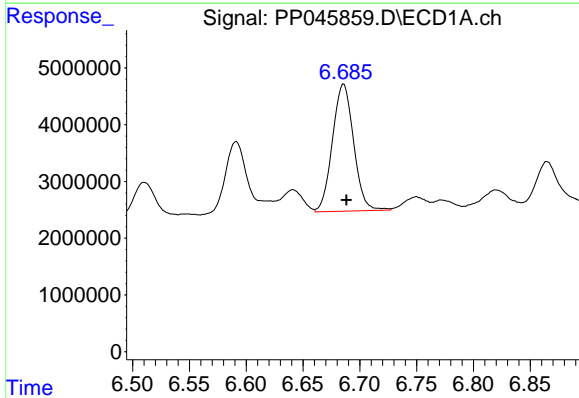
R.T.: 6.286 min  
 Delta R.T.: -0.002 min  
 Response: 29598186  
 Conc: 240.35 ng/ml

Instrument :  
 ECD\_P  
 ClientSampleId :



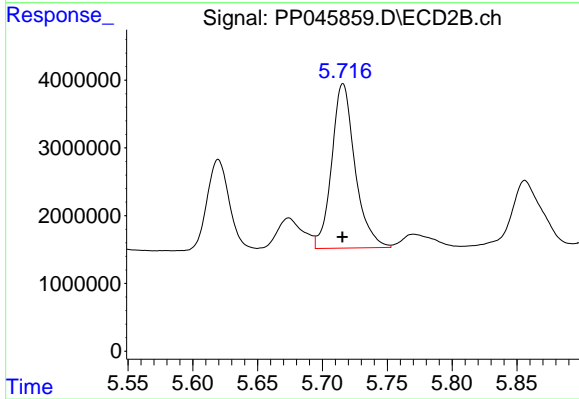
#27 AR-1254-2

R.T.: 5.286 min  
 Delta R.T.: 0.000 min  
 Response: 19858119  
 Conc: 263.12 ng/ml



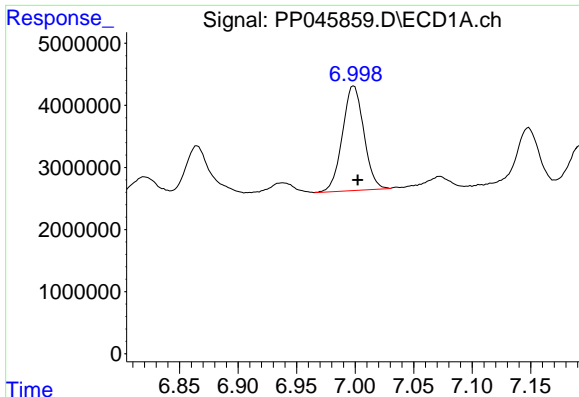
#28 AR-1254-3

R.T.: 6.686 min  
 Delta R.T.: -0.002 min  
 Response: 29083926  
 Conc: 241.95 ng/ml



#28 AR-1254-3

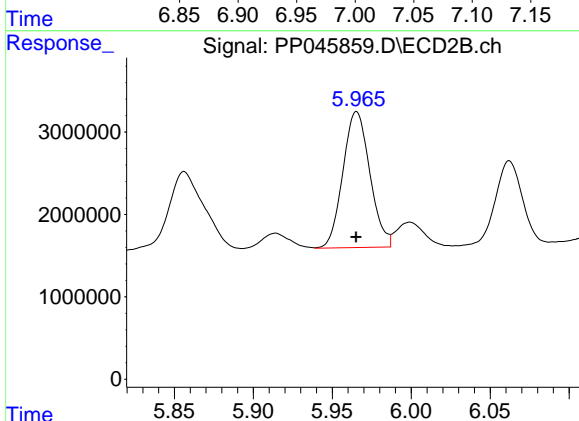
R.T.: 5.716 min  
 Delta R.T.: 0.000 min  
 Response: 30412364  
 Conc: 258.59 ng/ml



#29 AR-1254-4

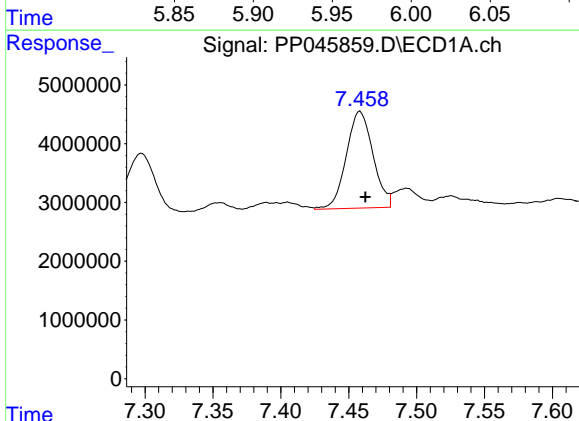
R.T.: 6.999 min  
 Delta R.T.: -0.003 min  
 Response: 21431834  
 Conc: 243.00 ng/ml

Instrument :  
 ECD\_P  
 ClientSampleId :



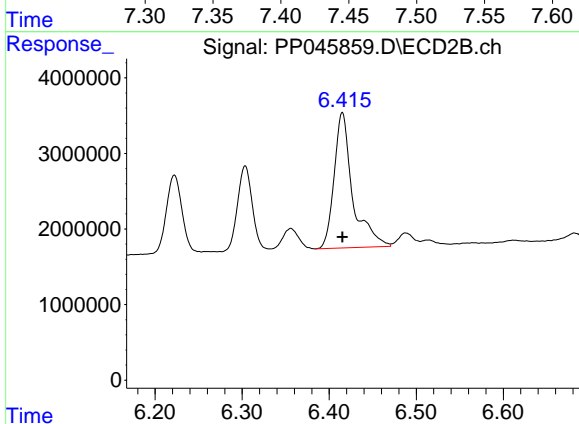
#29 AR-1254-4

R.T.: 5.965 min  
 Delta R.T.: 0.000 min  
 Response: 19625528  
 Conc: 260.06 ng/ml



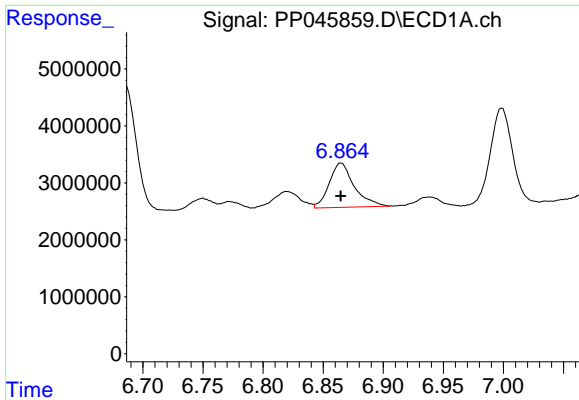
#30 AR-1254-5

R.T.: 7.458 min  
 Delta R.T.: -0.004 min  
 Response: 22503561  
 Conc: 240.22 ng/ml



#30 AR-1254-5

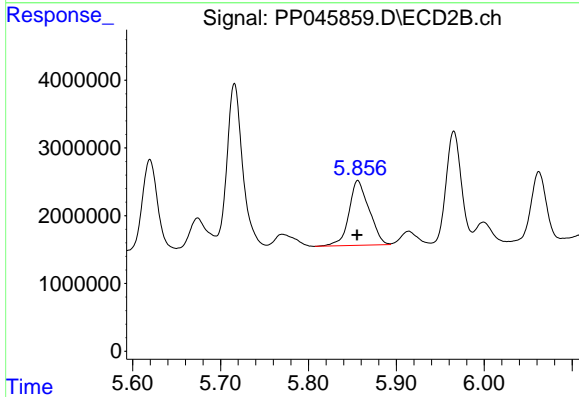
R.T.: 6.415 min  
 Delta R.T.: 0.000 min  
 Response: 26575409  
 Conc: 259.39 ng/ml



#31 AR-1260-1

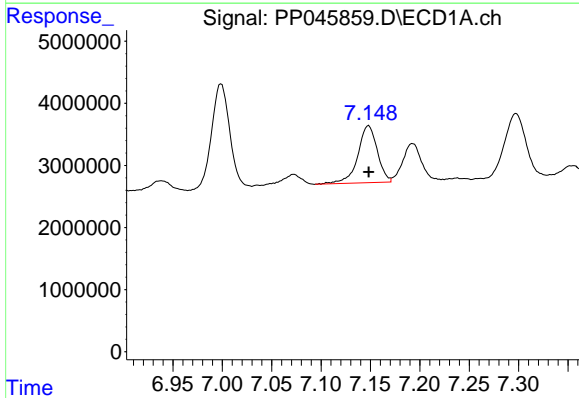
R.T.: 6.865 min  
 Delta R.T.: 0.000 min  
 Response: 11282504  
 Conc: 127.81 ng/ml

Instrument :  
 ECD\_P  
 ClientSampleId :



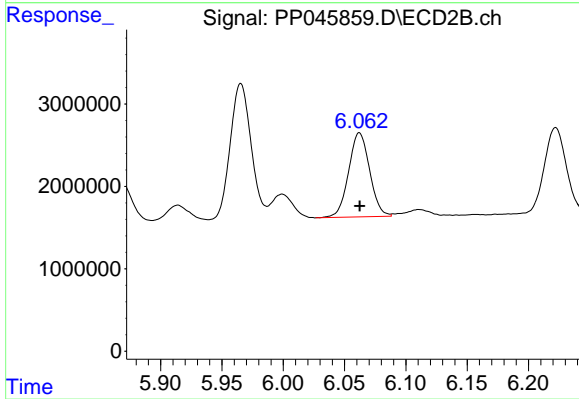
#31 AR-1260-1

R.T.: 5.856 min  
 Delta R.T.: 0.000 min  
 Response: 15163323  
 Conc: 191.58 ng/ml



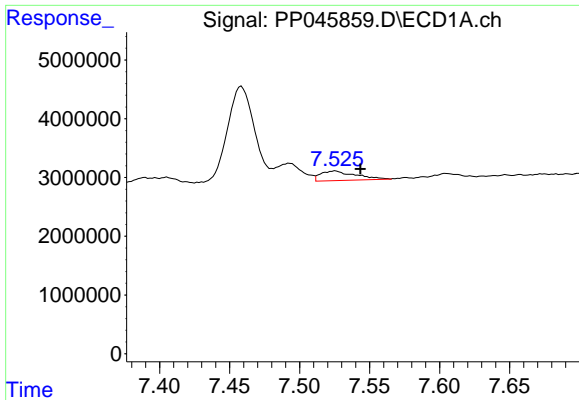
#32 AR-1260-2

R.T.: 7.148 min  
 Delta R.T.: 0.000 min  
 Response: 12617573  
 Conc: 123.16 ng/ml



#32 AR-1260-2

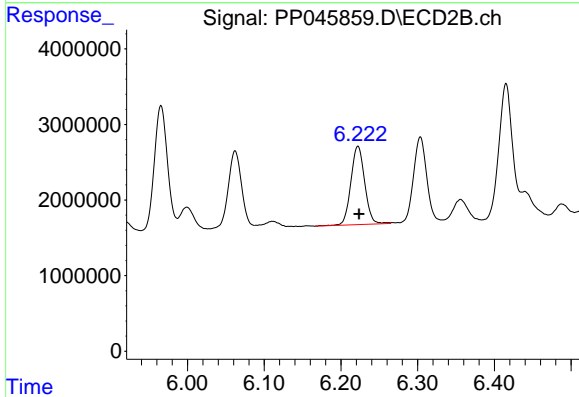
R.T.: 6.062 min  
 Delta R.T.: 0.000 min  
 Response: 12181305  
 Conc: 130.13 ng/ml



#33 AR-1260-3

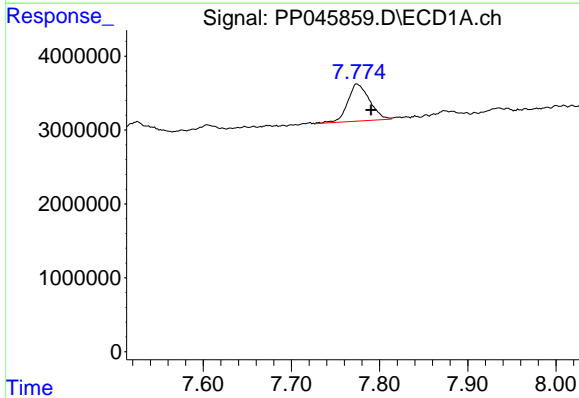
R.T.: 7.526 min  
 Delta R.T.: -0.018 min  
 Response: 2817203  
 Conc: 34.20 ng/ml

Instrument :  
 ECD\_P  
 ClientSampleId :



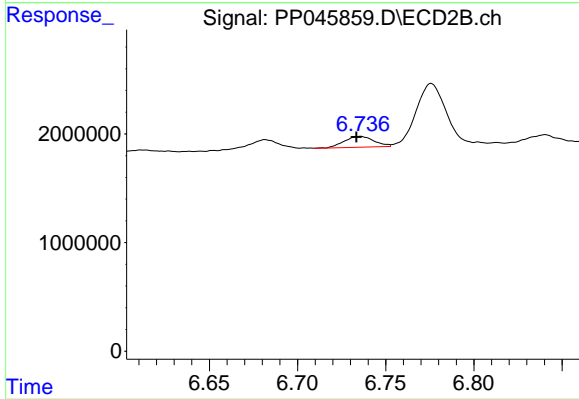
#33 AR-1260-3

R.T.: 6.222 min  
 Delta R.T.: -0.002 min  
 Response: 13087965  
 Conc: 147.75 ng/ml



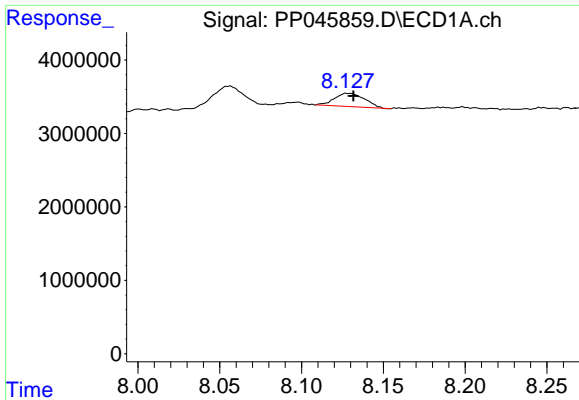
#34 AR-1260-4

R.T.: 7.774 min  
 Delta R.T.: -0.016 min  
 Response: 8616120  
 Conc: 101.68 ng/ml



#34 AR-1260-4

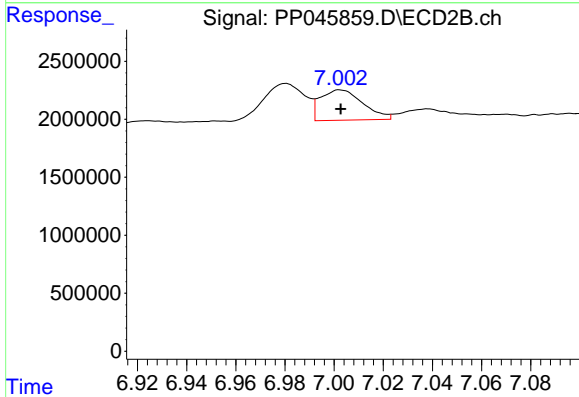
R.T.: 6.735 min  
 Delta R.T.: 0.002 min  
 Response: 1191003  
 Conc: 16.59 ng/ml



#35 AR-1260-5

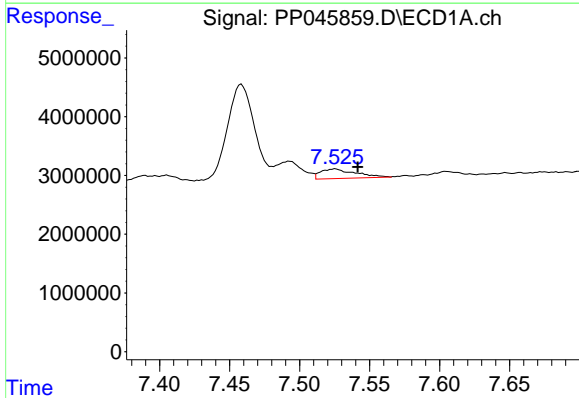
R.T.: 8.129 min  
 Delta R.T.: -0.003 min  
 Response: 2308088  
 Conc: 14.05 ng/ml

Instrument :  
 ECD\_P  
 ClientSampleId :



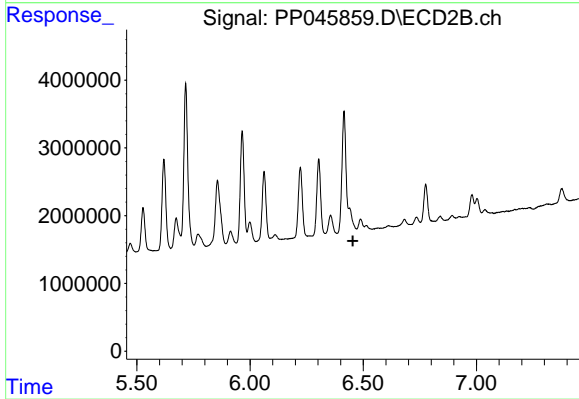
#35 AR-1260-5

R.T.: 7.003 min  
 Delta R.T.: 0.000 min  
 Response: 3140203  
 Conc: 18.49 ng/ml



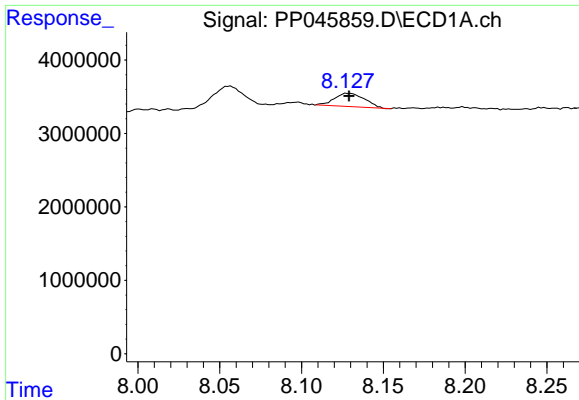
#36 AR-1262-1

R.T.: 7.526 min  
 Delta R.T.: -0.016 min  
 Response: 2817203  
 Conc: 24.48 ng/ml



#36 AR-1262-1

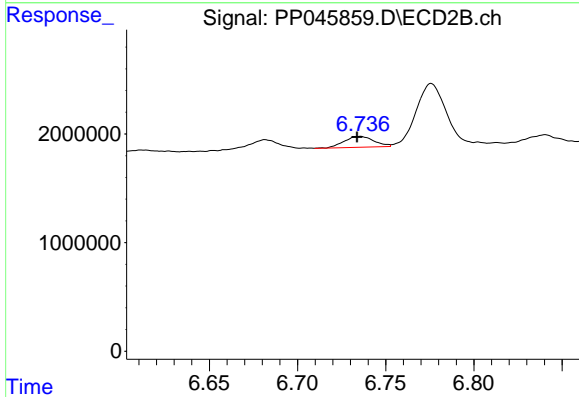
R.T.: 0.000 min  
 Exp R.T.: 6.455 min  
 Response: 0  
 Conc: N.D.



#37 AR-1262-2

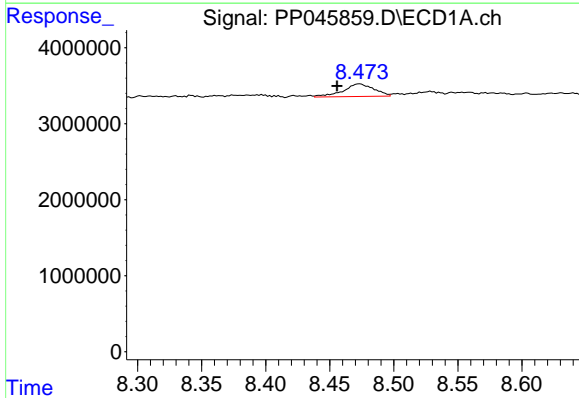
R.T.: 8.129 min  
 Delta R.T.: 0.000 min  
 Response: 2308088  
 Conc: 12.88 ng/ml

Instrument :  
 ECD\_P  
 ClientSampleId :



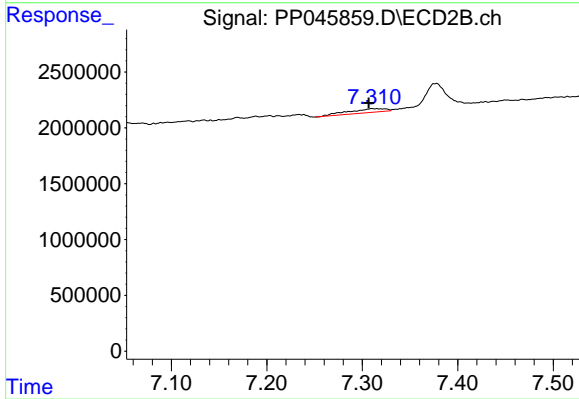
#37 AR-1262-2

R.T.: 6.735 min  
 Delta R.T.: 0.002 min  
 Response: 1191003  
 Conc: 12.65 ng/ml



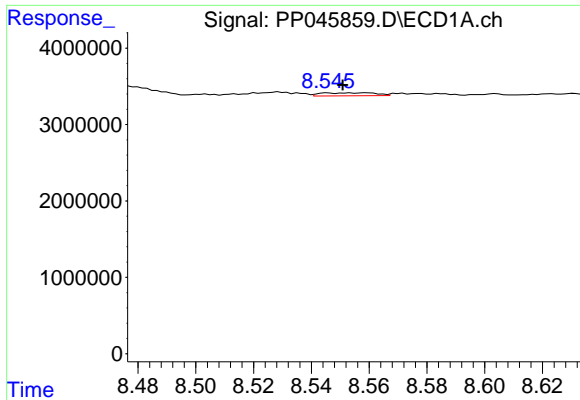
#38 AR-1262-3

R.T.: 8.473 min  
 Delta R.T.: 0.018 min  
 Response: 2795529  
 Conc: 21.45 ng/ml



#38 AR-1262-3

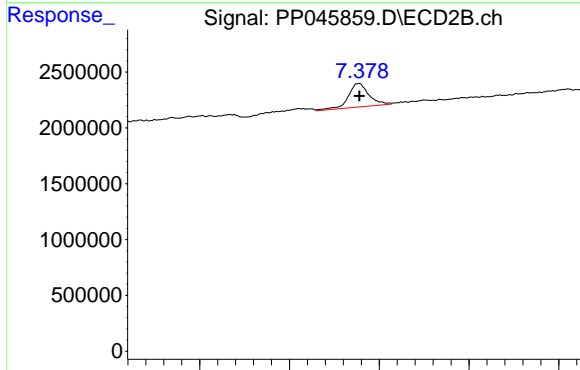
R.T.: 7.310 min  
 Delta R.T.: 0.003 min  
 Response: 905379  
 Conc: 11.83 ng/ml



#39 AR-1262-4

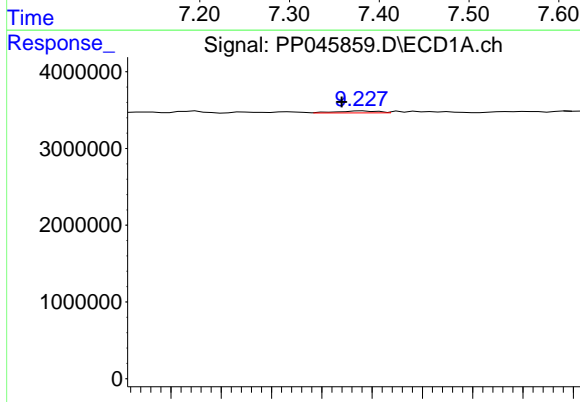
R.T.: 8.546 min  
 Delta R.T.: -0.005 min  
 Response: 529242  
 Conc: 8.40 ng/ml

Instrument :  
 ECD\_P  
 ClientSampleId :



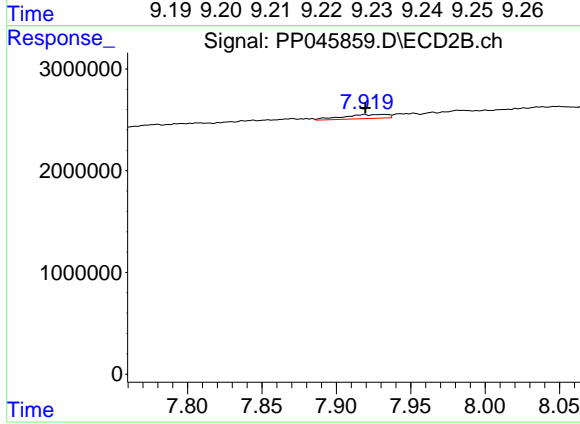
#39 AR-1262-4

R.T.: 7.377 min  
 Delta R.T.: 0.000 min  
 Response: 3335167  
 Conc: 23.44 ng/ml



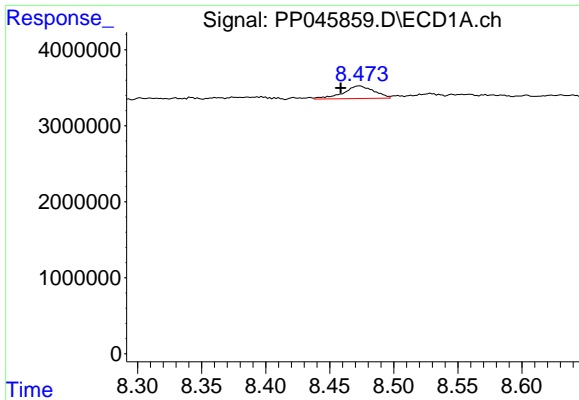
#40 AR-1262-5

R.T.: 9.228 min  
 Delta R.T.: 0.004 min  
 Response: 149539  
 Conc: 2.19 ng/ml



#40 AR-1262-5

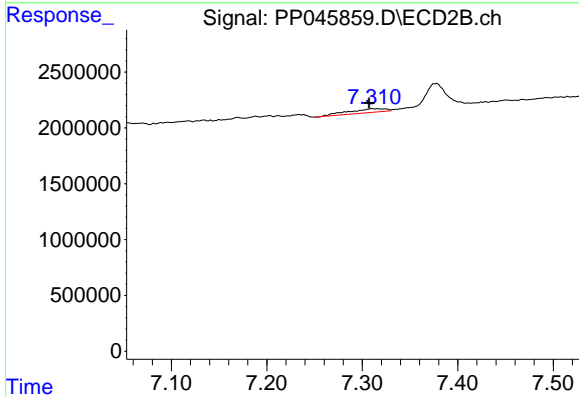
R.T.: 7.919 min  
 Delta R.T.: 0.000 min  
 Response: 815431  
 Conc: 11.64 ng/ml



#41 AR-1268-1

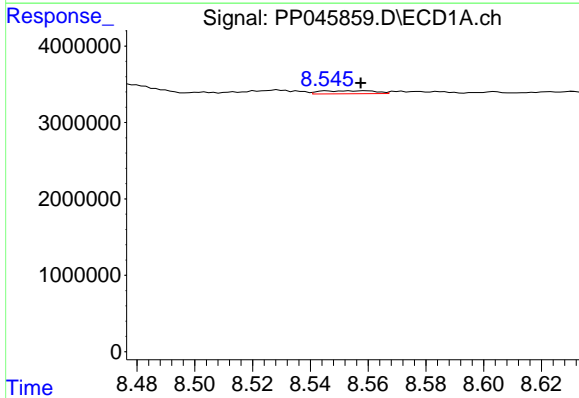
R.T.: 8.473 min  
 Delta R.T.: 0.015 min  
 Response: 2795529  
 Conc: 10.28 ng/ml

Instrument :  
 ECD\_P  
 ClientSampleId :



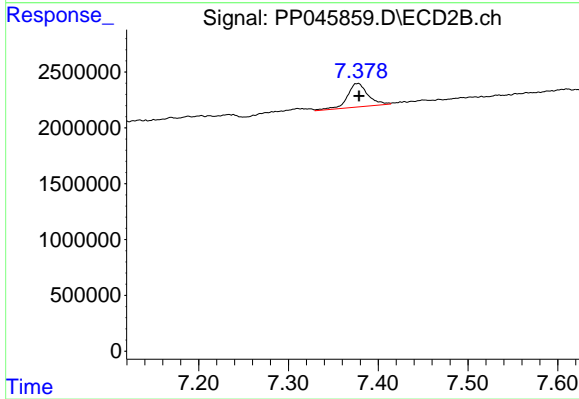
#41 AR-1268-1

R.T.: 7.310 min  
 Delta R.T.: 0.003 min  
 Response: 905379  
 Conc: 4.08 ng/ml



#42 AR-1268-2

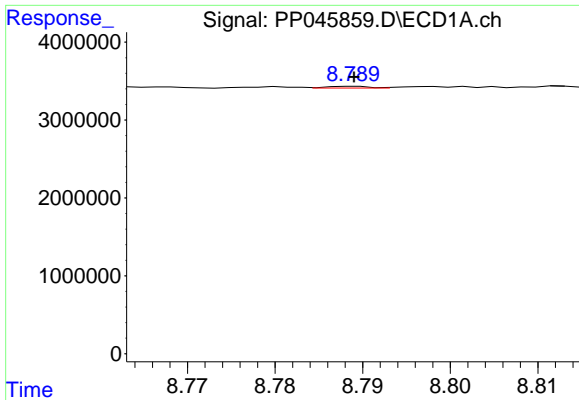
R.T.: 8.546 min  
 Delta R.T.: -0.012 min  
 Response: 529242  
 Conc: 2.09 ng/ml



#42 AR-1268-2

R.T.: 7.377 min  
 Delta R.T.: -0.002 min  
 Response: 3335167  
 Conc: 16.46 ng/ml

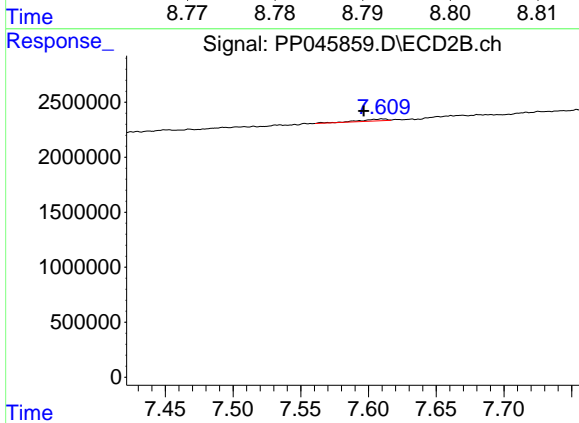




#43 AR-1268-3

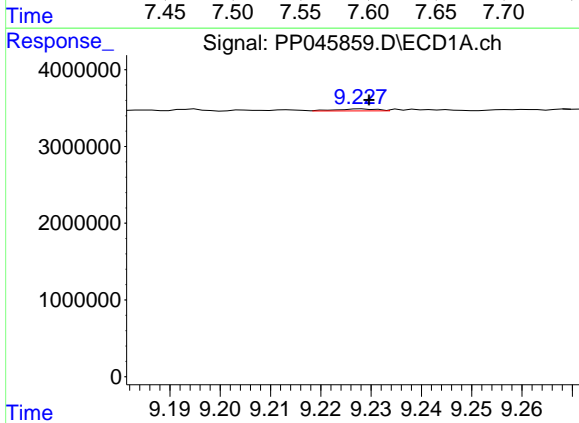
R.T.: 8.789 min  
 Delta R.T.: 0.000 min  
 Response: 76885  
 Conc: 0.34 ng/ml

Instrument :  
 ECD\_P  
 ClientSampleId :



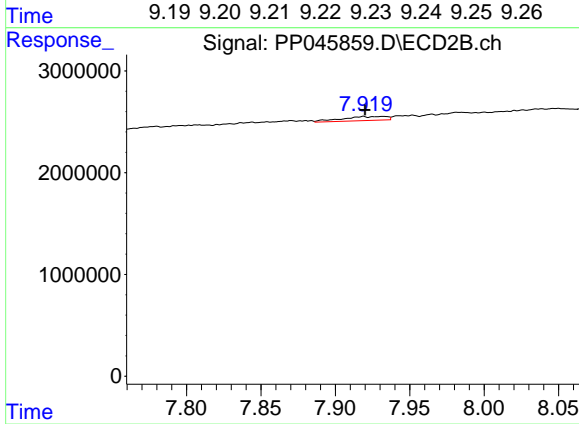
#43 AR-1268-3

R.T.: 7.610 min  
 Delta R.T.: 0.014 min  
 Response: 240284  
 Conc: 1.41 ng/ml



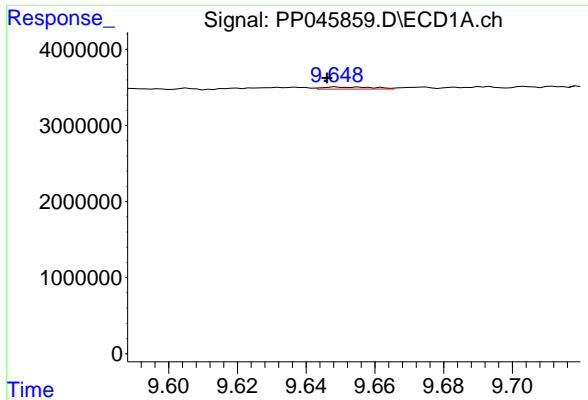
#44 AR-1268-4

R.T.: 9.228 min  
 Delta R.T.: -0.001 min  
 Response: 149539  
 Conc: 1.66 ng/ml



#44 AR-1268-4

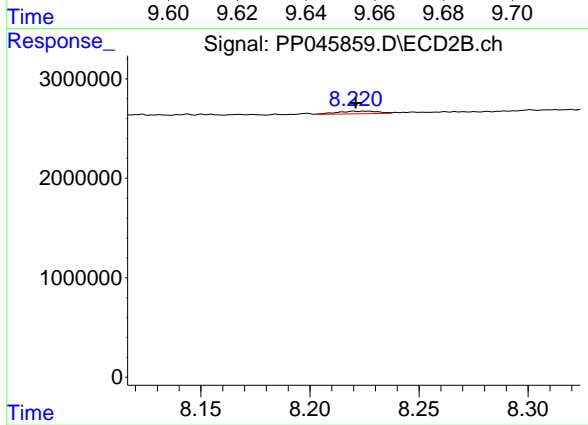
R.T.: 7.919 min  
 Delta R.T.: -0.001 min  
 Response: 815431  
 Conc: 10.33 ng/ml



#45 AR-1268-5

R.T.: 9.649 min  
 Delta R.T.: 0.003 min  
 Response: 282342  
 Conc: 0.42 ng/ml

Instrument :  
 ECD\_P  
 ClientSampleId :



#45 AR-1268-5

R.T.: 8.221 min  
 Delta R.T.: 0.000 min  
 Response: 344228  
 Conc: 0.62 ng/ml