

Data Path : Z:\pestpcbsrv\HPCHEM1\ECD_P\Data\PP041222\
 Data File : PP045839.D
 Signal(s) : Signal #1: ECD1A.ch Signal #2: ECD2B.ch
 Acq On : 11 Apr 2022 19:53
 Operator : YP\AJ
 Sample : AR1660ICC1000
 Misc :
 ALS Vial : 3 Sample Multiplier: 1

Instrument :
 ECD_P
 ClientSampleId :
 AR1660ICC1000

Integration File signal 1: autoint1.e
 Integration File signal 2: autoint2.e
 Quant Time: Apr 12 04:00:16 2022
 Quant Method : Z:\pestpcbsrv\HPCHEM1\ECD_P\methods\PP041222.M
 Quant Title : GC EXTRACTABLES
 QLast Update : Tue Apr 12 04:00:07 2022
 Response via : Initial Calibration
 Integrator: ChemStation

Volume Inj. : 2 µl
 Signal #1 Phase : ZB-MR2 Signal #2 Phase: ZB-MR2
 Signal #1 Info : 30Mx0.32mmx 0.50µ Signal #2 Info : 30M x 0.32mm x 0.25µm

Compound	RT#1	RT#2	Resp#1	Resp#2	ng/ml	ng/ml

System Monitoring Compounds						
1) SA Tetrachlo...	3.875	3.137	244.0E6	153.7E6	96.790	97.442
2) SA Decachlor...	9.978	8.477	144.0E6	135.0E6	96.116	95.893
Target Compounds						
3) L1 AR-1016-1	5.124	4.276	70071682	53274708	943.625	944.875
4) L1 AR-1016-2	5.147	4.294	106.7E6	78570302	946.334	963.005
5) L1 AR-1016-3	5.213	4.478	63650840	41740735	951.028	954.788
6) L1 AR-1016-4	5.319	4.527	53898252	32704094	950.892	943.517
7) L1 AR-1016-5	5.638	4.751	50112383	42489974	950.775	949.905
31) L7 AR-1260-1	6.865	5.856	77997612	72499160	953.708	957.519
32) L7 AR-1260-2	7.148	6.063	92447943	86142959	961.317	957.386
33) L7 AR-1260-3	7.543	6.224	74817088	81304600	965.444	959.188
34) L7 AR-1260-4	7.791	6.734	78786403	67635942	957.908	958.679
35) L7 AR-1260-5	8.131	7.003	150.0E6	163.7E6	966.703	968.916

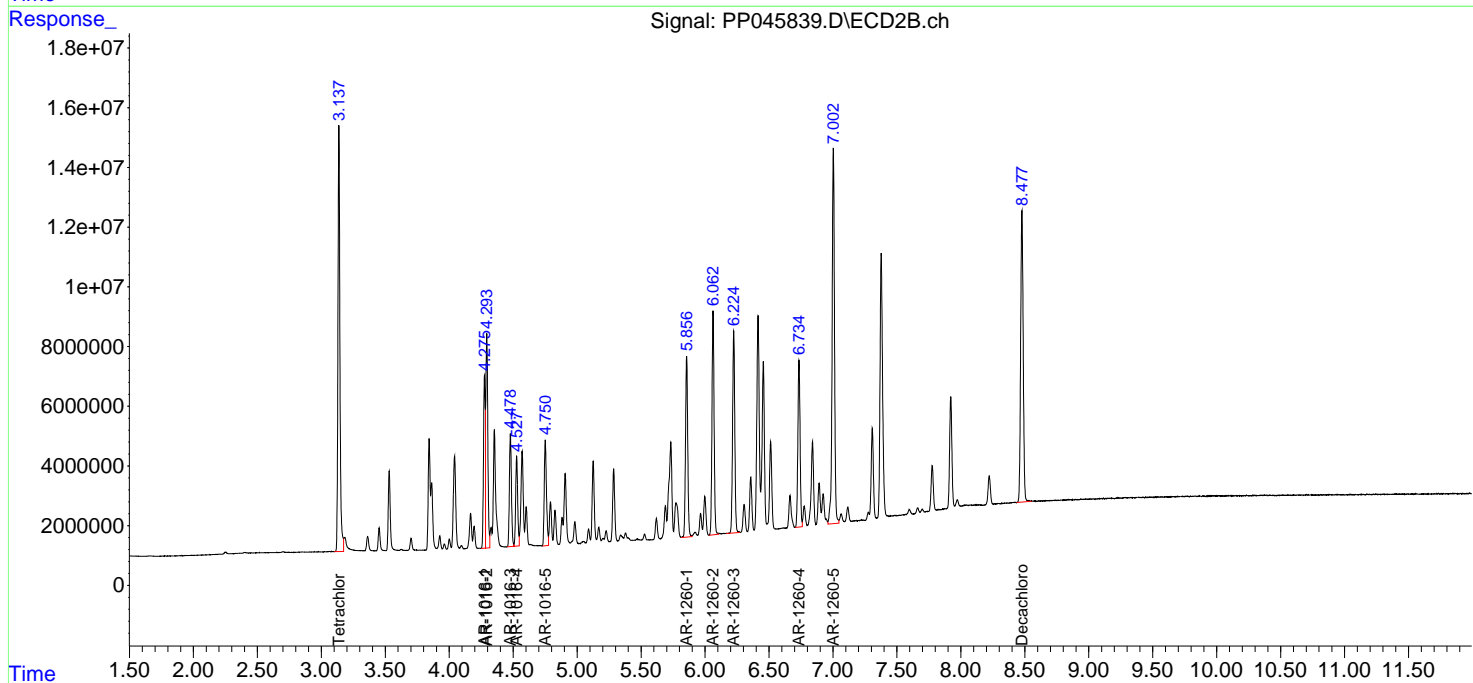
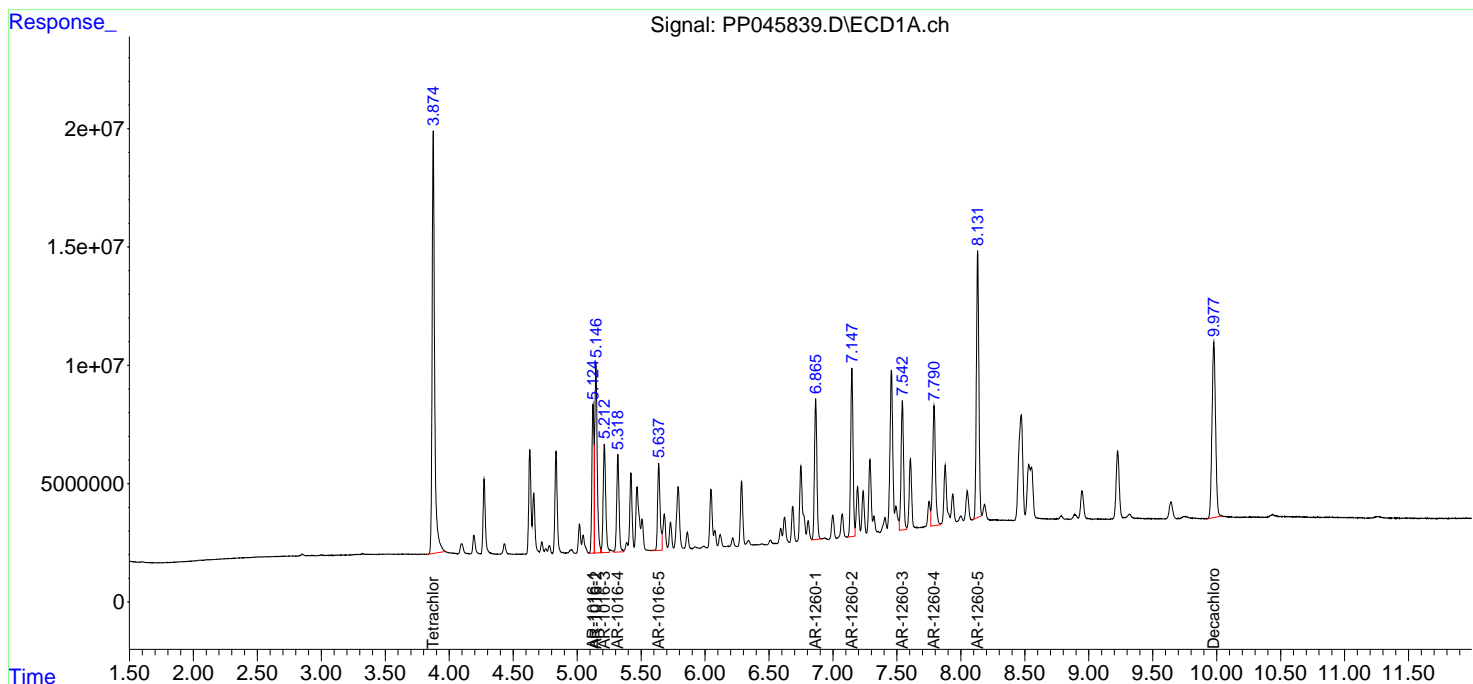
(f)=RT Delta > 1/2 Window (#)=Amounts differ by > 25% (m)=manual int.

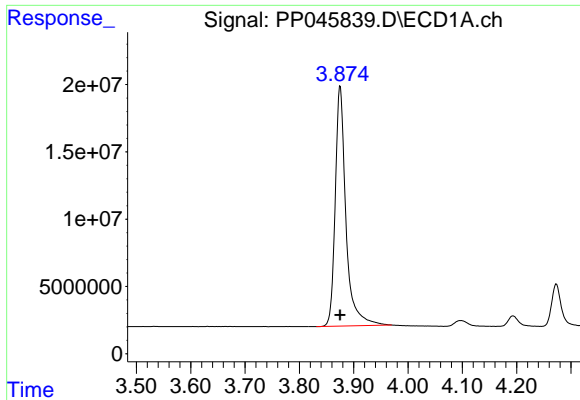
Data Path : Z:\pestpcbsrv\HPCHEM1\ECD_P\Data\PP041222\
 Data File : PP045839.D
 Signal(s) : Signal #1: ECD1A.ch Signal #2: ECD2B.ch
 Acq On : 11 Apr 2022 19:53
 Operator : YP\AJ
 Sample : AR1660ICC1000
 Misc :
 ALS Vial : 3 Sample Multiplier: 1

Instrument :
 ECD_P
 ClientSampleId :
 AR1660ICC1000

Integration File signal 1: autoint1.e
 Integration File signal 2: autoint2.e
 Quant Time: Apr 12 04:00:16 2022
 Quant Method : Z:\pestpcbsrv\HPCHEM1\ECD_P\methods\PP041222.M
 Quant Title : GC EXTRACTABLES
 QLast Update : Tue Apr 12 04:00:07 2022
 Response via : Initial Calibration
 Integrator: ChemStation

Volume Inj. : 2 µl
 Signal #1 Phase : ZB-MR1 Signal #2 Phase: ZB-MR2
 Signal #1 Info : 30Mx0.32mmx 0.50µ Signal #2 Info : 30M x 0.32mm x 0.25µm

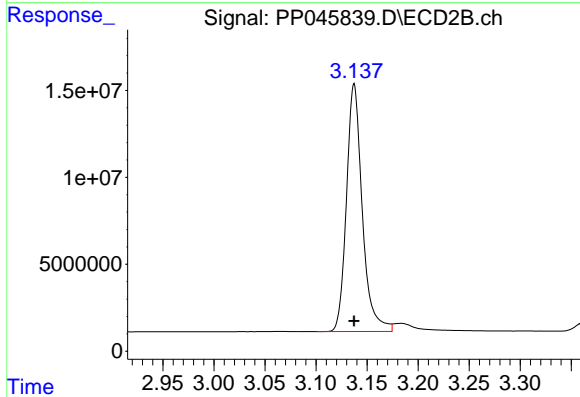




#1 Tetrachloro-m-xylene

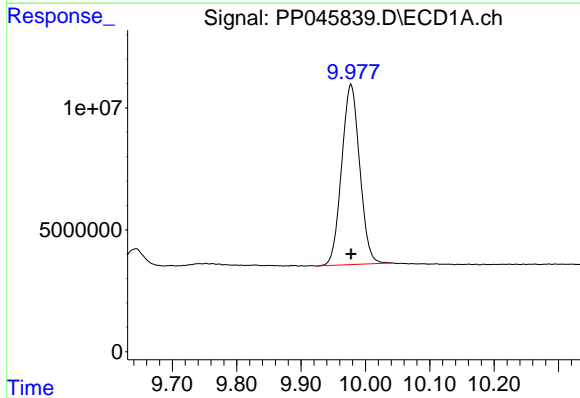
R.T.: 3.875 min
 Delta R.T.: 0.000 min
 Response: 243960743
 Conc: 96.79 ng/ml

Instrument :
 ECD_P
 ClientSampleId :
 AR1660ICC1000



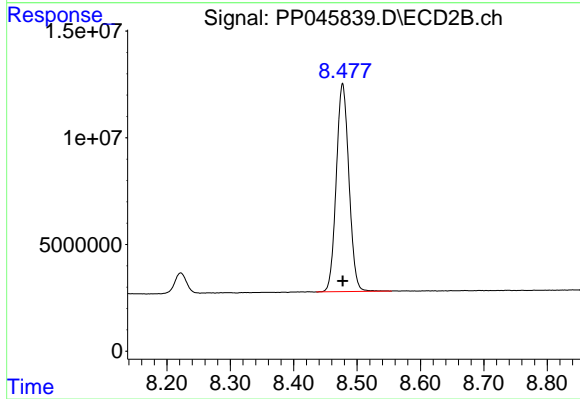
#1 Tetrachloro-m-xylene

R.T.: 3.137 min
 Delta R.T.: 0.000 min
 Response: 153745989
 Conc: 97.44 ng/ml



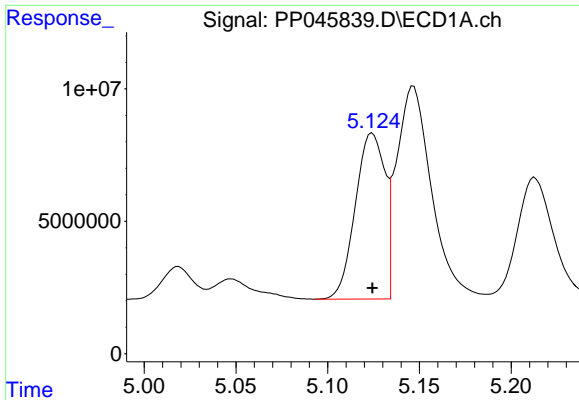
#2 Decachlorobiphenyl

R.T.: 9.978 min
 Delta R.T.: 0.000 min
 Response: 144030402
 Conc: 96.12 ng/ml



#2 Decachlorobiphenyl

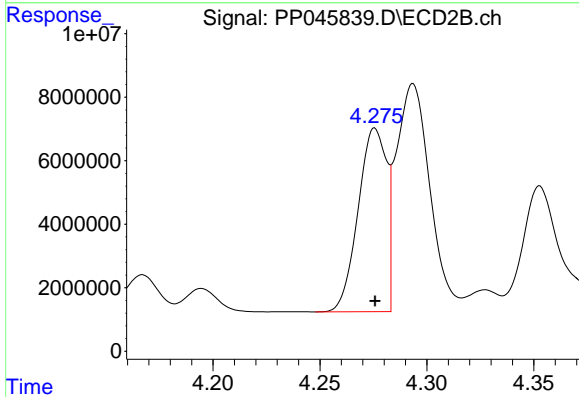
R.T.: 8.477 min
 Delta R.T.: 0.000 min
 Response: 134984712
 Conc: 95.89 ng/ml



#3 AR-1016-1

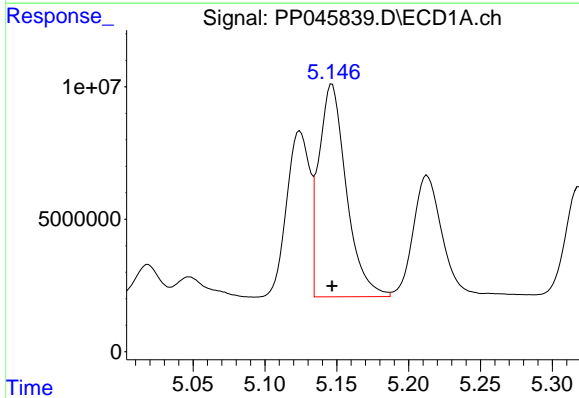
R.T.: 5.124 min
 Delta R.T.: 0.000 min
 Response: 70071682
 Conc: 943.63 ng/ml

Instrument :
 ECD_P
 ClientSampleId :
 AR1660ICC1000



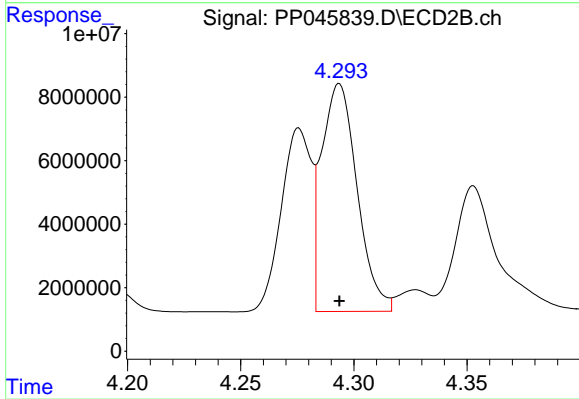
#3 AR-1016-1

R.T.: 4.276 min
 Delta R.T.: 0.000 min
 Response: 53274708
 Conc: 944.87 ng/ml



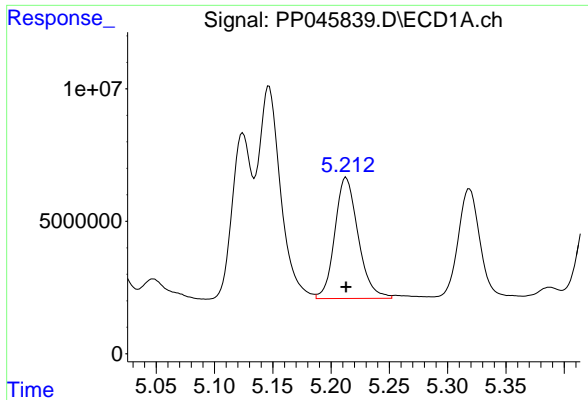
#4 AR-1016-2

R.T.: 5.147 min
 Delta R.T.: 0.000 min
 Response: 106682860
 Conc: 946.33 ng/ml



#4 AR-1016-2

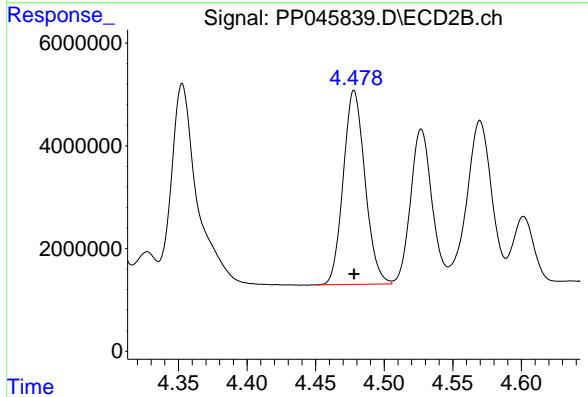
R.T.: 4.294 min
 Delta R.T.: 0.000 min
 Response: 78570302
 Conc: 963.00 ng/ml



#5 AR-1016-3

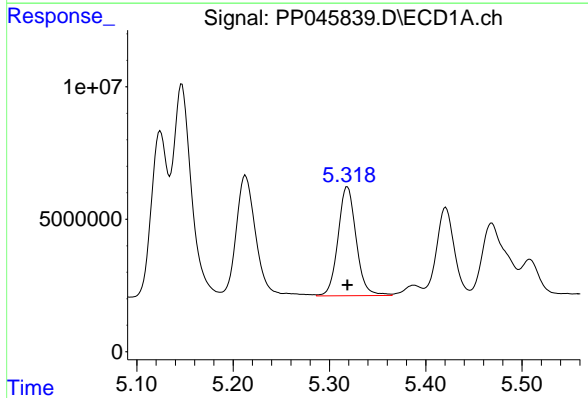
R.T.: 5.213 min
 Delta R.T.: 0.000 min
 Response: 63650840
 Conc: 951.03 ng/ml

Instrument :
 ECD_P
 ClientSampleId :
 AR1660ICC1000



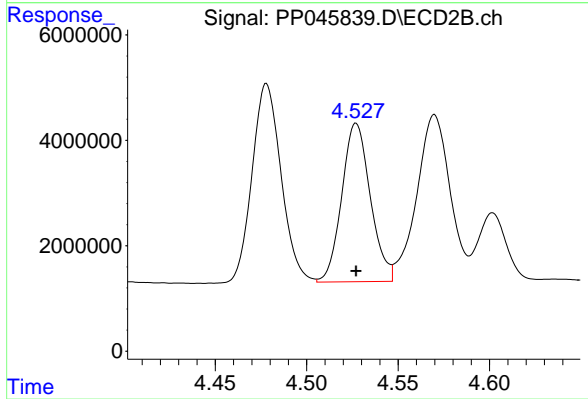
#5 AR-1016-3

R.T.: 4.478 min
 Delta R.T.: 0.000 min
 Response: 41740735
 Conc: 954.79 ng/ml



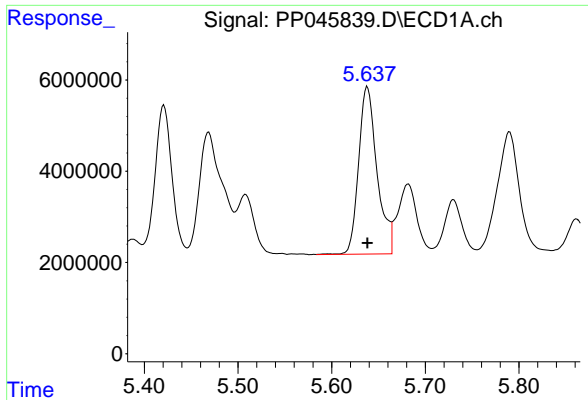
#6 AR-1016-4

R.T.: 5.319 min
 Delta R.T.: 0.000 min
 Response: 53898252
 Conc: 950.89 ng/ml



#6 AR-1016-4

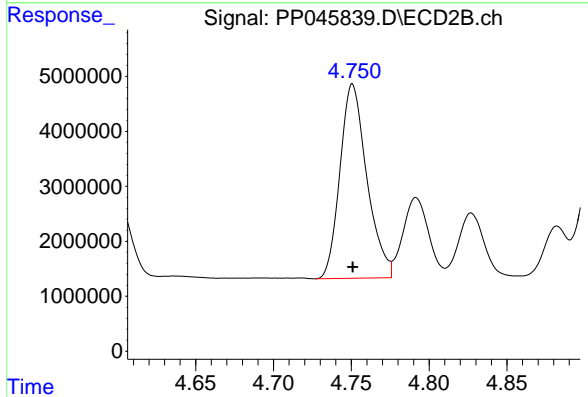
R.T.: 4.527 min
 Delta R.T.: 0.000 min
 Response: 32704094
 Conc: 943.52 ng/ml



#7 AR-1016-5

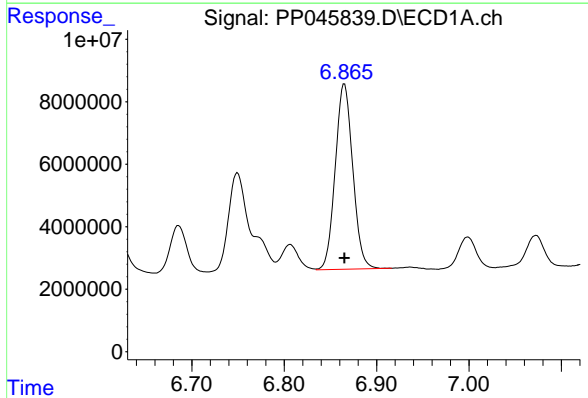
R.T.: 5.638 min
Delta R.T.: 0.000 min
Response: 50112383
Conc: 950.77 ng/ml

Instrument :
ECD_P
ClientSampleId :
AR1660ICC1000



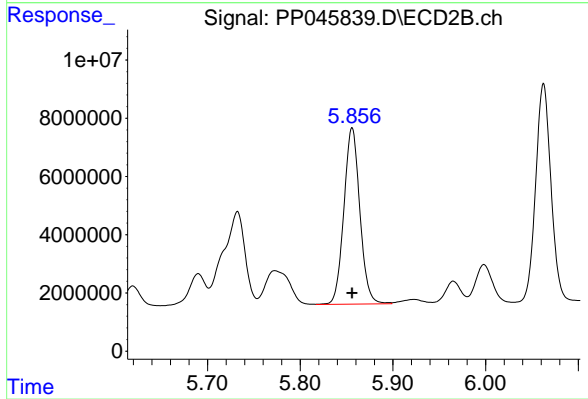
#7 AR-1016-5

R.T.: 4.751 min
Delta R.T.: 0.000 min
Response: 42489974
Conc: 949.90 ng/ml



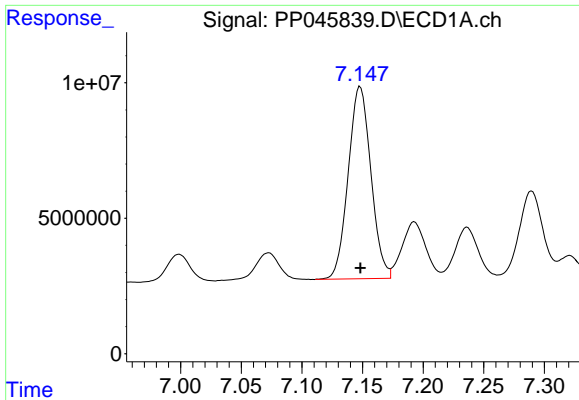
#31 AR-1260-1

R.T.: 6.865 min
Delta R.T.: 0.000 min
Response: 77997612
Conc: 953.71 ng/ml



#31 AR-1260-1

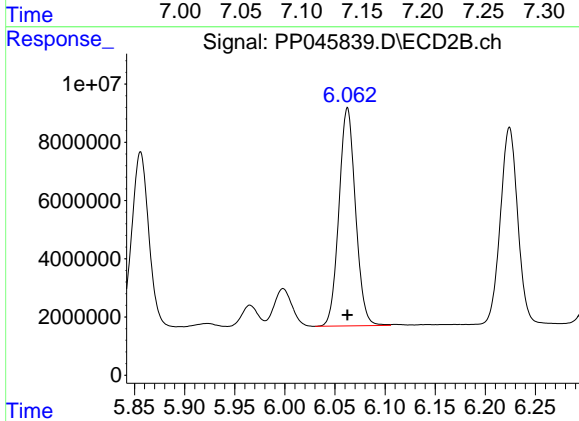
R.T.: 5.856 min
Delta R.T.: 0.000 min
Response: 72499160
Conc: 957.52 ng/ml



#32 AR-1260-2

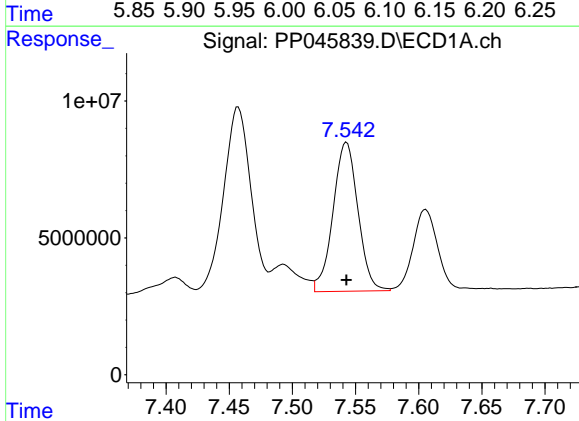
R.T.: 7.148 min
 Delta R.T.: 0.000 min
 Response: 92447943
 Conc: 961.32 ng/ml

Instrument :
 ECD_P
 ClientSampleId :
 AR1660ICC1000



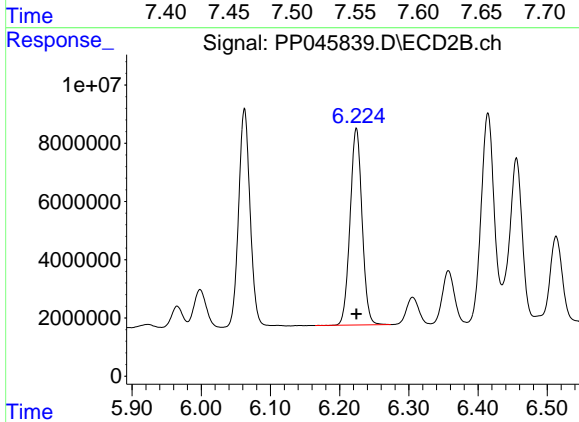
#32 AR-1260-2

R.T.: 6.063 min
 Delta R.T.: 0.000 min
 Response: 86142959
 Conc: 957.39 ng/ml



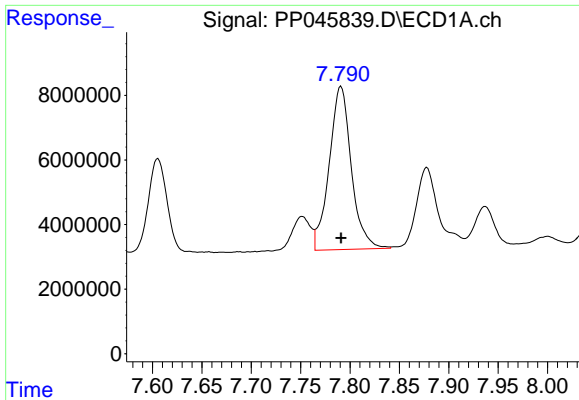
#33 AR-1260-3

R.T.: 7.543 min
 Delta R.T.: 0.000 min
 Response: 74817088
 Conc: 965.44 ng/ml



#33 AR-1260-3

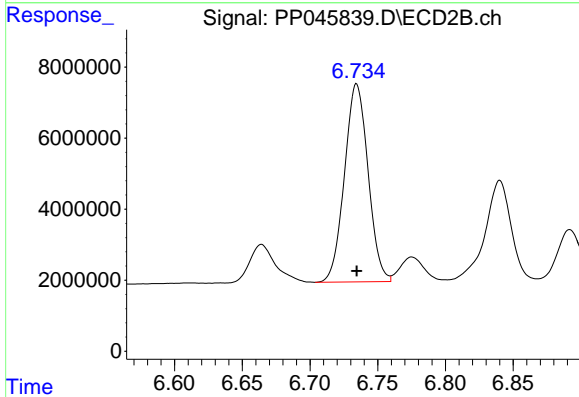
R.T.: 6.224 min
 Delta R.T.: 0.000 min
 Response: 81304600
 Conc: 959.19 ng/ml



#34 AR-1260-4

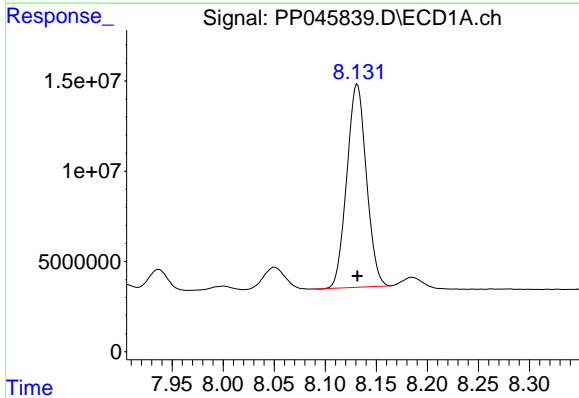
R.T.: 7.791 min
 Delta R.T.: 0.000 min
 Response: 78786403
 Conc: 957.91 ng/ml

Instrument :
 ECD_P
 ClientSampleId :
 AR1660ICC1000



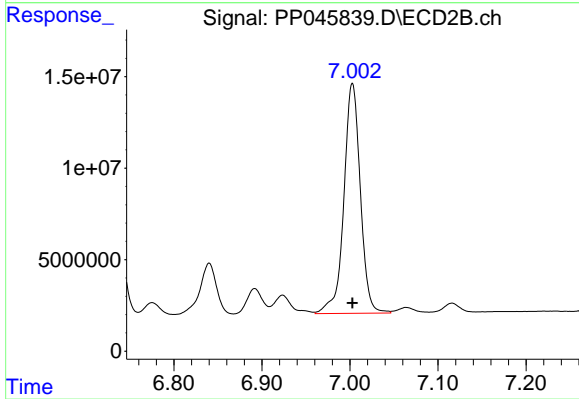
#34 AR-1260-4

R.T.: 6.734 min
 Delta R.T.: 0.000 min
 Response: 67635942
 Conc: 958.68 ng/ml



#35 AR-1260-5

R.T.: 8.131 min
 Delta R.T.: 0.000 min
 Response: 150044508
 Conc: 966.70 ng/ml



#35 AR-1260-5

R.T.: 7.003 min
 Delta R.T.: 0.000 min
 Response: 163716531
 Conc: 968.92 ng/ml