

Data Path : Z:\pestpcbsrv\HPCHEM1\ECD_P\Data\PP041322\
 Data File : PP045908.D
 Signal(s) : Signal #1: ECD1A.ch Signal #2: ECD2B.ch
 Acq On : 12 Apr 2022 20:53
 Operator : YP\AJ
 Sample : N2349-19
 Misc :
 ALS Vial : 31 Sample Multiplier: 1

Instrument :
 ECD_P
ClientSampleId :
 COM-1

Manual Integrations
APPROVED
 Reviewed By :Yogesh Patel 04/13/2022
 Supervised By :mohammad ahmed 04/14/2022

Integration File signal 1: autoint1.e
 Integration File signal 2: autoint2.e
 Quant Time: Apr 13 02:59:11 2022
 Quant Method : Z:\pestpcbsrv\HPCHEM1\ECD_P\methods\PP041222.M
 Quant Title : GC EXTRACTABLES
 QLast Update : Tue Apr 12 05:31:12 2022
 Response via : Initial Calibration
 Integrator: ChemStation

Volume Inj. : 2 µl
 Signal #1 Phase : ZB-MR2 Signal #2 Phase: ZB-MR2
 Signal #1 Info : 30Mx0.32mmx 0.50µ Signal #2 Info : 30M x 0.32mm x 0.25µm

Compound	RT#1	RT#2	Resp#1	Resp#2	ng/ml	ng/ml

System Monitoring Compounds						
1) SA Tetrachlo...	3.877	3.139	24210856	18312777	9.843	11.525
2) SA Decachlor...	10.002f	8.466	45233754	50939501	27.555m	35.739 #
Target Compounds						
26) L6 AR-1254-1	6.049	5.132	1389.0E6	1557.1E6	16806.145m	17652.039
27) L6 AR-1254-2	6.291	5.296	2827.3E6	1949.8E6	22959.090	25834.374
28) L6 AR-1254-3	6.692	5.727	3627.1E6	3582.8E6	30173.811	30463.253
29) L6 AR-1254-4	7.008	5.981f	3744.2E6	3048.8E6	42453.652	40400.725
30) L6 AR-1254-5	7.470	6.432f	5636.0E6	4987.0E6	60163.842	48676.063

(f)=RT Delta > 1/2 Window (#)=Amounts differ by > 25% (m)=manual int.

Data Path : Z:\pestpcbsrv\HPCHEM1\ECD_P\Data\PP041322\
 Data File : PP045908.D
 Signal(s) : Signal #1: ECD1A.ch Signal #2: ECD2B.ch
 Acq On : 12 Apr 2022 20:53
 Operator : YP\AJ
 Sample : N2349-19
 Misc :
 ALS Vial : 31 Sample Multiplier: 1

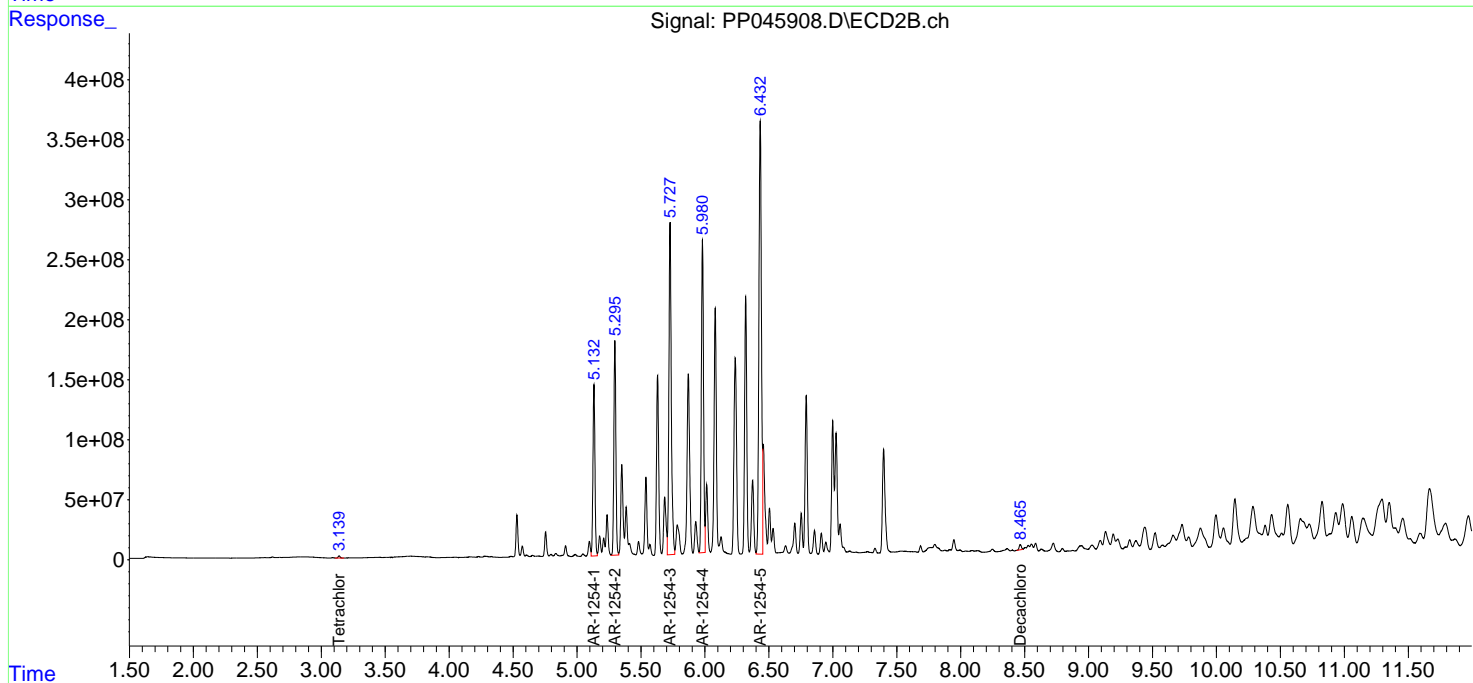
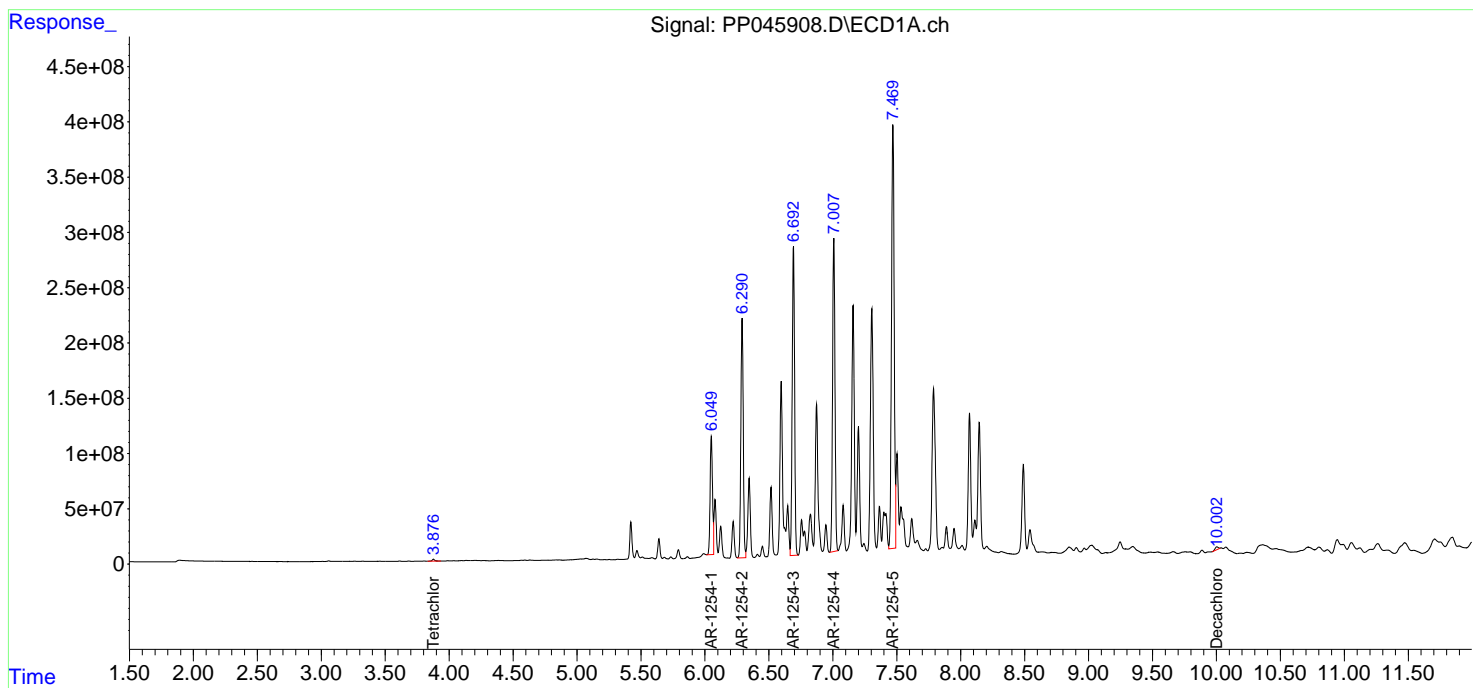
Instrument :
 ECD_P
ClientSampleId :
 COM-1

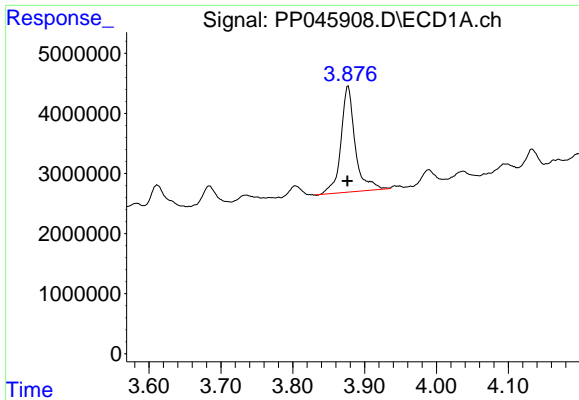
Manual Integrations
APPROVED

Reviewed By :Yogesh Patel 04/13/2022
 Supervised By :mohammad ahmed 04/14/2022

Integration File signal 1: autoint1.e
 Integration File signal 2: autoint2.e
 Quant Time: Apr 13 02:59:11 2022
 Quant Method : Z:\pestpcbsrv\HPCHEM1\ECD_P\methods\PP041222.M
 Quant Title : GC EXTRACTABLES
 QLast Update : Tue Apr 12 05:31:12 2022
 Response via : Initial Calibration
 Integrator: ChemStation

Volume Inj. : 2 µl
 Signal #1 Phase : ZB-MR1 Signal #2 Phase: ZB-MR2
 Signal #1 Info : 30Mx0.32mmx 0.50µ Signal #2 Info : 30M x 0.32mm x 0.25µm



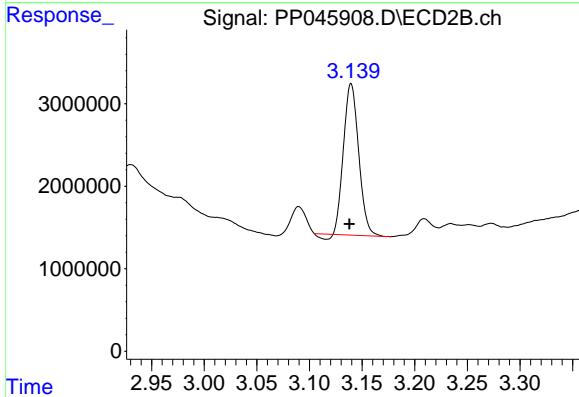


#1 Tetrachloro-m-xylene
 R.T.: 3.877 min
 Delta R.T.: 0.001 min
 Response: 24210856
 Conc: 9.84 ng/ml

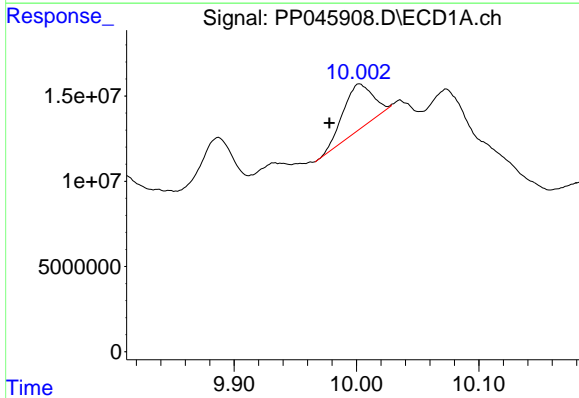
Instrument :
 ECD_P
 ClientSampleId :
 COM-1

Manual Integrations
 APPROVED

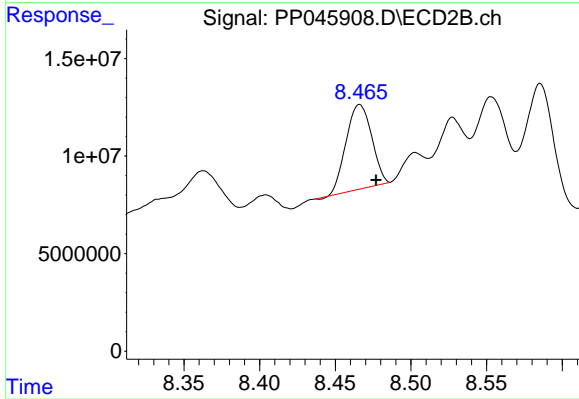
Reviewed By :Yogesh Patel 04/13/2022
 Supervised By :mohammad ahmed 04/14/2022



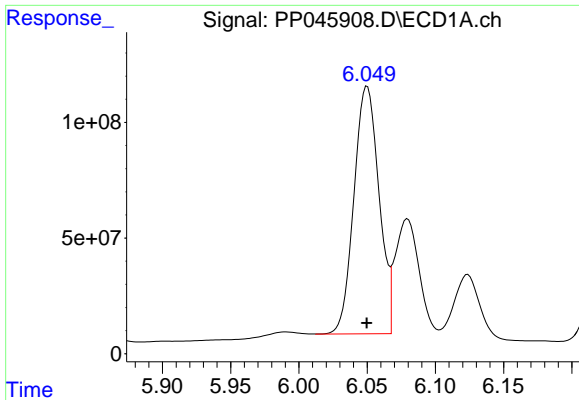
#1 Tetrachloro-m-xylene
 R.T.: 3.139 min
 Delta R.T.: 0.002 min
 Response: 18312777
 Conc: 11.52 ng/ml



#2 Decachlorobiphenyl
 R.T.: 10.002 min
 Delta R.T.: 0.024 min
 Response: 45233754
 Conc: 27.56 ng/ml m



#2 Decachlorobiphenyl
 R.T.: 8.466 min
 Delta R.T.: -0.011 min
 Response: 50939501
 Conc: 35.74 ng/ml



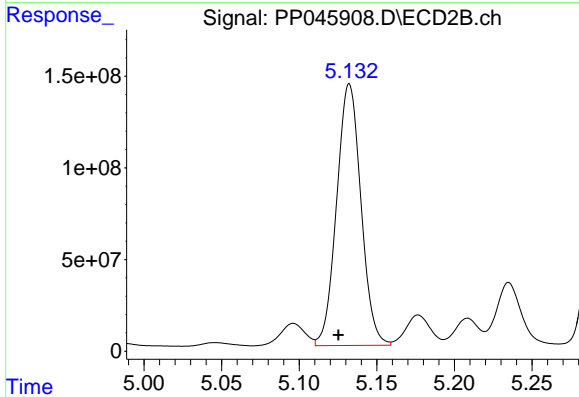
#26 AR-1254-1

R.T.: 6.049 min
 Delta R.T.: 0.000 min
 Response: 1389010520
 Conc: 16806.15 ng/ml

Instrument :
 ECD_P
 ClientSampleId :
 COM-1

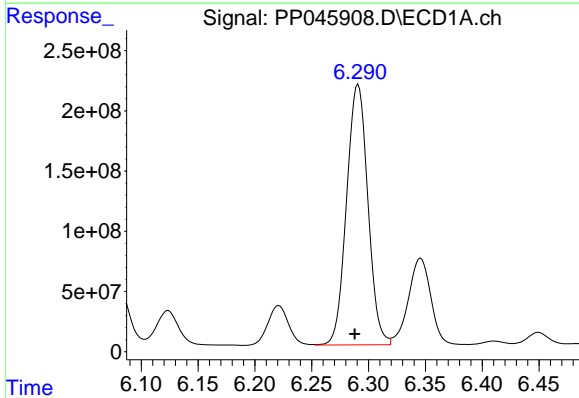
Manual Integrations
 APPROVED

Reviewed By :Yogesh Patel 04/13/2022
 Supervised By :mohammad ahmed 04/14/2022



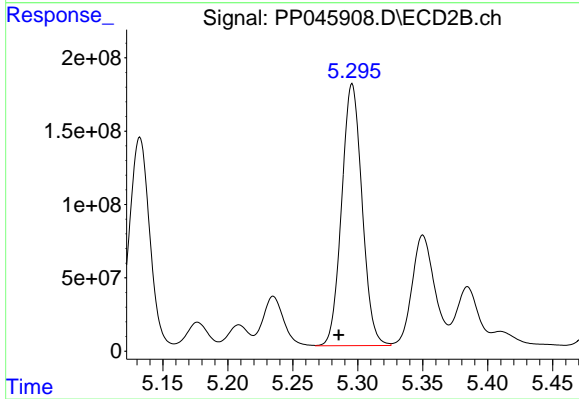
#26 AR-1254-1

R.T.: 5.132 min
 Delta R.T.: 0.007 min
 Response: 1557062409
 Conc: 17652.04 ng/ml



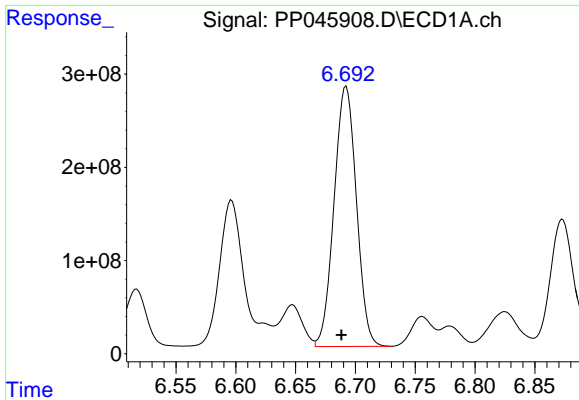
#27 AR-1254-2

R.T.: 6.291 min
 Delta R.T.: 0.003 min
 Response: 2827314936
 Conc: 22959.09 ng/ml



#27 AR-1254-2

R.T.: 5.296 min
 Delta R.T.: 0.010 min
 Response: 1949775820
 Conc: 25834.37 ng/ml



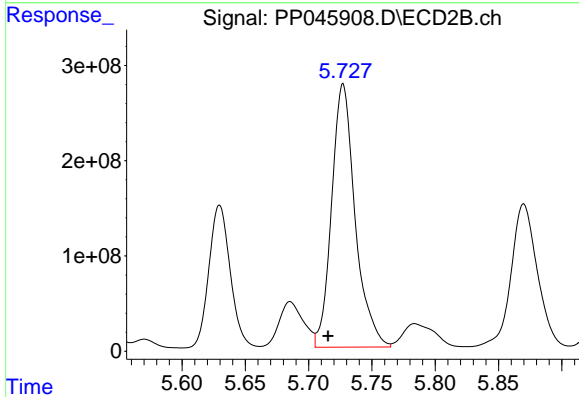
#28 AR-1254-3

R.T.: 6.692 min
 Delta R.T.: 0.004 min
 Response: 3627081291
 Conc: 30173.81 ng/ml

Instrument :
 ECD_P
 ClientSampleId :
 COM-1

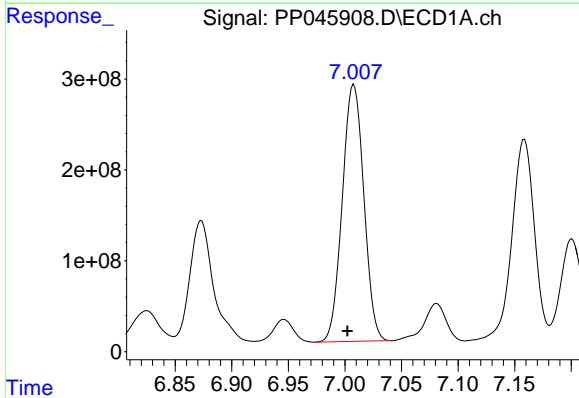
Manual Integrations
 APPROVED

Reviewed By :Yogesh Patel 04/13/2022
 Supervised By :mohammad ahmed 04/14/2022



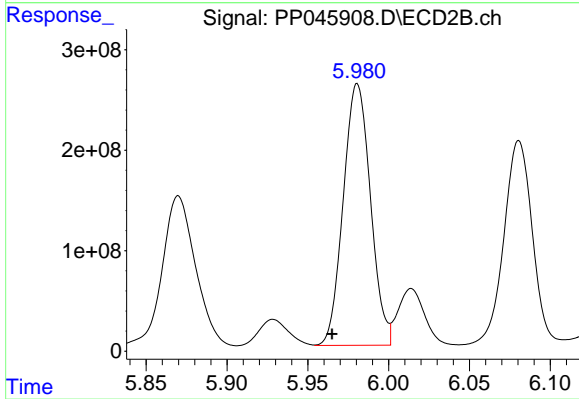
#28 AR-1254-3

R.T.: 5.727 min
 Delta R.T.: 0.012 min
 Response: 3582792363
 Conc: 30463.25 ng/ml



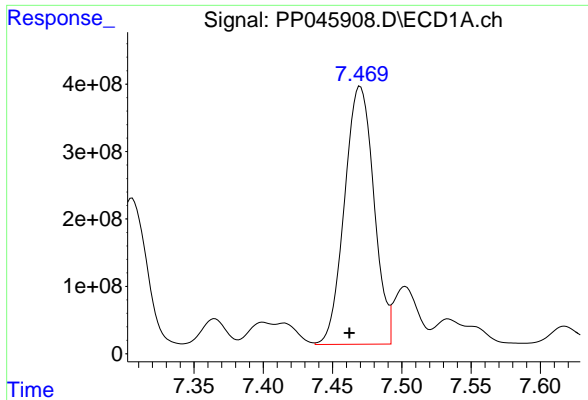
#29 AR-1254-4

R.T.: 7.008 min
 Delta R.T.: 0.006 min
 Response: 3744246151
 Conc: 42453.65 ng/ml



#29 AR-1254-4

R.T.: 5.981 min
 Delta R.T.: 0.016 min
 Response: 3048841202
 Conc: 40400.72 ng/ml



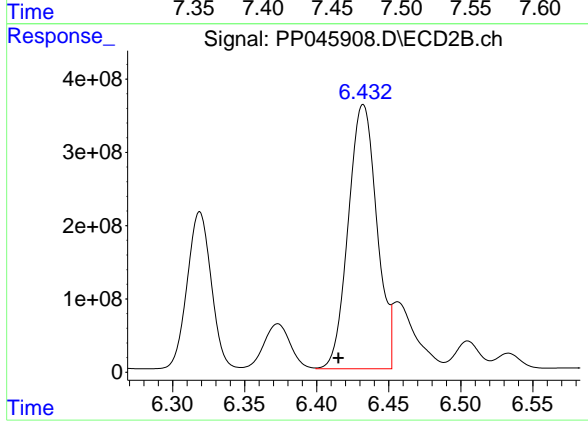
#30 AR-1254-5

R.T.: 7.470 min
 Delta R.T.: 0.008 min
 Response: 5635992694
 Conc: 60163.84 ng/ml

Instrument :
 ECD_P
 ClientSampleId :
 COM-1

Manual Integrations
 APPROVED

Reviewed By :Yogesh Patel 04/13/2022
 Supervised By :mohammad ahmed 04/14/2022



#30 AR-1254-5

R.T.: 6.432 min
 Delta R.T.: 0.017 min
 Response: 4986979617
 Conc: 48676.06 ng/ml