

Data Path : Z:\pestpcbsrv\HPCHEM1\ECD_P\Data\PP041322\
 Data File : PP046003.D
 Signal(s) : Signal #1: ECD1A.ch Signal #2: ECD2B.ch
 Acq On : 14 Apr 2022 02:40
 Operator : YP\AJ
 Sample : AR1660CCC500
 Misc :
 ALS Vial : 3 Sample Multiplier: 1

Instrument :
 ECD_P
 ClientSampleId :
 AR1660CCC500

Integration File signal 1: autoint1.e
 Integration File signal 2: autoint2.e
 Quant Time: Apr 14 04:19:39 2022
 Quant Method : Z:\pestpcbsrv\HPCHEM1\ECD_P\methods\PP041222.M
 Quant Title : GC EXTRACTABLES
 QLast Update : Tue Apr 12 05:31:12 2022
 Response via : Initial Calibration
 Integrator: ChemStation

Volume Inj. : 2 µl
 Signal #1 Phase : ZB-MR2 Signal #2 Phase: ZB-MR2
 Signal #1 Info : 30Mx0.32mmx 0.50µ Signal #2 Info : 30M x 0.32mm x 0.25µm

Compound	RT#1	RT#2	Resp#1	Resp#2	ng/ml	ng/ml

System Monitoring Compounds						
1) SA Tetrachlo...	3.876	3.138	144.4E6	93650840	58.715	58.938
2) SA Decachlor...	9.974	8.473	79816344	75395962	48.622	52.898
Target Compounds						
3) L1 AR-1016-1	5.124	4.274	43176847	34170877	563.152	581.861
4) L1 AR-1016-2	5.147	4.292	63017340	48013923	544.957	574.707
5) L1 AR-1016-3	5.212	4.477	38271037	26030055	555.462	589.265
6) L1 AR-1016-4	5.317	4.526	31285638	20743781	531.667	581.307
7) L1 AR-1016-5	5.637	4.749	28597990	26766943	518.594	563.447
31) L7 AR-1260-1	6.863	5.852	42588172	44109083	482.452	557.303
32) L7 AR-1260-2	7.146	6.060	50708016	52628612	494.975	562.215
33) L7 AR-1260-3	7.541	6.221	39687487	48806897	481.732	550.971
34) L7 AR-1260-4	7.788	6.731	41496712	40209952	489.696	559.978
35) L7 AR-1260-5	8.129	7.000	81245680	94408781	494.700	555.788

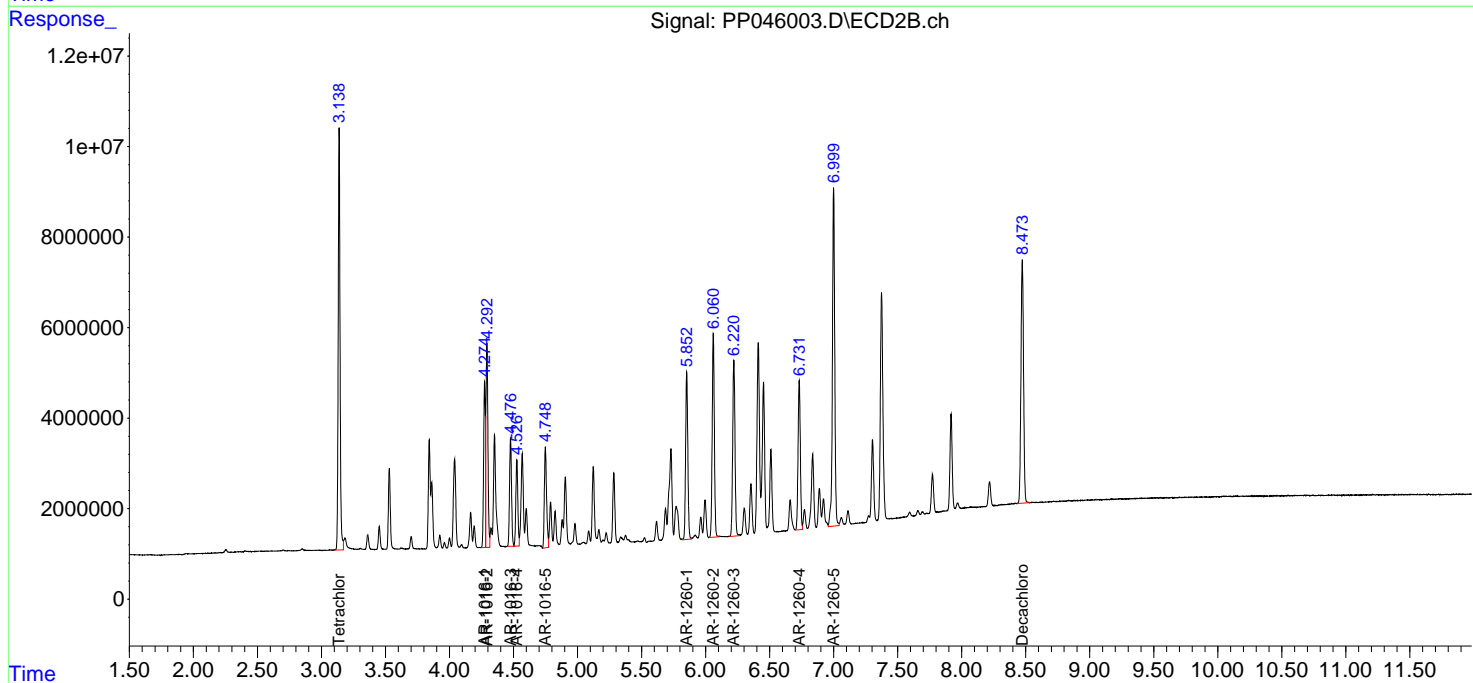
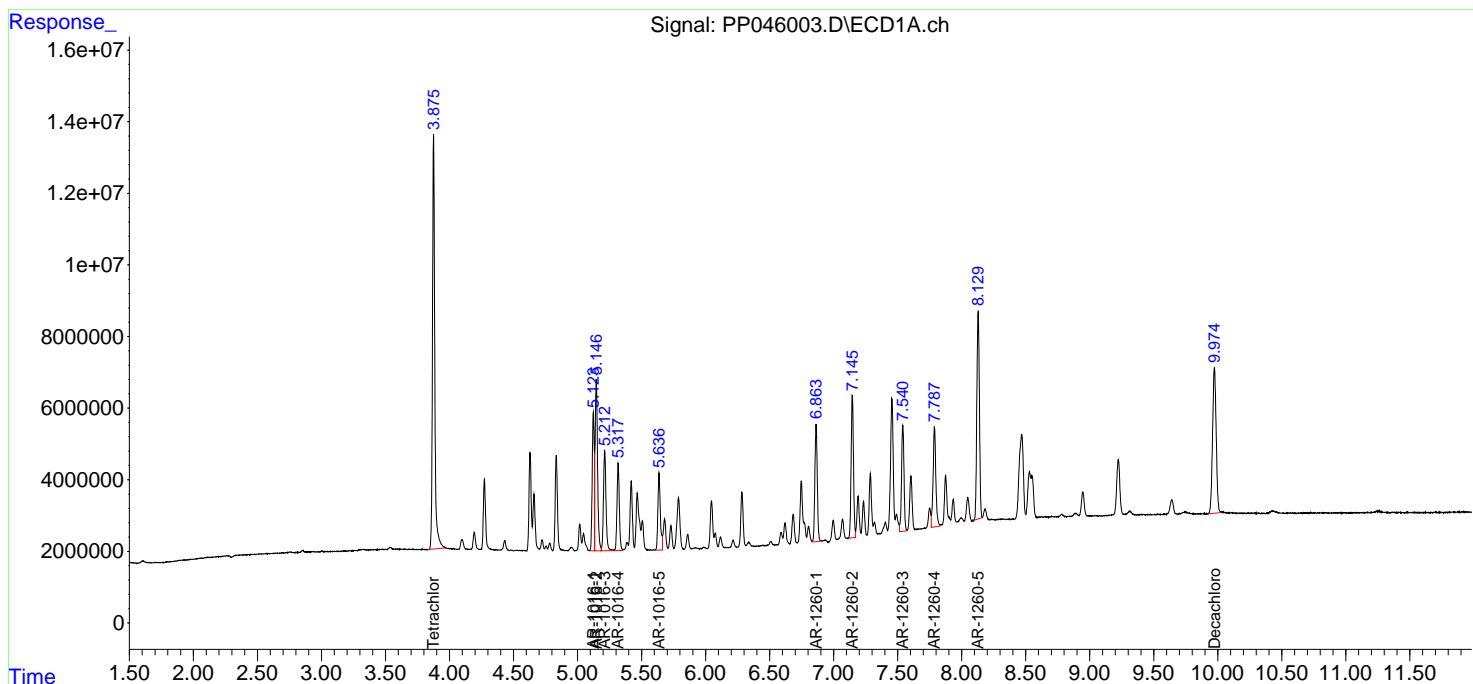
(f)=RT Delta > 1/2 Window (#)=Amounts differ by > 25% (m)=manual int.

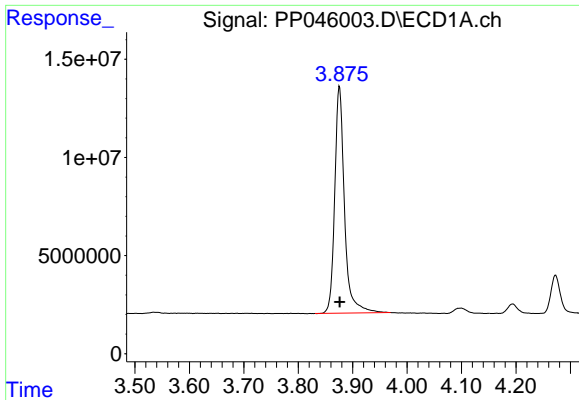
Data Path : Z:\pestpcbsrv\HPCHEM1\ECD_P\Data\PP041322\
 Data File : PP046003.D
 Signal(s) : Signal #1: ECD1A.ch Signal #2: ECD2B.ch
 Acq On : 14 Apr 2022 02:40
 Operator : YP\AJ
 Sample : AR1660CCC500
 Misc :
 ALS Vial : 3 Sample Multiplier: 1

Instrument :
 ECD_P
 ClientSampleId :
 AR1660CCC500

Integration File signal 1: autoint1.e
 Integration File signal 2: autoint2.e
 Quant Time: Apr 14 04:19:39 2022
 Quant Method : Z:\pestpcbsrv\HPCHEM1\ECD_P\methods\PP041222.M
 Quant Title : GC EXTRACTABLES
 QLast Update : Tue Apr 12 05:31:12 2022
 Response via : Initial Calibration
 Integrator: ChemStation

Volume Inj. : 2 µl
 Signal #1 Phase : ZB-MR1 Signal #2 Phase: ZB-MR2
 Signal #1 Info : 30Mx0.32mmx 0.50µ Signal #2 Info : 30M x 0.32mm x 0.25µm

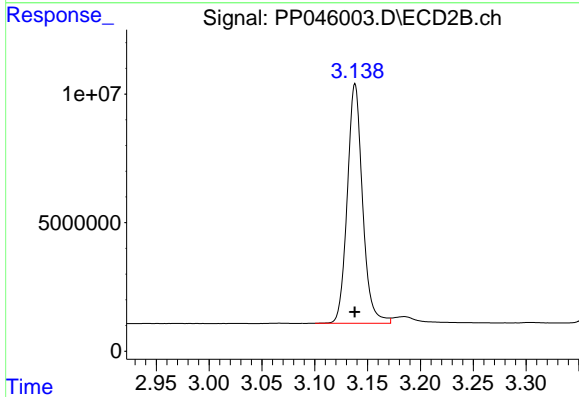




#1 Tetrachloro-m-xylene

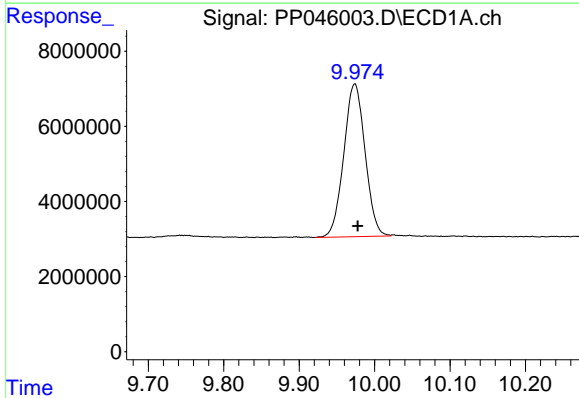
R.T.: 3.876 min
Delta R.T.: 0.000 min
Response: 144420111
Conc: 58.71 ng/ml

Instrument :
ECD_P
ClientSampleId :
AR1660CCC500



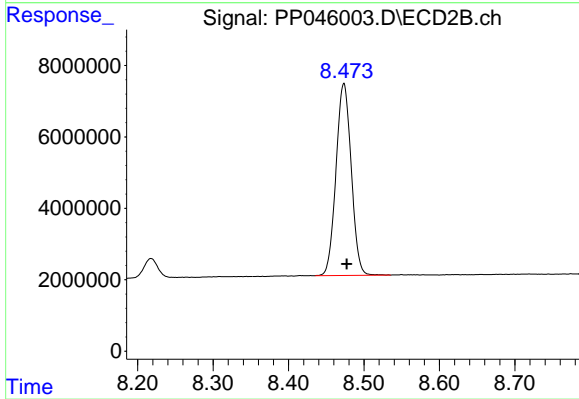
#1 Tetrachloro-m-xylene

R.T.: 3.138 min
Delta R.T.: 0.000 min
Response: 93650840
Conc: 58.94 ng/ml



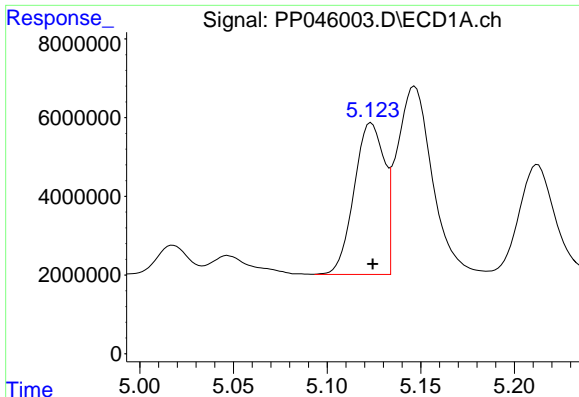
#2 Decachlorobiphenyl

R.T.: 9.974 min
Delta R.T.: -0.004 min
Response: 79816344
Conc: 48.62 ng/ml



#2 Decachlorobiphenyl

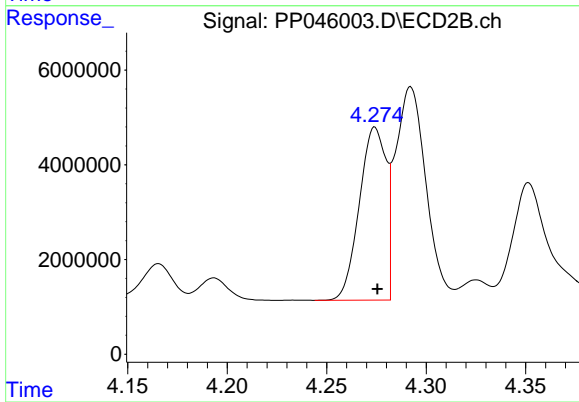
R.T.: 8.473 min
Delta R.T.: -0.004 min
Response: 75395962
Conc: 52.90 ng/ml



#3 AR-1016-1

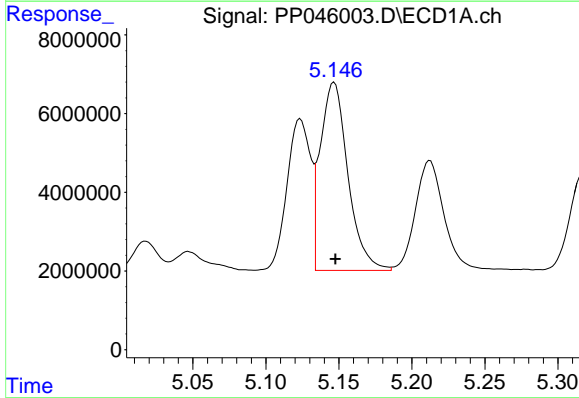
R.T.: 5.124 min
 Delta R.T.: 0.000 min
 Response: 43176847
 Conc: 563.15 ng/ml

Instrument :
 ECD_P
 ClientSampleId :
 AR1660CCC500



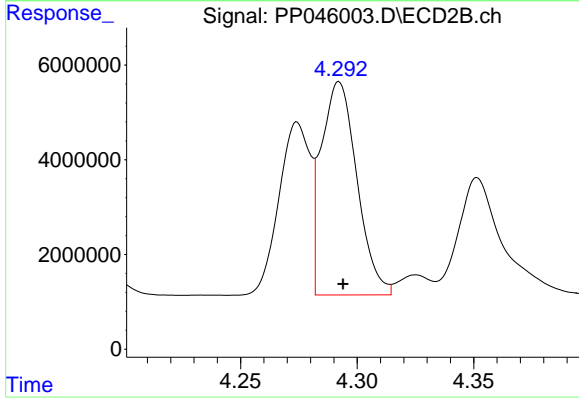
#3 AR-1016-1

R.T.: 4.274 min
 Delta R.T.: -0.001 min
 Response: 34170877
 Conc: 581.86 ng/ml



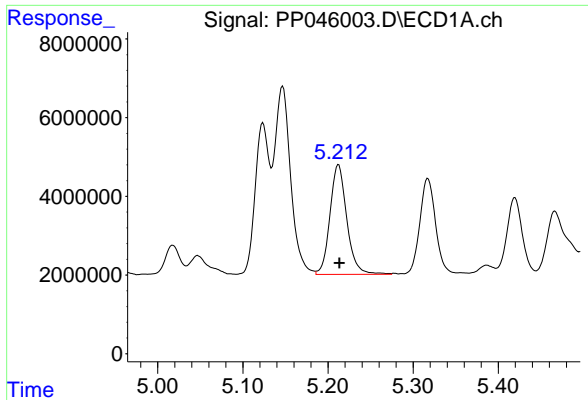
#4 AR-1016-2

R.T.: 5.147 min
 Delta R.T.: 0.000 min
 Response: 63017340
 Conc: 544.96 ng/ml



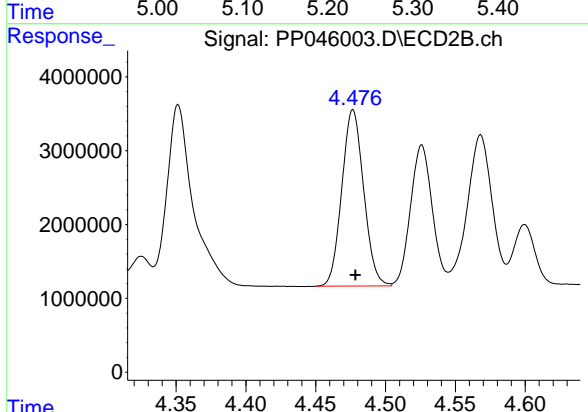
#4 AR-1016-2

R.T.: 4.292 min
 Delta R.T.: -0.002 min
 Response: 48013923
 Conc: 574.71 ng/ml

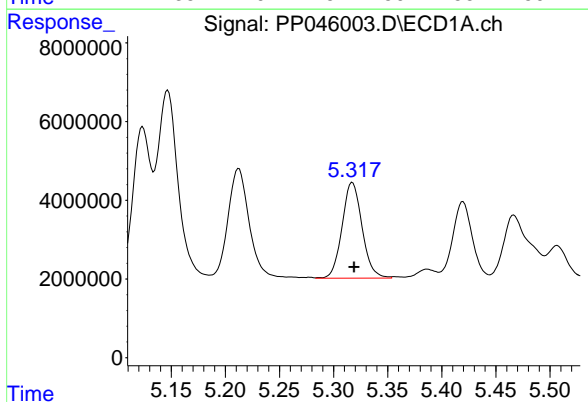


#5 AR-1016-3
 R.T.: 5.212 min
 Delta R.T.: 0.000 min
 Response: 38271037
 Conc: 555.46 ng/ml

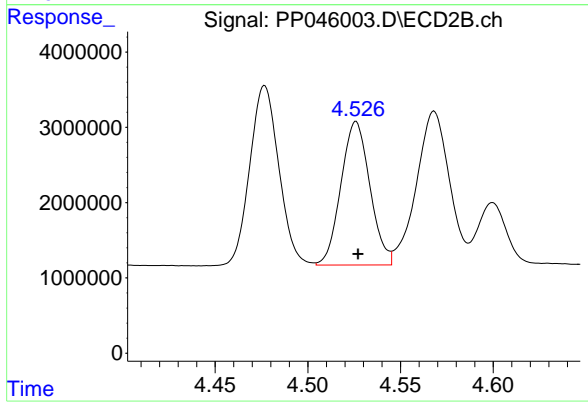
Instrument :
 ECD_P
 ClientSampleId :
 AR1660CCC500



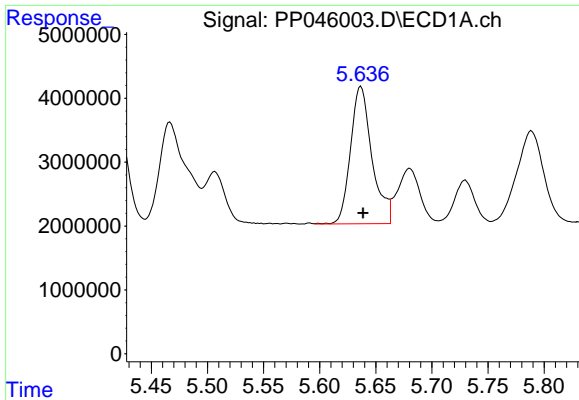
#5 AR-1016-3
 R.T.: 4.477 min
 Delta R.T.: -0.002 min
 Response: 26030055
 Conc: 589.27 ng/ml



#6 AR-1016-4
 R.T.: 5.317 min
 Delta R.T.: -0.002 min
 Response: 31285638
 Conc: 531.67 ng/ml



#6 AR-1016-4
 R.T.: 4.526 min
 Delta R.T.: -0.001 min
 Response: 20743781
 Conc: 581.31 ng/ml

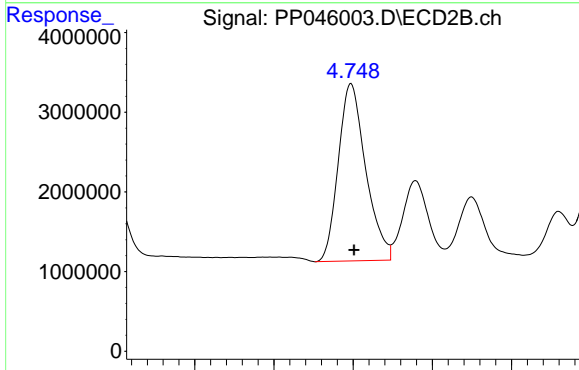


#7 AR-1016-5

R.T.: 5.637 min
 Delta R.T.: -0.002 min
 Response: 28597990
 Conc: 518.59 ng/ml

Instrument :
 ECD_P
 ClientSampleId :
 AR1660CCC500

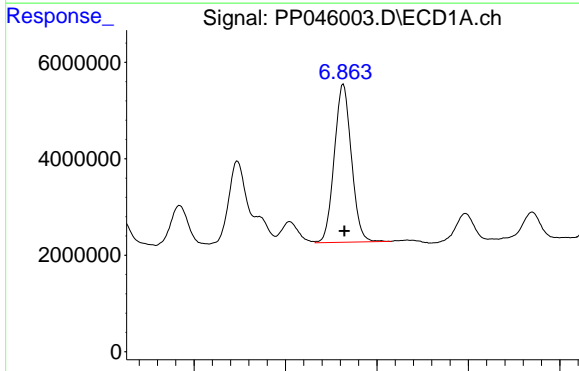
Time 5.45 5.50 5.55 5.60 5.65 5.70 5.75 5.80



#7 AR-1016-5

R.T.: 4.749 min
 Delta R.T.: -0.002 min
 Response: 26766943
 Conc: 563.45 ng/ml

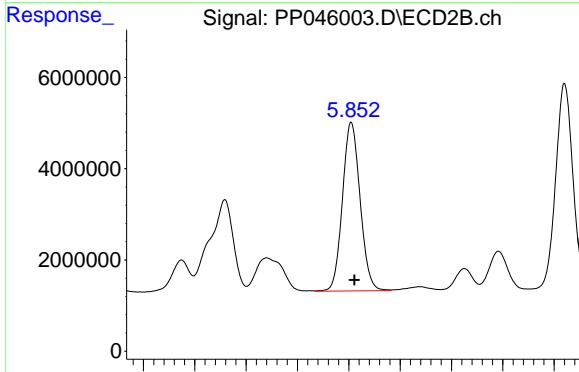
Time 4.65 4.70 4.75 4.80 4.85



#31 AR-1260-1

R.T.: 6.863 min
 Delta R.T.: -0.001 min
 Response: 42588172
 Conc: 482.45 ng/ml

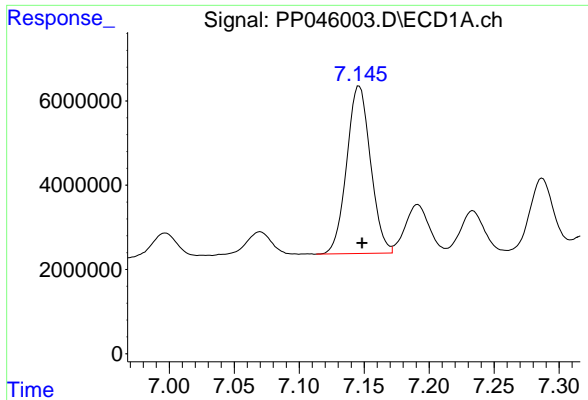
Time 6.70 6.80 6.90 7.00 7.10



#31 AR-1260-1

R.T.: 5.852 min
 Delta R.T.: -0.003 min
 Response: 44109083
 Conc: 557.30 ng/ml

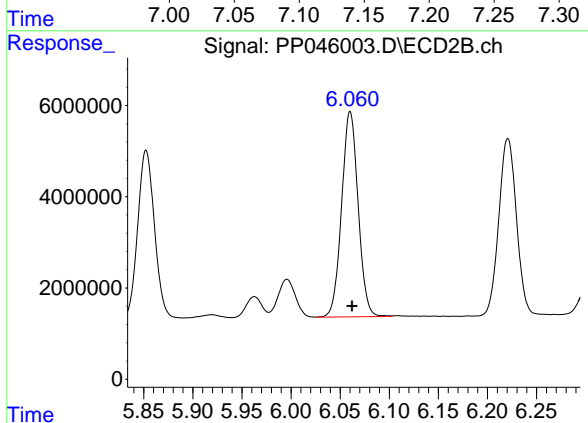
Time 5.65 5.70 5.75 5.80 5.85 5.90 5.95 6.00 6.05



#32 AR-1260-2

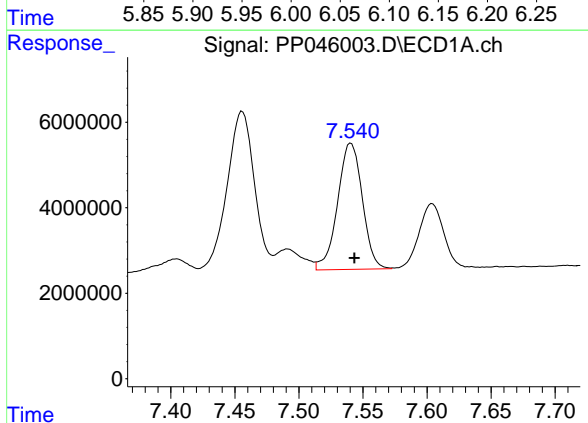
R.T.: 7.146 min
 Delta R.T.: -0.002 min
 Response: 50708016
 Conc: 494.98 ng/ml

Instrument :
 ECD_P
 ClientSampleId :
 AR1660CCC500



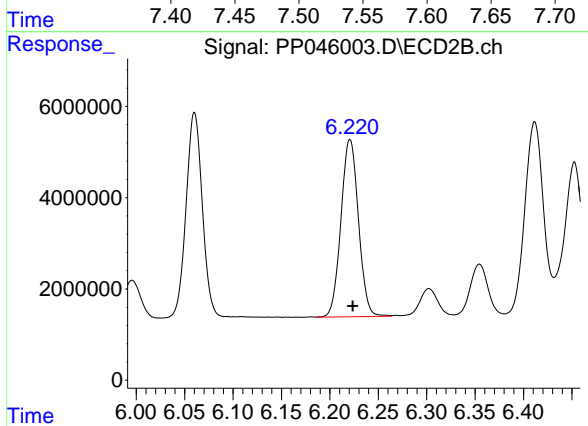
#32 AR-1260-2

R.T.: 6.060 min
 Delta R.T.: -0.002 min
 Response: 52628612
 Conc: 562.22 ng/ml



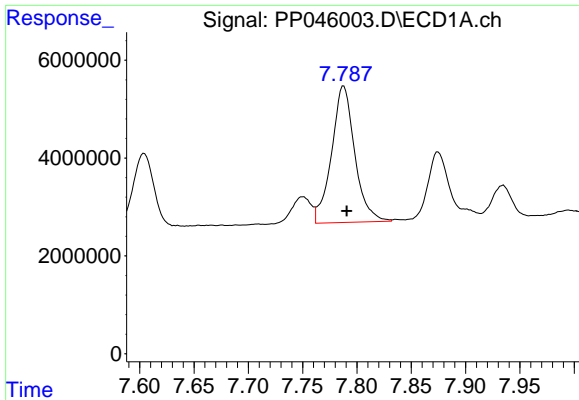
#33 AR-1260-3

R.T.: 7.541 min
 Delta R.T.: -0.003 min
 Response: 39687487
 Conc: 481.73 ng/ml



#33 AR-1260-3

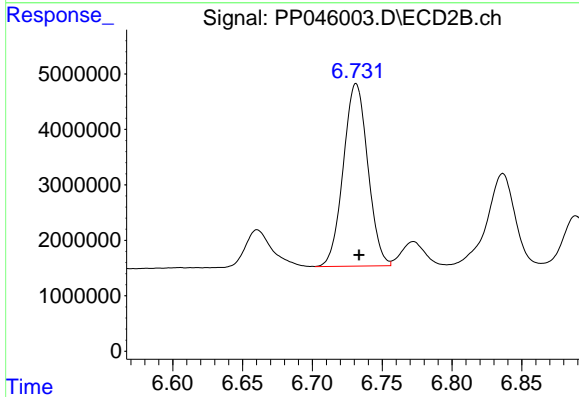
R.T.: 6.221 min
 Delta R.T.: -0.003 min
 Response: 48806897
 Conc: 550.97 ng/ml



#34 AR-1260-4

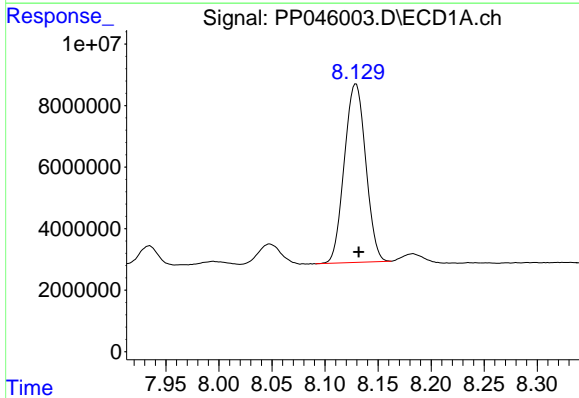
R.T.: 7.788 min
 Delta R.T.: -0.003 min
 Response: 41496712
 Conc: 489.70 ng/ml

Instrument :
 ECD_P
 ClientSampleId :
 AR1660CCC500



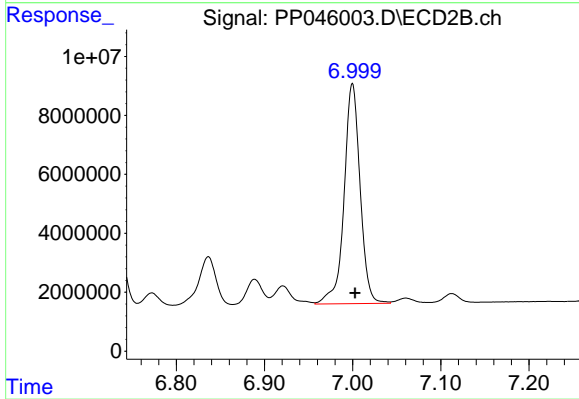
#34 AR-1260-4

R.T.: 6.731 min
 Delta R.T.: -0.002 min
 Response: 40209952
 Conc: 559.98 ng/ml



#35 AR-1260-5

R.T.: 8.129 min
 Delta R.T.: -0.003 min
 Response: 81245680
 Conc: 494.70 ng/ml



#35 AR-1260-5

R.T.: 7.000 min
 Delta R.T.: -0.003 min
 Response: 94408781
 Conc: 555.79 ng/ml