

Data Path : Z:\pestpcbsrv\HPCHEM1\ECD_P\Data\PP041323\
 Data File : PP056909.D
 Signal(s) : Signal #1: ECD1A.ch Signal #2: ECD2B.ch
 Acq On : 13 Apr 2023 14:18
 Operator : YP\AJ
 Sample : PB152102BS
 Misc :
 ALS Vial : 8 Sample Multiplier: 1

Instrument :
 ECD_P
ClientSampleId :
 PB152102BS

Manual Integrations
APPROVED
 Reviewed By :Yogesh Patel 04/14/2023
 Supervised By :Ankita Jodhani 04/14/2023

Integration File signal 1: autoint1.e
 Integration File signal 2: autoint2.e
 Quant Time: Apr 13 17:39:57 2023
 Quant Method : Z:\pestpcbsrv\HPCHEM1\ECD_P\methods\PP040623.M
 Quant Title : GC EXTRACTABLES
 QLast Update : Fri Apr 07 04:14:17 2023
 Response via : Initial Calibration
 Integrator: ChemStation

Volume Inj. : 2 µl
 Signal #1 Phase : ZB-MR1 Signal #2 Phase: ZB-MR2
 Signal #1 Info : 30Mx0.32mmx 0.50µ Signal #2 Info : 30M x 0.32mm x 0.25µm

Compound	RT#1	RT#2	Resp#1	Resp#2	ng/ml	ng/ml

System Monitoring Compounds						
1) SA Tetrachlo...	4.434	3.659	44554395	31276557	20.737	17.983m
2) SA Decachlor...	10.276	8.743	28093879	28775690	21.464	18.302
Target Compounds						
3) L1 AR-1016-1	5.609	4.761	28623081	20786151	466.185	390.273
4) L1 AR-1016-2	5.633	4.780	42096623	29248120	472.066	394.428
5) L1 AR-1016-3	5.695	4.959	27116314	16204045	478.292	402.652
6) L1 AR-1016-4	5.794	5.000	20982790	14828809	468.578	409.235
7) L1 AR-1016-5	6.092	5.217	22114733	18398747	471.659	391.790
31) L7 AR-1260-1	7.226	6.262	37735937	37136015	463.577	388.274
32) L7 AR-1260-2	7.484	6.451	39623727	39582720	464.427	383.266
33) L7 AR-1260-3	7.847	6.606	27405176	39726051	392.423	383.068
34) L7 AR-1260-4	8.074	7.083	32636200	28749551	427.740	336.607
35) L7 AR-1260-5	8.400	7.324	53410419	54877077	421.971	346.746m

(f)=RT Delta > 1/2 Window (#)=Amounts differ by > 25% (m)=manual int.

Data Path : Z:\pestpcbsrv\HPCHEM1\ECD_P\Data\PP041323\
 Data File : PP056909.D
 Signal(s) : Signal #1: ECD1A.ch Signal #2: ECD2B.ch
 Acq On : 13 Apr 2023 14:18
 Operator : YP\AJ
 Sample : PB152102BS
 Misc :
 ALS Vial : 8 Sample Multiplier: 1

Instrument :

ECD_P

ClientSampleId :

PB152102BS

Manual Integrations

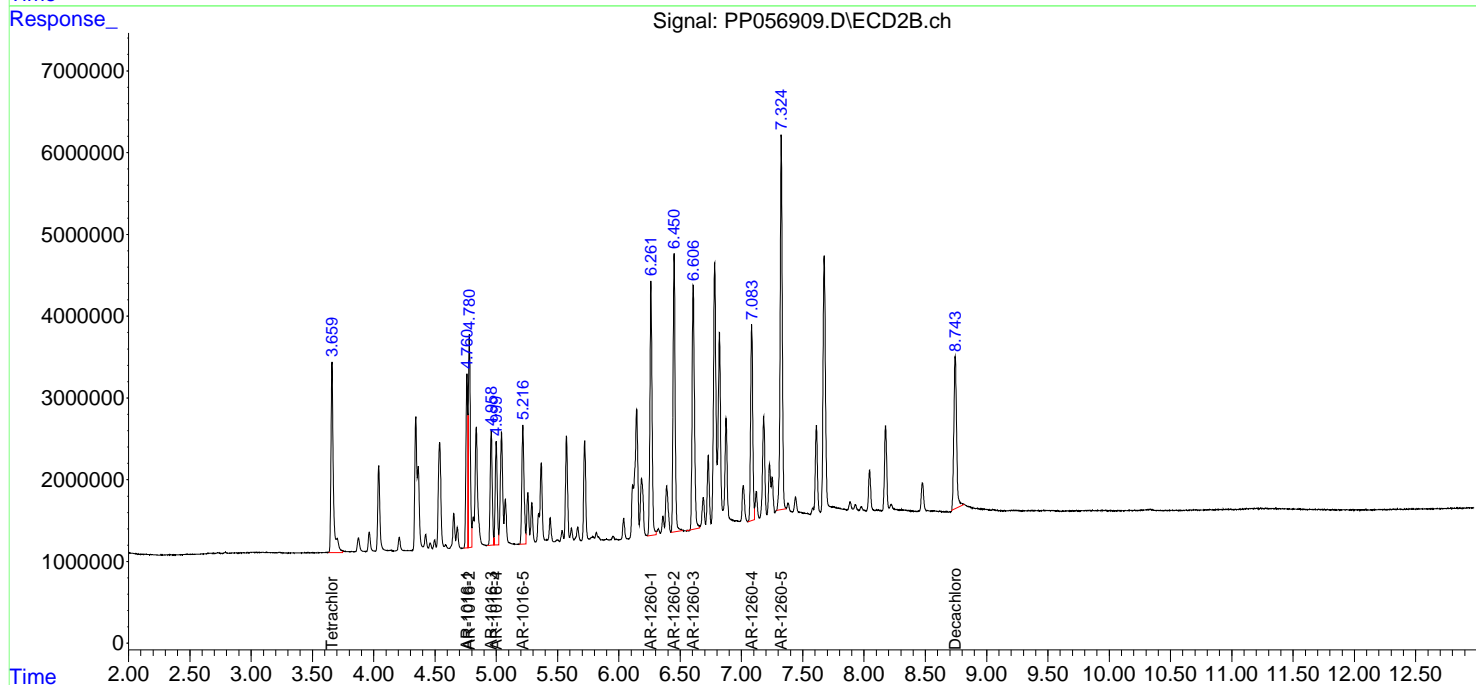
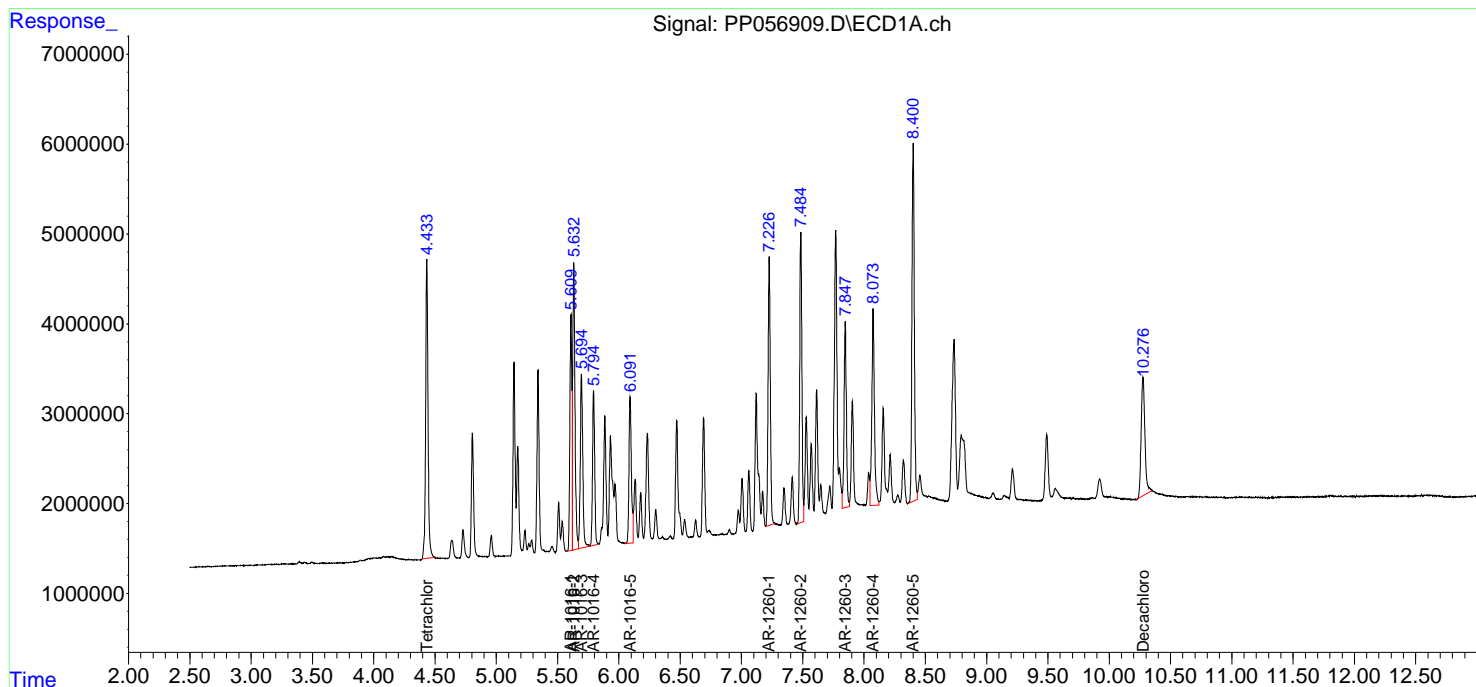
APPROVED

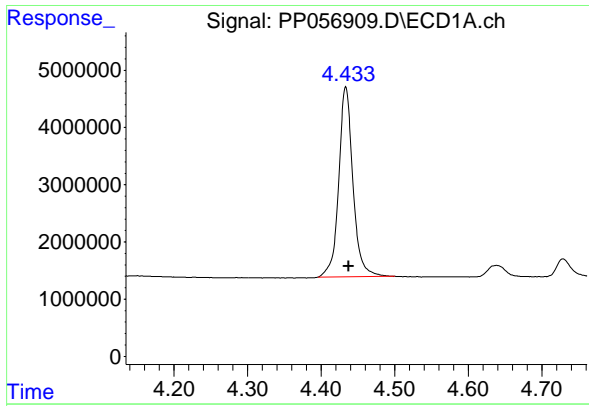
Reviewed By :Yogesh Patel 04/14/2023

Supervised By :Ankita Jodhani 04/14/2023

Integration File signal 1: autoint1.e
 Integration File signal 2: autoint2.e
 Quant Time: Apr 13 17:39:57 2023
 Quant Method : Z:\pestpcbsrv\HPCHEM1\ECD_P\methods\PP040623.M
 Quant Title : GC EXTRACTABLES
 QLast Update : Fri Apr 07 04:14:17 2023
 Response via : Initial Calibration
 Integrator: ChemStation

Volume Inj. : 2 µl
 Signal #1 Phase : ZB-MR1 Signal #2 Phase: ZB-MR2
 Signal #1 Info : 30Mx0.32mmx 0.50µm Signal #2 Info : 30M x 0.32mm x 0.25µm





#1 Tetrachloro-m-xylene

R.T.: 4.434 min
 Delta R.T.: -0.003 min
 Response: 44554395
 Conc: 20.74 ng/ml

Instrument :

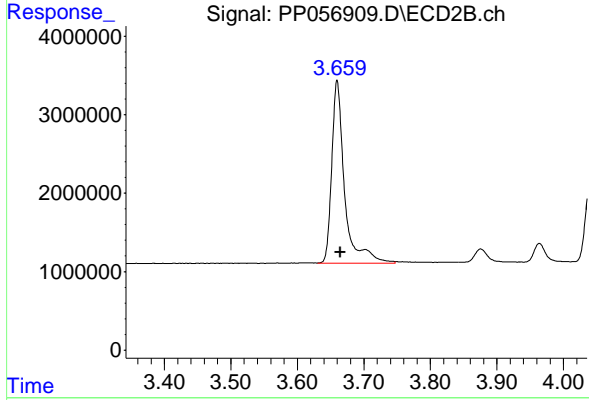
ECD_P

Client SampleId :

PB152102BS

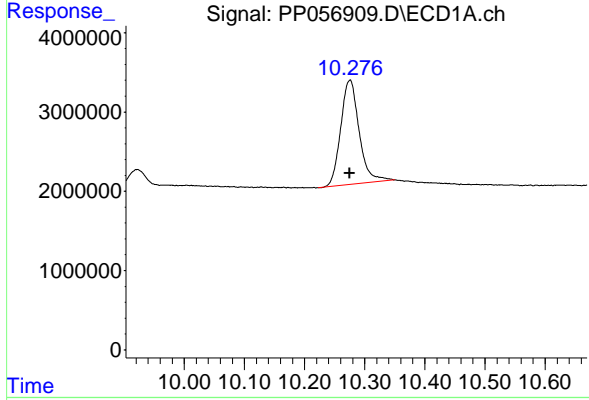
Manual Integrations
 APPROVED

Reviewed By :Yogesh Patel 04/14/2023
 Supervised By :Ankita Jodhani 04/14/2023



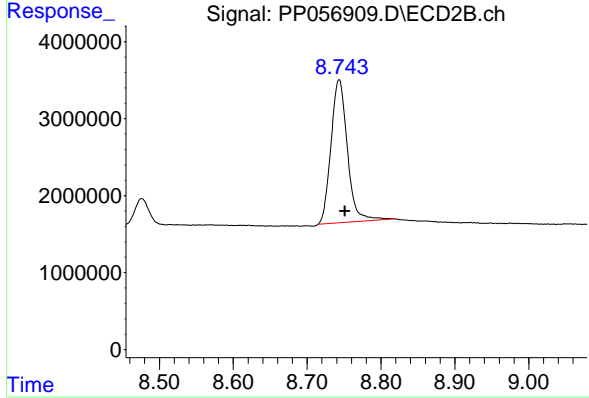
#1 Tetrachloro-m-xylene

R.T.: 3.659 min
 Delta R.T.: -0.006 min
 Response: 31276557
 Conc: 17.98 ng/ml m



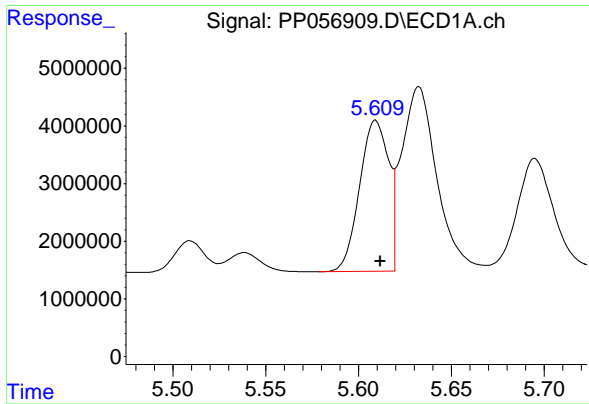
#2 Decachlorobiphenyl

R.T.: 10.276 min
 Delta R.T.: 0.000 min
 Response: 28093879
 Conc: 21.46 ng/ml



#2 Decachlorobiphenyl

R.T.: 8.743 min
 Delta R.T.: -0.008 min
 Response: 28775690
 Conc: 18.30 ng/ml



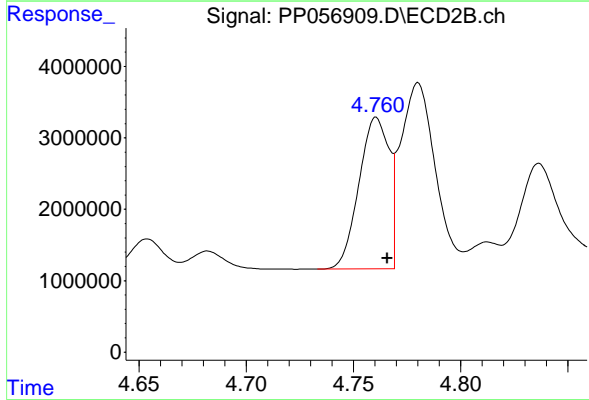
#3 AR-1016-1

R.T.: 5.609 min
 Delta R.T.: -0.003 min
 Response: 28623081
 Conc: 466.18 ng/ml

Instrument : ECD_P
 Client Sample Id : PB152102BS

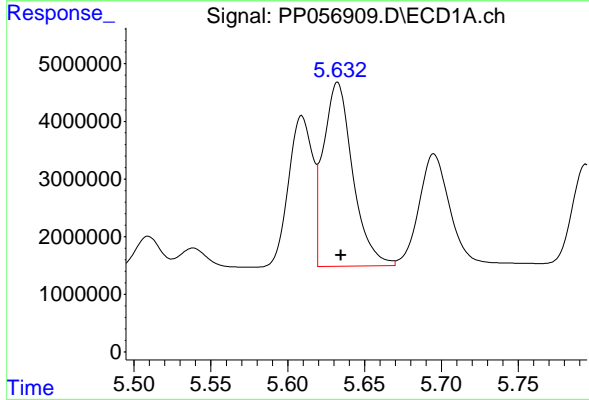
Manual Integrations
 APPROVED

Reviewed By :Yogesh Patel 04/14/2023
 Supervised By :Ankita Jodhani 04/14/2023



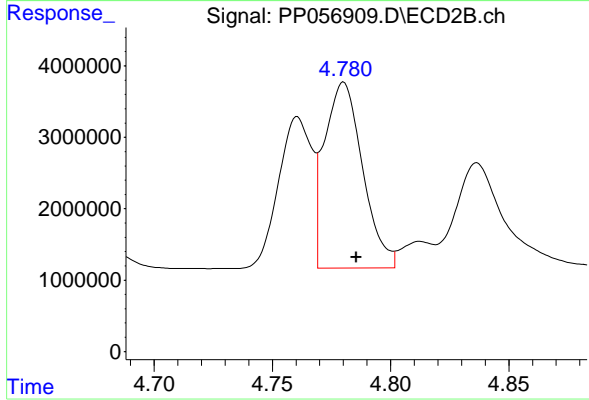
#3 AR-1016-1

R.T.: 4.761 min
 Delta R.T.: -0.005 min
 Response: 20786151
 Conc: 390.27 ng/ml



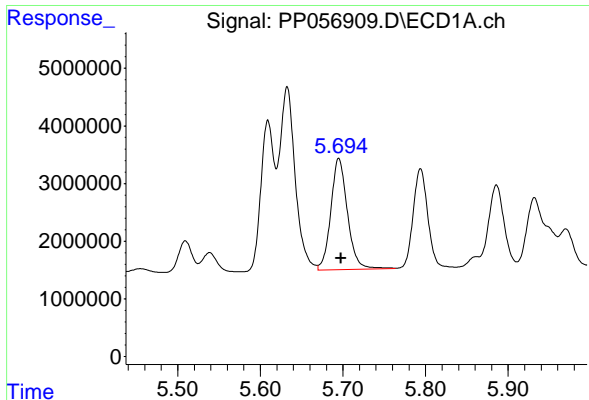
#4 AR-1016-2

R.T.: 5.633 min
 Delta R.T.: -0.002 min
 Response: 42096623
 Conc: 472.07 ng/ml



#4 AR-1016-2

R.T.: 4.780 min
 Delta R.T.: -0.005 min
 Response: 29248120
 Conc: 394.43 ng/ml



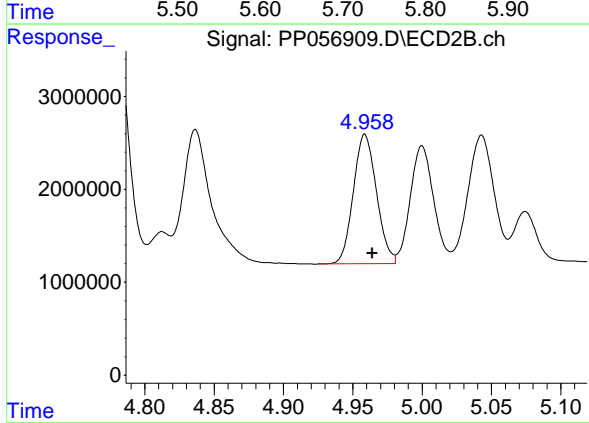
#5 AR-1016-3

R.T.: 5.695 min
 Delta R.T.: -0.003 min
 Response: 27116314
 Conc: 478.29 ng/ml

Instrument :
 ECD_P
 Client Sample Id :
 PB152102BS

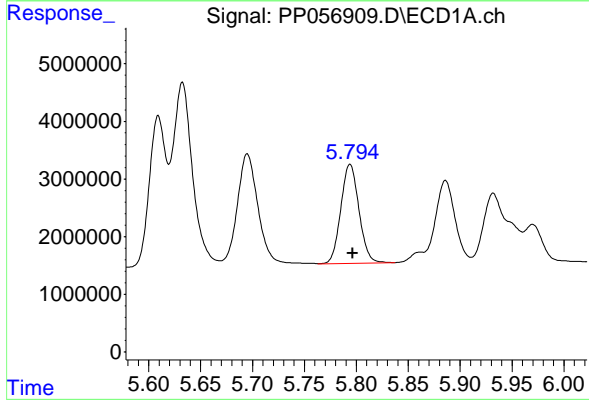
Manual Integrations
 APPROVED

Reviewed By :Yogesh Patel 04/14/2023
 Supervised By :Ankita Jodhani 04/14/2023



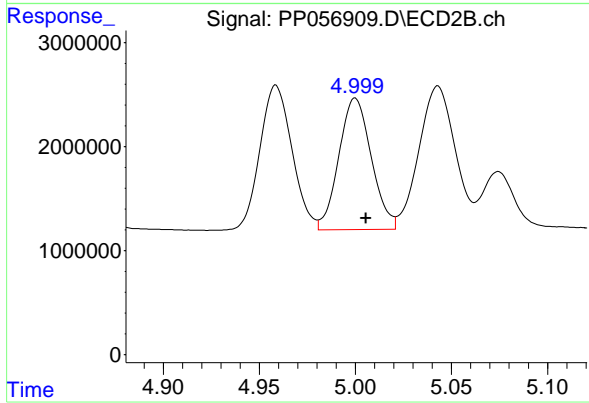
#5 AR-1016-3

R.T.: 4.959 min
 Delta R.T.: -0.006 min
 Response: 16204045
 Conc: 402.65 ng/ml



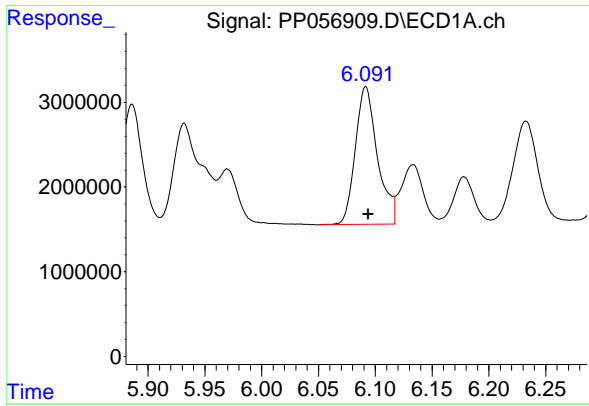
#6 AR-1016-4

R.T.: 5.794 min
 Delta R.T.: -0.003 min
 Response: 20982790
 Conc: 468.58 ng/ml



#6 AR-1016-4

R.T.: 5.000 min
 Delta R.T.: -0.006 min
 Response: 14828809
 Conc: 409.24 ng/ml



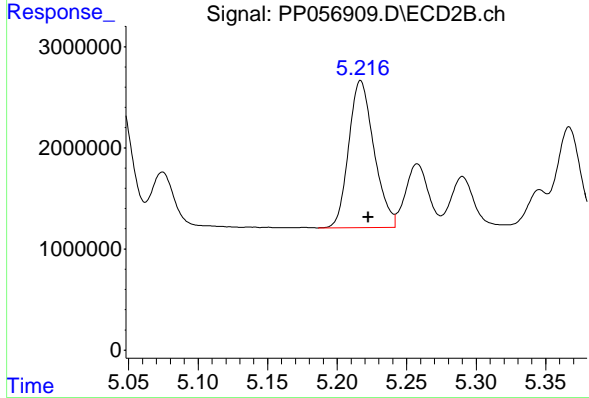
#7 AR-1016-5

R.T.: 6.092 min
 Delta R.T.: -0.002 min
 Response: 22114733
 Conc: 471.66 ng/ml

Instrument :
 ECD_P
 Client Sample Id :
 PB152102BS

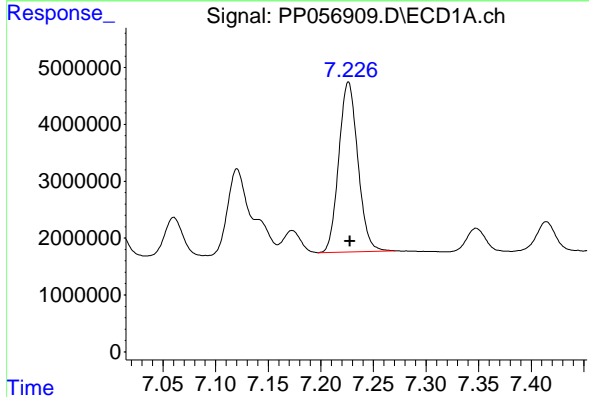
Manual Integrations
 APPROVED

Reviewed By :Yogesh Patel 04/14/2023
 Supervised By :Ankita Jodhani 04/14/2023



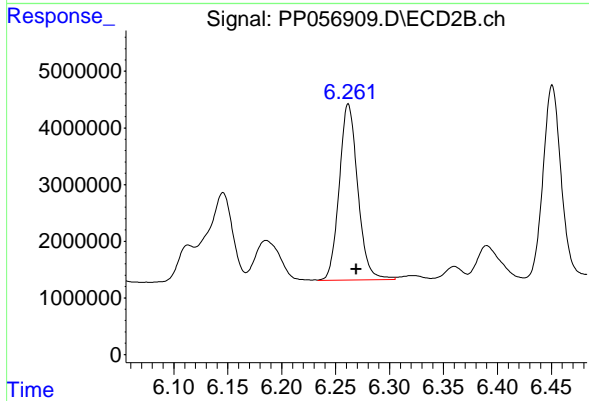
#7 AR-1016-5

R.T.: 5.217 min
 Delta R.T.: -0.006 min
 Response: 18398747
 Conc: 391.79 ng/ml



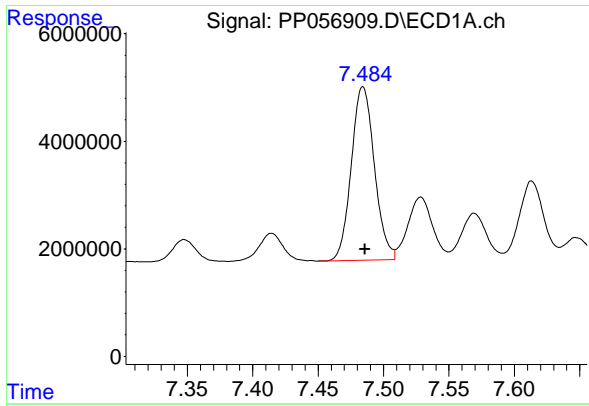
#31 AR-1260-1

R.T.: 7.226 min
 Delta R.T.: -0.002 min
 Response: 37735937
 Conc: 463.58 ng/ml



#31 AR-1260-1

R.T.: 6.262 min
 Delta R.T.: -0.007 min
 Response: 37136015
 Conc: 388.27 ng/ml



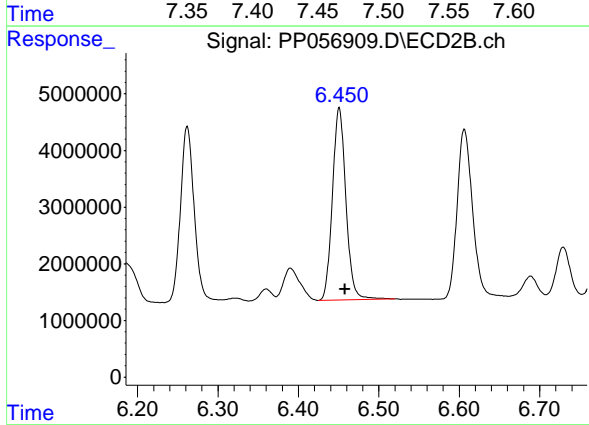
#32 AR-1260-2

R.T.: 7.484 min
 Delta R.T.: -0.002 min
 Response: 39623727
 Conc: 464.43 ng/ml

Instrument : ECD_P
 Client Sample Id : PB152102BS

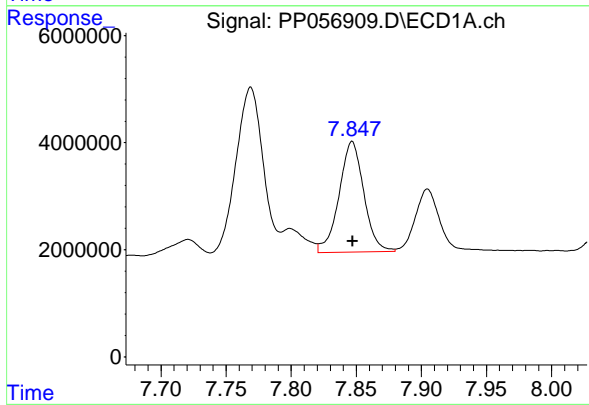
Manual Integrations
 APPROVED

Reviewed By :Yogesh Patel 04/14/2023
 Supervised By :Ankita Jodhani 04/14/2023



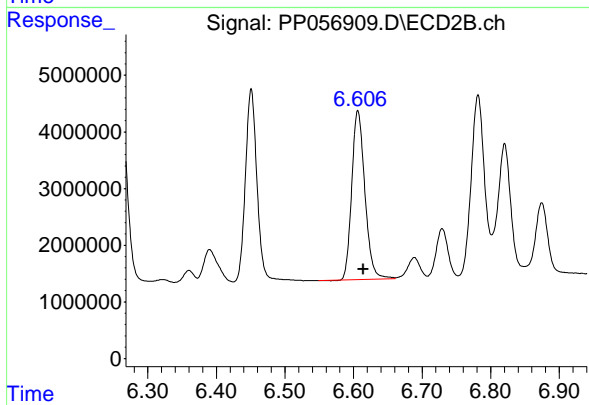
#32 AR-1260-2

R.T.: 6.451 min
 Delta R.T.: -0.007 min
 Response: 39582720
 Conc: 383.27 ng/ml



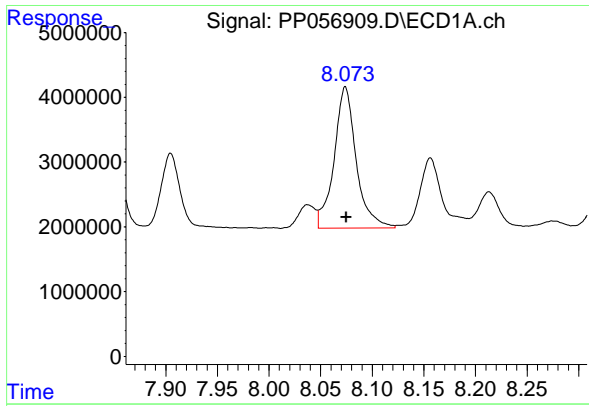
#33 AR-1260-3

R.T.: 7.847 min
 Delta R.T.: 0.000 min
 Response: 27405176
 Conc: 392.42 ng/ml



#33 AR-1260-3

R.T.: 6.606 min
 Delta R.T.: -0.008 min
 Response: 39726051
 Conc: 383.07 ng/ml



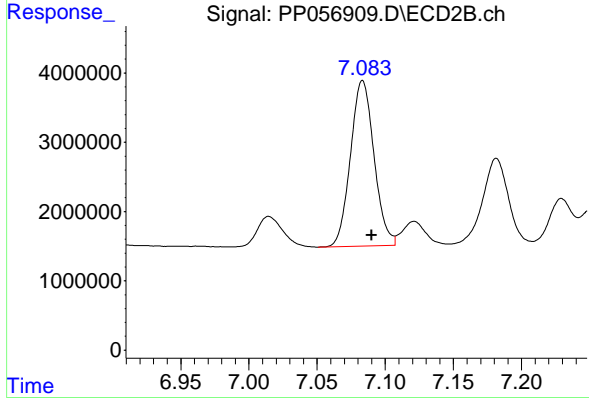
#34 AR-1260-4

R.T.: 8.074 min
 Delta R.T.: -0.001 min
 Response: 32636200
 Conc: 427.74 ng/ml

Instrument :
 ECD_P
 Client Sample Id :
 PB152102BS

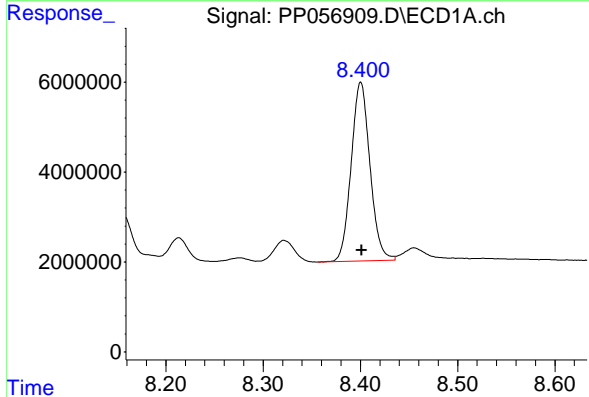
Manual Integrations
 APPROVED

Reviewed By :Yogesh Patel 04/14/2023
 Supervised By :Ankita Jodhani 04/14/2023



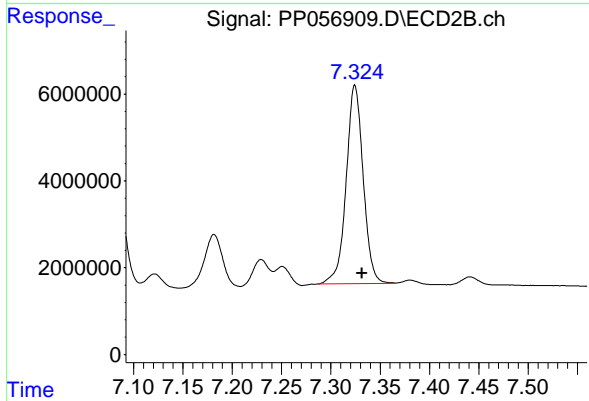
#34 AR-1260-4

R.T.: 7.083 min
 Delta R.T.: -0.007 min
 Response: 28749551
 Conc: 336.61 ng/ml



#35 AR-1260-5

R.T.: 8.400 min
 Delta R.T.: 0.000 min
 Response: 53410419
 Conc: 421.97 ng/ml



#35 AR-1260-5

R.T.: 7.324 min
 Delta R.T.: -0.008 min
 Response: 54877077
 Conc: 346.75 ng/ml m