

Data Path : Z:\pestpcbsrv\HPCHEM1\ECD_P\Data\PP041421\
 Data File : PP034895.D
 Signal(s) : Signal #1: ECD1A.CH Signal #2: ECD2B.CH
 Acq On : 14 Apr 2021 19:42
 Operator : DD\AJ
 Sample : AR1254CCC500
 Misc :
 ALS Vial : 4 Sample Multiplier: 1

Instrument :
 ECD_P
 ClientSampleId :
 AR1254CCC500

Integration File signal 1: autoint1.e
 Integration File signal 2: autoint2.e
 Quant Time: Apr 15 02:35:55 2021
 Quant Method : Z:\pestpcbsrv\HPCHEM1\ECD_P\methods\PP033021.M
 Quant Title : GC EXTRACTABLES
 QLast Update : Wed Mar 31 06:02:19 2021
 Response via : Initial Calibration
 Integrator: ChemStation 6890 Scale Mode: Small noise peaks clipped

Volume Inj. : 2 µl
 Signal #1 Phase : ZB-MR1 Signal #2 Phase: ZB-MR2
 Signal #1 Info : 30Mx0.32mmx 0.50µ Signal #2 Info : 30M x 0.32mm x 0.25µm

Compound	RT#1	RT#2	Resp#1	Resp#2	ng/ml	ng/ml

System Monitoring Compounds						
1) SA Tetrachlo...	4.844	4.259	4080298	2503755	53.488	55.735
2) SA Decachlor...	10.757	9.554	3881793	1492206	50.426	52.848
Target Compounds						
26) L6 AR-1254-1	7.060	6.376	1328656	950638	483.230	515.277
27) L6 AR-1254-2	7.289	6.532	2035028	828925	478.590	518.114
28) L6 AR-1254-3	7.668	6.953	2249167	1273224	492.786	510.155
29) L6 AR-1254-4	7.964	7.189	1469844	684732	475.391	520.890
30) L6 AR-1254-5	8.391	7.614	1755296	1082359	493.916	532.544

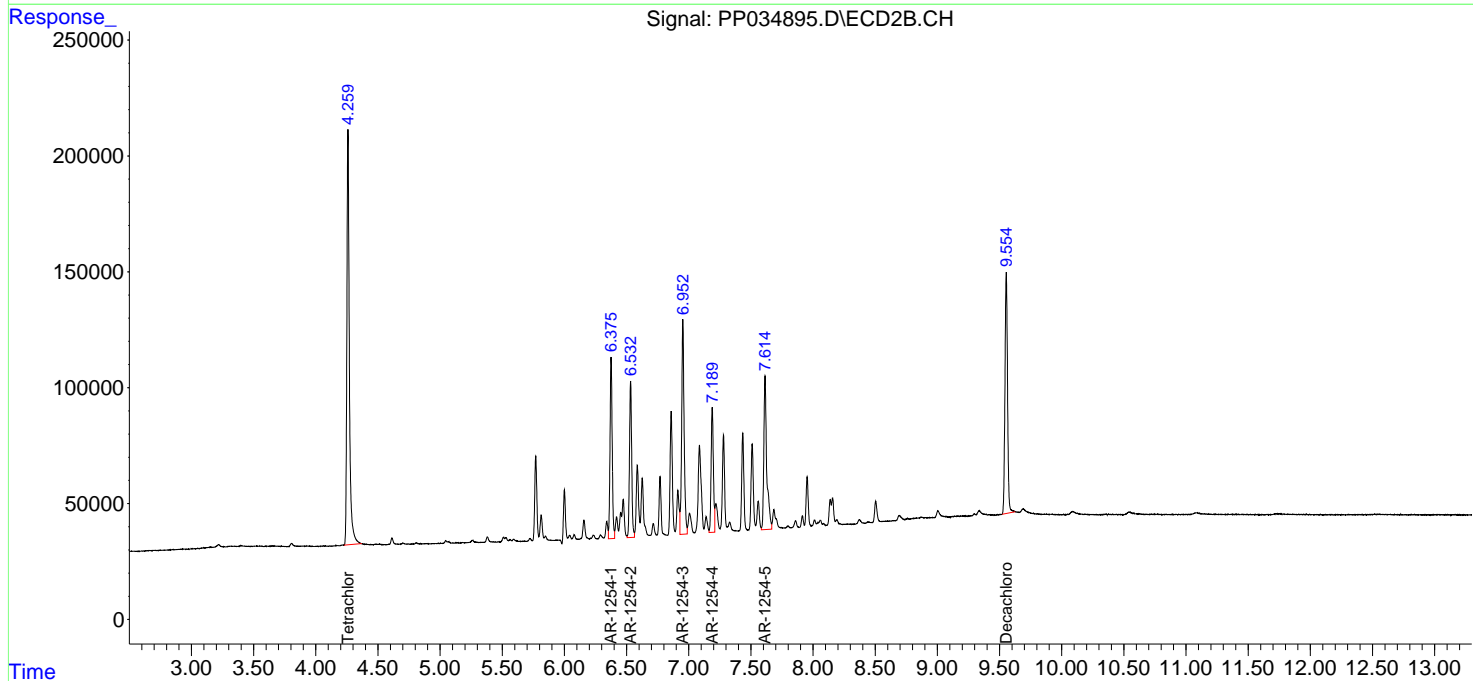
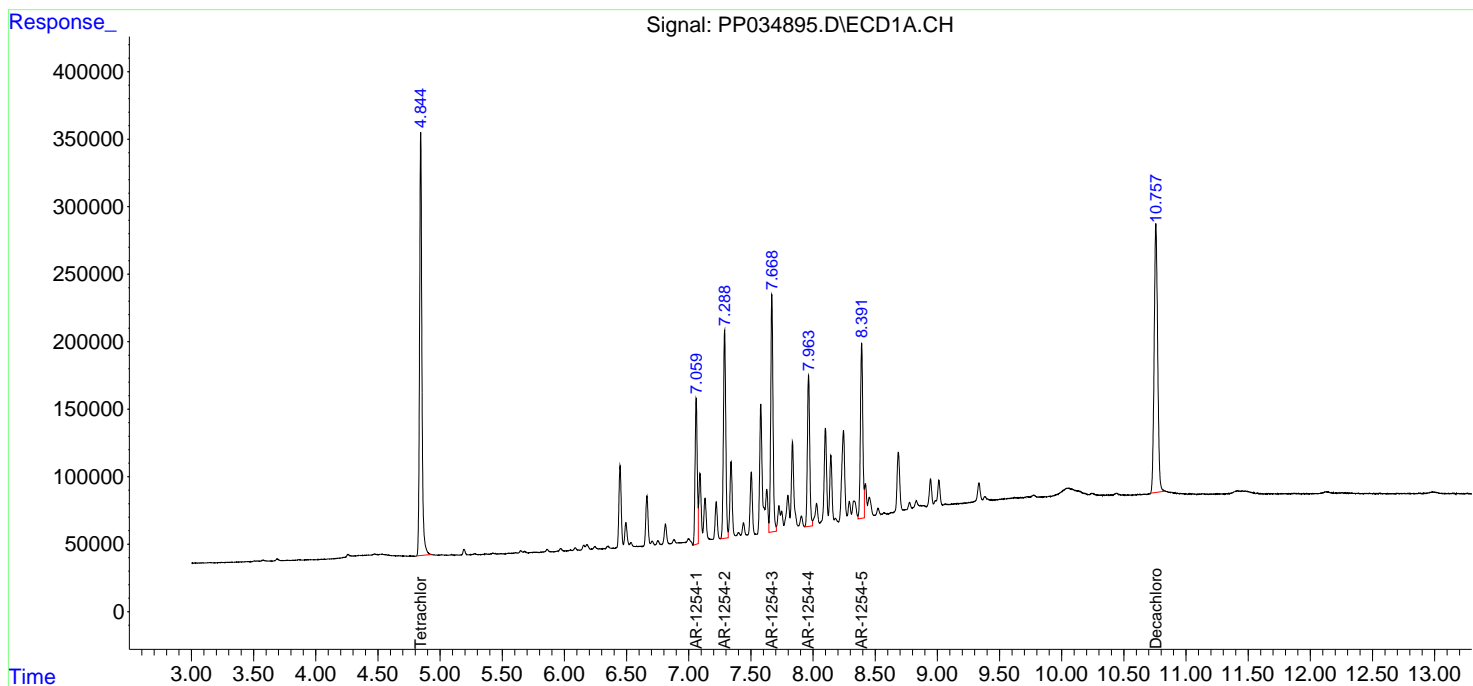
(f)=RT Delta > 1/2 Window (#)=Amounts differ by > 25% (m)=manual int.

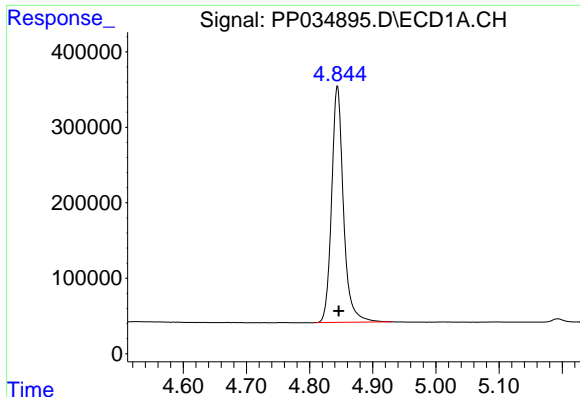
Data Path : Z:\pestpcbsrv\HPCHEM1\ECD_P\Data\PP041421\
 Data File : PP034895.D
 Signal(s) : Signal #1: ECD1A.CH Signal #2: ECD2B.CH
 Acq On : 14 Apr 2021 19:42
 Operator : DD\AJ
 Sample : AR1254CCC500
 Misc :
 ALS Vial : 4 Sample Multiplier: 1

Instrument :
 ECD_P
 ClientSampled :
 AR1254CCC500

Integration File signal 1: autoint1.e
 Integration File signal 2: autoint2.e
 Quant Time: Apr 15 02:35:55 2021
 Quant Method : Z:\pestpcbsrv\HPCHEM1\ECD_P\methods\PP033021.M
 Quant Title : GC EXTRACTABLES
 QLast Update : Wed Mar 31 06:02:19 2021
 Response via : Initial Calibration
 Integrator: ChemStation 6890 Scale Mode: Small noise peaks clipped

Volume Inj. : 2 µl
 Signal #1 Phase : ZB-MR1 Signal #2 Phase: ZB-MR2
 Signal #1 Info : 30Mx0.32mmx 0.50µ Signal #2 Info : 30M x 0.32mm x 0.25µm

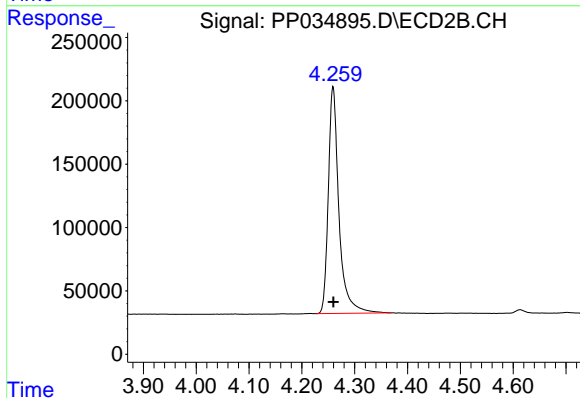




#1 Tetrachloro-m-xylene

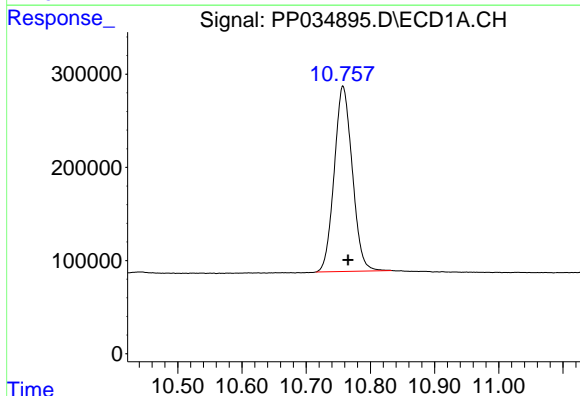
R.T.: 4.844 min
 Delta R.T.: -0.002 min
 Response: 4080298
 Conc: 53.49 ng/ml

Instrument :
 ECD_P
 ClientSampleId :
 AR1254CCC500



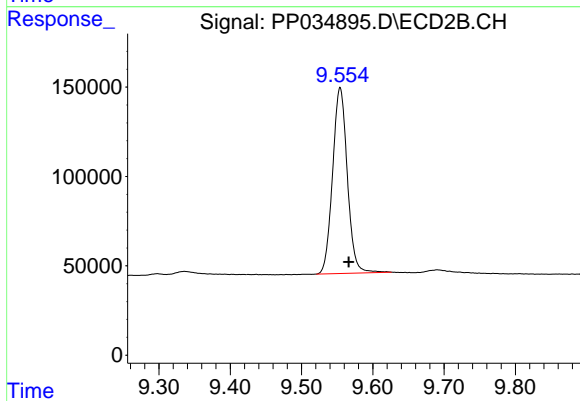
#1 Tetrachloro-m-xylene

R.T.: 4.259 min
 Delta R.T.: 0.000 min
 Response: 2503755
 Conc: 55.74 ng/ml



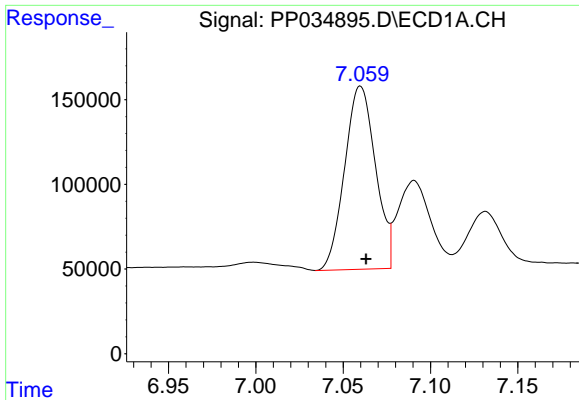
#2 Decachlorobiphenyl

R.T.: 10.757 min
 Delta R.T.: -0.008 min
 Response: 3881793
 Conc: 50.43 ng/ml



#2 Decachlorobiphenyl

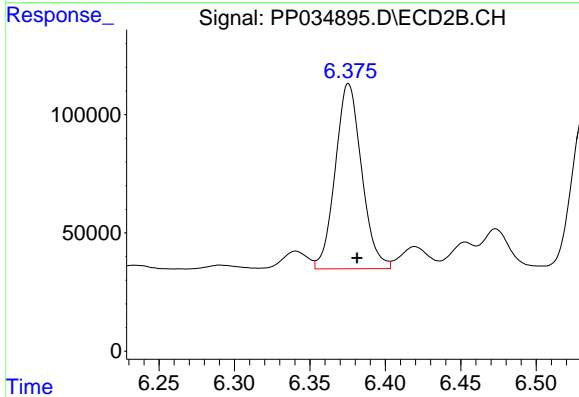
R.T.: 9.554 min
 Delta R.T.: -0.012 min
 Response: 1492206
 Conc: 52.85 ng/ml



#26 AR-1254-1

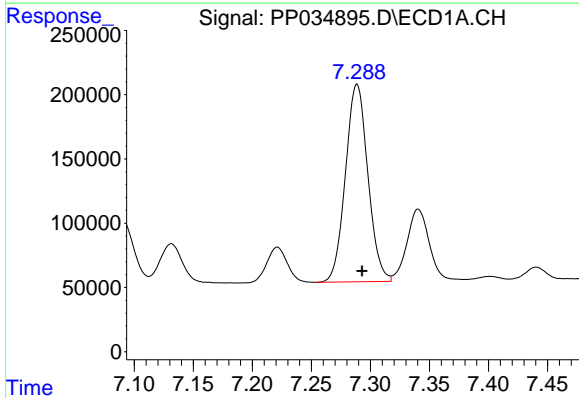
R.T.: 7.060 min
 Delta R.T.: -0.003 min
 Response: 1328656
 Conc: 483.23 ng/ml

Instrument :
 ECD_P
 ClientSampleId :
 AR1254CCC500



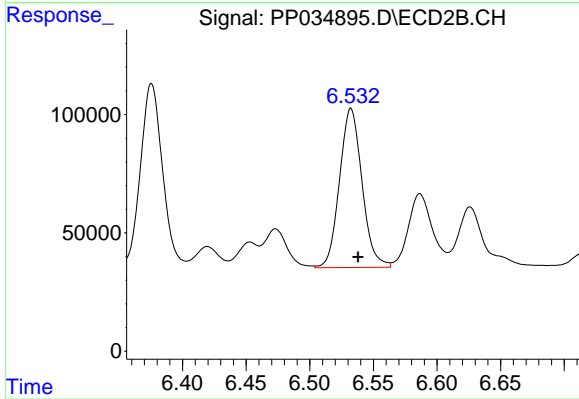
#26 AR-1254-1

R.T.: 6.376 min
 Delta R.T.: -0.006 min
 Response: 950638
 Conc: 515.28 ng/ml



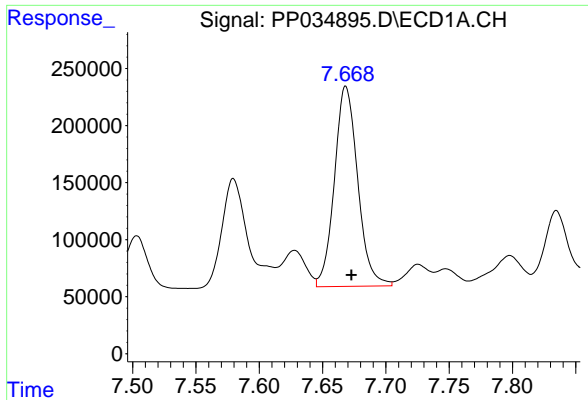
#27 AR-1254-2

R.T.: 7.289 min
 Delta R.T.: -0.004 min
 Response: 2035028
 Conc: 478.59 ng/ml



#27 AR-1254-2

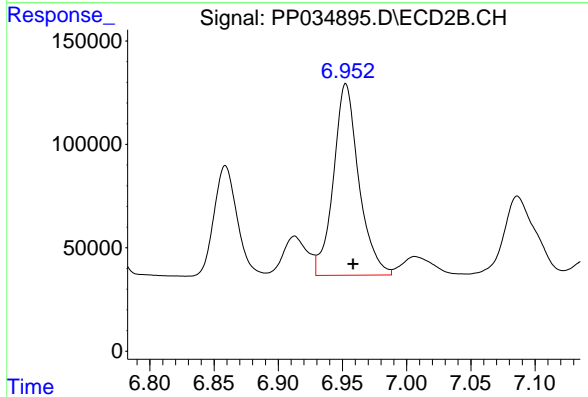
R.T.: 6.532 min
 Delta R.T.: -0.006 min
 Response: 828925
 Conc: 518.11 ng/ml



#28 AR-1254-3

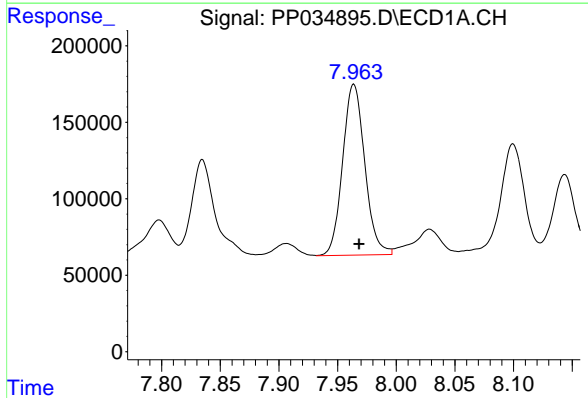
R.T.: 7.668 min
Delta R.T.: -0.004 min
Response: 2249167
Conc: 492.79 ng/ml

Instrument :
ECD_P
ClientSampleId :
AR1254CCC500



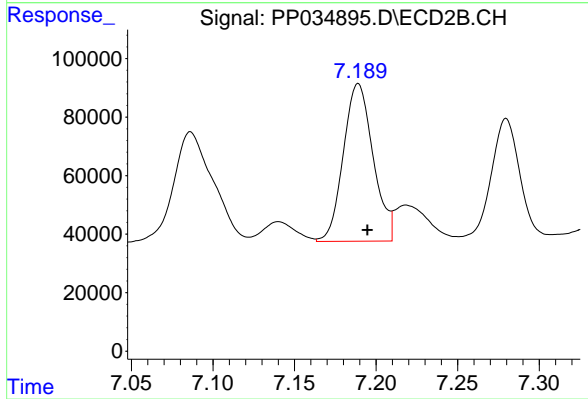
#28 AR-1254-3

R.T.: 6.953 min
Delta R.T.: -0.006 min
Response: 1273224
Conc: 510.15 ng/ml



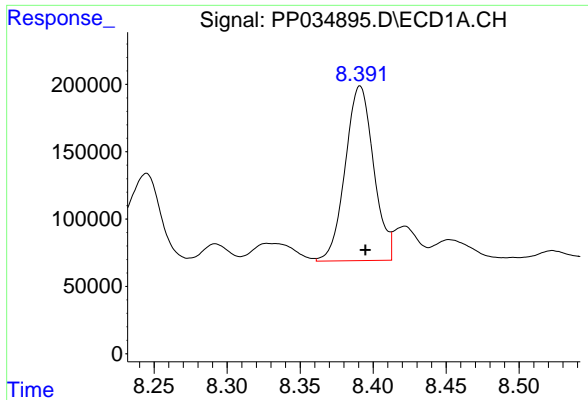
#29 AR-1254-4

R.T.: 7.964 min
Delta R.T.: -0.004 min
Response: 1469844
Conc: 475.39 ng/ml



#29 AR-1254-4

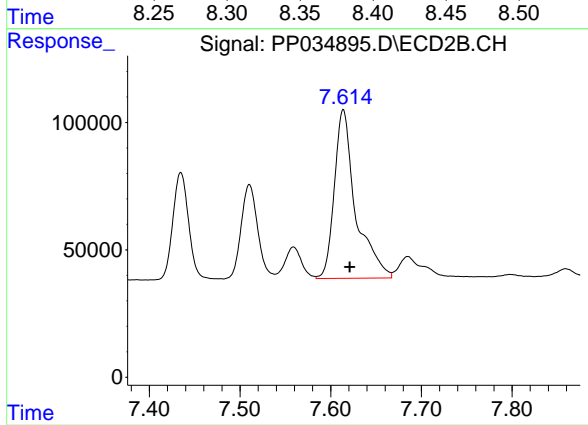
R.T.: 7.189 min
Delta R.T.: -0.006 min
Response: 684732
Conc: 520.89 ng/ml



#30 AR-1254-5

R.T.: 8.391 min
Delta R.T.: -0.004 min
Response: 1755296
Conc: 493.92 ng/ml

Instrument :
ECD_P
ClientSampleId :
AR1254CCC500



#30 AR-1254-5

R.T.: 7.614 min
Delta R.T.: -0.007 min
Response: 1082359
Conc: 532.54 ng/ml