

Data Path : Z:\pestpcbsrv\HPCHEM1\ECD_P\Data\PP041522\
 Data File : PP046033.D
 Signal(s) : Signal #1: ECD1A.ch Signal #2: ECD2B.ch
 Acq On : 14 Apr 2022 12:03
 Operator : YP\AJ
 Sample : AR1254CCC500
 Misc :
 ALS Vial : 6 Sample Multiplier: 1

Instrument :
 ECD_P
 ClientSampleId :
 AR1254CCC500

Integration File signal 1: autoint1.e
 Integration File signal 2: autoint2.e
 Quant Time: Apr 14 17:06:12 2022
 Quant Method : Z:\pestpcbsrv\HPCHEM1\ECD_P\methods\PP041222.M
 Quant Title : GC EXTRACTABLES
 QLast Update : Tue Apr 12 05:31:12 2022
 Response via : Initial Calibration
 Integrator: ChemStation

Volume Inj. : 2 µl
 Signal #1 Phase : ZB-MR1 Signal #2 Phase: ZB-MR2
 Signal #1 Info : 30Mx0.32mmx 0.50µ Signal #2 Info : 30M x 0.32mm x 0.25µm

Compound	RT#1	RT#2	Resp#1	Resp#2	ng/ml	ng/ml

System Monitoring Compounds						
1) SA Tetrachlo...	3.874	3.137	139.4E6	92690208	56.668	58.333
2) SA Decachlor...	9.977	8.471	97966457	80315198	59.679	56.349
Target Compounds						
26) L6 AR-1254-1	6.046	5.122	33179379	48149247	401.449	545.856 #
27) L6 AR-1254-2	6.285	5.282	70476673	40838377	572.303	541.105
28) L6 AR-1254-3	6.685	5.712	71600613	67387288	595.648	572.971
29) L6 AR-1254-4	6.998	5.961	49447516	43825445	560.654	580.739
30) L6 AR-1254-5	7.459	6.410	50265063	60207618	536.576	587.664

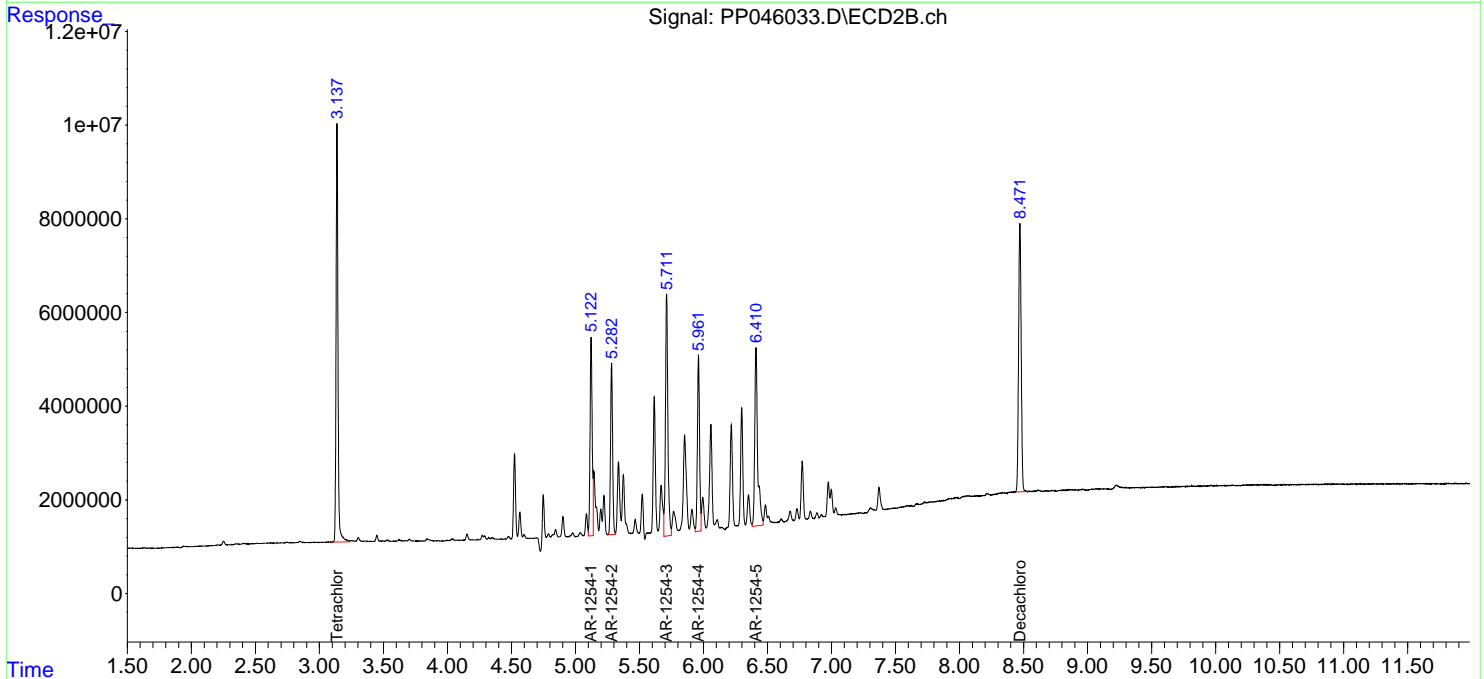
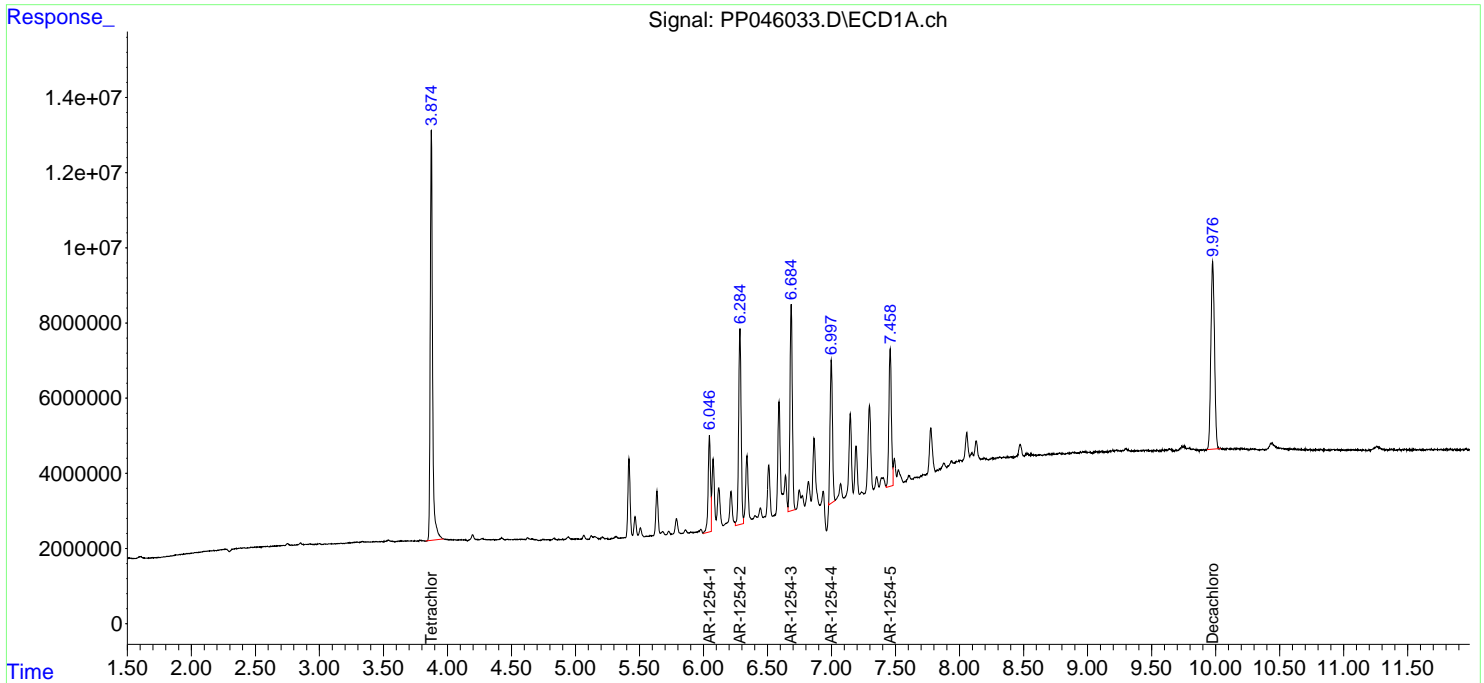
(f)=RT Delta > 1/2 Window (#)=Amounts differ by > 25% (m)=manual int.

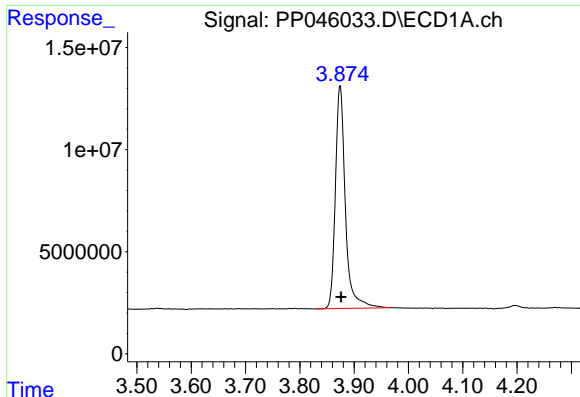
Data Path : Z:\pestpcbsrv\HPCHEM1\ECD_P\Data\PP041522\
 Data File : PP046033.D
 Signal(s) : Signal #1: ECD1A.ch Signal #2: ECD2B.ch
 Acq On : 14 Apr 2022 12:03
 Operator : YP\AJ
 Sample : AR1254CCC500
 Misc :
 ALS Vial : 6 Sample Multiplier: 1

Instrument :
 ECD_P
 ClientSampleId :
 AR1254CCC500

Integration File signal 1: autoint1.e
 Integration File signal 2: autoint2.e
 Quant Time: Apr 14 17:06:12 2022
 Quant Method : Z:\pestpcbsrv\HPCHEM1\ECD_P\methods\PP041222.M
 Quant Title : GC EXTRACTABLES
 QLast Update : Tue Apr 12 05:31:12 2022
 Response via : Initial Calibration
 Integrator: ChemStation

Volume Inj. : 2 µl
 Signal #1 Phase : ZB-MR1 Signal #2 Phase: ZB-MR2
 Signal #1 Info : 30Mx0.32mmx 0.50µ Signal #2 Info : 30M x 0.32mm x 0.25µm

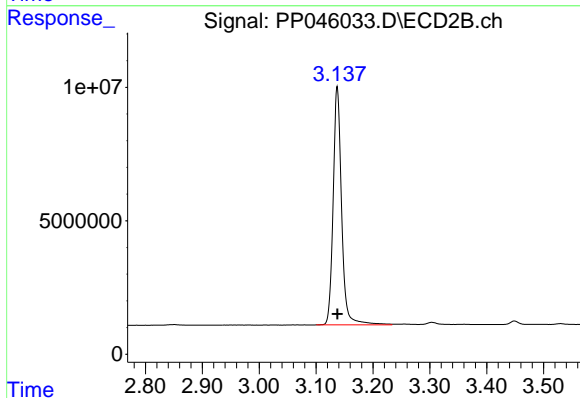




#1 Tetrachloro-m-xylene

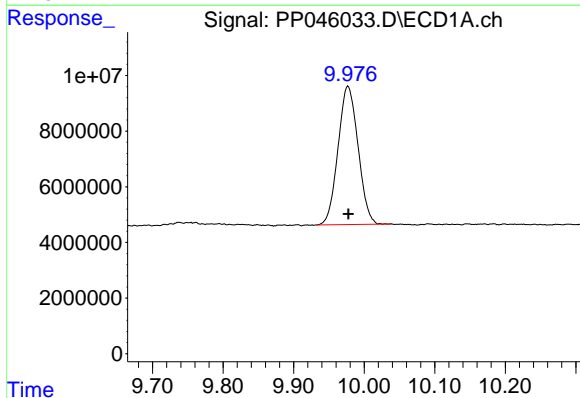
R.T.: 3.874 min
 Delta R.T.: -0.002 min
 Response: 139387109
 Conc: 56.67 ng/ml

Instrument :
 ECD_P
 ClientSampleId :
 AR1254CCC500



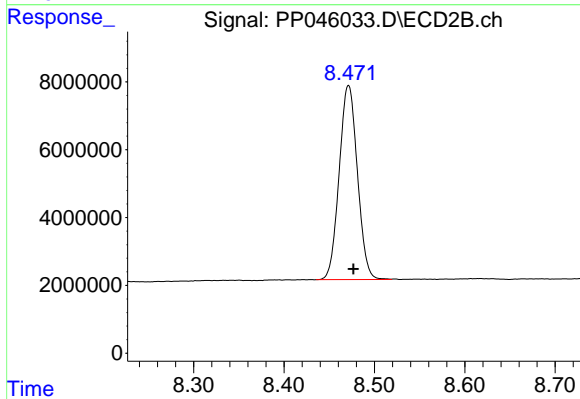
#1 Tetrachloro-m-xylene

R.T.: 3.137 min
 Delta R.T.: 0.000 min
 Response: 92690208
 Conc: 58.33 ng/ml



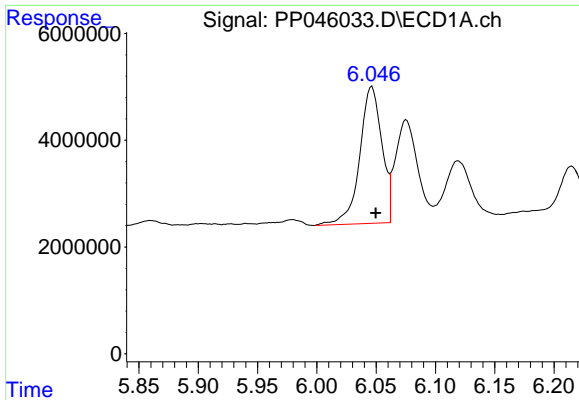
#2 Decachlorobiphenyl

R.T.: 9.977 min
 Delta R.T.: 0.000 min
 Response: 97966457
 Conc: 59.68 ng/ml



#2 Decachlorobiphenyl

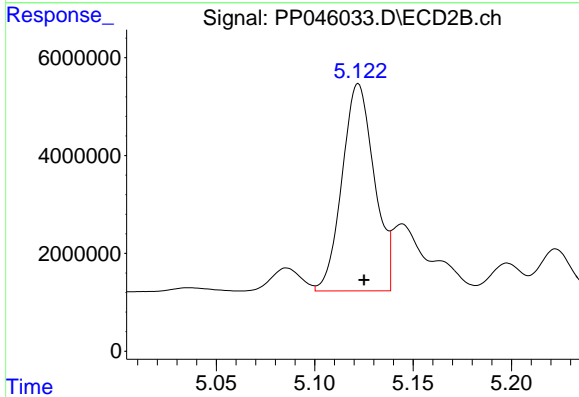
R.T.: 8.471 min
 Delta R.T.: -0.006 min
 Response: 80315198
 Conc: 56.35 ng/ml



#26 AR-1254-1

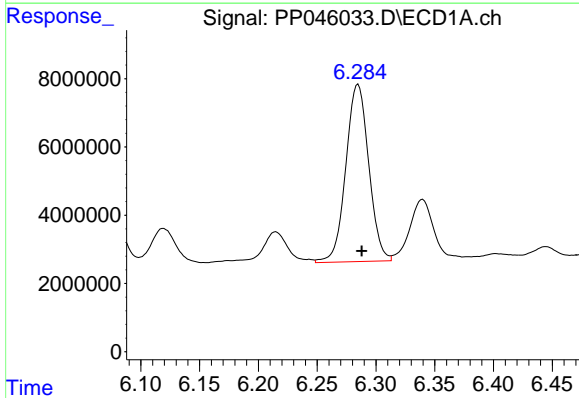
R.T.: 6.046 min
 Delta R.T.: -0.003 min
 Response: 33179379
 Conc: 401.45 ng/ml

Instrument :
 ECD_P
 ClientSampleId :
 AR1254CCC500



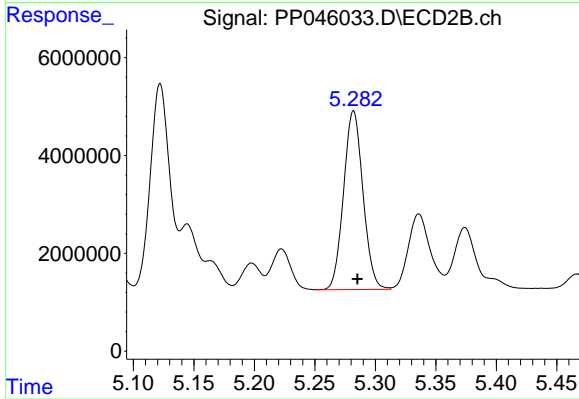
#26 AR-1254-1

R.T.: 5.122 min
 Delta R.T.: -0.003 min
 Response: 48149247
 Conc: 545.86 ng/ml



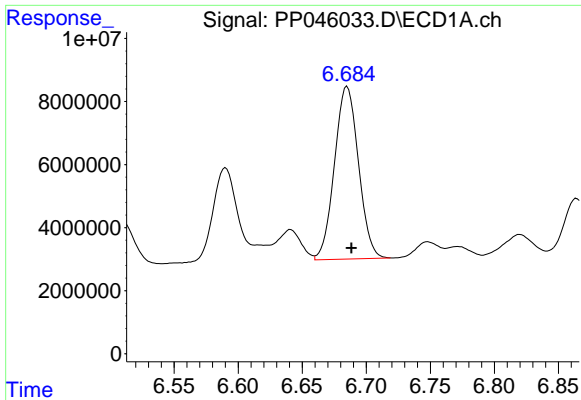
#27 AR-1254-2

R.T.: 6.285 min
 Delta R.T.: -0.003 min
 Response: 70476673
 Conc: 572.30 ng/ml



#27 AR-1254-2

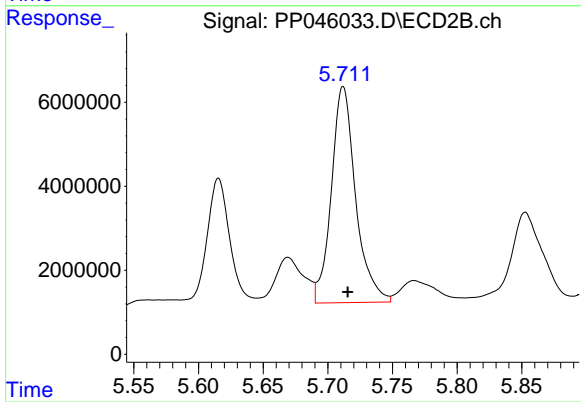
R.T.: 5.282 min
 Delta R.T.: -0.003 min
 Response: 40838377
 Conc: 541.11 ng/ml



#28 AR-1254-3

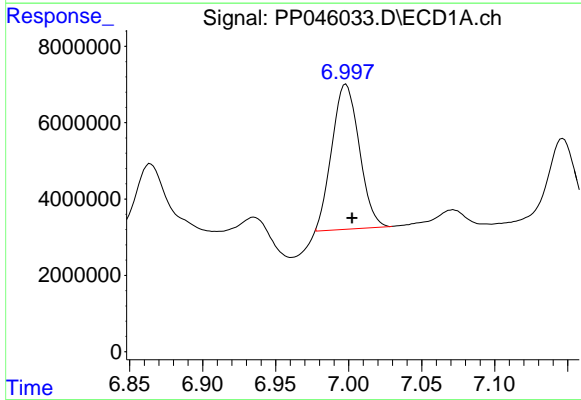
R.T.: 6.685 min
 Delta R.T.: -0.003 min
 Response: 71600613
 Conc: 595.65 ng/ml

Instrument :
 ECD_P
 ClientSampleId :
 AR1254CCC500



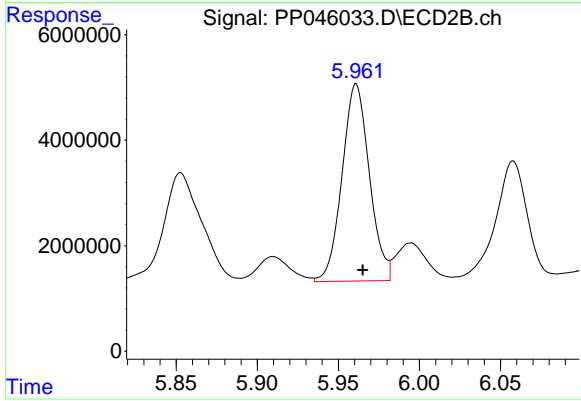
#28 AR-1254-3

R.T.: 5.712 min
 Delta R.T.: -0.003 min
 Response: 67387288
 Conc: 572.97 ng/ml



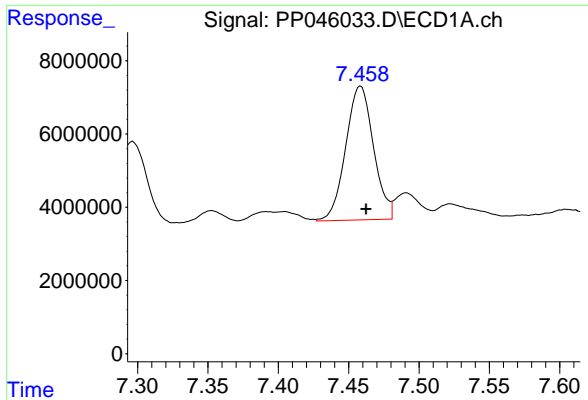
#29 AR-1254-4

R.T.: 6.998 min
 Delta R.T.: -0.004 min
 Response: 49447516
 Conc: 560.65 ng/ml



#29 AR-1254-4

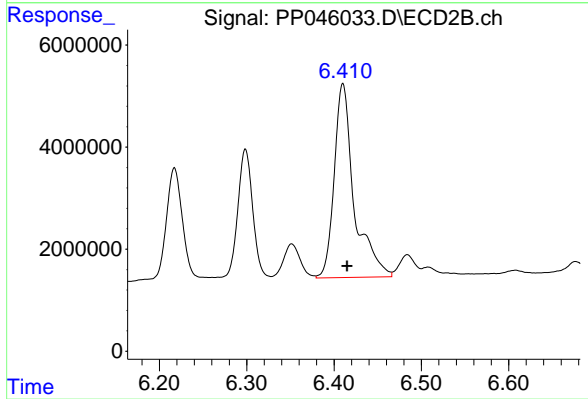
R.T.: 5.961 min
 Delta R.T.: -0.004 min
 Response: 43825445
 Conc: 580.74 ng/ml



#30 AR-1254-5

R.T.: 7.459 min
Delta R.T.: -0.004 min
Response: 50265063
Conc: 536.58 ng/ml

Instrument :
ECD_P
ClientSampleId :
AR1254CCC500



#30 AR-1254-5

R.T.: 6.410 min
Delta R.T.: -0.005 min
Response: 60207618
Conc: 587.66 ng/ml