

Data Path : Z:\pestpcbsrv\HPCHEM1\ECD_P\Data\PP041522\
 Data File : PP046081.D
 Signal(s) : Signal #1: ECD1A.ch Signal #2: ECD2B.ch
 Acq On : 15 Apr 2022 02:30
 Operator : YP\AJ
 Sample : PB144083BSD
 Misc :
 ALS Vial : 53 Sample Multiplier: 1

Instrument :
 ECD_P
 ClientSampleId :
 PB144083BSD

Integration File signal 1: autoint1.e
 Integration File signal 2: autoint2.e
 Quant Time: Apr 15 05:48:36 2022
 Quant Method : Z:\pestpcbsrv\HPCHEM1\ECD_P\methods\PP041222.M
 Quant Title : GC EXTRACTABLES
 QLast Update : Tue Apr 12 05:31:12 2022
 Response via : Initial Calibration
 Integrator: ChemStation

Volume Inj. : 2 µl
 Signal #1 Phase : ZB-MR2 Signal #2 Phase: ZB-MR2
 Signal #1 Info : 30Mx0.32mmx 0.50µ Signal #2 Info : 30M x 0.32mm x 0.25µm

Compound	RT#1	RT#2	Resp#1	Resp#2	ng/ml	ng/ml

System Monitoring Compounds						
1) SA Tetrachlo...	3.874	3.139	54114032	36246574	22.000	22.811
2) SA Decachlor...	9.970	8.471	36136169	35285050	22.013	24.756
Target Compounds						
3) L1 AR-1016-1	5.121	4.273	37865529	29635534	493.877	504.633
4) L1 AR-1016-2	5.144	4.291	55989731	41860585	484.184	501.054
5) L1 AR-1016-3	5.210	4.476	33577924	22623017	487.346	512.137
6) L1 AR-1016-4	5.316	4.524	28200853	17814612	479.244	499.223
7) L1 AR-1016-5	5.635	4.748	26387421	22939524	478.508	482.880
31) L7 AR-1260-1	6.861	5.852	43774774	43299568	495.895	547.075
32) L7 AR-1260-2	7.144	6.058	51783032	51946386	505.469	554.927
33) L7 AR-1260-3	7.538	6.220	34788201	48905705	422.264	552.086 #
34) L7 AR-1260-4	7.786	6.730	38154458	35301409	450.255	491.620
35) L7 AR-1260-5	8.126	6.998	73213755	84155538	445.794	495.426

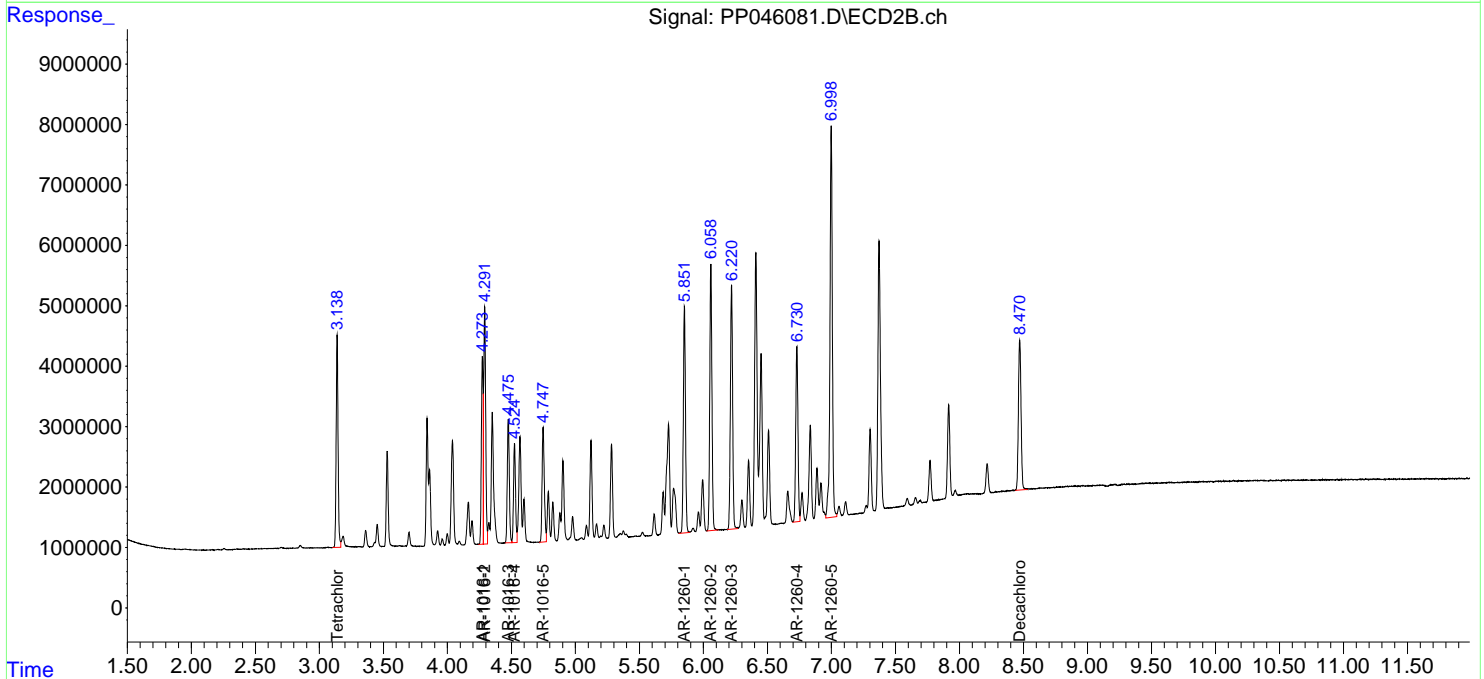
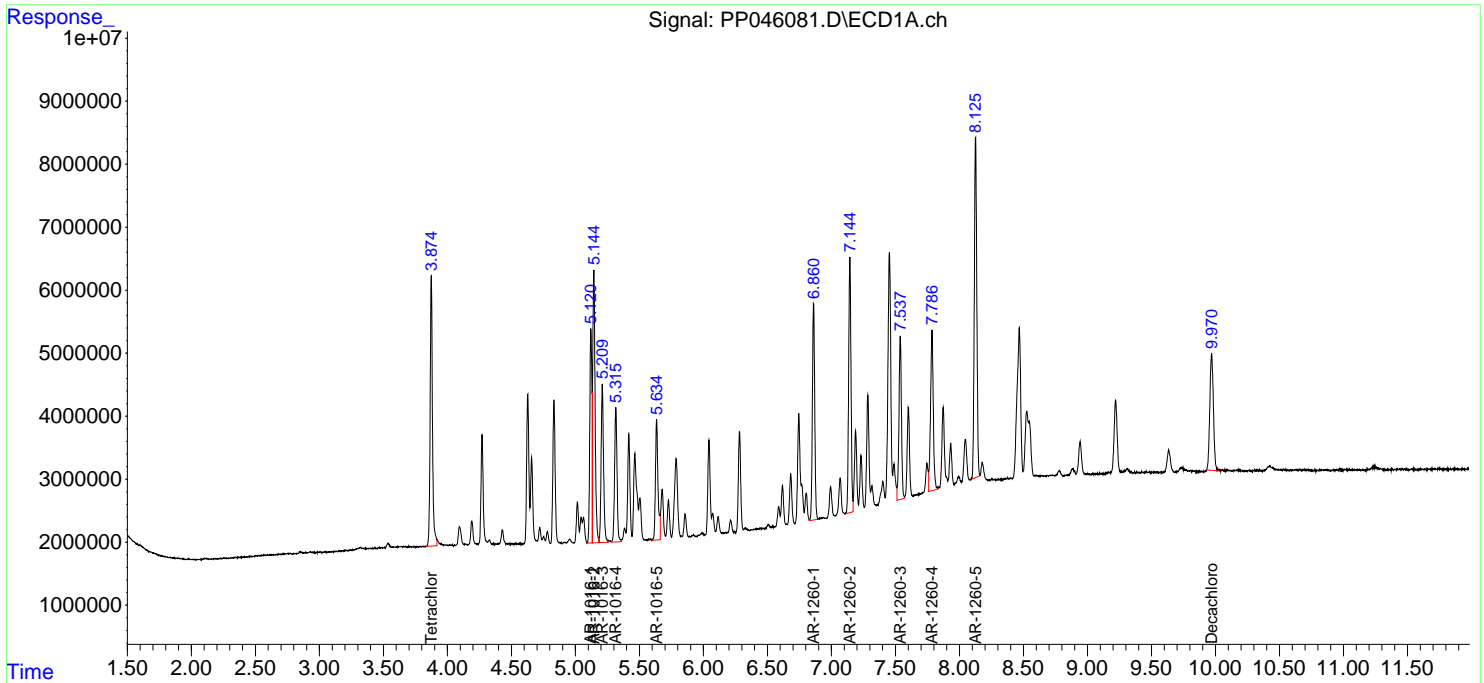
(f)=RT Delta > 1/2 Window (#)=Amounts differ by > 25% (m)=manual int.

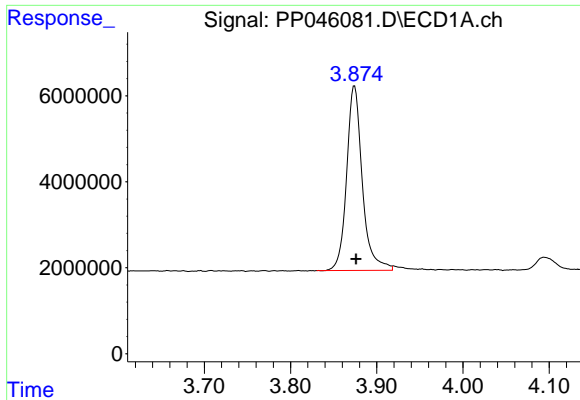
Data Path : Z:\pestpcbsrv\HPCHEM1\ECD_P\Data\PP041522\
 Data File : PP046081.D
 Signal(s) : Signal #1: ECD1A.ch Signal #2: ECD2B.ch
 Acq On : 15 Apr 2022 02:30
 Operator : YP\AJ
 Sample : PB144083BSD
 Misc :
 ALS Vial : 53 Sample Multiplier: 1

Instrument :
 ECD_P
 ClientSampleId :
 PB144083BSD

Integration File signal 1: autoint1.e
 Integration File signal 2: autoint2.e
 Quant Time: Apr 15 05:48:36 2022
 Quant Method : Z:\pestpcbsrv\HPCHEM1\ECD_P\methods\PP041222.M
 Quant Title : GC EXTRACTABLES
 QLast Update : Tue Apr 12 05:31:12 2022
 Response via : Initial Calibration
 Integrator: ChemStation

Volume Inj. : 2 µl
 Signal #1 Phase : ZB-MR1 Signal #2 Phase: ZB-MR2
 Signal #1 Info : 30Mx0.32mmx 0.50µ Signal #2 Info : 30M x 0.32mm x 0.25µm

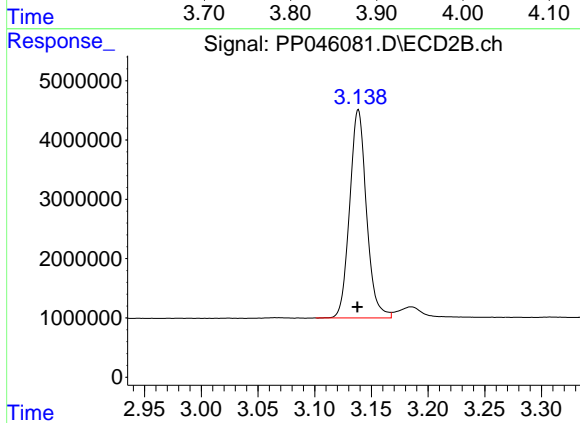




#1 Tetrachloro-m-xylene

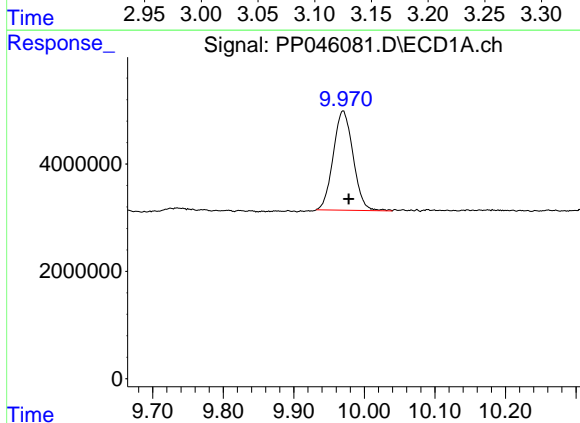
R.T.: 3.874 min
 Delta R.T.: -0.002 min
 Response: 54114032
 Conc: 22.00 ng/ml

Instrument :
 ECD_P
 ClientSampleId :
 PB144083BSD



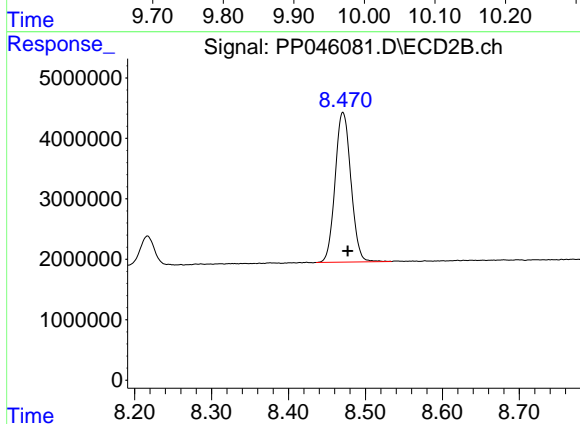
#1 Tetrachloro-m-xylene

R.T.: 3.139 min
 Delta R.T.: 0.000 min
 Response: 36246574
 Conc: 22.81 ng/ml



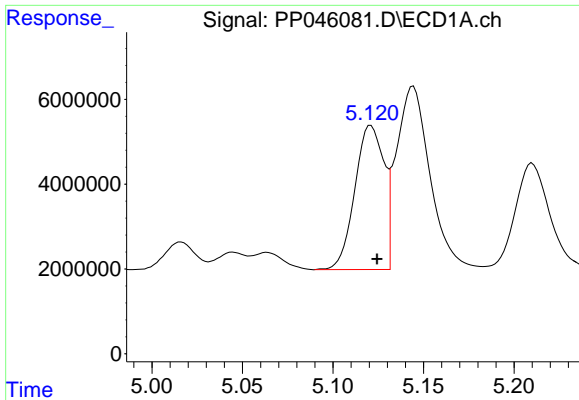
#2 Decachlorobiphenyl

R.T.: 9.970 min
 Delta R.T.: -0.008 min
 Response: 36136169
 Conc: 22.01 ng/ml



#2 Decachlorobiphenyl

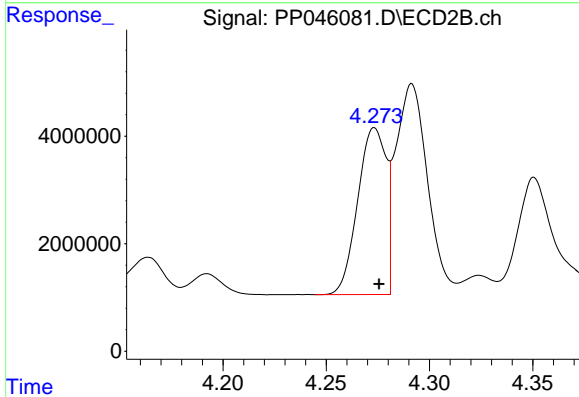
R.T.: 8.471 min
 Delta R.T.: -0.006 min
 Response: 35285050
 Conc: 24.76 ng/ml



#3 AR-1016-1

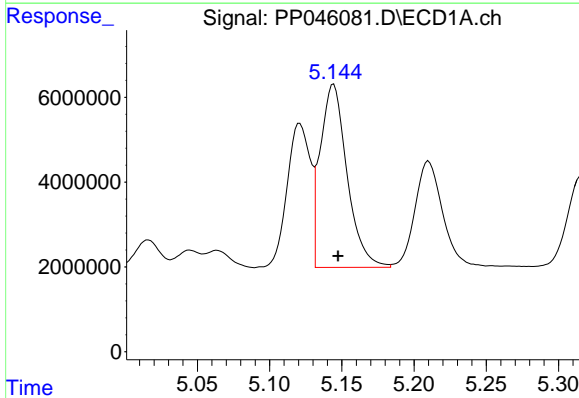
R.T.: 5.121 min
 Delta R.T.: -0.003 min
 Response: 37865529
 Conc: 493.88 ng/ml

Instrument :
 ECD_P
 ClientSampleId :
 PB144083BSD



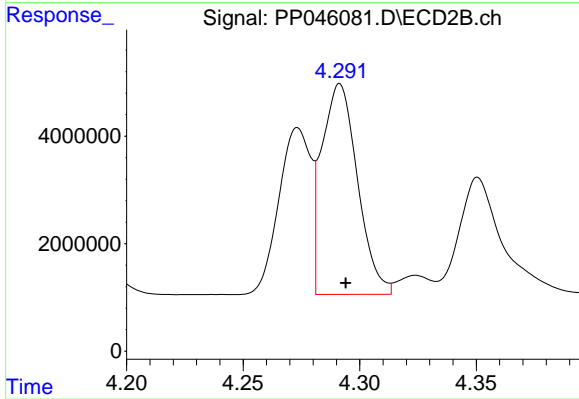
#3 AR-1016-1

R.T.: 4.273 min
 Delta R.T.: -0.002 min
 Response: 29635534
 Conc: 504.63 ng/ml



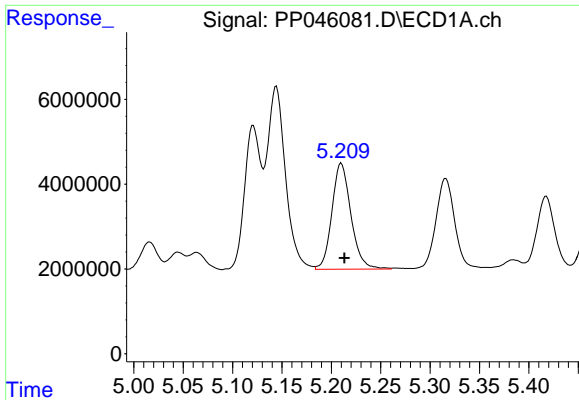
#4 AR-1016-2

R.T.: 5.144 min
 Delta R.T.: -0.003 min
 Response: 55989731
 Conc: 484.18 ng/ml



#4 AR-1016-2

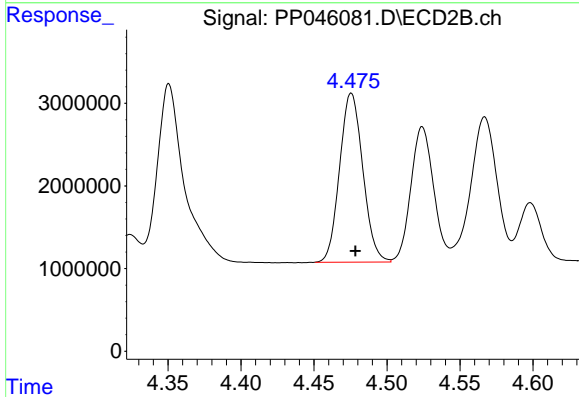
R.T.: 4.291 min
 Delta R.T.: -0.003 min
 Response: 41860585
 Conc: 501.05 ng/ml



#5 AR-1016-3

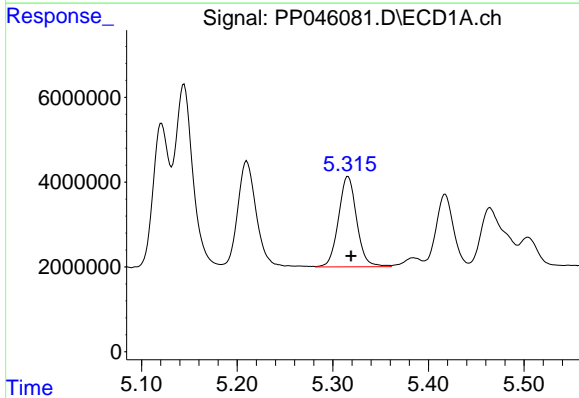
R.T.: 5.210 min
 Delta R.T.: -0.003 min
 Response: 33577924
 Conc: 487.35 ng/ml

Instrument :
 ECD_P
 ClientSampleId :
 PB144083BSD



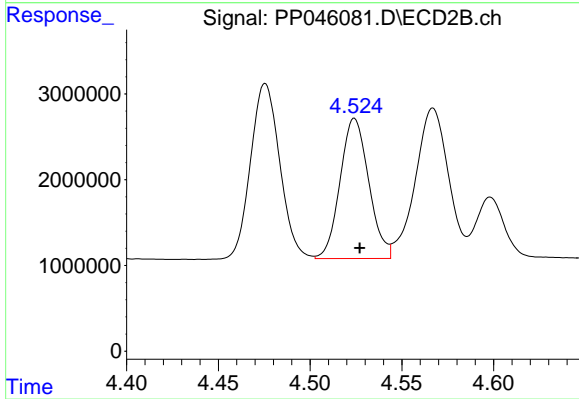
#5 AR-1016-3

R.T.: 4.476 min
 Delta R.T.: -0.003 min
 Response: 22623017
 Conc: 512.14 ng/ml



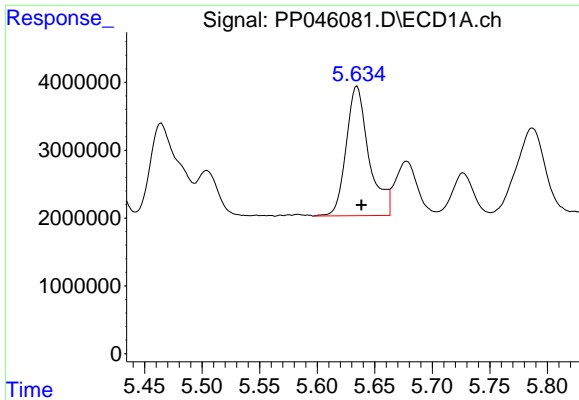
#6 AR-1016-4

R.T.: 5.316 min
 Delta R.T.: -0.003 min
 Response: 28200853
 Conc: 479.24 ng/ml



#6 AR-1016-4

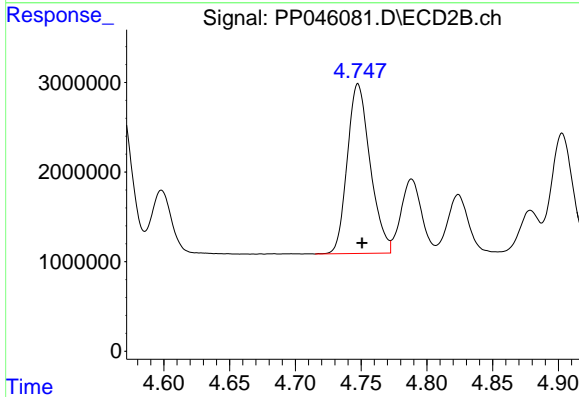
R.T.: 4.524 min
 Delta R.T.: -0.003 min
 Response: 17814612
 Conc: 499.22 ng/ml



#7 AR-1016-5

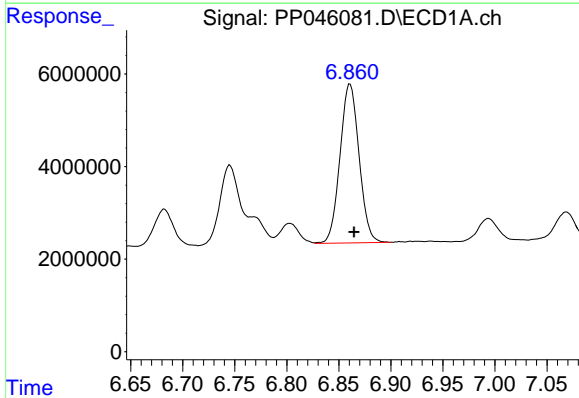
R.T.: 5.635 min
 Delta R.T.: -0.004 min
 Response: 26387421
 Conc: 478.51 ng/ml

Instrument :
 ECD_P
 ClientSampleId :
 PB144083BSD



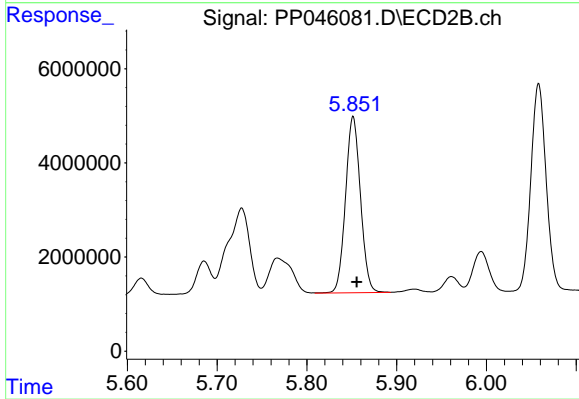
#7 AR-1016-5

R.T.: 4.748 min
 Delta R.T.: -0.003 min
 Response: 22939524
 Conc: 482.88 ng/ml



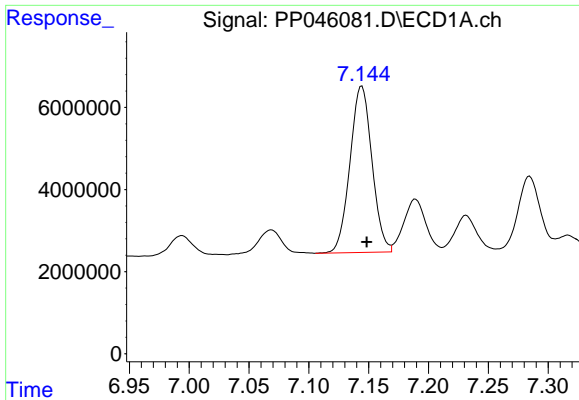
#31 AR-1260-1

R.T.: 6.861 min
 Delta R.T.: -0.004 min
 Response: 43774774
 Conc: 495.89 ng/ml



#31 AR-1260-1

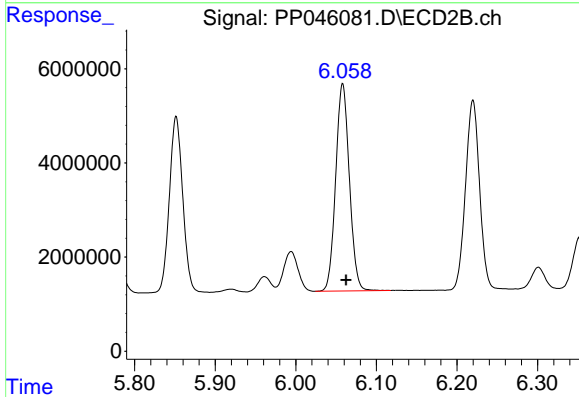
R.T.: 5.852 min
 Delta R.T.: -0.004 min
 Response: 43299568
 Conc: 547.08 ng/ml



#32 AR-1260-2

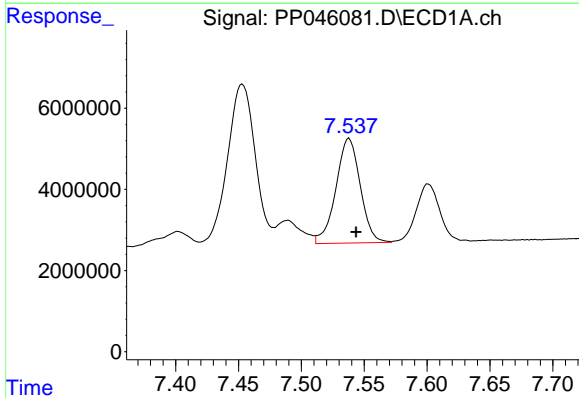
R.T.: 7.144 min
 Delta R.T.: -0.004 min
 Response: 51783032
 Conc: 505.47 ng/ml

Instrument :
 ECD_P
 ClientSampleId :
 PB144083BSD



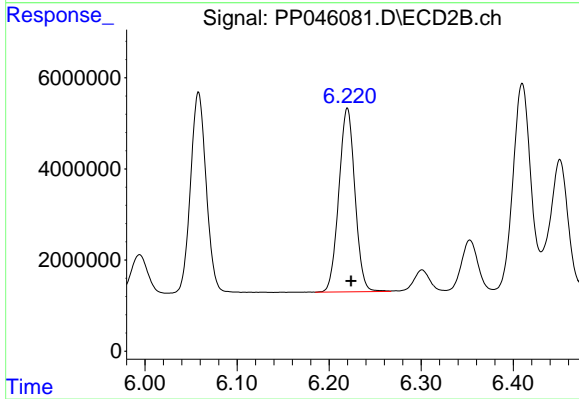
#32 AR-1260-2

R.T.: 6.058 min
 Delta R.T.: -0.004 min
 Response: 51946386
 Conc: 554.93 ng/ml



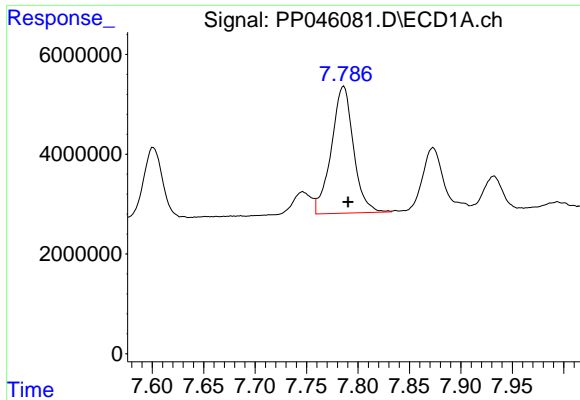
#33 AR-1260-3

R.T.: 7.538 min
 Delta R.T.: -0.005 min
 Response: 34788201
 Conc: 422.26 ng/ml



#33 AR-1260-3

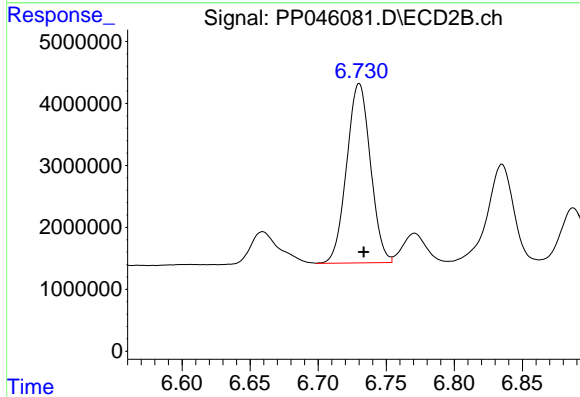
R.T.: 6.220 min
 Delta R.T.: -0.004 min
 Response: 48905705
 Conc: 552.09 ng/ml



#34 AR-1260-4

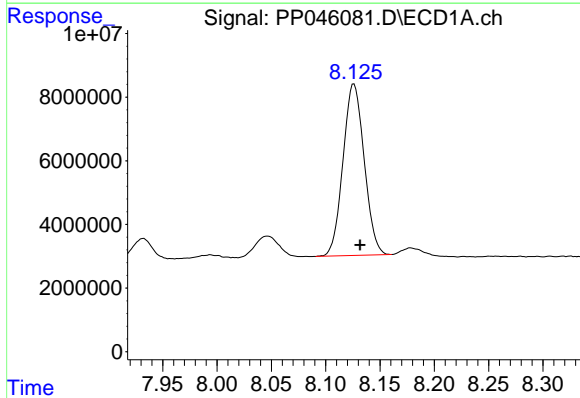
R.T.: 7.786 min
 Delta R.T.: -0.004 min
 Response: 38154458
 Conc: 450.25 ng/ml

Instrument :
 ECD_P
 ClientSampleId :
 PB144083BSD



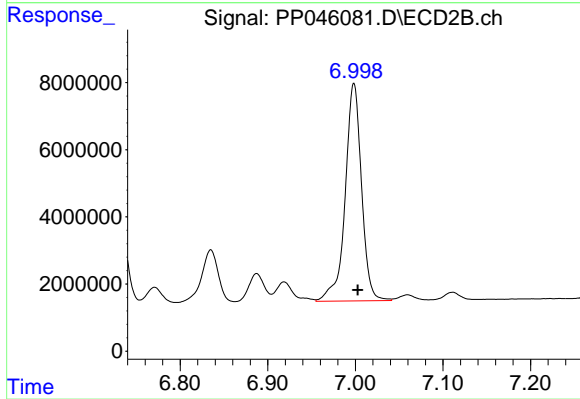
#34 AR-1260-4

R.T.: 6.730 min
 Delta R.T.: -0.003 min
 Response: 35301409
 Conc: 491.62 ng/ml



#35 AR-1260-5

R.T.: 8.126 min
 Delta R.T.: -0.006 min
 Response: 73213755
 Conc: 445.79 ng/ml



#35 AR-1260-5

R.T.: 6.998 min
 Delta R.T.: -0.004 min
 Response: 84155538
 Conc: 495.43 ng/ml