

Data Path : Z:\pestpcbsrv\HPCHEM1\ECD_P\Data\PP041522\
 Data File : PP046089.D
 Signal(s) : Signal #1: ECD1A.ch Signal #2: ECD2B.ch
 Acq On : 15 Apr 2022 04:32
 Operator : YP\AJ
 Sample : N2389-07
 Misc :
 ALS Vial : 61 Sample Multiplier: 1

Instrument :
 ECD_P
ClientSampleId :
 33637-8

Manual Integrations
APPROVED

Reviewed By :Yogesh Patel 04/15/2022
 Supervised By :mohammad ahmed 04/15/2022

Integration File signal 1: autoint1.e
 Integration File signal 2: autoint2.e
 Quant Time: Apr 15 05:52:07 2022
 Quant Method : Z:\pestpcbsrv\HPCHEM1\ECD_P\methods\PP041222.M
 Quant Title : GC EXTRACTABLES
 QLast Update : Tue Apr 12 05:31:12 2022
 Response via : Initial Calibration
 Integrator: ChemStation

Volume Inj. : 2 µl
 Signal #1 Phase : ZB-MR1 Signal #2 Phase: ZB-MR2
 Signal #1 Info : 30Mx0.32mmx 0.50µ Signal #2 Info : 30M x 0.32mm x 0.25µm

Compound	RT#1	RT#2	Resp#1	Resp#2	ng/ml	ng/ml

System Monitoring Compounds						
1) SA Tetrachlo...	3.889	3.140	23140968	145.7E6	9.408m	91.678m#
2) SA Decachlor...	9.966	8.471	16742932	24169747	10.199	16.957m#

Target Compounds

(f)=RT Delta > 1/2 Window (#)=Amounts differ by > 25% (m)=manual int.

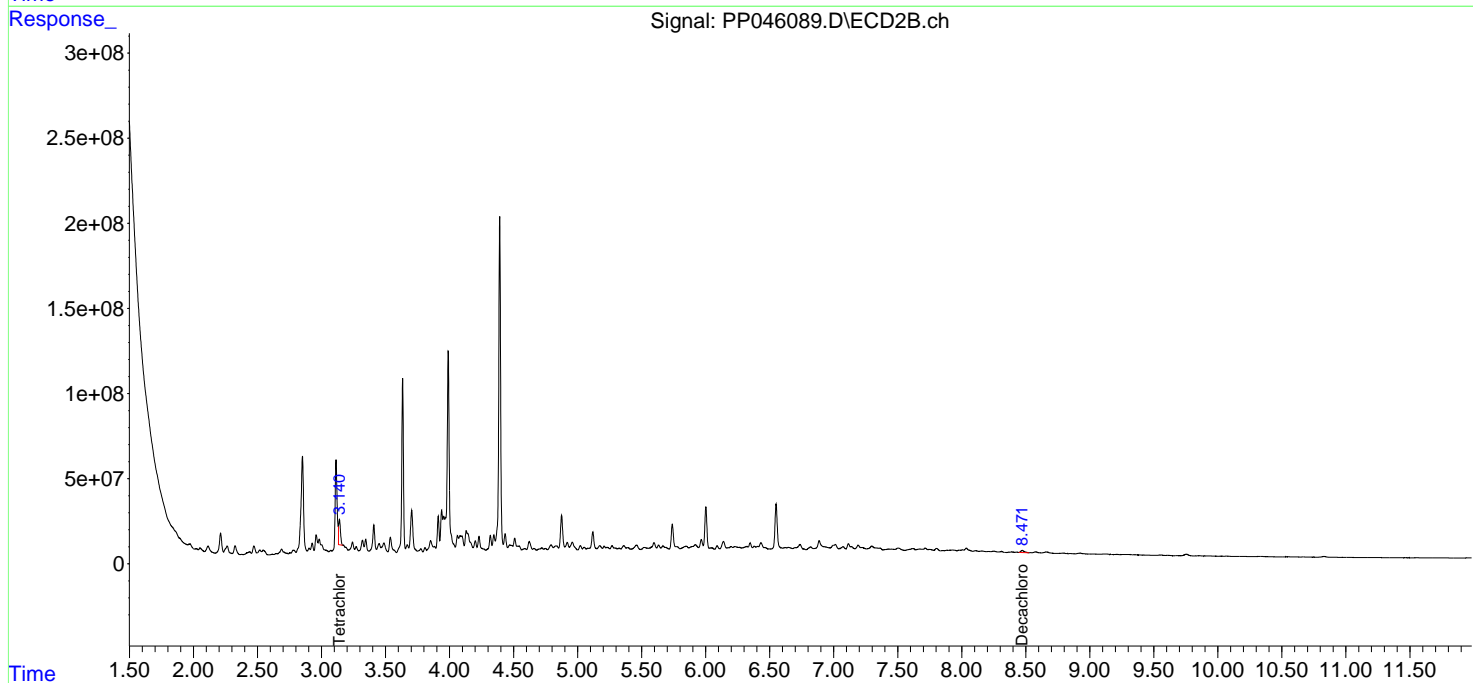
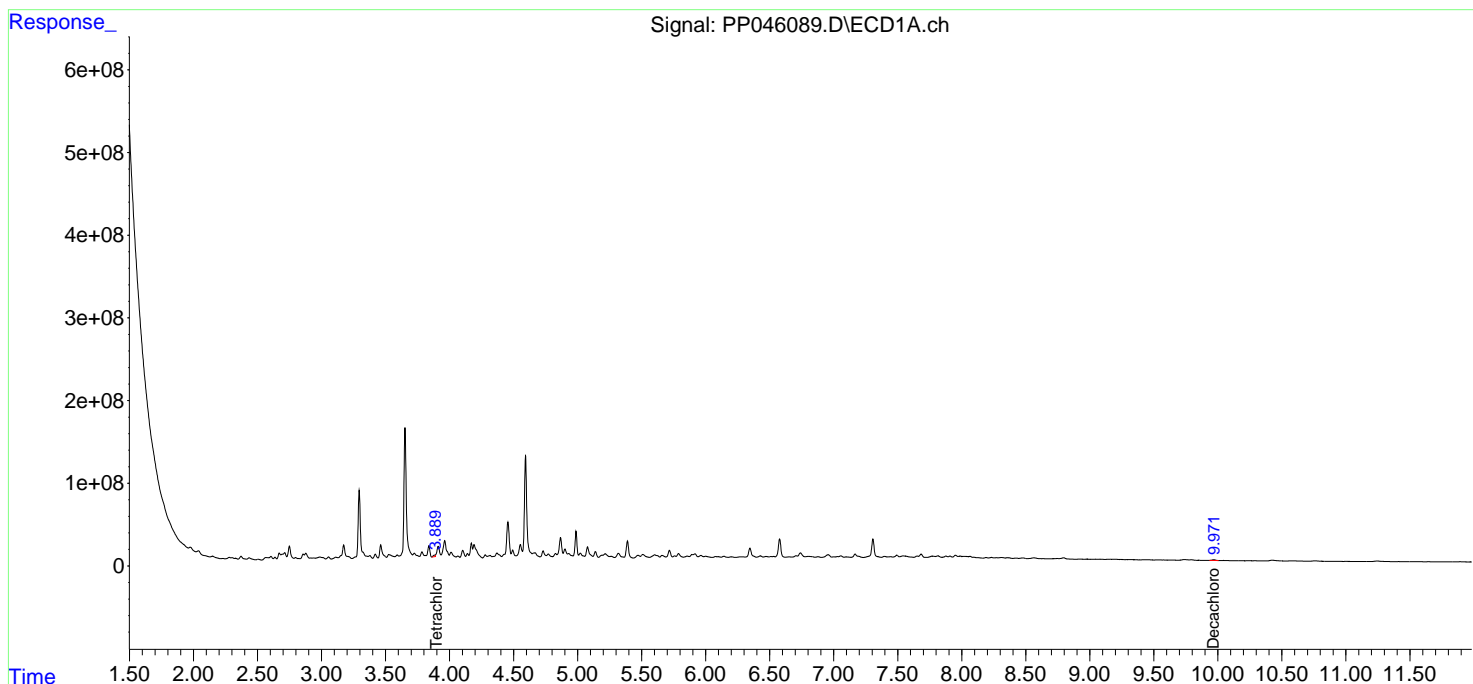
Data Path : Z:\pestpcbsrv\HPCHEM1\ECD_P\Data\PP041522\
 Data File : PP046089.D
 Signal(s) : Signal #1: ECD1A.ch Signal #2: ECD2B.ch
 Acq On : 15 Apr 2022 04:32
 Operator : YP\AJ
 Sample : N2389-07
 Misc :
 ALS Vial : 61 Sample Multiplier: 1

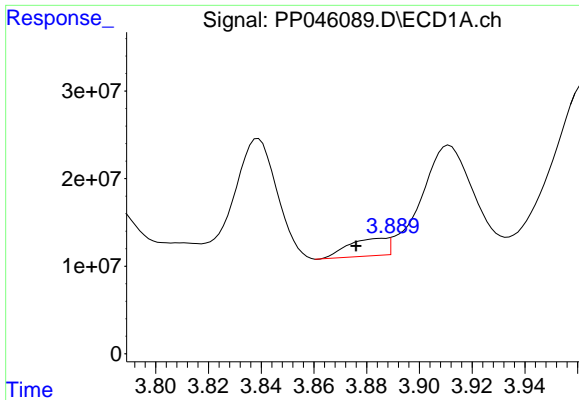
Instrument :
 ECD_P
ClientSampleID :
 33637-8

Manual Integrations
APPROVED
 Reviewed By :Yogesh Patel 04/15/2022
 Supervised By :mohammad ahmed 04/15/2022

Integration File signal 1: autoint1.e
 Integration File signal 2: autoint2.e
 Quant Time: Apr 15 05:52:07 2022
 Quant Method : Z:\pestpcbsrv\HPCHEM1\ECD_P\methods\PP041222.M
 Quant Title : GC EXTRACTABLES
 QLast Update : Tue Apr 12 05:31:12 2022
 Response via : Initial Calibration
 Integrator: ChemStation

Volume Inj. : 2 µl
 Signal #1 Phase : ZB-MR1 Signal #2 Phase: ZB-MR2
 Signal #1 Info : 30Mx0.32mmx 0.50µ Signal #2 Info : 30M x 0.32mm x 0.25µm

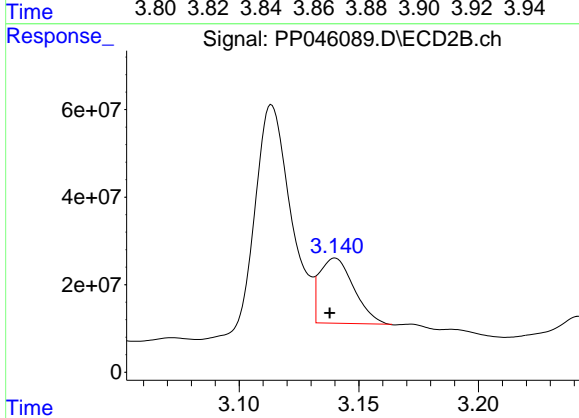




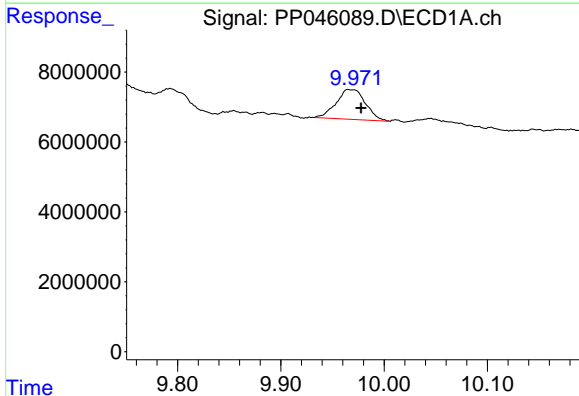
#1 Tetrachloro-m-xylene
 R.T.: 3.889 min
 Delta R.T.: 0.013 min
 Response: 23140968
 Conc: 9.41 ng/ml

Instrument : ECD_P
 Client Sample Id : 33637-8

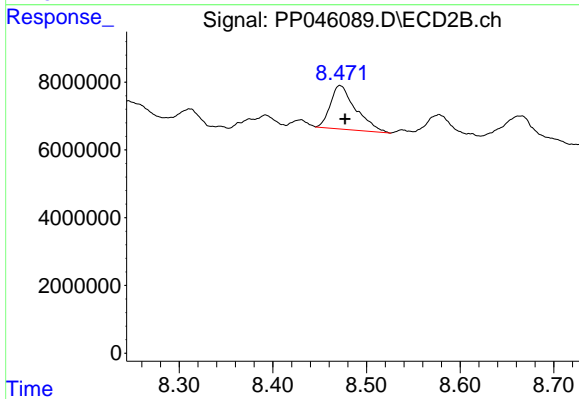
Manual Integrations
APPROVED
 Reviewed By :Yogesh Patel 04/15/2022
 Supervised By :mohammad ahmed 04/15/2022



#1 Tetrachloro-m-xylene
 R.T.: 3.140 min
 Delta R.T.: 0.002 min
 Response: 145673528
 Conc: 91.68 ng/ml m



#2 Decachlorobiphenyl
 R.T.: 9.966 min
 Delta R.T.: -0.012 min
 Response: 16742932
 Conc: 10.20 ng/ml



#2 Decachlorobiphenyl
 R.T.: 8.471 min
 Delta R.T.: -0.006 min
 Response: 24169747
 Conc: 16.96 ng/ml m