

Data Path : Z:\pestpcbsrv\HPCHEM1\ECD\_P\Data\PP041524\  
 Data File : PP064340.D  
 Signal(s) : Signal #1: ECD1A.ch Signal #2: ECD2B.ch  
 Acq On : 15 Apr 2024 20:57  
 Operator : YP\AJ  
 Sample : P2112-03 10X  
 Misc :  
 ALS Vial : 31 Sample Multiplier: 1

Instrument :  
 ECD\_P  
 ClientSampleId :  
 BC274767-1-1

Integration File signal 1: autoint1.e  
 Integration File signal 2: autoint2.e  
 Quant Time: Apr 16 01:29:30 2024  
 Quant Method : Z:\pestpcbsrv\HPCHEM1\ECD\_P\methods\PP031924.M  
 Quant Title : GC EXTRACTABLES  
 QLast Update : Tue Mar 19 06:23:02 2024  
 Response via : Initial Calibration  
 Integrator: ChemStation

Volume Inj. : 2 µl  
 Signal #1 Phase : ZB-MR1 Signal #2 Phase: ZB-MR2  
 Signal #1 Info : 30Mx0.32mmx 0.50µ Signal #2 Info : 30M x 0.32mm x 0.25µm

Compound	RT#1	RT#2	Resp#1	Resp#2	ng/ml	ng/ml
-----						
System Monitoring Compounds						
1) SA Tetrachlo...	4.486	3.638	3538691	3643092	1.483	1.526
2) SA Decachlor...	10.354	8.666	4487646	3753188	1.767	1.389
Target Compounds						
5) L1 AR-1016-3	0.000	4.938	0	1793410	N.D.	28.814 #
7) L1 AR-1016-5	0.000	5.209f	0	599653	N.D.	8.626 #
13) L3 AR-1232-3	0.000	4.938	0	1793410	N.D.	64.661 #
14) L3 AR-1232-4	0.000	5.027	0	552929	N.D.	20.155 #
15) L3 AR-1232-5	0.000	5.209f	0	599653	N.D.	20.322 #
18) L4 AR-1242-3	0.000	4.938	0	1793410	N.D.	39.958 #
19) L4 AR-1242-4	0.000	5.027	0	552929	N.D.	11.140 #
23) L5 AR-1248-3	0.000	5.027	0	552929	N.D.	7.472 #
24) L5 AR-1248-4	0.000	5.209f	0	599653	N.D.	6.925 #
31) L7 AR-1260-1	0.000	6.213	0	885707	N.D.	6.198 #
32) L7 AR-1260-2	0.000	6.424	0	1780937	N.D.	10.535 #
34) L7 AR-1260-4	0.000	7.079f	0	458893	N.D.	3.765 #
35) L7 AR-1260-5	0.000	7.273	0	512864	N.D.	1.922 #
39) L8 AR-1262-4	0.000	7.623	0	382326	N.D.	1.789 #
42) L9 AR-1268-2	0.000	7.623	0	382326	N.D.	1.112 #
-----						

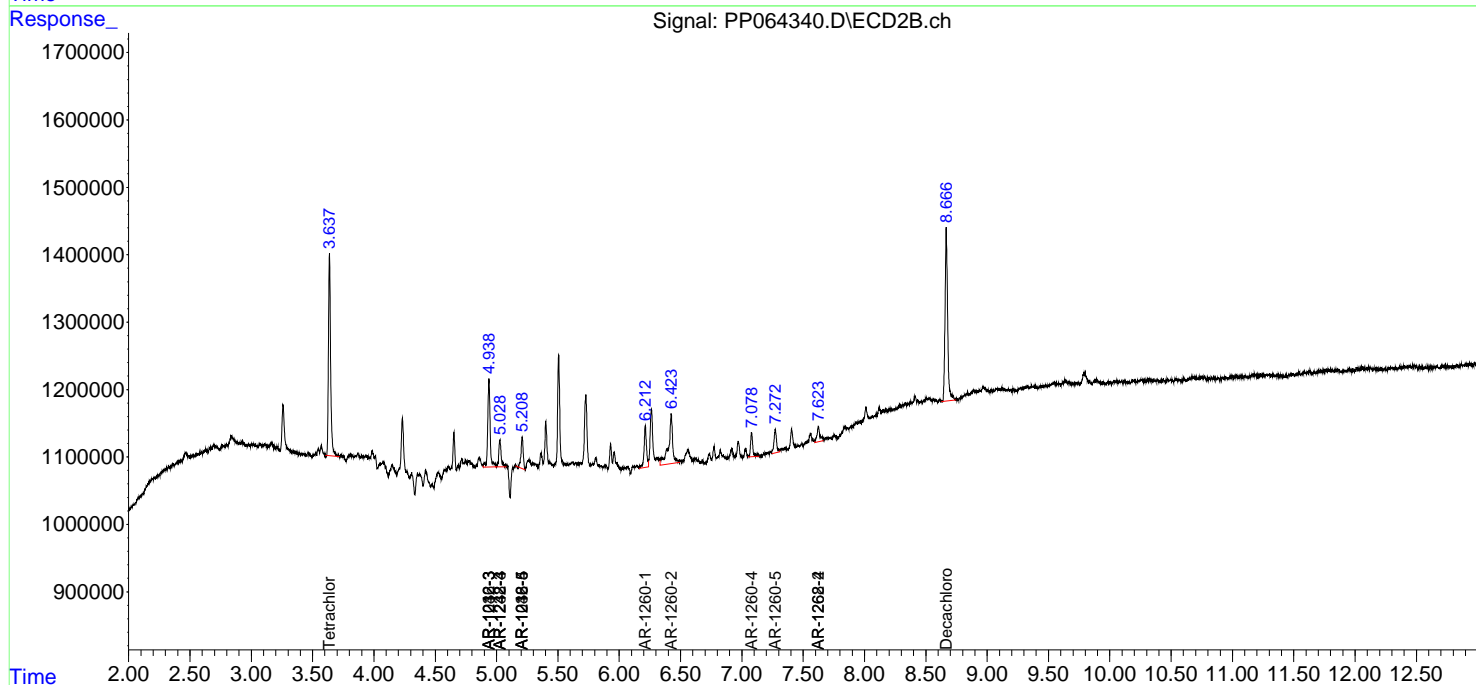
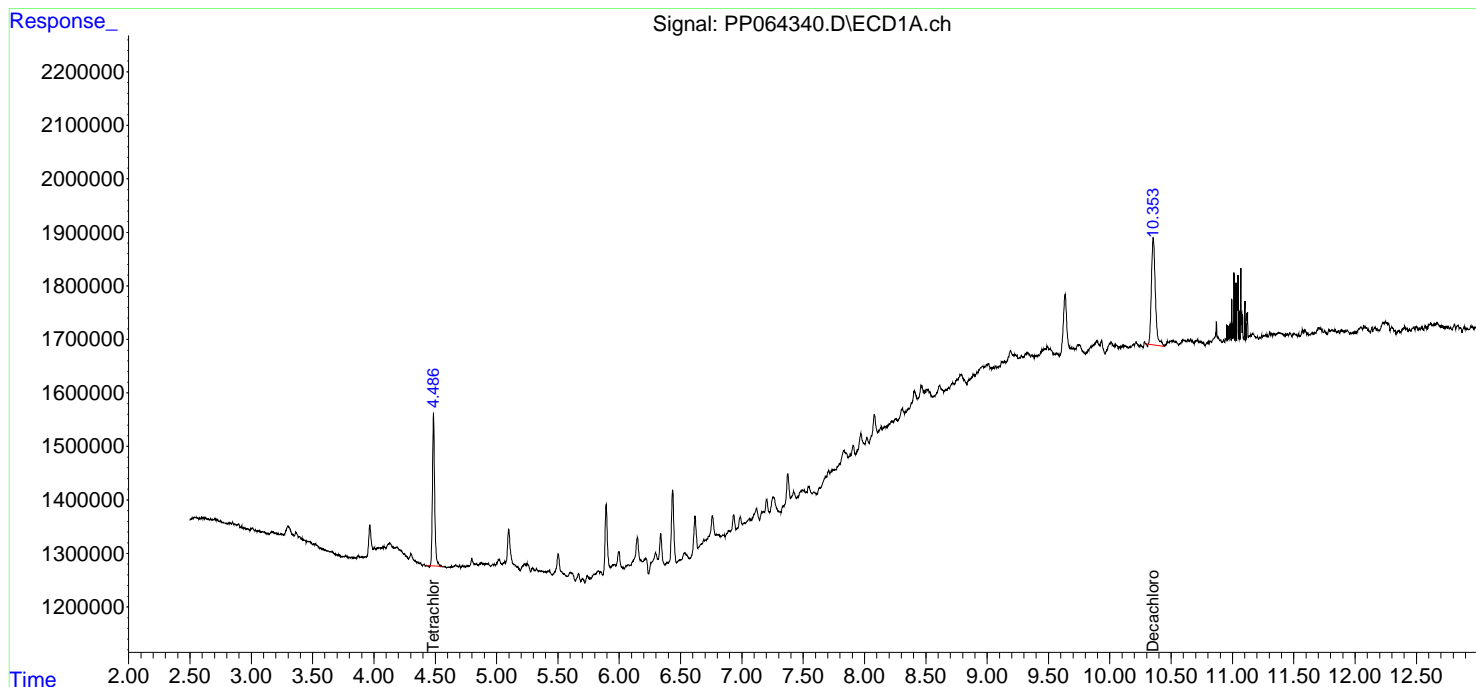
(f)=RT Delta > 1/2 Window (#)=Amounts differ by > 25% (m)=manual int.

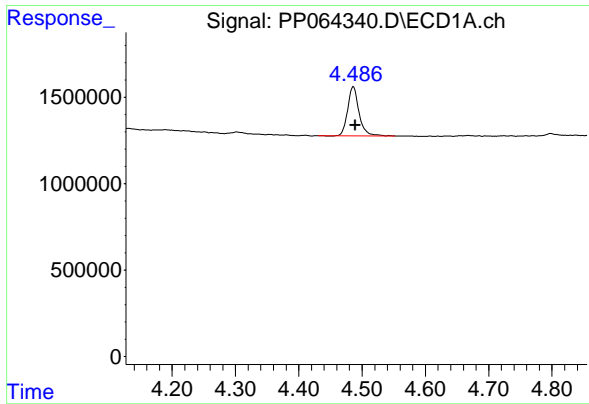
Data Path : Z:\pestpcbsrv\HPCHEM1\ECD\_P\Data\PP041524\  
 Data File : PP064340.D  
 Signal(s) : Signal #1: ECD1A.ch Signal #2: ECD2B.ch  
 Acq On : 15 Apr 2024 20:57  
 Operator : YP\AJ  
 Sample : P2112-03 10X  
 Misc :  
 ALS Vial : 31 Sample Multiplier: 1

Instrument :  
 ECD\_P  
 ClientSampleId :  
 BC274767-1-1

Integration File signal 1: autoint1.e  
 Integration File signal 2: autoint2.e  
 Quant Time: Apr 16 01:29:30 2024  
 Quant Method : Z:\pestpcbsrv\HPCHEM1\ECD\_P\methods\PP031924.M  
 Quant Title : GC EXTRACTABLES  
 QLast Update : Tue Mar 19 06:23:02 2024  
 Response via : Initial Calibration  
 Integrator: ChemStation

Volume Inj. : 2 µl  
 Signal #1 Phase : ZB-MR1 Signal #2 Phase: ZB-MR2  
 Signal #1 Info : 30Mx0.32mmx 0.50µm Signal #2 Info : 30M x 0.32mm x 0.25µm

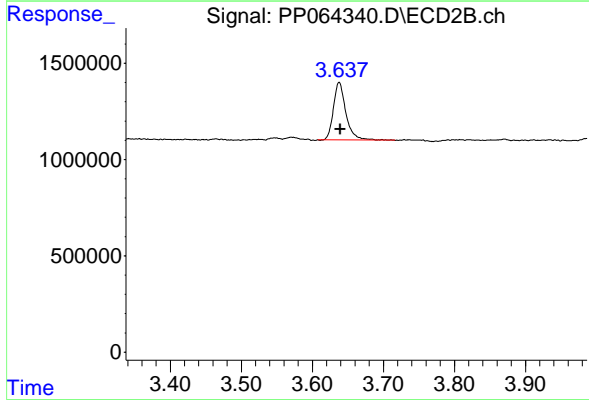




#1 Tetrachloro-m-xylene

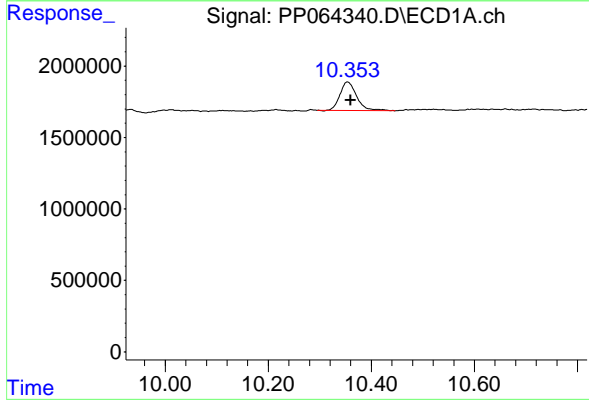
R.T.: 4.486 min  
 Delta R.T.: -0.003 min  
 Response: 3538691  
 Conc: 1.48 ng/ml

Instrument :  
 ECD\_P  
 ClientSampleId :  
 BC274767-1-1



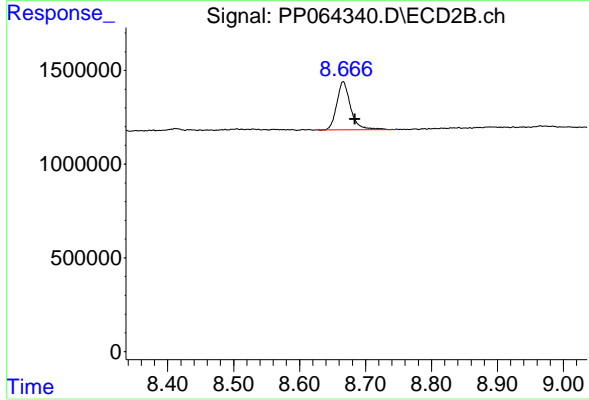
#1 Tetrachloro-m-xylene

R.T.: 3.638 min  
 Delta R.T.: -0.002 min  
 Response: 3643092  
 Conc: 1.53 ng/ml



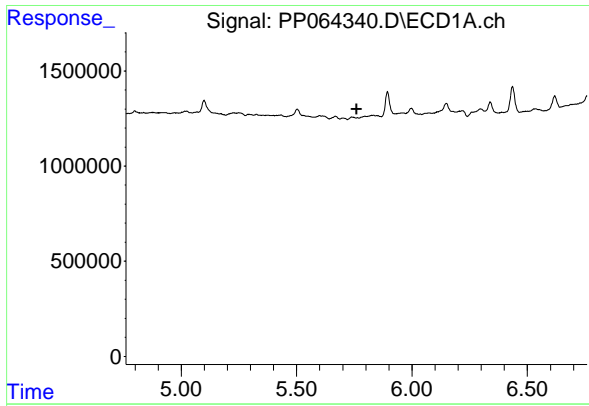
#2 Decachlorobiphenyl

R.T.: 10.354 min  
 Delta R.T.: -0.006 min  
 Response: 4487646  
 Conc: 1.77 ng/ml



#2 Decachlorobiphenyl

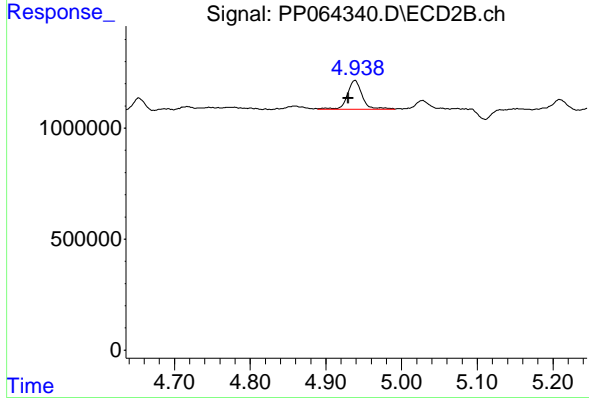
R.T.: 8.666 min  
 Delta R.T.: -0.018 min  
 Response: 3753188  
 Conc: 1.39 ng/ml



#5 AR-1016-3

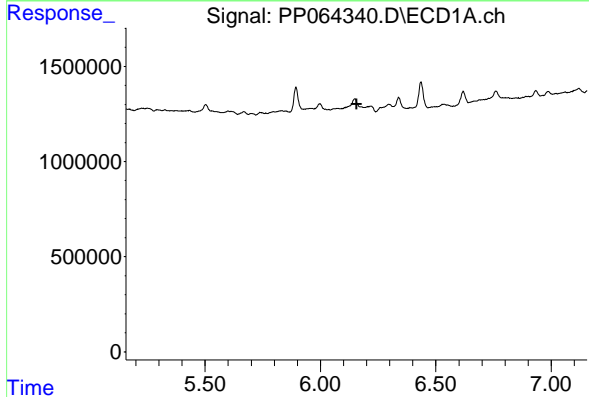
R.T.: 0.000 min  
 Exp R.T.: 5.759 min  
 Response: 0  
 Conc: N.D.

Instrument :  
 ECD\_P  
 ClientSampleId :  
 BC274767-1-1



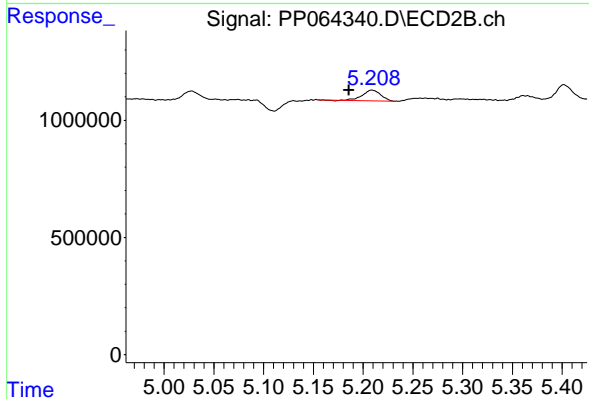
#5 AR-1016-3

R.T.: 4.938 min  
 Delta R.T.: 0.009 min  
 Response: 1793410  
 Conc: 28.81 ng/ml



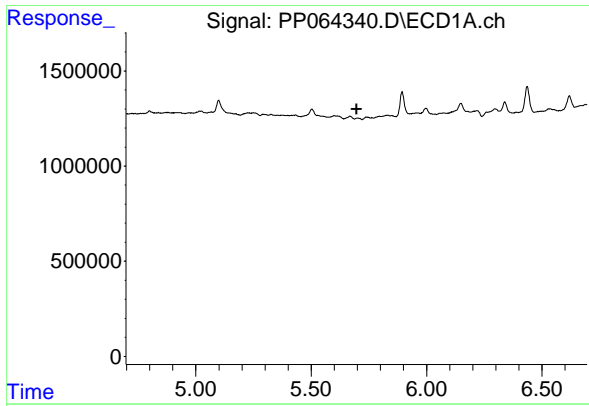
#7 AR-1016-5

R.T.: 0.000 min  
 Exp R.T.: 6.157 min  
 Response: 0  
 Conc: N.D.



#7 AR-1016-5

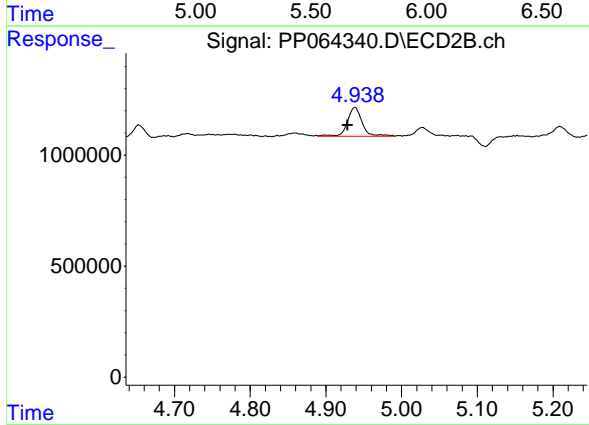
R.T.: 5.209 min  
 Delta R.T.: 0.023 min  
 Response: 599653  
 Conc: 8.63 ng/ml



#13 AR-1232-3

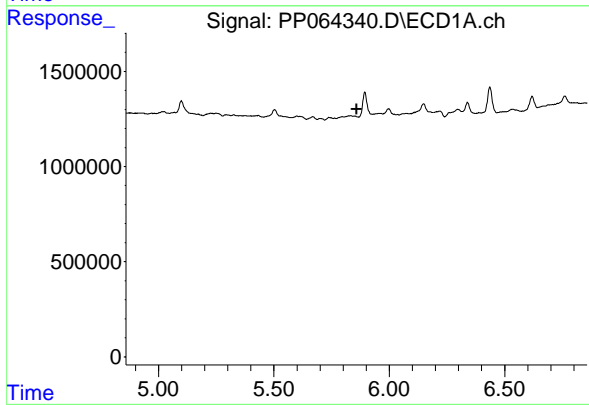
R.T.: 0.000 min  
 Exp R.T.: 5.696 min  
 Response: 0  
 Conc: N.D.

Instrument :  
 ECD\_P  
 ClientSampleId :  
 BC274767-1-1



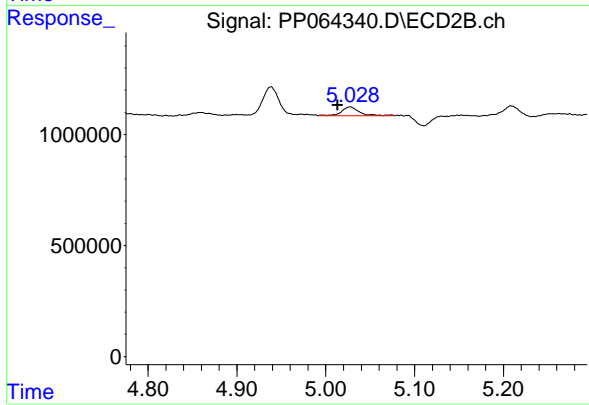
#13 AR-1232-3

R.T.: 4.938 min  
 Delta R.T.: 0.010 min  
 Response: 1793410  
 Conc: 64.66 ng/ml



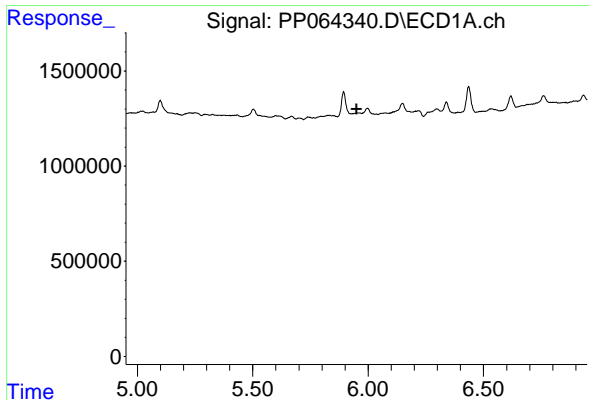
#14 AR-1232-4

R.T.: 0.000 min  
 Exp R.T.: 5.858 min  
 Response: 0  
 Conc: N.D.



#14 AR-1232-4

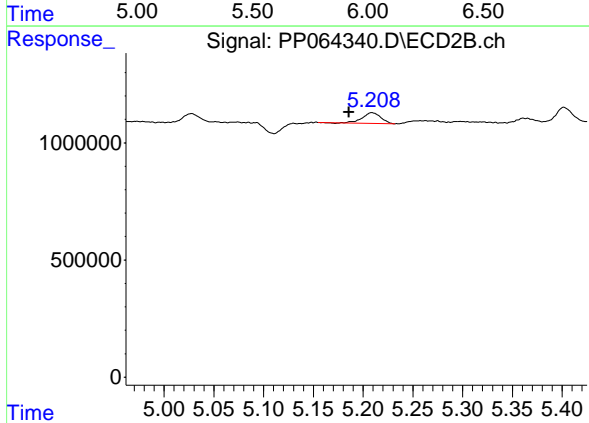
R.T.: 5.027 min  
 Delta R.T.: 0.014 min  
 Response: 552929  
 Conc: 20.16 ng/ml



#15 AR-1232-5

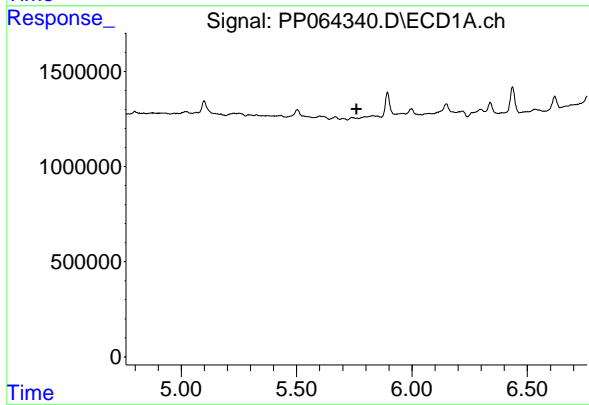
R.T.: 0.000 min  
 Exp R.T.: 5.950 min  
 Response: 0  
 Conc: N.D.

Instrument :  
 ECD\_P  
 ClientSampleId :  
 BC274767-1-1



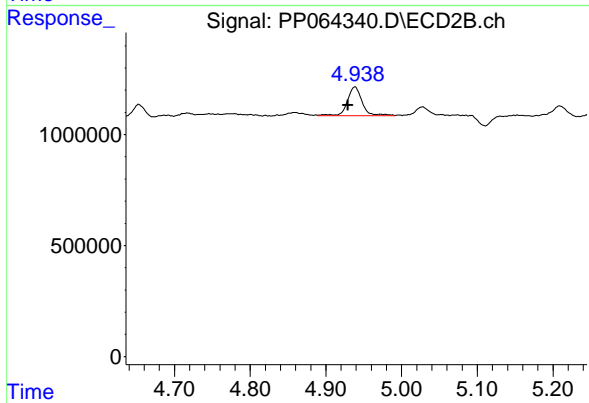
#15 AR-1232-5

R.T.: 5.209 min  
 Delta R.T.: 0.023 min  
 Response: 599653  
 Conc: 20.32 ng/ml



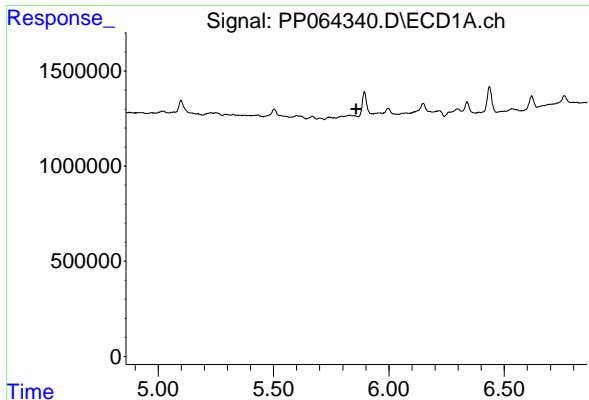
#18 AR-1242-3

R.T.: 0.000 min  
 Exp R.T.: 5.760 min  
 Response: 0  
 Conc: N.D.



#18 AR-1242-3

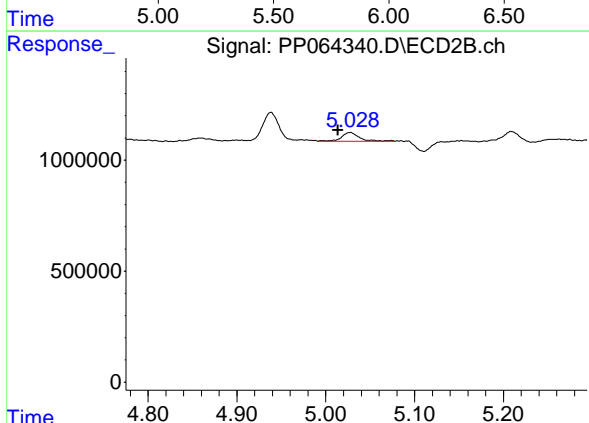
R.T.: 4.938 min  
 Delta R.T.: 0.009 min  
 Response: 1793410  
 Conc: 39.96 ng/ml



#19 AR-1242-4

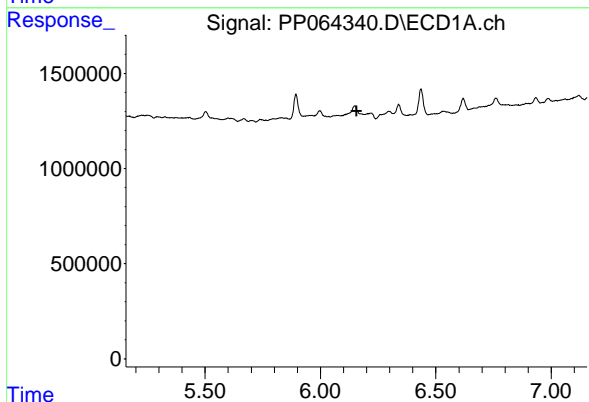
R.T.: 0.000 min  
 Exp R.T.: 5.859 min  
 Response: 0  
 Conc: N.D.

Instrument :  
 ECD\_P  
 ClientSampleId :  
 BC274767-1-1



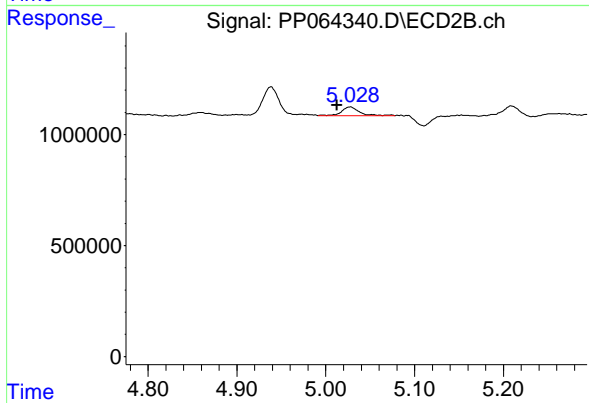
#19 AR-1242-4

R.T.: 5.027 min  
 Delta R.T.: 0.014 min  
 Response: 552929  
 Conc: 11.14 ng/ml



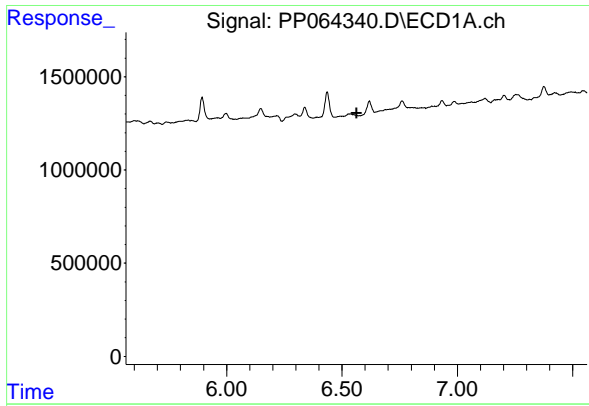
#23 AR-1248-3

R.T.: 0.000 min  
 Exp R.T.: 6.156 min  
 Response: 0  
 Conc: N.D.



#23 AR-1248-3

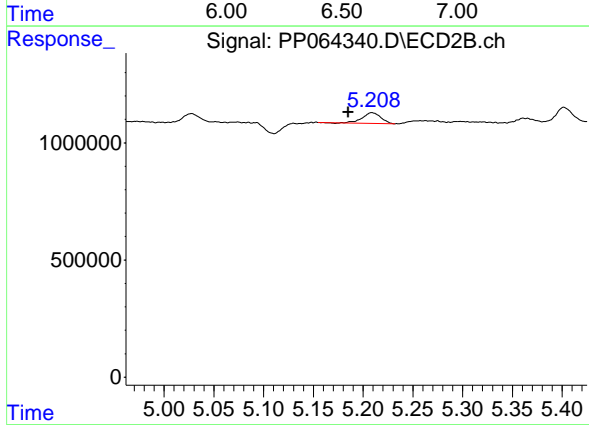
R.T.: 5.027 min  
 Delta R.T.: 0.015 min  
 Response: 552929  
 Conc: 7.47 ng/ml



#24 AR-1248-4

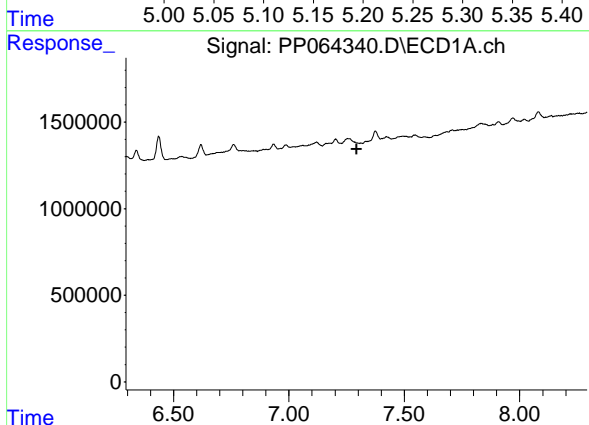
R.T.: 0.000 min  
 Exp R.T.: 6.563 min  
 Response: 0  
 Conc: N.D.

Instrument :  
 ECD\_P  
 ClientSampleId :  
 BC274767-1-1



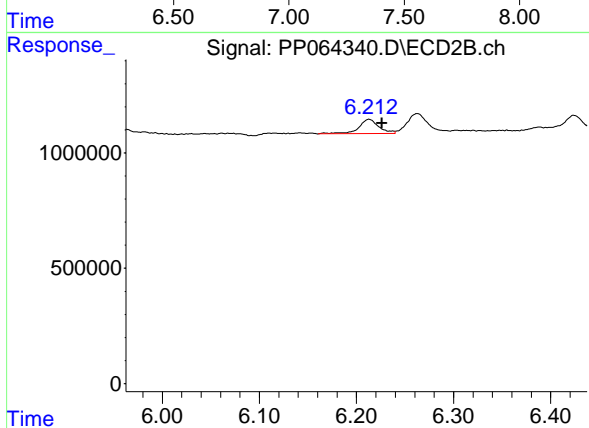
#24 AR-1248-4

R.T.: 5.209 min  
 Delta R.T.: 0.024 min  
 Response: 599653  
 Conc: 6.93 ng/ml



#31 AR-1260-1

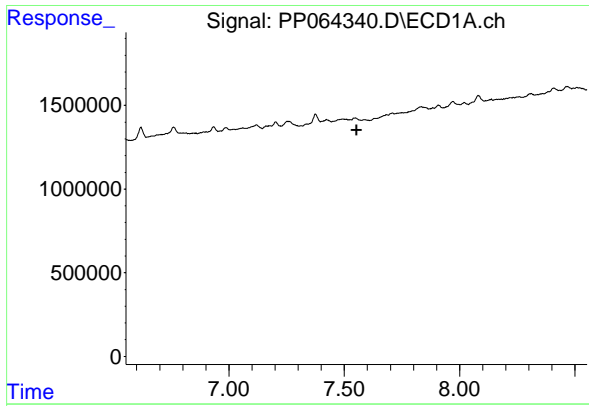
R.T.: 0.000 min  
 Exp R.T.: 7.293 min  
 Response: 0  
 Conc: N.D.



#31 AR-1260-1

R.T.: 6.213 min  
 Delta R.T.: -0.013 min  
 Response: 885707  
 Conc: 6.20 ng/ml

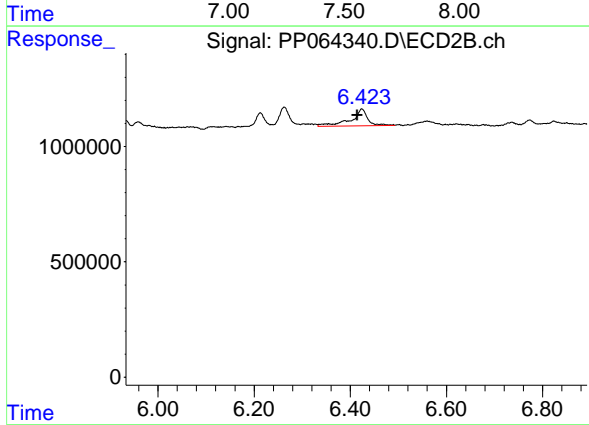




#32 AR-1260-2

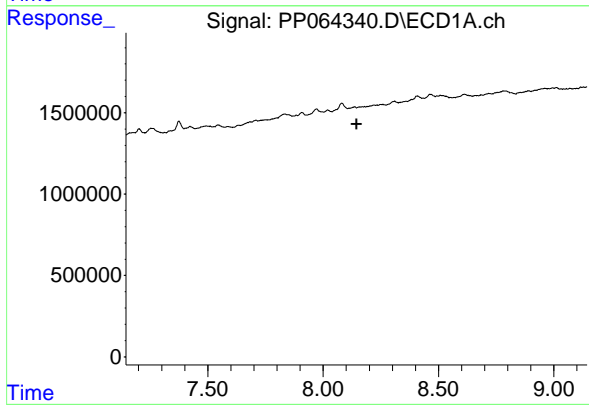
R.T.: 0.000 min  
 Exp R.T.: 7.552 min  
 Response: 0  
 Conc: N.D.

Instrument :  
 ECD\_P  
 ClientSampleId :  
 BC274767-1-1



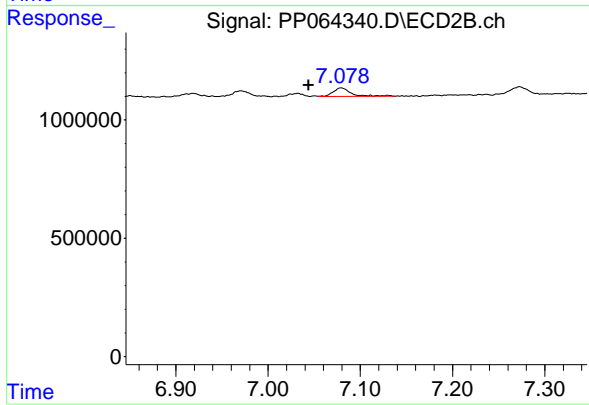
#32 AR-1260-2

R.T.: 6.424 min  
 Delta R.T.: 0.009 min  
 Response: 1780937  
 Conc: 10.54 ng/ml



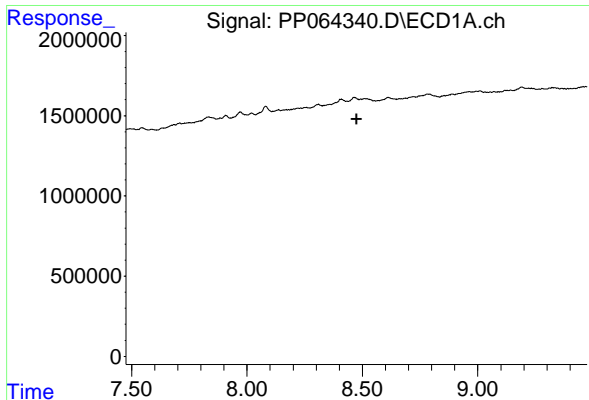
#34 AR-1260-4

R.T.: 0.000 min  
 Exp R.T.: 8.144 min  
 Response: 0  
 Conc: N.D.



#34 AR-1260-4

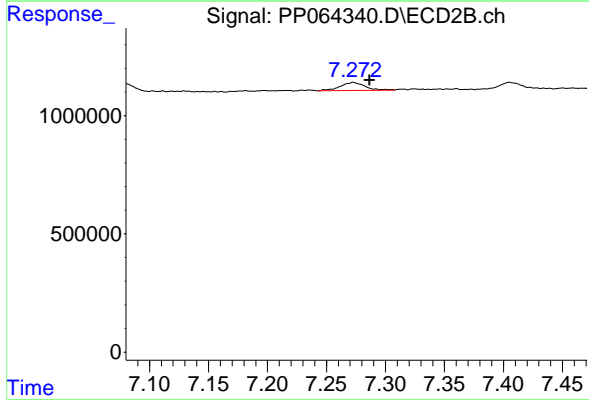
R.T.: 7.079 min  
 Delta R.T.: 0.035 min  
 Response: 458893  
 Conc: 3.76 ng/ml



#35 AR-1260-5

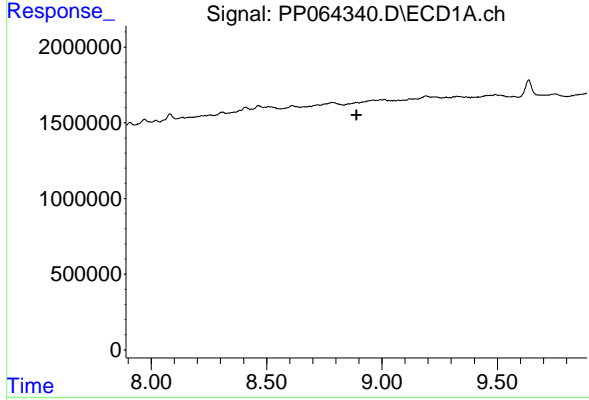
R.T.: 0.000 min  
 Exp R.T.: 8.474 min  
 Response: 0  
 Conc: N.D.

Instrument : ECD\_P  
 ClientSampleId : BC274767-1-1



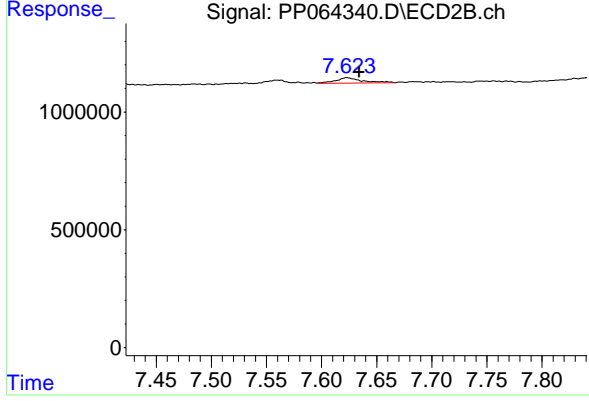
#35 AR-1260-5

R.T.: 7.273 min  
 Delta R.T.: -0.014 min  
 Response: 512864  
 Conc: 1.92 ng/ml



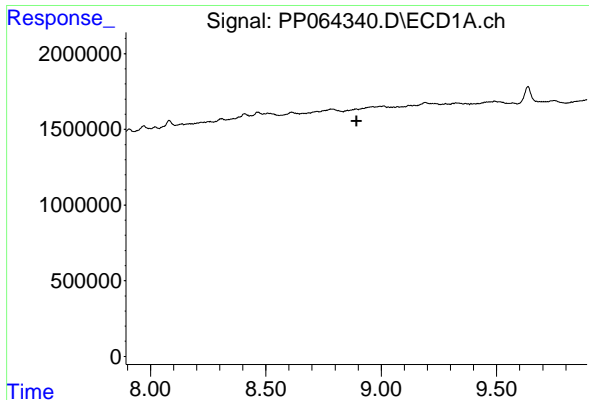
#39 AR-1262-4

R.T.: 0.000 min  
 Exp R.T.: 8.889 min  
 Response: 0  
 Conc: N.D.



#39 AR-1262-4

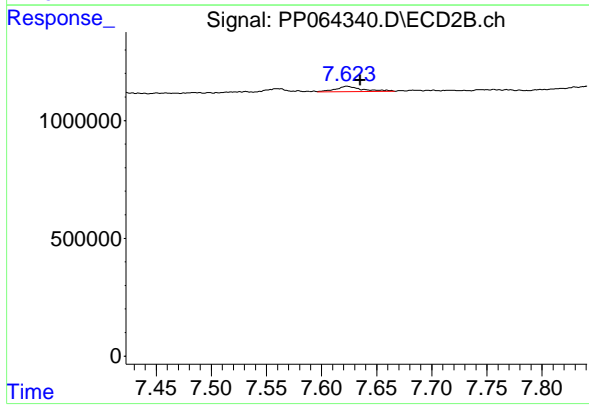
R.T.: 7.623 min  
 Delta R.T.: -0.011 min  
 Response: 382326  
 Conc: 1.79 ng/ml



#42 AR-1268-2

R.T.: 0.000 min  
 Exp R.T.: 8.893 min  
 Response: 0  
 Conc: N.D.

Instrument :  
 ECD\_P  
 ClientSampleId :  
 BC274767-1-1



#42 AR-1268-2

R.T.: 7.623 min  
 Delta R.T.: -0.012 min  
 Response: 382326  
 Conc: 1.11 ng/ml