

Data Path : Z:\pestpcbsrv\HPCHEM1\ECD\_P\Data\PP041822\  
 Data File : PP046266.D  
 Signal(s) : Signal #1: ECD1A.ch Signal #2: ECD2B.ch  
 Acq On : 19 Apr 2022 02:01  
 Operator : YP\AJ  
 Sample : AR1254CCC500  
 Misc :  
 ALS Vial : 6 Sample Multiplier: 1

Instrument :  
 ECD\_P  
 ClientSampleId :  
 AR1254CCC500

Integration File signal 1: autoint1.e  
 Integration File signal 2: autoint2.e  
 Quant Time: Apr 19 05:03:11 2022  
 Quant Method : Z:\pestpcbsrv\HPCHEM1\ECD\_P\methods\PP041222.M  
 Quant Title : GC EXTRACTABLES  
 QLast Update : Tue Apr 12 05:31:12 2022  
 Response via : Initial Calibration  
 Integrator: ChemStation

Volume Inj. : 2 µl  
 Signal #1 Phase : ZB-MR1 Signal #2 Phase: ZB-MR2  
 Signal #1 Info : 30Mx0.32mmx 0.50µ Signal #2 Info : 30M x 0.32mm x 0.25µm

Compound	RT#1	RT#2	Resp#1	Resp#2	ng/ml	ng/ml
-----						
System Monitoring Compounds						
1) SA Tetrachlo...	3.870	3.134	128.9E6	88489824	52.387	55.690
2) SA Decachlor...	9.964	8.464	77386143	75857054	47.142	53.221
Target Compounds						
26) L6 AR-1254-1	6.039	5.117	34360409	47276949	415.739	535.967 #
27) L6 AR-1254-2	6.278	5.276	57963835	39312741	470.693	520.891
28) L6 AR-1254-3	6.677	5.706	57798479	61943928	480.827	526.688
29) L6 AR-1254-4	6.990	5.955	43273233	40760719	490.648	540.127
30) L6 AR-1254-5	7.450	6.404	43096119	56754725	460.048	553.962
-----						

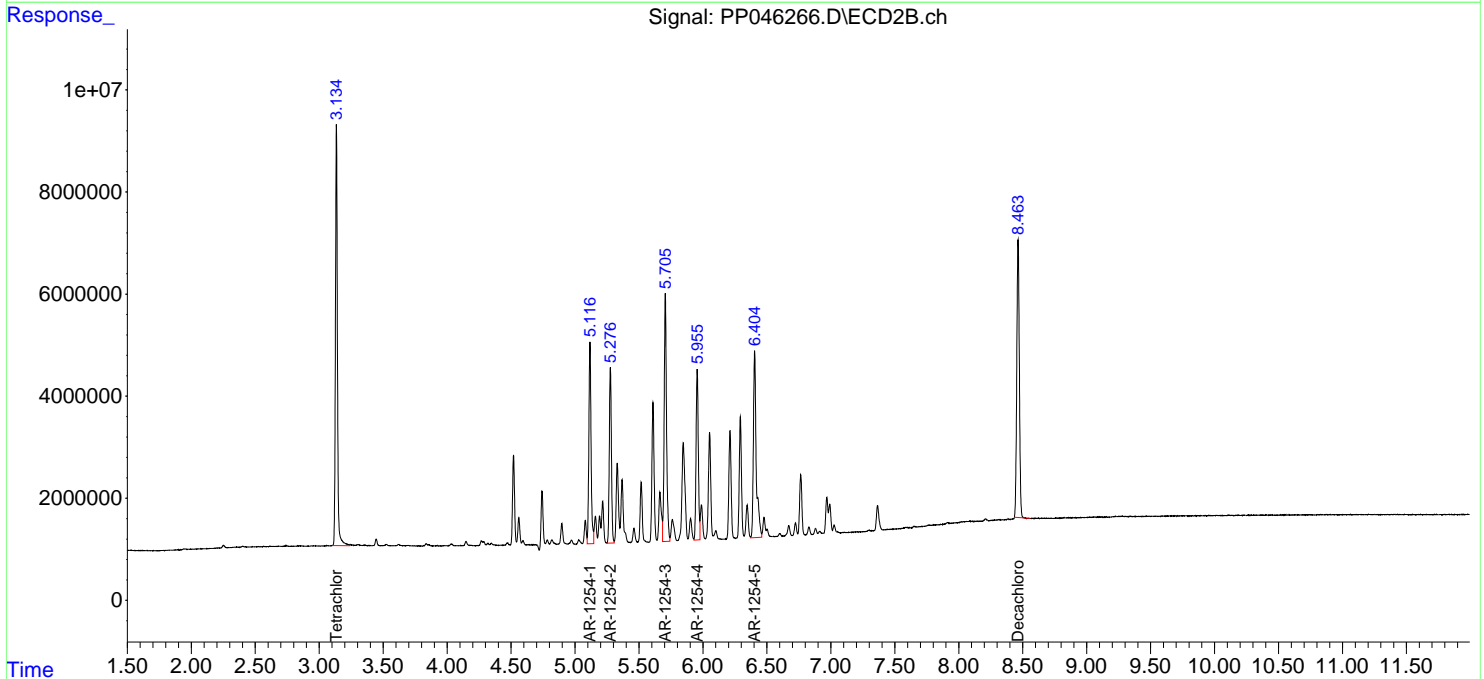
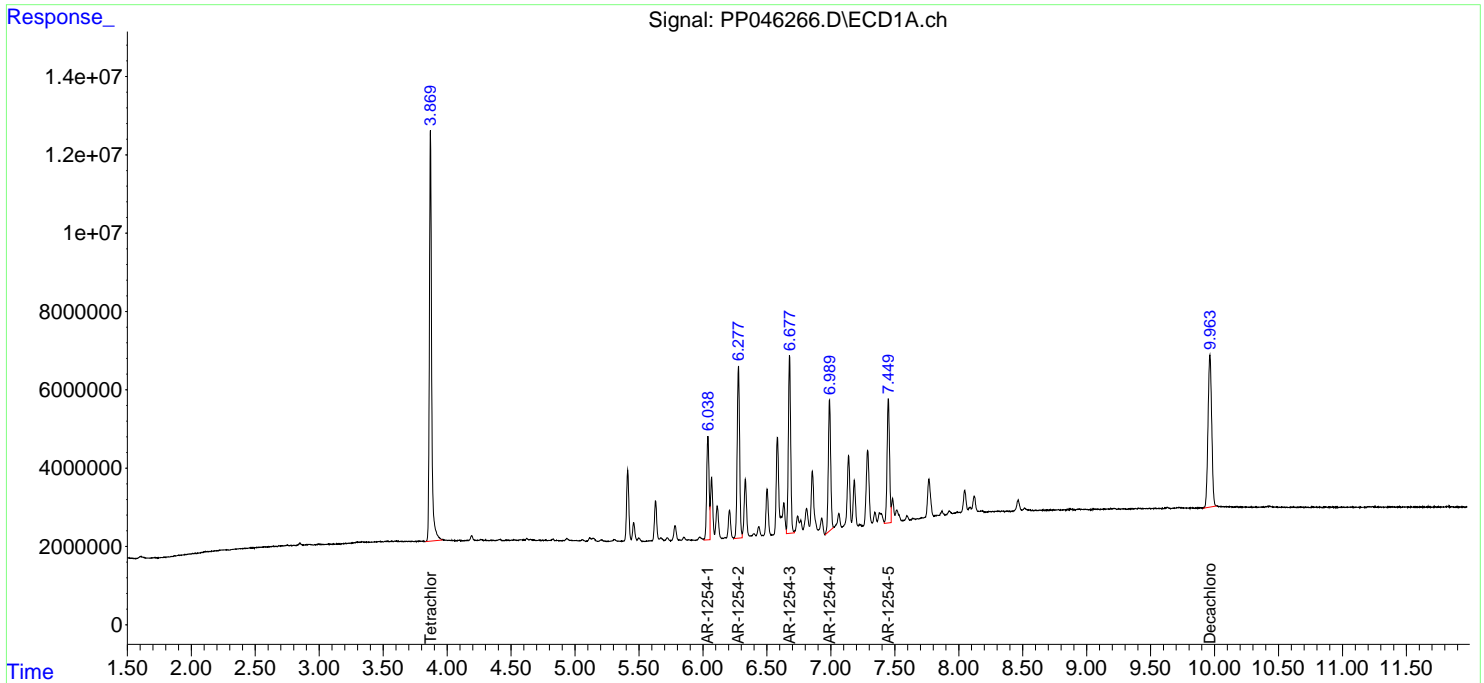
(f)=RT Delta > 1/2 Window (#)=Amounts differ by > 25% (m)=manual int.

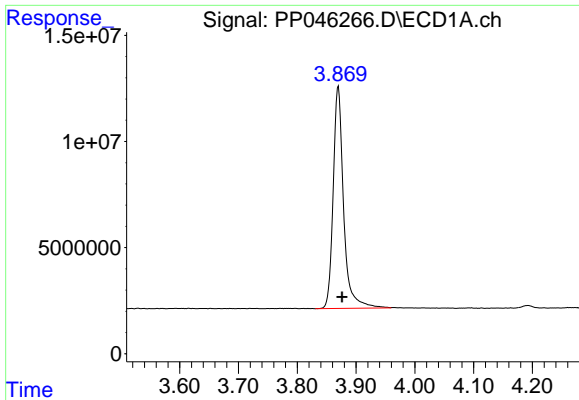
Data Path : Z:\pestpcbsrv\HPCHEM1\ECD\_P\Data\PP041822\  
 Data File : PP046266.D  
 Signal(s) : Signal #1: ECD1A.ch Signal #2: ECD2B.ch  
 Acq On : 19 Apr 2022 02:01  
 Operator : YP\AJ  
 Sample : AR1254CCC500  
 Misc :  
 ALS Vial : 6 Sample Multiplier: 1

Instrument :  
 ECD\_P  
 ClientSampleId :  
 AR1254CCC500

Integration File signal 1: autoint1.e  
 Integration File signal 2: autoint2.e  
 Quant Time: Apr 19 05:03:11 2022  
 Quant Method : Z:\pestpcbsrv\HPCHEM1\ECD\_P\methods\PP041222.M  
 Quant Title : GC EXTRACTABLES  
 QLast Update : Tue Apr 12 05:31:12 2022  
 Response via : Initial Calibration  
 Integrator: ChemStation

Volume Inj. : 2 µl  
 Signal #1 Phase : ZB-MR1 Signal #2 Phase: ZB-MR2  
 Signal #1 Info : 30Mx0.32mmx 0.50µ Signal #2 Info : 30M x 0.32mm x 0.25µm

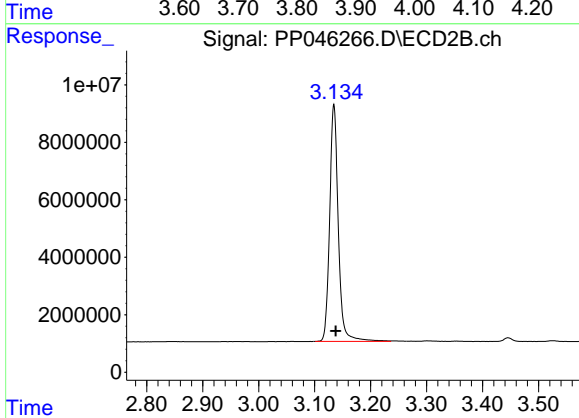




#1 Tetrachloro-m-xylene

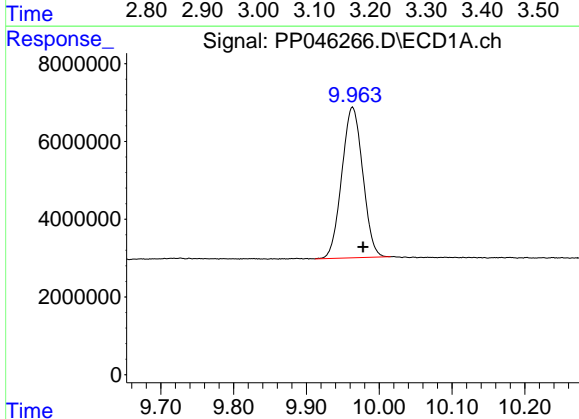
R.T.: 3.870 min  
 Delta R.T.: -0.006 min  
 Response: 128855850  
 Conc: 52.39 ng/ml

Instrument :  
 ECD\_P  
 ClientSampleId :  
 AR1254CCC500



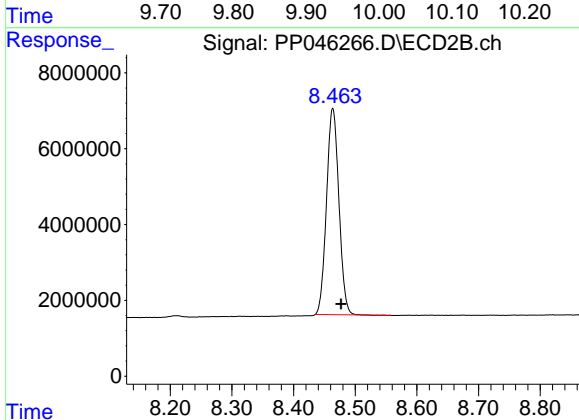
#1 Tetrachloro-m-xylene

R.T.: 3.134 min  
 Delta R.T.: -0.003 min  
 Response: 88489824  
 Conc: 55.69 ng/ml



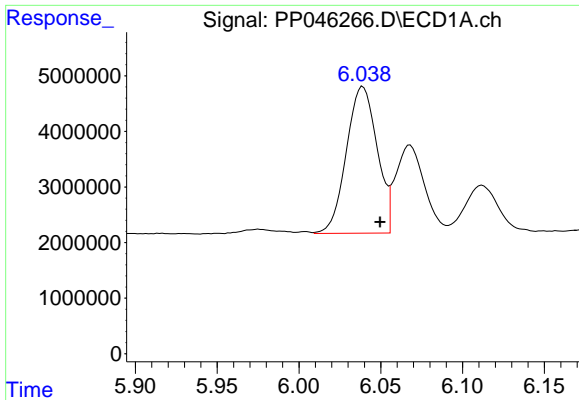
#2 Decachlorobiphenyl

R.T.: 9.964 min  
 Delta R.T.: -0.014 min  
 Response: 77386143  
 Conc: 47.14 ng/ml



#2 Decachlorobiphenyl

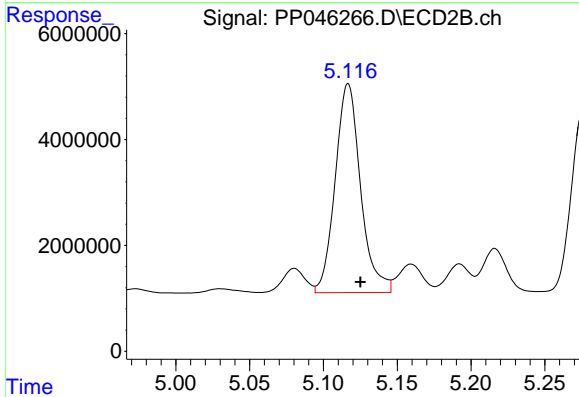
R.T.: 8.464 min  
 Delta R.T.: -0.013 min  
 Response: 75857054  
 Conc: 53.22 ng/ml



#26 AR-1254-1

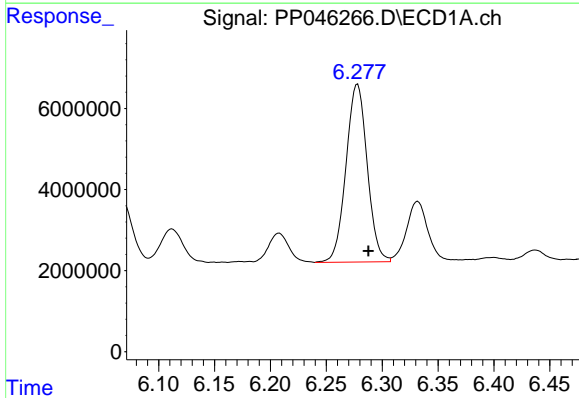
R.T.: 6.039 min  
 Delta R.T.: -0.011 min  
 Response: 34360409  
 Conc: 415.74 ng/ml

Instrument :  
 ECD\_P  
 ClientSampleId :  
 AR1254CCC500



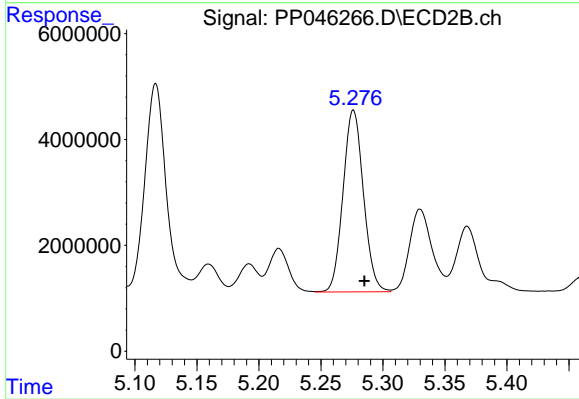
#26 AR-1254-1

R.T.: 5.117 min  
 Delta R.T.: -0.008 min  
 Response: 47276949  
 Conc: 535.97 ng/ml



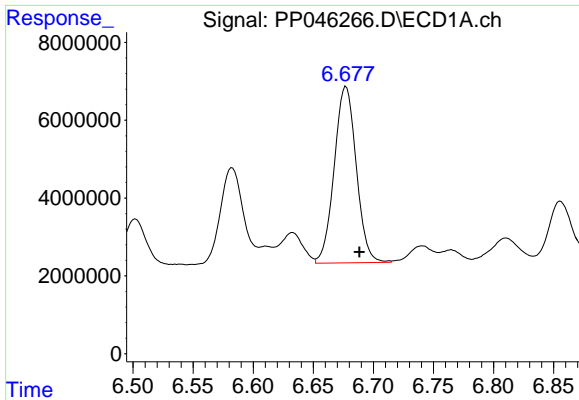
#27 AR-1254-2

R.T.: 6.278 min  
 Delta R.T.: -0.010 min  
 Response: 57963835  
 Conc: 470.69 ng/ml



#27 AR-1254-2

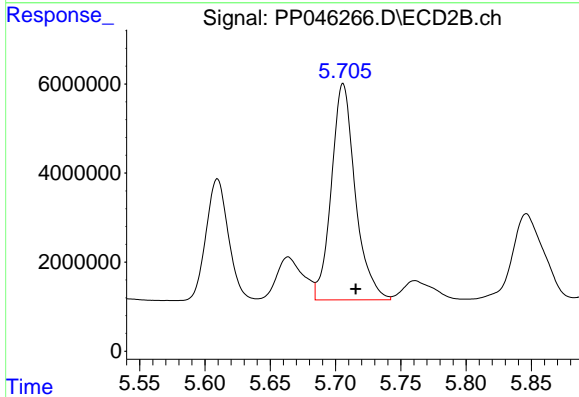
R.T.: 5.276 min  
 Delta R.T.: -0.009 min  
 Response: 39312741  
 Conc: 520.89 ng/ml



#28 AR-1254-3

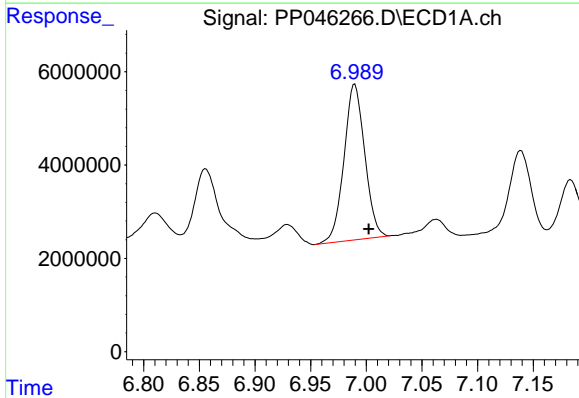
R.T.: 6.677 min  
 Delta R.T.: -0.011 min  
 Response: 57798479  
 Conc: 480.83 ng/ml

Instrument :  
 ECD\_P  
 ClientSampleId :  
 AR1254CCC500



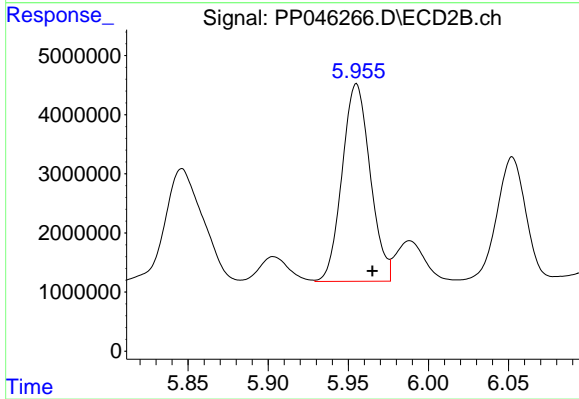
#28 AR-1254-3

R.T.: 5.706 min  
 Delta R.T.: -0.010 min  
 Response: 61943928  
 Conc: 526.69 ng/ml



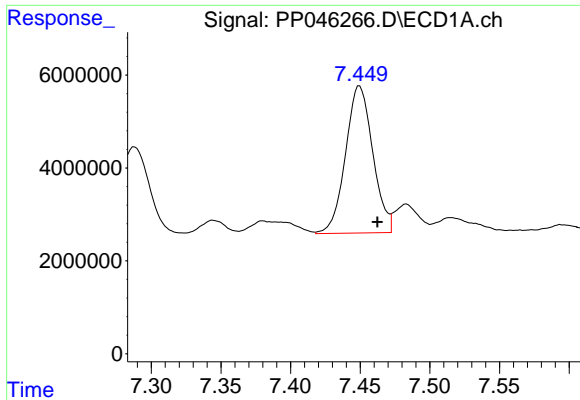
#29 AR-1254-4

R.T.: 6.990 min  
 Delta R.T.: -0.013 min  
 Response: 43273233  
 Conc: 490.65 ng/ml



#29 AR-1254-4

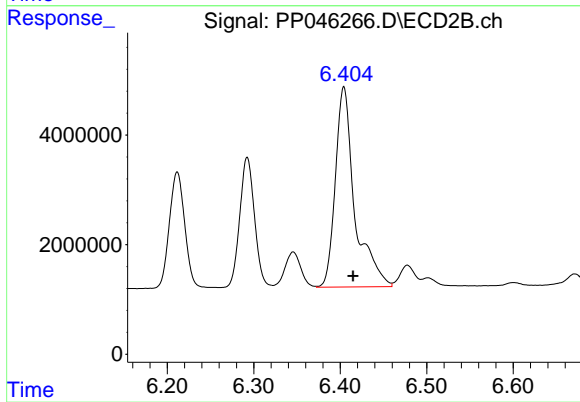
R.T.: 5.955 min  
 Delta R.T.: -0.010 min  
 Response: 40760719  
 Conc: 540.13 ng/ml



#30 AR-1254-5

R.T.: 7.450 min  
Delta R.T.: -0.013 min  
Response: 43096119  
Conc: 460.05 ng/ml

Instrument :  
ECD\_P  
ClientSampleId :  
AR1254CCC500



#30 AR-1254-5

R.T.: 6.404 min  
Delta R.T.: -0.011 min  
Response: 56754725  
Conc: 553.96 ng/ml