

Data Path : Z:\pestpcbsrv\HPCHEM1\ECD_P\Data\PP041823\
 Data File : PP056953.D
 Signal(s) : Signal #1: ECD1A.ch Signal #2: ECD2B.ch
 Acq On : 18 Apr 2023 13:17
 Operator : YP\AJ
 Sample : AR1660ICC250
 Misc :
 ALS Vial : 6 Sample Multiplier: 1

Instrument :
 ECD_P
 ClientSampleId :

Integration File signal 1: autoint1.e
 Integration File signal 2: autoint2.e
 Quant Time: Apr 18 13:47:22 2023
 Quant Method : Z:\pestpcbsrv\HPCHEM1\ECD_P\methods\PP041823.M
 Quant Title : GC EXTRACTABLES
 QLast Update : Tue Apr 18 13:41:22 2023
 Response via : Initial Calibration
 Integrator: ChemStation

Volume Inj. : 2 µl
 Signal #1 Phase : ZB-MR1 Signal #2 Phase: ZB-MR2
 Signal #1 Info : 30Mx0.32mmx 0.50µ Signal #2 Info : 30M x 0.32mm x 0.25µm

Compound	RT#1	RT#2	Resp#1	Resp#2	ng/ml	ng/ml

System Monitoring Compounds						
1) SA Tetrachlo...	4.403	3.629	60833863	45755432	25.051	25.373
2) SA Decachlor...	10.223	8.688	23609052	35687092	25.324	26.036
Target Compounds						
3) L1 AR-1016-1	5.580	4.728	15605699	14179189	264.445	264.719
4) L1 AR-1016-2	5.603	4.747	22206691	19580440	257.965	259.382
5) L1 AR-1016-3	5.666	4.925	14240342	10873280	263.481	262.283
6) L1 AR-1016-4	5.764	4.967	11315354	9657797	261.036	266.407
7) L1 AR-1016-5	6.061	5.183	11686704	12297585	262.274	265.528
31) L7 AR-1260-1	7.196	6.224	18584816	23876688	261.146	263.909
32) L7 AR-1260-2	7.453	6.412	18933878	26687199	262.196	262.226
33) L7 AR-1260-3	7.816	6.568	14149586	25382294	263.104	260.134
34) L7 AR-1260-4	8.042	7.042	15921564	20655269	258.679	263.648
35) L7 AR-1260-5	8.367	7.284	26857159	42221709	257.347	256.867

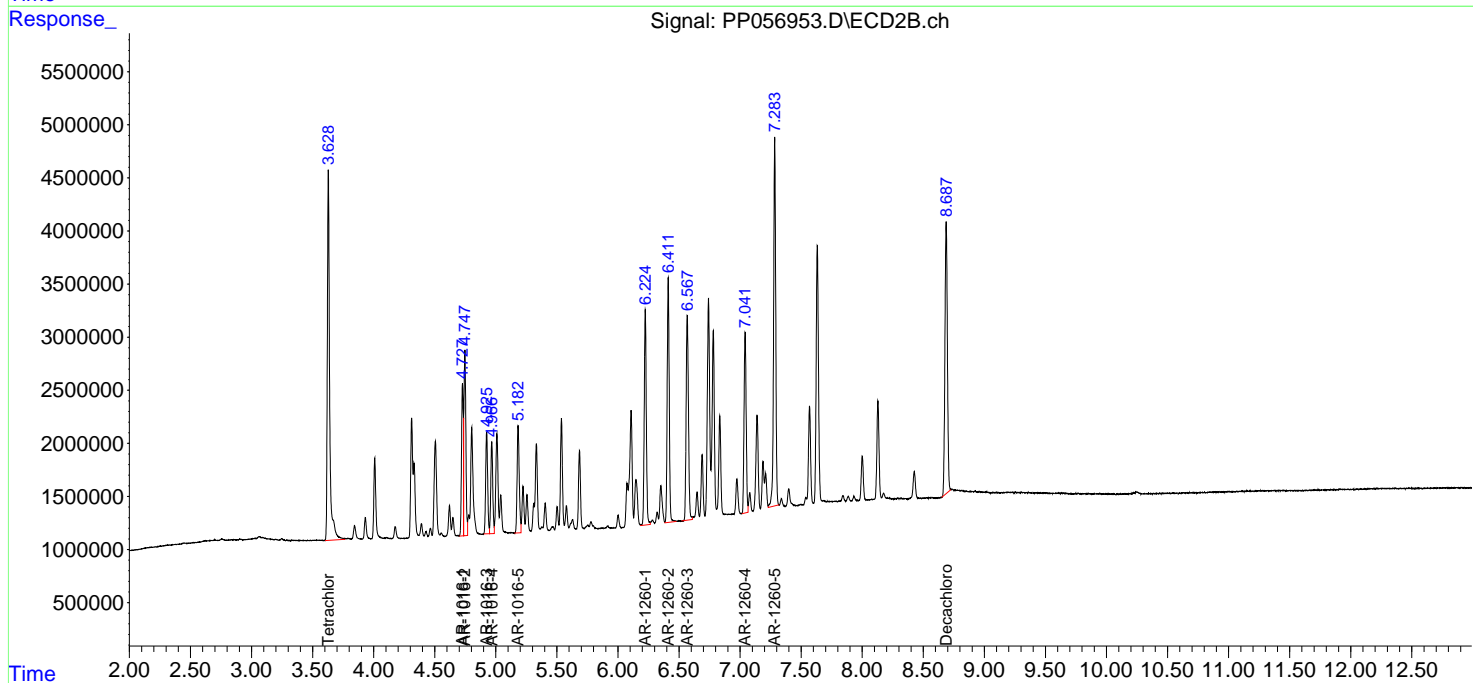
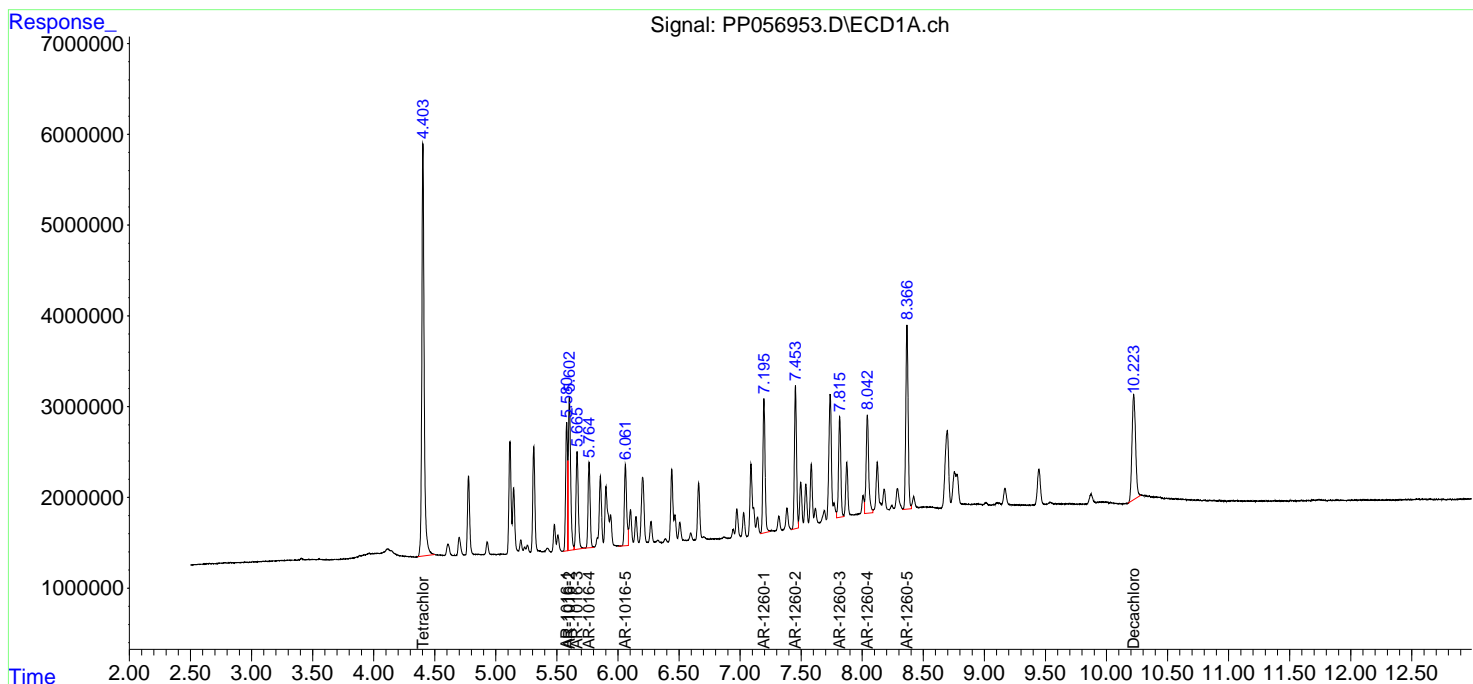
(f)=RT Delta > 1/2 Window (#)=Amounts differ by > 25% (m)=manual int.

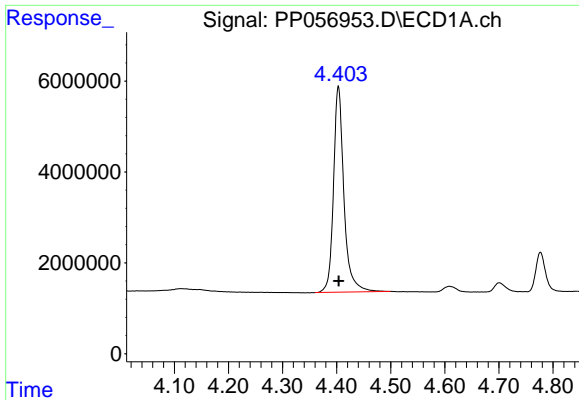
Data Path : Z:\pestpcbsrv\HPCHEM1\ECD_P\Data\PP041823\
 Data File : PP056953.D
 Signal(s) : Signal #1: ECD1A.ch Signal #2: ECD2B.ch
 Acq On : 18 Apr 2023 13:17
 Operator : YP\AJ
 Sample : AR1660ICC250
 Misc :
 ALS Vial : 6 Sample Multiplier: 1

Instrument :
 ECD_P
 ClientSampleId :

Integration File signal 1: autoint1.e
 Integration File signal 2: autoint2.e
 Quant Time: Apr 18 13:47:22 2023
 Quant Method : Z:\pestpcbsrv\HPCHEM1\ECD_P\methods\PP041823.M
 Quant Title : GC EXTRACTABLES
 QLast Update : Tue Apr 18 13:41:22 2023
 Response via : Initial Calibration
 Integrator: ChemStation

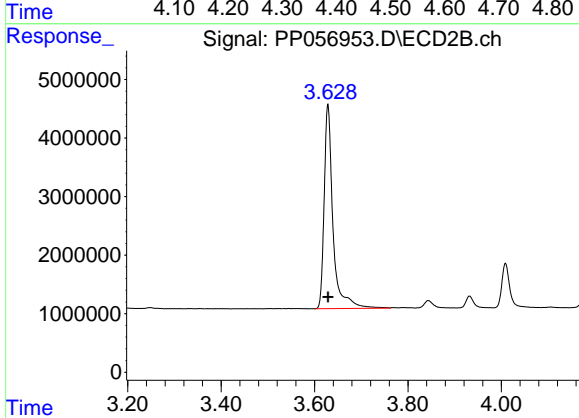
Volume Inj. : 2 µl
 Signal #1 Phase : ZB-MR1 Signal #2 Phase: ZB-MR2
 Signal #1 Info : 30Mx0.32mmx 0.50µ Signal #2 Info : 30M x 0.32mm x 0.25µm



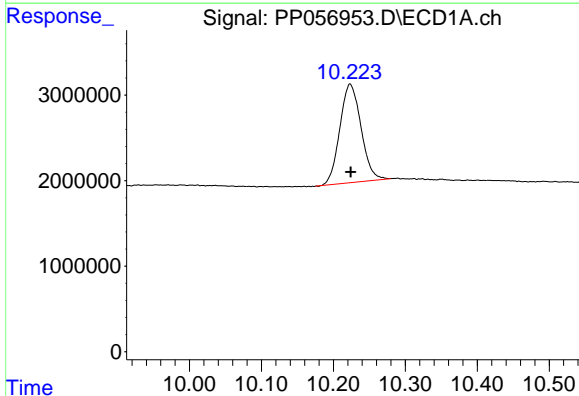


#1 Tetrachloro-m-xylene
 R.T.: 4.403 min
 Delta R.T.: 0.000 min
 Response: 60833863
 Conc: 25.05 ng/ml

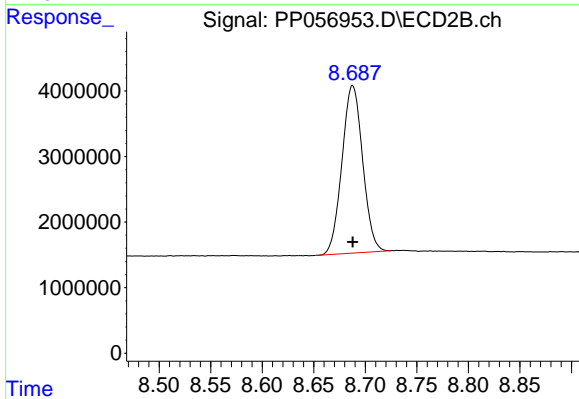
Instrument :
 ECD_P
 ClientSampleId :



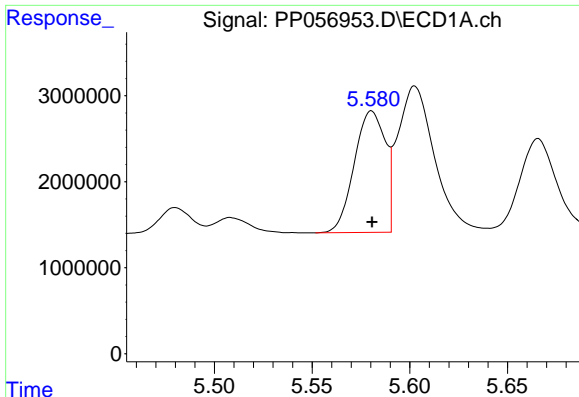
#1 Tetrachloro-m-xylene
 R.T.: 3.629 min
 Delta R.T.: 0.000 min
 Response: 45755432
 Conc: 25.37 ng/ml



#2 Decachlorobiphenyl
 R.T.: 10.223 min
 Delta R.T.: -0.001 min
 Response: 23609052
 Conc: 25.32 ng/ml



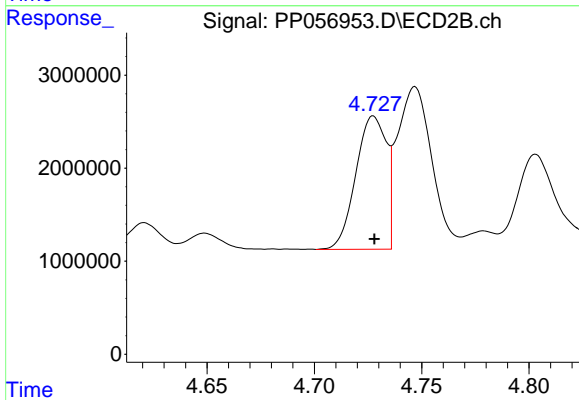
#2 Decachlorobiphenyl
 R.T.: 8.688 min
 Delta R.T.: 0.000 min
 Response: 35687092
 Conc: 26.04 ng/ml



#3 AR-1016-1

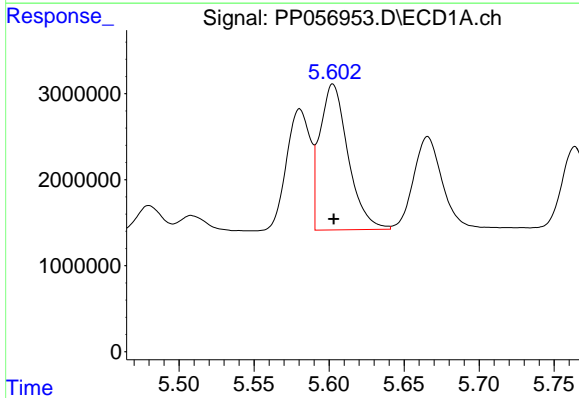
R.T.: 5.580 min
 Delta R.T.: 0.000 min
 Response: 15605699
 Conc: 264.44 ng/ml

Instrument :
 ECD_P
 ClientSampleId :



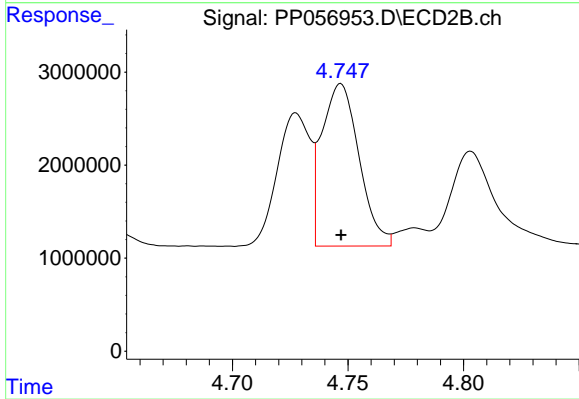
#3 AR-1016-1

R.T.: 4.728 min
 Delta R.T.: 0.000 min
 Response: 14179189
 Conc: 264.72 ng/ml



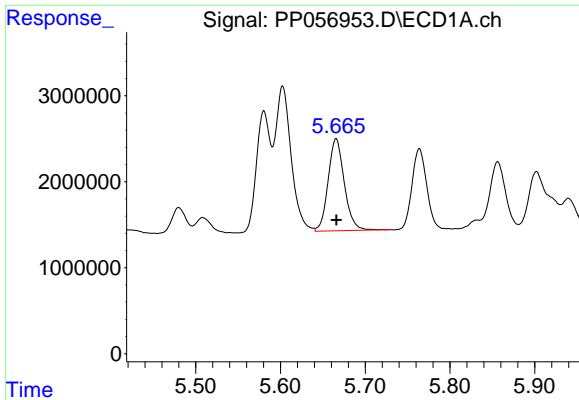
#4 AR-1016-2

R.T.: 5.603 min
 Delta R.T.: 0.000 min
 Response: 22206691
 Conc: 257.97 ng/ml



#4 AR-1016-2

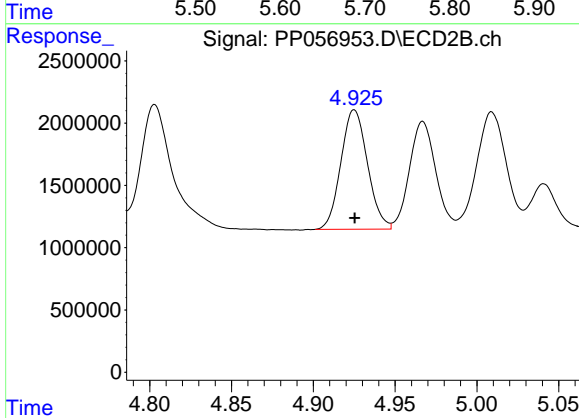
R.T.: 4.747 min
 Delta R.T.: 0.000 min
 Response: 19580440
 Conc: 259.38 ng/ml



#5 AR-1016-3

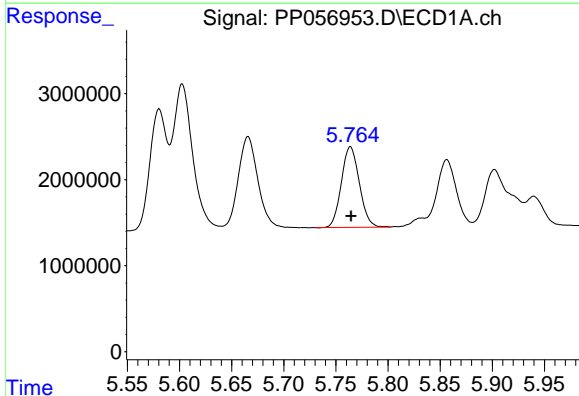
R.T.: 5.666 min
 Delta R.T.: 0.000 min
 Response: 14240342
 Conc: 263.48 ng/ml

Instrument :
 ECD_P
 ClientSampleId :



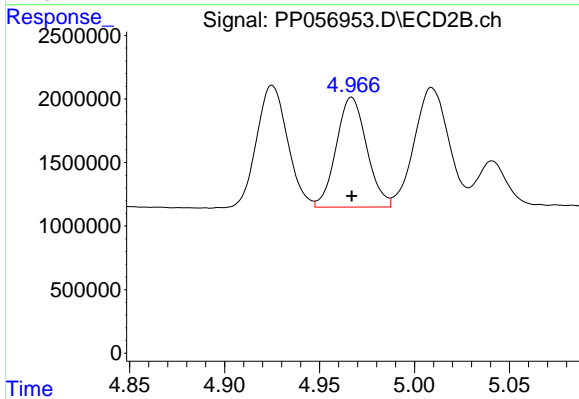
#5 AR-1016-3

R.T.: 4.925 min
 Delta R.T.: 0.000 min
 Response: 10873280
 Conc: 262.28 ng/ml



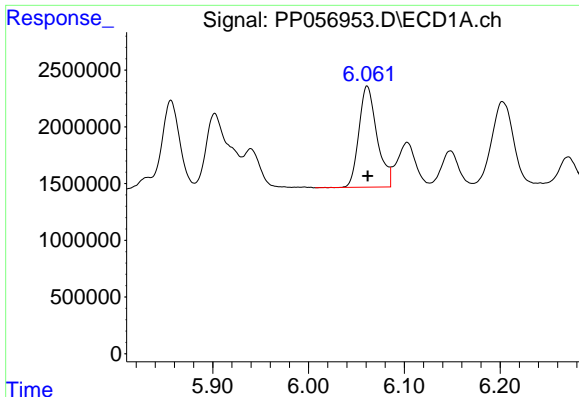
#6 AR-1016-4

R.T.: 5.764 min
 Delta R.T.: 0.000 min
 Response: 11315354
 Conc: 261.04 ng/ml



#6 AR-1016-4

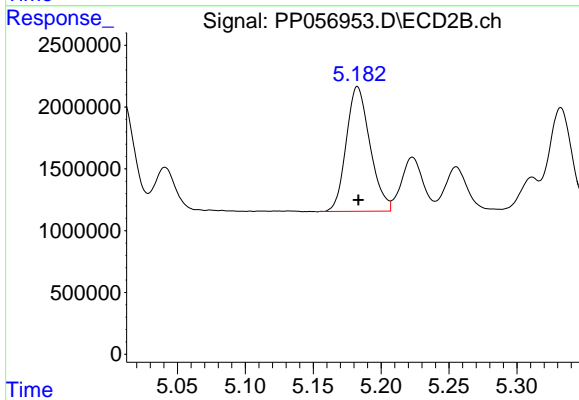
R.T.: 4.967 min
 Delta R.T.: 0.000 min
 Response: 9657797
 Conc: 266.41 ng/ml



#7 AR-1016-5

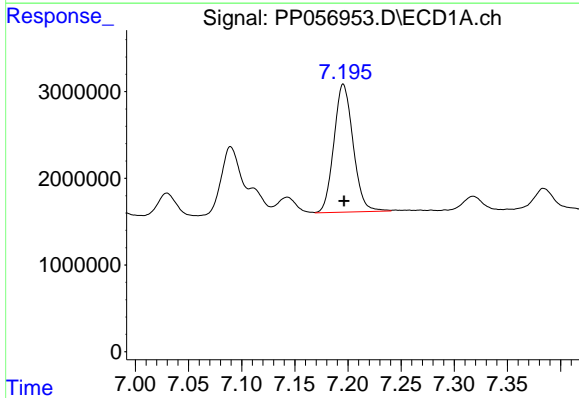
R.T.: 6.061 min
 Delta R.T.: 0.000 min
 Response: 11686704
 Conc: 262.27 ng/ml

Instrument :
 ECD_P
 ClientSampleId :



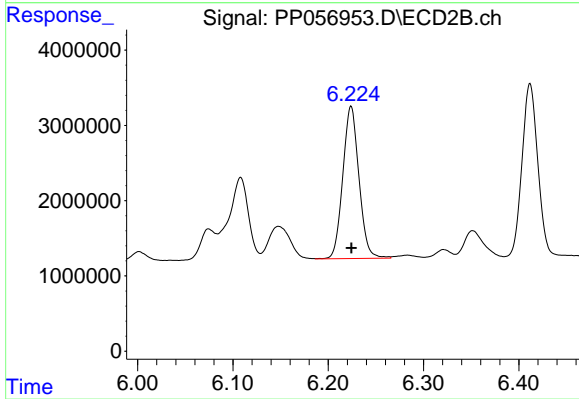
#7 AR-1016-5

R.T.: 5.183 min
 Delta R.T.: 0.000 min
 Response: 12297585
 Conc: 265.53 ng/ml



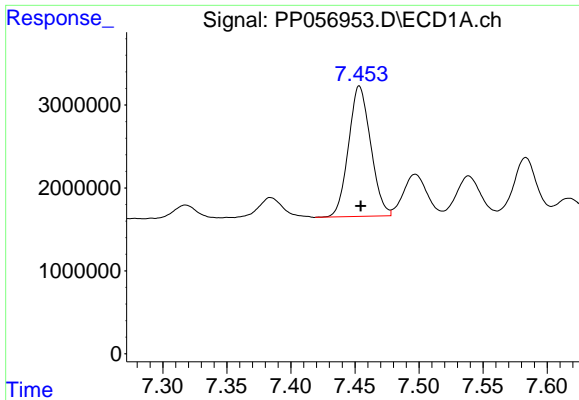
#31 AR-1260-1

R.T.: 7.196 min
 Delta R.T.: 0.000 min
 Response: 18584816
 Conc: 261.15 ng/ml



#31 AR-1260-1

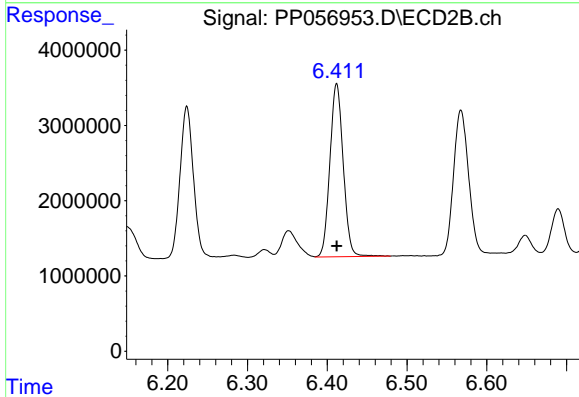
R.T.: 6.224 min
 Delta R.T.: 0.000 min
 Response: 23876688
 Conc: 263.91 ng/ml



#32 AR-1260-2

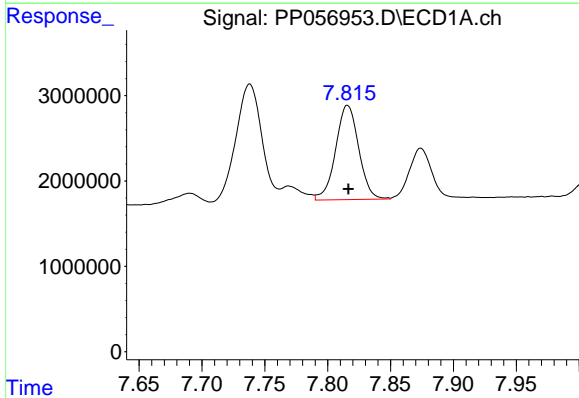
R.T.: 7.453 min
 Delta R.T.: -0.001 min
 Response: 18933878
 Conc: 262.20 ng/ml

Instrument :
 ECD_P
 ClientSampleId :



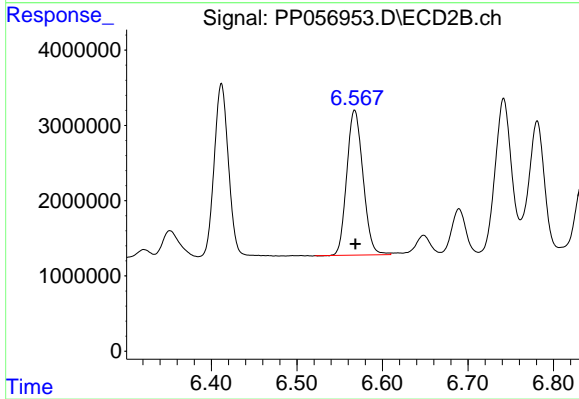
#32 AR-1260-2

R.T.: 6.412 min
 Delta R.T.: 0.000 min
 Response: 26687199
 Conc: 262.23 ng/ml



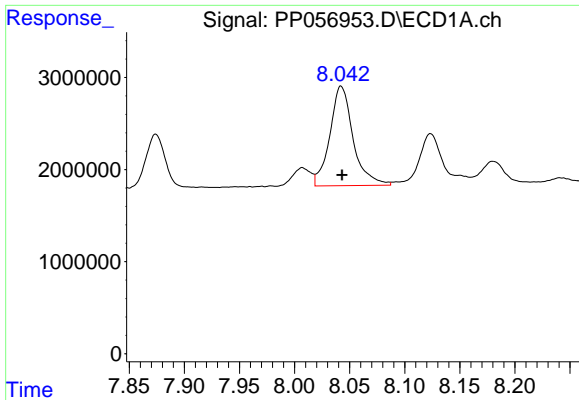
#33 AR-1260-3

R.T.: 7.816 min
 Delta R.T.: 0.000 min
 Response: 14149586
 Conc: 263.10 ng/ml



#33 AR-1260-3

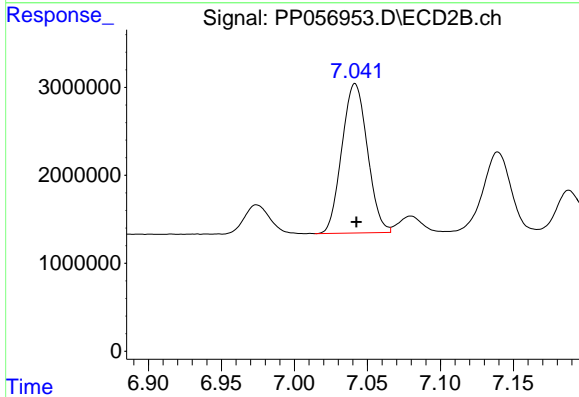
R.T.: 6.568 min
 Delta R.T.: 0.000 min
 Response: 25382294
 Conc: 260.13 ng/ml



#34 AR-1260-4

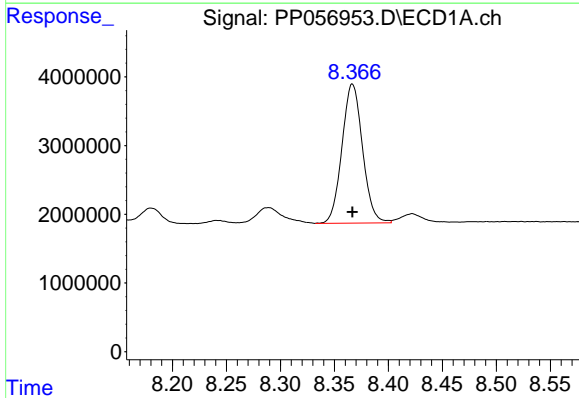
R.T.: 8.042 min
 Delta R.T.: 0.000 min
 Response: 15921564
 Conc: 258.68 ng/ml

Instrument :
 ECD_P
 ClientSampleId :



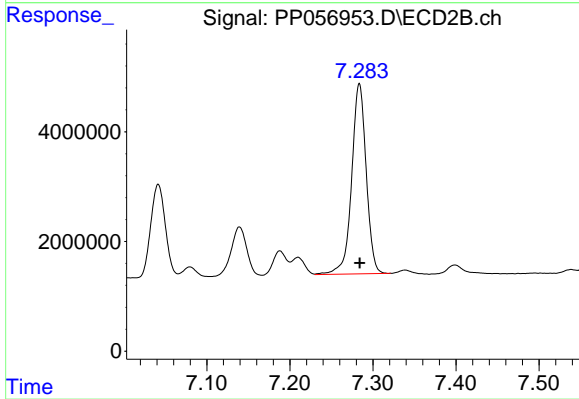
#34 AR-1260-4

R.T.: 7.042 min
 Delta R.T.: 0.000 min
 Response: 20655269
 Conc: 263.65 ng/ml



#35 AR-1260-5

R.T.: 8.367 min
 Delta R.T.: 0.000 min
 Response: 26857159
 Conc: 257.35 ng/ml



#35 AR-1260-5

R.T.: 7.284 min
 Delta R.T.: 0.000 min
 Response: 42221709
 Conc: 256.87 ng/ml