

Data Path : P:\HPCHEM1\ECD_P\Data\PP041918\
 Data File : PP025164.D
 Signal(s) : Signal #1: ECD1A.CH Signal #2: ECD2B.CH
 Acq On : 19 Apr 2018 20:54
 Operator : UA/AJ
 Sample : PB108386BS
 Misc :
 ALS Vial : 15 Sample Multiplier: 1

Instrument :
 ECD_P
 ClientSampleId :
 PB108386BS

Integration File signal 1: autoint1.e
 Integration File signal 2: autoint2.e
 Quant Time: Apr 20 06:57:29 2018
 Quant Method : P:\HPCHEM1\ECD_P\methods\PP032918.M
 Quant Title : 8080.M
 QLast Update : Mon Apr 02 02:18:04 2018
 Response via : Initial Calibration
 Integrator: ChemStation 6890 Scale Mode: Large solvent peaks clipped

Volume Inj. : 2 µl
 Signal #1 Phase : Rtx-CLPesticides Signal #2 Phase: Rtx-CLPesticides2
 Signal #1 Info : 30M x 0.32mm x0.5 Signal #2 Info : 30M x 0.32mm x 0.25µm

Compound	RT#1	RT#2	Resp#1	Resp#2	ng/ml	ng/ml

System Monitoring Compounds						
4) S 2,4-DCAA	11.413	11.117	271.4E6	296.0E6	512.817	498.857
Target Compounds						
1) T Dalapon	2.904	2.453	324.9E6	341.5E6	421.255	403.367
2) T 3,5-DICHL...	9.820	9.243	387.0E6	385.3E6	469.526	477.907
3) T 4-Nitroph...	11.047	10.277	14279978	177.3E6	39.005	496.896 #
5) T DICAMBA	11.731	11.411	1178.9E6	1101.8E6	477.628	477.020
6) T MCPP	12.071	11.667	93531472	12715882	59.967	8.868 #
7) T MCPA	12.389	12.007	17533395	88442052	7.538	41.920 #
8) T DICHLORPROP	12.921	12.522	306.2E6	285.3E6	514.720	484.447
9) T 2,4-D	13.283	13.006	367.5E6	373.5E6	501.675	492.031
10) T Pentachlo...	13.666	13.553	4858.7E6	4287.7E6	517.632	483.083
11) T 2,4,5-TP ...	14.540	14.158	1938.9E6	1745.5E6	459.645	469.683
12) T 2,4,5-T	14.940	14.782	1773.3E6	1391.3E6	486.662	466.347
13) T 2,4-DB	15.687	15.380	236.6E6	200.7E6	521.398	474.105
14) T DINOSEB	17.155	15.777	1179.9E6	969.7E6	425.677	396.573
15) T Picloram	16.962	17.111	2528.9E6	2095.9E6	432.097	435.519
16) T DCPA	17.526	16.992	1603.3E6	1465.8E6	331.186	339.053

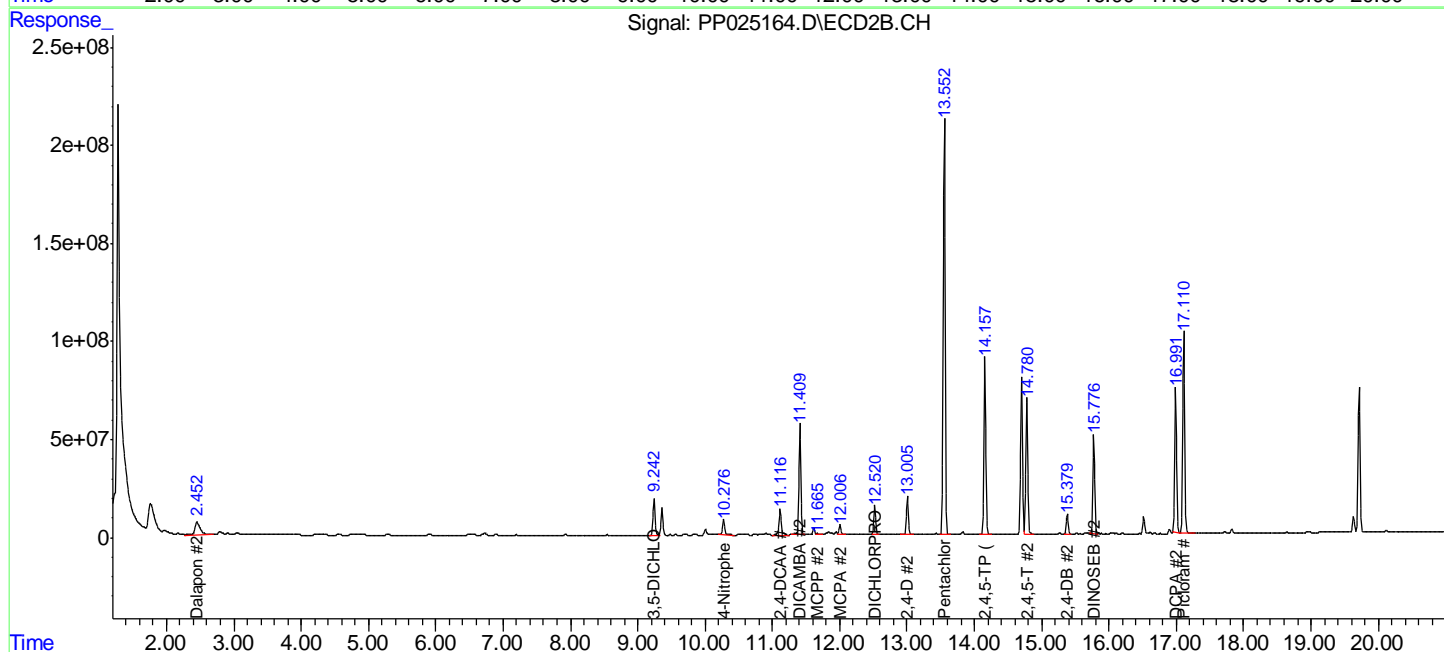
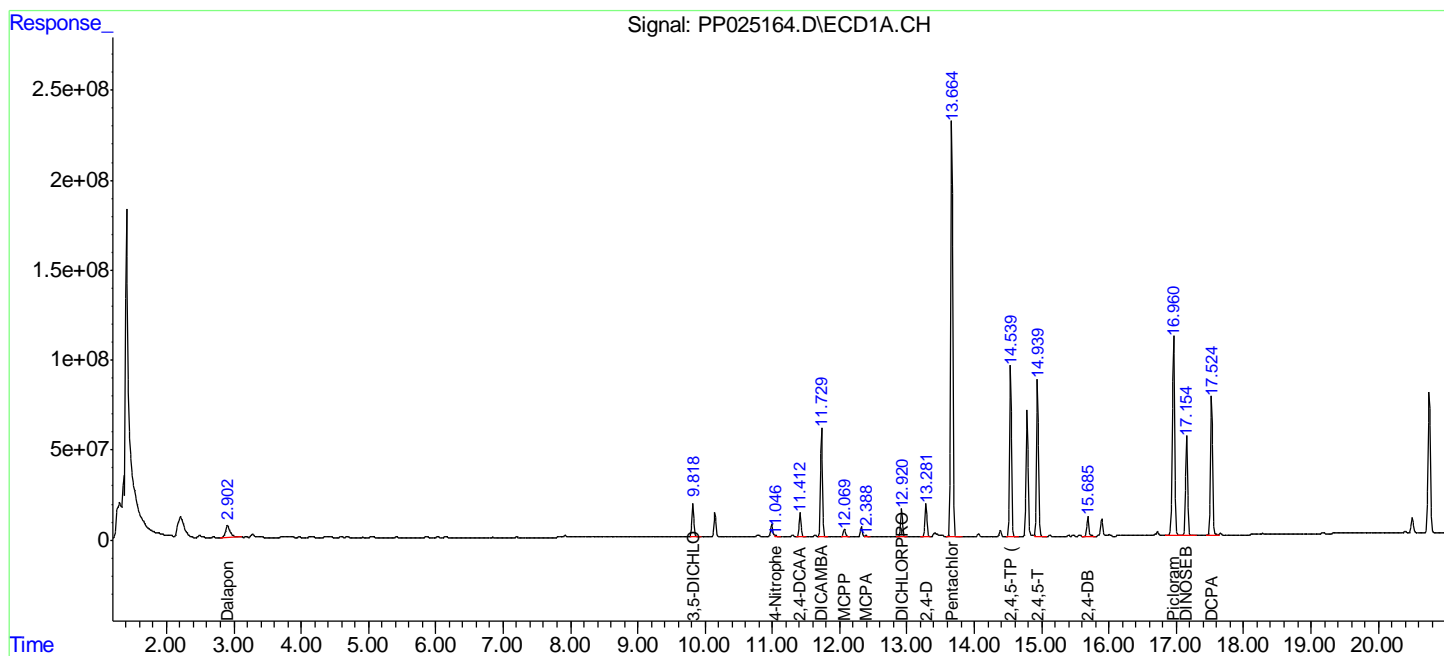
(f)=RT Delta > 1/2 Window (#)=Amounts differ by > 25% (m)=manual int.

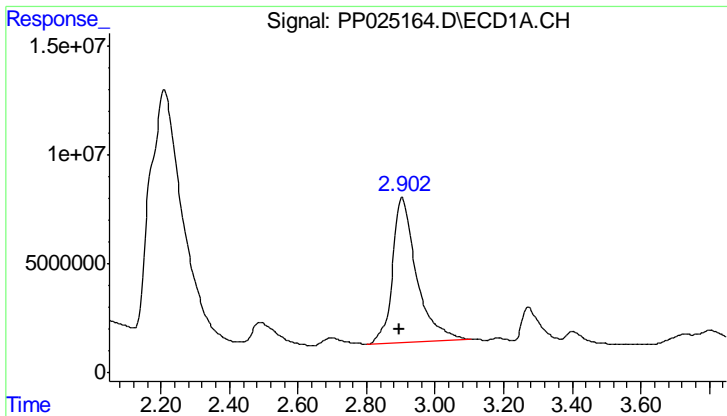
Data Path : P:\HPCHEM1\ECD_P\Data\PP041918\
 Data File : PP025164.D
 Signal(s) : Signal #1: ECD1A.CH Signal #2: ECD2B.CH
 Acq On : 19 Apr 2018 20:54
 Operator : UA/AJ
 Sample : PB108386BS
 Misc :
 ALS Vial : 15 Sample Multiplier: 1

Instrument :
 ECD_P
 Client Sampled :
 PB108386BS

Integration File signal 1: autoint1.e
 Integration File signal 2: autoint2.e
 Quant Time: Apr 20 06:57:29 2018
 Quant Method : P:\HPCHEM1\ECD_P\methods\PP032918.M
 Quant Title : 8080.M
 QLast Update : Mon Apr 02 02:18:04 2018
 Response via : Initial Calibration
 Integrator: ChemStation 6890 Scale Mode: Large solvent peaks clipped

Volume Inj. : 2 µl
 Signal #1 Phase : Rtx-CLPesticides Signal #2 Phase: Rtx-CLPesticides2
 Signal #1 Info : 30M x 0.32mm x0.5 Signal #2 Info : 30M x 0.32mm x 0.25µm

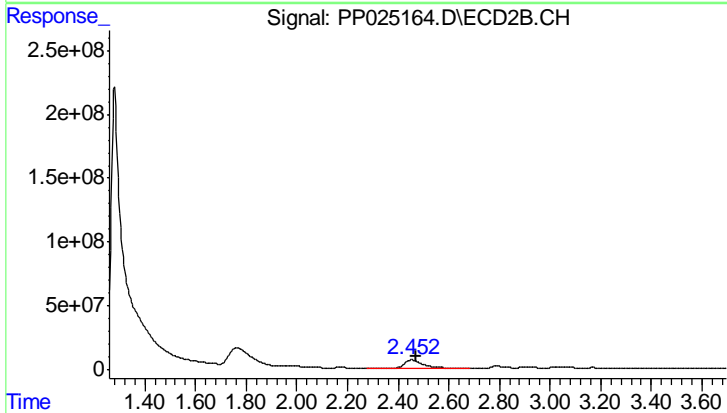




#1 Dalapon

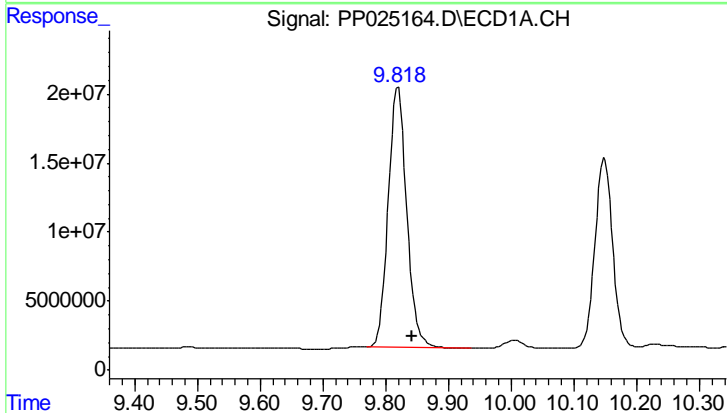
R.T.: 2.904 min
 Delta R.T.: 0.008 min
 Response: 324942634
 Conc: 421.25 ng/ml

Instrument :
 ECD_P
 ClientSampled :
 PB108386BS



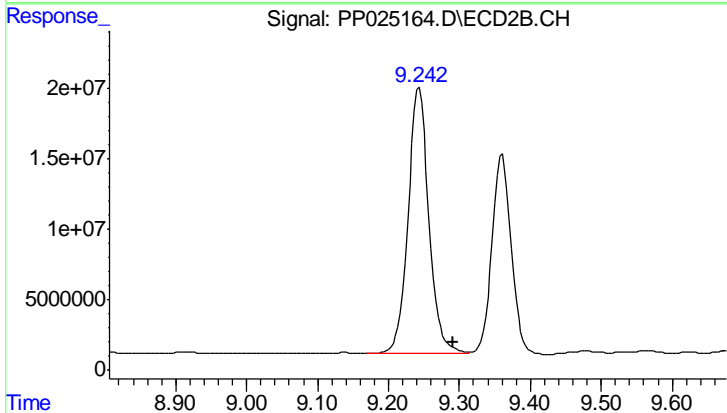
#1 Dalapon

R.T.: 2.453 min
 Delta R.T.: -0.018 min
 Response: 341450338
 Conc: 403.37 ng/ml



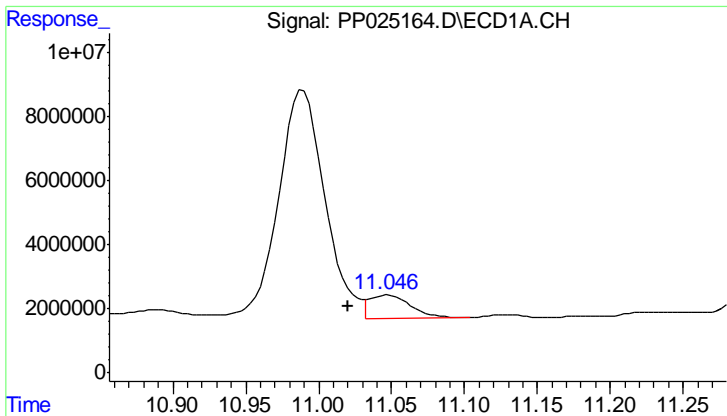
#2 3,5-DICHLOROBENZOIC ACID

R.T.: 9.820 min
 Delta R.T.: -0.022 min
 Response: 386965934
 Conc: 469.53 ng/ml



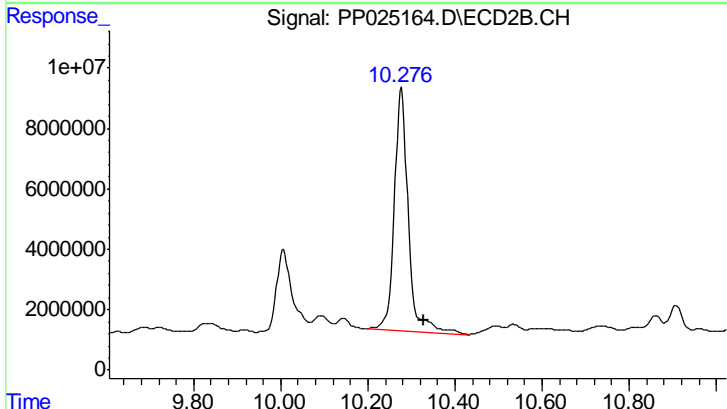
#2 3,5-DICHLOROBENZOIC ACID

R.T.: 9.243 min
 Delta R.T.: -0.048 min
 Response: 385258384
 Conc: 477.91 ng/ml

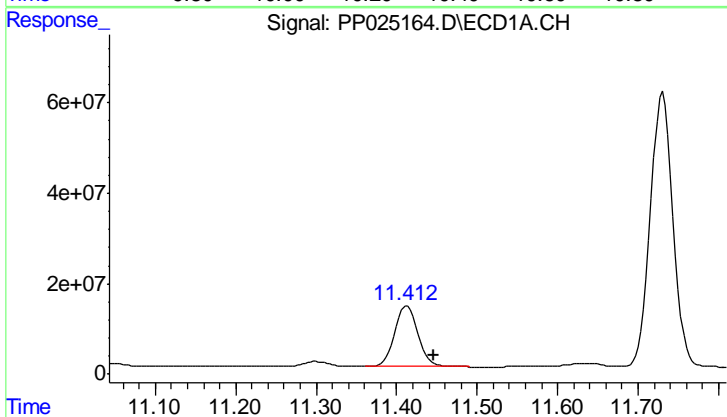


#3 4-Nitrophenol
 R.T.: 11.047 min
 Delta R.T.: 0.027 min
 Response: 14279978
 Conc: 39.01 ng/ml

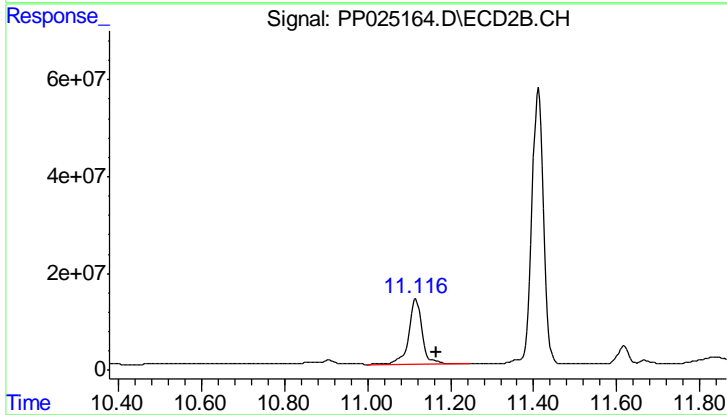
Instrument :
 ECD_P
 ClientSampled :
 PB108386BS



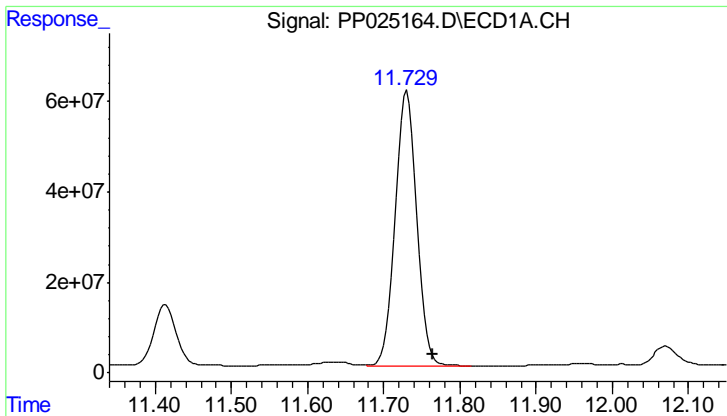
#3 4-Nitrophenol
 R.T.: 10.277 min
 Delta R.T.: -0.051 min
 Response: 177327262
 Conc: 496.90 ng/ml



#4 2,4-DCAA
 R.T.: 11.413 min
 Delta R.T.: -0.033 min
 Response: 271420005
 Conc: 512.82 ng/ml



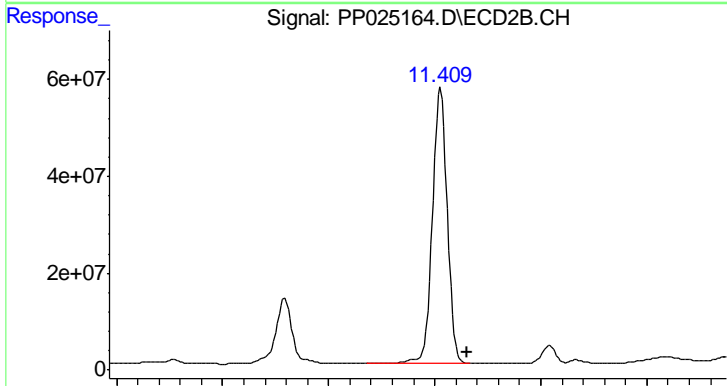
#4 2,4-DCAA
 R.T.: 11.117 min
 Delta R.T.: -0.050 min
 Response: 296028569
 Conc: 498.86 ng/ml



#5 DICAMBA

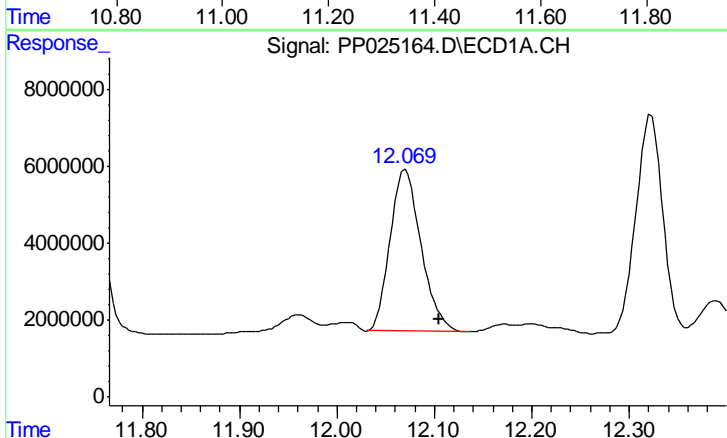
R.T.: 11.731 min
 Delta R.T.: -0.034 min
 Response: 1178872994
 Conc: 477.63 ng/ml

Instrument :
 ECD_P
 ClientSampled :
 PB108386BS



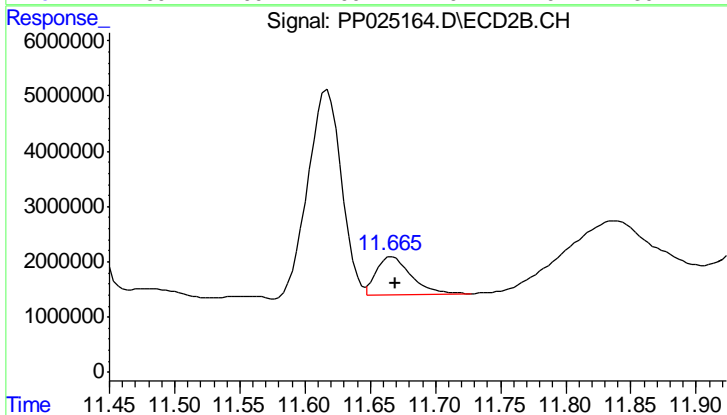
#5 DICAMBA

R.T.: 11.411 min
 Delta R.T.: -0.050 min
 Response: 1101813800
 Conc: 477.02 ng/ml



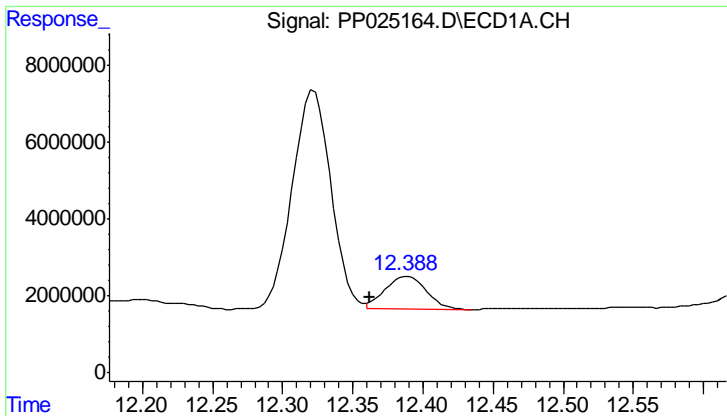
#6 MCPP

R.T.: 12.071 min
 Delta R.T.: -0.035 min
 Response: 93531472
 Conc: 59.97 ug/ml



#6 MCPP

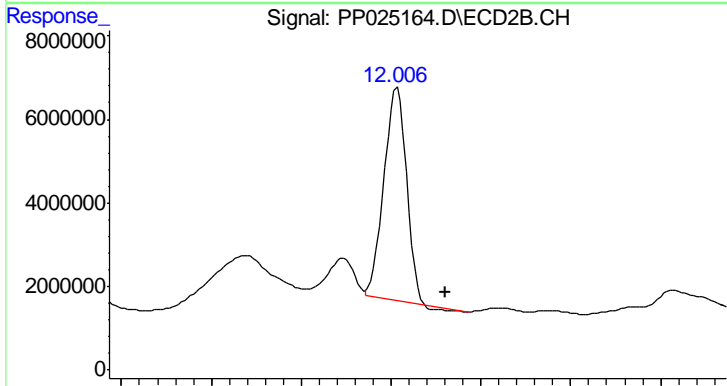
R.T.: 11.667 min
 Delta R.T.: -0.002 min
 Response: 12715882
 Conc: 8.87 ug/ml



#7 MCPA

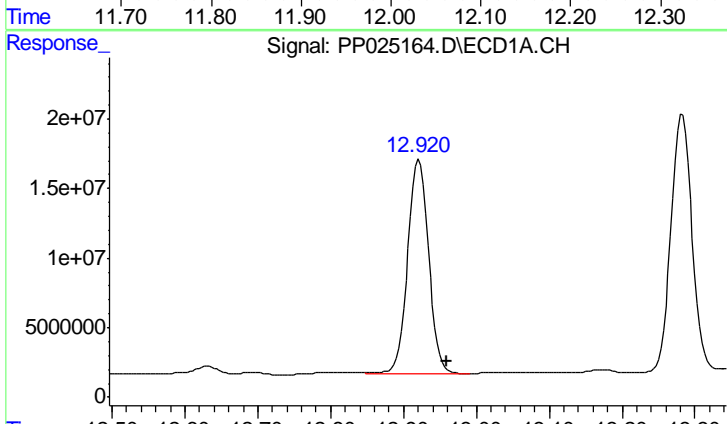
R.T.: 12.389 min
 Delta R.T.: 0.027 min
 Response: 17533395
 Conc: 7.54 ug/ml

Instrument :
 ECD_P
 ClientSampled :
 PB108386BS



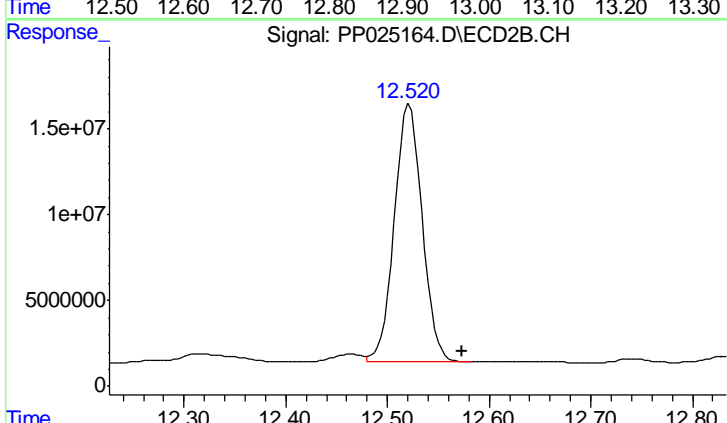
#7 MCPA

R.T.: 12.007 min
 Delta R.T.: -0.053 min
 Response: 88442052
 Conc: 41.92 ug/ml



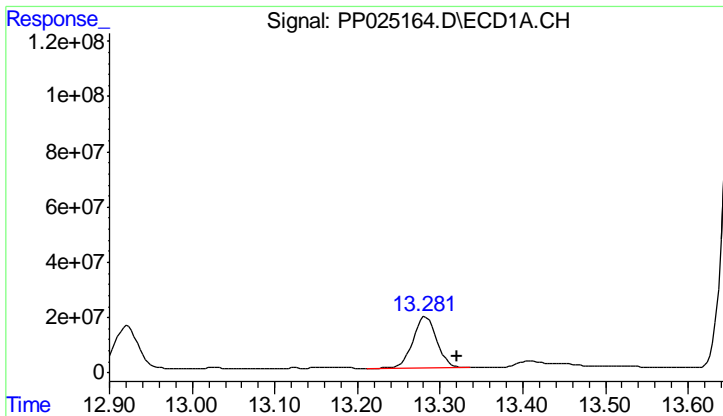
#8 DICHLORPROP

R.T.: 12.921 min
 Delta R.T.: -0.038 min
 Response: 306234198
 Conc: 514.72 ng/ml



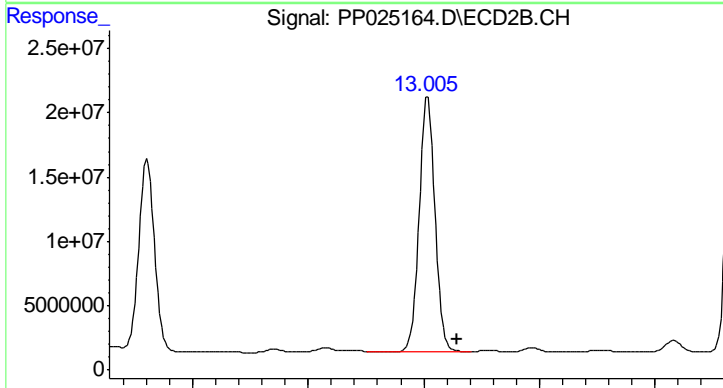
#8 DICHLORPROP

R.T.: 12.522 min
 Delta R.T.: -0.052 min
 Response: 285300140
 Conc: 484.45 ng/ml

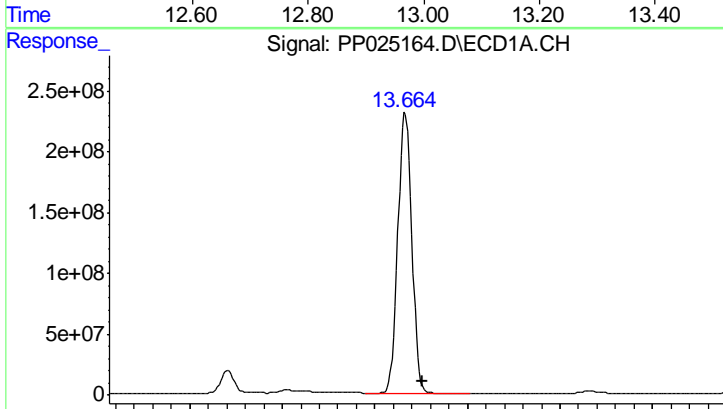


#9 2,4-D
 R.T.: 13.283 min
 Delta R.T.: -0.038 min
 Response: 367493210
 Conc: 501.68 ng/ml

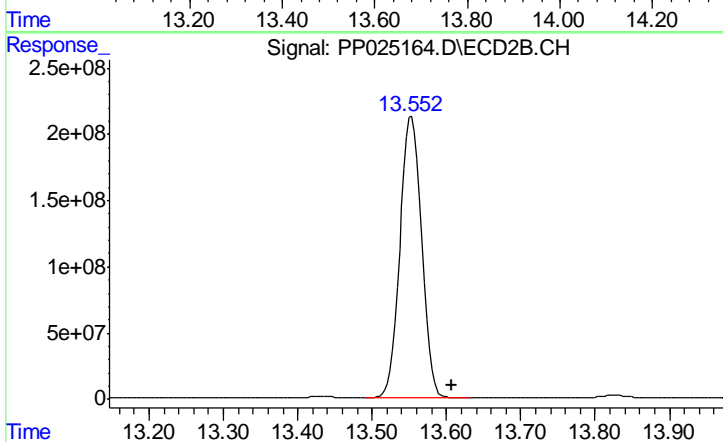
Instrument :
 ECD_P
 ClientSampleId :
 PB108386BS



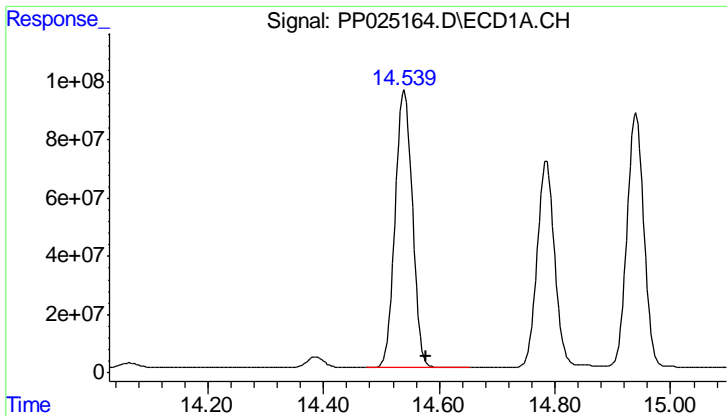
#9 2,4-D
 R.T.: 13.006 min
 Delta R.T.: -0.052 min
 Response: 373522880
 Conc: 492.03 ng/ml



#10 Pentachlorophenol
 R.T.: 13.666 min
 Delta R.T.: -0.038 min
 Response: 4858747993
 Conc: 517.63 ng/ml



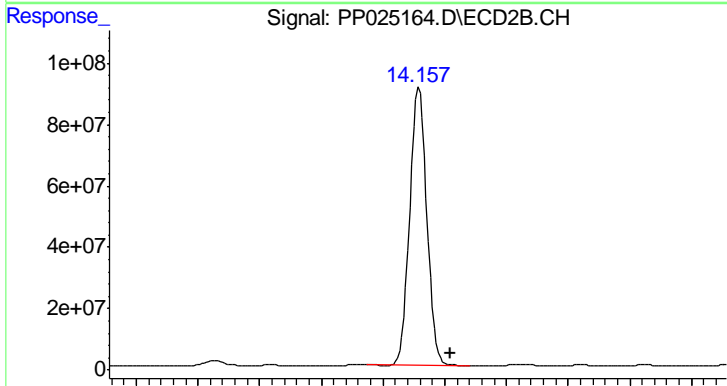
#10 Pentachlorophenol
 R.T.: 13.553 min
 Delta R.T.: -0.054 min
 Response: 4287711782
 Conc: 483.08 ng/ml



#11 2,4,5-TP (SILVEX)

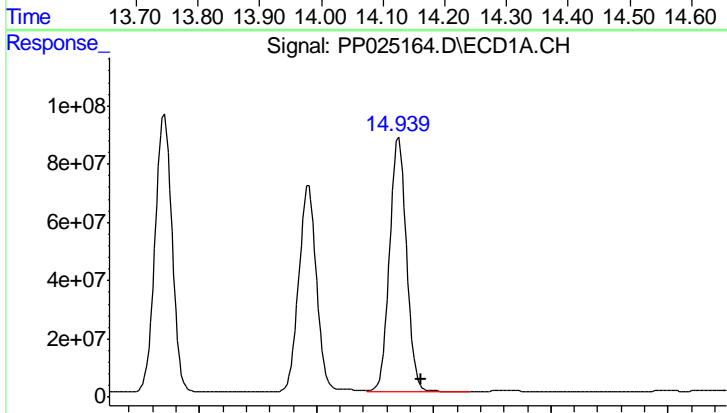
R.T.: 14.540 min
 Delta R.T.: -0.037 min
 Response: 1938862057
 Conc: 459.65 ng/ml

Instrument :
 ECD_P
 ClientSampleId :
 PB108386BS



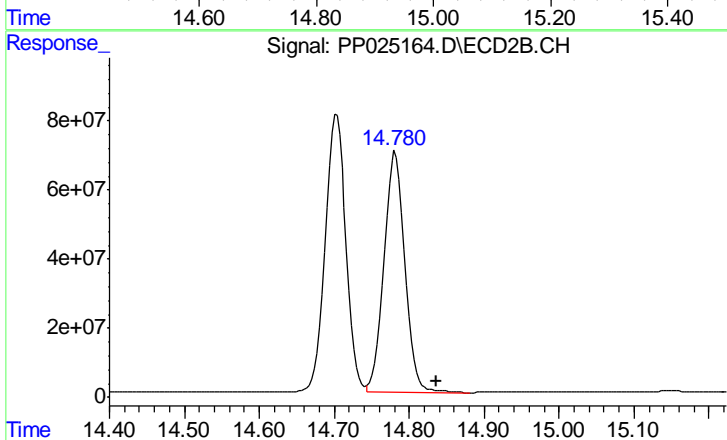
#11 2,4,5-TP (SILVEX)

R.T.: 14.158 min
 Delta R.T.: -0.052 min
 Response: 1745511703
 Conc: 469.68 ng/ml



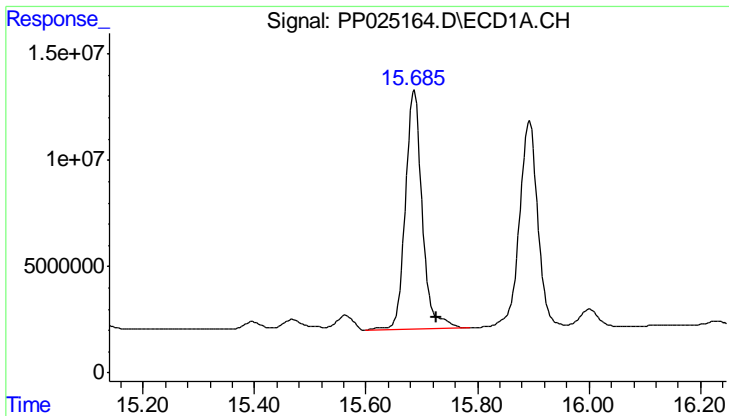
#12 2,4,5-T

R.T.: 14.940 min
 Delta R.T.: -0.039 min
 Response: 1773308653
 Conc: 486.66 ng/ml



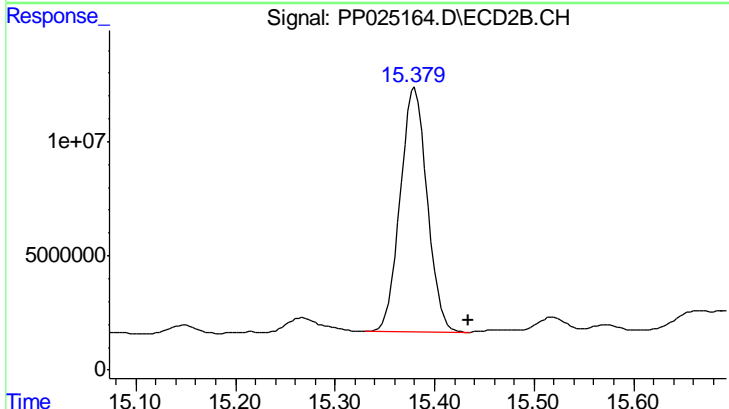
#12 2,4,5-T

R.T.: 14.782 min
 Delta R.T.: -0.054 min
 Response: 1391254711
 Conc: 466.35 ng/ml

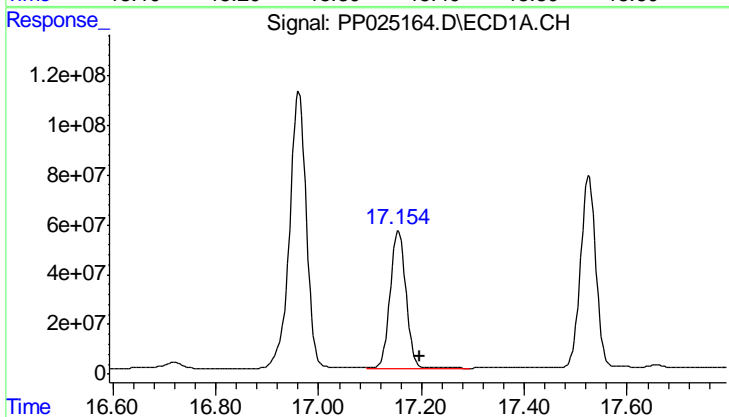


#13 2,4-DB
 R.T.: 15.687 min
 Delta R.T.: -0.039 min
 Response: 236606802
 Conc: 521.40 ng/ml

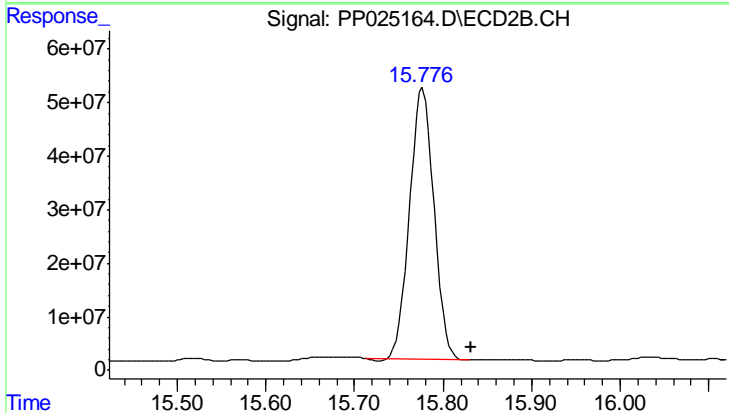
Instrument :
 ECD_P
 ClientSampleId :
 PB108386BS



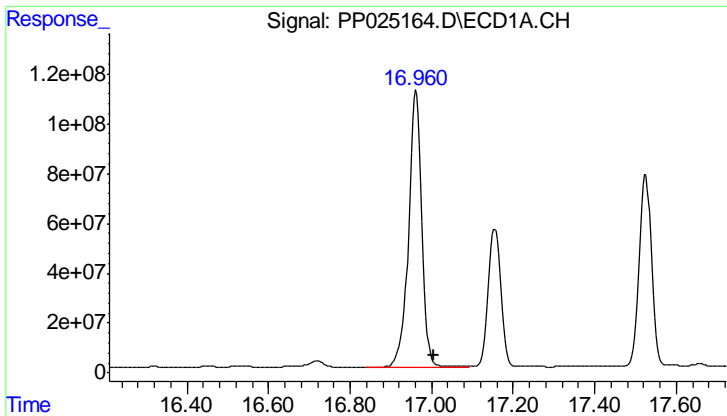
#13 2,4-DB
 R.T.: 15.380 min
 Delta R.T.: -0.054 min
 Response: 200699736
 Conc: 474.11 ng/ml



#14 DINOSEB
 R.T.: 17.155 min
 Delta R.T.: -0.043 min
 Response: 1179868224
 Conc: 425.68 ng/ml



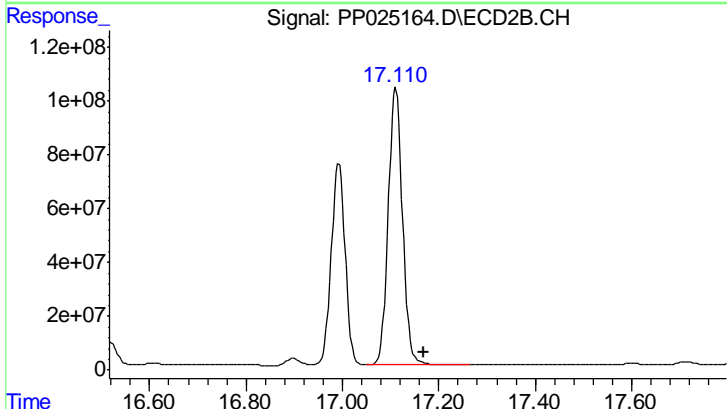
#14 DINOSEB
 R.T.: 15.777 min
 Delta R.T.: -0.054 min
 Response: 969669070
 Conc: 396.57 ng/ml



#15 Picloram

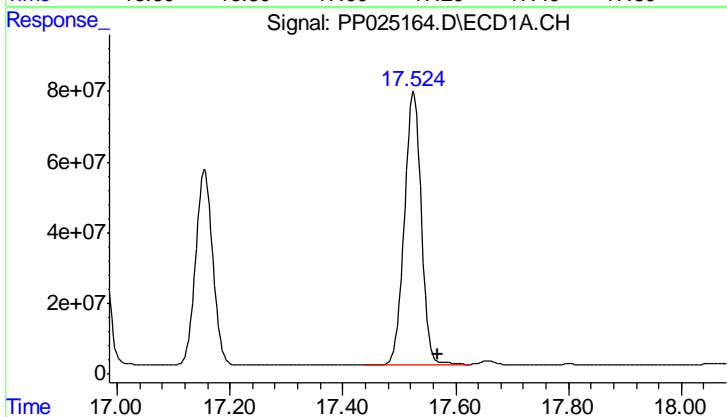
R.T.: 16.962 min
 Delta R.T.: -0.043 min
 Response: 2528936904
 Conc: 432.10 ng/ml

Instrument :
 ECD_P
 ClientSampleId :
 PB108386BS



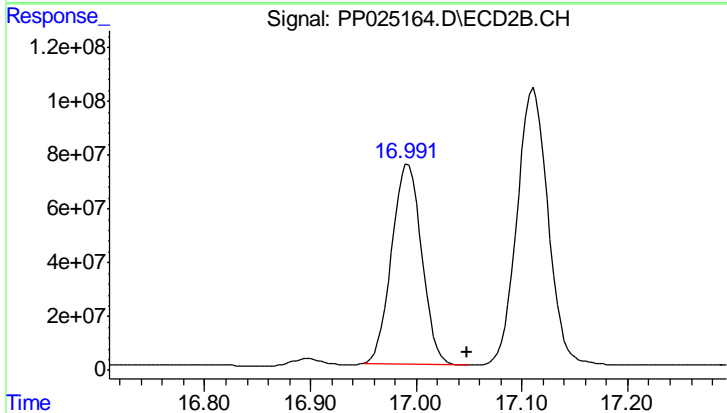
#15 Picloram

R.T.: 17.111 min
 Delta R.T.: -0.056 min
 Response: 2095896676
 Conc: 435.52 ng/ml



#16 DCPA

R.T.: 17.526 min
 Delta R.T.: -0.042 min
 Response: 1603294710
 Conc: 331.19 ng/ml



#16 DCPA

R.T.: 16.992 min
 Delta R.T.: -0.055 min
 Response: 1465822841
 Conc: 339.05 ng/ml