

Data Path : Z:\pestpcbsrv\HPCHEM1\ECD_P\Data\PP041922\
 Data File : PP046279.D
 Signal(s) : Signal #1: ECD1A.ch Signal #2: ECD2B.ch
 Acq On : 19 Apr 2022 10:13
 Operator : YP\AJ
 Sample : AR1660CCC500
 Misc :
 ALS Vial : 3 Sample Multiplier: 1

Instrument :
 ECD_P
ClientSampleId :
 AR1660CCC500

Integration File signal 1: autoint1.e
 Integration File signal 2: autoint2.e
 Quant Time: Apr 19 15:15:09 2022
 Quant Method : Z:\pestpcbsrv\HPCHEM1\ECD_P\methods\PP041222.M
 Quant Title : GC EXTRACTABLES
 QLast Update : Tue Apr 19 10:41:05 2022
 Response via : Initial Calibration
 Integrator: ChemStation

Volume Inj. : 2 µl
 Signal #1 Phase : ZB-MR2 Signal #2 Phase: ZB-MR2
 Signal #1 Info : 30Mx0.32mmx 0.50µ Signal #2 Info : 30M x 0.32mm x 0.25µm

Compound	RT#1	RT#2	Resp#1	Resp#2	ng/ml	ng/ml

System Monitoring Compounds						
1) SA Tetrachlo...	3.869	3.133	131.5E6	82929079	53.465	52.190
2) SA Decachlor...	9.961	8.463	77172507	75159272	47.011	52.732
Target Compounds						
3) L1 AR-1016-1	5.116	4.268	39142861	29789701	510.537	507.258
4) L1 AR-1016-2	5.139	4.286	59148831	42116997	511.503	504.123
5) L1 AR-1016-3	5.205	4.470	35725080	23021887	518.510	521.167
6) L1 AR-1016-4	5.310	4.519	29373633	18386780	499.175	515.257
7) L1 AR-1016-5	5.630	4.742	27176112	23696829	492.810	498.821
31) L7 AR-1260-1	6.856	5.845	41265131	40916159	467.465	516.962
32) L7 AR-1260-2	7.138	6.052	50298984	48946682	490.982	522.882
33) L7 AR-1260-3	7.533	6.213	39504995	45536747	479.517	514.055
34) L7 AR-1260-4	7.780	6.724	40366353	37891085	476.357	527.685
35) L7 AR-1260-5	8.121	6.991	81169039	90898288	494.233	535.121

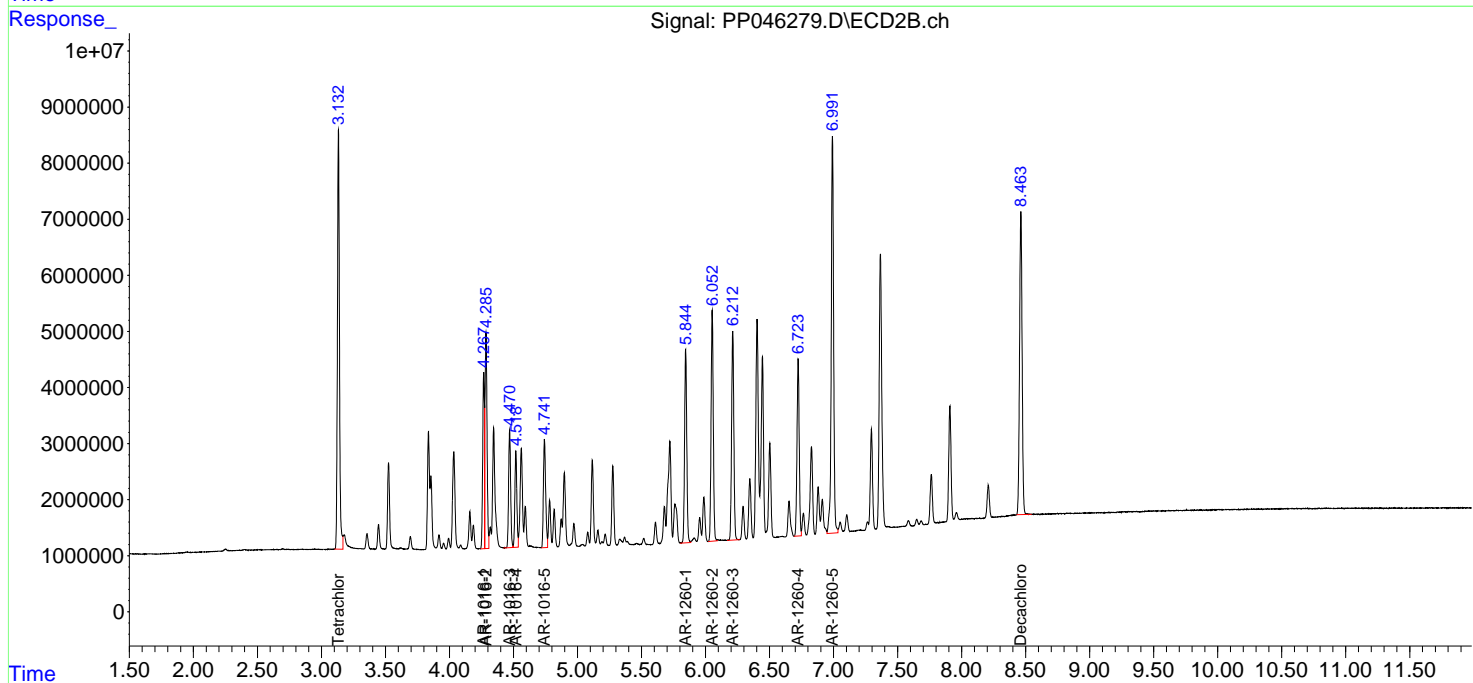
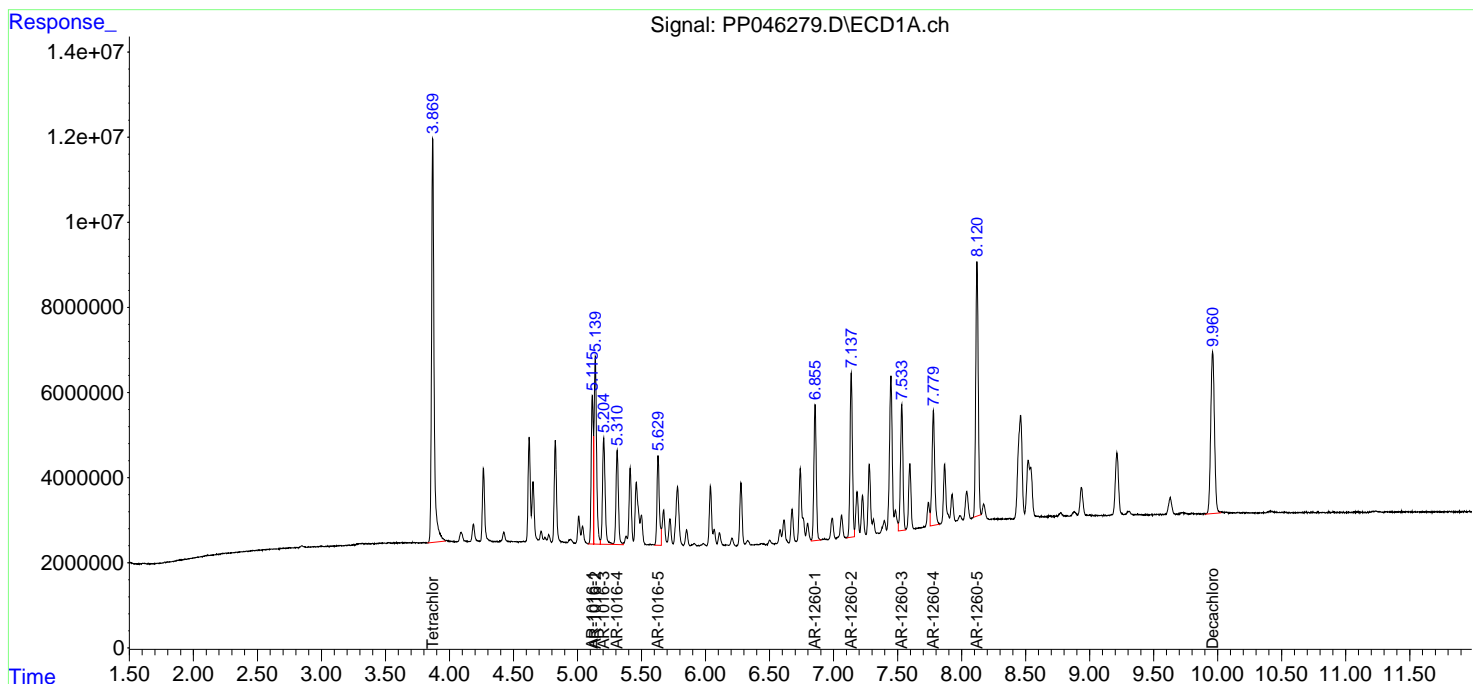
(f)=RT Delta > 1/2 Window (#)=Amounts differ by > 25% (m)=manual int.

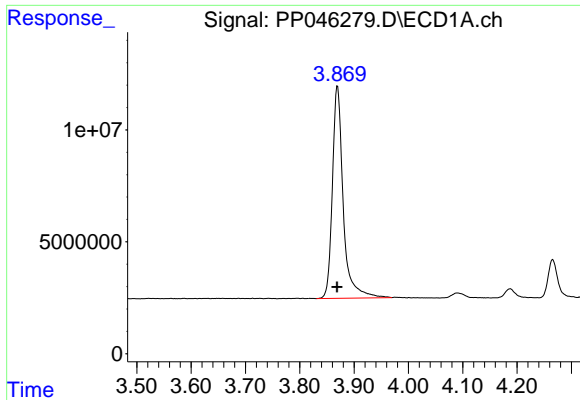
Data Path : Z:\pestpcbsrv\HPCHEM1\ECD_P\Data\PP041922\
 Data File : PP046279.D
 Signal(s) : Signal #1: ECD1A.ch Signal #2: ECD2B.ch
 Acq On : 19 Apr 2022 10:13
 Operator : YP\AJ
 Sample : AR1660CCC500
 Misc :
 ALS Vial : 3 Sample Multiplier: 1

Instrument :
 ECD_P
 ClientSampleId :
 AR1660CCC500

Integration File signal 1: autoint1.e
 Integration File signal 2: autoint2.e
 Quant Time: Apr 19 15:15:09 2022
 Quant Method : Z:\pestpcbsrv\HPCHEM1\ECD_P\methods\PP041222.M
 Quant Title : GC EXTRACTABLES
 QLast Update : Tue Apr 19 10:41:05 2022
 Response via : Initial Calibration
 Integrator: ChemStation

Volume Inj. : 2 µl
 Signal #1 Phase : ZB-MR1 Signal #2 Phase: ZB-MR2
 Signal #1 Info : 30Mx0.32mmx 0.50µ Signal #2 Info : 30M x 0.32mm x 0.25µm





#1 Tetrachloro-m-xylene

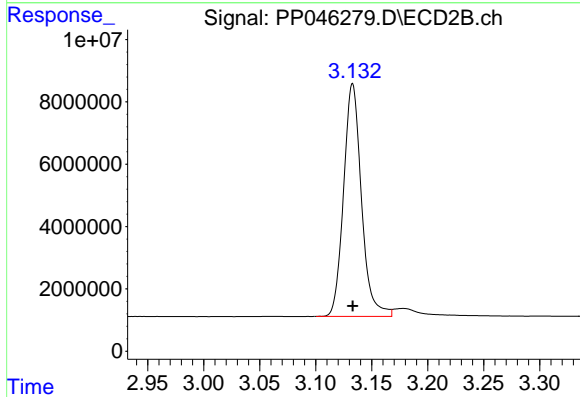
R.T.: 3.869 min

Delta R.T.: 0.000 min

Response: 131507324

Conc: 53.46 ng/ml

Instrument :
ECD_P
ClientSampleId :
AR1660CCC500



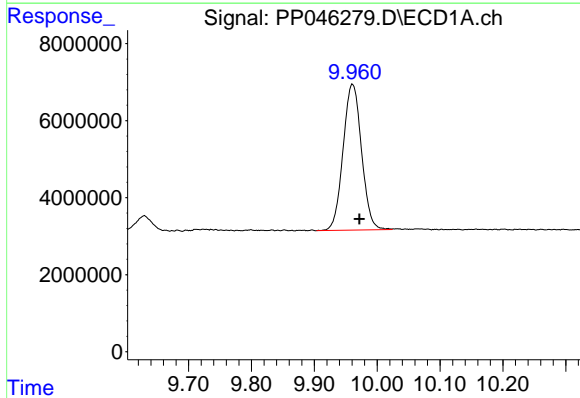
#1 Tetrachloro-m-xylene

R.T.: 3.133 min

Delta R.T.: 0.000 min

Response: 82929079

Conc: 52.19 ng/ml



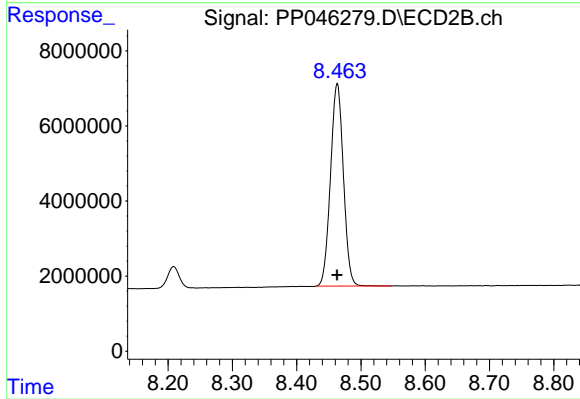
#2 Decachlorobiphenyl

R.T.: 9.961 min

Delta R.T.: -0.011 min

Response: 77172507

Conc: 47.01 ng/ml



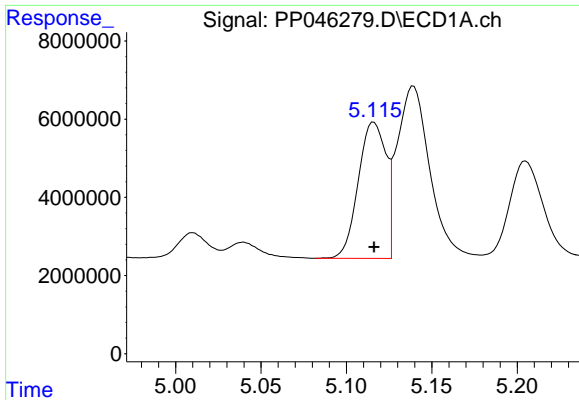
#2 Decachlorobiphenyl

R.T.: 8.463 min

Delta R.T.: 0.000 min

Response: 75159272

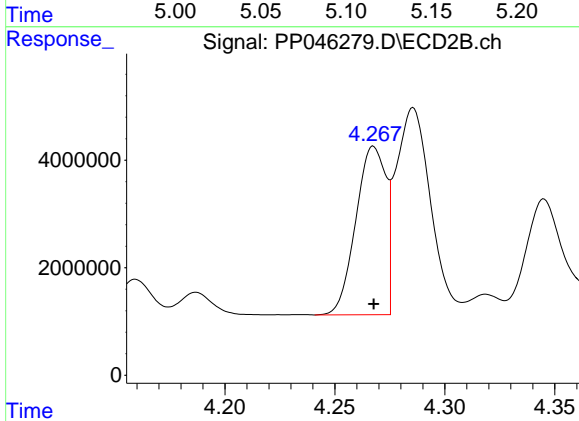
Conc: 52.73 ng/ml



#3 AR-1016-1

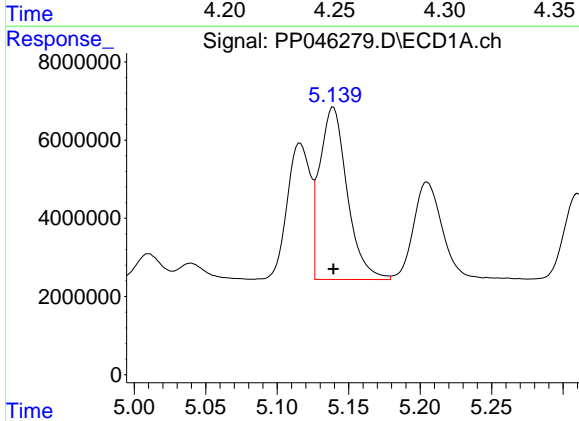
R.T.: 5.116 min
 Delta R.T.: 0.000 min
 Response: 39142861
 Conc: 510.54 ng/ml

Instrument :
 ECD_P
 ClientSampleId :
 AR1660CCC500



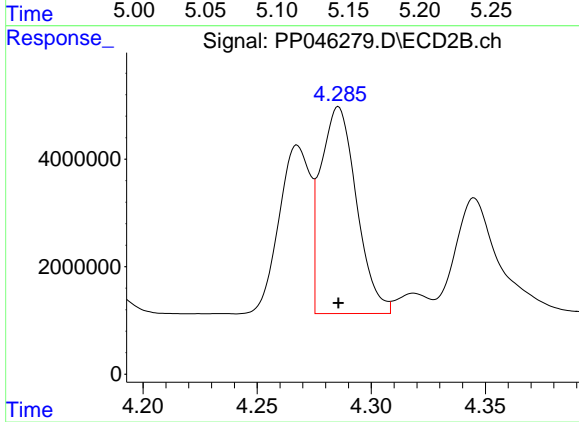
#3 AR-1016-1

R.T.: 4.268 min
 Delta R.T.: 0.000 min
 Response: 29789701
 Conc: 507.26 ng/ml



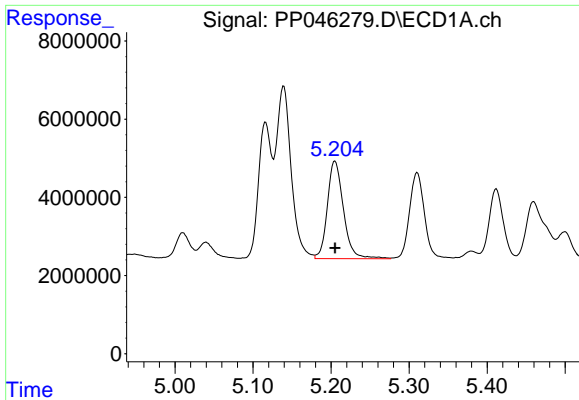
#4 AR-1016-2

R.T.: 5.139 min
 Delta R.T.: 0.000 min
 Response: 59148831
 Conc: 511.50 ng/ml



#4 AR-1016-2

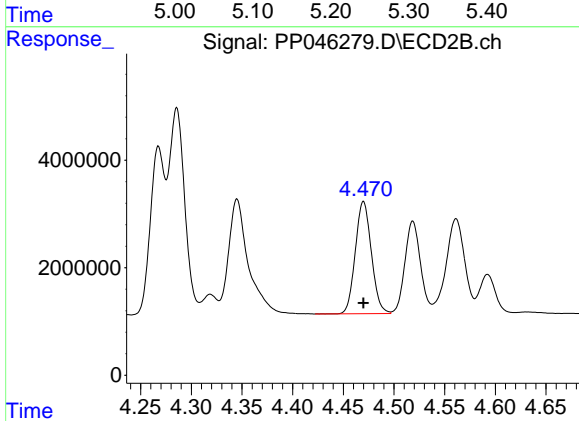
R.T.: 4.286 min
 Delta R.T.: 0.000 min
 Response: 42116997
 Conc: 504.12 ng/ml



#5 AR-1016-3

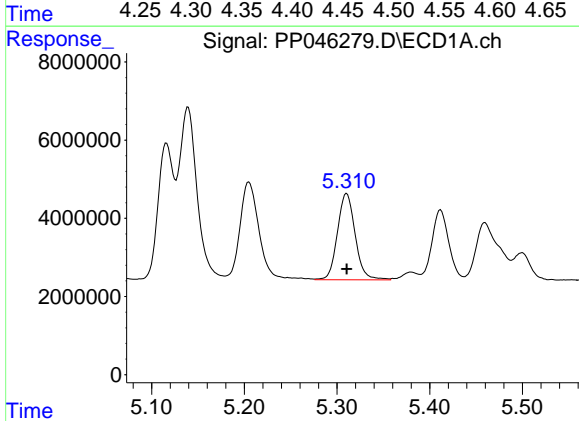
R.T.: 5.205 min
 Delta R.T.: 0.000 min
 Response: 35725080
 Conc: 518.51 ng/ml

Instrument :
 ECD_P
 ClientSampleId :
 AR1660CCC500



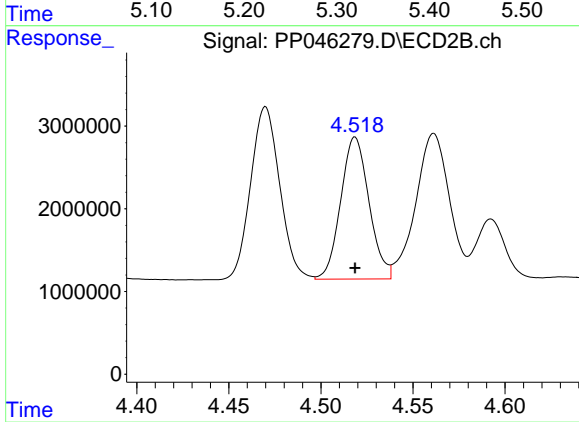
#5 AR-1016-3

R.T.: 4.470 min
 Delta R.T.: 0.000 min
 Response: 23021887
 Conc: 521.17 ng/ml



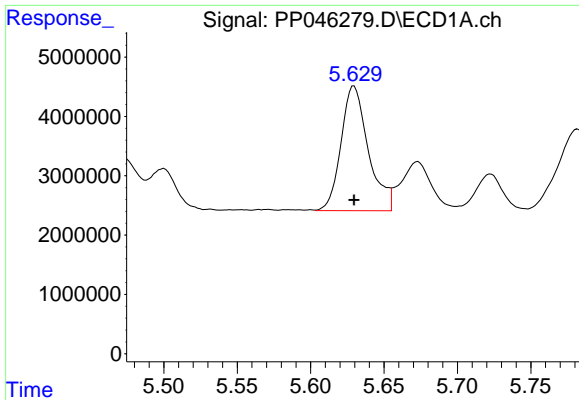
#6 AR-1016-4

R.T.: 5.310 min
 Delta R.T.: 0.000 min
 Response: 29373633
 Conc: 499.17 ng/ml



#6 AR-1016-4

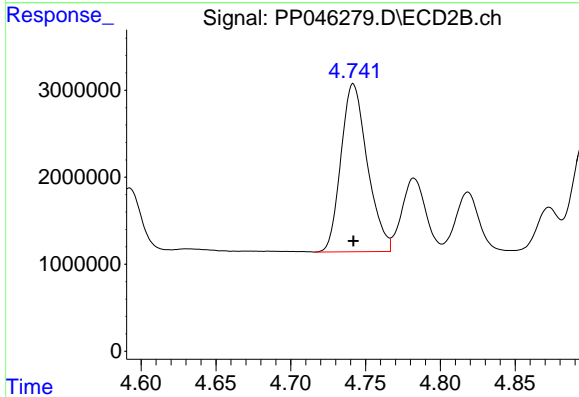
R.T.: 4.519 min
 Delta R.T.: 0.000 min
 Response: 18386780
 Conc: 515.26 ng/ml



#7 AR-1016-5

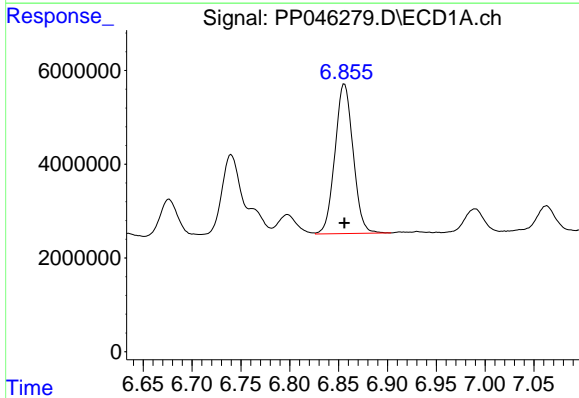
R.T.: 5.630 min
 Delta R.T.: 0.000 min
 Response: 27176112
 Conc: 492.81 ng/ml

Instrument :
 ECD_P
 ClientSampleId :
 AR1660CCC500



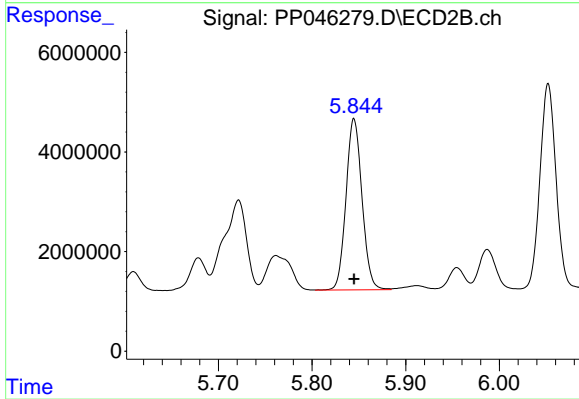
#7 AR-1016-5

R.T.: 4.742 min
 Delta R.T.: 0.000 min
 Response: 23696829
 Conc: 498.82 ng/ml



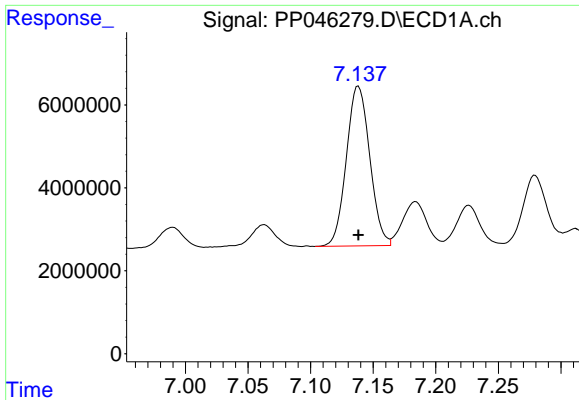
#31 AR-1260-1

R.T.: 6.856 min
 Delta R.T.: 0.000 min
 Response: 41265131
 Conc: 467.46 ng/ml



#31 AR-1260-1

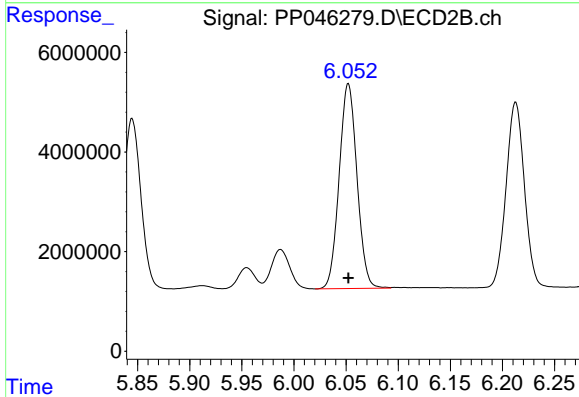
R.T.: 5.845 min
 Delta R.T.: 0.000 min
 Response: 40916159
 Conc: 516.96 ng/ml



#32 AR-1260-2

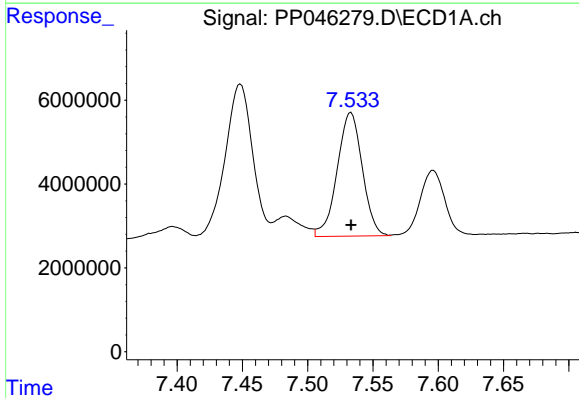
R.T.: 7.138 min
 Delta R.T.: 0.000 min
 Response: 50298984
 Conc: 490.98 ng/ml

Instrument :
 ECD_P
 ClientSampleId :
 AR1660CCC500



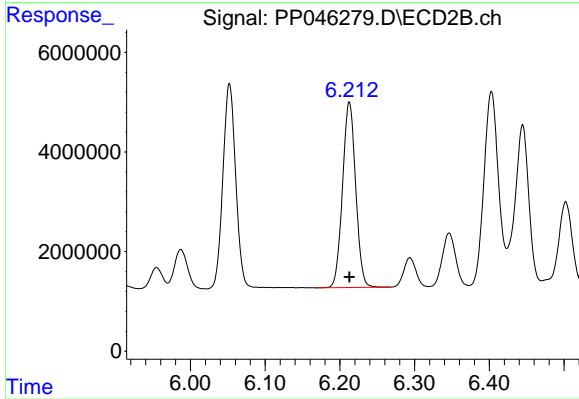
#32 AR-1260-2

R.T.: 6.052 min
 Delta R.T.: 0.000 min
 Response: 48946682
 Conc: 522.88 ng/ml



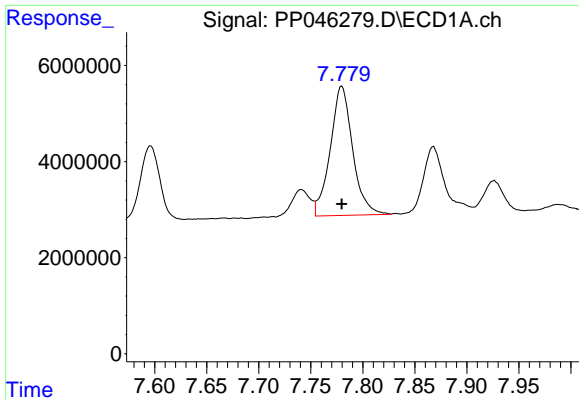
#33 AR-1260-3

R.T.: 7.533 min
 Delta R.T.: 0.000 min
 Response: 39504995
 Conc: 479.52 ng/ml



#33 AR-1260-3

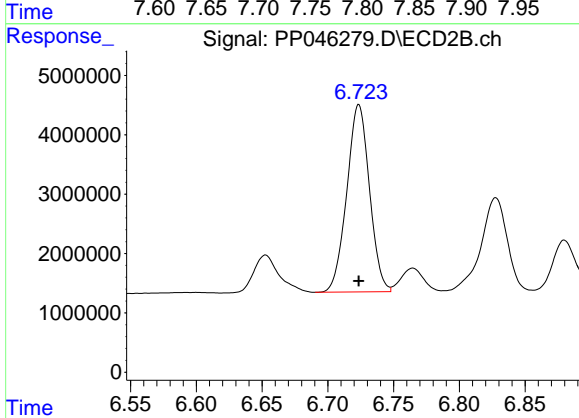
R.T.: 6.213 min
 Delta R.T.: 0.000 min
 Response: 45536747
 Conc: 514.05 ng/ml



#34 AR-1260-4

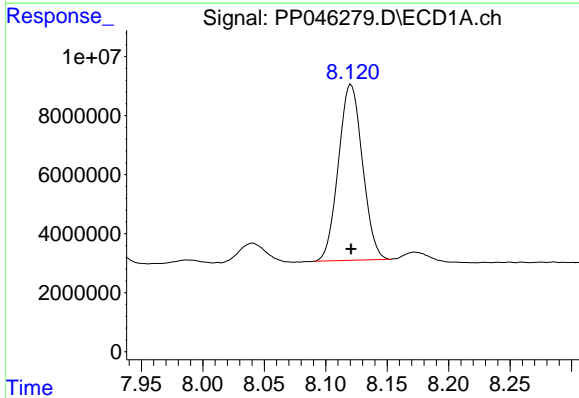
R.T.: 7.780 min
Delta R.T.: 0.000 min
Response: 40366353
Conc: 476.36 ng/ml

Instrument :
ECD_P
ClientSampleId :
AR1660CCC500



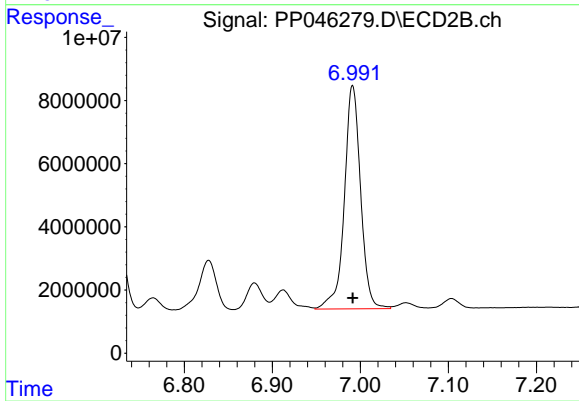
#34 AR-1260-4

R.T.: 6.724 min
Delta R.T.: 0.000 min
Response: 37891085
Conc: 527.68 ng/ml



#35 AR-1260-5

R.T.: 8.121 min
Delta R.T.: 0.000 min
Response: 81169039
Conc: 494.23 ng/ml



#35 AR-1260-5

R.T.: 6.991 min
Delta R.T.: 0.000 min
Response: 90898288
Conc: 535.12 ng/ml