

Data Path : Z:\pestpcbsrv\HPCHEM1\ECD_P\Data\PP042023\
 Data File : PP057050.D
 Signal(s) : Signal #1: ECD1A.ch Signal #2: ECD2B.ch
 Acq On : 20 Apr 2023 11:54
 Operator : YP\AJ
 Sample : AR1242ICC250
 Misc :
 ALS Vial : 13 Sample Multiplier: 1

Instrument :
 ECD_P
 ClientSampleId :
 AR1242ICC250

Integration File signal 1: autoint1.e
 Integration File signal 2: autoint2.e
 Quant Time: Apr 20 16:09:30 2023
 Quant Method : Z:\pestpcbsrv\HPCHEM1\ECD_P\methods\PP042023.M
 Quant Title : GC EXTRACTABLES
 QLast Update : Thu Apr 20 16:08:10 2023
 Response via : Initial Calibration
 Integrator: ChemStation

Volume Inj. : 2 µl
 Signal #1 Phase : ZB-MR1 Signal #2 Phase: ZB-MR2
 Signal #1 Info : 30Mx0.32mmx 0.50µ Signal #2 Info : 30M x 0.32mm x 0.25µm

Compound	RT#1	RT#2	Resp#1	Resp#2	ng/ml	ng/ml

System Monitoring Compounds						
1) SA Tetrachlo...	4.403	3.631	56376941	43344421	25.077	25.222
2) SA Decachlor...	10.215	8.686	41020553	47165376	26.077	26.478
Target Compounds						
16) L4 AR-1242-1	5.579	4.727	13603984	12599146	265.259	268.772
17) L4 AR-1242-2	5.601	4.746	19881580	17115990	265.754	261.160
18) L4 AR-1242-3	5.664	4.925	12722359	9459942	266.507	261.845
19) L4 AR-1242-4	5.762	5.009	10107966	10660618	266.997	267.451
20) L4 AR-1242-5	6.503	5.536	8995804	11909078	263.932	263.981

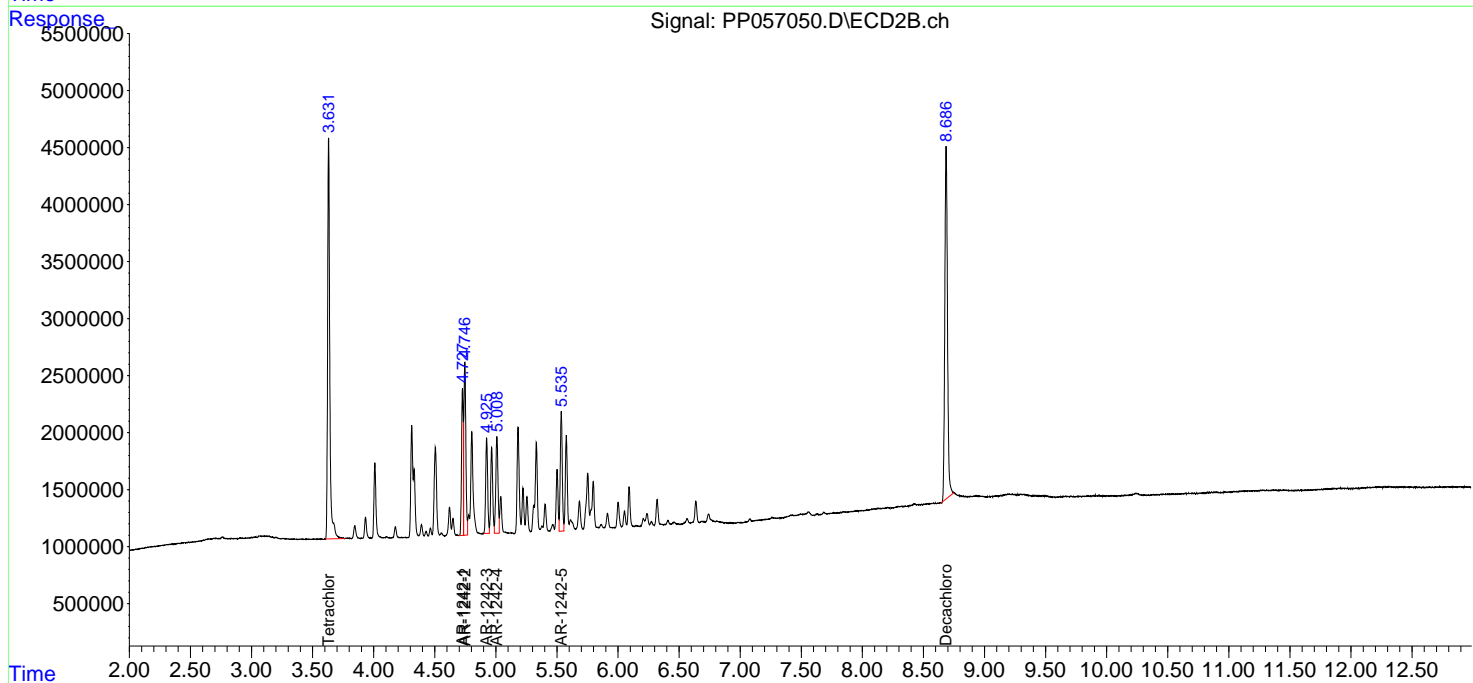
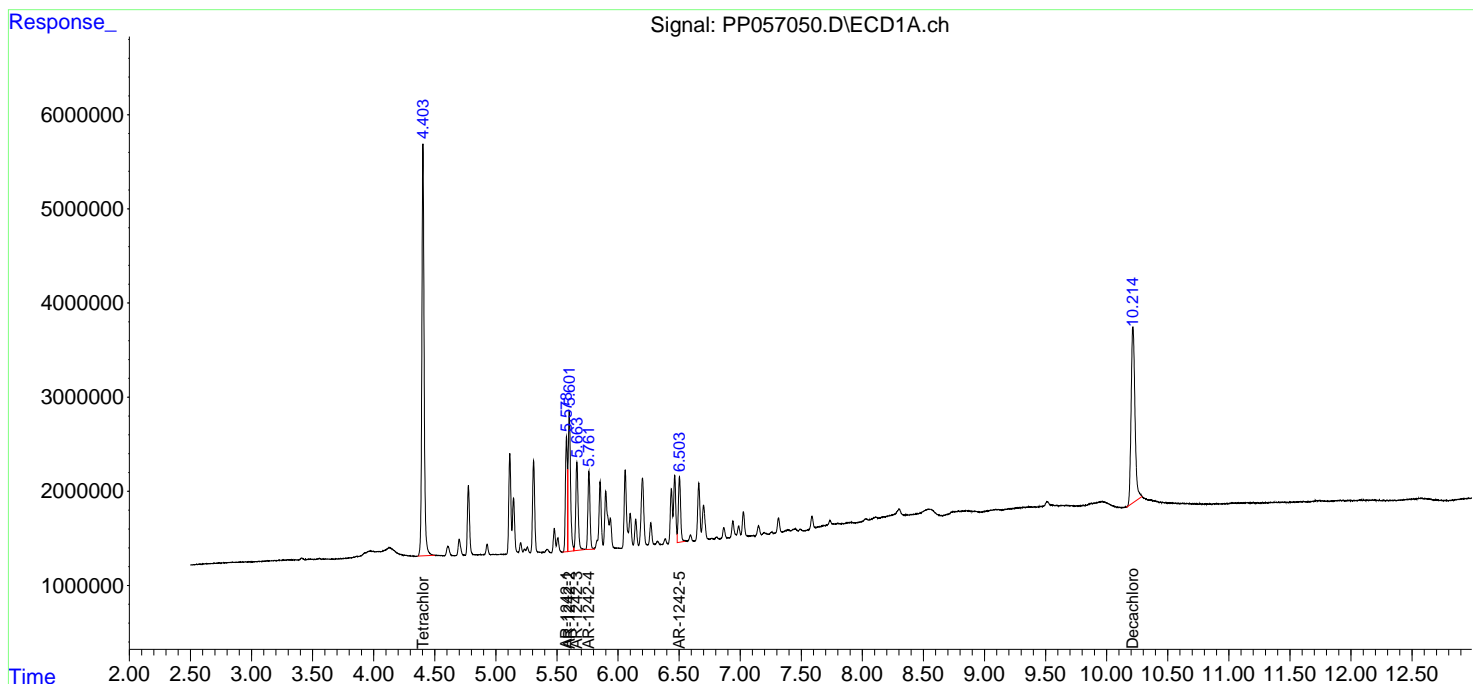
(f)=RT Delta > 1/2 Window (#)=Amounts differ by > 25% (m)=manual int.

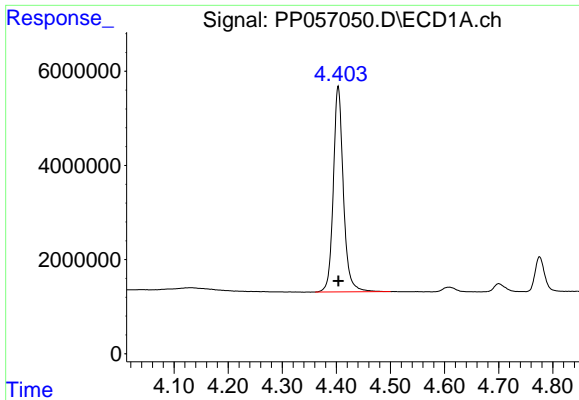
Data Path : Z:\pestpcbsrv\HPCHEM1\ECD_P\Data\PP042023\
 Data File : PP057050.D
 Signal(s) : Signal #1: ECD1A.ch Signal #2: ECD2B.ch
 Acq On : 20 Apr 2023 11:54
 Operator : YP\AJ
 Sample : AR1242ICC250
 Misc :
 ALS Vial : 13 Sample Multiplier: 1

Instrument :
 ECD_P
 ClientSampleId :
 AR1242ICC250

Integration File signal 1: autoint1.e
 Integration File signal 2: autoint2.e
 Quant Time: Apr 20 16:09:30 2023
 Quant Method : Z:\pestpcbsrv\HPCHEM1\ECD_P\methods\PP042023.M
 Quant Title : GC EXTRACTABLES
 QLast Update : Thu Apr 20 16:08:10 2023
 Response via : Initial Calibration
 Integrator: ChemStation

Volume Inj. : 2 µl
 Signal #1 Phase : ZB-MR1 Signal #2 Phase: ZB-MR2
 Signal #1 Info : 30Mx0.32mmx 0.50µ Signal #2 Info : 30M x 0.32mm x 0.25µm

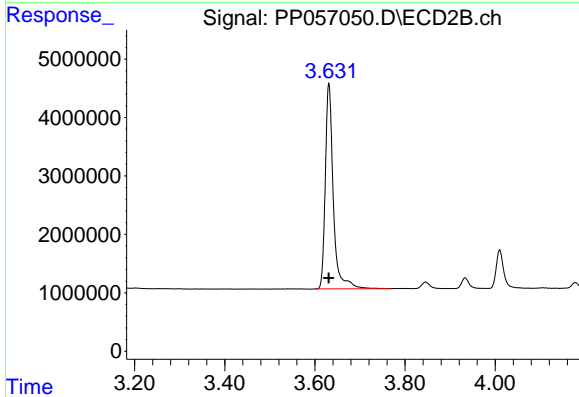




#1 Tetrachloro-m-xylene

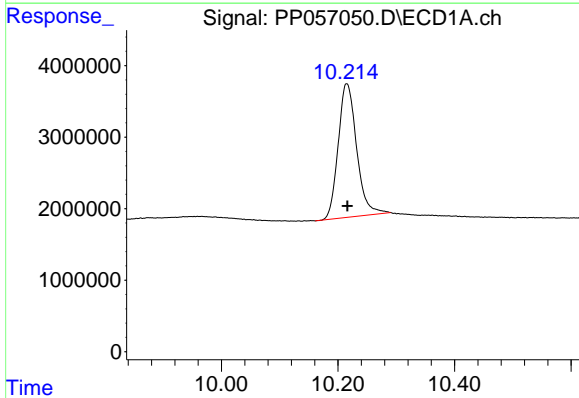
R.T.: 4.403 min
 Delta R.T.: 0.000 min
 Response: 56376941
 Conc: 25.08 ng/ml

Instrument :
 ECD_P
 ClientSampleId :
 AR1242ICC250



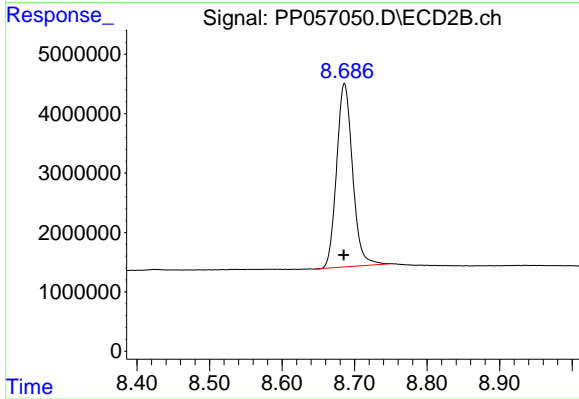
#1 Tetrachloro-m-xylene

R.T.: 3.631 min
 Delta R.T.: 0.000 min
 Response: 43344421
 Conc: 25.22 ng/ml



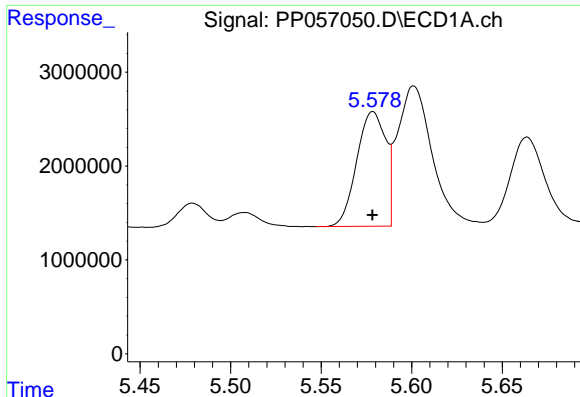
#2 Decachlorobiphenyl

R.T.: 10.215 min
 Delta R.T.: -0.001 min
 Response: 41020553
 Conc: 26.08 ng/ml



#2 Decachlorobiphenyl

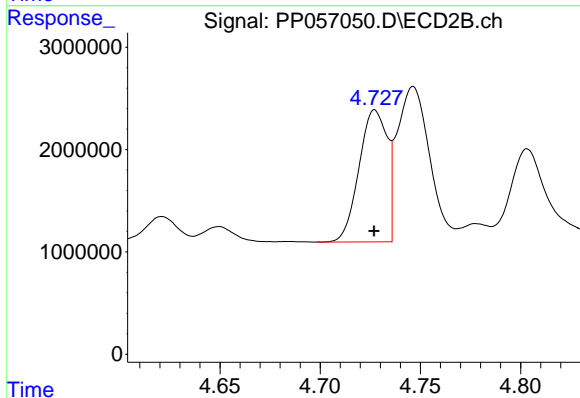
R.T.: 8.686 min
 Delta R.T.: 0.000 min
 Response: 47165376
 Conc: 26.48 ng/ml



#16 AR-1242-1

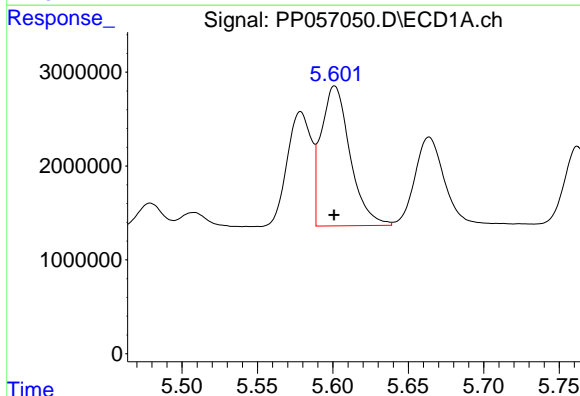
R.T.: 5.579 min
 Delta R.T.: 0.000 min
 Response: 13603984
 Conc: 265.26 ng/ml

Instrument :
 ECD_P
 ClientSampleId :
 AR1242ICC250



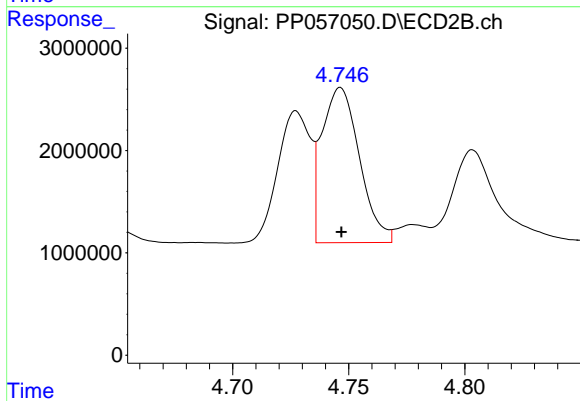
#16 AR-1242-1

R.T.: 4.727 min
 Delta R.T.: 0.000 min
 Response: 12599146
 Conc: 268.77 ng/ml



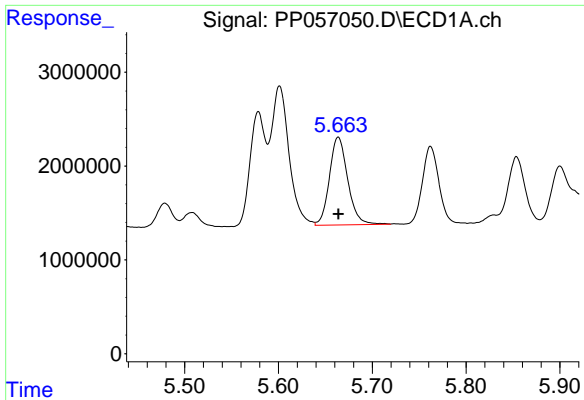
#17 AR-1242-2

R.T.: 5.601 min
 Delta R.T.: 0.000 min
 Response: 19881580
 Conc: 265.75 ng/ml



#17 AR-1242-2

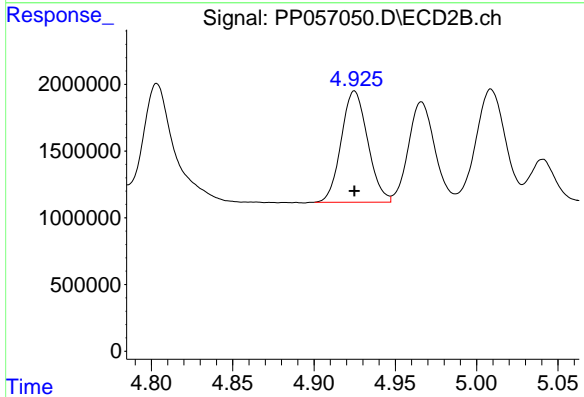
R.T.: 4.746 min
 Delta R.T.: 0.000 min
 Response: 17115990
 Conc: 261.16 ng/ml



#18 AR-1242-3

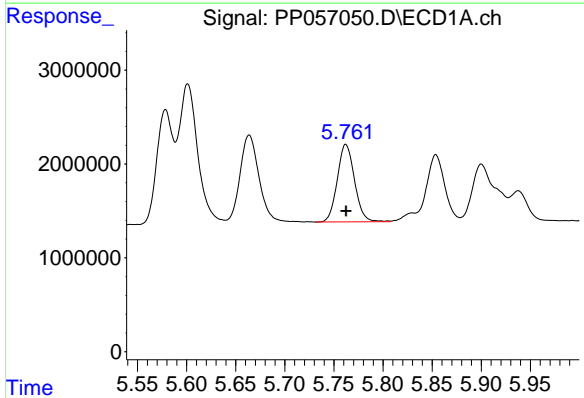
R.T.: 5.664 min
 Delta R.T.: 0.000 min
 Response: 12722359
 Conc: 266.51 ng/ml

Instrument :
 ECD_P
 ClientSampleId :
 AR1242ICC250



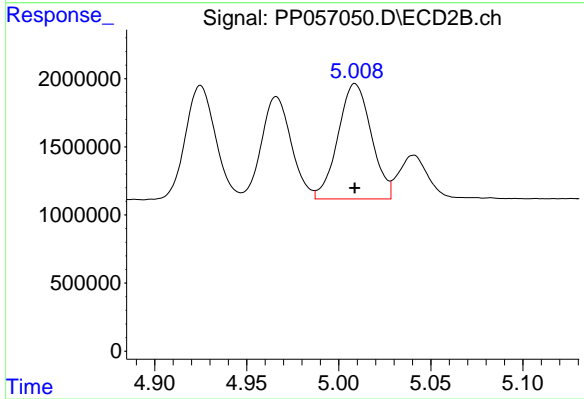
#18 AR-1242-3

R.T.: 4.925 min
 Delta R.T.: 0.000 min
 Response: 9459942
 Conc: 261.84 ng/ml



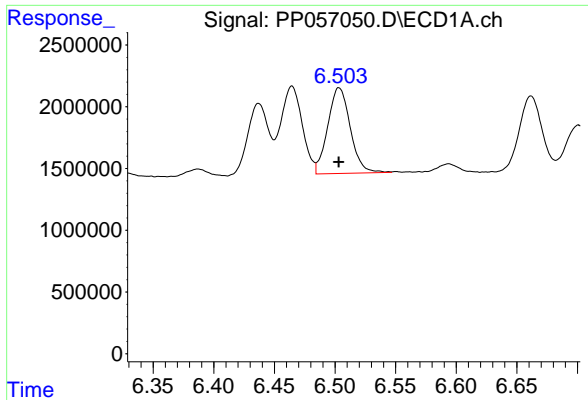
#19 AR-1242-4

R.T.: 5.762 min
 Delta R.T.: 0.000 min
 Response: 10107966
 Conc: 267.00 ng/ml



#19 AR-1242-4

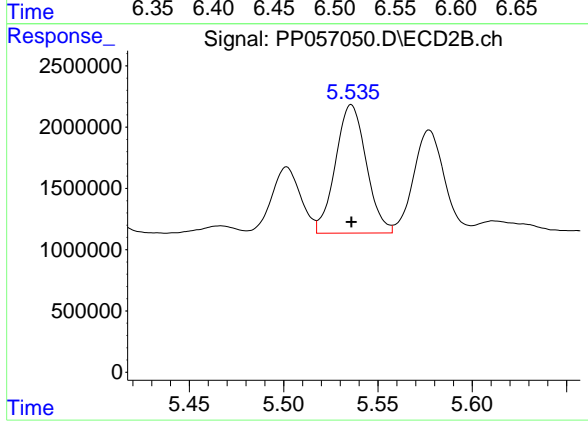
R.T.: 5.009 min
 Delta R.T.: 0.000 min
 Response: 10660618
 Conc: 267.45 ng/ml



#20 AR-1242-5

R.T.: 6.503 min
Delta R.T.: 0.000 min
Response: 8995804
Conc: 263.93 ng/ml

Instrument :
ECD_P
ClientSampleId :
AR1242ICC250



#20 AR-1242-5

R.T.: 5.536 min
Delta R.T.: 0.000 min
Response: 11909078
Conc: 263.98 ng/ml