

Data Path : Z:\pestpcbsrv\HPCHEM1\ECD_P\Data\PP042023\
 Data File : PP057058.D
 Signal(s) : Signal #1: ECD1A.ch Signal #2: ECD2B.ch
 Acq On : 20 Apr 2023 14:08
 Operator : YP\AJ
 Sample : AR1254ICC750
 Misc :
 ALS Vial : 21 Sample Multiplier: 1

Instrument :
 ECD_P
ClientSampleId :
 AR1254ICC750

Integration File signal 1: autoint1.e
 Integration File signal 2: autoint2.e
 Quant Time: Apr 20 16:15:33 2023
 Quant Method : Z:\pestpcbsrv\HPCHEM1\ECD_P\methods\PP042023.M
 Quant Title : GC EXTRACTABLES
 QLast Update : Thu Apr 20 16:14:39 2023
 Response via : Initial Calibration
 Integrator: ChemStation

Volume Inj. : 2 µl
 Signal #1 Phase : ZB-MR1 Signal #2 Phase: ZB-MR2
 Signal #1 Info : 30Mx0.32mmx 0.50µ Signal #2 Info : 30M x 0.32mm x 0.25µm

Compound	RT#1	RT#2	Resp#1	Resp#2	ng/ml	ng/ml

System Monitoring Compounds						
1) SA Tetrachlo...	4.403	3.631	165.9E6	124.8E6	73.732	73.092
2) SA Decachlor...	10.219	8.687	114.1E6	131.3E6	71.698	71.534
Target Compounds						
26) L6 AR-1254-1	6.439	5.537	54127299	72988202	716.115	716.858
27) L6 AR-1254-2	6.660	5.685	77623284	64163459	711.865	710.813
28) L6 AR-1254-3	7.028	6.092	75308009	102.6E6	714.158	720.688
29) L6 AR-1254-4	7.314	6.321	44797874	55195235	711.780	715.793
30) L6 AR-1254-5	7.736	6.742	52629316	88406518	713.590	715.395

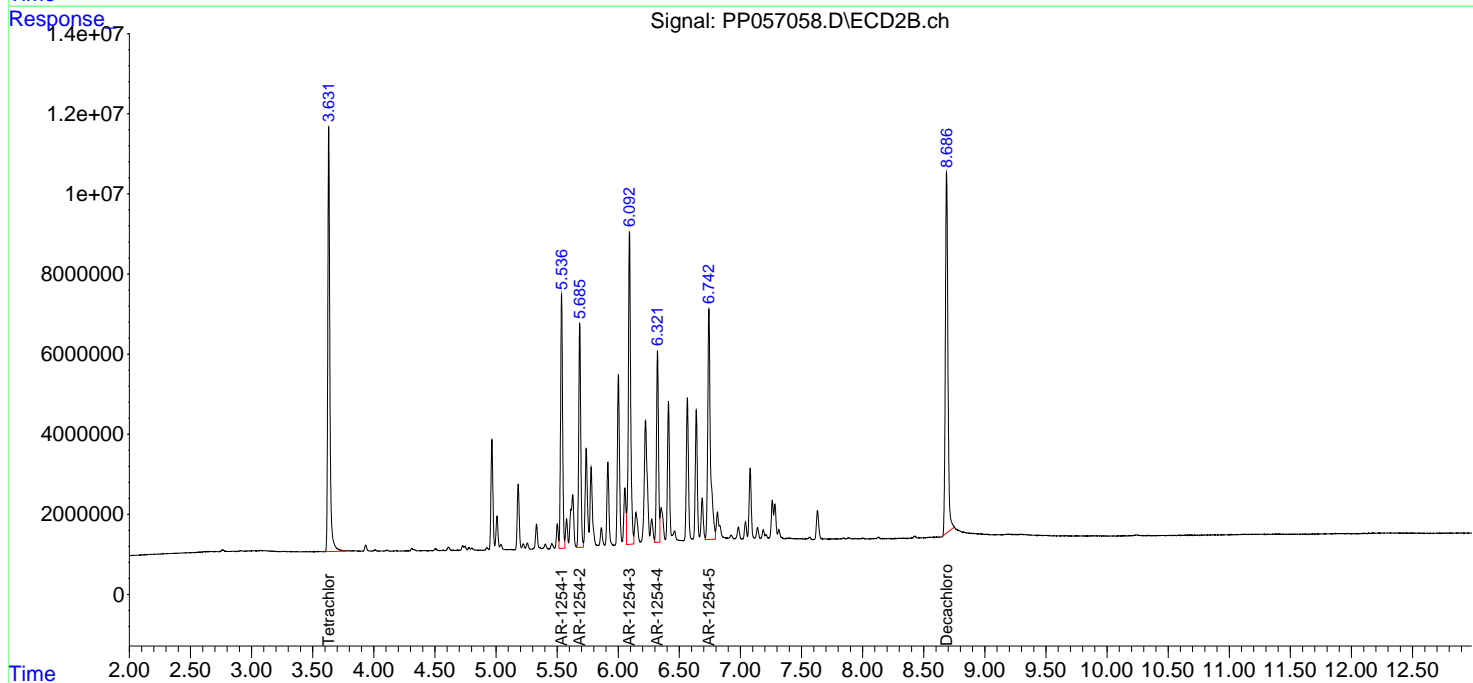
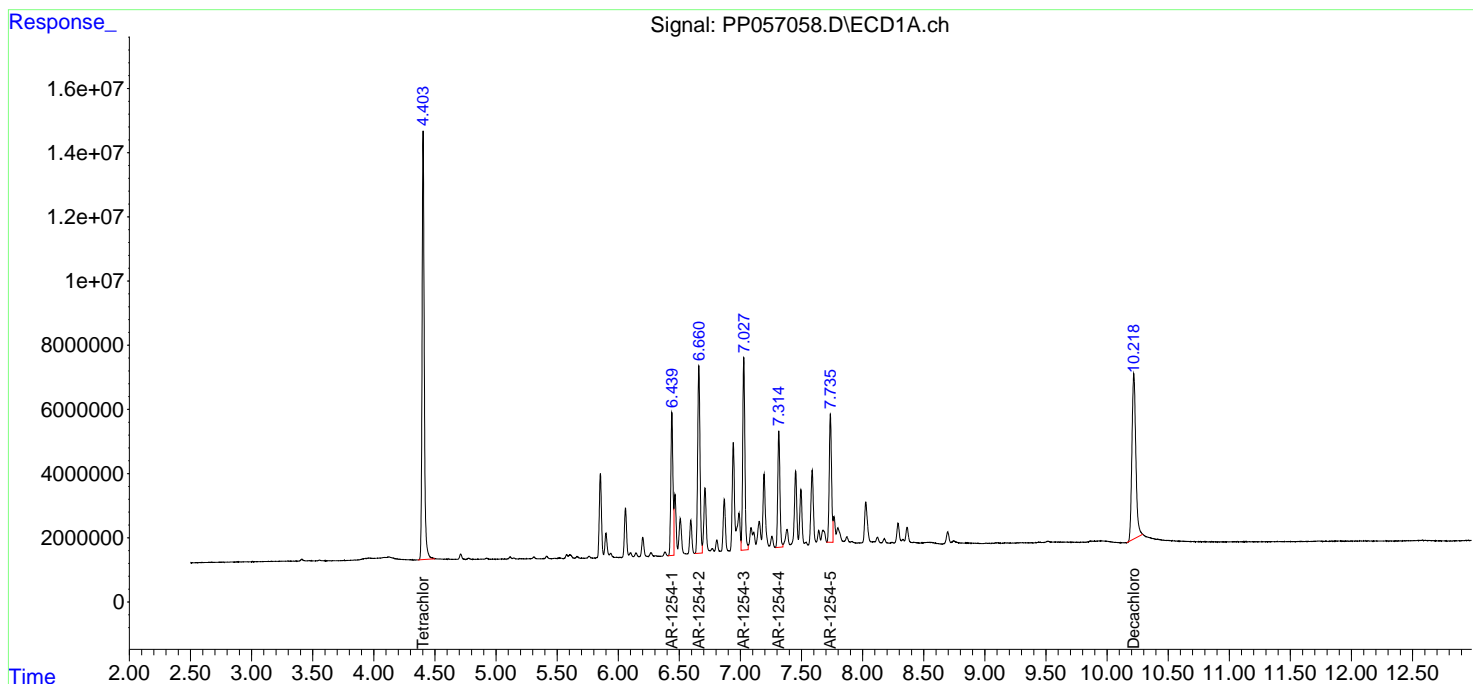
(f)=RT Delta > 1/2 Window (#)=Amounts differ by > 25% (m)=manual int.

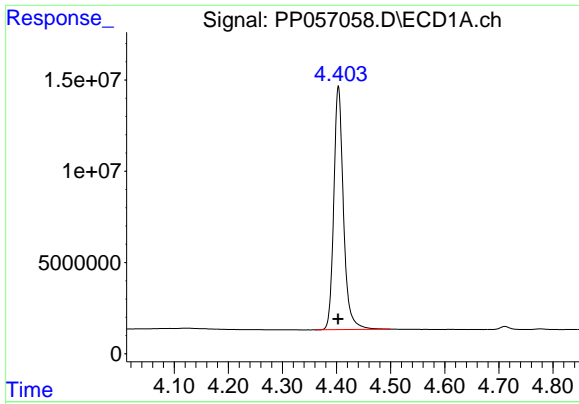
Data Path : Z:\pestpcbsrv\HPCHEM1\ECD_P\Data\PP042023\
 Data File : PP057058.D
 Signal(s) : Signal #1: ECD1A.ch Signal #2: ECD2B.ch
 Acq On : 20 Apr 2023 14:08
 Operator : YP\AJ
 Sample : AR1254ICC750
 Misc :
 ALS Vial : 21 Sample Multiplier: 1

Instrument :
 ECD_P
 ClientSampleId :
 AR1254ICC750

Integration File signal 1: autoint1.e
 Integration File signal 2: autoint2.e
 Quant Time: Apr 20 16:15:33 2023
 Quant Method : Z:\pestpcbsrv\HPCHEM1\ECD_P\methods\PP042023.M
 Quant Title : GC EXTRACTABLES
 QLast Update : Thu Apr 20 16:14:39 2023
 Response via : Initial Calibration
 Integrator: ChemStation

Volume Inj. : 2 µl
 Signal #1 Phase : ZB-MR1 Signal #2 Phase: ZB-MR2
 Signal #1 Info : 30Mx0.32mmx 0.50µ Signal #2 Info : 30M x 0.32mm x 0.25µm

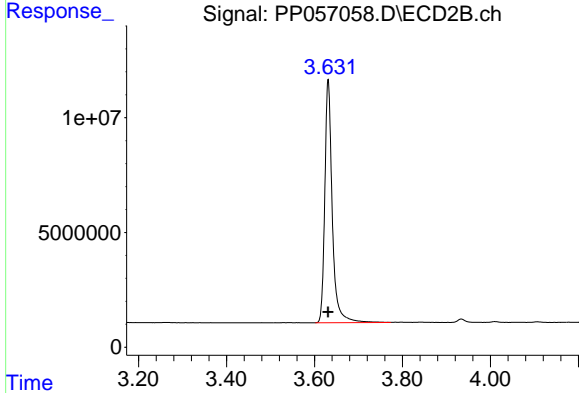




#1 Tetrachloro-m-xylene

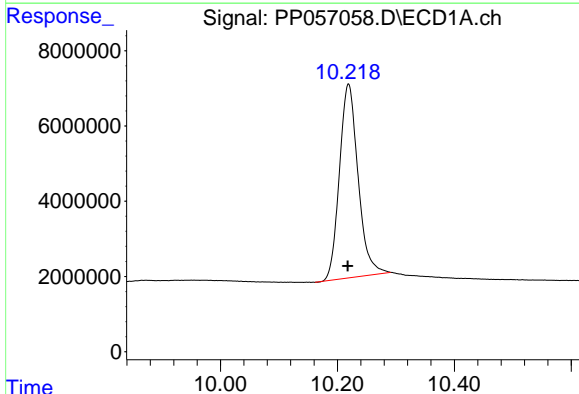
R.T.: 4.403 min
 Delta R.T.: 0.000 min
 Response: 165860898
 Conc: 73.73 ng/ml

Instrument :
 ECD_P
 ClientSampleId :
 AR1254ICC750



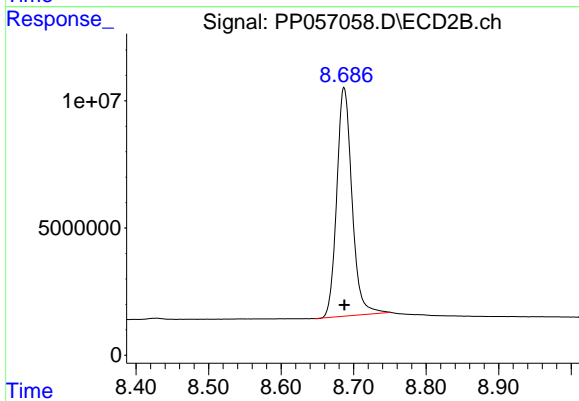
#1 Tetrachloro-m-xylene

R.T.: 3.631 min
 Delta R.T.: 0.000 min
 Response: 124817181
 Conc: 73.09 ng/ml



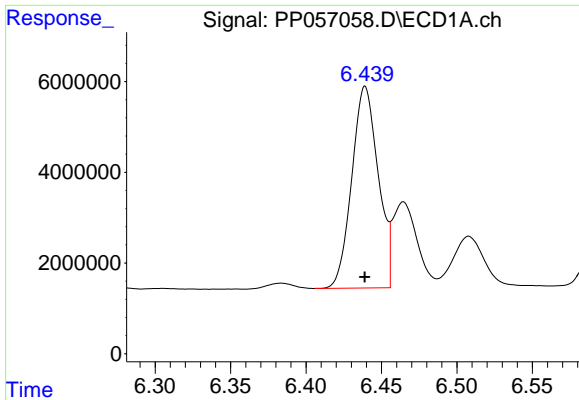
#2 Decachlorobiphenyl

R.T.: 10.219 min
 Delta R.T.: 0.001 min
 Response: 114113861
 Conc: 71.70 ng/ml



#2 Decachlorobiphenyl

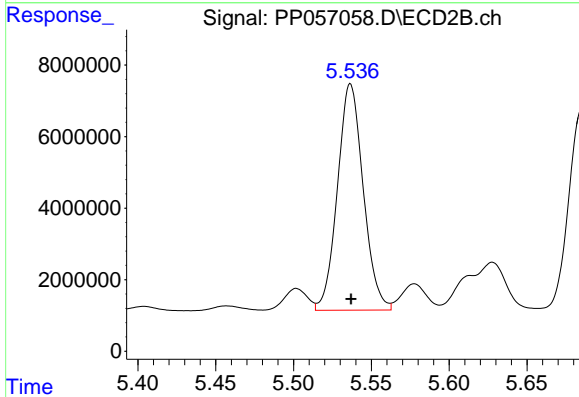
R.T.: 8.687 min
 Delta R.T.: 0.000 min
 Response: 131293453
 Conc: 71.53 ng/ml



#26 AR-1254-1

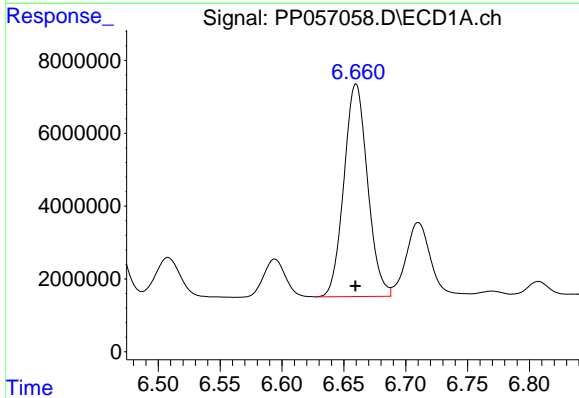
R.T.: 6.439 min
Delta R.T.: 0.000 min
Response: 54127299
Conc: 716.11 ng/ml

Instrument :
ECD_P
ClientSampleId :
AR1254ICC750



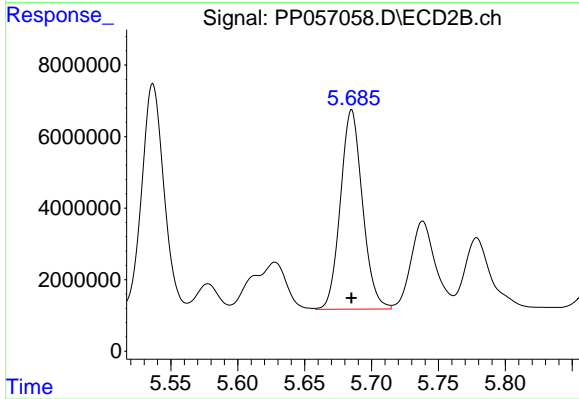
#26 AR-1254-1

R.T.: 5.537 min
Delta R.T.: 0.000 min
Response: 72988202
Conc: 716.86 ng/ml



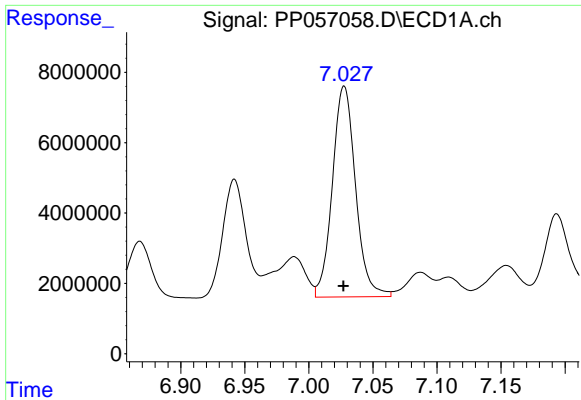
#27 AR-1254-2

R.T.: 6.660 min
Delta R.T.: 0.000 min
Response: 77623284
Conc: 711.87 ng/ml



#27 AR-1254-2

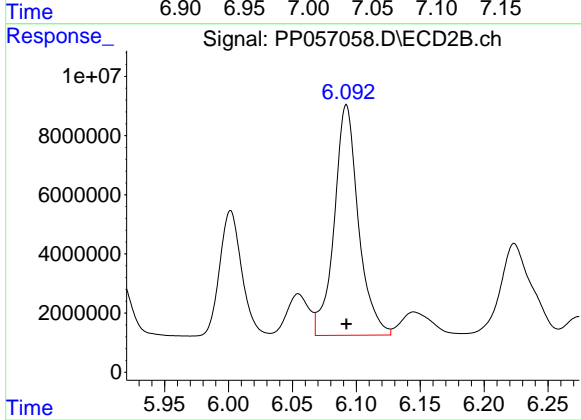
R.T.: 5.685 min
Delta R.T.: 0.000 min
Response: 64163459
Conc: 710.81 ng/ml



#28 AR-1254-3

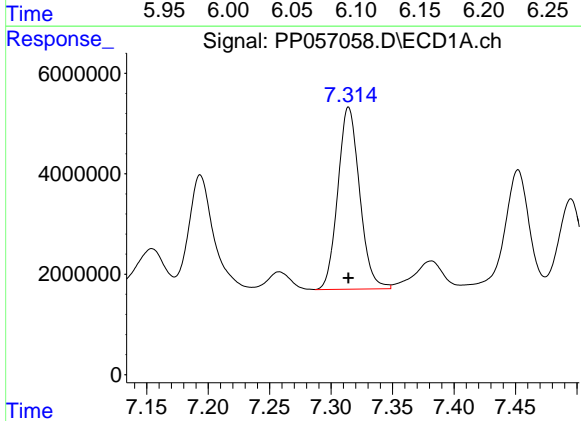
R.T.: 7.028 min
 Delta R.T.: 0.000 min
 Response: 75308009
 Conc: 714.16 ng/ml

Instrument :
 ECD_P
 ClientSampleId :
 AR1254ICC750



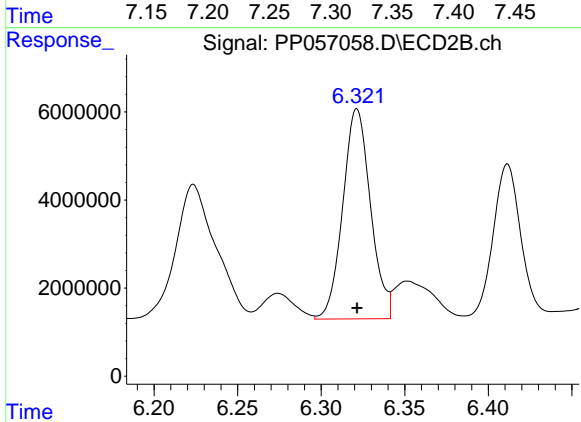
#28 AR-1254-3

R.T.: 6.092 min
 Delta R.T.: 0.000 min
 Response: 102553924
 Conc: 720.69 ng/ml



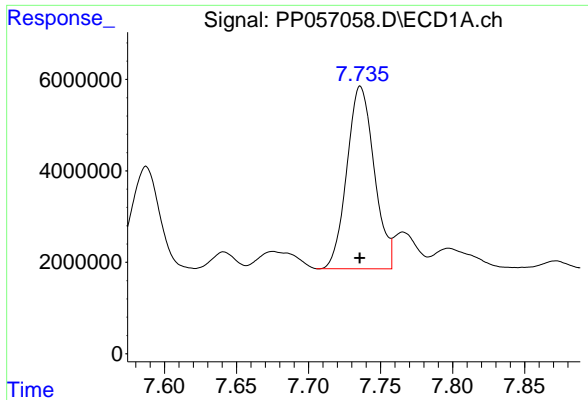
#29 AR-1254-4

R.T.: 7.314 min
 Delta R.T.: 0.000 min
 Response: 44797874
 Conc: 711.78 ng/ml



#29 AR-1254-4

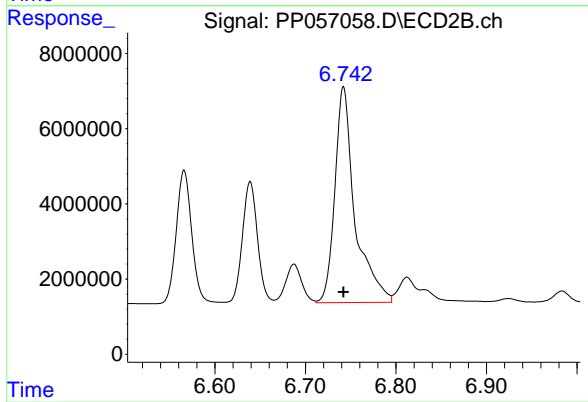
R.T.: 6.321 min
 Delta R.T.: 0.000 min
 Response: 55195235
 Conc: 715.79 ng/ml



#30 AR-1254-5

R.T.: 7.736 min
Delta R.T.: 0.000 min
Response: 52629316
Conc: 713.59 ng/ml

Instrument :
ECD_P
ClientSampleId :
AR1254ICC750



#30 AR-1254-5

R.T.: 6.742 min
Delta R.T.: 0.000 min
Response: 88406518
Conc: 715.40 ng/ml