

Data Path : Z:\pestpcbsrv\HPCHEM1\ECD_P\Data\PP042023\
 Data File : PP057113.D
 Signal(s) : Signal #1: ECD1A.ch Signal #2: ECD2B.ch
 Acq On : 21 Apr 2023 06:24
 Operator : YP\AJ
 Sample : 02407-01
 Misc :
 ALS Vial : 61 Sample Multiplier: 1

Instrument :
 ECD_P
 ClientSampleId :

Integration File signal 1: autoint1.e
 Integration File signal 2: autoint2.e
 Quant Time: Apr 21 07:10:59 2023
 Quant Method : Z:\pestpcbsrv\HPCHEM1\ECD_P\methods\PP042023.M
 Quant Title : GC EXTRACTABLES
 QLast Update : Thu Apr 20 16:59:40 2023
 Response via : Initial Calibration
 Integrator: ChemStation

Volume Inj. : 2 µl
 Signal #1 Phase : ZB-MR1 Signal #2 Phase: ZB-MR2
 Signal #1 Info : 30Mx0.32mmx 0.50µ Signal #2 Info : 30M x 0.32mm x 0.25µm

Compound	RT#1	RT#2	Resp#1	Resp#2	ng/ml	ng/ml

System Monitoring Compounds						
1) SA Tetrachlo...	4.404	3.631	37551772	35508311	16.976	21.019
2) SA Decachlor...	10.218	8.687	30462604	28337715	18.982	15.840
Target Compounds						
3) L1 AR-1016-1	5.576	4.738	341779	393758	5.448	6.932 #
4) L1 AR-1016-2	5.602	4.738	803270	393758	8.803	4.914 #
5) L1 AR-1016-3	5.649	4.920	375204	802801	6.506	18.482 #
6) L1 AR-1016-4	5.768	4.989f	20127	1097237	0.443	28.276 #
7) L1 AR-1016-5	6.061	5.174	307091	6336919	6.373	126.387 #
8) L2 AR-1221-1	4.611	3.853	910104	555574	34.093	26.030
9) L2 AR-1221-2	4.712	3.921	699797	1302408	35.957	80.990 #
10) L2 AR-1221-3	0.000	4.013	0	93232	N.D.	1.897 #
11) L3 AR-1232-1	0.000	4.013	0	93232	N.D.	2.321 #
12) L3 AR-1232-2	5.315	4.738	720593	393758	29.011	10.885 #
13) L3 AR-1232-3	5.602	4.920	803270	802801	19.312	41.768 #
14) L3 AR-1232-4	5.768	5.012	20127	1009844	0.974	50.965 #
15) L3 AR-1232-5	5.853	5.174	248554	6336919	13.147	285.547 #
16) L4 AR-1242-1	5.576	4.738	341779	393758	6.677	8.415 #
17) L4 AR-1242-2	5.602	4.738	803270	393758	10.724	6.062 #
18) L4 AR-1242-3	5.649	4.920	375204	802801	7.965	22.603 #
19) L4 AR-1242-4	5.768	5.012	20127	1009844	0.540	25.397 #
20) L4 AR-1242-5	6.510	5.562f	786701	8232776	23.356	184.027 #
21) L5 AR-1248-1	5.576	4.738	341779	393758	8.890	11.163 #
22) L5 AR-1248-2	5.853	4.989f	248554	1097237	3.944	19.766 #
23) L5 AR-1248-3	6.061	5.012	307091	1009844	4.600	17.442 #
24) L5 AR-1248-4	6.439f	5.174	4263452	6336919	72.028	93.337 #
25) L5 AR-1248-5	6.510	5.562f	786701	8232776	13.552	141.678 #
26) L6 AR-1254-1	6.439	5.562f	4263452	8232776	56.454	81.696 #
27) L6 AR-1254-2	6.657	5.680	307433	1474890	2.835	16.506 #
28) L6 AR-1254-3	7.028	6.108f	1572106	3652337	15.187	26.069 #
29) L6 AR-1254-4	7.313	6.321	562447	699528	9.053	9.285
30) L6 AR-1254-5	7.736	6.740	729896	970346	10.133	7.883
31) L7 AR-1260-1	7.196	6.223	1579116	2455543	18.131	24.232 #
32) L7 AR-1260-2	7.444	6.396	1161290	1377179	12.646	11.848
33) L7 AR-1260-3	7.814	6.568	468325	765290	6.454	6.918
34) L7 AR-1260-4	8.040	7.040	679007	527244	8.080	5.756 #
35) L7 AR-1260-5	8.364	7.283	864972	913247	6.027	5.060
36) L8 AR-1262-1	7.814	6.833	468325	423204	4.640	7.414 #
37) L8 AR-1262-2	8.364	7.040	864972	527244	5.914	4.538
38) L8 AR-1262-3	8.696	7.566	758902	854965	7.074	9.434 #
39) L8 AR-1262-4	8.773	7.631	685800	788771	8.205	5.019 #
40) L8 AR-1262-5	9.444	8.129	82717	236012	1.726	3.452 #
41) L9 AR-1268-1	8.696f	7.566	758902	854965	3.598	3.078

Data Path : Z:\pestpcbsrv\HPCHEM1\ECD_P\Data\PP042023\
 Data File : PP057113.D
 Signal(s) : Signal #1: ECD1A.ch Signal #2: ECD2B.ch
 Acq On : 21 Apr 2023 06:24
 Operator : YP\AJ
 Sample : 02407-01
 Misc :
 ALS Vial : 61 Sample Multiplier: 1

Instrument :
 ECD_P
 ClientSampleId :

Integration File signal 1: autoint1.e
 Integration File signal 2: autoint2.e
 Quant Time: Apr 21 07:10:59 2023
 Quant Method : Z:\pestpcbsrv\HPCHEM1\ECD_P\methods\PP042023.M
 Quant Title : GC EXTRACTABLES
 QLast Update : Thu Apr 20 16:59:40 2023
 Response via : Initial Calibration
 Integrator: ChemStation

Volume Inj. : 2 µl
 Signal #1 Phase : ZB-MR1 Signal #2 Phase: ZB-MR2
 Signal #1 Info : 30Mx0.32mmx 0.50µ Signal #2 Info : 30M x 0.32mm x 0.25µm

	Compound	RT#1	RT#2	Resp#1	Resp#2	ng/ml	ng/ml
42)	L9 AR-1268-2	8.773	7.631	685800	788771	3.829	3.163
43)	L9 AR-1268-3	8.996f	7.842	71064	115579	0.402	0.522 #
44)	L9 AR-1268-4	9.444	8.129	82717	236012	1.459	2.950 #
45)	L9 AR-1268-5	9.882	8.425	64432	182894	0.136	0.309 #

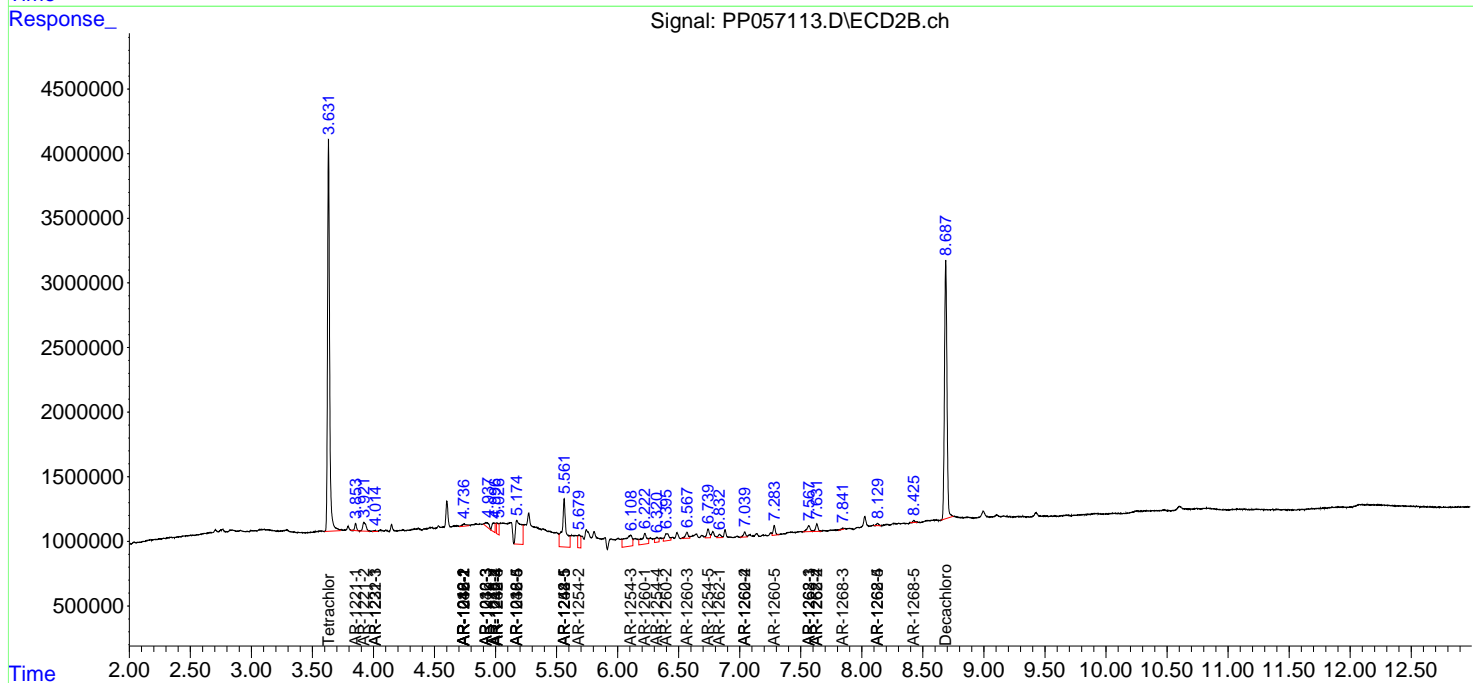
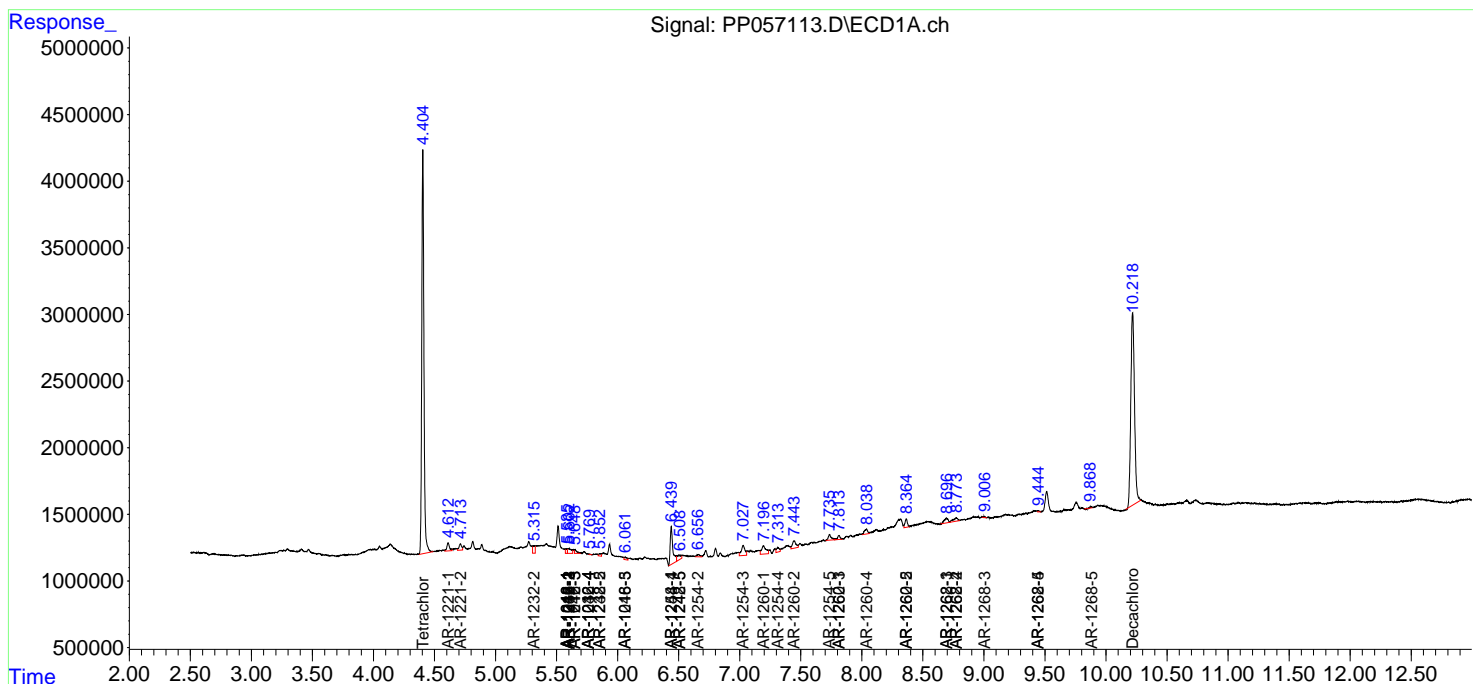
(f)=RT Delta > 1/2 Window (#)=Amounts differ by > 25% (m)=manual int.

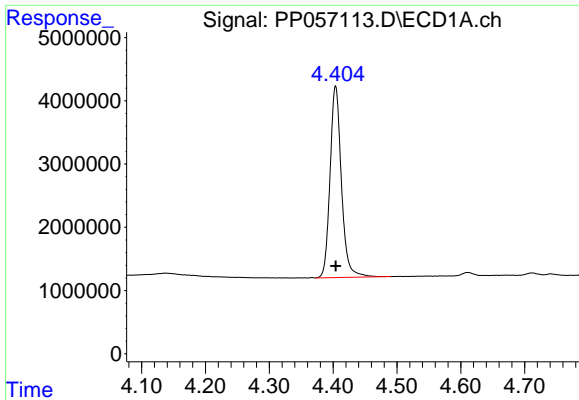
Data Path : Z:\pestpcbsrv\HPCHEM1\ECD_P\Data\PP042023\
 Data File : PP057113.D
 Signal(s) : Signal #1: ECD1A.ch Signal #2: ECD2B.ch
 Acq On : 21 Apr 2023 06:24
 Operator : YP\AJ
 Sample : 02407-01
 Misc :
 ALS Vial : 61 Sample Multiplier: 1

Instrument :
 ECD_P
 ClientSampleId :

Integration File signal 1: autoint1.e
 Integration File signal 2: autoint2.e
 Quant Time: Apr 21 07:10:59 2023
 Quant Method : Z:\pestpcbsrv\HPCHEM1\ECD_P\methods\PP042023.M
 Quant Title : GC EXTRACTABLES
 QLast Update : Thu Apr 20 16:59:40 2023
 Response via : Initial Calibration
 Integrator: ChemStation

Volume Inj. : 2 µl
 Signal #1 Phase : ZB-MR1 Signal #2 Phase: ZB-MR2
 Signal #1 Info : 30Mx0.32mmx 0.50µ Signal #2 Info : 30M x 0.32mm x 0.25µm

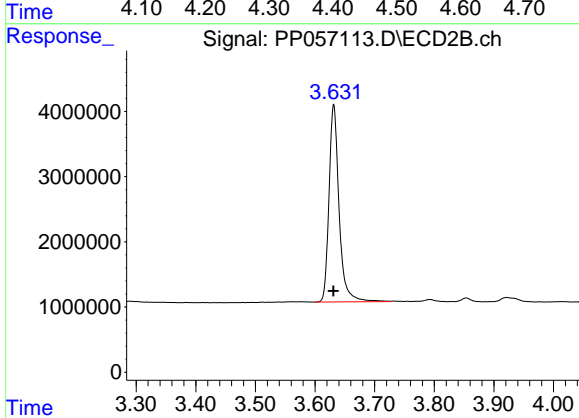




#1 Tetrachloro-m-xylene

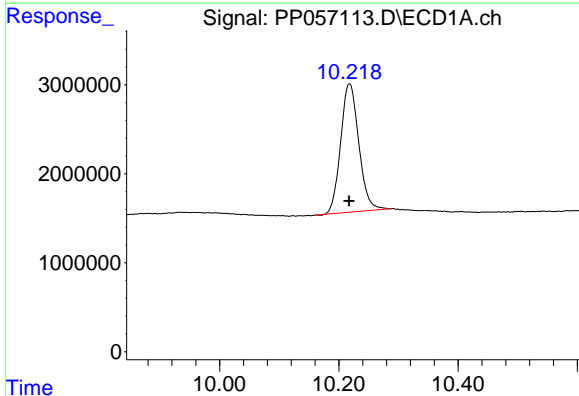
R.T.: 4.404 min
 Delta R.T.: 0.000 min
 Response: 37551772
 Conc: 16.98 ng/ml

Instrument :
 ECD_P
 ClientSampleId :



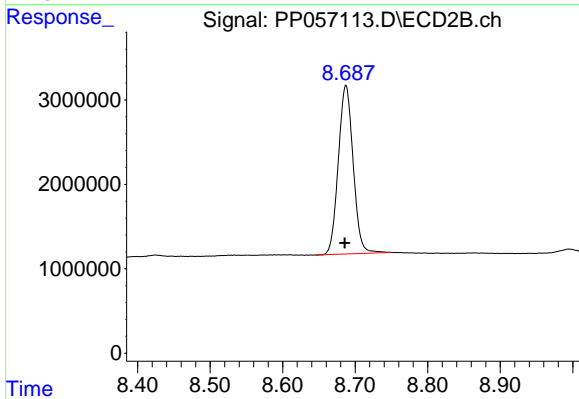
#1 Tetrachloro-m-xylene

R.T.: 3.631 min
 Delta R.T.: 0.000 min
 Response: 35508311
 Conc: 21.02 ng/ml



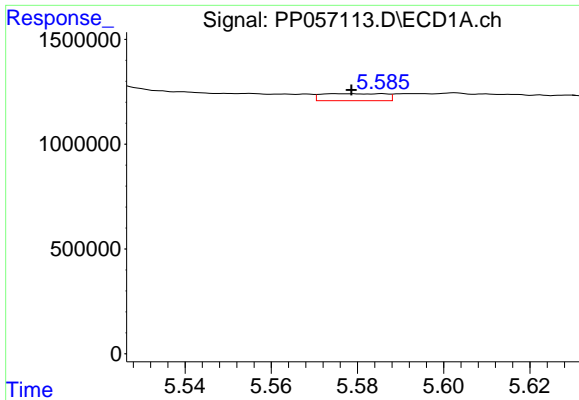
#2 Decachlorobiphenyl

R.T.: 10.218 min
 Delta R.T.: 0.000 min
 Response: 30462604
 Conc: 18.98 ng/ml



#2 Decachlorobiphenyl

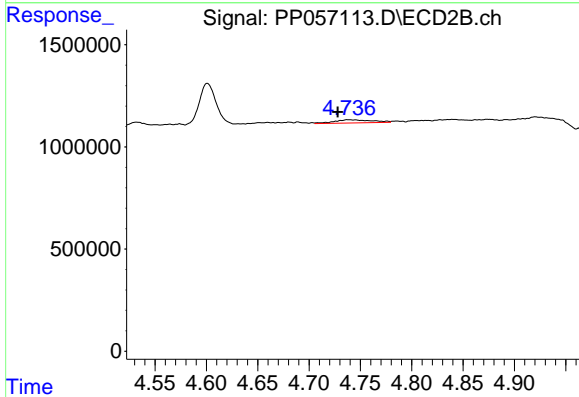
R.T.: 8.687 min
 Delta R.T.: 0.002 min
 Response: 28337715
 Conc: 15.84 ng/ml



#3 AR-1016-1

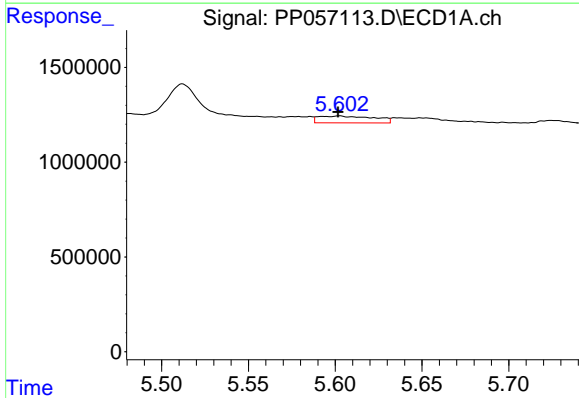
R.T.: 5.576 min
 Delta R.T.: -0.003 min
 Response: 341779
 Conc: 5.45 ng/ml

Instrument :
 ECD_P
 ClientSampleId :



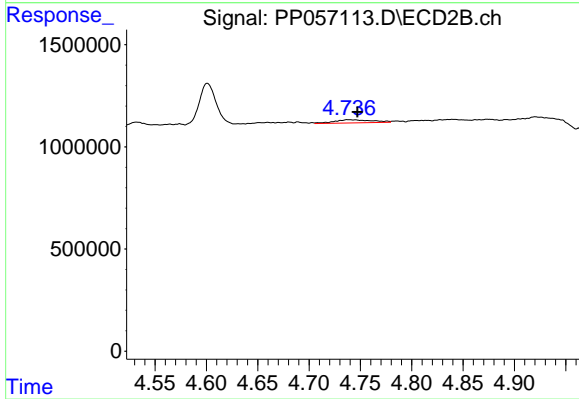
#3 AR-1016-1

R.T.: 4.738 min
 Delta R.T.: 0.010 min
 Response: 393758
 Conc: 6.93 ng/ml



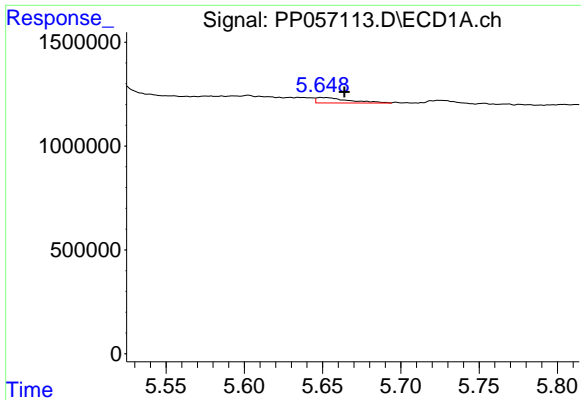
#4 AR-1016-2

R.T.: 5.602 min
 Delta R.T.: 0.000 min
 Response: 803270
 Conc: 8.80 ng/ml



#4 AR-1016-2

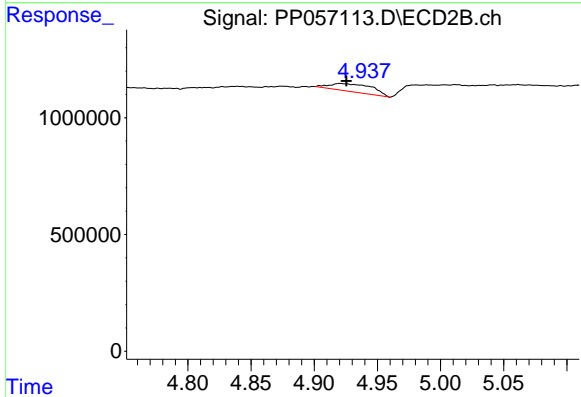
R.T.: 4.738 min
 Delta R.T.: -0.009 min
 Response: 393758
 Conc: 4.91 ng/ml



#5 AR-1016-3

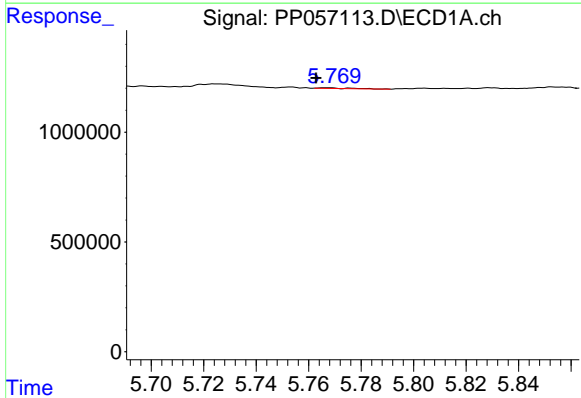
R.T.: 5.649 min
 Delta R.T.: -0.015 min
 Response: 375204
 Conc: 6.51 ng/ml

Instrument :
 ECD_P
 ClientSampleId :



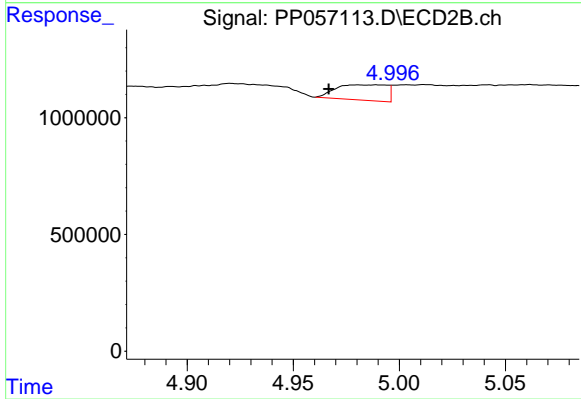
#5 AR-1016-3

R.T.: 4.920 min
 Delta R.T.: -0.005 min
 Response: 802801
 Conc: 18.48 ng/ml



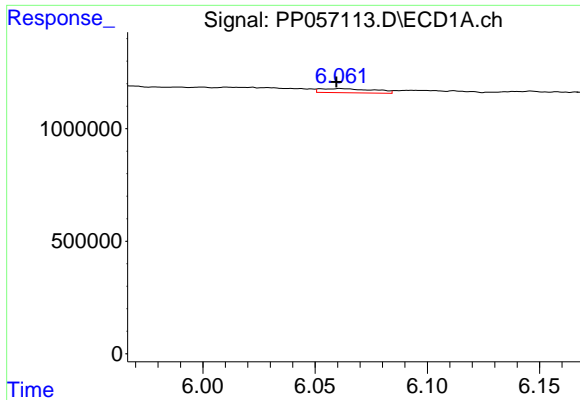
#6 AR-1016-4

R.T.: 5.768 min
 Delta R.T.: 0.005 min
 Response: 20127
 Conc: 0.44 ng/ml



#6 AR-1016-4

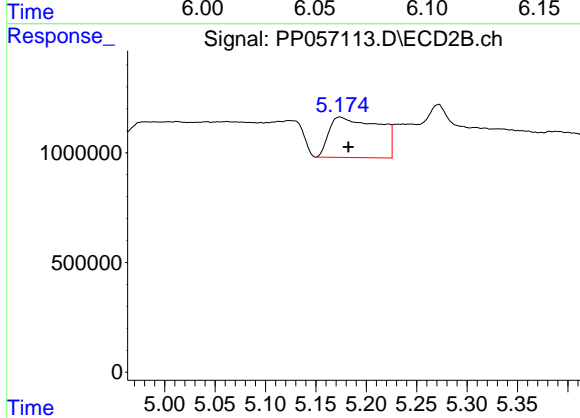
R.T.: 4.989 min
 Delta R.T.: 0.023 min
 Response: 1097237
 Conc: 28.28 ng/ml



#7 AR-1016-5

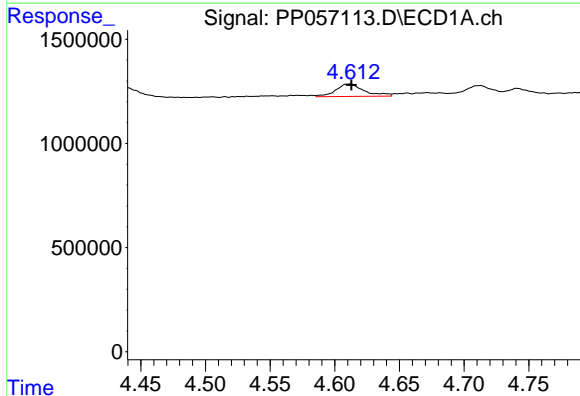
R.T.: 6.061 min
 Delta R.T.: 0.002 min
 Response: 307091
 Conc: 6.37 ng/ml

Instrument :
 ECD_P
 ClientSampleId :



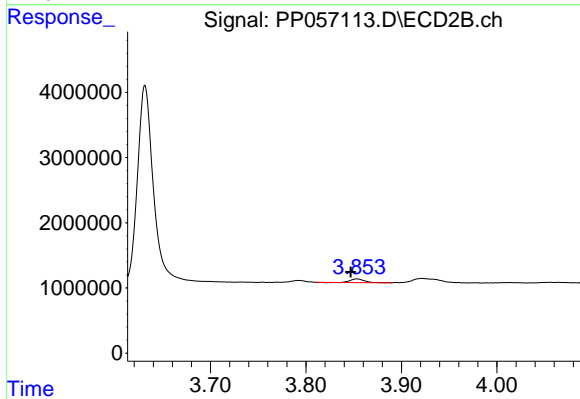
#7 AR-1016-5

R.T.: 5.174 min
 Delta R.T.: -0.008 min
 Response: 6336919
 Conc: 126.39 ng/ml



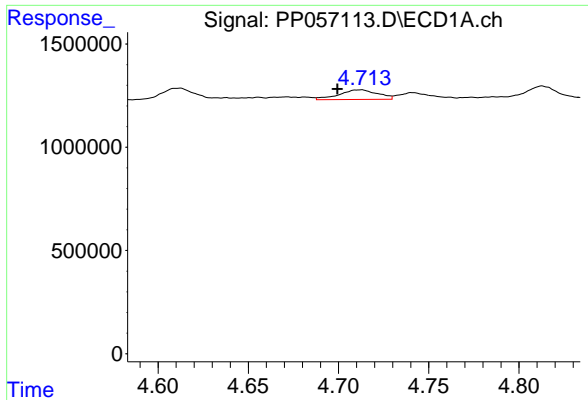
#8 AR-1221-1

R.T.: 4.611 min
 Delta R.T.: -0.001 min
 Response: 910104
 Conc: 34.09 ng/ml



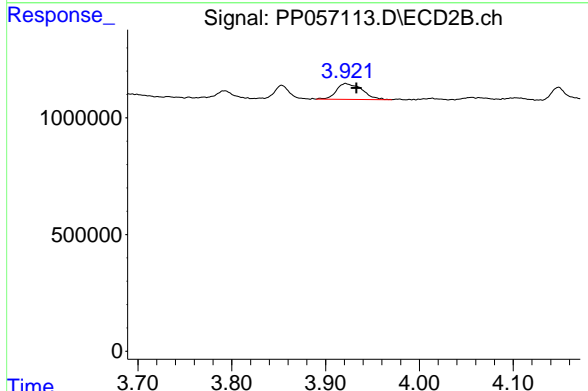
#8 AR-1221-1

R.T.: 3.853 min
 Delta R.T.: 0.006 min
 Response: 555574
 Conc: 26.03 ng/ml

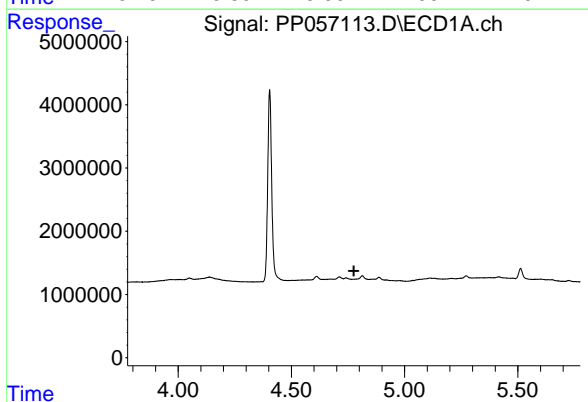


#9 AR-1221-2
 R.T.: 4.712 min
 Delta R.T.: 0.013 min
 Response: 699797
 Conc: 35.96 ng/ml

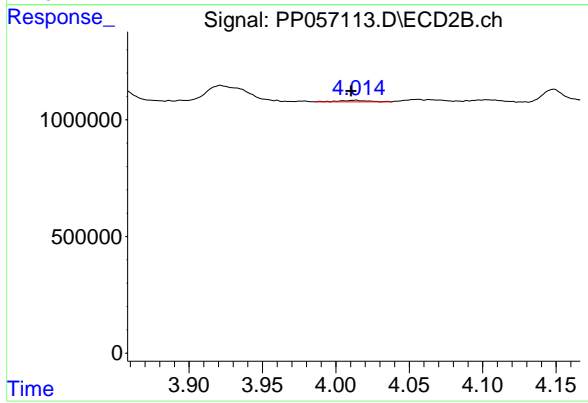
Instrument :
 ECD_P
 ClientSampleId :



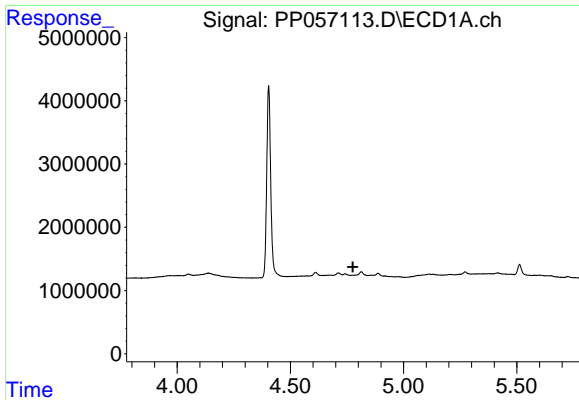
#9 AR-1221-2
 R.T.: 3.921 min
 Delta R.T.: -0.011 min
 Response: 1302408
 Conc: 80.99 ng/ml



#10 AR-1221-3
 R.T.: 0.000 min
 Exp R.T. : 4.776 min
 Response: 0
 Conc: N.D.



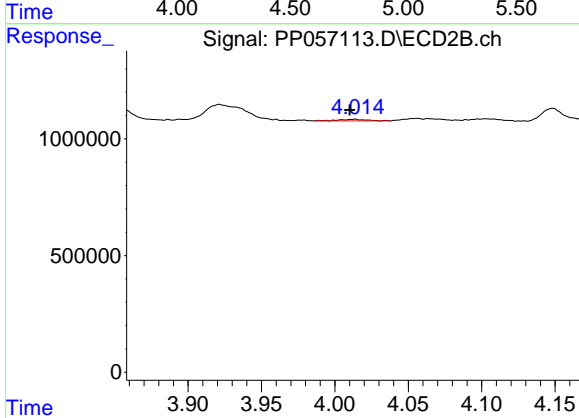
#10 AR-1221-3
 R.T.: 4.013 min
 Delta R.T.: 0.003 min
 Response: 93232
 Conc: 1.90 ng/ml



#11 AR-1232-1

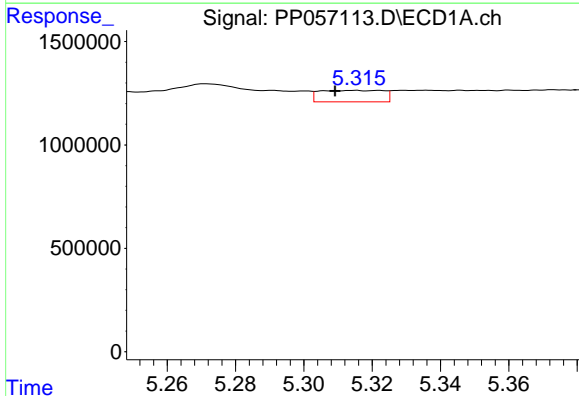
R.T.: 0.000 min
 Exp R.T.: 4.776 min
 Response: 0
 Conc: N.D.

Instrument :
 ECD_P
 ClientSampleId :



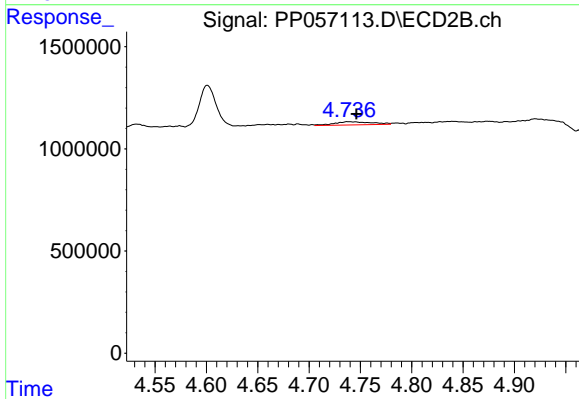
#11 AR-1232-1

R.T.: 4.013 min
 Delta R.T.: 0.003 min
 Response: 93232
 Conc: 2.32 ng/ml



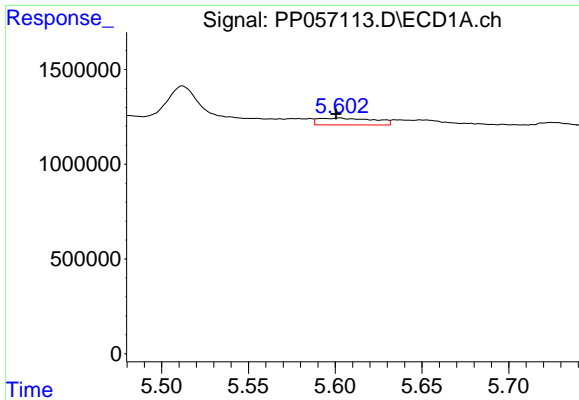
#12 AR-1232-2

R.T.: 5.315 min
 Delta R.T.: 0.006 min
 Response: 720593
 Conc: 29.01 ng/ml



#12 AR-1232-2

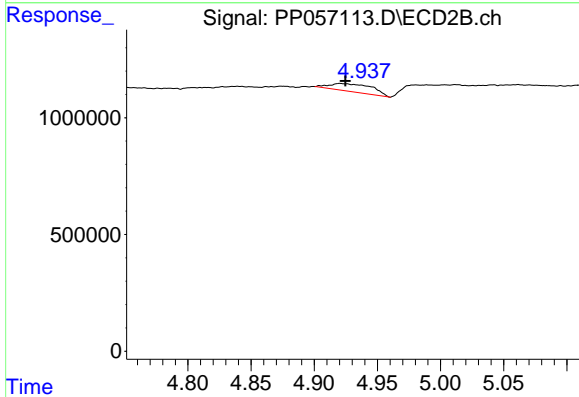
R.T.: 4.738 min
 Delta R.T.: -0.008 min
 Response: 393758
 Conc: 10.89 ng/ml



#13 AR-1232-3

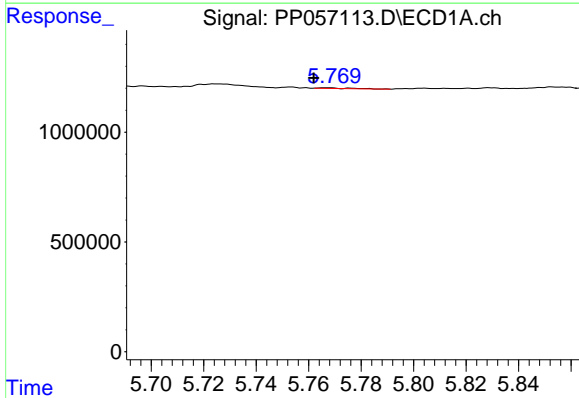
R.T.: 5.602 min
 Delta R.T.: 0.002 min
 Response: 803270
 Conc: 19.31 ng/ml

Instrument :
 ECD_P
 ClientSampleId :



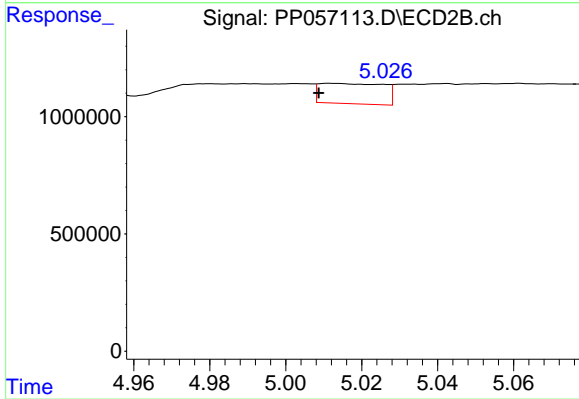
#13 AR-1232-3

R.T.: 4.920 min
 Delta R.T.: -0.004 min
 Response: 802801
 Conc: 41.77 ng/ml



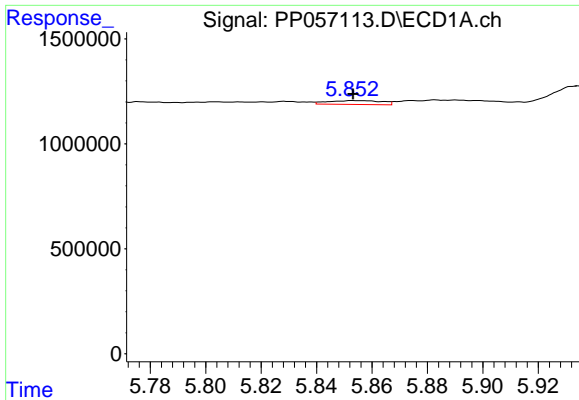
#14 AR-1232-4

R.T.: 5.768 min
 Delta R.T.: 0.006 min
 Response: 20127
 Conc: 0.97 ng/ml



#14 AR-1232-4

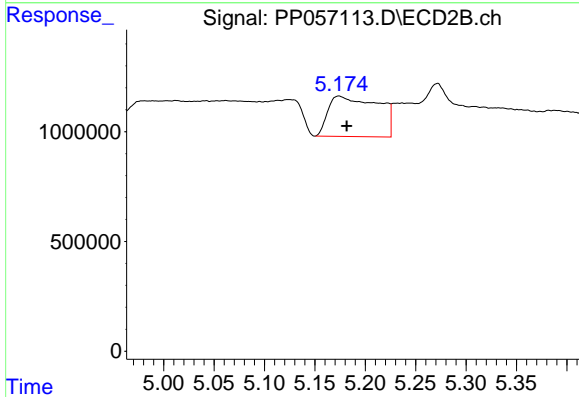
R.T.: 5.012 min
 Delta R.T.: 0.004 min
 Response: 1009844
 Conc: 50.96 ng/ml



#15 AR-1232-5

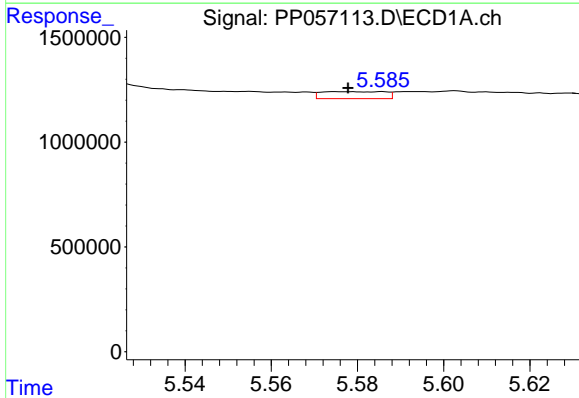
R.T.: 5.853 min
 Delta R.T.: 0.000 min
 Response: 248554
 Conc: 13.15 ng/ml

Instrument :
 ECD_P
 ClientSampleId :



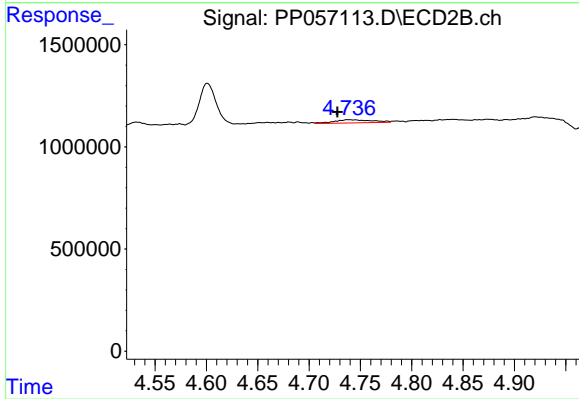
#15 AR-1232-5

R.T.: 5.174 min
 Delta R.T.: -0.008 min
 Response: 6336919
 Conc: 285.55 ng/ml



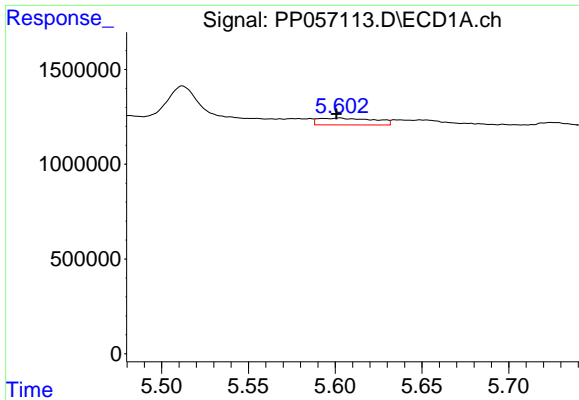
#16 AR-1242-1

R.T.: 5.576 min
 Delta R.T.: -0.002 min
 Response: 341779
 Conc: 6.68 ng/ml



#16 AR-1242-1

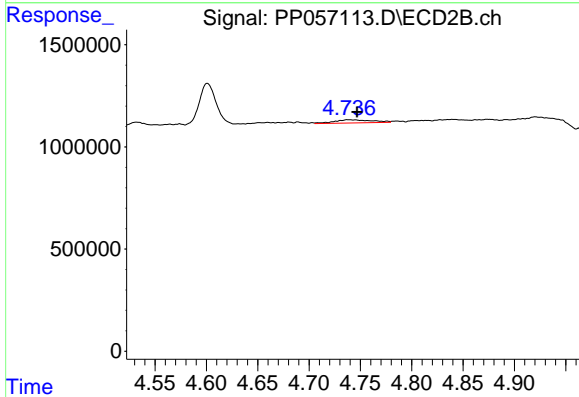
R.T.: 4.738 min
 Delta R.T.: 0.011 min
 Response: 393758
 Conc: 8.41 ng/ml



#17 AR-1242-2

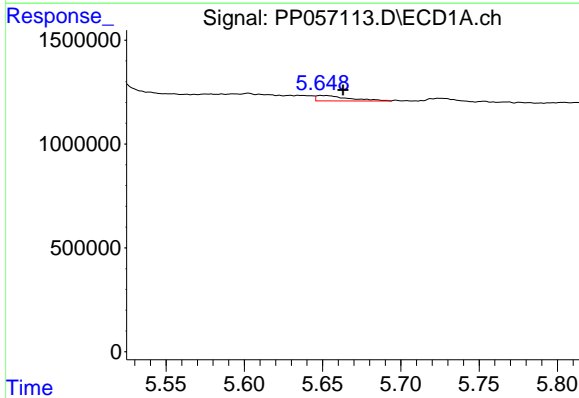
R.T.: 5.602 min
 Delta R.T.: 0.002 min
 Response: 803270
 Conc: 10.72 ng/ml

Instrument :
 ECD_P
 ClientSampleId :



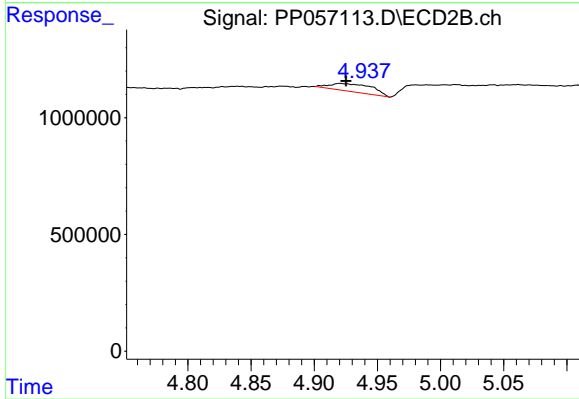
#17 AR-1242-2

R.T.: 4.738 min
 Delta R.T.: -0.008 min
 Response: 393758
 Conc: 6.06 ng/ml



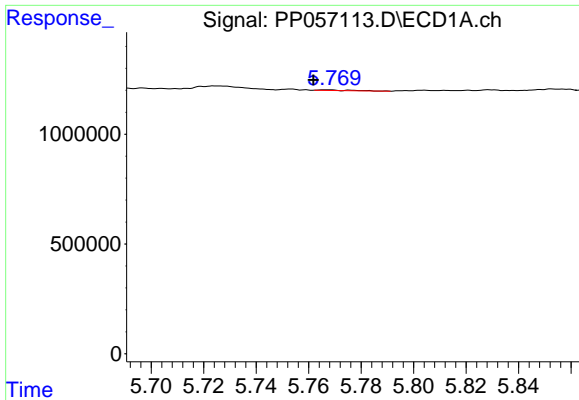
#18 AR-1242-3

R.T.: 5.649 min
 Delta R.T.: -0.014 min
 Response: 375204
 Conc: 7.97 ng/ml



#18 AR-1242-3

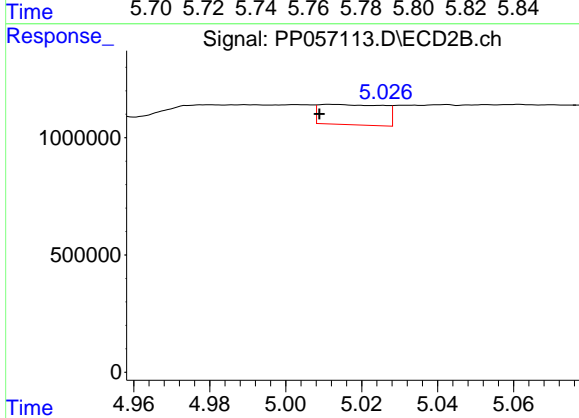
R.T.: 4.920 min
 Delta R.T.: -0.005 min
 Response: 802801
 Conc: 22.60 ng/ml



#19 AR-1242-4

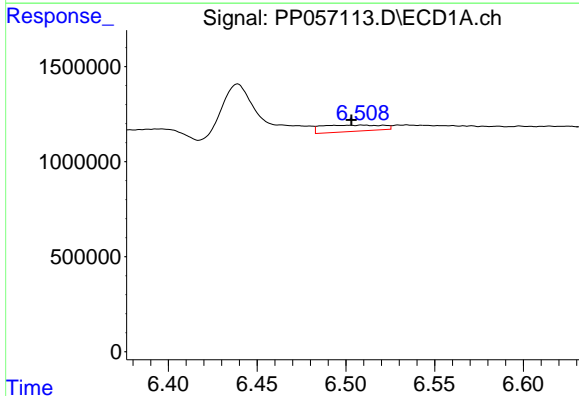
R.T.: 5.768 min
 Delta R.T.: 0.006 min
 Response: 20127
 Conc: 0.54 ng/ml

Instrument :
 ECD_P
 ClientSampleId :



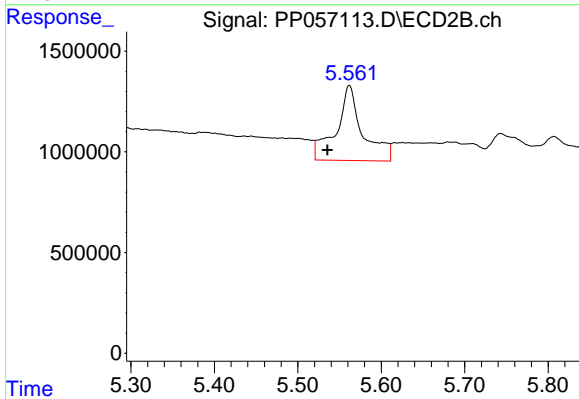
#19 AR-1242-4

R.T.: 5.012 min
 Delta R.T.: 0.003 min
 Response: 1009844
 Conc: 25.40 ng/ml



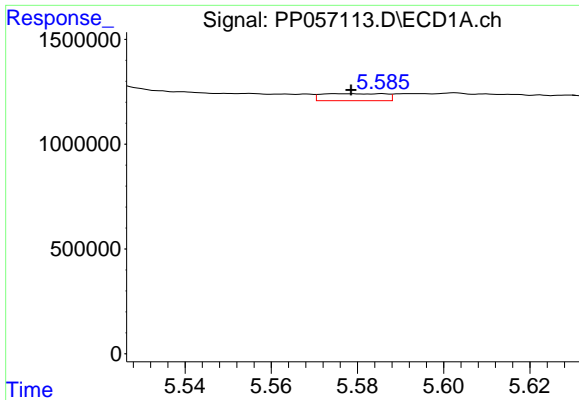
#20 AR-1242-5

R.T.: 6.510 min
 Delta R.T.: 0.006 min
 Response: 786701
 Conc: 23.36 ng/ml



#20 AR-1242-5

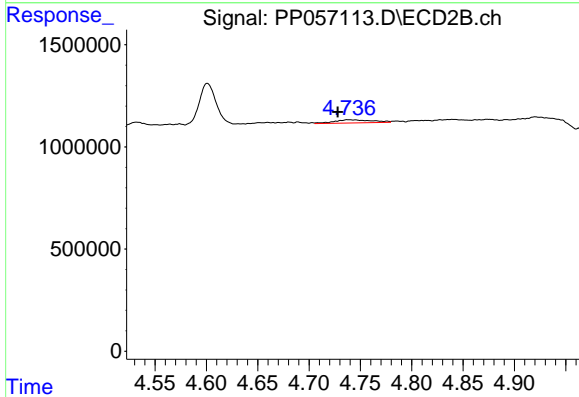
R.T.: 5.562 min
 Delta R.T.: 0.026 min
 Response: 8232776
 Conc: 184.03 ng/ml



#21 AR-1248-1

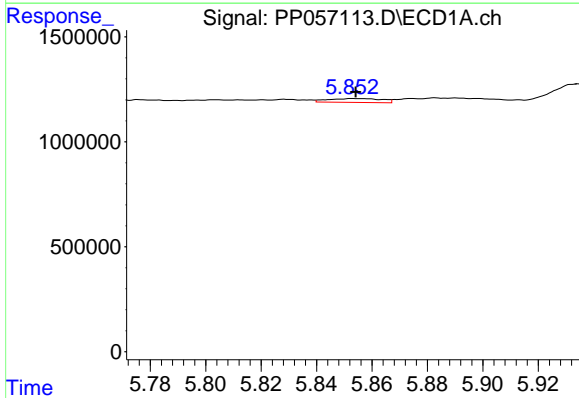
R.T.: 5.576 min
 Delta R.T.: -0.003 min
 Response: 341779
 Conc: 8.89 ng/ml

Instrument :
 ECD_P
 ClientSampleId :



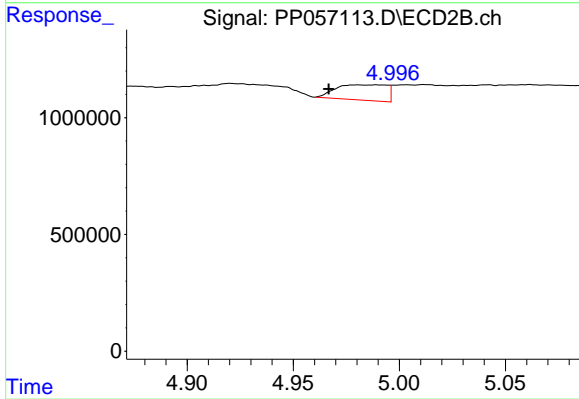
#21 AR-1248-1

R.T.: 4.738 min
 Delta R.T.: 0.010 min
 Response: 393758
 Conc: 11.16 ng/ml



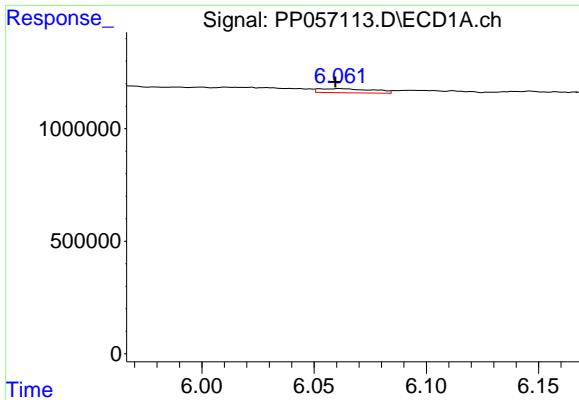
#22 AR-1248-2

R.T.: 5.853 min
 Delta R.T.: 0.000 min
 Response: 248554
 Conc: 3.94 ng/ml



#22 AR-1248-2

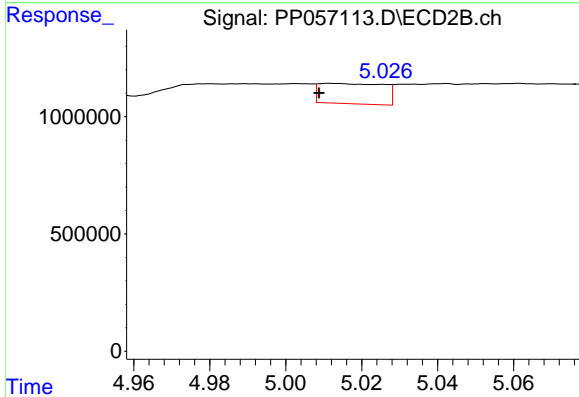
R.T.: 4.989 min
 Delta R.T.: 0.023 min
 Response: 1097237
 Conc: 19.77 ng/ml



#23 AR-1248-3

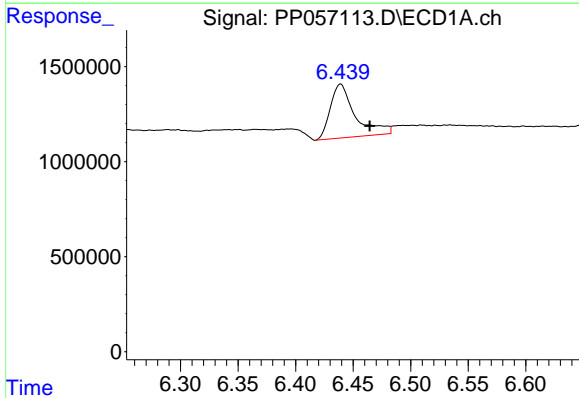
R.T.: 6.061 min
 Delta R.T.: 0.002 min
 Response: 307091
 Conc: 4.60 ng/ml

Instrument :
 ECD_P
 ClientSampleId :



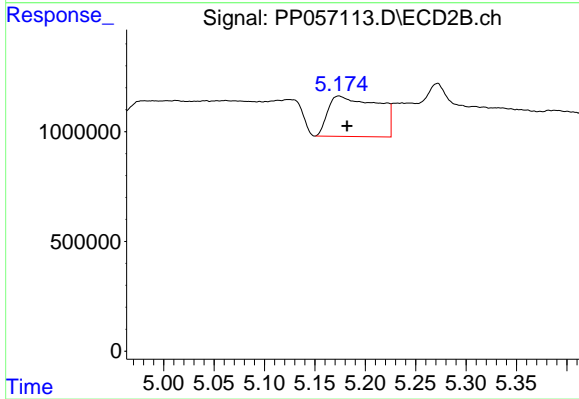
#23 AR-1248-3

R.T.: 5.012 min
 Delta R.T.: 0.003 min
 Response: 1009844
 Conc: 17.44 ng/ml



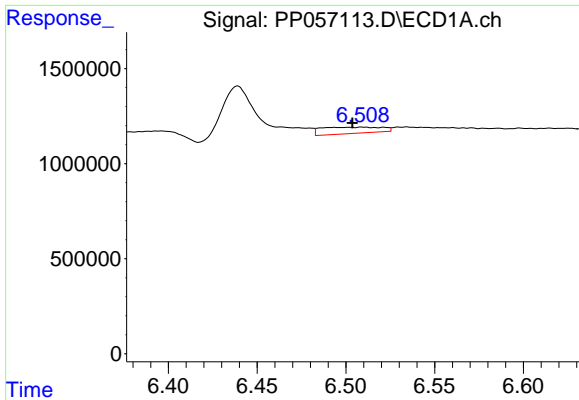
#24 AR-1248-4

R.T.: 6.439 min
 Delta R.T.: -0.025 min
 Response: 4263452
 Conc: 72.03 ng/ml



#24 AR-1248-4

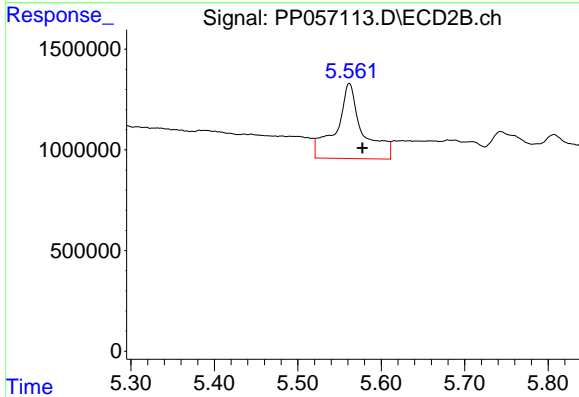
R.T.: 5.174 min
 Delta R.T.: -0.008 min
 Response: 6336919
 Conc: 93.34 ng/ml



#25 AR-1248-5

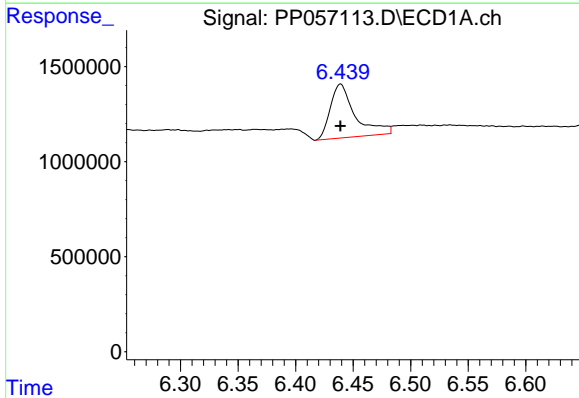
R.T.: 6.510 min
 Delta R.T.: 0.006 min
 Response: 786701
 Conc: 13.55 ng/ml

Instrument :
 ECD_P
 ClientSampleId :



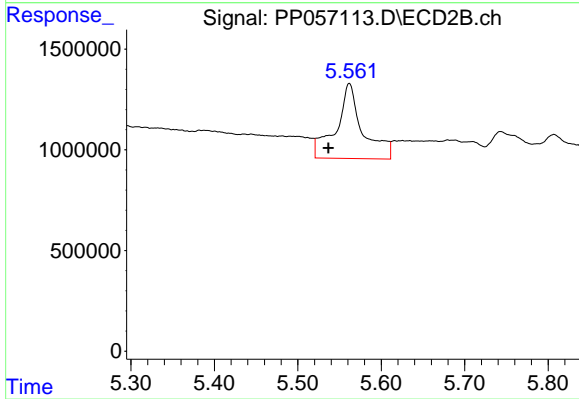
#25 AR-1248-5

R.T.: 5.562 min
 Delta R.T.: -0.016 min
 Response: 8232776
 Conc: 141.68 ng/ml



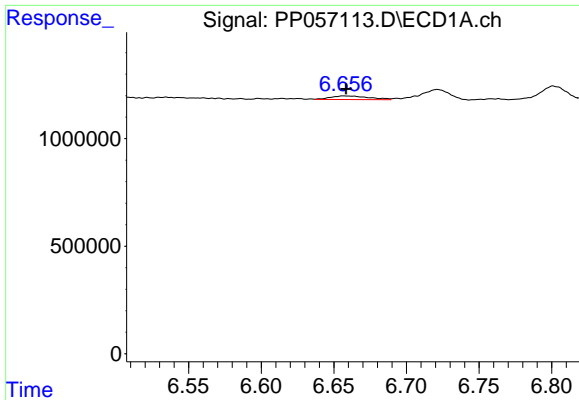
#26 AR-1254-1

R.T.: 6.439 min
 Delta R.T.: 0.000 min
 Response: 4263452
 Conc: 56.45 ng/ml



#26 AR-1254-1

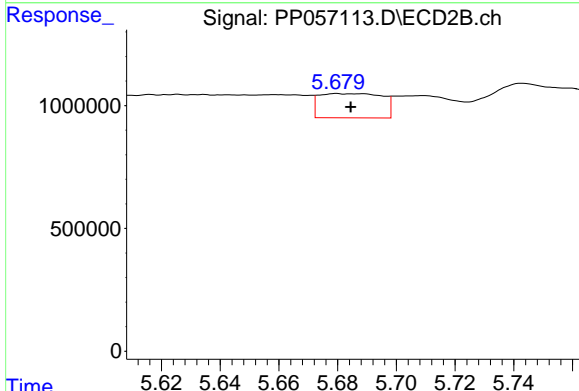
R.T.: 5.562 min
 Delta R.T.: 0.025 min
 Response: 8232776
 Conc: 81.70 ng/ml



#27 AR-1254-2

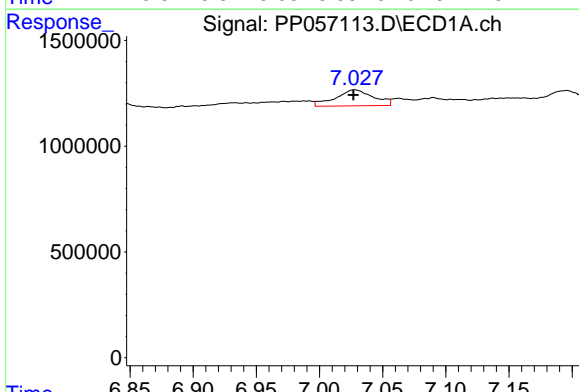
R.T.: 6.657 min
 Delta R.T.: -0.001 min
 Response: 307433
 Conc: 2.83 ng/ml

Instrument :
 ECD_P
 ClientSampleId :



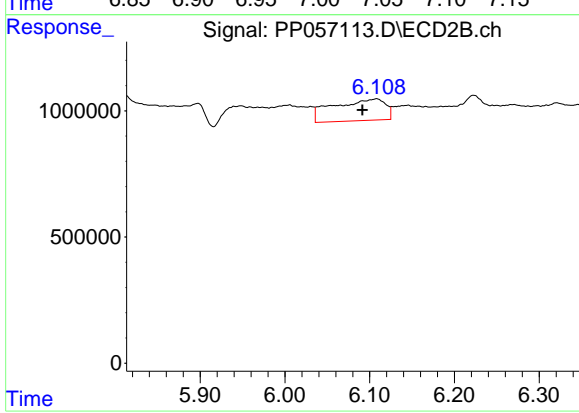
#27 AR-1254-2

R.T.: 5.680 min
 Delta R.T.: -0.005 min
 Response: 1474890
 Conc: 16.51 ng/ml



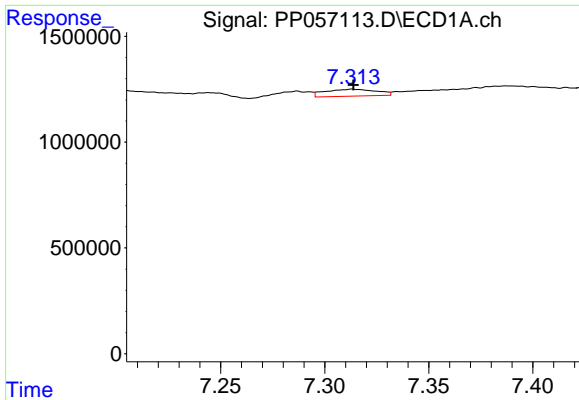
#28 AR-1254-3

R.T.: 7.028 min
 Delta R.T.: 0.001 min
 Response: 1572106
 Conc: 15.19 ng/ml



#28 AR-1254-3

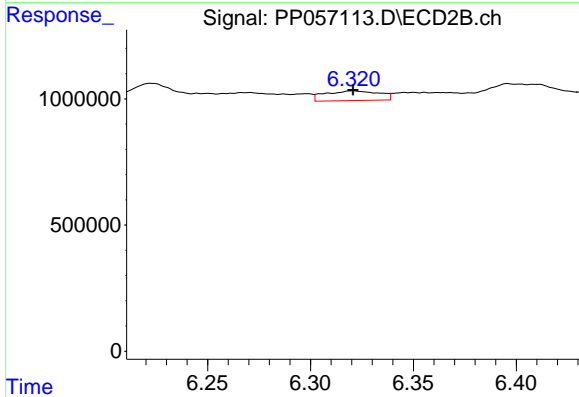
R.T.: 6.108 min
 Delta R.T.: 0.017 min
 Response: 3652337
 Conc: 26.07 ng/ml



#29 AR-1254-4

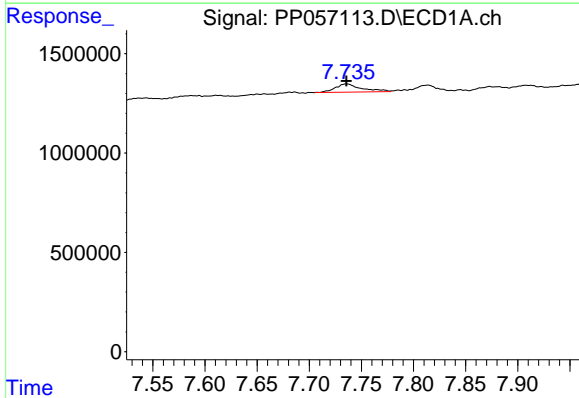
R.T.: 7.313 min
 Delta R.T.: 0.000 min
 Response: 562447
 Conc: 9.05 ng/ml

Instrument :
 ECD_P
 ClientSampleId :



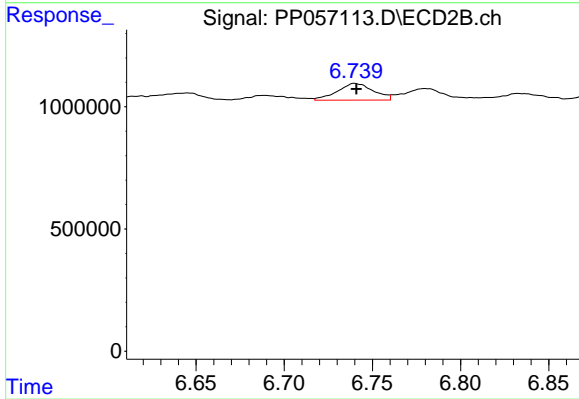
#29 AR-1254-4

R.T.: 6.321 min
 Delta R.T.: 0.000 min
 Response: 699528
 Conc: 9.28 ng/ml



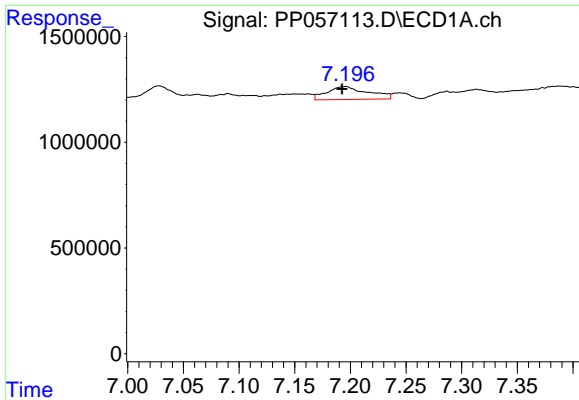
#30 AR-1254-5

R.T.: 7.736 min
 Delta R.T.: 0.000 min
 Response: 729896
 Conc: 10.13 ng/ml



#30 AR-1254-5

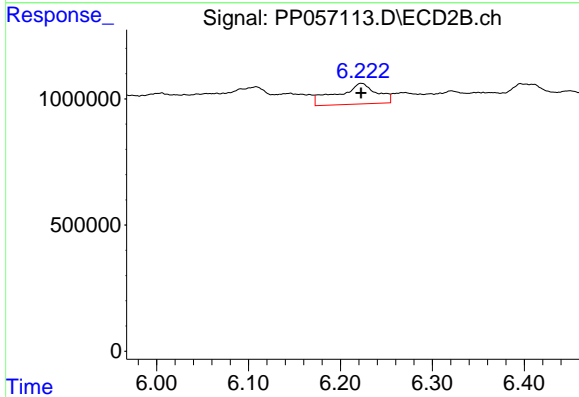
R.T.: 6.740 min
 Delta R.T.: 0.000 min
 Response: 970346
 Conc: 7.88 ng/ml



#31 AR-1260-1

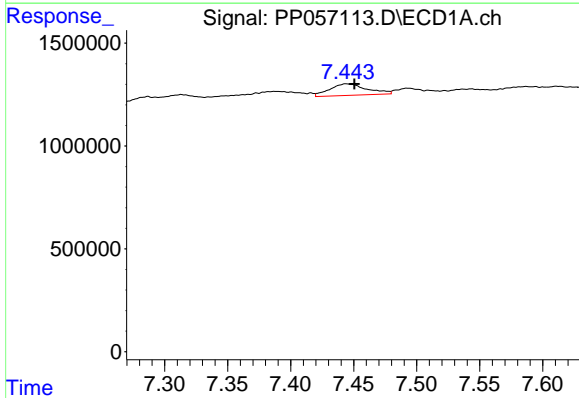
R.T.: 7.196 min
 Delta R.T.: 0.003 min
 Response: 1579116
 Conc: 18.13 ng/ml

Instrument :
 ECD_P
 ClientSampleId :



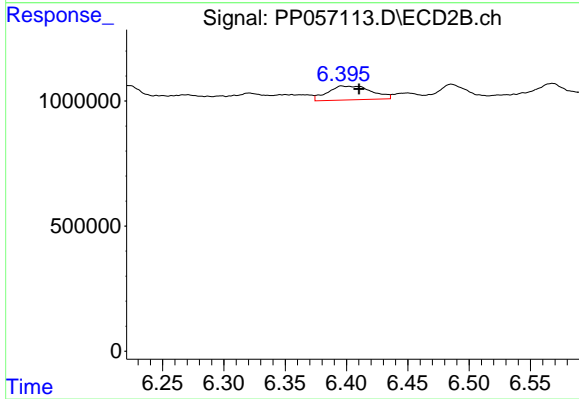
#31 AR-1260-1

R.T.: 6.223 min
 Delta R.T.: 0.000 min
 Response: 2455543
 Conc: 24.23 ng/ml



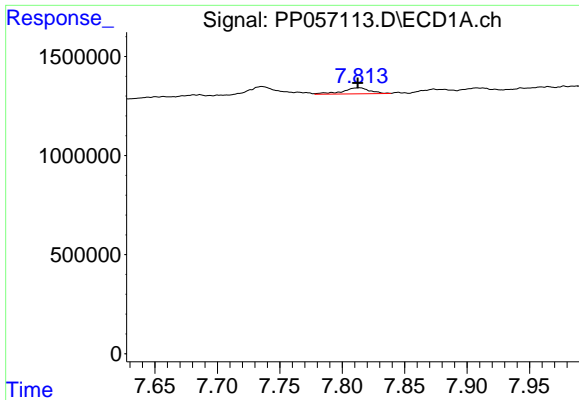
#32 AR-1260-2

R.T.: 7.444 min
 Delta R.T.: -0.006 min
 Response: 1161290
 Conc: 12.65 ng/ml



#32 AR-1260-2

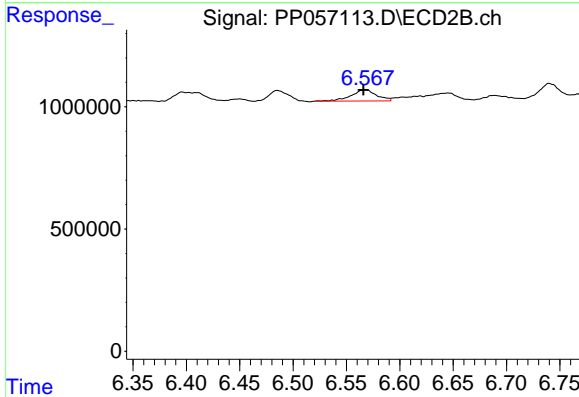
R.T.: 6.396 min
 Delta R.T.: -0.014 min
 Response: 1377179
 Conc: 11.85 ng/ml



#33 AR-1260-3

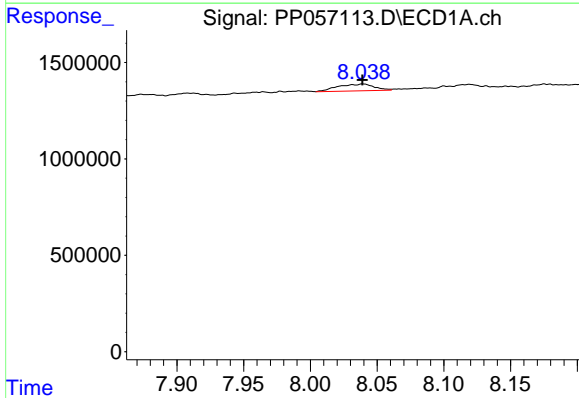
R.T.: 7.814 min
 Delta R.T.: 0.001 min
 Response: 468325
 Conc: 6.45 ng/ml

Instrument :
 ECD_P
 ClientSampleId :



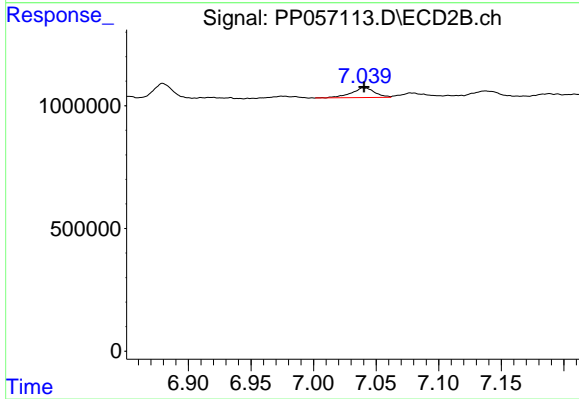
#33 AR-1260-3

R.T.: 6.568 min
 Delta R.T.: 0.002 min
 Response: 765290
 Conc: 6.92 ng/ml



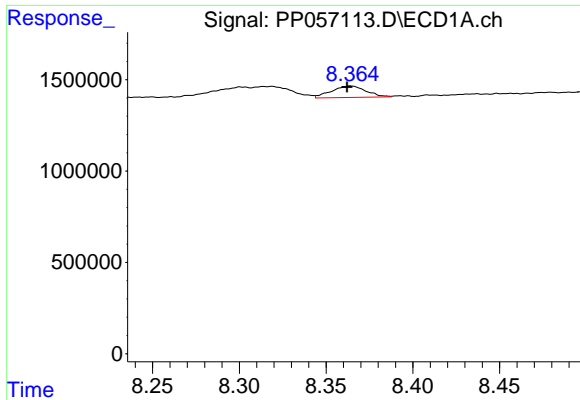
#34 AR-1260-4

R.T.: 8.040 min
 Delta R.T.: 0.000 min
 Response: 679007
 Conc: 8.08 ng/ml



#34 AR-1260-4

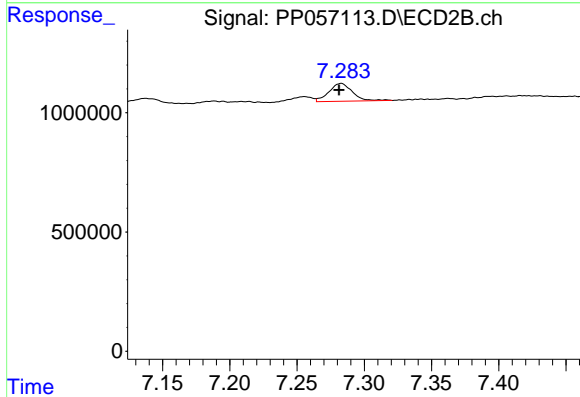
R.T.: 7.040 min
 Delta R.T.: 0.000 min
 Response: 527244
 Conc: 5.76 ng/ml



#35 AR-1260-5

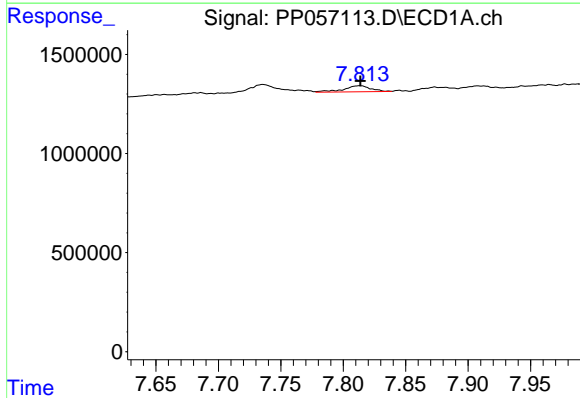
R.T.: 8.364 min
 Delta R.T.: 0.002 min
 Response: 864972
 Conc: 6.03 ng/ml

Instrument :
 ECD_P
 ClientSampleId :



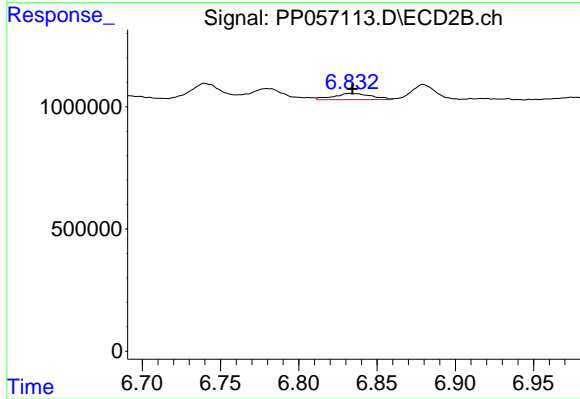
#35 AR-1260-5

R.T.: 7.283 min
 Delta R.T.: 0.001 min
 Response: 913247
 Conc: 5.06 ng/ml



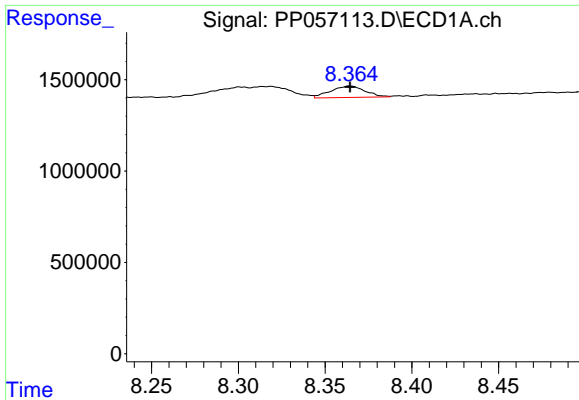
#36 AR-1262-1

R.T.: 7.814 min
 Delta R.T.: 0.000 min
 Response: 468325
 Conc: 4.64 ng/ml



#36 AR-1262-1

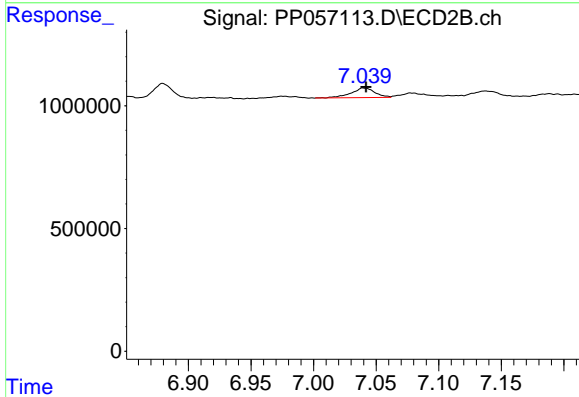
R.T.: 6.833 min
 Delta R.T.: -0.002 min
 Response: 423204
 Conc: 7.41 ng/ml



#37 AR-1262-2

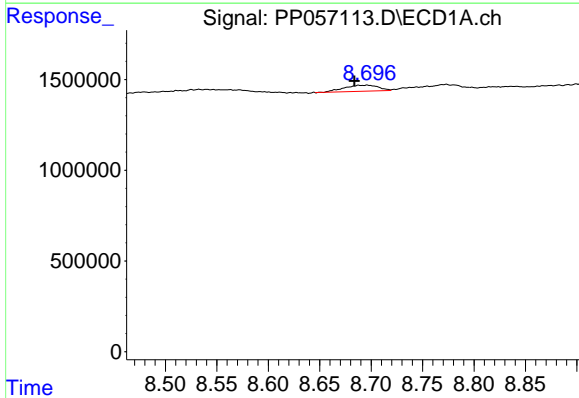
R.T.: 8.364 min
 Delta R.T.: 0.000 min
 Response: 864972
 Conc: 5.91 ng/ml

Instrument :
 ECD_P
 ClientSampleId :



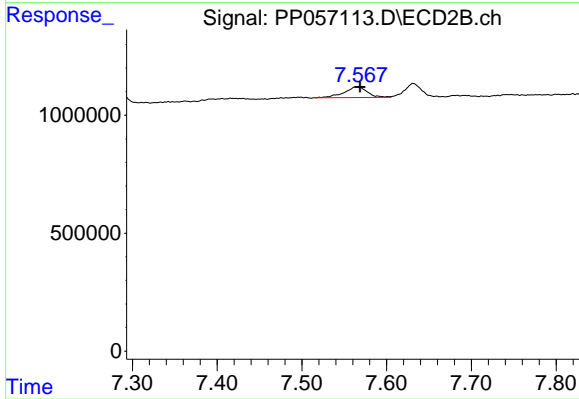
#37 AR-1262-2

R.T.: 7.040 min
 Delta R.T.: -0.002 min
 Response: 527244
 Conc: 4.54 ng/ml



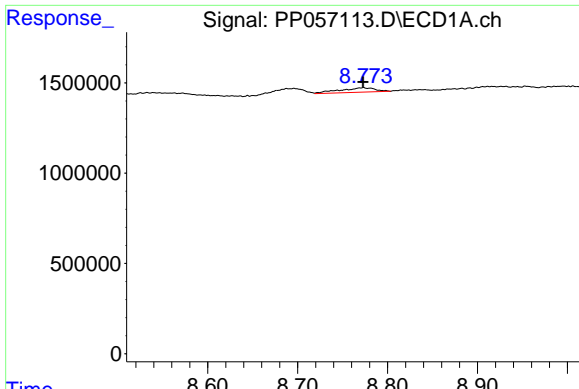
#38 AR-1262-3

R.T.: 8.696 min
 Delta R.T.: 0.013 min
 Response: 758902
 Conc: 7.07 ng/ml



#38 AR-1262-3

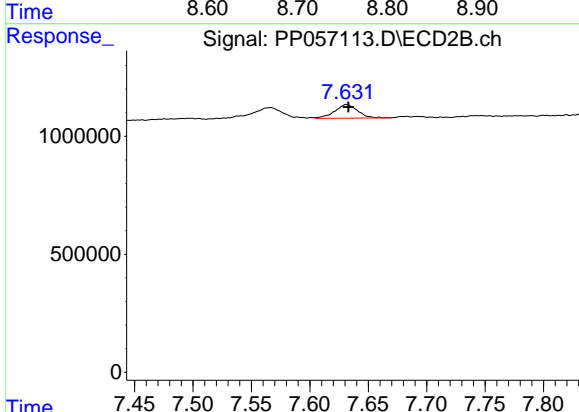
R.T.: 7.566 min
 Delta R.T.: -0.002 min
 Response: 854965
 Conc: 9.43 ng/ml



#39 AR-1262-4

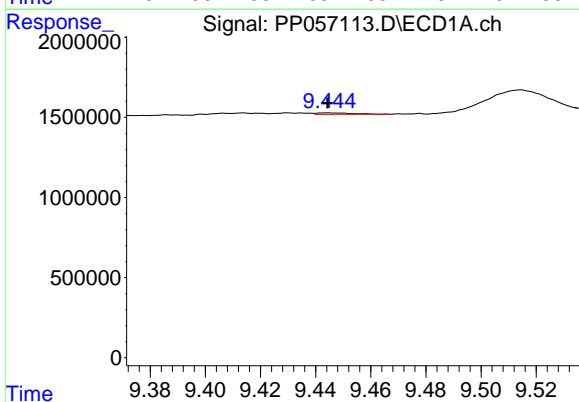
R.T.: 8.773 min
 Delta R.T.: 0.000 min
 Response: 685800
 Conc: 8.21 ng/ml

Instrument :
 ECD_P
 ClientSampleId :



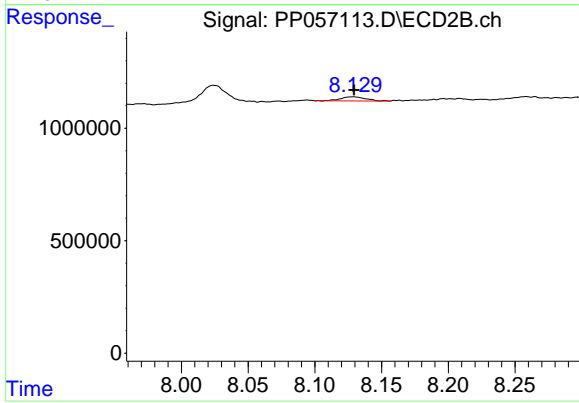
#39 AR-1262-4

R.T.: 7.631 min
 Delta R.T.: -0.002 min
 Response: 788771
 Conc: 5.02 ng/ml



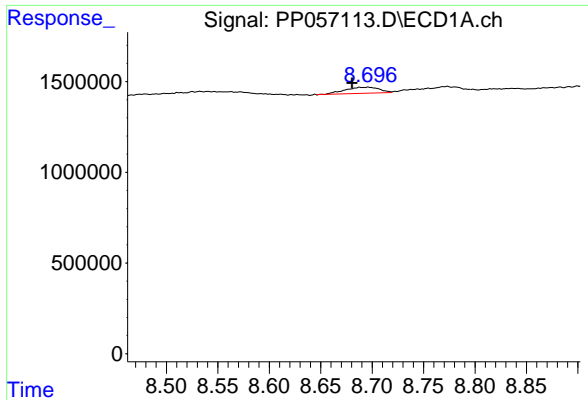
#40 AR-1262-5

R.T.: 9.444 min
 Delta R.T.: 0.000 min
 Response: 82717
 Conc: 1.73 ng/ml



#40 AR-1262-5

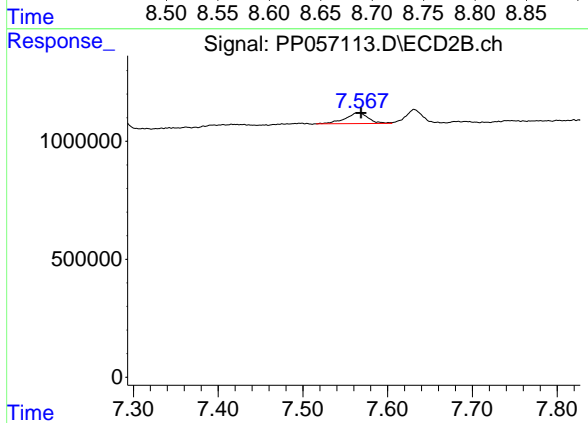
R.T.: 8.129 min
 Delta R.T.: 0.000 min
 Response: 236012
 Conc: 3.45 ng/ml



#41 AR-1268-1

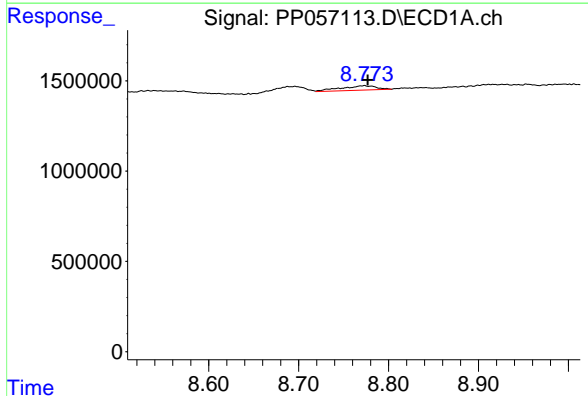
R.T.: 8.696 min
 Delta R.T.: 0.016 min
 Response: 758902
 Conc: 3.60 ng/ml

Instrument :
 ECD_P
 ClientSampleId :



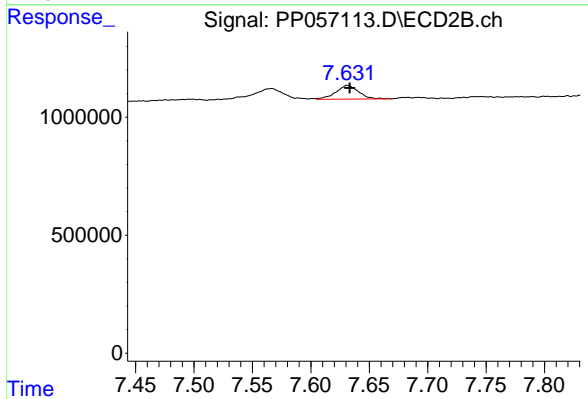
#41 AR-1268-1

R.T.: 7.566 min
 Delta R.T.: -0.003 min
 Response: 854965
 Conc: 3.08 ng/ml



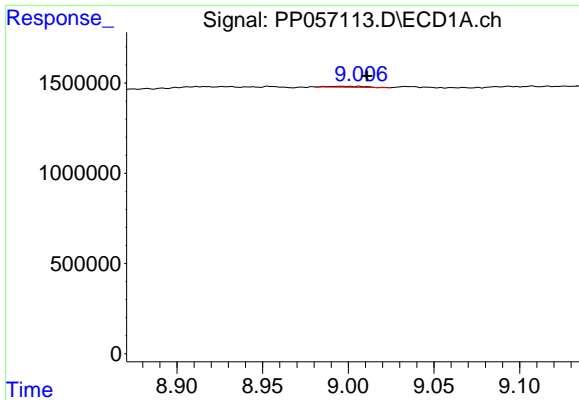
#42 AR-1268-2

R.T.: 8.773 min
 Delta R.T.: -0.004 min
 Response: 685800
 Conc: 3.83 ng/ml



#42 AR-1268-2

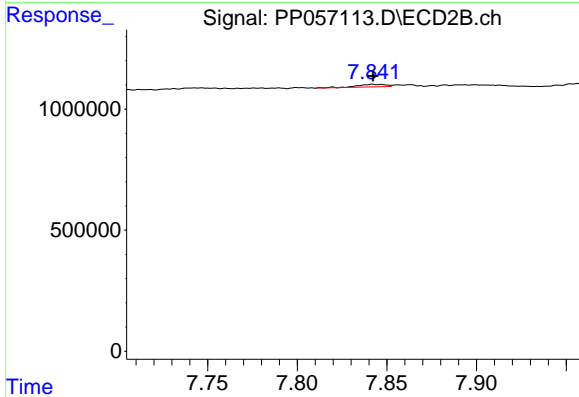
R.T.: 7.631 min
 Delta R.T.: -0.002 min
 Response: 788771
 Conc: 3.16 ng/ml



#43 AR-1268-3

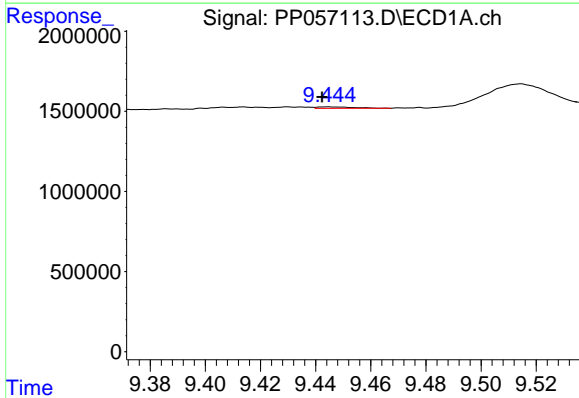
R.T.: 8.996 min
 Delta R.T.: -0.015 min
 Response: 71064
 Conc: 0.40 ng/ml

Instrument :
 ECD_P
 ClientSampleId :



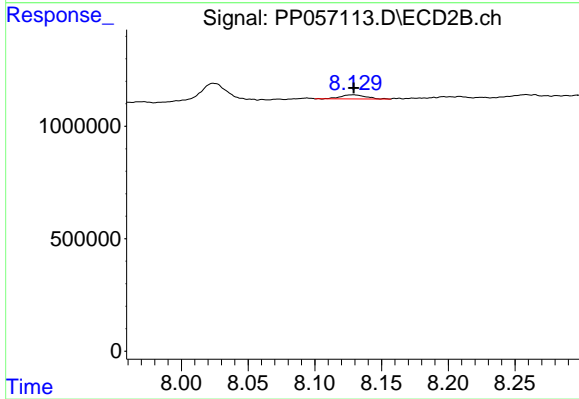
#43 AR-1268-3

R.T.: 7.842 min
 Delta R.T.: 0.000 min
 Response: 115579
 Conc: 0.52 ng/ml



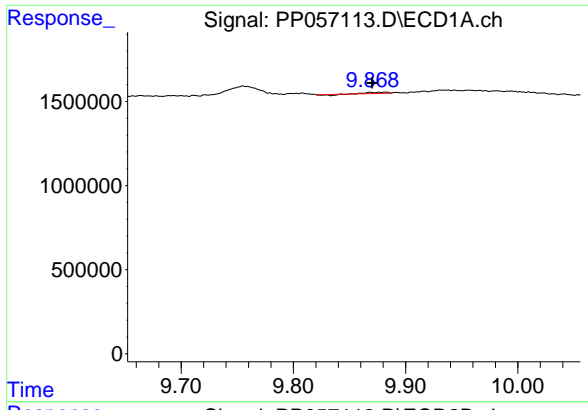
#44 AR-1268-4

R.T.: 9.444 min
 Delta R.T.: 0.002 min
 Response: 82717
 Conc: 1.46 ng/ml



#44 AR-1268-4

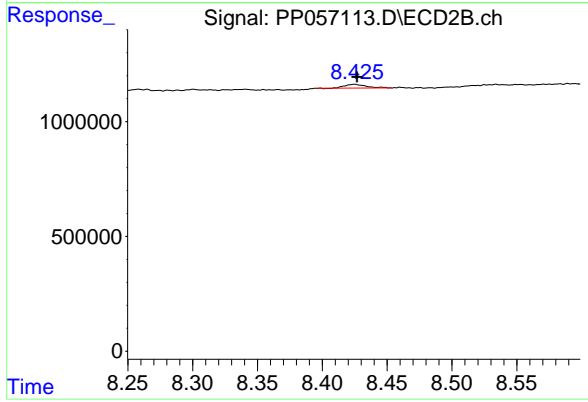
R.T.: 8.129 min
 Delta R.T.: 0.000 min
 Response: 236012
 Conc: 2.95 ng/ml



#45 AR-1268-5

R.T.: 9.882 min
 Delta R.T.: 0.012 min
 Response: 64432
 Conc: 0.14 ng/ml

Instrument :
 ECD_P
 ClientSampleId :



#45 AR-1268-5

R.T.: 8.425 min
 Delta R.T.: -0.002 min
 Response: 182894
 Conc: 0.31 ng/ml