

Data Path : Z:\pestpcbsrv\HPCHEM1\ECD_P\Data\PP042121\
 Data File : PP035119.D
 Signal(s) : Signal #1: ECD1A.CH Signal #2: ECD2B.CH
 Acq On : 22 Apr 2021 2:22
 Operator : DD\AJ
 Sample : M2077-04
 Misc :
 ALS Vial : 47 Sample Multiplier: 1

Instrument :
 ECD_P
ClientSampleId :
 SB-20-14.5-15.0

Manual Integrations
APPROVED
 Ankita
 4/22/2021 2:45:51 PM

Integration File signal 1: autoint1.e
 Integration File signal 2: autoint2.e
 Quant Time: Apr 22 03:27:05 2021
 Quant Method : Z:\pestpcbsrv\HPCHEM1\ECD_P\methods\PP042121.M
 Quant Title : GC EXTRACTABLES
 QLast Update : Wed Apr 21 17:37:28 2021
 Response via : Initial Calibration
 Integrator: ChemStation 6890 Scale Mode: Small noise peaks clipped

Volume Inj. : 2 µl
 Signal #1 Phase : ZB-MR1 Signal #2 Phase: ZB-MR2
 Signal #1 Info : 30Mx0.32mmx 0.50µ Signal #2 Info : 30M x 0.32mm x 0.25µm

Compound	RT#1	RT#2	Resp#1	Resp#2	ng/ml	ng/ml

System Monitoring Compounds						
1) SA Tetrachlo...	4.833	4.250	1407673	1111716	17.275m	21.588
2) SA Decachlor...	10.743	9.539	2002138	689896	31.683m	29.036

Target Compounds

 (f)=RT Delta > 1/2 Window (#)=Amounts differ by > 25% (m)=manual int.

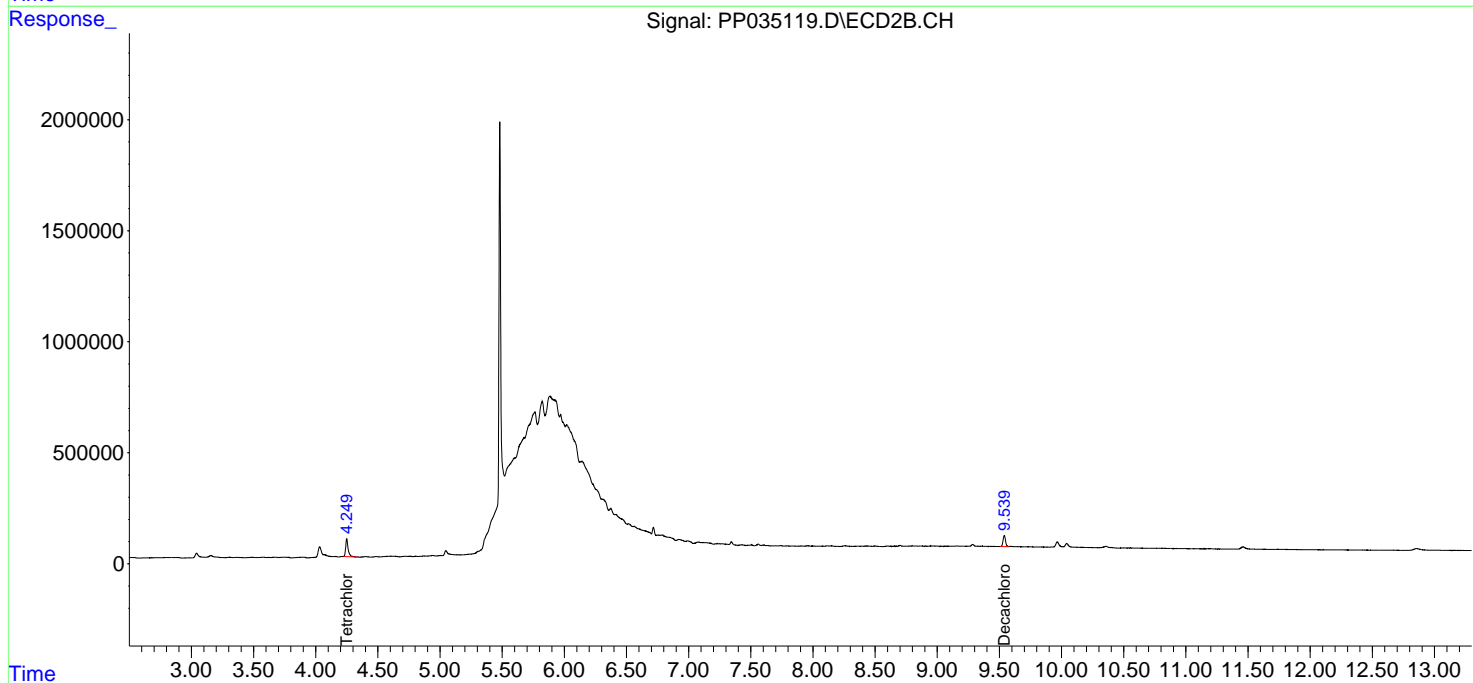
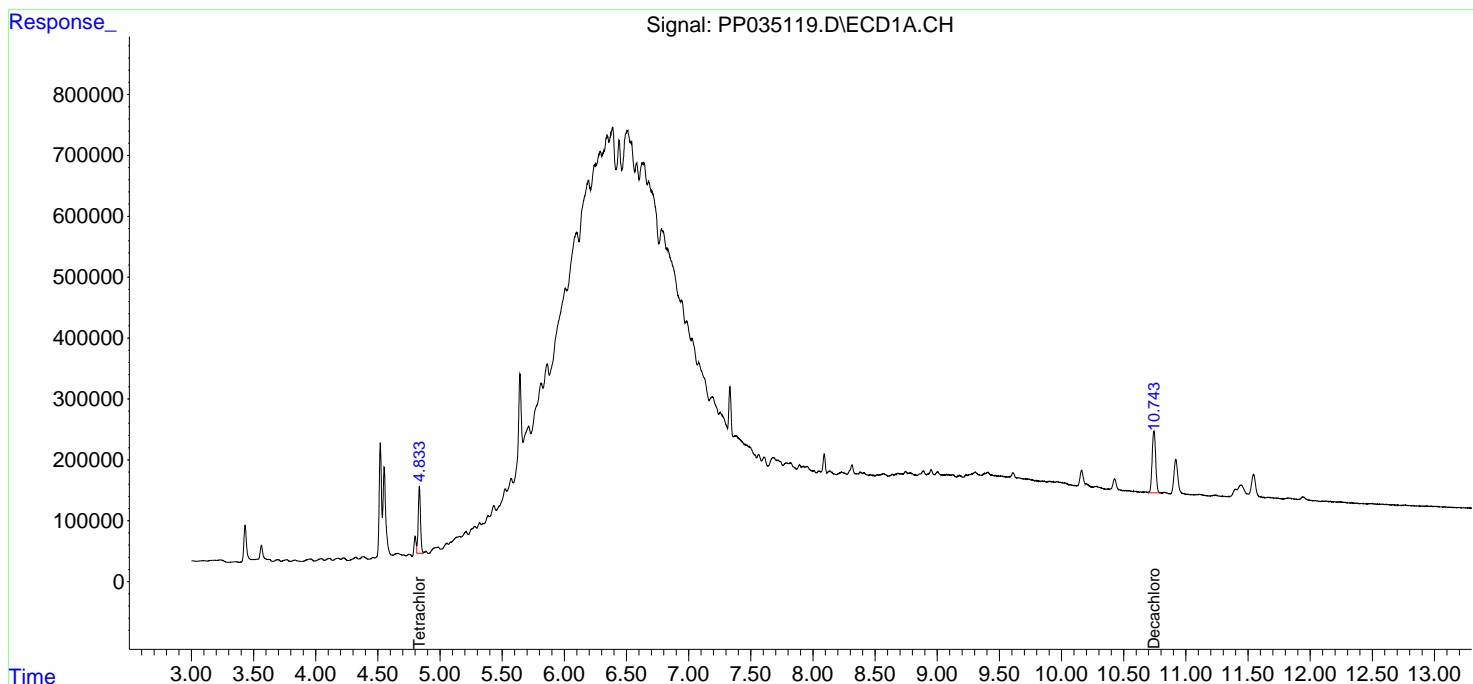
Data Path : Z:\pestpcbsrv\HPCHEM1\ECD_P\Data\PP042121\
 Data File : PP035119.D
 Signal(s) : Signal #1: ECD1A.CH Signal #2: ECD2B.CH
 Acq On : 22 Apr 2021 2:22
 Operator : DD\AJ
 Sample : M2077-04
 Misc :
 ALS Vial : 47 Sample Multiplier: 1

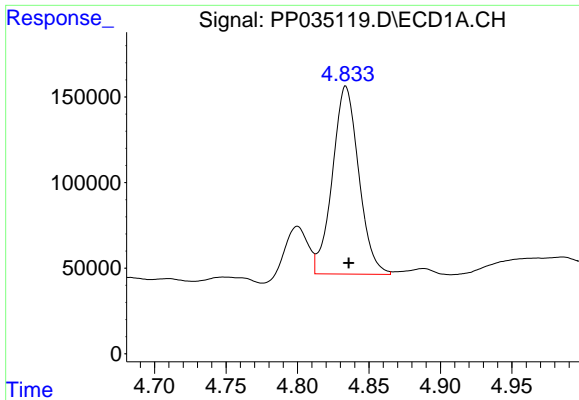
Instrument :
 ECD_P
Client Sampled :
 SB-20-14.5-15.0

Manual Integrations
APPROVED
 Ankita
 4/22/2021 2:45:51 PM

Integration File signal 1: autoint1.e
 Integration File signal 2: autoint2.e
 Quant Time: Apr 22 03:27:05 2021
 Quant Method : Z:\pestpcbsrv\HPCHEM1\ECD_P\methods\PP042121.M
 Quant Title : GC EXTRACTABLES
 QLast Update : Wed Apr 21 17:37:28 2021
 Response via : Initial Calibration
 Integrator: ChemStation 6890 Scale Mode: Small noise peaks clipped

Volume Inj. : 2 µl
 Signal #1 Phase : ZB-MR1 Signal #2 Phase: ZB-MR2
 Signal #1 Info : 30Mx0.32mmx 0.50µ Signal #2 Info : 30M x 0.32mm x 0.25µm

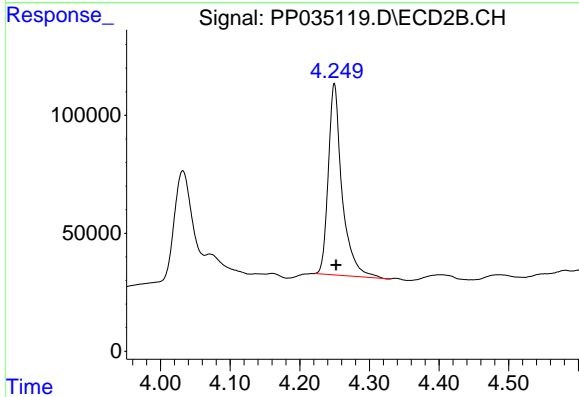




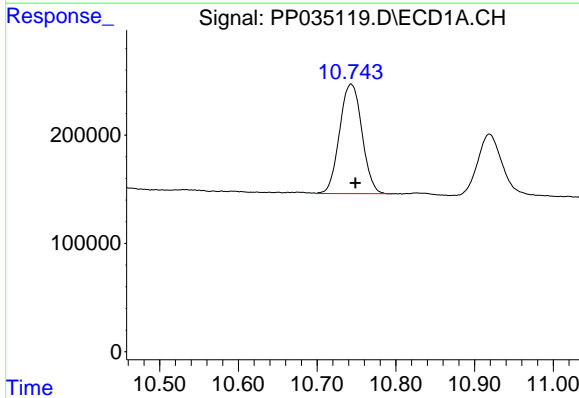
#1 Tetrachloro-m-xylene
 R.T.: 4.833 min
 Delta R.T.: -0.003 min
 Response: 1407673
 Conc: 17.28 ng/ml m

Instrument :
 ECD_P
 ClientSampleId :
 SB-20-14.5-15.0

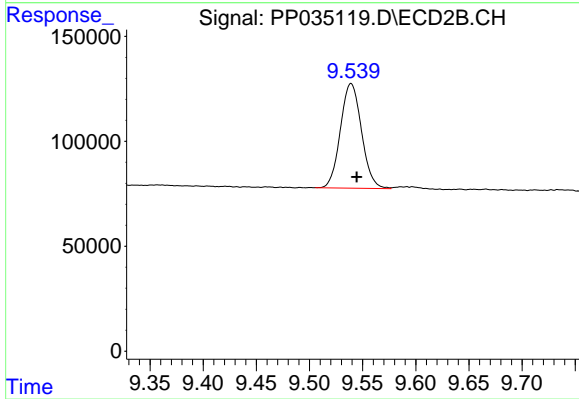
Manual Integrations
APPROVED
 Ankita
 4/22/2021 2:45:51 PM



#1 Tetrachloro-m-xylene
 R.T.: 4.250 min
 Delta R.T.: -0.002 min
 Response: 1111716
 Conc: 21.59 ng/ml



#2 Decachlorobiphenyl
 R.T.: 10.743 min
 Delta R.T.: -0.006 min
 Response: 2002138
 Conc: 31.68 ng/ml m



#2 Decachlorobiphenyl
 R.T.: 9.539 min
 Delta R.T.: -0.005 min
 Response: 689896
 Conc: 29.04 ng/ml