

Data Path : Z:\pestpcbsrv\HPCHEM1\ECD\_P\Data\PP042121\  
 Data File : PP035126.D  
 Signal(s) : Signal #1: ECD1A.CH Signal #2: ECD2B.CH  
 Acq On : 22 Apr 2021 4:37  
 Operator : DD\AJ  
 Sample : M2090-08  
 Misc :  
 ALS Vial : 52 Sample Multiplier: 1

**Instrument :**  
 ECD\_P  
**ClientSampleId :**  
 SEDGWICK-COMP-2

**Manual Integrations**  
**APPROVED**

Ankita  
 4/22/2021 2:45:56 PM

Integration File signal 1: autoint1.e  
 Integration File signal 2: autoint2.e  
 Quant Time: Apr 22 07:09:22 2021  
 Quant Method : Z:\pestpcbsrv\HPCHEM1\ECD\_P\methods\PP042121.M  
 Quant Title : GC EXTRACTABLES  
 QLast Update : Wed Apr 21 17:37:28 2021  
 Response via : Initial Calibration  
 Integrator: ChemStation 6890 Scale Mode: Small noise peaks clipped

Volume Inj. : 2 µl  
 Signal #1 Phase : ZB-MR1 Signal #2 Phase: ZB-MR2  
 Signal #1 Info : 30Mx0.32mmx 0.50µ Signal #2 Info : 30M x 0.32mm x 0.25µm

Compound	RT#1	RT#2	Resp#1	Resp#2	ng/ml	ng/ml
-----						
System Monitoring Compounds						
1) SA Tetrachlo...	4.834	4.250	1761701	1063581	21.620	20.653
2) SA Decachlor...	10.745	9.540	1912016	661274	30.257	27.831
Target Compounds						
26) L6 AR-1254-1	7.053	6.367	474457	301366	184.043	178.033
27) L6 AR-1254-2	7.281	6.522	709984	169071	187.623	113.157 #
28) L6 AR-1254-3	7.661	6.942	859826	322876	230.462	151.838m#
29) L6 AR-1254-4	7.954	7.178	372824	169481	178.008	189.119
30) L6 AR-1254-5	8.382	7.603	801869	3262083	275.636m	1835.285 #
31) L7 AR-1260-1	7.826	7.076	678883	383664	201.585	219.292
32) L7 AR-1260-2	8.090	7.269	2191104	406780	643.604m	228.192 #
33) L7 AR-1260-3	8.455	7.424	574126	403554	228.735	223.809m
34) L7 AR-1260-4	8.683	7.903	652172	242271	222.186m	190.331m
35) L7 AR-1260-5	9.003	8.148	1244682	558687	253.002	229.793m

(f)=RT Delta > 1/2 Window (#)=Amounts differ by > 25% (m)=manual int.

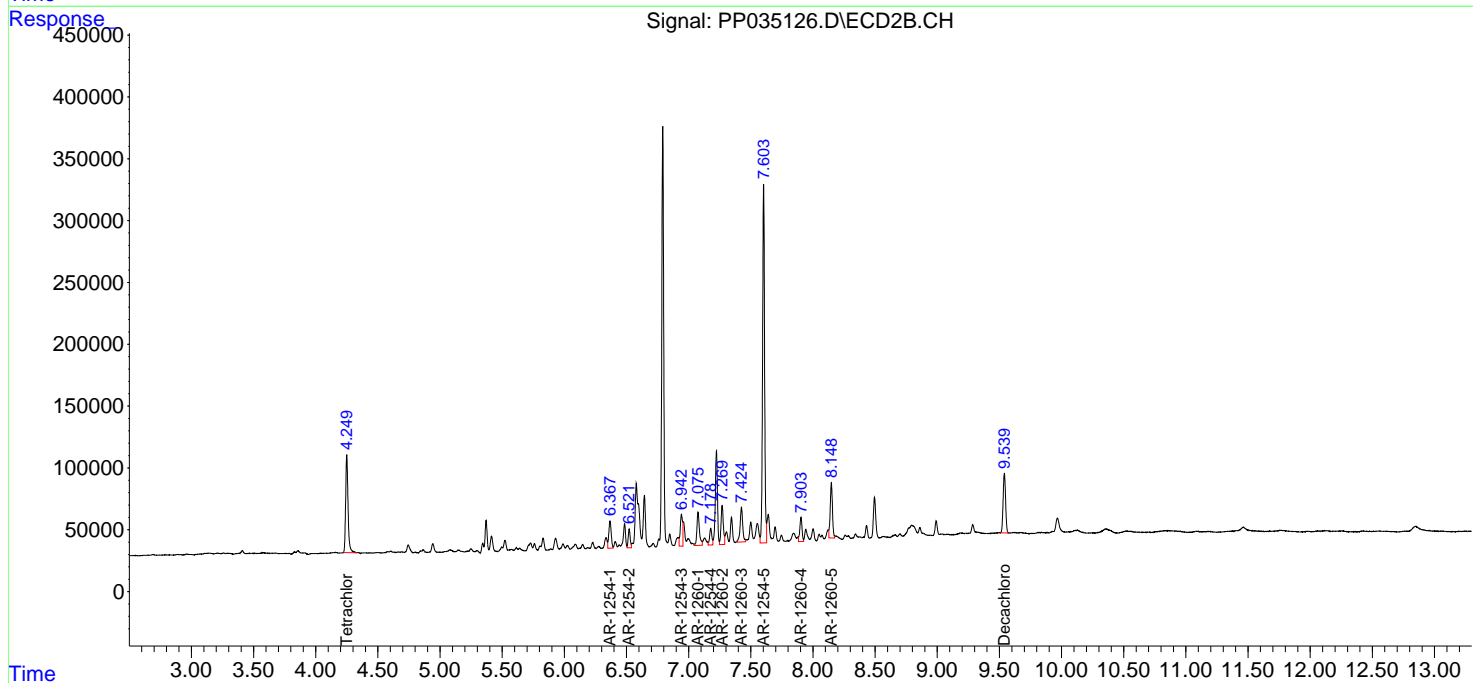
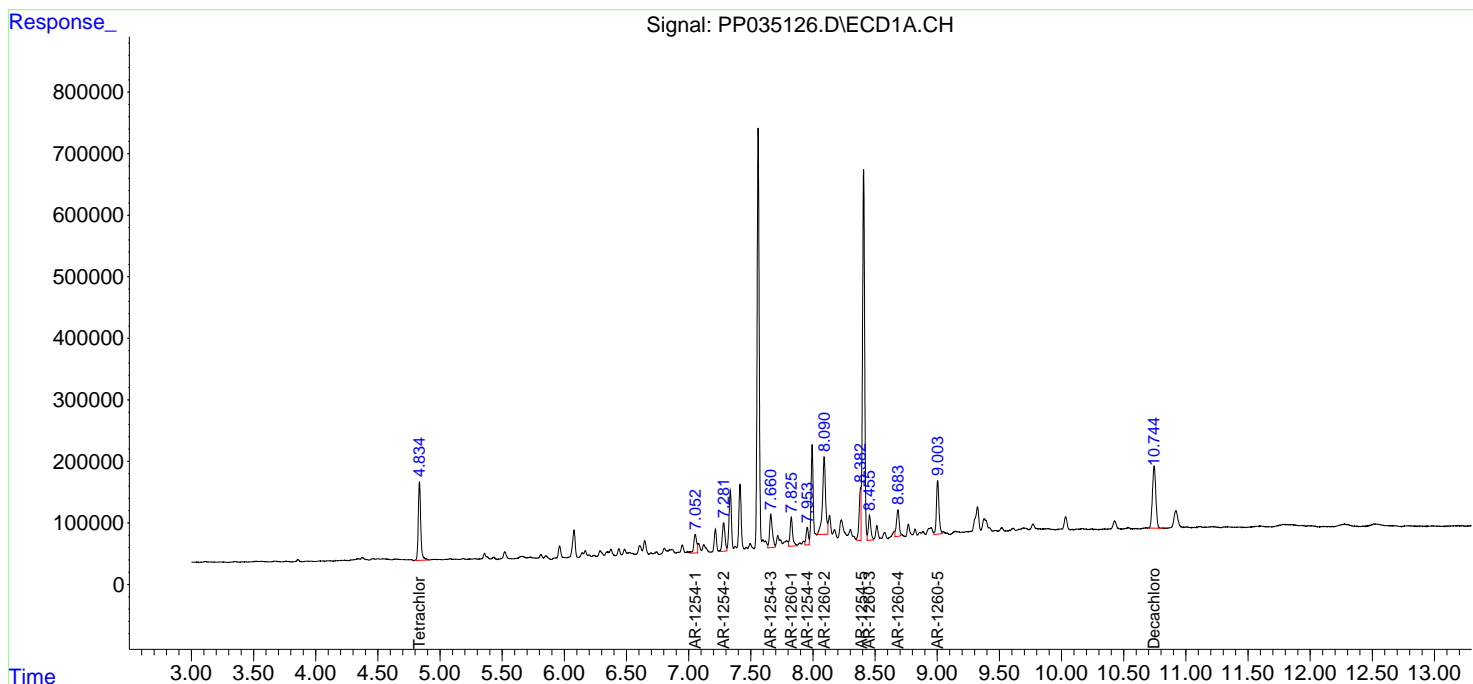
Data Path : Z:\pestpcbsrv\HPCHEM1\ECD\_P\Data\PP042121\  
 Data File : PP035126.D  
 Signal(s) : Signal #1: ECD1A.CH Signal #2: ECD2B.CH  
 Acq On : 22 Apr 2021 4:37  
 Operator : DD\AJ  
 Sample : M2090-08  
 Misc :  
 ALS Vial : 52 Sample Multiplier: 1

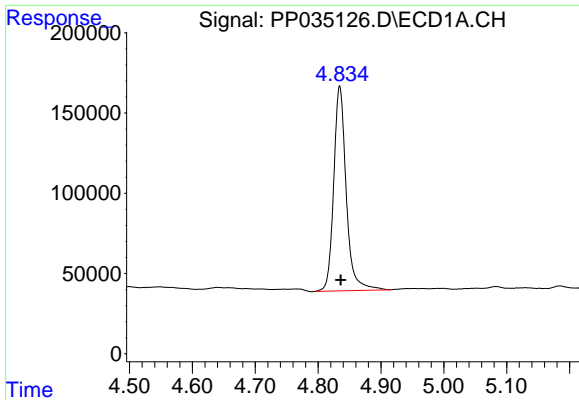
**Instrument :**  
 ECD\_P  
**Client Sampled :**  
 SEDGWICK-COMP-2

**Manual Integrations**  
**APPROVED**  
 Ankita  
 4/22/2021 2:45:56 PM

Integration File signal 1: autoint1.e  
 Integration File signal 2: autoint2.e  
 Quant Time: Apr 22 07:09:22 2021  
 Quant Method : Z:\pestpcbsrv\HPCHEM1\ECD\_P\methods\PP042121.M  
 Quant Title : GC EXTRACTABLES  
 QLast Update : Wed Apr 21 17:37:28 2021  
 Response via : Initial Calibration  
 Integrator: ChemStation 6890 Scale Mode: Small noise peaks clipped

Volume Inj. : 2 µl  
 Signal #1 Phase : ZB-MR1 Signal #2 Phase: ZB-MR2  
 Signal #1 Info : 30Mx0.32mmx 0.50µ Signal #2 Info : 30M x 0.32mm x 0.25µm

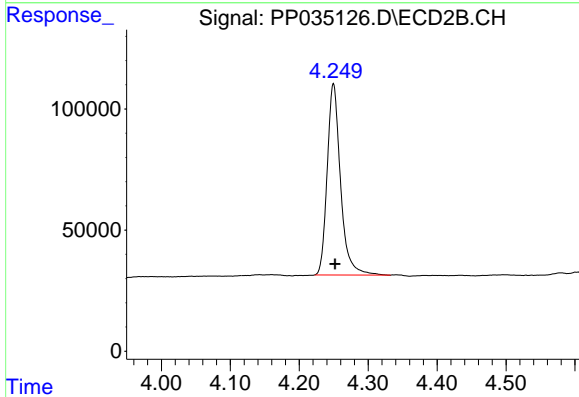




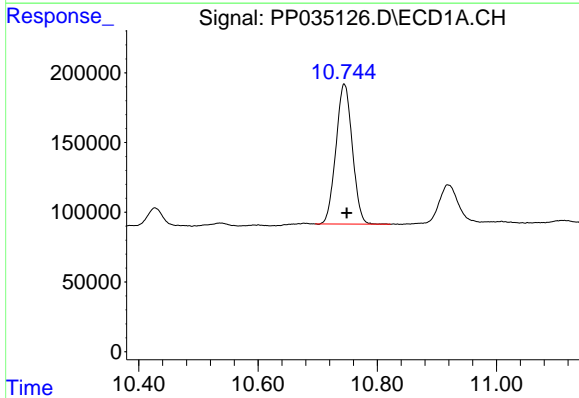
#1 Tetrachloro-m-xylene  
 R.T.: 4.834 min  
 Delta R.T.: -0.002 min  
 Response: 1761701  
 Conc: 21.62 ng/ml

**Instrument :**  
 ECD\_P  
**ClientSampled :**  
 SEDGWICK-COMP-2

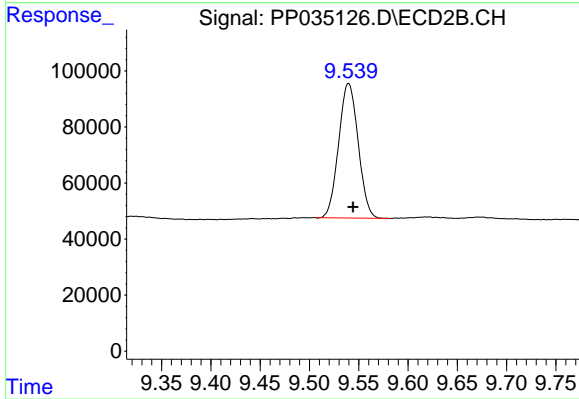
**Manual Integrations**  
**APPROVED**  
 Ankita  
 4/22/2021 2:45:56 PM



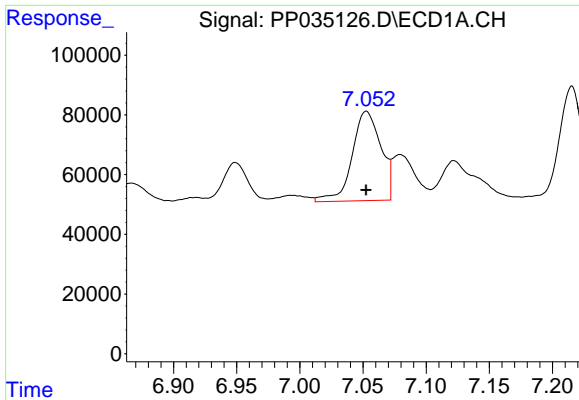
#1 Tetrachloro-m-xylene  
 R.T.: 4.250 min  
 Delta R.T.: -0.002 min  
 Response: 1063581  
 Conc: 20.65 ng/ml



#2 Decachlorobiphenyl  
 R.T.: 10.745 min  
 Delta R.T.: -0.004 min  
 Response: 1912016  
 Conc: 30.26 ng/ml



#2 Decachlorobiphenyl  
 R.T.: 9.540 min  
 Delta R.T.: -0.005 min  
 Response: 661274  
 Conc: 27.83 ng/ml

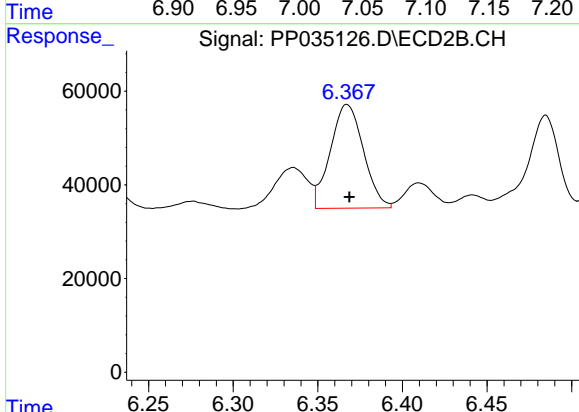


#26 AR-1254-1

R.T.: 7.053 min  
 Delta R.T.: 0.000 min  
 Response: 474457  
 Conc: 184.04 ng/ml

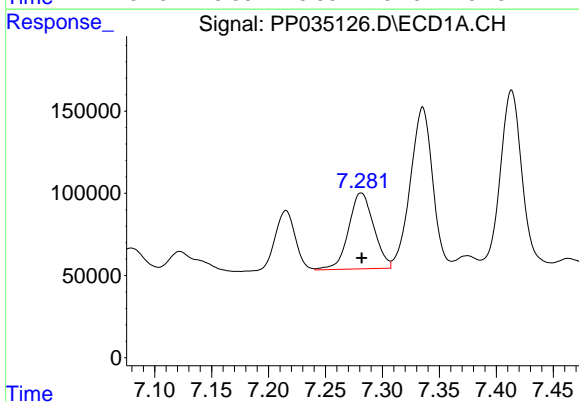
**Instrument :**  
 ECD\_P  
**ClientSampleId :**  
 SEDGWICK-COMP-2

**Manual Integrations**  
**APPROVED**  
 Ankita  
 4/22/2021 2:45:56 PM



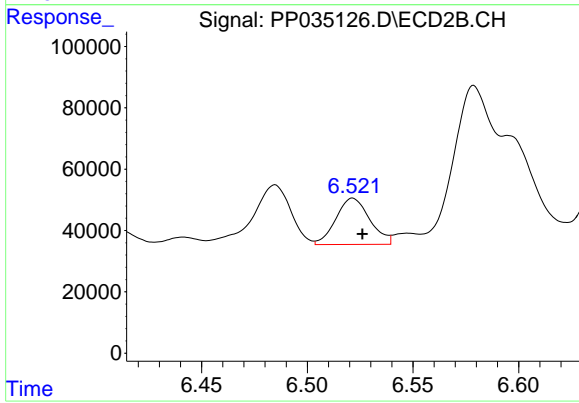
#26 AR-1254-1

R.T.: 6.367 min  
 Delta R.T.: -0.001 min  
 Response: 301366  
 Conc: 178.03 ng/ml



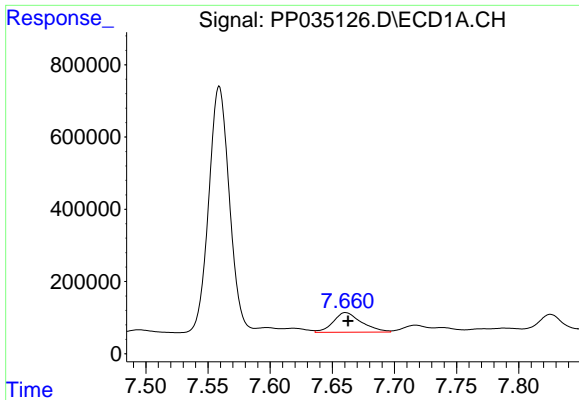
#27 AR-1254-2

R.T.: 7.281 min  
 Delta R.T.: 0.000 min  
 Response: 709984  
 Conc: 187.62 ng/ml



#27 AR-1254-2

R.T.: 6.522 min  
 Delta R.T.: -0.004 min  
 Response: 169071  
 Conc: 113.16 ng/ml

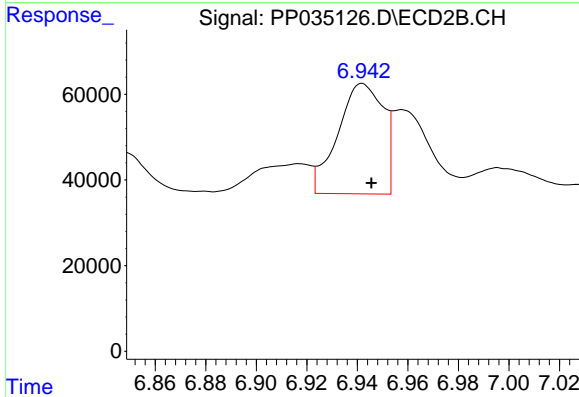


#28 AR-1254-3

R.T.: 7.661 min  
 Delta R.T.: -0.002 min  
 Response: 859826  
 Conc: 230.46 ng/ml

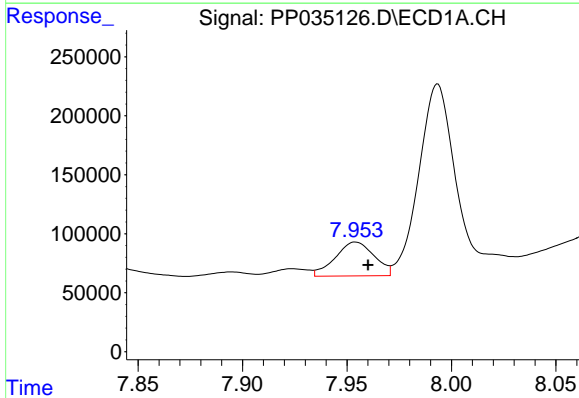
**Instrument :**  
 ECD\_P  
**ClientSampled :**  
 SEDGWICK-COMP-2

**Manual Integrations**  
**APPROVED**  
 Ankita  
 4/22/2021 2:45:56 PM



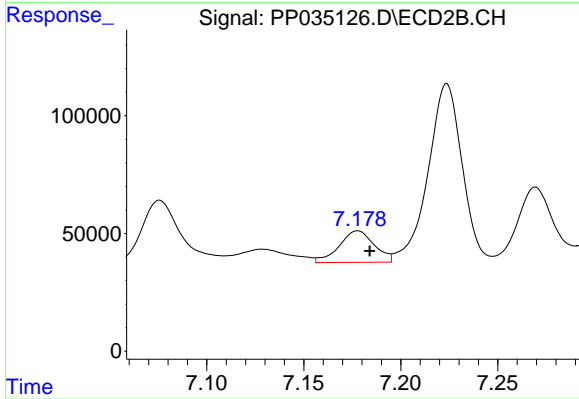
#28 AR-1254-3

R.T.: 6.942 min  
 Delta R.T.: -0.004 min  
 Response: 322876  
 Conc: 151.84 ng/ml m



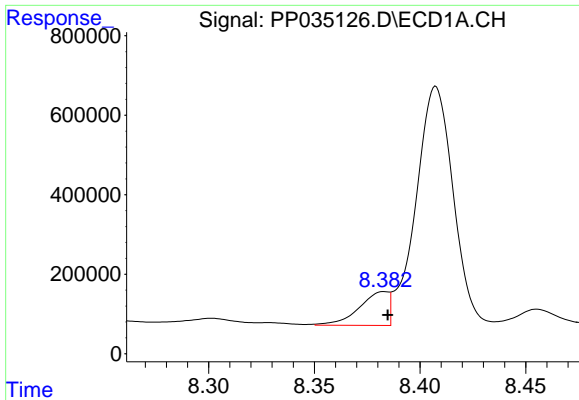
#29 AR-1254-4

R.T.: 7.954 min  
 Delta R.T.: -0.006 min  
 Response: 372824  
 Conc: 178.01 ng/ml



#29 AR-1254-4

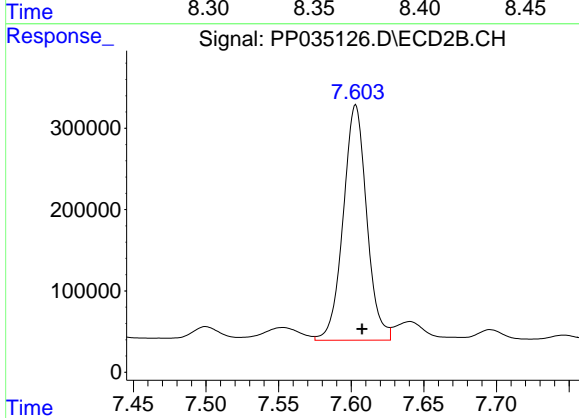
R.T.: 7.178 min  
 Delta R.T.: -0.006 min  
 Response: 169481  
 Conc: 189.12 ng/ml



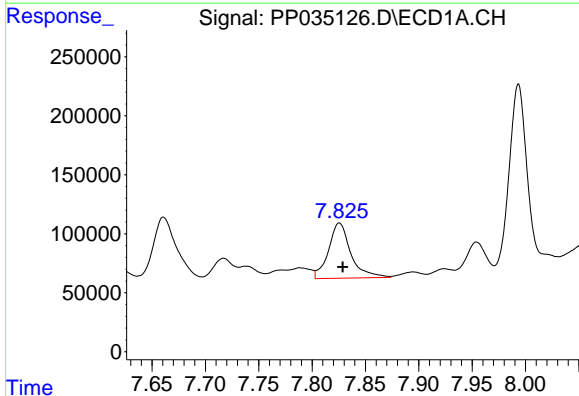
#30 AR-1254-5  
 R.T.: 8.382 min  
 Delta R.T.: -0.002 min  
 Response: 801869  
 Conc: 275.64 ng/ml m

**Instrument :**  
 ECD\_P  
**ClientSampleId :**  
 SEDGWICK-COMP-2

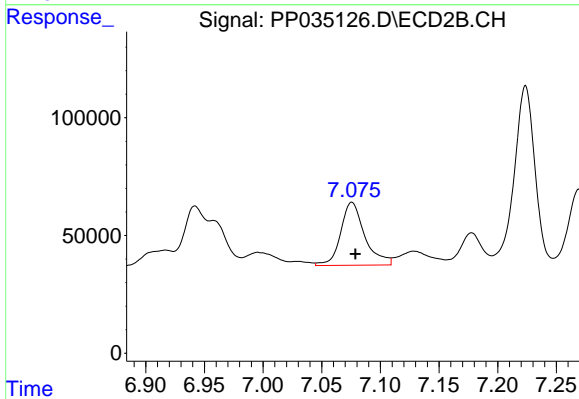
**Manual Integrations**  
**APPROVED**  
 Ankita  
 4/22/2021 2:45:56 PM



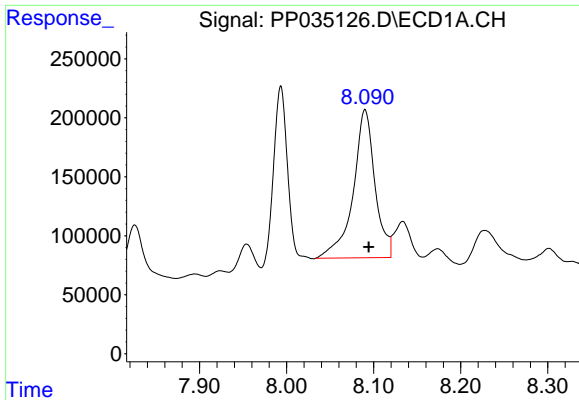
#30 AR-1254-5  
 R.T.: 7.603 min  
 Delta R.T.: -0.004 min  
 Response: 3262083  
 Conc: 1835.29 ng/ml



#31 AR-1260-1  
 R.T.: 7.826 min  
 Delta R.T.: -0.003 min  
 Response: 678883  
 Conc: 201.59 ng/ml



#31 AR-1260-1  
 R.T.: 7.076 min  
 Delta R.T.: -0.003 min  
 Response: 383664  
 Conc: 219.29 ng/ml

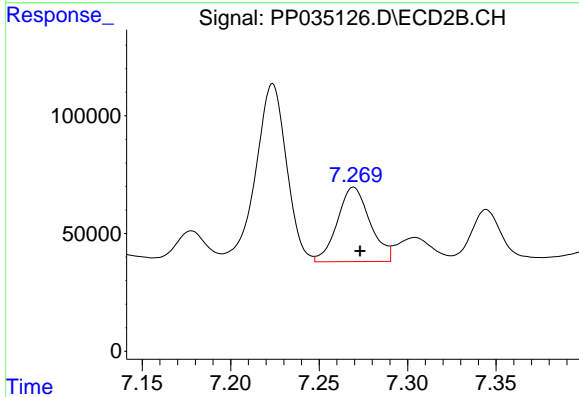


#32 AR-1260-2

R.T.: 8.090 min  
 Delta R.T.: -0.005 min  
 Response: 2191104  
 Conc: 643.60 ng/ml m

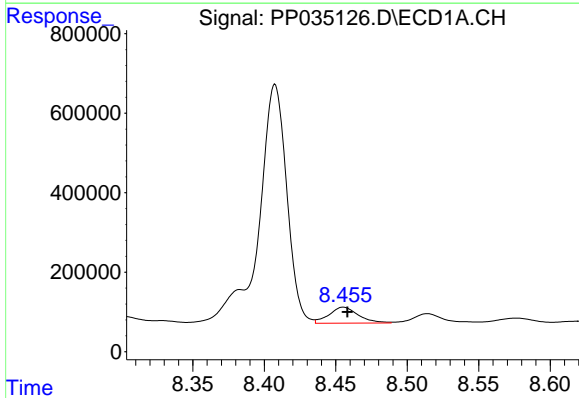
**Instrument :**  
 ECD\_P  
**ClientSampled :**  
 SEDGWICK-COMP-2

**Manual Integrations**  
**APPROVED**  
 Ankita  
 4/22/2021 2:45:56 PM



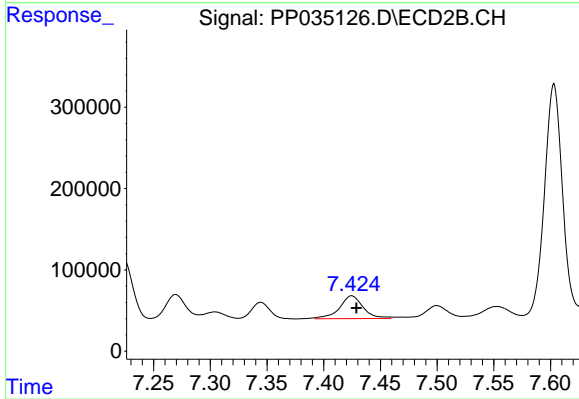
#32 AR-1260-2

R.T.: 7.269 min  
 Delta R.T.: -0.004 min  
 Response: 406780  
 Conc: 228.19 ng/ml



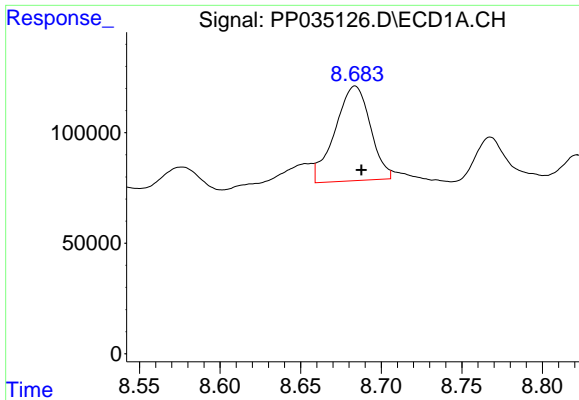
#33 AR-1260-3

R.T.: 8.455 min  
 Delta R.T.: -0.003 min  
 Response: 574126  
 Conc: 228.73 ng/ml



#33 AR-1260-3

R.T.: 7.424 min  
 Delta R.T.: -0.005 min  
 Response: 403554  
 Conc: 223.81 ng/ml m

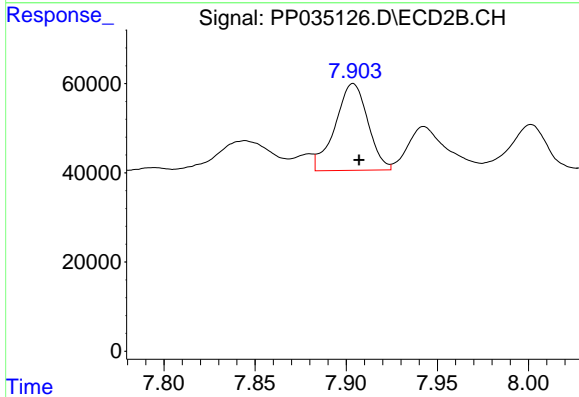


#34 AR-1260-4

R.T.: 8.683 min  
 Delta R.T.: -0.004 min  
 Response: 652172  
 Conc: 222.19 ng/ml m

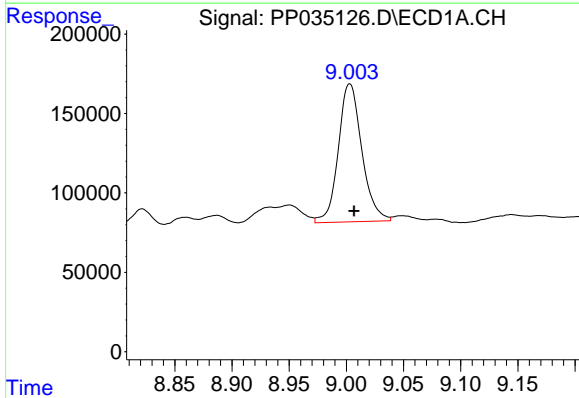
**Instrument :**  
 ECD\_P  
**ClientSampleId :**  
 SEDGWICK-COMP-2

**Manual Integrations**  
**APPROVED**  
 Ankita  
 4/22/2021 2:45:56 PM



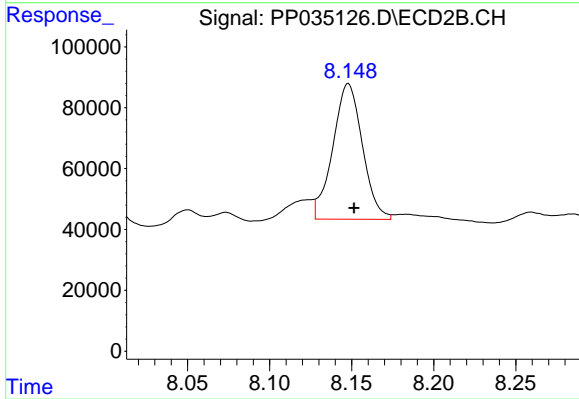
#34 AR-1260-4

R.T.: 7.903 min  
 Delta R.T.: -0.004 min  
 Response: 242271  
 Conc: 190.33 ng/ml m



#35 AR-1260-5

R.T.: 9.003 min  
 Delta R.T.: -0.004 min  
 Response: 1244682  
 Conc: 253.00 ng/ml



#35 AR-1260-5

R.T.: 8.148 min  
 Delta R.T.: -0.004 min  
 Response: 558687  
 Conc: 229.79 ng/ml m