

Data Path : Z:\pestpcbsrv\HPCHEM1\ECD_P\Data\PP042221\
 Data File : PP035148.D
 Signal(s) : Signal #1: ECD1A.CH Signal #2: ECD2B.CH
 Acq On : 22 Apr 2021 14:40
 Operator : DD\AJ
 Sample : M2090-03DL 2X
 Misc :
 ALS Vial : 6 Sample Multiplier: 1

Instrument :
 ECD_P
ClientSampleId :
 SEDGWICK-COMP-1DL

Integration File signal 1: autoint1.e
 Integration File signal 2: autoint2.e
 Quant Time: Apr 22 16:18:35 2021
 Quant Method : Z:\pestpcbsrv\HPCHEM1\ECD_P\methods\PP042121.M
 Quant Title : GC EXTRACTABLES
 QLast Update : Wed Apr 21 17:37:28 2021
 Response via : Initial Calibration
 Integrator: ChemStation 6890 Scale Mode: Small noise peaks clipped

Volume Inj. : 2 µl
 Signal #1 Phase : ZB-MR1 Signal #2 Phase: ZB-MR2
 Signal #1 Info : 30Mx0.32mmx 0.50µ Signal #2 Info : 30M x 0.32mm x 0.25µm

| Compound | RT#1 | RT#2 | Resp#1 | Resp#2 | ng/ml | ng/ml |
|-----------------------------|--------|-------|---------|---------|----------|-----------|
| ----- | | | | | | |
| System Monitoring Compounds | | | | | | |
| 1) SA Tetrachlo... | 4.837 | 4.249 | 1385375 | 852712 | 17.001 | 16.559 |
| 2) SA Decachlor... | 10.749 | 9.540 | 1508891 | 543872 | 23.877 | 22.890 |
| Target Compounds | | | | | | |
| 26) L6 AR-1254-1 | 7.053 | 6.365 | 1036778 | 620128 | 402.168 | 366.343 |
| 27) L6 AR-1254-2 | 7.282 | 6.521 | 1906731 | 774368 | 503.880 | 518.277 |
| 28) L6 AR-1254-3 | 7.663 | 6.942 | 1865248 | 1360898 | 499.947 | 639.984 # |
| 29) L6 AR-1254-4 | 7.958 | 7.178 | 1295374 | 573864 | 618.487 | 640.360 |
| 30) L6 AR-1254-5 | 8.384 | 7.603 | 3011958 | 1496688 | 1035.334 | 842.054 |
| 31) L7 AR-1260-1 | 7.828 | 7.075 | 1917435 | 1052584 | 569.356 | 601.629 |
| 32) L7 AR-1260-2 | 8.093 | 7.269 | 2621548 | 1258986 | 770.041 | 706.256 |
| 33) L7 AR-1260-3 | 8.457 | 7.424 | 1149989 | 919293 | 458.161 | 509.835 |
| 34) L7 AR-1260-4 | 8.686 | 7.903 | 1670871 | 530705 | 569.242 | 416.928 # |
| 35) L7 AR-1260-5 | 9.006 | 8.147 | 2818846 | 1393428 | 572.978 | 573.128 |
| ----- | | | | | | |

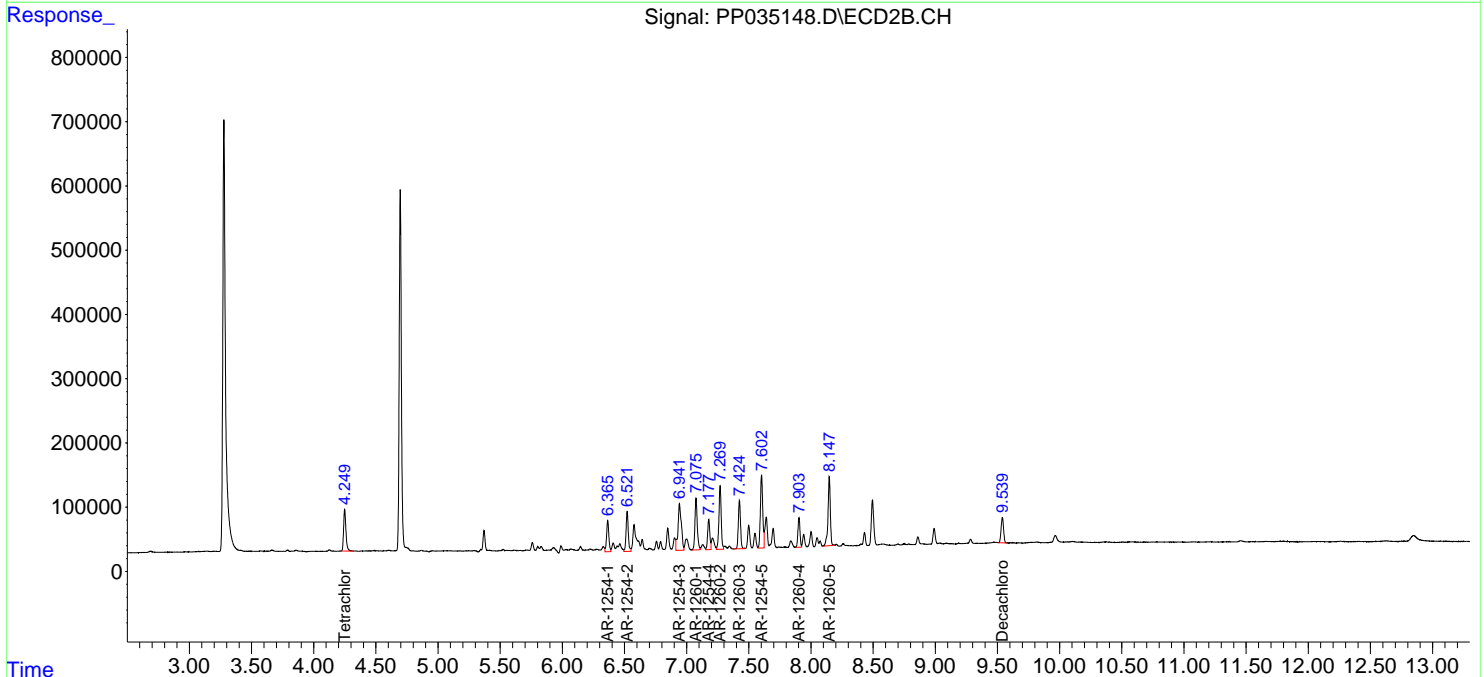
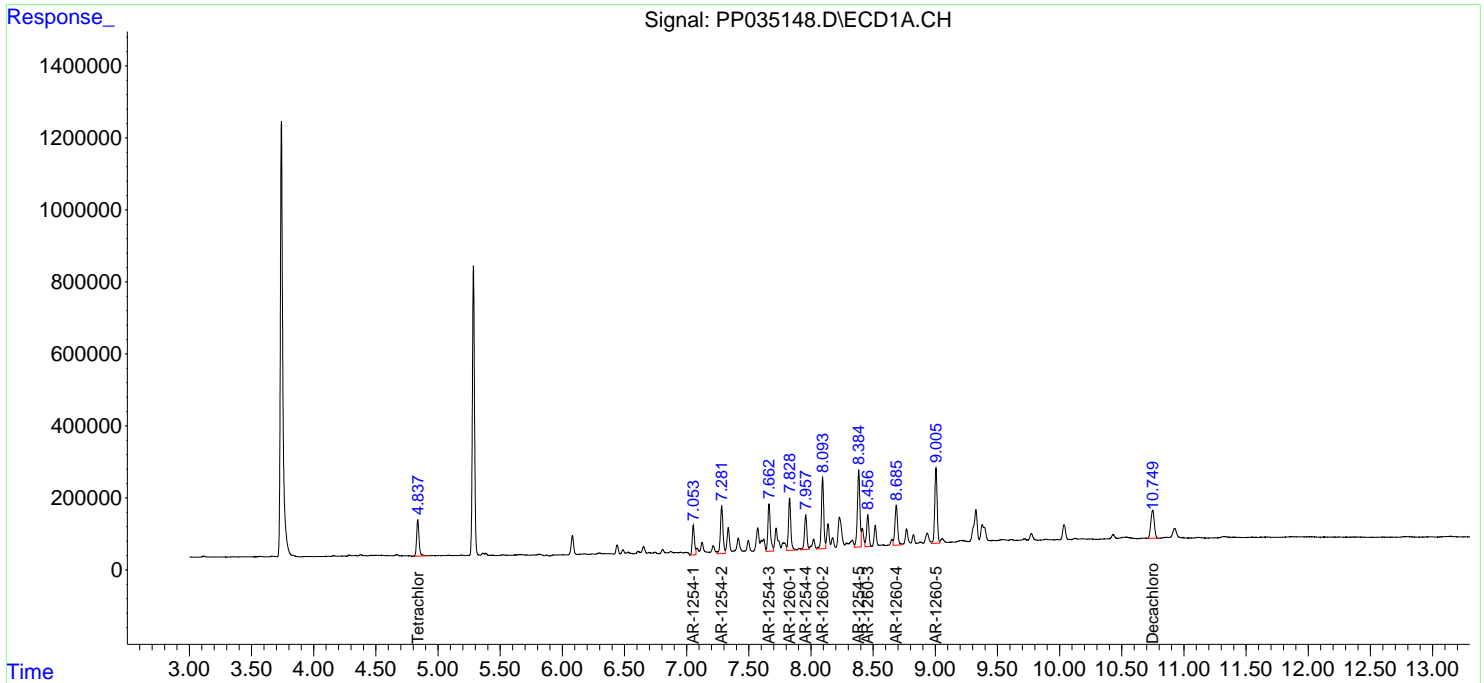
(f)=RT Delta > 1/2 Window (#)=Amounts differ by > 25% (m)=manual int.

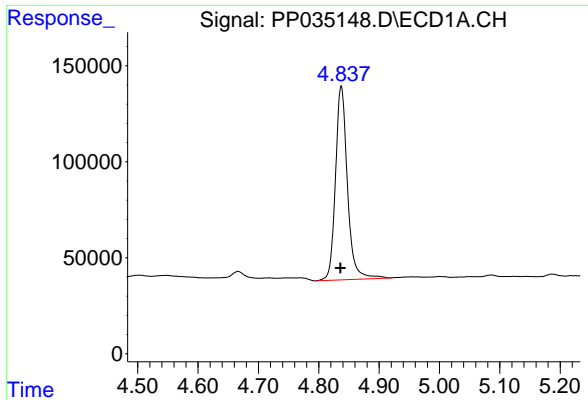
Data Path : Z:\pestpcbsrv\HPCHEM1\ECD_P\Data\PP042221\
 Data File : PP035148.D
 Signal(s) : Signal #1: ECD1A.CH Signal #2: ECD2B.CH
 Acq On : 22 Apr 2021 14:40
 Operator : DD\AJ
 Sample : M2090-03DL 2X
 Misc :
 ALS Vial : 6 Sample Multiplier: 1

Instrument :
 ECD_P
 Client Sampled :
 SEDGWICK-COMP-1DL

Integration File signal 1: autoint1.e
 Integration File signal 2: autoint2.e
 Quant Time: Apr 22 16:18:35 2021
 Quant Method : Z:\pestpcbsrv\HPCHEM1\ECD_P\methods\PP042121.M
 Quant Title : GC EXTRACTABLES
 QLast Update : Wed Apr 21 17:37:28 2021
 Response via : Initial Calibration
 Integrator: ChemStation 6890 Scale Mode: Small noise peaks clipped

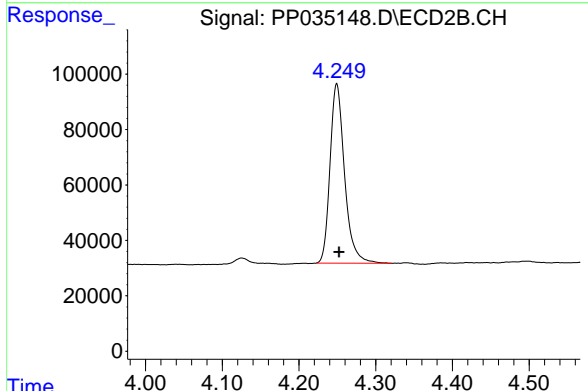
Volume Inj. : 2 µl
 Signal #1 Phase : ZB-MR1 Signal #2 Phase: ZB-MR2
 Signal #1 Info : 30Mx0.32mmx 0.50µ Signal #2 Info : 30M x 0.32mm x 0.25µm



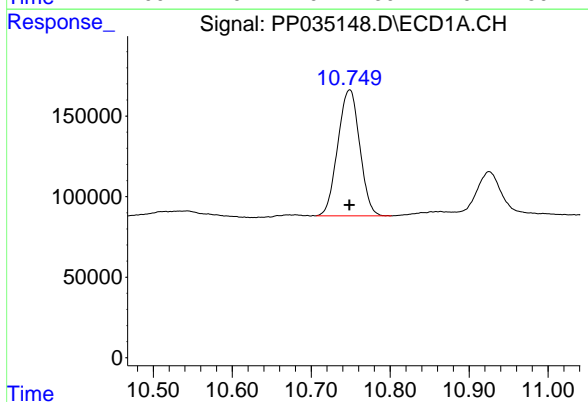


#1 Tetrachloro-m-xylene
 R.T.: 4.837 min
 Delta R.T.: 0.001 min
 Response: 1385375
 Conc: 17.00 ng/ml

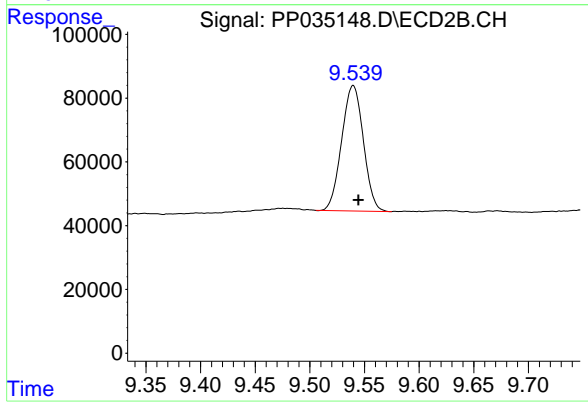
Instrument :
 ECD_P
ClientSampleId :
 SEDGWICK-COMP-1DL



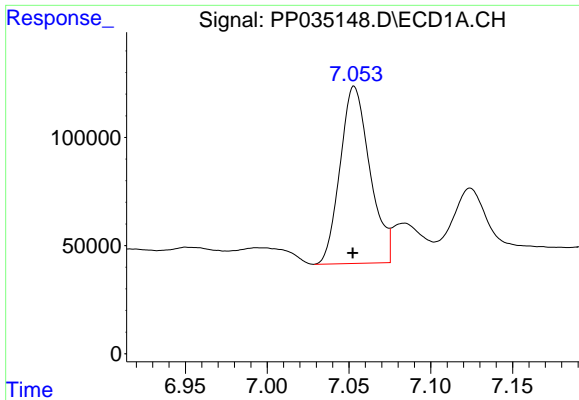
#1 Tetrachloro-m-xylene
 R.T.: 4.249 min
 Delta R.T.: -0.003 min
 Response: 852712
 Conc: 16.56 ng/ml



#2 Decachlorobiphenyl
 R.T.: 10.749 min
 Delta R.T.: 0.000 min
 Response: 1508891
 Conc: 23.88 ng/ml



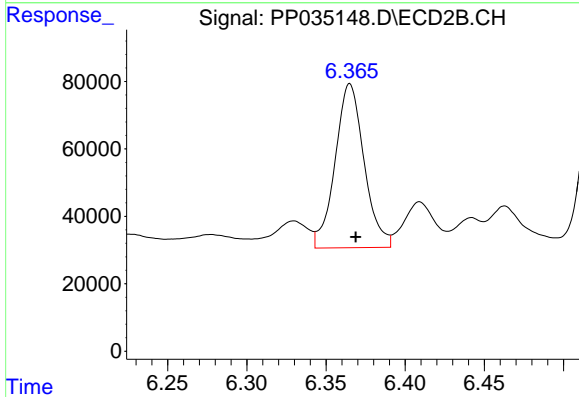
#2 Decachlorobiphenyl
 R.T.: 9.540 min
 Delta R.T.: -0.005 min
 Response: 543872
 Conc: 22.89 ng/ml



#26 AR-1254-1

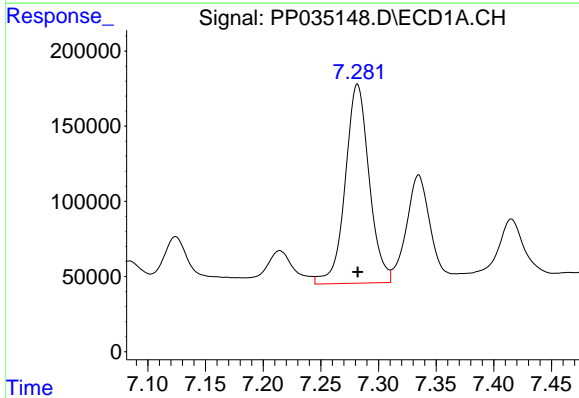
R.T.: 7.053 min
 Delta R.T.: 0.000 min
 Response: 1036778
 Conc: 402.17 ng/ml

Instrument :
 ECD_P
 ClientSampleId :
 SEDGWICK-COMP-1DL



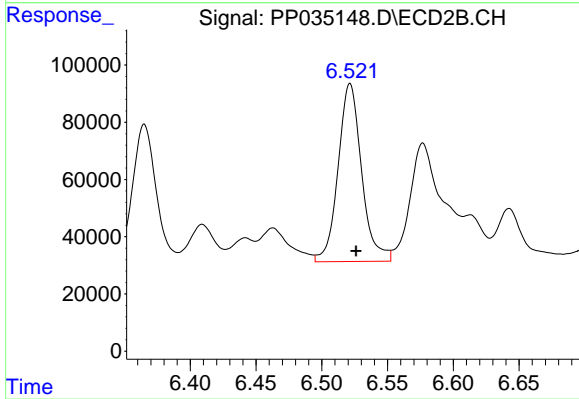
#26 AR-1254-1

R.T.: 6.365 min
 Delta R.T.: -0.004 min
 Response: 620128
 Conc: 366.34 ng/ml



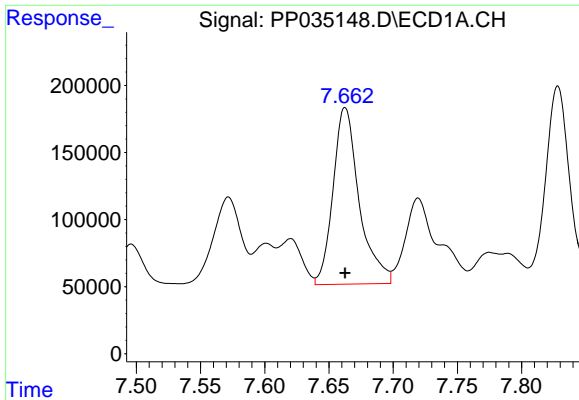
#27 AR-1254-2

R.T.: 7.282 min
 Delta R.T.: 0.000 min
 Response: 1906731
 Conc: 503.88 ng/ml



#27 AR-1254-2

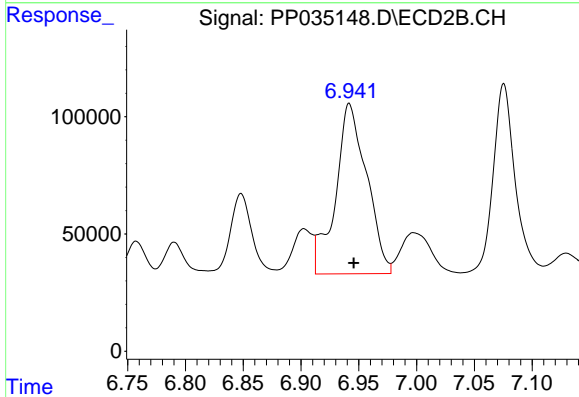
R.T.: 6.521 min
 Delta R.T.: -0.005 min
 Response: 774368
 Conc: 518.28 ng/ml



#28 AR-1254-3

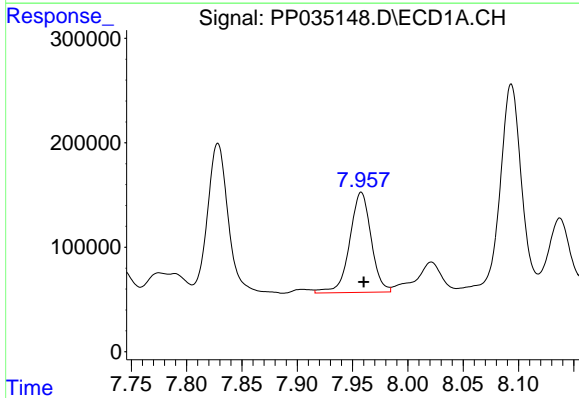
R.T.: 7.663 min
 Delta R.T.: 0.000 min
 Response: 1865248
 Conc: 499.95 ng/ml

Instrument :
 ECD_P
ClientSampleId :
 SEDGWICK-COMP-1DL



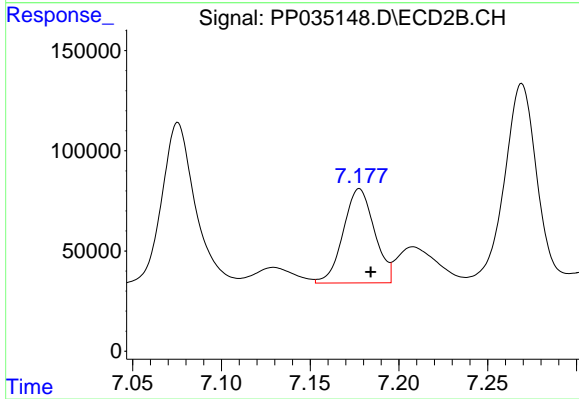
#28 AR-1254-3

R.T.: 6.942 min
 Delta R.T.: -0.004 min
 Response: 1360898
 Conc: 639.98 ng/ml



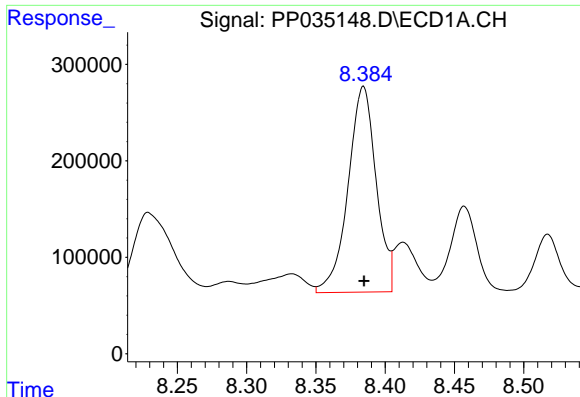
#29 AR-1254-4

R.T.: 7.958 min
 Delta R.T.: -0.002 min
 Response: 1295374
 Conc: 618.49 ng/ml



#29 AR-1254-4

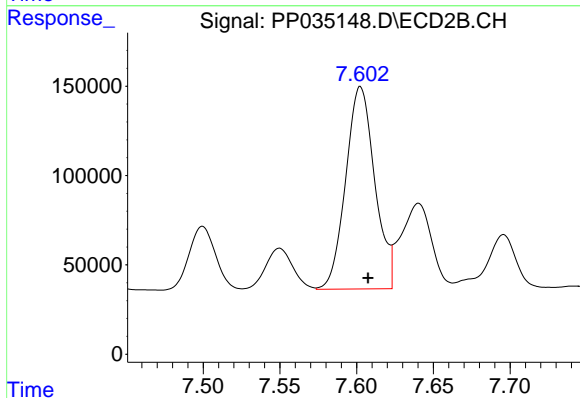
R.T.: 7.178 min
 Delta R.T.: -0.006 min
 Response: 573864
 Conc: 640.36 ng/ml



#30 AR-1254-5

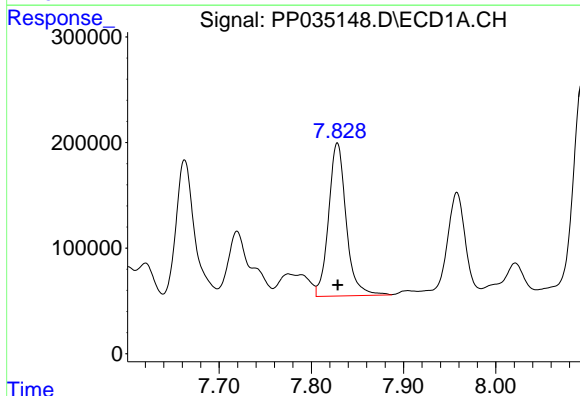
R.T.: 8.384 min
 Delta R.T.: 0.000 min
 Response: 3011958
 Conc: 1035.33 ng/ml

Instrument :
 ECD_P
 ClientSampleId :
 SEDGWICK-COMP-1DL



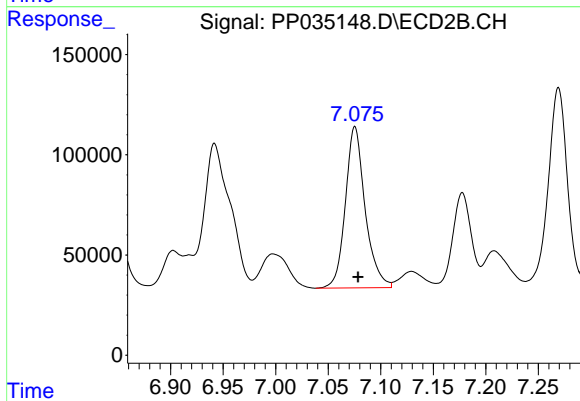
#30 AR-1254-5

R.T.: 7.603 min
 Delta R.T.: -0.005 min
 Response: 1496688
 Conc: 842.05 ng/ml



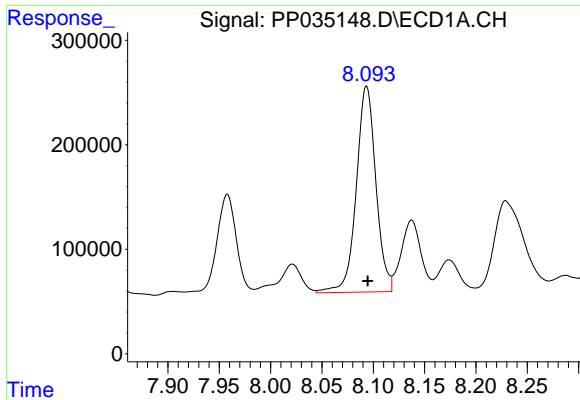
#31 AR-1260-1

R.T.: 7.828 min
 Delta R.T.: 0.000 min
 Response: 1917435
 Conc: 569.36 ng/ml



#31 AR-1260-1

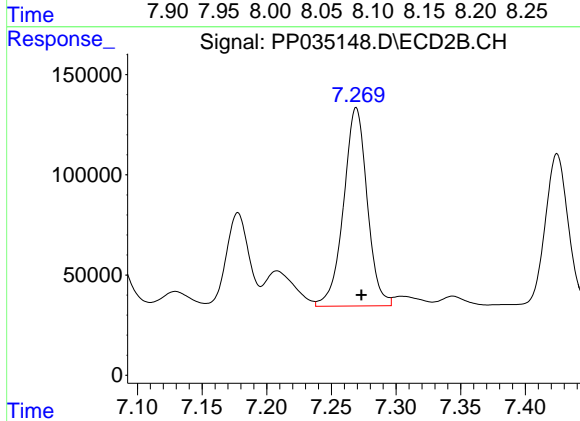
R.T.: 7.075 min
 Delta R.T.: -0.003 min
 Response: 1052584
 Conc: 601.63 ng/ml



#32 AR-1260-2

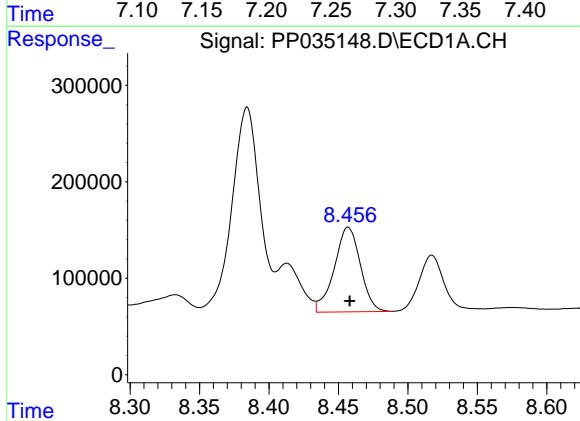
R.T.: 8.093 min
 Delta R.T.: -0.001 min
 Response: 2621548
 Conc: 770.04 ng/ml

Instrument :
 ECD_P
 ClientSampleId :
 SEDGWICK-COMP-1DL



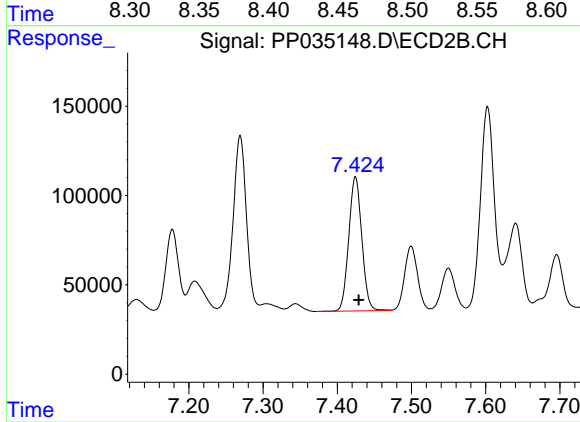
#32 AR-1260-2

R.T.: 7.269 min
 Delta R.T.: -0.004 min
 Response: 1258986
 Conc: 706.26 ng/ml



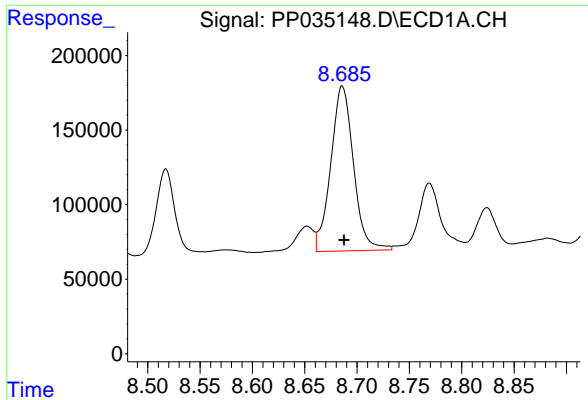
#33 AR-1260-3

R.T.: 8.457 min
 Delta R.T.: -0.001 min
 Response: 1149989
 Conc: 458.16 ng/ml



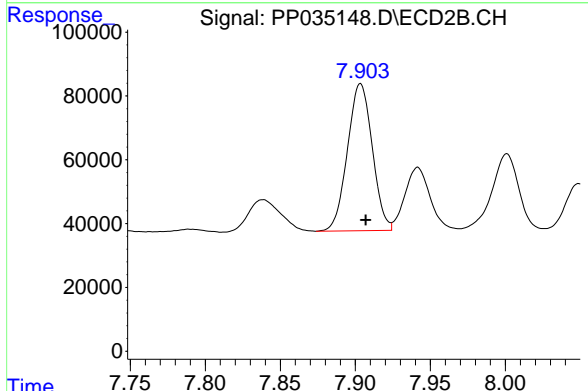
#33 AR-1260-3

R.T.: 7.424 min
 Delta R.T.: -0.005 min
 Response: 919293
 Conc: 509.83 ng/ml

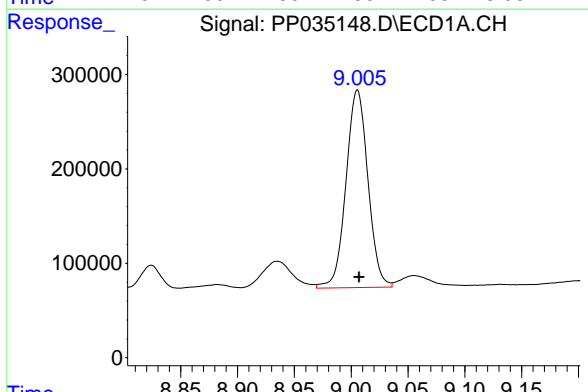


#34 AR-1260-4
 R.T.: 8.686 min
 Delta R.T.: -0.002 min
 Response: 1670871
 Conc: 569.24 ng/ml

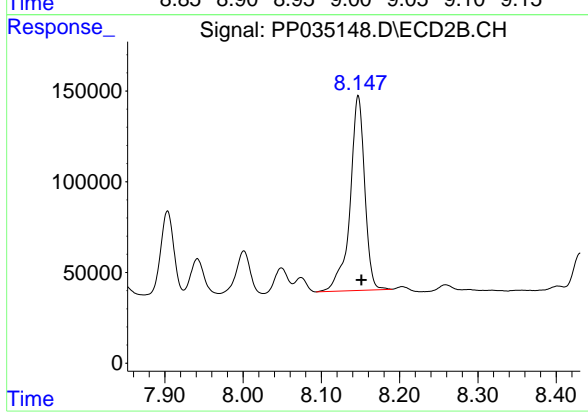
Instrument :
 ECD_P
ClientSampleId :
 SEDGWICK-COMP-1DL



#34 AR-1260-4
 R.T.: 7.903 min
 Delta R.T.: -0.004 min
 Response: 530705
 Conc: 416.93 ng/ml



#35 AR-1260-5
 R.T.: 9.006 min
 Delta R.T.: -0.001 min
 Response: 2818846
 Conc: 572.98 ng/ml



#35 AR-1260-5
 R.T.: 8.147 min
 Delta R.T.: -0.004 min
 Response: 1393428
 Conc: 573.13 ng/ml