

Data Path : Z:\pestpcbsrv\HPCHEM1\ECD_P\Data\PP042222\
 Data File : PP046479.D
 Signal(s) : Signal #1: ECD1A.ch Signal #2: ECD2B.ch
 Acq On : 23 Apr 2022 03:38
 Operator : YP\AJ
 Sample : N2526-04
 Misc :
 ALS Vial : 39 Sample Multiplier: 1

Instrument :
 ECD_P
 ClientSampleId :
 MH-5S

Integration File signal 1: autoint1.e
 Integration File signal 2: autoint2.e
 Quant Time: Apr 24 20:51:01 2022
 Quant Method : Z:\pestpcbsrv\HPCHEM1\ECD_P\methods\PP042222.M
 Quant Title : GC EXTRACTABLES
 QLast Update : Fri Apr 22 19:00:06 2022
 Response via : Initial Calibration
 Integrator: ChemStation

Volume Inj. : 2 µl
 Signal #1 Phase : ZB-MR1 Signal #2 Phase: ZB-MR2
 Signal #1 Info : 30Mx0.32mmx 0.50µ Signal #2 Info : 30M x 0.32mm x 0.25µm

Compound	RT#1	RT#2	Resp#1	Resp#2	ng/ml	ng/ml
System Monitoring Compounds						
1) SA Tetrachlo...	3.867	3.129	50302250	73425135	20.838	22.383
2) SA Decachlor...	9.953	8.455	32560991	49996285	22.128	20.960
Target Compounds						
3) L1 AR-1016-1	5.115	0.000	2894730	0	38.442	N.D. #
4) L1 AR-1016-2	5.138	0.000	2196070	0	19.286	N.D. #
5) L1 AR-1016-3	5.202	0.000	2766116	0	38.695	N.D. #
6) L1 AR-1016-4	5.311	0.000	28548967	0	474.851	N.D. #
8) L2 AR-1221-1	4.089	3.361	3178865	1006277	115.267	22.789 #
9) L2 AR-1221-2	4.194	3.422f	805276	5543806	39.663	164.139 #
10) L2 AR-1221-3	4.265	0.000	204798	0	3.142	N.D. #
11) L3 AR-1232-1	4.265	0.000	204798	0	4.183	N.D. #
12) L3 AR-1232-2	4.830	0.000	2041161	0	84.089	N.D. #
13) L3 AR-1232-3	5.138	0.000	2196070	0	46.496	N.D. #
14) L3 AR-1232-4	5.311	0.000	28548967	0	1173.299	N.D. #
16) L4 AR-1242-1	5.115	0.000	2894730	0	45.655	N.D. #
17) L4 AR-1242-2	5.138	0.000	2196070	0	23.051	N.D. #
18) L4 AR-1242-3	5.202	0.000	2766116	0	46.206	N.D. #
19) L4 AR-1242-4	5.311	0.000	28548967	0	564.471	N.D. #
20) L4 AR-1242-5	6.115	0.000	87077	0	1.728	N.D. #
21) L5 AR-1248-1	5.115	0.000	2894730	0	69.260	N.D. #
24) L5 AR-1248-4	6.048f	0.000	414012	0	5.399	N.D. #
25) L5 AR-1248-5	6.115	0.000	87077	0	1.120	N.D. #
26) L6 AR-1254-1	6.048	0.000	414012	0	7.128	N.D. #
27) L6 AR-1254-2	6.267	0.000	139845	0	1.135	N.D. #
28) L6 AR-1254-3	6.684	0.000	258261	0	1.952	N.D. #
29) L6 AR-1254-4	6.979	5.924f	96970	305602	0.976	1.781 #
30) L6 AR-1254-5	7.445	6.379f	376563	67180	4.281	0.308 #
31) L7 AR-1260-1	6.857	0.000	84975	0	1.007	N.D. #
32) L7 AR-1260-2	7.133	6.060	44328	4604139	0.440	22.634 #
33) L7 AR-1260-3	7.531	6.200	151710	191266	1.873	1.120 #
34) L7 AR-1260-4	7.767	6.710	6608391	298285	82.967	2.052 #
35) L7 AR-1260-5	8.123	6.982	76044	155337	0.479	0.442
36) L8 AR-1262-1	7.531	6.447	151710	78603	1.255	0.318 #
37) L8 AR-1262-2	8.123	6.710	76044	298285	0.395	1.543 #
38) L8 AR-1262-3	8.440	7.290	141623	244358	1.055	1.505 #
39) L8 AR-1262-4	8.542	7.341f	242701	279821	3.854	0.977 #
40) L8 AR-1262-5	9.210	7.887f	67168	228749	0.974	1.743 #
41) L9 AR-1268-1	8.440	7.290	141623	244358	0.589	0.510
42) L9 AR-1268-2	8.542	7.341f	242701	279821	1.096	0.661 #
43) L9 AR-1268-3	8.765	7.580	36101	40232	0.188	0.114 #
44) L9 AR-1268-4	9.210	7.887f	67168	228749	0.871	1.555 #
45) L9 AR-1268-5	9.628	8.202	55800	231347	0.100	0.226 #

Data Path : Z:\pestpcbsrv\HPCHEM1\ECD_P\Data\PP042222\
 Data File : PP046479.D
 Signal(s) : Signal #1: ECD1A.ch Signal #2: ECD2B.ch
 Acq On : 23 Apr 2022 03:38
 Operator : YP\AJ
 Sample : N2526-04
 Misc :
 ALS Vial : 39 Sample Multiplier: 1

Instrument :
 ECD_P
 ClientSampleId :
 MH-5S

Integration File signal 1: autoint1.e
 Integration File signal 2: autoint2.e
 Quant Time: Apr 24 20:51:01 2022
 Quant Method : Z:\pestpcbsrv\HPCHEM1\ECD_P\methods\PP042222.M
 Quant Title : GC EXTRACTABLES
 QLast Update : Fri Apr 22 19:00:06 2022
 Response via : Initial Calibration
 Integrator: ChemStation

Volume Inj. : 2 µl
 Signal #1 Phase : ZB-MR1 Signal #2 Phase: ZB-MR2
 Signal #1 Info : 30Mx0.32mmx 0.50µ Signal #2 Info : 30M x 0.32mm x 0.25µm

Compound	RT#1	RT#2	Resp#1	Resp#2	ng/ml	ng/ml

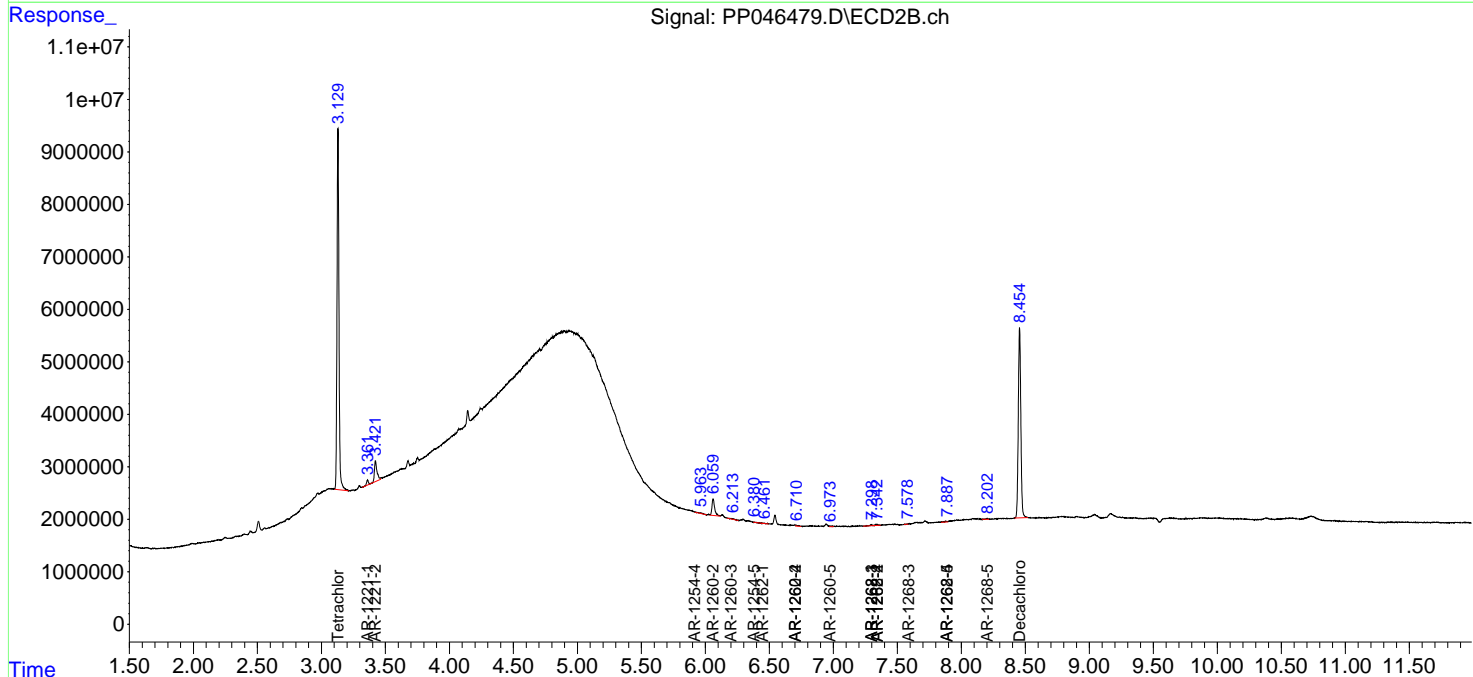
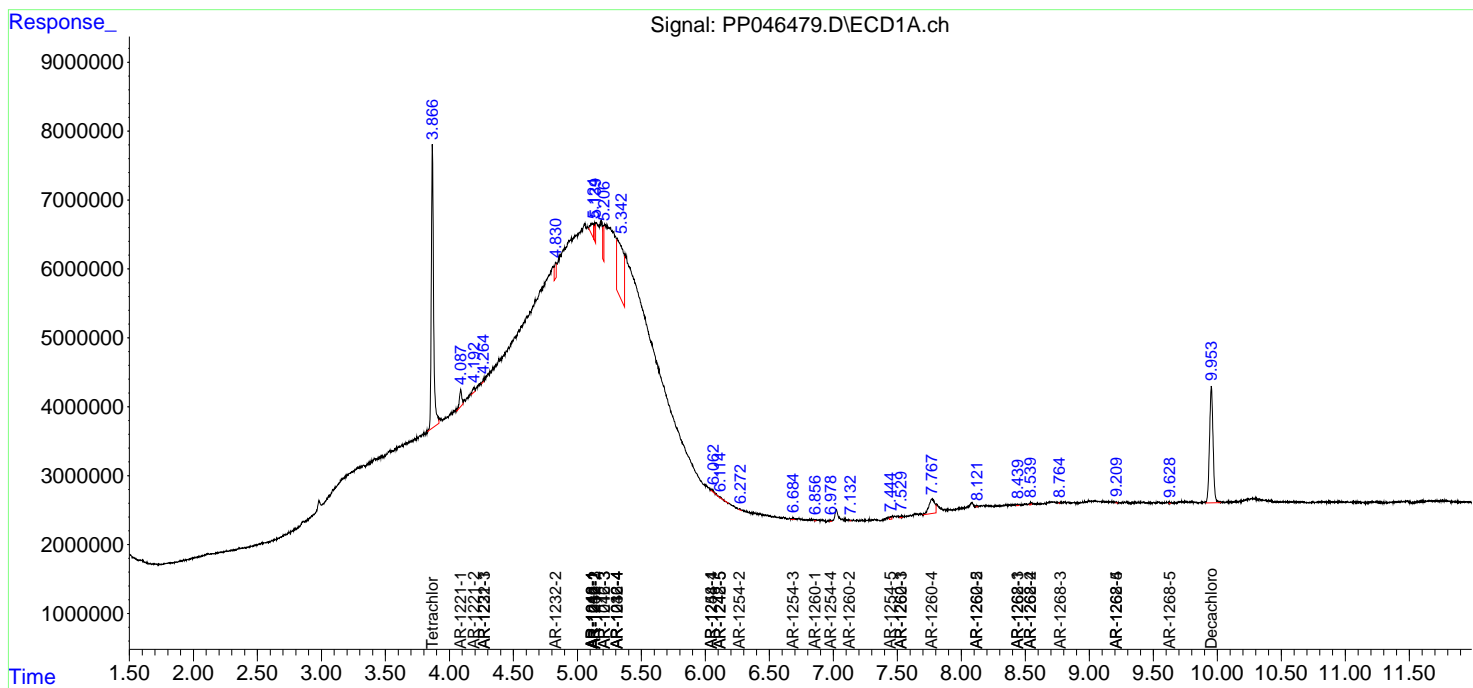
(f)=RT Delta > 1/2 Window (#)=Amounts differ by > 25% (m)=manual int.

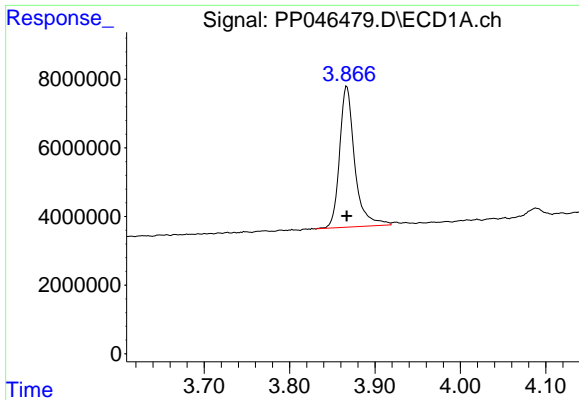
Data Path : Z:\pestpcbsrv\HPCHEM1\ECD_P\Data\PP042222\
 Data File : PP046479.D
 Signal(s) : Signal #1: ECD1A.ch Signal #2: ECD2B.ch
 Acq On : 23 Apr 2022 03:38
 Operator : YP\AJ
 Sample : N2526-04
 Misc :
 ALS Vial : 39 Sample Multiplier: 1

Instrument :
 ECD_P
 ClientSampleId :
 MH-5S

Integration File signal 1: autoint1.e
 Integration File signal 2: autoint2.e
 Quant Time: Apr 24 20:51:01 2022
 Quant Method : Z:\pestpcbsrv\HPCHEM1\ECD_P\methods\PP042222.M
 Quant Title : GC EXTRACTABLES
 QLast Update : Fri Apr 22 19:00:06 2022
 Response via : Initial Calibration
 Integrator: ChemStation

Volume Inj. : 2 µl
 Signal #1 Phase : ZB-MR1 Signal #2 Phase: ZB-MR2
 Signal #1 Info : 30Mx0.32mmx 0.50µ Signal #2 Info : 30M x 0.32mm x 0.25µm

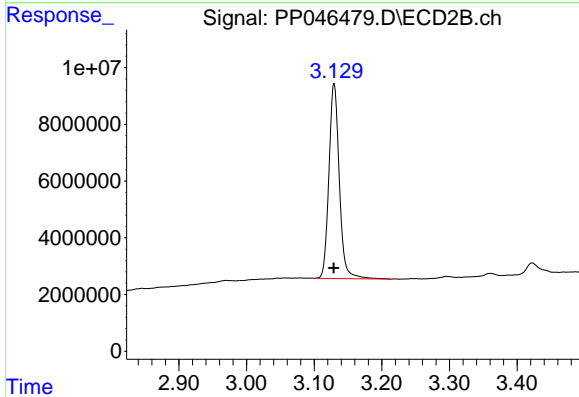




#1 Tetrachloro-m-xylene

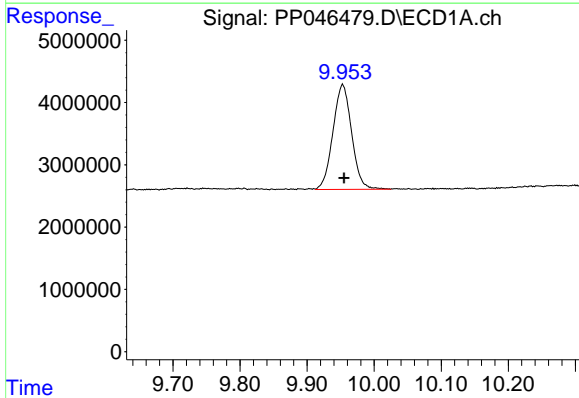
R.T.: 3.867 min
 Delta R.T.: 0.000 min
 Response: 50302250
 Conc: 20.84 ng/ml

Instrument :
 ECD_P
 ClientSampleId :
 MH-5S



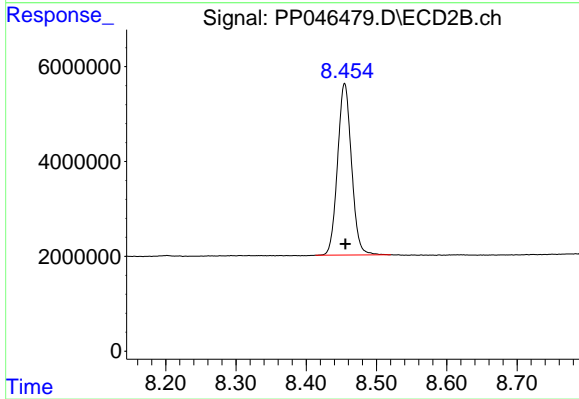
#1 Tetrachloro-m-xylene

R.T.: 3.129 min
 Delta R.T.: 0.000 min
 Response: 73425135
 Conc: 22.38 ng/ml



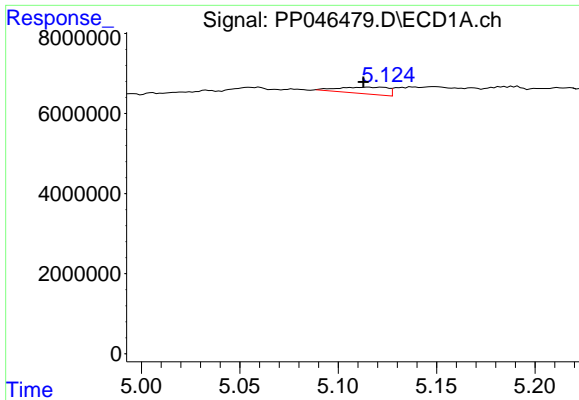
#2 Decachlorobiphenyl

R.T.: 9.953 min
 Delta R.T.: -0.002 min
 Response: 32560991
 Conc: 22.13 ng/ml



#2 Decachlorobiphenyl

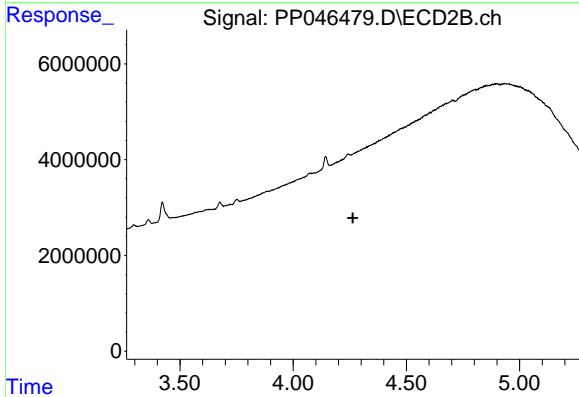
R.T.: 8.455 min
 Delta R.T.: -0.001 min
 Response: 49996285
 Conc: 20.96 ng/ml



#3 AR-1016-1

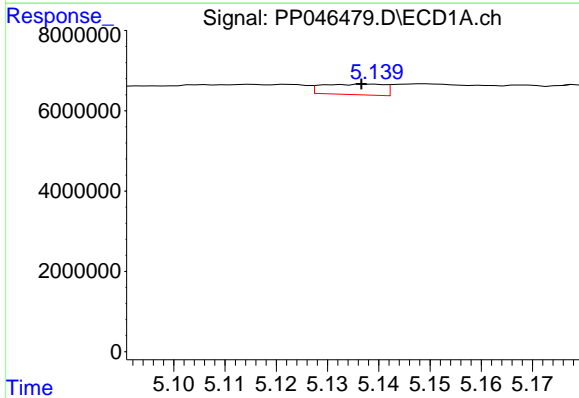
R.T.: 5.115 min
 Delta R.T.: 0.002 min
 Response: 2894730
 Conc: 38.44 ng/ml

Instrument :
 ECD_P
 ClientSampleId :
 MH-5S



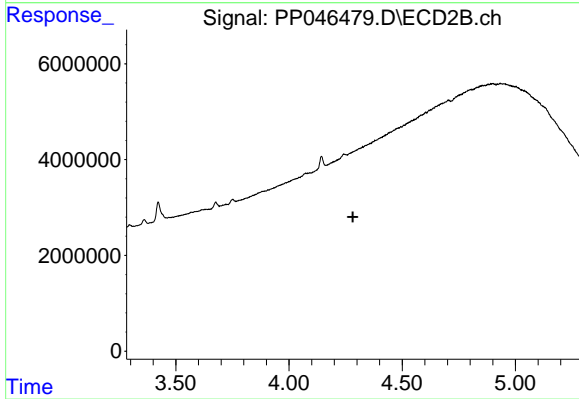
#3 AR-1016-1

R.T.: 0.000 min
 Exp R.T. : 4.264 min
 Response: 0
 Conc: N.D.



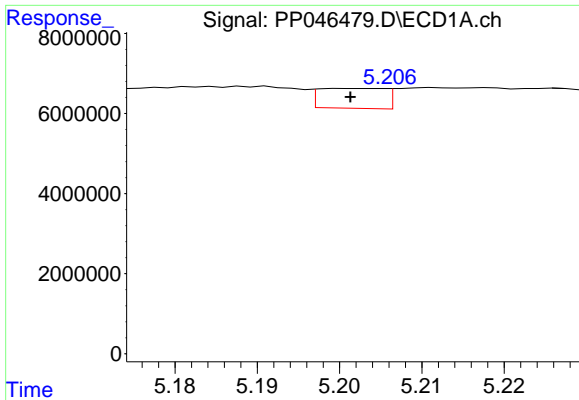
#4 AR-1016-2

R.T.: 5.138 min
 Delta R.T.: 0.001 min
 Response: 2196070
 Conc: 19.29 ng/ml



#4 AR-1016-2

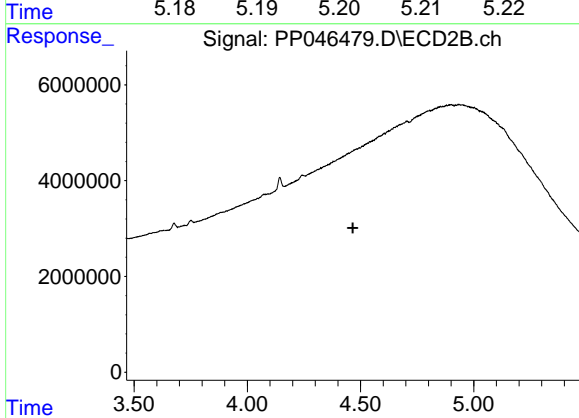
R.T.: 0.000 min
 Exp R.T. : 4.282 min
 Response: 0
 Conc: N.D.



#5 AR-1016-3

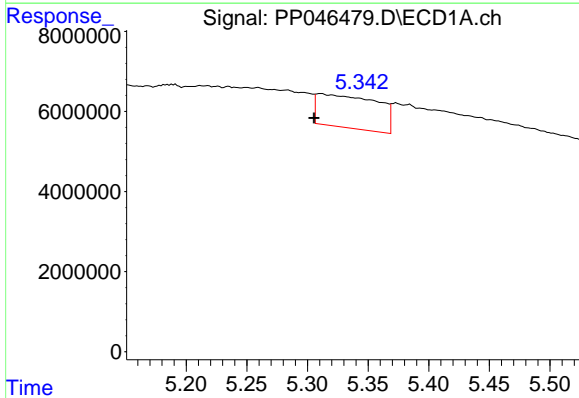
R.T.: 5.202 min
 Delta R.T.: 0.000 min
 Response: 2766116
 Conc: 38.69 ng/ml

Instrument :
 ECD_P
 ClientSampleId :
 MH-5S



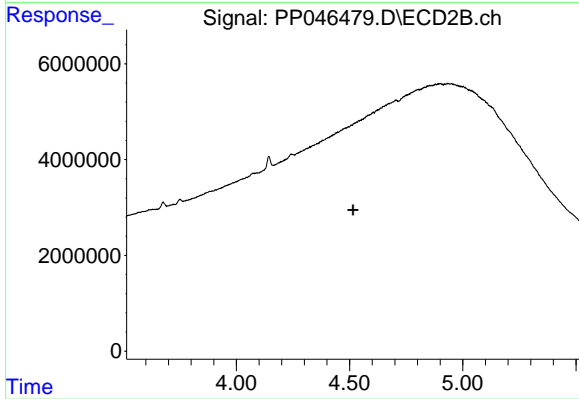
#5 AR-1016-3

R.T.: 0.000 min
 Exp R.T. : 4.466 min
 Response: 0
 Conc: N.D.



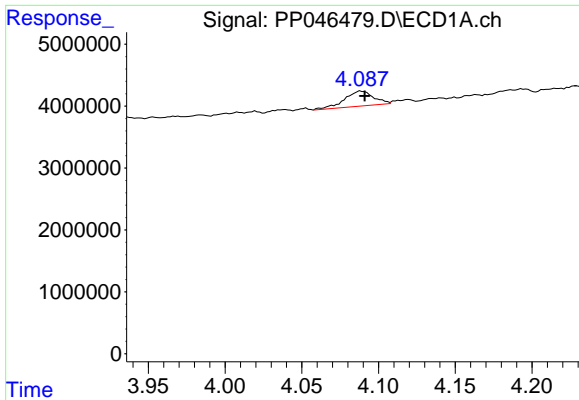
#6 AR-1016-4

R.T.: 5.311 min
 Delta R.T.: 0.006 min
 Response: 28548967
 Conc: 474.85 ng/ml



#6 AR-1016-4

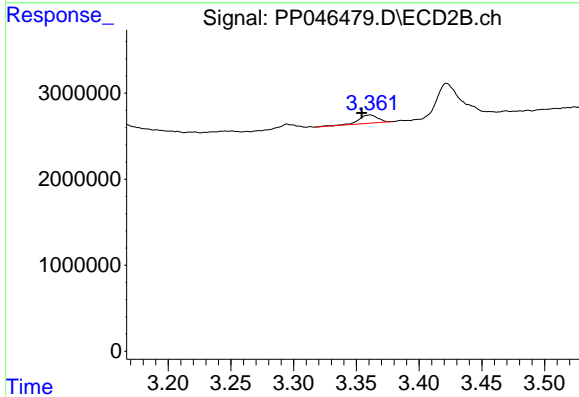
R.T.: 0.000 min
 Exp R.T. : 4.515 min
 Response: 0
 Conc: N.D.



#8 AR-1221-1

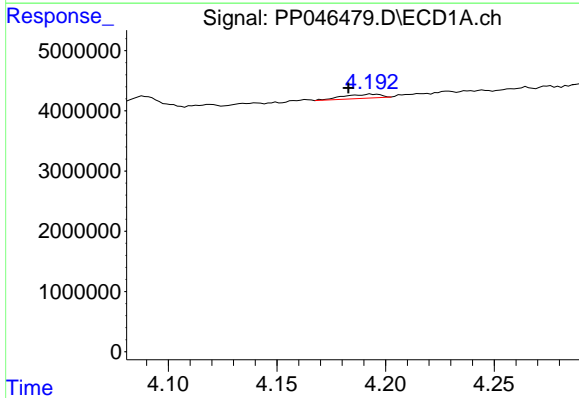
R.T.: 4.089 min
 Delta R.T.: -0.002 min
 Response: 3178865
 Conc: 115.27 ng/ml

Instrument :
 ECD_P
 ClientSampleId :
 MH-5S



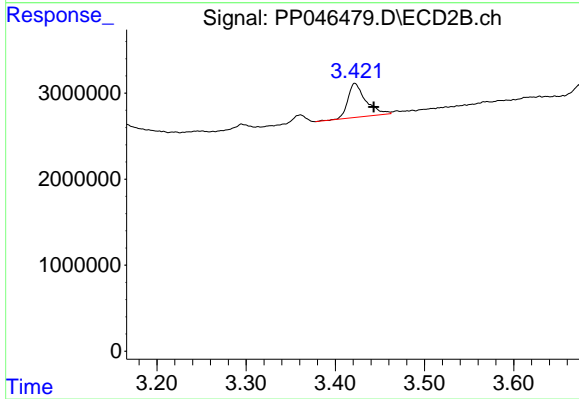
#8 AR-1221-1

R.T.: 3.361 min
 Delta R.T.: 0.006 min
 Response: 1006277
 Conc: 22.79 ng/ml



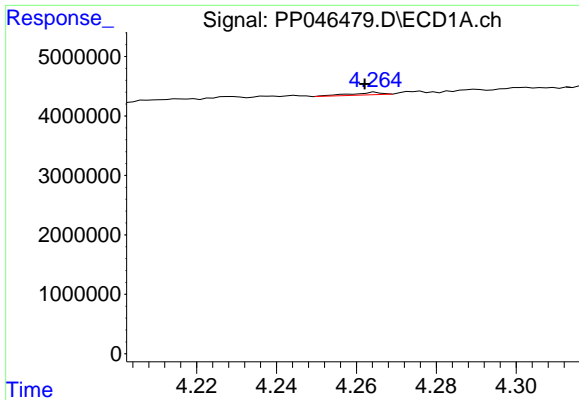
#9 AR-1221-2

R.T.: 4.194 min
 Delta R.T.: 0.011 min
 Response: 805276
 Conc: 39.66 ng/ml



#9 AR-1221-2

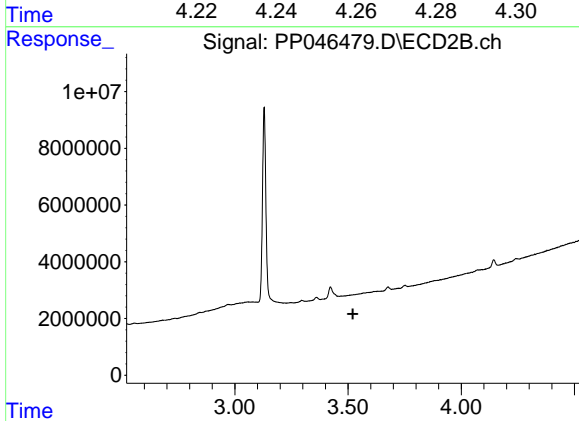
R.T.: 3.422 min
 Delta R.T.: -0.021 min
 Response: 5543806
 Conc: 164.14 ng/ml



#10 AR-1221-3

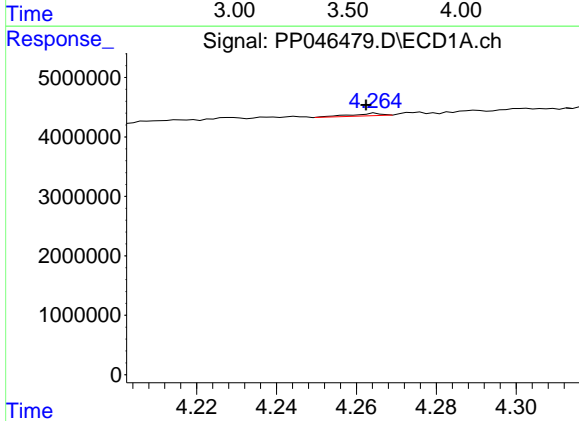
R.T.: 4.265 min
 Delta R.T.: 0.003 min
 Response: 204798
 Conc: 3.14 ng/ml

Instrument :
 ECD_P
 ClientSampleId :
 MH-5S



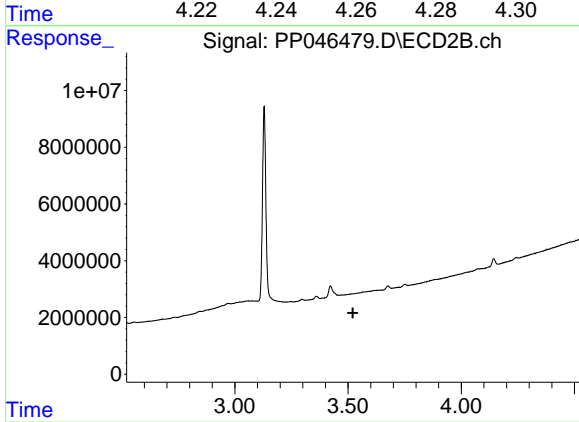
#10 AR-1221-3

R.T.: 0.000 min
 Exp R.T. : 3.521 min
 Response: 0
 Conc: N.D.



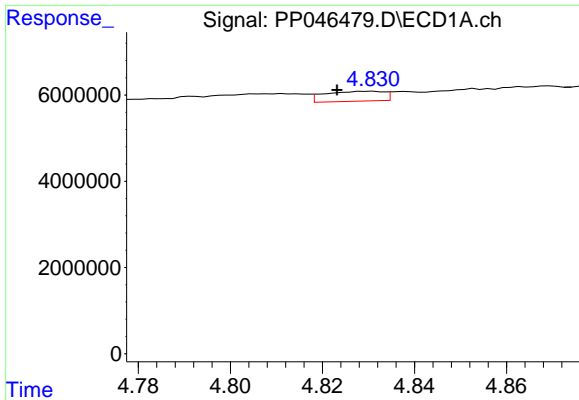
#11 AR-1232-1

R.T.: 4.265 min
 Delta R.T.: 0.002 min
 Response: 204798
 Conc: 4.18 ng/ml



#11 AR-1232-1

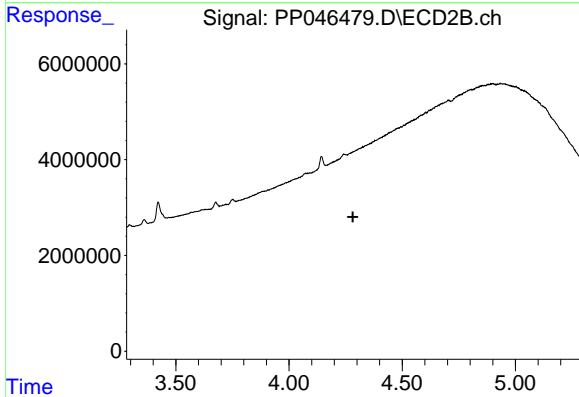
R.T.: 0.000 min
 Exp R.T. : 3.522 min
 Response: 0
 Conc: N.D.



#12 AR-1232-2

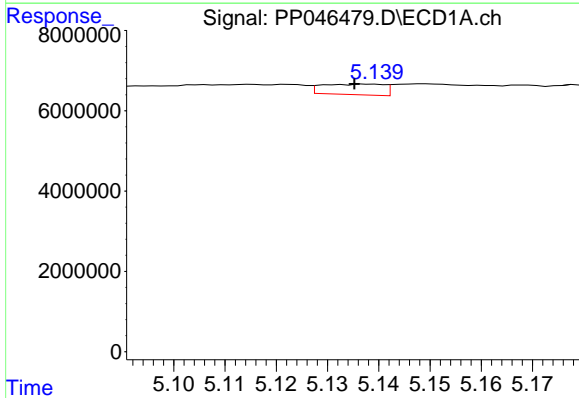
R.T.: 4.830 min
 Delta R.T.: 0.007 min
 Response: 2041161
 Conc: 84.09 ng/ml

Instrument :
 ECD_P
 ClientSampleId :
 MH-5S



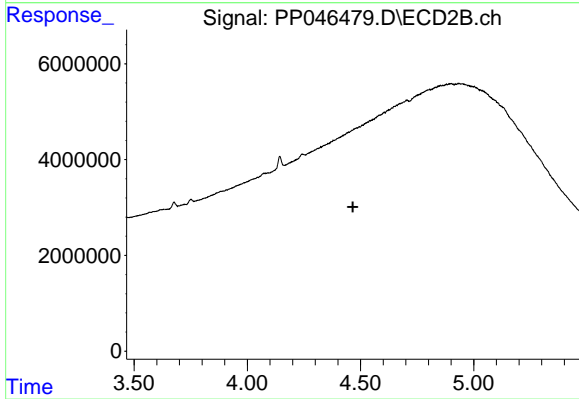
#12 AR-1232-2

R.T.: 0.000 min
 Exp R.T. : 4.282 min
 Response: 0
 Conc: N.D.



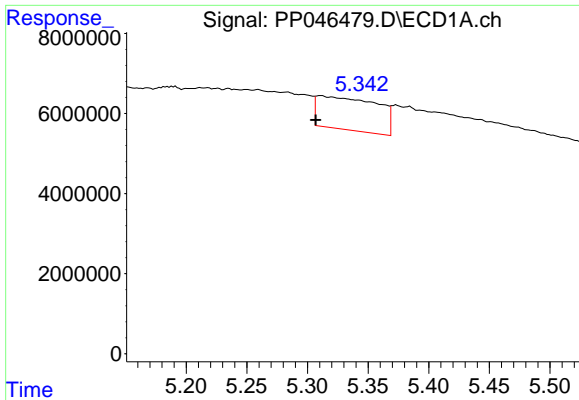
#13 AR-1232-3

R.T.: 5.138 min
 Delta R.T.: 0.003 min
 Response: 2196070
 Conc: 46.50 ng/ml



#13 AR-1232-3

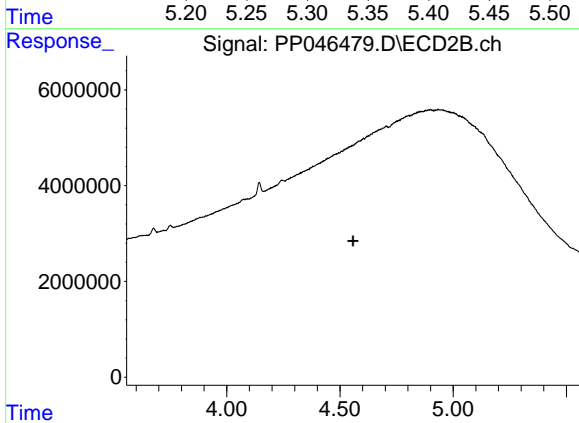
R.T.: 0.000 min
 Exp R.T. : 4.466 min
 Response: 0
 Conc: N.D.



#14 AR-1232-4

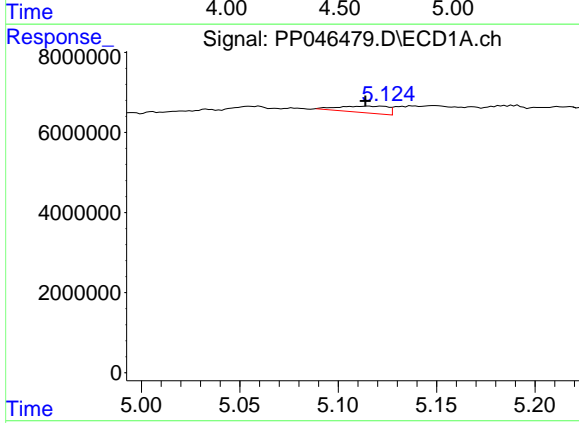
R.T.: 5.311 min
 Delta R.T.: 0.005 min
 Response: 28548967
 Conc: 1173.30 ng/m

Instrument :
 ECD_P
 ClientSampleId :
 MH-5S



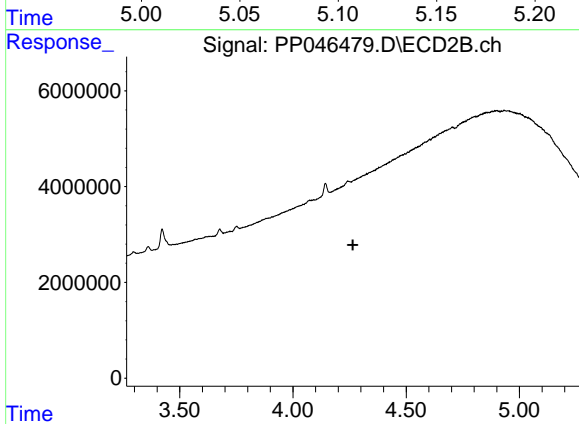
#14 AR-1232-4

R.T.: 0.000 min
 Exp R.T. : 4.558 min
 Response: 0
 Conc: N.D.



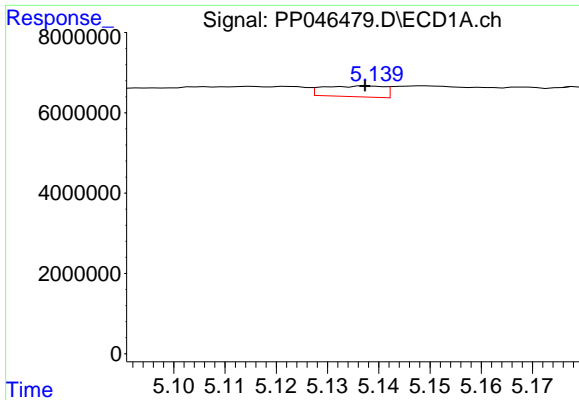
#16 AR-1242-1

R.T.: 5.115 min
 Delta R.T.: 0.001 min
 Response: 2894730
 Conc: 45.66 ng/ml



#16 AR-1242-1

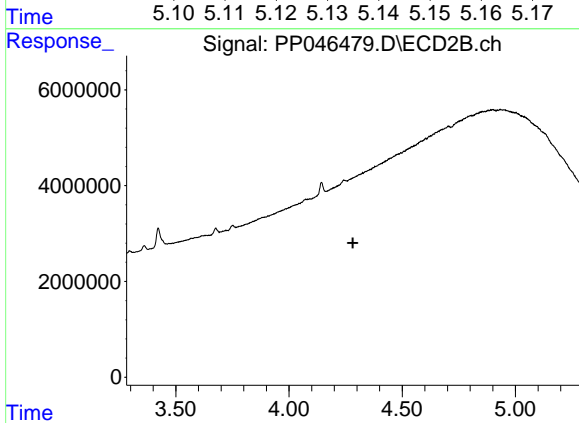
R.T.: 0.000 min
 Exp R.T. : 4.264 min
 Response: 0
 Conc: N.D.



#17 AR-1242-2

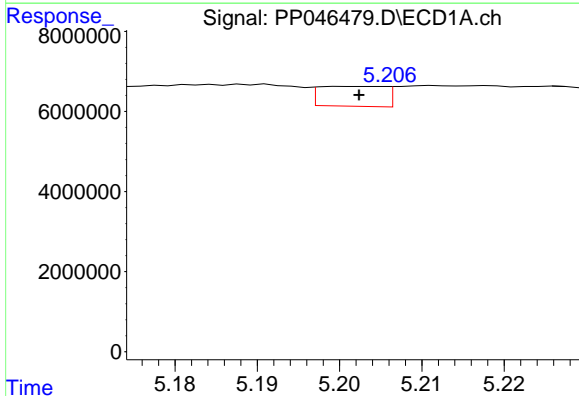
R.T.: 5.138 min
 Delta R.T.: 0.000 min
 Response: 2196070
 Conc: 23.05 ng/ml

Instrument :
 ECD_P
 ClientSampleId :
 MH-5S



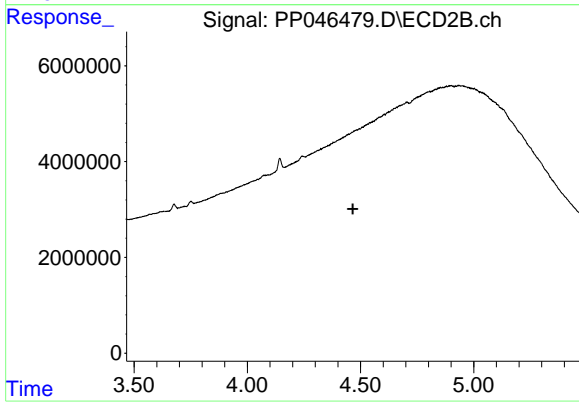
#17 AR-1242-2

R.T.: 0.000 min
 Exp R.T. : 4.282 min
 Response: 0
 Conc: N.D.



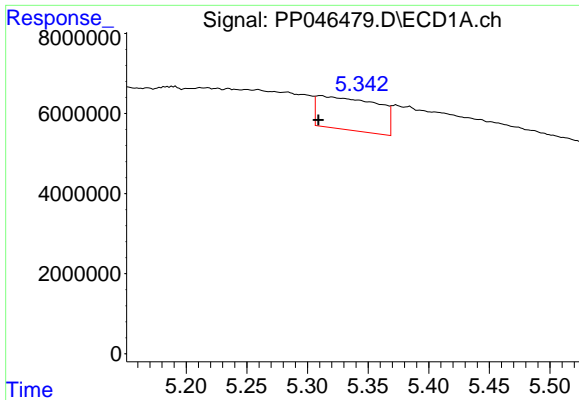
#18 AR-1242-3

R.T.: 5.202 min
 Delta R.T.: 0.000 min
 Response: 2766116
 Conc: 46.21 ng/ml



#18 AR-1242-3

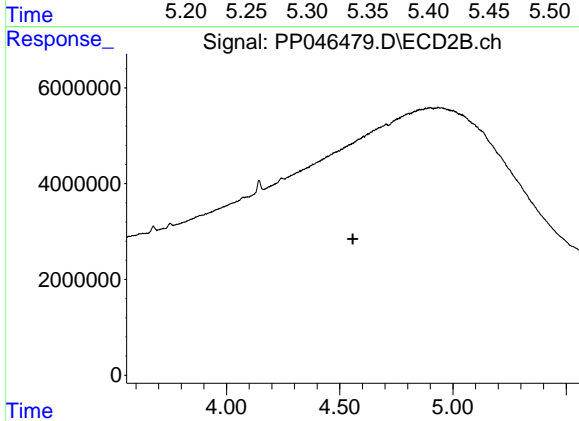
R.T.: 0.000 min
 Exp R.T. : 4.466 min
 Response: 0
 Conc: N.D.



#19 AR-1242-4

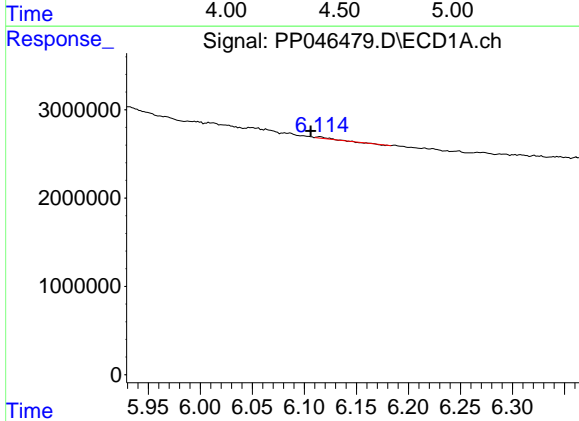
R.T.: 5.311 min
 Delta R.T.: 0.002 min
 Response: 28548967
 Conc: 564.47 ng/ml

Instrument :
 ECD_P
 ClientSampleId :
 MH-5S



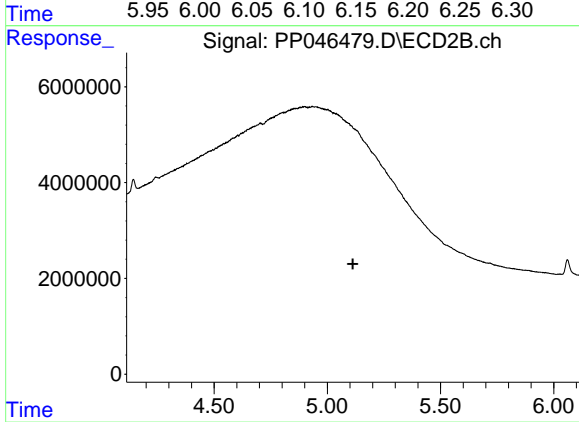
#19 AR-1242-4

R.T.: 0.000 min
 Exp R.T. : 4.558 min
 Response: 0
 Conc: N.D.



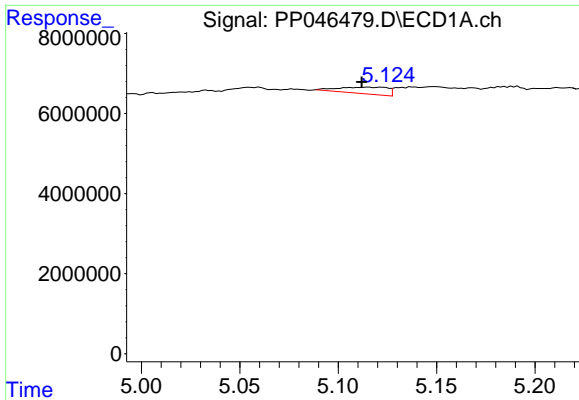
#20 AR-1242-5

R.T.: 6.115 min
 Delta R.T.: 0.009 min
 Response: 87077
 Conc: 1.73 ng/ml



#20 AR-1242-5

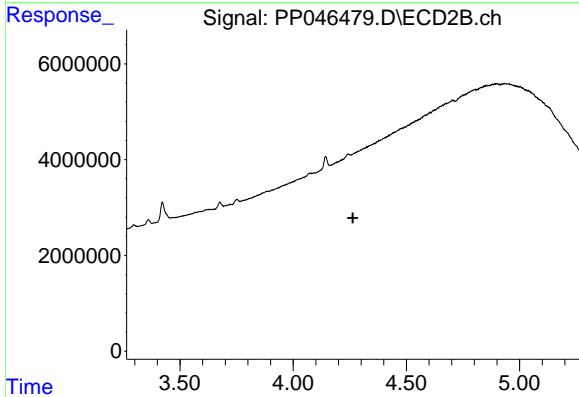
R.T.: 0.000 min
 Exp R.T. : 5.113 min
 Response: 0
 Conc: N.D.



#21 AR-1248-1

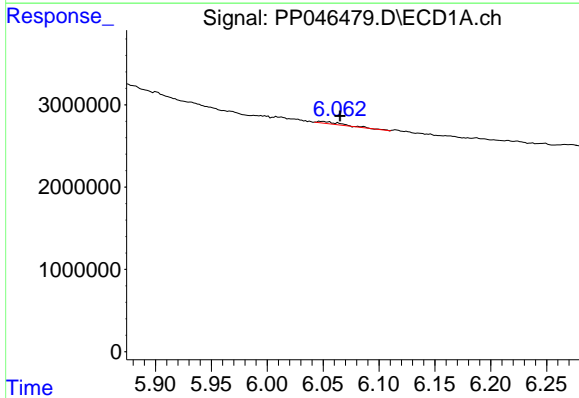
R.T.: 5.115 min
 Delta R.T.: 0.003 min
 Response: 2894730
 Conc: 69.26 ng/ml

Instrument :
 ECD_P
 ClientSampleId :
 MH-5S



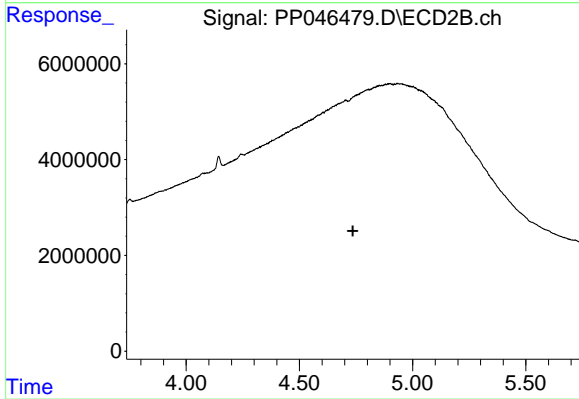
#21 AR-1248-1

R.T.: 0.000 min
 Exp R.T. : 4.263 min
 Response: 0
 Conc: N.D.



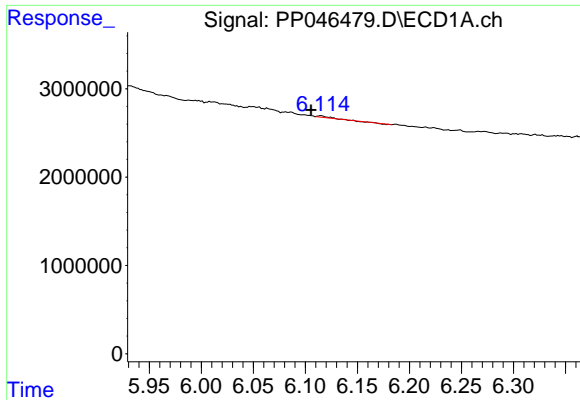
#24 AR-1248-4

R.T.: 6.048 min
 Delta R.T.: -0.017 min
 Response: 414012
 Conc: 5.40 ng/ml



#24 AR-1248-4

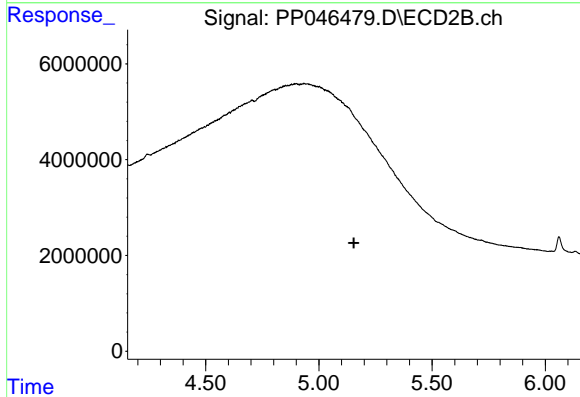
R.T.: 0.000 min
 Exp R.T. : 4.736 min
 Response: 0
 Conc: N.D.



#25 AR-1248-5

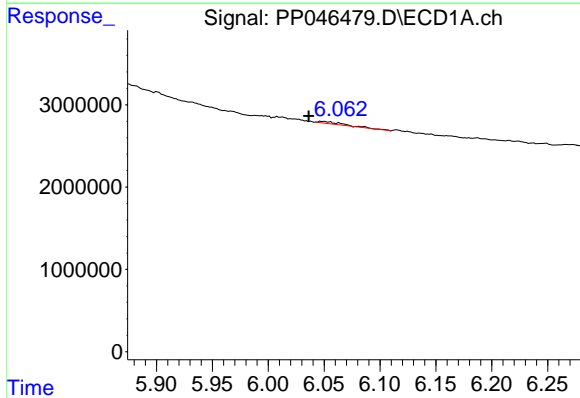
R.T.: 6.115 min
 Delta R.T.: 0.010 min
 Response: 87077
 Conc: 1.12 ng/ml

Instrument :
 ECD_P
 ClientSampleId :
 MH-5S



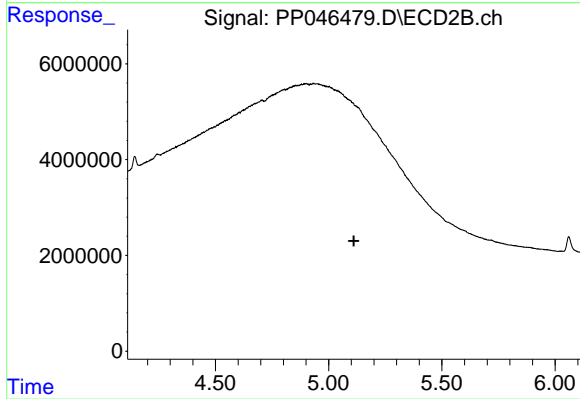
#25 AR-1248-5

R.T.: 0.000 min
 Exp R.T. : 5.155 min
 Response: 0
 Conc: N.D.



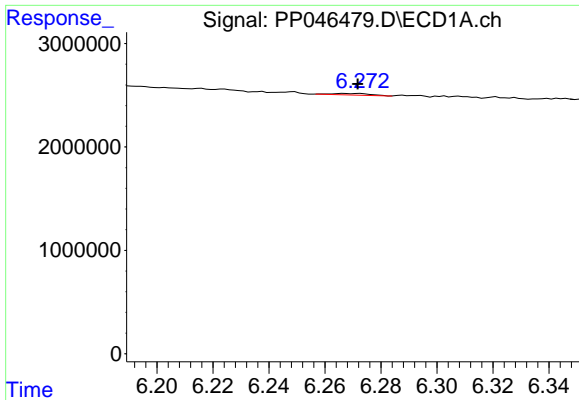
#26 AR-1254-1

R.T.: 6.048 min
 Delta R.T.: 0.011 min
 Response: 414012
 Conc: 7.13 ng/ml



#26 AR-1254-1

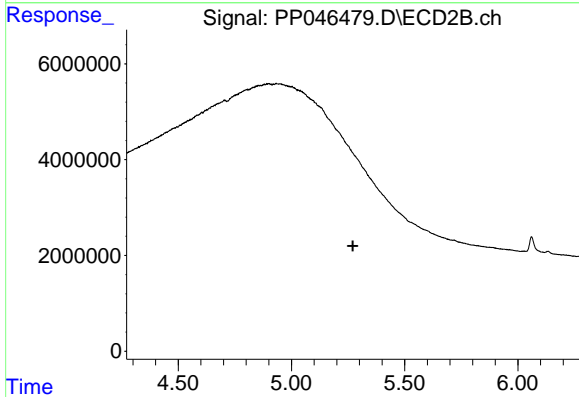
R.T.: 0.000 min
 Exp R.T. : 5.111 min
 Response: 0
 Conc: N.D.



#27 AR-1254-2

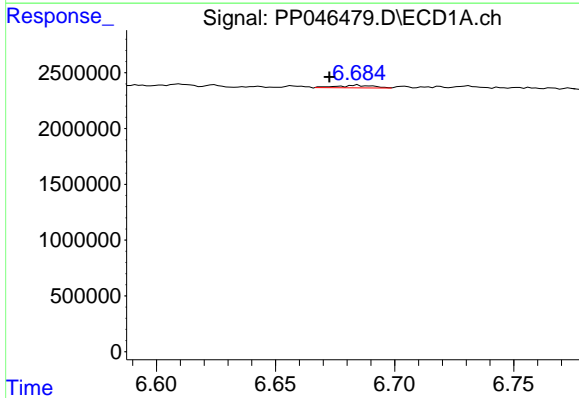
R.T.: 6.267 min
 Delta R.T.: -0.005 min
 Response: 139845
 Conc: 1.13 ng/ml

Instrument :
 ECD_P
 ClientSampleId :
 MH-5S



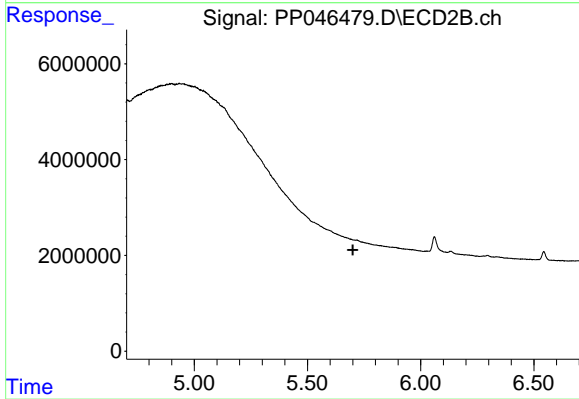
#27 AR-1254-2

R.T.: 0.000 min
 Exp R.T. : 5.271 min
 Response: 0
 Conc: N.D.



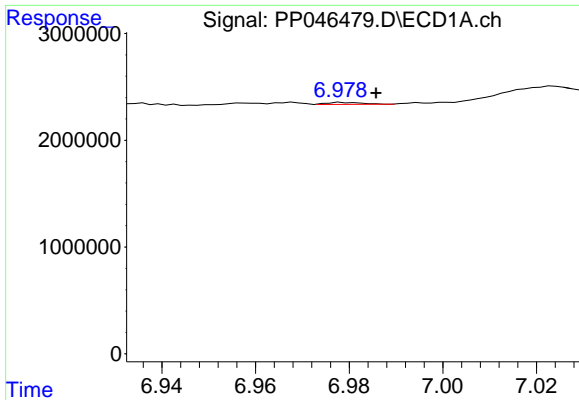
#28 AR-1254-3

R.T.: 6.684 min
 Delta R.T.: 0.011 min
 Response: 258261
 Conc: 1.95 ng/ml



#28 AR-1254-3

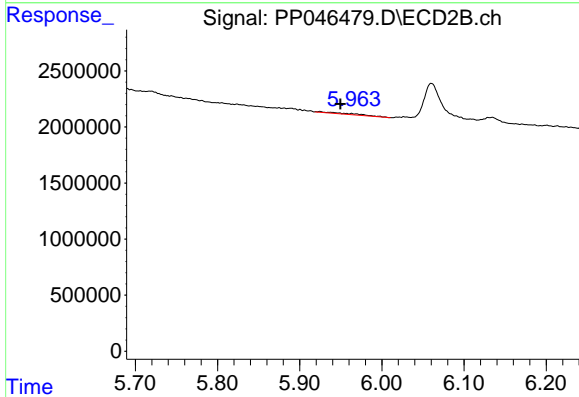
R.T.: 0.000 min
 Exp R.T. : 5.700 min
 Response: 0
 Conc: N.D.



#29 AR-1254-4

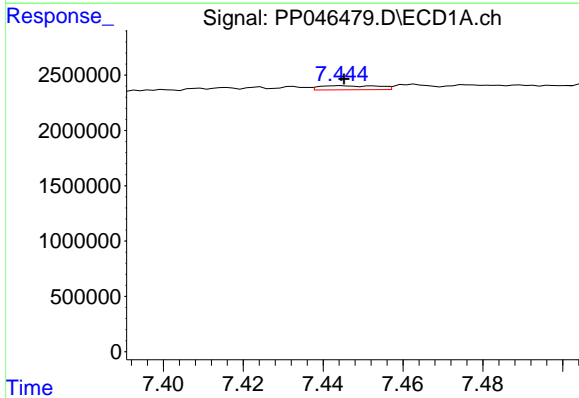
R.T.: 6.979 min
 Delta R.T.: -0.007 min
 Response: 96970
 Conc: 0.98 ng/ml

Instrument :
 ECD_P
 ClientSampleId :
 MH-5S



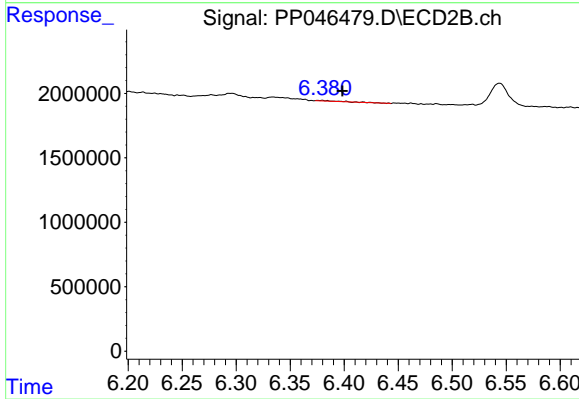
#29 AR-1254-4

R.T.: 5.924 min
 Delta R.T.: -0.025 min
 Response: 305602
 Conc: 1.78 ng/ml



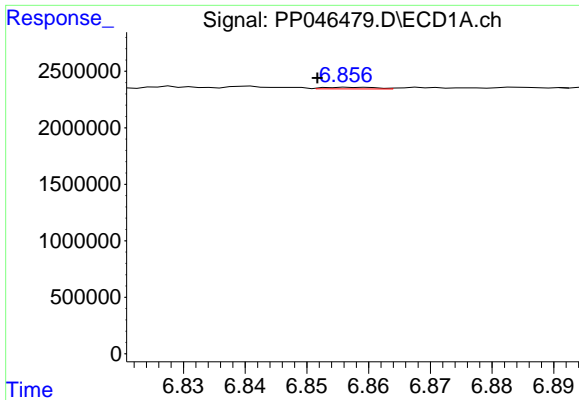
#30 AR-1254-5

R.T.: 7.445 min
 Delta R.T.: 0.000 min
 Response: 376563
 Conc: 4.28 ng/ml



#30 AR-1254-5

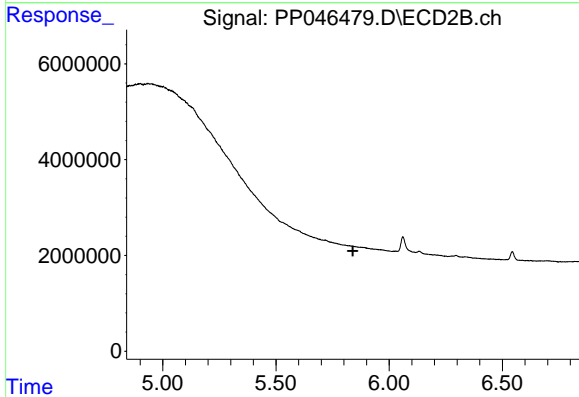
R.T.: 6.379 min
 Delta R.T.: -0.019 min
 Response: 67180
 Conc: 0.31 ng/ml



#31 AR-1260-1

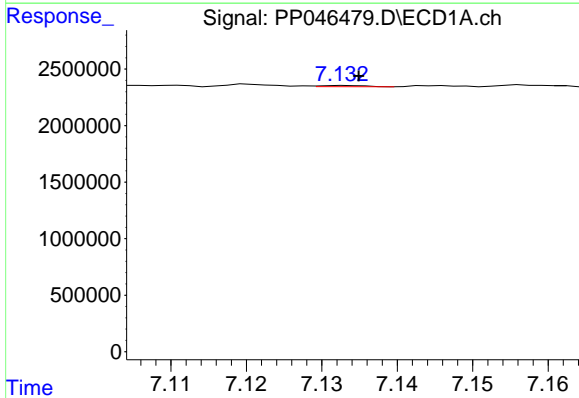
R.T.: 6.857 min
 Delta R.T.: 0.005 min
 Response: 84975
 Conc: 1.01 ng/ml

Instrument :
 ECD_P
 ClientSampleId :
 MH-5S



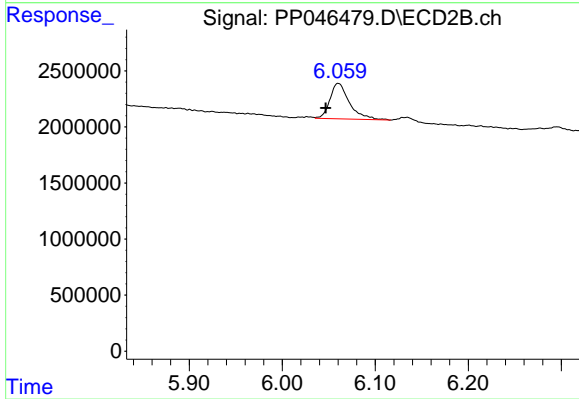
#31 AR-1260-1

R.T.: 0.000 min
 Exp R.T. : 5.840 min
 Response: 0
 Conc: N.D.



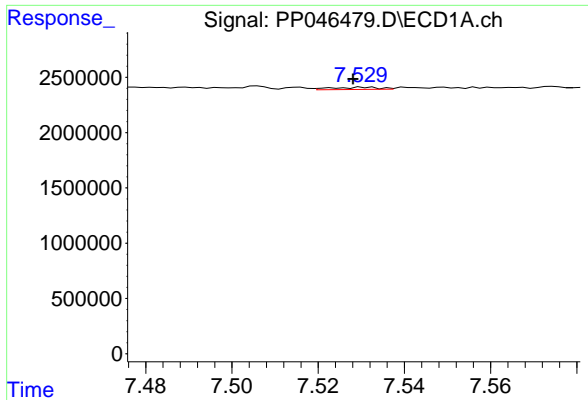
#32 AR-1260-2

R.T.: 7.133 min
 Delta R.T.: -0.002 min
 Response: 44328
 Conc: 0.44 ng/ml



#32 AR-1260-2

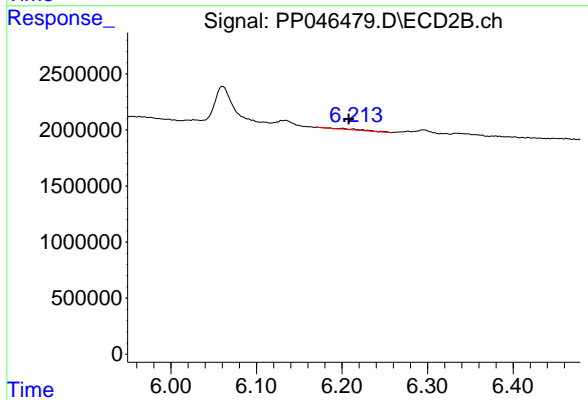
R.T.: 6.060 min
 Delta R.T.: 0.014 min
 Response: 4604139
 Conc: 22.63 ng/ml



#33 AR-1260-3

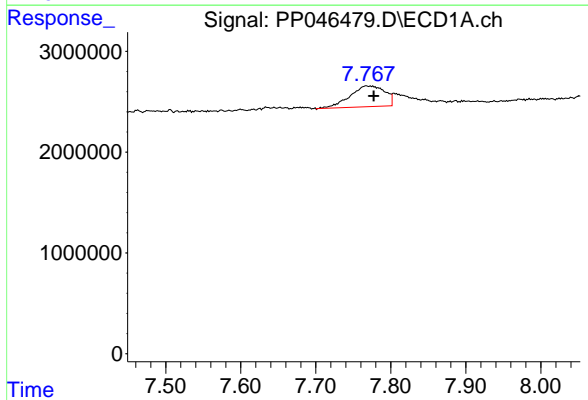
R.T.: 7.531 min
 Delta R.T.: 0.003 min
 Response: 151710
 Conc: 1.87 ng/ml

Instrument :
 ECD_P
 ClientSampleId :
 MH-5S



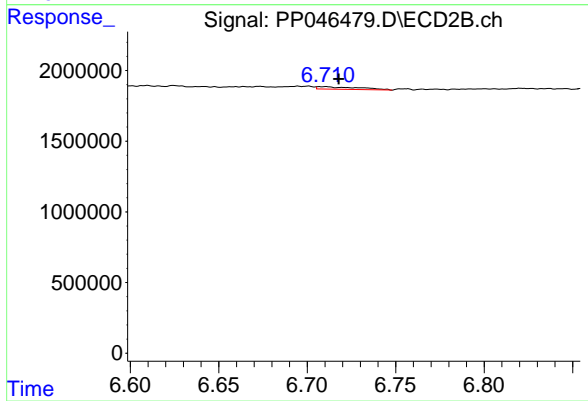
#33 AR-1260-3

R.T.: 6.200 min
 Delta R.T.: -0.008 min
 Response: 191266
 Conc: 1.12 ng/ml



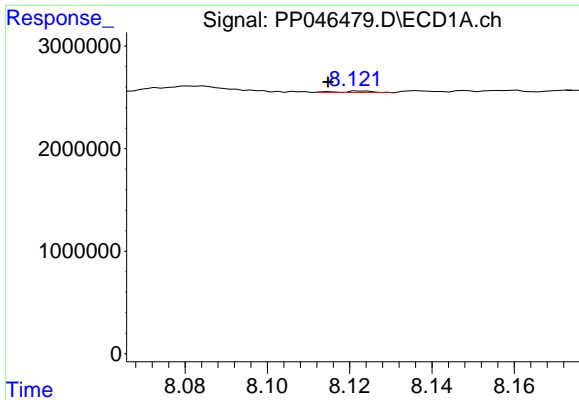
#34 AR-1260-4

R.T.: 7.767 min
 Delta R.T.: -0.010 min
 Response: 6608391
 Conc: 82.97 ng/ml



#34 AR-1260-4

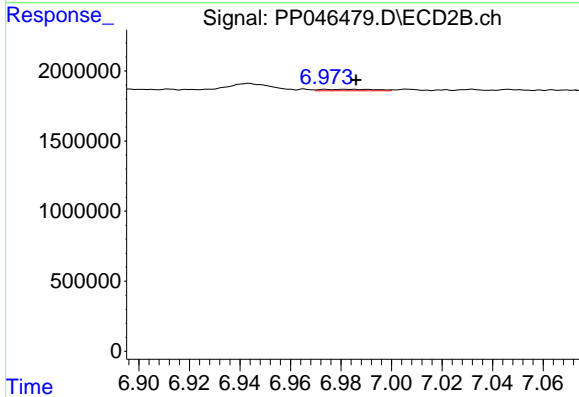
R.T.: 6.710 min
 Delta R.T.: -0.008 min
 Response: 298285
 Conc: 2.05 ng/ml



#35 AR-1260-5

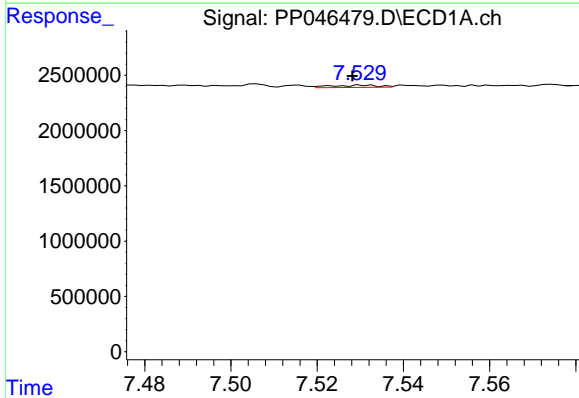
R.T.: 8.123 min
 Delta R.T.: 0.008 min
 Response: 76044
 Conc: 0.48 ng/ml

Instrument :
 ECD_P
 ClientSampleId :
 MH-5S



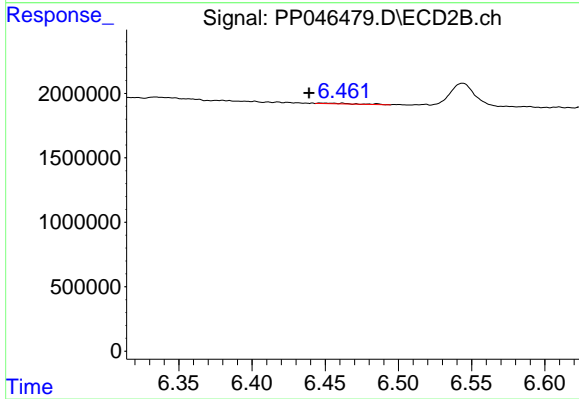
#35 AR-1260-5

R.T.: 6.982 min
 Delta R.T.: -0.004 min
 Response: 155337
 Conc: 0.44 ng/ml



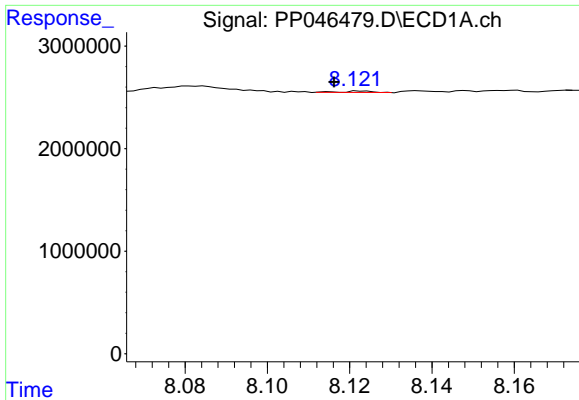
#36 AR-1262-1

R.T.: 7.531 min
 Delta R.T.: 0.003 min
 Response: 151710
 Conc: 1.26 ng/ml



#36 AR-1262-1

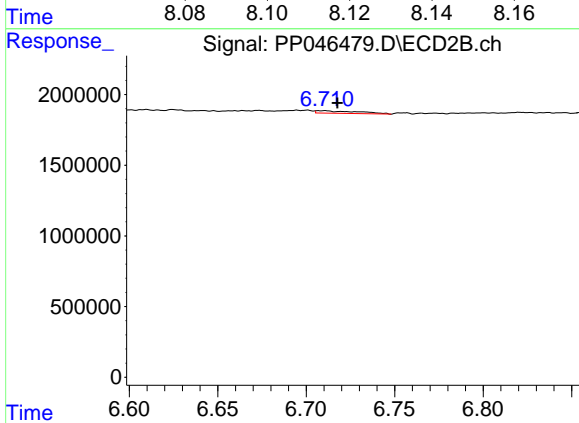
R.T.: 6.447 min
 Delta R.T.: 0.008 min
 Response: 78603
 Conc: 0.32 ng/ml



#37 AR-1262-2

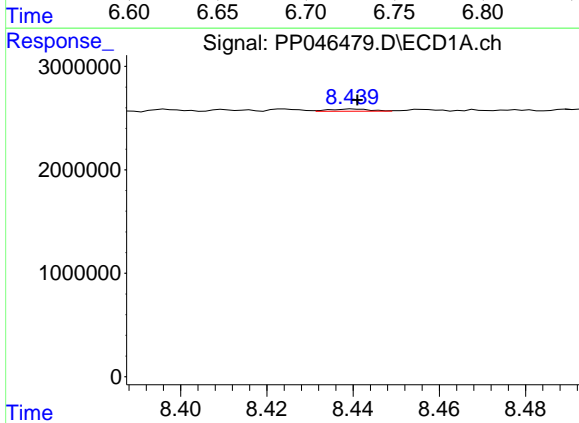
R.T.: 8.123 min
 Delta R.T.: 0.007 min
 Response: 76044
 Conc: 0.40 ng/ml

Instrument :
 ECD_P
 ClientSampleId :
 MH-5S



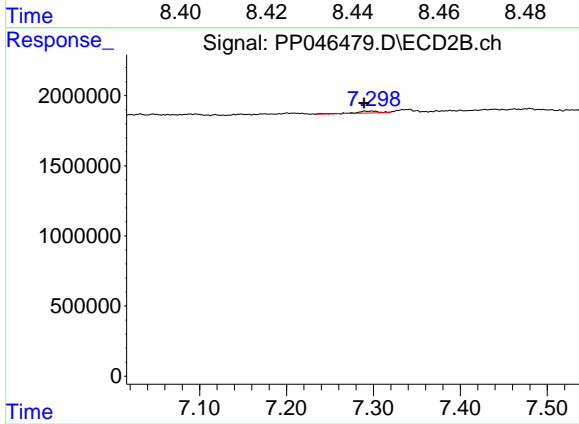
#37 AR-1262-2

R.T.: 6.710 min
 Delta R.T.: -0.008 min
 Response: 298285
 Conc: 1.54 ng/ml



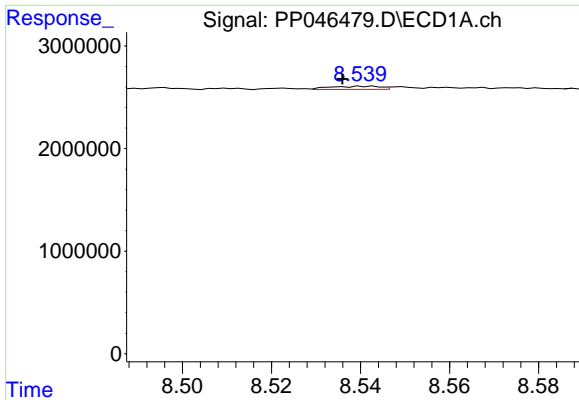
#38 AR-1262-3

R.T.: 8.440 min
 Delta R.T.: 0.000 min
 Response: 141623
 Conc: 1.05 ng/ml



#38 AR-1262-3

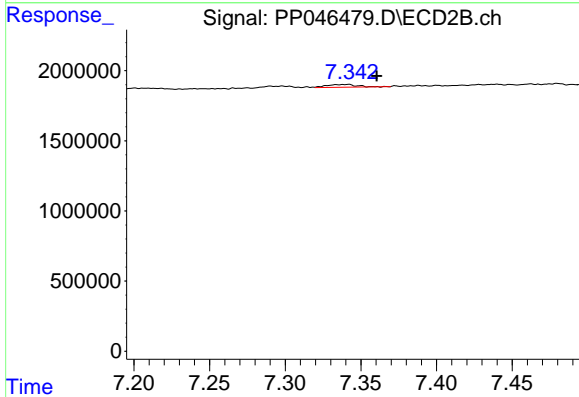
R.T.: 7.290 min
 Delta R.T.: 0.000 min
 Response: 244358
 Conc: 1.51 ng/ml



#39 AR-1262-4

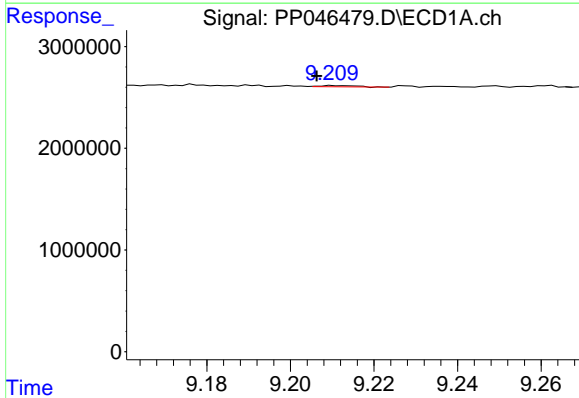
R.T.: 8.542 min
 Delta R.T.: 0.006 min
 Response: 242701
 Conc: 3.85 ng/ml

Instrument :
 ECD_P
 ClientSampleId :
 MH-5S



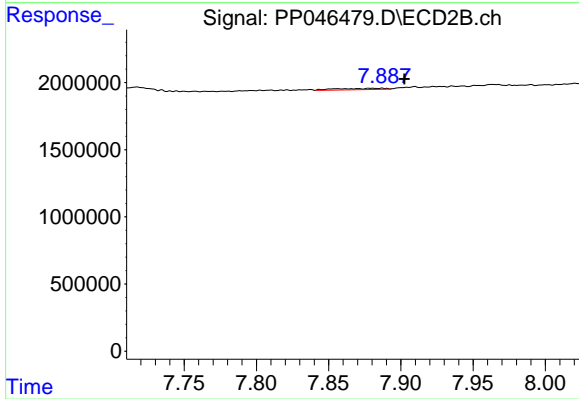
#39 AR-1262-4

R.T.: 7.341 min
 Delta R.T.: -0.019 min
 Response: 279821
 Conc: 0.98 ng/ml



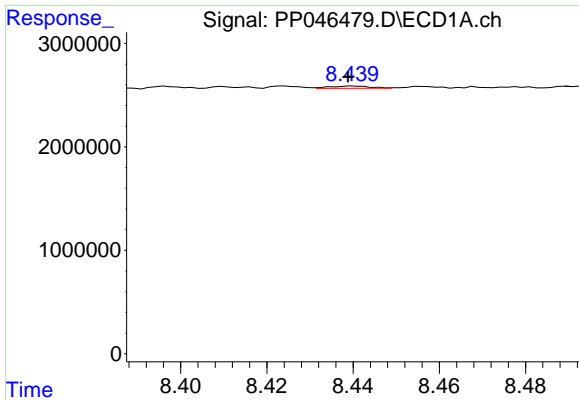
#40 AR-1262-5

R.T.: 9.210 min
 Delta R.T.: 0.004 min
 Response: 67168
 Conc: 0.97 ng/ml



#40 AR-1262-5

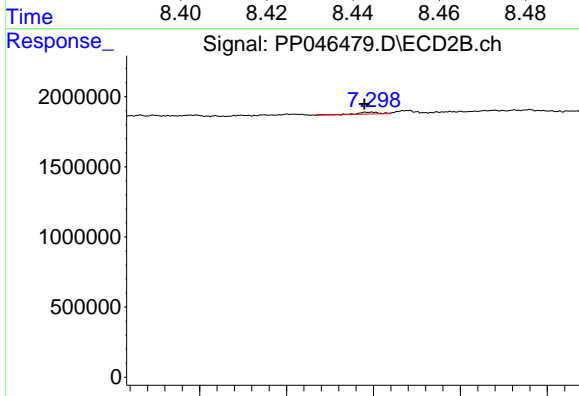
R.T.: 7.887 min
 Delta R.T.: -0.015 min
 Response: 228749
 Conc: 1.74 ng/ml



#41 AR-1268-1

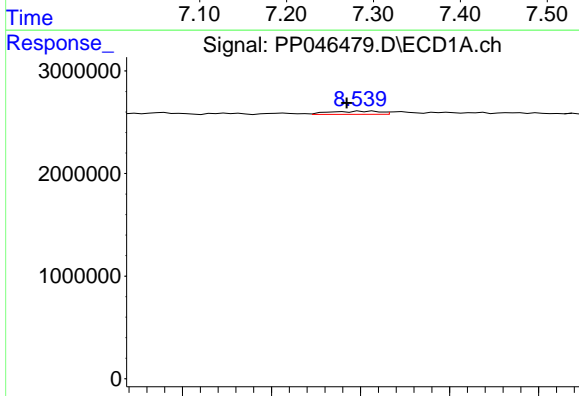
R.T.: 8.440 min
 Delta R.T.: 0.001 min
 Response: 141623
 Conc: 0.59 ng/ml

Instrument :
 ECD_P
 ClientSampleId :
 MH-5S



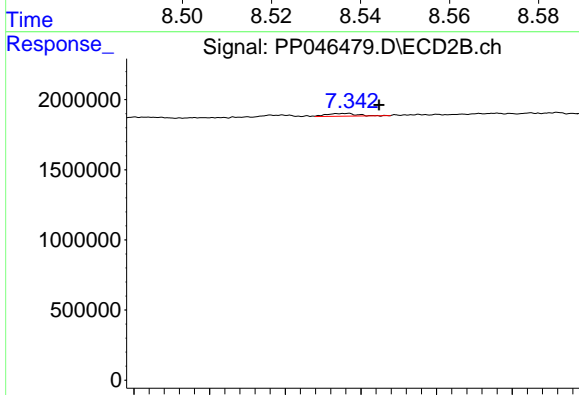
#41 AR-1268-1

R.T.: 7.290 min
 Delta R.T.: 0.000 min
 Response: 244358
 Conc: 0.51 ng/ml



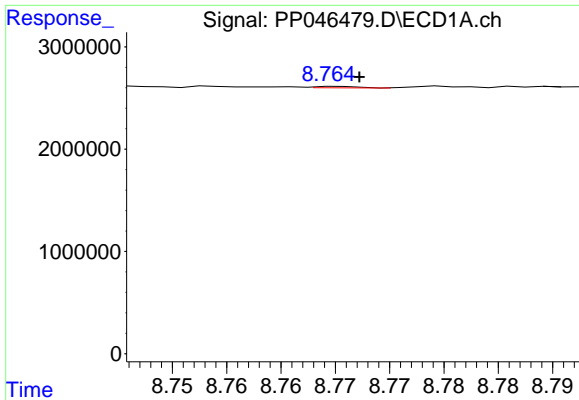
#42 AR-1268-2

R.T.: 8.542 min
 Delta R.T.: 0.005 min
 Response: 242701
 Conc: 1.10 ng/ml



#42 AR-1268-2

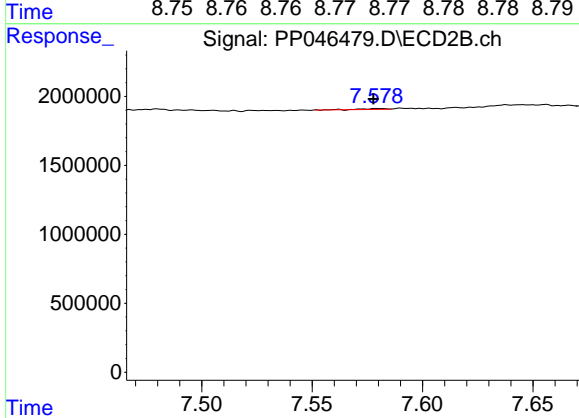
R.T.: 7.341 min
 Delta R.T.: -0.021 min
 Response: 279821
 Conc: 0.66 ng/ml



#43 AR-1268-3

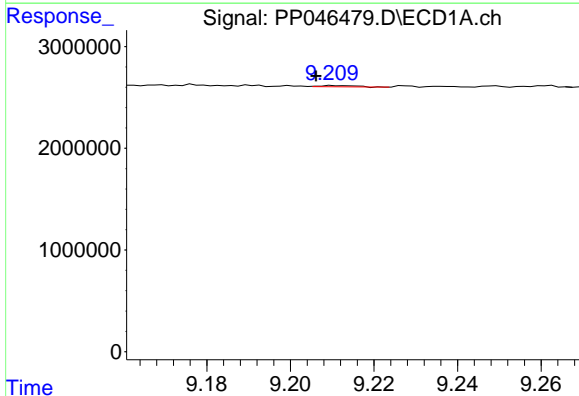
R.T.: 8.765 min
 Delta R.T.: -0.002 min
 Response: 36101
 Conc: 0.19 ng/ml

Instrument :
 ECD_P
 ClientSampleId :
 MH-5S



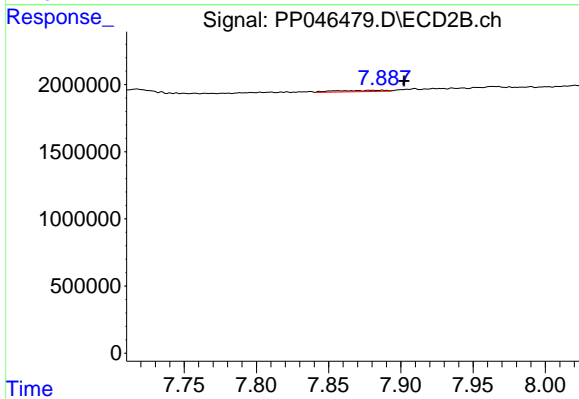
#43 AR-1268-3

R.T.: 7.580 min
 Delta R.T.: 0.002 min
 Response: 40232
 Conc: 0.11 ng/ml



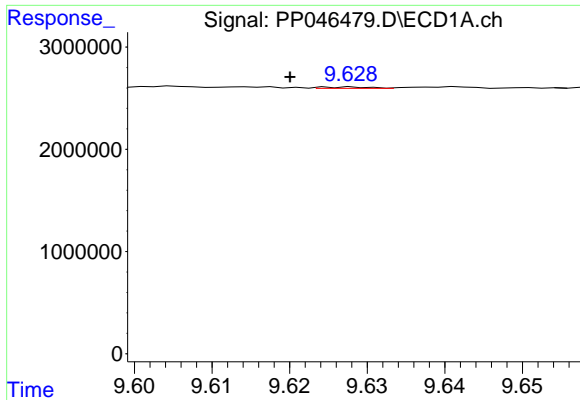
#44 AR-1268-4

R.T.: 9.210 min
 Delta R.T.: 0.004 min
 Response: 67168
 Conc: 0.87 ng/ml



#44 AR-1268-4

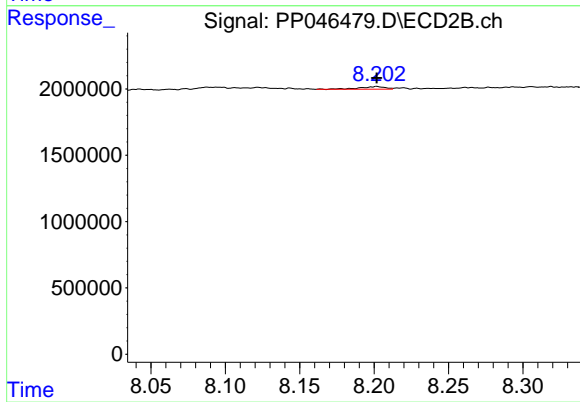
R.T.: 7.887 min
 Delta R.T.: -0.015 min
 Response: 228749
 Conc: 1.56 ng/ml



#45 AR-1268-5

R.T.: 9.628 min
Delta R.T.: 0.008 min
Response: 55800
Conc: 0.10 ng/ml

Instrument :
ECD_P
ClientSampleId :
MH-5S



#45 AR-1268-5

R.T.: 8.202 min
Delta R.T.: 0.000 min
Response: 231347
Conc: 0.23 ng/ml