

Data Path : Z:\pestpcbsrv\HPCHEM1\ECD_P\Data\PP042222\
 Data File : PP046487.D
 Signal(s) : Signal #1: ECD1A.ch Signal #2: ECD2B.ch
 Acq On : 23 Apr 2022 08:10
 Operator : YP\AJ
 Sample : PB144294BS
 Misc :
 ALS Vial : 42 Sample Multiplier: 1

Instrument :
 ECD_P
 ClientSampleId :
 PB144294BS

Integration File signal 1: autoint1.e
 Integration File signal 2: autoint2.e
 Quant Time: Apr 24 20:55:02 2022
 Quant Method : Z:\pestpcbsrv\HPCHEM1\ECD_P\methods\PP042222.M
 Quant Title : GC EXTRACTABLES
 QLast Update : Fri Apr 22 19:00:06 2022
 Response via : Initial Calibration
 Integrator: ChemStation

Volume Inj. : 2 µl
 Signal #1 Phase : ZB-MR1 Signal #2 Phase: ZB-MR2
 Signal #1 Info : 30Mx0.32mmx 0.50µ Signal #2 Info : 30M x 0.32mm x 0.25µm

Compound	RT#1	RT#2	Resp#1	Resp#2	ng/ml	ng/ml
System Monitoring Compounds						
1) SA Tetrachlo...	3.868	3.130	52706014	70039302	21.834	21.351
2) SA Decachlor...	9.954	8.455	35738214	58172521	24.287	24.388
Target Compounds						
3) L1 AR-1016-1	5.114	4.264	34340857	56821300	456.044	494.594
4) L1 AR-1016-2	5.137	4.282	52563597	83104149	461.605	489.810
5) L1 AR-1016-3	5.203	4.466	31880453	43344608	445.973	495.110
6) L1 AR-1016-4	5.309	4.514	26708632	33634077	444.241	483.108
7) L1 AR-1016-5	5.627	4.737	24858229	43323631	469.490	509.374
8) L2 AR-1221-1	4.090	3.353	5679793	5254027	205.951	118.986 #
9) L2 AR-1221-2	4.184	3.443	4141656	7240073	203.991	214.361
10) L2 AR-1221-3	4.265	3.521	19041404	29096328	292.105	292.904
11) L3 AR-1232-1	4.265	3.521	19041404	29096328	388.911	383.551
12) L3 AR-1232-2	4.825	4.282	26993498	83104149	1112.039	1152.745
13) L3 AR-1232-3	5.137	4.466	52563597	43344608	1112.885	1190.472
14) L3 AR-1232-4	5.309	4.557	26708632	41316119	1097.665	1296.958
15) L3 AR-1232-5	5.410	4.737	20834905	43323631	1252.209	1503.969
16) L4 AR-1242-1	5.114	4.264	34340857	56821300	541.620	576.375
17) L4 AR-1242-2	5.137	4.282	52563597	83104149	551.730	573.758
18) L4 AR-1242-3	5.203	4.466	31880453	43344608	532.536	583.220
19) L4 AR-1242-4	5.309	4.557	26708632	41316119	528.084	578.495
20) L4 AR-1242-5	6.107	5.111	3814033	35625146	75.689	369.209 #
21) L5 AR-1248-1	5.114	4.264	34340857	56821300	821.648	826.902
22) L5 AR-1248-2	5.410	4.514	20834905	33634077	352.514	359.753
23) L5 AR-1248-3	5.627	4.557	24858229	41316119	355.873	423.224
24) L5 AR-1248-4	6.065	4.737	4019302	43323631	52.416	368.030 #
25) L5 AR-1248-5	6.107	5.155	3814033	5787886	49.037	47.496
26) L6 AR-1254-1	6.036	5.111	18918879	35625146	325.706	184.621 #
27) L6 AR-1254-2	6.274	5.271	20233587	34788337	164.175	208.910 #
28) L6 AR-1254-3	6.674	5.716f	10001007	61945438	75.583	248.429 #
29) L6 AR-1254-4	6.986	5.949	7085988	7106767	71.294	41.421 #
30) L6 AR-1254-5	7.445	6.398	60311352	116.1E6	685.724	531.945
31) L7 AR-1260-1	6.853	5.840	44034822	84532701	521.805	531.233
32) L7 AR-1260-2	7.135	6.047	53243022	112.1E6	528.775	551.201
33) L7 AR-1260-3	7.530	6.207	36070877	95351059	445.254	558.208 #
34) L7 AR-1260-4	7.777	6.718	37985472	66968215	476.901	460.757
35) L7 AR-1260-5	8.117	6.985	75335279	169.7E6	474.274	483.420
36) L8 AR-1262-1	7.530	6.438	36070877	83635516	298.431	338.561
37) L8 AR-1262-2	8.117	6.718	75335279	66968215	391.741	346.468
38) L8 AR-1262-3	8.458f	7.289	47824691	32658455	356.206	201.144 #
39) L8 AR-1262-4	8.516f	7.359	28571542	113.3E6	453.649	395.646
40) L8 AR-1262-5	9.208	7.902	18324608	35586427	265.590	271.224
41) L9 AR-1268-1	8.458f	7.289	47824691	32658455	198.956	68.155 #

Data Path : Z:\pestpcbsrv\HPCHEM1\ECD_P\Data\PP042222\
 Data File : PP046487.D
 Signal(s) : Signal #1: ECD1A.ch Signal #2: ECD2B.ch
 Acq On : 23 Apr 2022 08:10
 Operator : YP\AJ
 Sample : PB144294BS
 Misc :
 ALS Vial : 42 Sample Multiplier: 1

Instrument :
 ECD_P
 ClientSampleId :
 PB144294BS

Integration File signal 1: autoint1.e
 Integration File signal 2: autoint2.e
 Quant Time: Apr 24 20:55:02 2022
 Quant Method : Z:\pestpcbsrv\HPCHEM1\ECD_P\methods\PP042222.M
 Quant Title : GC EXTRACTABLES
 QLast Update : Fri Apr 22 19:00:06 2022
 Response via : Initial Calibration
 Integrator: ChemStation

Volume Inj. : 2 µl
 Signal #1 Phase : ZB-MR1 Signal #2 Phase: ZB-MR2
 Signal #1 Info : 30Mx0.32mmx 0.50µ Signal #2 Info : 30M x 0.32mm x 0.25µm

	Compound	RT#1	RT#2	Resp#1	Resp#2	ng/ml	ng/ml
42)	L9 AR-1268-2	8.516f	7.359	28571542	113.3E6	129.045	267.533 #
43)	L9 AR-1268-3	8.768	7.577	1797120	2804349	9.356	7.929
44)	L9 AR-1268-4	9.208	7.902	18324608	35586427	237.512	241.989
45)	L9 AR-1268-5	9.624	8.200	6265967	10667776	11.190	10.432

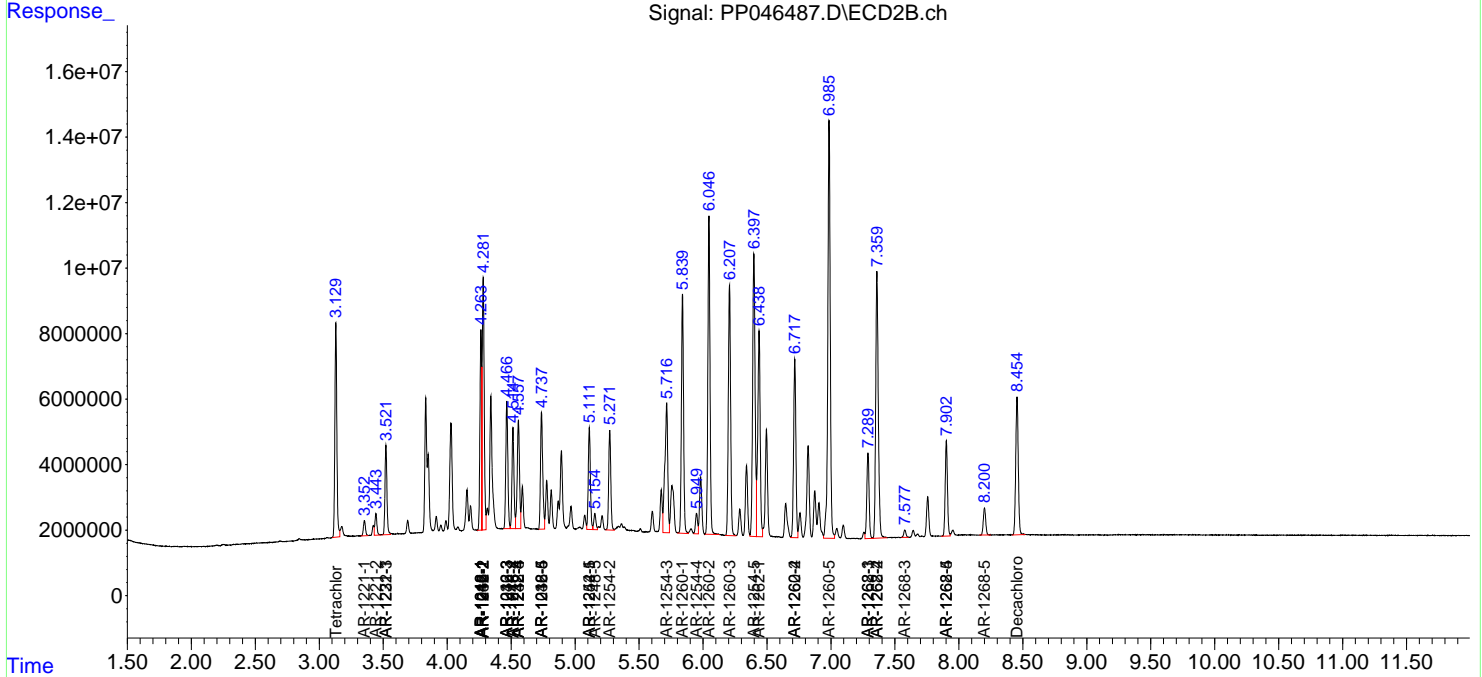
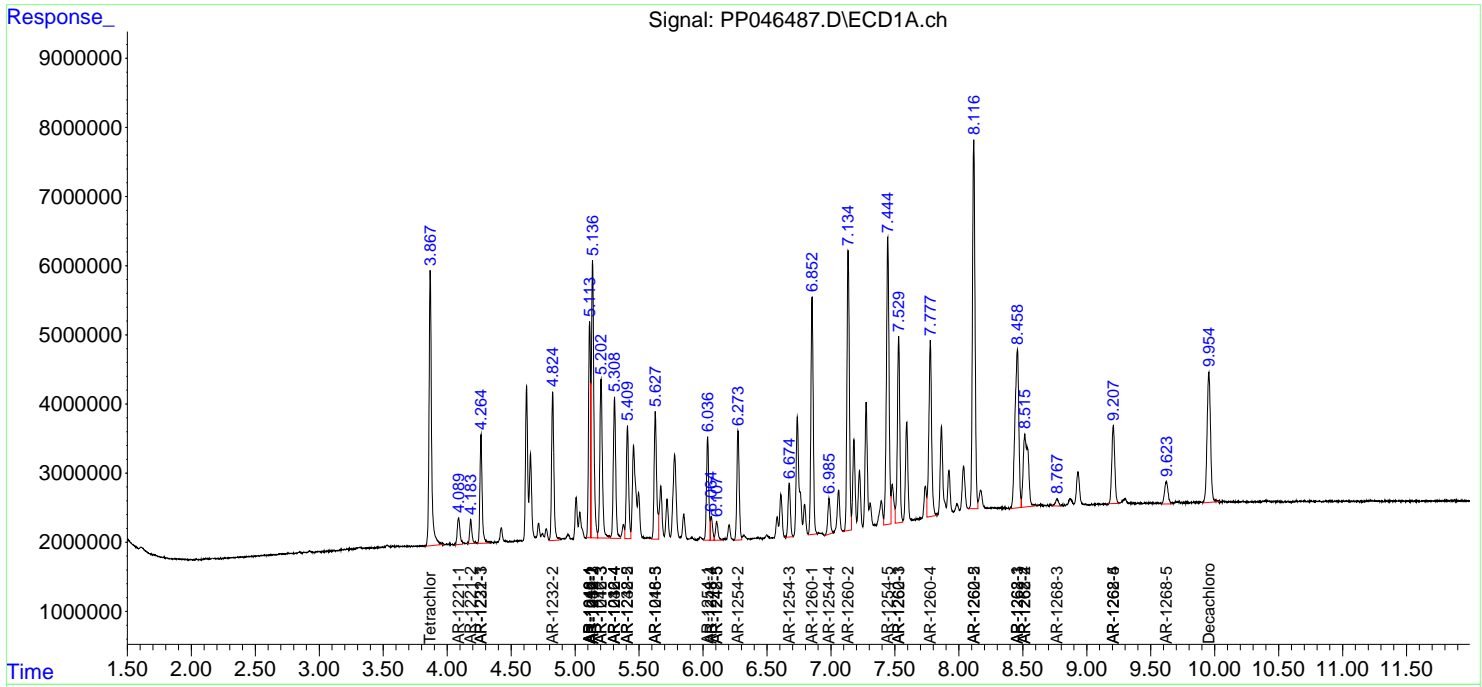
(f)=RT Delta > 1/2 Window (#)=Amounts differ by > 25% (m)=manual int.

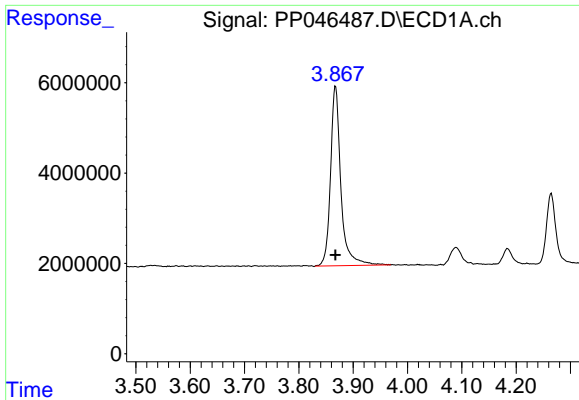
Data Path : Z:\pestpcbsrv\HPCHEM1\ECD_P\Data\PP042222\
 Data File : PP046487.D
 Signal(s) : Signal #1: ECD1A.ch Signal #2: ECD2B.ch
 Acq On : 23 Apr 2022 08:10
 Operator : YP\AJ
 Sample : PB144294BS
 Misc :
 ALS Vial : 42 Sample Multiplier: 1

Instrument :
 ECD_P
 ClientSampleId :
 PB144294BS

Integration File signal 1: autoint1.e
 Integration File signal 2: autoint2.e
 Quant Time: Apr 24 20:55:02 2022
 Quant Method : Z:\pestpcbsrv\HPCHEM1\ECD_P\methods\PP042222.M
 Quant Title : GC EXTRACTABLES
 QLast Update : Fri Apr 22 19:00:06 2022
 Response via : Initial Calibration
 Integrator: ChemStation

Volume Inj. : 2 µl
 Signal #1 Phase : ZB-MR1 Signal #2 Phase: ZB-MR2
 Signal #1 Info : 30Mx0.32mmx 0.50µ Signal #2 Info : 30M x 0.32mm x 0.25µm

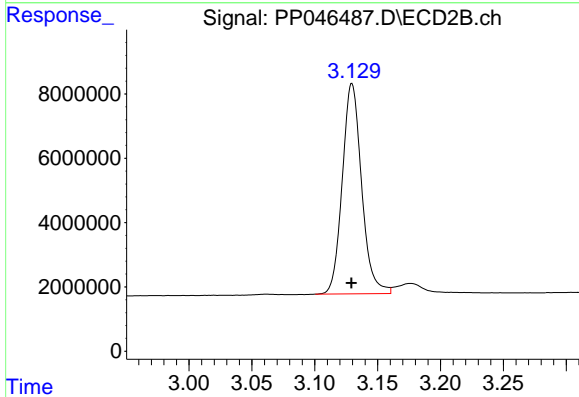




#1 Tetrachloro-m-xylene

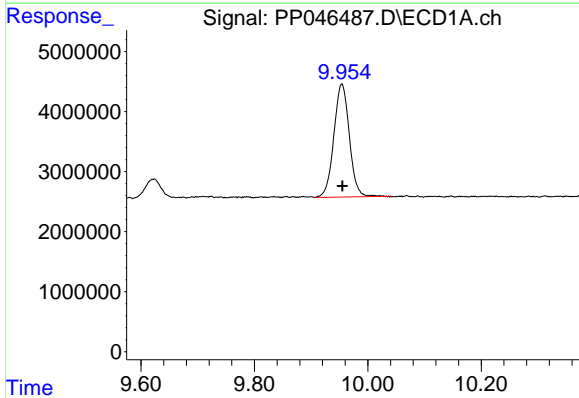
R.T.: 3.868 min
 Delta R.T.: 0.000 min
 Response: 52706014
 Conc: 21.83 ng/ml

Instrument :
 ECD_P
 ClientSampleId :
 PB144294BS



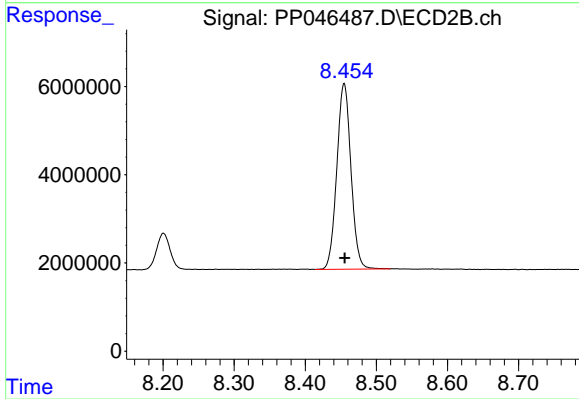
#1 Tetrachloro-m-xylene

R.T.: 3.130 min
 Delta R.T.: 0.000 min
 Response: 70039302
 Conc: 21.35 ng/ml



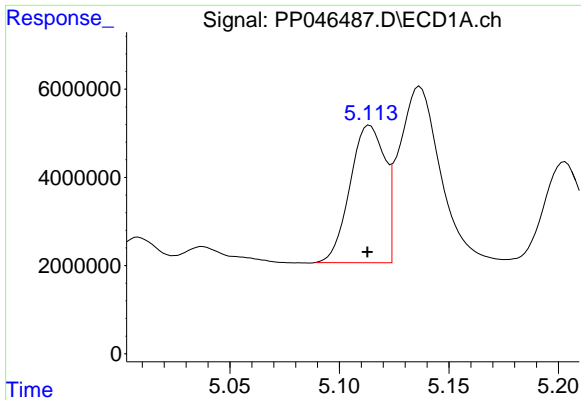
#2 Decachlorobiphenyl

R.T.: 9.954 min
 Delta R.T.: 0.000 min
 Response: 35738214
 Conc: 24.29 ng/ml



#2 Decachlorobiphenyl

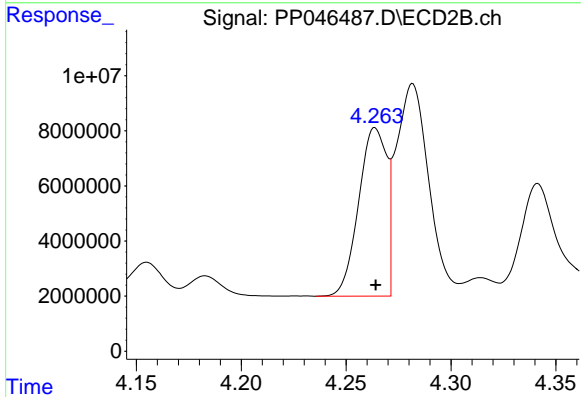
R.T.: 8.455 min
 Delta R.T.: -0.001 min
 Response: 58172521
 Conc: 24.39 ng/ml



#3 AR-1016-1

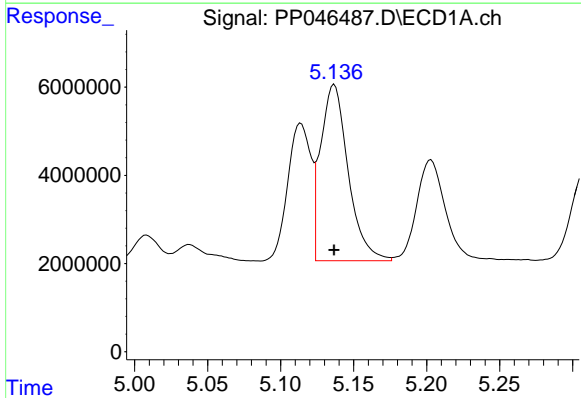
R.T.: 5.114 min
 Delta R.T.: 0.001 min
 Response: 34340857
 Conc: 456.04 ng/ml

Instrument :
 ECD_P
 ClientSampleId :
 PB144294BS



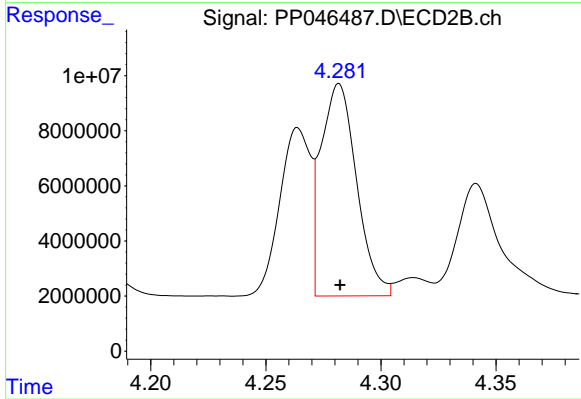
#3 AR-1016-1

R.T.: 4.264 min
 Delta R.T.: 0.000 min
 Response: 56821300
 Conc: 494.59 ng/ml



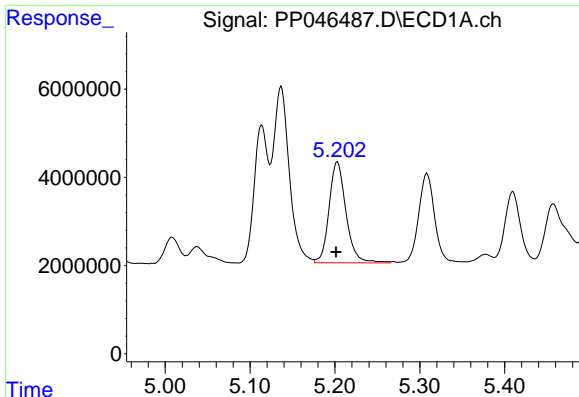
#4 AR-1016-2

R.T.: 5.137 min
 Delta R.T.: 0.000 min
 Response: 52563597
 Conc: 461.60 ng/ml



#4 AR-1016-2

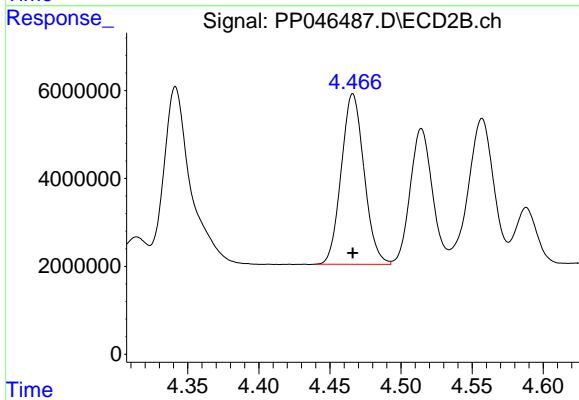
R.T.: 4.282 min
 Delta R.T.: 0.000 min
 Response: 83104149
 Conc: 489.81 ng/ml



#5 AR-1016-3

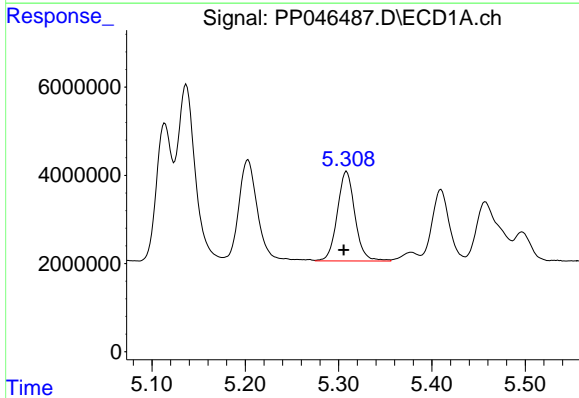
R.T.: 5.203 min
 Delta R.T.: 0.002 min
 Response: 31880453
 Conc: 445.97 ng/ml

Instrument :
 ECD_P
 ClientSampleId :
 PB144294BS



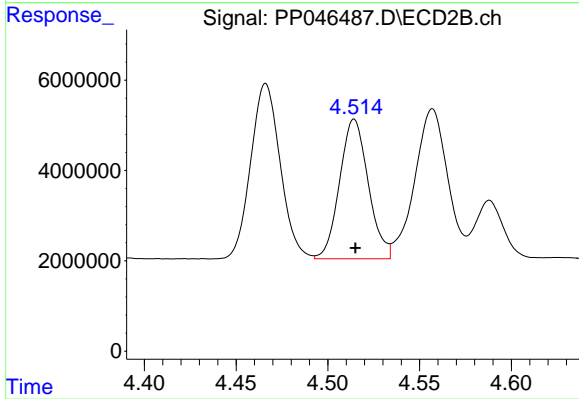
#5 AR-1016-3

R.T.: 4.466 min
 Delta R.T.: 0.000 min
 Response: 43344608
 Conc: 495.11 ng/ml



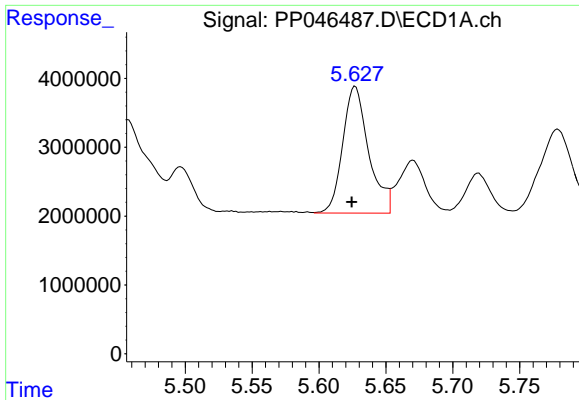
#6 AR-1016-4

R.T.: 5.309 min
 Delta R.T.: 0.003 min
 Response: 26708632
 Conc: 444.24 ng/ml



#6 AR-1016-4

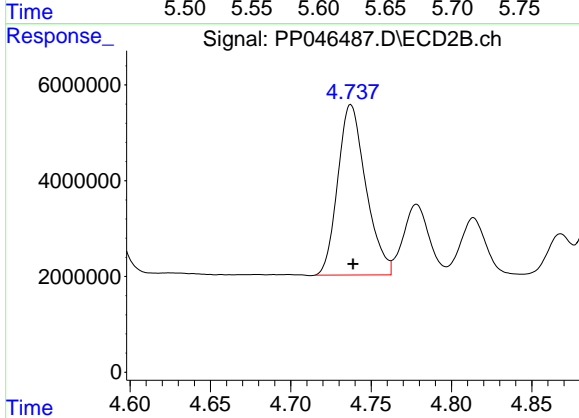
R.T.: 4.514 min
 Delta R.T.: 0.000 min
 Response: 33634077
 Conc: 483.11 ng/ml



#7 AR-1016-5

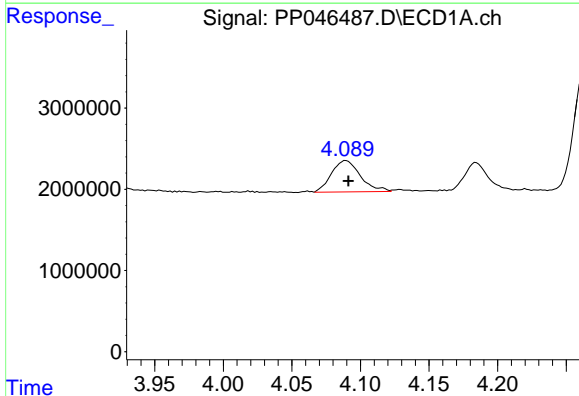
R.T.: 5.627 min
 Delta R.T.: 0.003 min
 Response: 24858229
 Conc: 469.49 ng/ml

Instrument :
 ECD_P
 ClientSampleId :
 PB144294BS



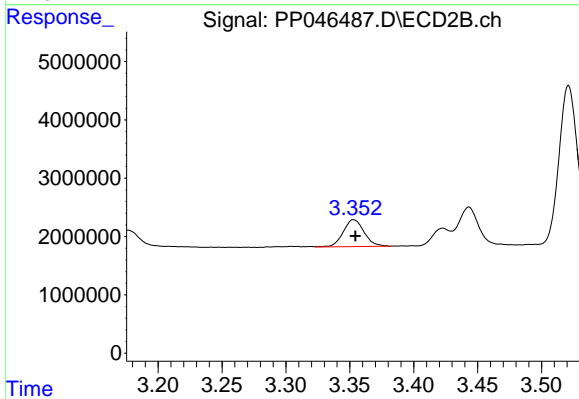
#7 AR-1016-5

R.T.: 4.737 min
 Delta R.T.: -0.001 min
 Response: 43323631
 Conc: 509.37 ng/ml



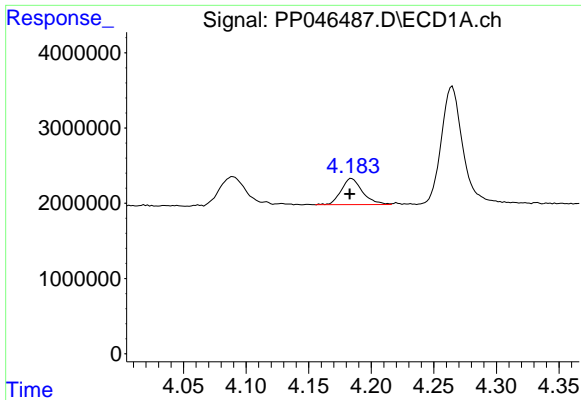
#8 AR-1221-1

R.T.: 4.090 min
 Delta R.T.: -0.002 min
 Response: 5679793
 Conc: 205.95 ng/ml



#8 AR-1221-1

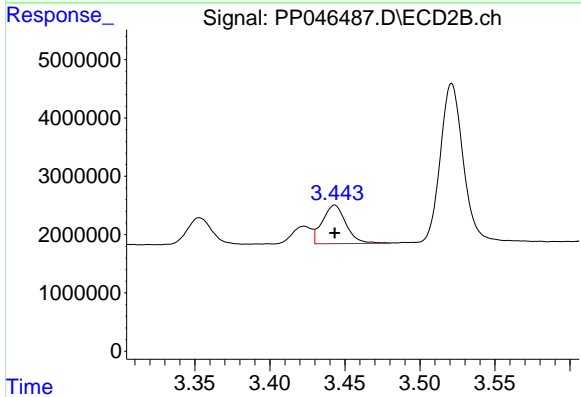
R.T.: 3.353 min
 Delta R.T.: -0.001 min
 Response: 5254027
 Conc: 118.99 ng/ml



#9 AR-1221-2

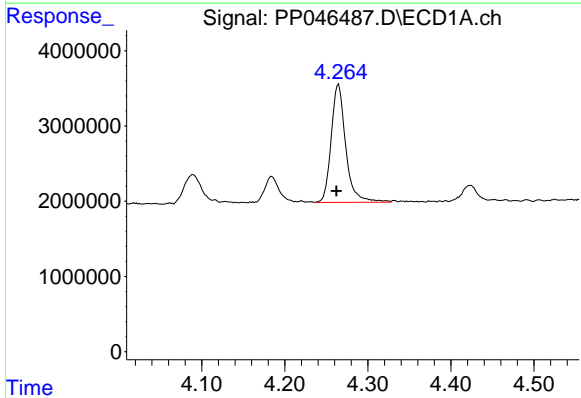
R.T.: 4.184 min
 Delta R.T.: 0.001 min
 Response: 4141656
 Conc: 203.99 ng/ml

Instrument :
 ECD_P
 ClientSampleId :
 PB144294BS



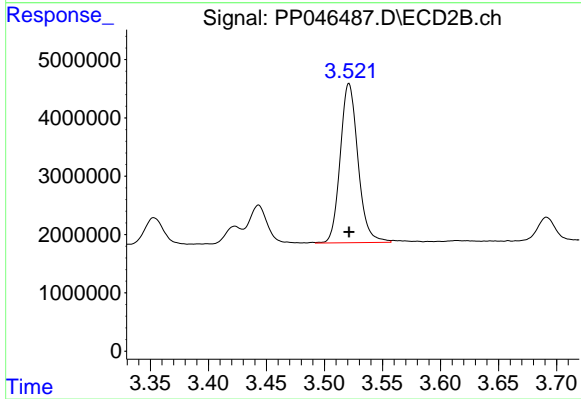
#9 AR-1221-2

R.T.: 3.443 min
 Delta R.T.: 0.000 min
 Response: 7240073
 Conc: 214.36 ng/ml



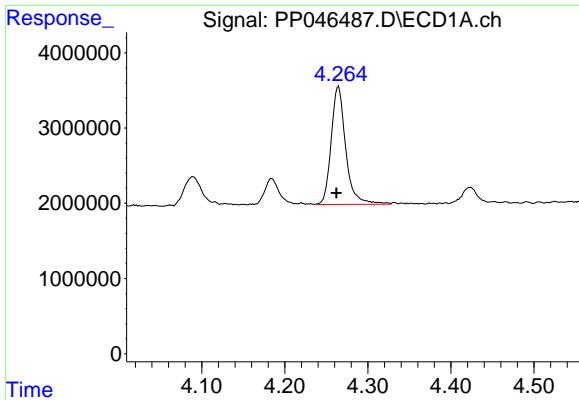
#10 AR-1221-3

R.T.: 4.265 min
 Delta R.T.: 0.003 min
 Response: 19041404
 Conc: 292.11 ng/ml



#10 AR-1221-3

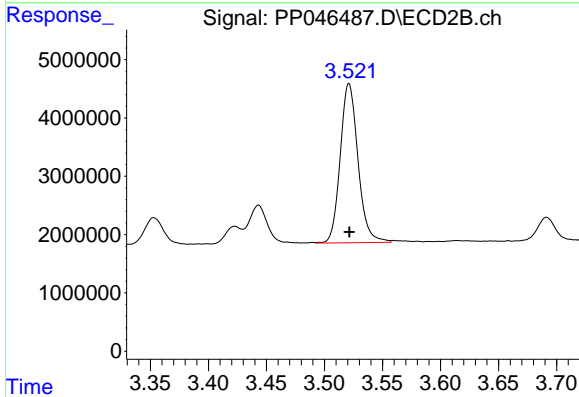
R.T.: 3.521 min
 Delta R.T.: 0.000 min
 Response: 29096328
 Conc: 292.90 ng/ml



#11 AR-1232-1

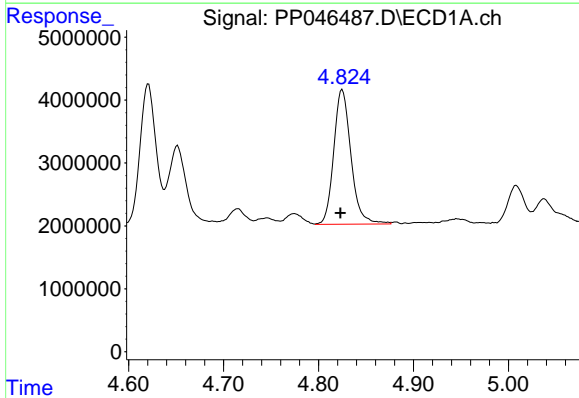
R.T.: 4.265 min
 Delta R.T.: 0.002 min
 Response: 19041404
 Conc: 388.91 ng/ml

Instrument :
 ECD_P
 ClientSampleId :
 PB144294BS



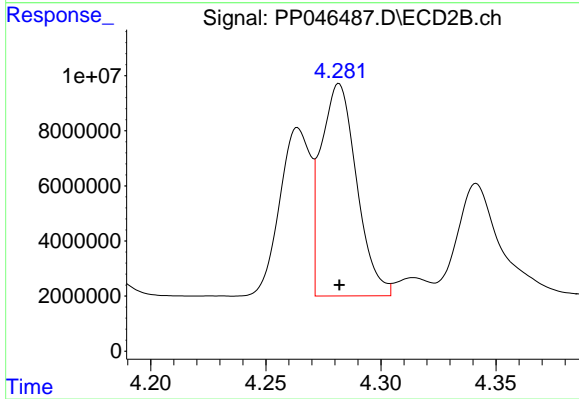
#11 AR-1232-1

R.T.: 3.521 min
 Delta R.T.: 0.000 min
 Response: 29096328
 Conc: 383.55 ng/ml



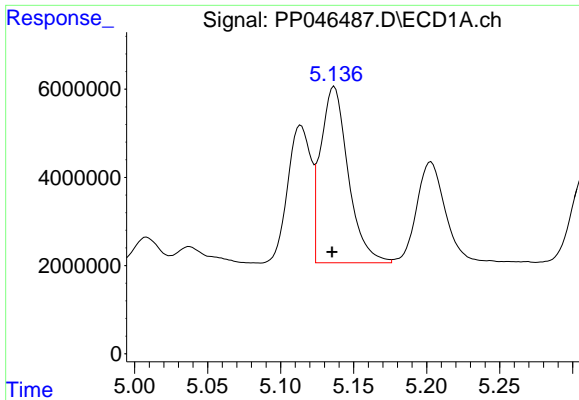
#12 AR-1232-2

R.T.: 4.825 min
 Delta R.T.: 0.002 min
 Response: 26993498
 Conc: 1112.04 ng/ml



#12 AR-1232-2

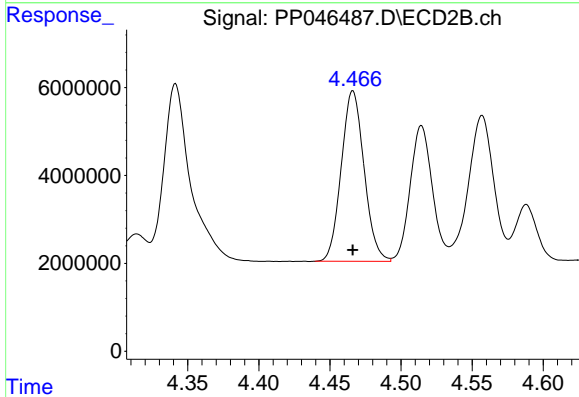
R.T.: 4.282 min
 Delta R.T.: 0.000 min
 Response: 83104149
 Conc: 1152.74 ng/ml



#13 AR-1232-3

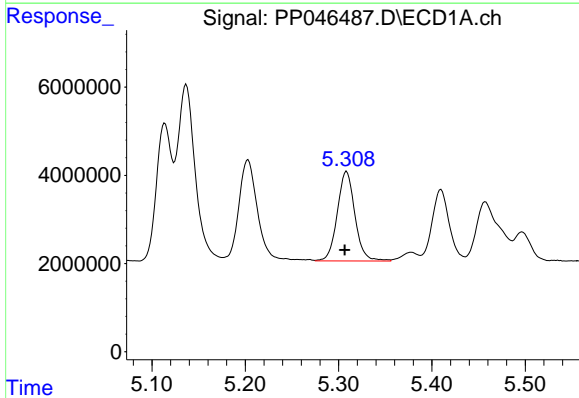
R.T.: 5.137 min
 Delta R.T.: 0.002 min
 Response: 52563597
 Conc: 1112.88 ng/ml

Instrument :
 ECD_P
 ClientSampleId :
 PB144294BS



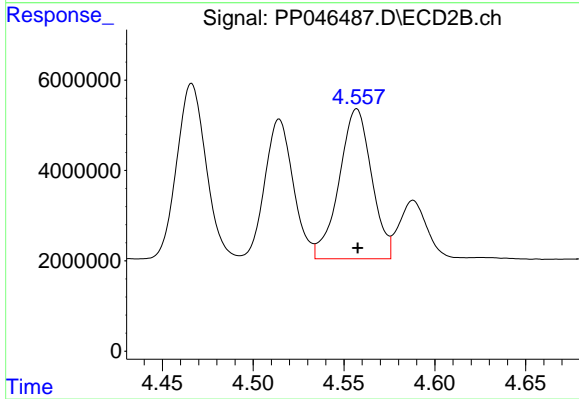
#13 AR-1232-3

R.T.: 4.466 min
 Delta R.T.: 0.000 min
 Response: 43344608
 Conc: 1190.47 ng/ml



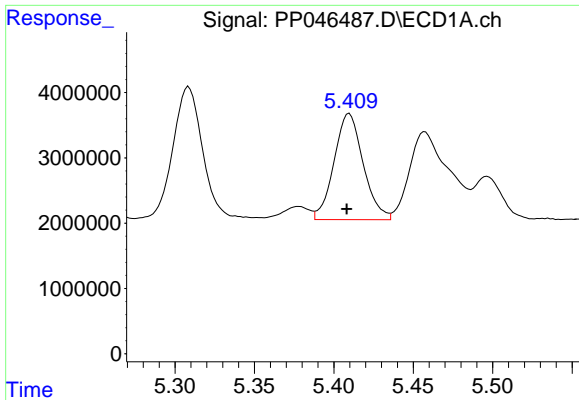
#14 AR-1232-4

R.T.: 5.309 min
 Delta R.T.: 0.002 min
 Response: 26708632
 Conc: 1097.67 ng/ml



#14 AR-1232-4

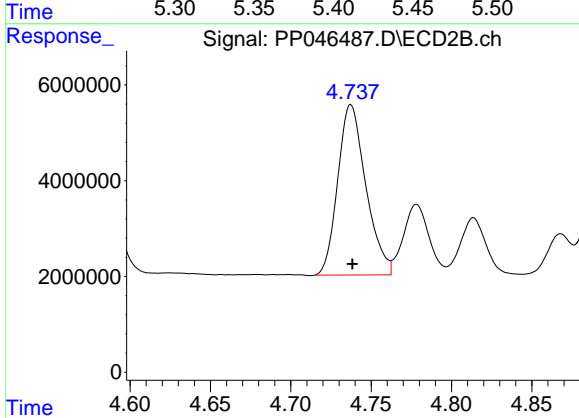
R.T.: 4.557 min
 Delta R.T.: 0.000 min
 Response: 41316119
 Conc: 1296.96 ng/ml



#15 AR-1232-5

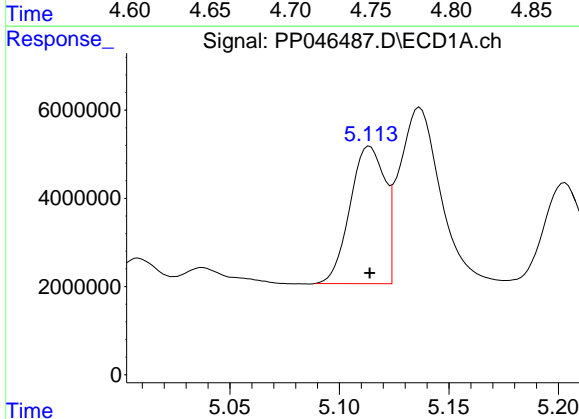
R.T.: 5.410 min
 Delta R.T.: 0.002 min
 Response: 20834905
 Conc: 1252.21 ng/ml

Instrument :
 ECD_P
 ClientSampleId :
 PB144294BS



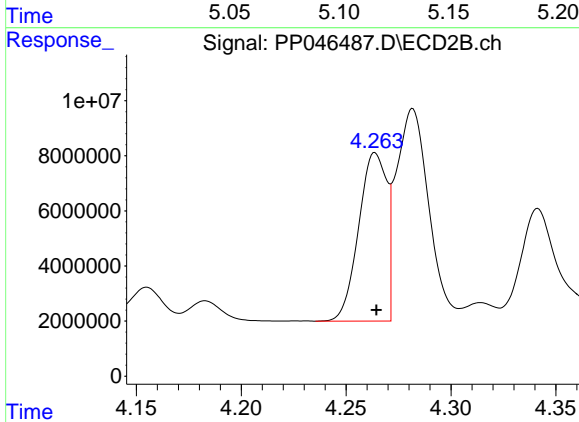
#15 AR-1232-5

R.T.: 4.737 min
 Delta R.T.: 0.000 min
 Response: 43323631
 Conc: 1503.97 ng/ml



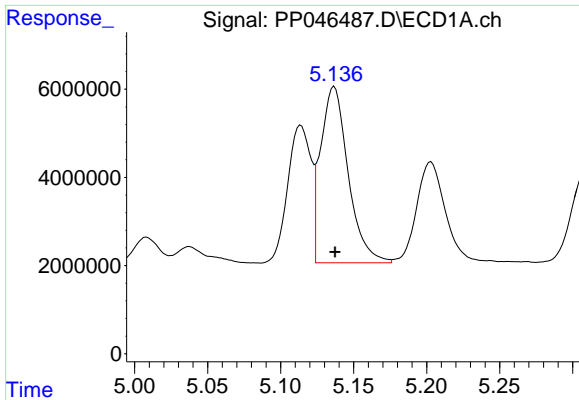
#16 AR-1242-1

R.T.: 5.114 min
 Delta R.T.: 0.000 min
 Response: 34340857
 Conc: 541.62 ng/ml



#16 AR-1242-1

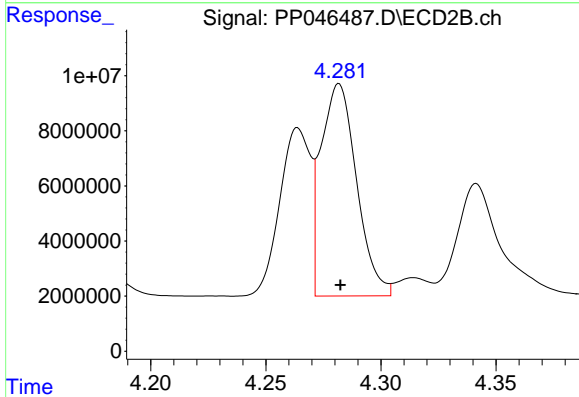
R.T.: 4.264 min
 Delta R.T.: 0.000 min
 Response: 56821300
 Conc: 576.38 ng/ml



#17 AR-1242-2

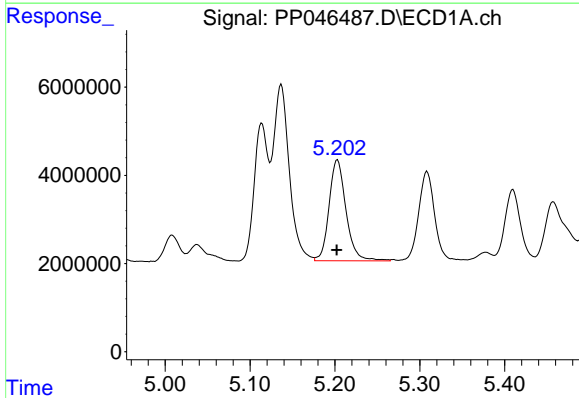
R.T.: 5.137 min
 Delta R.T.: 0.000 min
 Response: 52563597
 Conc: 551.73 ng/ml

Instrument :
 ECD_P
 ClientSampleId :
 PB144294BS



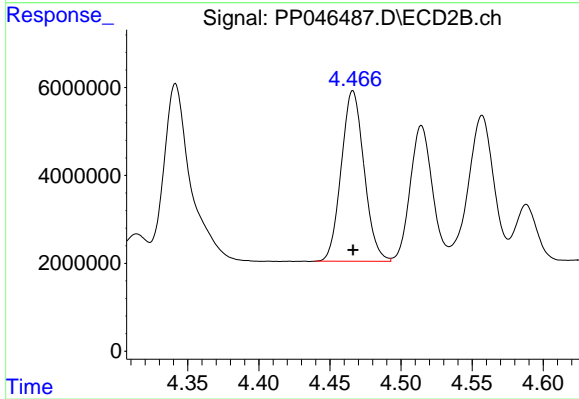
#17 AR-1242-2

R.T.: 4.282 min
 Delta R.T.: 0.000 min
 Response: 83104149
 Conc: 573.76 ng/ml



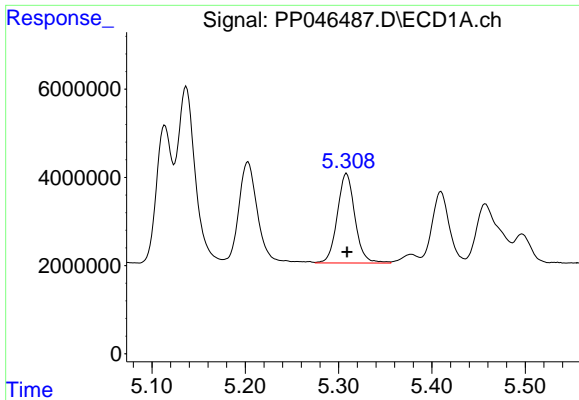
#18 AR-1242-3

R.T.: 5.203 min
 Delta R.T.: 0.000 min
 Response: 31880453
 Conc: 532.54 ng/ml



#18 AR-1242-3

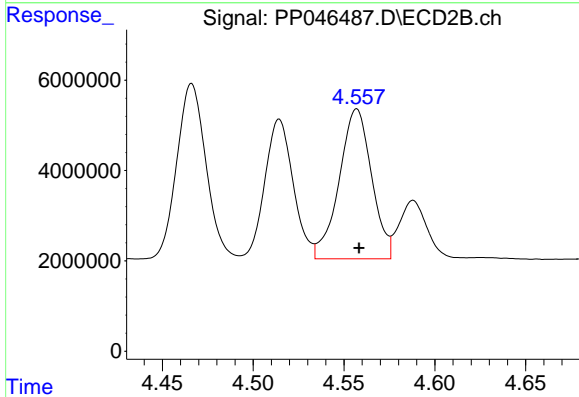
R.T.: 4.466 min
 Delta R.T.: 0.000 min
 Response: 43344608
 Conc: 583.22 ng/ml



#19 AR-1242-4

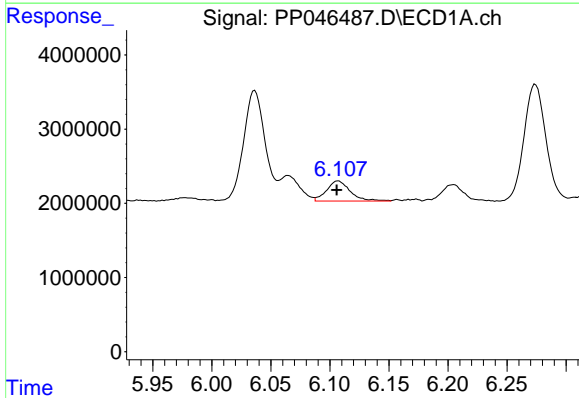
R.T.: 5.309 min
 Delta R.T.: 0.000 min
 Response: 26708632
 Conc: 528.08 ng/ml

Instrument :
 ECD_P
 ClientSampleId :
 PB144294BS



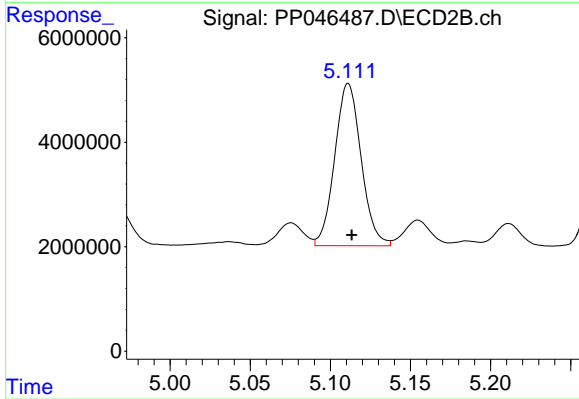
#19 AR-1242-4

R.T.: 4.557 min
 Delta R.T.: -0.001 min
 Response: 41316119
 Conc: 578.49 ng/ml



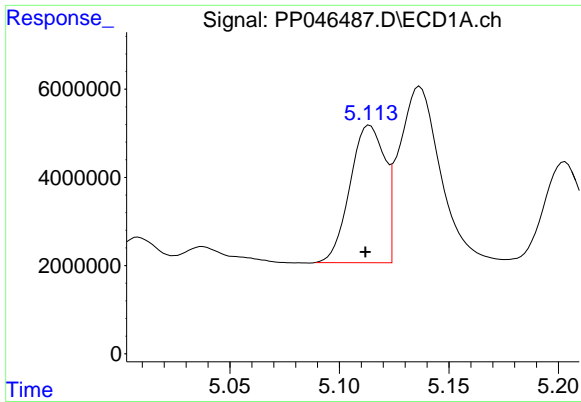
#20 AR-1242-5

R.T.: 6.107 min
 Delta R.T.: 0.001 min
 Response: 3814033
 Conc: 75.69 ng/ml



#20 AR-1242-5

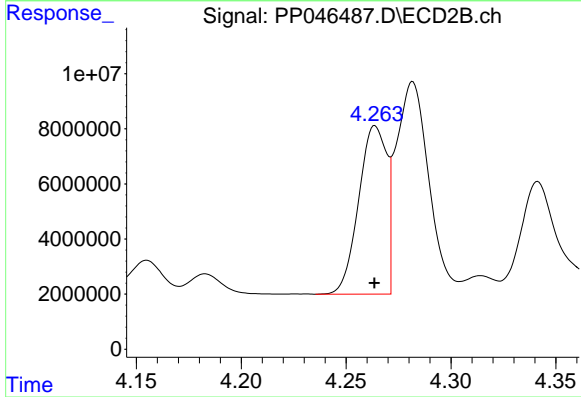
R.T.: 5.111 min
 Delta R.T.: -0.002 min
 Response: 35625146
 Conc: 369.21 ng/ml



#21 AR-1248-1

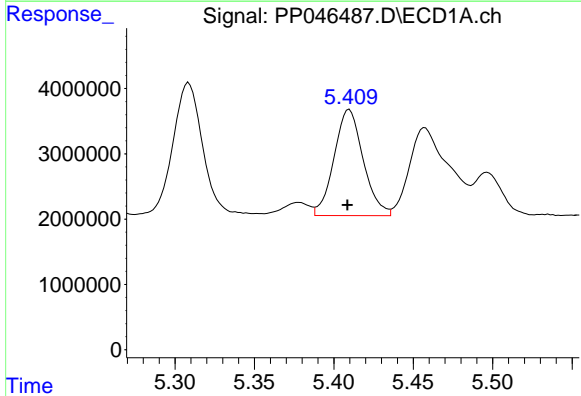
R.T.: 5.114 min
 Delta R.T.: 0.002 min
 Response: 34340857
 Conc: 821.65 ng/ml

Instrument :
 ECD_P
 ClientSampleId :
 PB144294BS



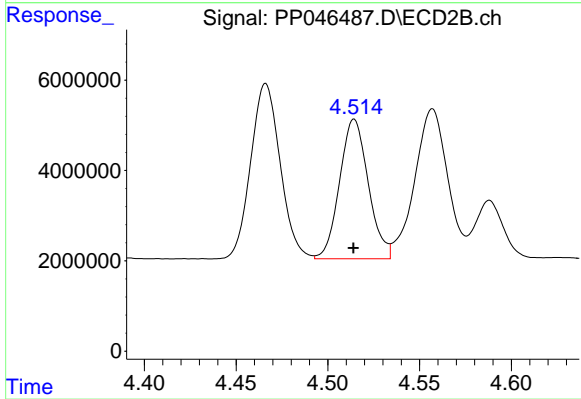
#21 AR-1248-1

R.T.: 4.264 min
 Delta R.T.: 0.000 min
 Response: 56821300
 Conc: 826.90 ng/ml



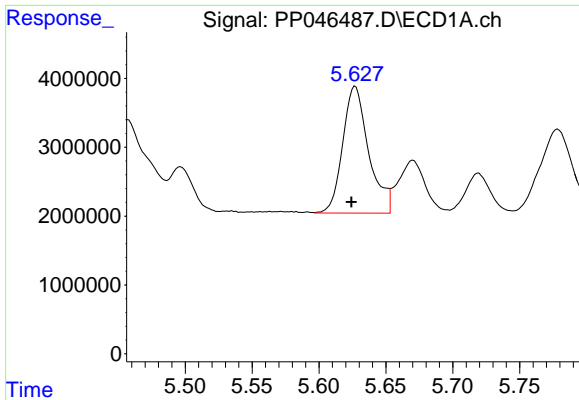
#22 AR-1248-2

R.T.: 5.410 min
 Delta R.T.: 0.001 min
 Response: 20834905
 Conc: 352.51 ng/ml



#22 AR-1248-2

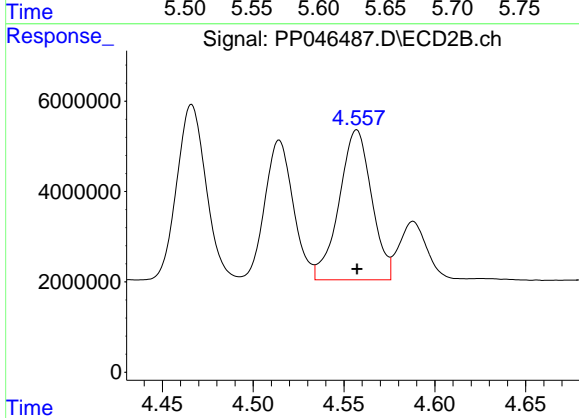
R.T.: 4.514 min
 Delta R.T.: 0.000 min
 Response: 33634077
 Conc: 359.75 ng/ml



#23 AR-1248-3

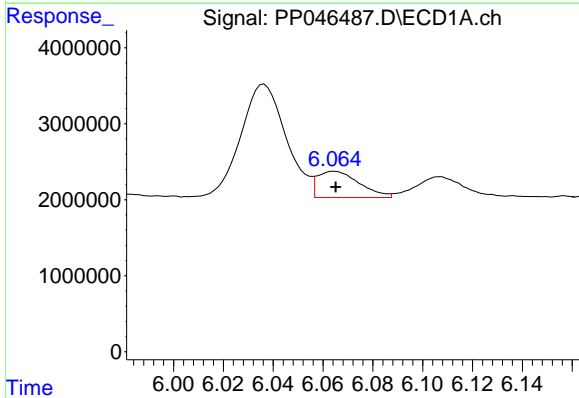
R.T.: 5.627 min
 Delta R.T.: 0.003 min
 Response: 24858229
 Conc: 355.87 ng/ml

Instrument :
 ECD_P
 ClientSampleId :
 PB144294BS



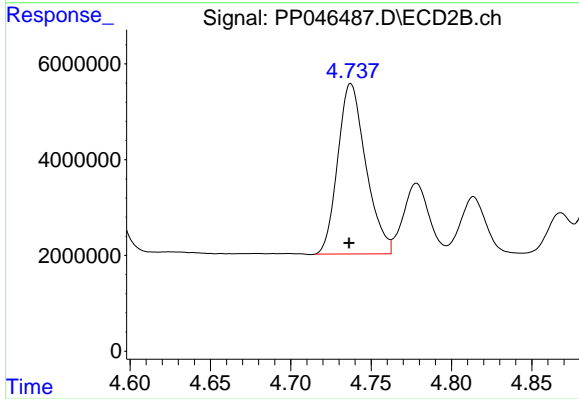
#23 AR-1248-3

R.T.: 4.557 min
 Delta R.T.: 0.000 min
 Response: 41316119
 Conc: 423.22 ng/ml



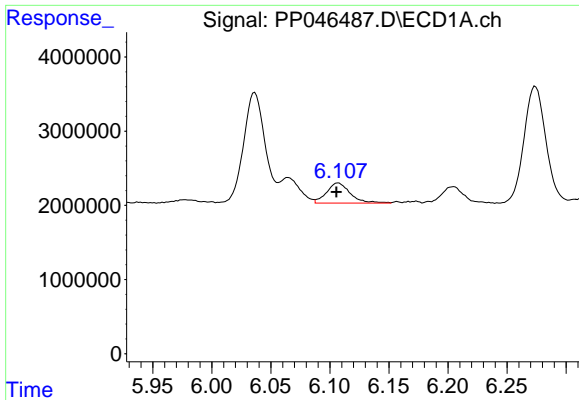
#24 AR-1248-4

R.T.: 6.065 min
 Delta R.T.: 0.000 min
 Response: 4019302
 Conc: 52.42 ng/ml



#24 AR-1248-4

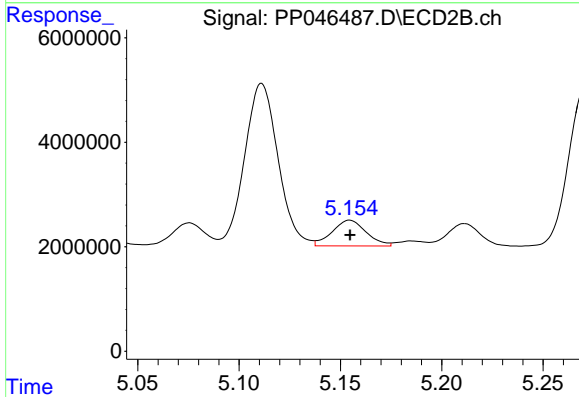
R.T.: 4.737 min
 Delta R.T.: 0.001 min
 Response: 43323631
 Conc: 368.03 ng/ml



#25 AR-1248-5

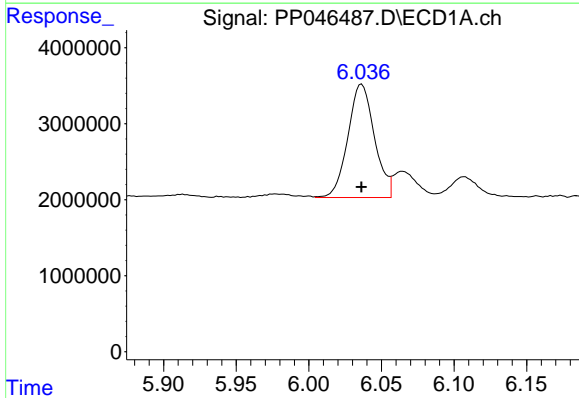
R.T.: 6.107 min
 Delta R.T.: 0.002 min
 Response: 3814033
 Conc: 49.04 ng/ml

Instrument :
 ECD_P
 ClientSampleId :
 PB144294BS



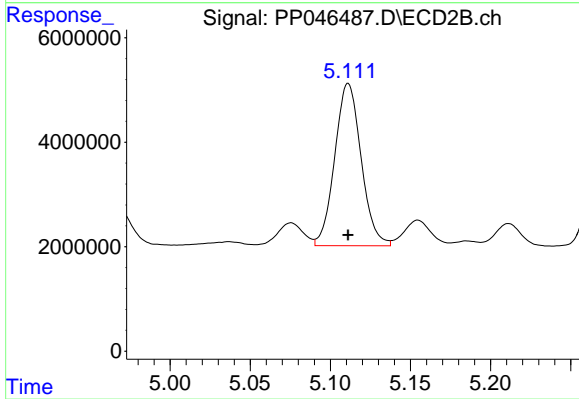
#25 AR-1248-5

R.T.: 5.155 min
 Delta R.T.: 0.000 min
 Response: 5787886
 Conc: 47.50 ng/ml



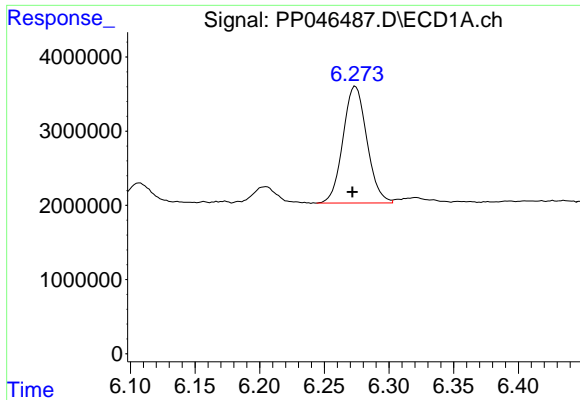
#26 AR-1254-1

R.T.: 6.036 min
 Delta R.T.: 0.000 min
 Response: 18918879
 Conc: 325.71 ng/ml



#26 AR-1254-1

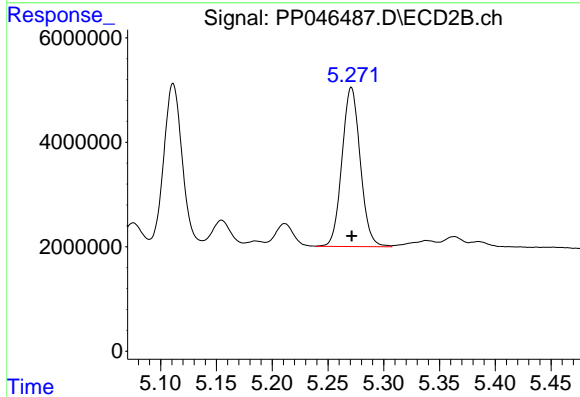
R.T.: 5.111 min
 Delta R.T.: 0.000 min
 Response: 35625146
 Conc: 184.62 ng/ml



#27 AR-1254-2

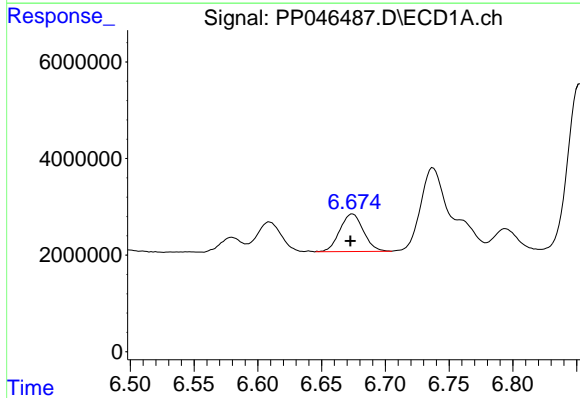
R.T.: 6.274 min
 Delta R.T.: 0.002 min
 Response: 20233587
 Conc: 164.18 ng/ml

Instrument :
 ECD_P
 ClientSampleId :
 PB144294BS



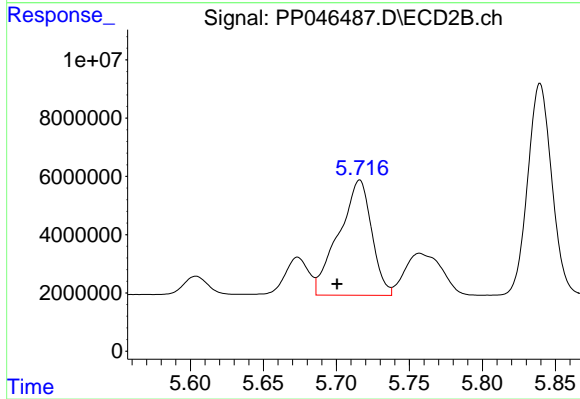
#27 AR-1254-2

R.T.: 5.271 min
 Delta R.T.: 0.000 min
 Response: 34788337
 Conc: 208.91 ng/ml



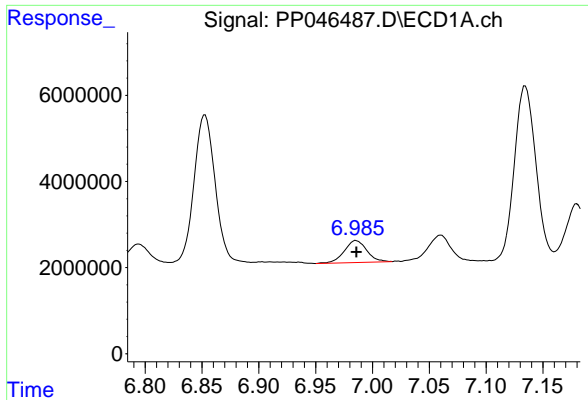
#28 AR-1254-3

R.T.: 6.674 min
 Delta R.T.: 0.002 min
 Response: 10001007
 Conc: 75.58 ng/ml



#28 AR-1254-3

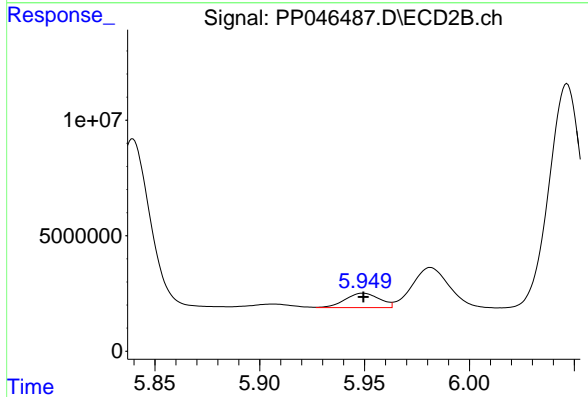
R.T.: 5.716 min
 Delta R.T.: 0.016 min
 Response: 61945438
 Conc: 248.43 ng/ml



#29 AR-1254-4

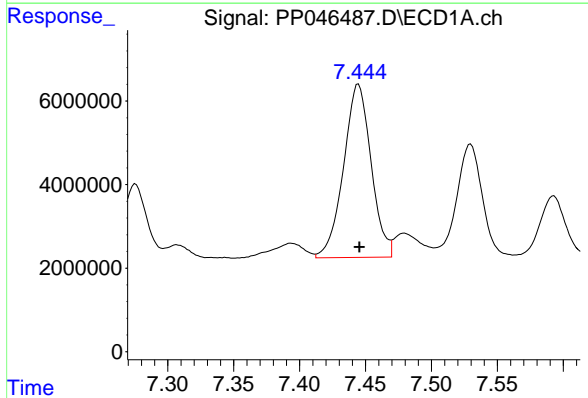
R.T.: 6.986 min
 Delta R.T.: 0.000 min
 Response: 7085988
 Conc: 71.29 ng/ml

Instrument :
 ECD_P
 ClientSampleId :
 PB144294BS



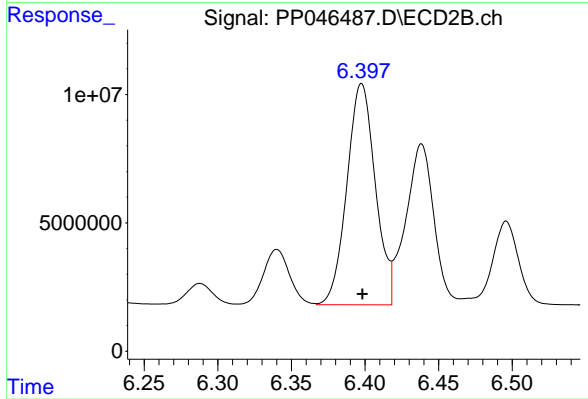
#29 AR-1254-4

R.T.: 5.949 min
 Delta R.T.: 0.000 min
 Response: 7106767
 Conc: 41.42 ng/ml



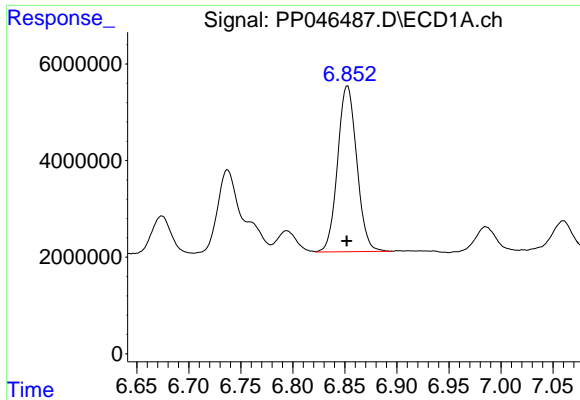
#30 AR-1254-5

R.T.: 7.445 min
 Delta R.T.: 0.000 min
 Response: 60311352
 Conc: 685.72 ng/ml



#30 AR-1254-5

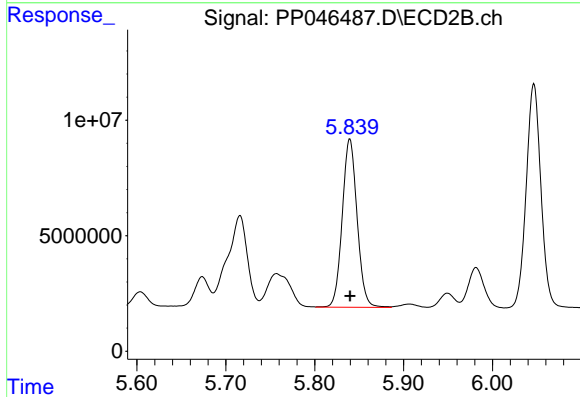
R.T.: 6.398 min
 Delta R.T.: 0.000 min
 Response: 116071906
 Conc: 531.94 ng/ml



#31 AR-1260-1

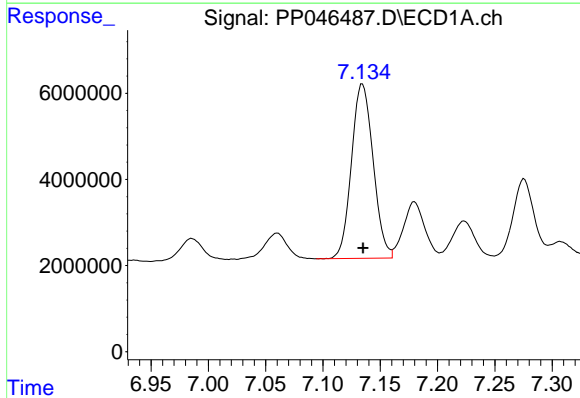
R.T.: 6.853 min
 Delta R.T.: 0.000 min
 Response: 44034822
 Conc: 521.81 ng/ml

Instrument :
 ECD_P
 ClientSampleId :
 PB144294BS



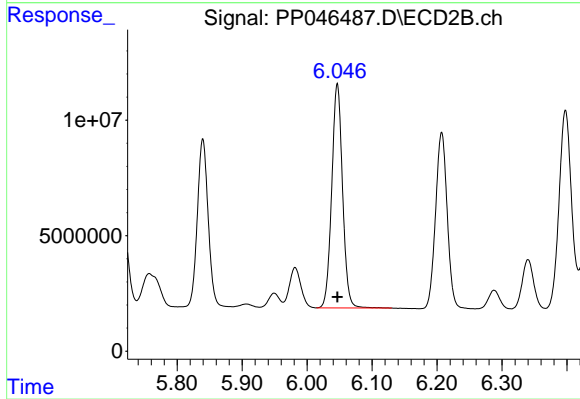
#31 AR-1260-1

R.T.: 5.840 min
 Delta R.T.: 0.000 min
 Response: 84532701
 Conc: 531.23 ng/ml



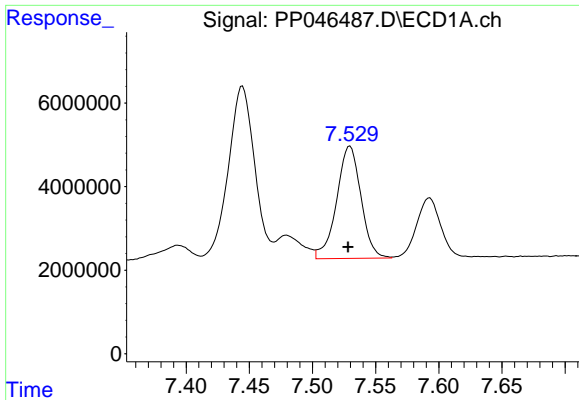
#32 AR-1260-2

R.T.: 7.135 min
 Delta R.T.: 0.000 min
 Response: 53243022
 Conc: 528.77 ng/ml



#32 AR-1260-2

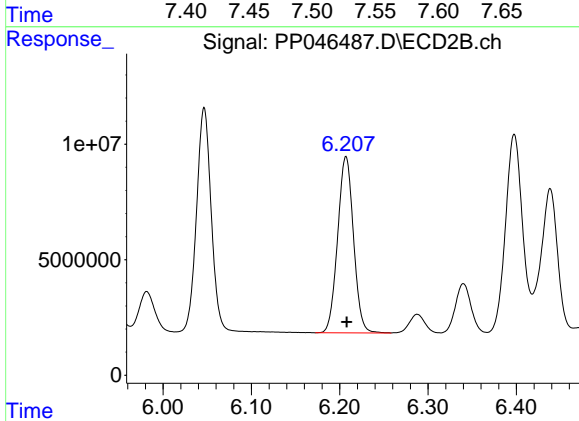
R.T.: 6.047 min
 Delta R.T.: 0.000 min
 Response: 112122703
 Conc: 551.20 ng/ml



#33 AR-1260-3

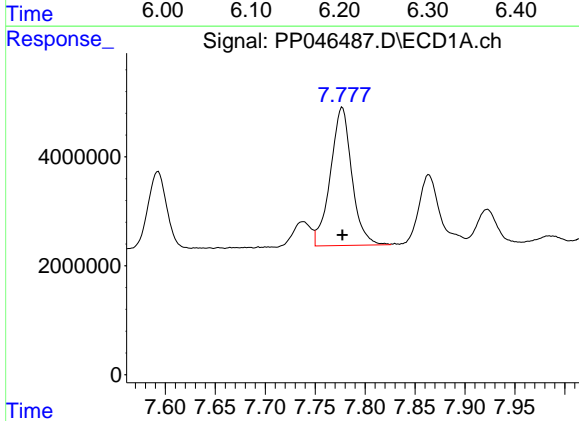
R.T.: 7.530 min
Delta R.T.: 0.002 min
Response: 36070877
Conc: 445.25 ng/ml

Instrument :
ECD_P
ClientSampleId :
PB144294BS



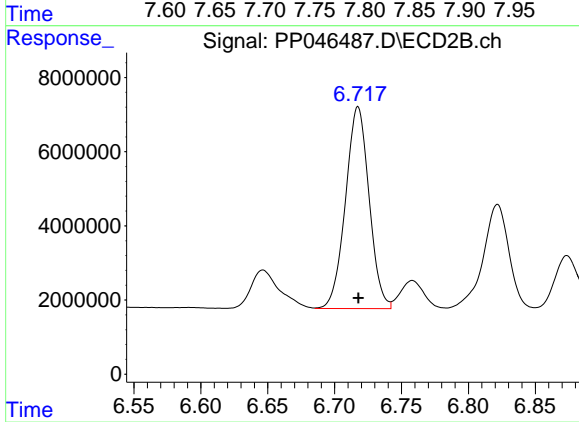
#33 AR-1260-3

R.T.: 6.207 min
Delta R.T.: 0.000 min
Response: 95351059
Conc: 558.21 ng/ml



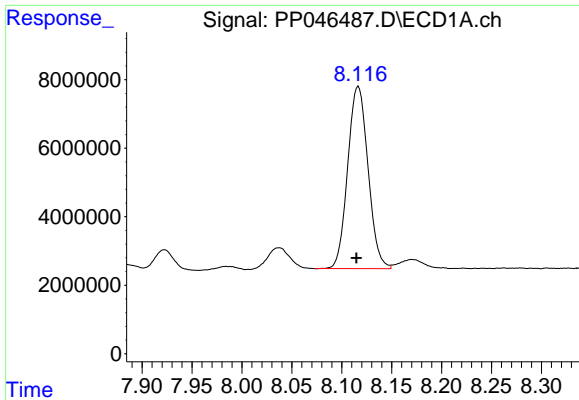
#34 AR-1260-4

R.T.: 7.777 min
Delta R.T.: 0.000 min
Response: 37985472
Conc: 476.90 ng/ml



#34 AR-1260-4

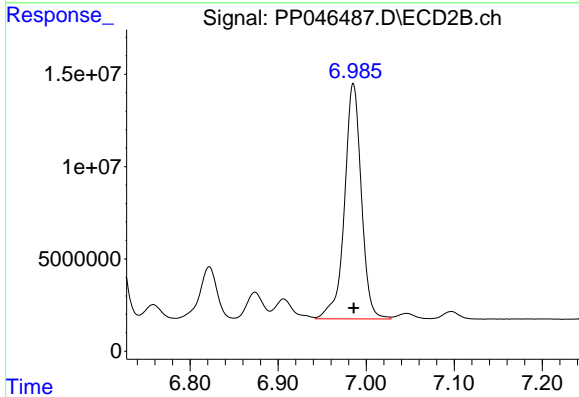
R.T.: 6.718 min
Delta R.T.: 0.000 min
Response: 66968215
Conc: 460.76 ng/ml



#35 AR-1260-5

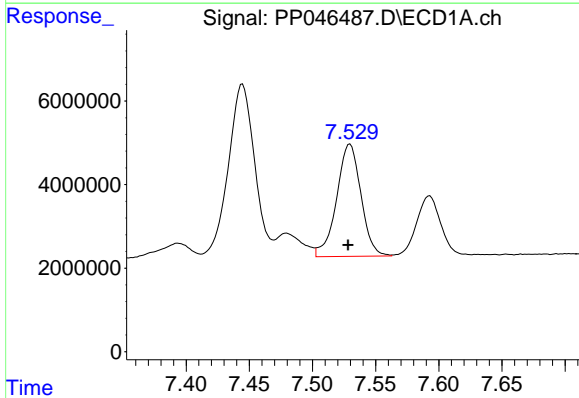
R.T.: 8.117 min
 Delta R.T.: 0.002 min
 Response: 75335279
 Conc: 474.27 ng/ml

Instrument :
 ECD_P
 ClientSampleId :
 PB144294BS



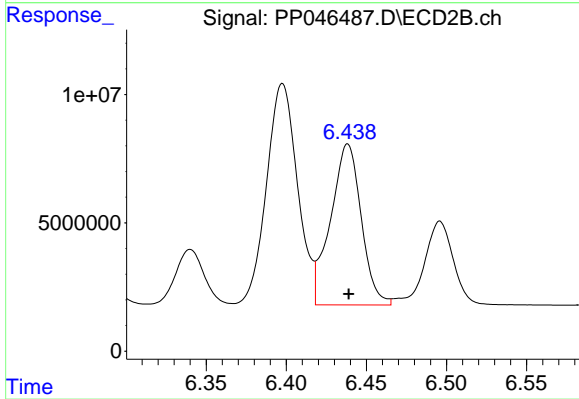
#35 AR-1260-5

R.T.: 6.985 min
 Delta R.T.: 0.000 min
 Response: 169740271
 Conc: 483.42 ng/ml



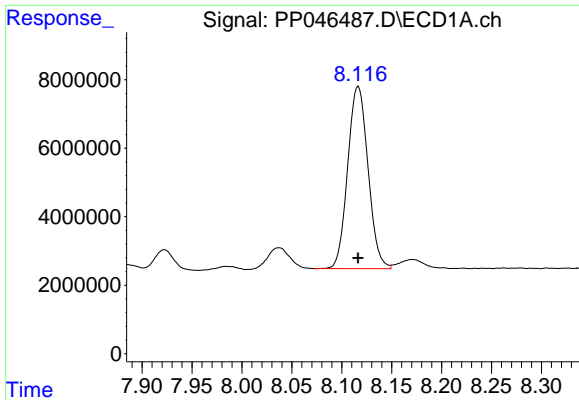
#36 AR-1262-1

R.T.: 7.530 min
 Delta R.T.: 0.002 min
 Response: 36070877
 Conc: 298.43 ng/ml



#36 AR-1262-1

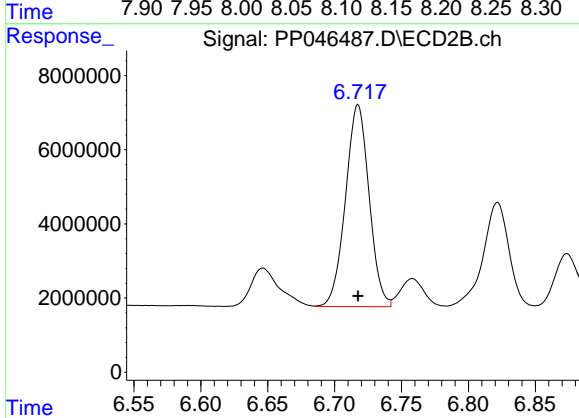
R.T.: 6.438 min
 Delta R.T.: 0.000 min
 Response: 83635516
 Conc: 338.56 ng/ml



#37 AR-1262-2

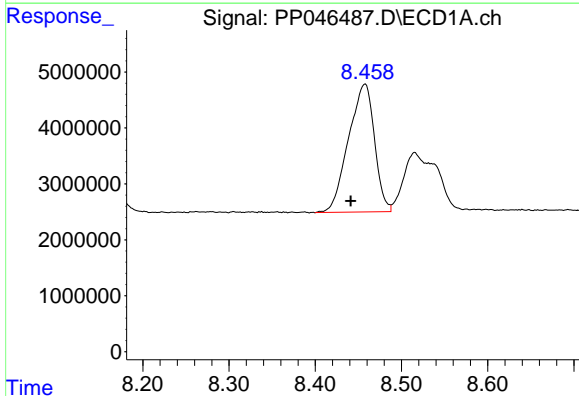
R.T.: 8.117 min
 Delta R.T.: 0.000 min
 Response: 75335279
 Conc: 391.74 ng/ml

Instrument :
 ECD_P
 ClientSampleId :
 PB144294BS



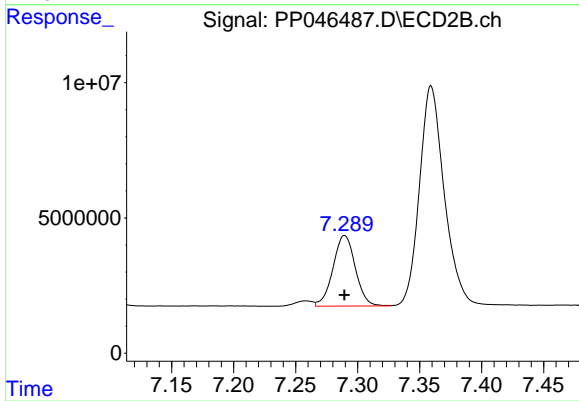
#37 AR-1262-2

R.T.: 6.718 min
 Delta R.T.: 0.000 min
 Response: 66968215
 Conc: 346.47 ng/ml



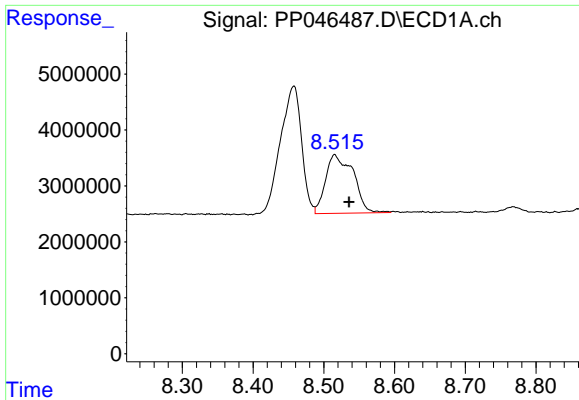
#38 AR-1262-3

R.T.: 8.458 min
 Delta R.T.: 0.017 min
 Response: 47824691
 Conc: 356.21 ng/ml



#38 AR-1262-3

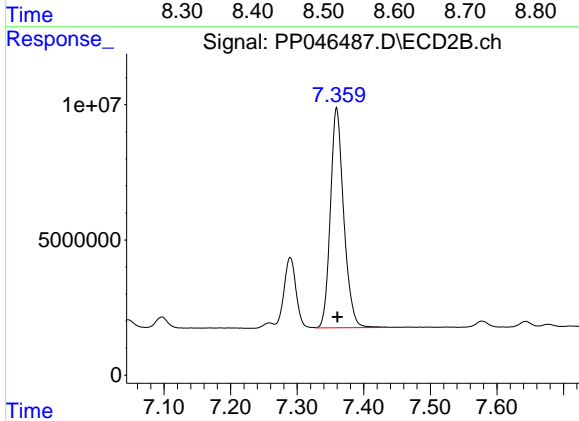
R.T.: 7.289 min
 Delta R.T.: 0.000 min
 Response: 32658455
 Conc: 201.14 ng/ml



#39 AR-1262-4

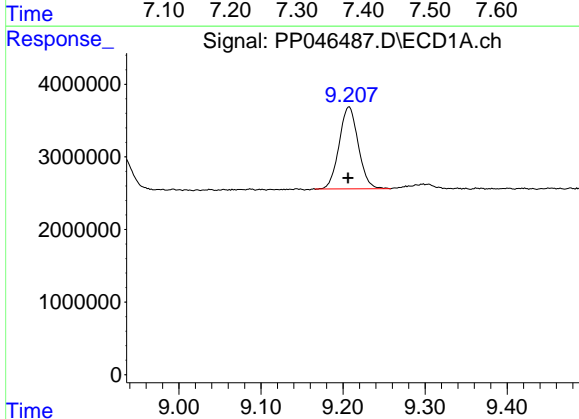
R.T.: 8.516 min
Delta R.T.: -0.020 min
Response: 28571542
Conc: 453.65 ng/ml

Instrument :
ECD_P
ClientSampleId :
PB144294BS



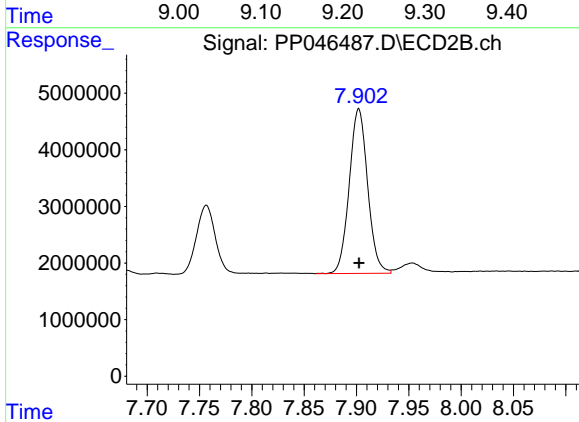
#39 AR-1262-4

R.T.: 7.359 min
Delta R.T.: -0.001 min
Response: 113312505
Conc: 395.65 ng/ml



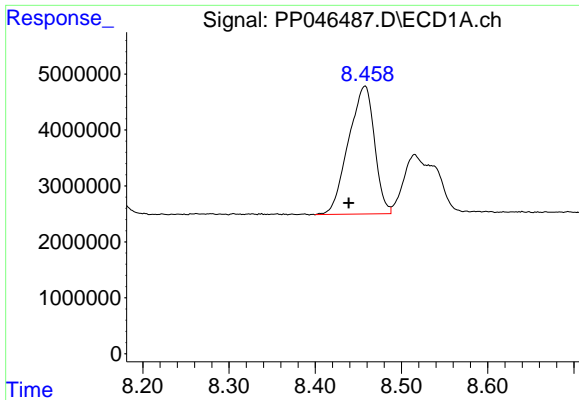
#40 AR-1262-5

R.T.: 9.208 min
Delta R.T.: 0.001 min
Response: 18324608
Conc: 265.59 ng/ml



#40 AR-1262-5

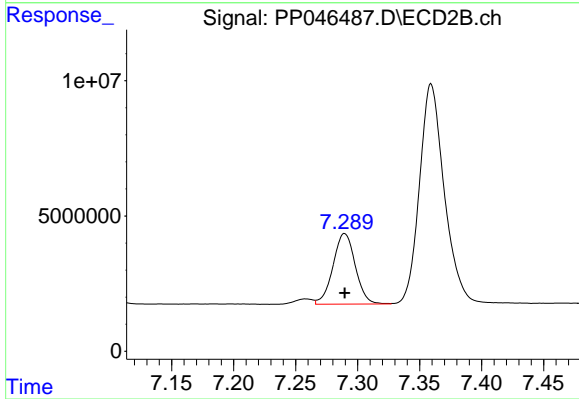
R.T.: 7.902 min
Delta R.T.: 0.000 min
Response: 35586427
Conc: 271.22 ng/ml



#41 AR-1268-1

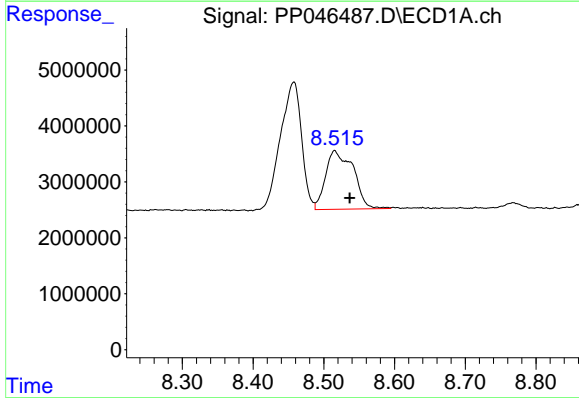
R.T.: 8.458 min
Delta R.T.: 0.019 min
Response: 47824691
Conc: 198.96 ng/ml

Instrument :
ECD_P
ClientSampleId :
PB144294BS



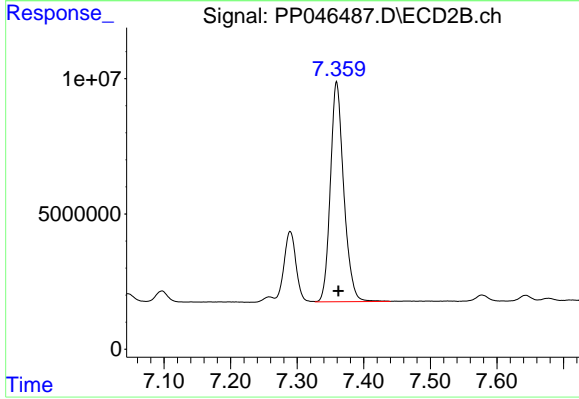
#41 AR-1268-1

R.T.: 7.289 min
Delta R.T.: 0.000 min
Response: 32658455
Conc: 68.16 ng/ml



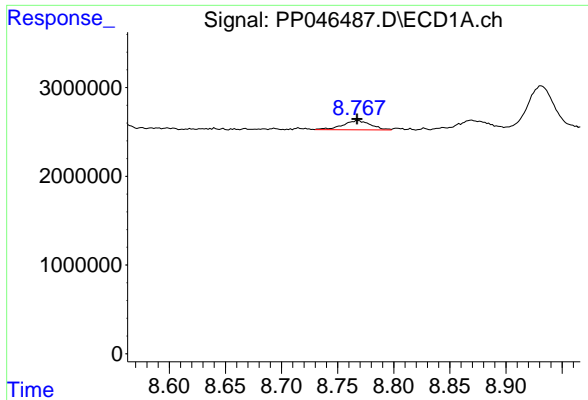
#42 AR-1268-2

R.T.: 8.516 min
Delta R.T.: -0.021 min
Response: 28571542
Conc: 129.04 ng/ml



#42 AR-1268-2

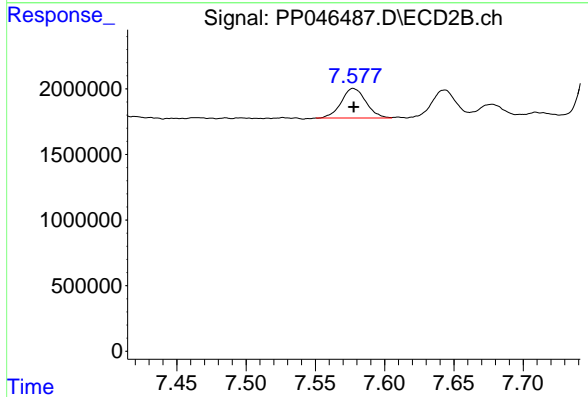
R.T.: 7.359 min
Delta R.T.: -0.003 min
Response: 113312505
Conc: 267.53 ng/ml



#43 AR-1268-3

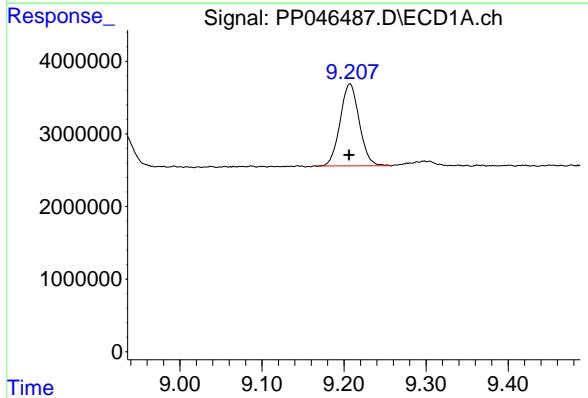
R.T.: 8.768 min
 Delta R.T.: 0.000 min
 Response: 1797120
 Conc: 9.36 ng/ml

Instrument :
 ECD_P
 ClientSampleId :
 PB144294BS



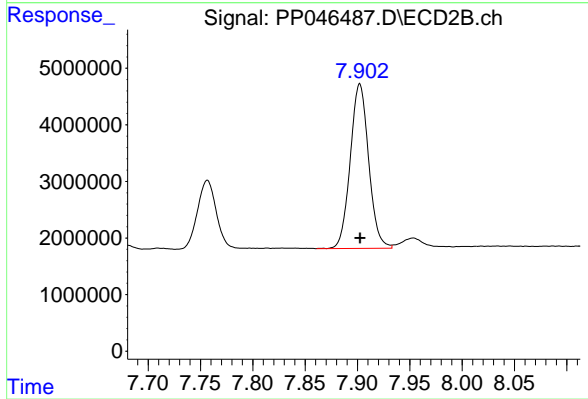
#43 AR-1268-3

R.T.: 7.577 min
 Delta R.T.: 0.000 min
 Response: 2804349
 Conc: 7.93 ng/ml



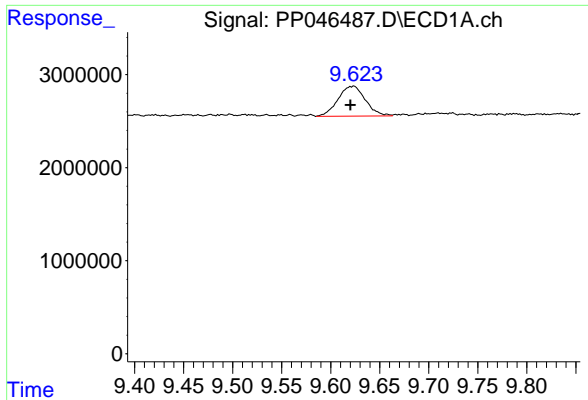
#44 AR-1268-4

R.T.: 9.208 min
 Delta R.T.: 0.001 min
 Response: 18324608
 Conc: 237.51 ng/ml



#44 AR-1268-4

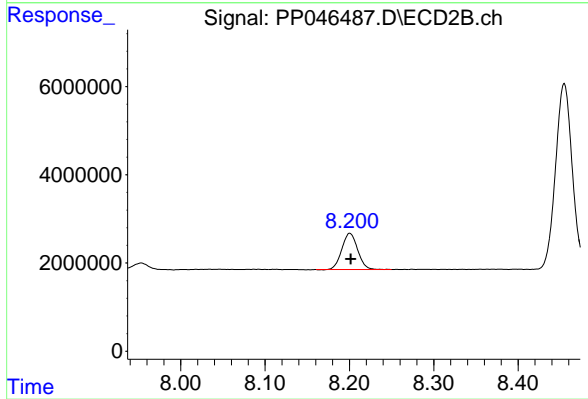
R.T.: 7.902 min
 Delta R.T.: 0.000 min
 Response: 35586427
 Conc: 241.99 ng/ml



#45 AR-1268-5

R.T.: 9.624 min
Delta R.T.: 0.004 min
Response: 6265967
Conc: 11.19 ng/ml

Instrument :
ECD_P
ClientSampleId :
PB144294BS



#45 AR-1268-5

R.T.: 8.200 min
Delta R.T.: -0.001 min
Response: 10667776
Conc: 10.43 ng/ml