

Data Path : Z:\pestpcbsrv\HPCHEM1\ECD_P\Data\PP042222\
 Data File : PP046520.D
 Signal(s) : Signal #1: ECD1A.ch Signal #2: ECD2B.ch
 Acq On : 24 Apr 2022 01:17
 Operator : YP\AJ
 Sample : I.BLK
 Misc :
 ALS Vial : 2 Sample Multiplier: 1

Instrument :
 ECD_P
 ClientSampleId :
 1593

Integration File signal 1: autoint1.e
 Integration File signal 2: autoint2.e
 Quant Time: Apr 24 21:11:09 2022
 Quant Method : Z:\pestpcbsrv\HPCHEM1\ECD_P\methods\PP042222.M
 Quant Title : GC EXTRACTABLES
 QLast Update : Fri Apr 22 19:00:06 2022
 Response via : Initial Calibration
 Integrator: ChemStation

Volume Inj. : 2 µl
 Signal #1 Phase : ZB-MR1 Signal #2 Phase: ZB-MR2
 Signal #1 Info : 30Mx0.32mmx 0.50µ Signal #2 Info : 30M x 0.32mm x 0.25µm

Compound	RT#1	RT#2	Resp#1	Resp#2	ng/ml	ng/ml

System Monitoring Compounds						
1) SA Tetrachlo...	3.868	3.129	61683753	86117707	25.553	26.252
2) SA Decachlor...	9.958	8.454	38625956	66458759	26.249	27.862
Target Compounds						
3) L1 AR-1016-1	5.122	4.263	116037	20221	1.541	0.176 #
4) L1 AR-1016-2	5.150	4.282	207125	59580	1.819	0.351 #
5) L1 AR-1016-3	5.200	4.462	308232	218139	4.312	2.492 #
6) L1 AR-1016-4	5.299	4.531f	776917	271947	12.922	3.906 #
7) L1 AR-1016-5	5.630	4.755f	1087747	5486113	20.544	64.503 #
8) L2 AR-1221-1	4.087	3.358	99130	48772	3.594	1.105 #
9) L2 AR-1221-2	4.173	3.440	71425	1138547	3.518	33.710 #
10) L2 AR-1221-3	4.252	3.516	130686	65819	2.005	0.663 #
11) L3 AR-1232-1	4.252	3.516	130686	65819	2.669	0.868 #
12) L3 AR-1232-2	4.834	4.282	81409	59580	3.354	0.826 #
13) L3 AR-1232-3	5.122	4.462	116037	218139	2.457	5.991 #
14) L3 AR-1232-4	5.314	4.554	492848	58318	20.255	1.831 #
15) L3 AR-1232-5	5.398	4.755f	760603	5486113	45.713	190.449 #
16) L4 AR-1242-1	5.122	4.263	116037	20221	1.830	0.205 #
17) L4 AR-1242-2	5.150	4.282	207125	59580	2.174	0.411 #
18) L4 AR-1242-3	5.200	4.462	308232	218139	5.149	2.935 #
19) L4 AR-1242-4	5.314	4.554	492848	58318	9.745	0.817 #
20) L4 AR-1242-5	6.105	5.099	1573803	123816	31.232	1.283 #
21) L5 AR-1248-1	5.122	4.263	116037	20221	2.776	0.294 #
22) L5 AR-1248-2	5.398	4.531f	760603	271947	12.869	2.909 #
23) L5 AR-1248-3	5.619	4.554	682595	58318	9.772	0.597 #
24) L5 AR-1248-4	6.062	4.755f	3296623	5486113	42.991	46.604
25) L5 AR-1248-5	6.105	5.175f	1573803	281084	20.234	2.307 #
26) L6 AR-1254-1	6.062f	5.099	3296623	123816	56.754	0.642 #
27) L6 AR-1254-2	6.274	5.268	787251	246135	6.388	1.478 #
28) L6 AR-1254-3	6.682	5.699	2144407	115994	16.206	0.465 #
29) L6 AR-1254-4	6.991	5.947	507544	112155	5.107	0.654 #
30) L6 AR-1254-5	7.441	6.419f	119194	55964	1.355	0.256 #
31) L7 AR-1260-1	6.842	5.847	178295	42336	2.113	0.266 #
32) L7 AR-1260-2	7.139	6.030f	144508	1655988	1.435	8.141 #
33) L7 AR-1260-3	7.519	6.198	107613	606618	1.328	3.551 #
34) L7 AR-1260-4	7.784	6.709	162652	42187	2.042	0.290 #
35) L7 AR-1260-5	8.108	6.993	37572	670598	0.237	1.910 #
36) L8 AR-1262-1	7.519	6.444	107613	97346	0.890	0.394 #
37) L8 AR-1262-2	8.108	6.709	37572	42187	0.195	0.218
38) L8 AR-1262-3	8.442	7.292	58185	176861	0.433	1.089 #
39) L8 AR-1262-4	8.553f	7.365	87794	84744	1.394	0.296 #
40) L8 AR-1262-5	9.207	7.906	77709	48345	1.126	0.368 #
41) L9 AR-1268-1	8.442	7.292	58185	176861	0.242	0.369 #

Data Path : Z:\pestpcbsrv\HPCHEM1\ECD_P\Data\PP042222\
 Data File : PP046520.D
 Signal(s) : Signal #1: ECD1A.ch Signal #2: ECD2B.ch
 Acq On : 24 Apr 2022 01:17
 Operator : YP\AJ
 Sample : I.BLK
 Misc :
 ALS Vial : 2 Sample Multiplier: 1

Instrument :
 ECD_P
 ClientSampleId :
 1593

Integration File signal 1: autoint1.e
 Integration File signal 2: autoint2.e
 Quant Time: Apr 24 21:11:09 2022
 Quant Method : Z:\pestpcbsrv\HPCHEM1\ECD_P\methods\PP042222.M
 Quant Title : GC EXTRACTABLES
 QLast Update : Fri Apr 22 19:00:06 2022
 Response via : Initial Calibration
 Integrator: ChemStation

Volume Inj. : 2 µl
 Signal #1 Phase : ZB-MR1 Signal #2 Phase: ZB-MR2
 Signal #1 Info : 30Mx0.32mmx 0.50µ Signal #2 Info : 30M x 0.32mm x 0.25µm

	Compound	RT#1	RT#2	Resp#1	Resp#2	ng/ml	ng/ml
42)	L9 AR-1268-2	8.553f	7.365	87794	84744	0.397	0.200 #
43)	L9 AR-1268-3	8.769	7.572	105078	199973	0.547	0.565
44)	L9 AR-1268-4	9.207	7.906	77709	48345	1.007	0.329 #
45)	L9 AR-1268-5	9.622	8.199	388724	473341	0.694	0.463 #

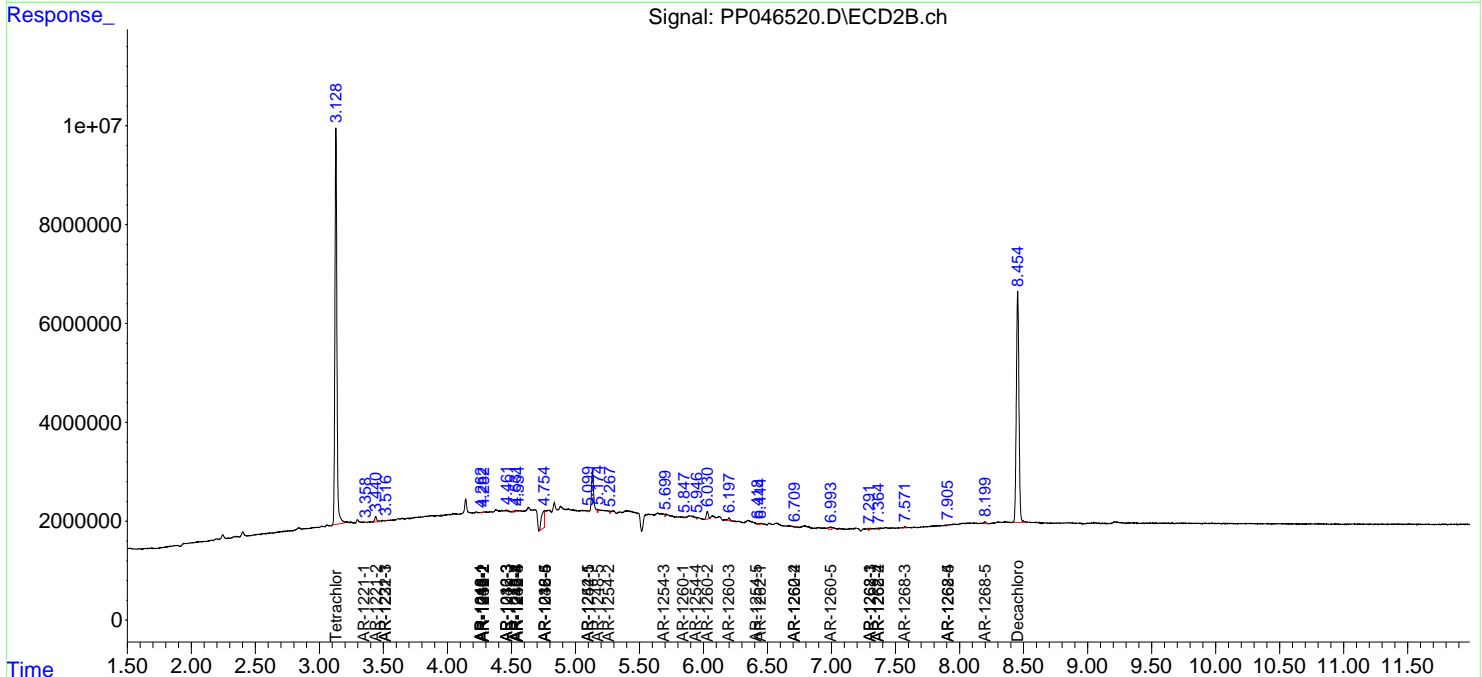
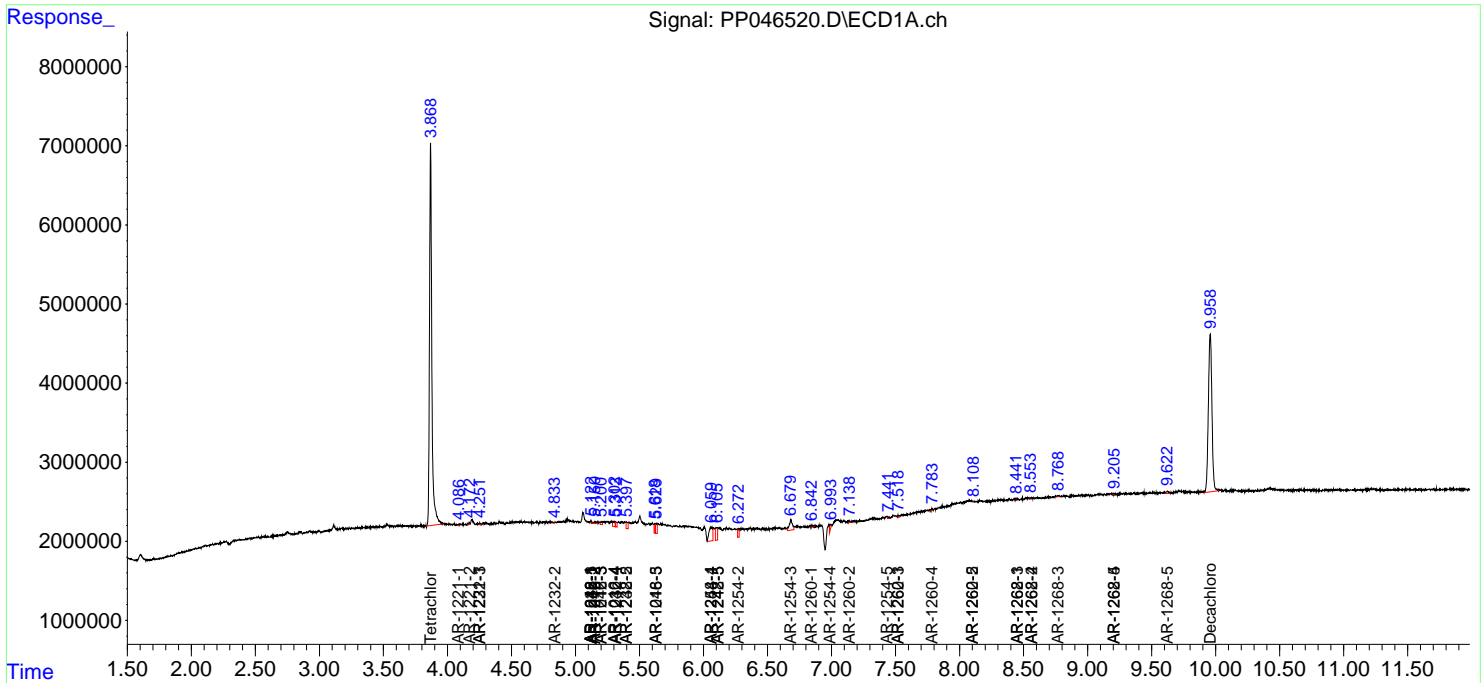
(f)=RT Delta > 1/2 Window (#)=Amounts differ by > 25% (m)=manual int.

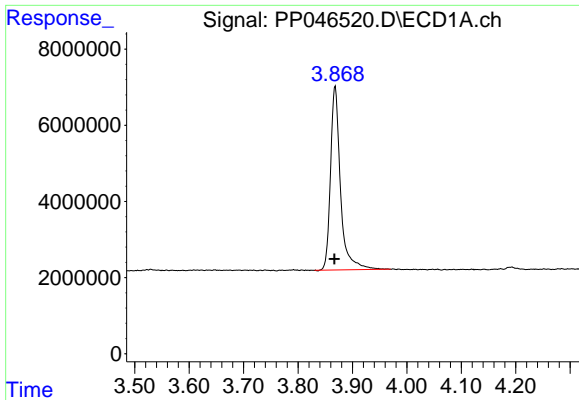
Data Path : Z:\pestpcbsrv\HPCHEM1\ECD_P\Data\PP042222\
 Data File : PP046520.D
 Signal(s) : Signal #1: ECD1A.ch Signal #2: ECD2B.ch
 Acq On : 24 Apr 2022 01:17
 Operator : YP\AJ
 Sample : I.BLK
 Misc :
 ALS Vial : 2 Sample Multiplier: 1

Instrument :
 ECD_P
 ClientSampleId :
 1593

Integration File signal 1: autoint1.e
 Integration File signal 2: autoint2.e
 Quant Time: Apr 24 21:11:09 2022
 Quant Method : Z:\pestpcbsrv\HPCHEM1\ECD_P\methods\PP042222.M
 Quant Title : GC EXTRACTABLES
 QLast Update : Fri Apr 22 19:00:06 2022
 Response via : Initial Calibration
 Integrator: ChemStation

Volume Inj. : 2 µl
 Signal #1 Phase : ZB-MR1 Signal #2 Phase: ZB-MR2
 Signal #1 Info : 30Mx0.32mmx 0.50µ Signal #2 Info : 30M x 0.32mm x 0.25µm

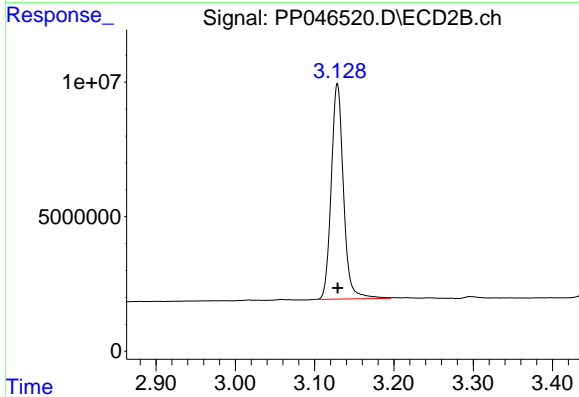




#1 Tetrachloro-m-xylene

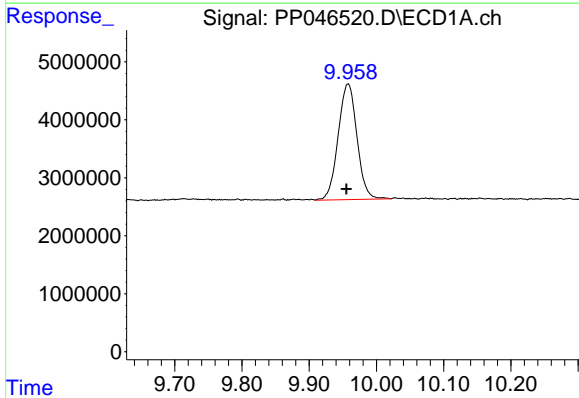
R.T.: 3.868 min
 Delta R.T.: 0.001 min
 Response: 61683753
 Conc: 25.55 ng/ml

Instrument :
 ECD_P
 ClientSampleId :
 1593



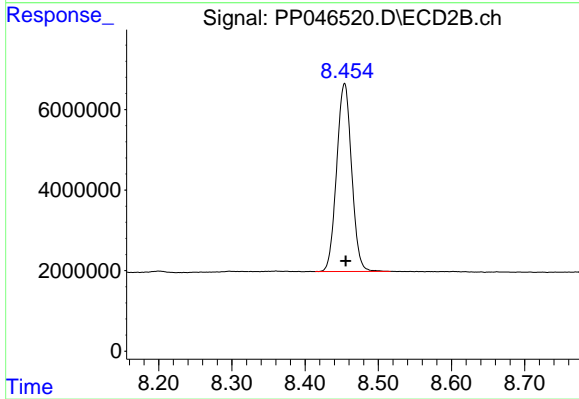
#1 Tetrachloro-m-xylene

R.T.: 3.129 min
 Delta R.T.: 0.000 min
 Response: 86117707
 Conc: 26.25 ng/ml



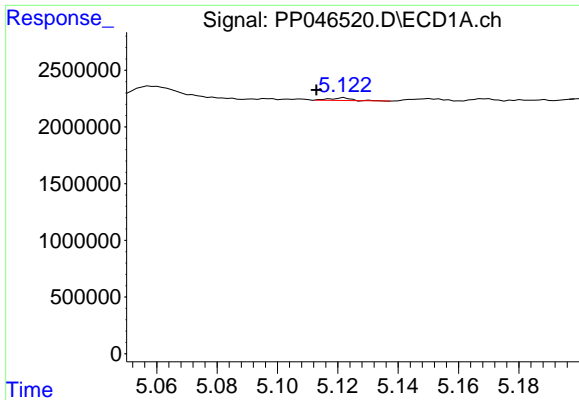
#2 Decachlorobiphenyl

R.T.: 9.958 min
 Delta R.T.: 0.003 min
 Response: 38625956
 Conc: 26.25 ng/ml



#2 Decachlorobiphenyl

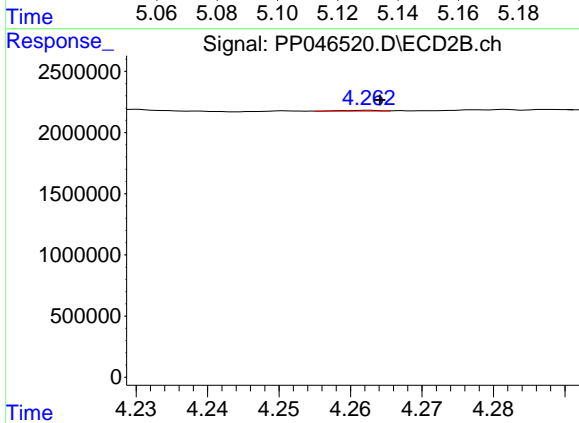
R.T.: 8.454 min
 Delta R.T.: -0.002 min
 Response: 66458759
 Conc: 27.86 ng/ml



#3 AR-1016-1

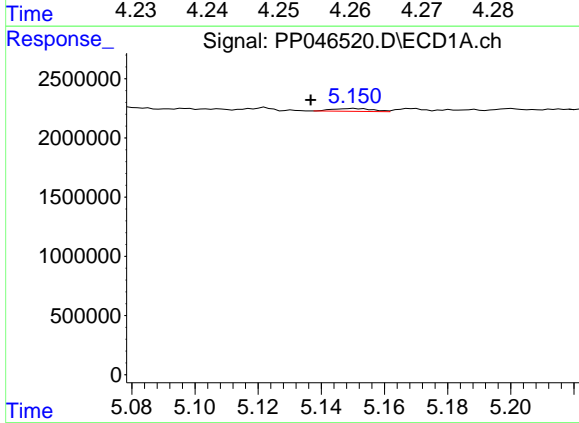
R.T.: 5.122 min
 Delta R.T.: 0.009 min
 Response: 116037
 Conc: 1.54 ng/ml

Instrument :
 ECD_P
 ClientSampleId :
 1593



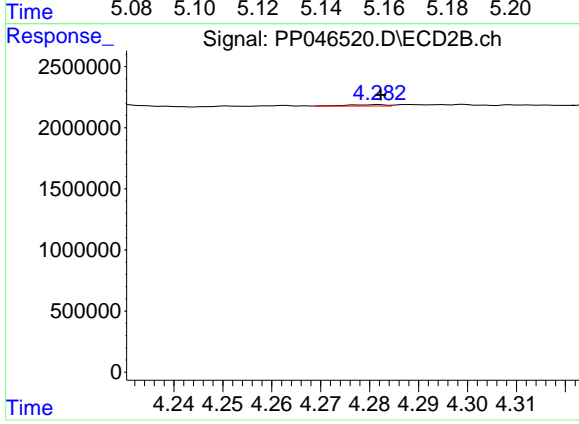
#3 AR-1016-1

R.T.: 4.263 min
 Delta R.T.: -0.002 min
 Response: 20221
 Conc: 0.18 ng/ml



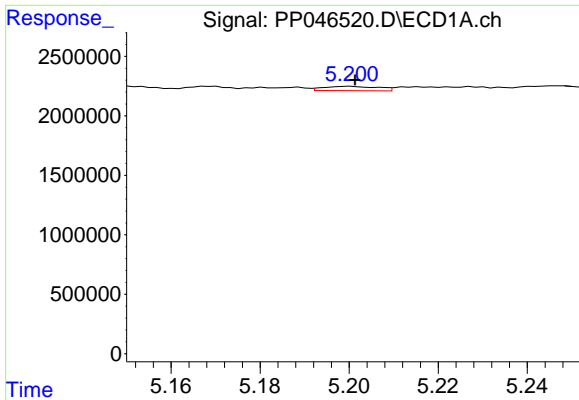
#4 AR-1016-2

R.T.: 5.150 min
 Delta R.T.: 0.014 min
 Response: 207125
 Conc: 1.82 ng/ml



#4 AR-1016-2

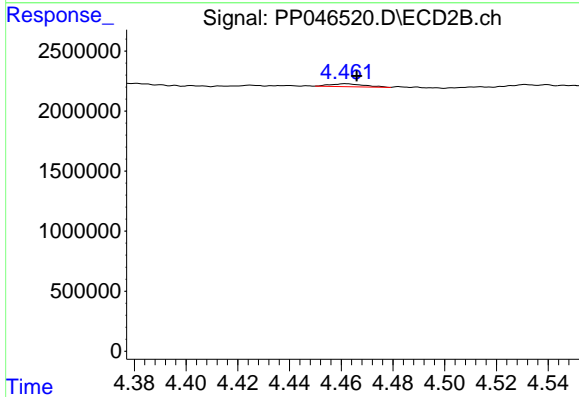
R.T.: 4.282 min
 Delta R.T.: 0.000 min
 Response: 59580
 Conc: 0.35 ng/ml



#5 AR-1016-3

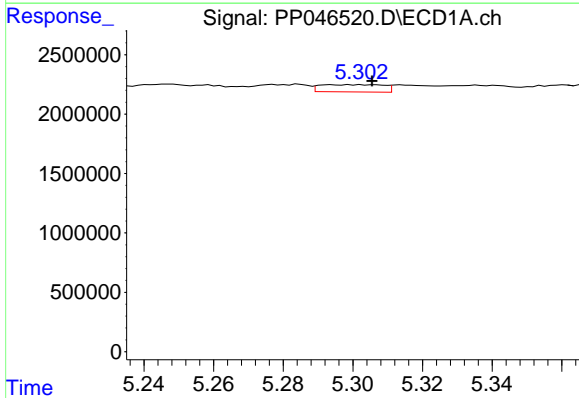
R.T.: 5.200 min
 Delta R.T.: -0.001 min
 Response: 308232
 Conc: 4.31 ng/ml

Instrument :
 ECD_P
 ClientSampleId :
 1593



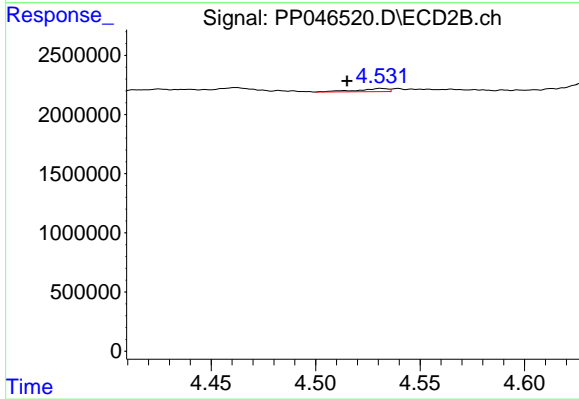
#5 AR-1016-3

R.T.: 4.462 min
 Delta R.T.: -0.004 min
 Response: 218139
 Conc: 2.49 ng/ml



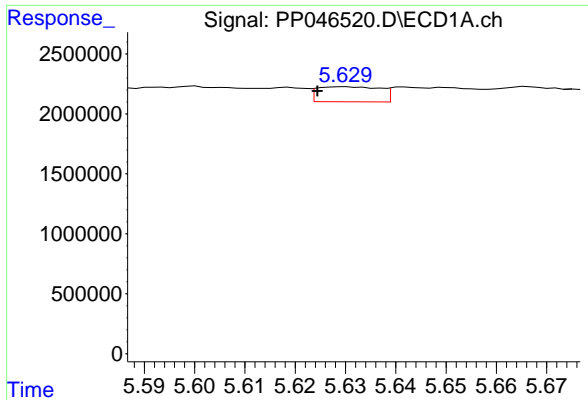
#6 AR-1016-4

R.T.: 5.299 min
 Delta R.T.: -0.006 min
 Response: 776917
 Conc: 12.92 ng/ml



#6 AR-1016-4

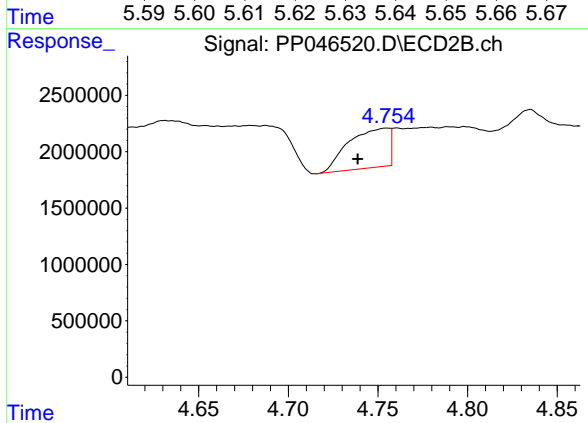
R.T.: 4.531 min
 Delta R.T.: 0.016 min
 Response: 271947
 Conc: 3.91 ng/ml



#7 AR-1016-5

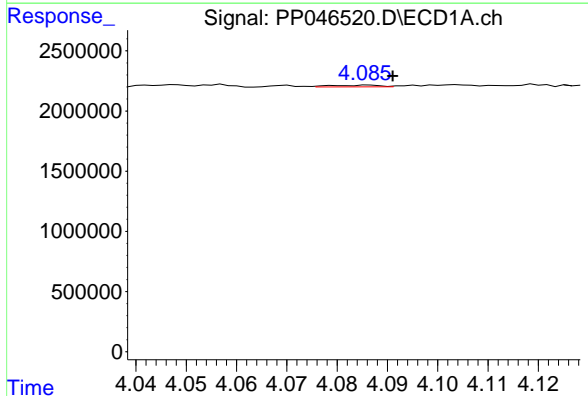
R.T.: 5.630 min
 Delta R.T.: 0.005 min
 Response: 1087747
 Conc: 20.54 ng/ml

Instrument : ECD_P
 ClientSampleId : 1593



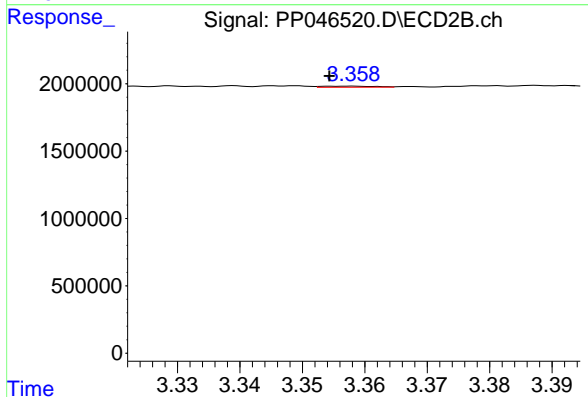
#7 AR-1016-5

R.T.: 4.755 min
 Delta R.T.: 0.016 min
 Response: 5486113
 Conc: 64.50 ng/ml



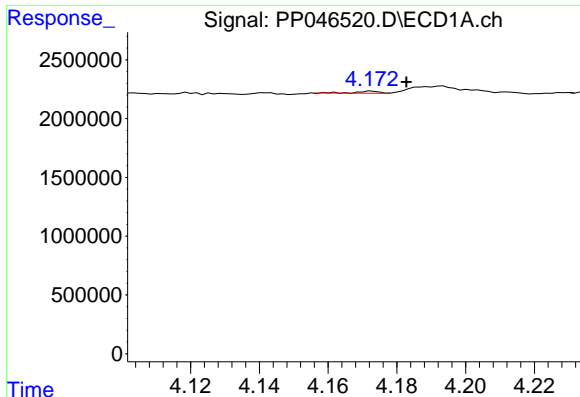
#8 AR-1221-1

R.T.: 4.087 min
 Delta R.T.: -0.005 min
 Response: 99130
 Conc: 3.59 ng/ml



#8 AR-1221-1

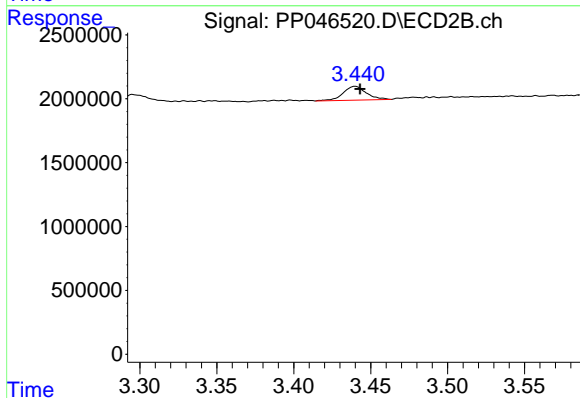
R.T.: 3.358 min
 Delta R.T.: 0.004 min
 Response: 48772
 Conc: 1.10 ng/ml



#9 AR-1221-2

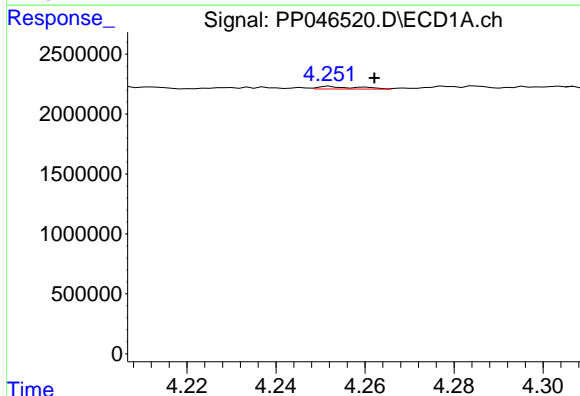
R.T.: 4.173 min
 Delta R.T.: -0.010 min
 Response: 71425
 Conc: 3.52 ng/ml

Instrument :
 ECD_P
 ClientSampleId :
 1593



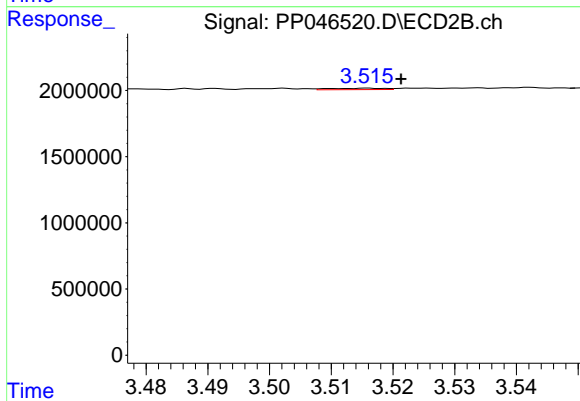
#9 AR-1221-2

R.T.: 3.440 min
 Delta R.T.: -0.003 min
 Response: 1138547
 Conc: 33.71 ng/ml



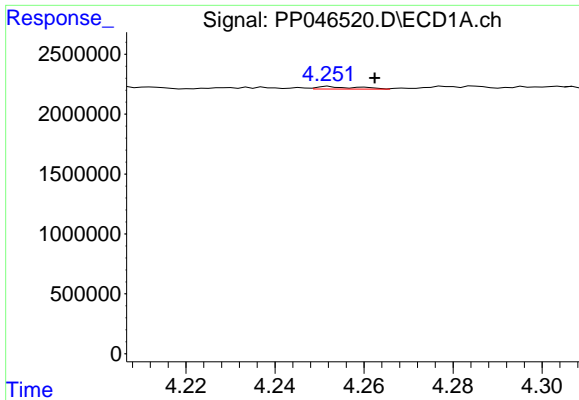
#10 AR-1221-3

R.T.: 4.252 min
 Delta R.T.: -0.010 min
 Response: 130686
 Conc: 2.00 ng/ml



#10 AR-1221-3

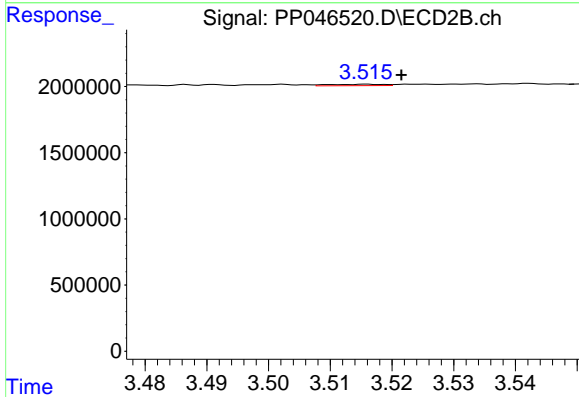
R.T.: 3.516 min
 Delta R.T.: -0.005 min
 Response: 65819
 Conc: 0.66 ng/ml



#11 AR-1232-1

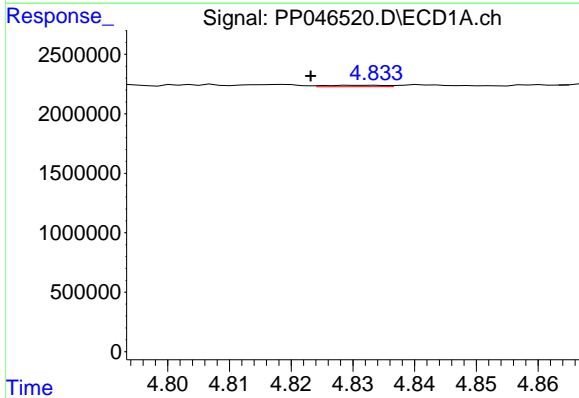
R.T.: 4.252 min
 Delta R.T.: -0.010 min
 Response: 130686
 Conc: 2.67 ng/ml

Instrument :
 ECD_P
 ClientSampleId :
 1593



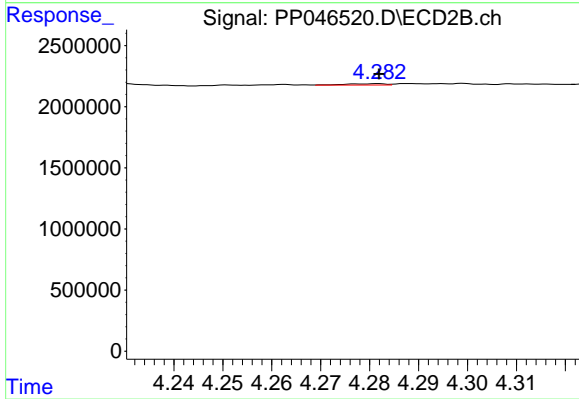
#11 AR-1232-1

R.T.: 3.516 min
 Delta R.T.: -0.006 min
 Response: 65819
 Conc: 0.87 ng/ml



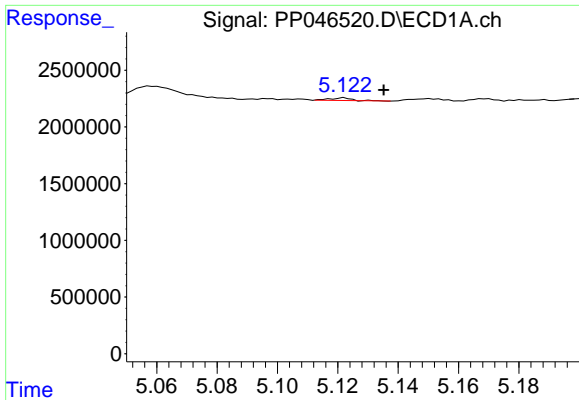
#12 AR-1232-2

R.T.: 4.834 min
 Delta R.T.: 0.010 min
 Response: 81409
 Conc: 3.35 ng/ml



#12 AR-1232-2

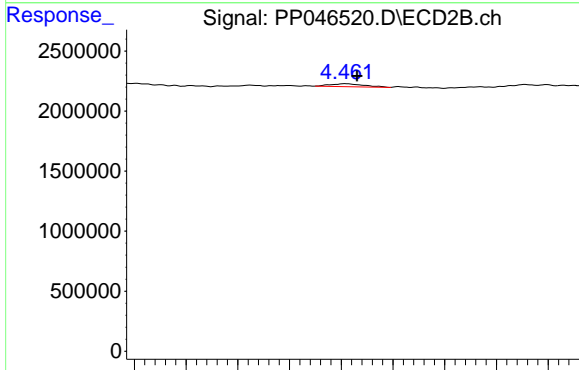
R.T.: 4.282 min
 Delta R.T.: 0.000 min
 Response: 59580
 Conc: 0.83 ng/ml



#13 AR-1232-3

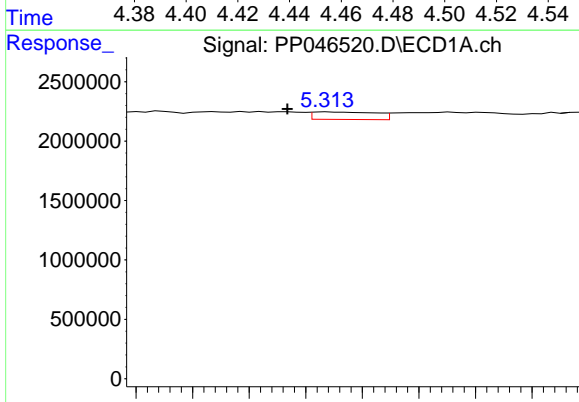
R.T.: 5.122 min
 Delta R.T.: -0.013 min
 Response: 116037
 Conc: 2.46 ng/ml

Instrument :
 ECD_P
 ClientSampleId :
 1593



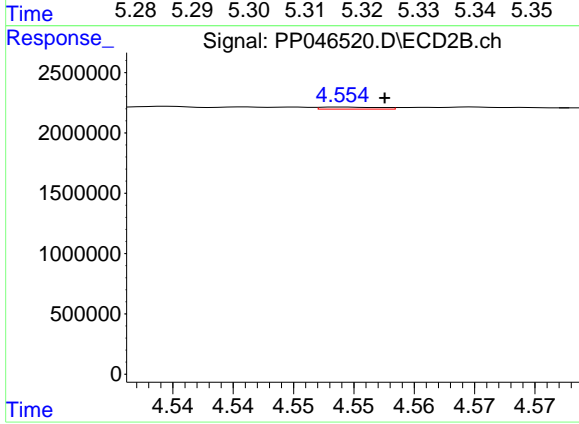
#13 AR-1232-3

R.T.: 4.462 min
 Delta R.T.: -0.004 min
 Response: 218139
 Conc: 5.99 ng/ml



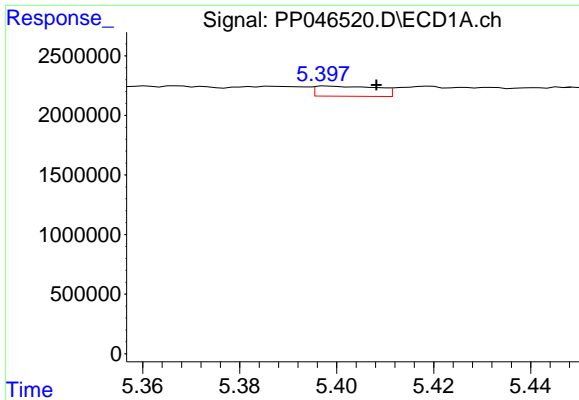
#14 AR-1232-4

R.T.: 5.314 min
 Delta R.T.: 0.007 min
 Response: 492848
 Conc: 20.25 ng/ml



#14 AR-1232-4

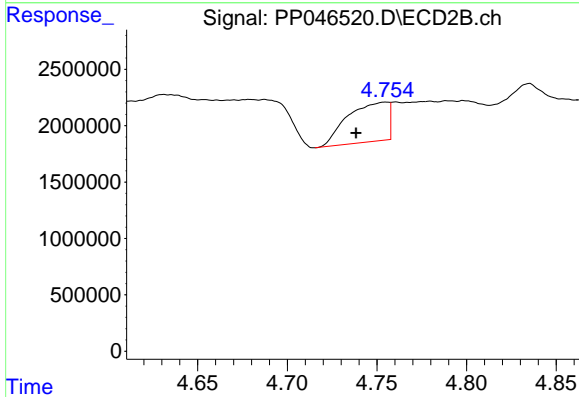
R.T.: 4.554 min
 Delta R.T.: -0.003 min
 Response: 58318
 Conc: 1.83 ng/ml



#15 AR-1232-5

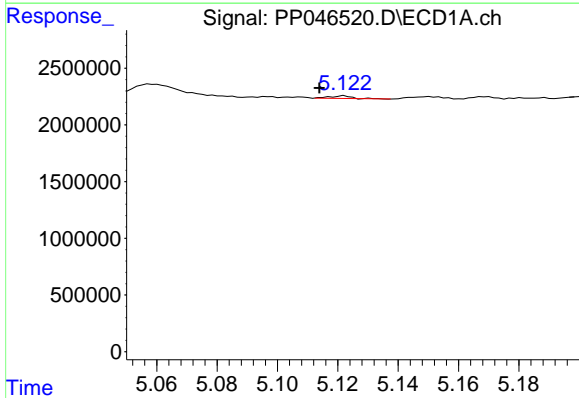
R.T.: 5.398 min
 Delta R.T.: -0.010 min
 Response: 760603
 Conc: 45.71 ng/ml

Instrument :
 ECD_P
 ClientSampleId :
 1593



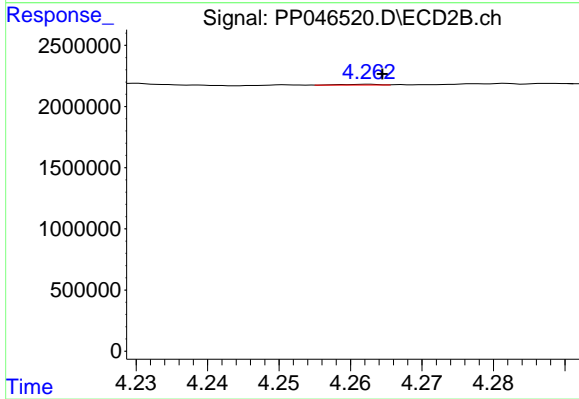
#15 AR-1232-5

R.T.: 4.755 min
 Delta R.T.: 0.016 min
 Response: 5486113
 Conc: 190.45 ng/ml



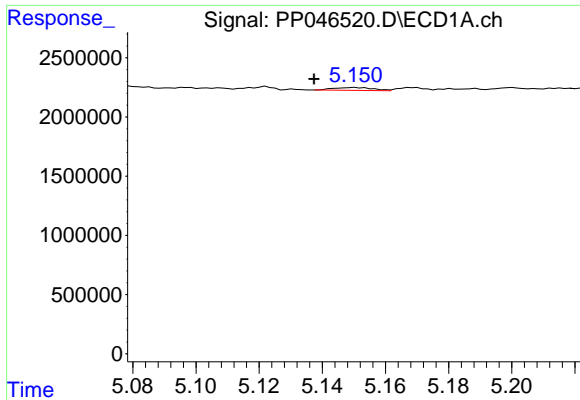
#16 AR-1242-1

R.T.: 5.122 min
 Delta R.T.: 0.008 min
 Response: 116037
 Conc: 1.83 ng/ml



#16 AR-1242-1

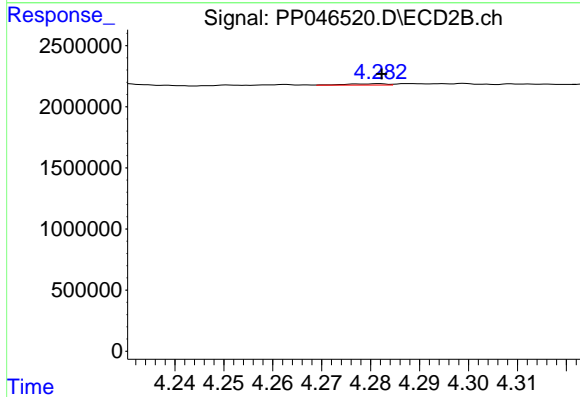
R.T.: 4.263 min
 Delta R.T.: -0.002 min
 Response: 20221
 Conc: 0.21 ng/ml



#17 AR-1242-2

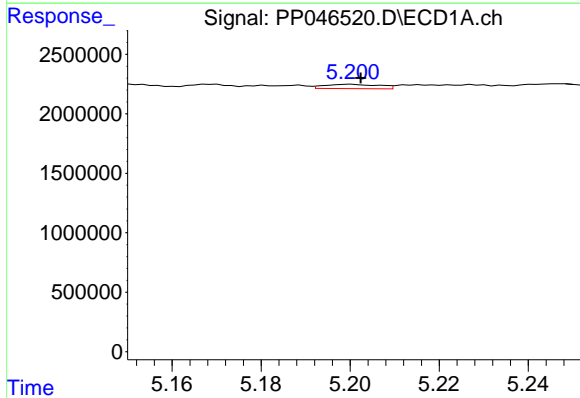
R.T.: 5.150 min
 Delta R.T.: 0.013 min
 Response: 207125
 Conc: 2.17 ng/ml

Instrument :
 ECD_P
 ClientSampleId :
 1593



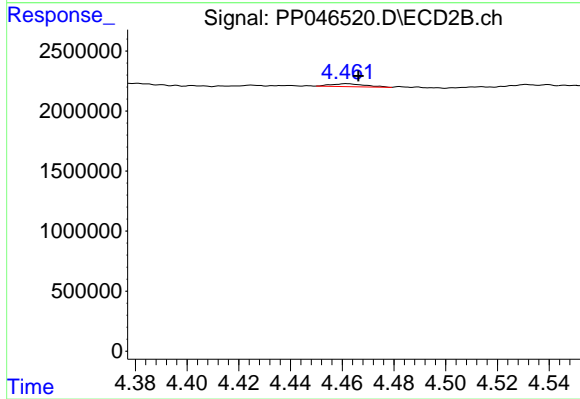
#17 AR-1242-2

R.T.: 4.282 min
 Delta R.T.: 0.000 min
 Response: 59580
 Conc: 0.41 ng/ml



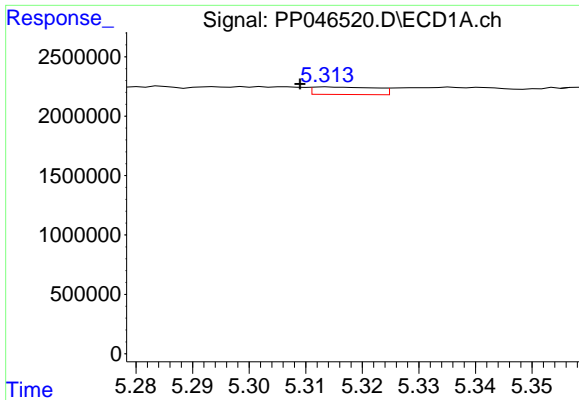
#18 AR-1242-3

R.T.: 5.200 min
 Delta R.T.: -0.002 min
 Response: 308232
 Conc: 5.15 ng/ml



#18 AR-1242-3

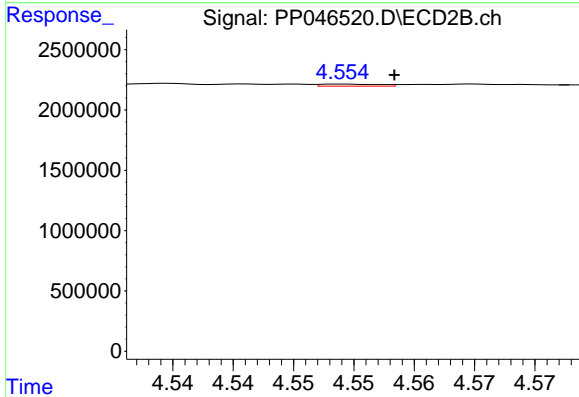
R.T.: 4.462 min
 Delta R.T.: -0.005 min
 Response: 218139
 Conc: 2.94 ng/ml



#19 AR-1242-4

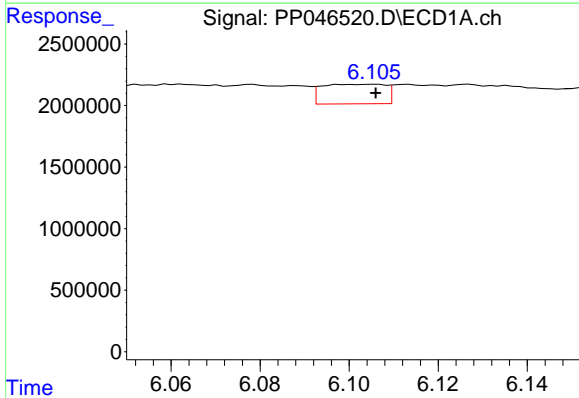
R.T.: 5.314 min
 Delta R.T.: 0.005 min
 Response: 492848
 Conc: 9.74 ng/ml

Instrument :
 ECD_P
 ClientSampleId :
 1593



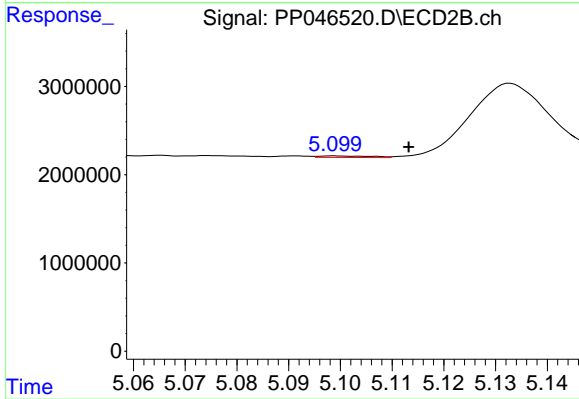
#19 AR-1242-4

R.T.: 4.554 min
 Delta R.T.: -0.004 min
 Response: 58318
 Conc: 0.82 ng/ml



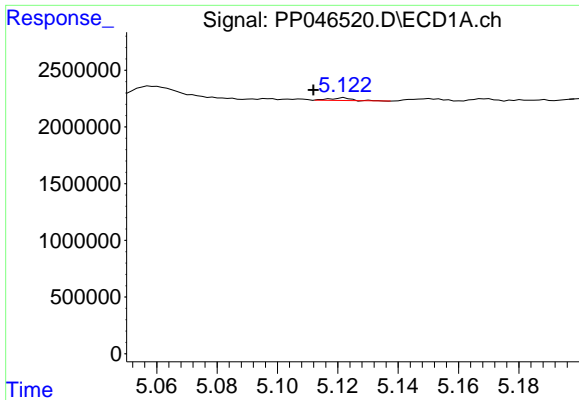
#20 AR-1242-5

R.T.: 6.105 min
 Delta R.T.: 0.000 min
 Response: 1573803
 Conc: 31.23 ng/ml



#20 AR-1242-5

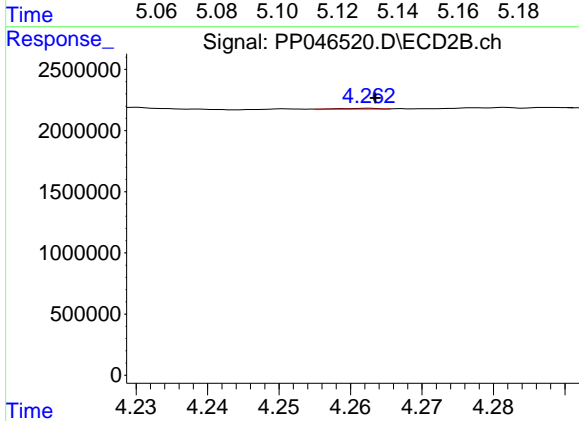
R.T.: 5.099 min
 Delta R.T.: -0.014 min
 Response: 123816
 Conc: 1.28 ng/ml



#21 AR-1248-1

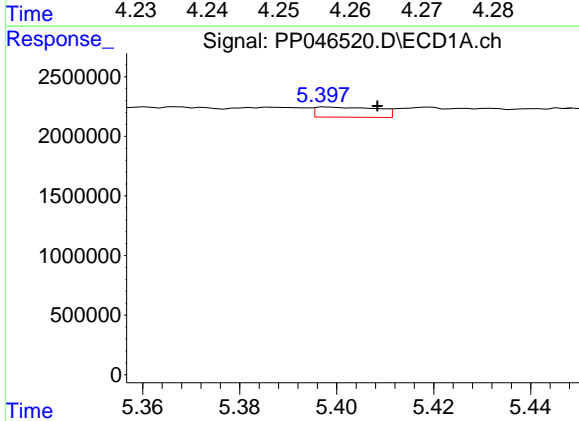
R.T.: 5.122 min
 Delta R.T.: 0.010 min
 Response: 116037
 Conc: 2.78 ng/ml

Instrument :
 ECD_P
 ClientSampleId :
 1593



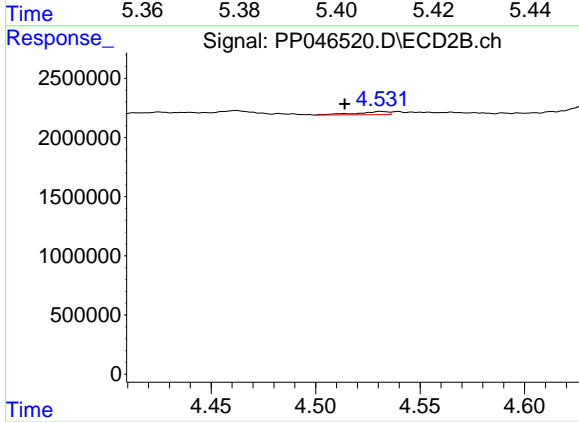
#21 AR-1248-1

R.T.: 4.263 min
 Delta R.T.: 0.000 min
 Response: 20221
 Conc: 0.29 ng/ml



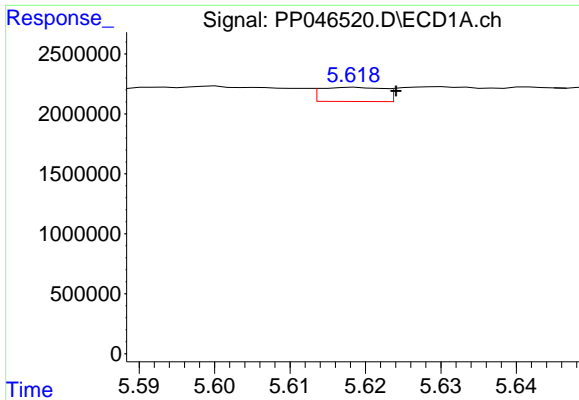
#22 AR-1248-2

R.T.: 5.398 min
 Delta R.T.: -0.010 min
 Response: 760603
 Conc: 12.87 ng/ml



#22 AR-1248-2

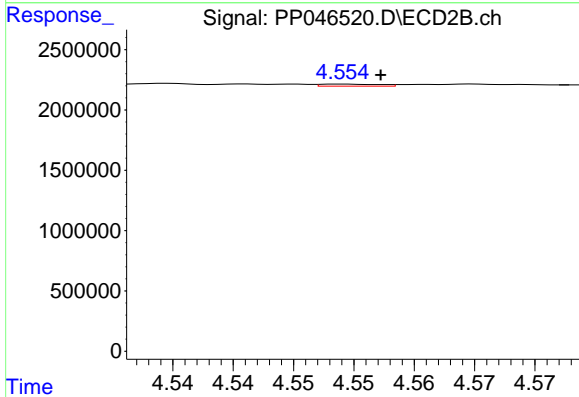
R.T.: 4.531 min
 Delta R.T.: 0.017 min
 Response: 271947
 Conc: 2.91 ng/ml



#23 AR-1248-3

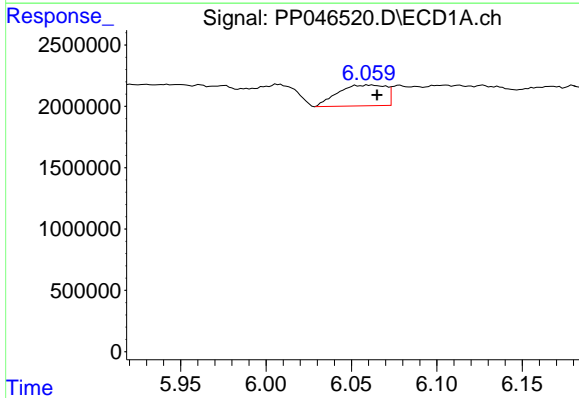
R.T.: 5.619 min
 Delta R.T.: -0.005 min
 Response: 682595
 Conc: 9.77 ng/ml

Instrument :
 ECD_P
 ClientSampleId :
 1593



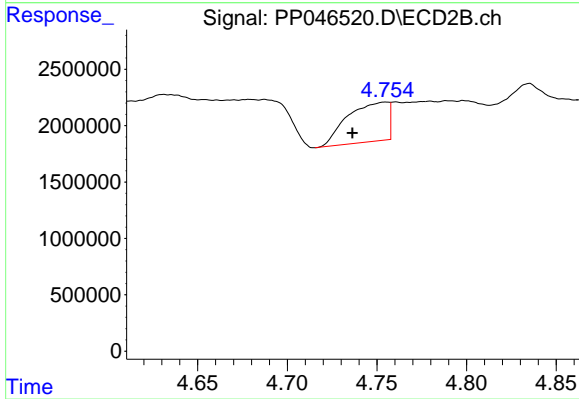
#23 AR-1248-3

R.T.: 4.554 min
 Delta R.T.: -0.003 min
 Response: 58318
 Conc: 0.60 ng/ml



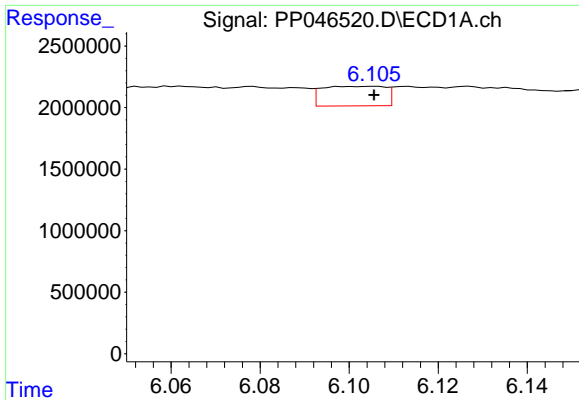
#24 AR-1248-4

R.T.: 6.062 min
 Delta R.T.: -0.003 min
 Response: 3296623
 Conc: 42.99 ng/ml



#24 AR-1248-4

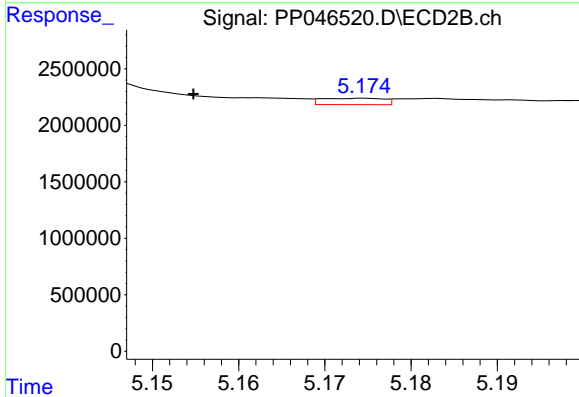
R.T.: 4.755 min
 Delta R.T.: 0.018 min
 Response: 5486113
 Conc: 46.60 ng/ml



#25 AR-1248-5

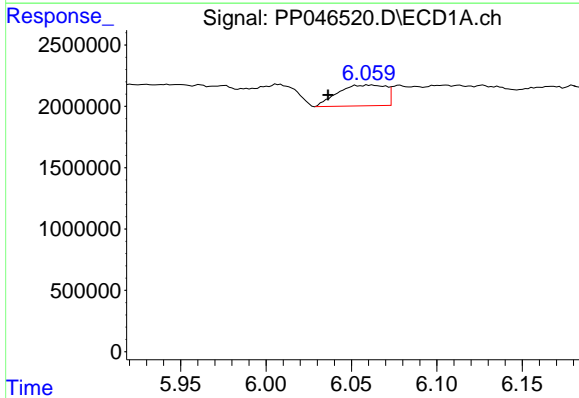
R.T.: 6.105 min
 Delta R.T.: 0.000 min
 Response: 1573803
 Conc: 20.23 ng/ml

Instrument :
 ECD_P
 ClientSampleId :
 1593



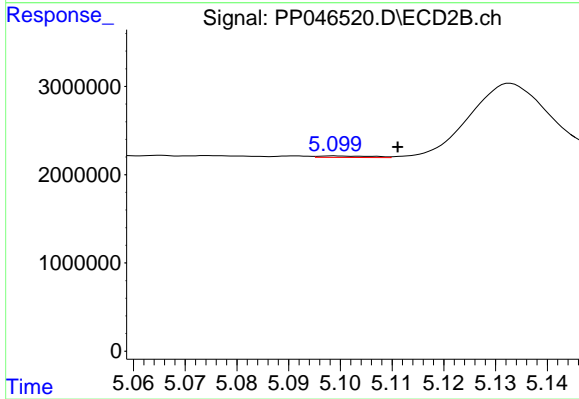
#25 AR-1248-5

R.T.: 5.175 min
 Delta R.T.: 0.020 min
 Response: 281084
 Conc: 2.31 ng/ml



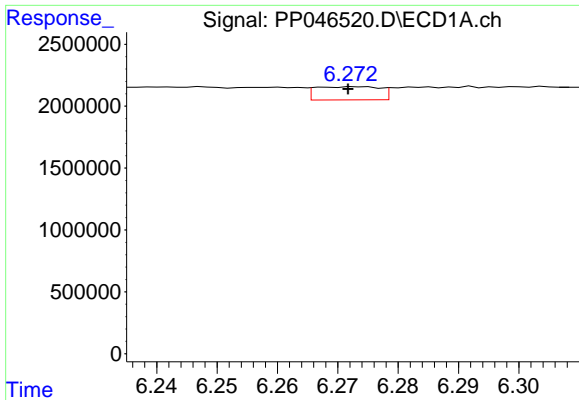
#26 AR-1254-1

R.T.: 6.062 min
 Delta R.T.: 0.025 min
 Response: 3296623
 Conc: 56.75 ng/ml



#26 AR-1254-1

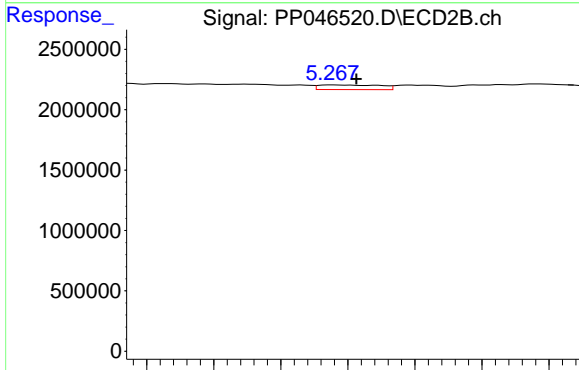
R.T.: 5.099 min
 Delta R.T.: -0.012 min
 Response: 123816
 Conc: 0.64 ng/ml



#27 AR-1254-2

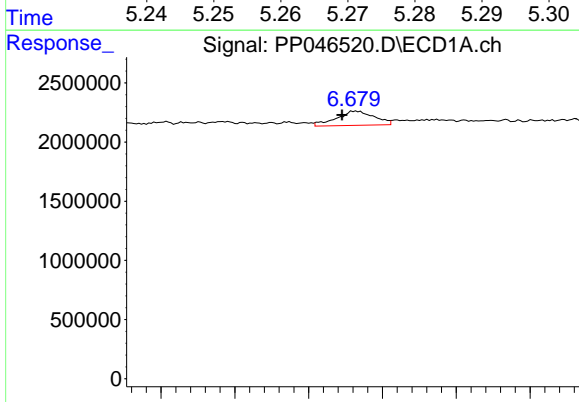
R.T.: 6.274 min
 Delta R.T.: 0.002 min
 Response: 787251
 Conc: 6.39 ng/ml

Instrument :
 ECD_P
 ClientSampleId :
 1593



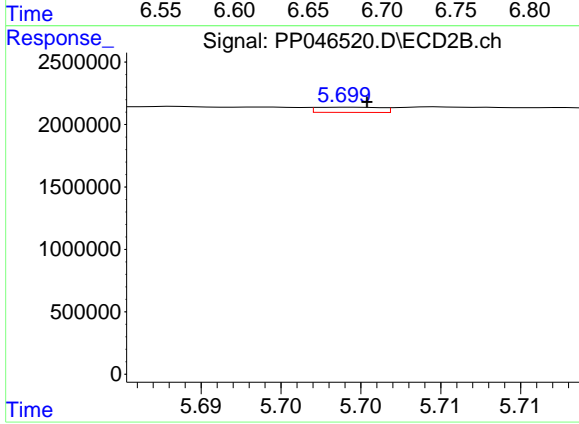
#27 AR-1254-2

R.T.: 5.268 min
 Delta R.T.: -0.003 min
 Response: 246135
 Conc: 1.48 ng/ml



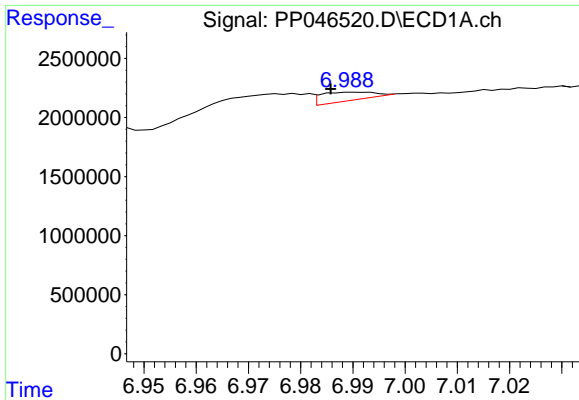
#28 AR-1254-3

R.T.: 6.682 min
 Delta R.T.: 0.009 min
 Response: 2144407
 Conc: 16.21 ng/ml



#28 AR-1254-3

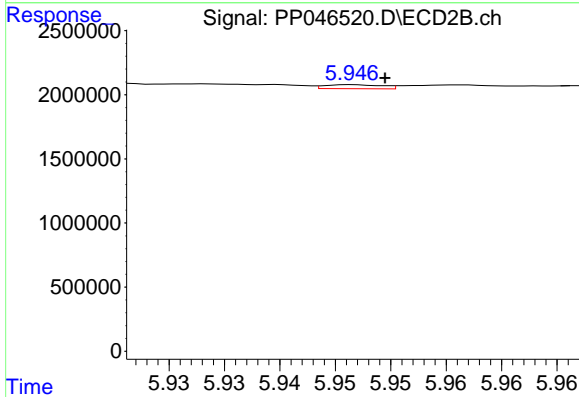
R.T.: 5.699 min
 Delta R.T.: -0.001 min
 Response: 115994
 Conc: 0.47 ng/ml



#29 AR-1254-4

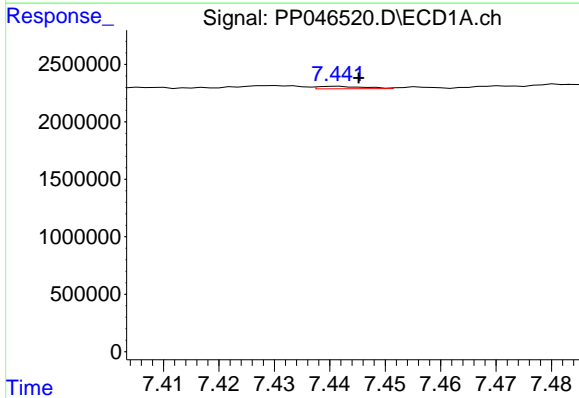
R.T.: 6.991 min
 Delta R.T.: 0.005 min
 Response: 507544
 Conc: 5.11 ng/ml

Instrument :
 ECD_P
 ClientSampleId :
 1593



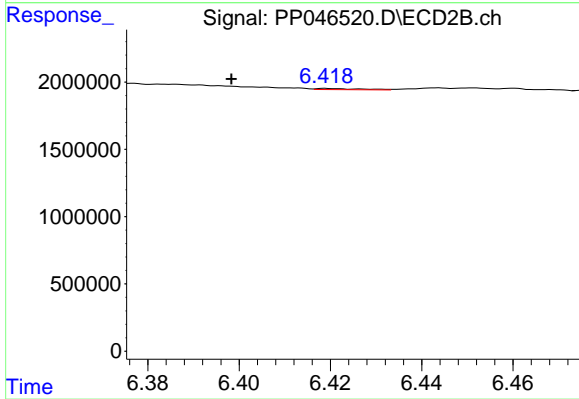
#29 AR-1254-4

R.T.: 5.947 min
 Delta R.T.: -0.003 min
 Response: 112155
 Conc: 0.65 ng/ml



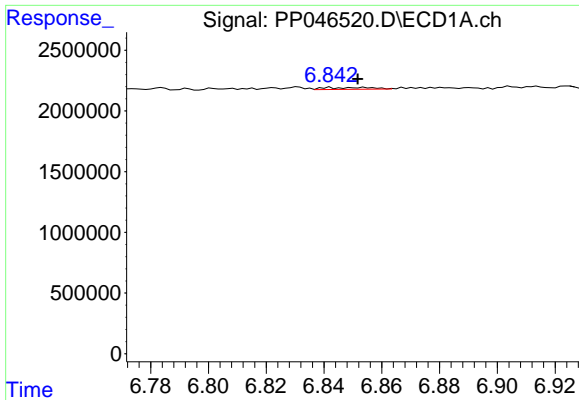
#30 AR-1254-5

R.T.: 7.441 min
 Delta R.T.: -0.004 min
 Response: 119194
 Conc: 1.36 ng/ml



#30 AR-1254-5

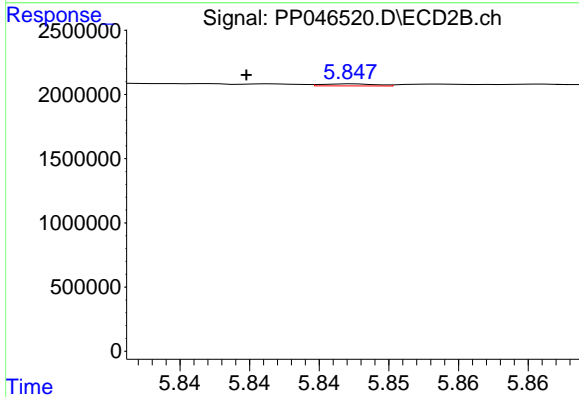
R.T.: 6.419 min
 Delta R.T.: 0.021 min
 Response: 55964
 Conc: 0.26 ng/ml



#31 AR-1260-1

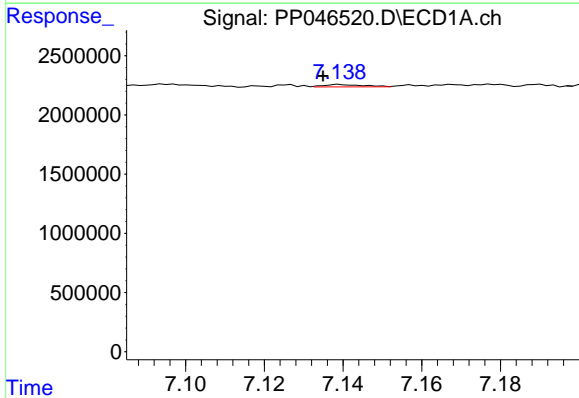
R.T.: 6.842 min
 Delta R.T.: -0.010 min
 Response: 178295
 Conc: 2.11 ng/ml

Instrument :
 ECD_P
 ClientSampleId :
 1593



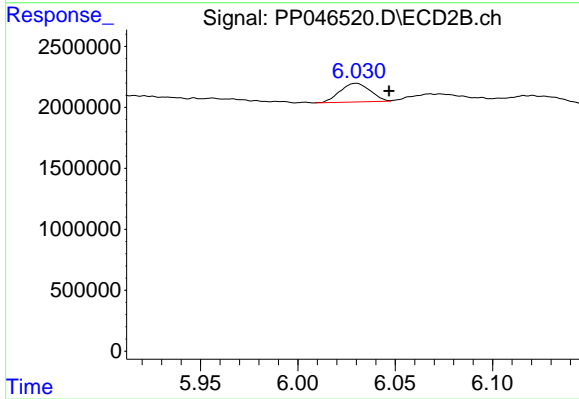
#31 AR-1260-1

R.T.: 5.847 min
 Delta R.T.: 0.008 min
 Response: 42336
 Conc: 0.27 ng/ml



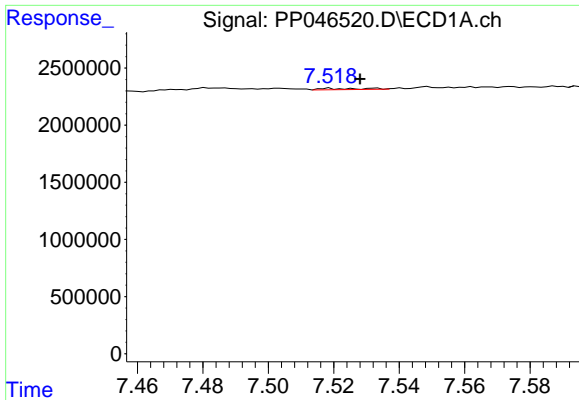
#32 AR-1260-2

R.T.: 7.139 min
 Delta R.T.: 0.004 min
 Response: 144508
 Conc: 1.44 ng/ml



#32 AR-1260-2

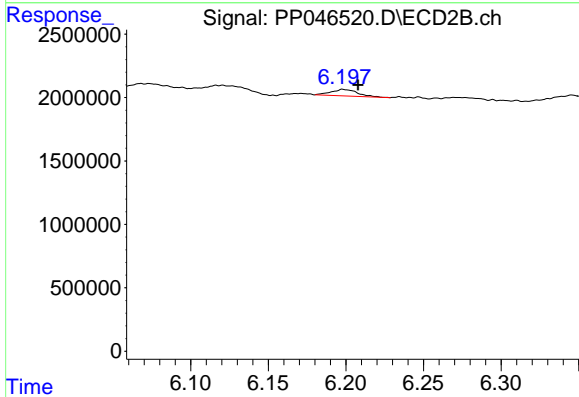
R.T.: 6.030 min
 Delta R.T.: -0.017 min
 Response: 1655988
 Conc: 8.14 ng/ml



#33 AR-1260-3

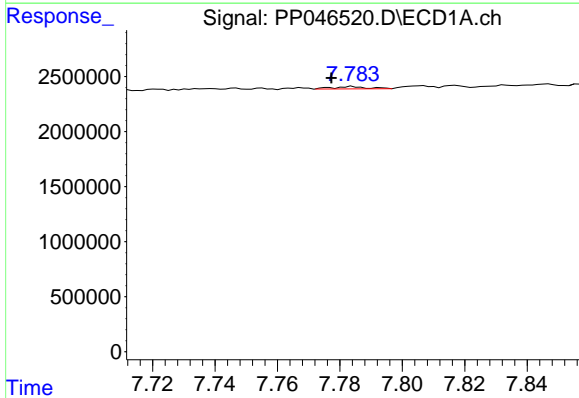
R.T.: 7.519 min
 Delta R.T.: -0.010 min
 Response: 107613
 Conc: 1.33 ng/ml

Instrument :
 ECD_P
 ClientSampleId :
 1593



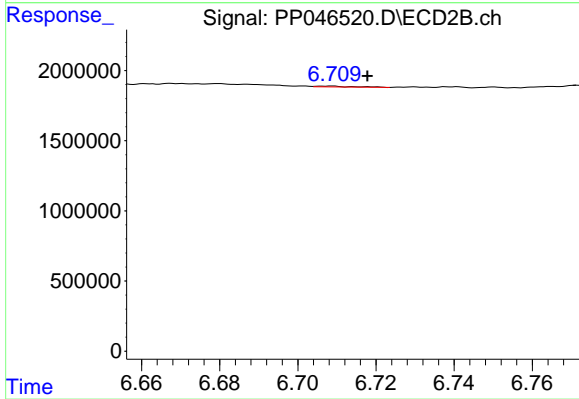
#33 AR-1260-3

R.T.: 6.198 min
 Delta R.T.: -0.010 min
 Response: 606618
 Conc: 3.55 ng/ml



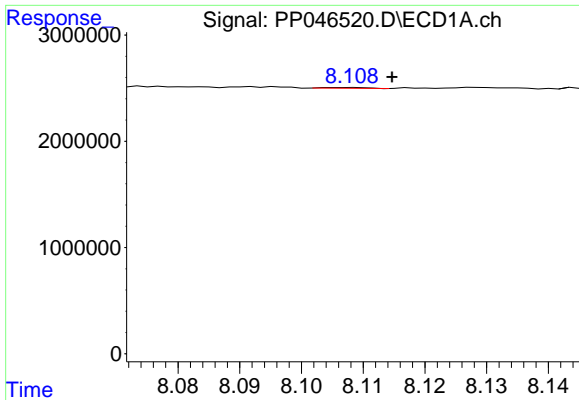
#34 AR-1260-4

R.T.: 7.784 min
 Delta R.T.: 0.007 min
 Response: 162652
 Conc: 2.04 ng/ml



#34 AR-1260-4

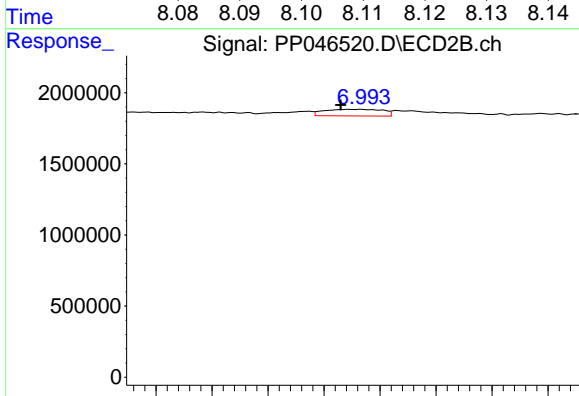
R.T.: 6.709 min
 Delta R.T.: -0.009 min
 Response: 42187
 Conc: 0.29 ng/ml



#35 AR-1260-5

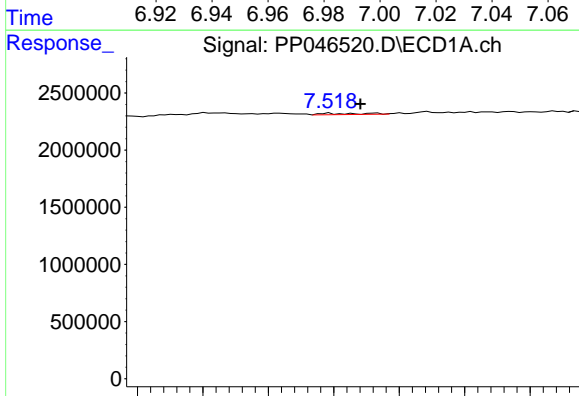
R.T.: 8.108 min
 Delta R.T.: -0.007 min
 Response: 37572
 Conc: 0.24 ng/ml

Instrument :
 ECD_P
 ClientSampleId :
 1593



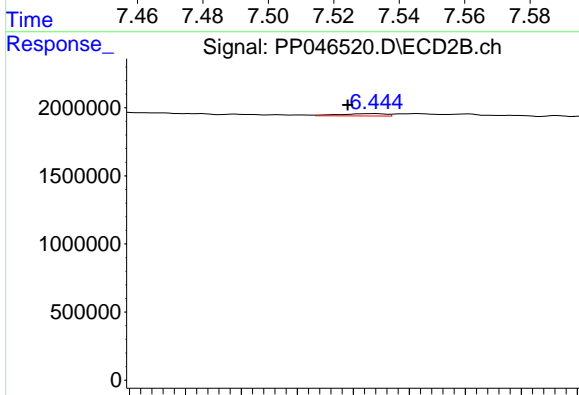
#35 AR-1260-5

R.T.: 6.993 min
 Delta R.T.: 0.007 min
 Response: 670598
 Conc: 1.91 ng/ml



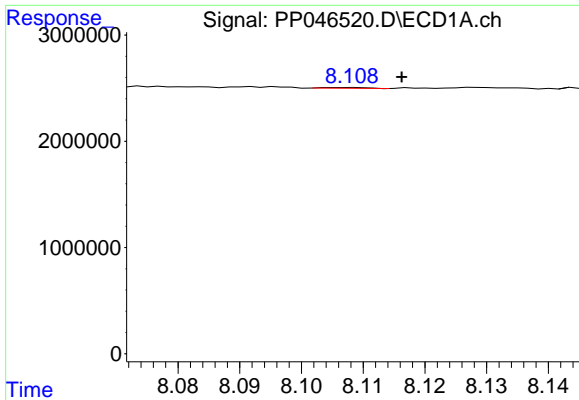
#36 AR-1262-1

R.T.: 7.519 min
 Delta R.T.: -0.010 min
 Response: 107613
 Conc: 0.89 ng/ml



#36 AR-1262-1

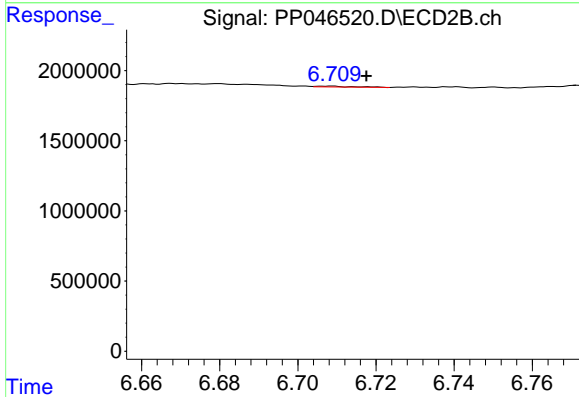
R.T.: 6.444 min
 Delta R.T.: 0.005 min
 Response: 97346
 Conc: 0.39 ng/ml



#37 AR-1262-2

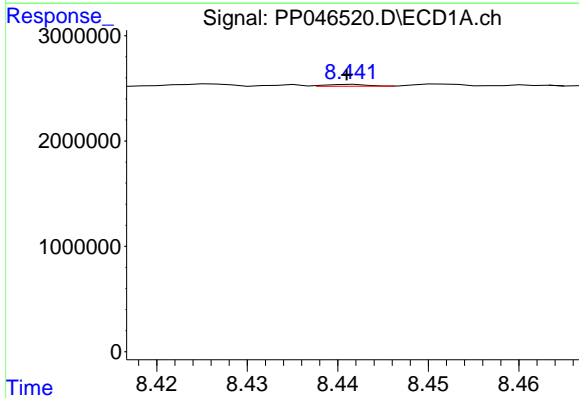
R.T.: 8.108 min
 Delta R.T.: -0.008 min
 Response: 37572
 Conc: 0.20 ng/ml

Instrument :
 ECD_P
 ClientSampleId :
 1593



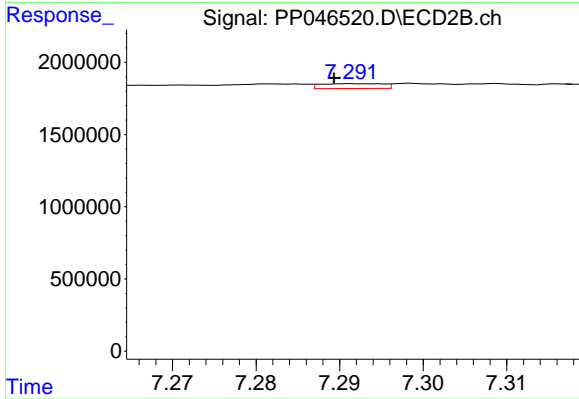
#37 AR-1262-2

R.T.: 6.709 min
 Delta R.T.: -0.009 min
 Response: 42187
 Conc: 0.22 ng/ml



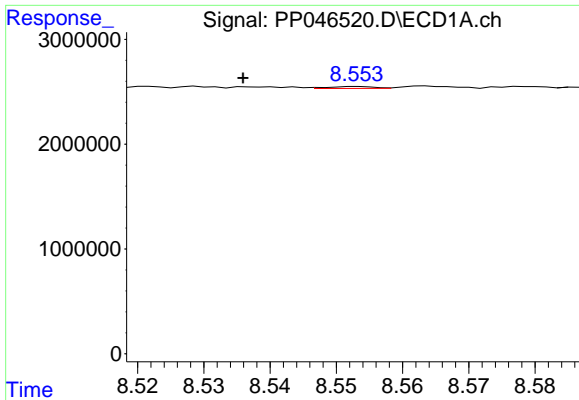
#38 AR-1262-3

R.T.: 8.442 min
 Delta R.T.: 0.000 min
 Response: 58185
 Conc: 0.43 ng/ml



#38 AR-1262-3

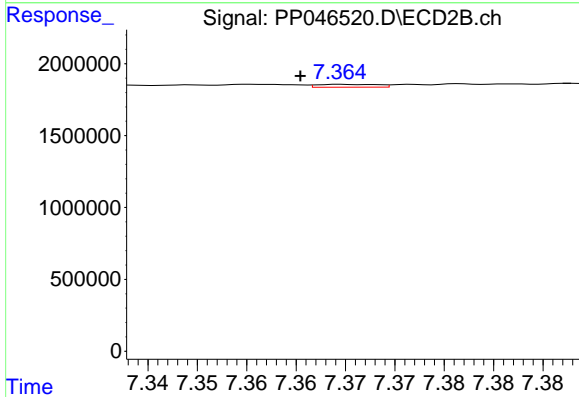
R.T.: 7.292 min
 Delta R.T.: 0.002 min
 Response: 176861
 Conc: 1.09 ng/ml



#39 AR-1262-4

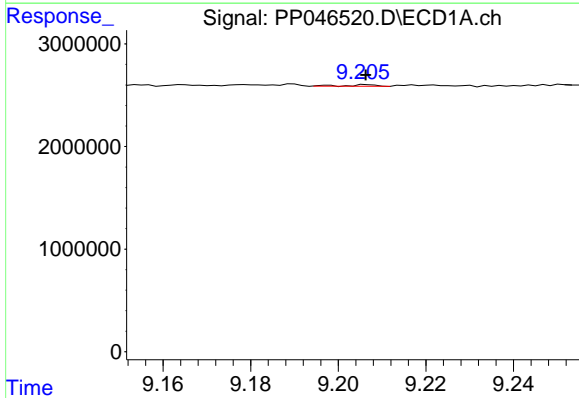
R.T.: 8.553 min
 Delta R.T.: 0.017 min
 Response: 87794
 Conc: 1.39 ng/ml

Instrument :
 ECD_P
 ClientSampleId :
 1593



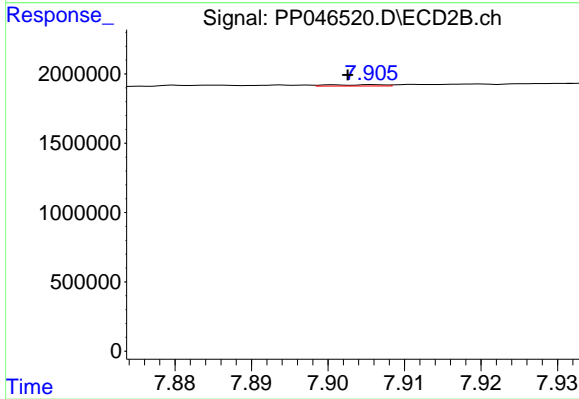
#39 AR-1262-4

R.T.: 7.365 min
 Delta R.T.: 0.004 min
 Response: 84744
 Conc: 0.30 ng/ml



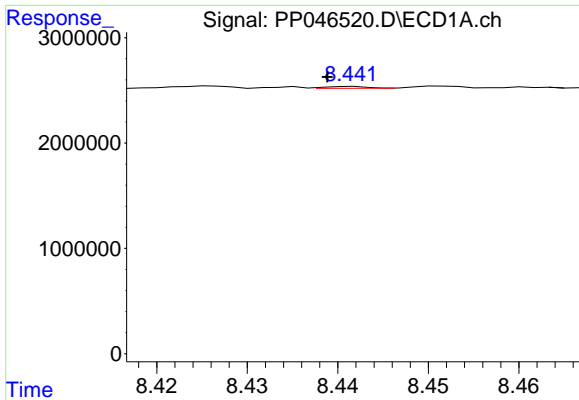
#40 AR-1262-5

R.T.: 9.207 min
 Delta R.T.: 0.000 min
 Response: 77709
 Conc: 1.13 ng/ml



#40 AR-1262-5

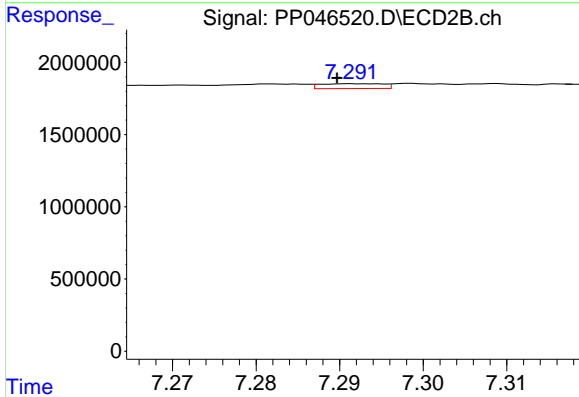
R.T.: 7.906 min
 Delta R.T.: 0.004 min
 Response: 48345
 Conc: 0.37 ng/ml



#41 AR-1268-1

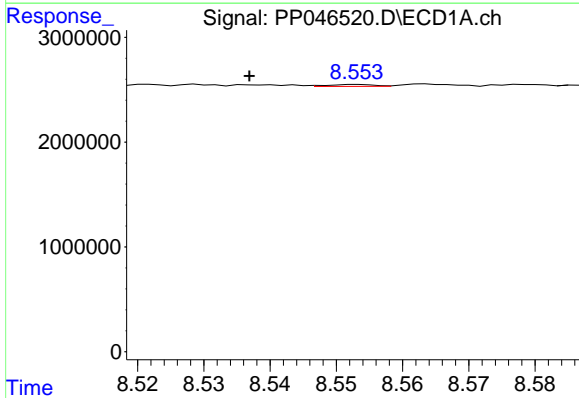
R.T.: 8.442 min
 Delta R.T.: 0.003 min
 Response: 58185
 Conc: 0.24 ng/ml

Instrument :
 ECD_P
 ClientSampleId :
 1593



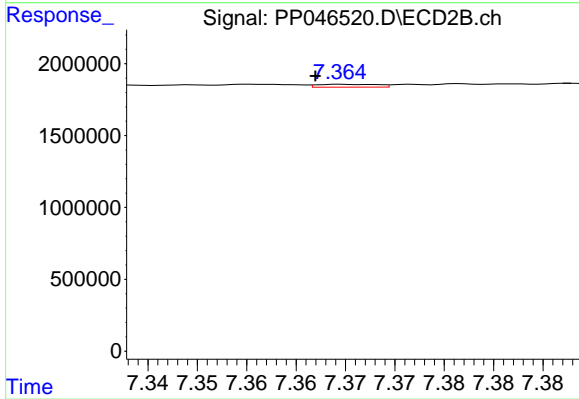
#41 AR-1268-1

R.T.: 7.292 min
 Delta R.T.: 0.002 min
 Response: 176861
 Conc: 0.37 ng/ml



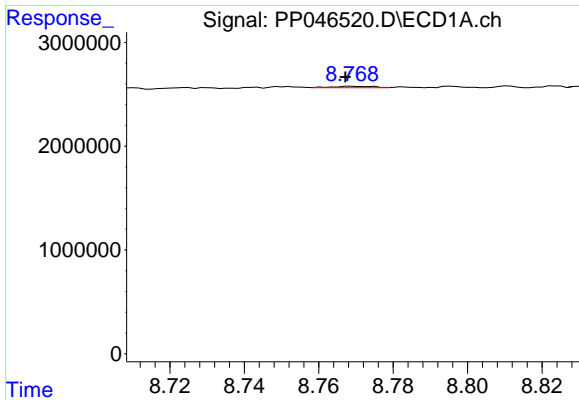
#42 AR-1268-2

R.T.: 8.553 min
 Delta R.T.: 0.016 min
 Response: 87794
 Conc: 0.40 ng/ml



#42 AR-1268-2

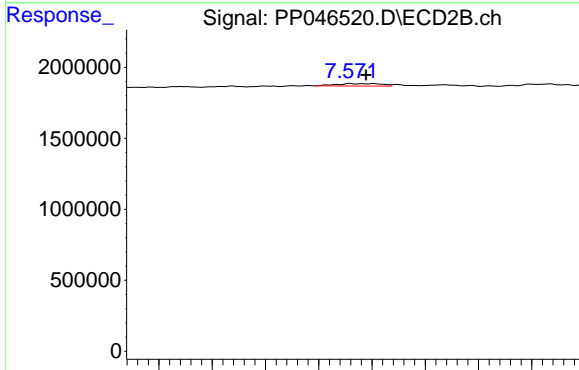
R.T.: 7.365 min
 Delta R.T.: 0.003 min
 Response: 84744
 Conc: 0.20 ng/ml



#43 AR-1268-3

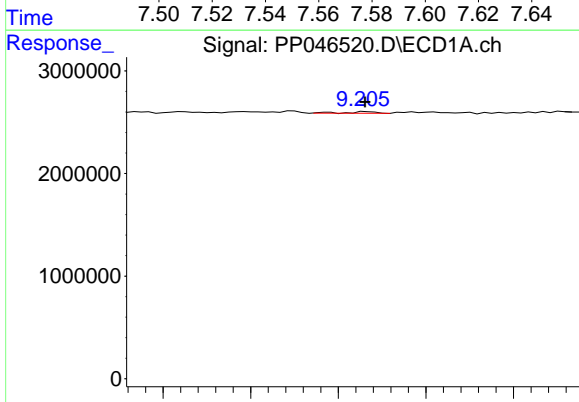
R.T.: 8.769 min
 Delta R.T.: 0.002 min
 Response: 105078
 Conc: 0.55 ng/ml

Instrument :
 ECD_P
 ClientSampleId :
 1593



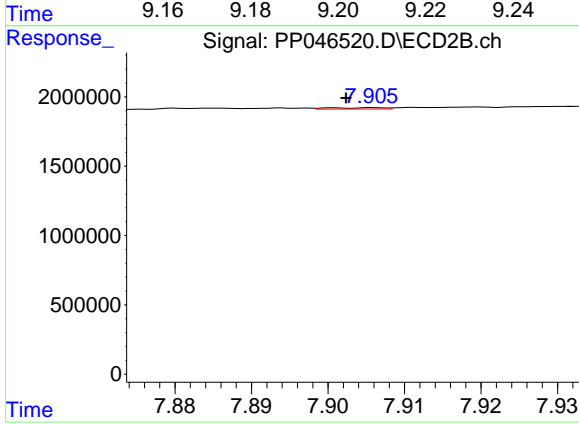
#43 AR-1268-3

R.T.: 7.572 min
 Delta R.T.: -0.006 min
 Response: 199973
 Conc: 0.57 ng/ml



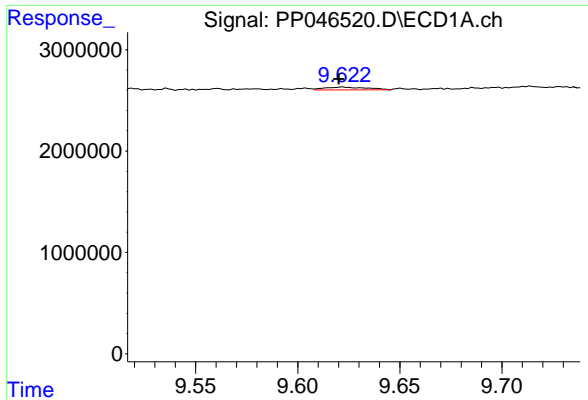
#44 AR-1268-4

R.T.: 9.207 min
 Delta R.T.: 0.000 min
 Response: 77709
 Conc: 1.01 ng/ml



#44 AR-1268-4

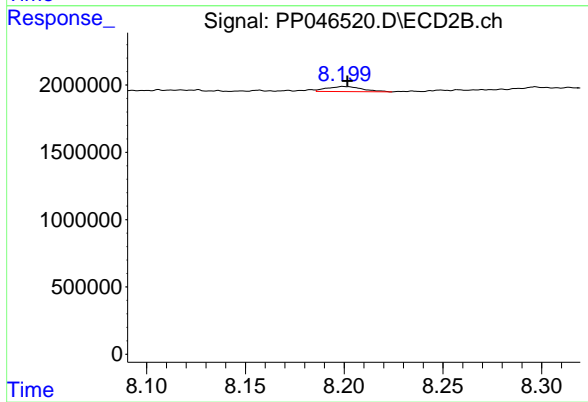
R.T.: 7.906 min
 Delta R.T.: 0.004 min
 Response: 48345
 Conc: 0.33 ng/ml



#45 AR-1268-5

R.T.: 9.622 min
 Delta R.T.: 0.002 min
 Response: 388724
 Conc: 0.69 ng/ml

Instrument :
 ECD_P
 ClientSampleId :
 1593



#45 AR-1268-5

R.T.: 8.199 min
 Delta R.T.: -0.002 min
 Response: 473341
 Conc: 0.46 ng/ml