

Data Path : Z:\pestpcbsrv\HPCHEM1\ECD_P\Data\PP042222\
 Data File : PP046539.D
 Signal(s) : Signal #1: ECD1A.ch Signal #2: ECD2B.ch
 Acq On : 24 Apr 2022 09:58
 Operator : YP\AJ
 Sample : N2493-01
 Misc :
 ALS Vial : 74 Sample Multiplier: 1

Instrument :
 ECD_P
 ClientSampleId :
 AR1254CCC500

Integration File signal 1: autoint1.e
 Integration File signal 2: autoint2.e
 Quant Time: Apr 24 21:19:14 2022
 Quant Method : Z:\pestpcbsrv\HPCHEM1\ECD_P\methods\PP042222.M
 Quant Title : GC EXTRACTABLES
 QLast Update : Fri Apr 22 19:00:06 2022
 Response via : Initial Calibration
 Integrator: ChemStation

Volume Inj. : 2 µl
 Signal #1 Phase : ZB-MR1 Signal #2 Phase: ZB-MR2
 Signal #1 Info : 30Mx0.32mmx 0.50µ Signal #2 Info : 30M x 0.32mm x 0.25µm

Compound	RT#1	RT#2	Resp#1	Resp#2	ng/ml	ng/ml
System Monitoring Compounds						
1) SA Tetrachlo...	3.865	3.130	52382871	80075120	21.700	24.410
2) SA Decachlor...	9.950	8.452	29194046	46894768	19.840	19.660
Target Compounds						
3) L1 AR-1016-1	5.118	4.257	329413	47238	4.375	0.411 #
4) L1 AR-1016-2	5.123	4.284	378158	456921	3.321	2.693
5) L1 AR-1016-3	5.203	4.466	272138	139016	3.807	1.588 #
6) L1 AR-1016-4	5.305	4.522	377410	486049	6.277	6.981
7) L1 AR-1016-5	5.621	4.738	194730	1365151	3.678	16.051 #
8) L2 AR-1221-1	4.085	3.351	2384243	1040971	86.453	23.574 #
9) L2 AR-1221-2	4.187	3.421f	693638	4672169	34.164	138.332 #
10) L2 AR-1221-3	4.259	3.522	84177	647359	1.291	6.517 #
11) L3 AR-1232-1	4.259	3.522	84177	647359	1.719	8.534 #
12) L3 AR-1232-2	4.823	4.284	1243888	456921	51.244	6.338 #
13) L3 AR-1232-3	5.123	4.466	378158	139016	8.006	3.818 #
14) L3 AR-1232-4	5.305	4.554	377410	270004	15.511	8.476 #
15) L3 AR-1232-5	5.402	4.738	197307	1365151	11.858	47.391 #
16) L4 AR-1242-1	5.118	4.257	329413	47238	5.195	0.479 #
17) L4 AR-1242-2	5.151	4.284	72194	456921	0.758	3.155 #
18) L4 AR-1242-3	5.203	4.466	272138	139016	4.546	1.871 #
19) L4 AR-1242-4	5.305	4.554	377410	270004	7.462	3.781 #
20) L4 AR-1242-5	6.104	5.116	318138	5475973	6.313	56.751 #
21) L5 AR-1248-1	5.118	4.257	329413	47238	7.882	0.687 #
22) L5 AR-1248-2	5.402	4.522	197307	486049	3.338	5.199 #
23) L5 AR-1248-3	5.621	4.554	194730	270004	2.788	2.766
24) L5 AR-1248-4	6.059	4.738	8343488	1365151	108.807	11.597 #
25) L5 AR-1248-5	6.104	5.157	318138	1295398	4.090	10.630 #
26) L6 AR-1254-1	6.059f	5.116	8343488	5475973	143.641	28.378 #
27) L6 AR-1254-2	6.276	5.265	4285088	1542566	34.769	9.263 #
28) L6 AR-1254-3	6.673	5.700	3546970	2318161	26.806	9.297 #
29) L6 AR-1254-4	6.978	5.941	435667	968717	4.383	5.646 #
30) L6 AR-1254-5	7.442	6.394	1176149	4479660	13.373	20.530 #
31) L7 AR-1260-1	6.845	5.860f	1297037	8442874	15.370	53.058 #
32) L7 AR-1260-2	7.121	6.044	4624951	1551746	45.932	7.628 #
33) L7 AR-1260-3	7.527	6.205	321991	862045	3.975	5.047 #
34) L7 AR-1260-4	7.773	6.725	3071566	3482391	38.563	23.960 #
35) L7 AR-1260-5	8.113	6.982	391410	1928455	2.464	5.492 #
36) L8 AR-1262-1	7.527	6.436	321991	1442152	2.664	5.838 #
37) L8 AR-1262-2	8.113	6.725	391410	3482391	2.035	18.017 #
38) L8 AR-1262-3	8.437	7.286	336579	995061	2.507	6.129 #
39) L8 AR-1262-4	8.534	7.358	287199	1623668	4.560	5.669
40) L8 AR-1262-5	9.201	7.903	161171	673562	2.336	5.134 #
41) L9 AR-1268-1	8.437	7.286	336579	995061	1.400	2.077 #

Data Path : Z:\pestpcbsrv\HPCHEM1\ECD_P\Data\PP042222\
 Data File : PP046539.D
 Signal(s) : Signal #1: ECD1A.ch Signal #2: ECD2B.ch
 Acq On : 24 Apr 2022 09:58
 Operator : YP\AJ
 Sample : N2493-01
 Misc :
 ALS Vial : 74 Sample Multiplier: 1

Instrument :
 ECD_P
 ClientSampleId :
 AR1254CCC500

Integration File signal 1: autoint1.e
 Integration File signal 2: autoint2.e
 Quant Time: Apr 24 21:19:14 2022
 Quant Method : Z:\pestpcbsrv\HPCHEM1\ECD_P\methods\PP042222.M
 Quant Title : GC EXTRACTABLES
 QLast Update : Fri Apr 22 19:00:06 2022
 Response via : Initial Calibration
 Integrator: ChemStation

Volume Inj. : 2 µl
 Signal #1 Phase : ZB-MR1 Signal #2 Phase: ZB-MR2
 Signal #1 Info : 30Mx0.32mmx 0.50µ Signal #2 Info : 30M x 0.32mm x 0.25µm

	Compound	RT#1	RT#2	Resp#1	Resp#2	ng/ml	ng/ml
42)	L9 AR-1268-2	8.534	7.358	287199	1623668	1.297	3.834 #
43)	L9 AR-1268-3	8.773	7.576	68908	-6694	0.359	N.D. #
44)	L9 AR-1268-4	9.201	7.903	161171	673562	2.089	4.580 #
45)	L9 AR-1268-5	9.620	8.196	84825	789502	0.151	0.772 #

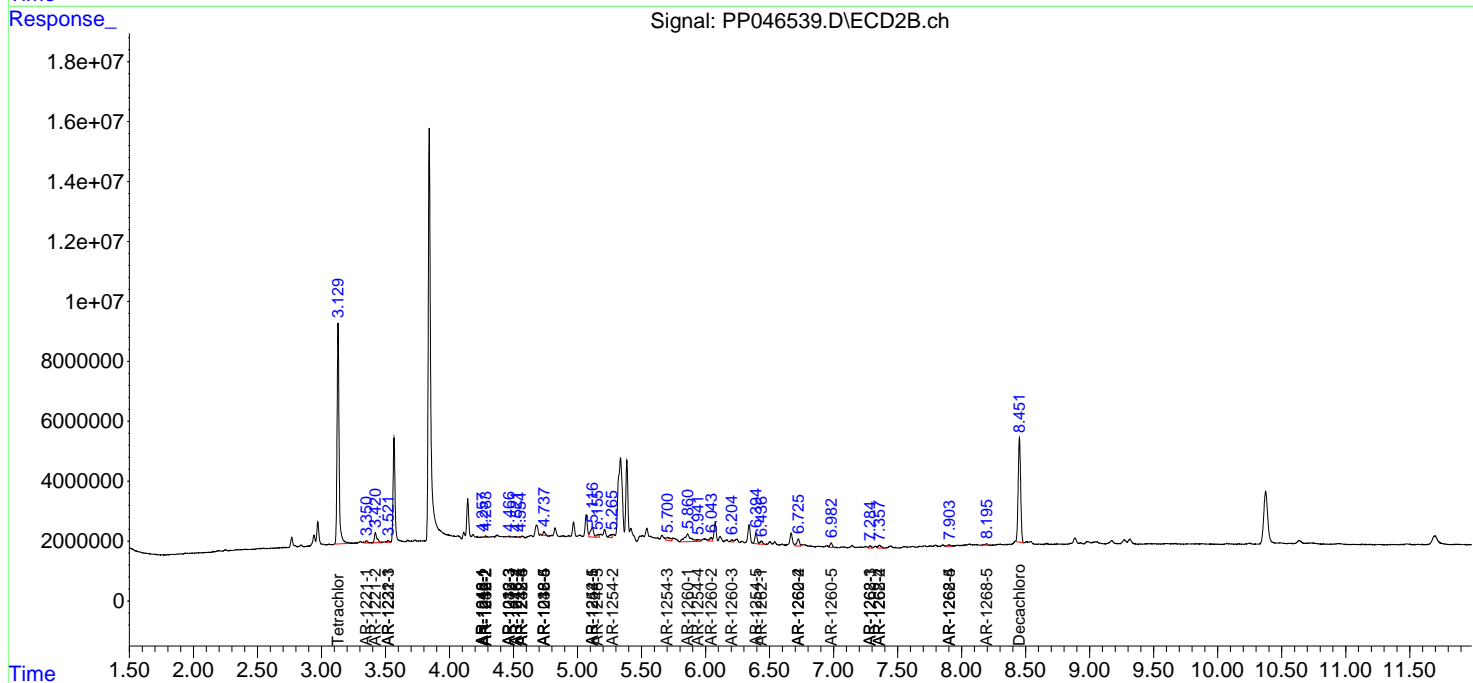
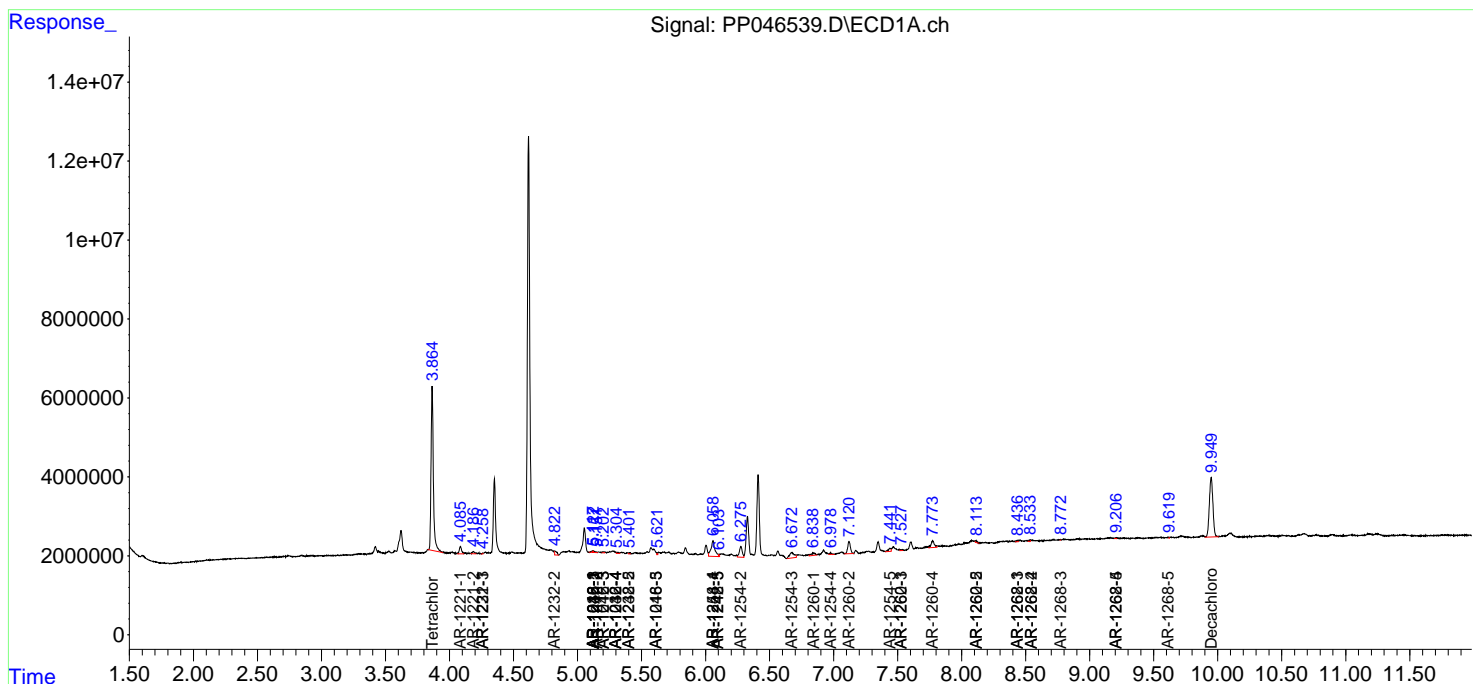
(f)=RT Delta > 1/2 Window (#)=Amounts differ by > 25% (m)=manual int.

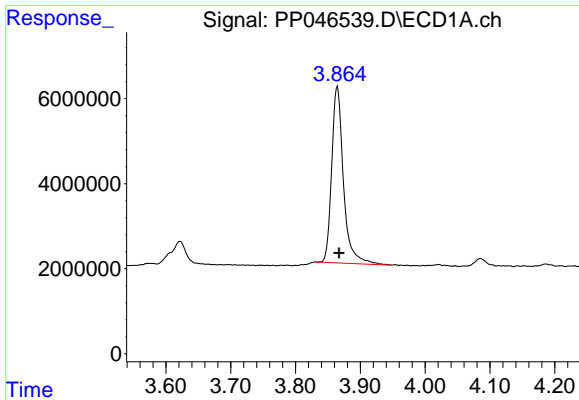
Data Path : Z:\pestpcbsrv\HPCHEM1\ECD_P\Data\PP042222\
 Data File : PP046539.D
 Signal(s) : Signal #1: ECD1A.ch Signal #2: ECD2B.ch
 Acq On : 24 Apr 2022 09:58
 Operator : YP\AJ
 Sample : N2493-01
 Misc :
 ALS Vial : 74 Sample Multiplier: 1

Instrument :
 ECD_P
 ClientSampleId :
 AR1254CCC500

Integration File signal 1: autoint1.e
 Integration File signal 2: autoint2.e
 Quant Time: Apr 24 21:19:14 2022
 Quant Method : Z:\pestpcbsrv\HPCHEM1\ECD_P\methods\PP042222.M
 Quant Title : GC EXTRACTABLES
 QLast Update : Fri Apr 22 19:00:06 2022
 Response via : Initial Calibration
 Integrator: ChemStation

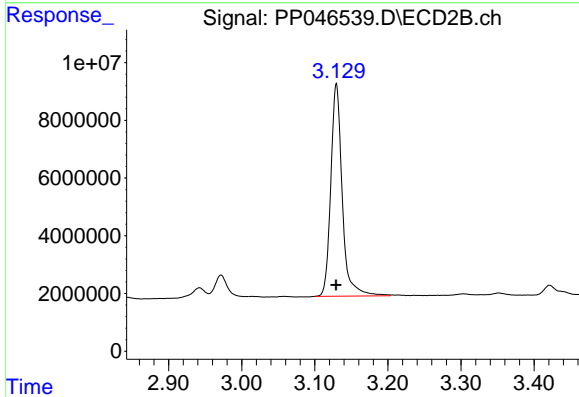
Volume Inj. : 2 µl
 Signal #1 Phase : ZB-MR1 Signal #2 Phase: ZB-MR2
 Signal #1 Info : 30Mx0.32mmx 0.50µ Signal #2 Info : 30M x 0.32mm x 0.25µm



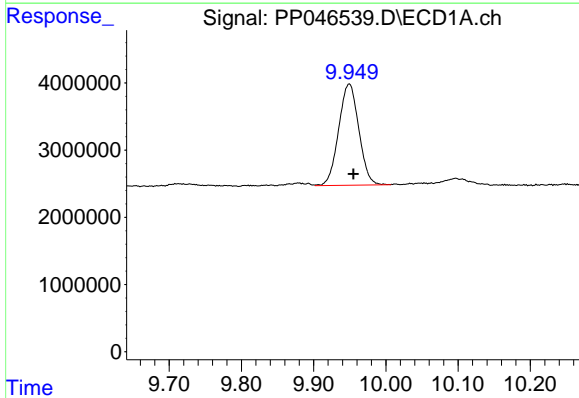


#1 Tetrachloro-m-xylene
 R.T.: 3.865 min
 Delta R.T.: -0.002 min
 Response: 52382871
 Conc: 21.70 ng/ml

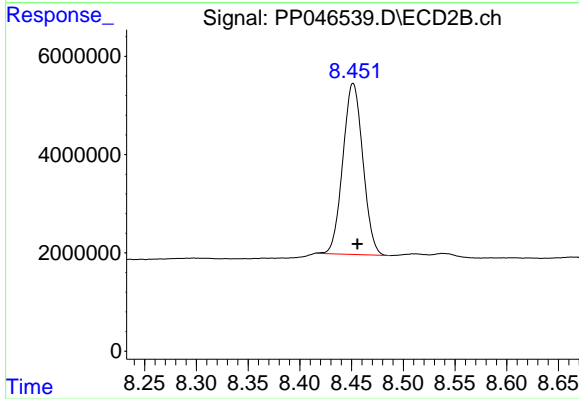
Instrument :
 ECD_P
 ClientSampleId :
 AR1254CCC500



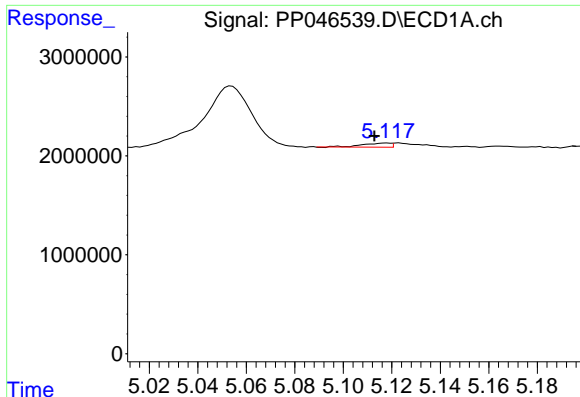
#1 Tetrachloro-m-xylene
 R.T.: 3.130 min
 Delta R.T.: 0.000 min
 Response: 80075120
 Conc: 24.41 ng/ml



#2 Decachlorobiphenyl
 R.T.: 9.950 min
 Delta R.T.: -0.005 min
 Response: 29194046
 Conc: 19.84 ng/ml



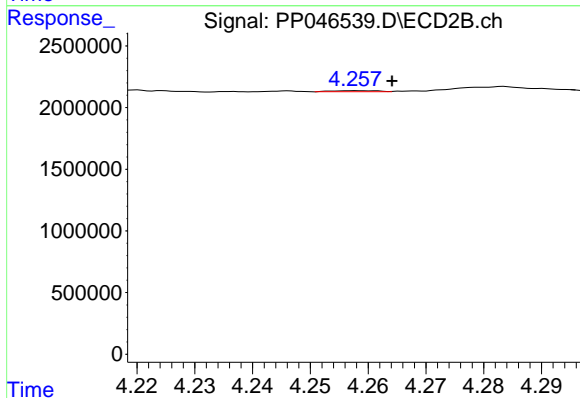
#2 Decachlorobiphenyl
 R.T.: 8.452 min
 Delta R.T.: -0.004 min
 Response: 46894768
 Conc: 19.66 ng/ml



#3 AR-1016-1

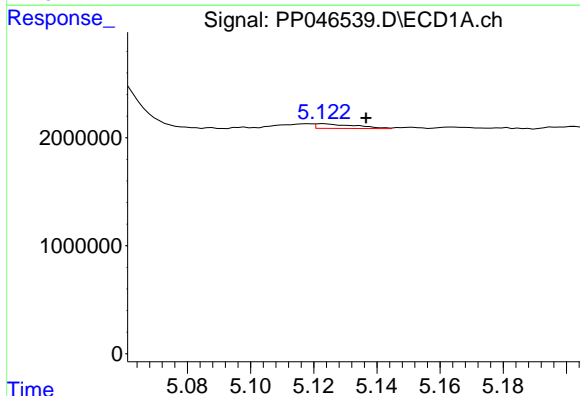
R.T.: 5.118 min
 Delta R.T.: 0.005 min
 Response: 329413
 Conc: 4.37 ng/ml

Instrument :
 ECD_P
 ClientSampleId :
 AR1254CCC500



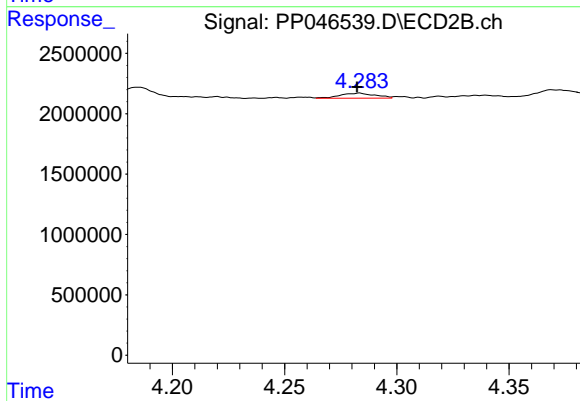
#3 AR-1016-1

R.T.: 4.257 min
 Delta R.T.: -0.007 min
 Response: 47238
 Conc: 0.41 ng/ml



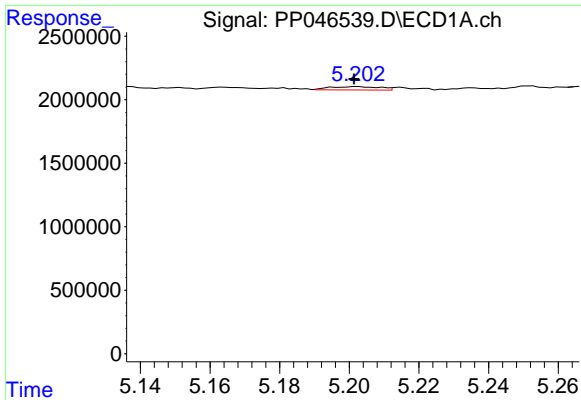
#4 AR-1016-2

R.T.: 5.123 min
 Delta R.T.: -0.013 min
 Response: 378158
 Conc: 3.32 ng/ml



#4 AR-1016-2

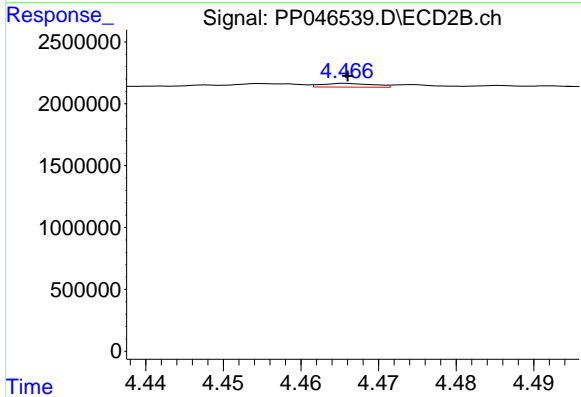
R.T.: 4.284 min
 Delta R.T.: 0.001 min
 Response: 456921
 Conc: 2.69 ng/ml



#5 AR-1016-3

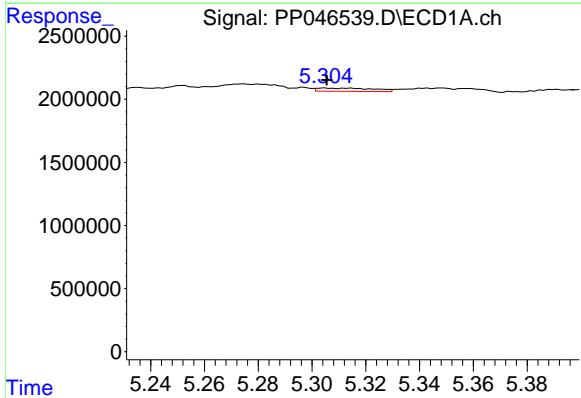
R.T.: 5.203 min
 Delta R.T.: 0.001 min
 Response: 272138
 Conc: 3.81 ng/ml

Instrument :
 ECD_P
 ClientSampleId :
 AR1254CCC500



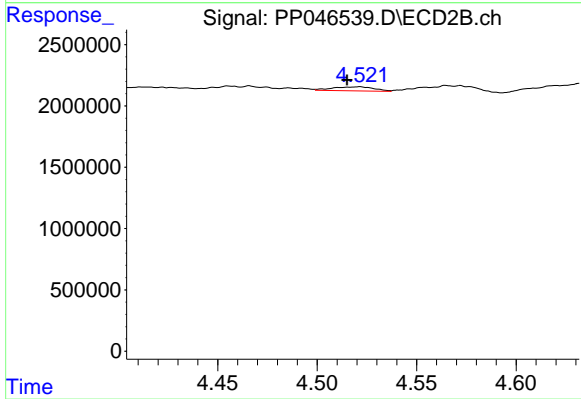
#5 AR-1016-3

R.T.: 4.466 min
 Delta R.T.: 0.000 min
 Response: 139016
 Conc: 1.59 ng/ml



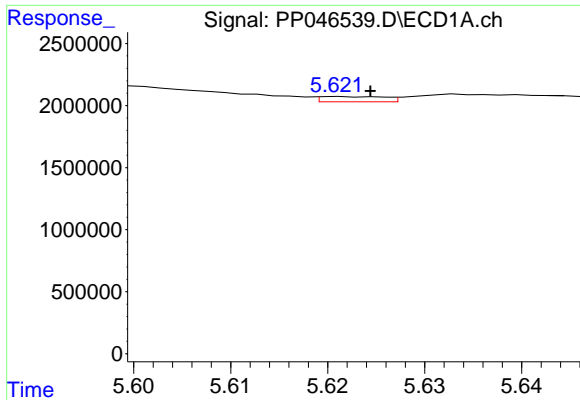
#6 AR-1016-4

R.T.: 5.305 min
 Delta R.T.: 0.000 min
 Response: 377410
 Conc: 6.28 ng/ml



#6 AR-1016-4

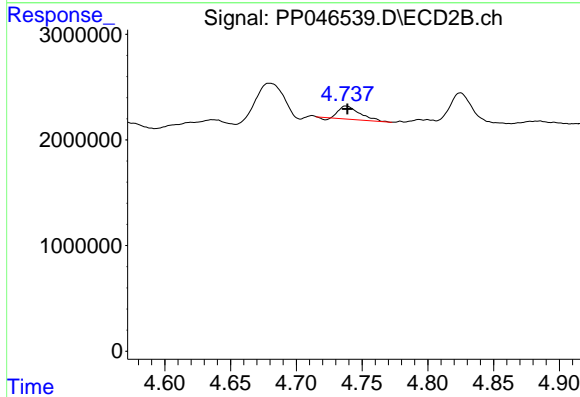
R.T.: 4.522 min
 Delta R.T.: 0.007 min
 Response: 486049
 Conc: 6.98 ng/ml



#7 AR-1016-5

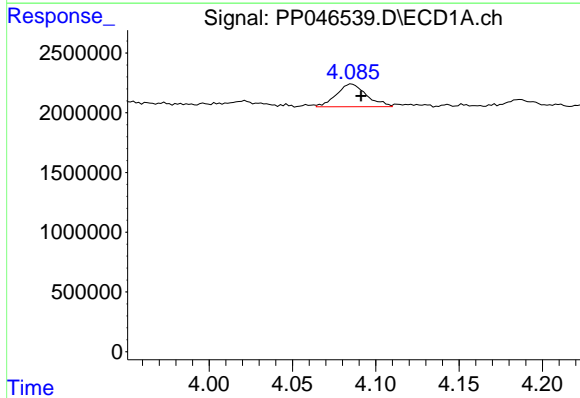
R.T.: 5.621 min
 Delta R.T.: -0.003 min
 Response: 194730
 Conc: 3.68 ng/ml

Instrument :
 ECD_P
 ClientSampleId :
 AR1254CCC500



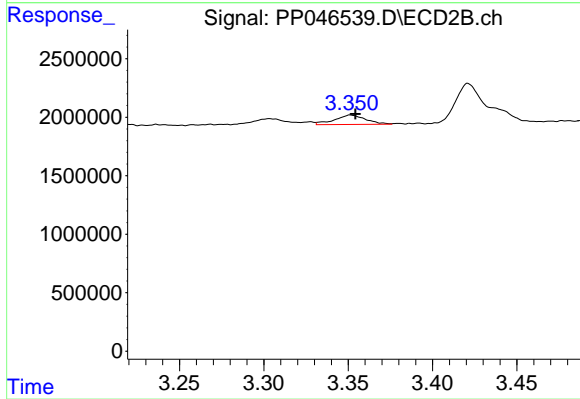
#7 AR-1016-5

R.T.: 4.738 min
 Delta R.T.: -0.001 min
 Response: 1365151
 Conc: 16.05 ng/ml



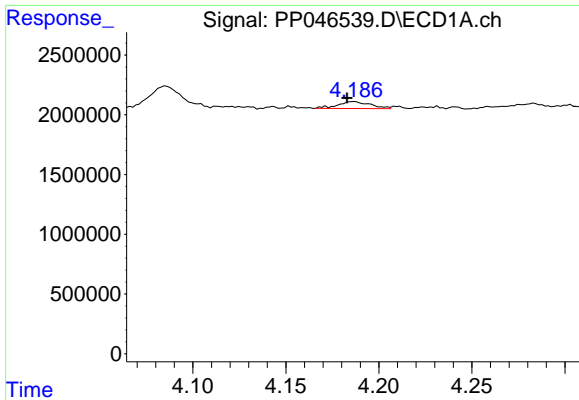
#8 AR-1221-1

R.T.: 4.085 min
 Delta R.T.: -0.006 min
 Response: 2384243
 Conc: 86.45 ng/ml



#8 AR-1221-1

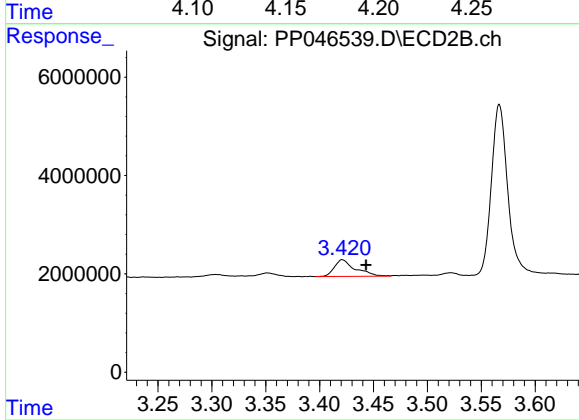
R.T.: 3.351 min
 Delta R.T.: -0.003 min
 Response: 1040971
 Conc: 23.57 ng/ml



#9 AR-1221-2

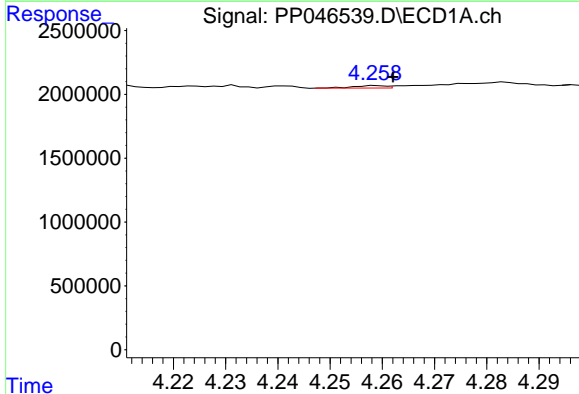
R.T.: 4.187 min
 Delta R.T.: 0.004 min
 Response: 693638
 Conc: 34.16 ng/ml

Instrument :
 ECD_P
 ClientSampleId :
 AR1254CCC500



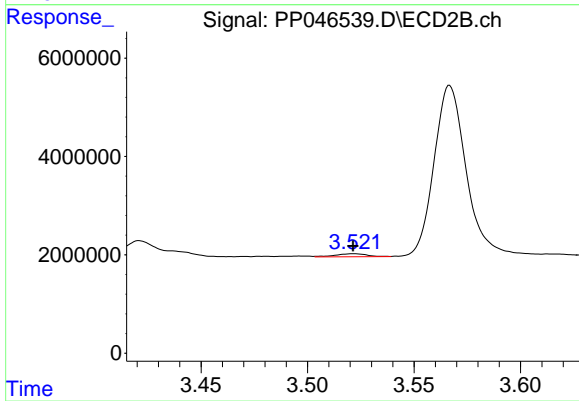
#9 AR-1221-2

R.T.: 3.421 min
 Delta R.T.: -0.022 min
 Response: 4672169
 Conc: 138.33 ng/ml



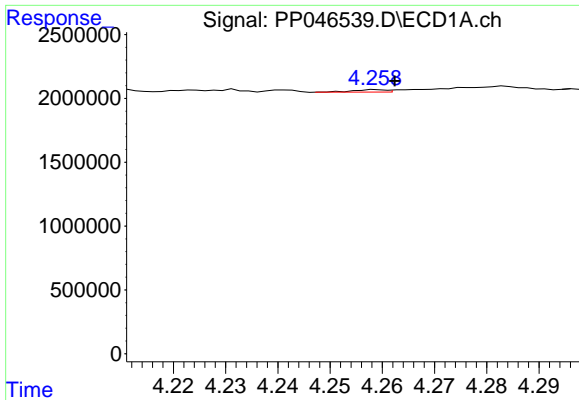
#10 AR-1221-3

R.T.: 4.259 min
 Delta R.T.: -0.003 min
 Response: 84177
 Conc: 1.29 ng/ml



#10 AR-1221-3

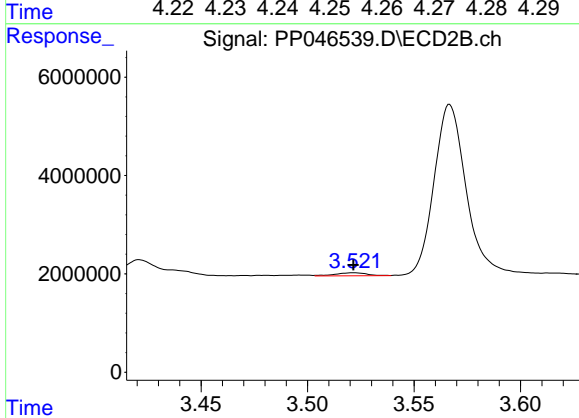
R.T.: 3.522 min
 Delta R.T.: 0.000 min
 Response: 647359
 Conc: 6.52 ng/ml



#11 AR-1232-1

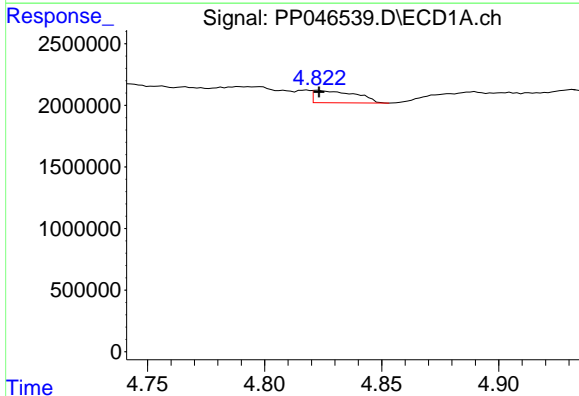
R.T.: 4.259 min
 Delta R.T.: -0.003 min
 Response: 84177
 Conc: 1.72 ng/ml

Instrument :
 ECD_P
 ClientSampleId :
 AR1254CCC500



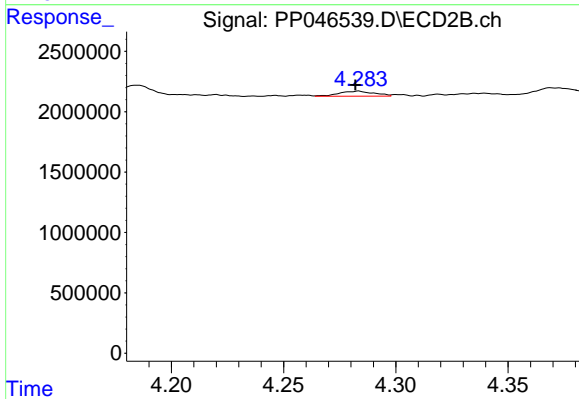
#11 AR-1232-1

R.T.: 3.522 min
 Delta R.T.: 0.000 min
 Response: 647359
 Conc: 8.53 ng/ml



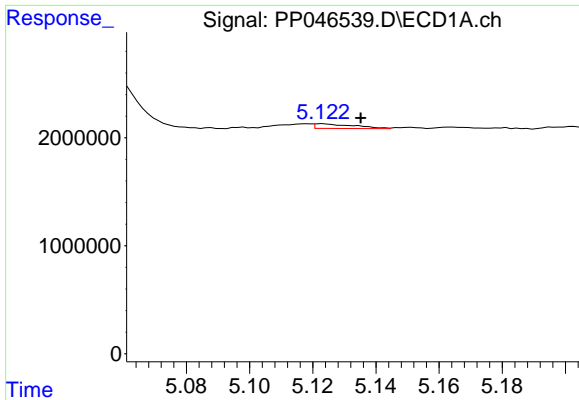
#12 AR-1232-2

R.T.: 4.823 min
 Delta R.T.: 0.000 min
 Response: 1243888
 Conc: 51.24 ng/ml



#12 AR-1232-2

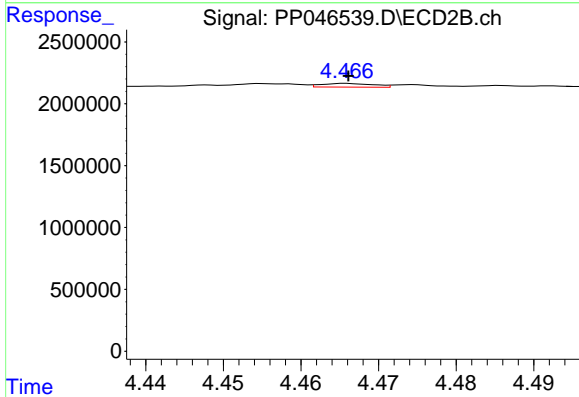
R.T.: 4.284 min
 Delta R.T.: 0.002 min
 Response: 456921
 Conc: 6.34 ng/ml



#13 AR-1232-3

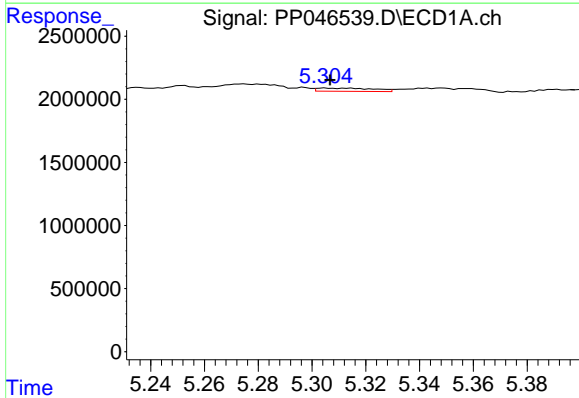
R.T.: 5.123 min
 Delta R.T.: -0.012 min
 Response: 378158
 Conc: 8.01 ng/ml

Instrument :
 ECD_P
 ClientSampleId :
 AR1254CCC500



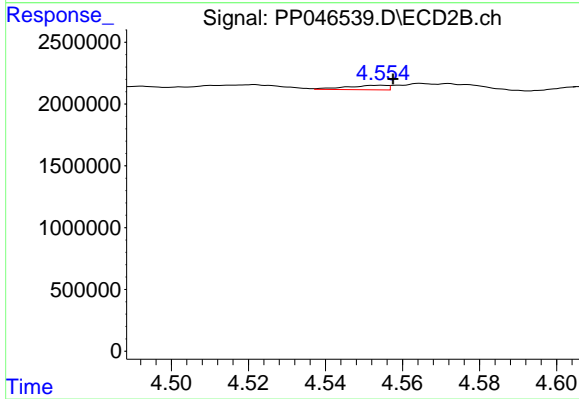
#13 AR-1232-3

R.T.: 4.466 min
 Delta R.T.: 0.000 min
 Response: 139016
 Conc: 3.82 ng/ml



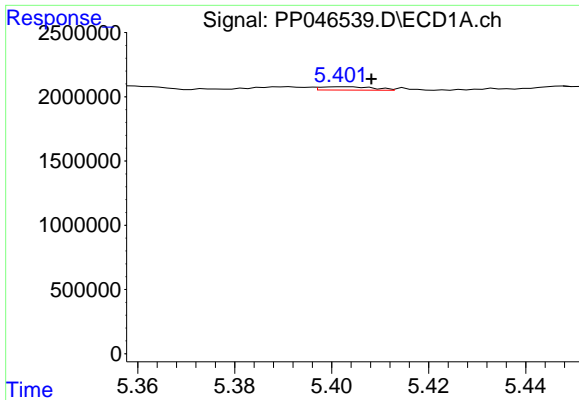
#14 AR-1232-4

R.T.: 5.305 min
 Delta R.T.: -0.002 min
 Response: 377410
 Conc: 15.51 ng/ml



#14 AR-1232-4

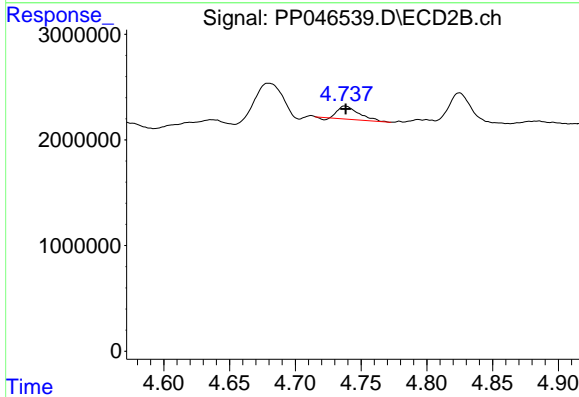
R.T.: 4.554 min
 Delta R.T.: -0.003 min
 Response: 270004
 Conc: 8.48 ng/ml



#15 AR-1232-5

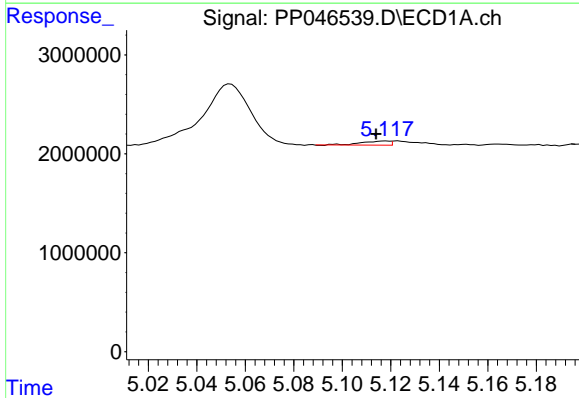
R.T.: 5.402 min
 Delta R.T.: -0.006 min
 Response: 197307
 Conc: 11.86 ng/ml

Instrument :
 ECD_P
 ClientSampleId :
 AR1254CCC500



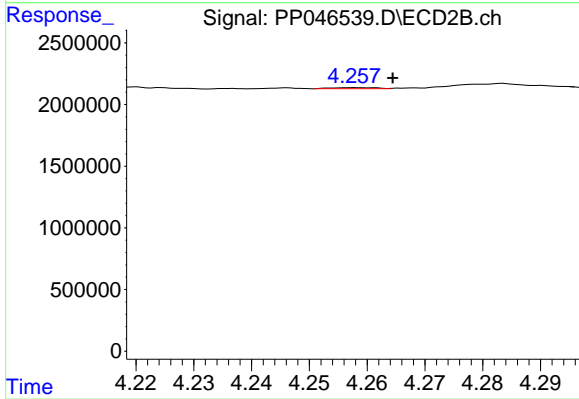
#15 AR-1232-5

R.T.: 4.738 min
 Delta R.T.: 0.000 min
 Response: 1365151
 Conc: 47.39 ng/ml



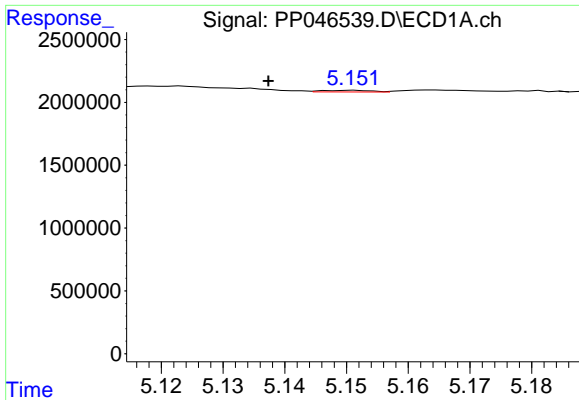
#16 AR-1242-1

R.T.: 5.118 min
 Delta R.T.: 0.004 min
 Response: 329413
 Conc: 5.20 ng/ml



#16 AR-1242-1

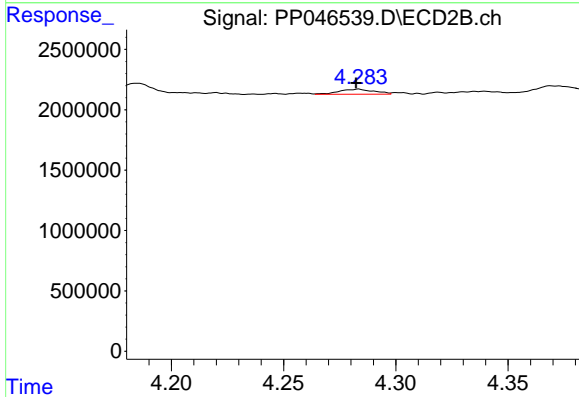
R.T.: 4.257 min
 Delta R.T.: -0.007 min
 Response: 47238
 Conc: 0.48 ng/ml



#17 AR-1242-2

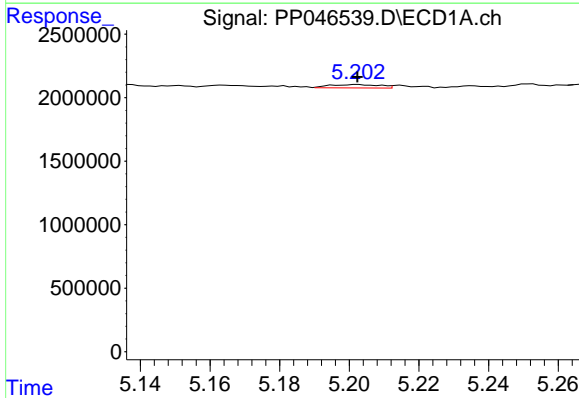
R.T.: 5.151 min
 Delta R.T.: 0.014 min
 Response: 72194
 Conc: 0.76 ng/ml

Instrument :
 ECD_P
 ClientSampleId :
 AR1254CCC500



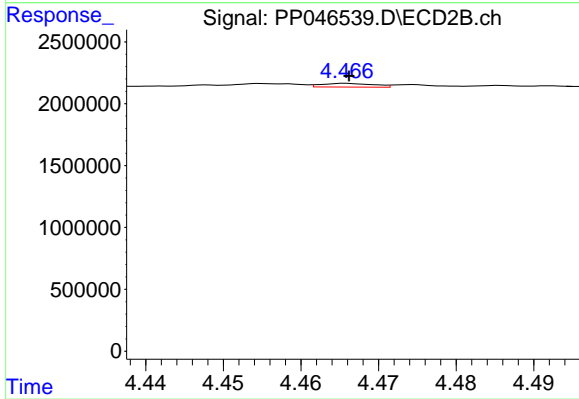
#17 AR-1242-2

R.T.: 4.284 min
 Delta R.T.: 0.001 min
 Response: 456921
 Conc: 3.15 ng/ml



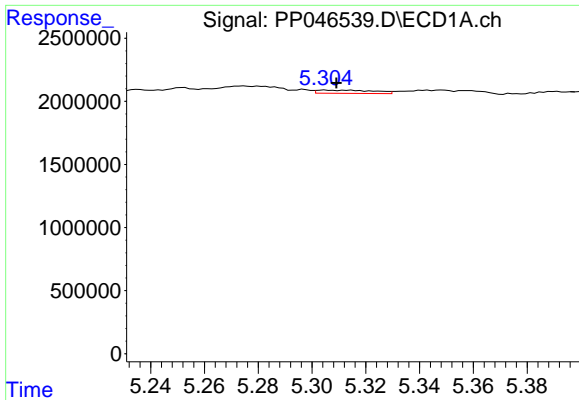
#18 AR-1242-3

R.T.: 5.203 min
 Delta R.T.: 0.000 min
 Response: 272138
 Conc: 4.55 ng/ml



#18 AR-1242-3

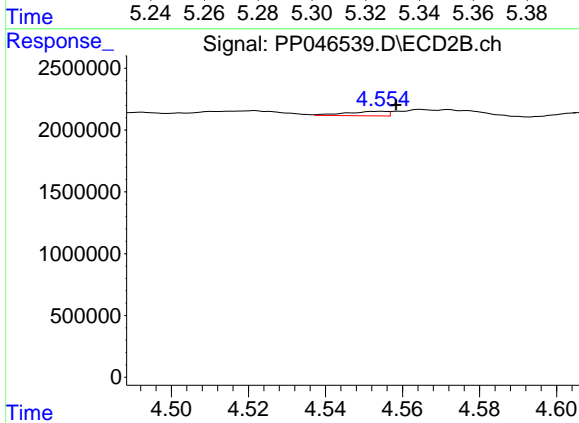
R.T.: 4.466 min
 Delta R.T.: 0.000 min
 Response: 139016
 Conc: 1.87 ng/ml



#19 AR-1242-4

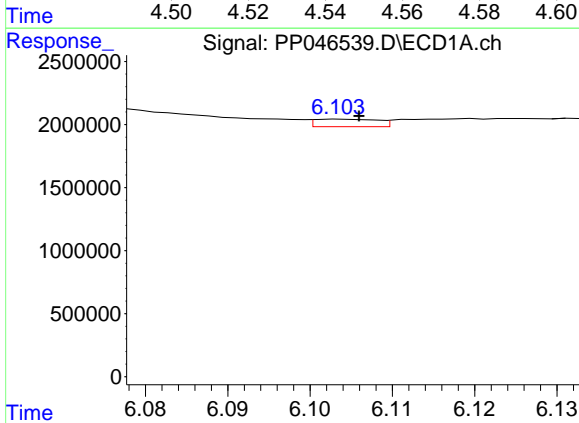
R.T.: 5.305 min
 Delta R.T.: -0.004 min
 Response: 377410
 Conc: 7.46 ng/ml

Instrument :
 ECD_P
 ClientSampleId :
 AR1254CCC500



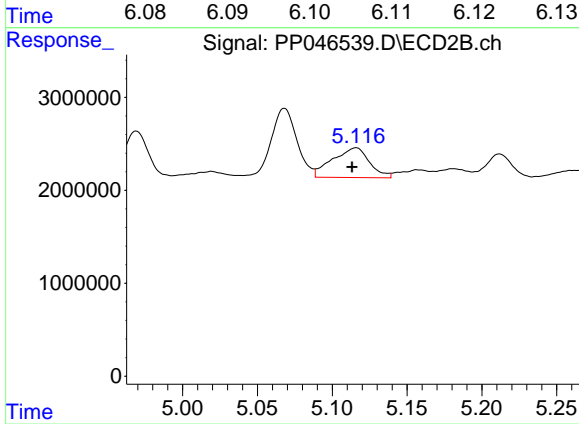
#19 AR-1242-4

R.T.: 4.554 min
 Delta R.T.: -0.004 min
 Response: 270004
 Conc: 3.78 ng/ml



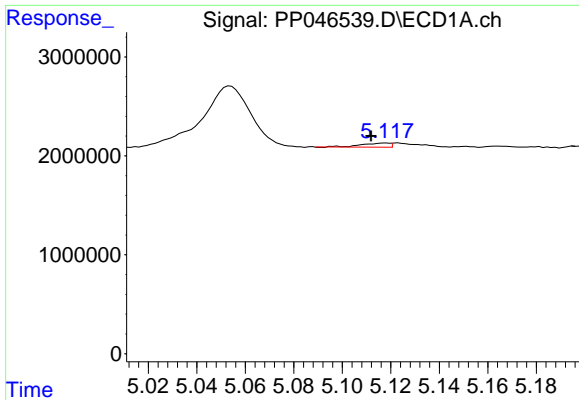
#20 AR-1242-5

R.T.: 6.104 min
 Delta R.T.: -0.002 min
 Response: 318138
 Conc: 6.31 ng/ml



#20 AR-1242-5

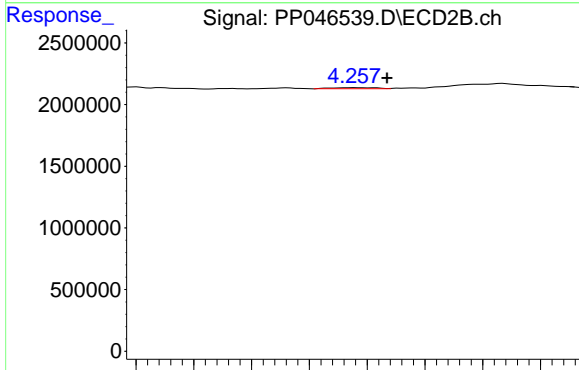
R.T.: 5.116 min
 Delta R.T.: 0.003 min
 Response: 5475973
 Conc: 56.75 ng/ml



#21 AR-1248-1

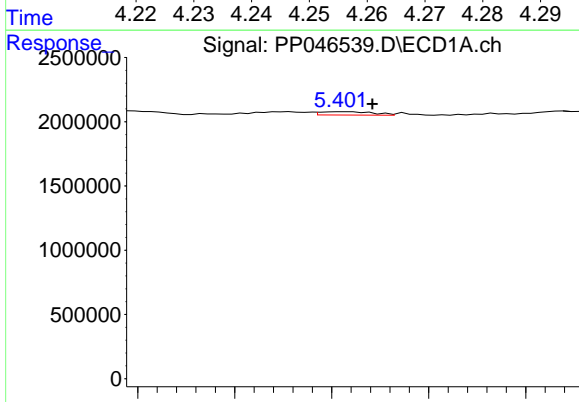
R.T.: 5.118 min
 Delta R.T.: 0.006 min
 Response: 329413
 Conc: 7.88 ng/ml

Instrument :
 ECD_P
 ClientSampleId :
 AR1254CCC500



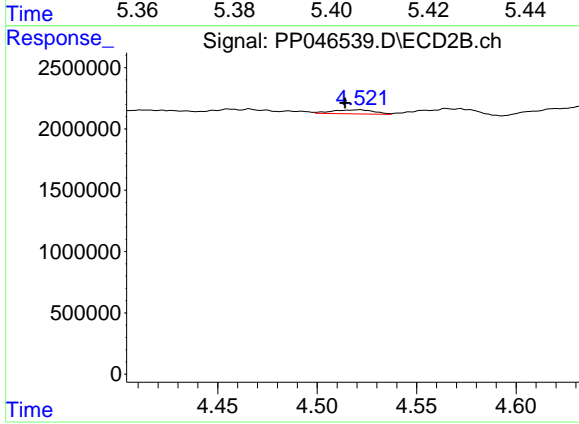
#21 AR-1248-1

R.T.: 4.257 min
 Delta R.T.: -0.006 min
 Response: 47238
 Conc: 0.69 ng/ml



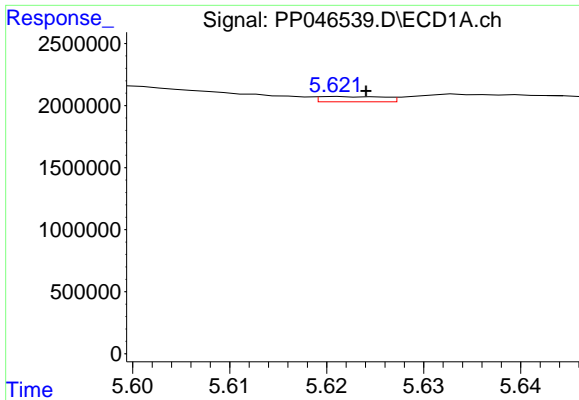
#22 AR-1248-2

R.T.: 5.402 min
 Delta R.T.: -0.006 min
 Response: 197307
 Conc: 3.34 ng/ml



#22 AR-1248-2

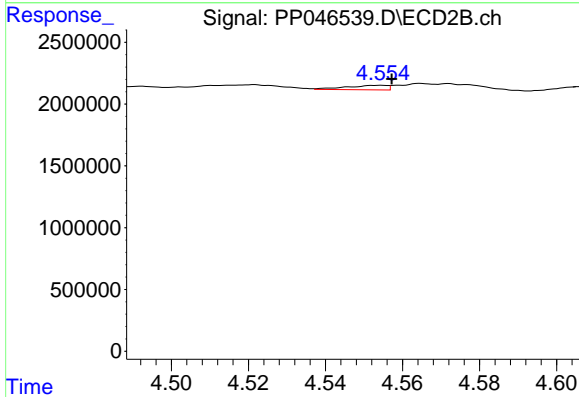
R.T.: 4.522 min
 Delta R.T.: 0.008 min
 Response: 486049
 Conc: 5.20 ng/ml



#23 AR-1248-3

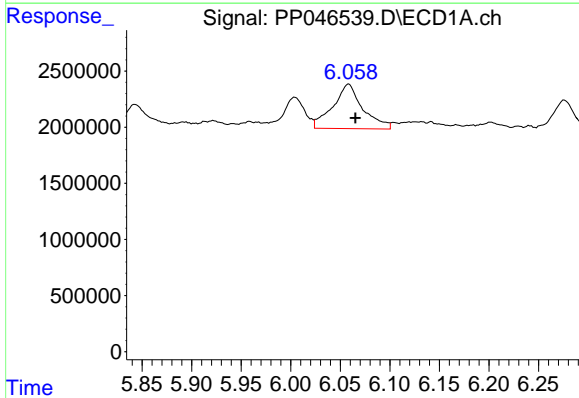
R.T.: 5.621 min
 Delta R.T.: -0.003 min
 Response: 194730
 Conc: 2.79 ng/ml

Instrument :
 ECD_P
 ClientSampleId :
 AR1254CCC500



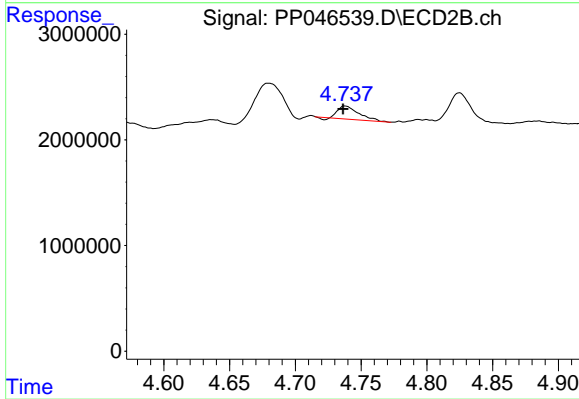
#23 AR-1248-3

R.T.: 4.554 min
 Delta R.T.: -0.003 min
 Response: 270004
 Conc: 2.77 ng/ml



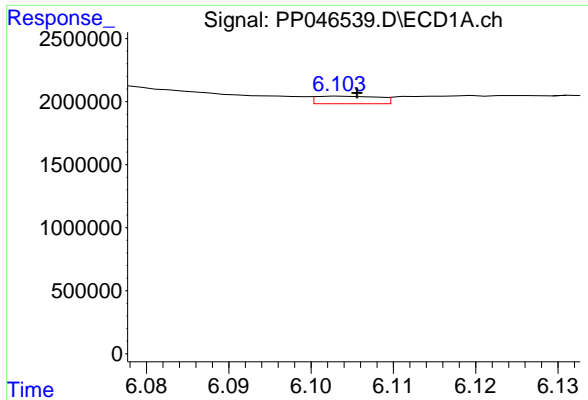
#24 AR-1248-4

R.T.: 6.059 min
 Delta R.T.: -0.006 min
 Response: 8343488
 Conc: 108.81 ng/ml



#24 AR-1248-4

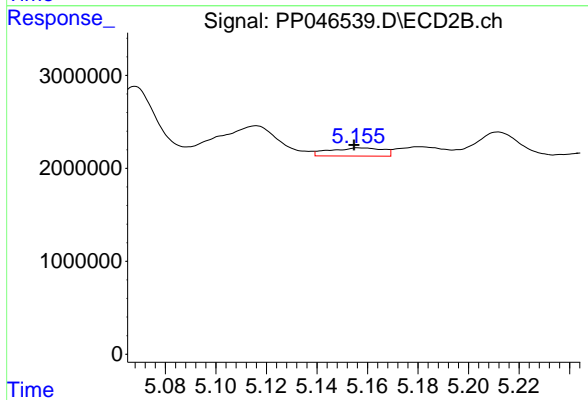
R.T.: 4.738 min
 Delta R.T.: 0.001 min
 Response: 1365151
 Conc: 11.60 ng/ml



#25 AR-1248-5

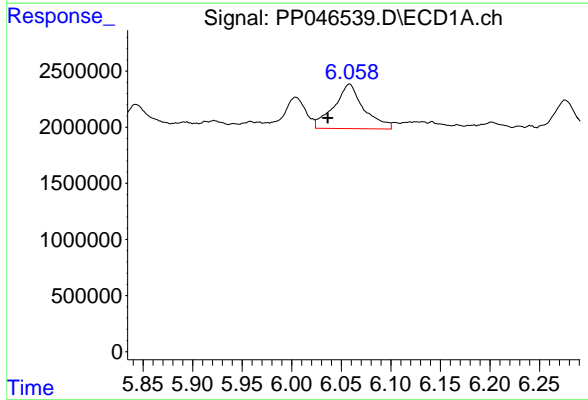
R.T.: 6.104 min
 Delta R.T.: -0.002 min
 Response: 318138
 Conc: 4.09 ng/ml

Instrument :
 ECD_P
 ClientSampleId :
 AR1254CCC500



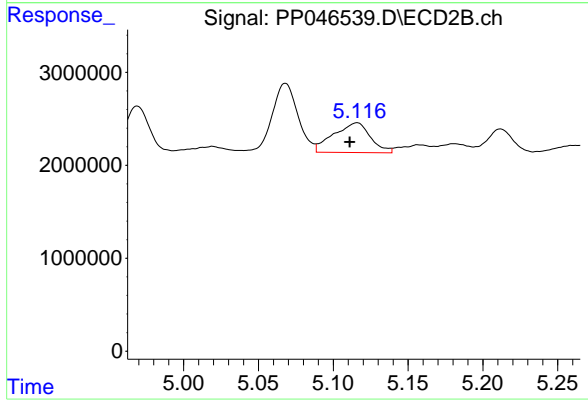
#25 AR-1248-5

R.T.: 5.157 min
 Delta R.T.: 0.002 min
 Response: 1295398
 Conc: 10.63 ng/ml



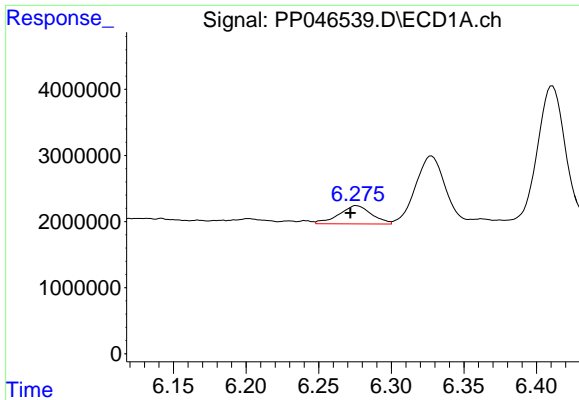
#26 AR-1254-1

R.T.: 6.059 min
 Delta R.T.: 0.022 min
 Response: 8343488
 Conc: 143.64 ng/ml



#26 AR-1254-1

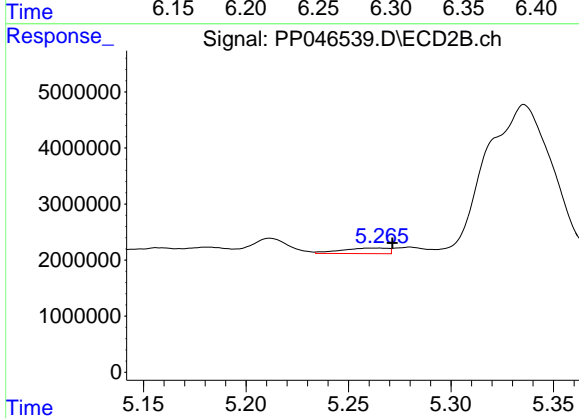
R.T.: 5.116 min
 Delta R.T.: 0.005 min
 Response: 5475973
 Conc: 28.38 ng/ml



#27 AR-1254-2

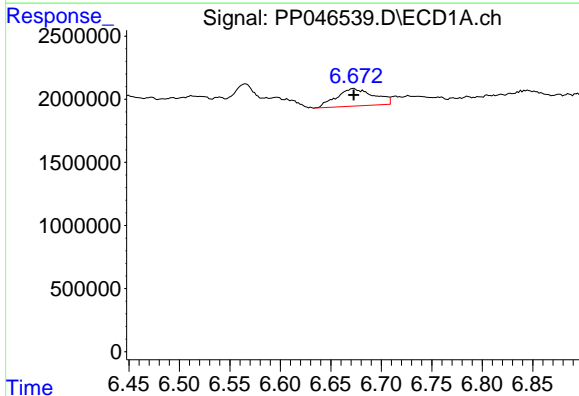
R.T.: 6.276 min
 Delta R.T.: 0.004 min
 Response: 4285088
 Conc: 34.77 ng/ml

Instrument :
 ECD_P
 ClientSampleId :
 AR1254CCC500



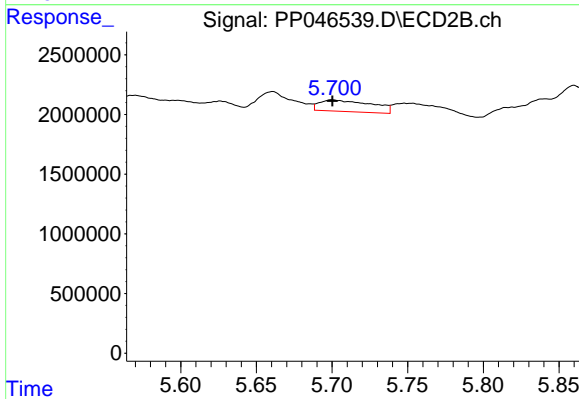
#27 AR-1254-2

R.T.: 5.265 min
 Delta R.T.: -0.007 min
 Response: 1542566
 Conc: 9.26 ng/ml



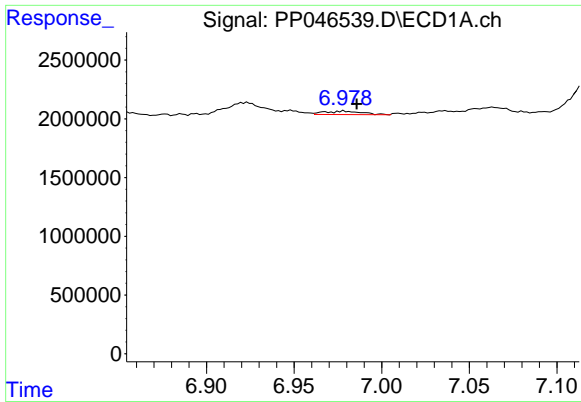
#28 AR-1254-3

R.T.: 6.673 min
 Delta R.T.: 0.000 min
 Response: 3546970
 Conc: 26.81 ng/ml



#28 AR-1254-3

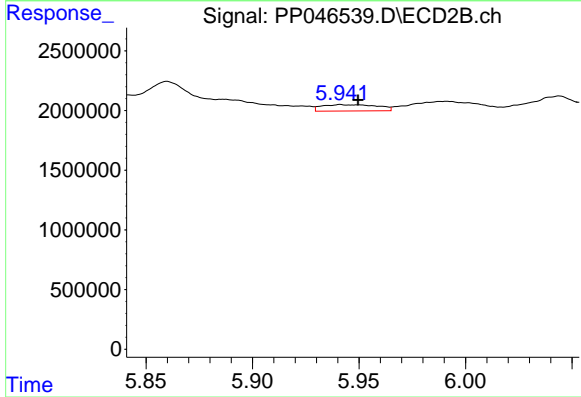
R.T.: 5.700 min
 Delta R.T.: 0.000 min
 Response: 2318161
 Conc: 9.30 ng/ml



#29 AR-1254-4

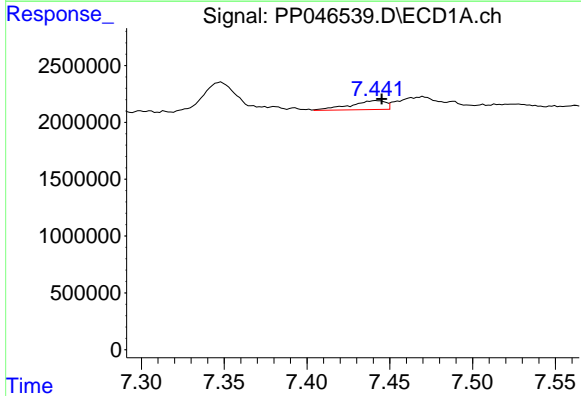
R.T.: 6.978 min
 Delta R.T.: -0.007 min
 Response: 435667
 Conc: 4.38 ng/ml

Instrument :
 ECD_P
 ClientSampleId :
 AR1254CCC500



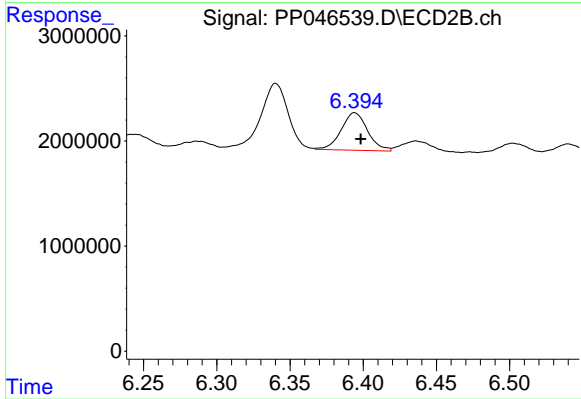
#29 AR-1254-4

R.T.: 5.941 min
 Delta R.T.: -0.008 min
 Response: 968717
 Conc: 5.65 ng/ml



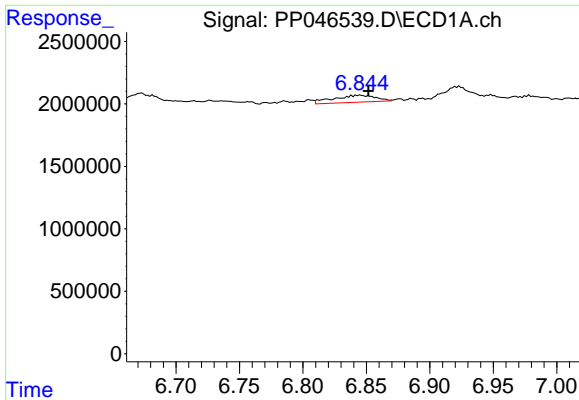
#30 AR-1254-5

R.T.: 7.442 min
 Delta R.T.: -0.003 min
 Response: 1176149
 Conc: 13.37 ng/ml



#30 AR-1254-5

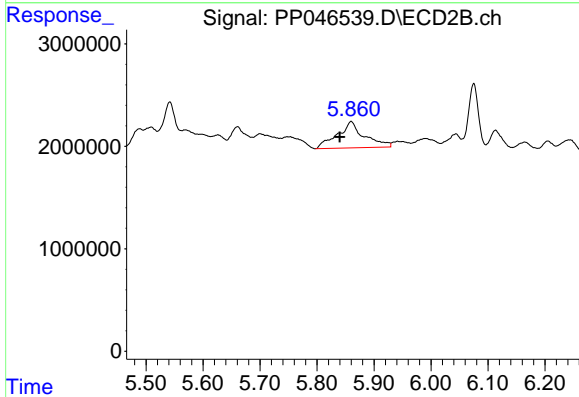
R.T.: 6.394 min
 Delta R.T.: -0.004 min
 Response: 4479660
 Conc: 20.53 ng/ml



#31 AR-1260-1

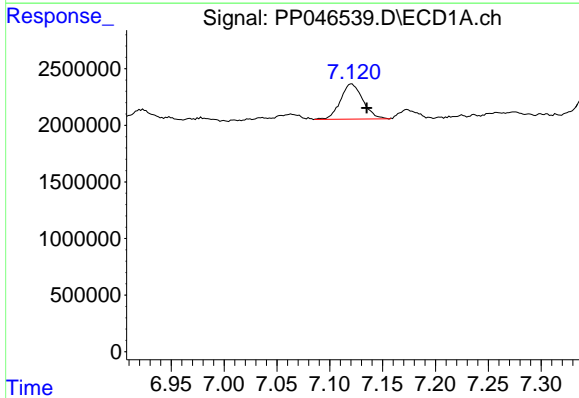
R.T.: 6.845 min
 Delta R.T.: -0.007 min
 Response: 1297037
 Conc: 15.37 ng/ml

Instrument :
 ECD_P
 ClientSampleId :
 AR1254CCC500



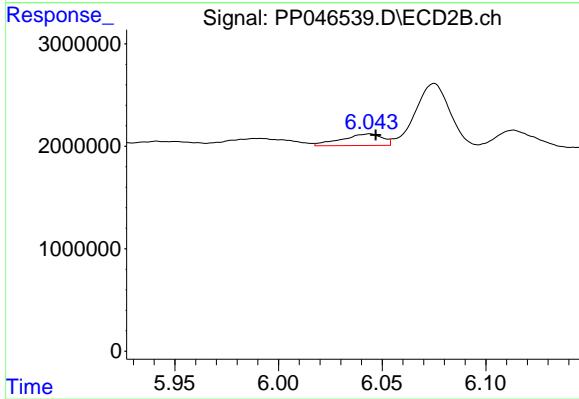
#31 AR-1260-1

R.T.: 5.860 min
 Delta R.T.: 0.020 min
 Response: 8442874
 Conc: 53.06 ng/ml



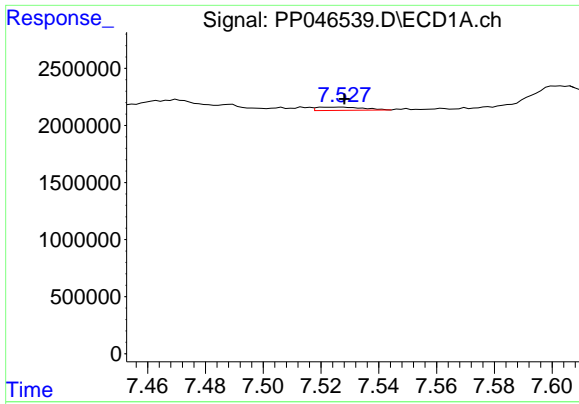
#32 AR-1260-2

R.T.: 7.121 min
 Delta R.T.: -0.014 min
 Response: 4624951
 Conc: 45.93 ng/ml



#32 AR-1260-2

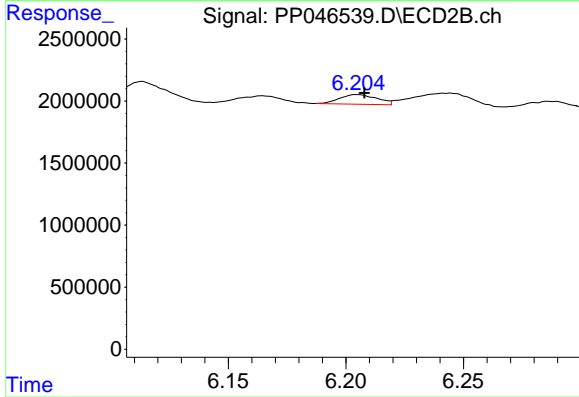
R.T.: 6.044 min
 Delta R.T.: -0.003 min
 Response: 1551746
 Conc: 7.63 ng/ml



#33 AR-1260-3

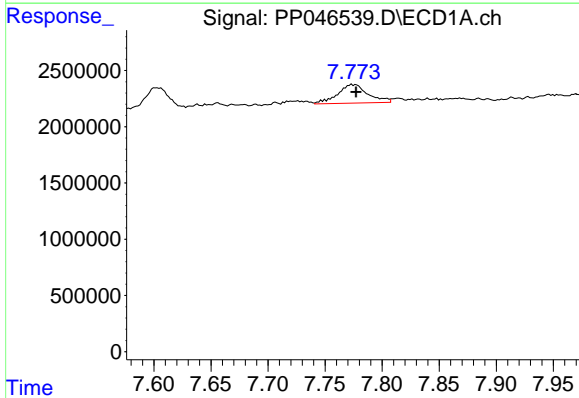
R.T.: 7.527 min
 Delta R.T.: -0.001 min
 Response: 321991
 Conc: 3.97 ng/ml

Instrument :
 ECD_P
 ClientSampleId :
 AR1254CCC500



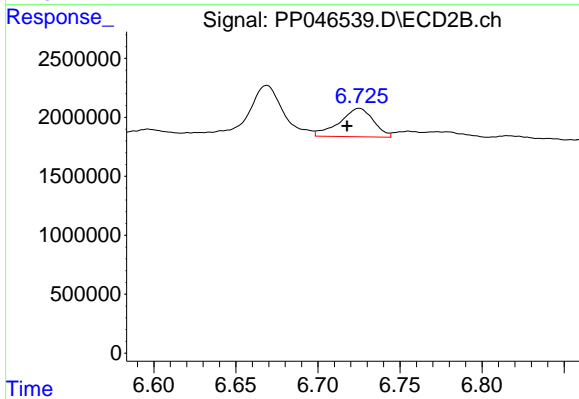
#33 AR-1260-3

R.T.: 6.205 min
 Delta R.T.: -0.003 min
 Response: 862045
 Conc: 5.05 ng/ml



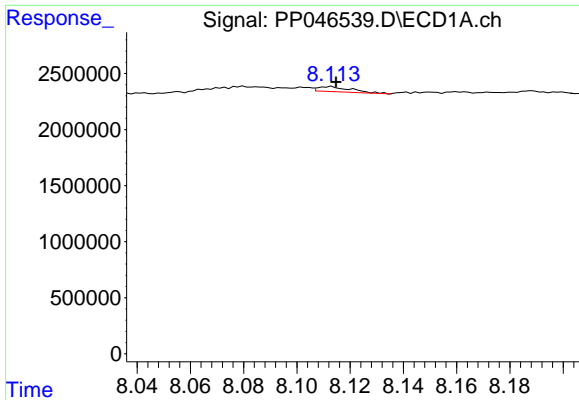
#34 AR-1260-4

R.T.: 7.773 min
 Delta R.T.: -0.004 min
 Response: 3071566
 Conc: 38.56 ng/ml



#34 AR-1260-4

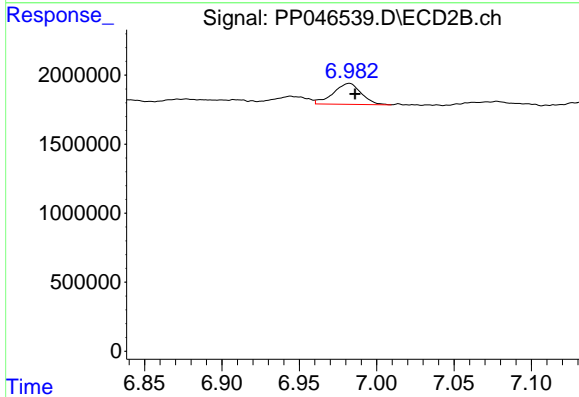
R.T.: 6.725 min
 Delta R.T.: 0.007 min
 Response: 3482391
 Conc: 23.96 ng/ml



#35 AR-1260-5

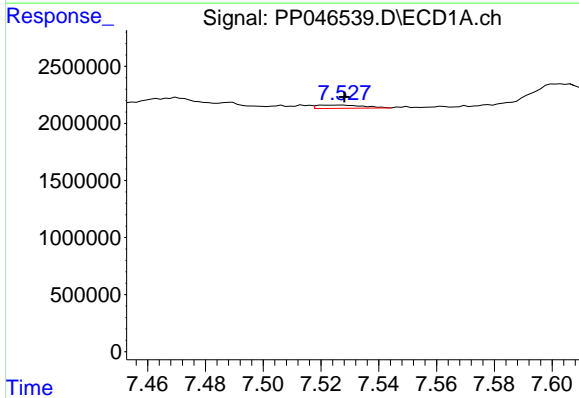
R.T.: 8.113 min
 Delta R.T.: -0.002 min
 Response: 391410
 Conc: 2.46 ng/ml

Instrument :
 ECD_P
 ClientSampleId :
 AR1254CCC500



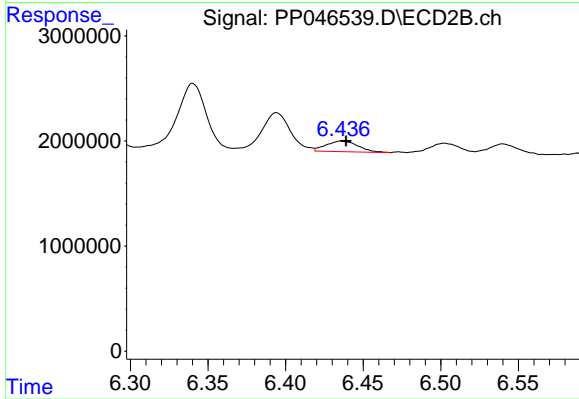
#35 AR-1260-5

R.T.: 6.982 min
 Delta R.T.: -0.004 min
 Response: 1928455
 Conc: 5.49 ng/ml



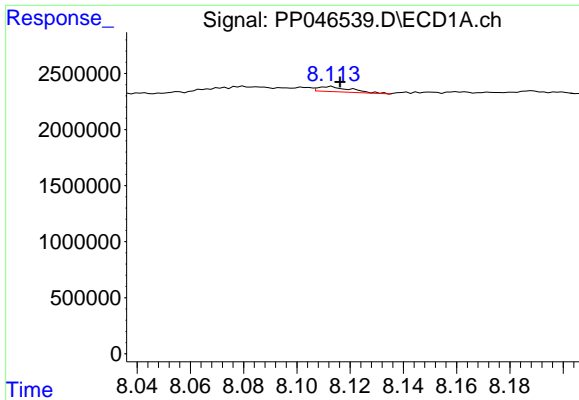
#36 AR-1262-1

R.T.: 7.527 min
 Delta R.T.: -0.001 min
 Response: 321991
 Conc: 2.66 ng/ml



#36 AR-1262-1

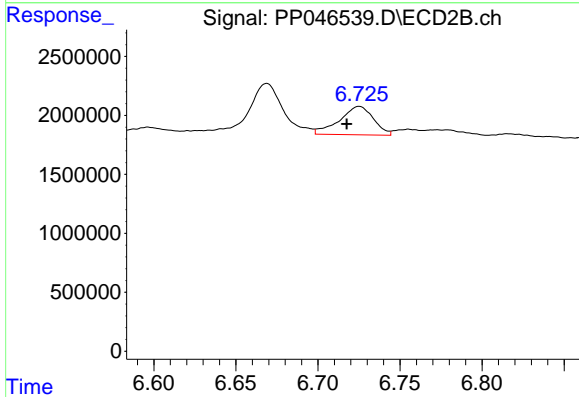
R.T.: 6.436 min
 Delta R.T.: -0.003 min
 Response: 1442152
 Conc: 5.84 ng/ml



#37 AR-1262-2

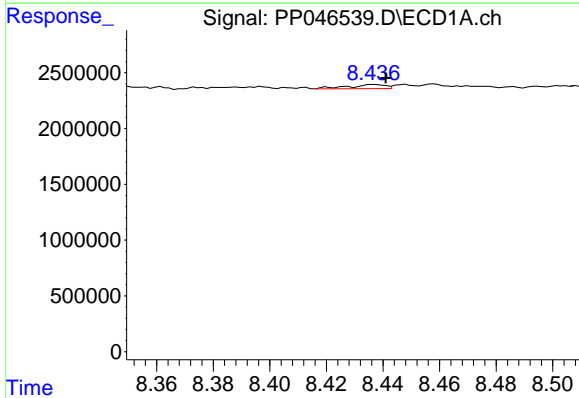
R.T.: 8.113 min
 Delta R.T.: -0.003 min
 Response: 391410
 Conc: 2.04 ng/ml

Instrument :
 ECD_P
 ClientSampleId :
 AR1254CCC500



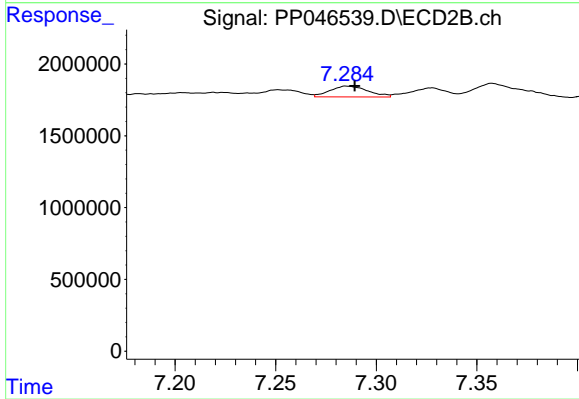
#37 AR-1262-2

R.T.: 6.725 min
 Delta R.T.: 0.008 min
 Response: 3482391
 Conc: 18.02 ng/ml



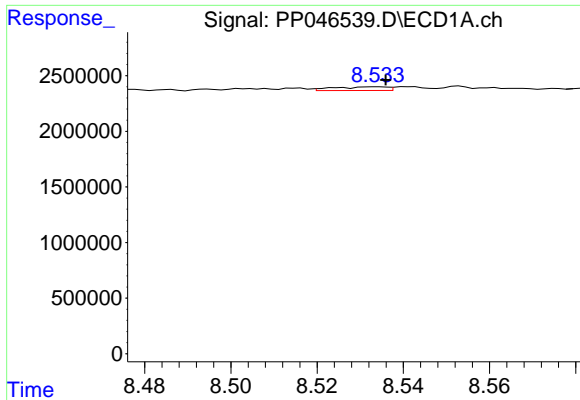
#38 AR-1262-3

R.T.: 8.437 min
 Delta R.T.: -0.004 min
 Response: 336579
 Conc: 2.51 ng/ml



#38 AR-1262-3

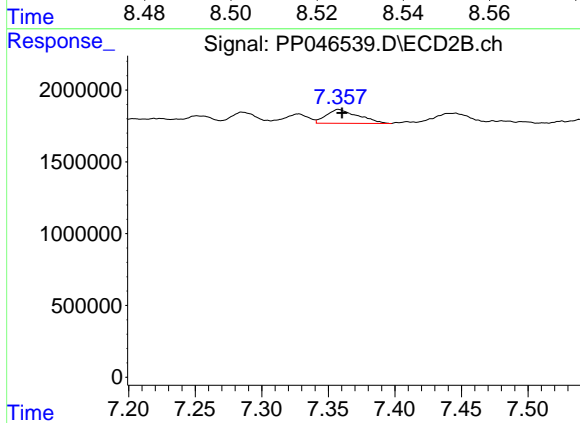
R.T.: 7.286 min
 Delta R.T.: -0.004 min
 Response: 995061
 Conc: 6.13 ng/ml



#39 AR-1262-4

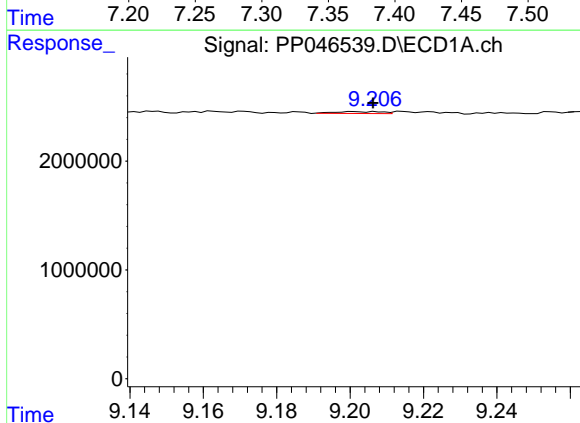
R.T.: 8.534 min
 Delta R.T.: -0.002 min
 Response: 287199
 Conc: 4.56 ng/ml

Instrument :
 ECD_P
 ClientSampleId :
 AR1254CCC500



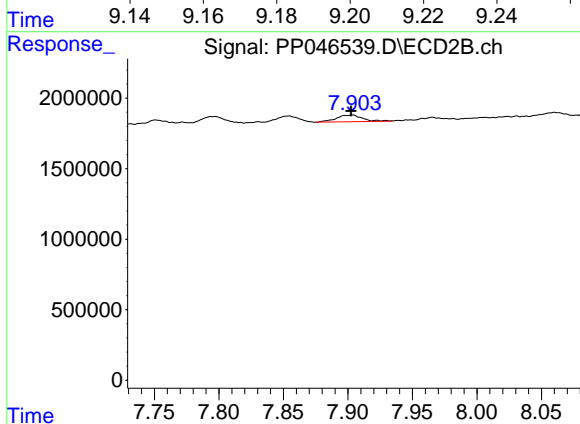
#39 AR-1262-4

R.T.: 7.358 min
 Delta R.T.: -0.003 min
 Response: 1623668
 Conc: 5.67 ng/ml



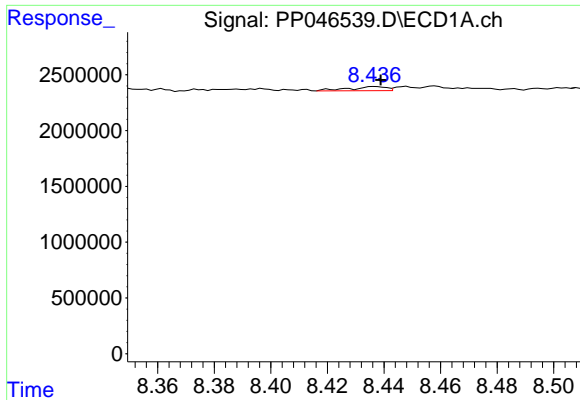
#40 AR-1262-5

R.T.: 9.201 min
 Delta R.T.: -0.005 min
 Response: 161171
 Conc: 2.34 ng/ml



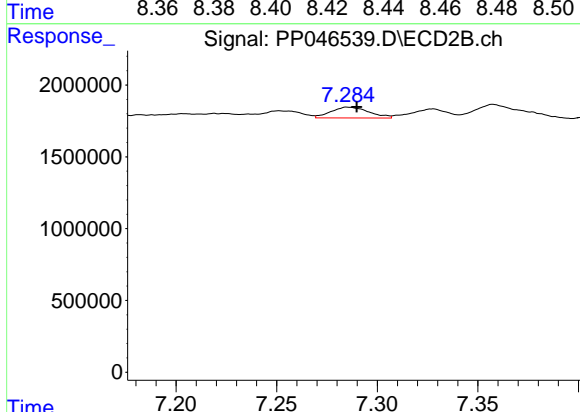
#40 AR-1262-5

R.T.: 7.903 min
 Delta R.T.: 0.000 min
 Response: 673562
 Conc: 5.13 ng/ml

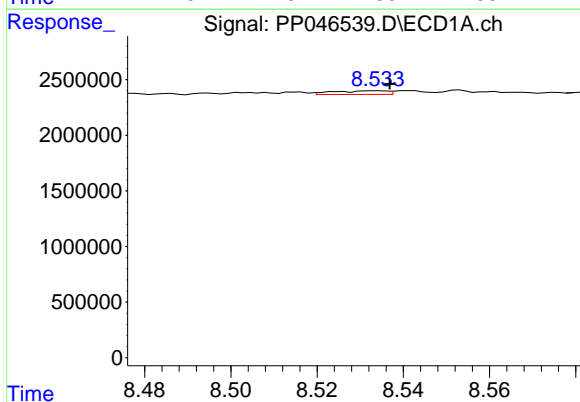


#41 AR-1268-1
 R.T.: 8.437 min
 Delta R.T.: -0.002 min
 Response: 336579
 Conc: 1.40 ng/ml

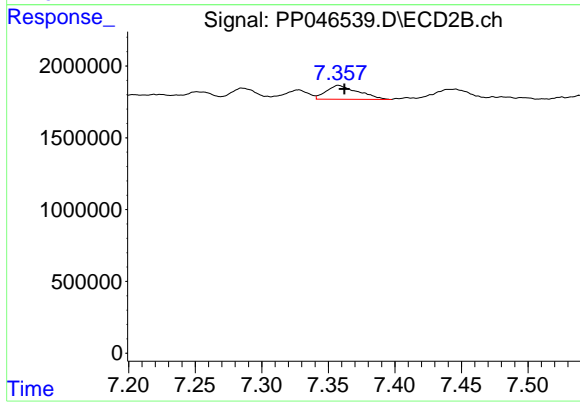
Instrument : ECD_P
 ClientSampleId : AR1254CCC500



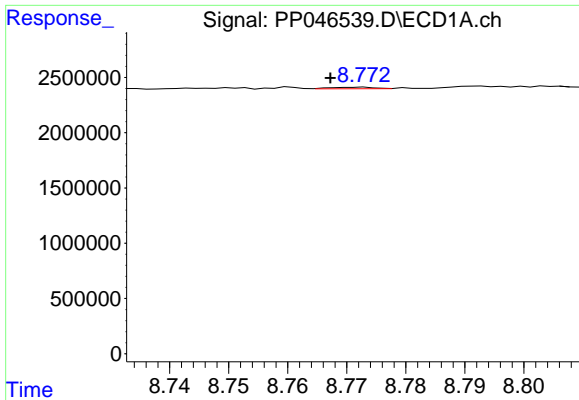
#41 AR-1268-1
 R.T.: 7.286 min
 Delta R.T.: -0.004 min
 Response: 995061
 Conc: 2.08 ng/ml



#42 AR-1268-2
 R.T.: 8.534 min
 Delta R.T.: -0.003 min
 Response: 287199
 Conc: 1.30 ng/ml



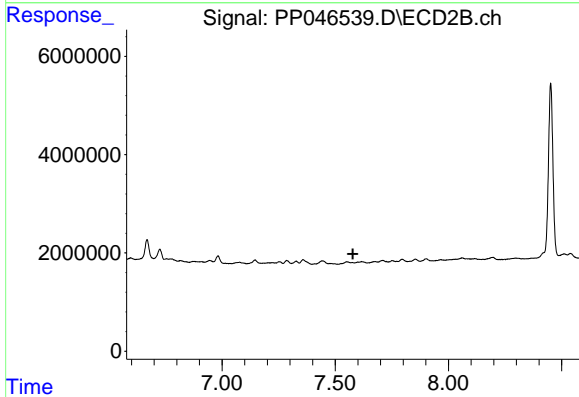
#42 AR-1268-2
 R.T.: 7.358 min
 Delta R.T.: -0.004 min
 Response: 1623668
 Conc: 3.83 ng/ml



#43 AR-1268-3

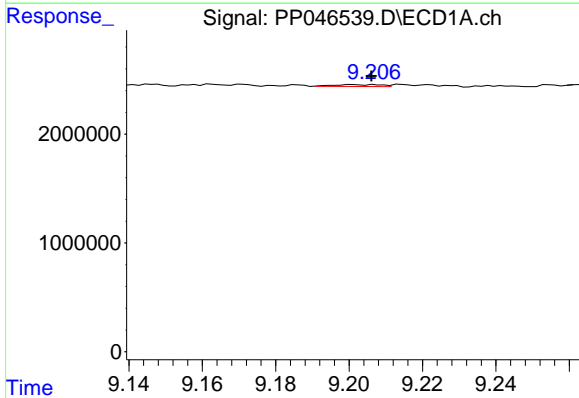
R.T.: 8.773 min
 Delta R.T.: 0.005 min
 Response: 68908
 Conc: 0.36 ng/ml

Instrument :
 ECD_P
 ClientSampleId :
 AR1254CCC500



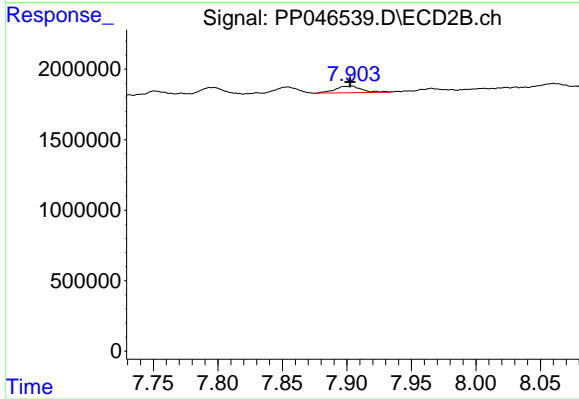
#43 AR-1268-3

R.T.: 7.576 min
 Delta R.T.: -0.002 min
 Response: -6694
 Conc: N.D.



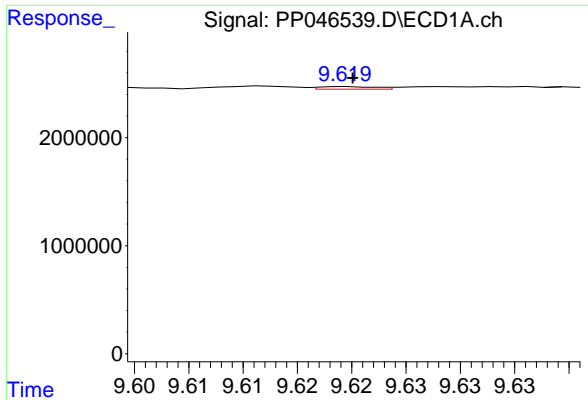
#44 AR-1268-4

R.T.: 9.201 min
 Delta R.T.: -0.005 min
 Response: 161171
 Conc: 2.09 ng/ml



#44 AR-1268-4

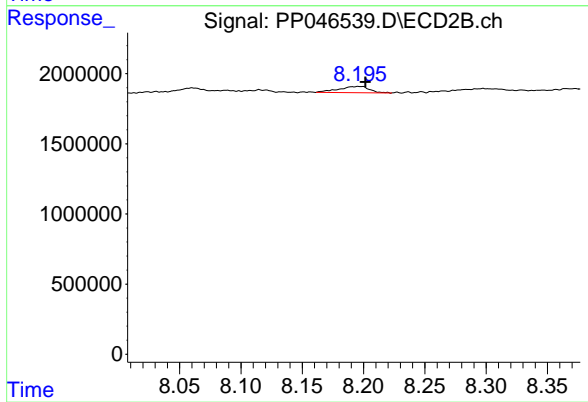
R.T.: 7.903 min
 Delta R.T.: 0.000 min
 Response: 673562
 Conc: 4.58 ng/ml



#45 AR-1268-5

R.T.: 9.620 min
Delta R.T.: 0.000 min
Response: 84825
Conc: 0.15 ng/ml

Instrument :
ECD_P
ClientSampleId :
AR1254CCC500



#45 AR-1268-5

R.T.: 8.196 min
Delta R.T.: -0.005 min
Response: 789502
Conc: 0.77 ng/ml