

Data Path : Z:\pestpcbsrv\HPCHEM1\ECD_P\Data\PP042222\
 Data File : PP046540.D
 Signal(s) : Signal #1: ECD1A.ch Signal #2: ECD2B.ch
 Acq On : 24 Apr 2022 10:13
 Operator : YP\AJ
 Sample : N2494-01
 Misc :
 ALS Vial : 75 Sample Multiplier: 1

Instrument :
 ECD_P
 ClientSampleId :
 I.BLK

Integration File signal 1: autoint1.e
 Integration File signal 2: autoint2.e
 Quant Time: Apr 24 21:19:40 2022
 Quant Method : Z:\pestpcbsrv\HPCHEM1\ECD_P\methods\PP042222.M
 Quant Title : GC EXTRACTABLES
 QLast Update : Fri Apr 22 19:00:06 2022
 Response via : Initial Calibration
 Integrator: ChemStation

Volume Inj. : 2 µl
 Signal #1 Phase : ZB-MR1 Signal #2 Phase: ZB-MR2
 Signal #1 Info : 30Mx0.32mmx 0.50µ Signal #2 Info : 30M x 0.32mm x 0.25µm

Compound	RT#1	RT#2	Resp#1	Resp#2	ng/ml	ng/ml
System Monitoring Compounds						
1) SA Tetrachlo...	3.864	3.129	45896297	65891140	19.013	20.087
2) SA Decachlor...	9.949	8.452	27425768	45470034	18.638	19.063
Target Compounds						
3) L1 AR-1016-1	5.119	4.262	133896	67874	1.778	0.591 #
4) L1 AR-1016-2	5.138	4.283	50406	395531	0.443	2.331 #
5) L1 AR-1016-3	5.203	4.468	95448	135192	1.335	1.544
6) L1 AR-1016-4	5.302	4.508	408222	9942	6.790	0.143 #
7) L1 AR-1016-5	5.618	4.737	215001	23383	4.061	0.275 #
8) L2 AR-1221-1	4.085	3.351	4440638	74603	161.019	1.689 #
9) L2 AR-1221-2	4.188	3.421f	671069	7415437	33.053	219.554 #
10) L2 AR-1221-3	4.265	3.524	53222	84483	0.816	0.850
11) L3 AR-1232-1	4.265	3.524	53222	84483	1.087	1.114
12) L3 AR-1232-2	4.821	4.283	155509	395531	6.406	5.486
13) L3 AR-1232-3	5.138	4.468	50406	135192	1.067	3.713 #
14) L3 AR-1232-4	5.302	4.554	408222	101184	16.777	3.176 #
15) L3 AR-1232-5	5.418	4.737	118378	23383	7.115	0.812 #
16) L4 AR-1242-1	5.119	4.262	133896	67874	2.112	0.688 #
17) L4 AR-1242-2	5.138	4.283	50406	395531	0.529	2.731 #
18) L4 AR-1242-3	5.203	4.468	95448	135192	1.594	1.819
19) L4 AR-1242-4	5.302	4.554	408222	101184	8.071	1.417 #
20) L4 AR-1242-5	6.118	5.105	331885	407995	6.586	4.228 #
21) L5 AR-1248-1	5.106	4.262	25643	67874	0.614	0.988 #
22) L5 AR-1248-2	5.418	4.508	118378	9942	2.003	0.106 #
23) L5 AR-1248-3	5.618	4.554	215001	101184	3.078	1.036 #
24) L5 AR-1248-4	6.069	4.737	301309	23383	3.929	0.199 #
25) L5 AR-1248-5	6.118	5.158	331885	162076	4.267	1.330 #
26) L6 AR-1254-1	6.028	5.105	38685	407995	0.666	2.114 #
27) L6 AR-1254-2	6.272	5.272	68076	97129	0.552	0.583
28) L6 AR-1254-3	6.676	5.695	250957	57609	1.897	0.231 #
29) L6 AR-1254-4	6.975	5.943	55521	174150	0.559	1.015 #
30) L6 AR-1254-5	7.448	6.407	98626	50980	1.121	0.234 #
31) L7 AR-1260-1	6.848	5.837	1883272	211584	22.316	1.330 #
32) L7 AR-1260-2	7.133	6.045	25951	51582	0.258	0.254
33) L7 AR-1260-3	7.528	6.204	118554	77749	1.463	0.455 #
34) L7 AR-1260-4	7.769	6.700f	3545893	1066503	44.518	7.338 #
35) L7 AR-1260-5	8.107	6.983	-41746	97369	N.D.	0.277 #
36) L8 AR-1262-1	7.528	6.438	118554	246272	0.981	0.997
37) L8 AR-1262-2	8.107	6.700f	-41746	1066503	N.D.	5.518 #
38) L8 AR-1262-3	8.445	7.293	195561	207340	1.457	1.277
39) L8 AR-1262-4	8.533	7.360	129449	119096	2.055	0.416 #
40) L8 AR-1262-5	9.224f	7.896	101211	34037909	1.467	259.422 #
41) L9 AR-1268-1	8.445	7.293	195561	207340	0.814	0.433 #

Data Path : Z:\pestpcbsrv\HPCHEM1\ECD_P\Data\PP042222\
 Data File : PP046540.D
 Signal(s) : Signal #1: ECD1A.ch Signal #2: ECD2B.ch
 Acq On : 24 Apr 2022 10:13
 Operator : YP\AJ
 Sample : N2494-01
 Misc :
 ALS Vial : 75 Sample Multiplier: 1

Instrument :
 ECD_P
 ClientSampleId :
 I.BLK

Integration File signal 1: autoint1.e
 Integration File signal 2: autoint2.e
 Quant Time: Apr 24 21:19:40 2022
 Quant Method : Z:\pestpcbsrv\HPCHEM1\ECD_P\methods\PP042222.M
 Quant Title : GC EXTRACTABLES
 QLast Update : Fri Apr 22 19:00:06 2022
 Response via : Initial Calibration
 Integrator: ChemStation

Volume Inj. : 2 µl
 Signal #1 Phase : ZB-MR1 Signal #2 Phase: ZB-MR2
 Signal #1 Info : 30Mx0.32mmx 0.50µ Signal #2 Info : 30M x 0.32mm x 0.25µm

	Compound	RT#1	RT#2	Resp#1	Resp#2	ng/ml	ng/ml
42)	L9 AR-1268-2	8.533	7.360	129449	119096	0.585	0.281 #
43)	L9 AR-1268-3	8.763	7.576	55595	109617	0.289	0.310
44)	L9 AR-1268-4	9.224f	7.896	101211	34037909	1.312	231.459 #
45)	L9 AR-1268-5	9.606	8.199	311723	121713	0.557	0.119 #

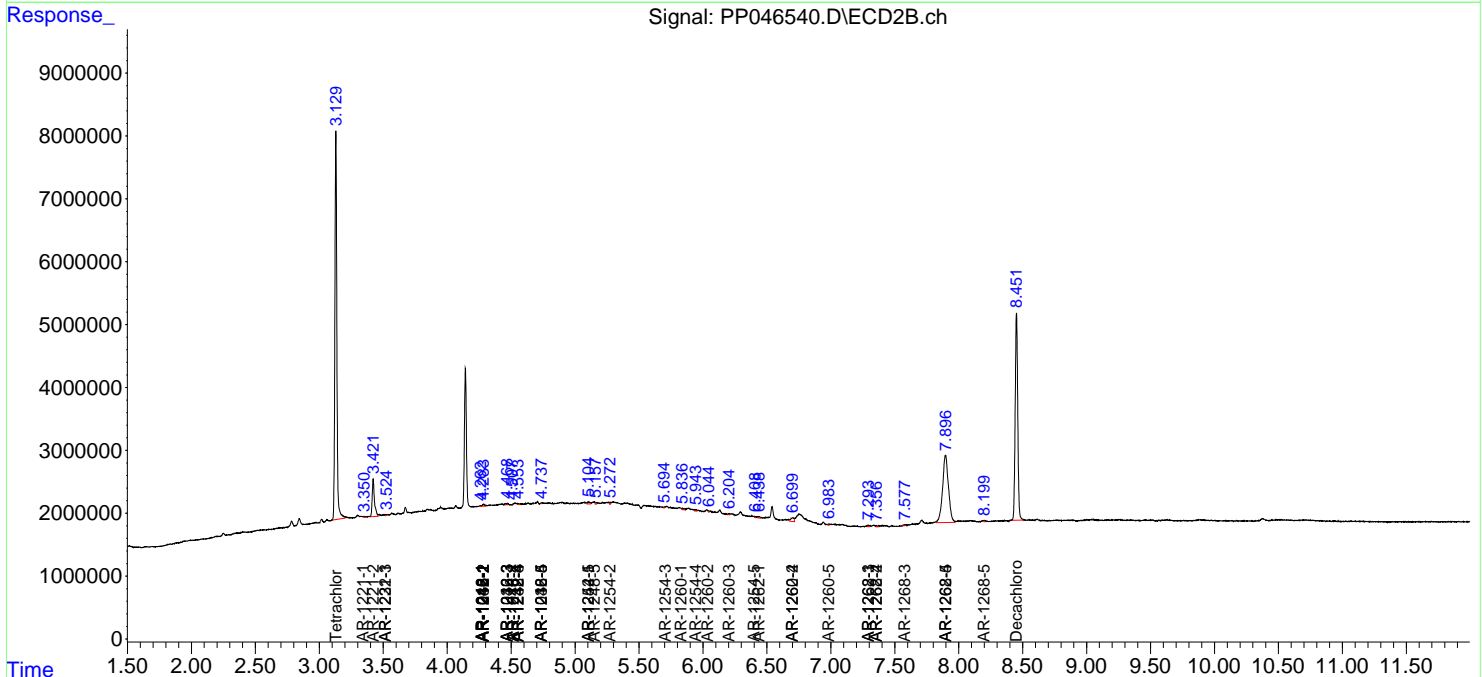
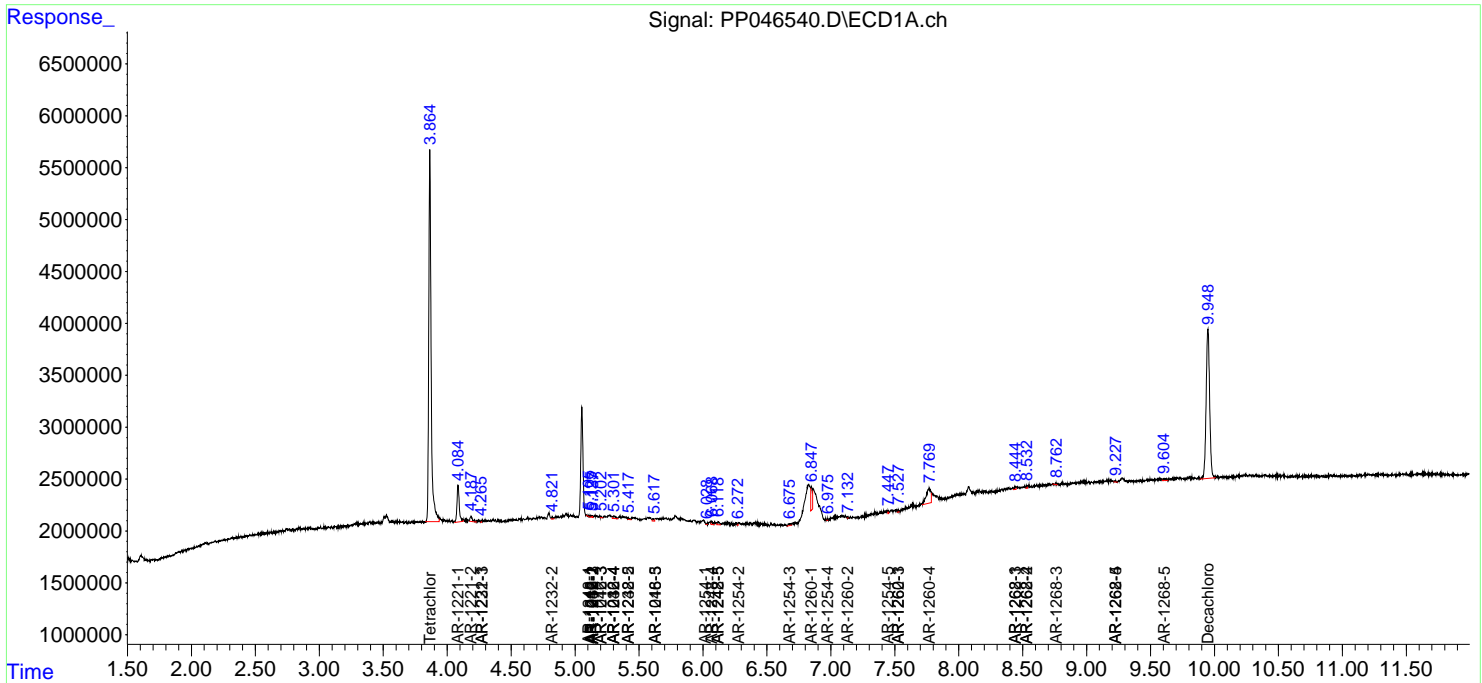
(f)=RT Delta > 1/2 Window (#)=Amounts differ by > 25% (m)=manual int.

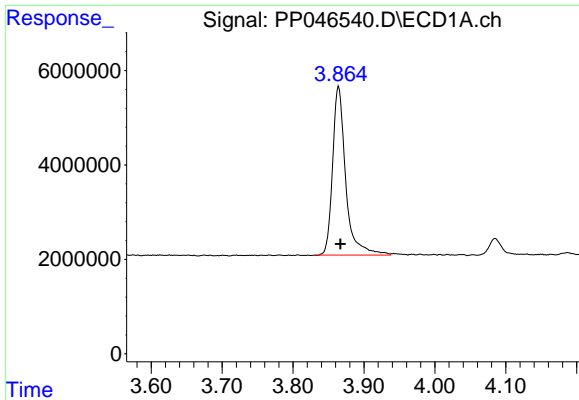
Data Path : Z:\pestpcbsrv\HPCHEM1\ECD_P\Data\PP042222\
 Data File : PP046540.D
 Signal(s) : Signal #1: ECD1A.ch Signal #2: ECD2B.ch
 Acq On : 24 Apr 2022 10:13
 Operator : YP\AJ
 Sample : N2494-01
 Misc :
 ALS Vial : 75 Sample Multiplier: 1

Instrument :
 ECD_P
 ClientSampleId :
 I.BLK

Integration File signal 1: autoint1.e
 Integration File signal 2: autoint2.e
 Quant Time: Apr 24 21:19:40 2022
 Quant Method : Z:\pestpcbsrv\HPCHEM1\ECD_P\methods\PP042222.M
 Quant Title : GC EXTRACTABLES
 QLast Update : Fri Apr 22 19:00:06 2022
 Response via : Initial Calibration
 Integrator: ChemStation

Volume Inj. : 2 µl
 Signal #1 Phase : ZB-MR1 Signal #2 Phase: ZB-MR2
 Signal #1 Info : 30Mx0.32mmx 0.50µ Signal #2 Info : 30M x 0.32mm x 0.25µm

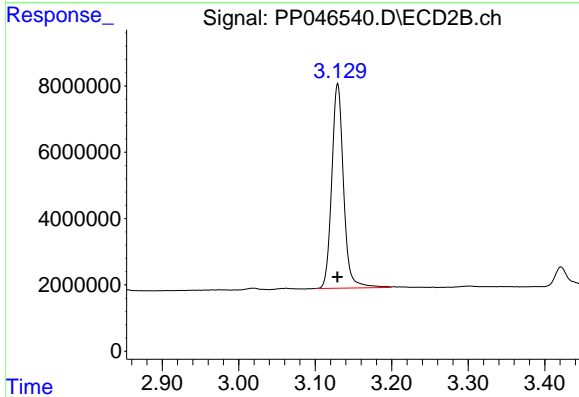




#1 Tetrachloro-m-xylene

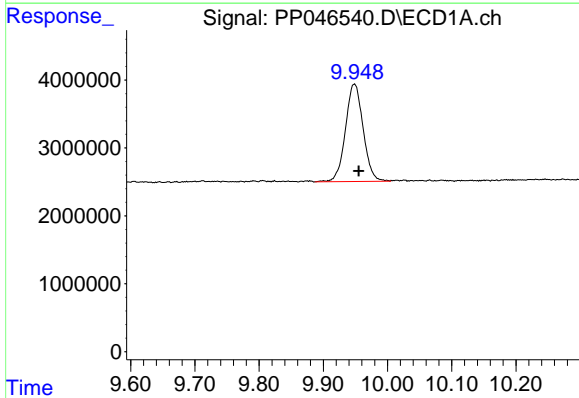
R.T.: 3.864 min
 Delta R.T.: -0.003 min
 Response: 45896297
 Conc: 19.01 ng/ml

Instrument :
 ECD_P
 ClientSampleId :
 I.BLK



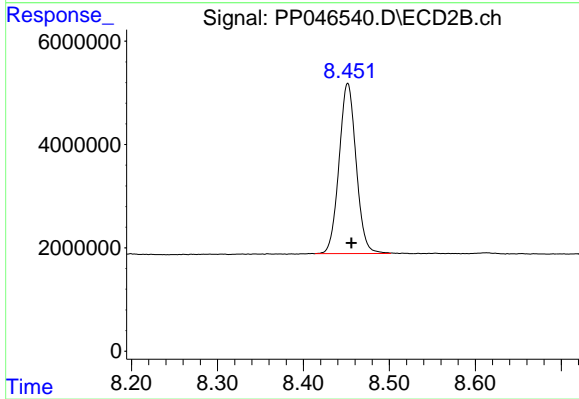
#1 Tetrachloro-m-xylene

R.T.: 3.129 min
 Delta R.T.: 0.000 min
 Response: 65891140
 Conc: 20.09 ng/ml



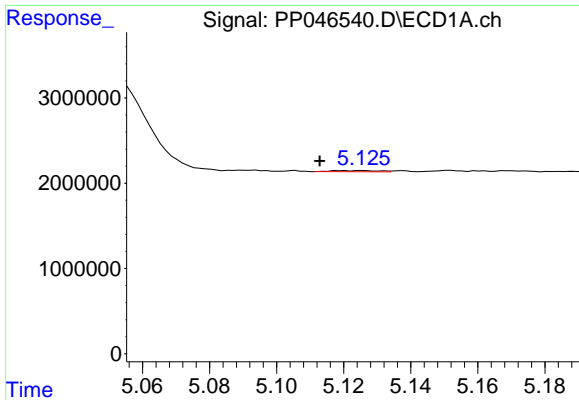
#2 Decachlorobiphenyl

R.T.: 9.949 min
 Delta R.T.: -0.006 min
 Response: 27425768
 Conc: 18.64 ng/ml



#2 Decachlorobiphenyl

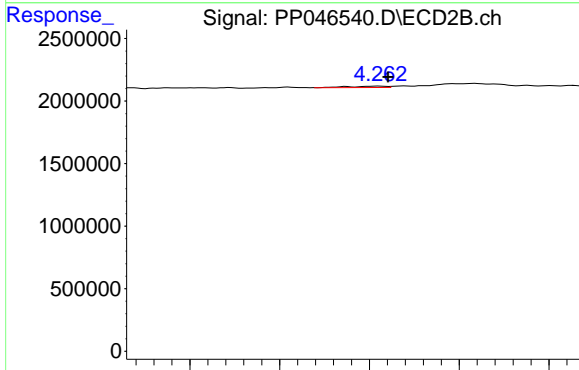
R.T.: 8.452 min
 Delta R.T.: -0.004 min
 Response: 45470034
 Conc: 19.06 ng/ml



#3 AR-1016-1

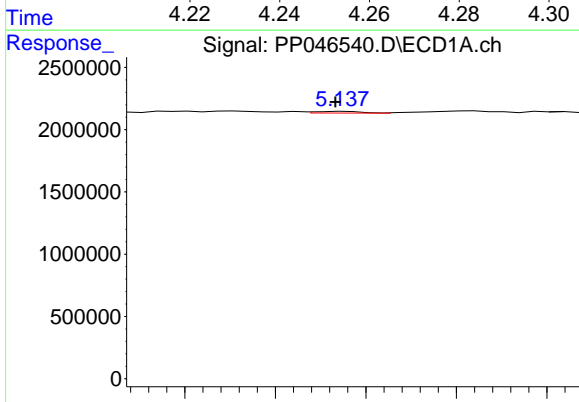
R.T.: 5.119 min
 Delta R.T.: 0.006 min
 Response: 133896
 Conc: 1.78 ng/ml

Instrument :
 ECD_P
 ClientSampleId :
 I.BLK



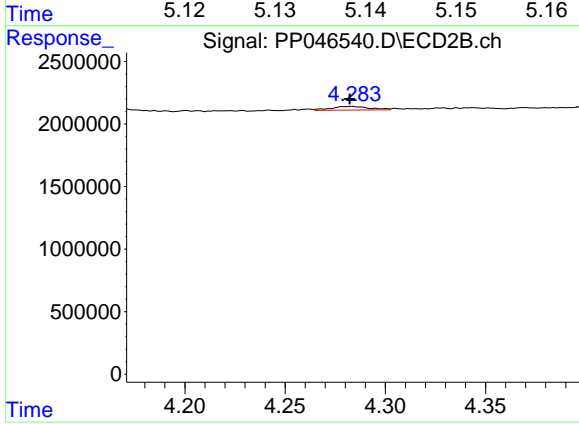
#3 AR-1016-1

R.T.: 4.262 min
 Delta R.T.: -0.002 min
 Response: 67874
 Conc: 0.59 ng/ml



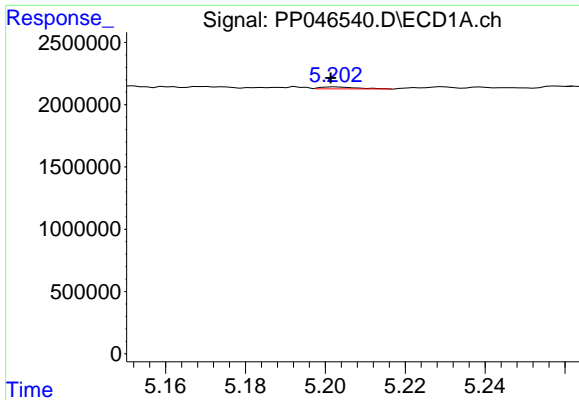
#4 AR-1016-2

R.T.: 5.138 min
 Delta R.T.: 0.000 min
 Response: 50406
 Conc: 0.44 ng/ml



#4 AR-1016-2

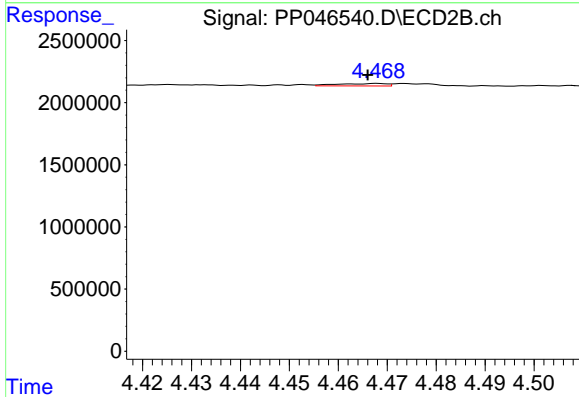
R.T.: 4.283 min
 Delta R.T.: 0.001 min
 Response: 395531
 Conc: 2.33 ng/ml



#5 AR-1016-3

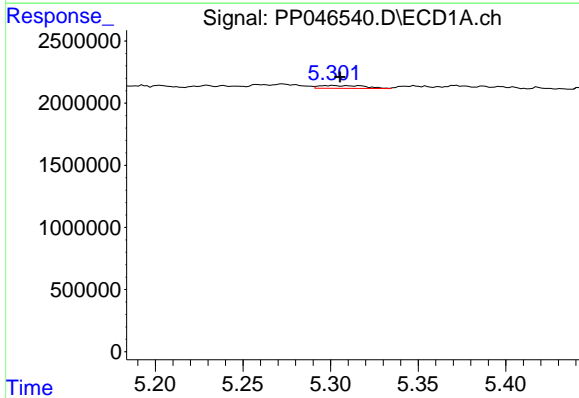
R.T.: 5.203 min
 Delta R.T.: 0.001 min
 Response: 95448
 Conc: 1.34 ng/ml

Instrument :
 ECD_P
 ClientSampleId :
 I.BLK



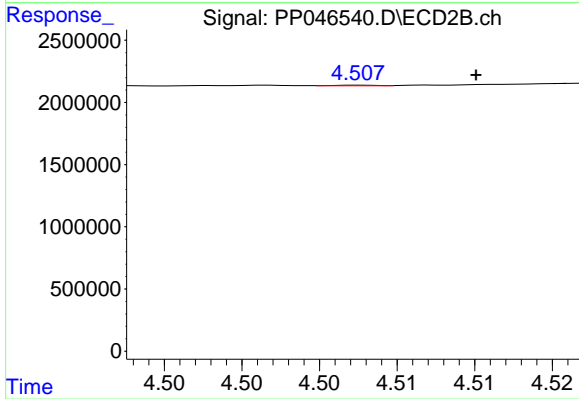
#5 AR-1016-3

R.T.: 4.468 min
 Delta R.T.: 0.002 min
 Response: 135192
 Conc: 1.54 ng/ml



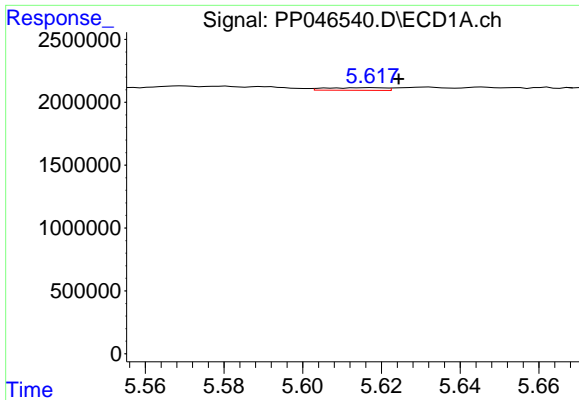
#6 AR-1016-4

R.T.: 5.302 min
 Delta R.T.: -0.004 min
 Response: 408222
 Conc: 6.79 ng/ml



#6 AR-1016-4

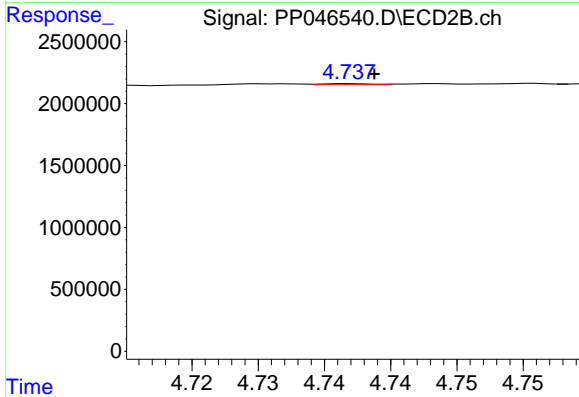
R.T.: 4.508 min
 Delta R.T.: -0.007 min
 Response: 9942
 Conc: 0.14 ng/ml



#7 AR-1016-5

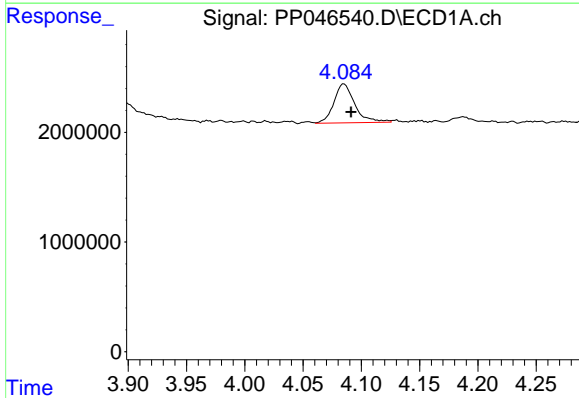
R.T.: 5.618 min
 Delta R.T.: -0.007 min
 Response: 215001
 Conc: 4.06 ng/ml

Instrument :
 ECD_P
 ClientSampleId :
 I.BLK



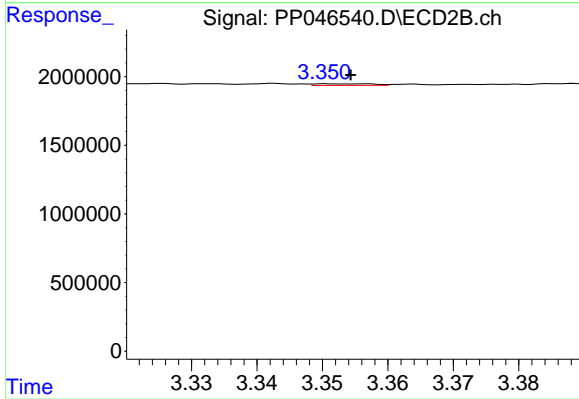
#7 AR-1016-5

R.T.: 4.737 min
 Delta R.T.: -0.002 min
 Response: 23383
 Conc: 0.27 ng/ml



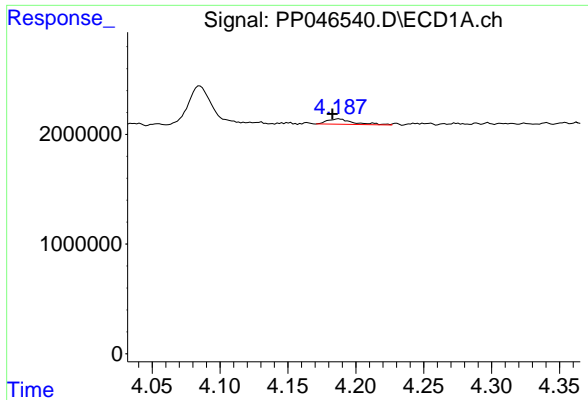
#8 AR-1221-1

R.T.: 4.085 min
 Delta R.T.: -0.006 min
 Response: 4440638
 Conc: 161.02 ng/ml



#8 AR-1221-1

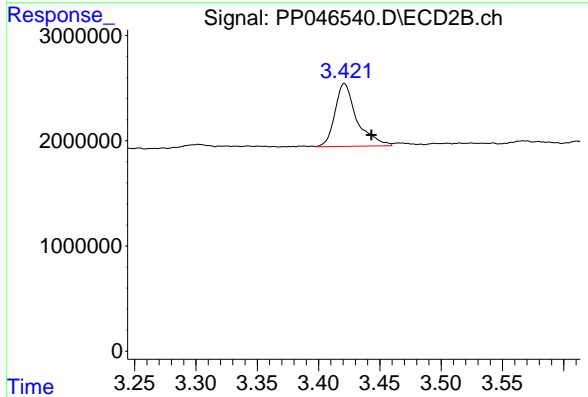
R.T.: 3.351 min
 Delta R.T.: -0.004 min
 Response: 74603
 Conc: 1.69 ng/ml



#9 AR-1221-2

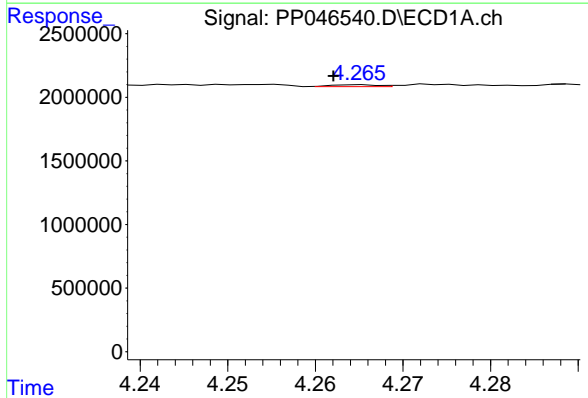
R.T.: 4.188 min
 Delta R.T.: 0.005 min
 Response: 671069
 Conc: 33.05 ng/ml

Instrument :
 ECD_P
 ClientSampleId :
 I.BLK



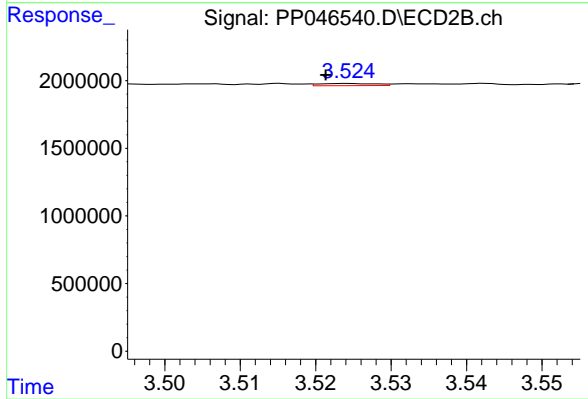
#9 AR-1221-2

R.T.: 3.421 min
 Delta R.T.: -0.022 min
 Response: 7415437
 Conc: 219.55 ng/ml



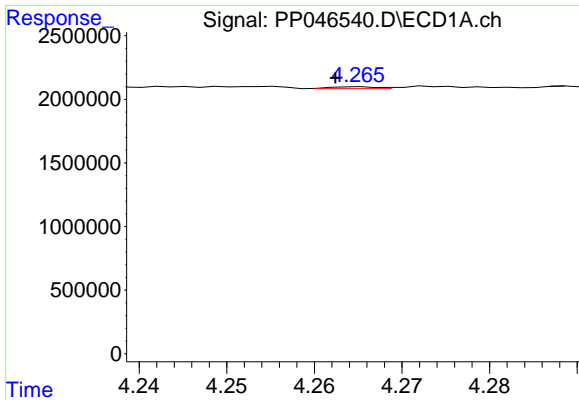
#10 AR-1221-3

R.T.: 4.265 min
 Delta R.T.: 0.003 min
 Response: 53222
 Conc: 0.82 ng/ml



#10 AR-1221-3

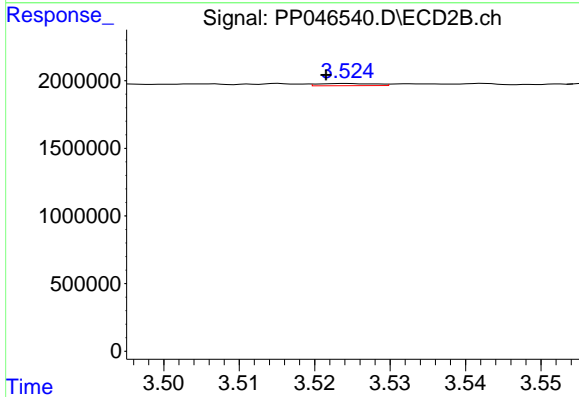
R.T.: 3.524 min
 Delta R.T.: 0.003 min
 Response: 84483
 Conc: 0.85 ng/ml



#11 AR-1232-1

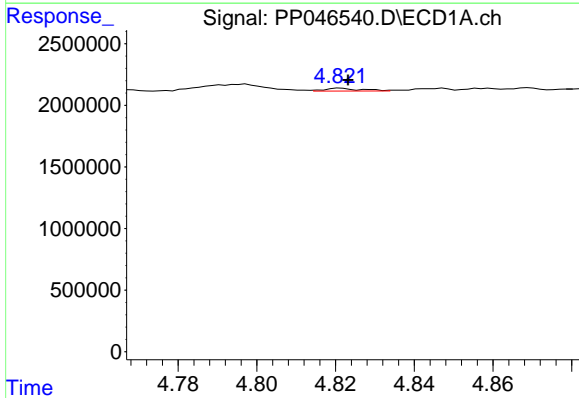
R.T.: 4.265 min
 Delta R.T.: 0.003 min
 Response: 53222
 Conc: 1.09 ng/ml

Instrument :
 ECD_P
 ClientSampleId :
 I.BLK



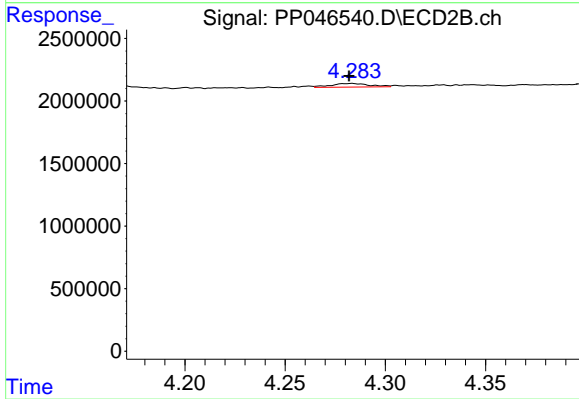
#11 AR-1232-1

R.T.: 3.524 min
 Delta R.T.: 0.003 min
 Response: 84483
 Conc: 1.11 ng/ml



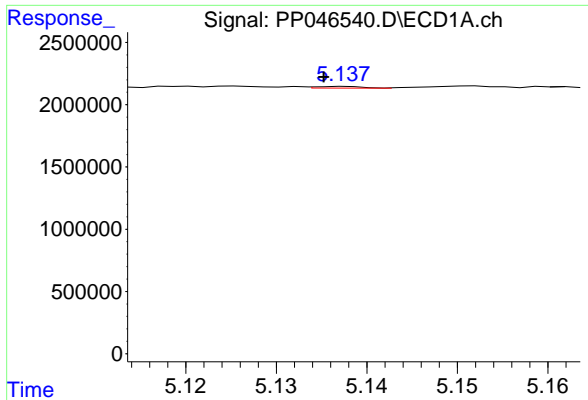
#12 AR-1232-2

R.T.: 4.821 min
 Delta R.T.: -0.002 min
 Response: 155509
 Conc: 6.41 ng/ml



#12 AR-1232-2

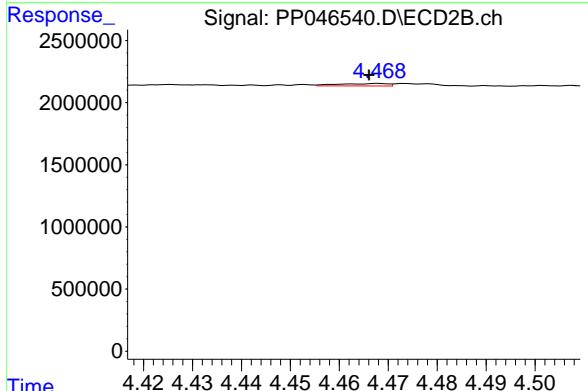
R.T.: 4.283 min
 Delta R.T.: 0.002 min
 Response: 395531
 Conc: 5.49 ng/ml



#13 AR-1232-3

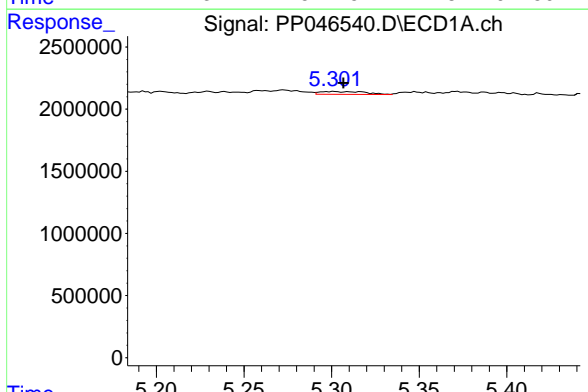
R.T.: 5.138 min
 Delta R.T.: 0.002 min
 Response: 50406
 Conc: 1.07 ng/ml

Instrument :
 ECD_P
 ClientSampleId :
 I.BLK



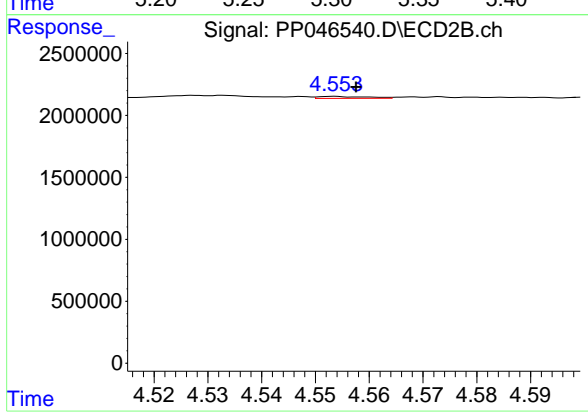
#13 AR-1232-3

R.T.: 4.468 min
 Delta R.T.: 0.002 min
 Response: 135192
 Conc: 3.71 ng/ml



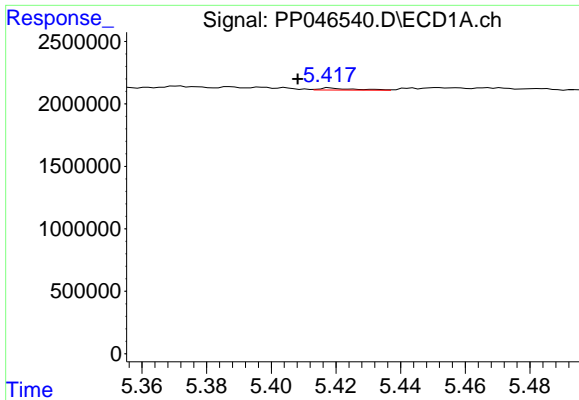
#14 AR-1232-4

R.T.: 5.302 min
 Delta R.T.: -0.005 min
 Response: 408222
 Conc: 16.78 ng/ml



#14 AR-1232-4

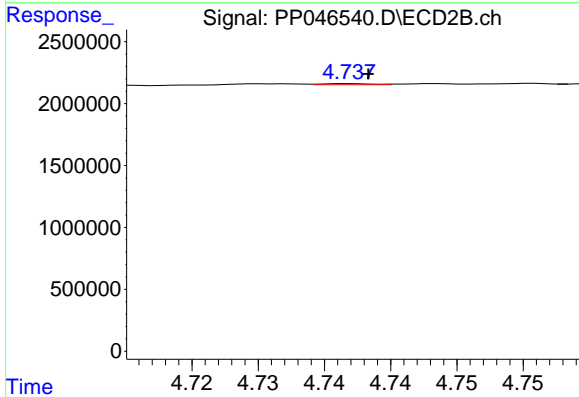
R.T.: 4.554 min
 Delta R.T.: -0.004 min
 Response: 101184
 Conc: 3.18 ng/ml



#15 AR-1232-5

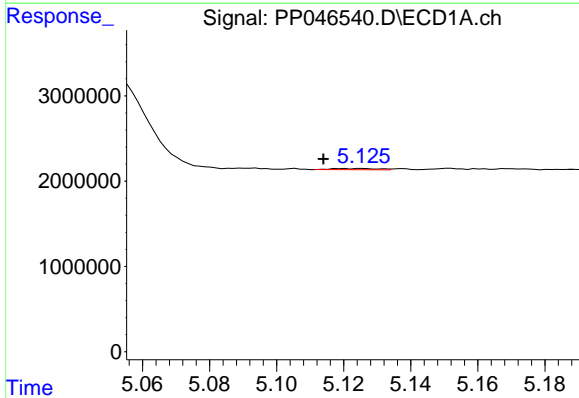
R.T.: 5.418 min
 Delta R.T.: 0.010 min
 Response: 118378
 Conc: 7.11 ng/ml

Instrument :
 ECD_P
 ClientSampleId :
 I.BLK



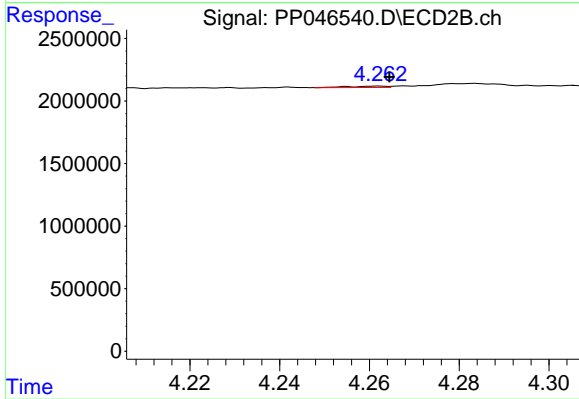
#15 AR-1232-5

R.T.: 4.737 min
 Delta R.T.: -0.001 min
 Response: 23383
 Conc: 0.81 ng/ml



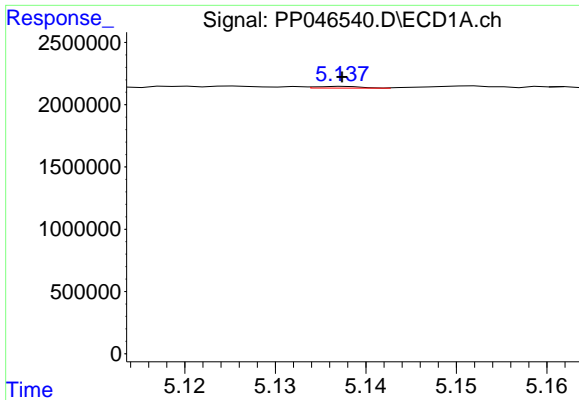
#16 AR-1242-1

R.T.: 5.119 min
 Delta R.T.: 0.005 min
 Response: 133896
 Conc: 2.11 ng/ml



#16 AR-1242-1

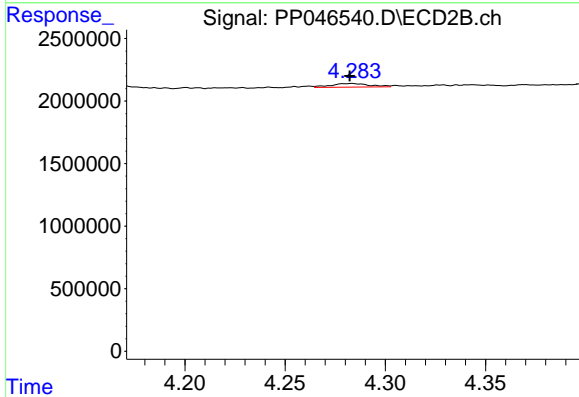
R.T.: 4.262 min
 Delta R.T.: -0.002 min
 Response: 67874
 Conc: 0.69 ng/ml



#17 AR-1242-2

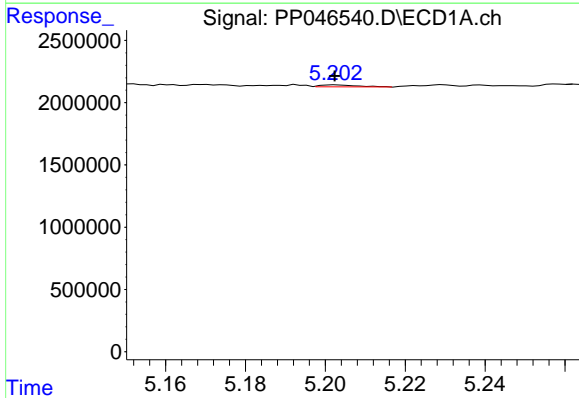
R.T.: 5.138 min
 Delta R.T.: 0.000 min
 Response: 50406
 Conc: 0.53 ng/ml

Instrument :
 ECD_P
 ClientSampleId :
 I.BLK



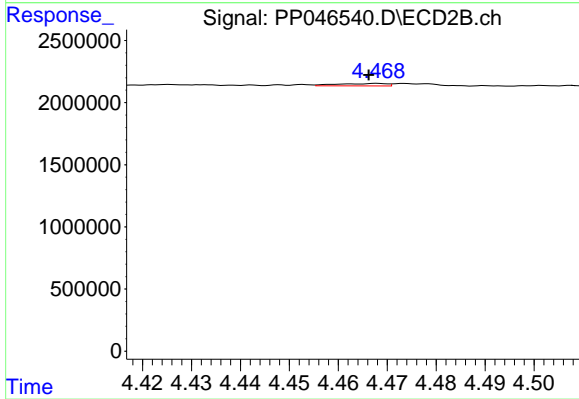
#17 AR-1242-2

R.T.: 4.283 min
 Delta R.T.: 0.001 min
 Response: 395531
 Conc: 2.73 ng/ml



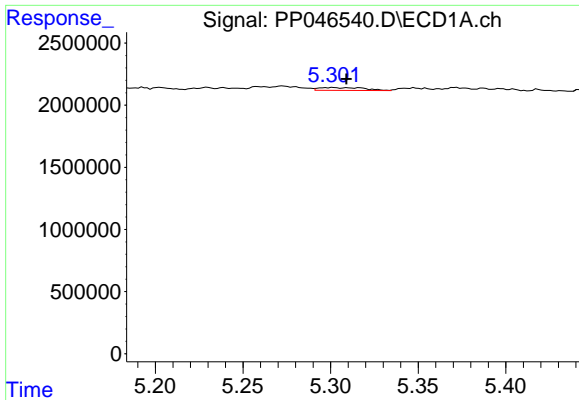
#18 AR-1242-3

R.T.: 5.203 min
 Delta R.T.: 0.000 min
 Response: 95448
 Conc: 1.59 ng/ml



#18 AR-1242-3

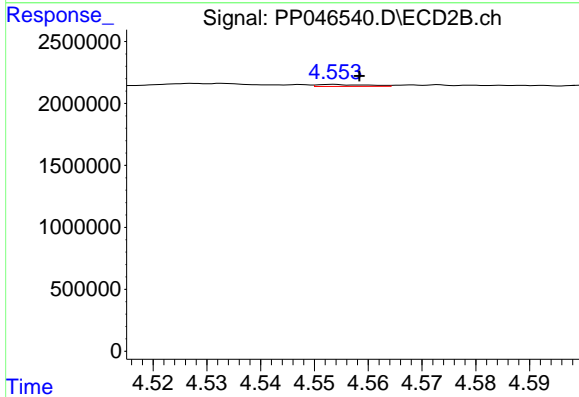
R.T.: 4.468 min
 Delta R.T.: 0.002 min
 Response: 135192
 Conc: 1.82 ng/ml



#19 AR-1242-4

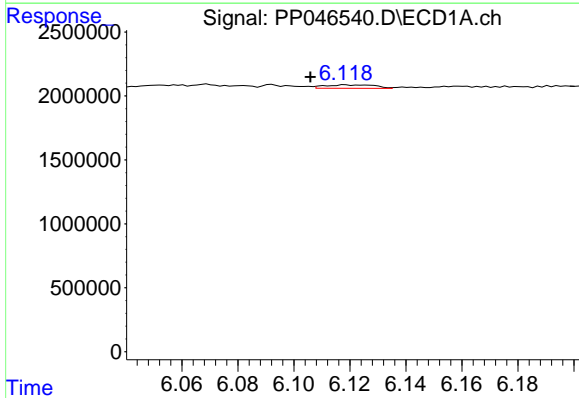
R.T.: 5.302 min
 Delta R.T.: -0.007 min
 Response: 408222
 Conc: 8.07 ng/ml

Instrument :
 ECD_P
 ClientSampleId :
 I.BLK



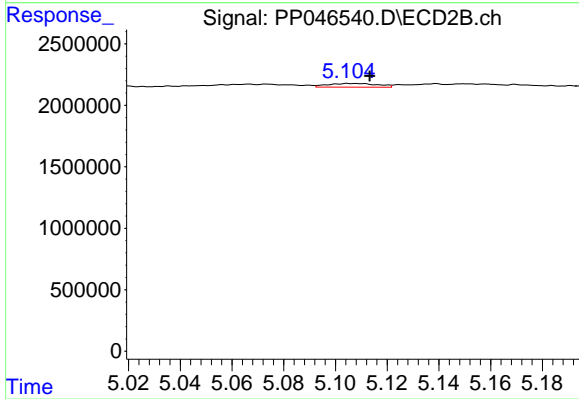
#19 AR-1242-4

R.T.: 4.554 min
 Delta R.T.: -0.005 min
 Response: 101184
 Conc: 1.42 ng/ml



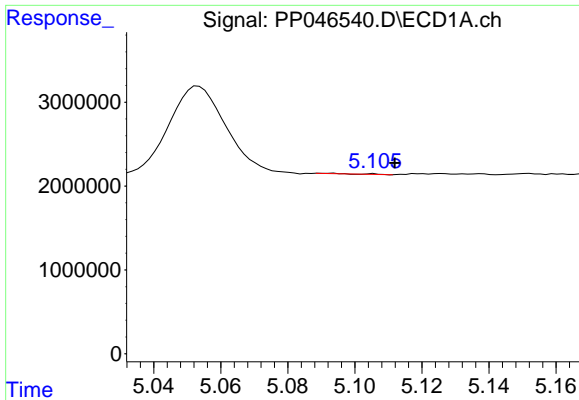
#20 AR-1242-5

R.T.: 6.118 min
 Delta R.T.: 0.013 min
 Response: 331885
 Conc: 6.59 ng/ml



#20 AR-1242-5

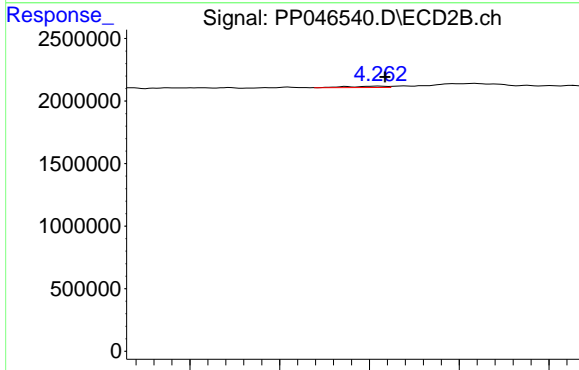
R.T.: 5.105 min
 Delta R.T.: -0.009 min
 Response: 407995
 Conc: 4.23 ng/ml



#21 AR-1248-1

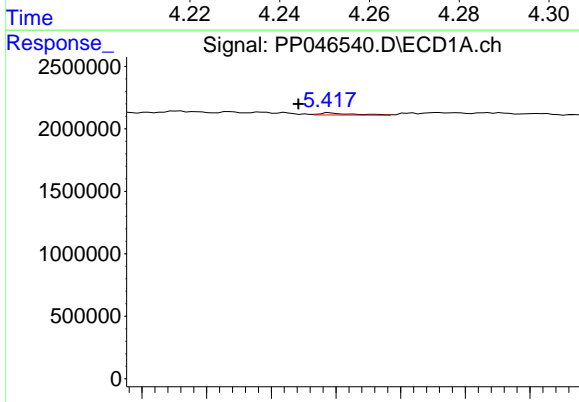
R.T.: 5.106 min
 Delta R.T.: -0.006 min
 Response: 25643
 Conc: 0.61 ng/ml

Instrument :
 ECD_P
 ClientSampleId :
 I.BLK



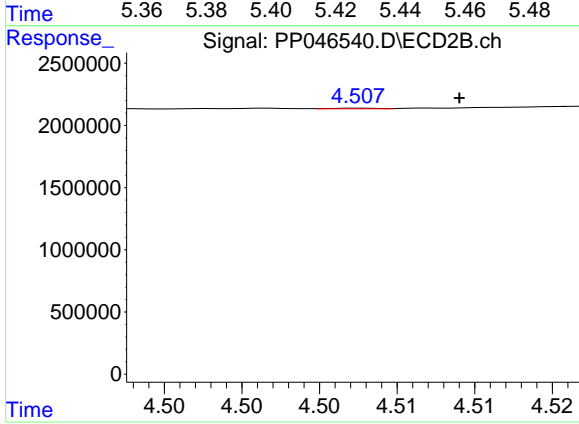
#21 AR-1248-1

R.T.: 4.262 min
 Delta R.T.: -0.001 min
 Response: 67874
 Conc: 0.99 ng/ml



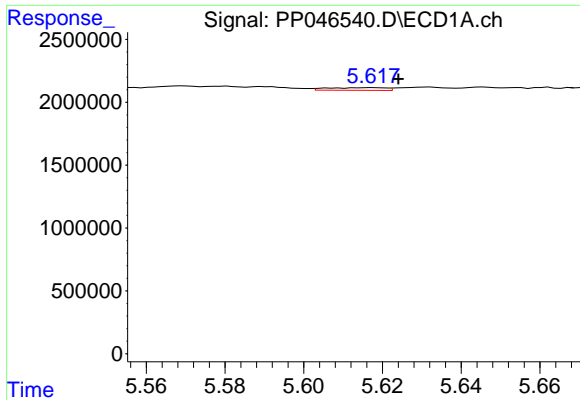
#22 AR-1248-2

R.T.: 5.418 min
 Delta R.T.: 0.010 min
 Response: 118378
 Conc: 2.00 ng/ml



#22 AR-1248-2

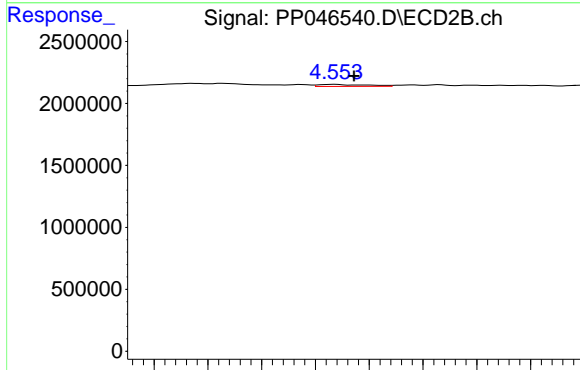
R.T.: 4.508 min
 Delta R.T.: -0.006 min
 Response: 9942
 Conc: 0.11 ng/ml



#23 AR-1248-3

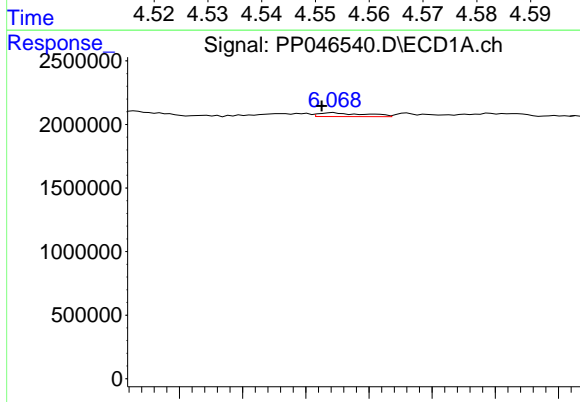
R.T.: 5.618 min
 Delta R.T.: -0.006 min
 Response: 215001
 Conc: 3.08 ng/ml

Instrument :
 ECD_P
 ClientSampleId :
 I.BLK



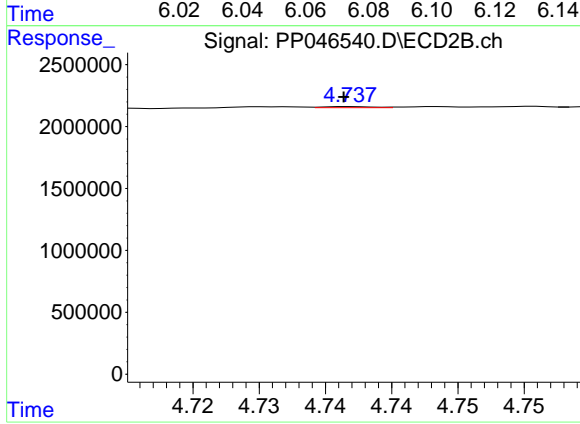
#23 AR-1248-3

R.T.: 4.554 min
 Delta R.T.: -0.004 min
 Response: 101184
 Conc: 1.04 ng/ml



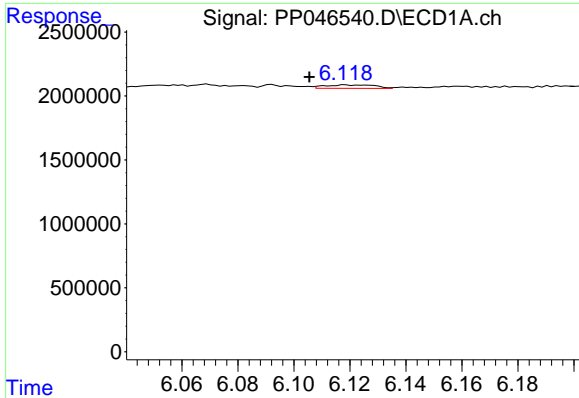
#24 AR-1248-4

R.T.: 6.069 min
 Delta R.T.: 0.004 min
 Response: 301309
 Conc: 3.93 ng/ml



#24 AR-1248-4

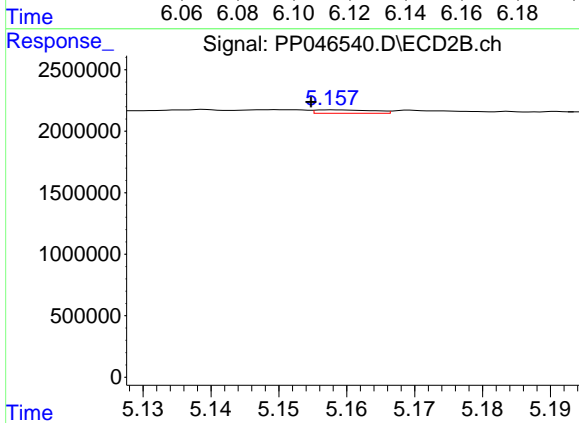
R.T.: 4.737 min
 Delta R.T.: 0.000 min
 Response: 23383
 Conc: 0.20 ng/ml



#25 AR-1248-5

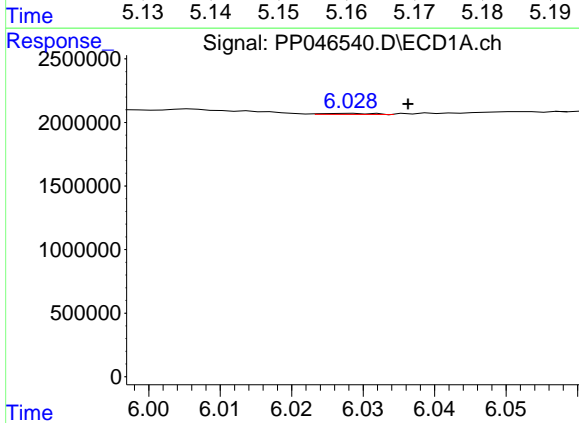
R.T.: 6.118 min
 Delta R.T.: 0.013 min
 Response: 331885
 Conc: 4.27 ng/ml

Instrument :
 ECD_P
 ClientSampleId :
 I.BLK



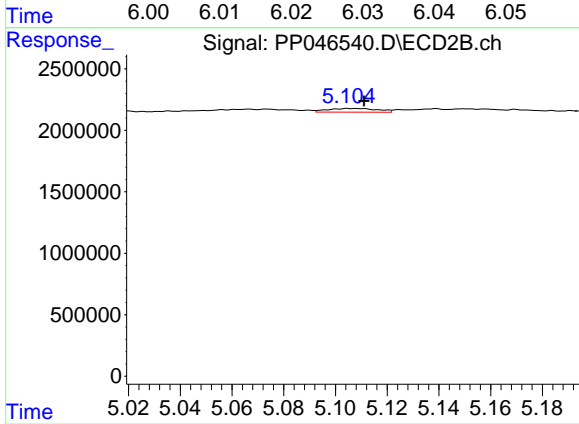
#25 AR-1248-5

R.T.: 5.158 min
 Delta R.T.: 0.003 min
 Response: 162076
 Conc: 1.33 ng/ml



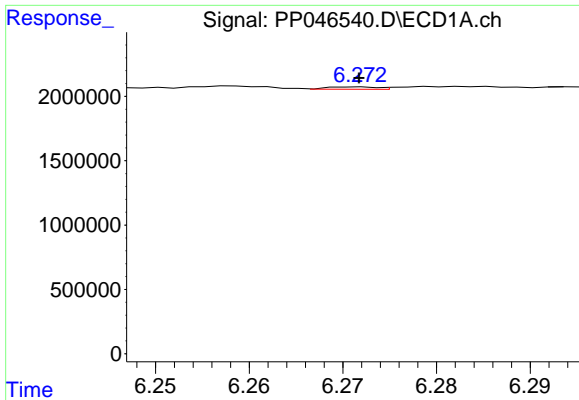
#26 AR-1254-1

R.T.: 6.028 min
 Delta R.T.: -0.009 min
 Response: 38685
 Conc: 0.67 ng/ml



#26 AR-1254-1

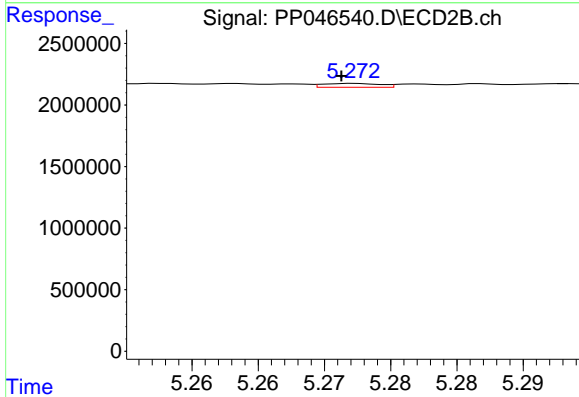
R.T.: 5.105 min
 Delta R.T.: -0.007 min
 Response: 407995
 Conc: 2.11 ng/ml



#27 AR-1254-2

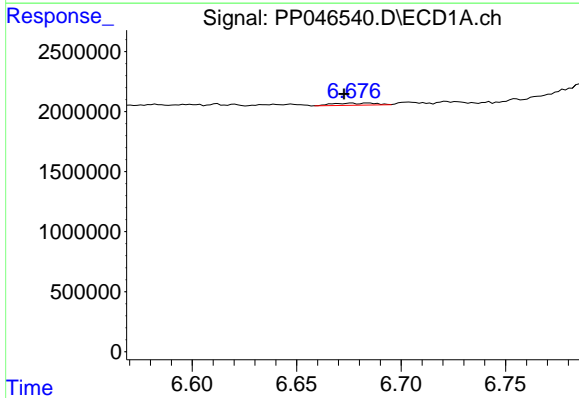
R.T.: 6.272 min
 Delta R.T.: 0.000 min
 Response: 68076
 Conc: 0.55 ng/ml

Instrument :
 ECD_P
 ClientSampleId :
 I.BLK



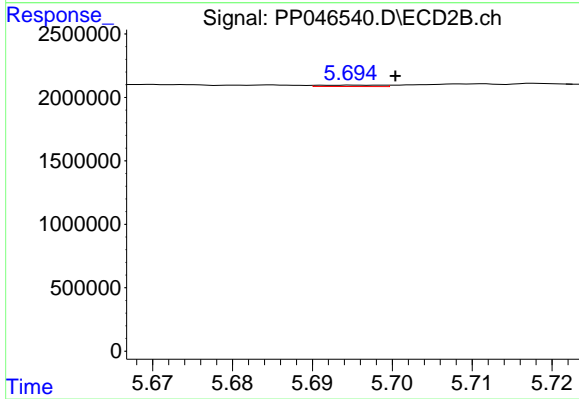
#27 AR-1254-2

R.T.: 5.272 min
 Delta R.T.: 0.001 min
 Response: 97129
 Conc: 0.58 ng/ml



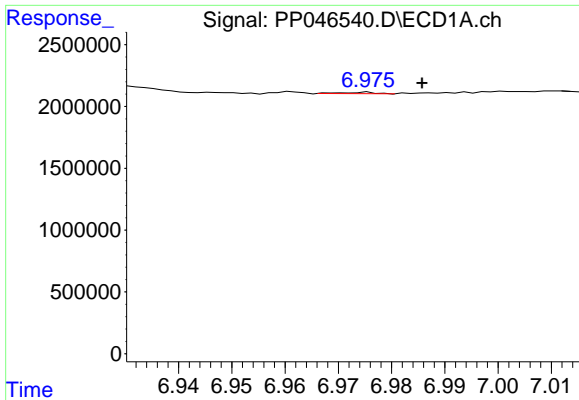
#28 AR-1254-3

R.T.: 6.676 min
 Delta R.T.: 0.004 min
 Response: 250957
 Conc: 1.90 ng/ml



#28 AR-1254-3

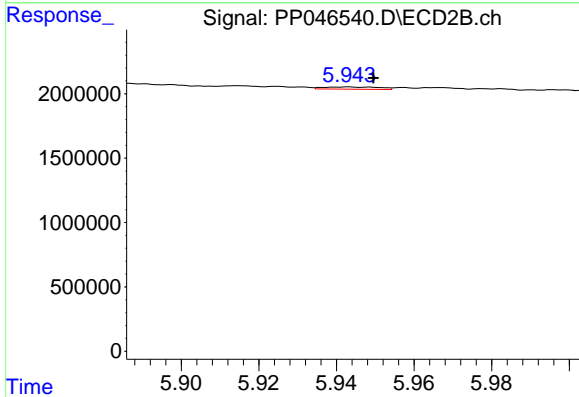
R.T.: 5.695 min
 Delta R.T.: -0.005 min
 Response: 57609
 Conc: 0.23 ng/ml



#29 AR-1254-4

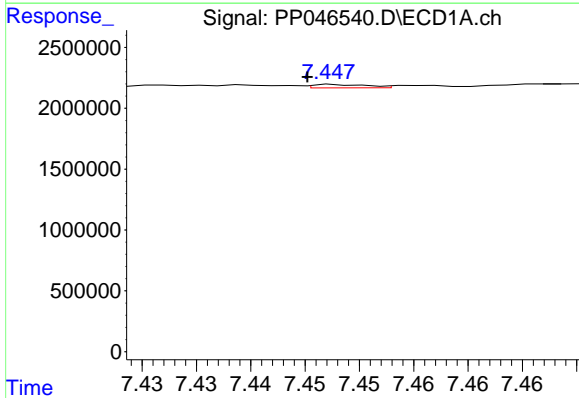
R.T.: 6.975 min
 Delta R.T.: -0.010 min
 Response: 55521
 Conc: 0.56 ng/ml

Instrument :
 ECD_P
 ClientSampleId :
 I.BLK



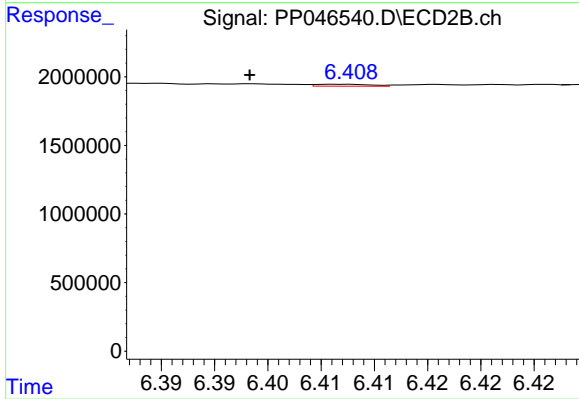
#29 AR-1254-4

R.T.: 5.943 min
 Delta R.T.: -0.006 min
 Response: 174150
 Conc: 1.02 ng/ml



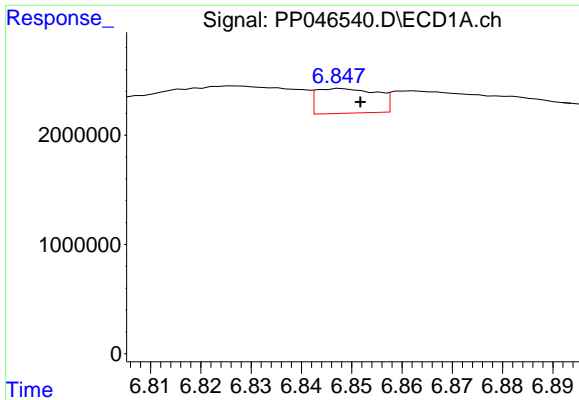
#30 AR-1254-5

R.T.: 7.448 min
 Delta R.T.: 0.003 min
 Response: 98626
 Conc: 1.12 ng/ml



#30 AR-1254-5

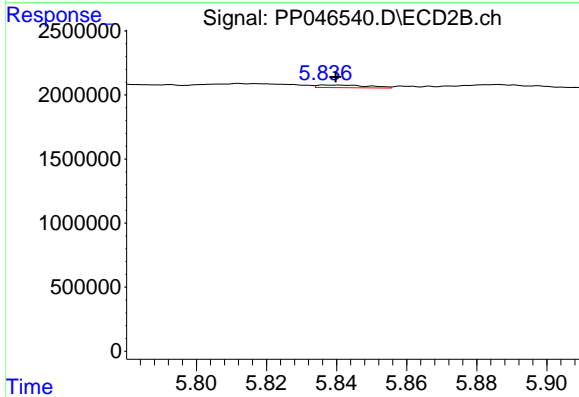
R.T.: 6.407 min
 Delta R.T.: 0.009 min
 Response: 50980
 Conc: 0.23 ng/ml



#31 AR-1260-1

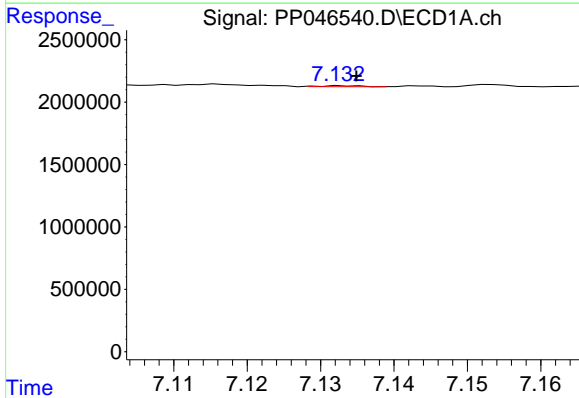
R.T.: 6.848 min
 Delta R.T.: -0.004 min
 Response: 1883272
 Conc: 22.32 ng/ml

Instrument :
 ECD_P
 ClientSampleId :
 I.BLK



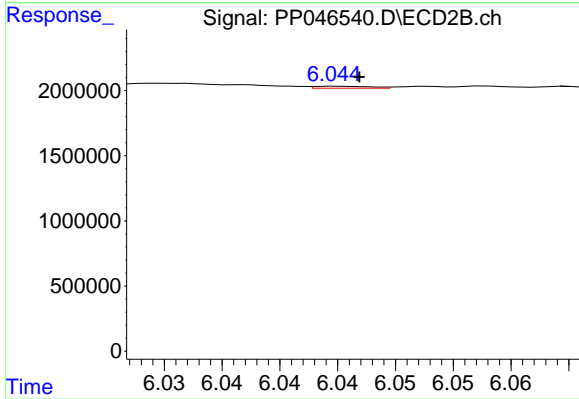
#31 AR-1260-1

R.T.: 5.837 min
 Delta R.T.: -0.003 min
 Response: 211584
 Conc: 1.33 ng/ml



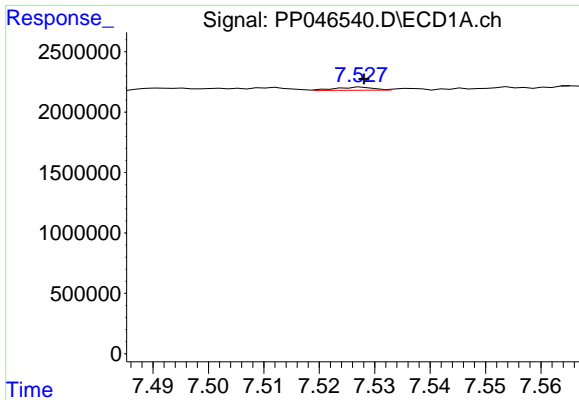
#32 AR-1260-2

R.T.: 7.133 min
 Delta R.T.: -0.002 min
 Response: 25951
 Conc: 0.26 ng/ml



#32 AR-1260-2

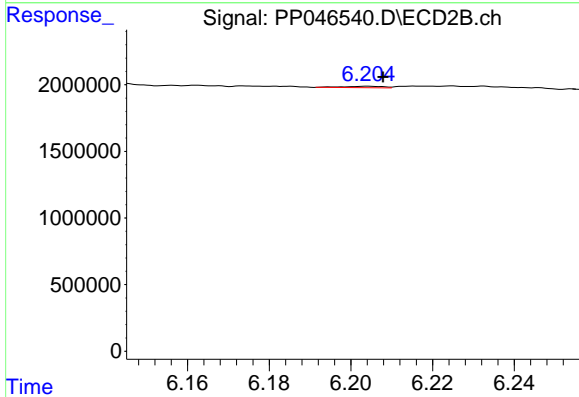
R.T.: 6.045 min
 Delta R.T.: -0.002 min
 Response: 51582
 Conc: 0.25 ng/ml



#33 AR-1260-3

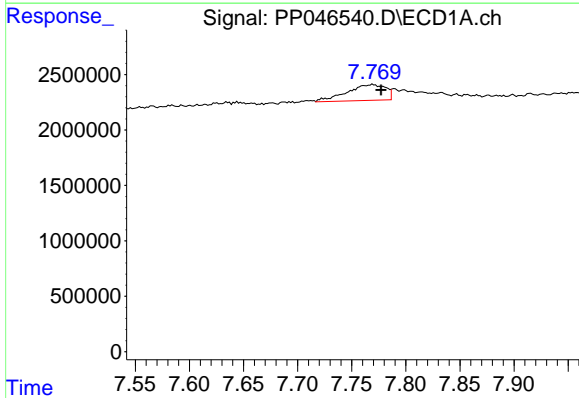
R.T.: 7.528 min
 Delta R.T.: 0.000 min
 Response: 118554
 Conc: 1.46 ng/ml

Instrument :
 ECD_P
 ClientSampleId :
 I.BLK



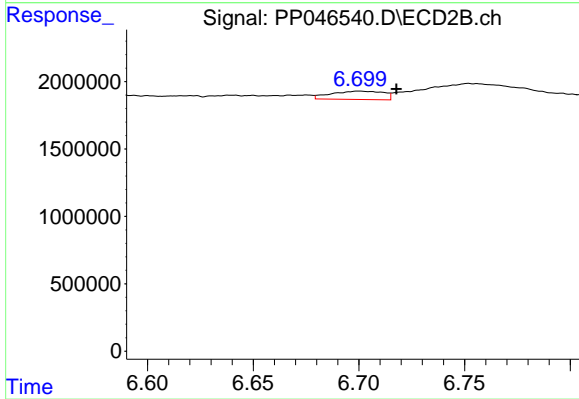
#33 AR-1260-3

R.T.: 6.204 min
 Delta R.T.: -0.004 min
 Response: 77749
 Conc: 0.46 ng/ml



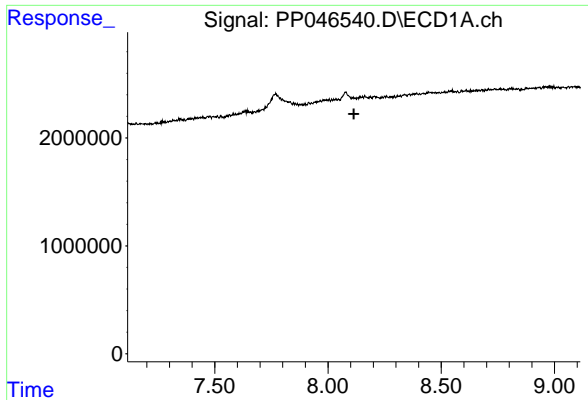
#34 AR-1260-4

R.T.: 7.769 min
 Delta R.T.: -0.008 min
 Response: 3545893
 Conc: 44.52 ng/ml



#34 AR-1260-4

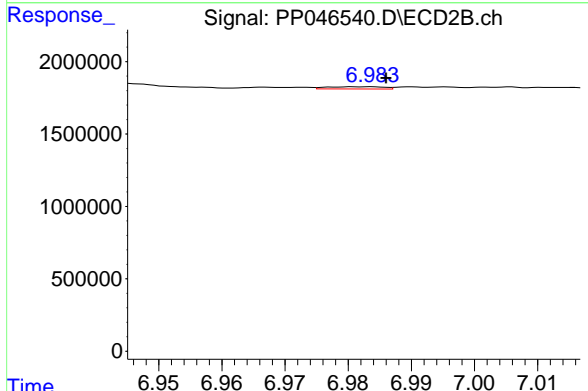
R.T.: 6.700 min
 Delta R.T.: -0.018 min
 Response: 1066503
 Conc: 7.34 ng/ml



#35 AR-1260-5

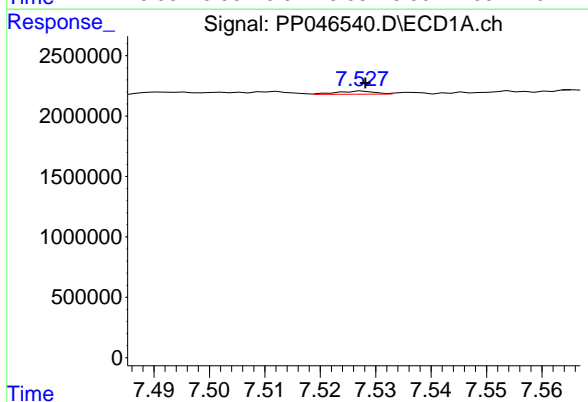
R.T.: 8.107 min
 Delta R.T.: -0.008 min
 Response: -41746
 Conc: N.D.

Instrument :
 ECD_P
 ClientSampleId :
 I.BLK



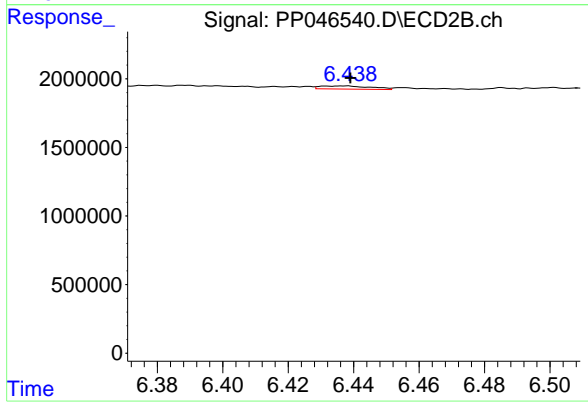
#35 AR-1260-5

R.T.: 6.983 min
 Delta R.T.: -0.003 min
 Response: 97369
 Conc: 0.28 ng/ml



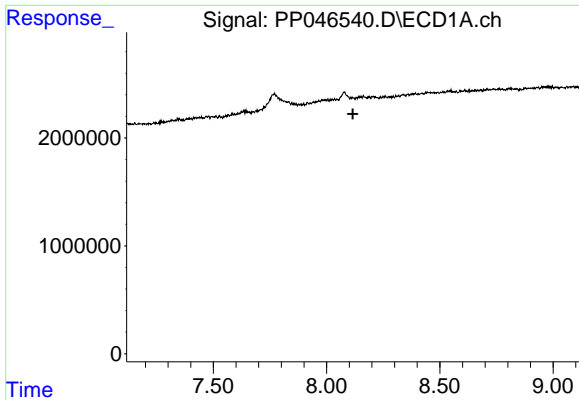
#36 AR-1262-1

R.T.: 7.528 min
 Delta R.T.: 0.000 min
 Response: 118554
 Conc: 0.98 ng/ml



#36 AR-1262-1

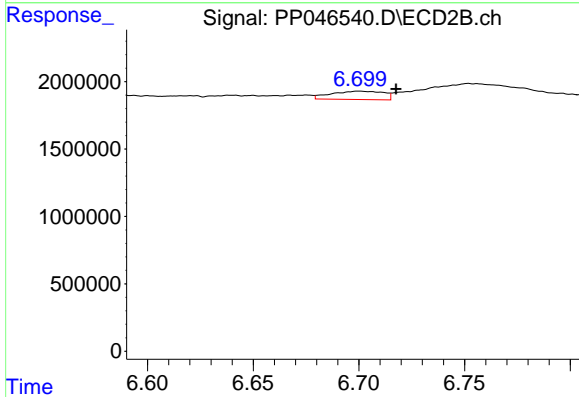
R.T.: 6.438 min
 Delta R.T.: 0.000 min
 Response: 246272
 Conc: 1.00 ng/ml



#37 AR-1262-2

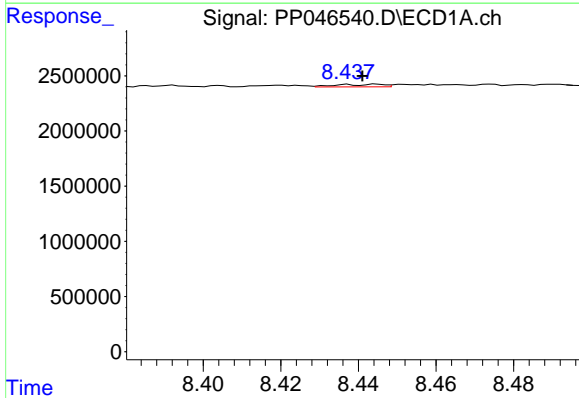
R.T.: 8.107 min
 Delta R.T.: -0.009 min
 Response: -41746
 Conc: N.D.

Instrument :
 ECD_P
 ClientSampleId :
 I.BLK



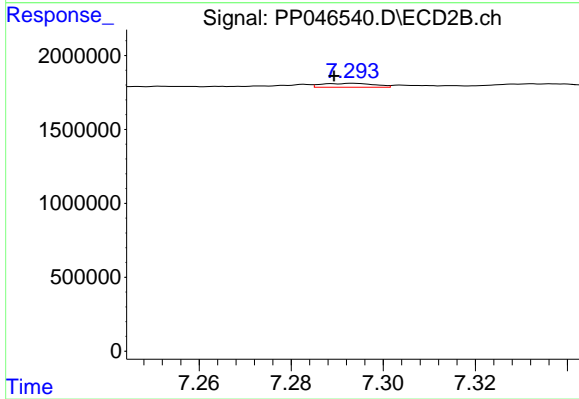
#37 AR-1262-2

R.T.: 6.700 min
 Delta R.T.: -0.018 min
 Response: 1066503
 Conc: 5.52 ng/ml



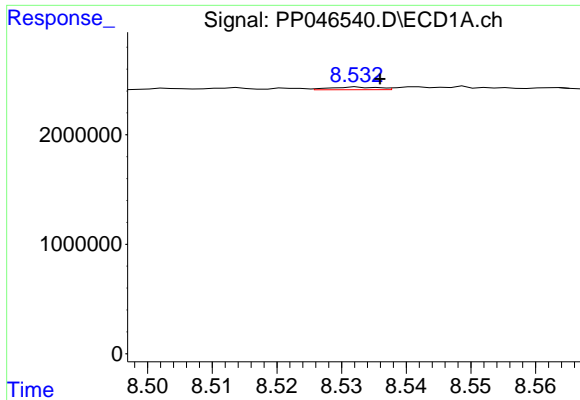
#38 AR-1262-3

R.T.: 8.445 min
 Delta R.T.: 0.004 min
 Response: 195561
 Conc: 1.46 ng/ml



#38 AR-1262-3

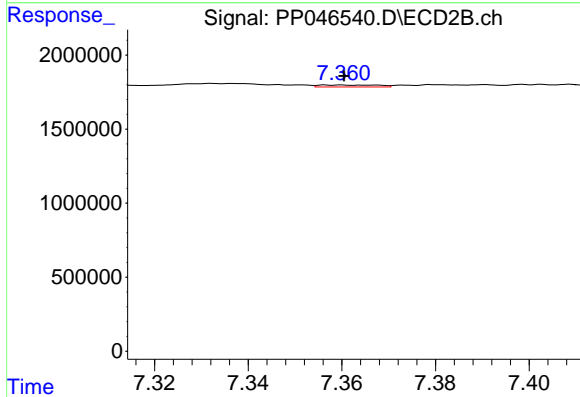
R.T.: 7.293 min
 Delta R.T.: 0.004 min
 Response: 207340
 Conc: 1.28 ng/ml



#39 AR-1262-4

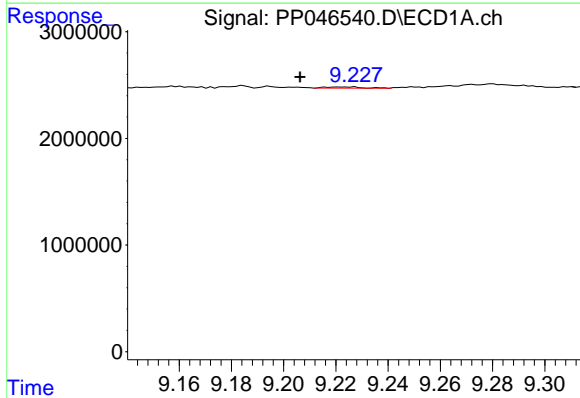
R.T.: 8.533 min
 Delta R.T.: -0.003 min
 Response: 129449
 Conc: 2.06 ng/ml

Instrument :
 ECD_P
 ClientSampleId :
 I.BLK



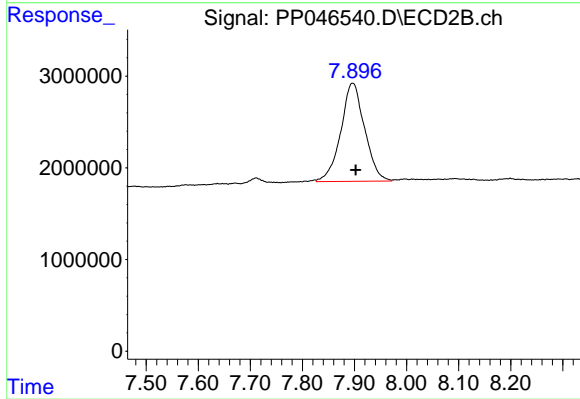
#39 AR-1262-4

R.T.: 7.360 min
 Delta R.T.: 0.000 min
 Response: 119096
 Conc: 0.42 ng/ml



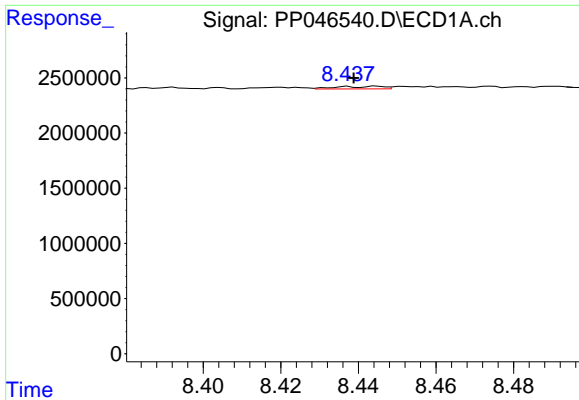
#40 AR-1262-5

R.T.: 9.224 min
 Delta R.T.: 0.018 min
 Response: 101211
 Conc: 1.47 ng/ml



#40 AR-1262-5

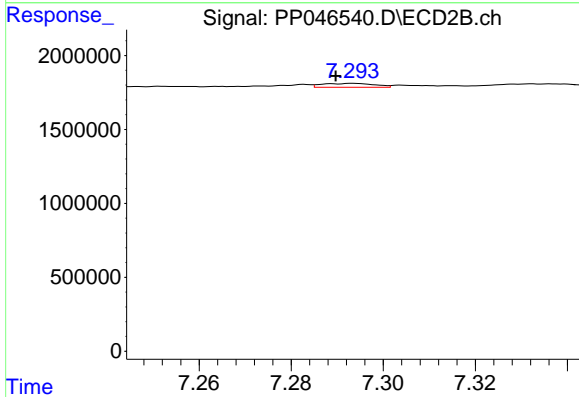
R.T.: 7.896 min
 Delta R.T.: -0.007 min
 Response: 34037909
 Conc: 259.42 ng/ml



#41 AR-1268-1

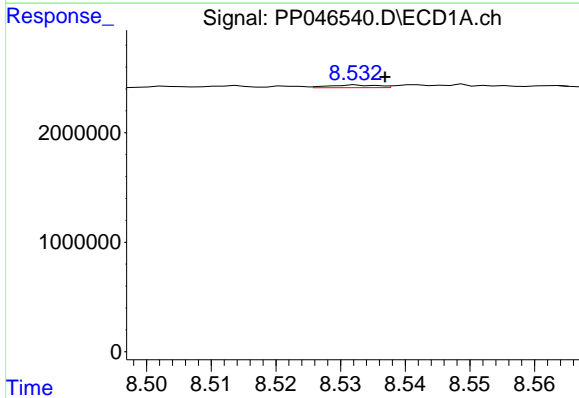
R.T.: 8.445 min
 Delta R.T.: 0.006 min
 Response: 195561
 Conc: 0.81 ng/ml

Instrument :
 ECD_P
 ClientSampleId :
 I.BLK



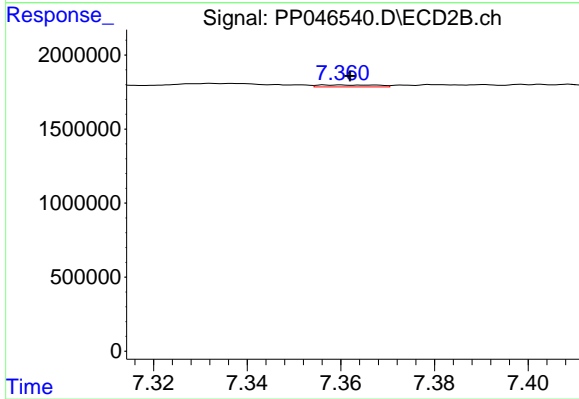
#41 AR-1268-1

R.T.: 7.293 min
 Delta R.T.: 0.004 min
 Response: 207340
 Conc: 0.43 ng/ml



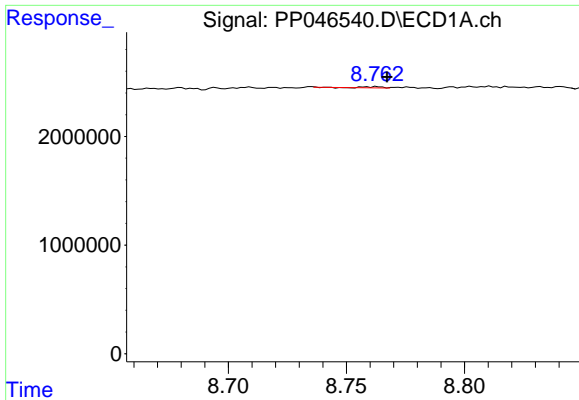
#42 AR-1268-2

R.T.: 8.533 min
 Delta R.T.: -0.004 min
 Response: 129449
 Conc: 0.58 ng/ml



#42 AR-1268-2

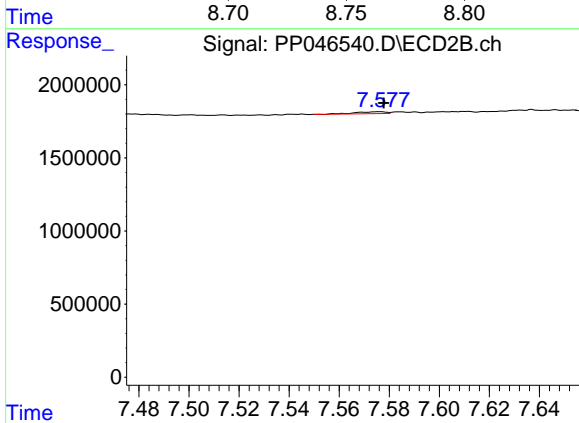
R.T.: 7.360 min
 Delta R.T.: -0.002 min
 Response: 119096
 Conc: 0.28 ng/ml



#43 AR-1268-3

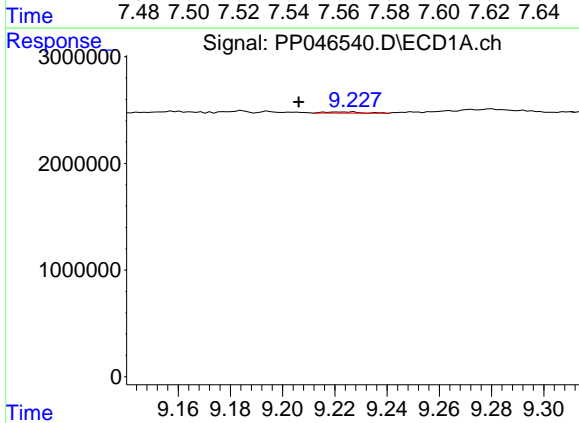
R.T.: 8.763 min
 Delta R.T.: -0.004 min
 Response: 55595
 Conc: 0.29 ng/ml

Instrument :
 ECD_P
 ClientSampleId :
 I.BLK



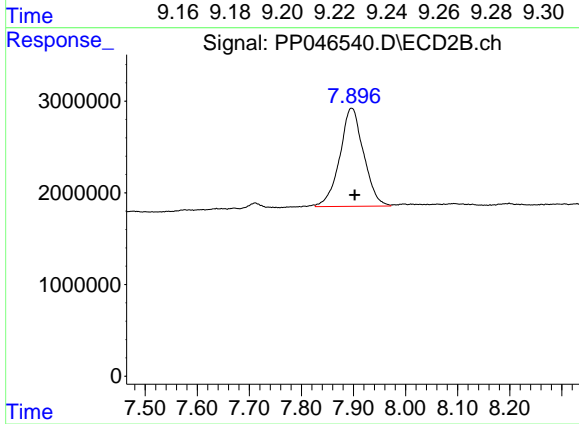
#43 AR-1268-3

R.T.: 7.576 min
 Delta R.T.: -0.001 min
 Response: 109617
 Conc: 0.31 ng/ml



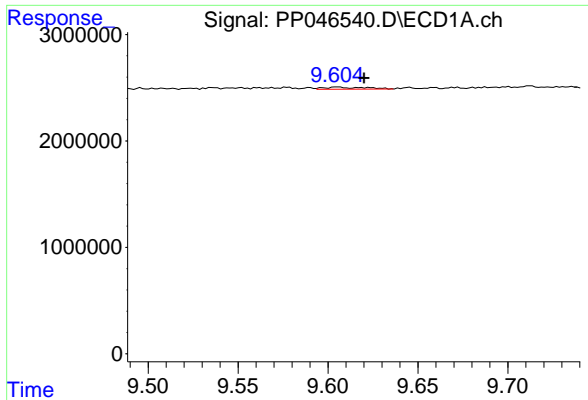
#44 AR-1268-4

R.T.: 9.224 min
 Delta R.T.: 0.018 min
 Response: 101211
 Conc: 1.31 ng/ml



#44 AR-1268-4

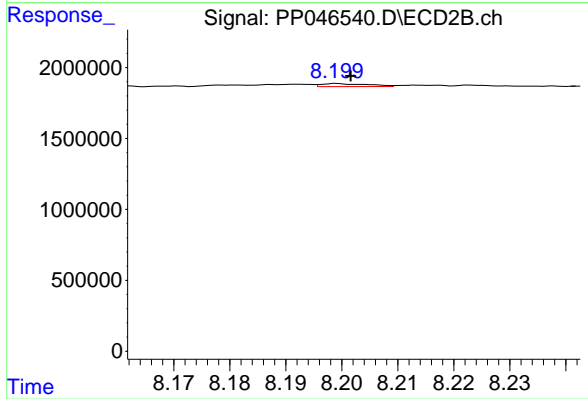
R.T.: 7.896 min
 Delta R.T.: -0.006 min
 Response: 34037909
 Conc: 231.46 ng/ml



#45 AR-1268-5

R.T.: 9.606 min
 Delta R.T.: -0.014 min
 Response: 311723
 Conc: 0.56 ng/ml

Instrument :
 ECD_P
 ClientSampleId :
 I.BLK



#45 AR-1268-5

R.T.: 8.199 min
 Delta R.T.: -0.002 min
 Response: 121713
 Conc: 0.12 ng/ml