

Data Path : Z:\pestpcbsrv\HPCHEM1\ECD\_P\Data\PP042225\  
 Data File : PP071396.D  
 Signal(s) : Signal #1: ECD1A.ch Signal #2: ECD2B.ch  
 Acq On : 22 Apr 2025 12:23  
 Operator : YP\AJ  
 Sample : AR1242ICC1000  
 Misc :  
 ALS Vial : 10 Sample Multiplier: 1

**Instrument :**  
 ECD\_P  
**ClientSampleId :**  
 AR1242ICC1000

Integration File signal 1: autoint1.e  
 Integration File signal 2: autoint2.e  
 Quant Time: Apr 22 13:20:33 2025  
 Quant Method : Z:\pestpcbsrv\HPCHEM1\ECD\_P\methods\PP042225.M  
 Quant Title : GC EXTRACTABLES  
 QLast Update : Tue Apr 22 13:13:15 2025  
 Response via : Initial Calibration  
 Integrator: ChemStation

Volume Inj. : 2 µl  
 Signal #1 Phase : ZB-MR1 Signal #2 Phase: ZB-MR2  
 Signal #1 Info : 30Mx0.32mmx 0.50µ Signal #2 Info : 30M x 0.32mm x 0.25µm

Compound	RT#1	RT#2	Resp#1	Resp#2	ng/ml	ng/ml
-----						
System Monitoring Compounds						
1) SA Tetrachlo...	4.513	3.812	186.9E6	129.5E6	96.183	92.543
2) SA Decachlor...	10.233	8.849	136.9E6	81561508	95.790	95.248
Target Compounds						
16) L4 AR-1242-1	5.668	4.897	53870259	42717527	958.842	942.603
17) L4 AR-1242-2	5.689	4.916	81881116	62346958	951.456	954.464
18) L4 AR-1242-3	5.751	5.093	49423643	34614031	962.179	947.245
19) L4 AR-1242-4	5.848	5.177	41638031	33518120	960.813	943.289
20) L4 AR-1242-5	6.580	5.701	44955701	41214500	963.821	956.409
-----						

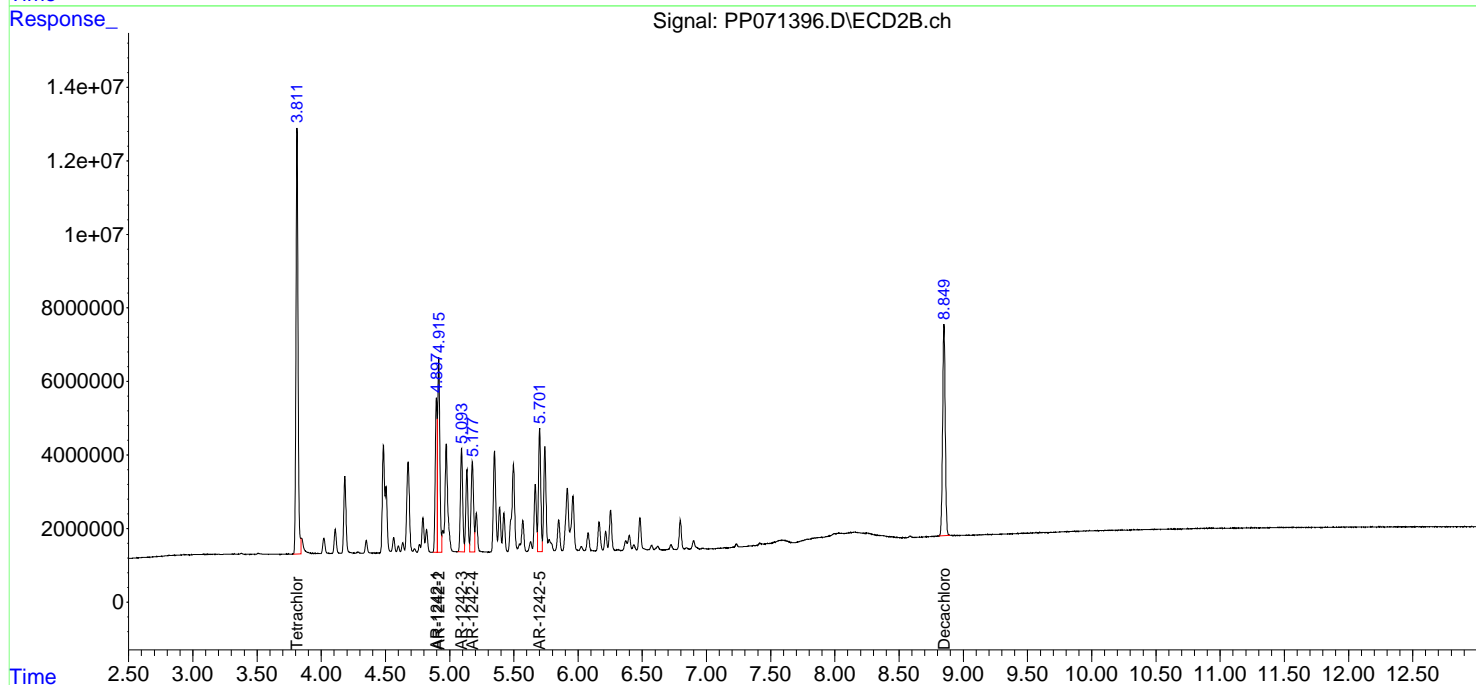
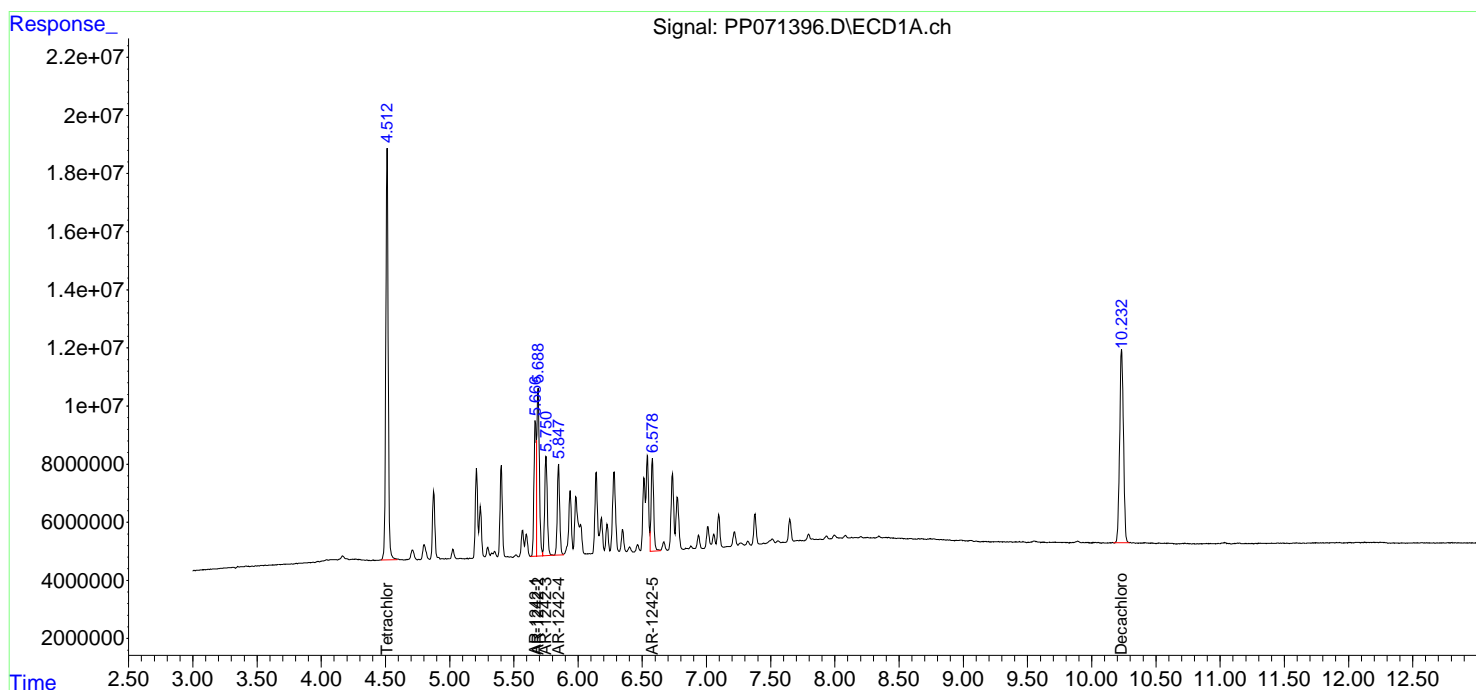
(f)=RT Delta > 1/2 Window (#)=Amounts differ by > 25% (m)=manual int.

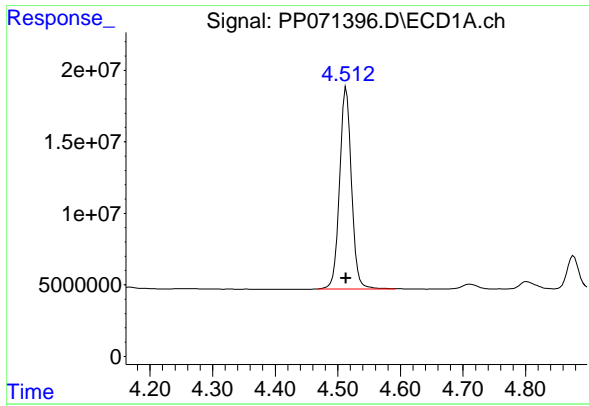
Data Path : Z:\pestpcbsrv\HPCHEM1\ECD\_P\Data\PP042225\  
 Data File : PP071396.D  
 Signal(s) : Signal #1: ECD1A.ch Signal #2: ECD2B.ch  
 Acq On : 22 Apr 2025 12:23  
 Operator : YP\AJ  
 Sample : AR1242ICC1000  
 Misc :  
 ALS Vial : 10 Sample Multiplier: 1

Instrument :  
 ECD\_P  
 ClientSampleId :  
 AR1242ICC1000

Integration File signal 1: autoint1.e  
 Integration File signal 2: autoint2.e  
 Quant Time: Apr 22 13:20:33 2025  
 Quant Method : Z:\pestpcbsrv\HPCHEM1\ECD\_P\methods\PP042225.M  
 Quant Title : GC EXTRACTABLES  
 QLast Update : Tue Apr 22 13:13:15 2025  
 Response via : Initial Calibration  
 Integrator: ChemStation

Volume Inj. : 2 µl  
 Signal #1 Phase : ZB-MR1 Signal #2 Phase: ZB-MR2  
 Signal #1 Info : 30Mx0.32mmx 0.50µm Signal #2 Info : 30M x 0.32mm x 0.25µm

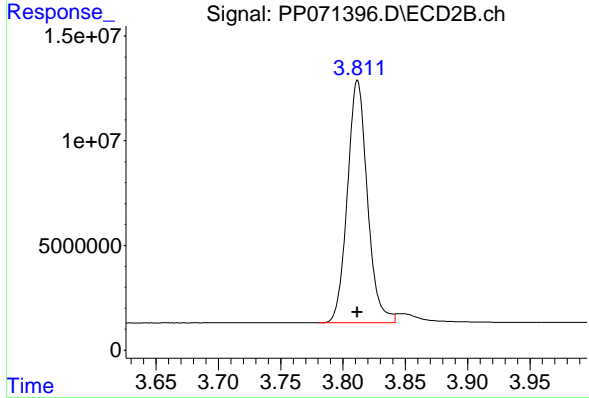




#1 Tetrachloro-m-xylene

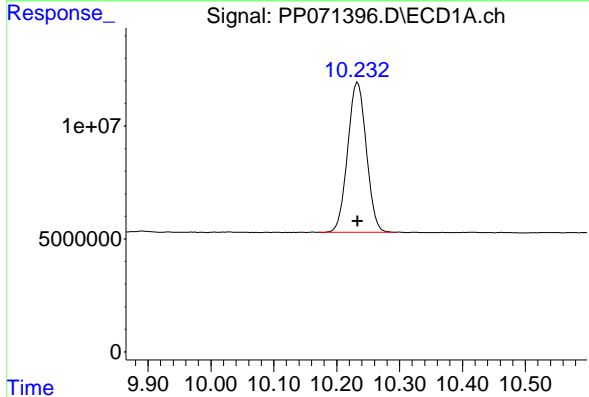
R.T.: 4.513 min  
 Delta R.T.: 0.000 min  
 Response: 186894535  
 Conc: 96.18 ng/ml

Instrument : ECD\_P  
 ClientSampleId : AR1242ICC1000



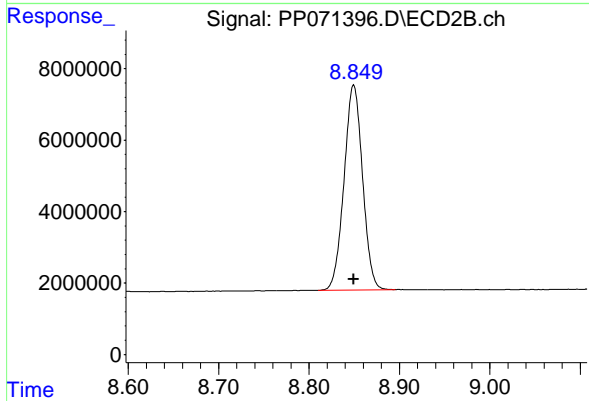
#1 Tetrachloro-m-xylene

R.T.: 3.812 min  
 Delta R.T.: 0.000 min  
 Response: 129515962  
 Conc: 92.54 ng/ml



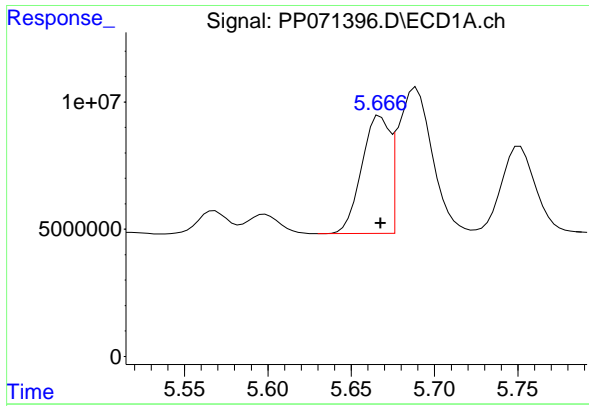
#2 Decachlorobiphenyl

R.T.: 10.233 min  
 Delta R.T.: 0.000 min  
 Response: 136854767  
 Conc: 95.79 ng/ml



#2 Decachlorobiphenyl

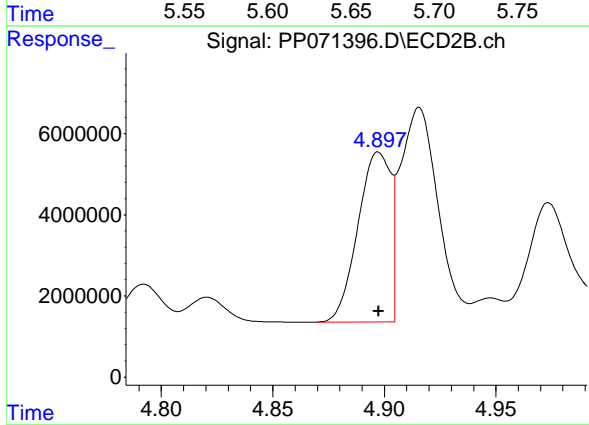
R.T.: 8.849 min  
 Delta R.T.: 0.000 min  
 Response: 81561508  
 Conc: 95.25 ng/ml



#16 AR-1242-1

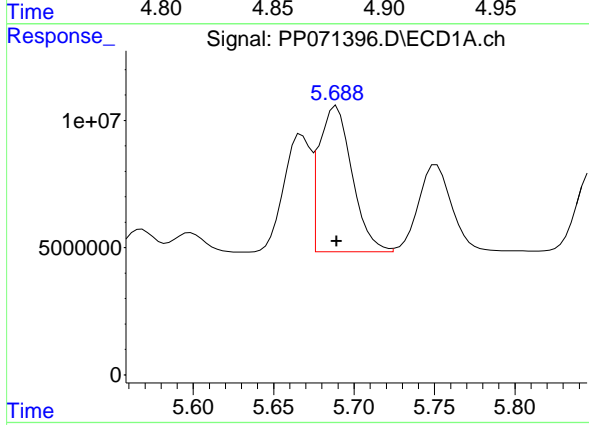
R.T.: 5.668 min  
 Delta R.T.: 0.000 min  
 Response: 53870259  
 Conc: 958.84 ng/ml

Instrument :  
 ECD\_P  
 ClientSampleId :  
 AR1242ICC1000



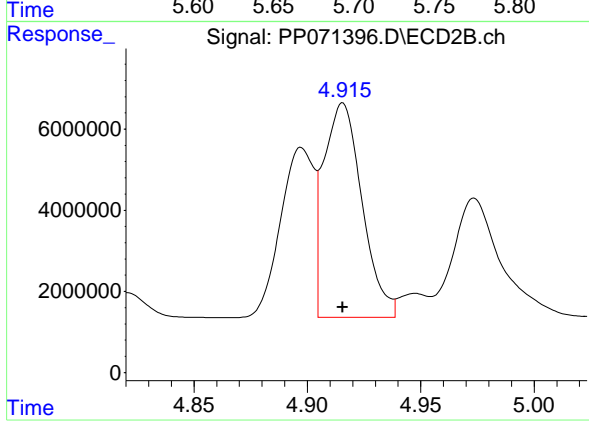
#16 AR-1242-1

R.T.: 4.897 min  
 Delta R.T.: 0.000 min  
 Response: 42717527  
 Conc: 942.60 ng/ml



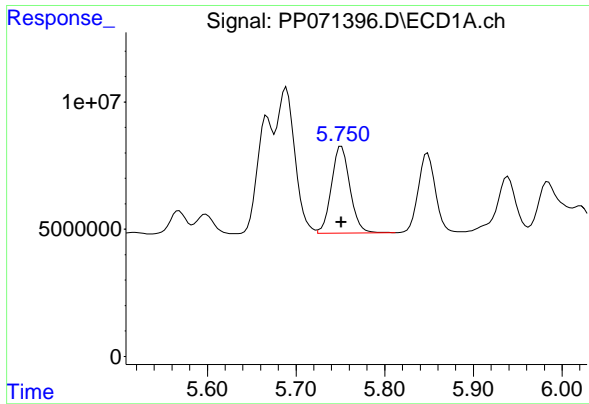
#17 AR-1242-2

R.T.: 5.689 min  
 Delta R.T.: 0.000 min  
 Response: 81881116  
 Conc: 951.46 ng/ml



#17 AR-1242-2

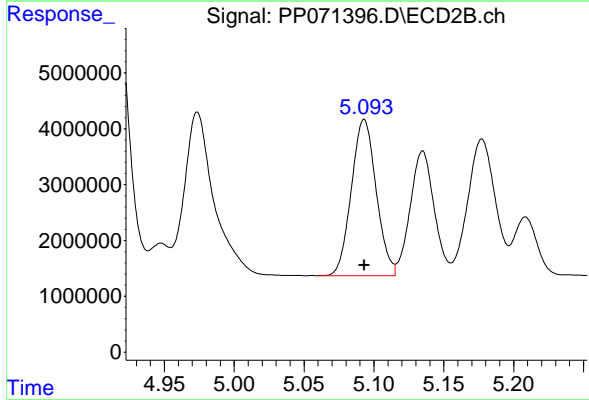
R.T.: 4.916 min  
 Delta R.T.: 0.000 min  
 Response: 62346958  
 Conc: 954.46 ng/ml



#18 AR-1242-3

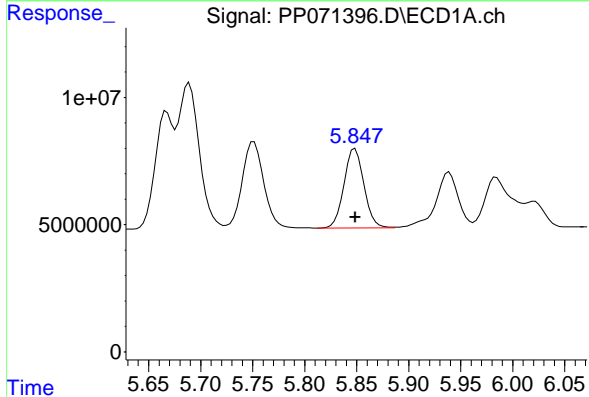
R.T.: 5.751 min  
 Delta R.T.: 0.000 min  
 Response: 49423643  
 Conc: 962.18 ng/ml

Instrument :  
 ECD\_P  
 ClientSampleId :  
 AR1242ICC1000



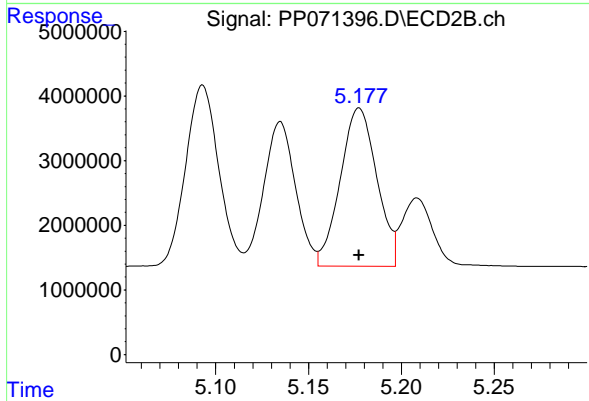
#18 AR-1242-3

R.T.: 5.093 min  
 Delta R.T.: 0.000 min  
 Response: 34614031  
 Conc: 947.24 ng/ml



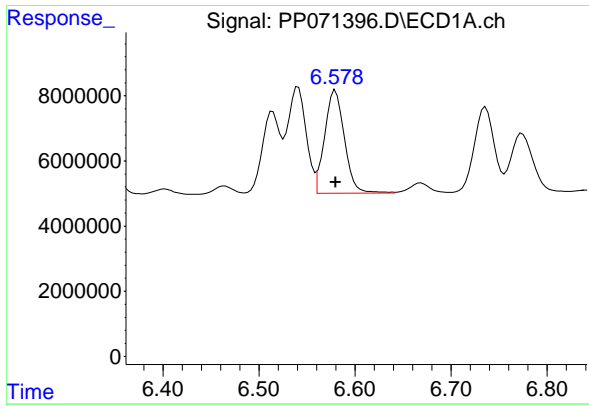
#19 AR-1242-4

R.T.: 5.848 min  
 Delta R.T.: 0.000 min  
 Response: 41638031  
 Conc: 960.81 ng/ml



#19 AR-1242-4

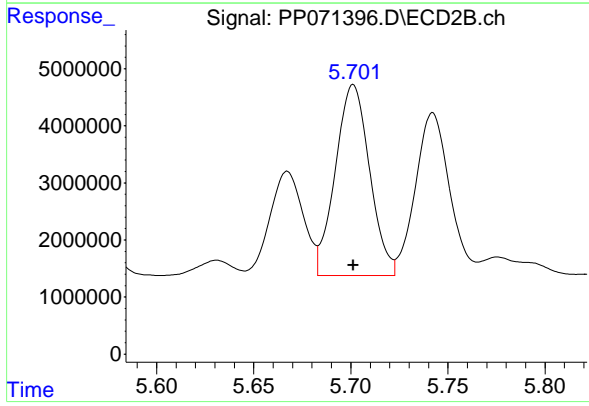
R.T.: 5.177 min  
 Delta R.T.: 0.000 min  
 Response: 33518120  
 Conc: 943.29 ng/ml



#20 AR-1242-5

R.T.: 6.580 min  
Delta R.T.: 0.000 min  
Response: 44955701  
Conc: 963.82 ng/ml

Instrument :  
ECD\_P  
ClientSampleId :  
AR1242ICC1000



#20 AR-1242-5

R.T.: 5.701 min  
Delta R.T.: 0.000 min  
Response: 41214500  
Conc: 956.41 ng/ml