

Data Path : Z:\pestpcbsrv\HPCHEM1\ECD\_P\Data\PP042424\  
 Data File : PP064522.D  
 Signal(s) : Signal #1: ECD1A.ch Signal #2: ECD2B.ch  
 Acq On : 24 Apr 2024 15:50  
 Operator : YP\AJ  
 Sample : AR1660CCC500  
 Misc :  
 ALS Vial : 3 Sample Multiplier: 1

**Instrument :**  
 ECD\_P  
**ClientSampleId :**  
 AR1660CCC500

Integration File signal 1: autoint1.e  
 Integration File signal 2: autoint2.e  
 Quant Time: Apr 24 18:57:29 2024  
 Quant Method : Z:\pestpcbsrv\HPCHEM1\ECD\_P\methods\PP042324.M  
 Quant Title : GC EXTRACTABLES  
 QLast Update : Wed Apr 24 05:09:39 2024  
 Response via : Initial Calibration  
 Integrator: ChemStation

Volume Inj. : 2 µl  
 Signal #1 Phase : ZB-MR2 Signal #2 Phase: ZB-MR2  
 Signal #1 Info : 30Mx0.32mmx 0.50µ Signal #2 Info : 30M x 0.32mm x 0.25µm

Compound	RT#1	RT#2	Resp#1	Resp#2	ng/ml	ng/ml
-----						
System Monitoring Compounds						
1) SA Tetrachlo...	4.482	3.631	139.2E6	99110226	40.144	40.046
2) SA Decachlor...	10.345	8.662	116.1E6	106.5E6	45.660	43.439
Target Compounds						
3) L1 AR-1016-1	5.665	4.723	43675573	31550487	439.911	442.956
4) L1 AR-1016-2	5.688	4.741	63798247	45659759	437.563	442.306
5) L1 AR-1016-3	5.751	4.918	41159729	24836413	440.939	448.044
6) L1 AR-1016-4	5.850	4.960	33422797	20137333	441.577	416.409
7) L1 AR-1016-5	6.147	5.175	33233432	29187354	441.460	465.250
31) L7 AR-1260-1	7.283	6.212	60586758	56582533	451.403	457.338
32) L7 AR-1260-2	7.541	6.401	66451751	66371546	456.301	463.806
33) L7 AR-1260-3	7.903	6.555	52001092	62455471	452.262	456.519
34) L7 AR-1260-4	8.132	7.028	57888464	52706153	455.239	455.846
35) L7 AR-1260-5	8.461	7.271	108.2E6	115.7E6	476.598	468.333

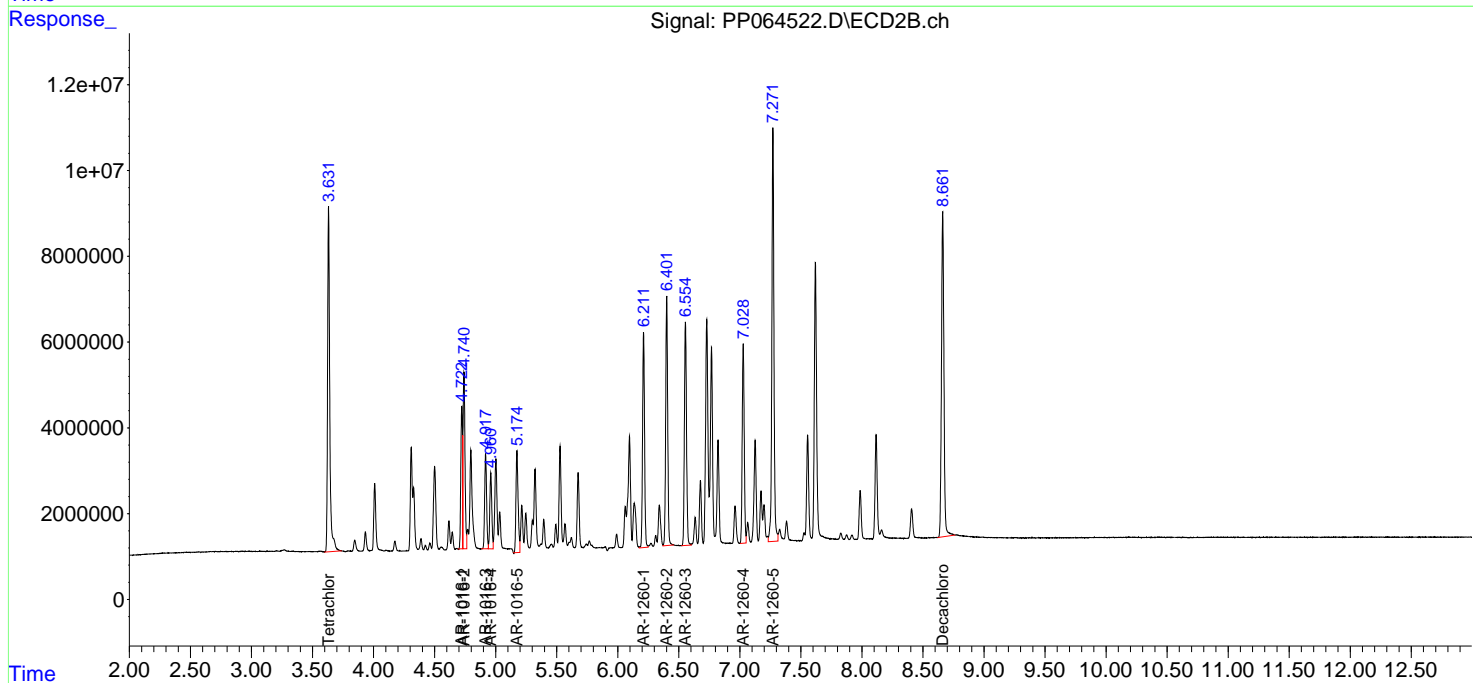
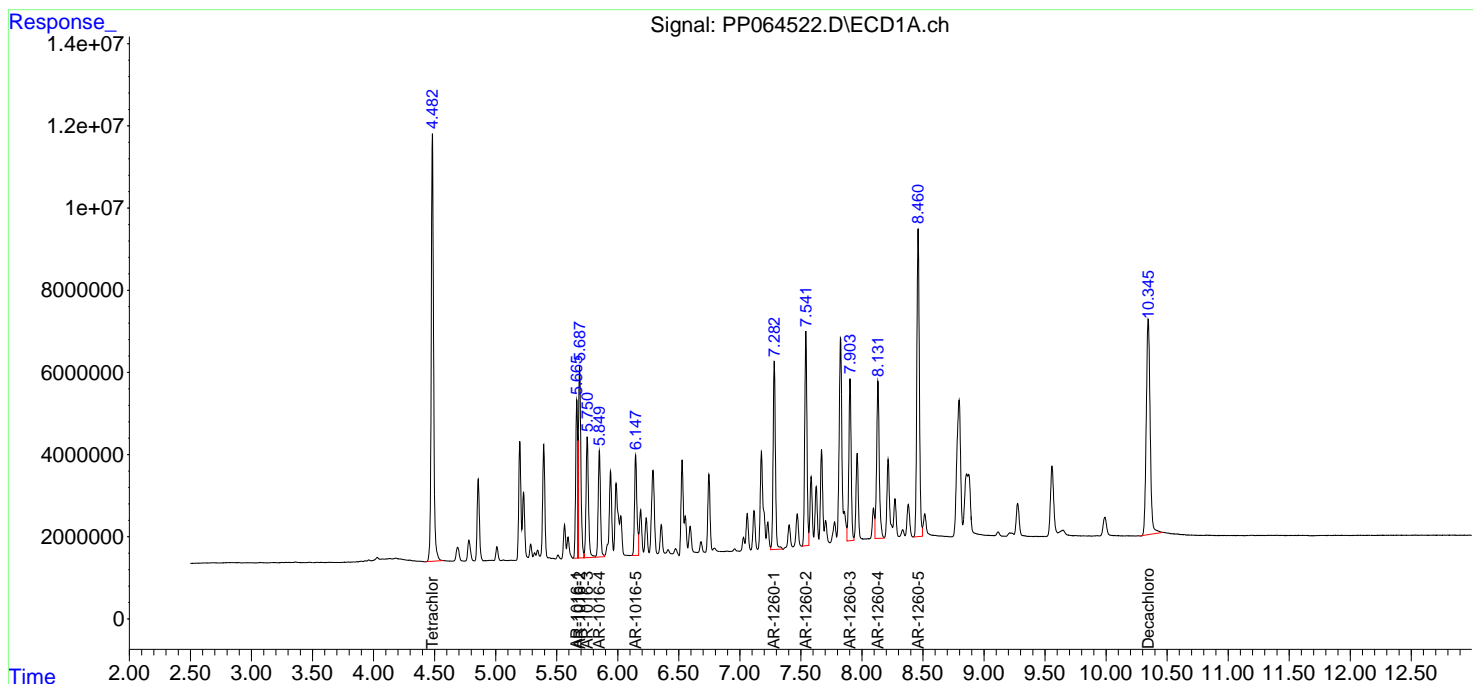
(f)=RT Delta > 1/2 Window (#)=Amounts differ by > 25% (m)=manual int.

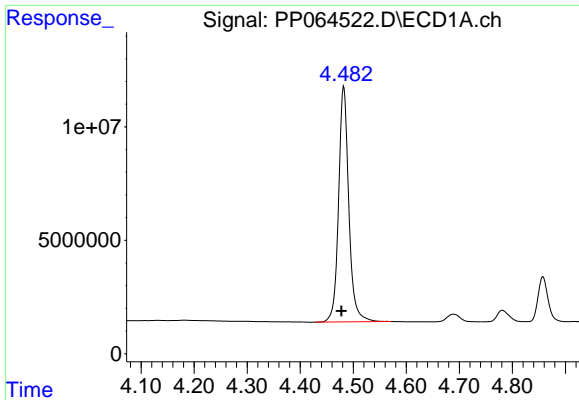
Data Path : Z:\pestpcbsrv\HPCHEM1\ECD\_P\Data\PP042424\  
 Data File : PP064522.D  
 Signal(s) : Signal #1: ECD1A.ch Signal #2: ECD2B.ch  
 Acq On : 24 Apr 2024 15:50  
 Operator : YP\AJ  
 Sample : AR1660CCC500  
 Misc :  
 ALS Vial : 3 Sample Multiplier: 1

Instrument :  
 ECD\_P  
 ClientSampleId :  
 AR1660CCC500

Integration File signal 1: autoint1.e  
 Integration File signal 2: autoint2.e  
 Quant Time: Apr 24 18:57:29 2024  
 Quant Method : Z:\pestpcbsrv\HPCHEM1\ECD\_P\methods\PP042324.M  
 Quant Title : GC EXTRACTABLES  
 QLast Update : Wed Apr 24 05:09:39 2024  
 Response via : Initial Calibration  
 Integrator: ChemStation

Volume Inj. : 2 µl  
 Signal #1 Phase : ZB-MR1 Signal #2 Phase: ZB-MR2  
 Signal #1 Info : 30Mx0.32mmx 0.50µ Signal #2 Info : 30M x 0.32mm x 0.25µm

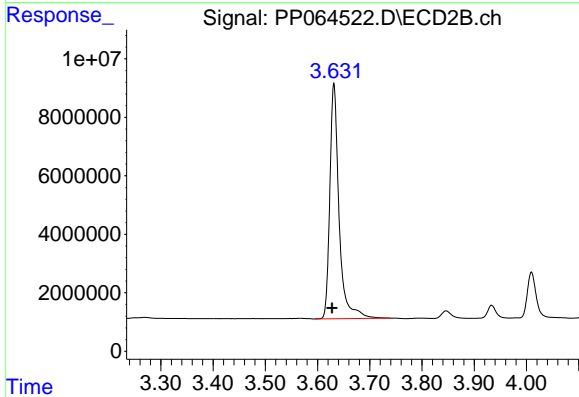




#1 Tetrachloro-m-xylene

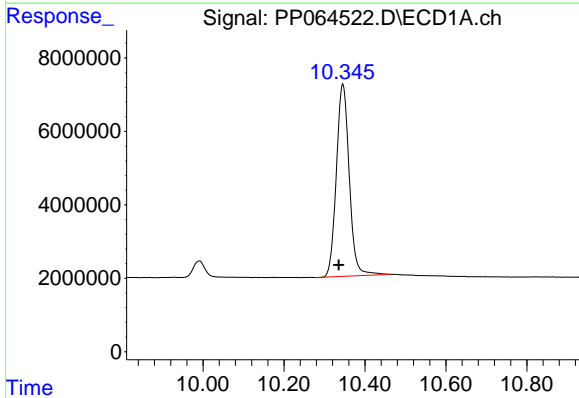
R.T.: 4.482 min  
 Delta R.T.: 0.004 min  
 Response: 139206768  
 Conc: 40.14 ng/ml

Instrument :  
 ECD\_P  
 ClientSampleId :  
 AR1660CCC500



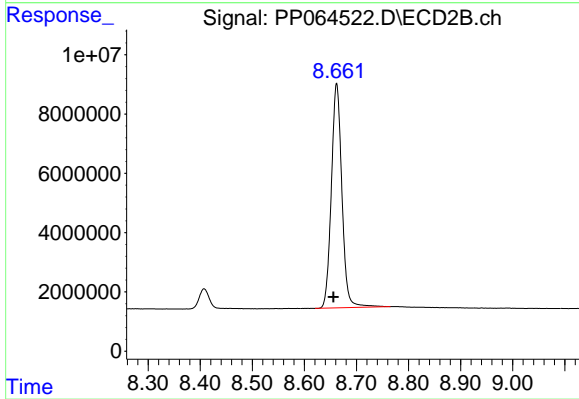
#1 Tetrachloro-m-xylene

R.T.: 3.631 min  
 Delta R.T.: 0.004 min  
 Response: 99110226  
 Conc: 40.05 ng/ml



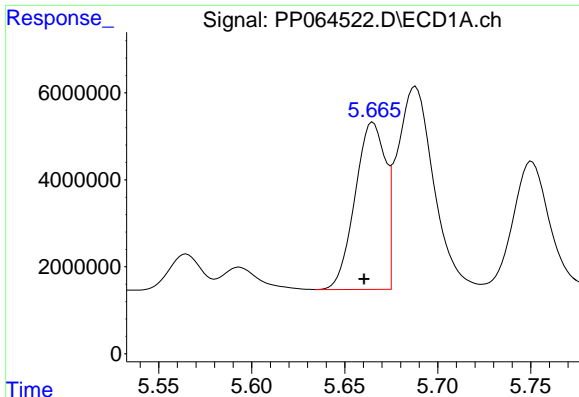
#2 Decachlorobiphenyl

R.T.: 10.345 min  
 Delta R.T.: 0.010 min  
 Response: 116058916  
 Conc: 45.66 ng/ml



#2 Decachlorobiphenyl

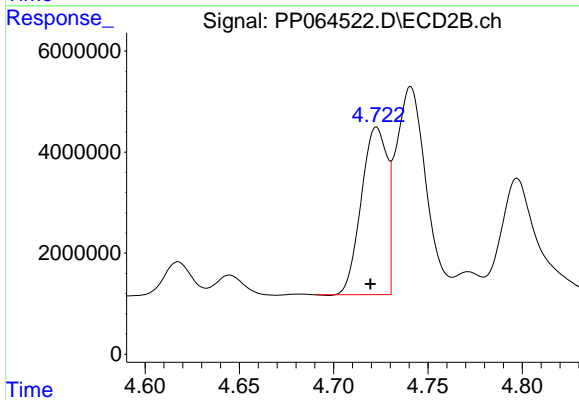
R.T.: 8.662 min  
 Delta R.T.: 0.006 min  
 Response: 106530300  
 Conc: 43.44 ng/ml



#3 AR-1016-1

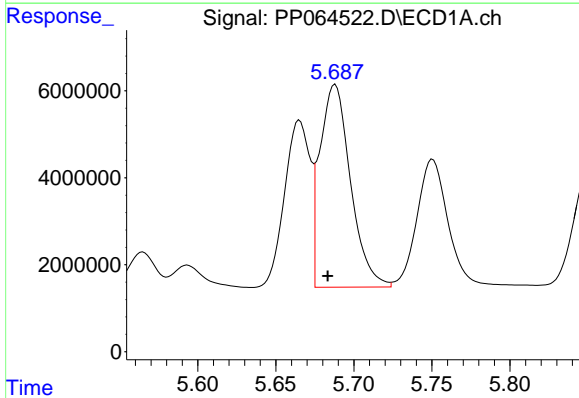
R.T.: 5.665 min  
 Delta R.T.: 0.005 min  
 Response: 43675573  
 Conc: 439.91 ng/ml

Instrument :  
 ECD\_P  
 ClientSampleId :  
 AR1660CCC500



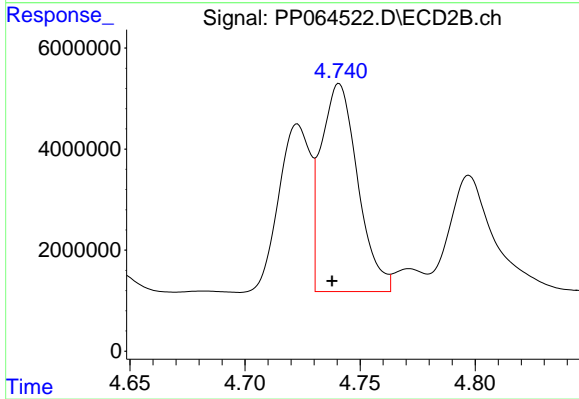
#3 AR-1016-1

R.T.: 4.723 min  
 Delta R.T.: 0.003 min  
 Response: 31550487  
 Conc: 442.96 ng/ml



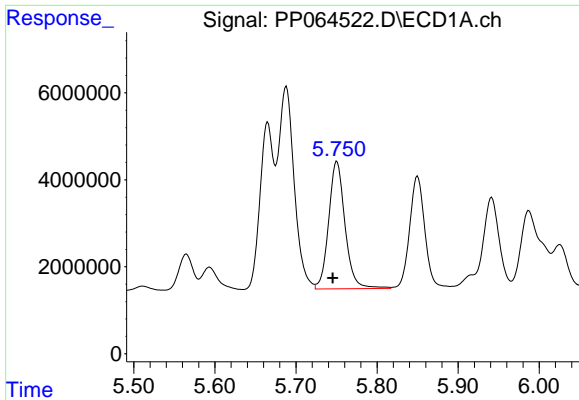
#4 AR-1016-2

R.T.: 5.688 min  
 Delta R.T.: 0.005 min  
 Response: 63798247  
 Conc: 437.56 ng/ml



#4 AR-1016-2

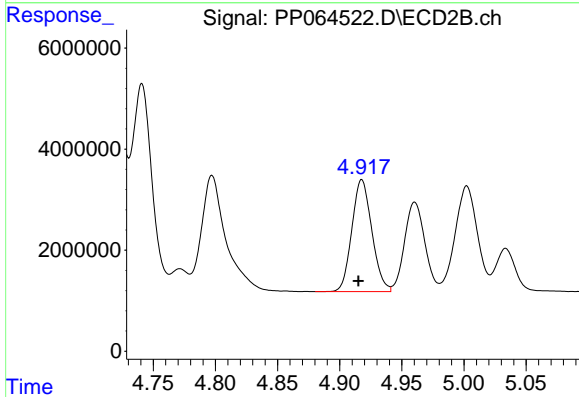
R.T.: 4.741 min  
 Delta R.T.: 0.003 min  
 Response: 45659759  
 Conc: 442.31 ng/ml



#5 AR-1016-3

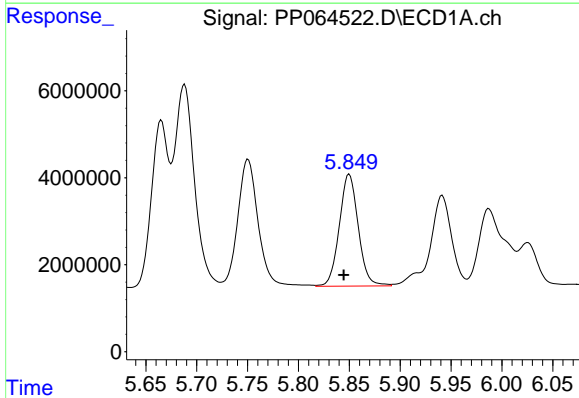
R.T.: 5.751 min  
 Delta R.T.: 0.005 min  
 Response: 41159729  
 Conc: 440.94 ng/ml

Instrument :  
 ECD\_P  
 ClientSampleId :  
 AR1660CCC500



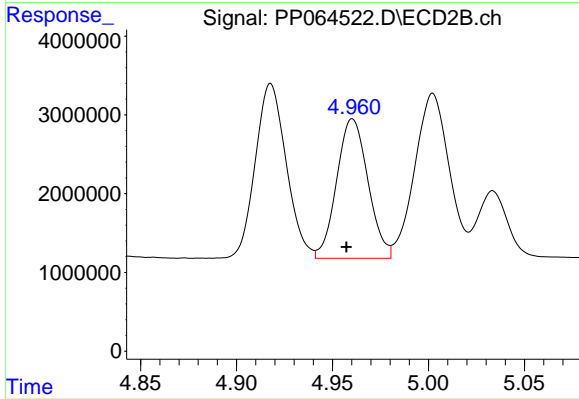
#5 AR-1016-3

R.T.: 4.918 min  
 Delta R.T.: 0.003 min  
 Response: 24836413  
 Conc: 448.04 ng/ml



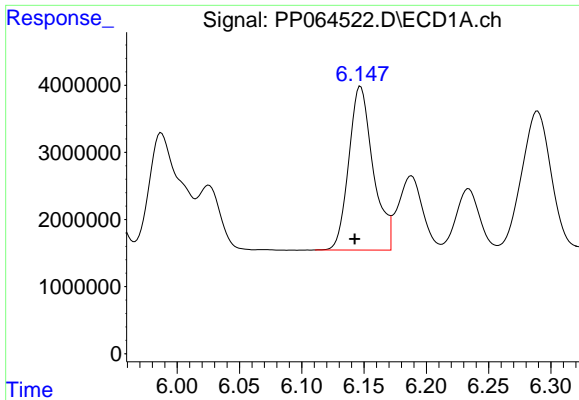
#6 AR-1016-4

R.T.: 5.850 min  
 Delta R.T.: 0.006 min  
 Response: 33422797  
 Conc: 441.58 ng/ml



#6 AR-1016-4

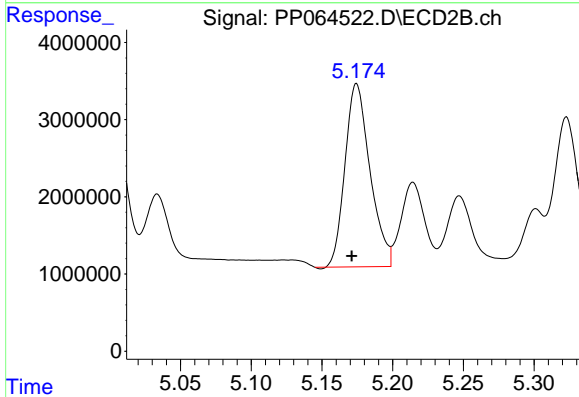
R.T.: 4.960 min  
 Delta R.T.: 0.003 min  
 Response: 20137333  
 Conc: 416.41 ng/ml



#7 AR-1016-5

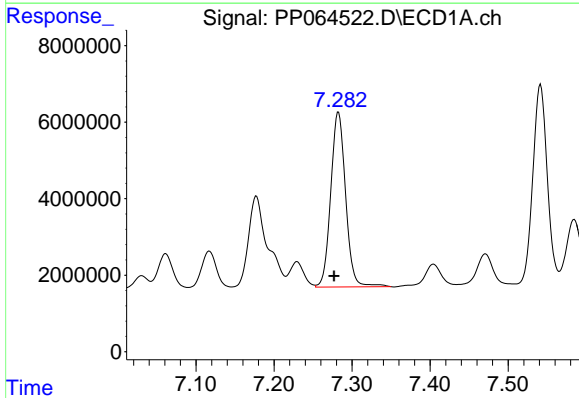
R.T.: 6.147 min  
 Delta R.T.: 0.005 min  
 Response: 33233432  
 Conc: 441.46 ng/ml

Instrument :  
 ECD\_P  
 ClientSampleId :  
 AR1660CCC500



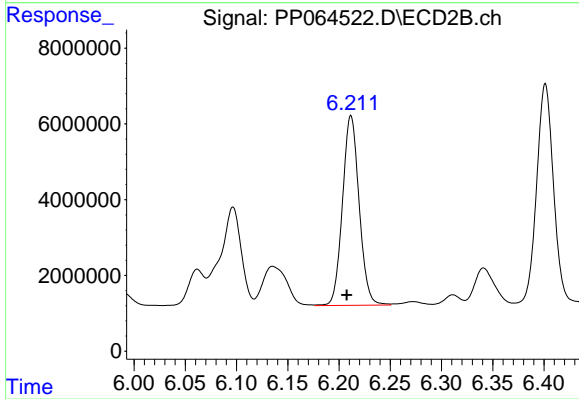
#7 AR-1016-5

R.T.: 5.175 min  
 Delta R.T.: 0.003 min  
 Response: 29187354  
 Conc: 465.25 ng/ml



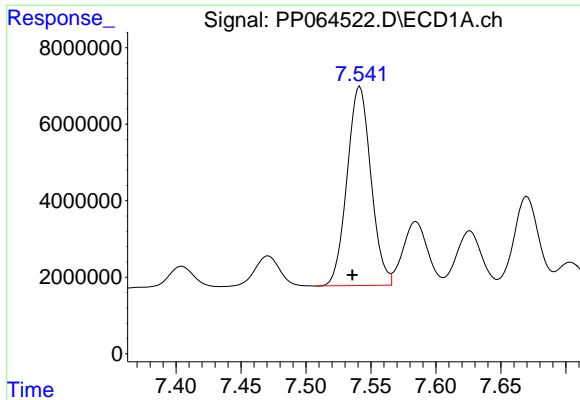
#31 AR-1260-1

R.T.: 7.283 min  
 Delta R.T.: 0.005 min  
 Response: 60586758  
 Conc: 451.40 ng/ml



#31 AR-1260-1

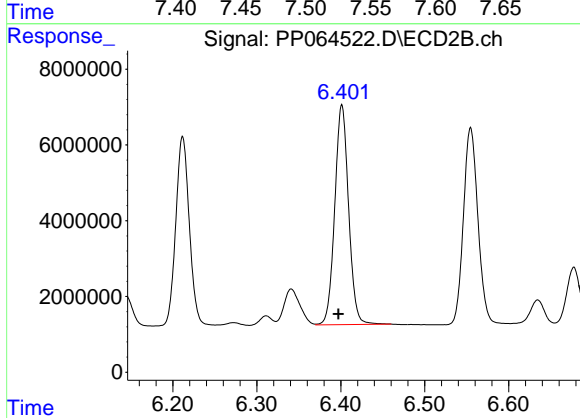
R.T.: 6.212 min  
 Delta R.T.: 0.004 min  
 Response: 56582533  
 Conc: 457.34 ng/ml



#32 AR-1260-2

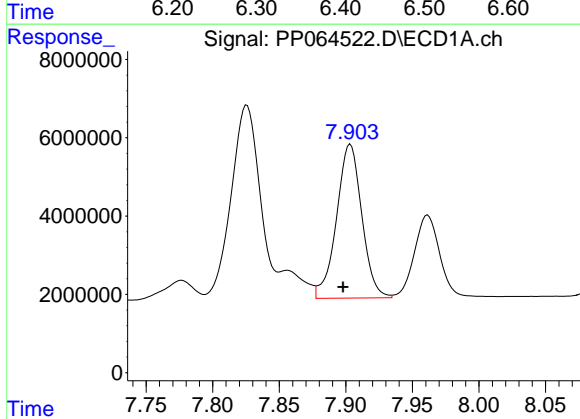
R.T.: 7.541 min  
 Delta R.T.: 0.006 min  
 Response: 66451751  
 Conc: 456.30 ng/ml

Instrument :  
 ECD\_P  
 ClientSampleId :  
 AR1660CCC500



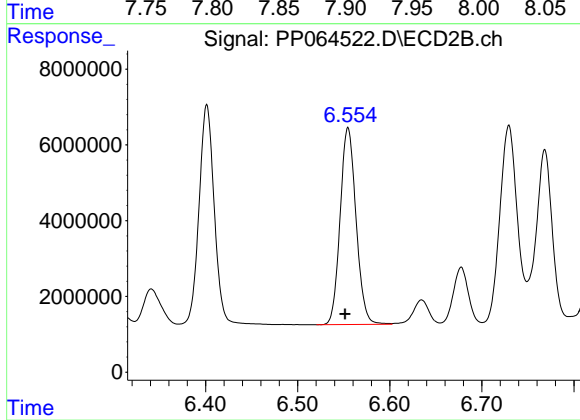
#32 AR-1260-2

R.T.: 6.401 min  
 Delta R.T.: 0.004 min  
 Response: 66371546  
 Conc: 463.81 ng/ml



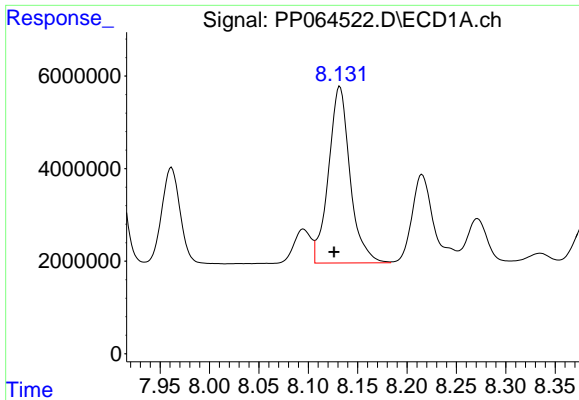
#33 AR-1260-3

R.T.: 7.903 min  
 Delta R.T.: 0.005 min  
 Response: 52001092  
 Conc: 452.26 ng/ml



#33 AR-1260-3

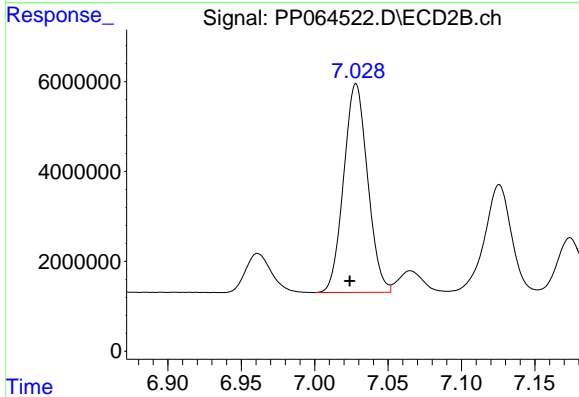
R.T.: 6.555 min  
 Delta R.T.: 0.003 min  
 Response: 62455471  
 Conc: 456.52 ng/ml



#34 AR-1260-4

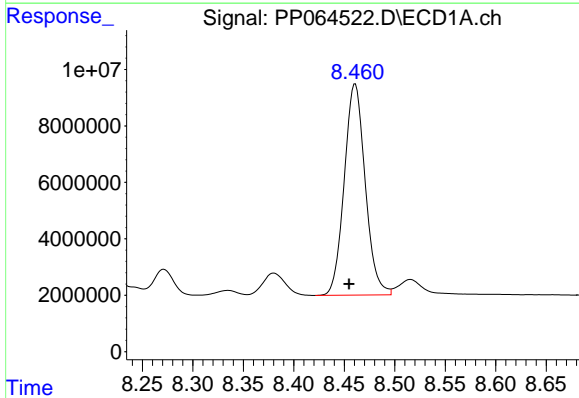
R.T.: 8.132 min  
 Delta R.T.: 0.006 min  
 Response: 57888464  
 Conc: 455.24 ng/ml

Instrument :  
 ECD\_P  
 ClientSampleId :  
 AR1660CCC500



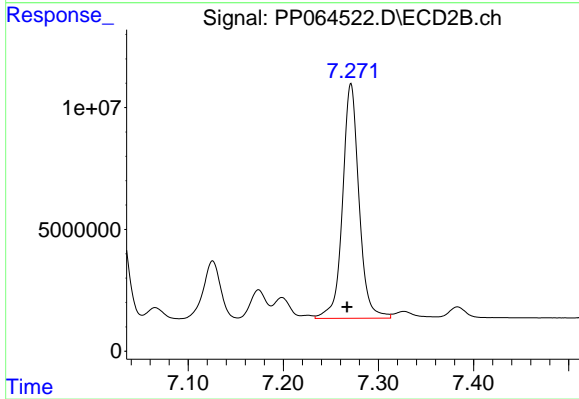
#34 AR-1260-4

R.T.: 7.028 min  
 Delta R.T.: 0.004 min  
 Response: 52706153  
 Conc: 455.85 ng/ml



#35 AR-1260-5

R.T.: 8.461 min  
 Delta R.T.: 0.006 min  
 Response: 108236187  
 Conc: 476.60 ng/ml



#35 AR-1260-5

R.T.: 7.271 min  
 Delta R.T.: 0.004 min  
 Response: 115701471  
 Conc: 468.33 ng/ml