

Data Path : Z:\pestpcbsrv\HPCHEM1\ECD_P\Data\PP042425\
 Data File : PP071445.D
 Signal(s) : Signal #1: ECD1A.ch Signal #2: ECD2B.ch
 Acq On : 24 Apr 2025 19:13
 Operator : YP\AJ
 Sample : Q1867-01MSD
 Misc :
 ALS Vial : 19 Sample Multiplier: 1

Instrument :
 ECD_P
 ClientSampleId :

Integration File signal 1: autoint1.e
 Integration File signal 2: autoint2.e
 Quant Time: Apr 25 00:27:32 2025
 Quant Method : Z:\pestpcbsrv\HPCHEM1\ECD_P\methods\PP042225.M
 Quant Title : GC EXTRACTABLES
 QLast Update : Wed Apr 23 05:02:06 2025
 Response via : Initial Calibration
 Integrator: ChemStation

Volume Inj. : 2 µl
 Signal #1 Phase : ZB-MR1 Signal #2 Phase: ZB-MR2
 Signal #1 Info : 30Mx0.32mmx 0.50µ Signal #2 Info : 30M x 0.32mm x 0.25µm

Compound	RT#1	RT#2	Resp#1	Resp#2	ng/ml	ng/ml
System Monitoring Compounds						
1) SA Tetrachlo...	4.514	3.812	32320962	26279135	16.302	18.656
2) SA Decachlor...	10.232	8.846	30918713	17706947	21.353	20.189
Target Compounds						
3) L1 AR-1016-1	5.667	4.897	72006157	53258594	1073.920	994.863
4) L1 AR-1016-2	5.689	4.916	142.1E6	96436379	1384.391	1262.856
5) L1 AR-1016-3	5.752	5.092	42648803	49075745	691.822	1162.646 #
6) L1 AR-1016-4	5.848	5.134	67319694	64372815	1312.322	1866.640 #
7) L1 AR-1016-5	6.141	5.349	107.0E6	90038013	2217.292	2025.726
8) L2 AR-1221-1	4.713	4.021	4443881	2412165	184.265	109.669 #
9) L2 AR-1221-2	4.802	4.109	3615121	3852864	200.651	232.637
10) L2 AR-1221-3	4.877	4.184	15691399	12743209	277.178	262.871
11) L3 AR-1232-1	4.877	4.184	15691399	12743209	349.380	332.566
12) L3 AR-1232-2	5.403	4.916	38736624	96436379	1683.243	2525.346 #
13) L3 AR-1232-3	5.689	5.092	142.1E6	49075745	3009.001	2317.595
14) L3 AR-1232-4	5.848	5.177	67319694	72069843	2904.296	3887.176 #
15) L3 AR-1232-5	5.939	5.349	83629672	90038013	5179.680	4524.102
16) L4 AR-1242-1	5.667	4.897	72006157	53258594	1314.668	1151.696
17) L4 AR-1242-2	5.689	4.916	142.1E6	96436379	1671.885	1460.654
18) L4 AR-1242-3	5.752	5.092	42648803	49075745	834.234	1346.449 #
19) L4 AR-1242-4	5.848	5.177	67319694	72069843	1594.930	2018.165 #
20) L4 AR-1242-5	6.579	5.701	194.8E6	181.9E6	4207.647	4180.789
21) L5 AR-1248-1	5.667	4.897	72006157	53258594	1676.945	1475.038
22) L5 AR-1248-2	5.939	5.134	83629672	64372815	1383.853	1314.740
23) L5 AR-1248-3	6.141	5.177	107.0E6	72069843	1601.549	1410.769
24) L5 AR-1248-4	6.541	5.349	181.7E6	90038013	2147.741	1484.372 #
25) L5 AR-1248-5	6.579	5.742	194.8E6	133.1E6	2451.583	2283.653
26) L6 AR-1254-1	6.515	5.701	152.6E6	181.9E6	1861.909	1990.123
27) L6 AR-1254-2	6.734	5.849	245.2E6	94003827	1929.787	1194.273 #
28) L6 AR-1254-3	7.096	6.253	182.6E6	172.5E6	1428.767	1455.932
29) L6 AR-1254-4	7.378	6.481	199.0E6	119.3E6	1693.278	1546.592
30) L6 AR-1254-5	7.795	6.898	204.0E6	148.5E6	1893.438	1463.038
31) L7 AR-1260-1	7.261	6.384	99295078	108.9E6	1034.059	1506.583 #
32) L7 AR-1260-2	7.513	6.571	160.9E6	94036611	1124.893	1075.178
33) L7 AR-1260-3	7.872	6.724	60032711	78996185	535.509	1007.764 #
34) L7 AR-1260-4	8.088	7.196	109.2E6	32162525	967.409	509.622 #
35) L7 AR-1260-5	8.417	7.437	127.9E6	100.1E6	564.688	664.125
36) L8 AR-1262-1	8.088	6.934	109.2E6	42711022	755.661	375.937 #
37) L8 AR-1262-2	8.417	7.196	127.9E6	32162525	466.629	348.308 #
38) L8 AR-1262-3	8.742	7.718	81347797	15558352	444.821	205.541 #
39) L8 AR-1262-4	8.802	7.782	41719198	54405629	310.848	435.852 #
40) L8 AR-1262-5	9.474	8.283	24357475	15180814	276.281	273.562
41) L9 AR-1268-1	8.742	7.718	81347797	15558352	261.835	77.912 #

Data Path : Z:\pestpcbsrv\HPCHEM1\ECD_P\Data\PP042425\
 Data File : PP071445.D
 Signal(s) : Signal #1: ECD1A.ch Signal #2: ECD2B.ch
 Acq On : 24 Apr 2025 19:13
 Operator : YP\AJ
 Sample : Q1867-01MSD
 Misc :
 ALS Vial : 19 Sample Multiplier: 1

Instrument :
 ECD_P
 ClientSampleId :

Integration File signal 1: autoint1.e
 Integration File signal 2: autoint2.e
 Quant Time: Apr 25 00:27:32 2025
 Quant Method : Z:\pestpcbsrv\HPCHEM1\ECD_P\methods\PP042225.M
 Quant Title : GC EXTRACTABLES
 QLast Update : Wed Apr 23 05:02:06 2025
 Response via : Initial Calibration
 Integrator: ChemStation

Volume Inj. : 2 µl
 Signal #1 Phase : ZB-MR1 Signal #2 Phase: ZB-MR2
 Signal #1 Info : 30Mx0.32mmx 0.50µ Signal #2 Info : 30M x 0.32mm x 0.25µm

	Compound	RT#1	RT#2	Resp#1	Resp#2	ng/ml	ng/ml
42)	L9 AR-1268-2	8.802	7.782	41719198	54405629	161.861	321.876 #
43)	L9 AR-1268-3	9.055	7.989	2472253	1767296	11.091	12.705
44)	L9 AR-1268-4	9.474	8.283	24357475	15180814	258.961	249.696
45)	L9 AR-1268-5	9.892	8.584	10311451	5914858	17.237	15.845

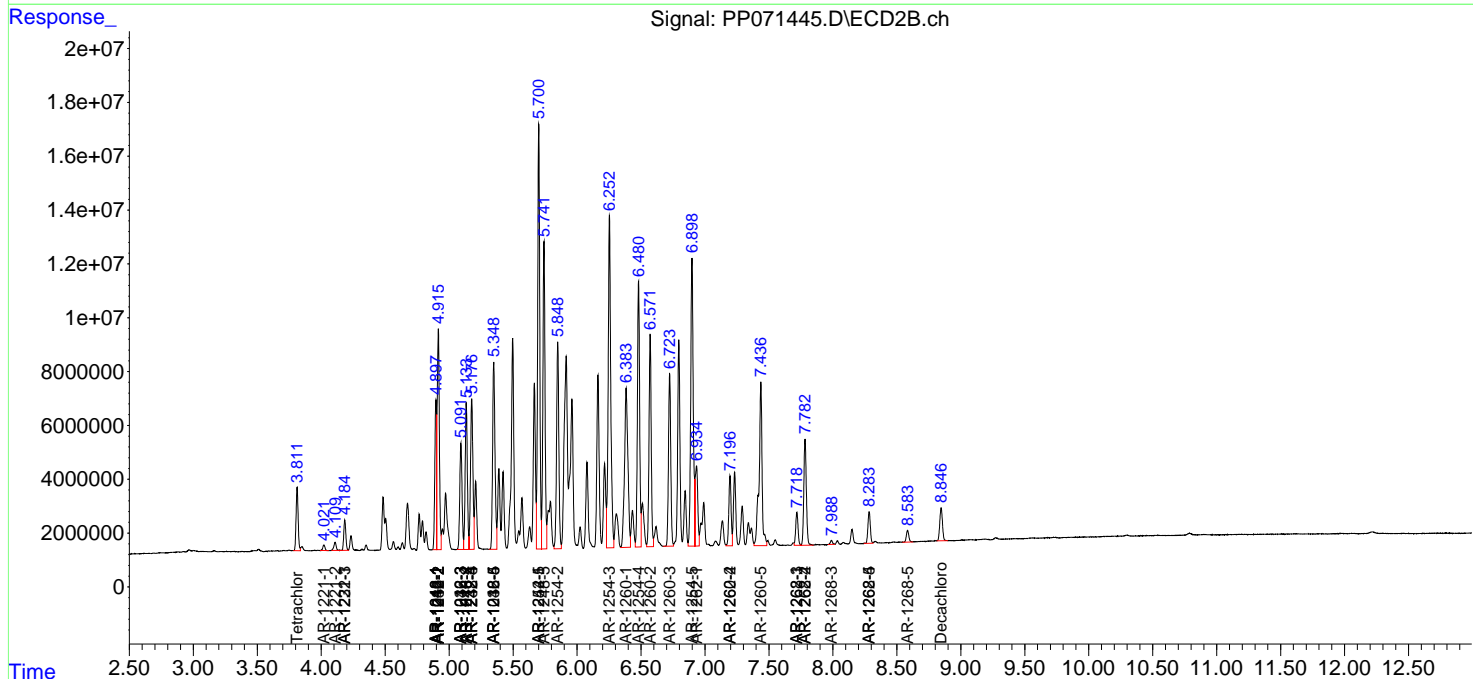
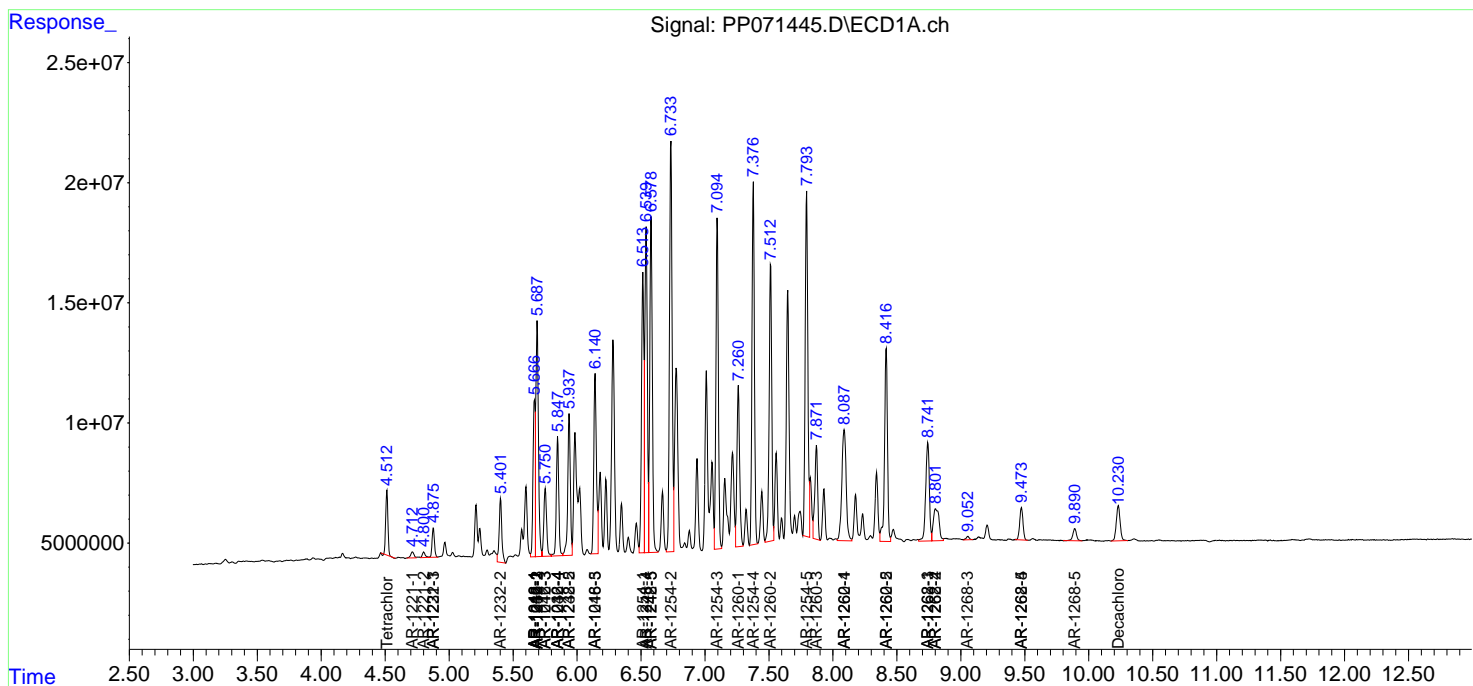
(f)=RT Delta > 1/2 Window (#)=Amounts differ by > 25% (m)=manual int.

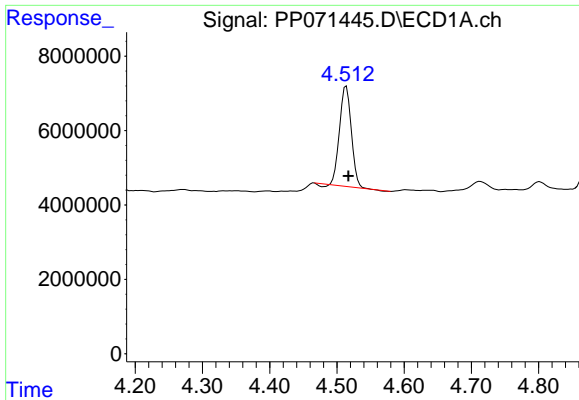
Data Path : Z:\pestpcbsrv\HPCHEM1\ECD_P\Data\PP042425\
 Data File : PP071445.D
 Signal(s) : Signal #1: ECD1A.ch Signal #2: ECD2B.ch
 Acq On : 24 Apr 2025 19:13
 Operator : YP\AJ
 Sample : Q1867-01MSD
 Misc :
 ALS Vial : 19 Sample Multiplier: 1

Instrument :
 ECD_P
 ClientSampleId :

Integration File signal 1: autoint1.e
 Integration File signal 2: autoint2.e
 Quant Time: Apr 25 00:27:32 2025
 Quant Method : Z:\pestpcbsrv\HPCHEM1\ECD_P\methods\PP042225.M
 Quant Title : GC EXTRACTABLES
 QLast Update : Wed Apr 23 05:02:06 2025
 Response via : Initial Calibration
 Integrator: ChemStation

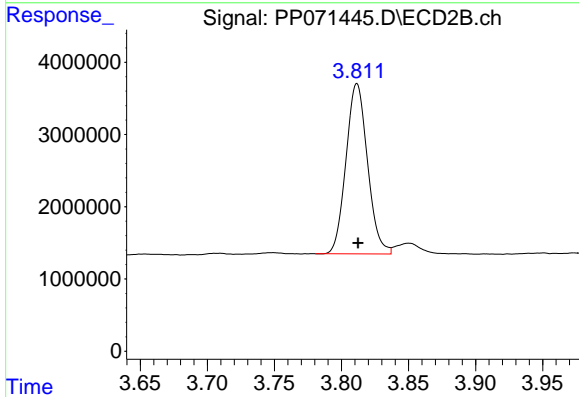
Volume Inj. : 2 µl
 Signal #1 Phase : ZB-MR1 Signal #2 Phase: ZB-MR2
 Signal #1 Info : 30Mx0.32mmx 0.50µ Signal #2 Info : 30M x 0.32mm x 0.25µm



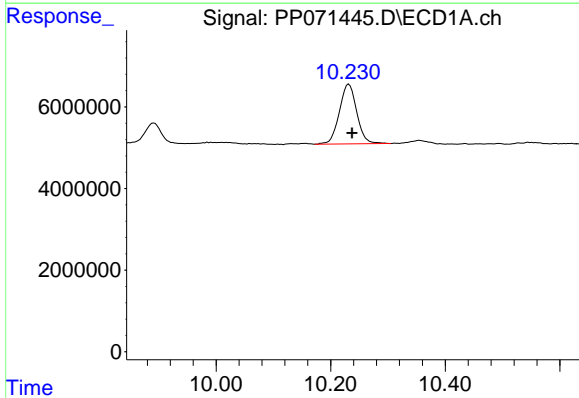


#1 Tetrachloro-m-xylene
 R.T.: 4.514 min
 Delta R.T.: -0.003 min
 Response: 32320962
 Conc: 16.30 ng/ml

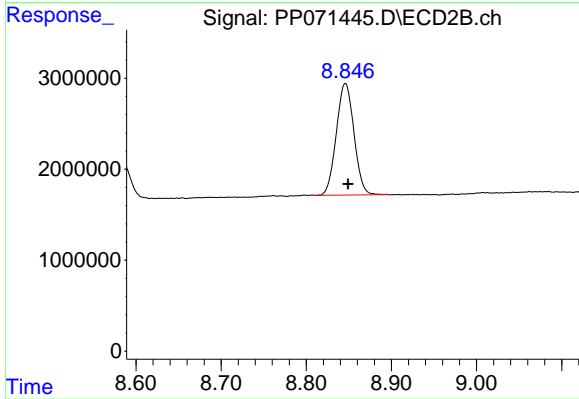
Instrument :
 ECD_P
 ClientSampleId :



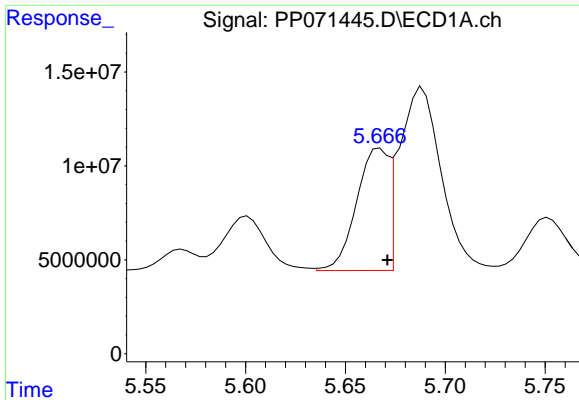
#1 Tetrachloro-m-xylene
 R.T.: 3.812 min
 Delta R.T.: 0.000 min
 Response: 26279135
 Conc: 18.66 ng/ml



#2 Decachlorobiphenyl
 R.T.: 10.232 min
 Delta R.T.: -0.006 min
 Response: 30918713
 Conc: 21.35 ng/ml



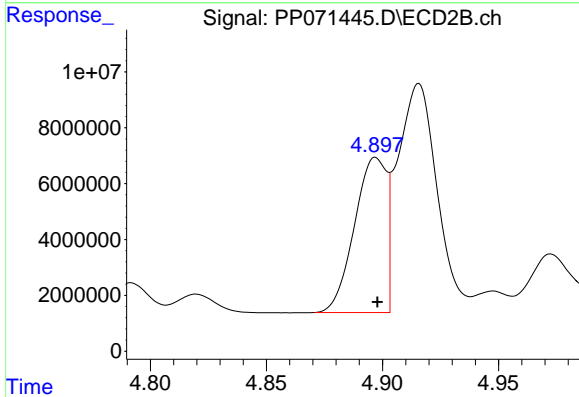
#2 Decachlorobiphenyl
 R.T.: 8.846 min
 Delta R.T.: -0.003 min
 Response: 17706947
 Conc: 20.19 ng/ml



#3 AR-1016-1

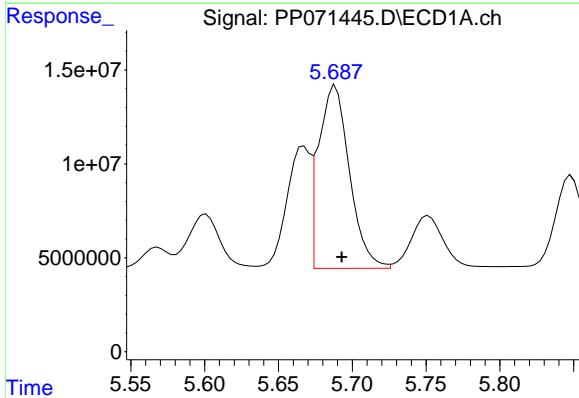
R.T.: 5.667 min
 Delta R.T.: -0.004 min
 Response: 72006157
 Conc: 1073.92 ng/ml

Instrument :
 ECD_P
 ClientSampleId :



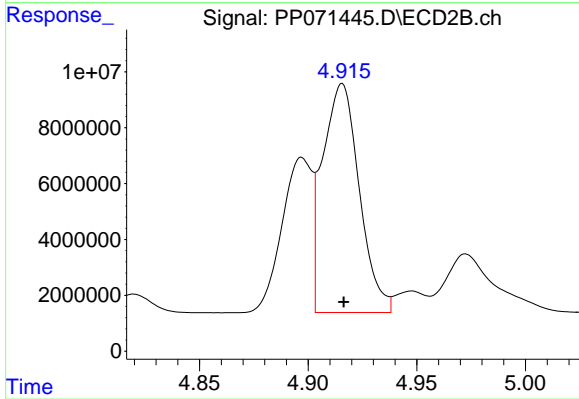
#3 AR-1016-1

R.T.: 4.897 min
 Delta R.T.: 0.000 min
 Response: 53258594
 Conc: 994.86 ng/ml



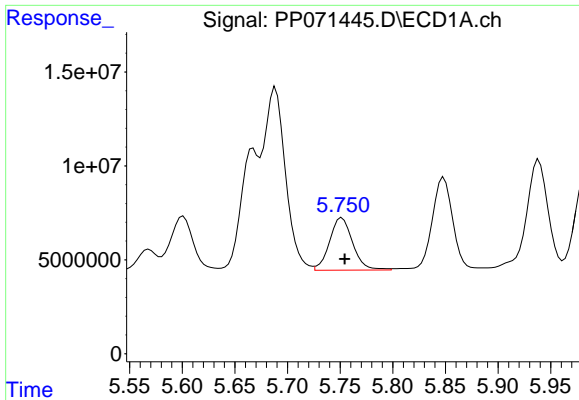
#4 AR-1016-2

R.T.: 5.689 min
 Delta R.T.: -0.004 min
 Response: 142077691
 Conc: 1384.39 ng/ml



#4 AR-1016-2

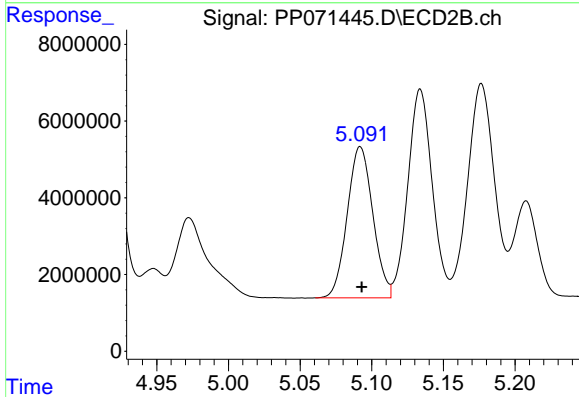
R.T.: 4.916 min
 Delta R.T.: 0.000 min
 Response: 96436379
 Conc: 1262.86 ng/ml



#5 AR-1016-3

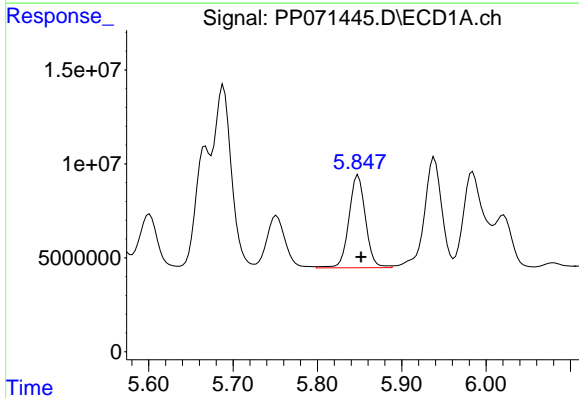
R.T.: 5.752 min
 Delta R.T.: -0.003 min
 Response: 42648803
 Conc: 691.82 ng/ml

Instrument :
 ECD_P
 ClientSampleId :



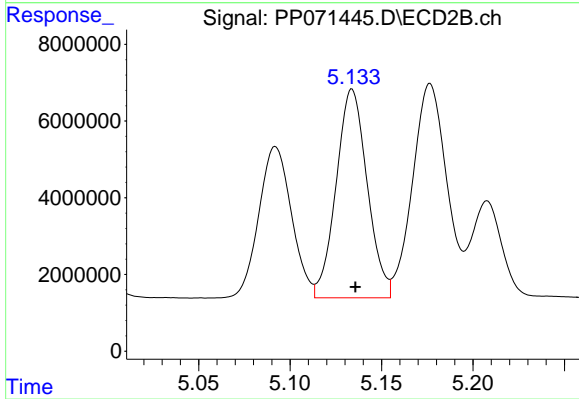
#5 AR-1016-3

R.T.: 5.092 min
 Delta R.T.: -0.001 min
 Response: 49075745
 Conc: 1162.65 ng/ml



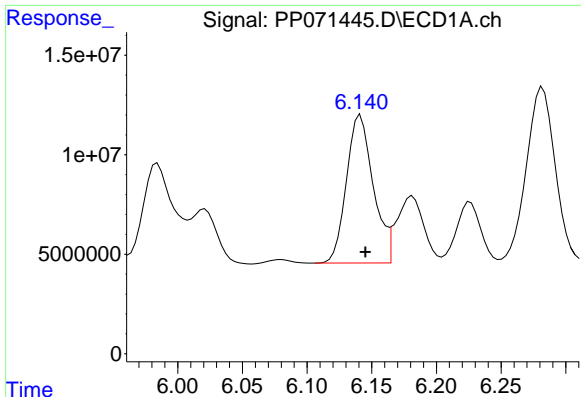
#6 AR-1016-4

R.T.: 5.848 min
 Delta R.T.: -0.003 min
 Response: 67319694
 Conc: 1312.32 ng/ml



#6 AR-1016-4

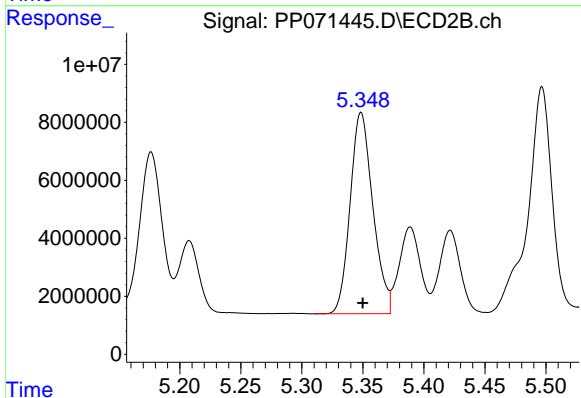
R.T.: 5.134 min
 Delta R.T.: -0.002 min
 Response: 64372815
 Conc: 1866.64 ng/ml



#7 AR-1016-5

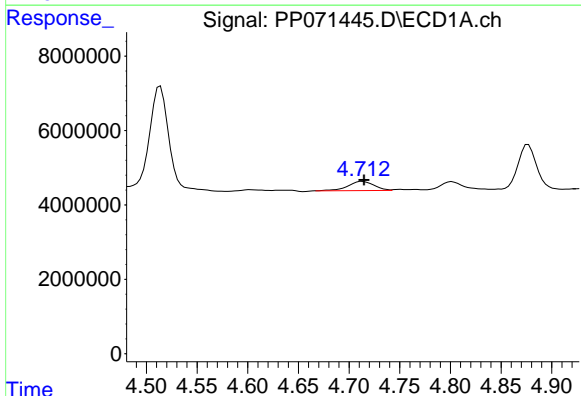
R.T.: 6.141 min
 Delta R.T.: -0.004 min
 Response: 106958564
 Conc: 2217.29 ng/ml

Instrument :
 ECD_P
 ClientSampleId :



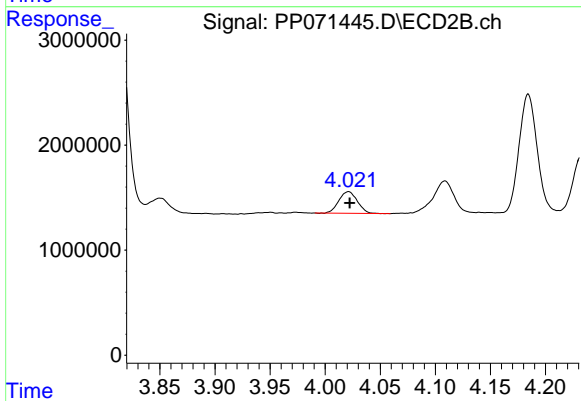
#7 AR-1016-5

R.T.: 5.349 min
 Delta R.T.: -0.001 min
 Response: 90038013
 Conc: 2025.73 ng/ml



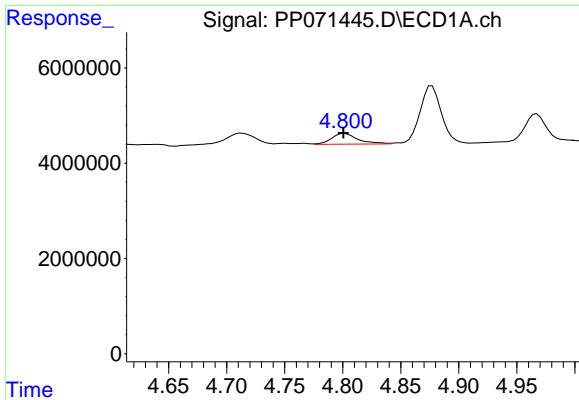
#8 AR-1221-1

R.T.: 4.713 min
 Delta R.T.: -0.002 min
 Response: 4443881
 Conc: 184.26 ng/ml



#8 AR-1221-1

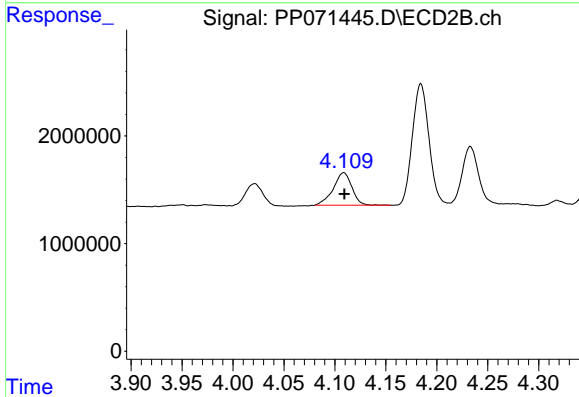
R.T.: 4.021 min
 Delta R.T.: -0.001 min
 Response: 2412165
 Conc: 109.67 ng/ml



#9 AR-1221-2

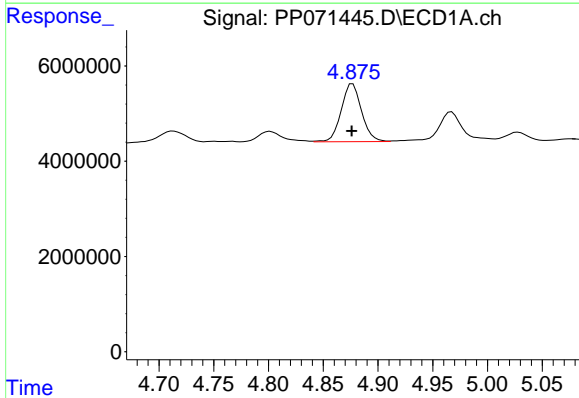
R.T.: 4.802 min
 Delta R.T.: 0.001 min
 Response: 3615121
 Conc: 200.65 ng/ml

Instrument :
 ECD_P
 ClientSampleId :



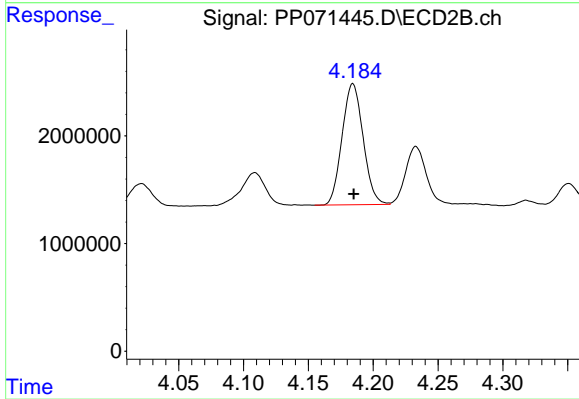
#9 AR-1221-2

R.T.: 4.109 min
 Delta R.T.: 0.000 min
 Response: 3852864
 Conc: 232.64 ng/ml



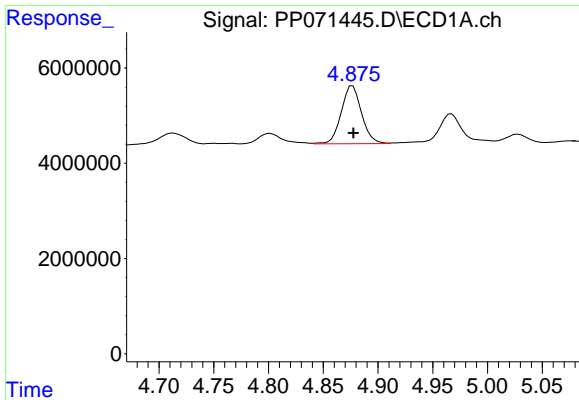
#10 AR-1221-3

R.T.: 4.877 min
 Delta R.T.: 0.000 min
 Response: 15691399
 Conc: 277.18 ng/ml



#10 AR-1221-3

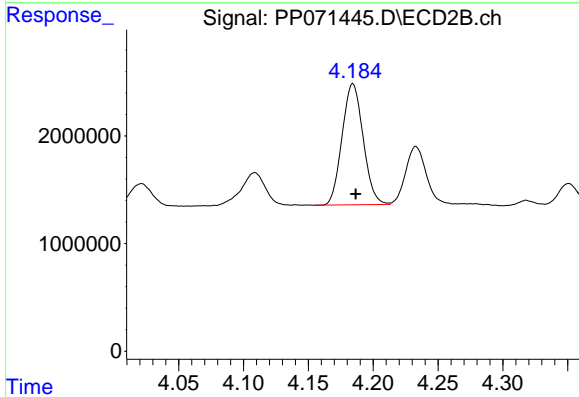
R.T.: 4.184 min
 Delta R.T.: 0.000 min
 Response: 12743209
 Conc: 262.87 ng/ml



#11 AR-1232-1

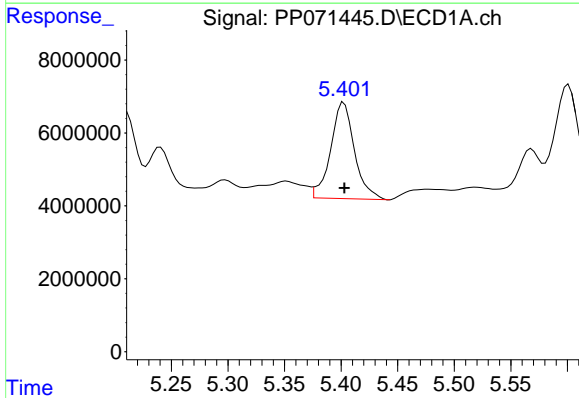
R.T.: 4.877 min
 Delta R.T.: 0.000 min
 Response: 15691399
 Conc: 349.38 ng/ml

Instrument :
 ECD_P
 ClientSampleId :



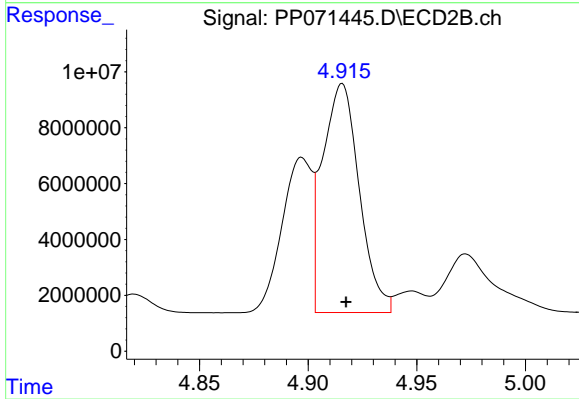
#11 AR-1232-1

R.T.: 4.184 min
 Delta R.T.: -0.002 min
 Response: 12743209
 Conc: 332.57 ng/ml



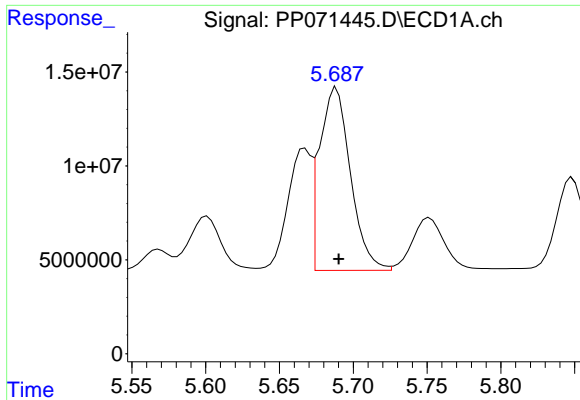
#12 AR-1232-2

R.T.: 5.403 min
 Delta R.T.: 0.000 min
 Response: 38736624
 Conc: 1683.24 ng/ml



#12 AR-1232-2

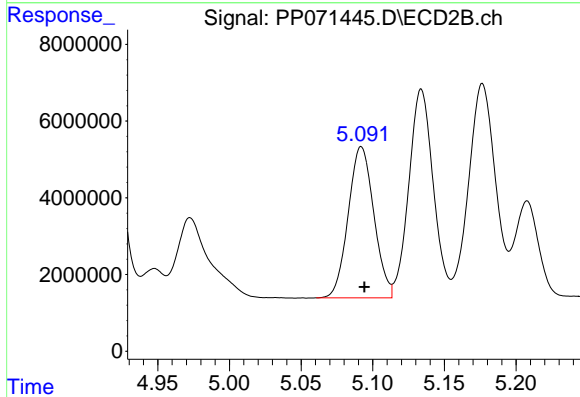
R.T.: 4.916 min
 Delta R.T.: -0.002 min
 Response: 96436379
 Conc: 2525.35 ng/ml



#13 AR-1232-3

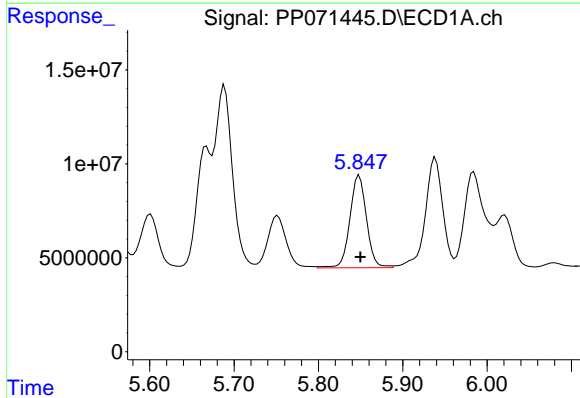
R.T.: 5.689 min
 Delta R.T.: -0.002 min
 Response: 142077691
 Conc: 3009.00 ng/ml

Instrument :
 ECD_P
 ClientSampleId :



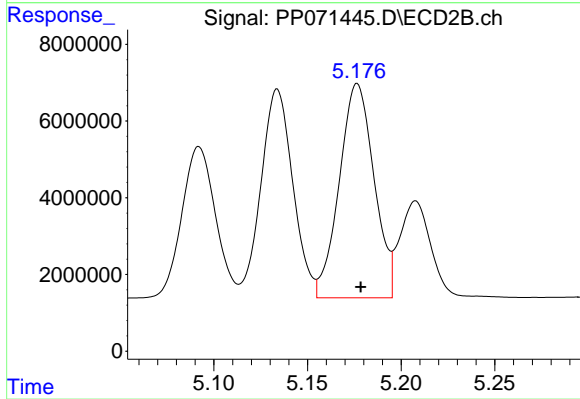
#13 AR-1232-3

R.T.: 5.092 min
 Delta R.T.: -0.002 min
 Response: 49075745
 Conc: 2317.60 ng/ml



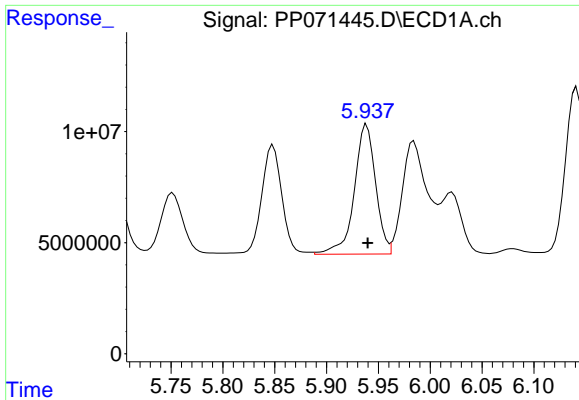
#14 AR-1232-4

R.T.: 5.848 min
 Delta R.T.: -0.001 min
 Response: 67319694
 Conc: 2904.30 ng/ml



#14 AR-1232-4

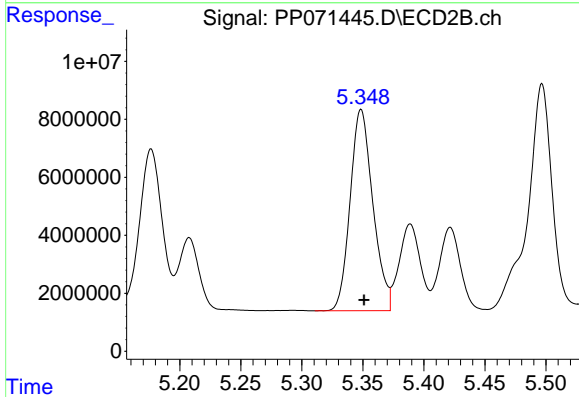
R.T.: 5.177 min
 Delta R.T.: -0.002 min
 Response: 72069843
 Conc: 3887.18 ng/ml



#15 AR-1232-5

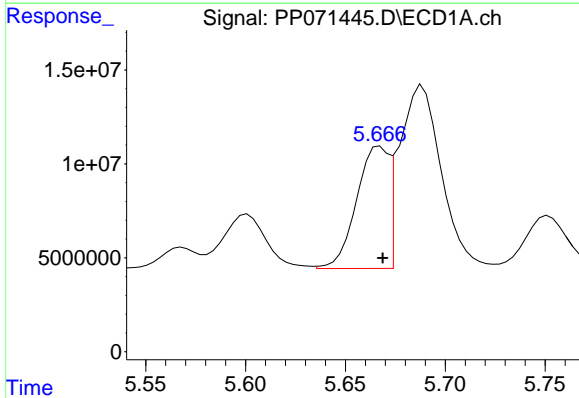
R.T.: 5.939 min
 Delta R.T.: 0.000 min
 Response: 83629672
 Conc: 5179.68 ng/ml

Instrument :
 ECD_P
 ClientSampleId :



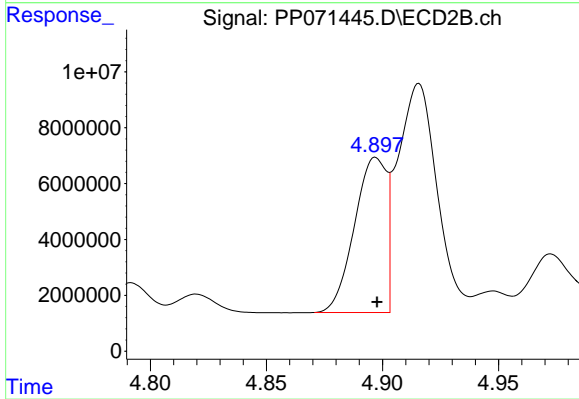
#15 AR-1232-5

R.T.: 5.349 min
 Delta R.T.: -0.003 min
 Response: 90038013
 Conc: 4524.10 ng/ml



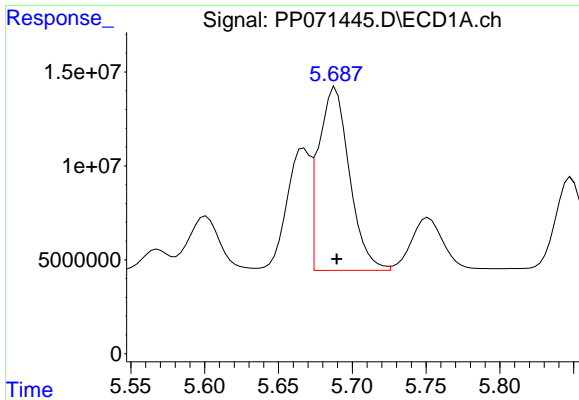
#16 AR-1242-1

R.T.: 5.667 min
 Delta R.T.: -0.001 min
 Response: 72006157
 Conc: 1314.67 ng/ml



#16 AR-1242-1

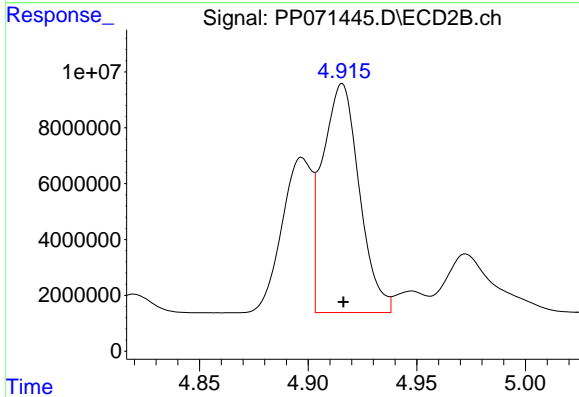
R.T.: 4.897 min
 Delta R.T.: 0.000 min
 Response: 53258594
 Conc: 1151.70 ng/ml



#17 AR-1242-2

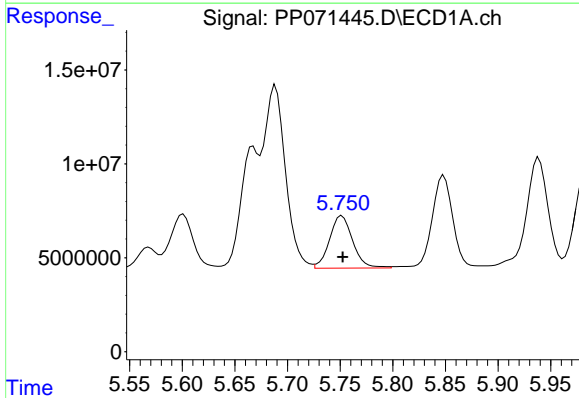
R.T.: 5.689 min
 Delta R.T.: 0.000 min
 Response: 142077691
 Conc: 1671.89 ng/ml

Instrument :
 ECD_P
 ClientSampleId :



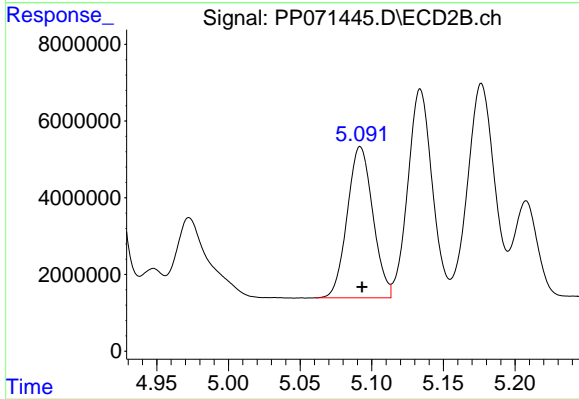
#17 AR-1242-2

R.T.: 4.916 min
 Delta R.T.: 0.000 min
 Response: 96436379
 Conc: 1460.65 ng/ml



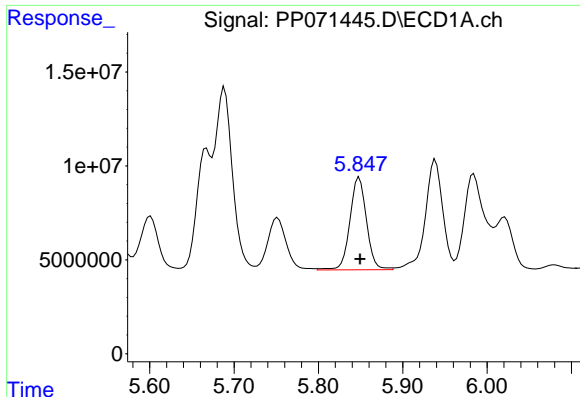
#18 AR-1242-3

R.T.: 5.752 min
 Delta R.T.: 0.000 min
 Response: 42648803
 Conc: 834.23 ng/ml



#18 AR-1242-3

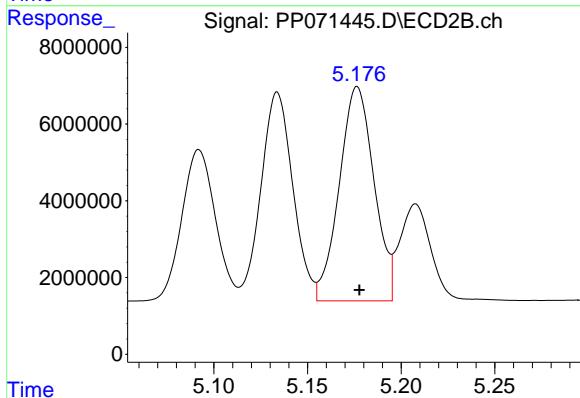
R.T.: 5.092 min
 Delta R.T.: -0.001 min
 Response: 49075745
 Conc: 1346.45 ng/ml



#19 AR-1242-4

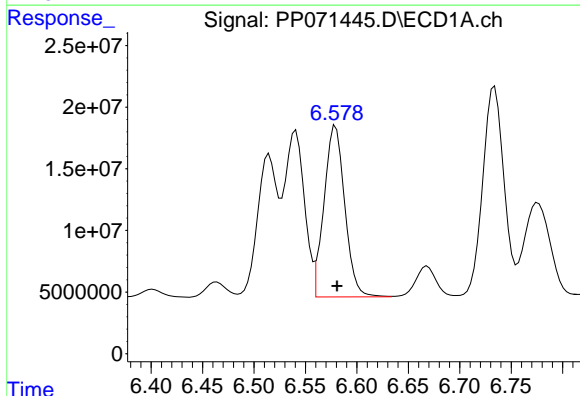
R.T.: 5.848 min
 Delta R.T.: 0.000 min
 Response: 67319694
 Conc: 1594.93 ng/ml

Instrument :
 ECD_P
 ClientSampleId :



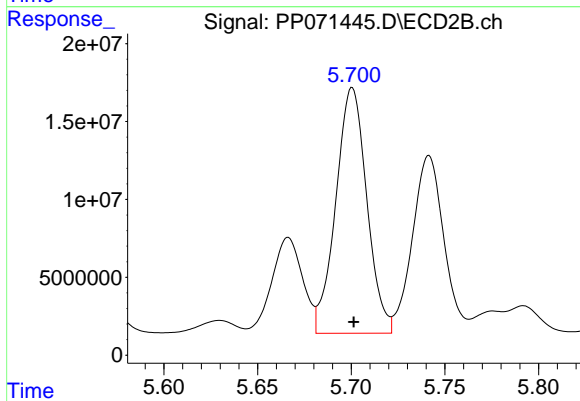
#19 AR-1242-4

R.T.: 5.177 min
 Delta R.T.: -0.001 min
 Response: 72069843
 Conc: 2018.17 ng/ml



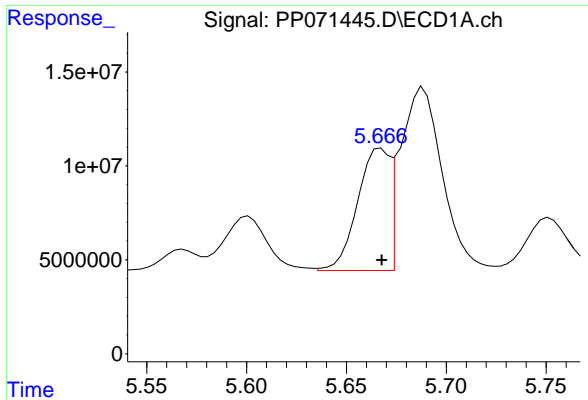
#20 AR-1242-5

R.T.: 6.579 min
 Delta R.T.: -0.001 min
 Response: 194774137
 Conc: 4207.65 ng/ml



#20 AR-1242-5

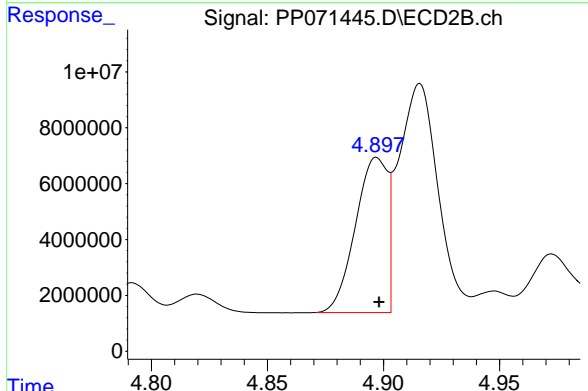
R.T.: 5.701 min
 Delta R.T.: 0.000 min
 Response: 181898018
 Conc: 4180.79 ng/ml



#21 AR-1248-1

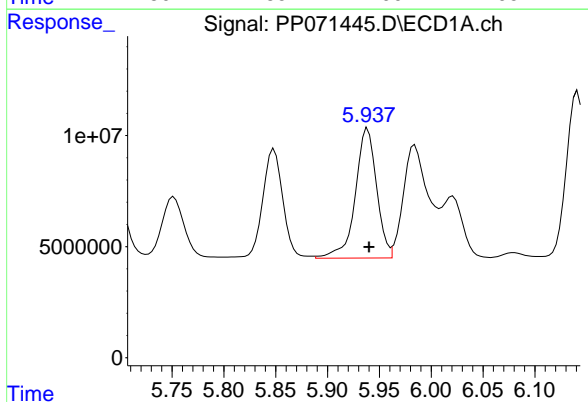
R.T.: 5.667 min
 Delta R.T.: 0.000 min
 Response: 72006157
 Conc: 1676.95 ng/ml

Instrument :
 ECD_P
 ClientSampleId :



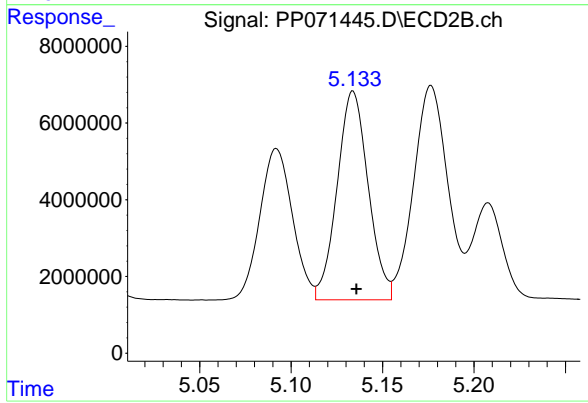
#21 AR-1248-1

R.T.: 4.897 min
 Delta R.T.: 0.000 min
 Response: 53258594
 Conc: 1475.04 ng/ml



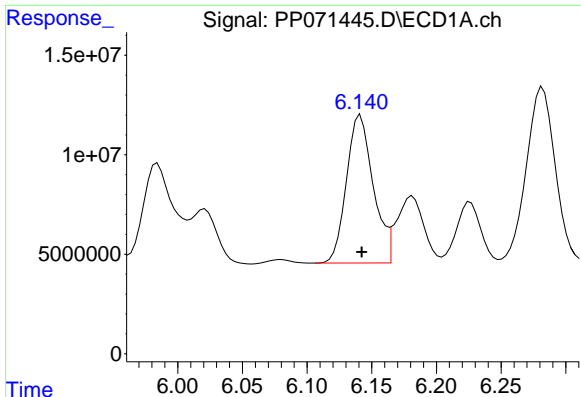
#22 AR-1248-2

R.T.: 5.939 min
 Delta R.T.: -0.001 min
 Response: 83629672
 Conc: 1383.85 ng/ml



#22 AR-1248-2

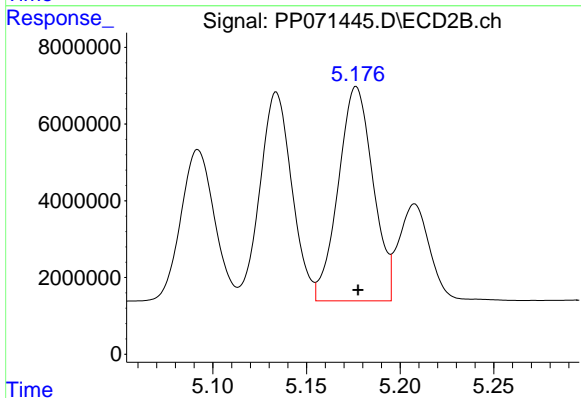
R.T.: 5.134 min
 Delta R.T.: -0.002 min
 Response: 64372815
 Conc: 1314.74 ng/ml



#23 AR-1248-3

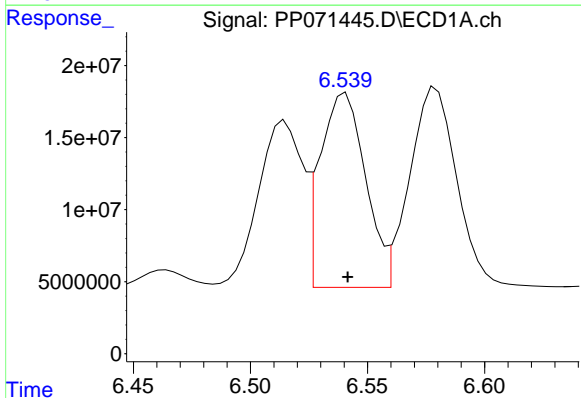
R.T.: 6.141 min
 Delta R.T.: 0.000 min
 Response: 106958564
 Conc: 1601.55 ng/m

Instrument :
 ECD_P
 ClientSampleId :



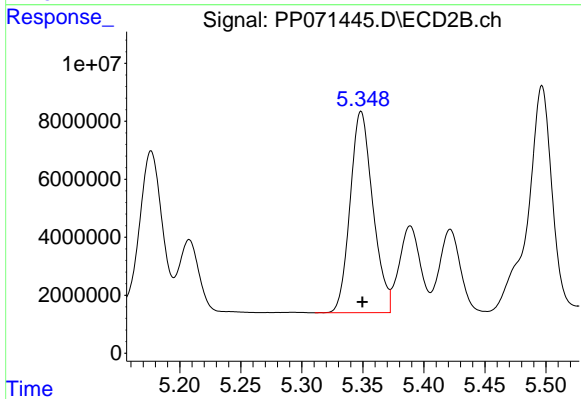
#23 AR-1248-3

R.T.: 5.177 min
 Delta R.T.: -0.001 min
 Response: 72069843
 Conc: 1410.77 ng/ml



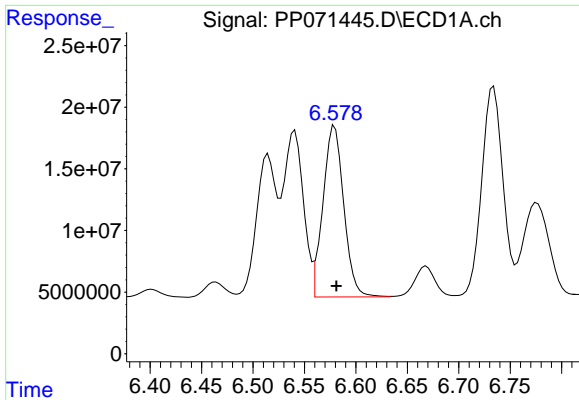
#24 AR-1248-4

R.T.: 6.541 min
 Delta R.T.: 0.000 min
 Response: 181722297
 Conc: 2147.74 ng/ml



#24 AR-1248-4

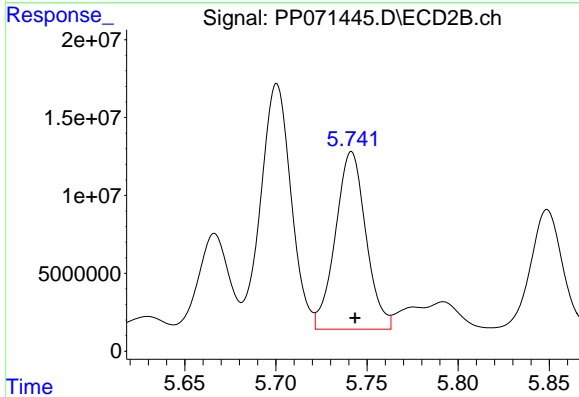
R.T.: 5.349 min
 Delta R.T.: -0.001 min
 Response: 90038013
 Conc: 1484.37 ng/ml



#25 AR-1248-5

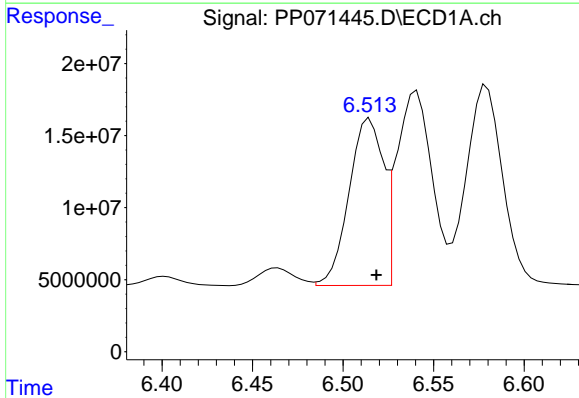
R.T.: 6.579 min
 Delta R.T.: -0.002 min
 Response: 194774137
 Conc: 2451.58 ng/ml

Instrument :
 ECD_P
 ClientSampleId :



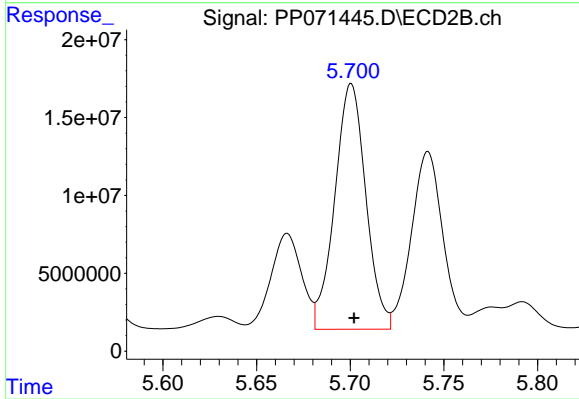
#25 AR-1248-5

R.T.: 5.742 min
 Delta R.T.: -0.002 min
 Response: 133116113
 Conc: 2283.65 ng/ml



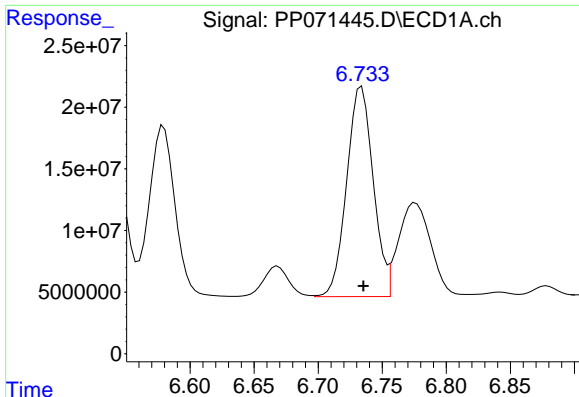
#26 AR-1254-1

R.T.: 6.515 min
 Delta R.T.: -0.004 min
 Response: 152585633
 Conc: 1861.91 ng/ml



#26 AR-1254-1

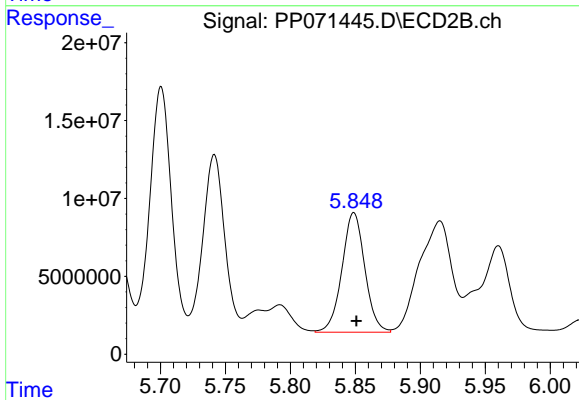
R.T.: 5.701 min
 Delta R.T.: -0.001 min
 Response: 181898018
 Conc: 1990.12 ng/ml



#27 AR-1254-2

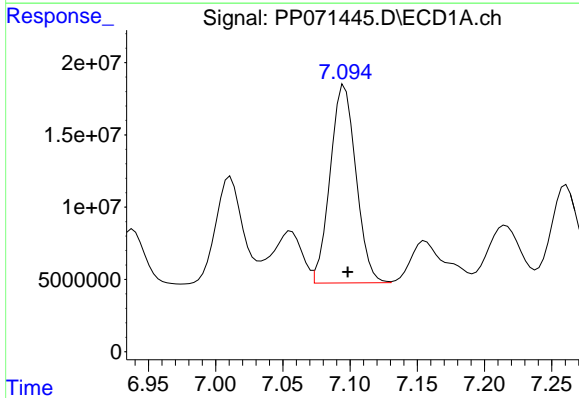
R.T.: 6.734 min
 Delta R.T.: -0.001 min
 Response: 245229897
 Conc: 1929.79 ng/ml

Instrument :
 ECD_P
 ClientSampleId :



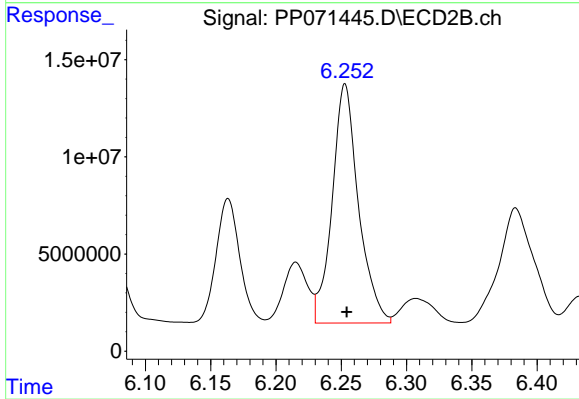
#27 AR-1254-2

R.T.: 5.849 min
 Delta R.T.: -0.002 min
 Response: 94003827
 Conc: 1194.27 ng/ml



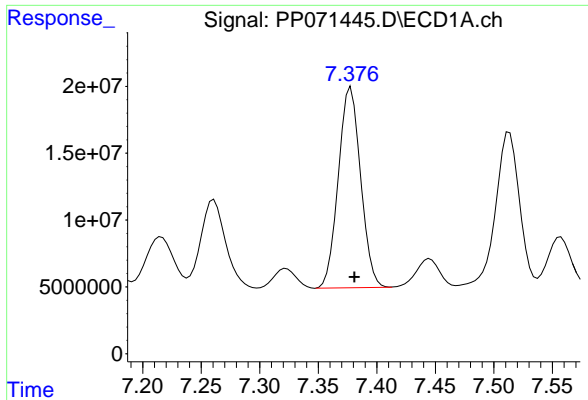
#28 AR-1254-3

R.T.: 7.096 min
 Delta R.T.: -0.002 min
 Response: 182560330
 Conc: 1428.77 ng/ml



#28 AR-1254-3

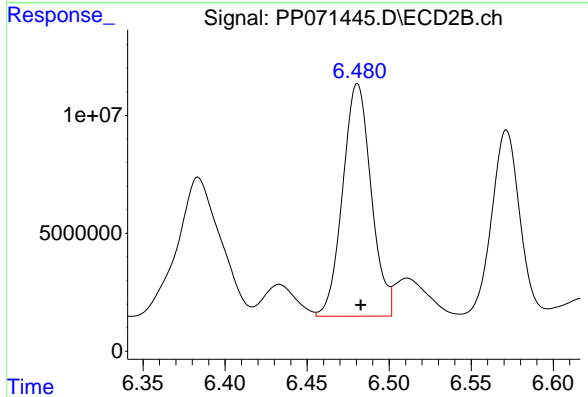
R.T.: 6.253 min
 Delta R.T.: -0.001 min
 Response: 172540082
 Conc: 1455.93 ng/ml



#29 AR-1254-4

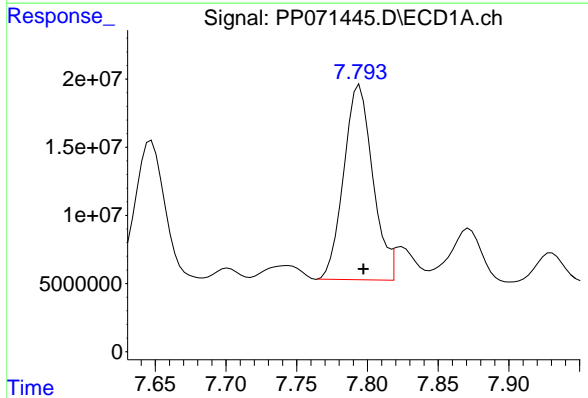
R.T.: 7.378 min
 Delta R.T.: -0.003 min
 Response: 198982889
 Conc: 1693.28 ng/m

Instrument :
 ECD_P
 ClientSampleId :



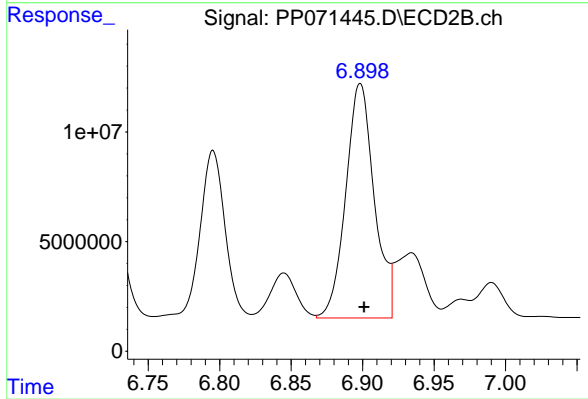
#29 AR-1254-4

R.T.: 6.481 min
 Delta R.T.: -0.002 min
 Response: 119343755
 Conc: 1546.59 ng/ml



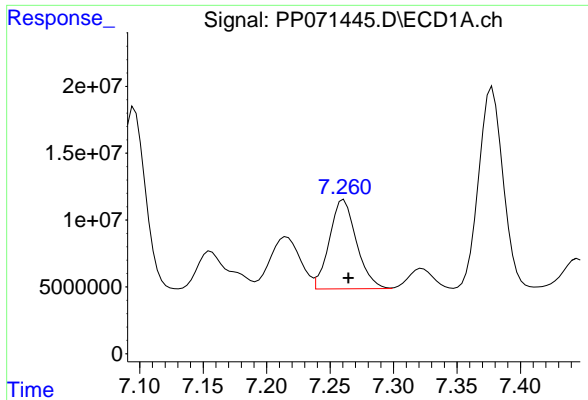
#30 AR-1254-5

R.T.: 7.795 min
 Delta R.T.: -0.003 min
 Response: 203980607
 Conc: 1893.44 ng/ml



#30 AR-1254-5

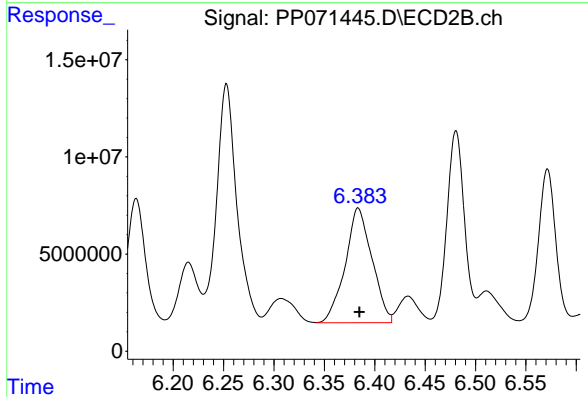
R.T.: 6.898 min
 Delta R.T.: -0.003 min
 Response: 148451105
 Conc: 1463.04 ng/ml



#31 AR-1260-1

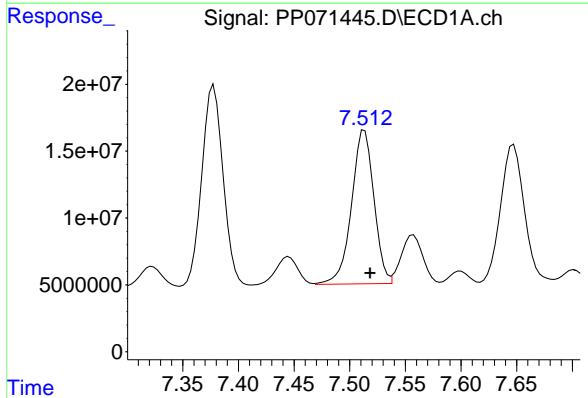
R.T.: 7.261 min
 Delta R.T.: -0.004 min
 Response: 99295078
 Conc: 1034.06 ng/ml

Instrument :
 ECD_P
 ClientSampleId :



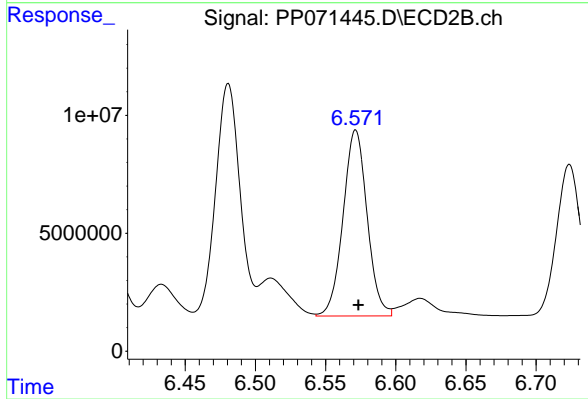
#31 AR-1260-1

R.T.: 6.384 min
 Delta R.T.: -0.001 min
 Response: 108924809
 Conc: 1506.58 ng/ml



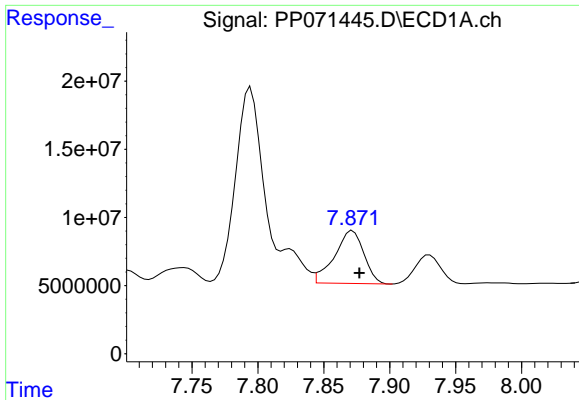
#32 AR-1260-2

R.T.: 7.513 min
 Delta R.T.: -0.005 min
 Response: 160946733
 Conc: 1124.89 ng/ml



#32 AR-1260-2

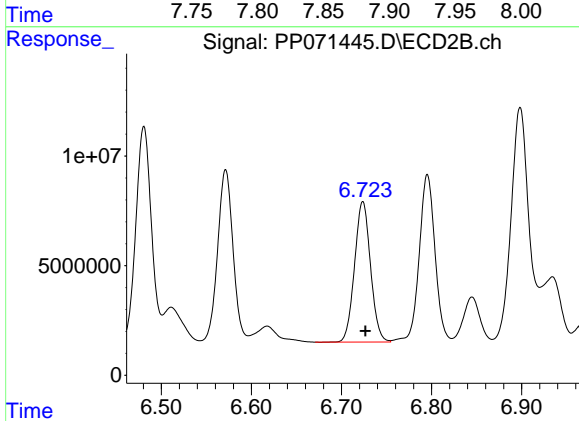
R.T.: 6.571 min
 Delta R.T.: -0.002 min
 Response: 94036611
 Conc: 1075.18 ng/ml



#33 AR-1260-3

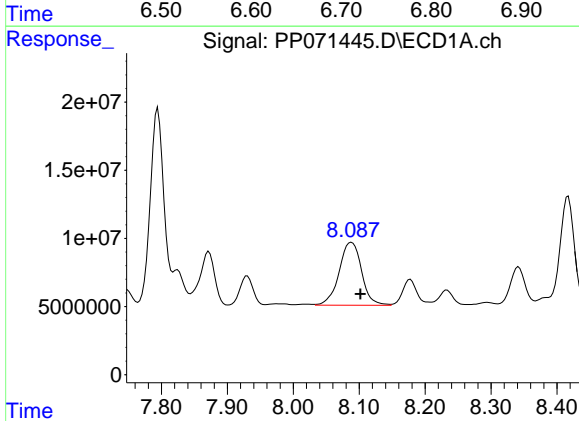
R.T.: 7.872 min
 Delta R.T.: -0.005 min
 Response: 60032711
 Conc: 535.51 ng/ml

Instrument :
 ECD_P
 ClientSampleId :



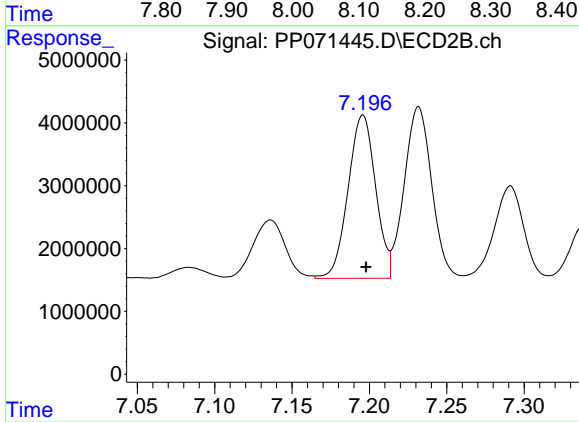
#33 AR-1260-3

R.T.: 6.724 min
 Delta R.T.: -0.003 min
 Response: 78996185
 Conc: 1007.76 ng/ml



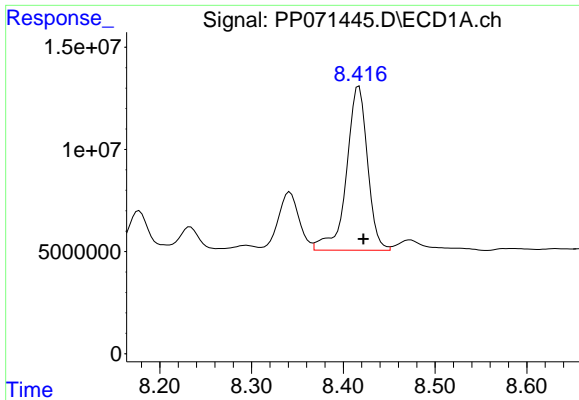
#34 AR-1260-4

R.T.: 8.088 min
 Delta R.T.: -0.013 min
 Response: 109186496
 Conc: 967.41 ng/ml



#34 AR-1260-4

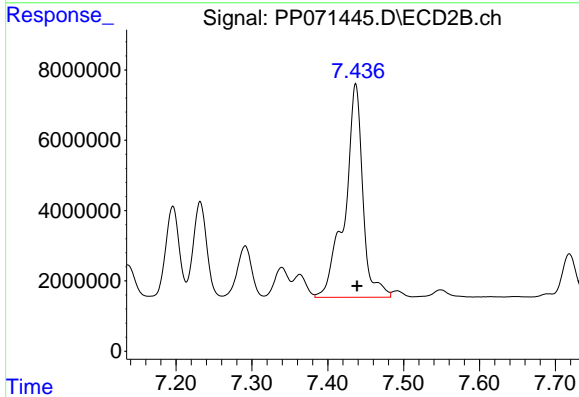
R.T.: 7.196 min
 Delta R.T.: -0.002 min
 Response: 32162525
 Conc: 509.62 ng/ml



#35 AR-1260-5

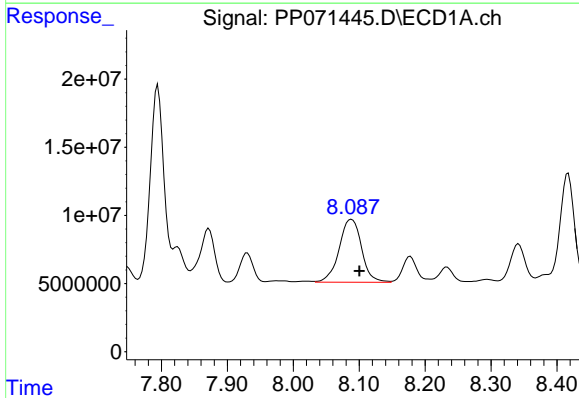
R.T.: 8.417 min
Delta R.T.: -0.005 min
Response: 127943145
Conc: 564.69 ng/ml

Instrument :
ECD_P
ClientSampleId :



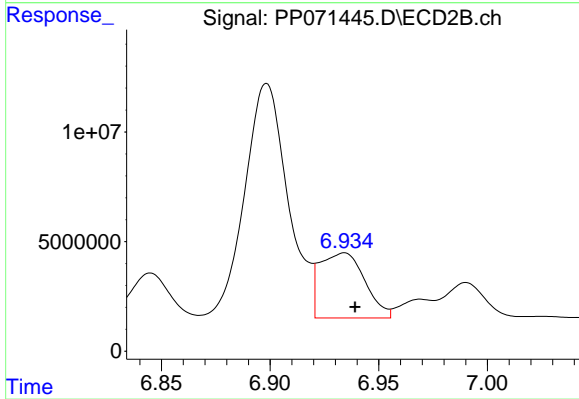
#35 AR-1260-5

R.T.: 7.437 min
Delta R.T.: -0.002 min
Response: 100135014
Conc: 664.13 ng/ml



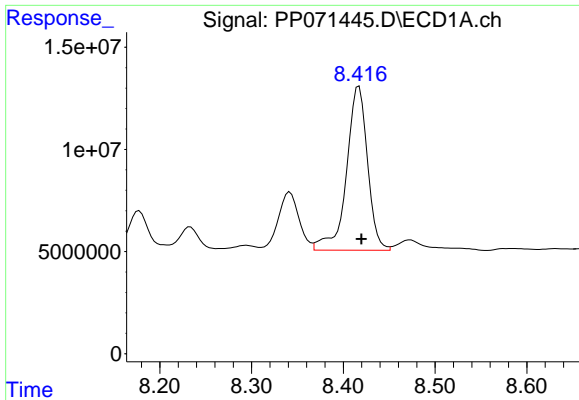
#36 AR-1262-1

R.T.: 8.088 min
Delta R.T.: -0.012 min
Response: 109186496
Conc: 755.66 ng/ml



#36 AR-1262-1

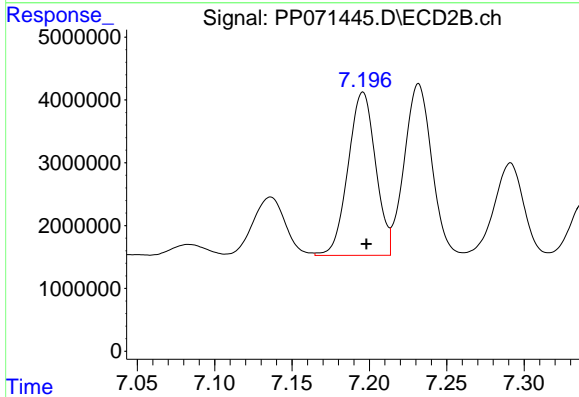
R.T.: 6.934 min
Delta R.T.: -0.005 min
Response: 42711022
Conc: 375.94 ng/ml



#37 AR-1262-2

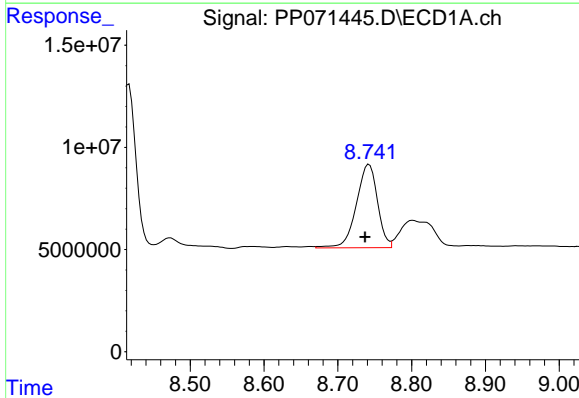
R.T.: 8.417 min
 Delta R.T.: -0.003 min
 Response: 127943145
 Conc: 466.63 ng/ml

Instrument :
 ECD_P
 ClientSampleId :



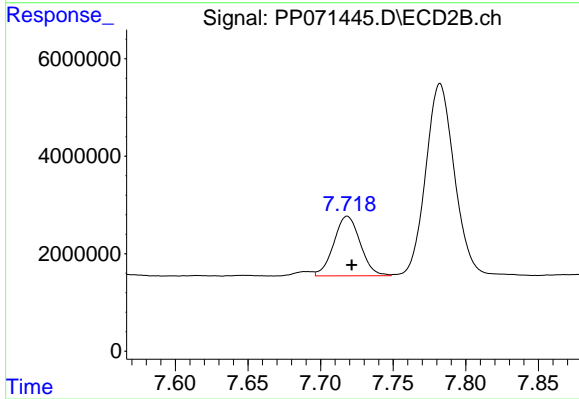
#37 AR-1262-2

R.T.: 7.196 min
 Delta R.T.: -0.002 min
 Response: 32162525
 Conc: 348.31 ng/ml



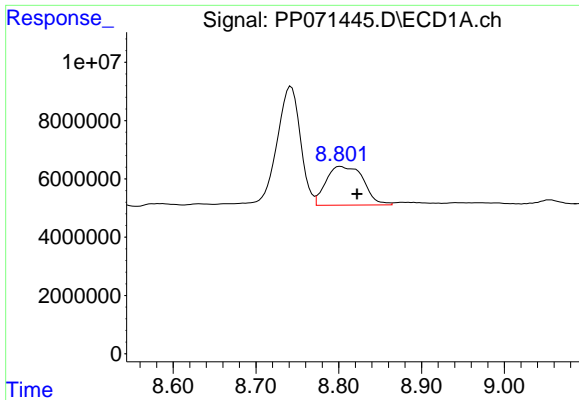
#38 AR-1262-3

R.T.: 8.742 min
 Delta R.T.: 0.005 min
 Response: 81347797
 Conc: 444.82 ng/ml



#38 AR-1262-3

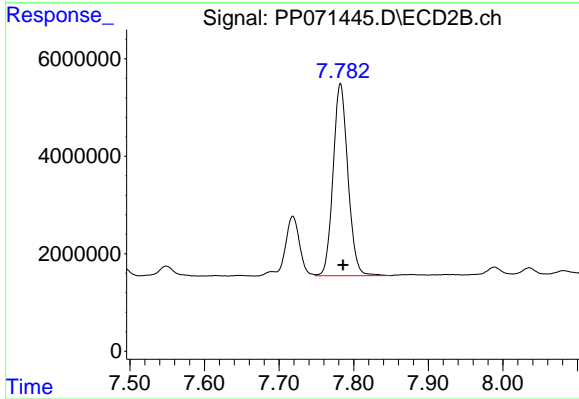
R.T.: 7.718 min
 Delta R.T.: -0.003 min
 Response: 15558352
 Conc: 205.54 ng/ml



#39 AR-1262-4

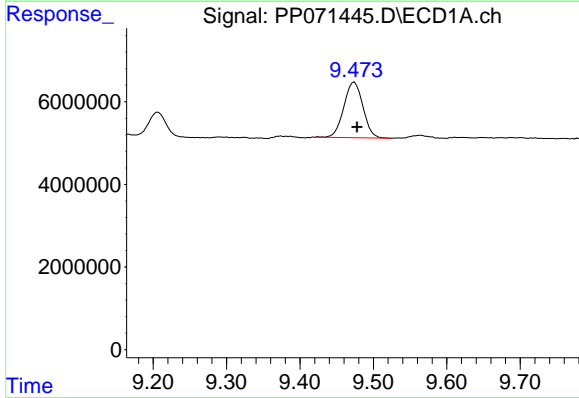
R.T.: 8.802 min
 Delta R.T.: -0.020 min
 Response: 41719198
 Conc: 310.85 ng/ml

Instrument :
 ECD_P
 ClientSampleId :



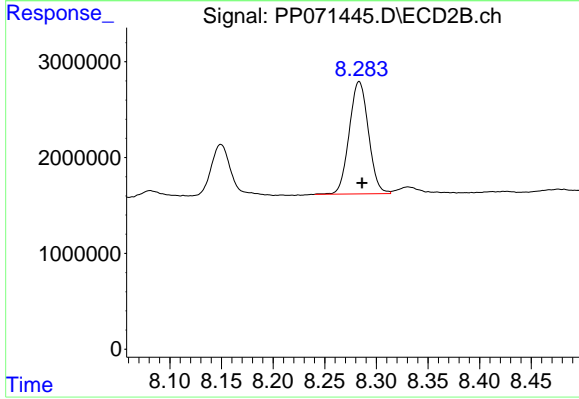
#39 AR-1262-4

R.T.: 7.782 min
 Delta R.T.: -0.003 min
 Response: 54405629
 Conc: 435.85 ng/ml



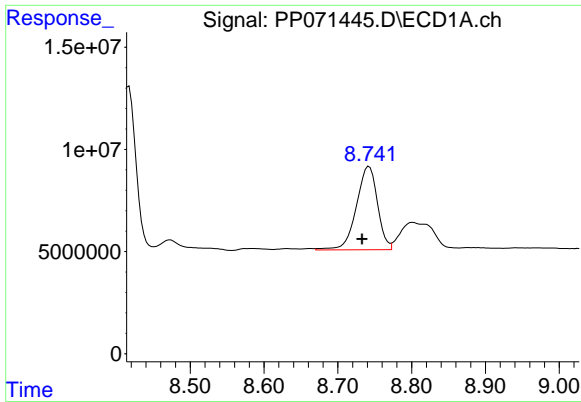
#40 AR-1262-5

R.T.: 9.474 min
 Delta R.T.: -0.004 min
 Response: 24357475
 Conc: 276.28 ng/ml



#40 AR-1262-5

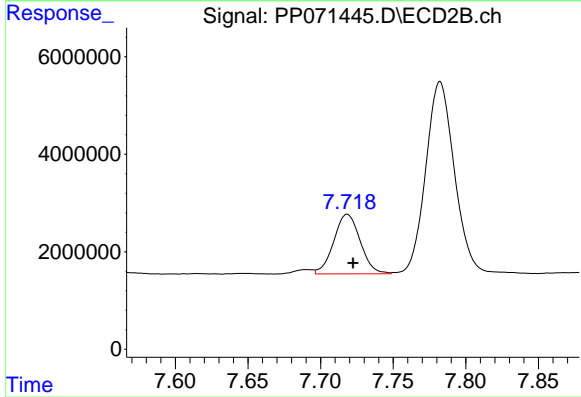
R.T.: 8.283 min
 Delta R.T.: -0.003 min
 Response: 15180814
 Conc: 273.56 ng/ml



#41 AR-1268-1

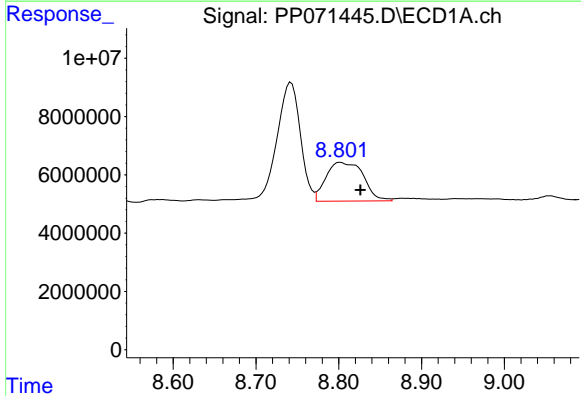
R.T.: 8.742 min
 Delta R.T.: 0.010 min
 Response: 81347797
 Conc: 261.84 ng/ml

Instrument :
 ECD_P
 ClientSampleId :



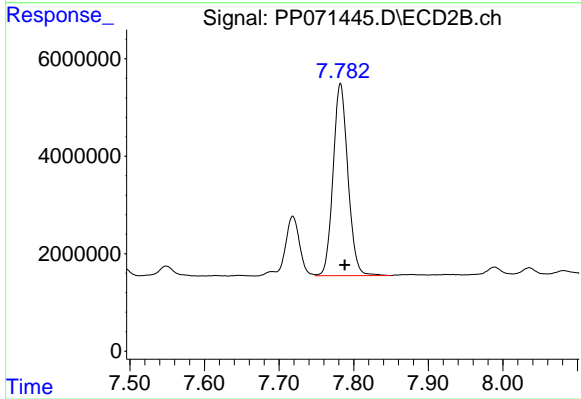
#41 AR-1268-1

R.T.: 7.718 min
 Delta R.T.: -0.004 min
 Response: 15558352
 Conc: 77.91 ng/ml



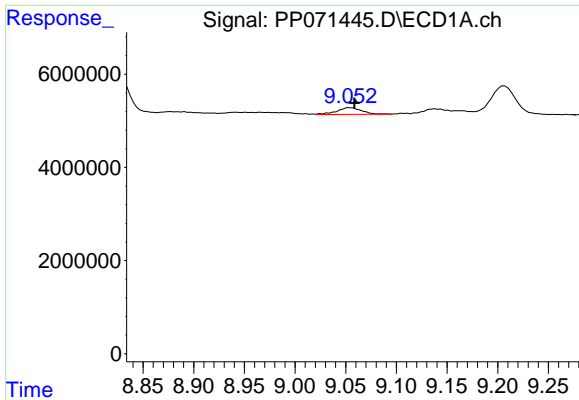
#42 AR-1268-2

R.T.: 8.802 min
 Delta R.T.: -0.024 min
 Response: 41719198
 Conc: 161.86 ng/ml



#42 AR-1268-2

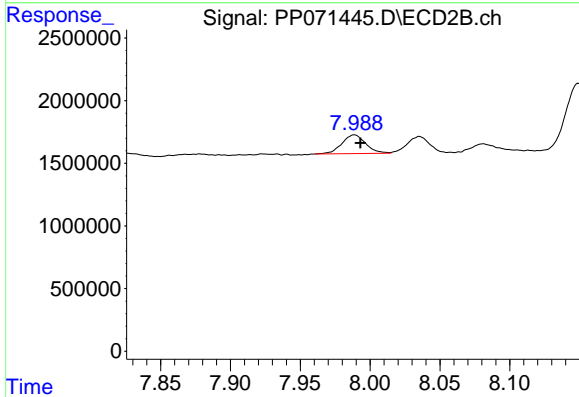
R.T.: 7.782 min
 Delta R.T.: -0.006 min
 Response: 54405629
 Conc: 321.88 ng/ml



#43 AR-1268-3

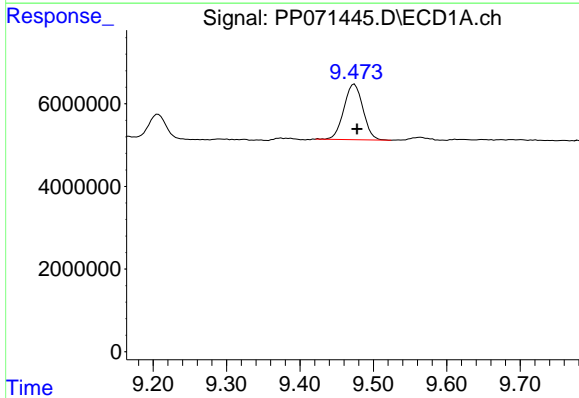
R.T.: 9.055 min
 Delta R.T.: -0.004 min
 Response: 2472253
 Conc: 11.09 ng/ml

Instrument :
 ECD_P
 ClientSampleId :



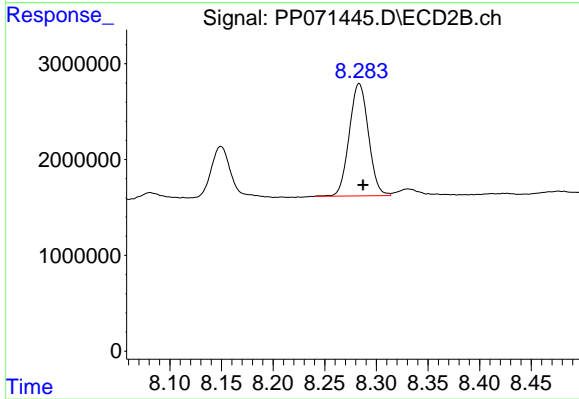
#43 AR-1268-3

R.T.: 7.989 min
 Delta R.T.: -0.004 min
 Response: 1767296
 Conc: 12.70 ng/ml



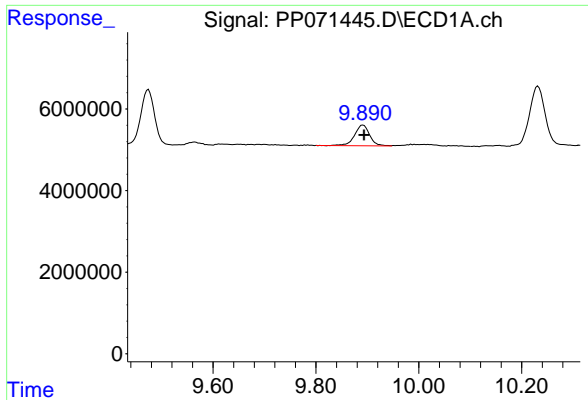
#44 AR-1268-4

R.T.: 9.474 min
 Delta R.T.: -0.004 min
 Response: 24357475
 Conc: 258.96 ng/ml



#44 AR-1268-4

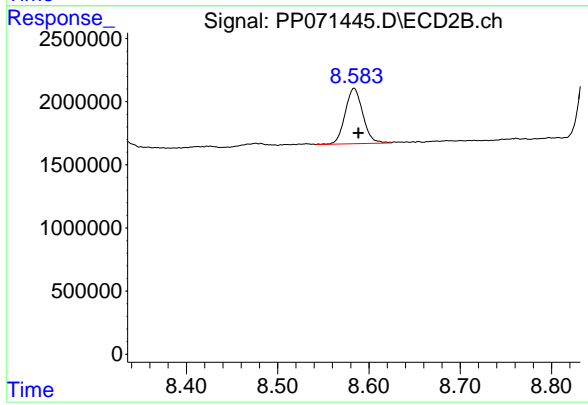
R.T.: 8.283 min
 Delta R.T.: -0.004 min
 Response: 15180814
 Conc: 249.70 ng/ml



#45 AR-1268-5

R.T.: 9.892 min
Delta R.T.: -0.002 min
Response: 10311451
Conc: 17.24 ng/ml

Instrument :
ECD_P
ClientSampleId :



#45 AR-1268-5

R.T.: 8.584 min
Delta R.T.: -0.005 min
Response: 5914858
Conc: 15.84 ng/ml