

Data Path : Z:\pestpcbsrv\HPCHEM1\ECD_P\Data\PP042519\
 Data File : PP029993.D
 Signal(s) : Signal #1: ECD1A.CH Signal #2: ECD2B.CH
 Acq On : 25 Apr 2019 13:04
 Operator : EI/SJ
 Sample : HSTDICC200
 Misc :
 ALS Vial : 3 Sample Multiplier: 1

Instrument :
 ECD_P
 ClientSampleId :
 HSTDICC200

Integration File signal 1: autoint1.e
 Integration File signal 2: autoint2.e
 Quant Time: Apr 26 10:01:02 2019
 Quant Method : Z:\pestpcbsrv\HPCHEM1\ECD_P\methods\PP042519.M
 Quant Title : 8080.M
 QLast Update : Fri Apr 26 09:59:52 2019
 Response via : Initial Calibration
 Integrator: ChemStation 6890 Scale Mode: Large solvent peaks clipped

Volume Inj. : 2 µl
 Signal #1 Phase : ZB-CLPesticides-1 Signal #2 Phase: ZB-CLPesticides-2
 Signal #1 Info : 30M x 0.32mm x0.5 Signal #2 Info : 30M x 0.32mm x 0.25µm

Compound	RT#1	RT#2	Resp#1	Resp#2	ng/ml	ng/ml

System Monitoring Compounds						
4) S 2,4-DCAA	12.153	12.223	101.5E6	88508225	243.338	235.263
Target Compounds						
1) T Dalapon	3.233	2.980	165.2E6	110.8E6	217.818	212.949
2) T 3,5-DICHL...	10.541	10.313	162.2E6	106.6E6	226.622	216.216
3) T 4-Nitroph...	11.755	11.387	79355500	40727675	215.611	197.991
5) T DICAMBA	12.476	12.528	426.0E6	315.2E6	221.148	213.771
6) T MCPP	12.806	12.715	20322065	13911334	19.004	18.317
7) T MCPA	13.062	13.108	34165524	21995319	21.743	18.343
8) T DICHLORPROP	13.680	13.653	104.3E6	78715003	235.257	223.202
9) T 2,4-D	14.049	14.150	84768304	83068789	179.712	209.322
10) T Pentachlo...	14.459	14.762	1709.1E6	1267.2E6	225.881	225.335
11) T 2,4,5-TP ...	15.322	15.329	565.7E6	437.0E6	222.867	217.251
12) T 2,4,5-T	15.728	15.978	506.3E6	432.8E6	216.527	218.994
13) T 2,4-DB	16.487	16.577	63752968	46693624	221.127	209.369
14) T DINOSEB	18.006	16.997	313.5E6	242.4E6	205.389	200.029
15) T Picloram	17.789	18.366	594.7E6	426.0E6	175.042	163.854
16) T DCPA	18.359	18.242	748.7E6	566.4E6	221.499	219.637

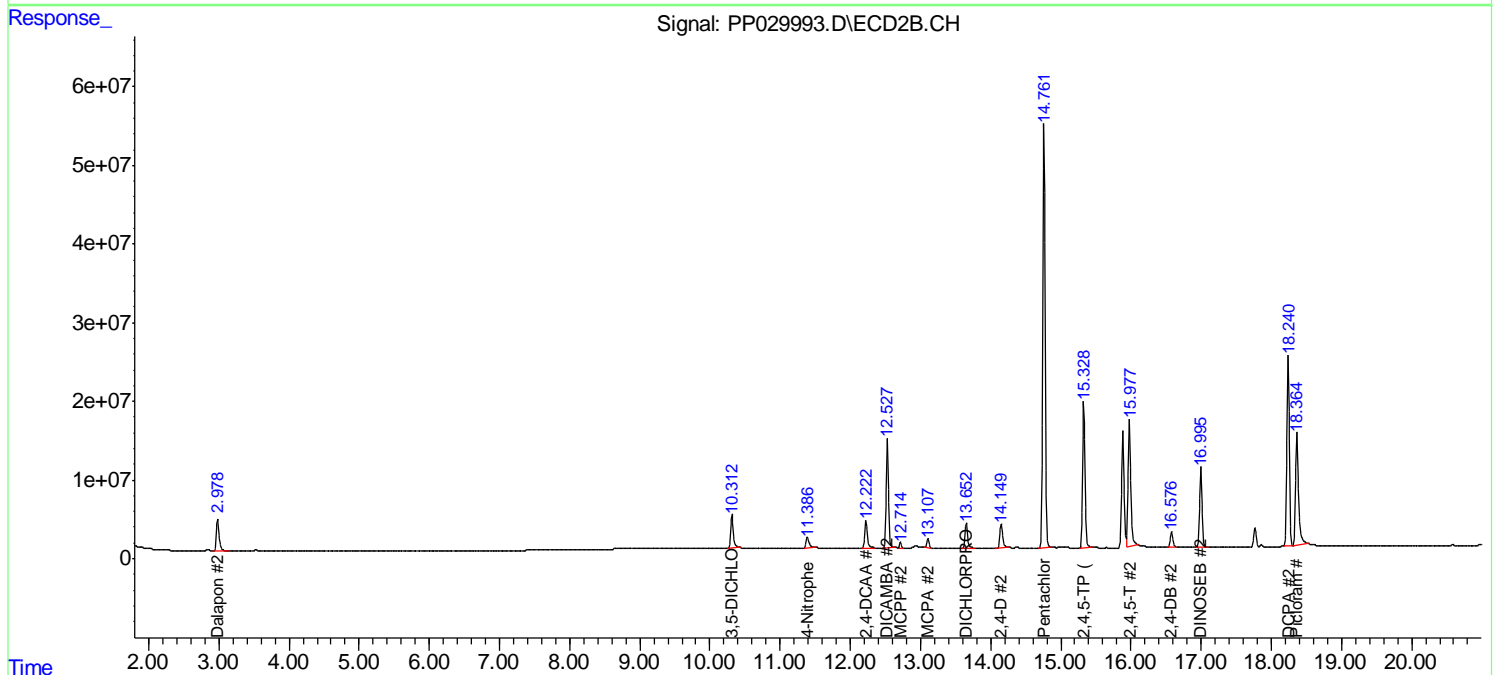
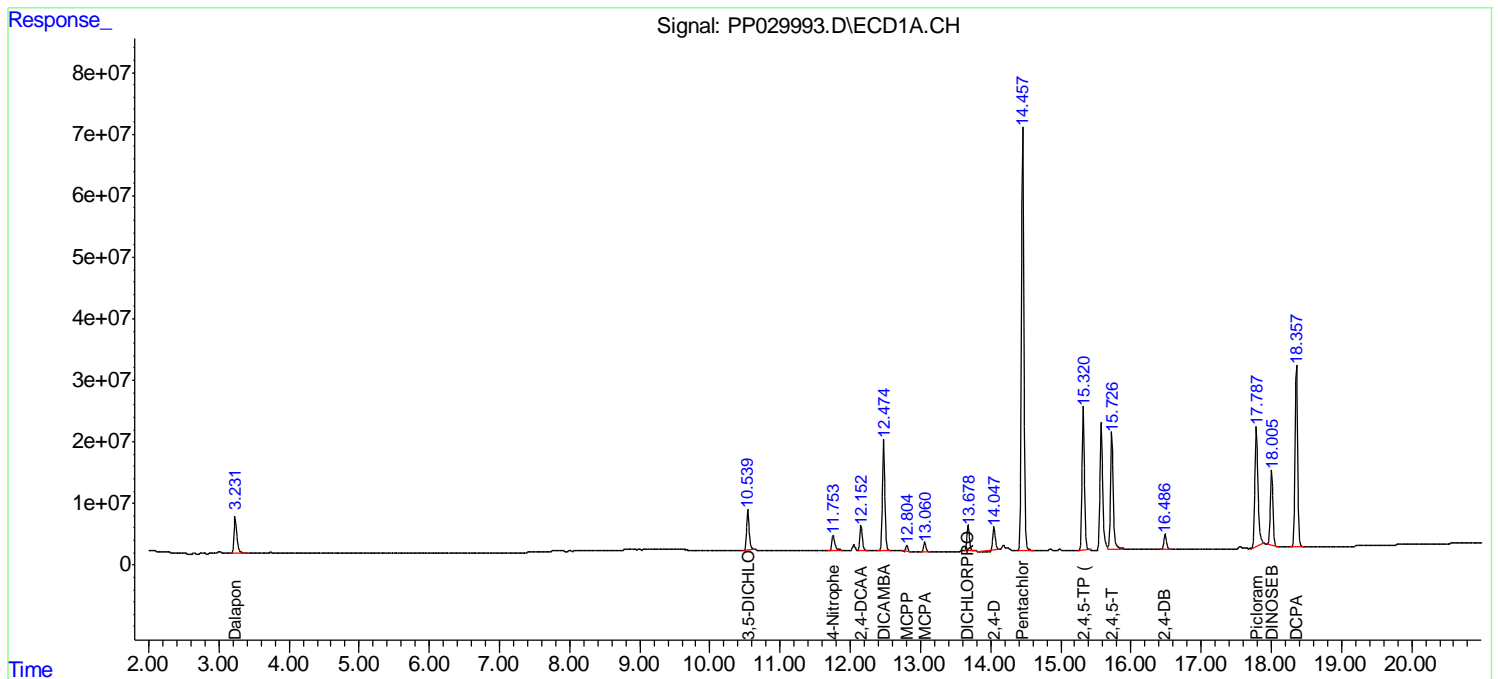
(f)=RT Delta > 1/2 Window (#)=Amounts differ by > 25% (m)=manual int.

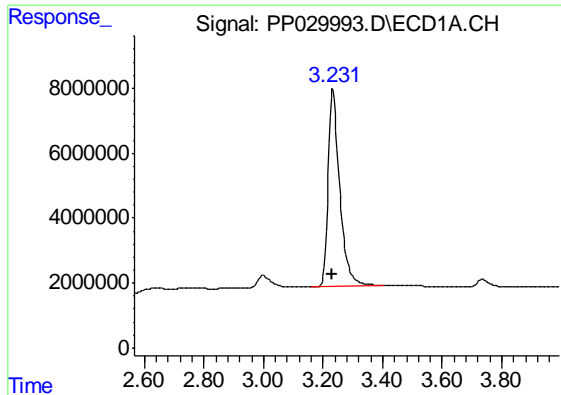
Data Path : Z:\pestpcbsrv\HPCHEM1\ECD_P\Data\PP042519\
 Data File : PP029993.D
 Signal(s) : Signal #1: ECD1A.CH Signal #2: ECD2B.CH
 Acq On : 25 Apr 2019 13:04
 Operator : EI/SJ
 Sample : HSTDICC200
 Misc :
 ALS Vial : 3 Sample Multiplier: 1

Instrument :
 ECD_P
 ClientSampled :
 HSTDICC200

Integration File signal 1: autoint1.e
 Integration File signal 2: autoint2.e
 Quant Time: Apr 26 10:01:02 2019
 Quant Method : Z:\pestpcbsrv\HPCHEM1\ECD_P\methods\PP042519.M
 Quant Title : 8080.M
 QLast Update : Fri Apr 26 09:59:52 2019
 Response via : Initial Calibration
 Integrator: ChemStation 6890 Scale Mode: Large solvent peaks clipped

Volume Inj. : 2 µl
 Signal #1 Phase : ZB-CLPesticides-1 Signal #2 Phase: ZB-CLPesticides-2
 Signal #1 Info : 30M x 0.32mm x0.5 Signal #2 Info : 30M x 0.32mm x 0.25µm

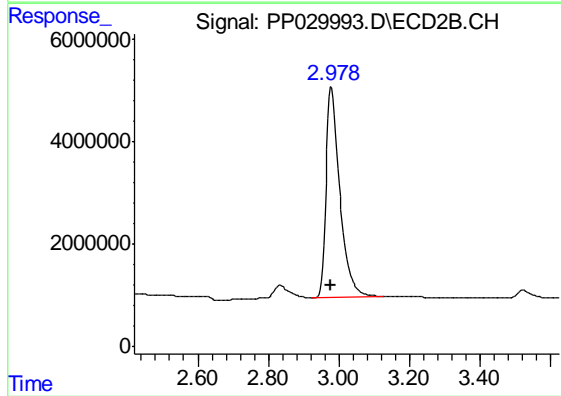




#1 Dalapon

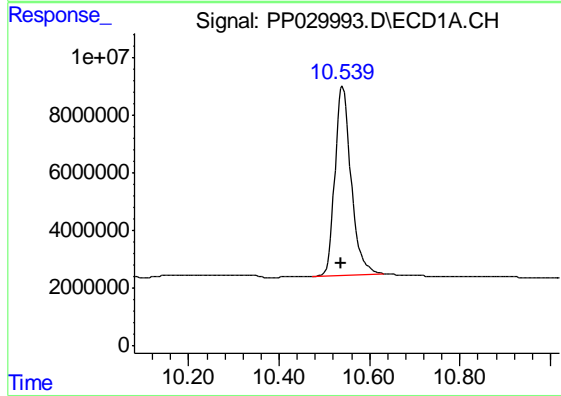
R.T.: 3.233 min
 Delta R.T.: 0.002 min
 Response: 165199006
 Conc: 217.82 ng/ml

Instrument :
 ECD_P
 ClientSampleId :
 HSTDICC200



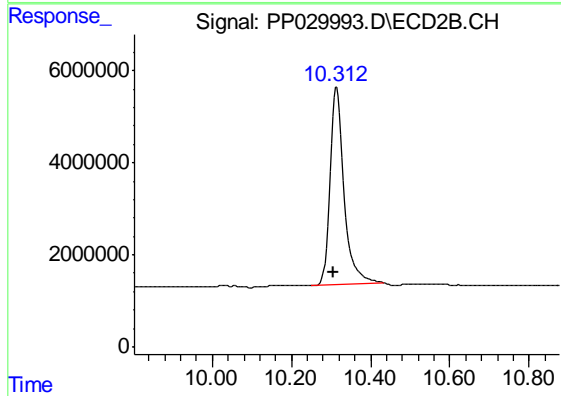
#1 Dalapon

R.T.: 2.980 min
 Delta R.T.: 0.001 min
 Response: 110750443
 Conc: 212.95 ng/ml



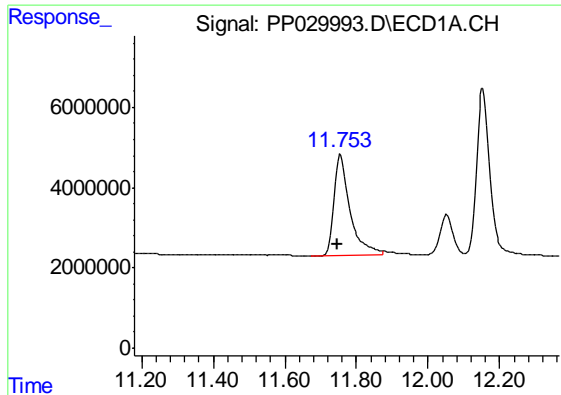
#2 3,5-DICHLOROBENZOIC ACID

R.T.: 10.541 min
 Delta R.T.: 0.003 min
 Response: 162213118
 Conc: 226.62 ng/ml



#2 3,5-DICHLOROBENZOIC ACID

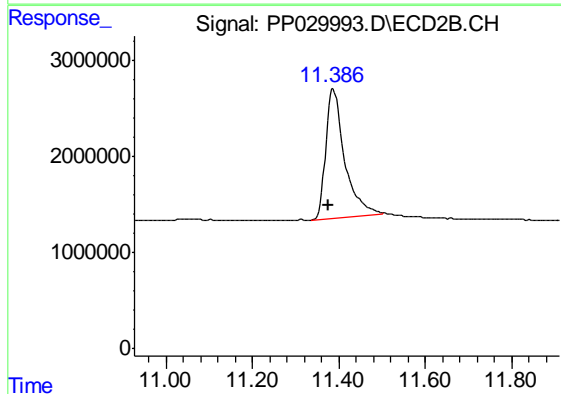
R.T.: 10.313 min
 Delta R.T.: 0.006 min
 Response: 106607628
 Conc: 216.22 ng/ml



#3 4-Nitrophenol

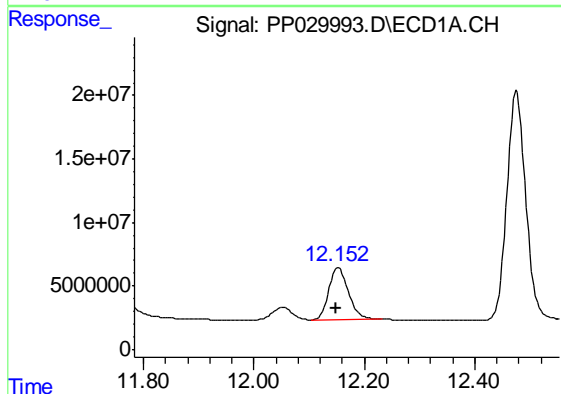
R.T.: 11.755 min
Delta R.T.: 0.008 min
Response: 79355500
Conc: 215.61 ng/ml

Instrument :
ECD_P
ClientSampleId :
HSTDICC200



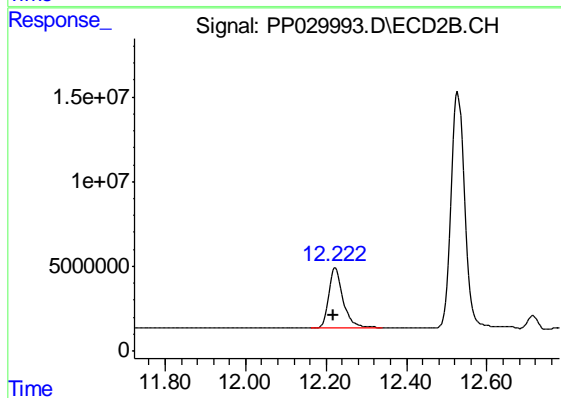
#3 4-Nitrophenol

R.T.: 11.387 min
Delta R.T.: 0.011 min
Response: 40727675
Conc: 197.99 ng/ml



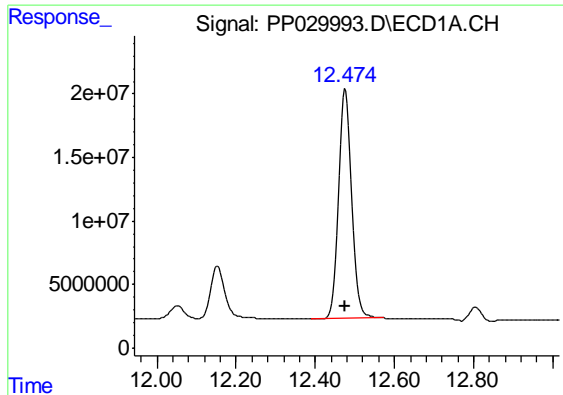
#4 2,4-DCAA

R.T.: 12.153 min
Delta R.T.: 0.004 min
Response: 101512252
Conc: 243.34 ng/ml



#4 2,4-DCAA

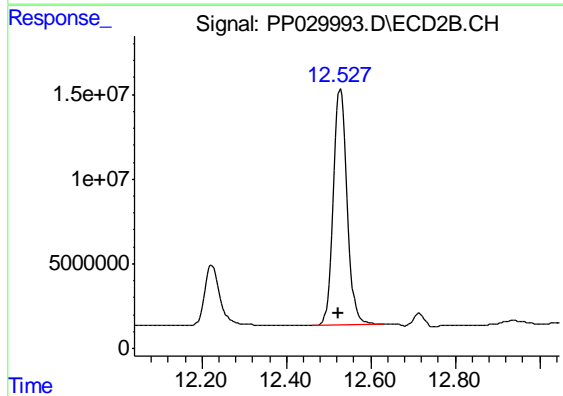
R.T.: 12.223 min
Delta R.T.: 0.005 min
Response: 88508225
Conc: 235.26 ng/ml



#5 DICAMBA

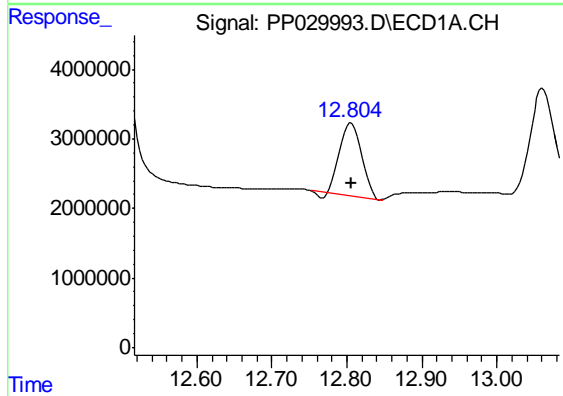
R.T.: 12.476 min
 Delta R.T.: 0.002 min
 Response: 425970166
 Conc: 221.15 ng/ml

Instrument :
 ECD_P
 ClientSampleId :
 HSTDICC200



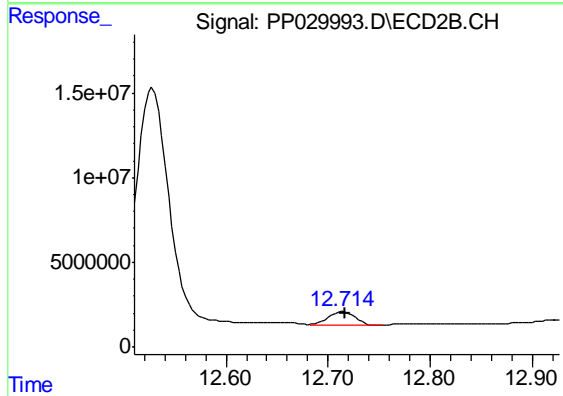
#5 DICAMBA

R.T.: 12.528 min
 Delta R.T.: 0.003 min
 Response: 315215527
 Conc: 213.77 ng/ml



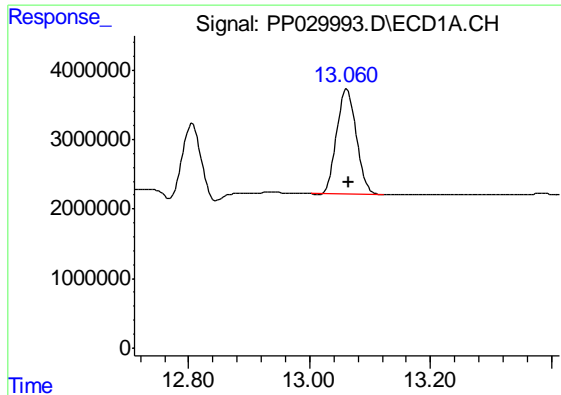
#6 MCPP

R.T.: 12.806 min
 Delta R.T.: 0.000 min
 Response: 20322065
 Conc: 19.00 ug/ml



#6 MCPP

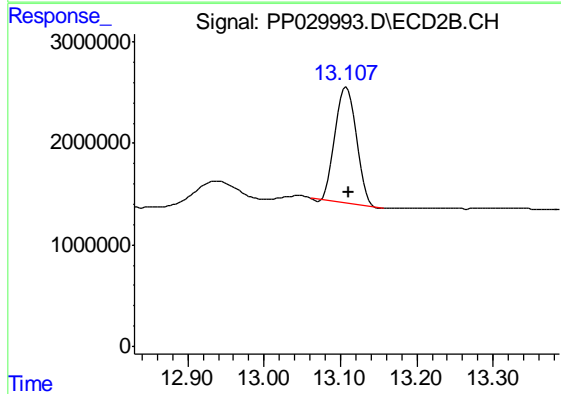
R.T.: 12.715 min
 Delta R.T.: -0.002 min
 Response: 13911334
 Conc: 18.32 ug/ml



#7 MCPA

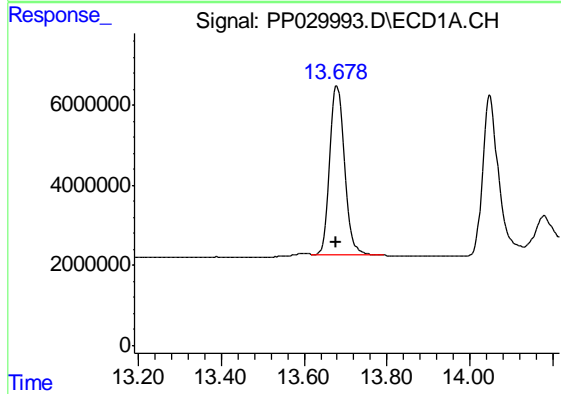
R.T.: 13.062 min
 Delta R.T.: -0.002 min
 Response: 34165524
 Conc: 21.74 ug/ml

Instrument :
 ECD_P
 ClientSampleId :
 HSTDICC200



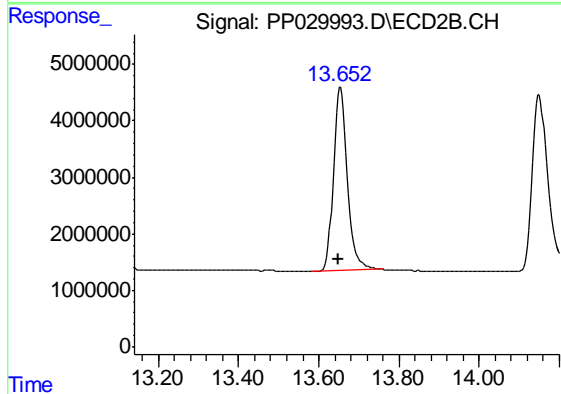
#7 MCPA

R.T.: 13.108 min
 Delta R.T.: -0.003 min
 Response: 21995319
 Conc: 18.34 ug/ml



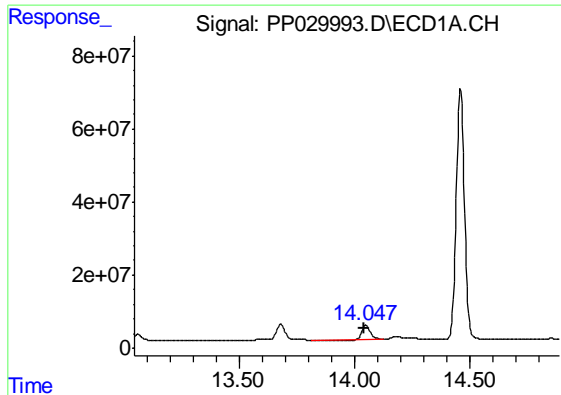
#8 DICHLORPROP

R.T.: 13.680 min
 Delta R.T.: 0.003 min
 Response: 104329198
 Conc: 235.26 ng/ml



#8 DICHLORPROP

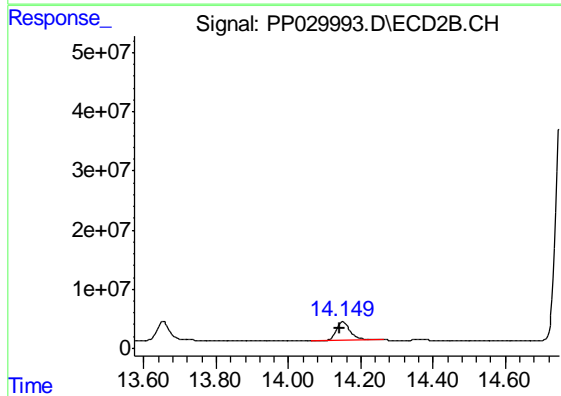
R.T.: 13.653 min
 Delta R.T.: 0.005 min
 Response: 78715003
 Conc: 223.20 ng/ml



#9 2,4-D

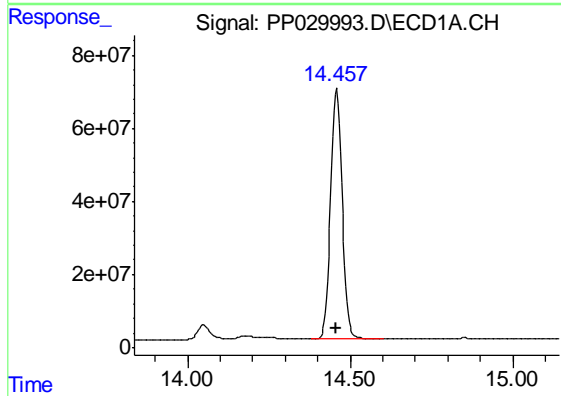
R.T.: 14.049 min
 Delta R.T.: 0.006 min
 Response: 84768304
 Conc: 179.71 ng/ml

Instrument :
 ECD_P
 ClientSampleId :
 HSTDICC200



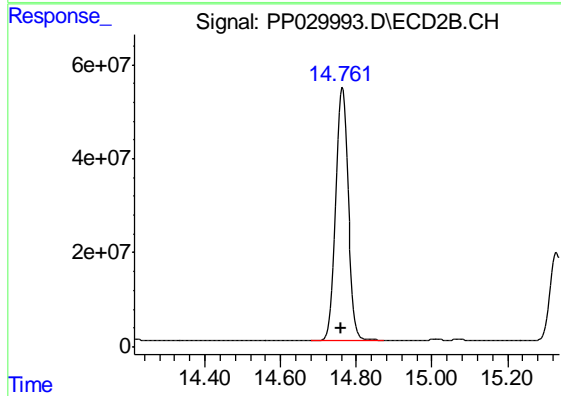
#9 2,4-D

R.T.: 14.150 min
 Delta R.T.: 0.008 min
 Response: 83068789
 Conc: 209.32 ng/ml



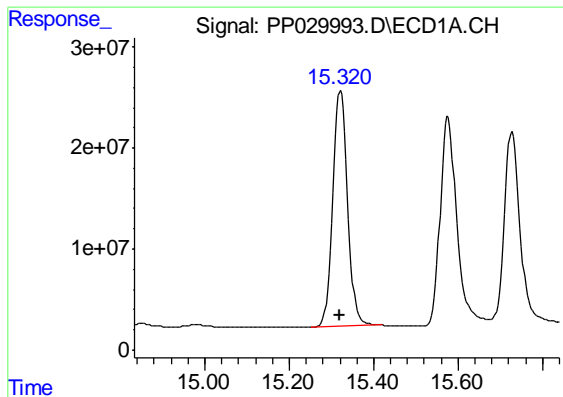
#10 Pentachlorophenol

R.T.: 14.459 min
 Delta R.T.: 0.001 min
 Response: 1709109472
 Conc: 225.88 ng/ml



#10 Pentachlorophenol

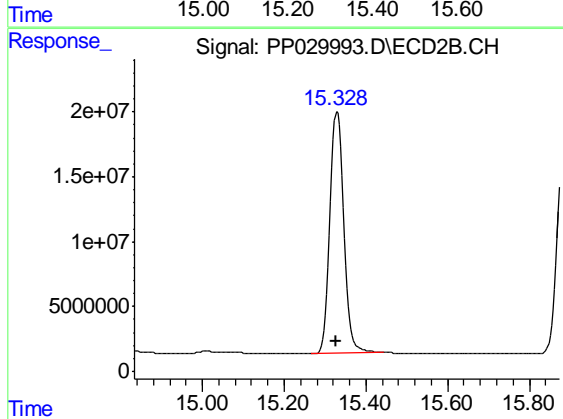
R.T.: 14.762 min
 Delta R.T.: 0.003 min
 Response: 1267237997
 Conc: 225.33 ng/ml



#11 2,4,5-TP (SILVEX)

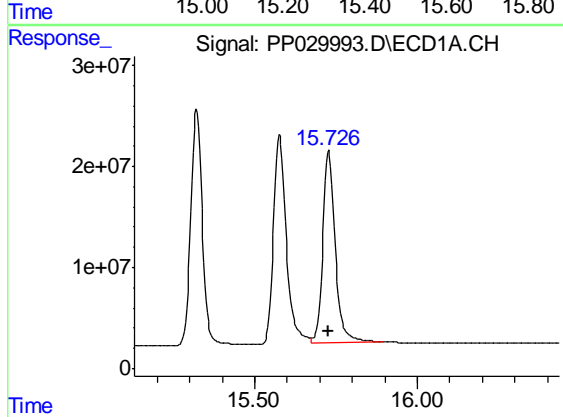
R.T.: 15.322 min
Delta R.T.: 0.002 min
Response: 565682586
Conc: 222.87 ng/ml

Instrument :
ECD_P
ClientSampleId :
HSTDICC200



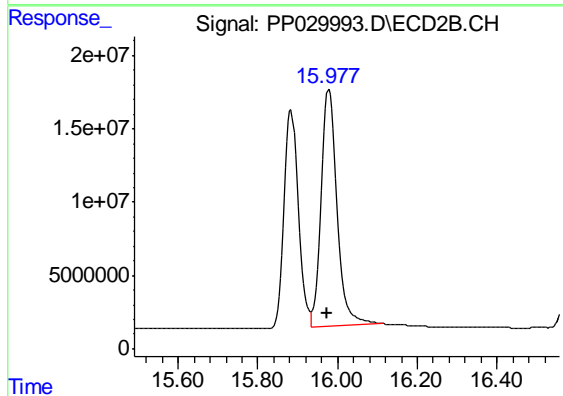
#11 2,4,5-TP (SILVEX)

R.T.: 15.329 min
Delta R.T.: 0.004 min
Response: 436979797
Conc: 217.25 ng/ml



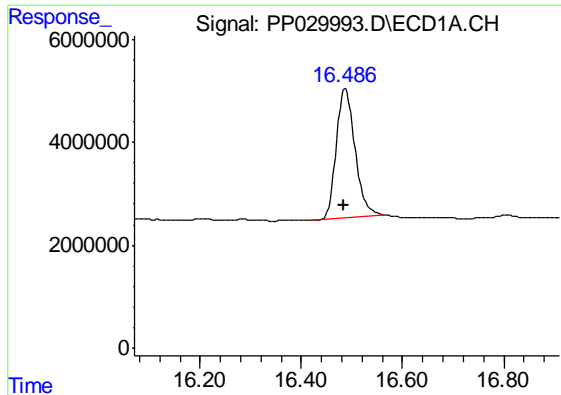
#12 2,4,5-T

R.T.: 15.728 min
Delta R.T.: 0.003 min
Response: 506340413
Conc: 216.53 ng/ml



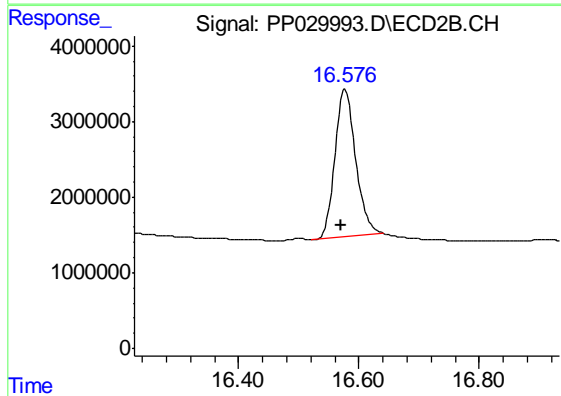
#12 2,4,5-T

R.T.: 15.978 min
Delta R.T.: 0.005 min
Response: 432825070
Conc: 218.99 ng/ml

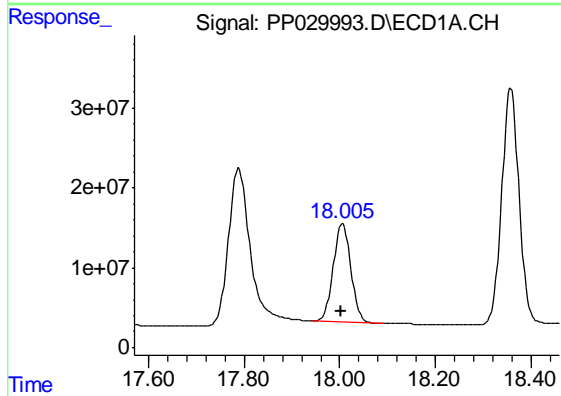


#13 2,4-DB
 R.T.: 16.487 min
 Delta R.T.: 0.004 min
 Response: 63752968
 Conc: 221.13 ng/ml

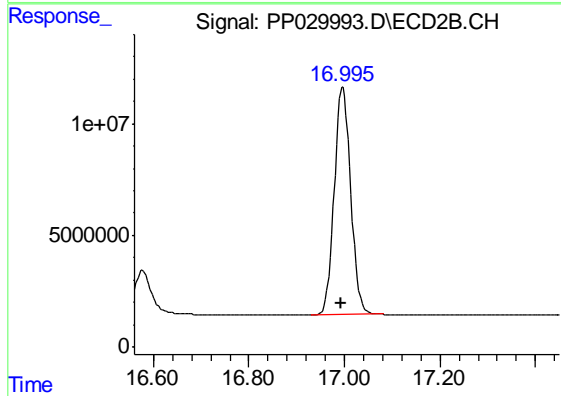
Instrument :
 ECD_P
 ClientSampleId :
 HSTDICC200



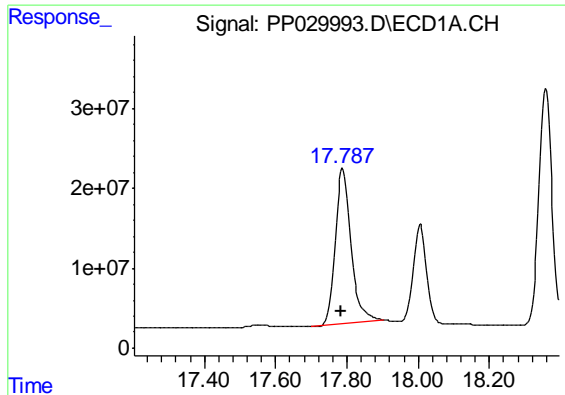
#13 2,4-DB
 R.T.: 16.577 min
 Delta R.T.: 0.006 min
 Response: 46693624
 Conc: 209.37 ng/ml



#14 DINOSEB
 R.T.: 18.006 min
 Delta R.T.: 0.003 min
 Response: 313492298
 Conc: 205.39 ng/ml



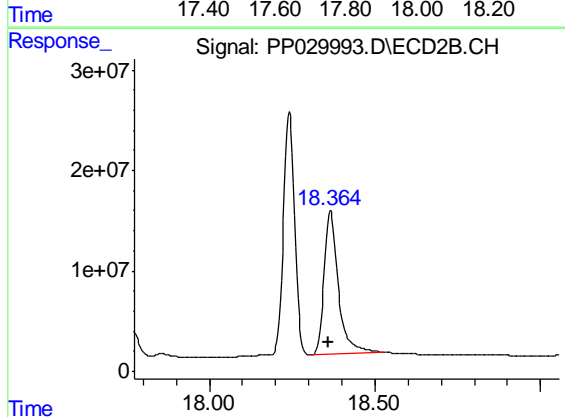
#14 DINOSEB
 R.T.: 16.997 min
 Delta R.T.: 0.003 min
 Response: 242367059
 Conc: 200.03 ng/ml



#15 Picloram

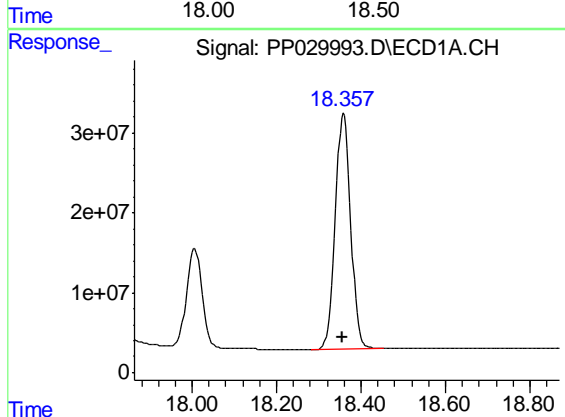
R.T.: 17.789 min
Delta R.T.: 0.006 min
Response: 594707642
Conc: 175.04 ng/ml

Instrument :
ECD_P
ClientSampleId :
HSTDICC200



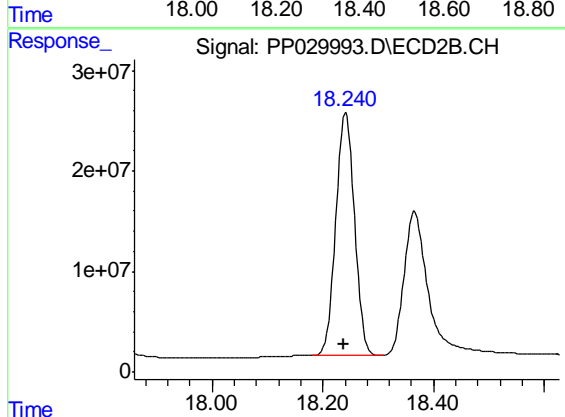
#15 Picloram

R.T.: 18.366 min
Delta R.T.: 0.006 min
Response: 425970339
Conc: 163.85 ng/ml



#16 DCPA

R.T.: 18.359 min
Delta R.T.: 0.002 min
Response: 748746233
Conc: 221.50 ng/ml



#16 DCPA

R.T.: 18.242 min
Delta R.T.: 0.003 min
Response: 566449755
Conc: 219.64 ng/ml