

Data Path : Z:\pestpcbsrv\HPCHEM1\ECD_P\Data\PP042621\
 Data File : PP035301.D
 Signal(s) : Signal #1: ECD1A.CH Signal #2: ECD2B.CH
 Acq On : 27 Apr 2021 1:08
 Operator : DD\AJ
 Sample : AR1268ICC500
 Misc :
 ALS Vial : 32 Sample Multiplier: 1

Instrument :
 ECD_P
 ClientSampleId :
 AR1268ICC500

Integration File signal 1: autoint1.e
 Integration File signal 2: autoint2.e
 Quant Time: Apr 27 07:23:15 2021
 Quant Method : Z:\pestpcbsrv\HPCHEM1\ECD_P\methods\PP042621.M
 Quant Title : GC EXTRACTABLES
 QLast Update : Tue Apr 27 07:22:10 2021
 Response via : Initial Calibration
 Integrator: ChemStation 6890 Scale Mode: Small noise peaks clipped

Volume Inj. : 2 µl
 Signal #1 Phase : ZB-MR2 Signal #2 Phase: ZB-MR2
 Signal #1 Info : 30Mx0.32mmx 0.50µ Signal #2 Info : 30M x 0.32mm x 0.25µm

Compound	RT#1	RT#2	Resp#1	Resp#2	ng/ml	ng/ml

System Monitoring Compounds						
1) SA Tetrachlo...	4.838	4.240	3923860	2496889	50.000	50.000
2) SA Decachlor...	10.737	9.519	5949663	2201062	50.000	50.000
Target Compounds						
41) L9 AR-1268-1	9.298	8.416	4747775	2076735	500.000	500.000
42) L9 AR-1268-2	9.391	8.482	4764528	2022047	500.000	500.000
43) L9 AR-1268-3	9.605	8.684	4158833	1757092	500.000	500.000
44) L9 AR-1268-4	10.028	8.976	1429559	583636	500.000	500.000
45) L9 AR-1268-5	10.421	9.268	12531042	4820433	500.000	500.000

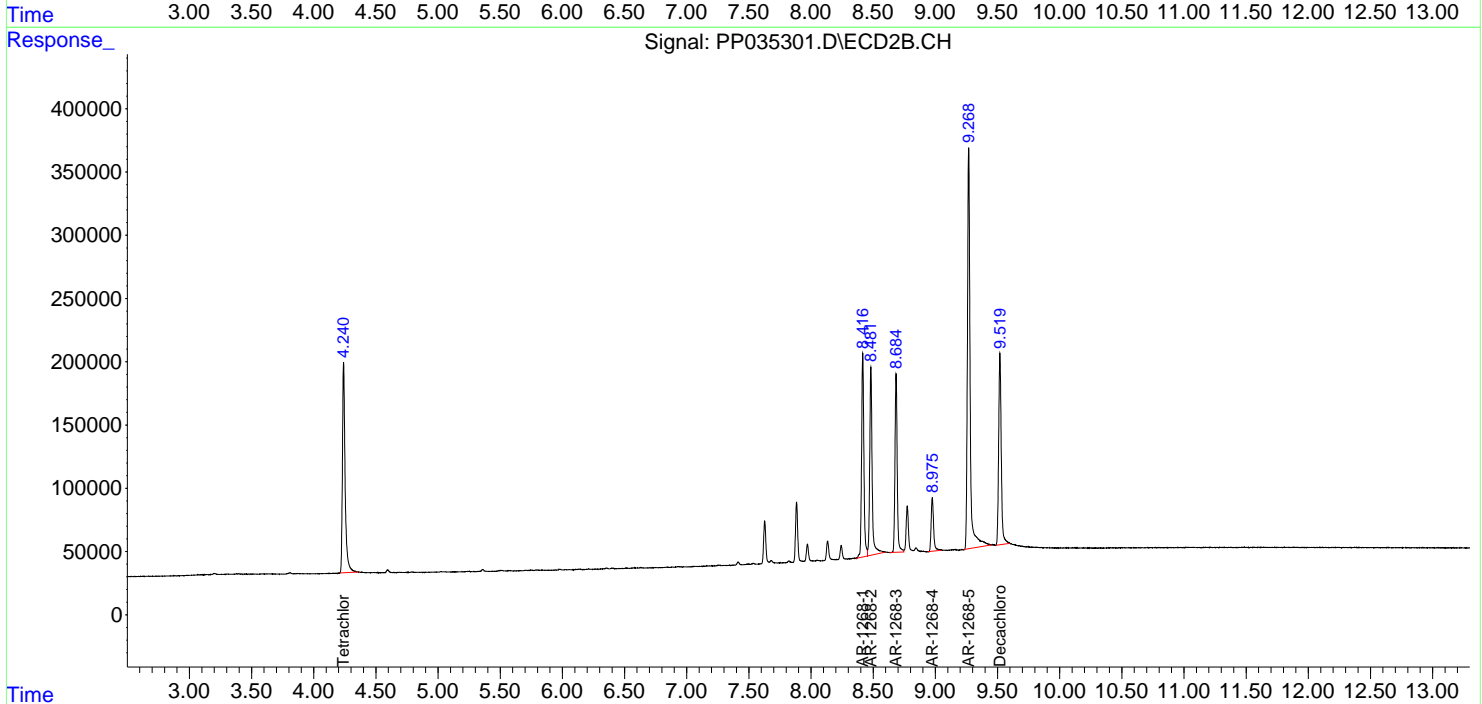
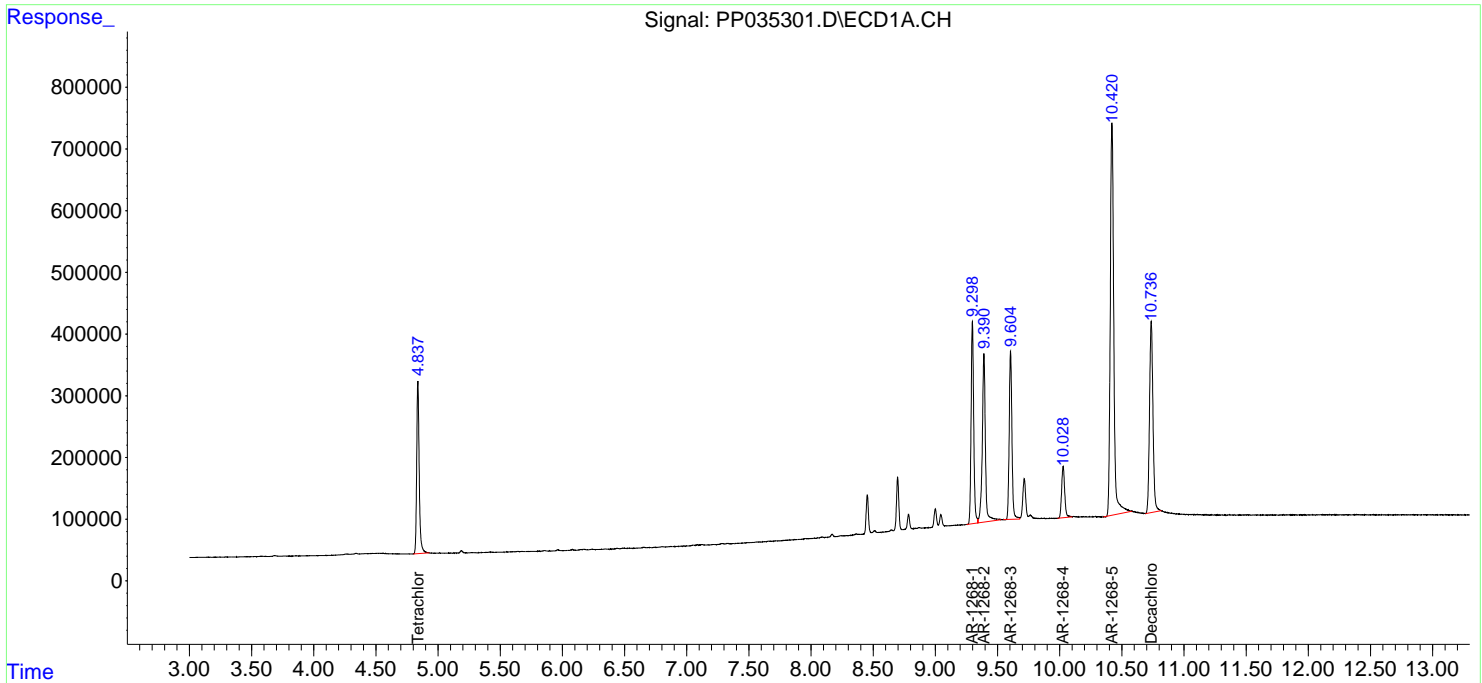
(f)=RT Delta > 1/2 Window (#)=Amounts differ by > 25% (m)=manual int.

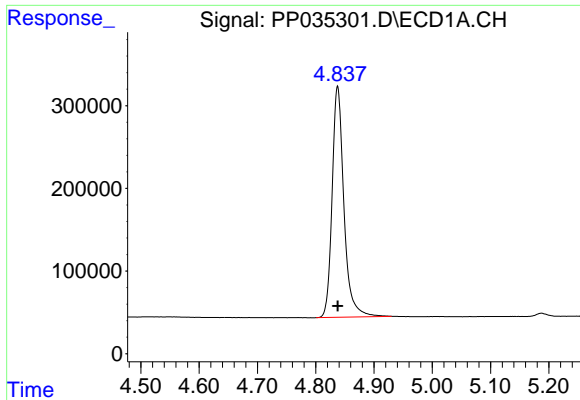
Data Path : Z:\pestpcbsrv\HPCHEM1\ECD_P\Data\PP042621\
 Data File : PP035301.D
 Signal(s) : Signal #1: ECD1A.CH Signal #2: ECD2B.CH
 Acq On : 27 Apr 2021 1:08
 Operator : DD\AJ
 Sample : AR1268ICC500
 Misc :
 ALS Vial : 32 Sample Multiplier: 1

Instrument :
 ECD_P
 ClientSampled :
 AR1268ICC500

Integration File signal 1: autoint1.e
 Integration File signal 2: autoint2.e
 Quant Time: Apr 27 07:23:15 2021
 Quant Method : Z:\pestpcbsrv\HPCHEM1\ECD_P\methods\PP042621.M
 Quant Title : GC EXTRACTABLES
 QLast Update : Tue Apr 27 07:22:10 2021
 Response via : Initial Calibration
 Integrator: ChemStation 6890 Scale Mode: Small noise peaks clipped

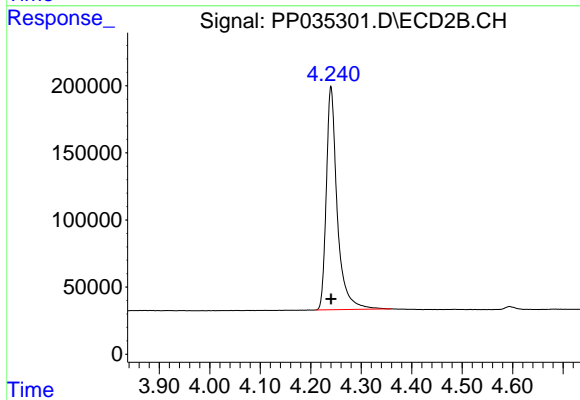
Volume Inj. : 2 µl
 Signal #1 Phase : ZB-MR1 Signal #2 Phase: ZB-MR2
 Signal #1 Info : 30Mx0.32mmx 0.50µ Signal #2 Info : 30M x 0.32mm x 0.25µm



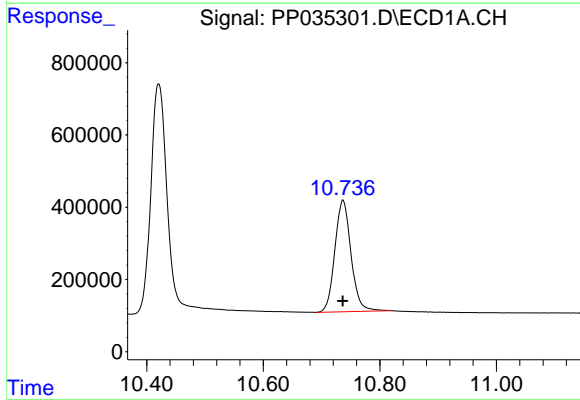


#1 Tetrachloro-m-xylene
 R.T.: 4.838 min
 Delta R.T.: 0.000 min
 Response: 3923860
 Conc: 50.00 ng/ml

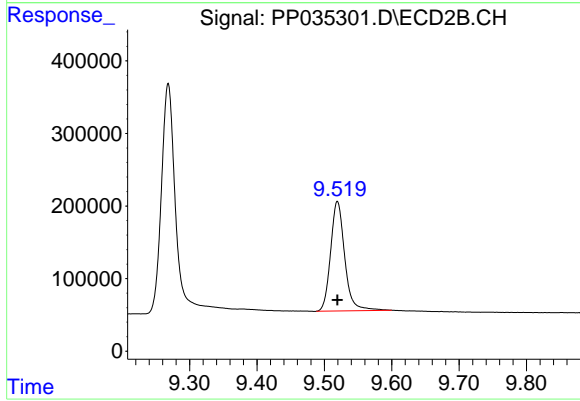
Instrument :
 ECD_P
 ClientSampleId :
 AR1268ICC500



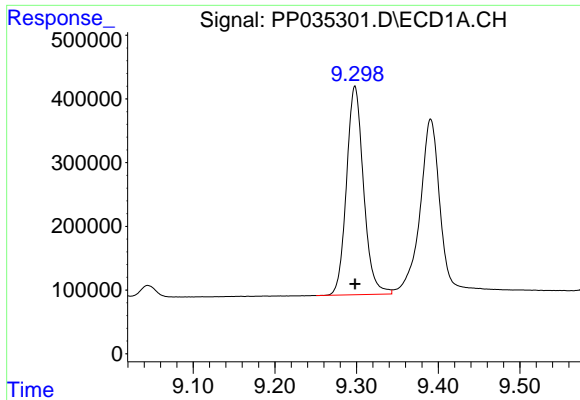
#1 Tetrachloro-m-xylene
 R.T.: 4.240 min
 Delta R.T.: 0.000 min
 Response: 2496889
 Conc: 50.00 ng/ml



#2 Decachlorobiphenyl
 R.T.: 10.737 min
 Delta R.T.: 0.000 min
 Response: 5949663
 Conc: 50.00 ng/ml

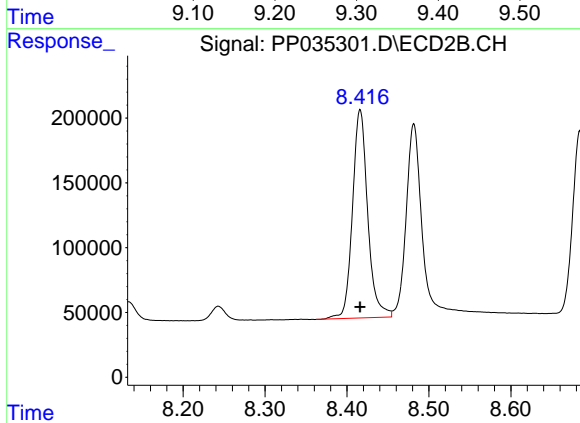


#2 Decachlorobiphenyl
 R.T.: 9.519 min
 Delta R.T.: 0.000 min
 Response: 2201062
 Conc: 50.00 ng/ml

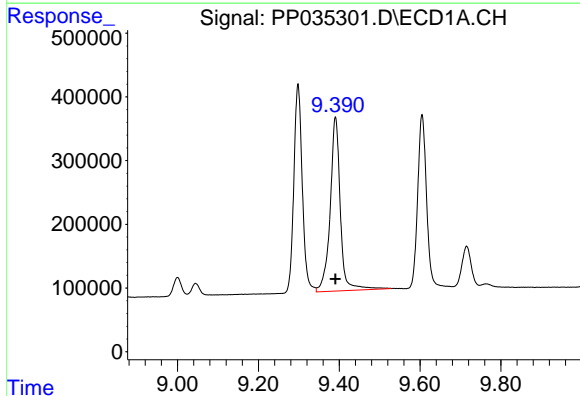


#41 AR-1268-1
 R.T.: 9.298 min
 Delta R.T.: 0.000 min
 Response: 4747775
 Conc: 500.00 ng/ml

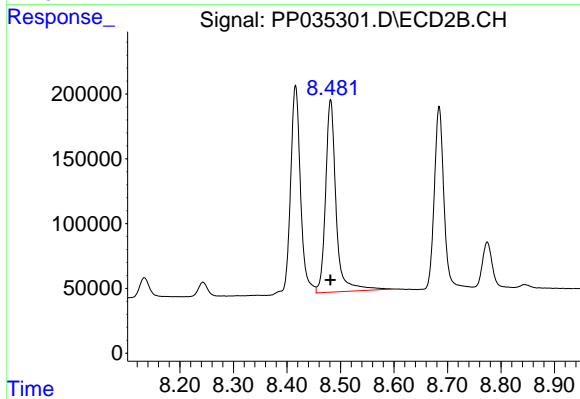
Instrument :
 ECD_P
 ClientSampleId :
 AR1268ICC500



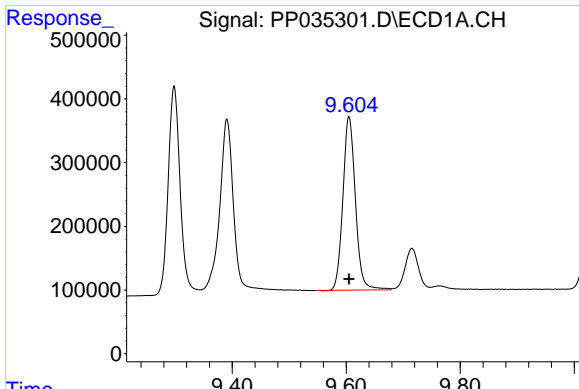
#41 AR-1268-1
 R.T.: 8.416 min
 Delta R.T.: 0.000 min
 Response: 2076735
 Conc: 500.00 ng/ml



#42 AR-1268-2
 R.T.: 9.391 min
 Delta R.T.: 0.000 min
 Response: 4764528
 Conc: 500.00 ng/ml



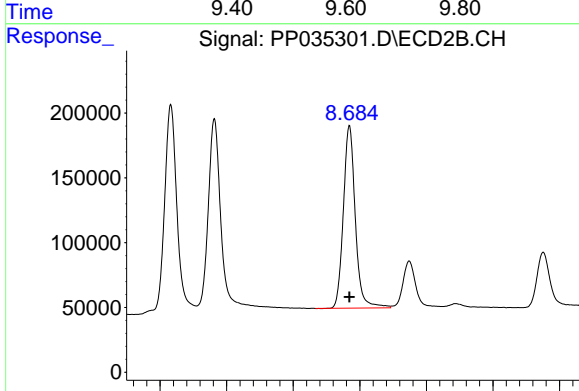
#42 AR-1268-2
 R.T.: 8.482 min
 Delta R.T.: 0.000 min
 Response: 2022047
 Conc: 500.00 ng/ml



#43 AR-1268-3

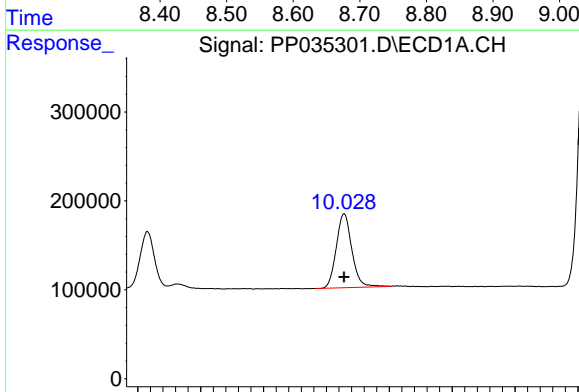
R.T.: 9.605 min
 Delta R.T.: 0.000 min
 Response: 4158833
 Conc: 500.00 ng/ml

Instrument :
 ECD_P
 ClientSampleId :
 AR1268ICC500



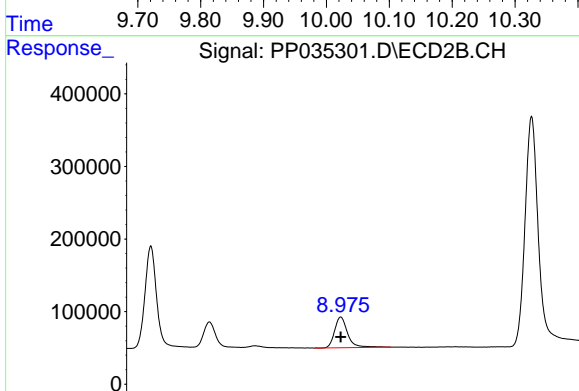
#43 AR-1268-3

R.T.: 8.684 min
 Delta R.T.: 0.000 min
 Response: 1757092
 Conc: 500.00 ng/ml



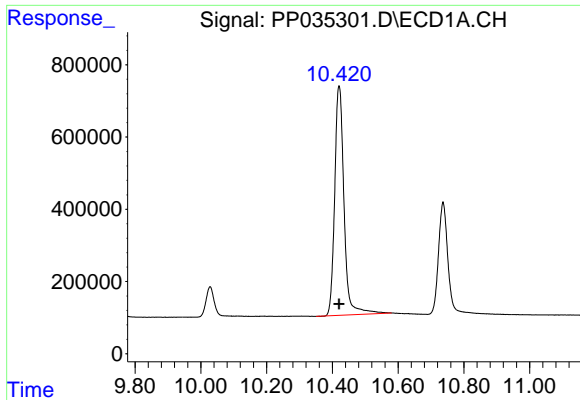
#44 AR-1268-4

R.T.: 10.028 min
 Delta R.T.: 0.000 min
 Response: 1429559
 Conc: 500.00 ng/ml



#44 AR-1268-4

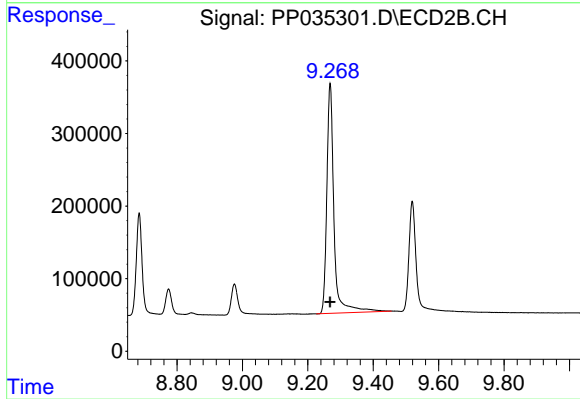
R.T.: 8.976 min
 Delta R.T.: 0.000 min
 Response: 583636
 Conc: 500.00 ng/ml



#45 AR-1268-5

R.T.: 10.421 min
Delta R.T.: 0.000 min
Response: 12531042
Conc: 500.00 ng/ml

Instrument :
ECD_P
ClientSampled :
AR1268ICC500



#45 AR-1268-5

R.T.: 9.268 min
Delta R.T.: 0.000 min
Response: 4820433
Conc: 500.00 ng/ml