

Data Path : Z:\pestpcbsrv\HPCHEM1\ECD\_P\Data\PP042622\  
 Data File : PP046678.D  
 Signal(s) : Signal #1: ECD1A.ch Signal #2: ECD2B.ch  
 Acq On : 27 Apr 2022 00:07  
 Operator : YP\AJ  
 Sample : AR1248CCC500  
 Misc :  
 ALS Vial : 5 Sample Multiplier: 1

**Instrument :**  
 ECD\_P  
**ClientSampleId :**  
 AR1248CCC500

**Manual Integrations**  
**APPROVED**  
 Reviewed By :Yogesh Patel 04/27/2022  
 Supervised By :mohammad ahmed 04/27/2022

Integration File signal 1: autoint1.e  
 Integration File signal 2: autoint2.e  
 Quant Time: Apr 27 01:51:08 2022  
 Quant Method : Z:\pestpcbsrv\HPCHEM1\ECD\_P\methods\PP042222.M  
 Quant Title : GC EXTRACTABLES  
 QLast Update : Fri Apr 22 19:00:06 2022  
 Response via : Initial Calibration  
 Integrator: ChemStation

Volume Inj. : 2 µl  
 Signal #1 Phase : ZB-MR1 Signal #2 Phase: ZB-MR2  
 Signal #1 Info : 30Mx0.32mmx 0.50µ Signal #2 Info : 30M x 0.32mm x 0.25µm

Compound	RT#1	RT#2	Resp#1	Resp#2	ng/ml	ng/ml
-----						
System Monitoring Compounds						
1) SA Tetrachlo...	3.861	3.141	131.0E6	187.2E6	54.258	57.075
2) SA Decachlor...	9.942	8.460	77495186	137.4E6	52.664	57.595
Target Compounds						
21) L5 AR-1248-1	5.107	4.273	23077786	38351953	552.165	558.123
22) L5 AR-1248-2	5.401	4.523	31235288	52498440	528.483	561.527
23) L5 AR-1248-3	5.619	4.565	37027063	54568640	530.084	558.977
24) L5 AR-1248-4	6.057	4.746	38383186	64426556	500.554m	547.297
25) L5 AR-1248-5	6.097	5.163	35687263	66482322	458.831m	545.560
-----						

(f)=RT Delta > 1/2 Window (#)=Amounts differ by > 25% (m)=manual int.

Data Path : Z:\pestpcbsrv\HPCHEM1\ECD\_P\Data\PP042622\  
 Data File : PP046678.D  
 Signal(s) : Signal #1: ECD1A.ch Signal #2: ECD2B.ch  
 Acq On : 27 Apr 2022 00:07  
 Operator : YP\AJ  
 Sample : AR1248CCC500  
 Misc :  
 ALS Vial : 5 Sample Multiplier: 1

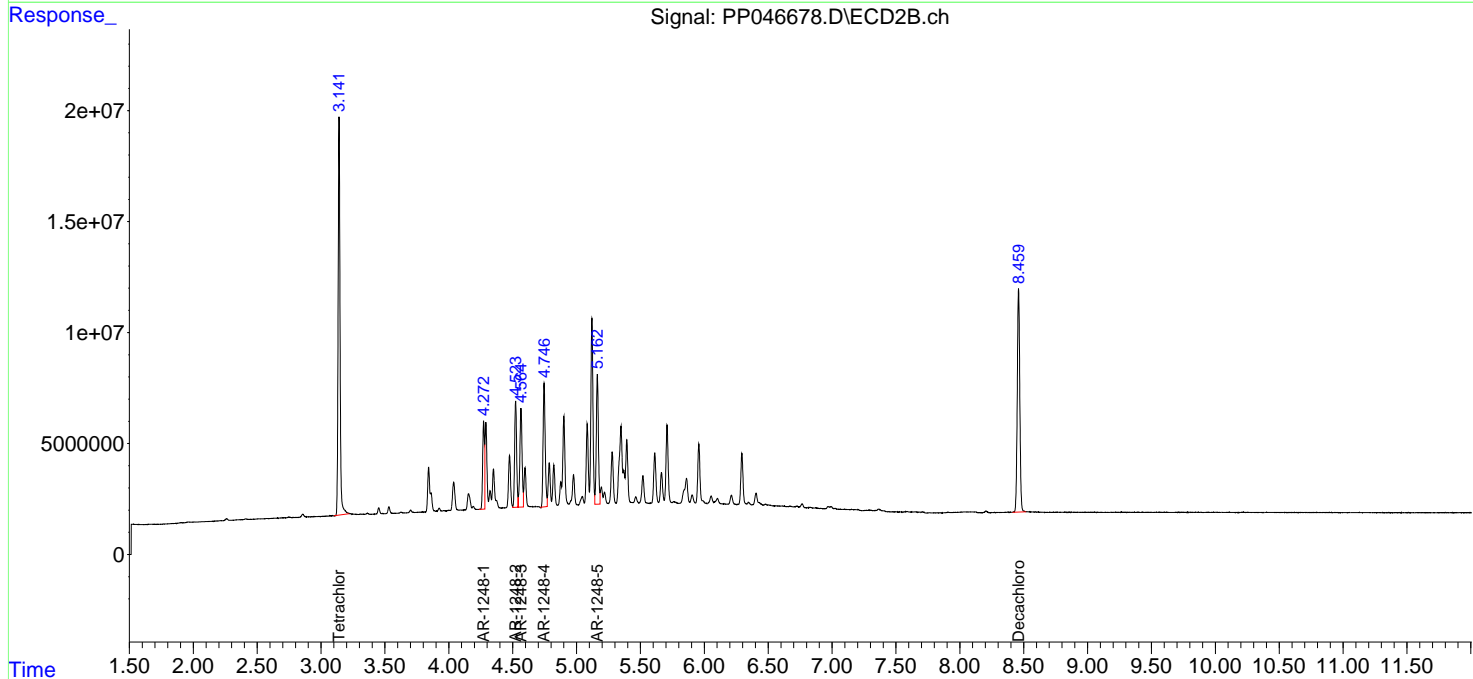
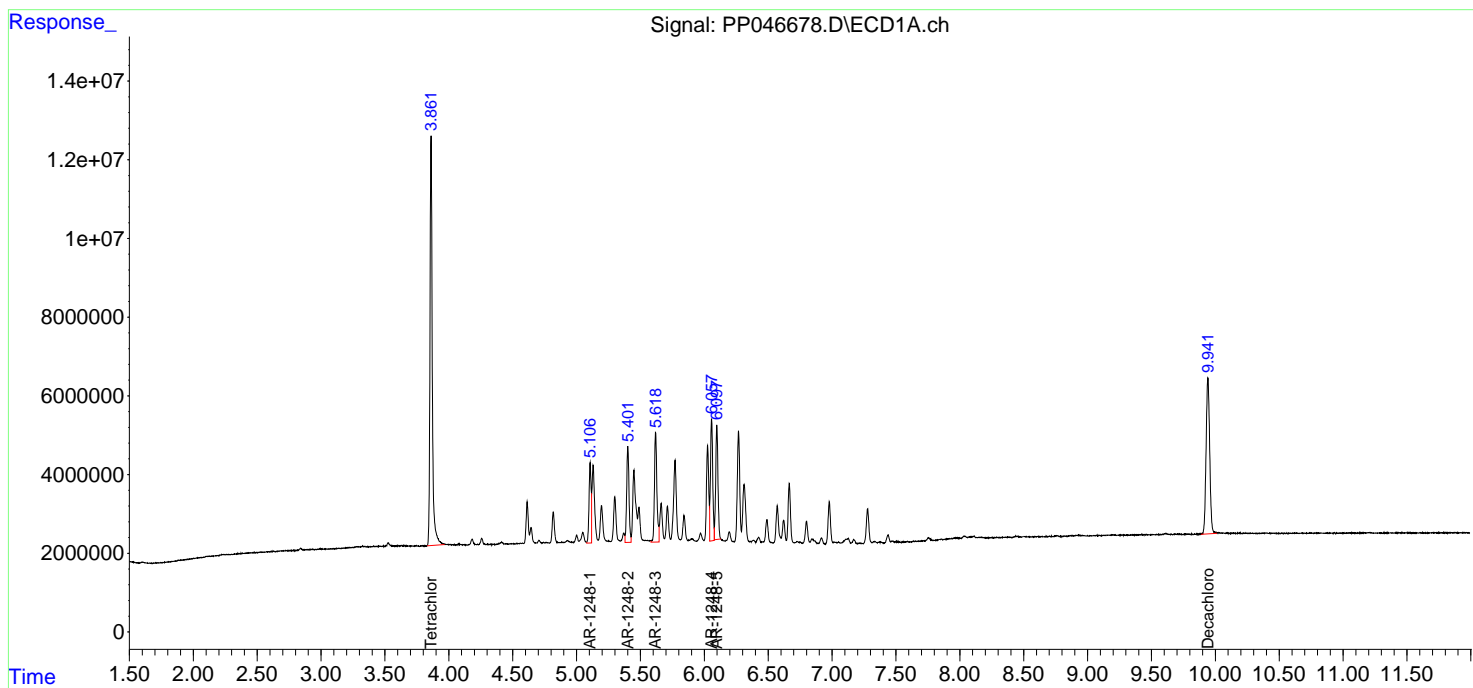
Instrument :  
 ECD\_P  
 ClientSampleId :  
 AR1248CCC500

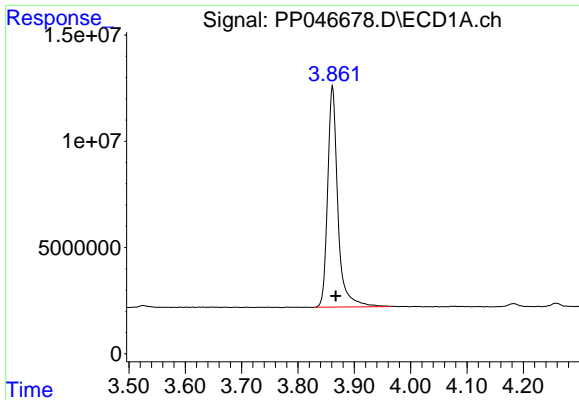
Manual Integrations  
 APPROVED

Reviewed By :Yogesh Patel 04/27/2022  
 Supervised By :mohammad ahmed 04/27/2022

Integration File signal 1: autoint1.e  
 Integration File signal 2: autoint2.e  
 Quant Time: Apr 27 01:51:08 2022  
 Quant Method : Z:\pestpcbsrv\HPCHEM1\ECD\_P\methods\PP042222.M  
 Quant Title : GC EXTRACTABLES  
 QLast Update : Fri Apr 22 19:00:06 2022  
 Response via : Initial Calibration  
 Integrator: ChemStation

Volume Inj. : 2 µl  
 Signal #1 Phase : ZB-MR1 Signal #2 Phase: ZB-MR2  
 Signal #1 Info : 30Mx0.32mmx 0.50µ Signal #2 Info : 30M x 0.32mm x 0.25µm



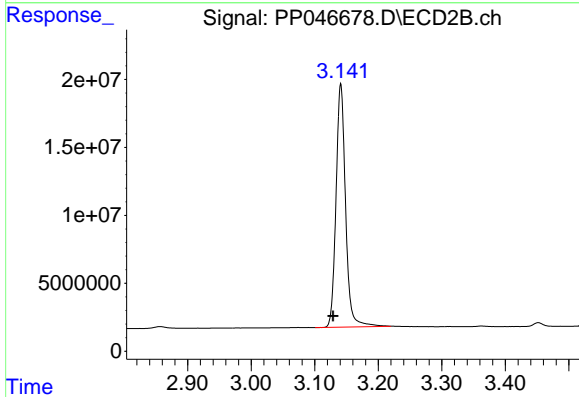


#1 Tetrachloro-m-xylene  
 R.T.: 3.861 min  
 Delta R.T.: -0.006 min  
 Response: 130976253  
 Conc: 54.26 ng/ml

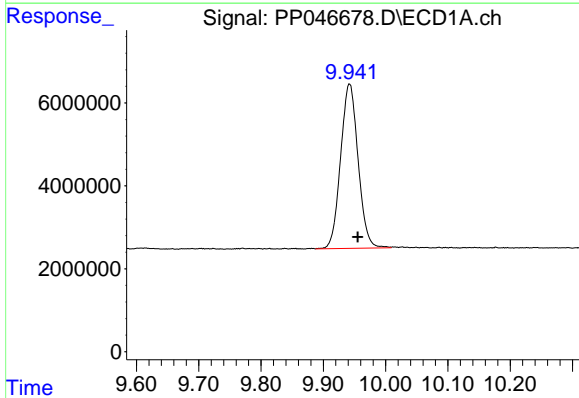
Instrument :  
 ECD\_P  
 Client Sample Id :  
 AR1248CCC500

Manual Integrations  
 APPROVED

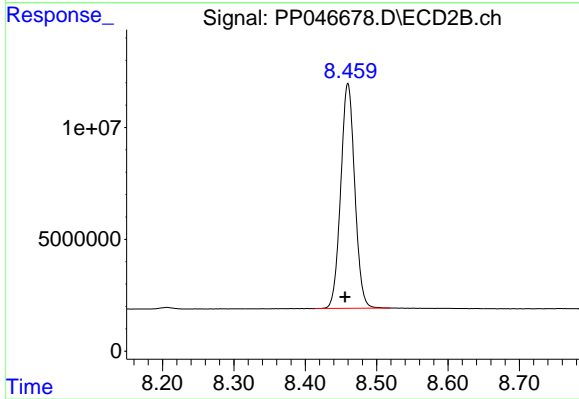
Reviewed By :Yogesh Patel 04/27/2022  
 Supervised By :mohammad ahmed 04/27/2022



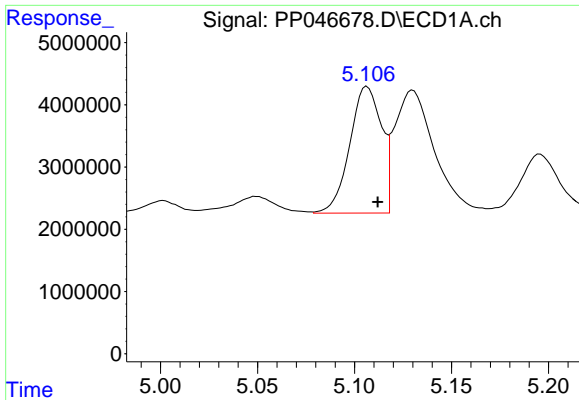
#1 Tetrachloro-m-xylene  
 R.T.: 3.141 min  
 Delta R.T.: 0.012 min  
 Response: 187225968  
 Conc: 57.07 ng/ml



#2 Decachlorobiphenyl  
 R.T.: 9.942 min  
 Delta R.T.: -0.013 min  
 Response: 77495186  
 Conc: 52.66 ng/ml



#2 Decachlorobiphenyl  
 R.T.: 8.460 min  
 Delta R.T.: 0.004 min  
 Response: 137380876  
 Conc: 57.59 ng/ml



#21 AR-1248-1

R.T.: 5.107 min  
 Delta R.T.: -0.005 min  
 Response: 23077786  
 Conc: 552.16 ng/ml

Instrument :

ECD\_P

ClientSampleId :

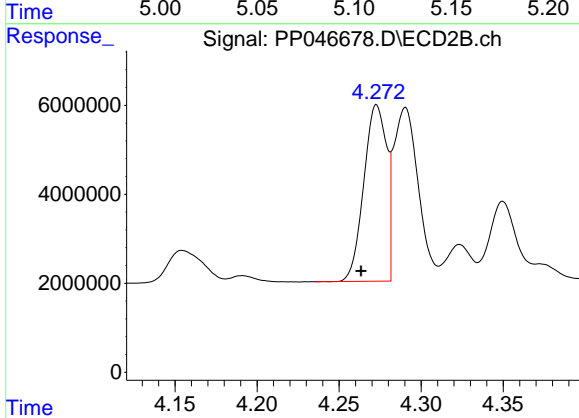
AR1248CCC500

Manual Integrations

APPROVED

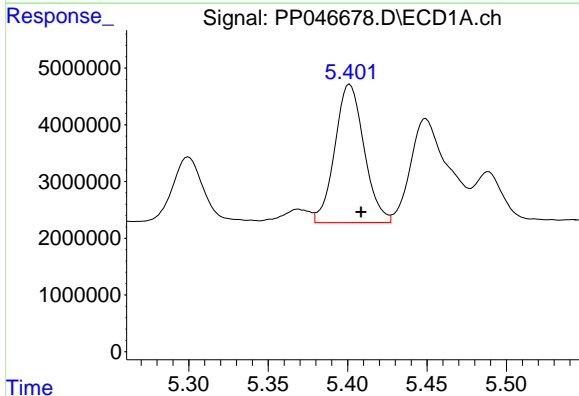
Reviewed By :Yogesh Patel 04/27/2022

Supervised By :mohammad ahmed 04/27/2022



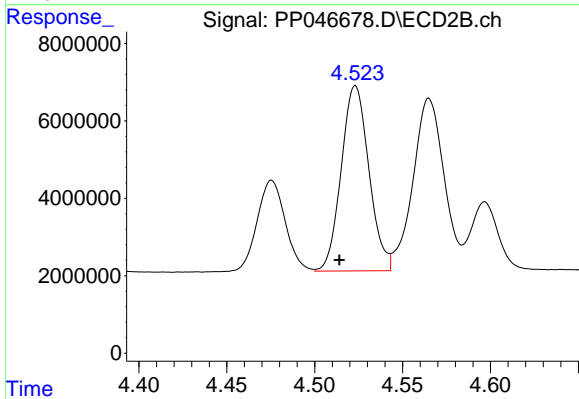
#21 AR-1248-1

R.T.: 4.273 min  
 Delta R.T.: 0.009 min  
 Response: 38351953  
 Conc: 558.12 ng/ml



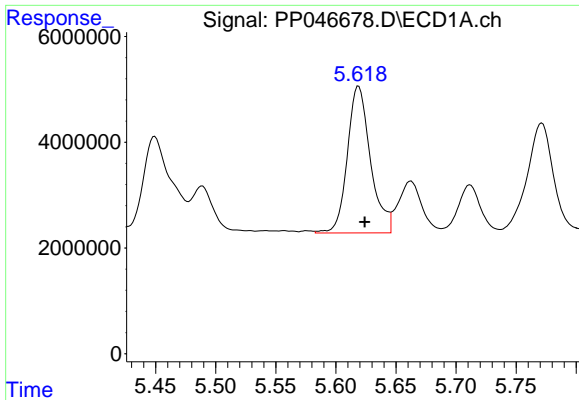
#22 AR-1248-2

R.T.: 5.401 min  
 Delta R.T.: -0.007 min  
 Response: 31235288  
 Conc: 528.48 ng/ml



#22 AR-1248-2

R.T.: 4.523 min  
 Delta R.T.: 0.009 min  
 Response: 52498440  
 Conc: 561.53 ng/ml

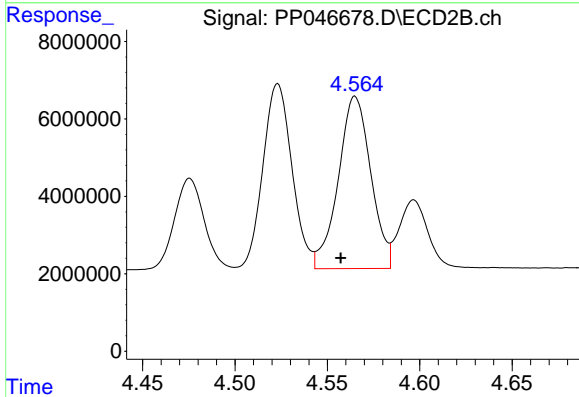


#23 AR-1248-3

R.T.: 5.619 min  
 Delta R.T.: -0.005 min  
 Response: 37027063  
 Conc: 530.08 ng/ml

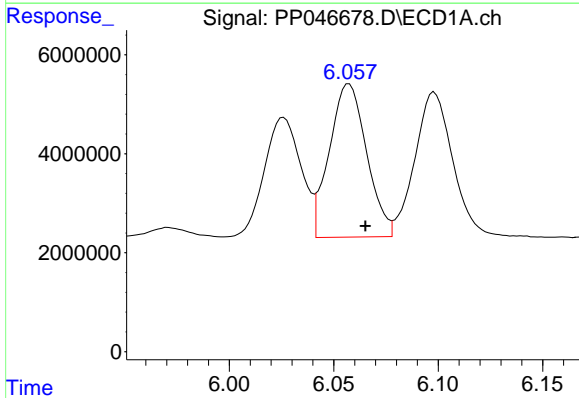
Instrument : ECD\_P  
 Client Sample Id : AR1248CCC500

**Manual Integrations**  
**APPROVED**  
 Reviewed By :Yogesh Patel 04/27/2022  
 Supervised By :mohammad ahmed 04/27/2022



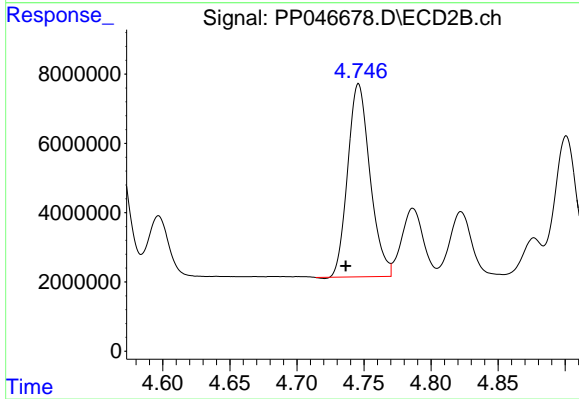
#23 AR-1248-3

R.T.: 4.565 min  
 Delta R.T.: 0.008 min  
 Response: 54568640  
 Conc: 558.98 ng/ml



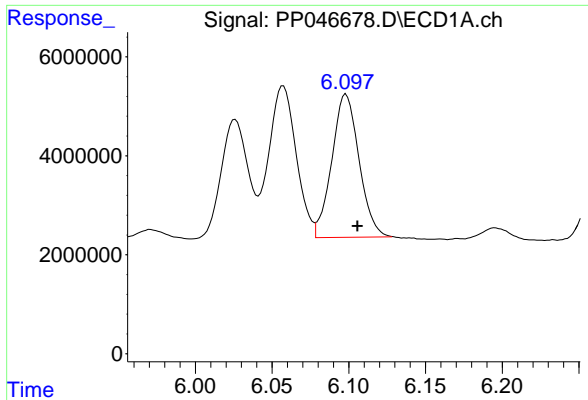
#24 AR-1248-4

R.T.: 6.057 min  
 Delta R.T.: -0.008 min  
 Response: 38383186  
 Conc: 500.55 ng/ml m



#24 AR-1248-4

R.T.: 4.746 min  
 Delta R.T.: 0.010 min  
 Response: 64426556  
 Conc: 547.30 ng/ml



#25 AR-1248-5

R.T.: 6.097 min  
 Delta R.T.: -0.008 min  
 Response: 35687263  
 Conc: 458.83 ng/ml

Instrument :

ECD\_P

ClientSampleId :

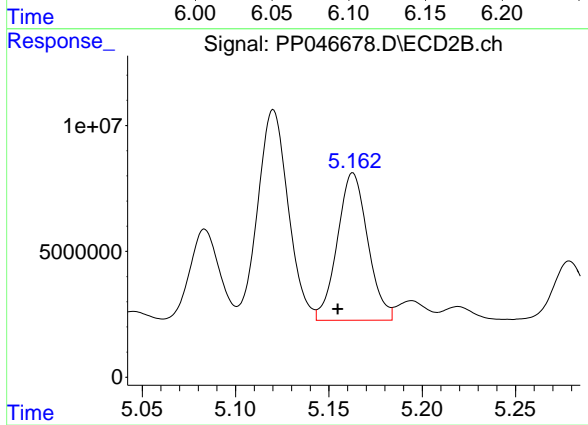
AR1248CCC500

**Manual Integrations**

**APPROVED**

Reviewed By :Yogesh Patel 04/27/2022

Supervised By :mohammad ahmed 04/27/2022



#25 AR-1248-5

R.T.: 5.163 min  
 Delta R.T.: 0.008 min  
 Response: 66482322  
 Conc: 545.56 ng/ml